

Portland Curbsider

Bureau of Planning and Sustainability • Charlie Hales, Mayor • Susan Anderson, Director

Summer 2015

Friends find ways to compost it all

Julia loves to cook for her friends. It's easy for her to fill the kitchen compost pail when preparing for and cleaning up after these large meals.

Recently, Julia's friend Jocelyn stopped by to share a meal mid-week and noticed Julia wasn't using her pail. During the week, Julia didn't compost since there were so few scraps and she wondered if it was worth the effort.

Jocelyn reminded Julia that every little bit counts. She gave Julia the idea of rotating two small compost containers and dumping food scraps in the green roll cart every couple of days.



All across Portland people share the love of composting

Tip #1

Need a bigger or better kitchen compost container for your household? Use any container with a lid or find a style you like at a housewares retailer.

Thanks to Jocelyn, Julia now shares her love of composting with other friends by passing on this great tip.

Housemates tackle the "yuck" factor

When the City of Portland started curbside food scrap collection in 2011, housemates Mia and Maya jumped at the chance to compost — and now they love it.

After testing a variety of tricks to keep their kitchen compost container clean, they found the perfect system for their household. It includes lining the container with a paper bag and emptying it into the green roll cart a couple times a week.

Want to cut down on the "yuck" factor before including food scraps in the green roll cart? Line your container with newspapers, a paper bag or an approved compostable bag.

Tip #2

When their friend John moved in with them last fall, he was a little hesitant to compost at first. Mia and Maya showed him a few easy tricks and now John shares in their love of composting.



Include the food in your green roll cart. It results in nutrient-rich compost and reduces waste headed to the landfill. Visit www.portlandcomposts.com to learn more.



No rate increase for garbage and recycling

For the third year in a row, Portland residents will not see a rate increase on their monthly garbage and recycling bills. Due to declining fuel prices and more efficient collection practices, rates will remain the same for most customers and will decrease for about 20 percent.

Learn more about rates by visiting www.portlandoregon.gov/bps/rates or by calling your garbage and recycling company.

36%

Since Portland began offering weekly curbside food scrap composting and recycling and every-other-week garbage collection, residents have reduced their garbage by 36 percent.

Putting a stop to food waste is a piece of cake!

Here are three easy steps to keep money in your wallet and out of the compost bin:

1. Make a list.

Start by planning your meals for the week. Check what you already have in stock, then make a shopping list (and stick to it). While shopping, choose bulk ingredients and loose fruits and vegetables to get the exact amount you need.

2. Keep fruits and veggies fresh.

Produce often goes bad before we eat it. Freeze fruits you can't eat in time and use them later to make delicious pies and smoothies. And wilting vegetables are great for making soup you can freeze for future meals.

3. First in, First out.

Out of sight, out of mind leads to food waste. Move older ingredients and leftovers to the front of your pantry and refrigerator to use up first. Find new recipes and creative ways to use leftovers and other ingredients to make meals.

PORTLAND CAN!
Climate Action Now

Visit www.portlandcan.org for resources and useful mobile apps

What's even better than composting? Reducing food waste!

The average family throws away 25 percent of the food they buy, wasting about \$1,600 a year. There are lots of ways to reduce your food waste, save money and lower your carbon impact.



HEY PORTLAND! You probably know that you can recycle many plastic containers together with paper and metal in the blue recycling roll cart. But not all plastics can be recycled at the curb. In Portland, plastics accepted are based on **SIZE** and **SHAPE**.



DOES THIS PLASTIC GO IN THE BLUE ROLL CART?

I DON'T KNOW

DOES IT HAVE A NECK OR IS IT A TUB?

NO

YES

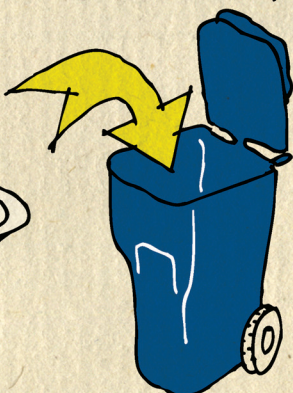
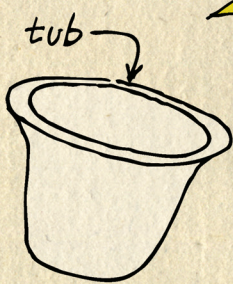
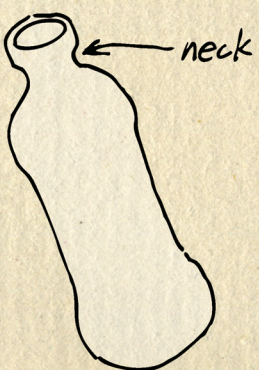
NO

IS IT 6oz. OR LARGER?
In other words, is it large enough to hold a glass of wine or a cup of yogurt?

YES

TOSS IN THE GARBAGE

IT GOES IN!



When in **DOUBT**, throw it **OUT**. Other plastics go in the garbage or they can be recycled at a nearby depot. www.oregonmetro.gov/recycling

How to read your garbage schedule

Garbage in the city of Portland is collected every-other-week for most customers and every-four-weeks for some customers at their request. Recycling and composting are collected every week.

JULY 2015						
Su	M	Tu	W	Th	F	Sa
			1	2	3	4
5	6	7	8	9	10	11
12	13	14	15	16	17	18
19	20	21	22	23	24	25
26	27	28	29	30	31	

Call your garbage and recycling company, look online or sign up for email reminders at www.garbageandrecycling.com to find out which day of the week your carts are collected.

Property owners are responsible for setting up and paying for service for their renters. Talk to the landlord about service changes or if you need to set out bulky items or extra garbage.

Can my cleaners be cleaner?

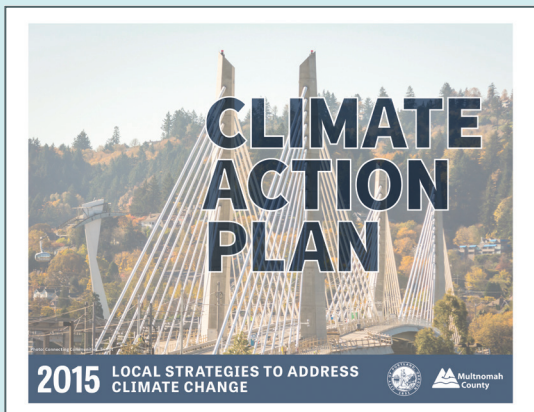


Ask Metro about a safer home.

oregonmetro.gov/cleaners 503-234-3000 | Metro

2015 Climate Action Plan Update

Portland City Council and Multnomah County Commission will consider the 2015 Climate Action Plan.



After receiving over 1,000 comments, elected officials will vote on a revised Climate Action Plan in late June. The goal: Reduce local carbon emissions by 80 percent below 1990 levels by 2050.

The good news is we're on our way — the community has already reduced total emissions by 14 percent below 1990 levels (with 175,000 more people, that's equal to 35 percent per person).

Read the 2015 Climate Action Plan:

www.portlandoregon.gov/bps/climate

Portland business and government leaders speak up about bold climate leadership:

www.portlandoregon.gov/bps/capvideo

Coming soon!
New zoning proposals for mixed use areas, campuses and institutions, employment land and single-family neighborhoods.



The future of your neighborhood is taking shape.

Portland's Comprehensive Plan will establish new rules that affect the size, shape and location of shops, apartments, houses and places of employment.

Your testimony will be welcome at public hearings this summer and fall.

Learn more about how proposed new rules may affect you and your neighborhood.

1. Talk to planners during "office hours" at various locations in your community. Check the website for dates, times and locations near you.
2. Call the Comprehensive Plan Update Helpline at **503-823-0195**.

www.portlandoregon.gov/bps/pdxcompplan

This is your 2015–2016 Garbage Collection Schedule

Collection days are not changing. This schedule replaces your current calendar.

SET YOUR CONTAINERS OUT BY 6 A.M. AND REMOVE WITHIN 24 HOURS OF PICK-UP

Clip and save this calendar or sign up for email reminders at www.garbageadayreminders.com

JULY 2015							AUGUST 2015							SEPTEMBER 2015							OCTOBER 2015						
Su	M	Tu	W	Th	F	Sa	Su	M	Tu	W	Th	F	Sa	Su	M	Tu	W	Th	F	Sa	Su	M	Tu	W	Th	F	Sa
			1	2	3	4						1			1	2	3	4	5				1	2	3		
5	6	7	8	9	10	11	2	3	4	5	6	7	8	6	7	8	9	10	11	12	4	5	6	7	8	9	10
12	13	14	15	16	17	18	9	10	11	12	13	14	15	13	14	15	16	17	18	19	11	12	13	14	15	16	17
19	20	21	22	23	24	25	16	17	18	19	20	21	22	20	21	22	23	24	25	26	18	19	20	21	22	23	24
26	27	28	29	30	31	23	24	25	26	27	28	29	27	28	29	30	25	26	27	28	29	30	31				
							30	31																			

NOVEMBER 2015							DECEMBER 2015							JANUARY 2016							FEBRUARY 2016							
Su	M	Tu	W	Th	F	Sa	Su	M	Tu	W	Th	F	Sa	Su	M	Tu	W	Th	F	Sa	Su	M	Tu	W	Th	F	Sa	
1	2	3	4	5	6	7			1	2	3	4	5						1*	2*			1	2	3	4	5	6
8	9	10	11	12	13	14	6	7	8	9	10	11	12	3	4	5	6	7	8	9	7	8	9	10	11	12	13	
15	16	17	18	19	20	21	13	14	15	16	17	18	19	10	11	12	13	14	15	16	14	15	16	17	18	19	20	
22	23	24	25	26	27	28	20	21	22	23	24	25*	26*	17	18	19	20	21	22	23	21	22	23	24	25	26	27	
29	30	27	28	29	30	31	27	28	29	30	31	24	25	26	27	28	29	30	28	29								
													31															

Holiday Schedule: No collection on December 25, 2015 or January 1, 2016. Your scheduled containers will be collected one day later during these weeks.

MARCH 2016							APRIL 2016							MAY 2016							JUNE 2016						
Su	M	Tu	W	Th	F	Sa	Su	M	Tu	W	Th	F	Sa	Su	M	Tu	W	Th	F	Sa	Su	M	Tu	W	Th	F	Sa
		1	2	3	4	5						1	2	1	2	3	4	5	6	7				1	2	3	4
6	7	8	9	10	11	12	3	4	5	6	7	8	9	8	9	10	11	12	13	14	5	6	7	8	9	10	11
13	14	15	16	17	18	19	10	11	12	13	14	15	16	15	16	17	18	19	20	21	12	13	14	15	16	17	18
20	21	22	23	24	25	26	17	18	19	20	21	22	23	22	23	24	25	26	27	28	19	20	21	22	23	24	25
27	28	29	30	31	24	25	26	27	28	29	30	29	30	31	26	27	28	29	30								

Reminder: Customers must contact their garbage and recycling company within two business days of a missed collection. Additional charges will apply if a return pick-up is needed due to improper preparation or because materials are not curbside by 6 a.m.

Every-other-week garbage

Every-other-week AND every-four-week garbage



Green composting roll cart, blue recycling roll cart and yellow glass bin collected every week



Every-other-week or every-four-week garbage

YES



Paper plates, coffee cups, freezer boxes, wrappers, takeout containers, facial tissue, Styrofoam™, plastic bags, plastic containers labeled “compostable,” rigid clamshells, painted or stained wood, plywood, incandescent light bulbs

Must be bagged Pet waste, cat litter, diapers, feminine hygiene products, ashes, sawdust, packaging peanuts, broken glass

Placed in sealed container Kitchen fats, oil, grease



EVEN IF A PLASTIC PRODUCT SAYS “COMPOSTABLE,” PUT IT IN THE GARBAGE.

Green composting roll cart, blue recycling roll cart and yellow glass bin collected every week

YES



Food scraps Meat, poultry, seafood, bones, eggshells, cheese, bread, pasta, grains, beans, nuts, fruits, vegetables, coffee grounds, spoiled food

Paper napkins, paper towels, coffee filters, tea bags, pizza delivery boxes



Yard debris Weeds, leaves, vines, grass, small branches, flowers, house plants, plant clippings

YES

Paper Catalogs, magazines, newspapers, phone books, cardboard boxes, scrap paper, cartons (milk, juice, soup), shredded paper (must be in paper bag)

Plastic Bottles with a neck (6 oz. or larger), tubs (6 oz. or larger), plant pots (4" or larger), buckets (5 gal. or smaller)

Metal Aluminum, tin and steel food cans, empty dry metal paint cans, empty aerosol cans, aluminum foil, scrap metal (smaller than 30" and less than 30 lbs.)

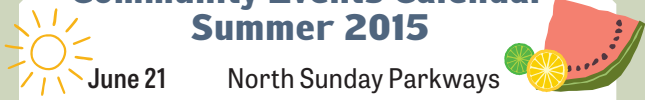
Glass bottles and jars only Mix all colors together, (labels are OK) in yellow glass bin or other rigid plastic container with “glass only” sticker

Motor oil In a jug next to roll cart or bin. Use a leak-proof, see-through plastic container with a screw-on lid (1 gal. or smaller). Don't mix with other liquids



- NO** Computers, monitors and TVs, hazardous waste, chemicals, compact fluorescent light bulbs (CFLs). Contact Metro Recycling Information (503-234-3000) to learn how to dispose of these items and more.
- NO** Plastic bags, pet waste, cat litter, diapers, paper plates, “compostable” containers, large amounts of liquids, grease or oil, lumber, rocks, dirt, ashes, large branches (more than 4" thick and 36" long), household garbage.
- NO** Plastic bags, plastic lids, diapers, freezer boxes, coffee cups, pesticide or herbicide bottles, propane cylinders, household garbage. Light bulbs, drinking glasses, flower vases, ceramics, broken glass, lids.

Community Events Calendar Summer 2015



June 21	North Sunday Parkways
June 27	Good in the Hood
July 26	Northeast Sunday Parkways
August 14	Southeast Portland Tool Library Repair Café
August 15	Multnomah Days
August 23	Southeast Sunday Parkways
September 27	Southwest Sunday Parkways

Smart homeowners realize the value of a home that saves energy. EPS™ brought to you by Energy Trust of Oregon, is an energy performance scoring tool that rates a home's estimated energy costs and carbon footprint. The lower the score, the more efficient the home.

Efficient homes are more attractive to prospective buyers and may earn you more money when you're ready to sell.



www.energytrust.org/eps

PORTLAND LEADS THE WAY

A recent study conducted by Metro shows that residents are making a positive impact with their recycling efforts. The study showed that we have the lowest recycling contamination levels in the region, with fewer recyclable items in the garbage and fewer plastic bags in recycling.

Keep up the good work!

Use the curbside guide on page 3 as a helpful reminder of what goes where.

Become a Master Recycler

Have fun while making a difference in the community.

Learn from the experts and share with your neighbors. Trainings offered three times a year in the Portland region.

www.masterrecycler.org



EACH CART PLAYS A PART



Collection Day Reminders

- Place containers within 3 feet of the curb by 6 a.m.
- If possible, leave space between the carts and other objects (cars, mailboxes, trees, etc.).
- Please remove empty containers from the curb within 24 hours.

Curbside Hotline: 503-823-7202

www.garbagecollectionreminders.com



Bureau of Planning and Sustainability
Innovation. Collaboration. Practical Solutions.

City of Portland, Oregon
Charlie Hales, Mayor • Susan Anderson, Director

1900 SW 4th Ave, Suite 7100 | Portland, OR 97201
www.portlandoregon.gov/bps
503-823-7202

FACEBOOK.COM/PORTLANDBPS TWITTER.COM/PORTLANDBPS



PRSR STD
US POSTAGE
PAID
PORTLAND OR
PERMIT NO 653

2015-2016 Garbage Collection Schedule Inside

Rates and recycling information
Sharing the love of compost

Portland Curbsider



Who picks up my garbage and recycling?

While the City of Portland sets the rates, your bill comes directly from the garbage and recycling company that provides service to your area.

Miss a pickup, have questions about a bill?

Call your company to help quickly resolve issues. The name and phone number of your company is on your bill and on the side of the green composting and blue recycling roll carts.

Are you a renter? Landlords are required to provide and pay for curbside collection service including weekly recycling and composting. Talk to the landlord before setting out extra garbage or large/bulky items for collection (there is a fee for this service).

www.portlandoregon.gov/bps/rentals

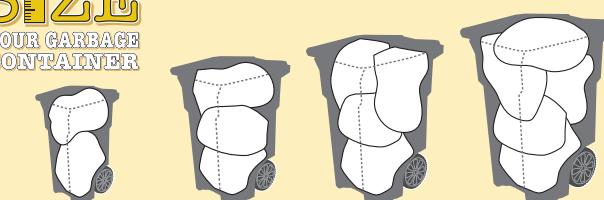
New to Portland? In a new home?

In Portland, we do things a little differently — including garbage, recycling and composting. Portlanders recycle and compost 70 percent of what we discard. To reach our goal of 90 percent by 2030, we all have to do our part.

Choosing the right containers helps make the most of what you're tossing and keeps the system running smoothly. It may help you downsize your garbage container, and also save you money.



Choose the garbage container that fits your household's needs



20* GALLON Roll Cart	35 GALLON Roll Cart	60 GALLON Roll Cart	90 GALLON Roll Cart
60 POUND Weight Limit	85 POUND Weight Limit	135 POUND Weight Limit	175 POUND Weight Limit
APPROXIMATELY 2 TALL Kitchen Bags	APPROXIMATELY 3 TALL Kitchen Bags	APPROXIMATELY 4 TALL Kitchen Bags	APPROXIMATELY 5 TALL Kitchen Bags

* 20-gallon roll carts are not available to every-four-week customers. Some 20-gallon service customers will receive a modified 35-gallon roll cart.

Don't forget: You can set out an extra can or bag of garbage on your collection day for a one-time \$5 fee. Or increase to a larger garbage container for an additional \$5-7 per month.

Garbage rates and recycling information available

تايا افن لاقن راعسأ ن ع تامول عم
ةرفوتم ريودتل او

ゴミ料金およびリサイクル情報提供可能

Informații disponibile referitoare la tarifele pentru colectarea gunoiului și reciclare

Доступны расценки на вывоз мусора и сведения о переработке

可获取垃圾等级和回收信息

Masmuulaadka qiimaha qashinka iyo dib u warshadeyntiisa waa la helayaa

Tarifas de recolección de basura e información de reciclaje disponibles

Тарифи на вивезення сміття і інформацію з питань утилізації можна отримати

Thông tin về tỷ lệ rác thải và tái chế đang sẵn có

www.portlandoregon.gov/bps/garbagerates