

Portland Curbsider

Bureau of Planning and Sustainability • Charlie Hales, Mayor • Susan Anderson, Director

Winter 2014

THINKING OUTSIDE THE HOLIDAY GIFT BOX

Show your creative spirit this holiday season. Reduce excess waste and packaging, and eliminate stressful decisions and money spent on unnecessary items. These Portlanders are sharing differently to save time, money and have more fun!

FOR FAMILY AND FRIENDS WHO HAVE IT ALL

Yvonne and Josh are a creative duo who love to make things inspired by the Northwest seasonal harvests. Instead of purchasing items for friends and family, Yvonne and Josh give batches of homemade beer and baked goods, like marionberry jam and hazelnut toffee.



FOR THE SPORTS FAN

Matthew and his two brothers Nathan and Stephen share an abiding love for the University of Florida Gators football team. Instead of sending his brothers, who still live in Florida, more Gators gear for their packed closets, Matthew gets them tickets to a game.

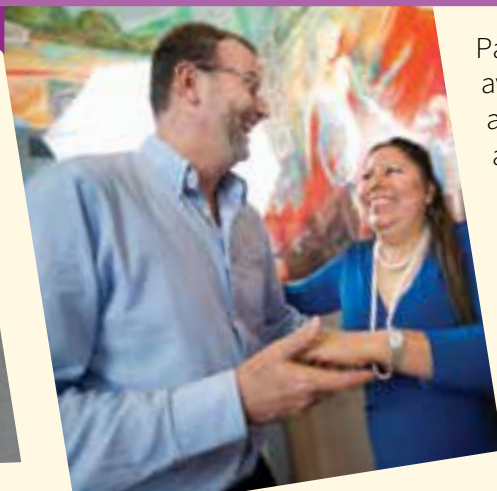


FOR KIDS WHO LIKE TO UNWRAP PRESENTS



Peggy and Rick's sons enjoy the surprise of unwrapping holiday gifts so they get creative selecting new and reused purchases. They buy something the kids need, like a new baseball mitt, and something else fun, like a used Lego set. Peggy reuses last year's gift bags and ribbons and wraps presents with paper bags decorated with paint or ink stamps.

FOR THE HOBBYIST WITH A GARAGE FULL OF GEAR



Paul is a renaissance man: an avid photographer, fisherman and salsa dancer. Instead of adding to his collection of gear, Aurelia arranged for them to take weekly salsa dancing classes. They're sharing the experience together and learning new moves, while getting fit at the same time.

FOR A BIG FAMILY WHO GIVES WITHOUT BREAKING THE BANK

Pam started a gift exchange to ease the stress of shopping for a large extended family. Now each family member gives and receives just one extra-special gift. Homemade creations or gifts of service like house cleaning are encouraged! Holidays are now less expensive and a lot more fun.



FOR THE BUSY, EXHAUSTED COUPLE

Mandy and Tony benefit from his mother Annette's choice to start new traditions for her family. As her kids started families of their own, free time became even more precious. To provide them with a break, Annette gives gift certificates to local hotels. To top off the special evening out, she babysits the little ones, allowing quality time with her grandkids.



NEED MORE INSPIRATION?

Resourceful PDX

→ www.resourcefulpdx.com

Simplify the Holidays

→ www.simplifyholidays.org

2014-15 FIX-IT FAIRS



Bringing money-saving, health-promoting, resource-conserving tips and tools to Portland residents

Fix-It Fairs are free community events that feature more than 50 exhibitors, workshops, lunch and childcare. The events include resources for weatherization and energy conservation, garden and habitat maintenance, healthy eating, sound finances, and more.

**January 24, 2015 Rosa Parks Elementary School
8960 N Woolsey Ave**

**February 21, 2015 David Douglas High School
Clases en español! 1001 SE 135th Ave**

Saturdays 9:30 A.M. - 3 P.M.



REPAIR PDX

Come to the repair café at all Fix-It Fairs this season! Repair cafés bring together volunteers who like to fix things with people who have items that need repair.

These events will focus on small appliances and clothing. Volunteers will do their best to repair items, but do not guarantee a complete repair.

Portlanders show their food scraps are too good to waste

Almost 80 percent of Portland households are creating rich compost for healthier farms and gardens by adding food scraps to their green composting roll carts. Portlanders have also reduced garbage going to landfill by 36 percent since the food scrap collection program started three years ago.

INCLUDE THE FOOD



Compost works. And we like it!

A recent citywide survey showed Portlanders love their curbside compost, recycling and garbage service and rate it more highly than almost any other city service. Nearly three-quarters of residents feel "very good" or "good" about their curbside collection.

Looking for ways to make food scrap collection work even better for you? Get information and tips at www.portlandcomposts.com.

PORTLAND'S CURBSIDE HOTLINE ANSWERS RESIDENTS' CALLS AND EMAILS ABOUT A RANGE OF GARBAGE, RECYCLING AND COMPOSTING QUESTIONS



QUESTIONS (AND ANSWERS) FROM THE HOTLINE

Q: Can I recycle coffee cups, soda fountain cups and paper takeout containers?

A: No, these items should go in your garbage container. They are coated in plastic that makes them hard to recycle.

Q: What do I do with packaging that is labeled "compostable" or "biodegradable?"

A: These items should go in your garbage container. Please do not put them in your recycling or composting roll carts. These products contaminate the recycling and composting processes.

Q: What can I do with Styrofoam™ blocks?

A: Styrofoam™ blocks go in the garbage container. You can also take Styrofoam™ to a local recycling depot. Find locations at www.oregonmetro.gov/findarecycler.

Q: What do the numbers on the bottom of some plastics have to do with what's accepted?

A: Portland does not use symbols or numbers to determine which plastics are accepted at the curb. Numbers are useful to manufacturers, but when it comes to recycling, they don't tell the whole story. Follow your Be Cart Smart guide to know which plastics are accepted in the blue recycling roll cart. Recycling depots accept many non-curbside plastics, including three Far West Recycling locations in Portland. www.farwestrecycling.com

Q: My yellow glass recycling bin went missing. Can I get another one?

A: Yes, call your garbage and recycling company to request one. Or use another rigid, reusable container labeled with a Glass Only sticker.

Q: I rent a home in Portland. Who is responsible for the garbage service — me or the landlord?

A: The landlord is required to establish and pay for garbage, recycling and composting service to tenants. Rental houses and smallplexes (2 to 4 units) must be provided at least 20 gallons of garbage capacity per unit. Bills for service must be in the property owner's name and sent to the property owner or property management company for payment. Get more information at www.portlandoregon.gov/bps/rentals.

Q: Who do I call to report illegal dumping in my neighborhood?

A: Contact the Regional Illegal Dumping (RID) Patrol at 503-234-3000. RID investigates and cleans up illegal dumps on public property, issues citations, and offers tips and assistance.

DID YOU KNOW?

In case of inclement weather this winter, contact your garbage and recycling company with questions about your curbside collection. You can find their name and phone number on your bill, the side of the green composting and blue recycling roll carts, or online at www.garbageadayreminders.com.

HAVE A QUESTION?

Submit a question online at www.portlandoregon.gov/bps/curbsidequestions, by email at wasteinfo@portlandoregon.gov or call the Curbside Hotline at 503-823-7202

Trees help make Portland, well, Portland

Thinking about removing a tree on your property? Removing or pruning a street tree?

Call before you cut!

Updated tree regulations* to enhance Portland's urban forest go into effect on January 2, 2015.

Visit www.portlandoregon.gov/trees for information on the new program, questions about tree regulations or how they apply to your situation and opportunities to learn more.

Call the Tree Hotline at 503-823-TREE (8733). Knowledgeable tree experts will answer your questions.

* Tree regulations and permitting requirements apply to construction and non-construction situations.

DID YOU KNOW? To provide safe clearance for vehicles, trees are required to be trimmed 11 feet above residential streets and 14 feet over arterial streets.

Trees also help make our neighborhoods green and livable. Clean and cool the air and water, and trap carbon. Provide food for people and habitat for birds. Reduce stormwater runoff, erosion and landslides. Are fun to sit under and climb!

Become a Master Recycler

Learn from the experts. Share with your neighbors.



www.masterrecycler.org

Participate in an 8-week course to learn the latest information on waste prevention and recycling.

Then commit to volunteer 30 hours to share what you learned with neighbors, coworkers and community.

Applications for the January/February 2015 course accepted through December 31, 2014

PARTNERS
METRO CITY OF PORTLAND CLACKAMAS COUNTY WASHINGTON COUNTY RECYCLING ADVOCATES OREGON DEPARTMENT OF ENVIRONMENTAL QUALITY

Tips for staying cozy this winter

Temperatures are dropping and winter is right around the corner. Grab a coffee or hot cider, put on your favorite flannel and cuddle up to these tips for keeping comfortable and healthy indoors.

- **Cover drafty windows.** Install window treatments such as blinds, drapes or shades to help reduce heat loss.
- **Adjust the temperature.** Set the thermostat 10 to 15 degrees cooler when you're not home to use less energy and lower utility bills.
- **Give your home a free check-up from Clean Energy Works (CEW).** Nonprofit home performance provider CEW offers many ways to become more efficient, comfortable, home-healthy and even safer during an earthquake.

Interested in CEW upgrades but not sure where to begin? Visit www.cewo.org/get-started to learn about the benefits like more usable space, better indoor air quality, less street noise and of course, energy cost savings.



CAN I RECYCLE A PLASTIC SNOWMAN?

Ask Metro how to clear stuff out.

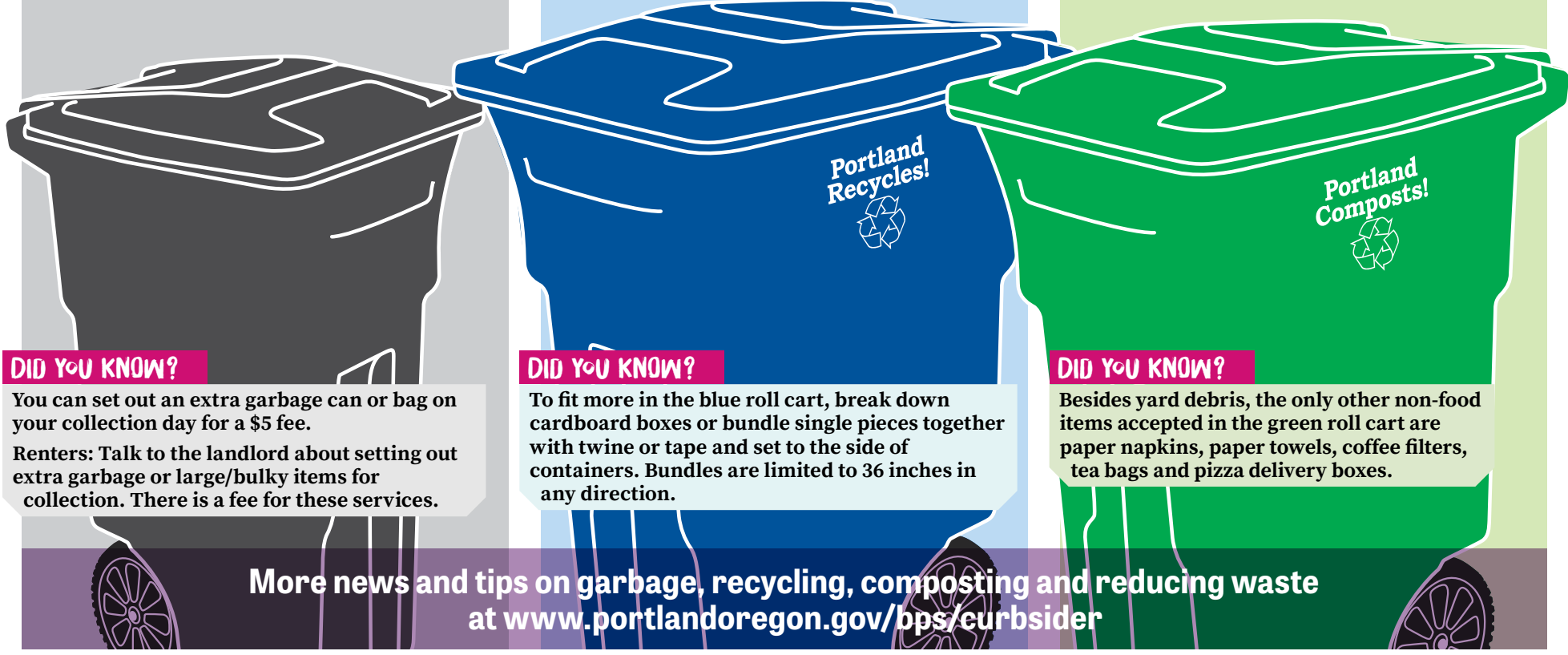
503-234-3000 oregonmetro.gov

Sorting through the holidays

It's the time of year when you may find yourself dealing with more packaging and seasonal waste than normal. You know what to do with the turkey carcass and stale fruitcake (green composting roll cart), but what about some of the other "stuff" generated by the holidays?

Many items can be reused (bows, ribbon, padded envelopes and gift boxes) or recycled beyond the curb at a local recycling depot (spent batteries, broken strings of lights, Styrofoam™, packing peanuts and non-curb-side plastics).

Here's a refresher on what goes where when you're finished with it.



DID YOU KNOW?
 You can set out an extra garbage can or bag on your collection day for a \$5 fee.
Renters: Talk to the landlord about setting out extra garbage or large/bulky items for collection. There is a fee for these services.

DID YOU KNOW?
 To fit more in the blue roll cart, break down cardboard boxes or bundle single pieces together with twine or tape and set to the side of containers. Bundles are limited to 36 inches in any direction.

DID YOU KNOW?
 Besides yard debris, the only other non-food items accepted in the green roll cart are paper napkins, paper towels, coffee filters, tea bags and pizza delivery boxes.

More news and tips on garbage, recycling, composting and reducing waste at www.portlandoregon.gov/bps/curbsider

Giving someone a new gadget this holiday?

Oregon E-Cycles offers options to recycle old electronics

Does your wish list include a new laptop or computer? Or have you purchased a new television or other electronic device? Oregon E-Cycles is a free electronics recycling program for old computers, monitors and TVs you no longer need or want. You can recycle a maximum of seven items at a time. There are several locations in the Portland-metro area.

Starting January 1, 2015, printers, keyboards and mice (peripherals) will also be accepted.



DID YOU KNOW?
 Computers, monitors and TVs are not allowed in curbside garbage and cannot be disposed of at landfills or incinerators.



Holiday trees

CURBSIDE COLLECTION: TREE PIECES

- Cut the trunk and branches into pieces less than 36 inches long and 4 inches in diameter. Bundles must be securely tied with string or twine; weight limit is 45 lbs.
- Please ensure that any tree pieces in your green composting roll cart do not poke above the lip of the cart; weight limit is 135 lbs.
- Put extra bundles or cans at the curb on your collection day for \$3.75 each.

CURBSIDE COLLECTION: WHOLE TREE

- Trees that are 6 feet and under can be put out at the curb on collection day for \$4.50.
- Please cut larger trees down to 6 feet to ensure driver safety.

You can also arrange with a nonprofit organization to collect your tree for a fee.

Call Metro's recycling hotline at 503-234-3000 for drop-off or pick-up information.

Holiday schedule on page 4

Portland participates! Community members weigh in on how to create a more prosperous, healthy, resilient and equitable city.

Happening now: 2035 Comprehensive Plan

Help the City create a new land use plan that focuses on livable neighborhoods and bustling main streets, with connections to jobs, nature and transit.

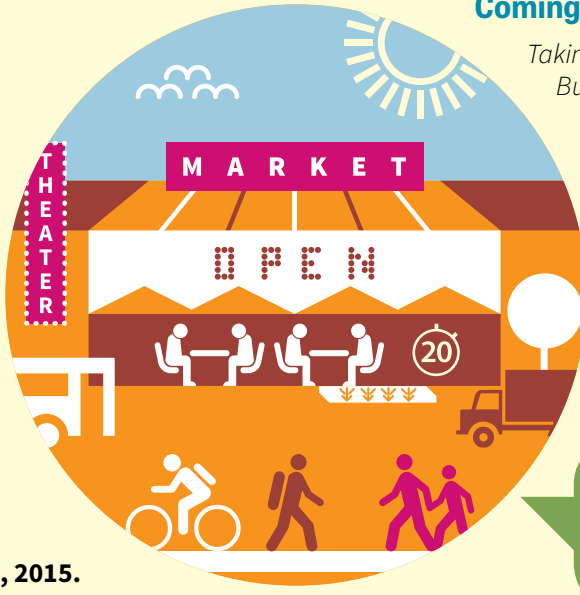
Nearly 2,000 people have commented on the draft 2035 Comprehensive Plan.

Last summer, the City of Portland released the Comprehensive Plan Proposed Draft, a land use and transportation plan to guide growth and development for the next 20 years.

Since then, almost 30,000 people have visited the online Map App to view proposed land use changes in their neighborhoods and comment online. Others have given their feedback to Portland's Planning and Sustainability Commission by letter, email and in person.

Check out the plan and make your voice heard.

Written comments will be accepted until March 13, 2015.



Coming soon: 2015 Climate Action Plan

Taking action on climate change can seem overwhelming. But Portland is headed in the right direction.

Whether you ride transit or bike to work, weatherize your home, compost food scraps or choose renewable power — you are part of the solution.

City and county government are updating our local Climate Action Plan. The plan will build on the forward-thinking initiatives that have made Portland a leader in climate action while advancing a more equitable community. **The goal: Reduce local carbon emissions by 80 percent by 2050.**

Total U.S. carbon emissions are up 6 percent, while Portlanders have reduced emissions by 11 percent since 1990.

Interested in plans for Portland's future? You can learn more and provide feedback.

2035 Comprehensive Plan —> www.portlandoregon.gov/bps/pdxcomplan

Climate Action Plan —> www.portlandoregon.gov/bps/climate for updates and to learn how small changes in daily activities can make a difference.



Bureau of Planning and Sustainability
Innovation. Collaboration. Practical Solutions.

City of Portland, Oregon
Charlie Hales, Mayor • Susan Anderson, Director

1900 SW 4th Ave, Suite 7100 | Portland, OR 97201
www.portlandoregon.gov/bps
503-823-7202

FACEBOOK.COM/PORTLANDBPS TWITTER.COM/PORTLANDBPS



PRSR STD
US POSTAGE
PAID
PORTLAND OR
PERMIT NO 653

IN THIS ISSUE



Holiday schedule changes

Sorting through the holidays

2014-2015 Fix-It Fairs

The Bureau of Planning and Sustainability is committed to providing equal access. If you need special accommodation, interpretation or translation, please call 503-823-4309, the TTY at 503-823-6868 or the Oregon Relay Service at 1-800-735-2900.

Portland Curbsider



Holiday schedule changes for garbage, recycling and composting collection

No collections on Thursday, December 25, 2014 or Thursday, January 1, 2015. All other holidays are regular pick-up days.

If your regular pick-up day is

From December 25 to January 3, your pick-up day will be

Monday	Monday	No change
Tuesday	Tuesday	No change
Wednesday	Wednesday	No change
Thursday	Friday	
Friday	Saturday	

Holiday schedule change information online at www.portlandoregon.gov/bps/holiday

Сведения об изменениях расписания по праздникам см. на сайте www.portlandoregon.gov/bps/holiday.

Tin tức về thay đổi lịch trình trong dịp nghỉ lễ trên trực tuyến tại www.portlandoregon.gov/bps/holiday.

Información sobre cambios de horario por días festivos en Internet en www.portlandoregon.gov/bps/holiday.

Macluumaadka jadwalka maalmaha fasaxa ah ee laga heli karo internet-ka www.portlandoregon.gov/bps/holiday.

节假日时间变更信息请参照：www.portlandoregon.gov/bps/holiday

www.garbage reminders.com

Is this my week?

We go out every week.

SIGN UP FOR EASY REMINDERS THAT TAKE THE GUESSWORK OUT OF GARBAGE DAY!