



The Southwest Corridor Light Rail Project

Teresa Boyle
PBOT

Chris Ford
Metro

Dave Unsworth
TriMet

Andrea Blaser
AINW



Southwest Corridor and PHLC

June 2018	Briefing on Draft Environmental Impact Statement (DEIS)
May 2020	Briefing on Conceptual Design Report and Marquam Hill connector
June 2020	Briefing/Advice on Section 106 and Memorandum of Agreement
2021-2022	Approval Process for Land Use Actions

Previous PHLC Feedback

DEIS Letter – July 30, 2018

- Preference for Barbur alignment - fewest historic impacts
- Concern for Jewish Shelter Home
- Interest in providing input on Section 106 mitigations

May 2020

- Interest in protecting views and character of Terwilliger Parkway
- Interest in using project's historic survey work in City's Inventory of Historic Resources

Historic Resource Impacts Comparison

	DEIS June 2018	June 2020
Inner Portland	10 – 19 adverse impacts	Up to 7 adverse impacts
Outer Portland	3 – 6 adverse impacts	4 adverse impacts

Overview

- **Section 106** – Historic and cultural resources
- **Section 4(f)** – Park and recreation lands, wildlife and waterfowl refuges and historic sites



Section 106 Review Process

36 CFR § 800.3-7

C
O
N
S
U
L
T
A
T
I
O
N



INITIATE the process

- Determine undertaking
- Coordinate with other reviews
- Identify SHPO/THPO, Indian tribes/NHOs, and other parties
- Plan to involve the public

No undertaking with potential to affect historic properties?

NO



IDENTIFY historic properties

- Determine APE and scope of effort
- Make reasonable and good faith effort to identify
- Determine National Register eligibility
- Consult SHPO/THPO, Indian tribes/NHOs, and other parties
- Involve the public

No historic properties present or affected?

NO



ASSESS adverse effects

- Apply Criteria of Adverse Effects
- Consult SHPO/THPO, Indian tribes/NHOs, and other parties
- Involve the public

No historic properties adversely affected?

NO



RESOLVE adverse effects

- Develop and consider alternatives or modifications to avoid, minimize, or mitigate adverse effects
- Notify the ACHP
- Consult SHPO/THPO, Indian tribes/NHOs, and other parties
- Involve the public

AGREEMENT or Council Comment

PROCEED



Property Types

Buildings • Structures • Objects • Sites • Districts

Eligibility = Significance + Integrity

36 CFR § 60.4

**Criteria for Evaluation
(Significance)**

A. Event

Associated with events that have made a significant contribution to the broad patterns of our history.

B. Person

Associated with the lives of significant persons in our past.

C. Design/Construction

Embody the distinctive characteristics of a type, period, or method of construction, or that represent the work of a master, or that possess high artistic values, or that represent a significant and distinguishable entity whose components may lack individual distinction.

D. Information Potential

Has yielded or may be likely to yield information important in history or prehistory.

Aspects of Integrity

setting **MATERIALS**
LOCATION
Workmanship **design**
feeling **Association**

**Measure Change from
Present Condition**

36 CFR § 800.5(a)(1)

Criteria of Adverse Effect

An ADVERSE EFFECT is found when an undertaking may alter, directly or indirectly, any of the characteristics of a historic property that qualify the property for inclusion in the National Register in a manner that would diminish the property's integrity.

ADVERSE EFFECTS may include reasonably foreseeable effects caused by the undertaking that may occur later in time, be farther removed in distance, or be cumulative.

36 CFR § 800.5(a)(2)

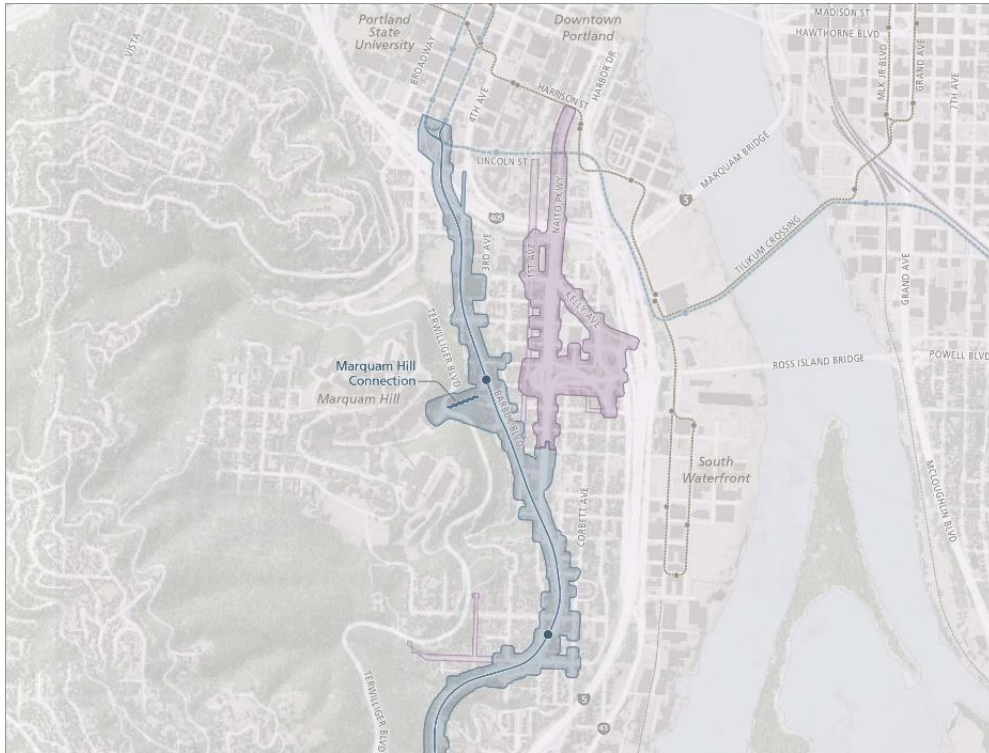
Examples of Adverse Effects

- Destruction or Damage of all or part of historic property
- Alteration not consistent with SOI Standards
 - Removal from its Location
 - Change in Use or Setting
- Addition of Visual, Audible, or Atmospheric Elements out of Character
- Neglect (when not an expected characteristic)
- Transfer, Sale, or Lease out of Federal Control

Section 4(f)

- Separate federal regulation applying to impacted parks and historic resources in this corridor
- Core findings follow the Section 106/historic property findings and mitigation

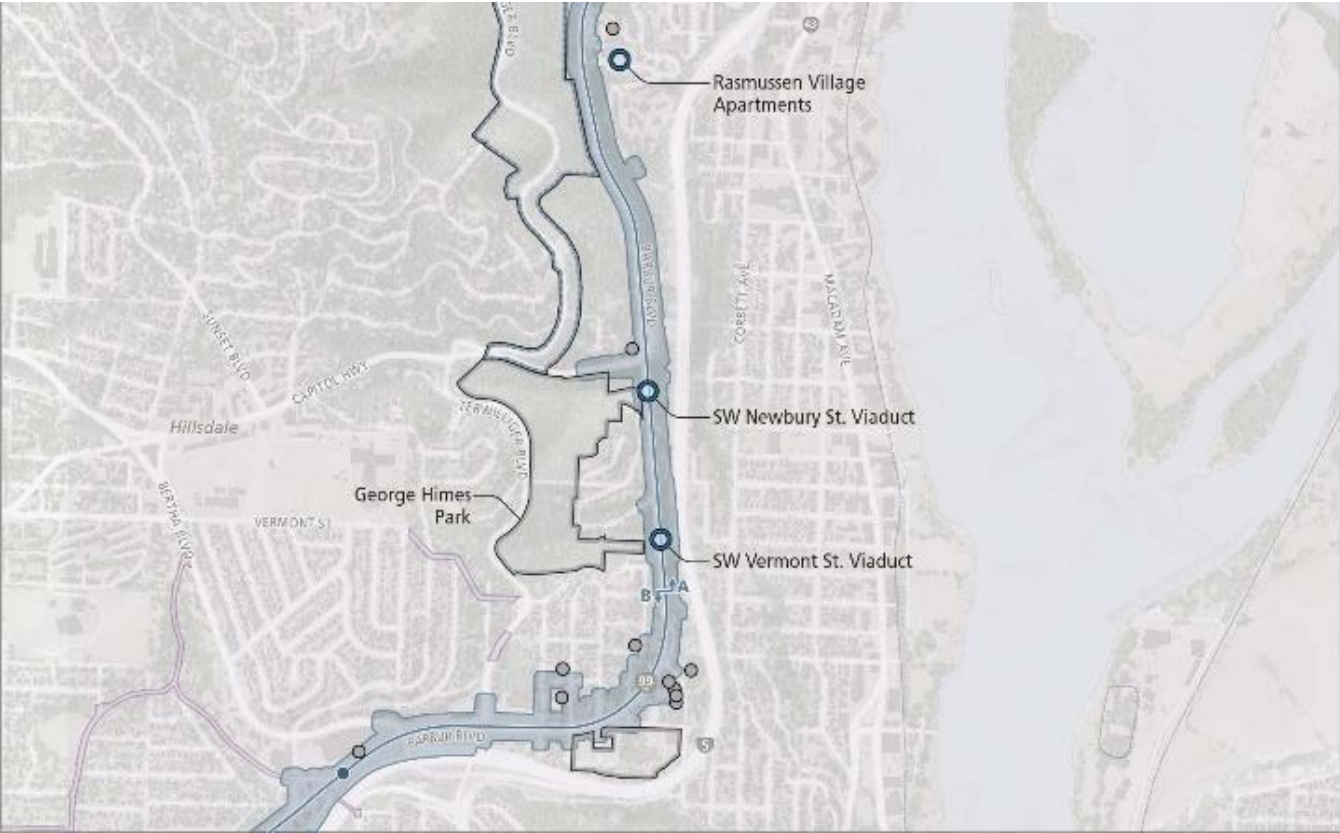
Section 106 Context Area of Potential Effect (APE)



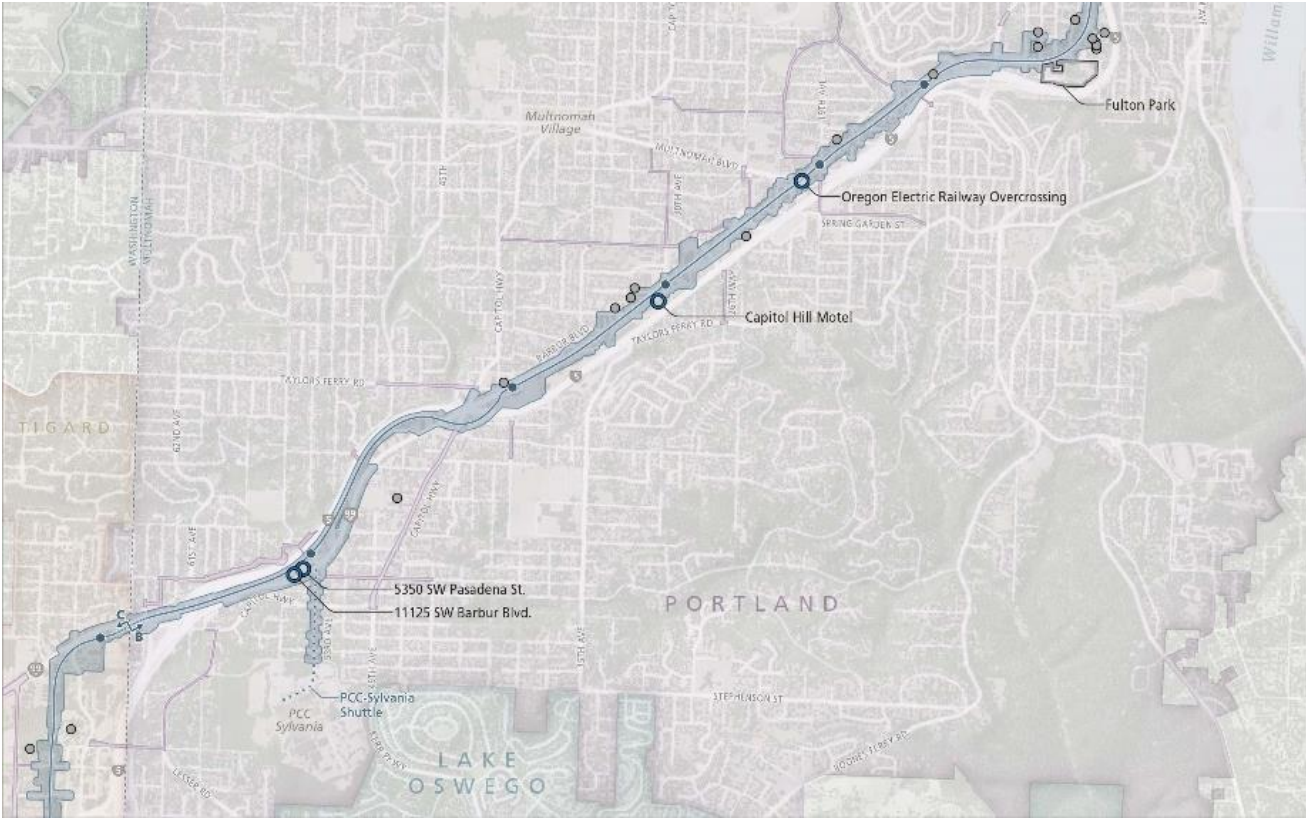
Determination of Eligibility and Draft Findings of Effect

- Draft until SHPO confirms
- 77 properties had determination of eligibility and finding of effect analyzed
 - 67 for light rail (62 in Portland)
 - 10 for Ross Island Bridgehead Reconfiguration
- Up to 11 properties adversely affected

Inner Portland Resource Map



Outer Portland Resource Map

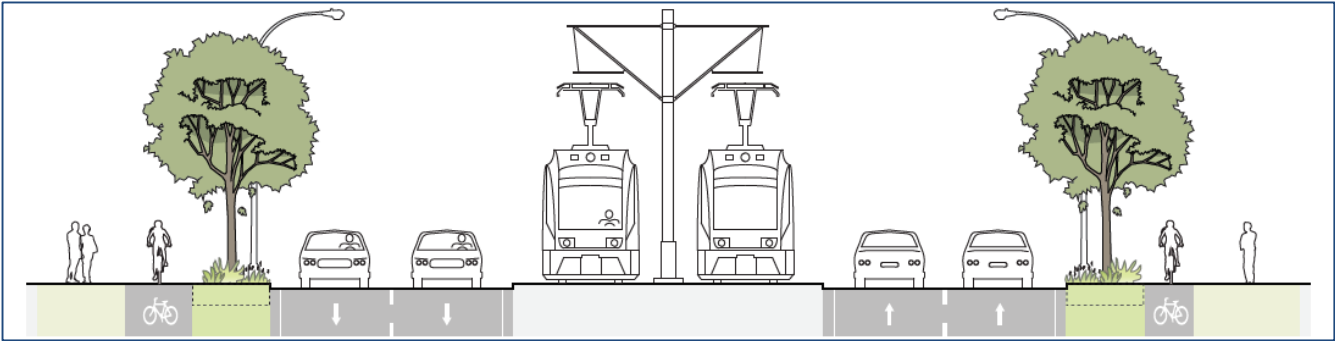


Existing Conditions



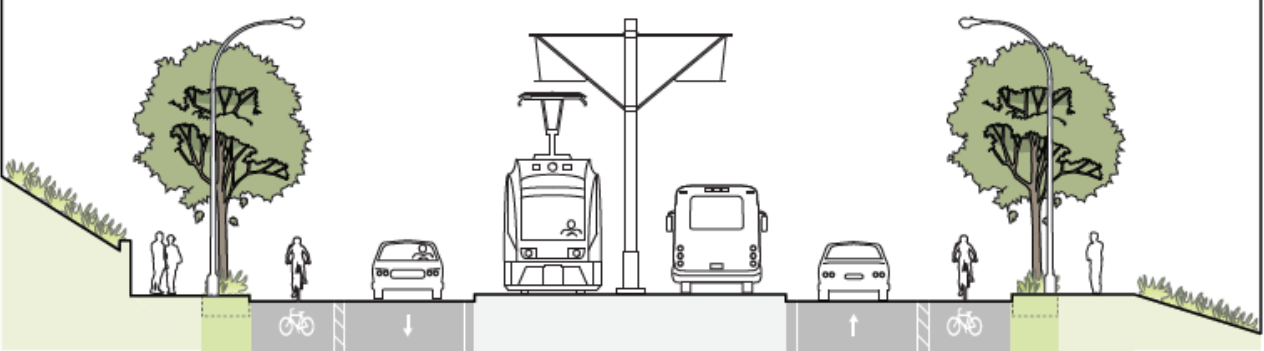
Streetscape Improvements

SW Barbur Blvd – Naito to Barbur Transit Center



Streetscape Improvements

SW Barbur Blvd – North of Naito



Barbur Boulevard Resources - Buildings



Rasmussen Village
(driveway and signage impacts)



Capitol Hill Motel
(building impact)



11125 SW Barbur Boulevard
(removal)



5350 Pasadena Street
(removal)

Barbur Boulevard Resources - Buildings

Potential Mitigation Strategies

- Oregon State Level documentation for each resource with:
 - Digital photos of structures and sites
 - Descriptions and history
 - Relevant archival materials
- A written history of Barbur Boulevard construction and heyday as main highway, and relationship to buildings along it

Barbur Boulevard Resources - Bridges



Newbury Viaduct
(replaced)



Vermont Viaduct
(replaced)



Oregon Electric Railway Overcrossing
(replaced)

Barbur Boulevard Resources - Bridges

Potential Mitigation Strategies

- Historic American Engineering Record (HAER) documentation
- Develop and install interpretive sign for the viaducts
- Historical markers commemorating the historic structures on the new structures

Congregation Ahavath Achim Synagogue

Removal due to:

- Key station area location
- Shared bus and light rail station and connection to Marquam Hill
- Right of way constraints
- Maintaining safe pedestrian movement



Congregation Ahavath Achim Synagogue

Potential Mitigation Strategies

- Historic American Buildings Survey (HABS) documentation
- Interpretive display at the lower terminal of the Marquam Hill Connection in collaboration with Oregon Jewish Museum and Center for Holocaust Education

Jewish Shelter Home

Historic Landmark and Listed on National Register



Main building from Corbett Ave



Isolation Hospital (attached to main building). Possible removal due to road widening

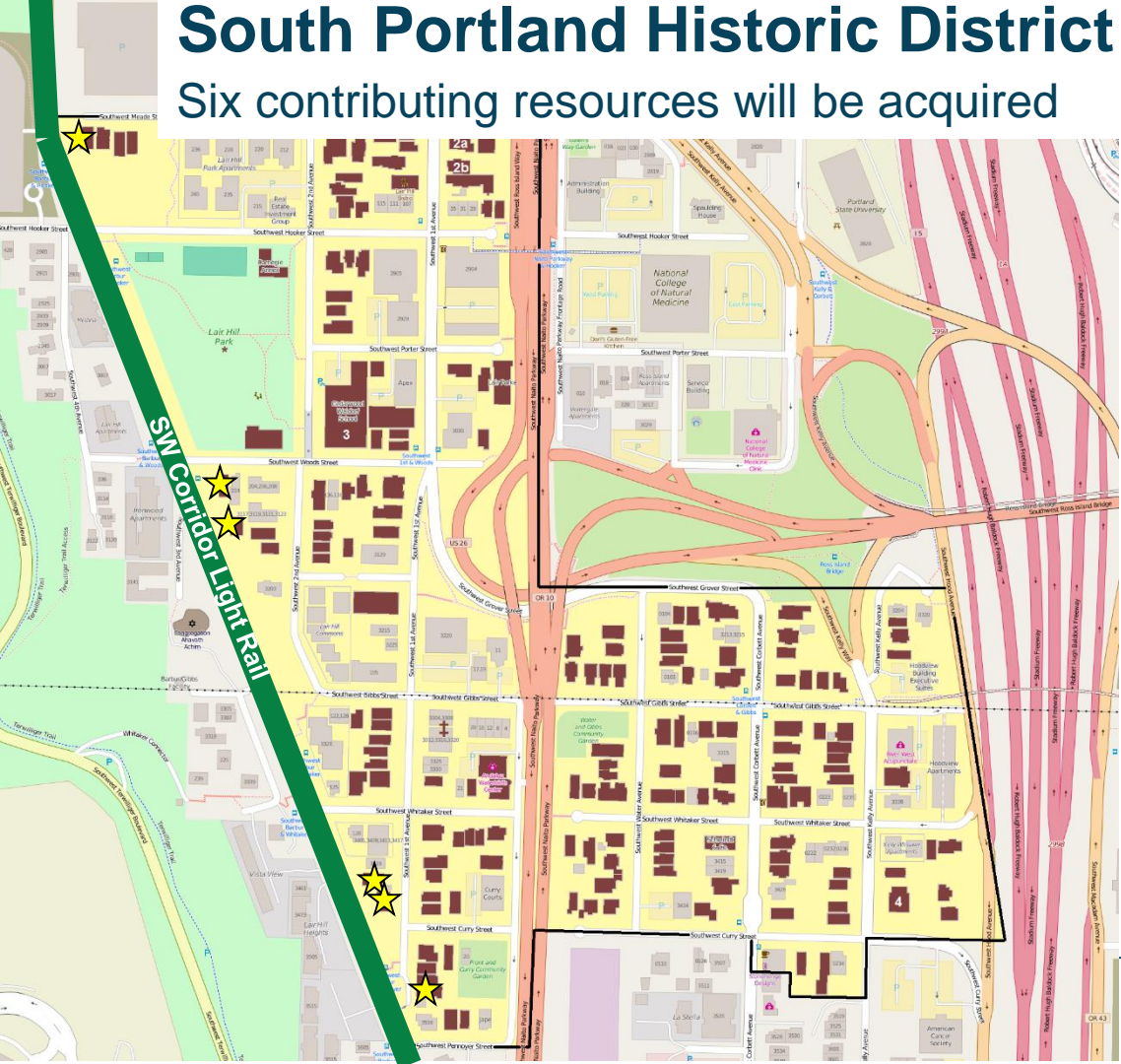
Jewish Shelter Home

Potential Mitigation Strategies

- Seek deviation from street design requirements to avoid removal of isolation hospital
- If removal required – restore backside of main building along Corbett

South Portland Historic District

Six contributing resources will be acquired



South Portland Historic District

Primary Contributing Resources



3425 SW 1st Ave



3524 SW 1st Ave

South Portland Historic District

Secondary Contributing Resources



338 SW Meade



3124 SW Barbur



105 SW Curry



230 SW Woods

South Portland Historic District

Potential Mitigation Strategies

- Offer each building at no cost for relocation to avoid demolition
- If relocation not feasible, salvage reusable materials
- Survey entire district and amend 1998 NRHP nomination form

Terwilliger Parkway – Marquam Hill Connector



View from Barbur



View from Terwilliger

Terwilliger Parkway

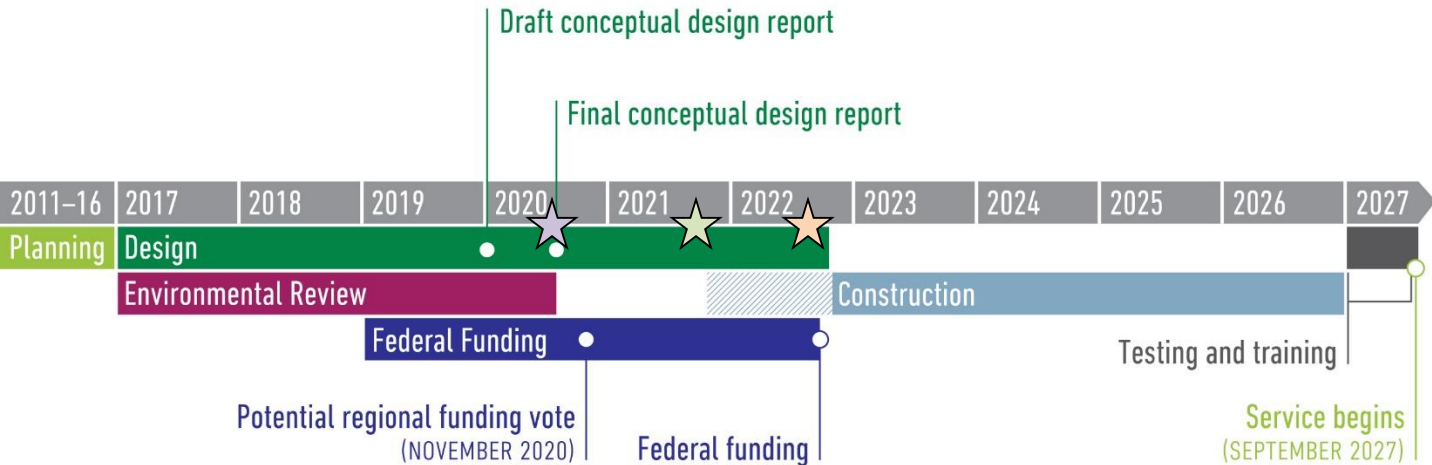
Potential Mitigation Strategies

- Interpretive display at upper terminal of the Marquam Hill Connector
- Additional Parkway signage
- Collaborative design of the Connector to minimize impacts
 - Low-profile head house

Next Step: Stakeholder Engagement on Mitigation

- Anticipated groups and organizations may include:
 - Restore Oregon
 - Oregon Historical Society
 - DocoMoMo Oregon
 - Congregation Ahavath Achim
 - Friends of Terwilliger
 - South Portland Neighborhood

Project Timeline



Land Use Actions

★ 30% Design
Fall 2020

★ 60% Design
Late 2021

★ 90% Design
Late 2022

Questions? Comments?

trimet.org/swcorridor

