

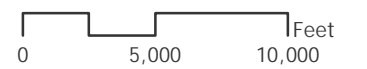
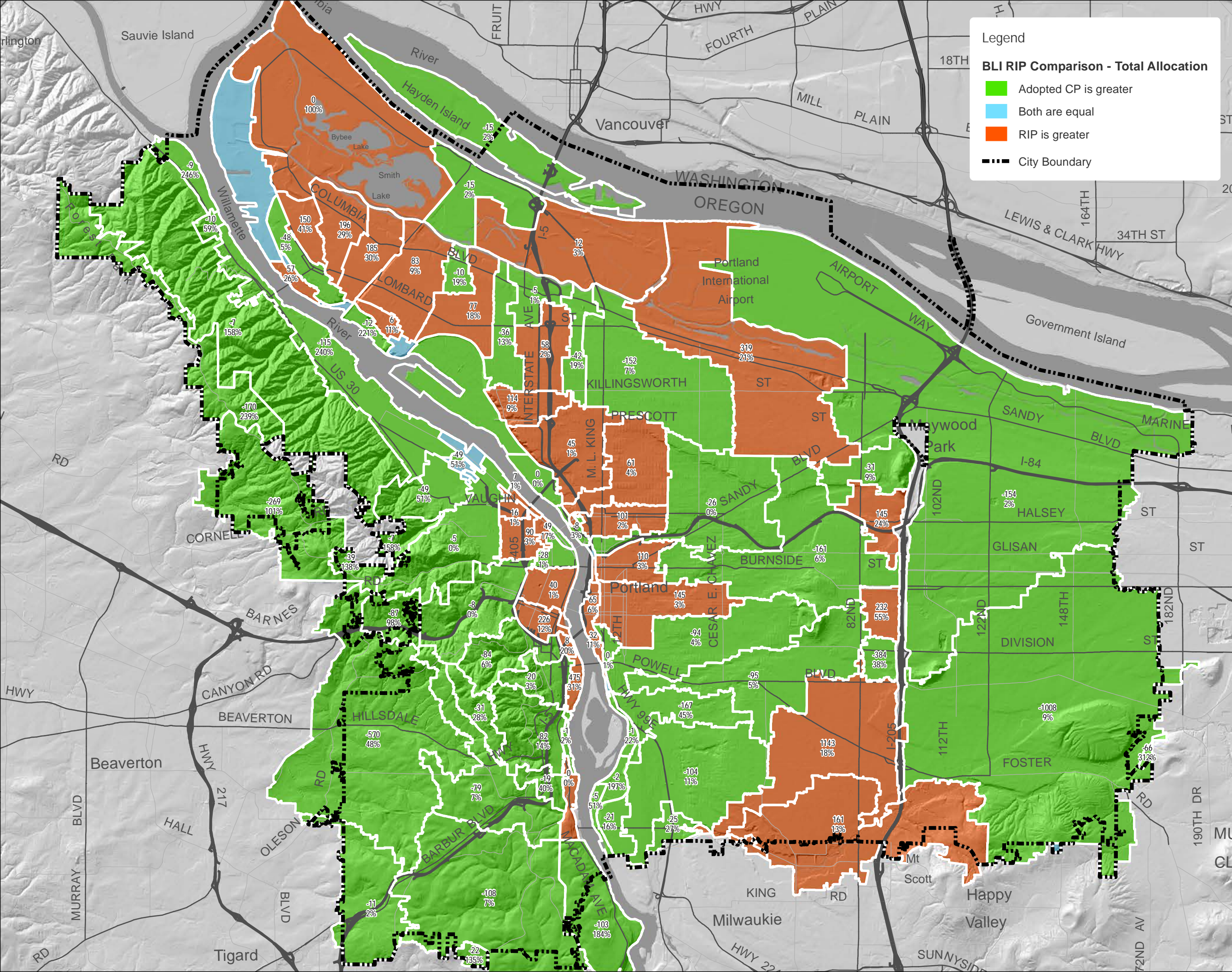
# Sewer Basins BLI Comparison

## Residential Infill Project Scenario

### Legend

#### BLI RIP Comparison - Total Allocation

- Adopted CP is greater
- Both are equal
- RIP is greater
- City Boundary



The information on this map was derived from City of Portland GIS databases. Care was taken in the creation of this map but it is provided "as is". The City of Portland cannot accept any responsibility for error, omissions or positional accuracy.



**Bureau of Planning and Sustainability**  
Innovation. Collaboration. Practical Solutions.



City of Portland, Oregon  
Ted Wheeler, Mayor • Susan Anderson, Director



HOL	Holladay	C	438.8684	144--172	31274	1.240293	75.23986	4307.061	4383.541294	1.240293	34	4250.764	4286.425	1.240293	4681.035	4682.275	4484.350303	RIP is greater	16934949	
HOLS	Holladay	S	438.8684	142--170	30743	0	0	289.6437	289.643701	0	0	273.0213	273.0213	0	290.2448	290.2448	281.633046	Adopted CP is greater	1990892	
SUL	Sullivan	C	1837.934	137--209	29452	199.2411	410.1154	5281.084	5890.440711	199.2411	135	5008.528	5342.645	199.2411	6187.323	6386.564	5864.604298	Adopted CP is greater	78858110	
SULS	Sullivan	S	1837.934	138--174	29678	0	0	0	0	0	0	0	0	0	0	0	0	0	both are the same	447229.7
OAK	Oak	C	375.0248	128--187	27031	30.04857	40.09259	3417.72	3487.860862	30.04857	33	3285.668	3348.323	30.04857	3818.344	3848.392	3598.357613	RIP is greater	16670756	
OAKS	Oak	S	375.0248	130--173	27523	0	0	0	0	0	0	145.3392	145.3434	0	154.5369	154.5369	149.940143	RIP is greater	626144.2	
DIV	Division	C	135.5553	101--177	19801	0	3.551598	21.42403	24.975628	0	5	20.53031	25.37109	0	24.23372	24.23372	24.802403	Adopted CP is greater	3508088	
DIVS	Division Sa	S	271.1106	98--177	18996	0	0	246.1401	246.140107	0	1	264.5324	265.7737	0	289.9004	289.9004	277.837071	RIP is greater	1787090	
TGD	Taggart D	C	1471.8	93--180	17654	267.4333	582.0699	1915.88	2765.383123	267.4333	365	1891.914	2524.124	267.4333	2551.045	2818.478	2671.301187	Adopted CP is greater	63811861	
TGDS	Taggart D	S	1471.8	93--177	17651	0	0	0	0	0	0	0	0	0	0	0	0	0	both are the same	387178.1
TGA	Taggart A	C	672.0711	71--184	11713	39.29275	226.9354	272.4847	538.712858	39.29275	88	263.686	391.2556	39.29275	312.9795	352.2723	371.763949	Adopted CP is greater	27721093	
TGAS	Taggart A	S	672.0711	73--181	12246	0	0.607645	2.607279	3.214924	0	0	2.313419	2.588666	0	2.678946	2.678946	2.633806	Adopted CP is greater	3190887	
INS	Insley	C	2050.014	37--184	3273	165.8233	338.301	563.4046	1067.528894	165.8233	278	607.7548	1051.845	165.8233	708.8134	874.6367	963.240817	Adopted CP is greater	84424751	
INSS	Insley	S	2050.014	57--174	7992	0.108137	3.181366	0	3.289503	0.108137	1	0	1.143385	0.108137	0.960831	1.068968	1.106177	Adopted CP is greater	5523613	
SEL	Sellwood	C	362.8639	36--183	3142	69.68404	23.96033	62.19634	155.840709	69.68404	10	59.26421	138.9349	69.68404	61.18197	130.866	134.900454	Adopted CP is greater	10229696	
SELS	Sellwood	S	362.8639	40--176	3701	0	3.760668	10.87894	14.639608	0	1	11.61764	12.57294	0	6.871433	6.871433	9.722185	Adopted CP is greater	3687906	
CAL	California	C	345.732	55--162	7459	20.22895	47.87964	0.259748	68.368332	20.22895	42	0.346771	62.17492	20.22895	15.42299	35.65193	48.913424	Adopted CP is greater	8396745	
CALS	California S	S	1037.196	46--161	5077	0.661985	0.426094	16.99966	18.087738	0.661985	0	15.28415	16.0975	0.661985	19.4243	20.08628	18.091894	RIP is greater	6696156	
SHE	Sheridan	C	631.58	93--138	17612	23.23324	195.2601	1195.466	1413.959434	23.23324	66	1246.754	1336.386	23.23324	1301.271	1324.504	1330.445317	Adopted CP is greater	26064752	
SHES	Sheridan	S	631.58	106--164	21132	0	0	32.43083	32.430828	0	0	39.51527	39.51527	0	42.00809	42.00809	40.761678	RIP is greater	1705367	
FRE	Fremont	C	124.6752	151--145	33153	0	0	1149.332	1149.332042	0	9	1075.801	1084.818	0	1246.463	1246.463	1165.64038	RIP is greater	3506698	
FRES	Fremont	S	124.6752	152--155	33450	0	0	723.2059	723.205923	0	2	699.8382	702.0252	0	759.2824	759.2824	730.653796	RIP is greater	1936035	
BALS	Balch	S	972.28	163--133	36604	0	0	0	0	0	0	0	0	0	0	0	0	0	both are the same	5957390
BAL	Balch	C	1458.42	151--118	33126	40.12291	66.35239	38.43016	144.905465	40.12291	28	40.64454	109.2103	40.12291	42.14795	82.27087	95.740571	Adopted CP is greater	26864855	
NIC	Nicolai	C	1317.549	124--117	25926	83.02727	275.8866	1123.531	1482.445156	83.02727	97	1191.789	1371.836	83.02727	1500.85	1583.877	1477.856747	Adopted CP is greater	56516512	
NICS	Nicolai	S	1317.549	164--135	36895	0	0	0	0	0	0	0	0	0	0	0	0	0	both are the same	501339
BAY	Bayard	C	727.6925	205--139	49153	49.24082	161.8063	136.654	347.701132	49.24082	374	139.8567	563.3566	49.24082	236.8929	286.1337	424.745127	RIP is greater	28857721	
BAYS	Bayard	S	727.6925	205--110	49124	0	0	0	0	0	0	0	0	0	0	0	0	0	both are the same	2831819
ORE	Oregonian	C	536.5526	224--94	53967	45.07627	124.8031	267.7248	437.604185	45.07627	371	261.2673	677.2914	45.07627	523.757	568.8333	623.062326	RIP is greater	22394777	
ORES	Oregonian	S	536.5526	219--93	52704	0	0	0	0	0	0	0	0	0	0	0	0	0	both are the same	1029257
SJBS	St. Johns B	S	465.5308	223--86	53710	0	0	0	0	0	0	0	0	0	0	0	0	0	both are the same	115895.6
SJB	St. Johns B	C	465.5308	223--87	53711	23.37025	298.5316	767.6661	1089.567898	23.37025	201	776.4836	1000.748	23.37025	1059.19	1082.56	1041.653806	Adopted CP is greater	15659217	
SJBS	St. Johns B	S	465.5308	236--75	56948	0	0	0	0	0	0	0	0	0	0	0	0	0	both are the same	538221.9
TANS	Tanner B S	S	301.0729	142--158	30731	0	0	235.9251	235.925063	0	0	276.0537	276.0537	0	293.4686	293.4686	284.76112	RIP is greater	2416954	
TANB	Tanner B	C	602.1459	138--143	29647	0	0	2566.918	2566.918459	0	11	2489.783	2500.29	0	2812.638	2812.638	2656.463805	RIP is greater	10746758	
BEES	Beech/Esse	S	2329.114	155--161	34325	0	0	53.80879	53.808785	0	0	50.6157	51.01449	0	56.59736	56.59736	53.805924	Adopted CP is greater	8569995	
BEE	Beech/Esse	C	3493.671	156--164	34617	35.59353	461.8881	2667.075	3164.556951	35.59353	372	2579.199	2987.101	35.59353	3397.143	3432.737	3209.918772	RIP is greater	42089314	
ALD	Alder	C	2137.435	108--183	21689	116.6179	204.4016	3764.495	4085.514297	116.6179	119	3738.472	3974.275	116.6179	4370.111	4486.729	4230.501835	RIP is greater	39678746	
ALDS	Alder Sanit	S	3273.93	112--171	22753	0	0	1069.319	1069.319187	0	3	1089.729	1092.301	0	1176.461	1176.461	1134.381416	RIP is greater	4691891	
WOO	Woods	C	462.8632	89--161	16551	26.96667	81.39087	709.9895	818.347009	26.96667	7	751.8073	786.2295	26.96667	783.2736	810.2402	798.234875	Adopted CP is greater	15685990	
WOOS	Woods	S	2314.316	88--164	16280	0	0	1052.306	1052.306413	0	4	1464.696	1468.826	0	1585.868	1585.868	1527.347314	RIP is greater	4478552	
CAR	Carolina	C	824.817	67--159	10612	66.86303	146.6582	441.7411	655.262363	66.86303	67	420.0816	554.1947	66.86303	524.6611	591.5241	572.859415	Adopted CP is greater	33641210	
CARS	Carolina Sa	S	1649.634	67--165	10618	0	20.40513	51.44263	71.847761	0	0	61.87803	62.01482	0	79.30889	79.30889	70.661851	Adopted CP is greater	2209494	