

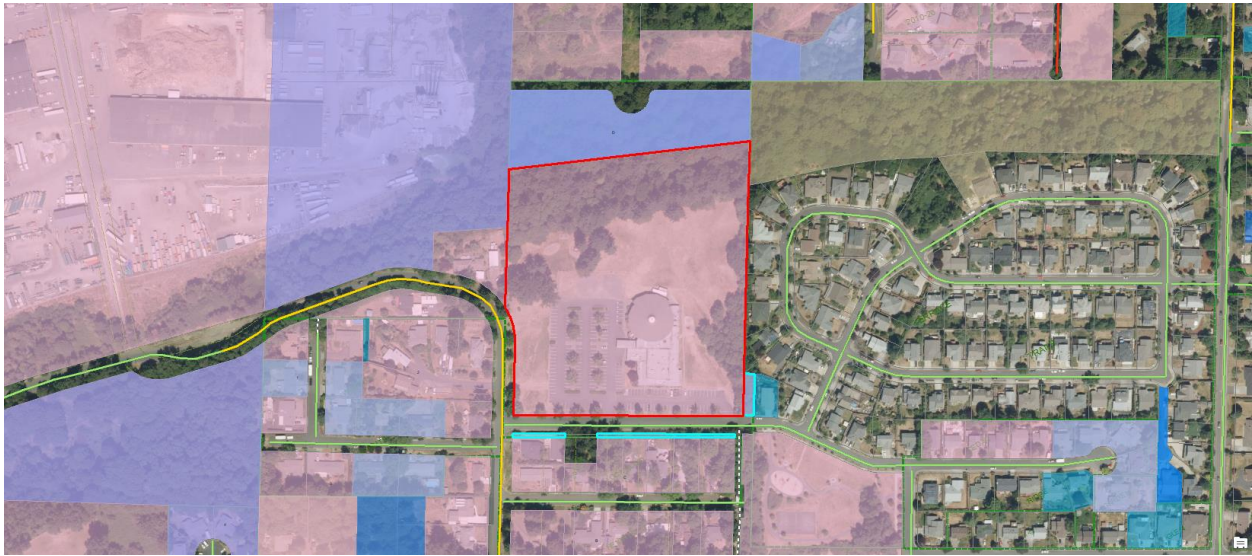
1 Emmanuel Temple Church
1033 N Sumner St
R210702



- BLI Constraints (Individual)
- Transportation Capacity (conTranCap)
■
 - Highway Interchanges (conTranInt)
■
 - Substandard Streets (conTranSub)
■
 - Water System (conWater)
■
 - Sewer (conSewer)
■
 - Stormwater (conStorm)
■

- Street Surface
- Paved without curb
 - Paved with curb
 - Unpaved
 - Impassable

2 Mount Scott Church of God
 10603 SE Henderson St
 R336867, R336872, R336873, R588872



- BLI Constraints (Individual)**
- Transportation Capacity (conTranCap)
 - Highway Interchanges (conTranInt)
 - Substandard Streets (conTranSub)
 - Water System (conWater)
 - Sewer (conSewer)
 - Stormwater (conStorm)

- Street Surface**
- Paved without curb
 - Paved with curb
 - Unpaved
 - Impassable

E-Zones Map About

Request Site Visit

This property qualifies for a site visit.

If you think the natural resources (streams, wetlands, flood area, vegetation or steep slopes) are mapped incorrectly, staff can perform a site visit. If you have questions, please call 503-823-4225 or send an email to ezones@portlandoregon.gov

10603 SE HENDERSON ST
 Property details: [Portlandmaps.com R336867](https://portlandmaps.com/R336867)

Plan Area(s): Boring Lava Domes
 Resource Site(s): Indian Rock Creek - BL3

Zoning

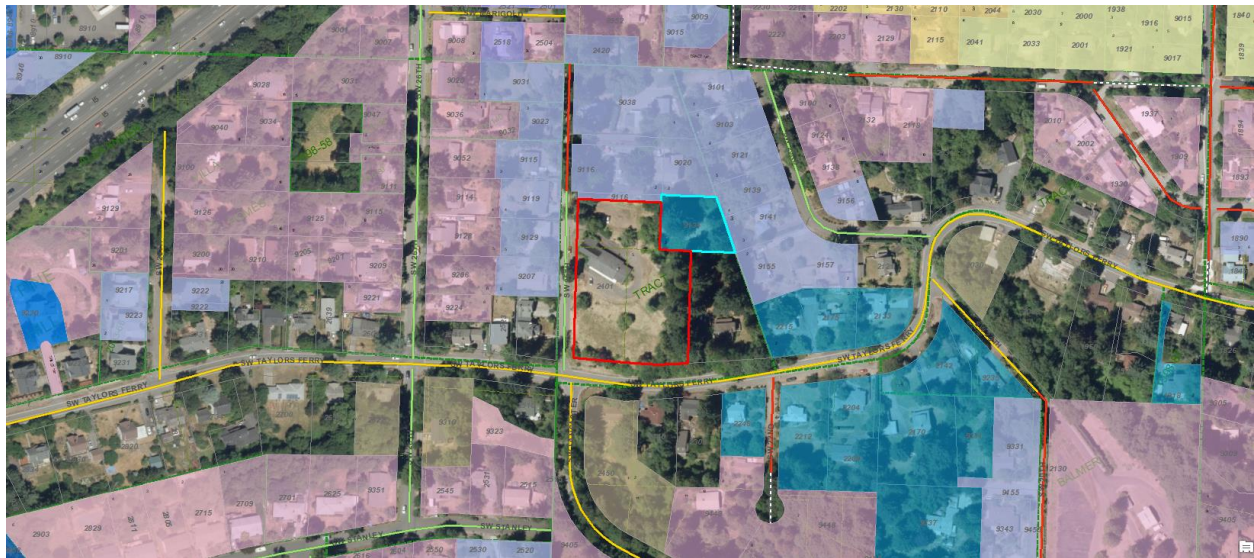
Base Zone(s):	Residential 10,000 (R10)
Overlay Zone(s):	Environmental Conservation (c) Environmental Protection (p)
Remapped Overlay Zone(s):	Environmental Conservation (c) Environmental Protection (p)

Note: Overlay zones subject to map correction as part of the E-Zones Map Correction Project include: Environmental Conservation (c), Environmental Protection (p).

These overlay zones are mapped in accordance with the methods outlined in the [Environmental Overlay Zone Map Correction Project Discussion Draft \(pdf\)](#).

To view base zone and overlay zone summaries, visit the [Portland Zoning](#) application.

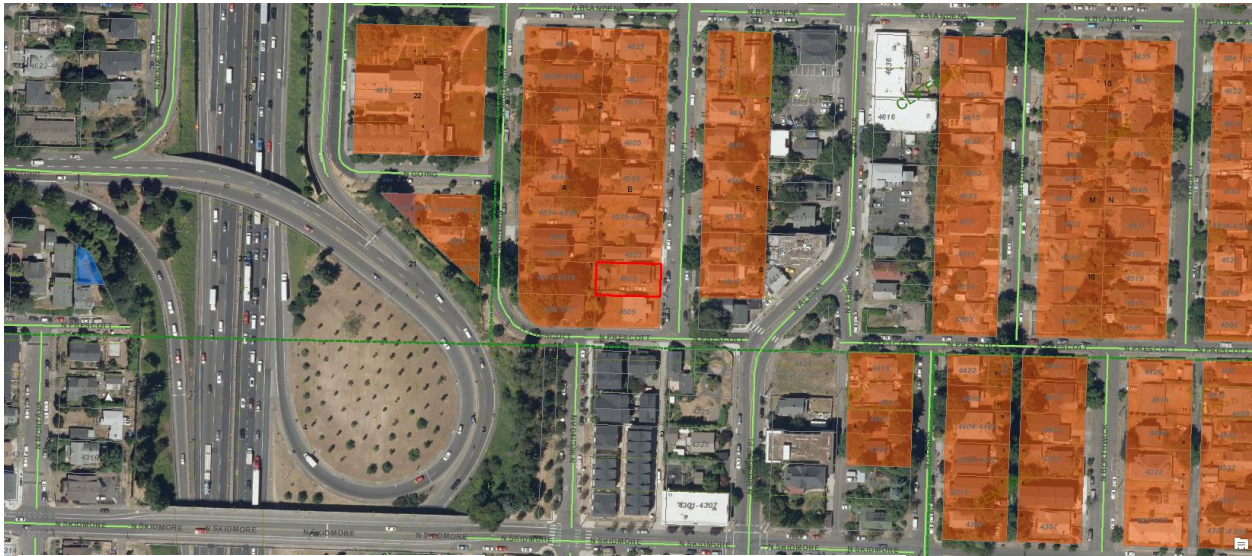
3 Habitat for Humanity/Metro
 2401 SW Taylors Ferry Rd (9134 SW 25th Ave)
 R163068, R163067



- BLI Constraints (Individual)**
- Transportation Capacity (conTranCap)
 - Highway Interchanges (conTranInt)
 - Substandard Streets (conTranSub)
 - Water System (conWater)
 - Sewer (conSewer)
 - Stormwater (conStorm)

- Street Surface**
- Paved without curb
 - Paved with curb
 - Unpaved
 - Impassable

4 **Dianne Clay residence**
 4515 N Mississippi Ave
 R135550



BLI Constraints (Individual)

- Transportation Capacity (conTranCap)
- Highway Interchanges (conTranInt)
- Substandard Streets (conTranSub)
- Water System (conWater)
- Sewer (conSewer)
- Stormwater (conStorm)

Street Surface

- Paved without curb
- Paved with curb
- Unpaved
- Impassable

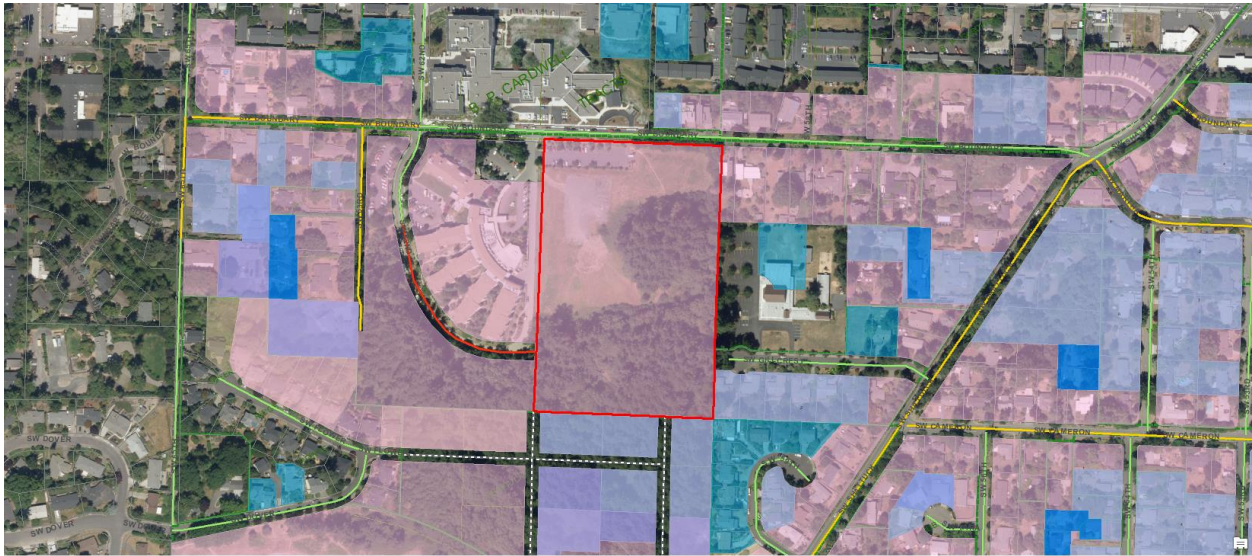
5 **Mount Tabor Presbyterian Church**
 5441 SE Belmont St
 R221875, R221878, R221879, R221880, R221881



- BLI Constraints (Individual)**
- Transportation Capacity (conTranCap)
 - Highway Interchanges (conTranInt)
 - Substandard Streets (conTranSub)
 - Water System (conWater)
 - Sewer (conSewer)
 - Stormwater (conStorm)

- Street Surface**
- Paved without curb
 - Paved with curb
 - Unpaved
 - Impassable

6 Robison Jewish Home
 Parcel east of 6140 SW Boundary St
 R329032



- BLI Constraints (Individual)**
- Transportation Capacity (conTranCap)
 - Highway Interchanges (conTranInt)
 - Substandard Streets (conTranSub)
 - Water System (conWater)
 - Sewer (conSewer)
 - Stormwater (conStorm)

- Street Surface**
- Paved without curb
 - Paved with curb
 - Unpaved
 - Impassable

E-Zones
Map About

Request Site Visit

This property qualifies for a site visit.

If you think the natural resources (streams, wetlands, flood area, vegetation or steep slopes) are mapped incorrectly, staff can perform a site visit. If you have questions, please call 503-823-4225 or send an email to ezones@portlandoregon.gov

SW BOUNDARY ST
 Property details: [Portlandmaps.com R329032](http://Portlandmaps.com/R329032)

Plan Area(s): Fanno Creek
 Resource Site(s): Pendleton Tributary West - FC6

Zoning

Base Zone(s):	Residential 10,000 (R10)
Overlay Zone(s):	Environmental Conservation (c)
Remapped Overlay Zone(s):	Environmental Conservation (c)

Note: Overlay zones subject to map correction as part of the E-Zones Map Correction Project include: Environmental Conservation (c), Environmental Protection (p).

These overlay zones are mapped in accordance with the methods outlined in the [Environmental Overlay Zone Map Correction Project Discussion Draft \(pdf\)](#).

To view base zone and overlay zone summaries, visit the [Portland Zoning](#) application.

Natural Resources

7 Evergreen Community / Tillamook Preschool
 935 NE 33rd Ave
 R316847



BLI Constraints (Individual)

- Transportation Capacity (conTranCap)
- Highway Interchanges (conTranInt)
- Substandard Streets (conTranSub)
- Water System (conWater)
- Sewer (conSewer)
- Stormwater (conStorm)

Street Surface

- Paved without curb
- Paved with curb
- Unpaved
- Impassable