

# EQUITY AND HOUSING AFFORDABILITY

Southwest Corridor Light Rail Project partners are collaborating to ensure that low-income households and communities of color benefit from this major transportation investment and continue to live, work and thrive in the Southwest Corridor.



Source: Metro - Southwest Corridor Equitable Development Strategy

2011

Community engagement begins for **Southwest Corridor Plan**. The plan envisions livable, affordable, economically-thriving community with reliable and safe transportation options for every resident and commuter.

2016

The Federal Transit Administration awards Metro an \$895,000 grant to develop a **Southwest Equitable Development Strategy (SWEDS)**. The program aims to support Southwest Corridor neighborhoods with affordable housing choices for people of all incomes and cultures, a range of jobs for people of all backgrounds, learning opportunities that prepare people for those jobs, and wages that support people's desire to live and work in the corridor. Sub-grants are awarded to community-based organizations to develop **pilot projects** in the areas of business/workforce development and housing. The Portland and Tigard Equitable Housing Strategy becomes a part of SWEDS.

2018

A **memorandum of understanding (MOU)** among TriMet, Metro, Washington County and the cities of Tigard and Portland pledges to identify sites that could accommodate **750-950 units** of affordable housing, and identify the needed programs and regulatory support to make it happen.

2019

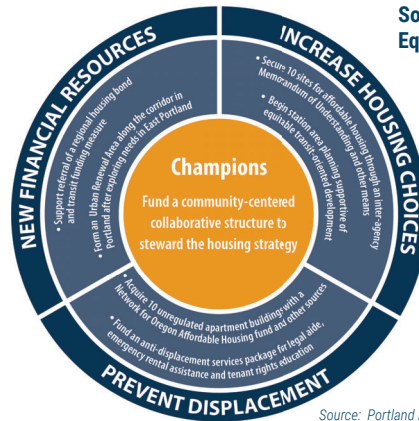
Metro requests a \$1.2 million grant from the Federal Transit Administration to **expand on SWEDS work**. The proposed project will focus on workforce stabilization, business stabilization and broad-based economic development.



Source: Metro - Southwest Corridor Equitable Development Strategy

**Stay informed:** Visit our website to learn more about the project and how to sign up for notifications about community meetings and project news.

[trimet.org/swcorridor](http://trimet.org/swcorridor)



Source: Portland Bureau of Planning and Sustainability

2016

Metro awards **Equitable Housing Grants** to the cities of Portland and Tigard to develop a unified, strategic approach to affordable and market rate housing for the entire SW Corridor.



Source: Metro - Southwest Corridor Equitable Development Strategy

2018

Voters approve a \$652.8 million **affordable housing bond** that includes targets to preserve or construct 3,900 units for low-income renters throughout the region.

2018

The cities of Portland and Tigard adopt **Equitable Housing Strategies** that include goals for affordable rental housing to be constructed, acquired or converted:

- City of Portland: minimum of **300-350 units**, with a **stretch goal of 1,050-1,400**
- City of Tigard: minimum of **500 units**, with a **stretch goal of 750-900**

2020

SWEDS pilot projects conclude and program leadership evolves into a **Southwest Equity Coalition**, through funding from the Meyer Memorial Trust. The coalition serves as the collaborative organization for implementation and advocacy. With initial funding for the first two years, the coalition will test effective methods and establish a sustainable, community-led, collective impact model with a 10-year, \$10 million target.



Source: Metro - Southwest Corridor Equitable Development Strategy