



The Southwest Corridor Light Rail Project

Eric Engstrom
BPS

Teresa Boyle
PBOT

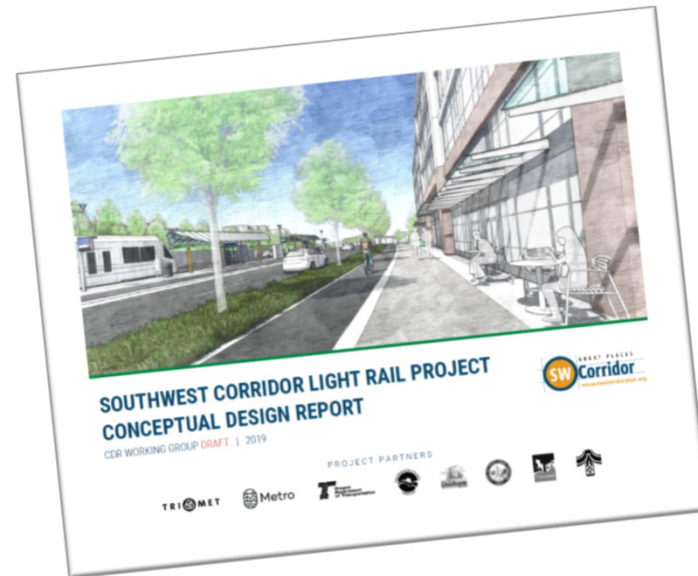
Dave Unsworth
TriMet



Conceptual Design Report (CDR)

Preliminary designs for:

- Overall vision
- Project benefits
- Stations
- Major structures
- Other corridor improvements
- Public engagement tool to inform future design



Project Milestones

- Jun 2018 Draft Environmental Impact Statement (DEIS) released
- Oct 2018 Portland adopts Equitable Housing Strategy
- Nov 2018 Locally Preferred Alternative (LPA) adopted by Metro Council
- **Feb 2020 Conceptual Design Report (CDR) published**
- Summer 2020 Final Environmental Impact Statement (FEIS) released
- Nov 2020 Metro Regional Funding Measure on ballot

Previous PSC Feedback

2018 Letters: DEIS, Housing Strategy, LPA

Key Concerns

- Housing goals
- Anti-displacement; tenant protections
- Housing MOU with TriMet
- Placemaking
- Active transportation
- Town Center planning, Crossroads design
- Ross Island Bridgehead
- Viaduct replacement
- Park & Rides

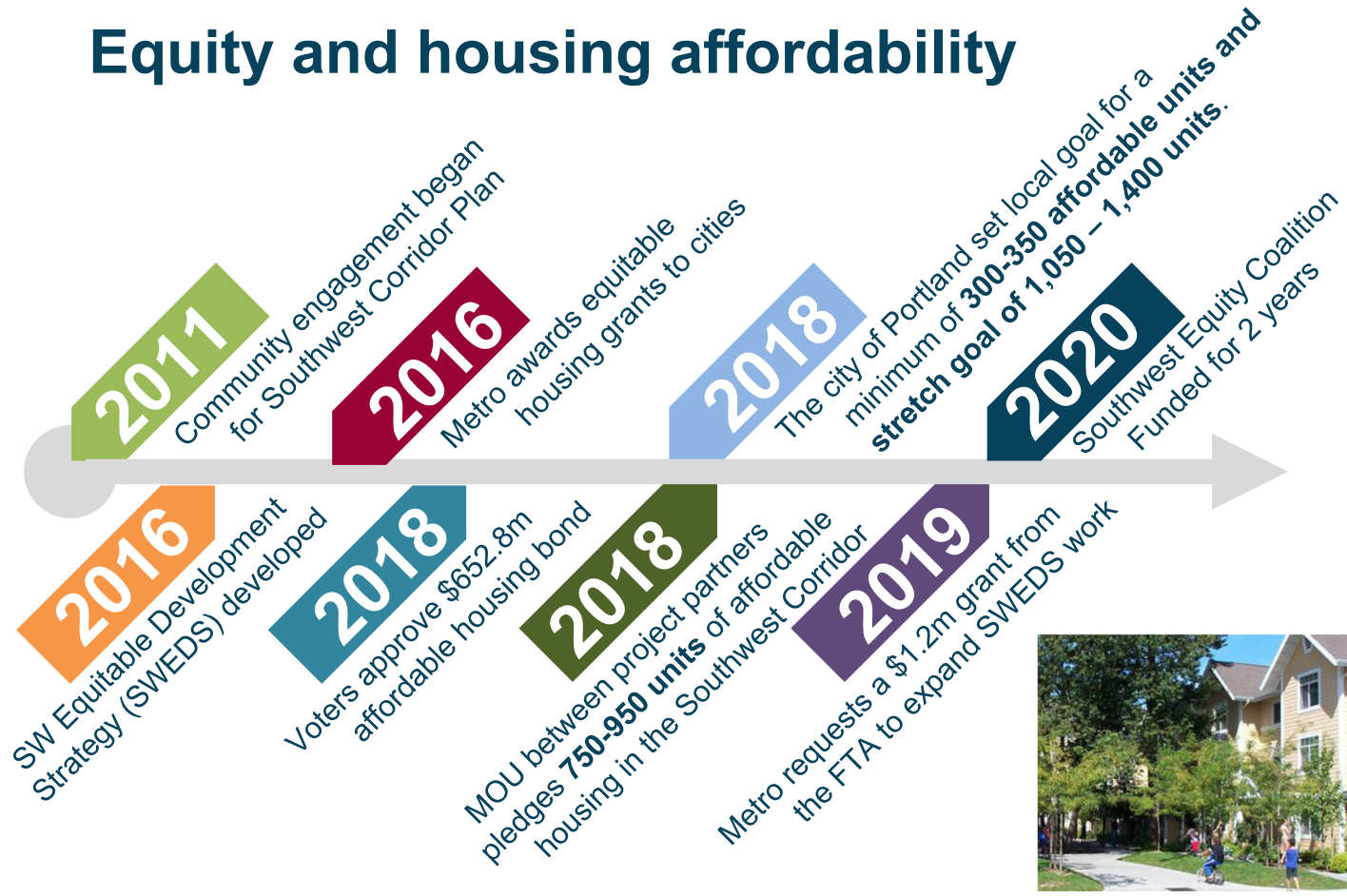
Video Fly-Through



Project Principles



Equity and housing affordability



More than light rail...



10 miles
of new sidewalks



6 miles
of improved bike facilities



1.6 miles
of shared transitway



2,000
Park & Ride spaces

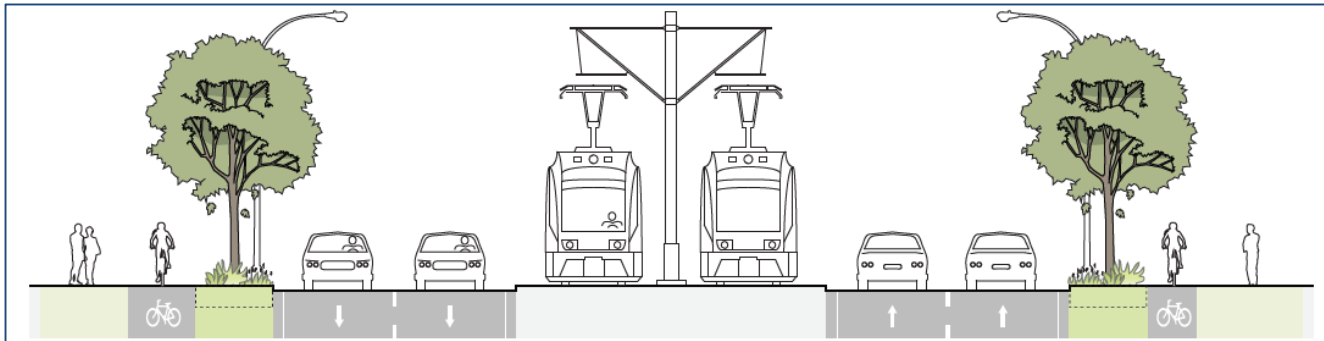
Existing Conditions



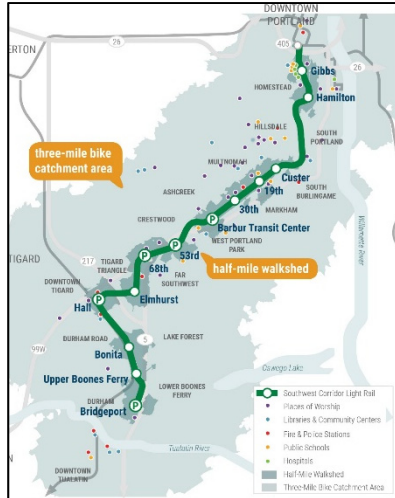
Future Vision



Streetscape Improvements



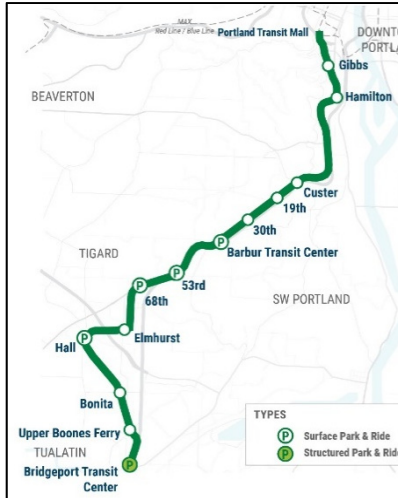
Station Access



**Walking
Biking**



Bus Transfers



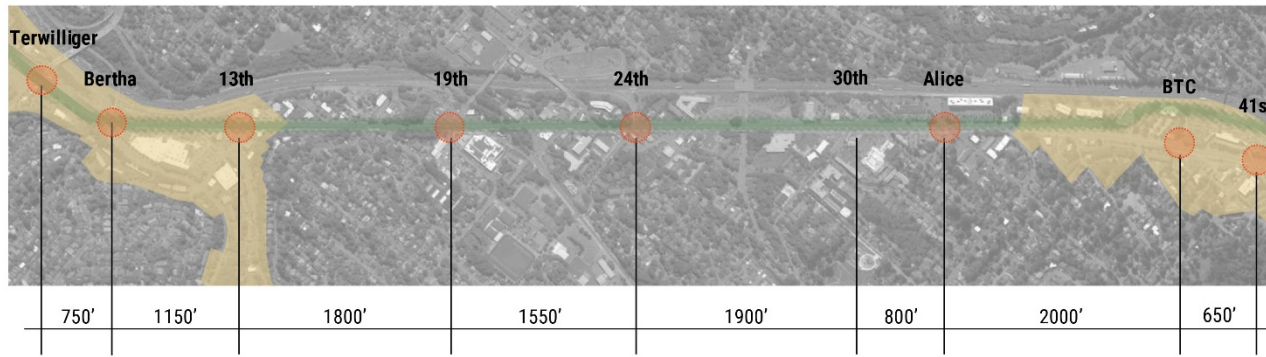
**Pick-up/Drop-off
Park & Rides**

Pedestrian Improvements

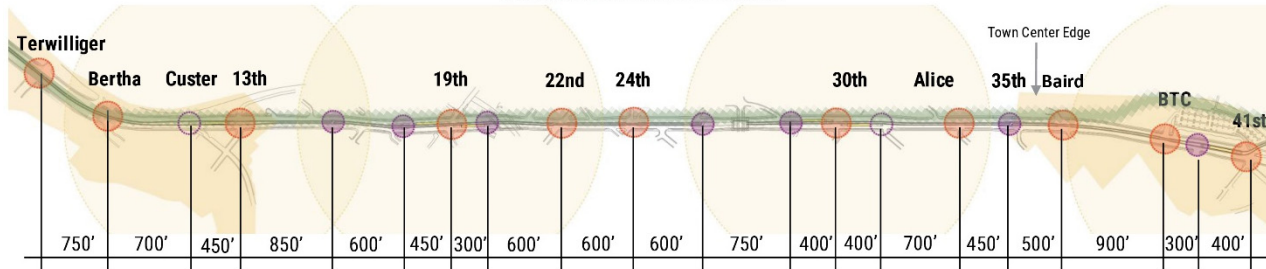
Barbur Blvd

- LEGEND**
- Southwest Corridor Light Rail
 - Pedestrian District
 - Traffic Signal (Vehicular Intersection)
 - Enhanced Pedestrian Crossing (Full Crosswalk)
 - Enhanced Pedestrian Crossing (Half Crosswalk to Platform)
 - 500' Spacing between Marked Crossings (feet)

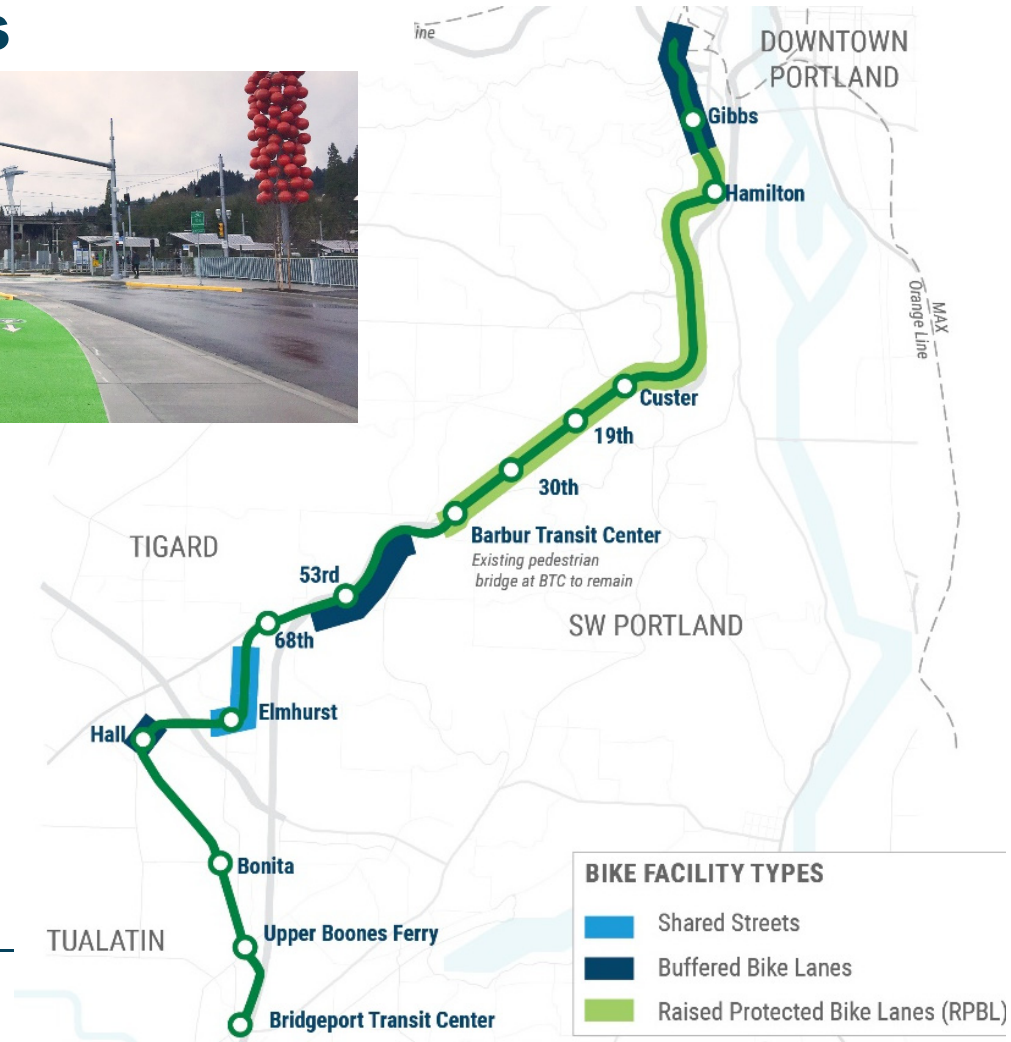
EXISTING SIGNALIZED INTERSECTIONS



PROPOSED PEDESTRIAN CROSSINGS



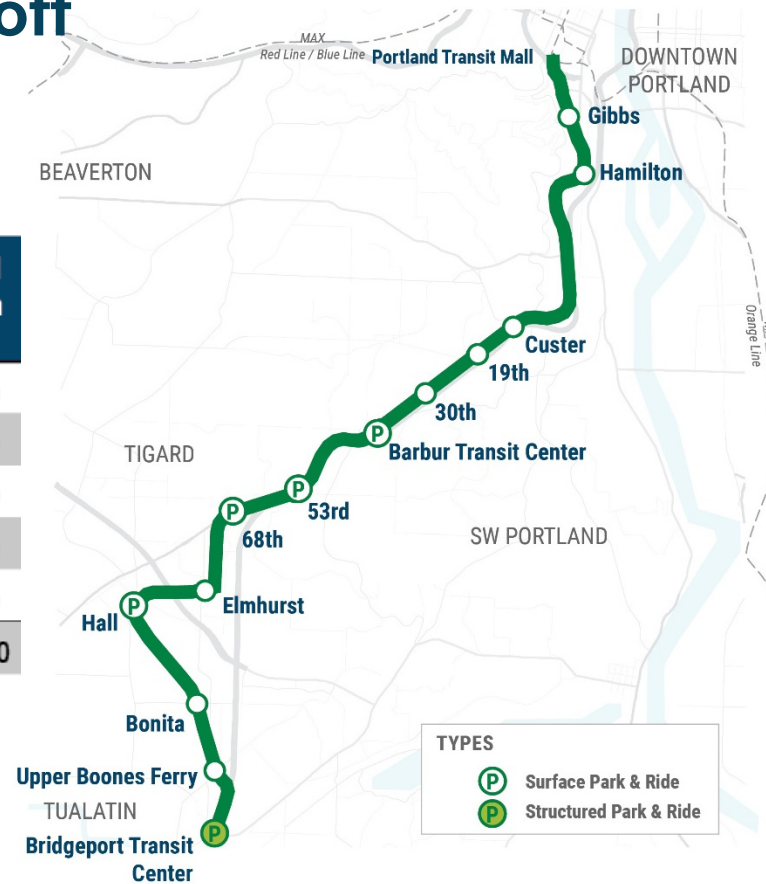
Bike Facilities



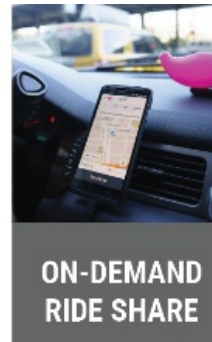
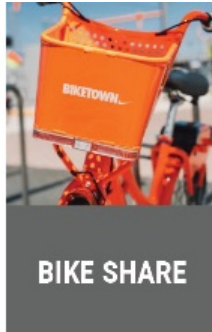
Auto: Pick-up/ Drop-off Park & Rides

Station Name	Existing	Proposed Maximum Quantity
Barbur Transit Center	368	up to 300
53rd Avenue	0	up to 310
68th Avenue	0	up to 350
Hall Boulevard	0	up to 100
Bridgeport Transit Center	368	up to 960
Total Spaces		up to 2,020

All station surface lots except Bridgeport Transit Center.



New Options to Connect (Mobility Hubs)



Station Access Projects

Shared Investment Strategy



Inner Portland Gibbs Street Station

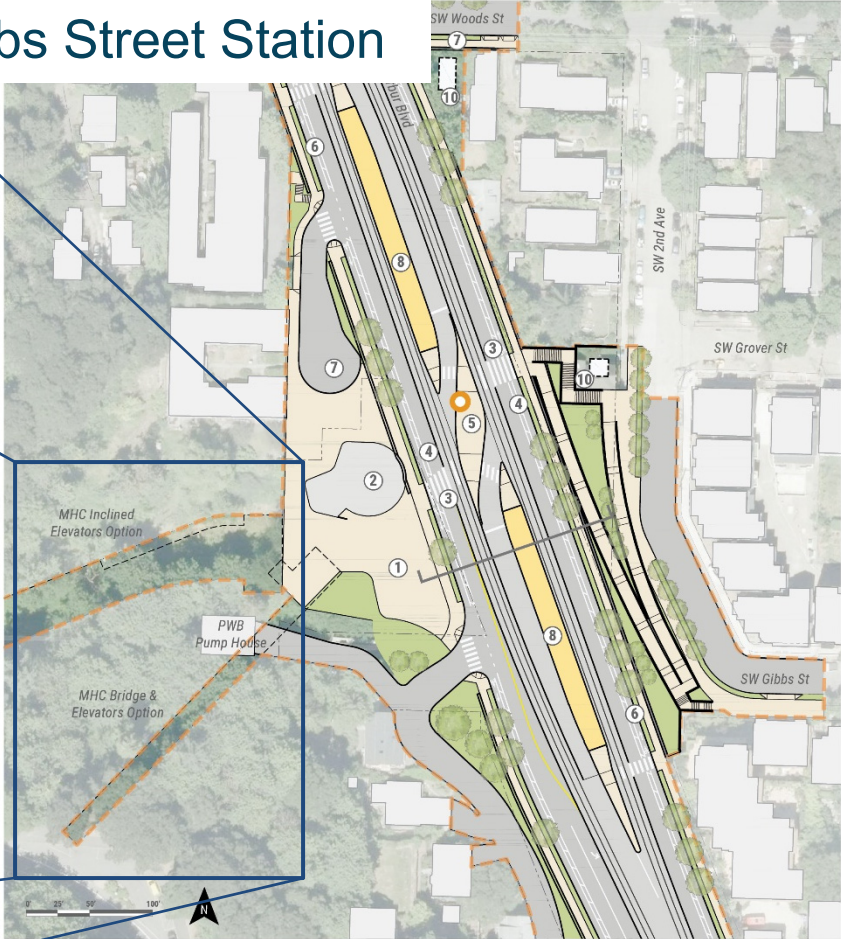
Marquam Hill Connector

Narrowed to 2 types:

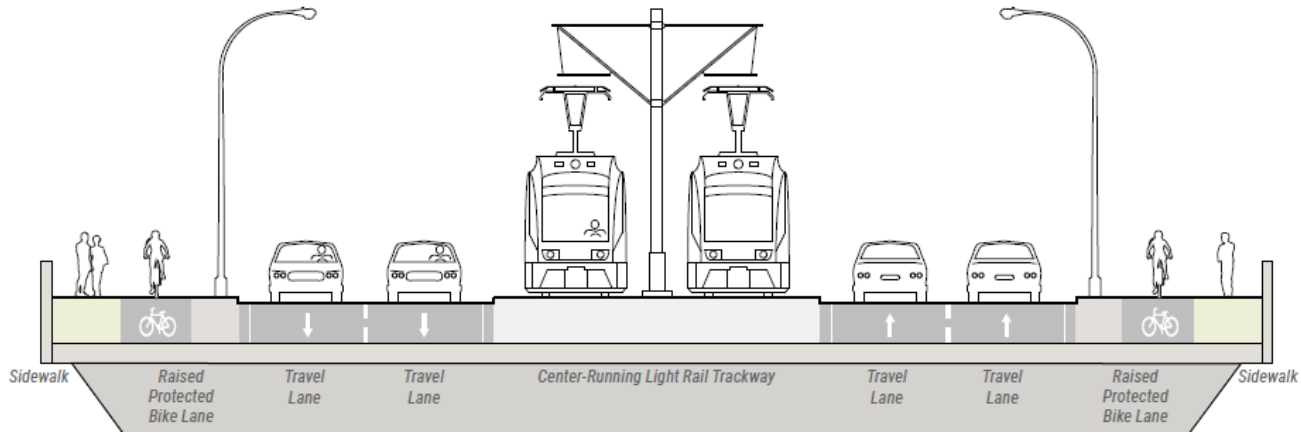
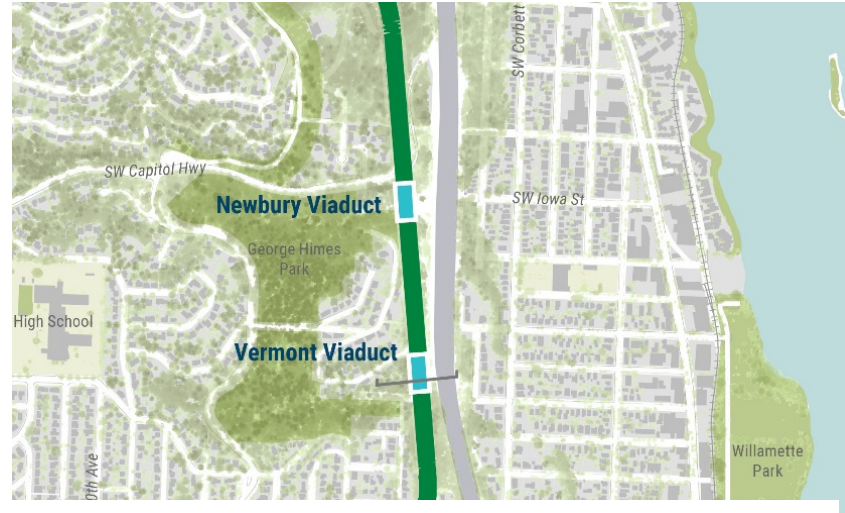
Inclined Elevator



Bridge and Elevators



Inner Portland Viaducts



Stormwater Improvements

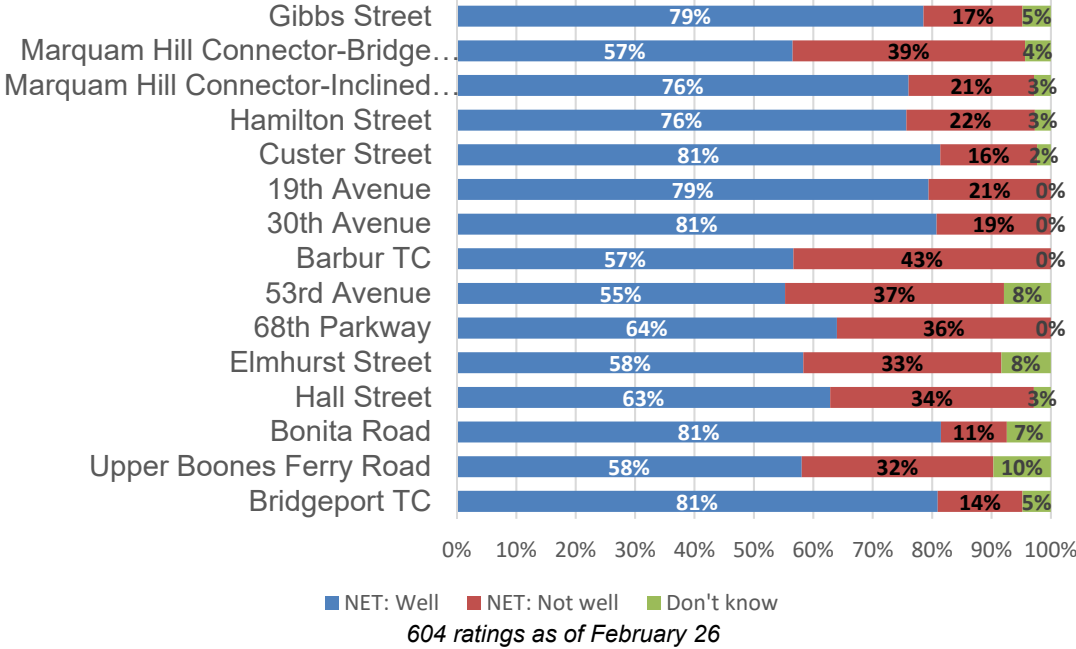


The project will **treat nearly 70 acres of existing impervious surface** – all currently unmanaged in the 11-mile corridor.



Stormwater improvements along the MAX Orange Line.

Community Feedback

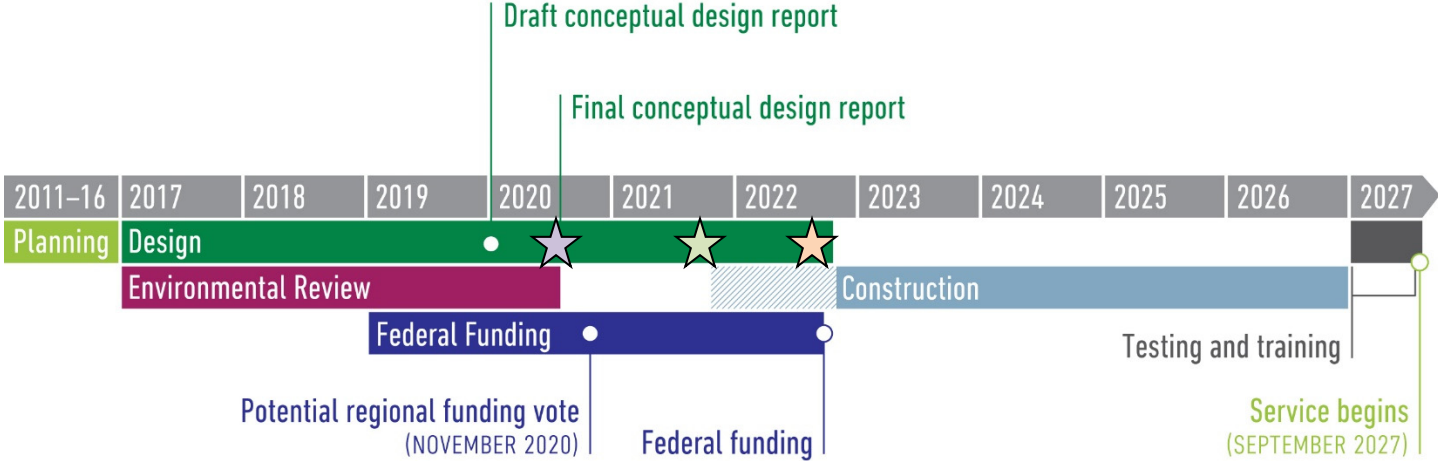


Online open house through March 27:
trimet.org/swcorridor

Work Program – What’s Next

March 19	Design Commission briefing
March 23	Historic Landmarks briefing
April 1	City Council – CDR resolution
May 5	City Council Work Session – Local Match
Late May	City Council considers regional investment measure
Fall	PSC - West Portland Town Center recommendation

Project Timeline



★ 30% Design
Fall 2020

★ 60% Design
Late 2021

★ 90% Design
Late 2022

SW Naito Main Street Project - Ross Island Bridgehead



Naito and Woods facing southeast

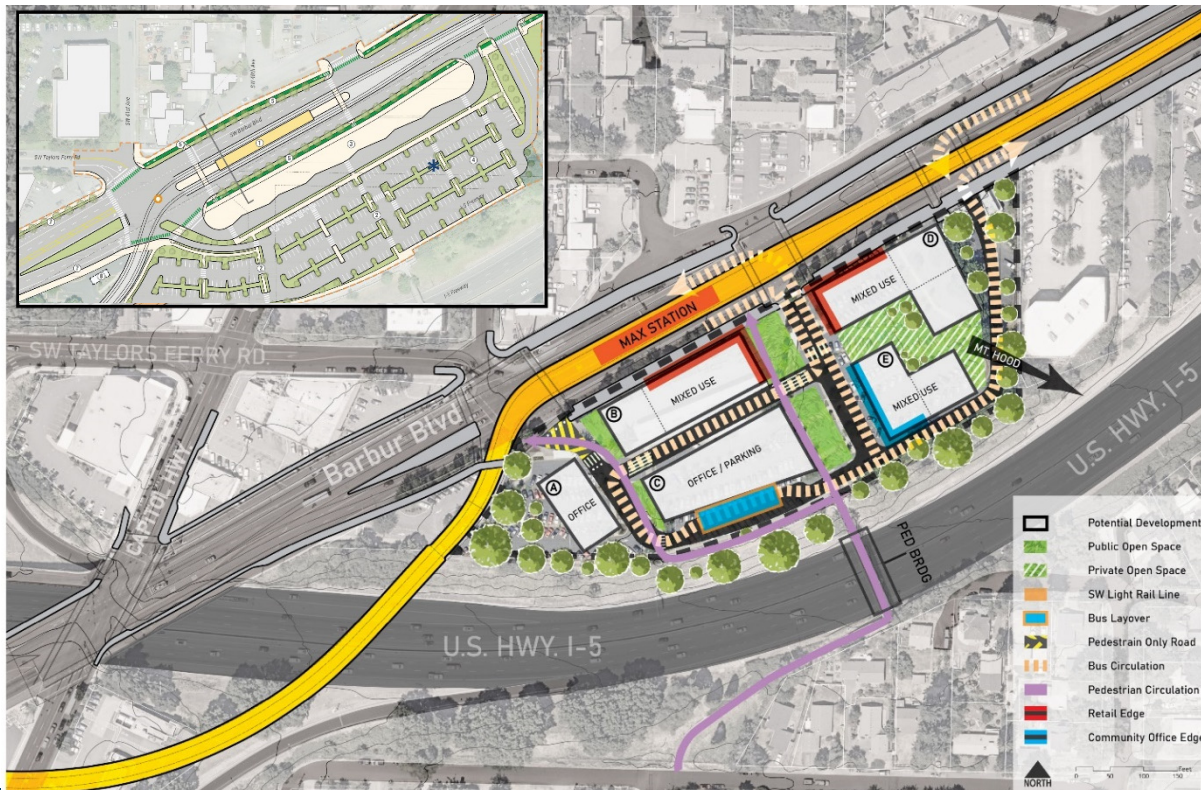


1st Ave and Woods facing east



West Portland Town Center

Barbur Transit Center Opportunity Site





Questions? Comments?

trimet.org/swcorridor

