



River Plan/South Reach PSC Briefing February 11, 2020



Bureau of Planning and Sustainability
Innovation. Collaboration. Practical Solutions.





Photo by Mike Houck



Bureau of Planning and Sustainability
Innovation. Collaboration. Practical Solutions.

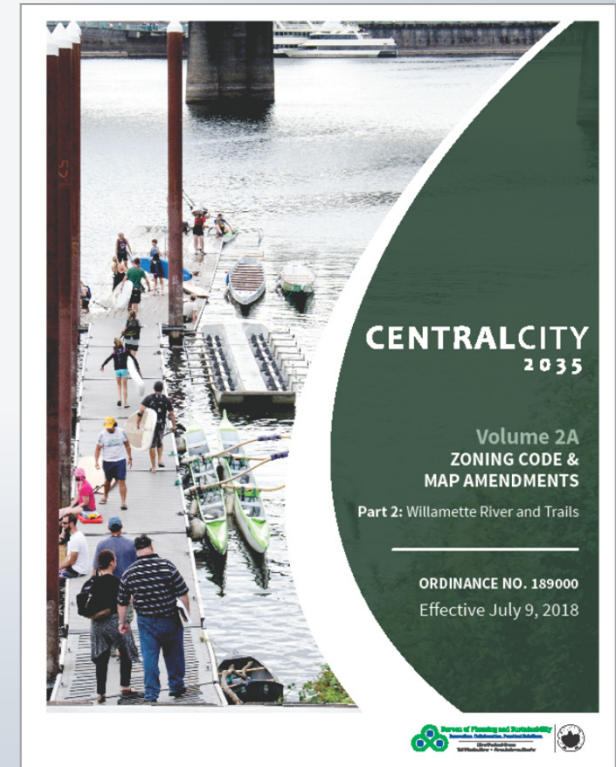
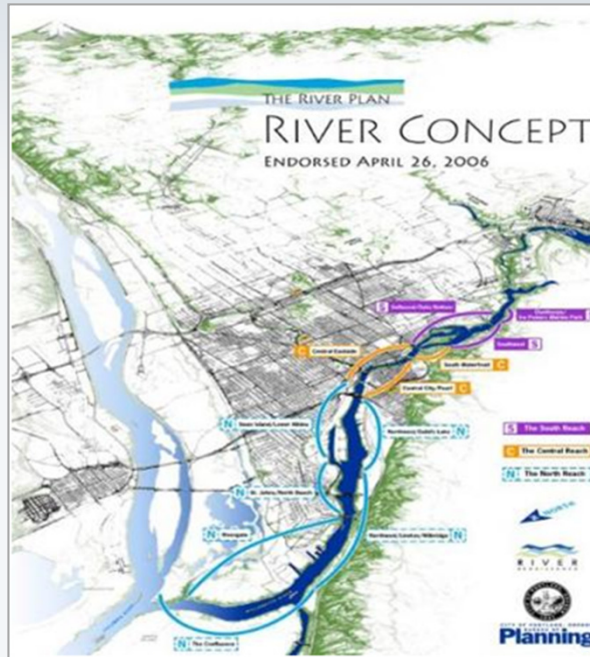
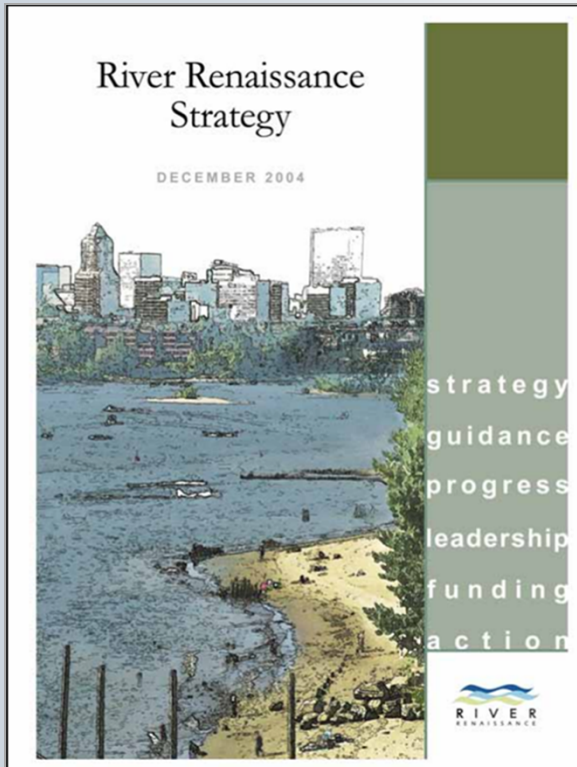


Briefing Overview

- Background
- Recommendations
- Related projects
- PSC questions



Previous Planning



Update to the *Willamette Greenway Plan*

- Vision
- Policy framework
- Updated map and zoning regulations
- Implementation actions
- Natural and scenic resources protection plans





Bureau of Planning and Sustainability
 Innovation. Collaboration. Practical Solutions.





Bureau of Planning and Sustainability
Innovation. Collaboration. Practical Solutions.



Policy Guidance

State Planning Goal 15, Willamette River Greenway

“To protect, conserve, enhance and maintain the natural, scenic, historical, agricultural, economic, and recreational qualities of lands along the Willamette River as the Willamette River Greenway.”

2035 Comprehensive Plan

Policy 3.81 “Enhance the role of the Willamette River South Reach as fish and wildlife habitat, a place to recreate, and as an amenity for riverfront neighborhoods and others.”



Planning Process

- Existing conditions
- Public outreach and engagement
- Intergovernmental Review Draft - Summer 2019
- Public Discussion Draft - Fall 2019
- Proposed Draft - Winter/Spring 2020
- Recommended Draft - Summer 2020



Outreach and Engagement

- Stakeholders
- Inter-bureau team
- Events, tours and meetings
- Tribes and urban Native community
- Intergovernmental Review and Discussion Draft comments



20-YEAR VISION



Urban Design Concept

- Habitat for fish, wildlife, native plants and people
- Safe place to walk, roll, run, paddle, swim, ride and view wildlife.
- Destination for riverfront neighborhoods and visitors



WATERSHED HEALTH AND RESILIENCE





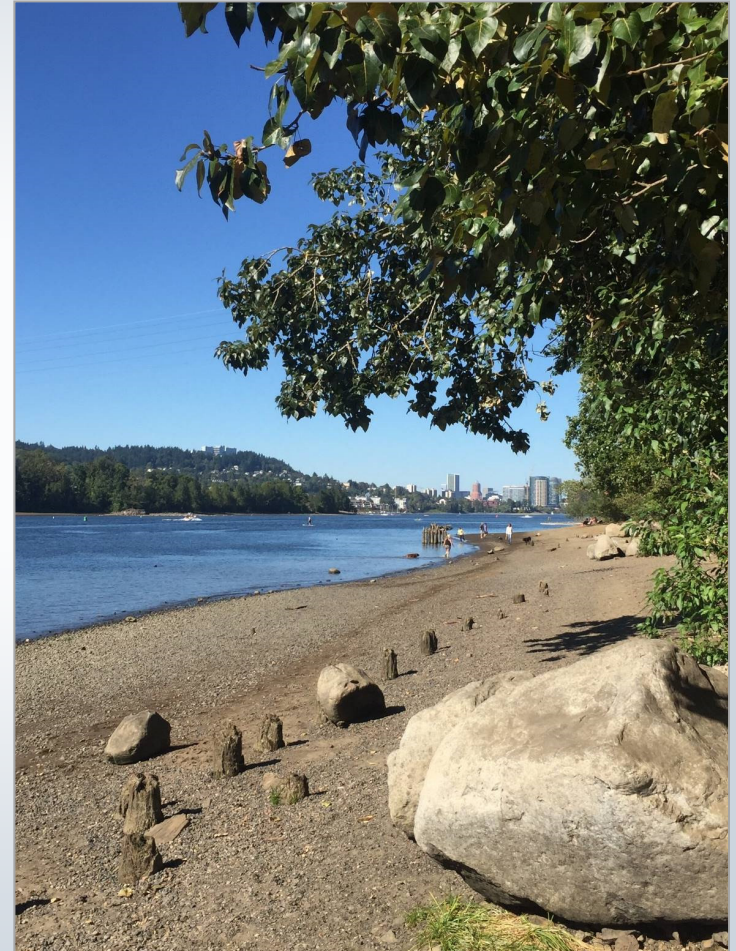
Watershed Health and Resilience Objectives

- Context-sensitive, climate-resilient development
- Appropriate natural resource protections
- Expansion of floodplain habitat for Threatened and Endangered species
- Identification of habitat restoration opportunities



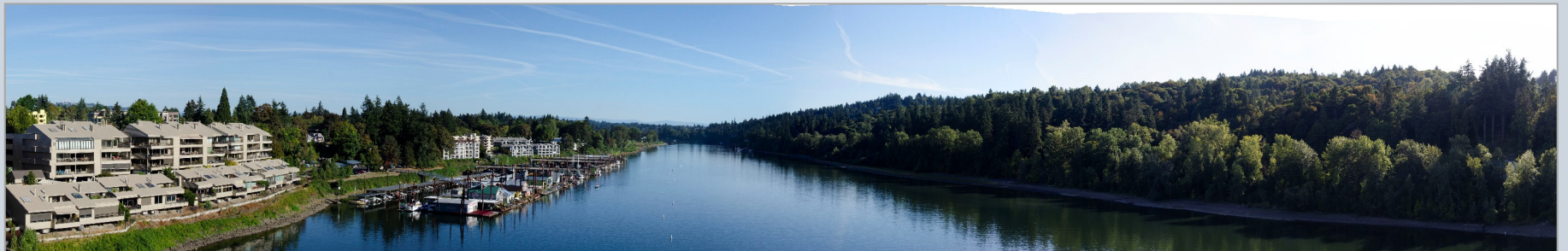
River Overlay Zones

- Either River General (g*) or River Recreational (r*)
- River Environmental (e) on high- and medium-ranked resources and floodplains



In-River and Riverbank Protections

- 50-foot river setback
- Streamlined landscaping standard
- Limit exemptions for vegetation removal
- Updated floodplain management regulations
- New residential dock standard



Vegetation Removal

- Removal of nuisance trees less than 1.5” diameter allowed via **exemption**
- Removal of other non-native vegetation allowed via **exemption**
- Tree removal allowed via **standards** in some situations
- **Review** required in all other circumstances

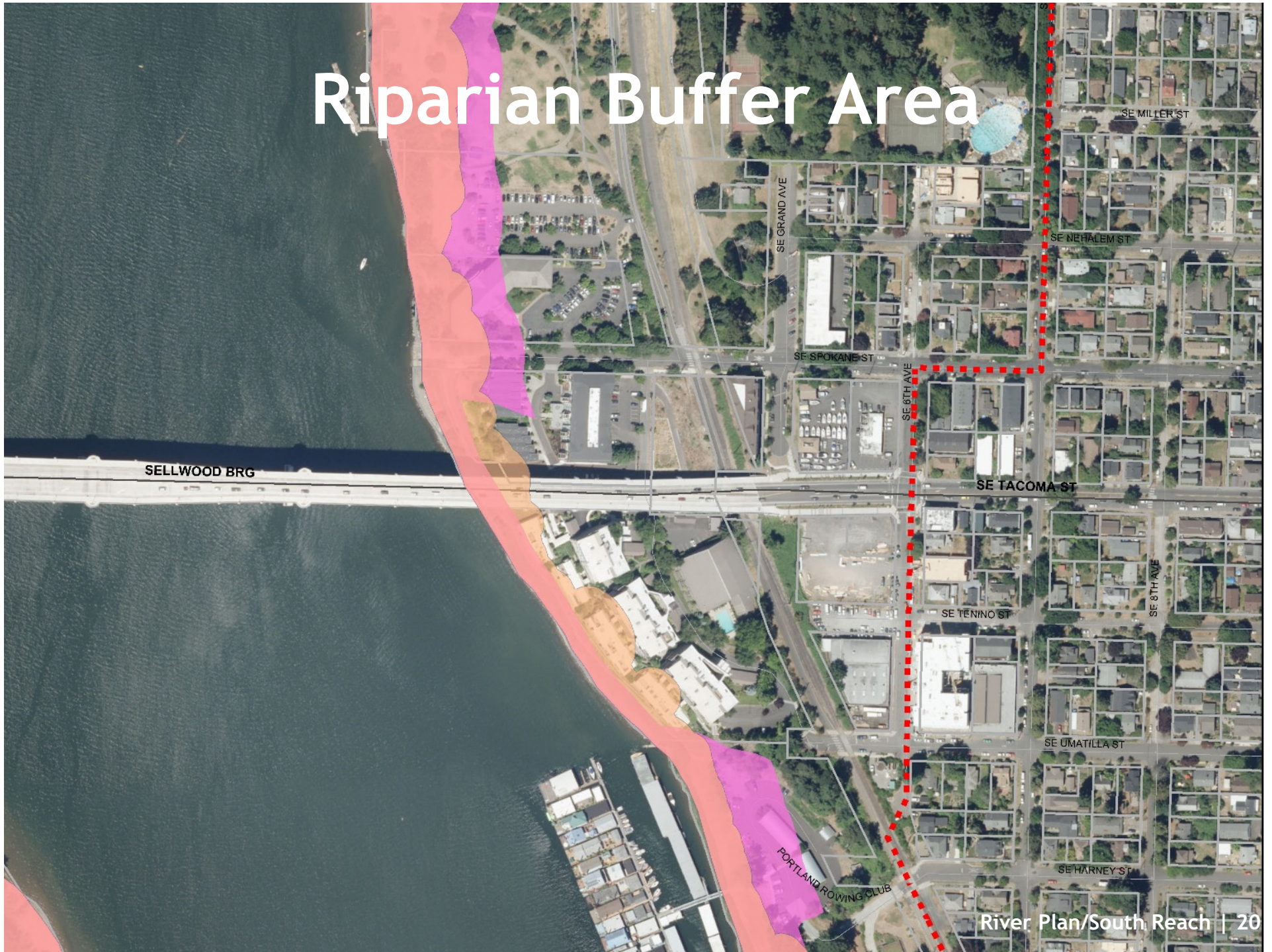


Floodplain Management

- Apply River Environmental to all floodplains
- Increase replacement ratios for 6-12 inch trees
- Mitigate floodplain impacts in the floodplain
- Allow future use of mitigation banks
- Establish a new Riparian Buffer Area



Riparian Buffer Area



RECREATION





Recreation Objectives

- Make physical and programmatic improvements
- Increase riverfront access
- Resolve conflicts between recreational users and impacts on natural resources
- Protect designated public views
- Pursue partnerships



Recreation (on-land)

- Willamette Park plan implementation
- Ross Island/Oaks Bottom Complex Management Plan
- Brooklyn riverfront access and park
- Trail improvements and extension to Lake Oswego
- Limited commercial at 3 parks



Recreation (in-river)

- Facility upgrades and new facilities
- Partnerships to address boating conflicts
- A public swimming beaches study



Scenic Resources

- Scenic resources inventoried and evaluated
- Viewpoints and view streets added and retired
- Amenities required with development at select viewpoints
- Trees prohibited in view corridors from viewpoints







TRIBAL ENGAGEMENT AND COLLABORATION





Photo courtesy of Laura Campos

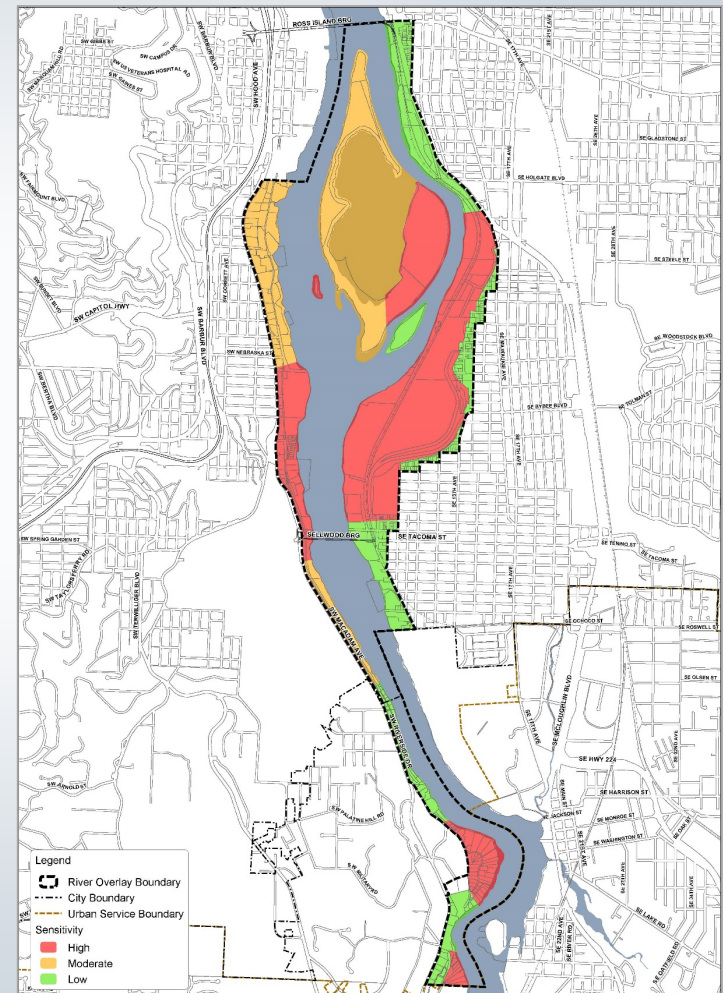
Collaboration Objectives

- Engage in government-to-government relations
- Further acknowledge tribal nations in Comprehensive Plan
- Expand programs and projects that support customs, traditions and culture



Archaeological Resources Protection

- High probability areas
- Survey of disturbance area
- SHPO and interested tribes engaged, if resources found
- Information shared on Inadvertent Discovery Plans



RIVERFRONT COMMUNITIES





Riverfront Communities Objectives

- Expand access to/along riverfront
- Improve transportation facilities and services
- Enhance riverfront development and design
- Coordinate to address houselessness



Riverfront Access

Improve local access to and along riverfront trails and river

- Brooklyn connection
- Trail gaps and extensions
- Boating and swimming



Transportation

Transit

- Bus services enhanced
- Streetcar extension to Lake Oswego

Active

- Pedestrian and bicycle projects (e.g., SE Tacoma Main Street, trail to Lake Oswego)

Multimodal

- Safety and parking conflicts resolved near Sellwood Riverfront Park



Development and Design

- DOZA
 - River Pattern Area in citywide guidelines
 - Design Standard amendments for river
- River Plan/South Reach
 - Repeal Macadam District Special Design Guidelines (1985)
 - Apply new Macadam Character Statement with citywide design guidelines



Macadam Character Statement

- Community character
- Architectural character
- Natural resources
- Scenic resources



Houseless Community

- Regional humanitarian issue
- Riverfront campers and live aboard boaters
- Support coordination with the Joint Office of Homeless Services



SOUTH REACH AMENDMENTS TO CENTRAL CITY 2035





Minor Updates

- **River General and River Environmental**

- Streamlined landscaping standard
- Tree removal exemptions
- Tree replacement ratios (6-12” diameter)
- Seawall reinforcement

- **Scenic Resources**

- Central City viewpoints included in Map 480-1
- Scenic overlay extended to connect to Map 480-1 viewpoints



FLOODPLAINS BEYOND THE SOUTH REACH





Portland Archives, A2004-002.111400

Introduction

- Why start with the South Reach?
- Flooding in Portland
- Background
- Intro to Floodplain Management Update Program



Photo: John Killen - The Oregonian



FEMA National Flood Insurance Program

- FEMA's Flood Insurance Program
- Portland's participation
- Community Rating System discounts
- Legal challenge



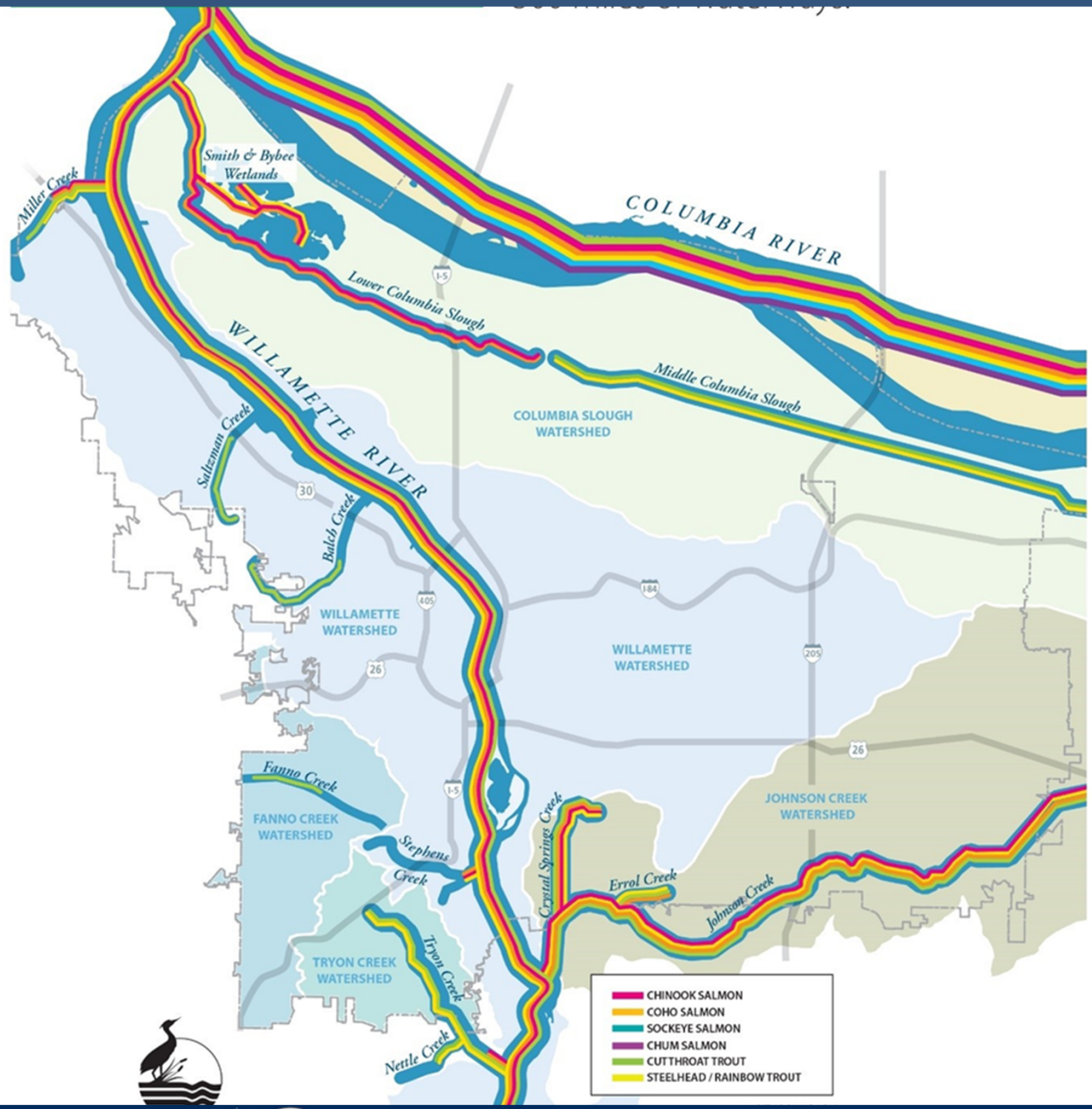
Photo: The Oregonian



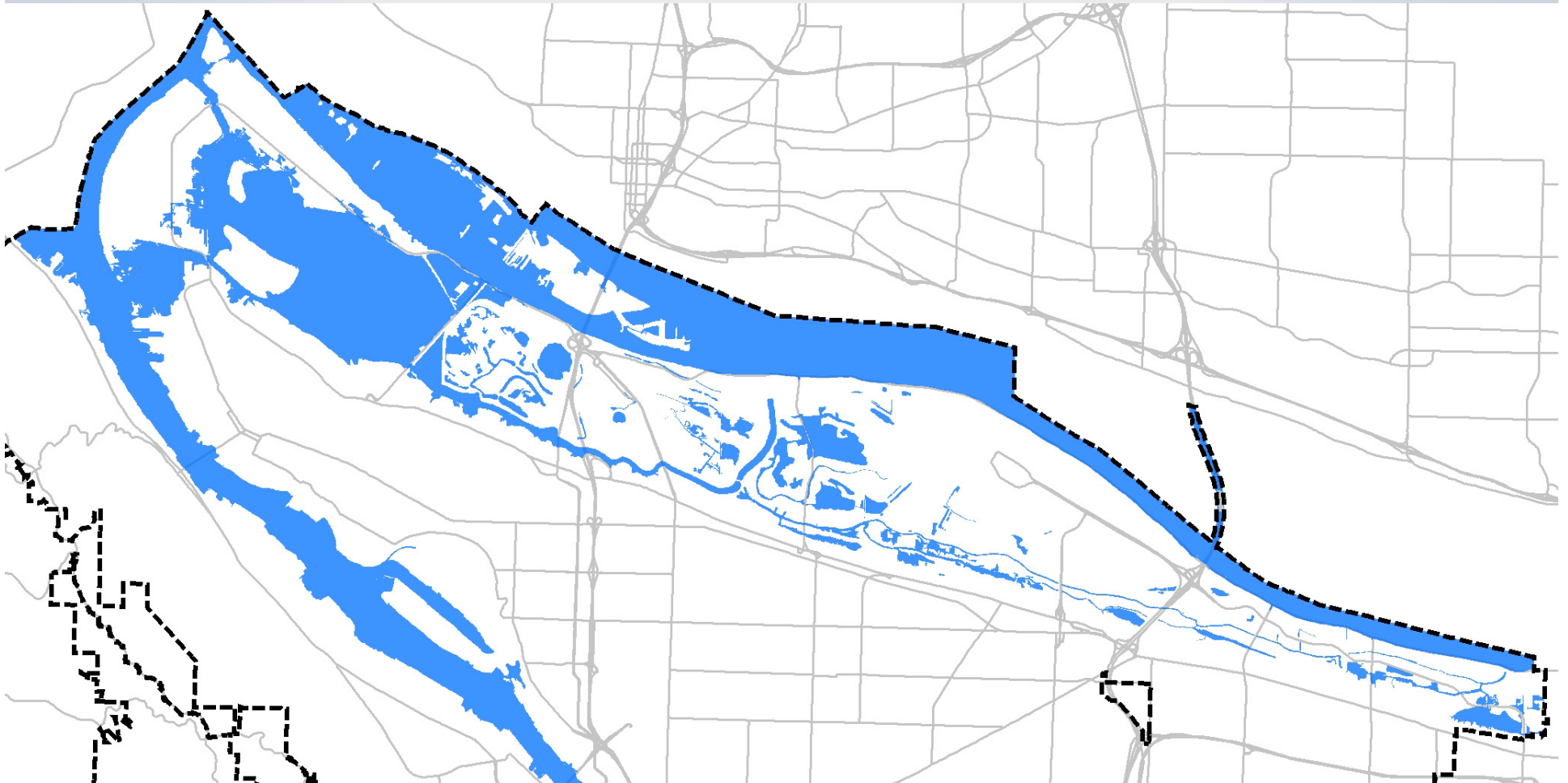
Biological Opinion

- Floodplain development harms salmon and steelhead and their critical habitat.
- City has land use authority.
- City currently at legal risk from third parties.
- Biological Opinion includes recommendations

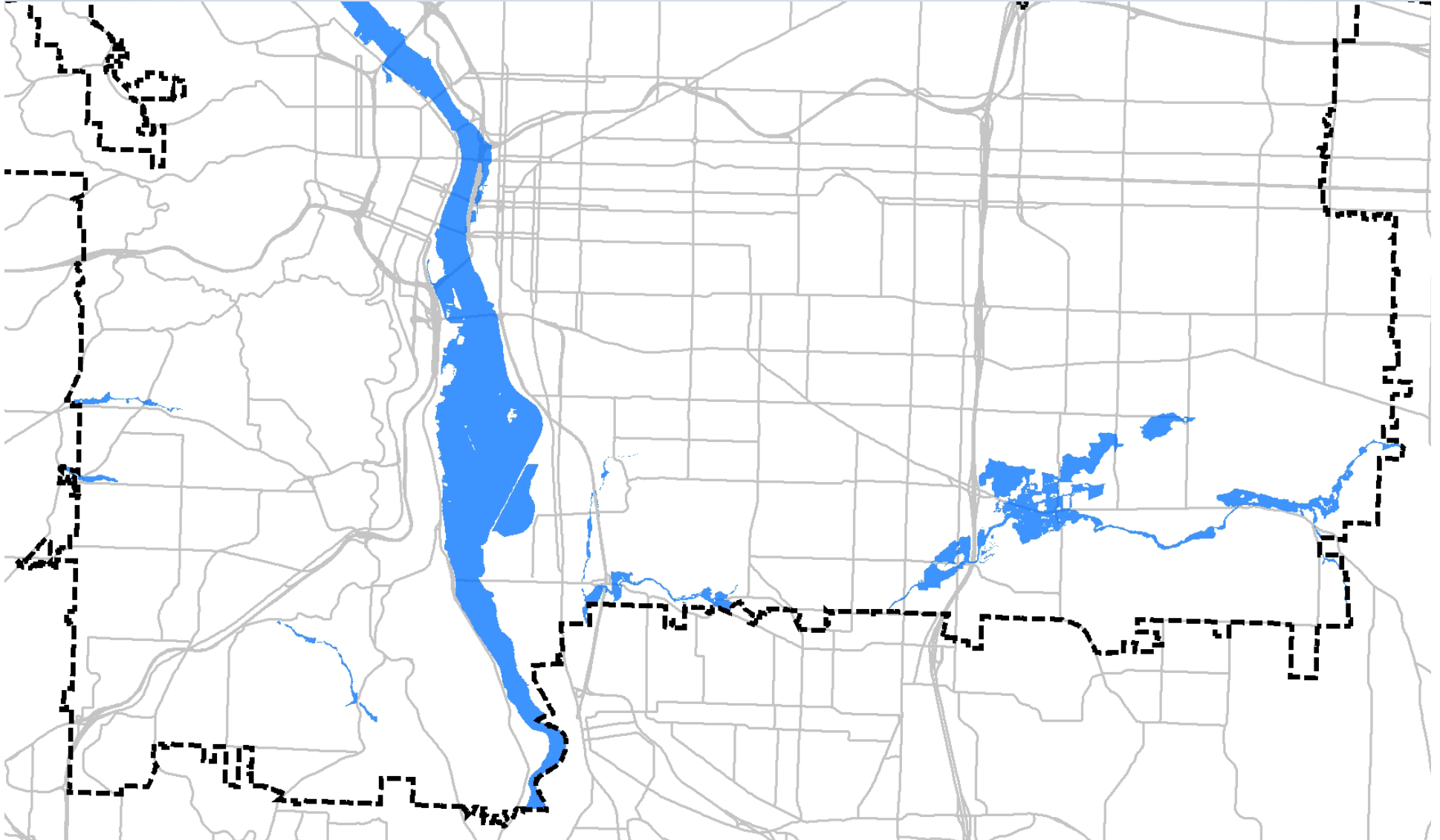




Portland's Floodplains



Portland's Floodplains



Flood Management Update

- Develop regulations to maintain functioning floodplains.
- Create and fund a plan to restore floodplains.
- Explore mitigation banking within the City.



Regulatory Changes

River Plan/South Reach

- Title 33 Changes (33.475 and 33.865)
 - Increased tree replacement ratios
 - Mapped Riparian Buffer Area (RBA)
 - Limitations and additional mitigation requirements
 - Allowances for mitigation banking
 - Additional permit/land use submittal requirements



Regulatory Changes

Floodplain-Focused Project (Discussion Draft, Summer 2020)

- Title 24.50, Flood Hazards (Building Code)
 - Modified cut/fill ratios
 - Increased clarity and flexibility for compensatory cut
 - Mapped High Hazard Area (HHA)
 - Mapped full extent of 1996 flooding
- Title 33
 - Increased tree replacement ratios
 - Mitigation for functional value replacement
 - Mapped Riparian Buffer Area in the Central Reach
 - Limitations on land divisions and new impervious surfaces



Regulatory Changes

Projects to include additional floodplain regulations

- Johnson Creek Plan District
- River Plan/North Reach
- Columbia Corridor
- South Waterfront Subdistrict

Anticipated: 2022-2024



SOUTH REACH NEXT STEPS



Next Steps

- PSC public hearing - 2/25
- PSC Worksessions - 3/10 and 4/14 (with decision)
- Design Commission public hearing - spring, TBD
- City Council public hearing - summer, TBD

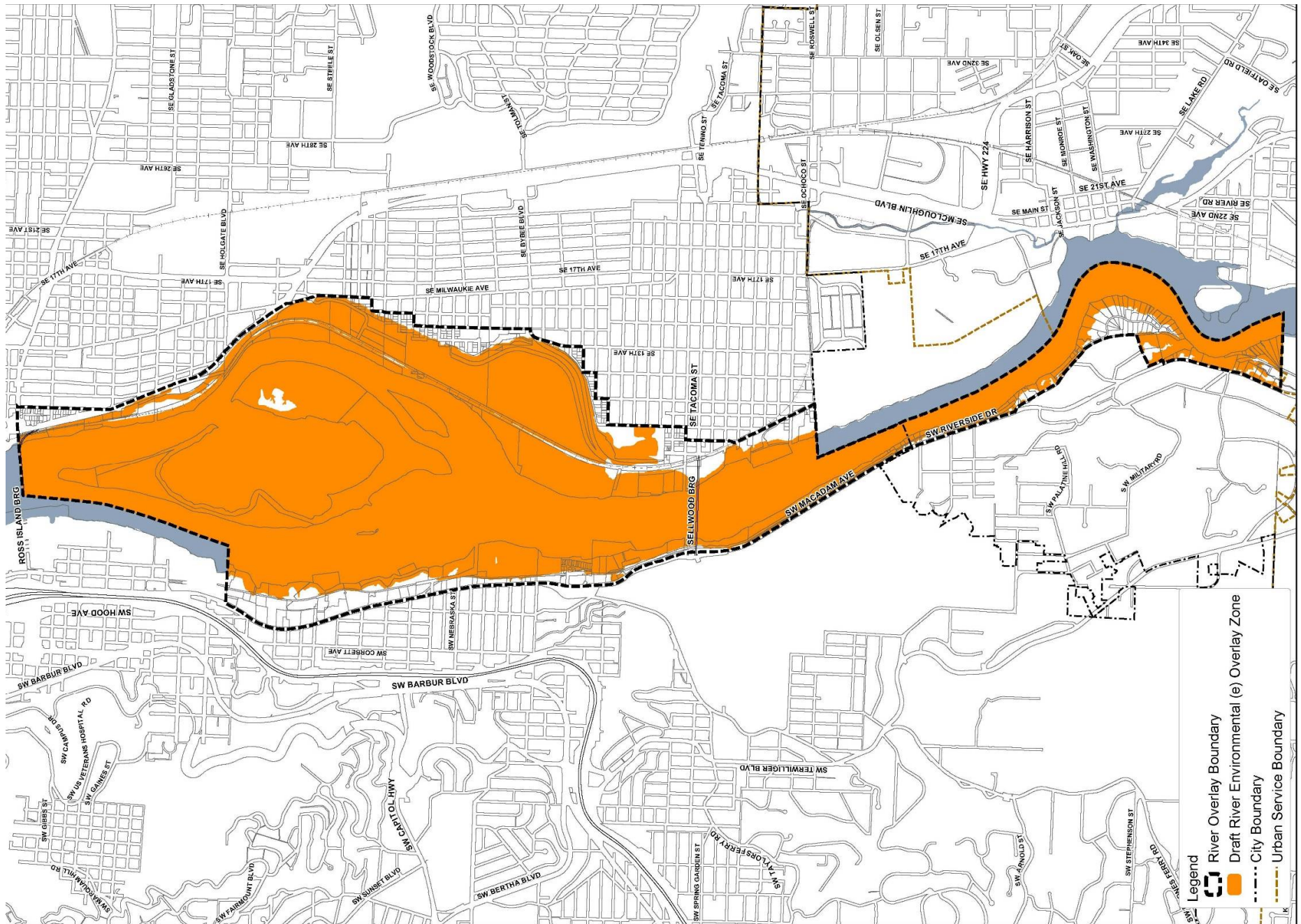


**Questions, Comments?
Thank you!**



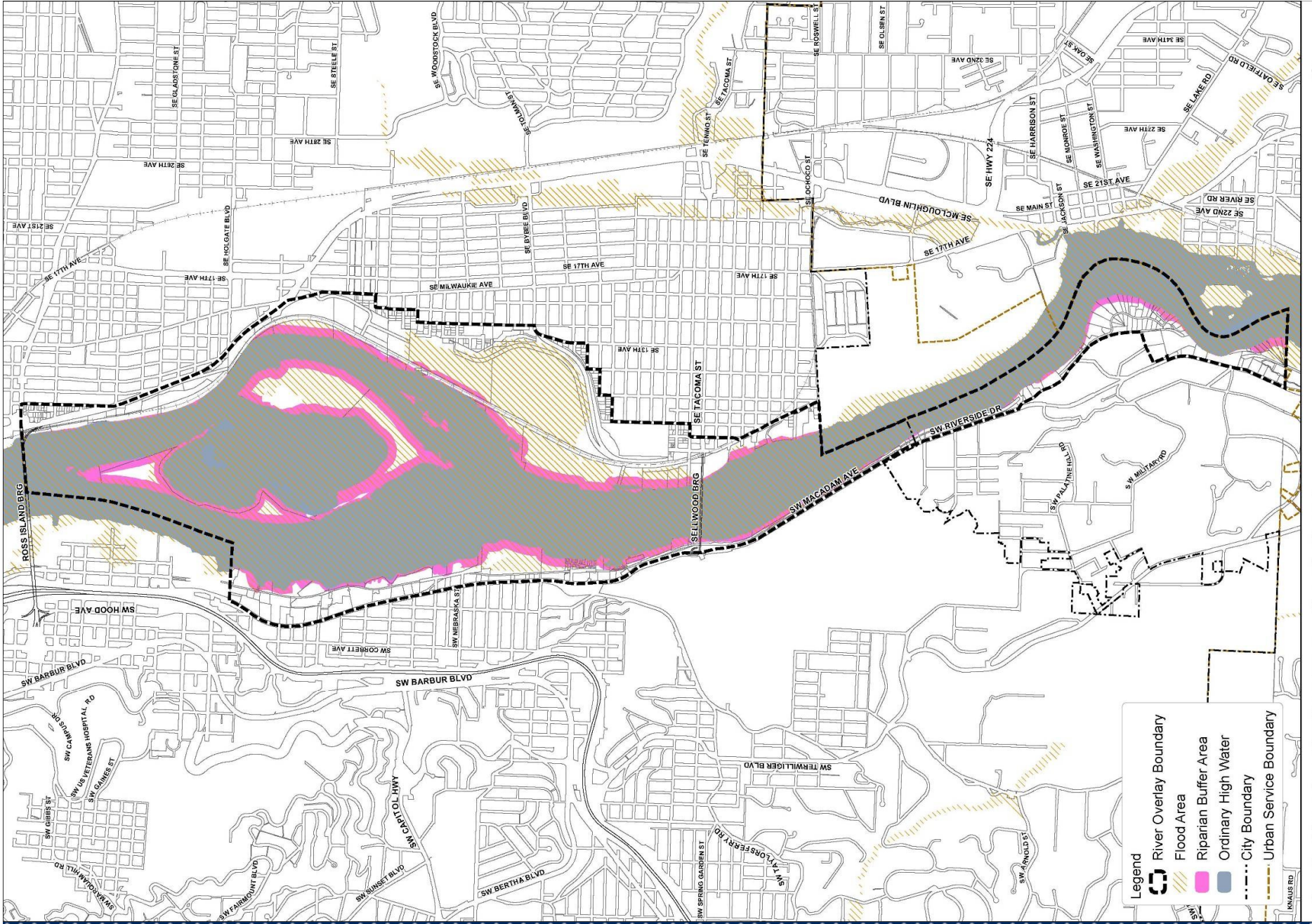
Bureau of Planning and Sustainability
Innovation. Collaboration. Practical Solutions.





Draft River Environmental Overlay Zone - South Reach ▲

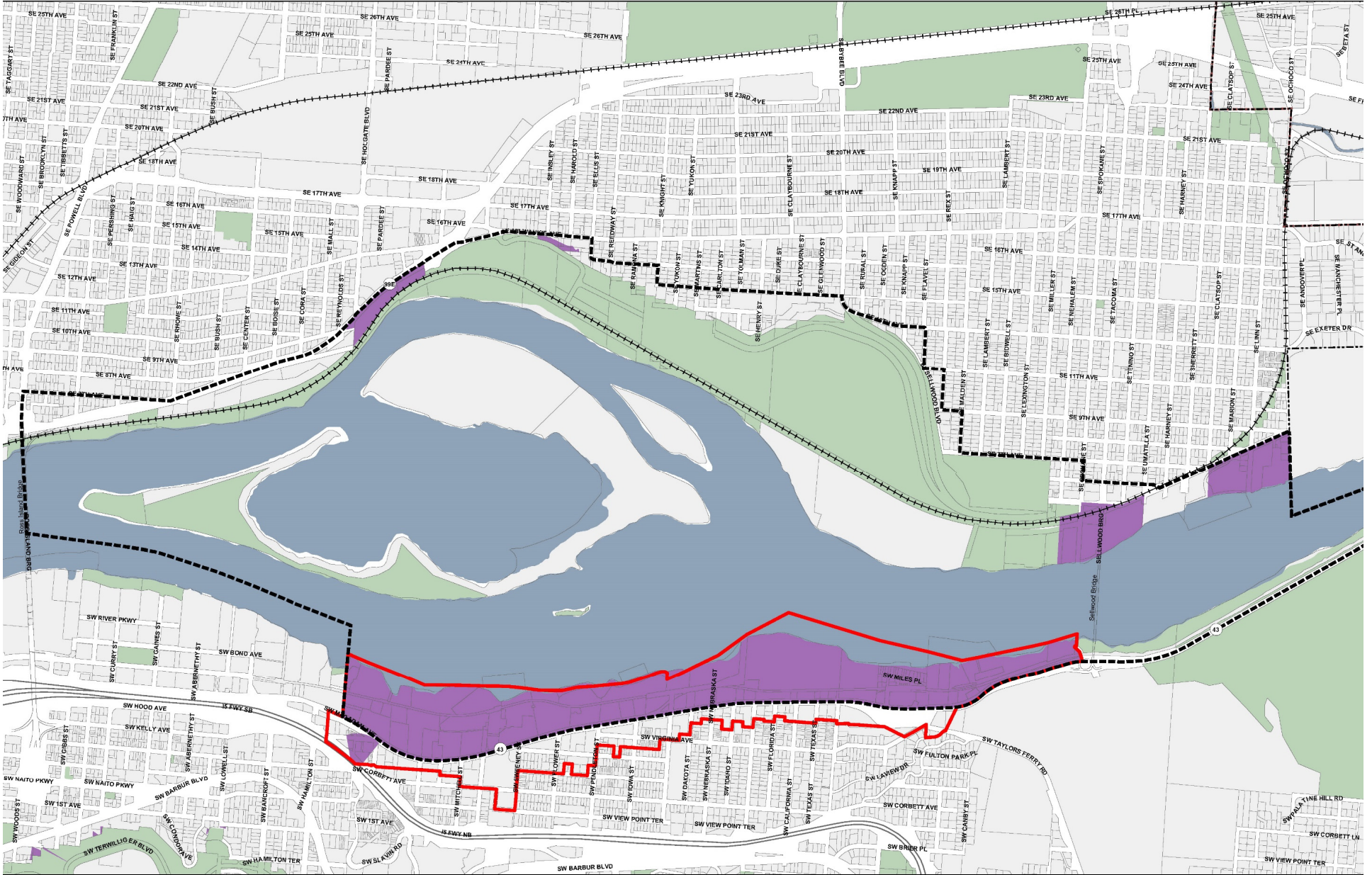




Draft Riparian Buffer Area - South Reach



River Plan South Reach






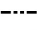


Design Overlay

November 1, 2019

City of Portland, Oregon // Bureau of Planning & Sustainability // Geographic Information System

The information on this map was derived from City of Portland GIS databases. Care was taken in the creation of this map but it is provided "as is". The City of Portland cannot accept any responsibility for error, omissions or positional accuracy.

© 2019 Oregon State University. All rights reserved. Oregon State University. All rights reserved. Oregon State University. All rights reserved.

-  River Plan South Reach boundary
-  Macadam Plan District
-  Design (d) overlay
-  City Boundary
-  Urban Service Boundary
-  Parks

