

**EXHIBIT A**  
**FIGURE 6 - Chapter 17.102**  
(Replaced by Ordinance No. \_\_\_\_\_)  
effective February 1, 2020.)

**Residential Solid Waste and Recycling Rates**

**As used in Figure 6 the following terms have the meanings described below:**

"Excess distance" is applicable to any collection beyond seventy-five (75) feet from the curb. This charge is in addition to the "non-curb surcharge."

"Clean up containers" include hauler-provided containers which are provided as requested by the customer for occasional or temporary use.

"Small multiplex" refers to any multidwelling building or a combination of buildings on a single tax lot in the residential franchise territory that contains 2-4 dwelling units.

"Non-curb surcharge" is the charge for collection service provided at a location more distant than curbside.

"Terrain differential" is applicable to services within the territory designated on Figure 6-1.

<b>Residential Curbside Collection Service Rates and Charges</b>				
<b>Single Family Service Level</b>	<b>Monthly Rate Curbside Pickup</b>	<b>Per Unit or Per Pickup</b>	<b>Non-Curb Surcharge</b>	<b>Excess Distance</b>
<b>Standard Service - Service includes weekly collection of composting &amp; recycling, every-other-week garbage</b>				
20-gallon Can*	27.55		2.10	0.70
32-gallon Can*	32.15		2.10	0.70
20-gallon Rollcart	27.55			
35-gallon Rollcart	32.15			
60-gallon Rollcart	37.35			
90-gallon Rollcart	42.60			
1.0 Cubic Yard Container	87.30			
1.5 Cubic Yard Container	118.70			
2.0 Cubic Yard Container	150.05			
<b>Every-four-weeks Service - Service includes weekly collection of composting &amp; recycling, every-four-weeks garbage</b>				
32-gallon Can*	24.65		1.05	0.35
35-gallon Rollcart	24.65			

\*Customer-provided garbage cans are being phased out and these service levels are generally not available. Customers currently providing their own garbage cans are grandfathered in.

Single Family Service Level	Monthly Rate Curbside Pickup	Per Unit or Per Pickup	Non-Curb Surcharge	Excess Distance
<b>Special Services</b>				
Recycling Only, Weekly Collection	11.25			
Composting & Recycling Only, Weekly Collection	20.80			
On Call Yard Debris Collection (32 gallon Can, Bag, or Bundle--Yard Debris Only)		7.35		
On Call Garbage (32-Gallon Can or Bag)		9.80	1.05	0.35
Yard Debris, Extra Can, Bag or Bundle -- Yard Debris Only		3.75		
Garbage, Extra Can or Bag		5.00	1.05	0.35
Courtesy Callback (Garbage or Composting)		9.70		
Rollcart Delivery**		13.75		
Extra Composting Rollcart	13.90			
Extra Recycling Rollcart	5.90			
Holiday Tree Removal		5.00		
<b>Multiple Cans / Rollcarts -- Service includes weekly collection of composting &amp; recycling, every-other-week garbage</b>				
32-Gallon Cans, Two*	41.85		4.20	1.40
32-Gallon Cans, Three*	47.90		6.30	2.10
32-Gallon Cans, Four*	52.40		8.40	2.80
35-Gallon Rollcart, Two	41.10			
35-Gallon Rollcart, Three	48.55			
35-Gallon Rollcart, Four	56.00			
60-Gallon Rollcart, Two	48.10			
60-Gallon Rollcart, Three	58.30			
60-Gallon Rollcart, Four	68.45			
90-Gallon Rollcart, Two	56.20			
90-Gallon Rollcart, Three	68.05			
90-Gallon Rollcart, Four	79.85			

\*Customer-provided garbage cans are being phased out and these service levels are generally not available. Customers currently providing their own garbage cans are grandfathered in.

\*\*Rollcart delivery fees may be charged in the following scenarios:

1. For composting and recycling, if it is the customer's second (or greater) rollcart delivery.
2. For garbage, if it is the customer's second (or greater) rollcart delivery within a one year period.
3. Any time the customer requests a clean rollcart.

Service Level	Monthly Rate Curbside Pickup	Per Unit or Per Pickup	Non-Curb Surcharge	Excess Distance
<b>Clean-Up Containers</b>				
One 1.0 Cubic Yard		92.25		
One 1.5 Cubic Yard		100.85		
One 2.0 Cubic Yard		109.35		
<b>Terrain Differential</b>				
Every-Other-Week Garbage (Single Can / Rollcart)	4.30			
Every-Other-Week Garbage (Multiple Cans / Rollcarts)	4.45			
Every-Four-Weeks Garbage	3.00			
Recycling Only	1.50			
Compost & Recycling Only	2.85			
32-Gallon Can On-Call	0.75			
On Call Yard Debris Collection (32 gallon Can, Bag, or Bundle -- Yard Debris Only)	0.30			

## Curbside Collection Service Rates and Charges for Small Multiplexes

Weekly composting & recycling, every-other-week garbage			
Collection for:	Duplex	Tri-Plex	Four-Plex
<b>Single Container Service, where rollcart / container is shared by residents of 2, 3 or 4 units</b>			
One shared 60-Gallon Rollcart	43.80	52.60	N / A
One shared 90-Gallon Rollcart	47.30	56.05	64.85
One shared 1.0 Cubic Yard Container	73.15	81.90	90.70
One shared 1.5 Cubic Yard Container	90.80	99.55	108.35
One shared 2.0 Cubic Yard Container	108.40	117.15	125.90
<b>Multiple Containers, where all cans / rollcarts are placed together in a single location at curbside for pickup. Where unshared cans / rollcarts are located separately at curbside for pickup then each is considered a separate account, charged at single-family rate.</b>			
Two 32-Gallon Cans*	44.40	53.15	N / A
Three 32-Gallon Cans*	48.60	57.40	66.15
Four 32-Gallon Cans*	52.85	61.60	70.35
Two 20-Gallon Rollcarts	42.25	N / A	N / A
Three 20-Gallon Rollcarts	45.45	54.20	N / A
Four 20-Gallon Rollcarts	48.60	57.35	66.10
Two 35-Gallon Rollcarts	45.35	54.10	N / A
Three 35-Gallon Rollcarts	50.05	58.80	67.55
Four 35-Gallon Rollcarts	54.70	63.50	72.25
Two 60-Gallon Rollcarts	51.70	60.45	69.20
Three 60-Gallon Rollcarts	59.55	68.30	77.10
Four 60-Gallon Rollcarts	67.45	76.20	84.95
Two 90-Gallon Rollcarts	58.65	67.45	76.20
Three 90-Gallon Rollcarts	70.00	78.75	87.55
Four 90 Gallon Rollcarts	81.40	90.15	98.90

--N/A services are not available.

--Non-curbside service is available at small multiplexes for garbage cans and rollcarts at an additional monthly charge of \$2.10 per can and \$4.30 per rollcart. Excess distance charge for a can is \$0.70. Excess distance charge for a rollcart is \$1.40.

--For composting services, extra cans, bags, or bundles of yard debris only are \$3.75 each and accrue on a per account, rather than per unit, basis.

--Recycling labor surcharge is \$8.75 per additional dwelling unit.

\*Customer-provided garbage cans are being phased out and these service levels are generally not available. Customers currently providing their own garbage cans are grandfathered in.



## Westside Terrain Area

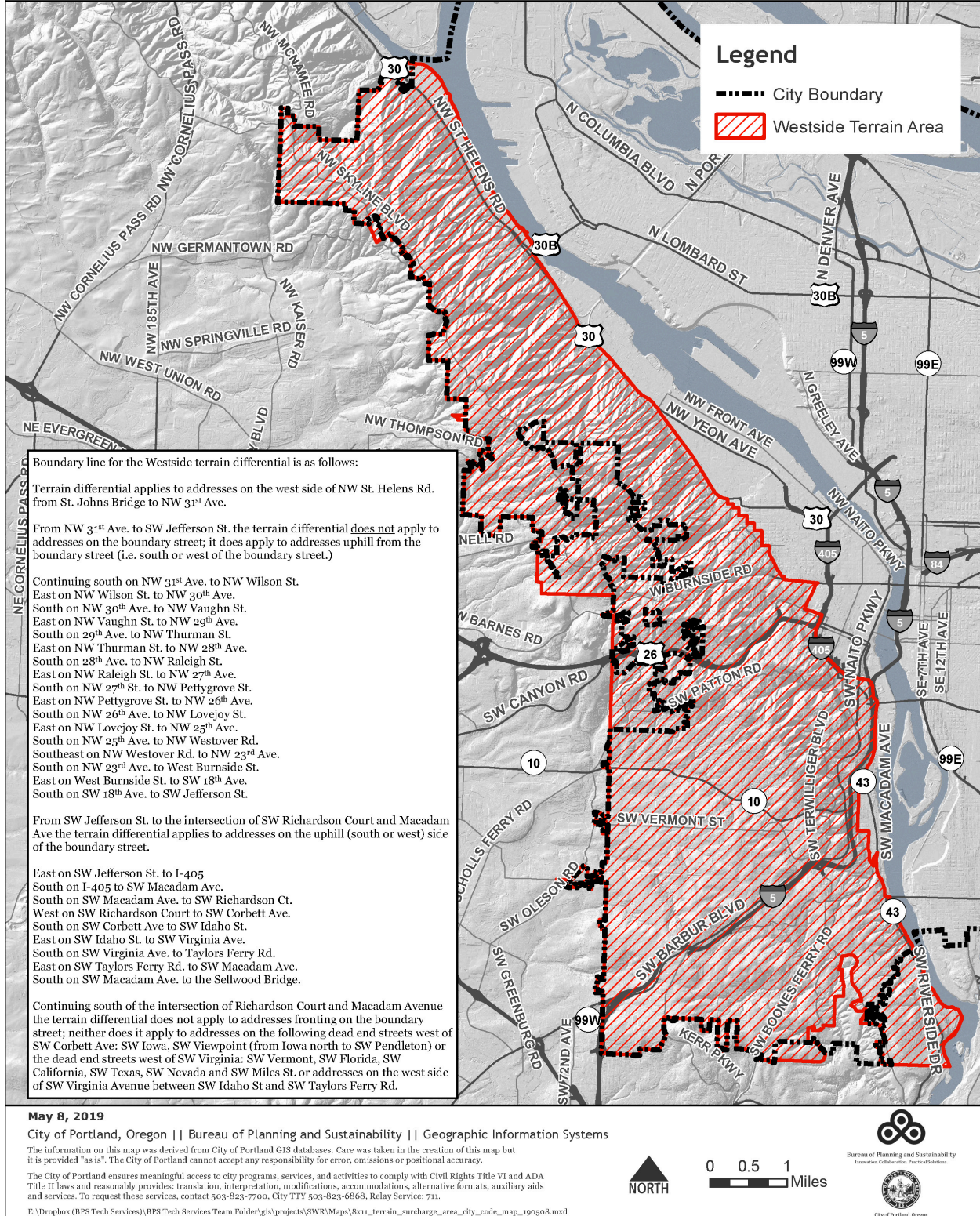


Figure 6-1 Terrain Differential Area Map