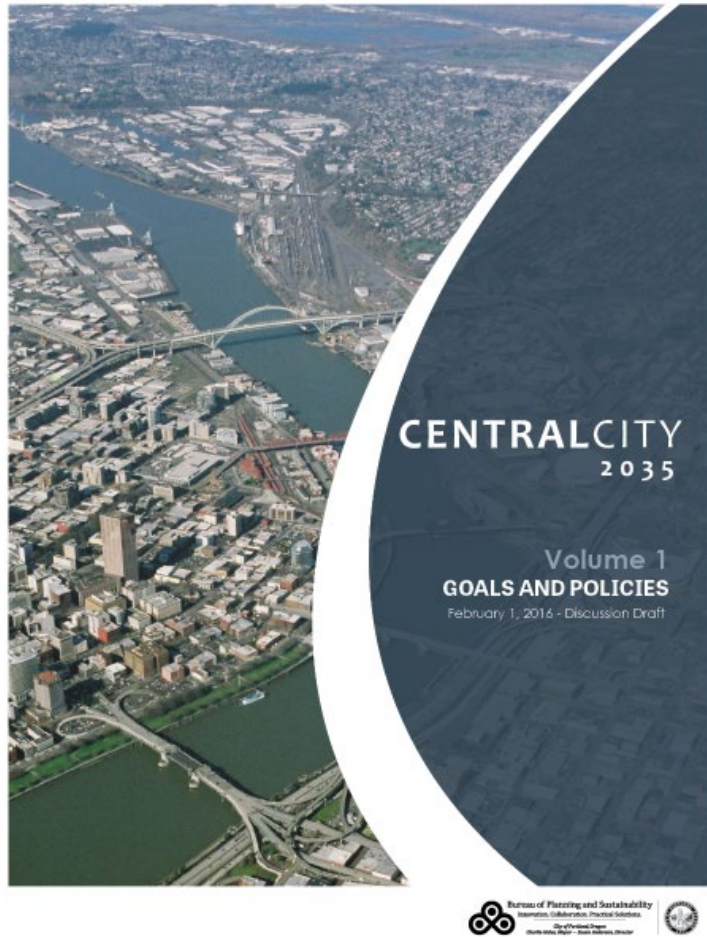


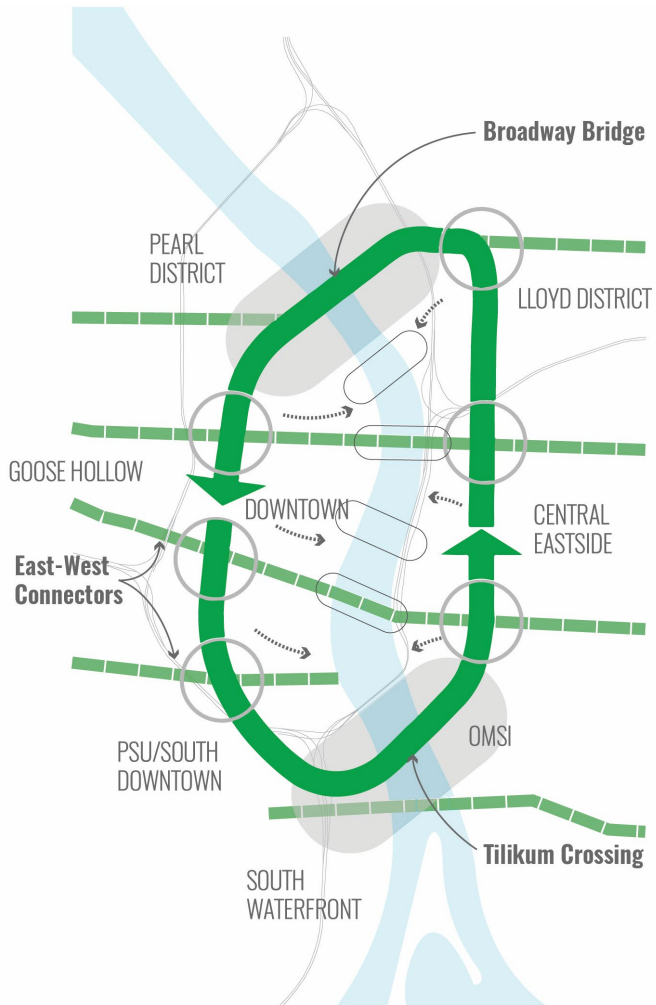


The Green Loop: A 21st Century Public Works Project



Adopted with Central City 2035 Plan

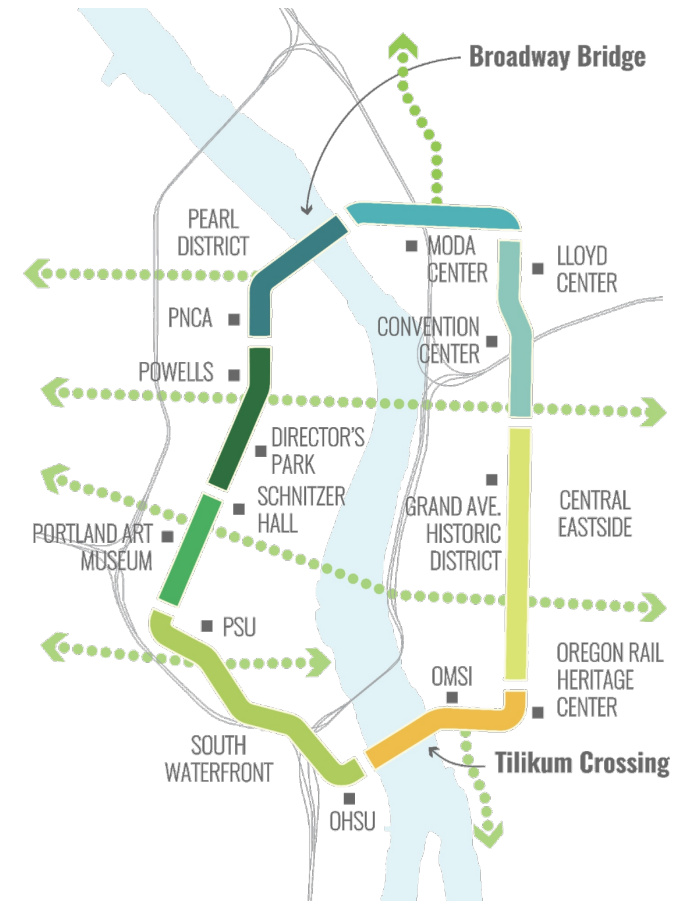
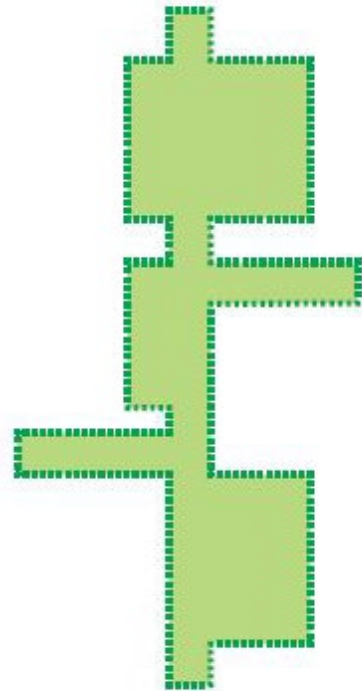




✗
Not the Green Loop



✓
Green Loop



The Green Loop is a six-mile linear park that invites residents, employees and visitors to experience Portland's Central City in an entirely new way.

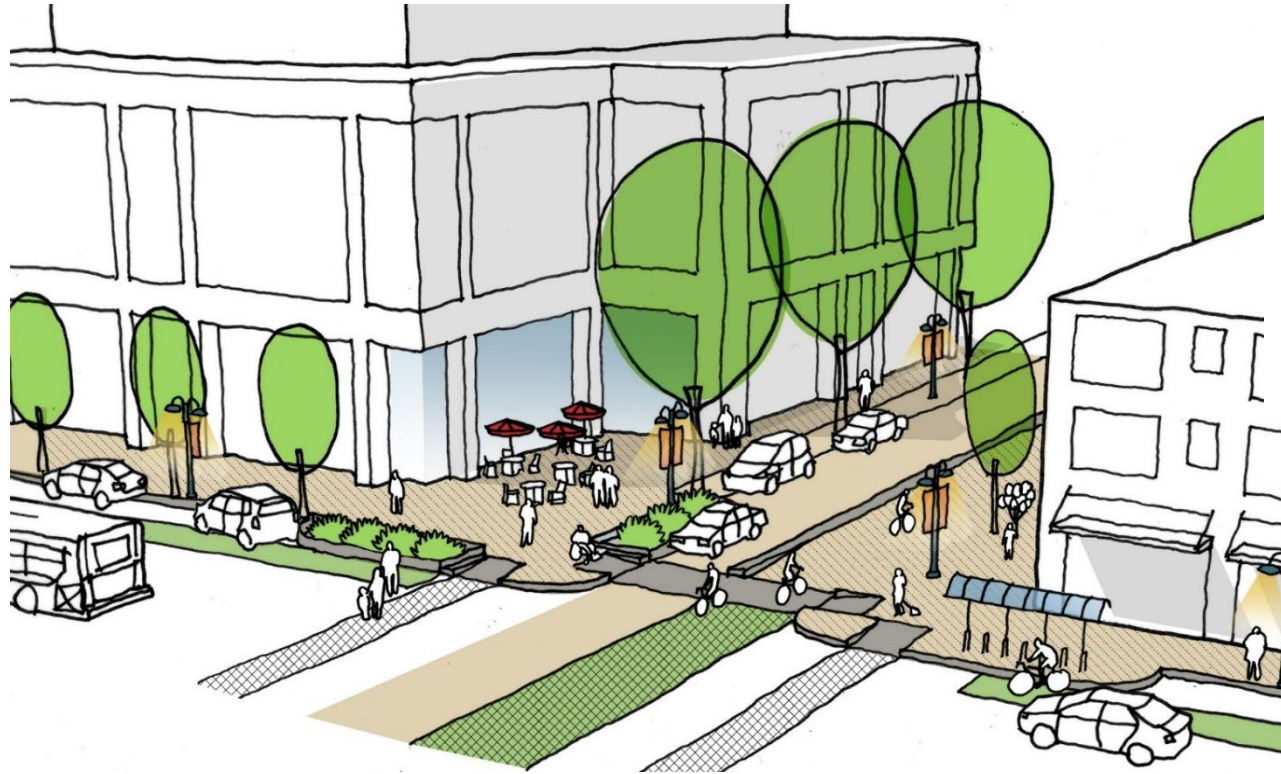
DESIGN PRINCIPLES



PHYSICAL SEPARATION



CONNECTED CANOPY



BRANDING/IDENTITY



CREATIVE FURNISHING DESIGN



WALKING, JOGGING,
BIKING



BUILDING ORIENTATION



Lloyd District

CONVENTION CENTER

🚲 4 MIN
🚶 8 MIN

OMSI

🚲 11 MIN
🚶 30 MIN

The Green Loop Community Involvement



OREGON Walkways

ON THE 'GREEN LOOP'

AUGUST 20th - 10:00am-4:00pm

The International Open Streets Summit is coming to the Park Blocks! A one-day pedestrian route along Park Ave – from NW Hoyt to SW Market – will allow people to walk between the North and South Park Blocks and be clear of parked cars or vehicle traffic. Increase foot traffic and build community, as envisioned by the Green Loop concept!

Get involved at
Volunteer.betterblockpdx@gmail.com

Partners:

Oregon Walkways 2016

YPT Scavenger Hunt 2016



Design Week Portland 2016

The Green Loop **Precedents**



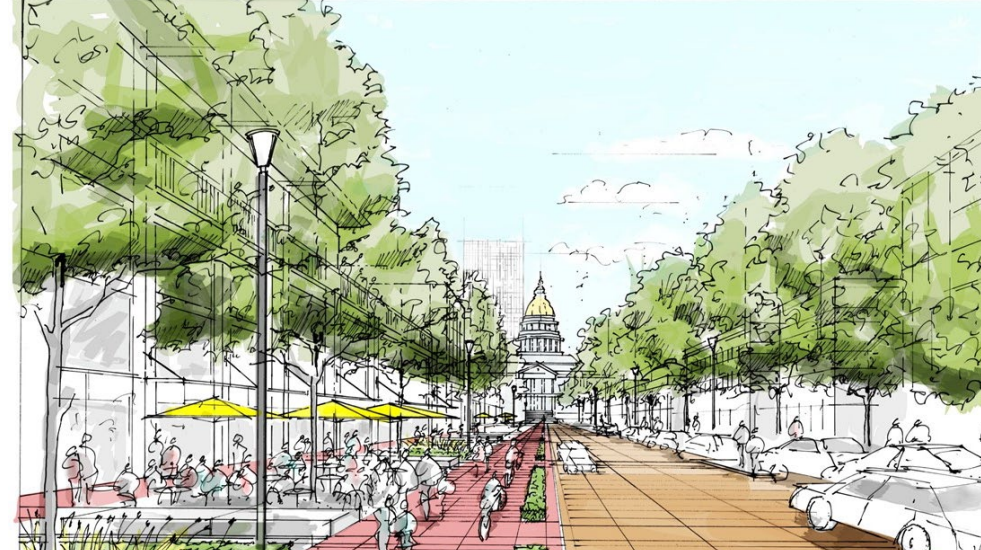
The Indianapolis Cultural Trail



The Atlanta Beltline

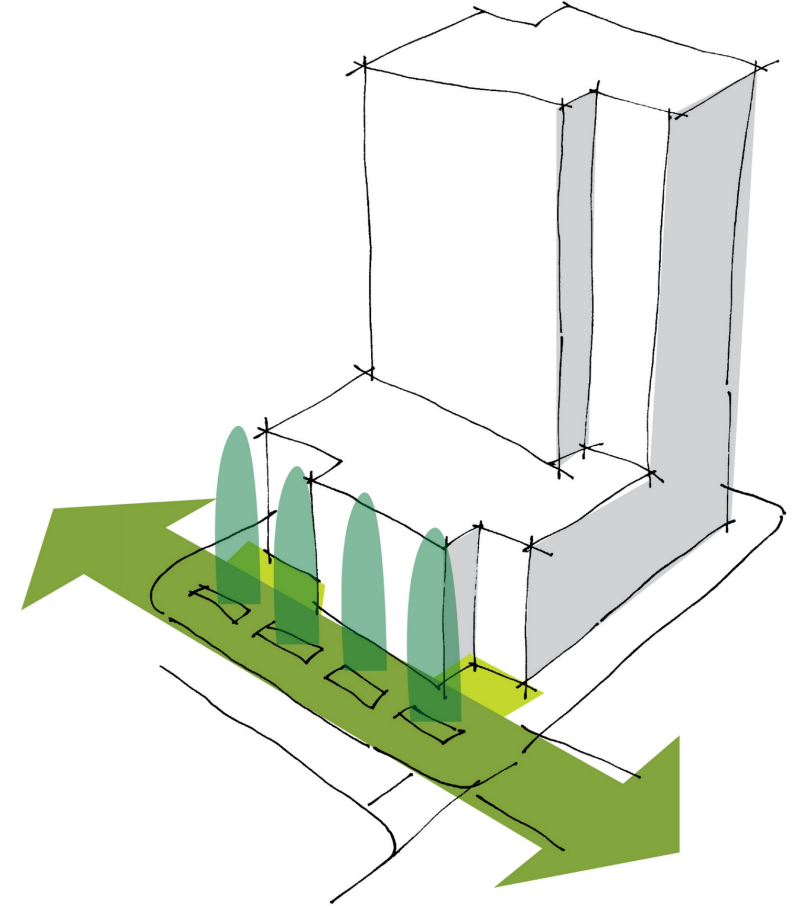
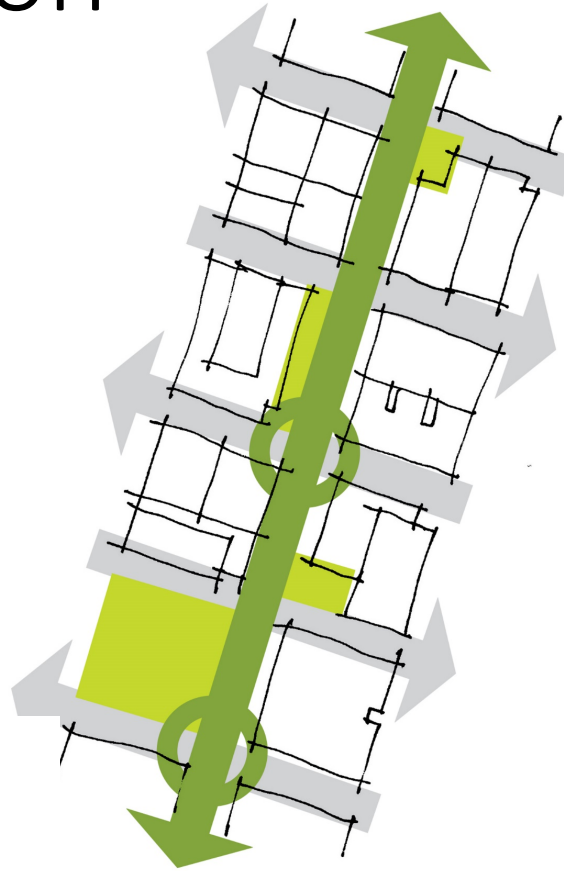
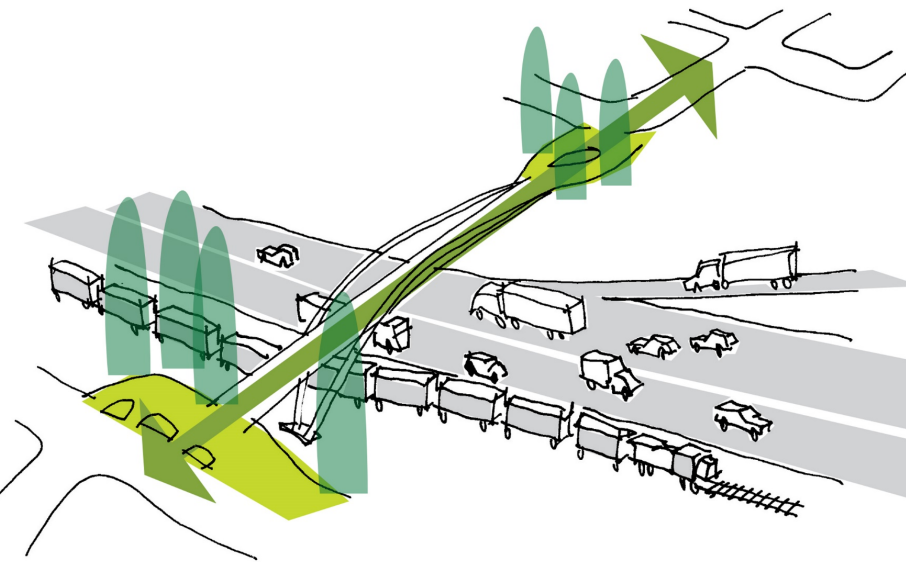


The Chicago Bloomingdale Trail – “The 606”



The Denver 5280 Loop

Loop Implementation



Public Infrastructure

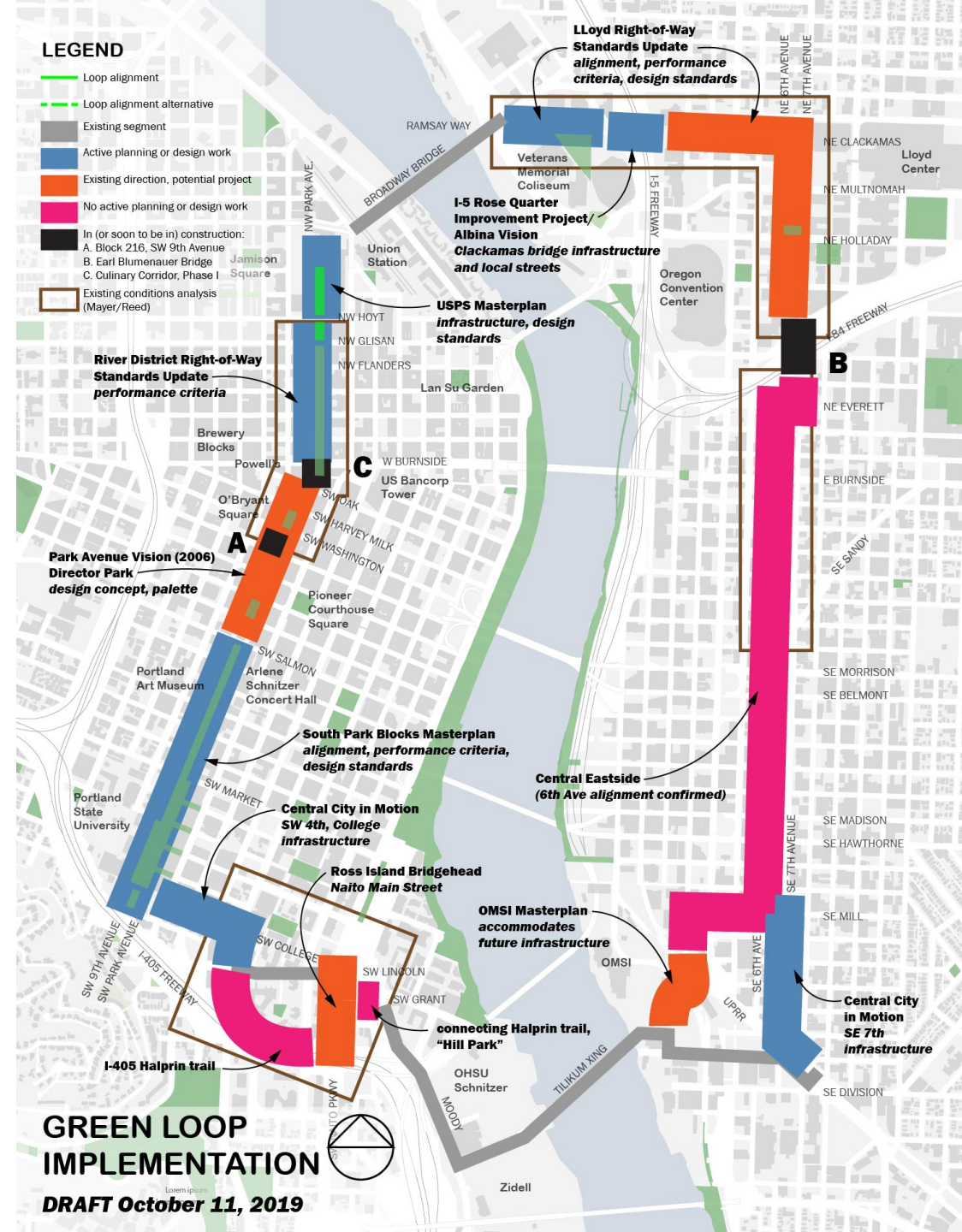
Development Regulations

Capital Improvements

Loop in Progress

LEGEND

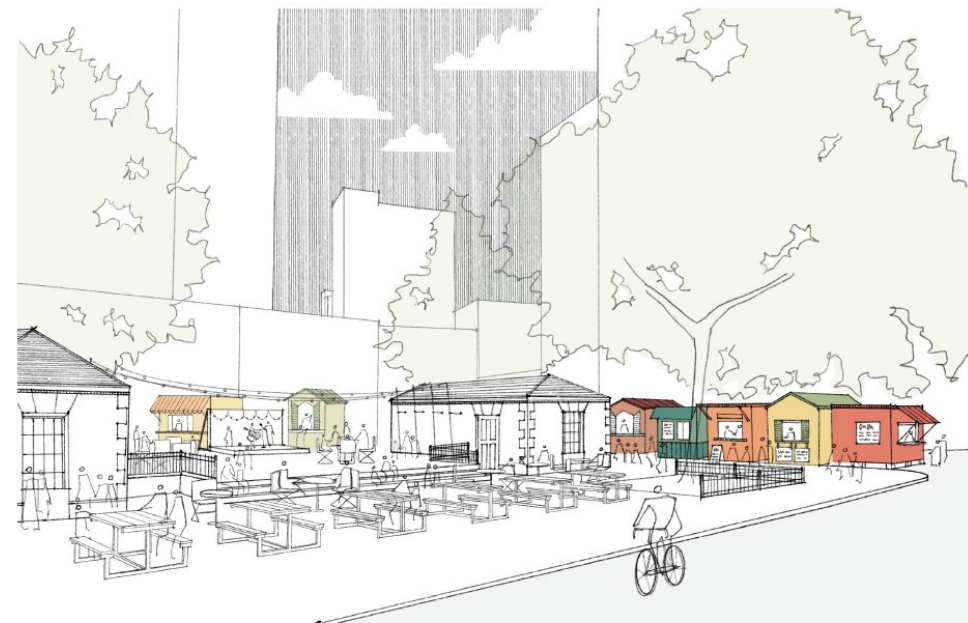
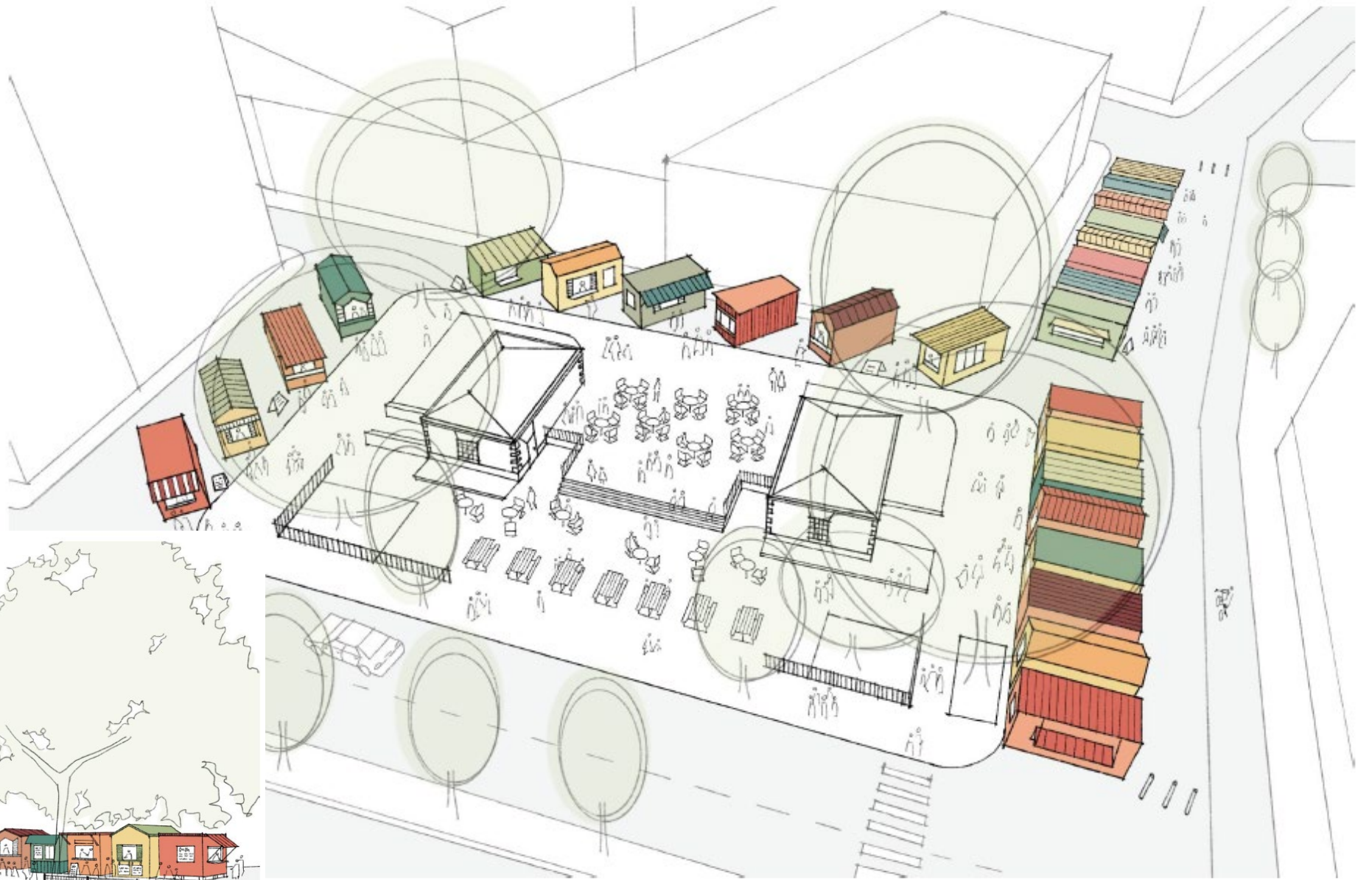
-  Loop alignment
-  Loop alignment alternative
-  Existing segment
-  Active planning or design work
-  Existing direction, potential project
-  No active planning or design work
-  In (or soon to be in) construction:
 - A. Block 216, SW 9th Avenue
 - B. Earl Blumenauer Bridge
 - C. Culinary Corridor, Phase I
-  Existing conditions analysis (Mayer/Reed)



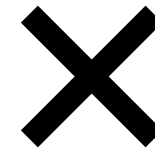
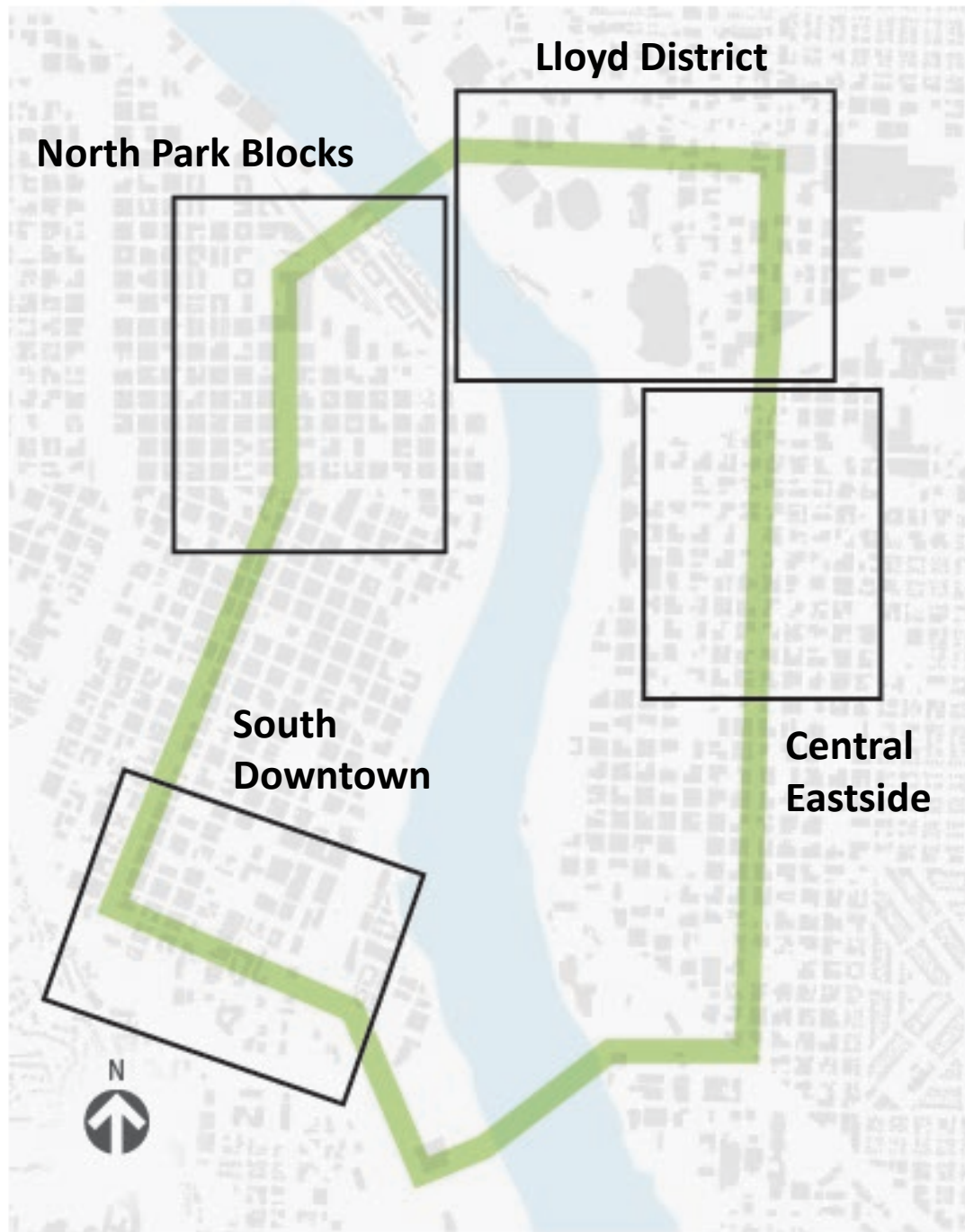




bridge at north landing



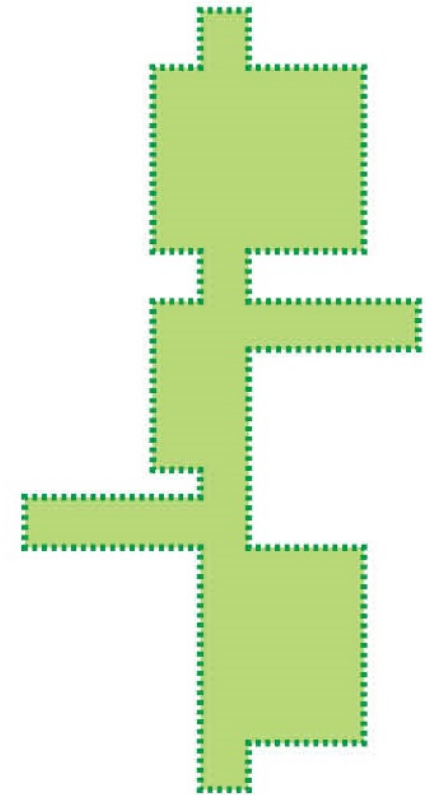
Ground Level View looking Southwest



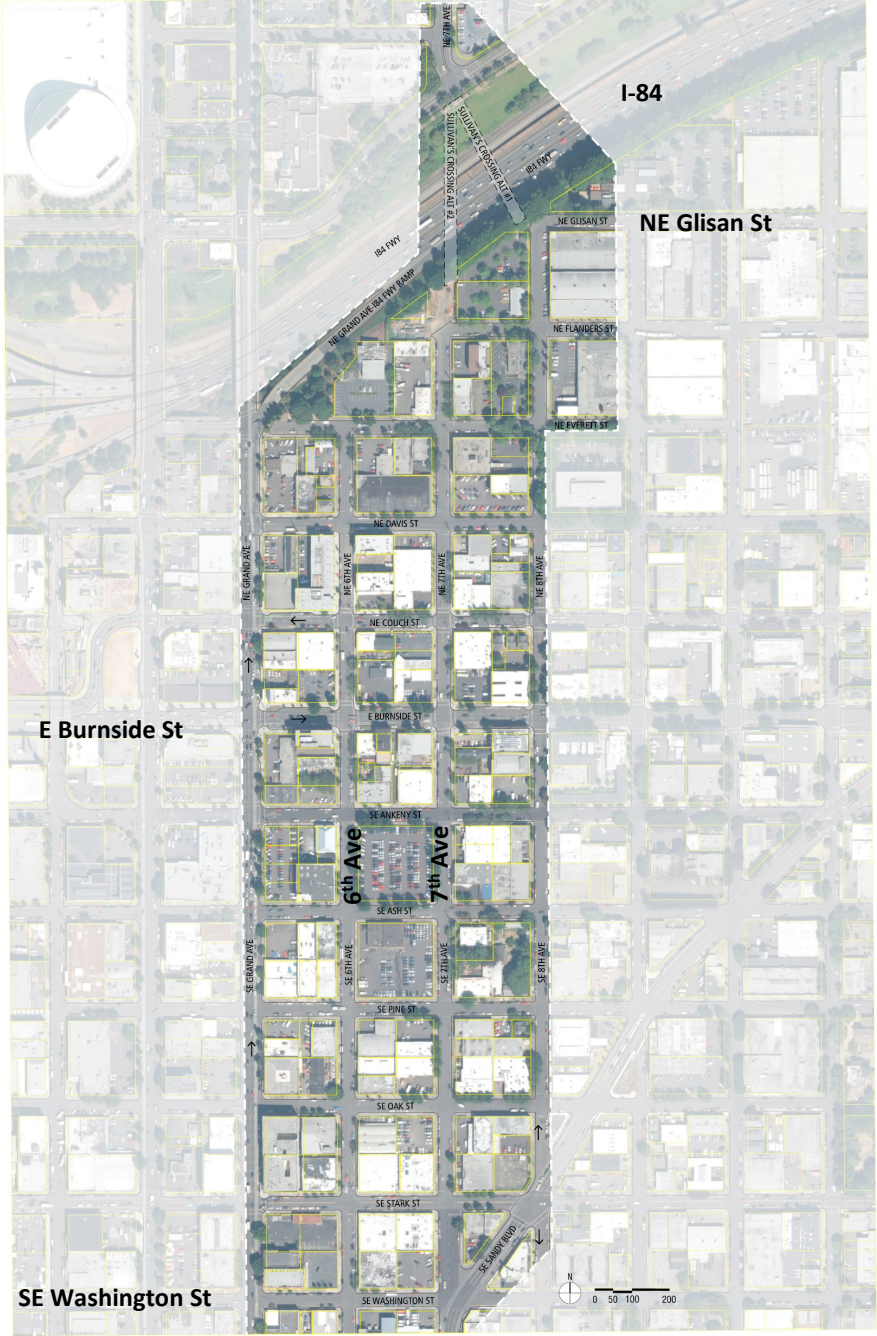
Not the Green Loop



Green Loop



Central Eastside Study Area

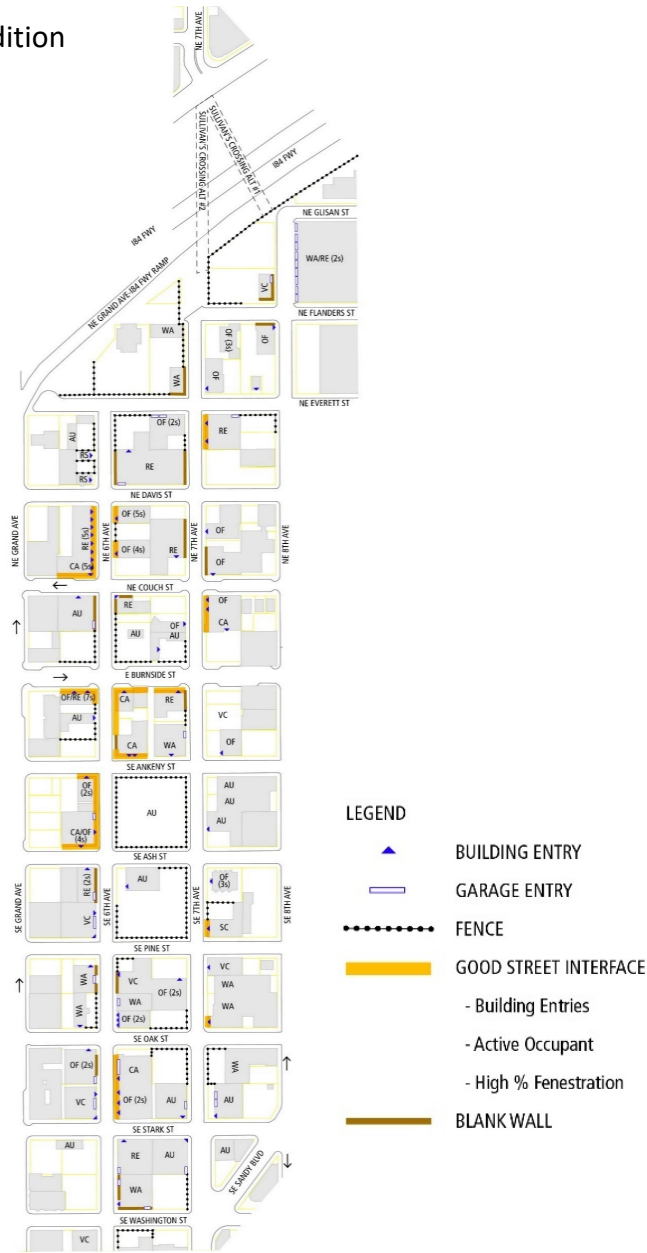


Central Eastside Existing Conditions

Street Condition



Building Condition



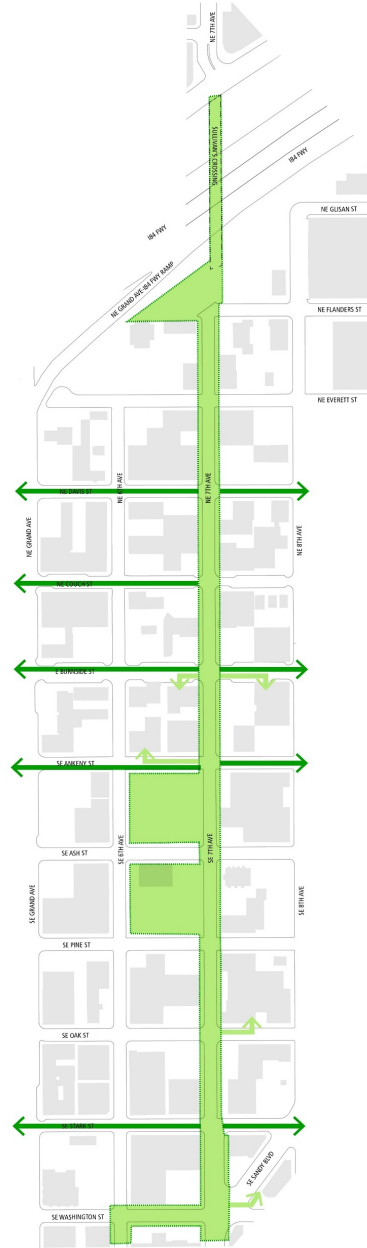
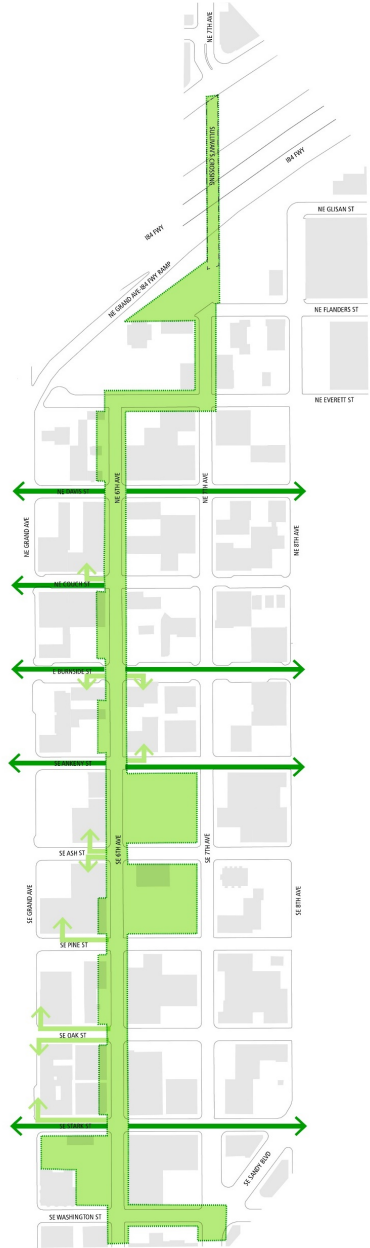
Land Use & Zoning



6th Ave

6th Ave

7th Ave



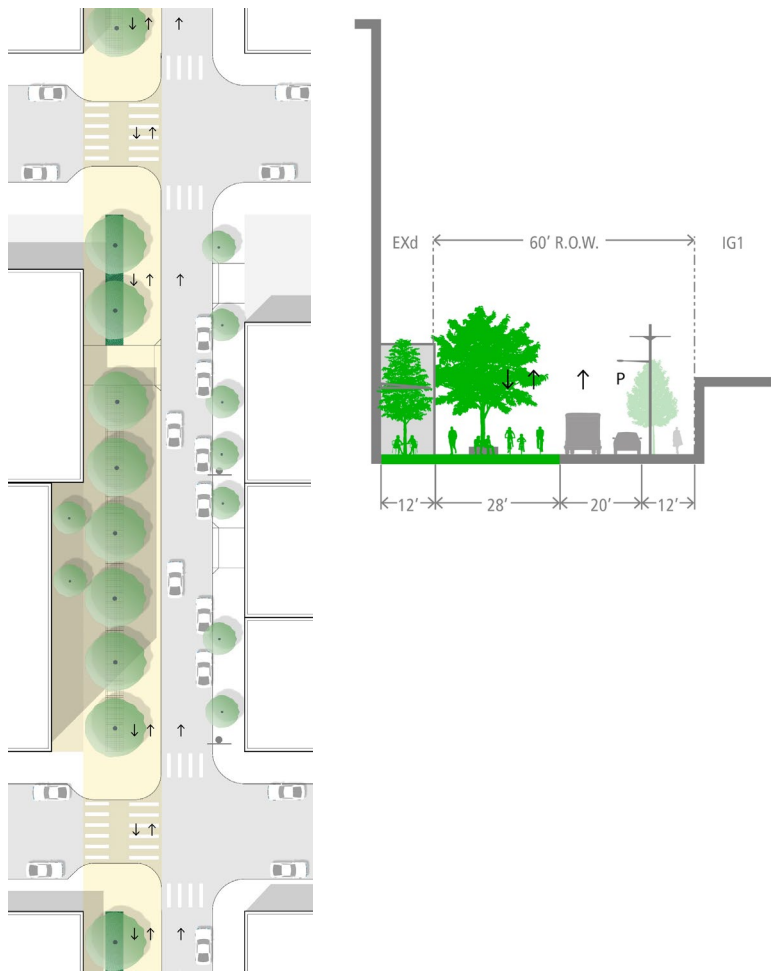
Architectural rendering of a proposed building. The drawing shows a multi-story building with a grid of windows. Key annotations include:

- Property Line:** Indicated by a dashed pink line.
- 100 - 200' Base Building Height:** Indicated by a vertical pink arrow.
- 12' Setback:** Indicated by a horizontal dimension line at the base of the building.
- 60' R.O.W:** Indicated by a horizontal dimension line for the Right of Way.

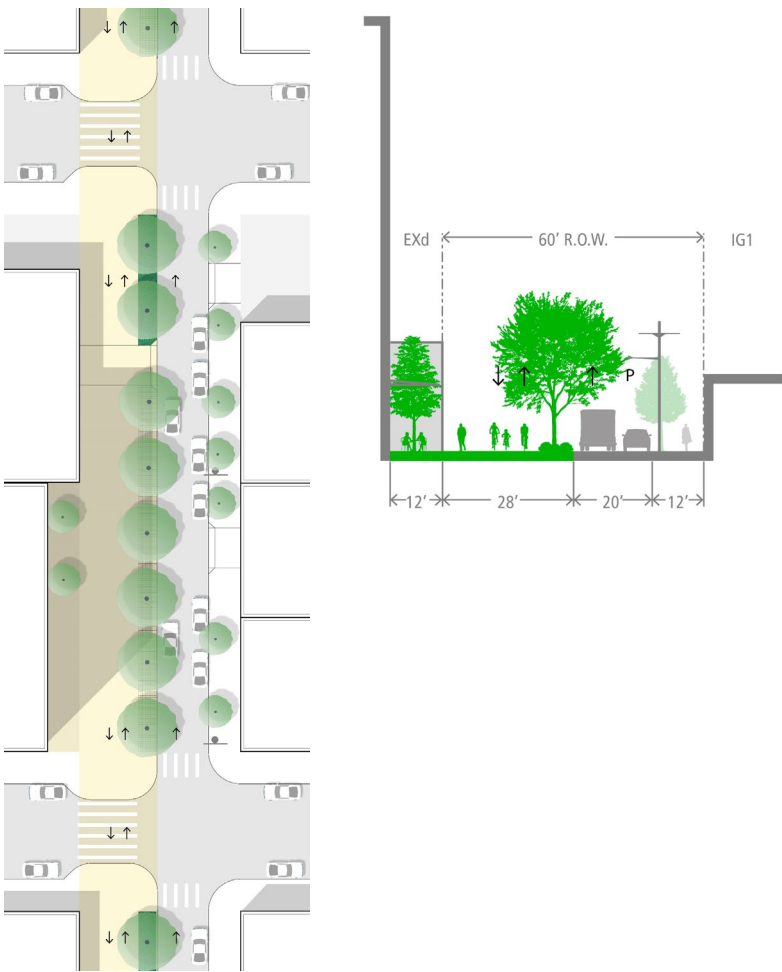


ADJACENT POINT OF INTEREST

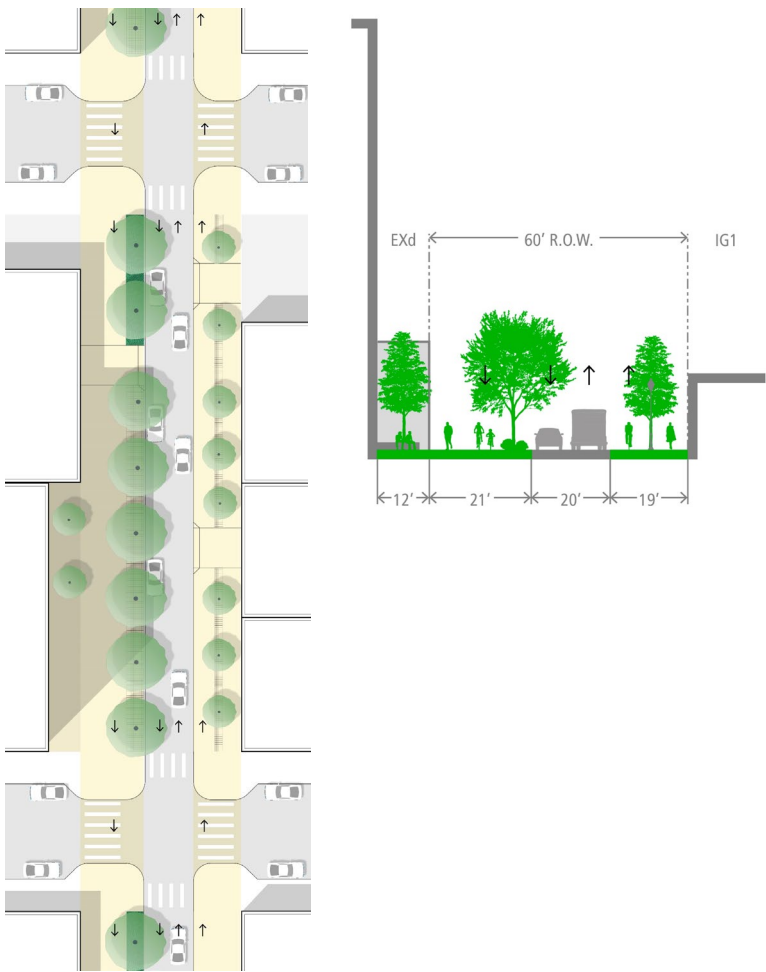
Concept Design – Arrangement of Elements



Concept A

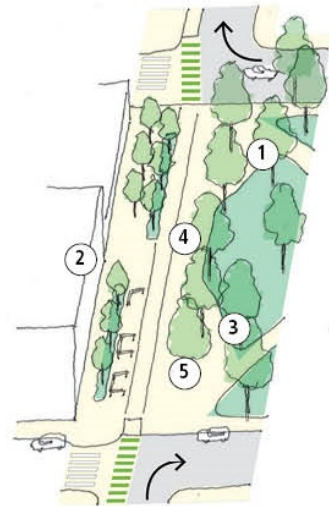
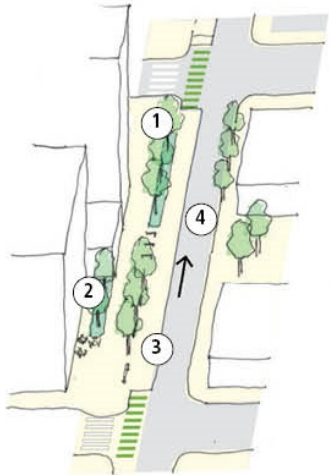
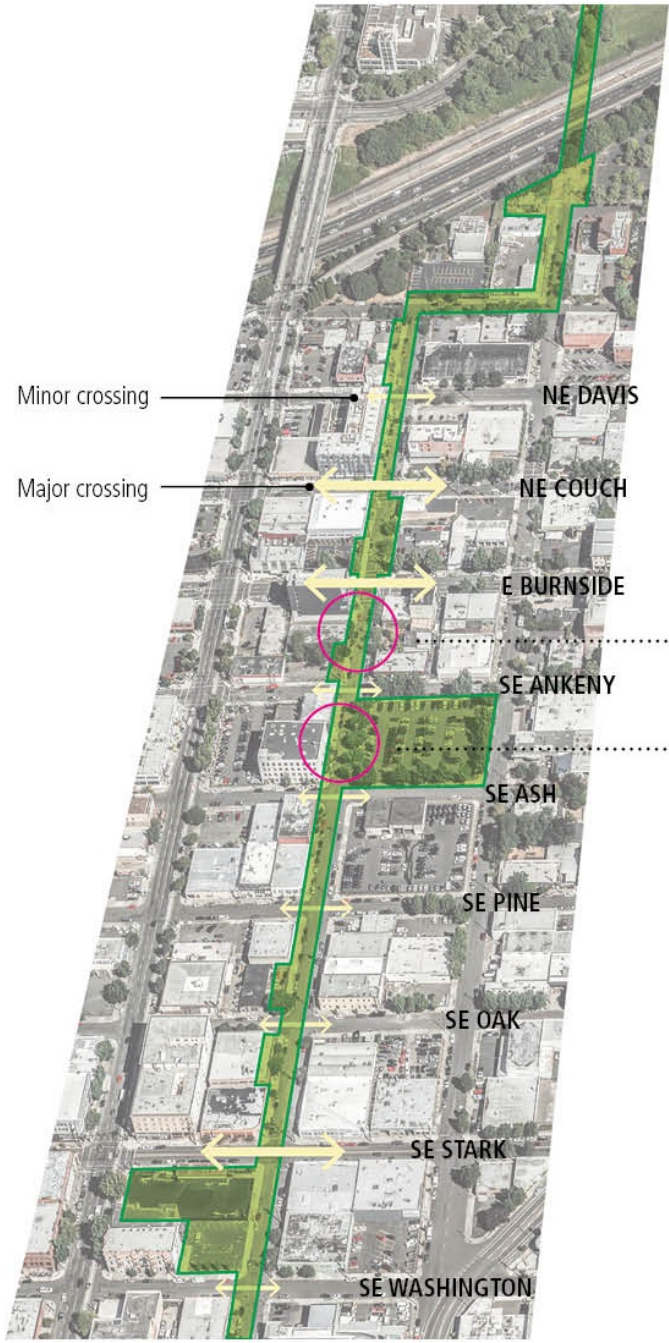


Concept B

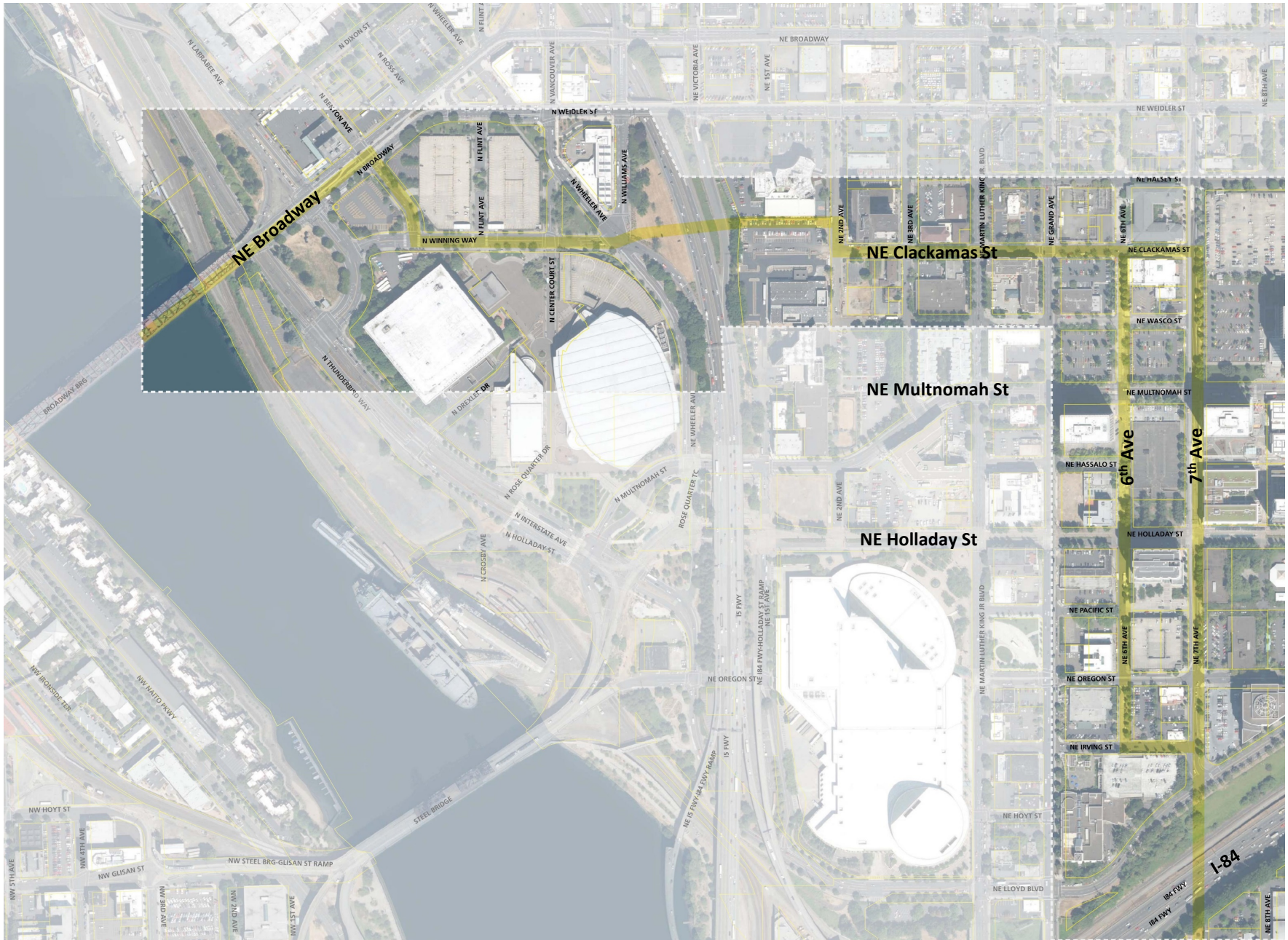


Concept C

Concept Design – Narrow & Wide Variations



Lloyd District Study Area

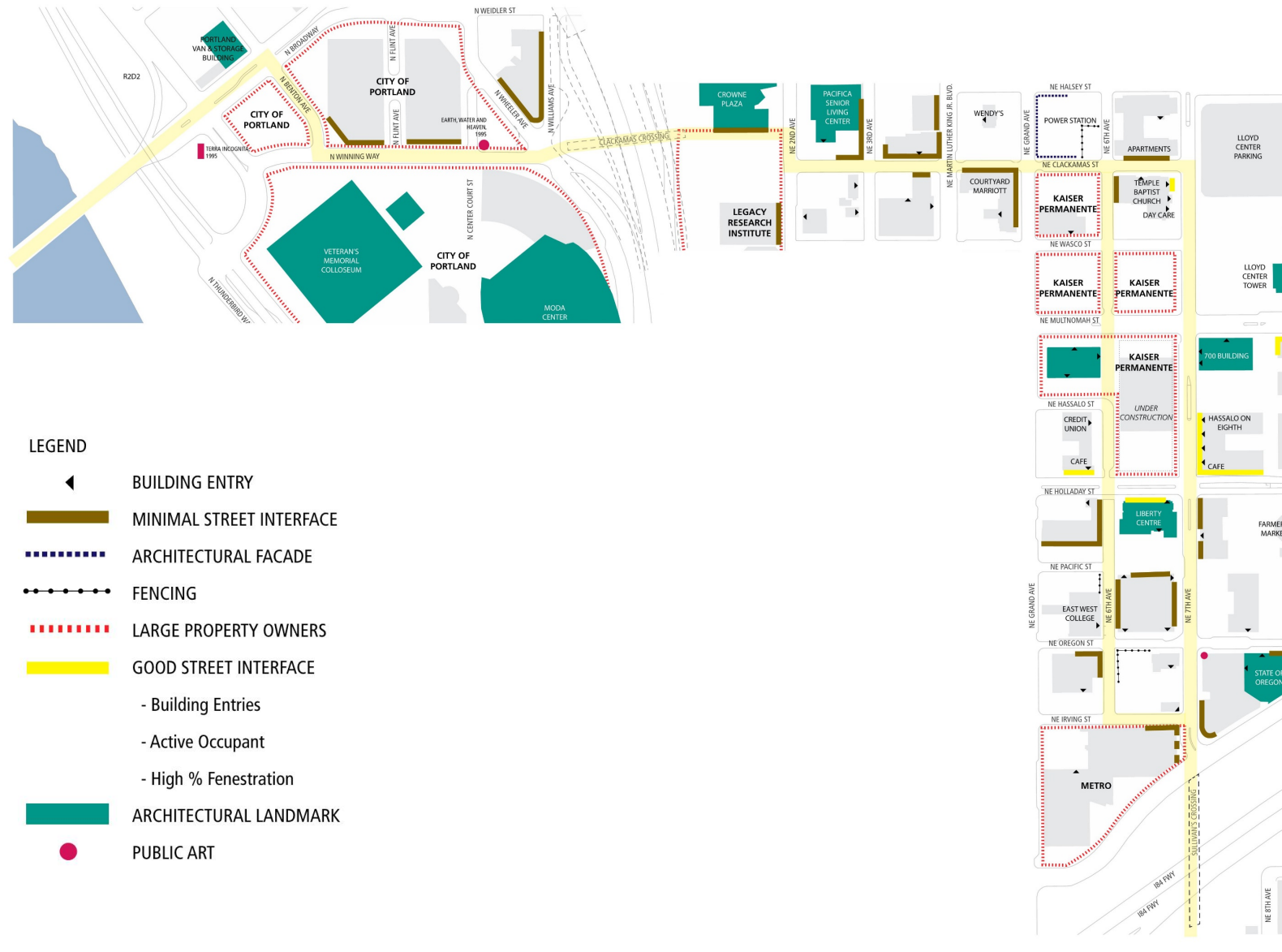


Lloyd Existing Conditions

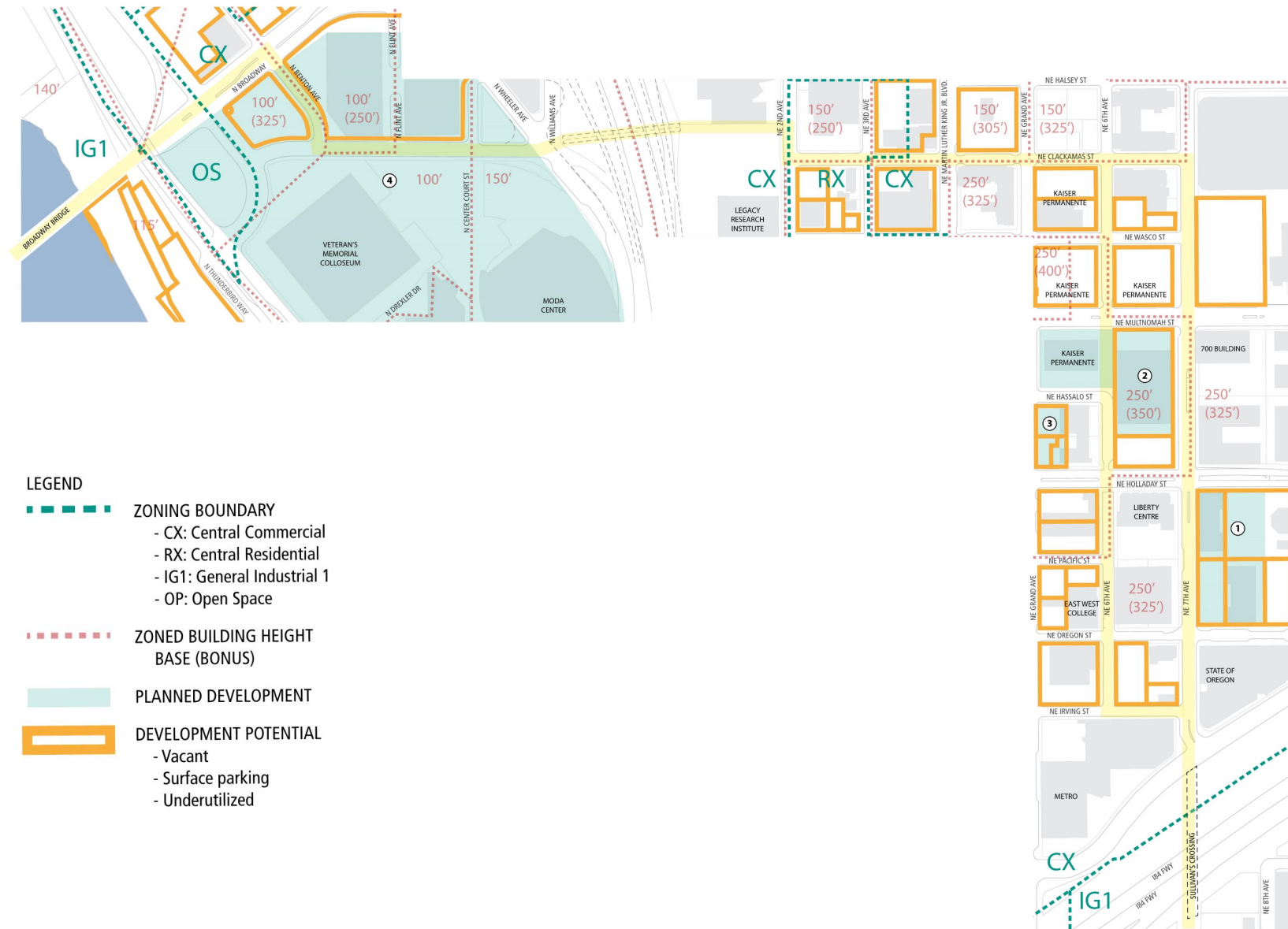
Street Condition



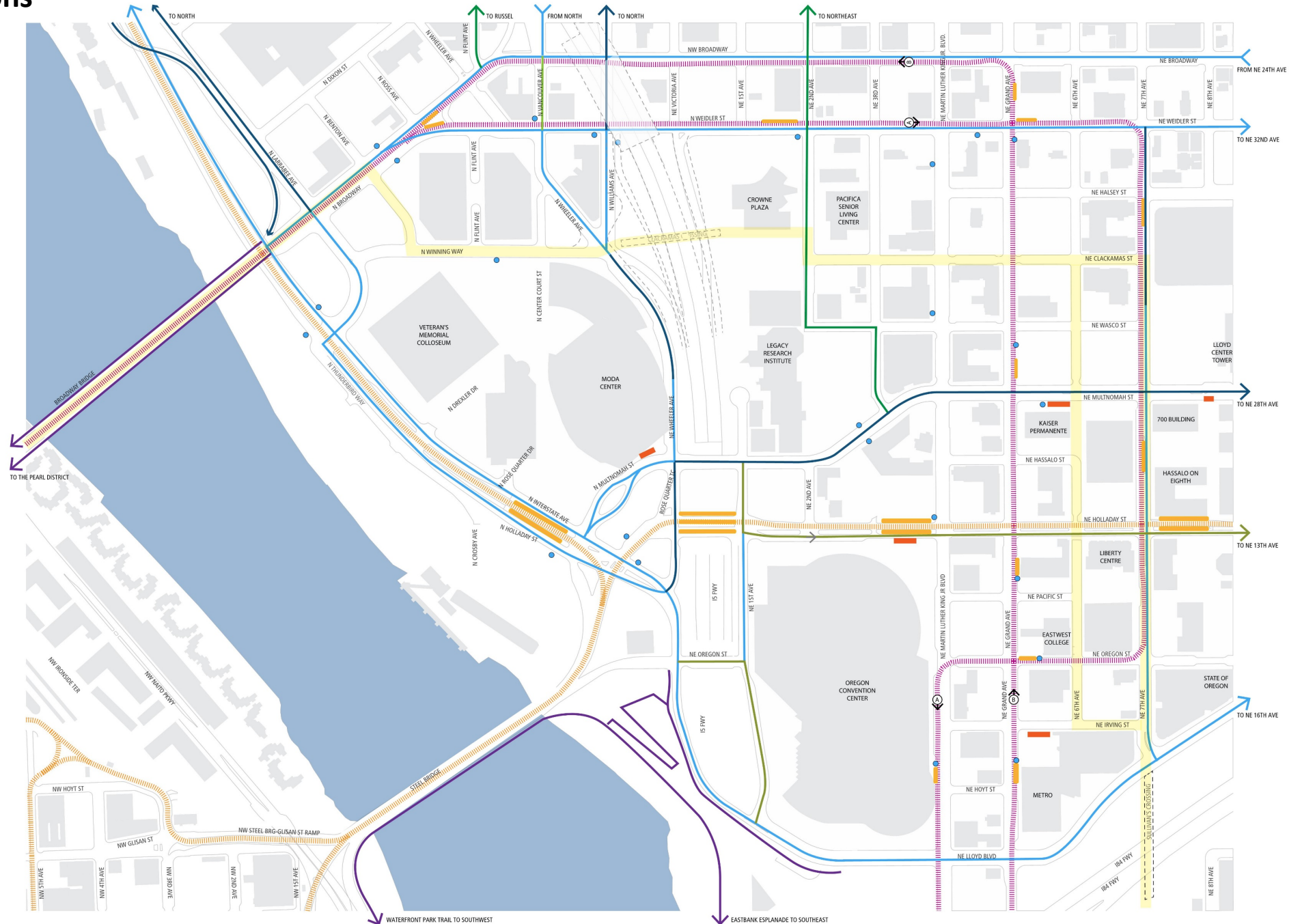
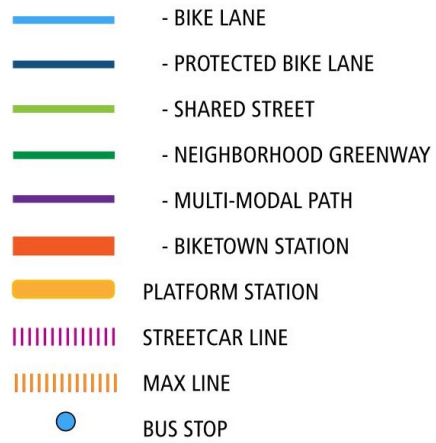
Building Condition



Land Use & Zoning



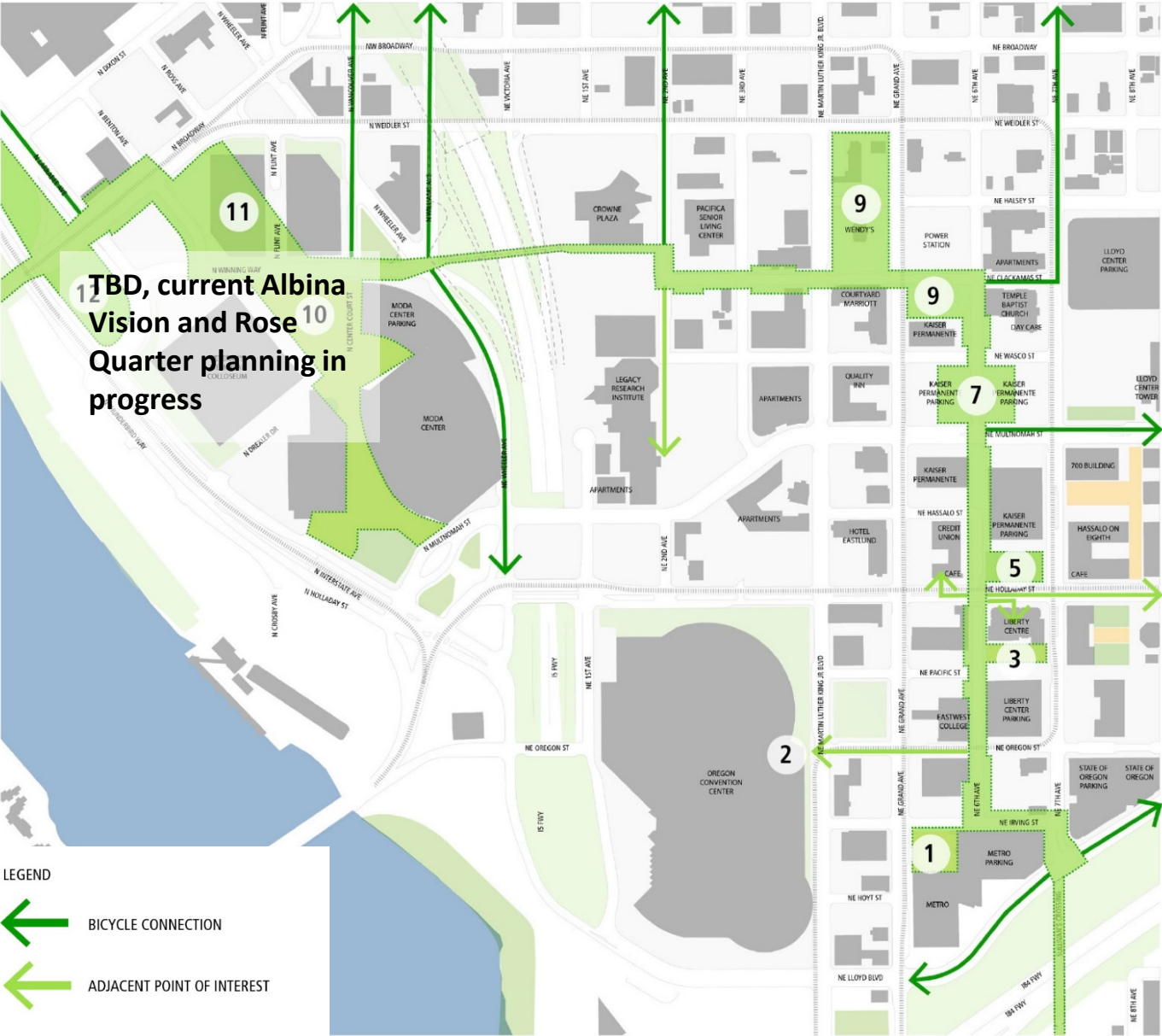
Transportation



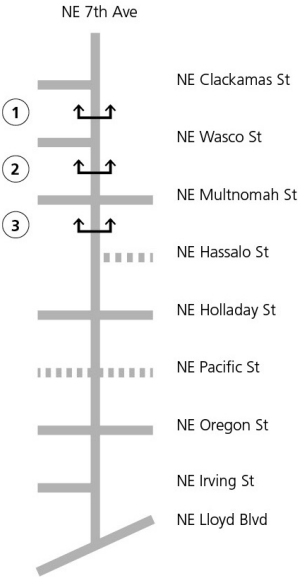
Lloyd Open Space Opportunities Analysis

6th Ave

7th Ave



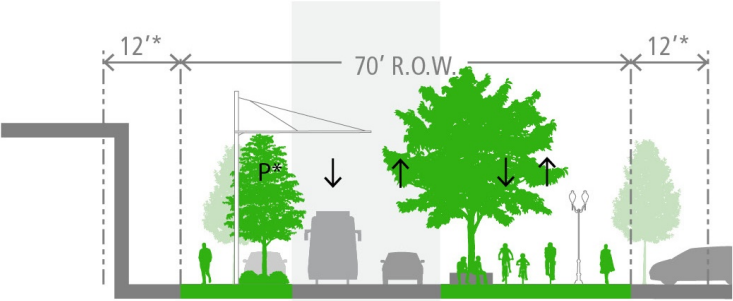
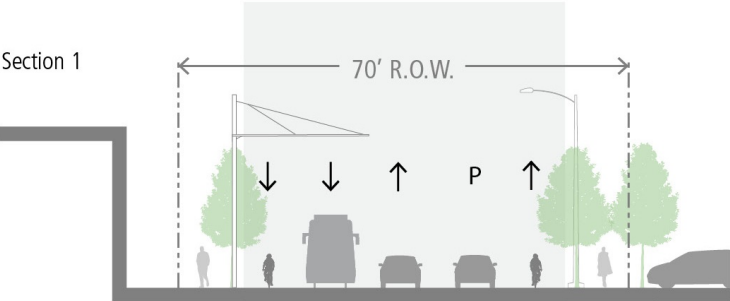
Concept Sections – 7th Ave



Existing

Concept

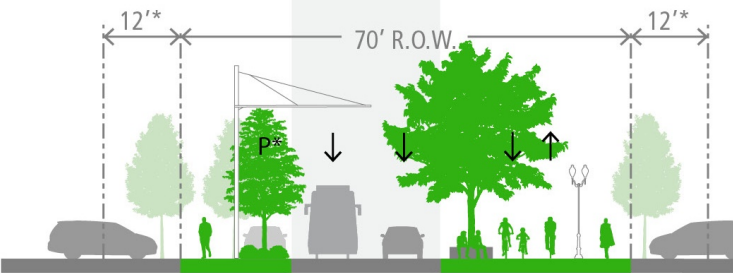
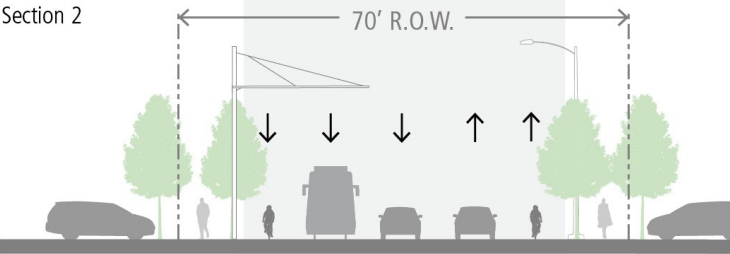
Section 1



Allows NB lane for access in/out of American Asset Trust property parking lot and garage.

Parking may alternate with planting.

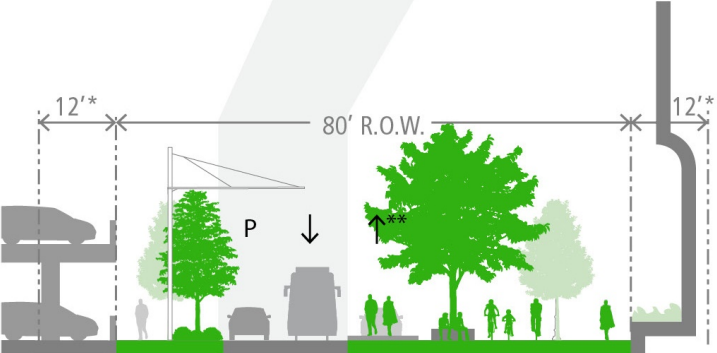
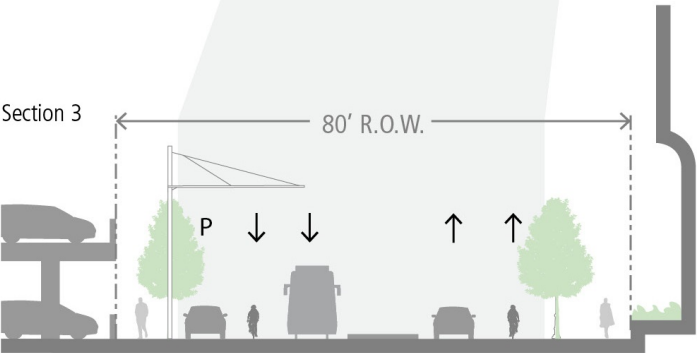
Section 2



Two SB lanes allows for left turn lane at Multnomah St.

Parking may alternate with planting.

Section 3



Streetcar platform adjacent to Green Loop.

** Consider NB lane north of the platform for access from Kaiser parking garage.

* Potential new development setback

Concept Design – Streetscape Character

