

SW Naito (I-405 to Jefferson) Permission to Bid



a Fixing Our Streets project



PBOT
PORTLAND BUREAU OF TRANSPORTATION

SW NAITO (I-405 TO JEFFERSON)



**Authorize a contract with the lowest responsible bidder for the SW Naito Parkway (I-405 to Jefferson) project*



Project Map

SW NAITO (I-405 TO JEFFERSON)

KEY PROJECT ELEMENTS:

- **PAVING MAINTENANCE:** *The project will grind and pave SW Naito Parkway between I-405 and Lincoln and fully reconstruct Naito between SW Harrison and SW Jefferson*
- **NEW SAFE AND ACCESSIBLE CROSSINGS:** *A new signalized mid-block pedestrian crossing of Naito between Harrison and Market will be installed, along with a full pedestrian signal at SW Jefferson, with connections to Tom McCall Waterfront Park and the new County courthouse*
- **HIGH QUALITY CYCLING CONNECTIONS:** *A two-way bike facility between SW Harrison and SW Jefferson will be installed on a stretch of Naito with no cycling facilities today*
- **ADDRESS TRAFFIC QUEING:** *A new traffic signal on the northbound Naito to Hawthorne Bridge ramp to improve traffic operations for vehicles approaching from SW Naito Parkway*

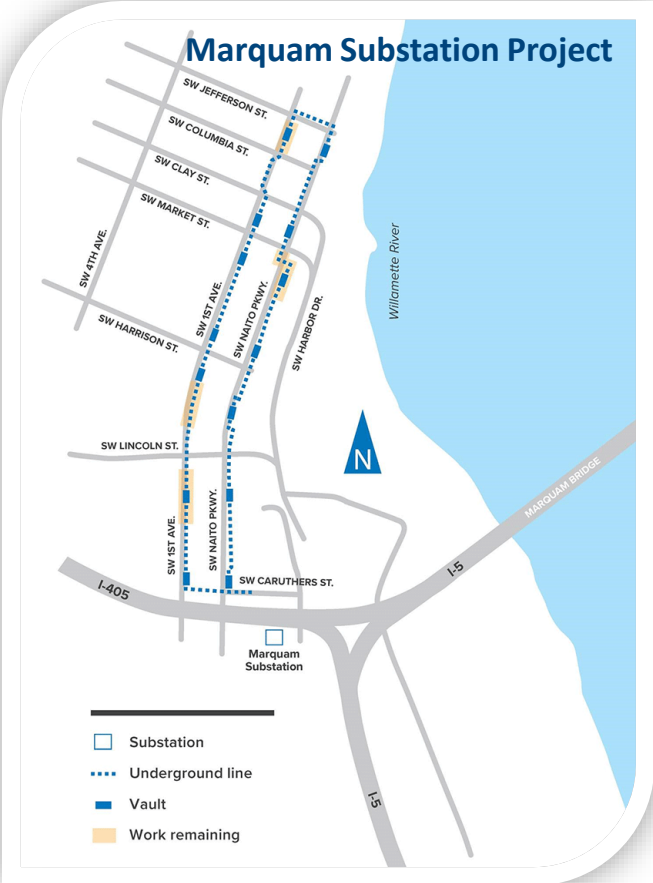
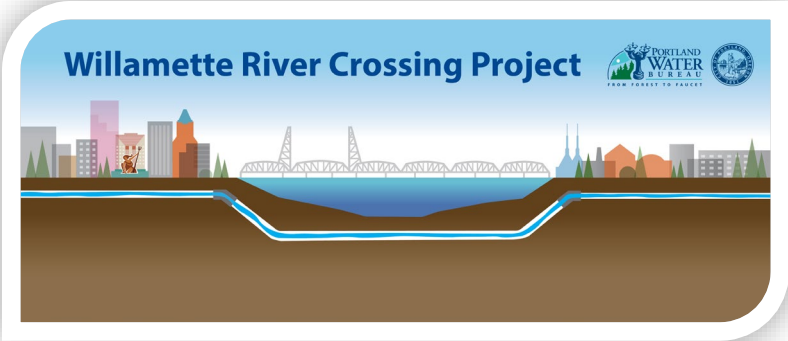
SW NAITO (I-405 TO JEFFERSON)

- **PROJECT ESTIMATE:** \$8.9M
- **PROJECT FUNDING:** Fixing Our Streets, TSDCs, Signal Maintenance Funding, HB2017, ODOT Jurisdictional Transfer Funding
- **CONSTRUCTION SCHEDULE:** Construction beginning spring 2020 through 2021.

INTERAGENCY COORDINATION

- **RESILIENT POWER:** *Project coordinated with PGE on their work to strengthen the resiliency of the downtown power supply which included an underground line and vault work in SW Naito. PGE completed work earlier this year to avoid damage to fresh pavement.*
- **RESILIENT WATER:** *Water Bureau, Parks, and PBOT staff have worked together on the Water Bureau's Willamette River Crossing project, which will serve as a resilient fresh water connection across the Willamette. The new pipe will connect into SW Naito in the project area. Staff are coordinating design and traffic control to minimize public impacts.*
- **IMPROVED PARK ACCESS:** *Parks and PBOT staff worked with Mayer/Reed to design improved accessible entrances to the Hawthorne Bowl, mitigate tree impacts, and create a cohesive design for the corridor*

INTERAGENCY COORDINATION



INTERAGENCY COORDINATION



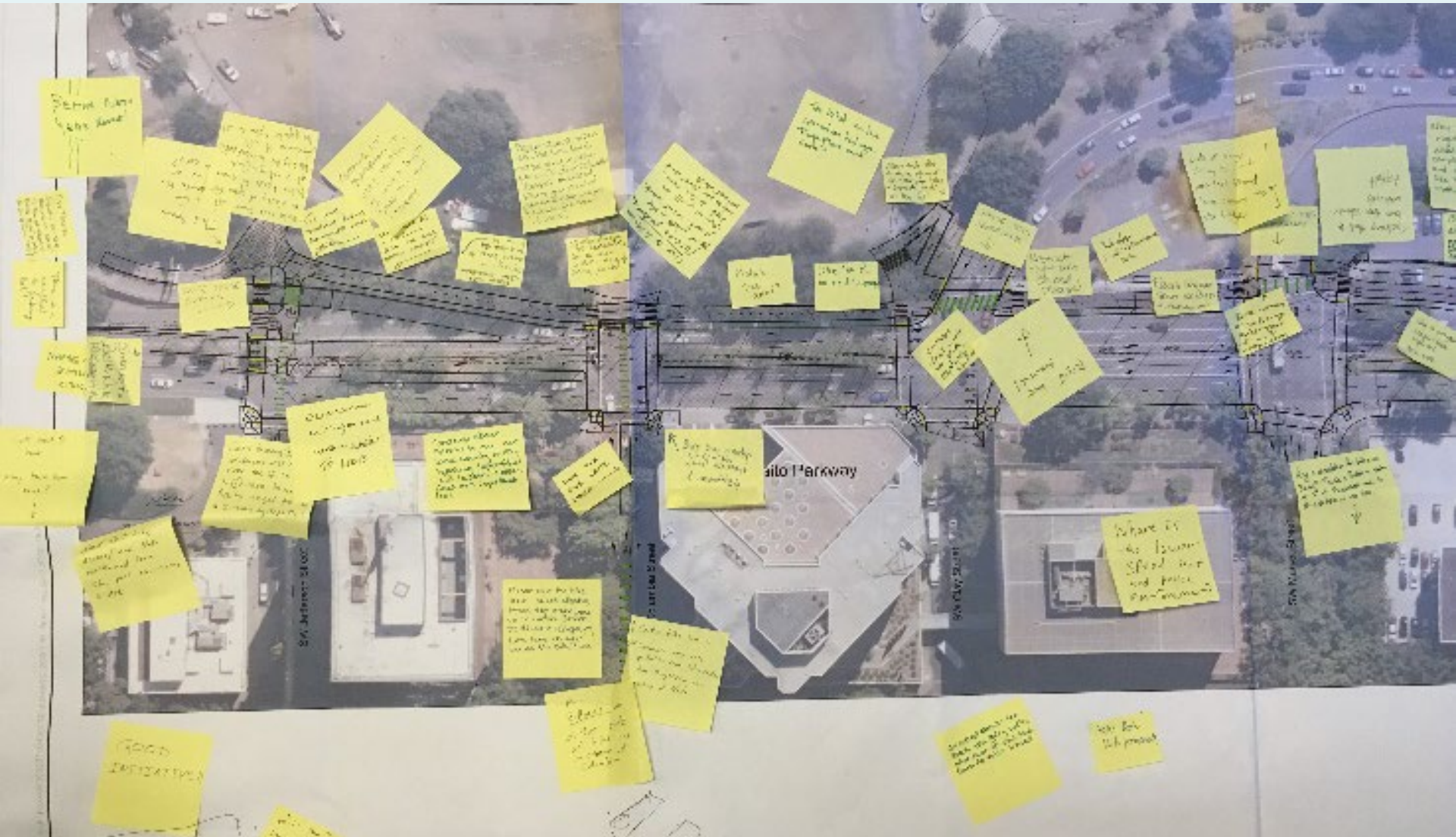
Mayer/Reed

Naito Parkway Improvement Project | DRAFT Illustrative Plan at Hawthorne Bowl | December 2017 | 1

PUBLIC ENGAGEMENT



PUBLIC ENGAGEMENT





SW Naito Parkway at midblock pedestrian crossing: *Existing Conditions*



SW Naito Parkway at midblock pedestrian crossing: *Proposed improvements*



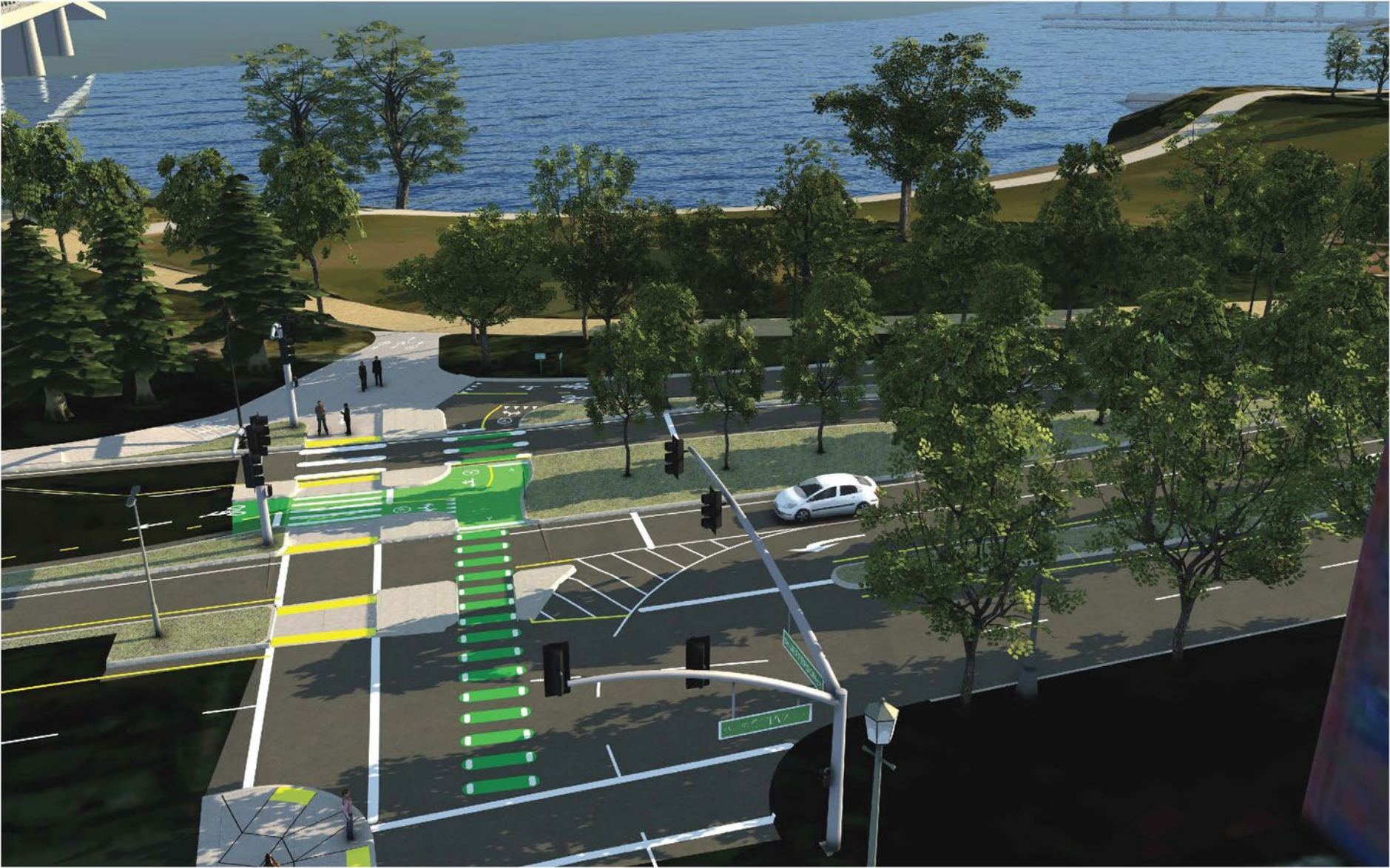
SW Naito Parkway at Clay Street intersection: *Existing Conditions*



SW Naito Parkway at Clay Street intersection: *Proposed improvements*



SW Jefferson Street at Naito Parkway intersection: *Existing Conditions*



SW Jefferson Street at Naito Parkway intersection: *Proposed improvements*

SW NAITO – Traffic Modelling

