

HACKER

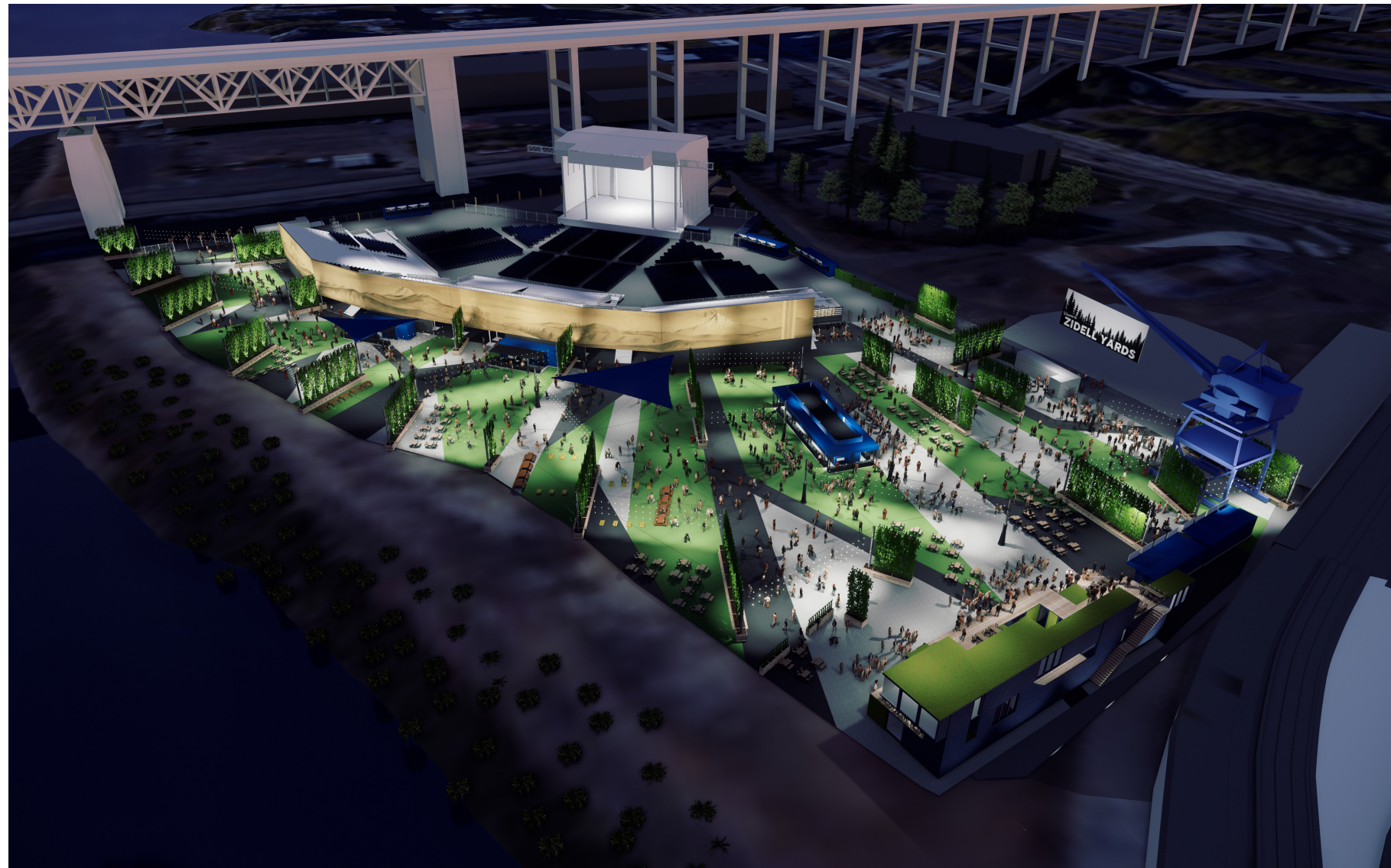
LIVE NATION AT ZIDELL YARDS

2019.09.24

Portland, Oregon

*Design Advice Request*

**Live Nation Entertainment at Zidell Yards**



- 1. Cover Sheet
- 2. Project Information and Index
- 3. Project Overview
- 4. Zoning Summary
- 5. Program Summary
- 6. Site Description
- 7. Site Photos
- 8. Context Photos
- 9. Site History
- 10. Materials
- 11. Site Access
- 12. Site Parking
- 13. Site Layout
- 14. Site Zones
- 15. Public Plaza: Concept
- 16. Public Plaza: Diagrams
- 17. Public Plaza: Site Objects
- 18. Public Plaza: Site Objects
- 19. Public Plaza: Crane
- 20. Public Plaza: Site Edges
- 21. Public Plaza: Food and Beverage
- 22. Venue: Stage + Back of House
- 23. Venue: Stage + Back of House
- 24. Venue: Stage + Back of House
- 25. Venue: Artist Compound
- 26. Venue: Seating
- 27. Venue: Seating
- 28. Venue: Seating + Art
- 29. Venue: Restrooms
- 30. Standard VIP Accommodation
- 31. Brewery Taphouse: Concept
- 32. Brewery Taphouse: Plans
- 33. North Gate
- 34. North Gate: Access Ramp
- 35. South Gate
- 36. ADA and Bike Parking
- 37. Greenway
- 38. Lighting
- 39. Site Plan
- 40. Rendering
- 41. Rendering
- 42. Rendering

Date: September 24th, 2019  
 Prepared By: Hacker Architects

Tenant: Live Nation Entertainment  
 Matt Prieshoff  
 Chief Strategy Officer

Architect/Applicant: Hacker Architects  
 Boyce Postma  
 Project Architect  
 503.227.1254



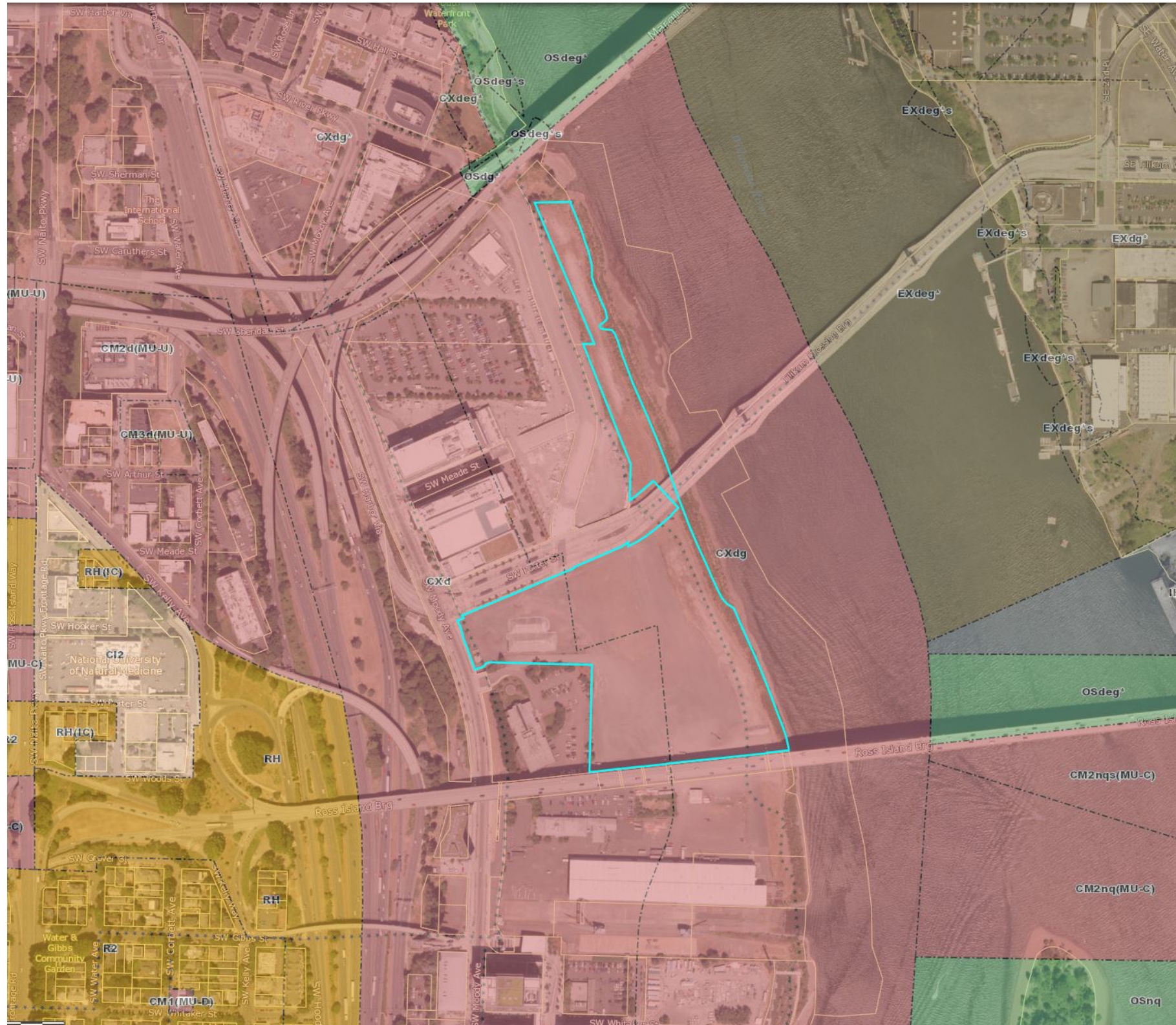
View from West Hills to Ross Island Bridge

## Project Overview

The Zidell Yards site is a large undeveloped parcel in the Central City, approximately one mile south of Downtown Portland. The once largely industrial waterfront area surrounding this property has seen remarkable change in recent years, with the development of high rise condos, an aerial tram, streetcar extension, and OHSU’s ongoing expansion. The site is well connected to downtown and Portland’s Central Eastside by bike, vehicle, and public transit infrastructure. The site boundary is roughly defined to the north and south by the Tilikum Crossing and Ross Island Bridge respectively. The eastern edge of the site fronts the west bank of the Willamette River. Its location within a developing district creates significant opportunities for creating a connected destination along the river.

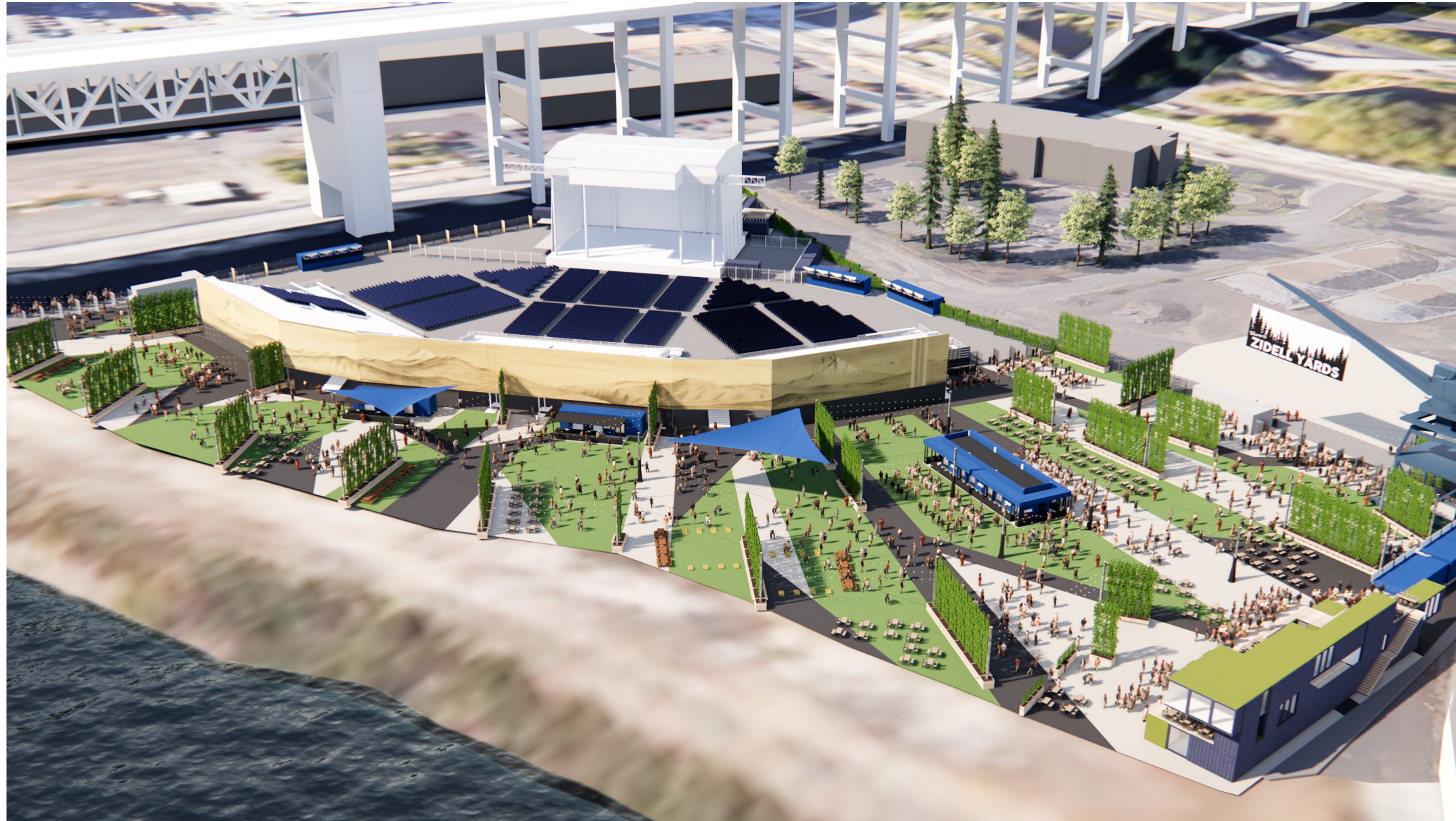
The project consists of a 10,000 seat Live Nation amphitheater, associated support structures, and open space with varying levels of public access. While the venue is temporary, the life span is still a significant 7 to 11 years, based on Live Nation’s lease agreement with Zidell, and needs to express a sense of permanence and connectedness to the life of Portland.

The proposal imagines a new entertainment venue that anchors Zidell Yards as a destination within the growing and changing South Waterfront. The site plan references Portland’s strong parks and open space legacy through the creation of a large plaza offering unique views, flexible space, and waterfront access. This temporary venue is intended to activate the waterfront, honor the Zidell family and their contribution to the history of Portland, and embrace the city’s unique and eclectic arts community.



**Zoning Summary**

BASE ZONE:	CX - CENTRAL COMMERCIAL
OVERLAYS ZONES:	d - DESIGN OVERLAY ZONE g - RIVER GENERAL
DESIGN REVIEW:	TYPE III
TRANSIT STREET:	SW MOODY AVE
PRIMARY USES:	MAJOR EVENT ENTERTAINMENT
ACCESSORY USES:	RETAIL SALES AND SERVICE
MAX FAR:	4:1 CC PLAN DISTRICT
MIN FAR:	1:1 CC PLAN DISTRICT
HEIGHT:	75' ALLOWED IN BASE ZONE 75'/200' ALLOWED IN CC PD NO MIN SETBACK PER BASE ZONE OR CC PLAN DISTRICT 10' MAX AT STREET LOT LINES
SETBACKS:	
BUILDING COVERAGE:	100% ALLOWED
LANDSCAPED AREAS:	REQUIRED IN SUBAREAS 2 & 3 PER GREENWAY OVERLAY ZONE IN SOUTH WATERFRONT SUBDISTRICT BANK IMPROVEMENTS IN SUBAREA 1
WINDOWS:	+60% AT GROUND LEVEL
PARKING:	NONE REQUIRED
BIKE PARKING:	(10) LONG TERM 1 PER 40 SEATS OR PER CU REVIEW NO SHORT TERM
LOADING:	NONE REQUIRED



Daytime Aerial

### Program Summary

The proposed development is a music venue with seating for 10,000, a public plaza space, a local brewery tap-house, and associated support structures. The music venue is comprised of an 8,400 sf stage, backstage support, backstage talent trailers, floor seating, and 30 tier structured seating. This area also includes 3 beverage points of sale.

The plaza is approximately 113,000 sf and is open to the public year round. The large space is brought down to a human scale by walls composed of climbing hops, a floor pattern made in part with local basalt, and a 'ceiling' plane of cables and intimate lighting.

The structures in the plaza area include two box offices, one security office, two food points of sale, and the local brewery tap-house. All inhabitable structures on the site are made from recycled shipping containers - a theme tied to the site's waterfront proximity.

The tap-house is three levels - the first level is only open during events and serves food and beverage. The second and third levels are operated by the local partner brewery and operate both during events and throughout the year. The structure offers extensive outdoor space to create a visual connection with the river, surrounding bridges, and the plaza below.

The site is bordered by the greenway to the east, Tilikum crossing to the north, and a varied barrier of jogging fences and shipping containers along the west and south edges. Local art interrupts the jogged fencing at regular intervals.



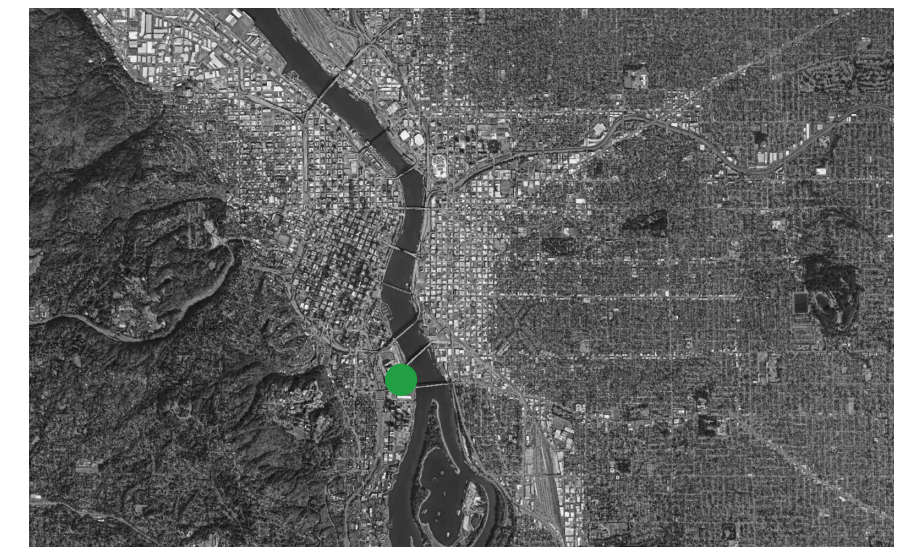
**Site Description**

The site is located along the Willamette River between the Ross Island Bridge to the south and the Tilikum Crossing to the north. The land lease is for a section of the larger Zidell property. Other buildings on the site include the Zidell barge building, a commercial office space, and an office space occupied by OHSU.

The east side of the Live Nation site borders the Willamette Greenway, though it is currently undeveloped. The riverbank has undergone extensive revitalization in recent years, featuring new, ecologically appropriate planting.

The two bridges on either side of the Live Nation Site are substantially raised above the site - the Ross Island Bridge is approximately 30' above the ground and the Tilikum Crossing is approximately 15'-20'. The Ross Island Bridge has significant historic character adding to the charm of the site. The Tilikum Bridge is a fantastic vantage both to see and be seen from the site.

The grade of the existing site is largely flat with a small increase in elevation before dropping steeply to the river - access to the river from the site is dangerous for pedestrians due to rocks, brush, and grade.





View from Tilikum Crossing (SW)



View from Tilikum Crossing & SW Moody (SE)



Existing Parking Lot

OHSU

MAX / Streetcar Stop

Tilikum Crossing

Willamette River

Ross Island Bridge



Tilikum Crossing from SW Moody Ave. OHSU on the left



Corner of SW Moody and Tilikum Crossing



Tilikum Structure



Bus stop at on Tilikum Crossing



Future Bond Street recently completed



Ross Island Bridge



OHSU Aerial Tram with Zidell Crane in background



Ross Island Bridge and OHSU in the background



### Site History

The Zidell story begins in 1912, when Yeschie Zajdell arrived in Portland, Oregon from the small western Russian village of Smidyn.

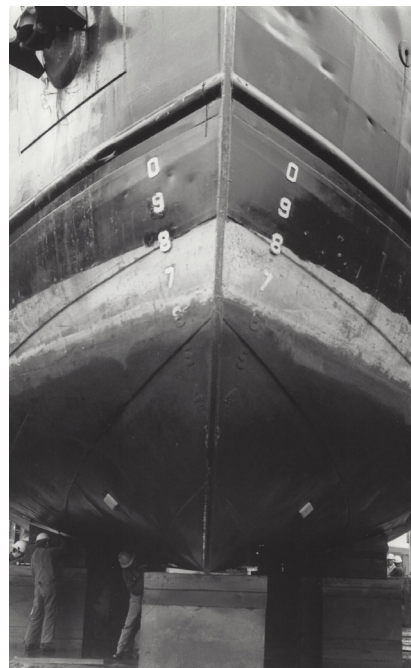
Sam Zidell, as he came to be known, began his life in America selling second-hand machinery, first in Roseburg, Oregon and later in Portland as Zidell Machinery and Supply, with a scrap yard on the waterfront.

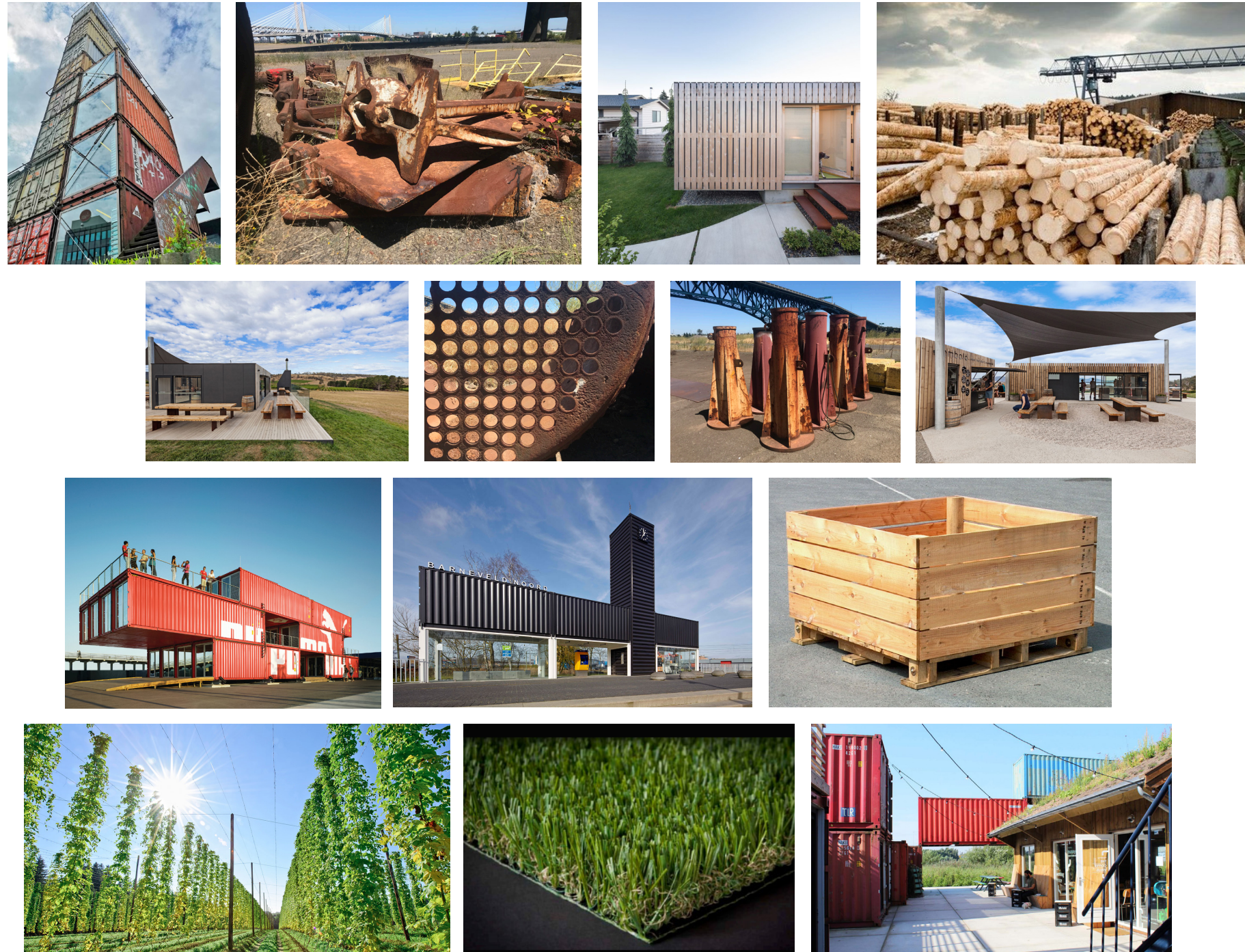
After World War II, with steel in high demand, Sam's son Emery saw the potential in scrapping decommissioned war ships. By 1960, Zidell had become the largest ship dismantling operation in the country, employing hundreds of men in the salvaging of ships.

Realizing that material from the ships could be put to new use, Emery went on to create thriving valve and tube forgings businesses and Zidell Marine, an innovator in steel barge design and construction.

Since 1996, Zidell has been led by Emery's son, Jay Zidell. Jay, the third generation to lead the family business, started as a worker in the scrap yard more than forty years ago and now serves as President of Zidell Marine, Tube Forgings of America and Zidell Yards. Beyond the family name, Jay shares his father's and grandfather's dedication and determination, as well as their long-held reputation for supporting and growing the arts, education and community.

In 2010, Matt French, grandson of Emery Zidell, joined the company to explore and develop possibilities for Zidell Yards, the land that sat beneath his family's industrial operations for more than half a century.





### Materials

The construction materials throughout the project are simple, industrial, weathered, and reminiscent of Portland and the site's past. These materials are placed together in a way that is clean, contemporary, and legible.

The shipping container is the primary building block for all structures on the site. This is where all interior experiences begin. Plush local flora will be planted to surround and encompass these hard edged volumes.

Other materials make direct reference to the agriculture brought onto the site. A variety of hops are grown right on site - encouraging visitors to engage with this important Oregon crop. The hops themselves are grown from boxes reminiscent of apple boxes.

Blended into these vertical materials, are artifacts from Zidell's past. Large anchors and boilers will be placed on the site, reminding all of the rich history here.

The ground plane will be largely composed of an artificial grass, highly realistic, resilient, and recyclable thanks to new manufacturing technology.



**SITE ACCESS**

This site is a prime location for a music venue with its proximal location to a wide variety of public transportation options. Convenient bus lines, the Portland Streetcar, the MAX, and heavily used bike and pedestrian paths all utilize the adjacent Tilikum Crossing.

SW Moody Avenue is also a prime public transportation corridor and major bike path. Bike parking is located directly off SW Moody for events, and some additional short term bike parking will be located on site for non-event days.

Vehicular traffic is largely expected to consist of ride-share and drop-off/pick-up. The south gate will be used by these patrons, and has been designed to minimally impact traffic on SW Moody. Long areas of queuing are provided on site to prevent on-street backups.

Private vehicular parking will be available at nearby parking lots secured through agreements with Live Nation. These parking lots will be made available to patrons when they buy their event ticket to reduce congestion and queuing on public streets.

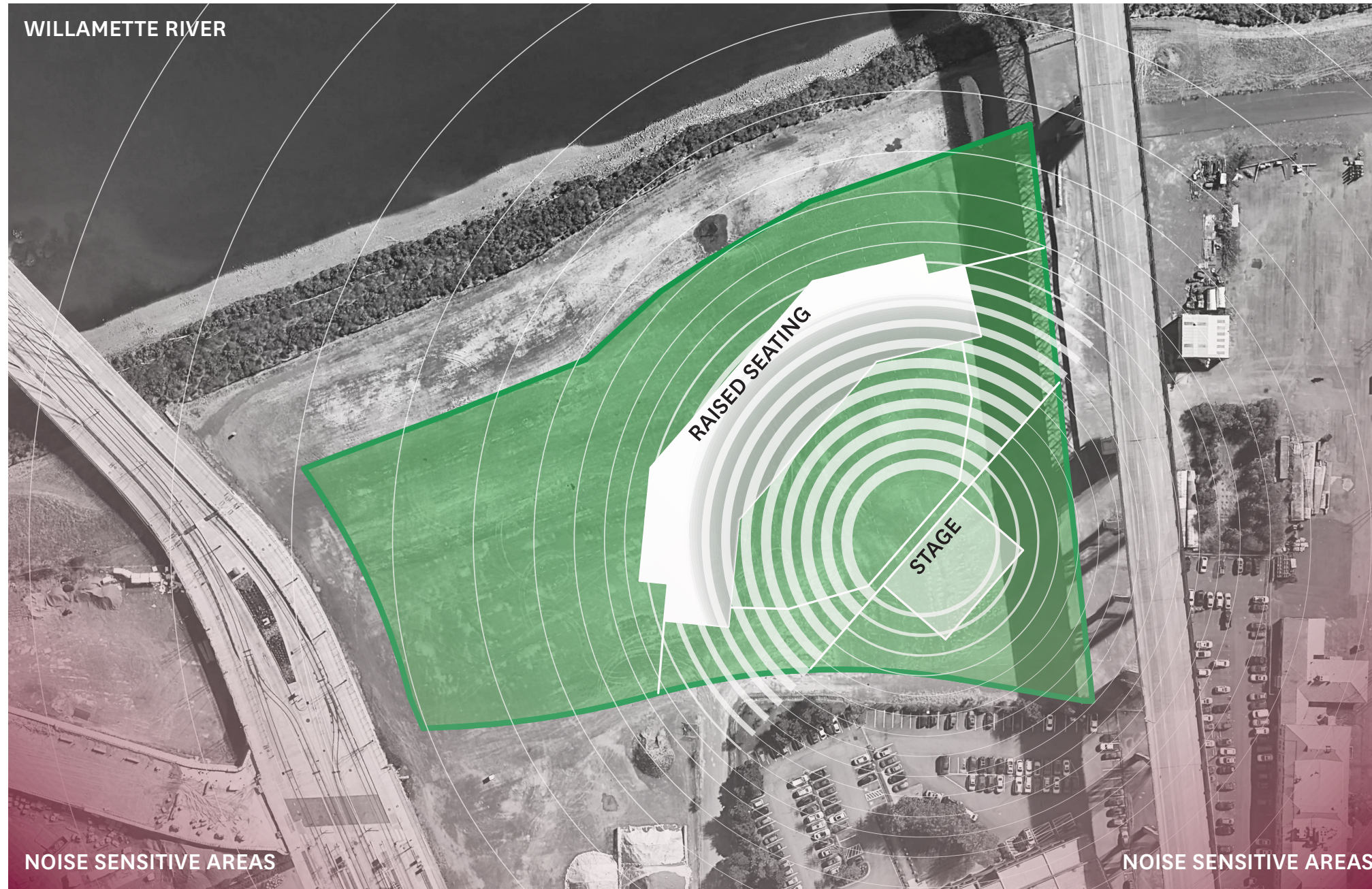


**SITE PARKING**

Site parking is a challenge, but with Live Nation’s technology, an urban location, and an accessible pedestrian system, the impact to surrounding sites should be minimal.

Live Nation is prepared to form agreements with the many parking lot owners in the vicinity. These parking spaces will be available at a variety of price points when purchasing event tickets online. By utilizing parking areas spread across the area, traffic will be diluted.

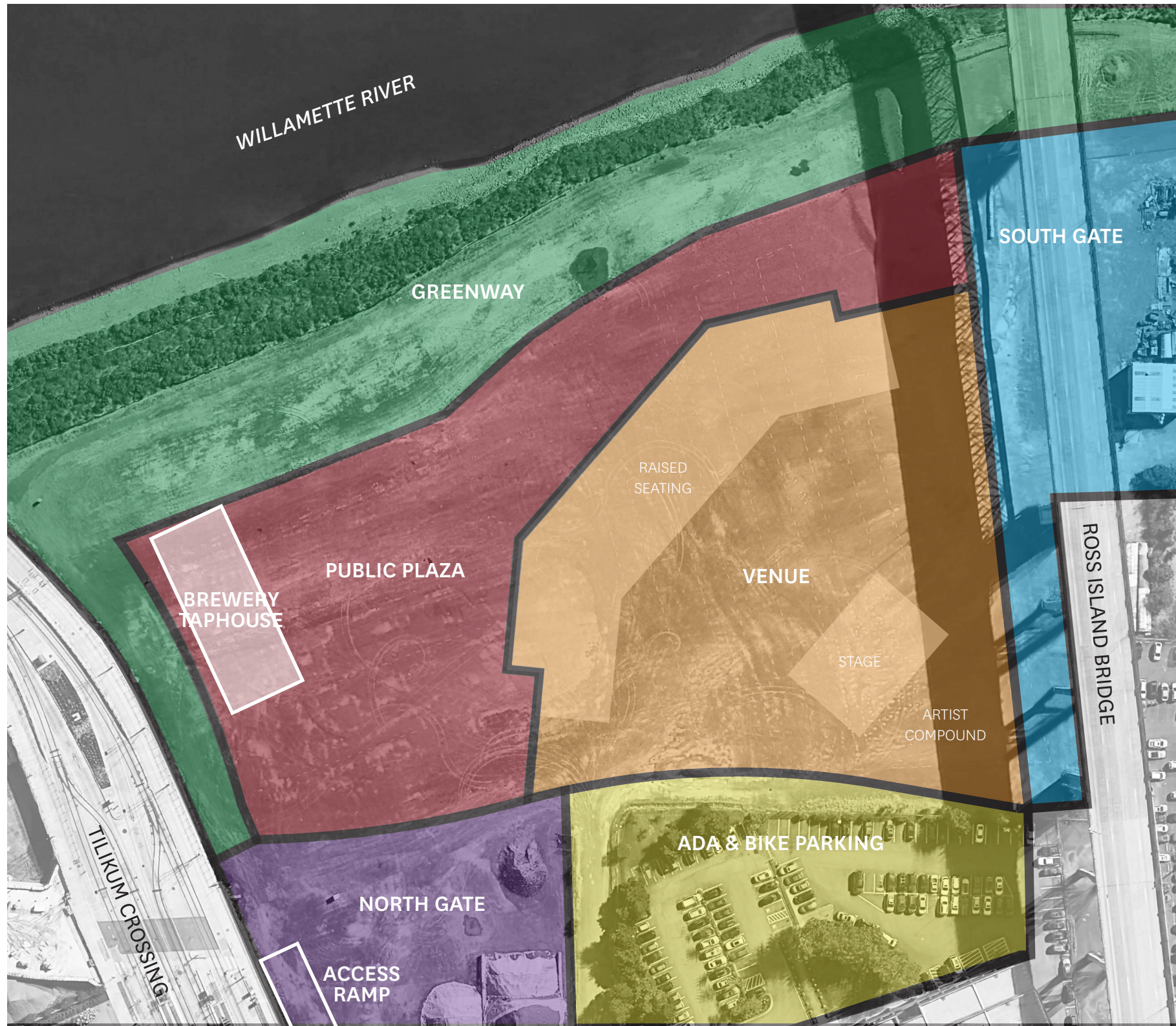
The urban location already contains a number of existing parking lots, most of which are not utilized during the hours of Live Nation events. This is an efficient use of existing infrastructure and is economical for local businesses.



### Site Layout

The orientation of the primary site program is based on the direction of sound coming from the performance stage. The most sensitive built areas around the site are to the north, south and west. Therefore the stage is pointed towards the east - towards the river.

The back 30 rows of the seating structure are raised both to increase view range for customers and to absorb sound coming from the stage. People, clothes, chairs and steps are all acoustic buffers - absorbing and muffling volume.



**Site Zones**

**Public Plaza**

Large public space open year around. This area features a unique ground pattern design, walls of hops, overhead lighting, and accessory buildings for food and beverage sales.

**Brewery Taphouse**

Though located within the Public Plaza, the Brewery Taphouse is the only large conditioned structure on the site, and has its own unique programmatic elements. This two level structure is made from shipping containers and will be operated by a local brewery.

**Venue**

The venue is open to only Live Nation customers during events. This area has both ground and raised seating, the stage, an artist compound and event restrooms under the raised seating. The back of the raised seating will feature art by a local artist.

**Greenway**

The greenway is an integral part of the site as a means of connecting people to the river and its ecology. No development will take place within the setback, and no barrier will exist between the site and the greenway.

**ADA & Bike Parking**

This is the only parking available on the larger Zidell site during event hours. Adequate ADA parking will be provided with easy access to the North gate, as well as the possibility of up to 1,000 temporary bike parking spots.

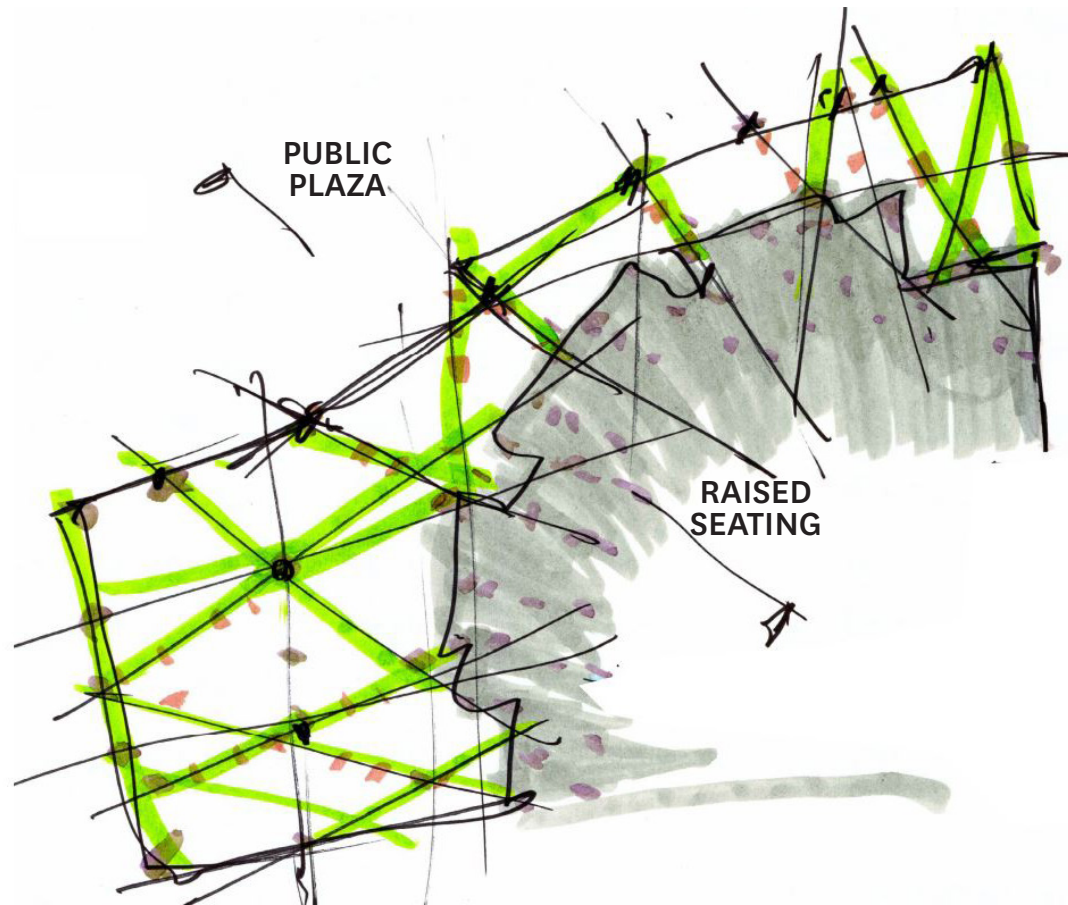
**North Gate**

The north gate connects the site to the Tilikum Crossing via a long and generous ramp for pedestrians and bicycles. This is entrance on non-event days.

**South Gate**

The south gate provides a separate entrance for ride-share and general drop-off. This gate is used only during event hours.





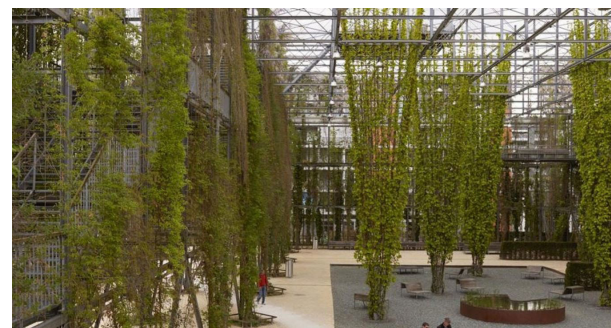
### Public Plaza Concept

This site has a long storied history. Once a natural riverbank, used to hunt and gather by Native Americans, this place more recently was one of the most prolific ship-breaking yards in the United States. Through that industrial period, the site saw significant contamination.

Now in it's modern context, this place has been environmentally remediated, and we want to continue this process, by expressing the idea of nature taking back the land through agriculture. Industrial artifacts will remain on the site, allowed to be reduced by time and weather.

The fusing of this industrial past, with contemporary nature and agriculture is explored through growing local hops varieties on site. This plant, used primarily in the production of beer, and specifically our local varieties of India Pale Ales, grows vertically on twine strung from poles across vast areas. Of the agriculture Oregon is known to host, this may be the more architecturally dramatic.

These walls of hops will be aligned on a radiating geometry, extending from the stage and surrounding bridges. They provide a means of breaking down the scale of the site, provide shade, and ultimately can be harvested and used by the sponsor brewery.

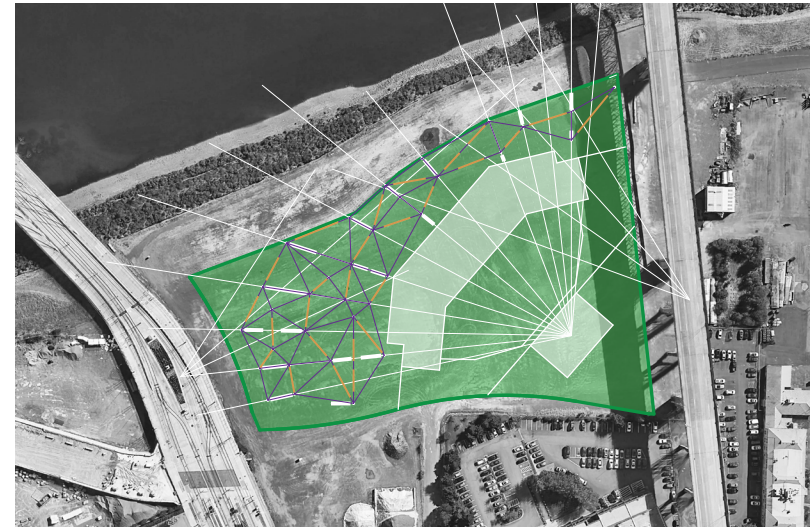


PUBLIC PLAZA: CONCEPT



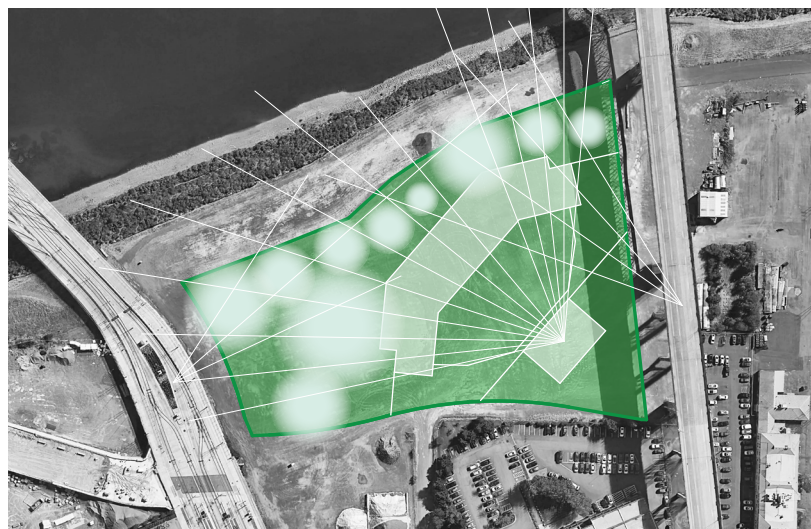
**Rooms**

Given the expansiveness of the public plaza, it was important to begin our strategy by breaking the space down into smaller more human scale rooms. These rooms vary in scale, from intimate to large gathering.



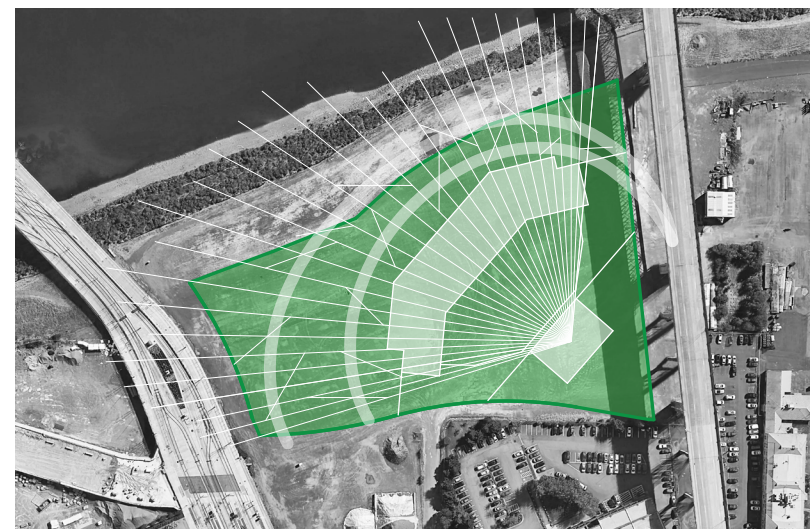
**Light Ceiling**

As the walls of hops reinforce the smaller spatial dimensions, the ceiling of lights above act as guides from one side of the site to the other. A system of cables (shown diagrammed in purple) form an overhead grid, while the lights (orange) are strung in a pattern that follows the shape of the public plaza.



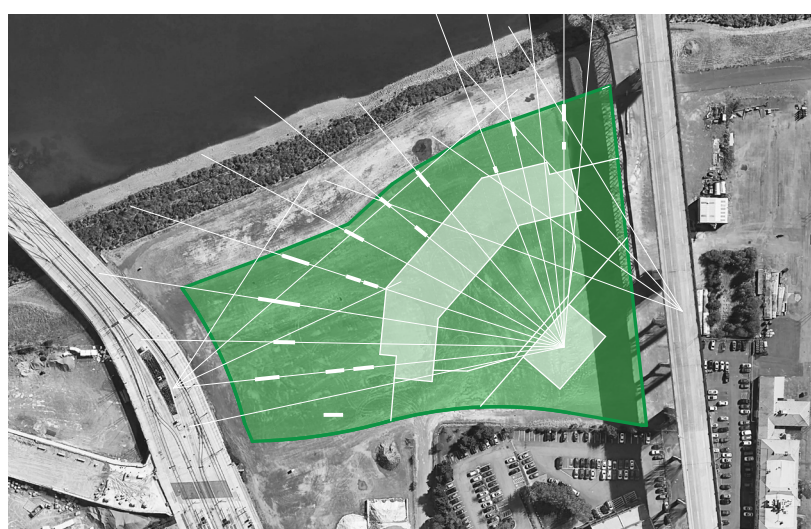
**Geometry**

An overlay of geometry radiating from key points on the stage and surround bridges frame these rooms and provides a means of aligning site objects.



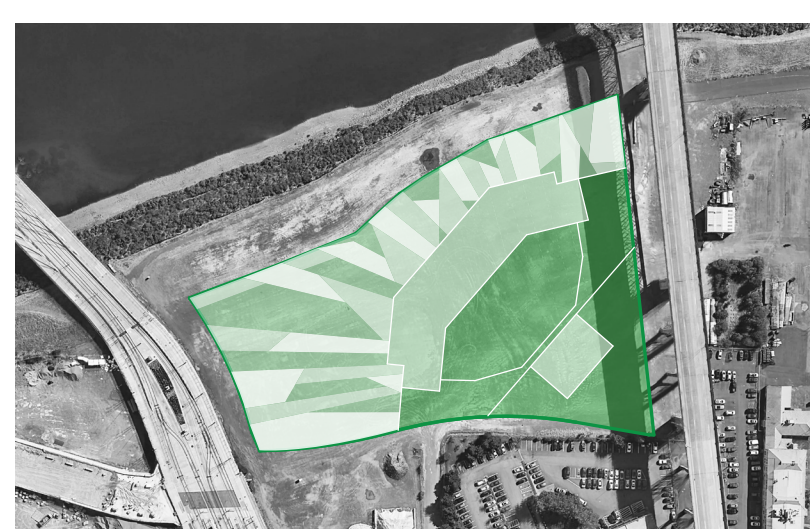
**Ground Plane**

The ground plane geometry is first divided by the radiating geometry expanding from the stage. Then an overlay of radiating and rotating lines is applied to break these larger planes. The form gives a sense of flow between the two gates, connecting the extremes of the oddly shaped plaza.



**Layering**

Semi-transparent walls of hops are placed along site geometry to create vertical layering as one moves through the site.



**Ground Materials**

Finally, materials are added to the ground plane. The primary ground cover is an artificial turf. Secondly, multiple layers of permeable paving give the large ground plane a level of filigree.

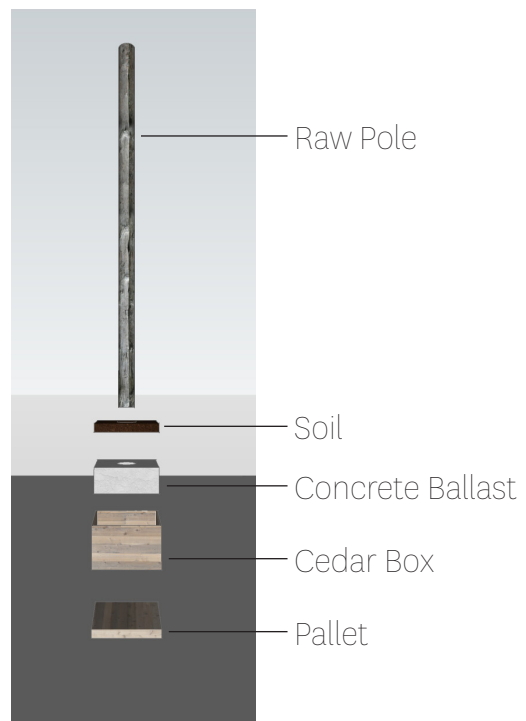
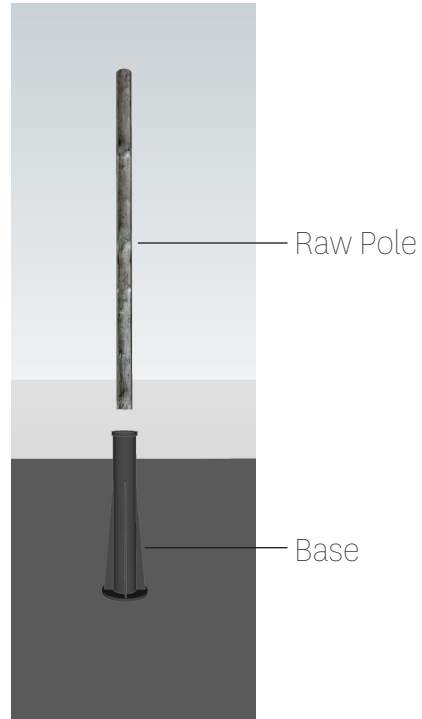


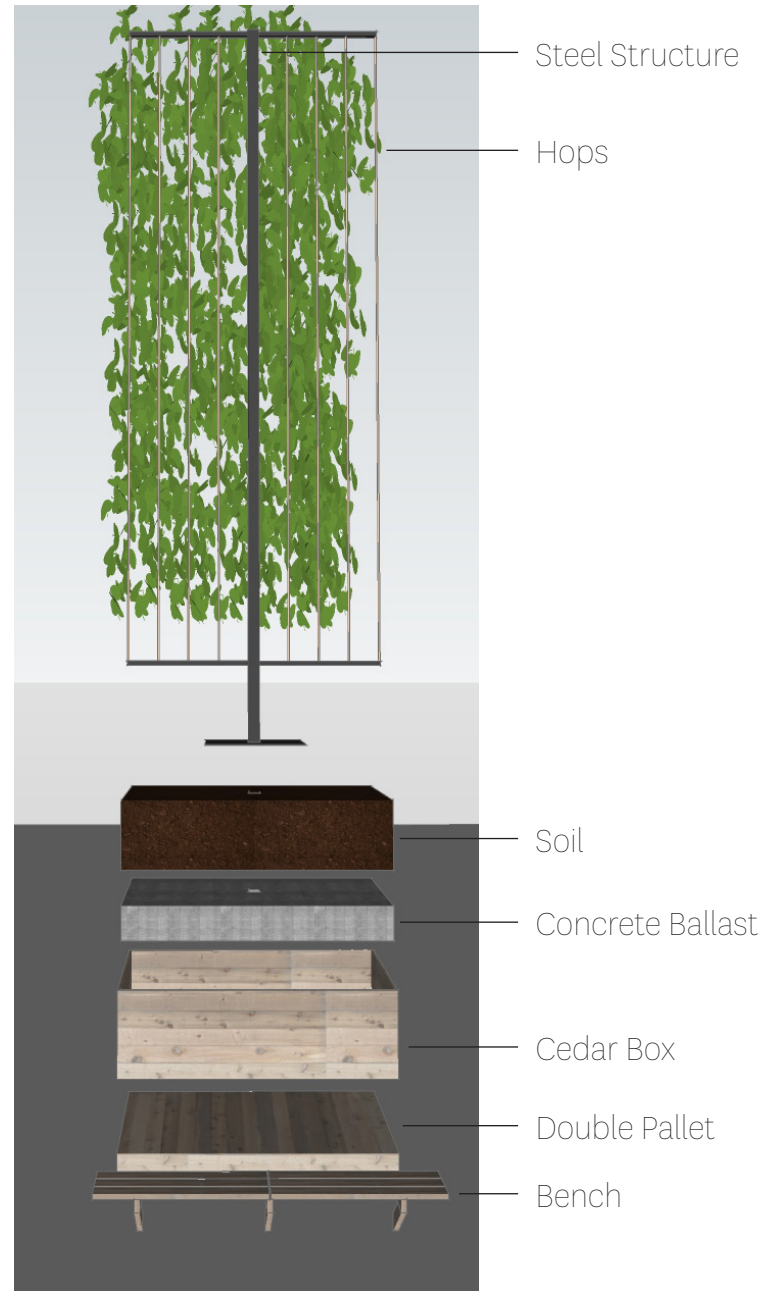
Site Objects

A variety of site objects have been designed to form the vertical connection between the ground plane geometry and the illuminated ceiling. The primary component to this is the raw log pole used across the site. These poles ubiquitous at saw mills across the Oregon landscape are a staple to our economy.

The site also has the unique opportunity to use artifacts left over from when ships were broken down and recycled. Large steel pole bases will be used to support the timber poles that will hold the illuminated ceiling.

Where a row of hops boxes terminates, a pole will be installed inside a similarly proportioned box and planted at its base. The construction of these boxes will allow for a forklift to pick up and move the poles as events require.





**Site Objects**

These hops boxes are the primary feature on the site. They serve multiple purposes, and like the hops box poles can be moved to allow for flexible use of the site.

The base is formed of a double pallet with a cedar planter box. Concrete ballast as needed is applied and then a steel structure to hold the hops support rope. These boxes are 4' x 8', and can each be moved independently of one another. Bench seating is built into the base to create simple, expansive seating throughout the site.

The hops will be of a wide number of varieties, creating an education piece to this important Oregon agricultural product. Informational signage will be included at each box stating the type and characteristics of the above variety.

The on-site brewery will be charged with maintaining these hops, and eventually harvest and utilize them in the beer sold on site. This is a truly unique experience for beer lovers in a city obsessed with good beer.



### The Crane

The Zidell cranes have been an icon since their installation in 1970's. Once used to disassemble ships, one of these cranes will now mark the entrance to a public plaza and music venue. The history of the site will be on full display as you walk under it's great boom and enter the site. Signage for the venue will be hung from the crane on event days.



Jogged fence with intermediate art panels on west property line



Greenway left open and unobstructed on east property line



Shipping container buildings break down the length of the fences on the south and west property lines

### Site Edges

The edges of the site are varied, unique and expansive. The north is bordered by the vertical wall of support for the Tilikum Crossing. Setback from this wall, the site is bordered by a light fence in vegetation, the brewery taphouse, and beverage containers.

The east border is open to the greenway with no barriers or intervention. There is a natural boundary to this area as the earth steeply drops off down to the river.

The west and south edges of the site are formed by a mix of jogged fences, flat fences, and shipping containers to break up the long stretches. The jogged fences are intersected every 20' by panels by local artists.



CONTAINER JOGGED FENCE FLAT FENCE

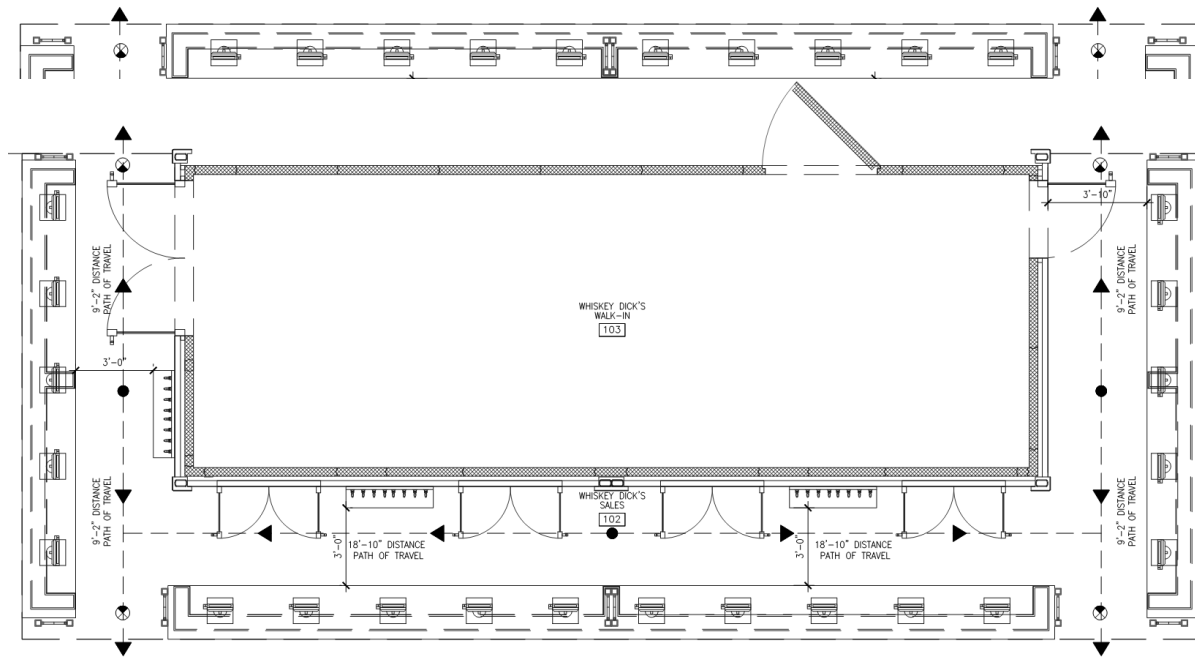
**FOOD AND BEVERAGE**

During events, the venue will need to satisfy the distribution of massive volumes of food and beverage in a quick turn-over environment. In order to do this, and to fit the theme of the site, a number of shipping containers outfitted to serve food and beverage are located throughout the site.

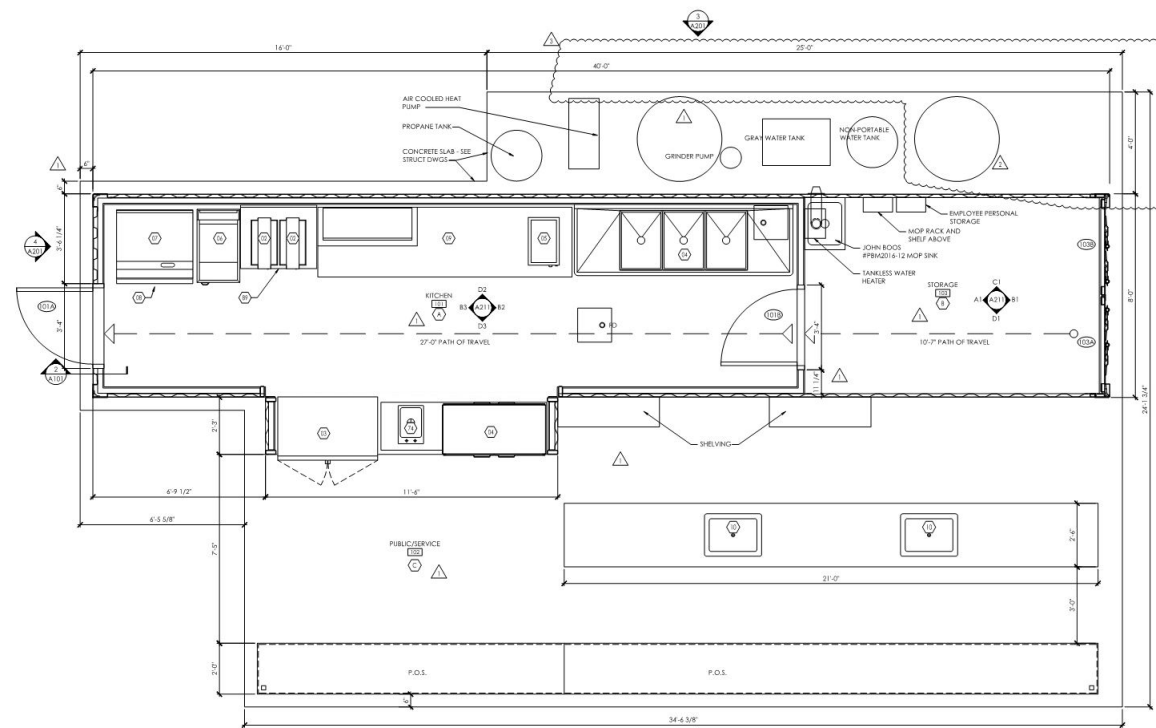
Beverage on containers (not shown) are simple containers with large service windows, service counters and lighting. The kitchen and service containers include a refrigerator and storage, full food preparation equipment, pass-through window, service counters, lighting, plumbing, and covered area.

One large beverage service point (shown) is located in the middle of the site and allows for rapid large volume distribution.

All of these containers will be closed and secure on non-event days.

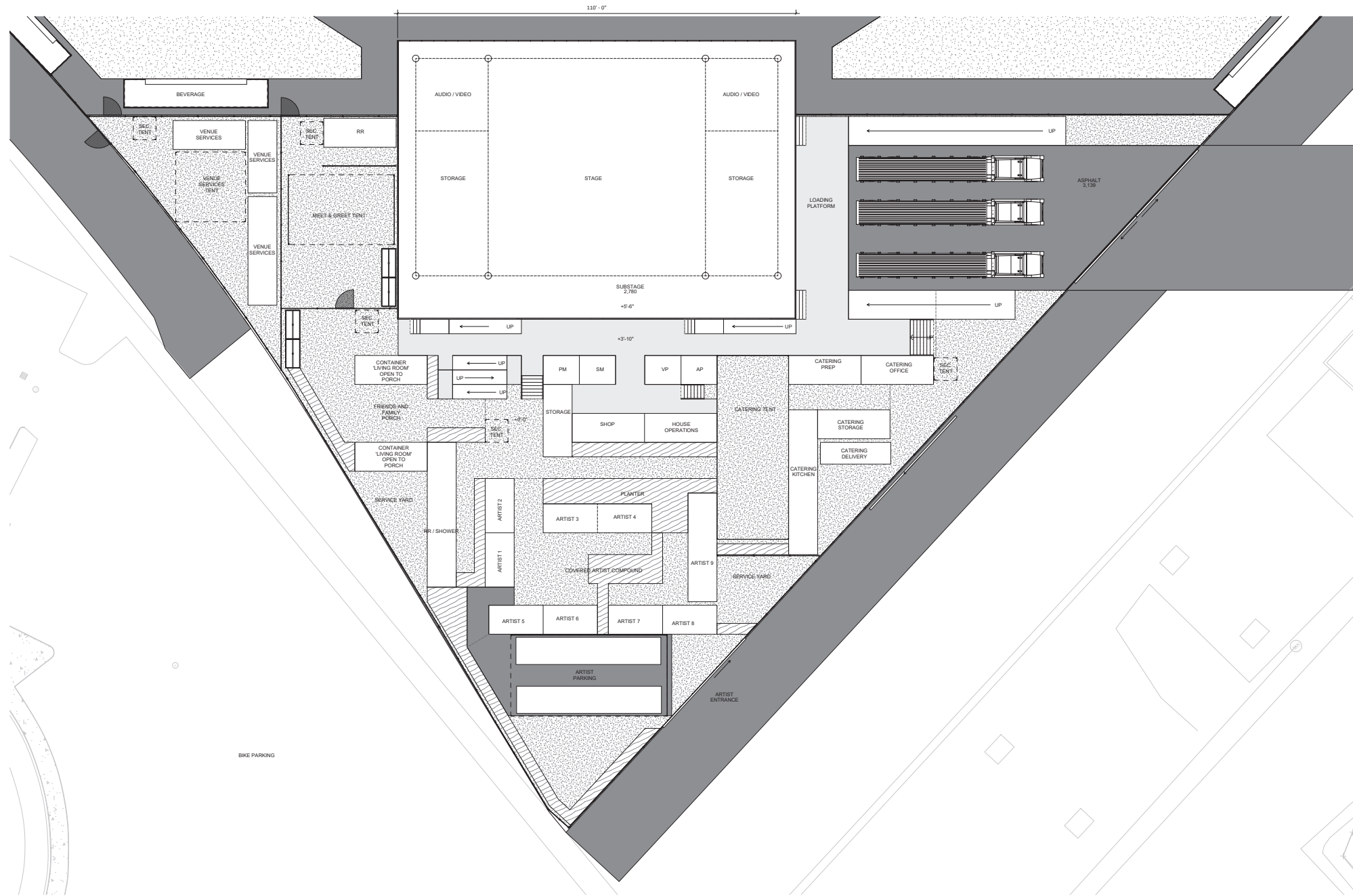


Beverage Service



Typical Kitchen Plan





### Stage and BOH

The stage and back-of-house areas of the venue are a complex, highly functional maze of shipping container buildings providing the venue operators and artists with everything they need to put together an amazing show.

Starting on the south side (right), all venue equipment arrives on trucks and is loaded onto a sub-stage and then moved in a temporary storage holding area. West of the receiving area is a catering compound to feed the production staff and artists.

On the north side of the stage are venue services offices, meet and greet areas for fans, and a friends and family living room area.

The artist compound is in the center and protected by layers of security and a wooden structure ceiling providing peaceful filtered light.

Adjacent and exterior to the compound are access paths for emergency services and deliveries.



### STAGE CONFIGURATION

The Five Points Amphitheater stage, completed in 2017, is a recent example of a Live Nation outdoor concert venue and characteristic of the stage proposed for Zidell Yards



VENUE: STAGE + BACK OF HOUSE

**TYPICAL BACK OF HOUSE**

Back of House typically consist of trailers connected by a low mezzanine and tent structure.

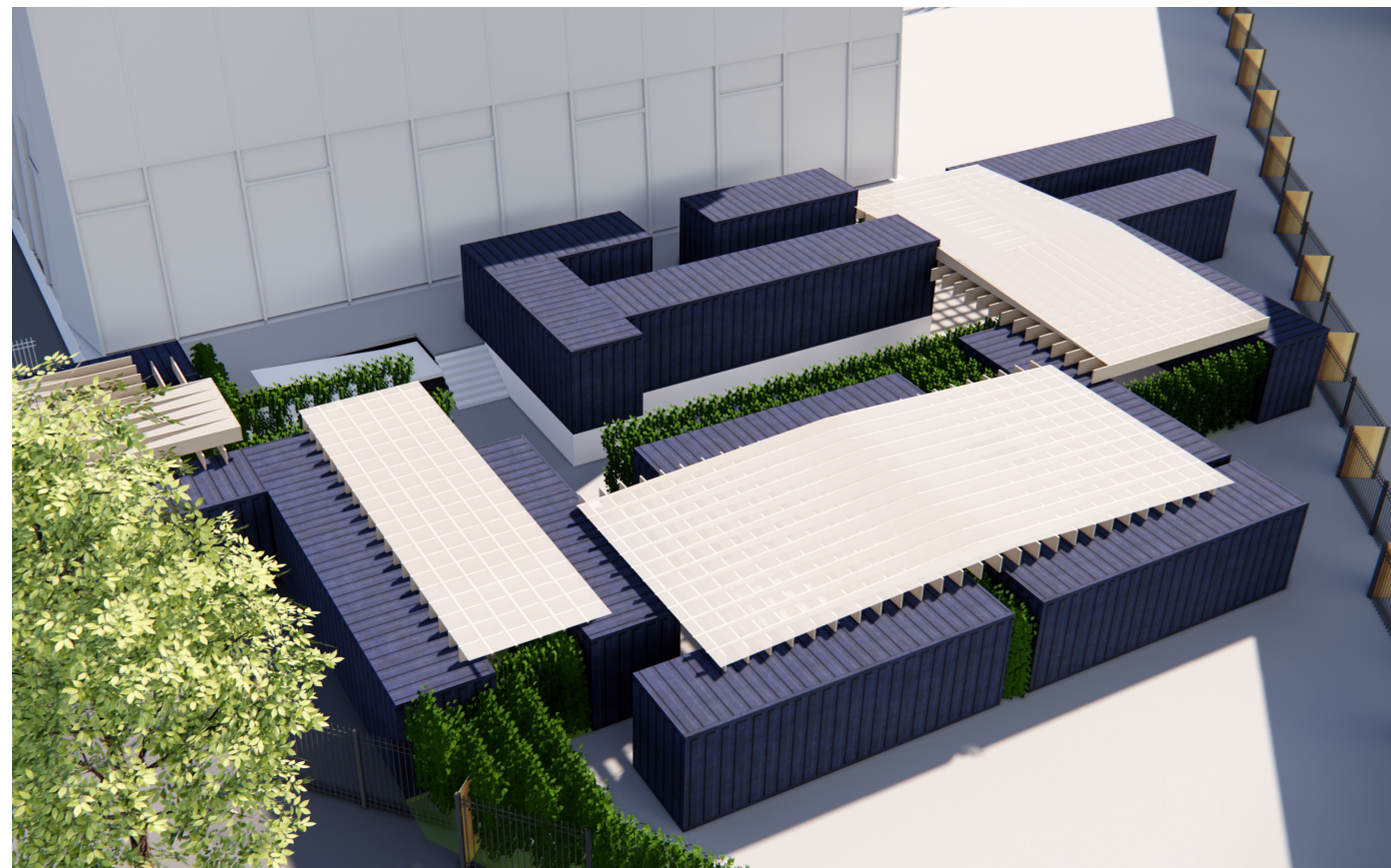


**VENUE: STAGE + BACK OF HOUSE**





Aerial view of the artist compound



## Artist Compound

The proposed back of house/artist compound is composed of 15 shipping containers in various configurations covered with a timber structure and intermixed with hop planters. All of the containers are located on the ground plane except the operations area, which is elevated to the sub-stage level.

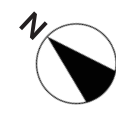
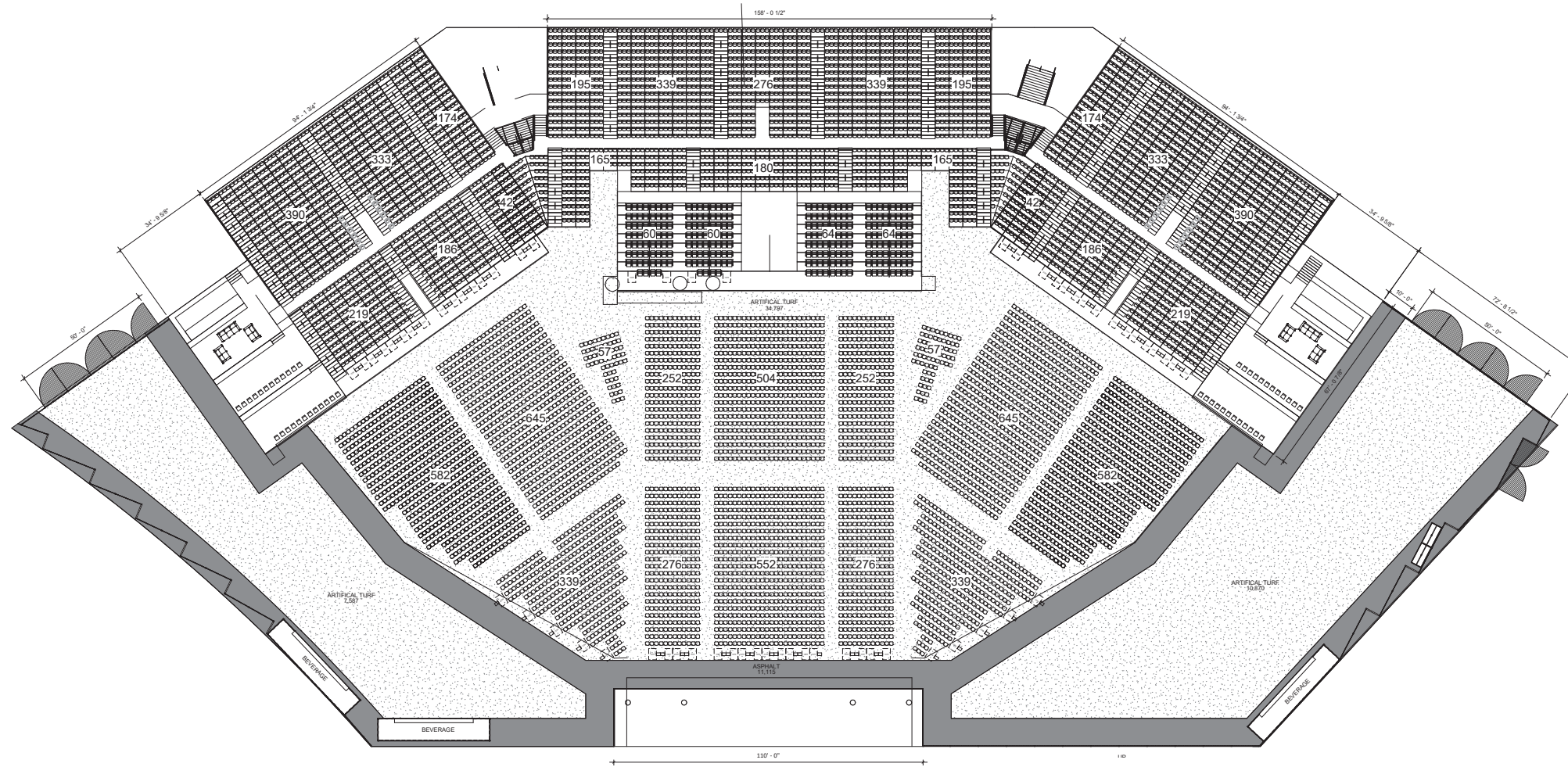
The catering containers are programmed with a full kitchen, cold storage, offices, and prep space. These are fully furnished interiors to a food grade specification. The kitchen serves on-site staff as well as the artists.

The operations area has offices for stage managers and productions managers. There is also a shop and storage for the various production elements.

The largest space is the artist compound which contains 10 units for artists to use while they are on site. These units contain bathrooms and showers. The artist compound can be accessed from a secure artist bus parking area directly behind the compound.

There is a large container designated specifically for showering and restrooms to be used by on-site staff and artist employees.

The last area is a friends and family guest area. This is a large living room space that artists can invite guests to, but is separate from their private space.

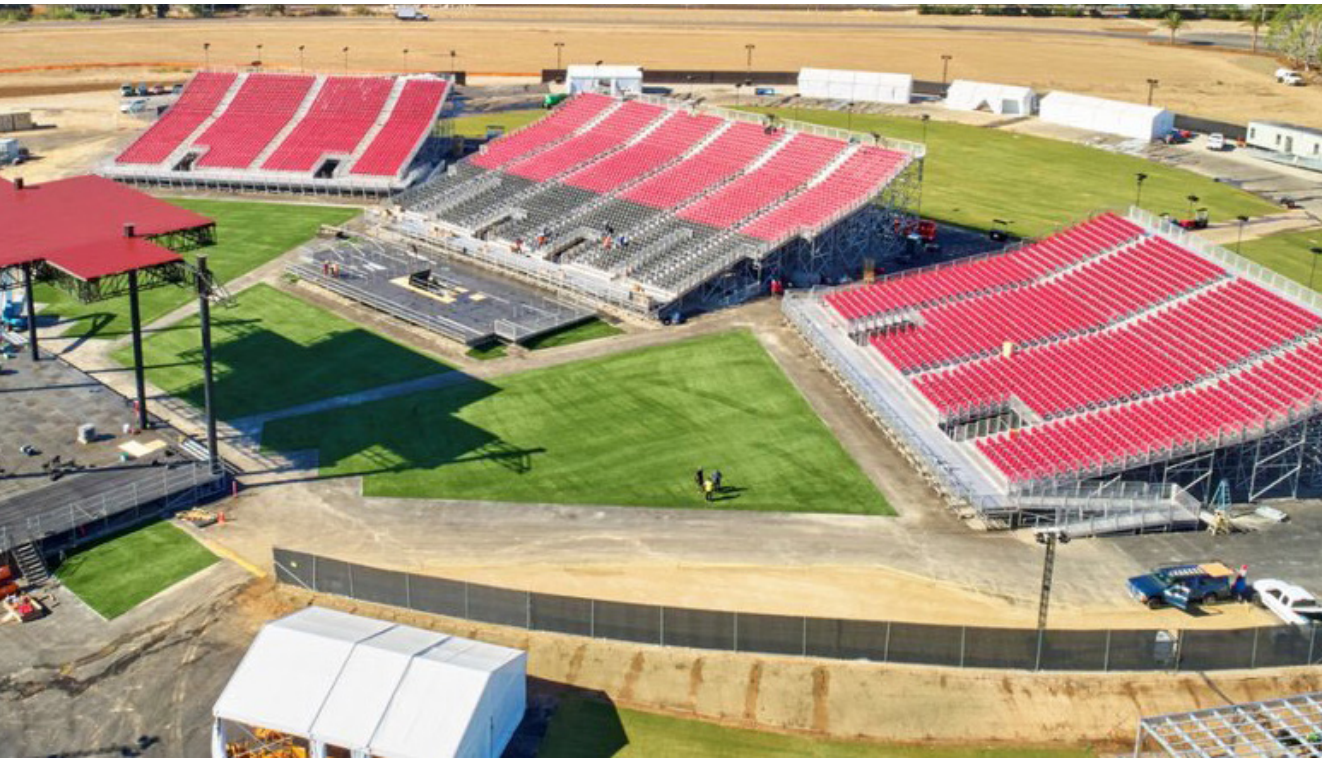


## Seating

The venue seating arrives at the site as a prefabricated kit of parts, ready to be assembled. The forward-most section are loose chairs, and flexible for various event types. The mid-ground level section are non-flexible seating on a track system. There is a central VIP section front and center as well as two VIP living rooms flanking the raised seating.

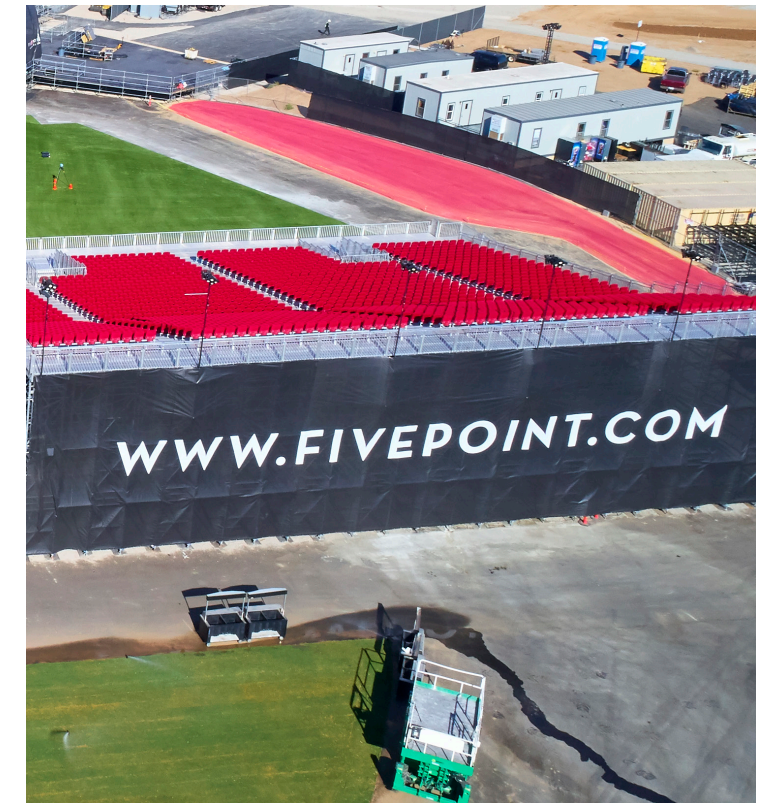
The raised seating is 30 rows deep with all venue restrooms located underneath. From this vantage concert-goers will have an excellent view of the stage as well as the west-hills and south waterfront beyond.

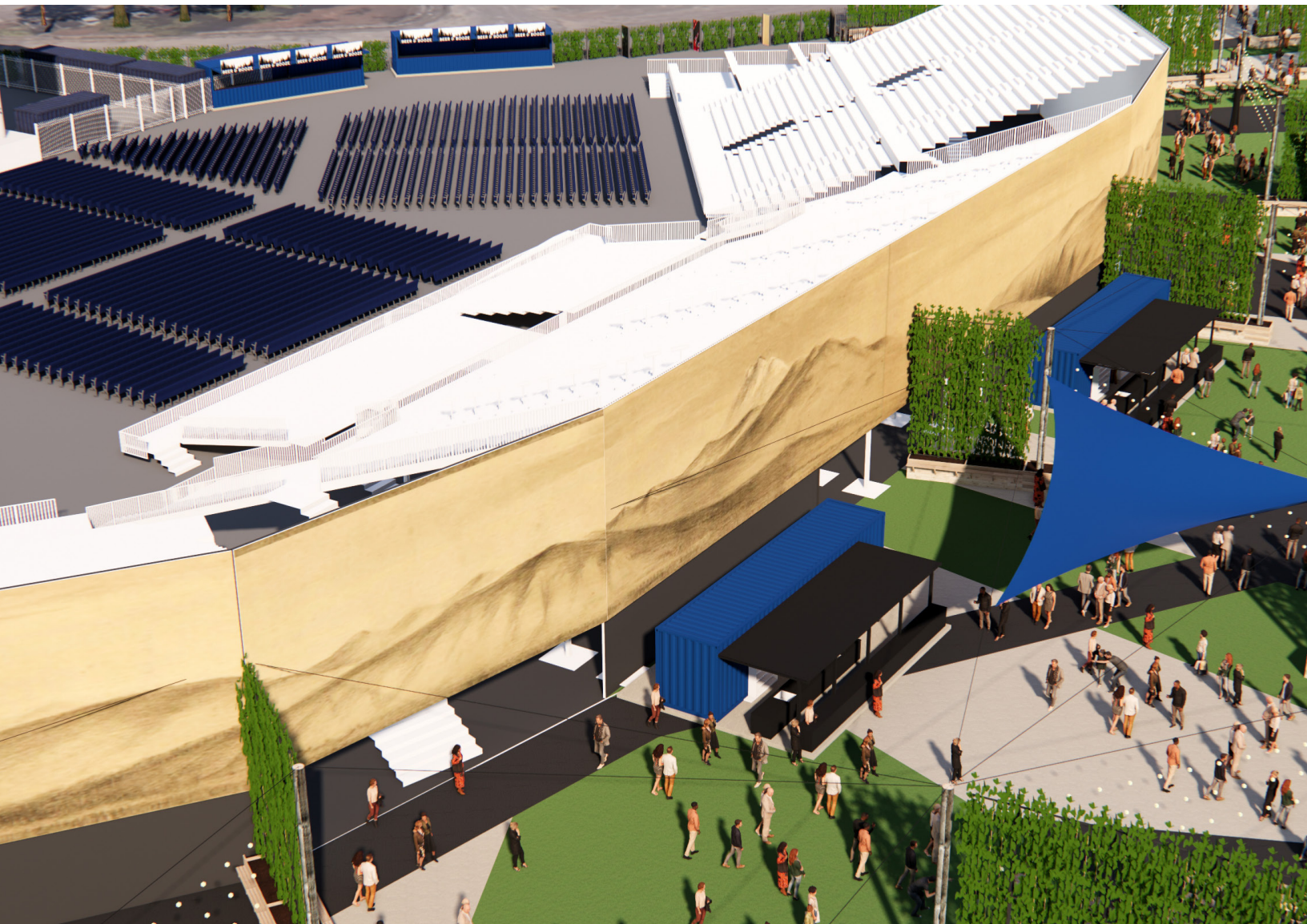




### Seating

Seating structures typically display venue branding on the back of the grandstand. This area serves as a backdrop for the rest of the venue and serves as a visual identity for the project especially during the day.





### Seating + Art

Grandstand to display a commissioned work of art emblematic of Zidell Yards and Portland



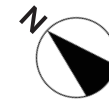
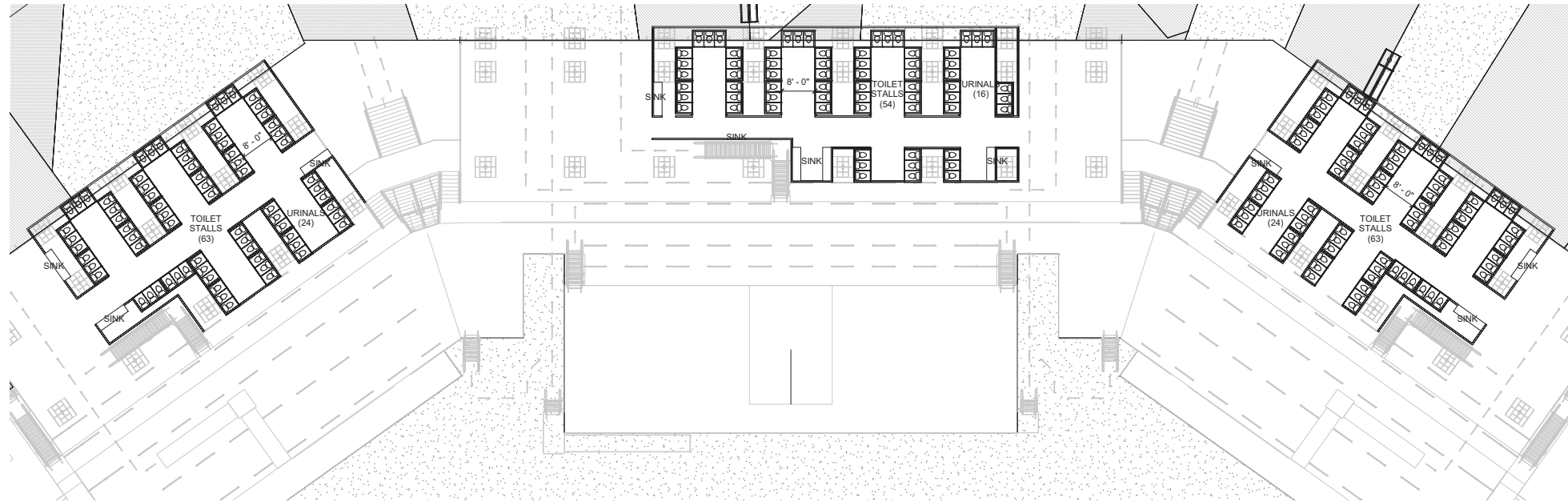
VENUE: SEATING

**PROPOSED RESTROOM SYSTEM**

The restrooms for the venue are an integral part of the operations that must handle high volume in short periods of time. For this purpose, the Sanitrax system is an ideal fit. The restroom units are portable and arrive prefabricated on a flatbed truck. They are placed on-site and hooked up in line to a central collection system.

Each of the three areas is self contained with its own pump and storage system. All waste is removed and deposited into the site adjacent sewer main. These restrooms are a simple longterm solution to temporary intermediate use the venue will see.

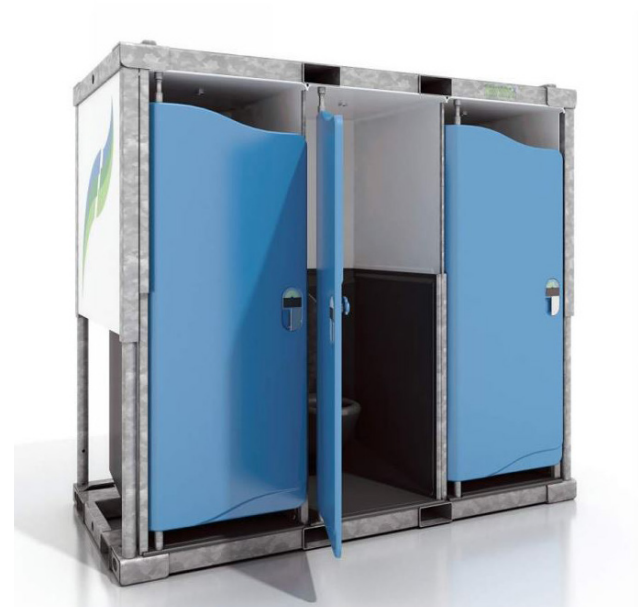
Additional limited restrooms will be made available to the public for non-event days and the brewery tapouse will have it's own plumbing system.



SANITRAX URINAL



SANITRAX WASHBASIN



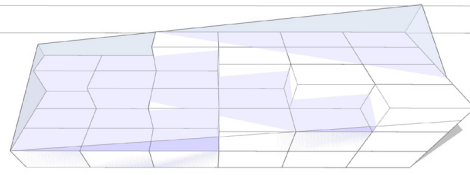
SANITRAX TOILET

### Standard VIP Accommodations

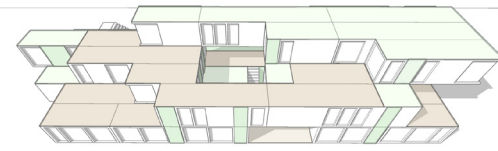
VIP accommodations typically consist of open air tent structures and are often only accessible during events



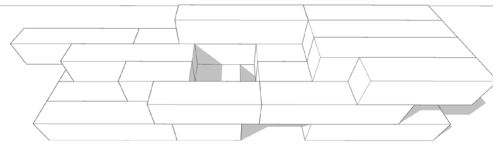
STANDARD VIP ACCOMMODATIONS



**Massing -**  
Follows the diagram of the Tilikum Crossing.



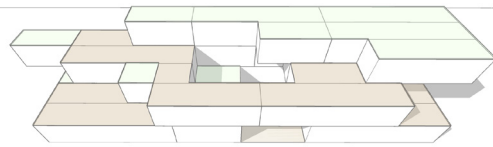
**Vertical Circulation -**  
Primary vertical circulations happens in the exterior open core.



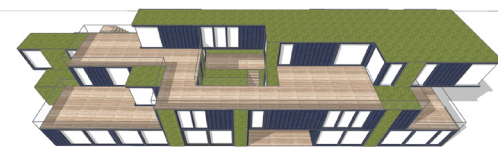
**Container Blocks -**  
Original 20' small blocks are reconfigured into larger sizes for efficiency.



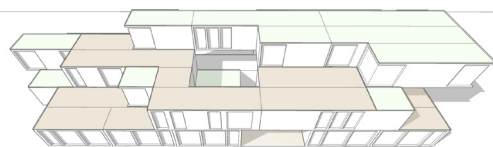
**Guardrails -**



**Roof -**  
Horizontal planes are covered in deck or green-roof.



**Materials -**  
The shipping containers are only painted on the exterior, plants will grow over the structure.



**Openings -**  
All openings in the containers are based on the short end module of 7'



**TAPHOUSE CONCEPT**

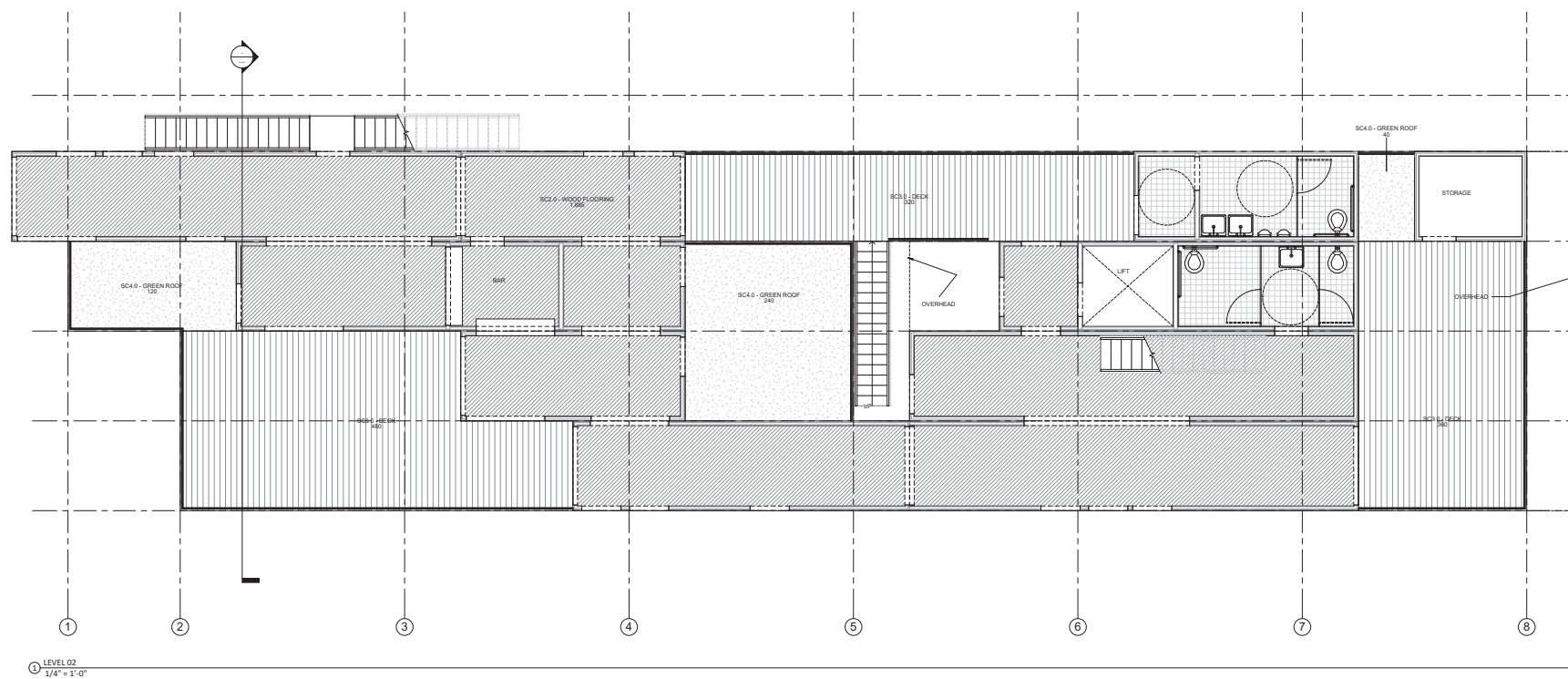
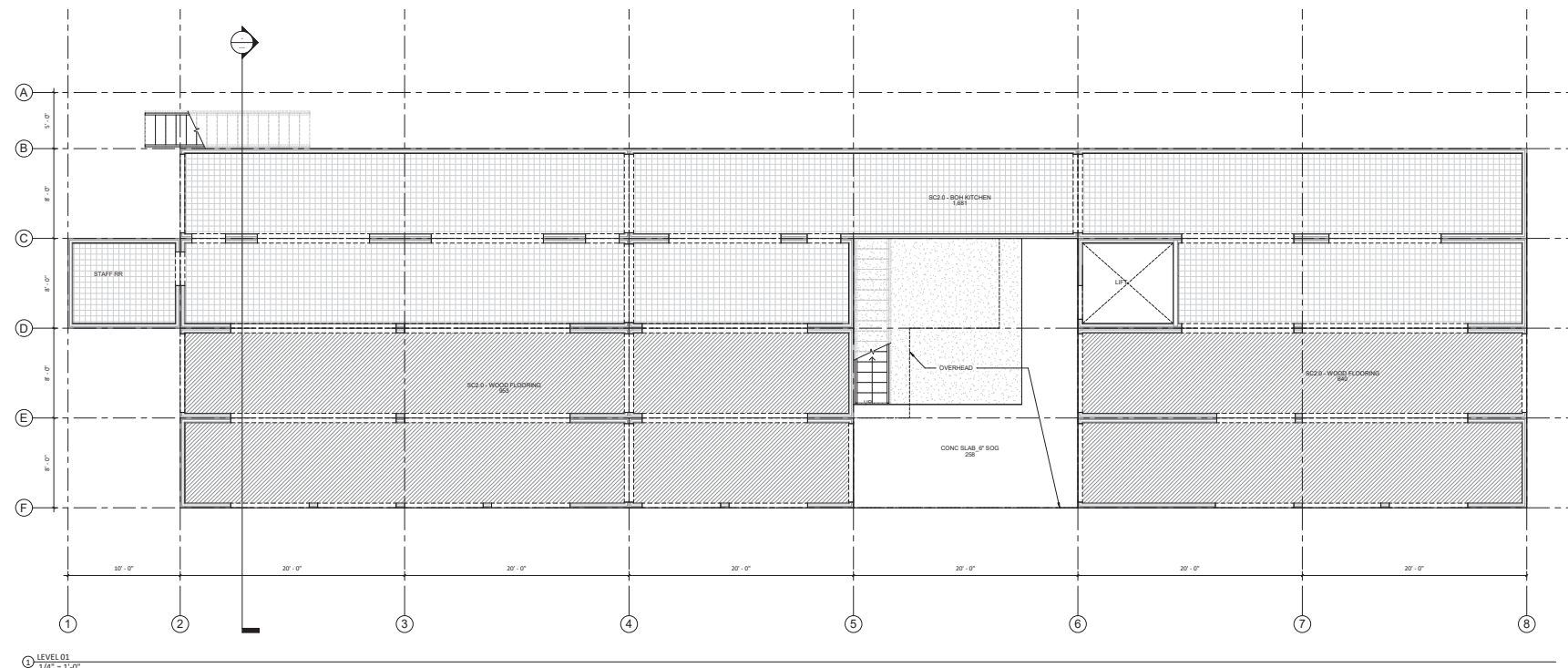
The Brewery Taphouse explores a larger scale building fabricated from the shipping container building block. Given the flexibility of this 'material', we pursued an iterative process of pushing and pulling blocks to carve out spaces and create unique vantages. This building also follows the larger plaza concept of allowing nature to overtake the industrial past.

Once we had a few ideas for ways to create smaller, human scale spaces with the larger mass, we started to organize the mass around the idea of it's relation to the Tilikum Crossing - the containers form a massing that flows from high to low that orients to the bridge supports. This directs the lower viewing areas down towards the plaza and the higher views in the back towards the bridge, creating a visual relationship.

Decks and green-roofs are articulated across the exterior horizontal surfaces. Openings on a module of the 7'-0" container opening are used throughout. Primary vertical circulation is located in an open exterior core, and additional egress is located at the rear of the building.

The materials for this building are intended to be humble, referencing the site's history as an industrial point of global commerce. The shipping containers are painted, but left exposed. The interior and exterior decking are the same material, and let to weather - they are not precious. The green-roof will feature many of the same species that can be found on the riverbank below, extending the site ecology into the architecture.





### TAPHOUSE PLANS

The Brewery Taphouse is operated by a local brewery, is made from shipping containers, and is open to the public most days of the year. The design features large sweeping exterior decks, green-roofs, interior kitchens and restrooms, and can be occupied by several hundred.

The functionality of the taphouse varies from event days to non-event days. On event days, the entire first level is opened to allow for queuing in front of the large counter. Food and beverage are prepared and served in a rapid manner and guests are directed out the sides to enjoy in the open plaza space. The second level is a designated VIP area on these days with exclusive access to the views and table service.

On non-event days, the entire building is operated as a taphouse with the lower level queuing area becoming a large dining room. Given the prime location on the waterfront, the breathtaking views and the high quality food and beverage, we expect this taphouse to quickly become a Portland destination for locals and tourists alike.



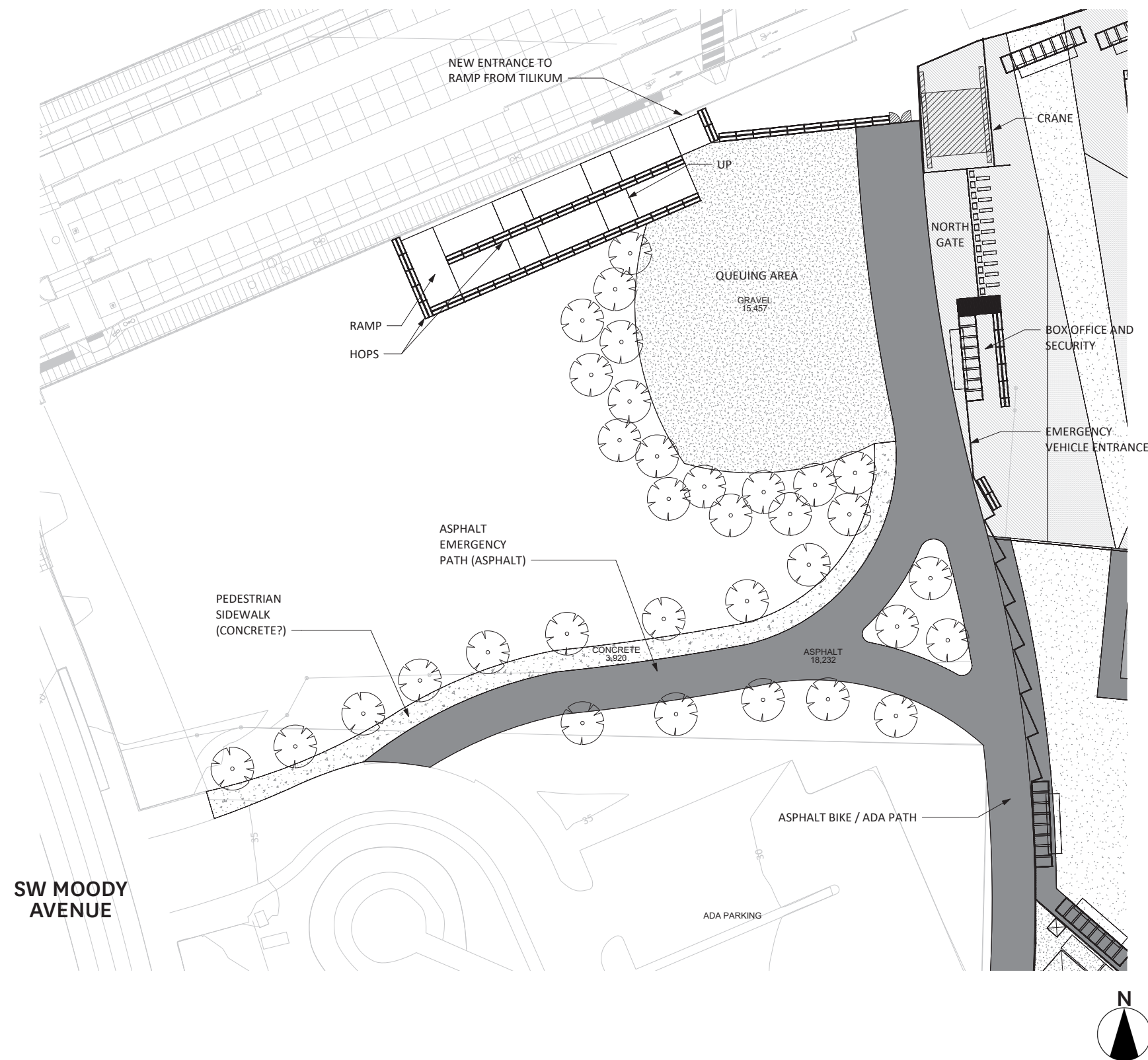
**NORTH GATE**

The North Gate is the primary entrance to the site on event days and the only entrance on non-event days. The North Gate can be accessed from both SW Moody Avenue and the elevated intersection of Tilikum and SW Bond Street.

The elevated Tilikum Crossing public transportation hub is currently enclosed by a guardrail. We are proposing the removal of a section of this guardrail to give access to a large switchback ramp. The ramp structure will be primarily scaffolding, with a non-slip decking material applied to the top. The ramp will be surrounded and split by growing hops structures - the same as which will be located within the venue. Traveling down the ramp will feel like descending into a garden of hops.

An access path will be created from the 3030 SW Moody Avenue driveway. It will split from this drive and provide access to the North Gate for pedestrians and emergency vehicles. The path will be made from asphalt and concrete and will feature buffering landscaping.

The queuing space in front of the gate is covered in a 1/4 minus gravel, applied directly over the existing earth. ADA paths will be provided from the parking lot to the south.

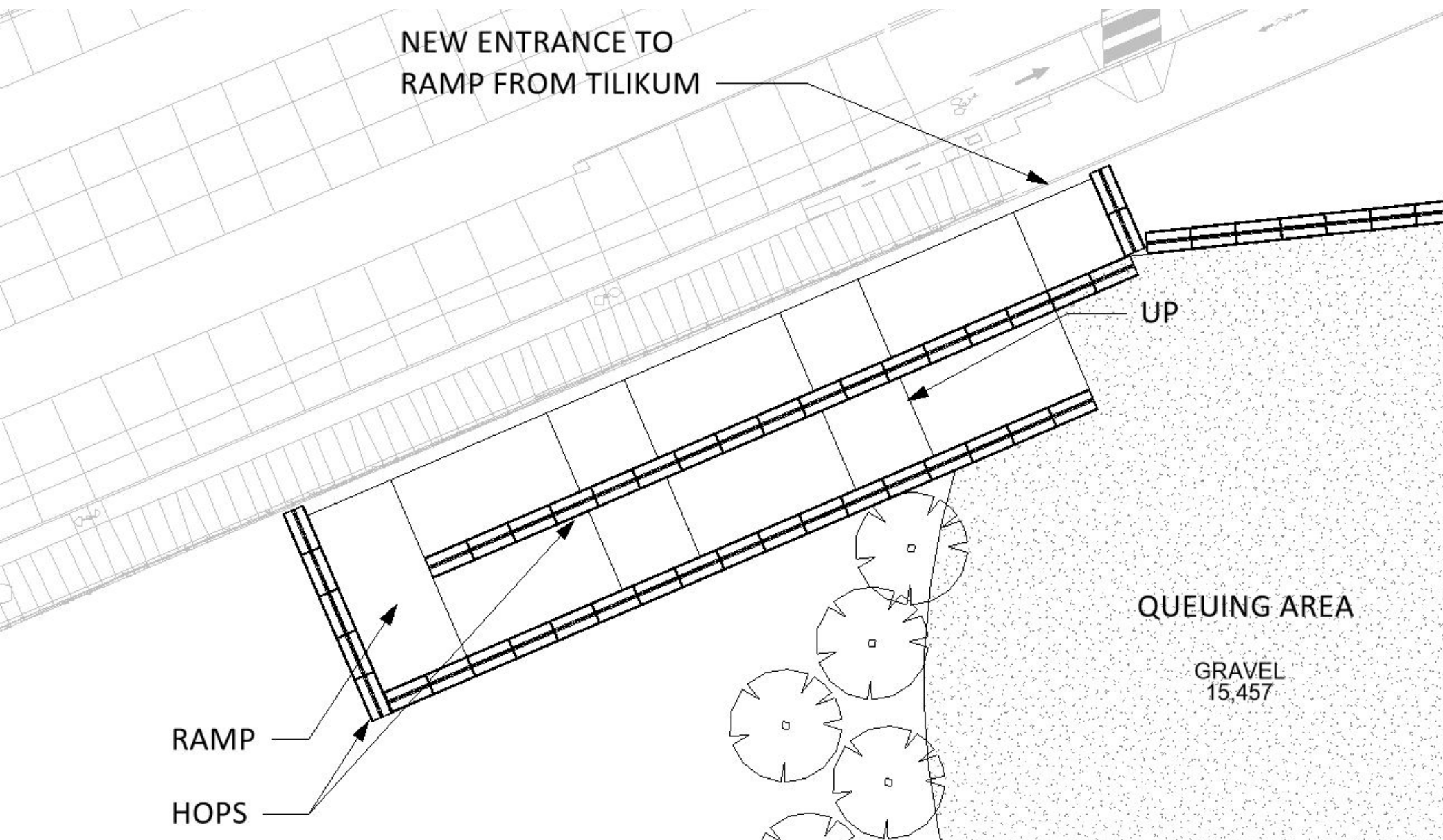


NORTH GATE

### ACCESS RAMP

The Tilikum Crossing is expected to be the primary means of site access for fans. In order to get fans from the bridge elevation down to the plaza elevation, a large ramp will be constructed directly adjacent.

The large ramp will be built from a scaffolding system, however the scaffolding will not be visible. Hops boxes like the ones used on the site will divide and surround the ramp - as one descends to the site, the hops become taller - they envelope you as you descend. The floor of the ramp will be covered in a paver to give the illusion of something more permanent.



NORTH GATE: ACCESS RAMP

**SOUTH GATE**

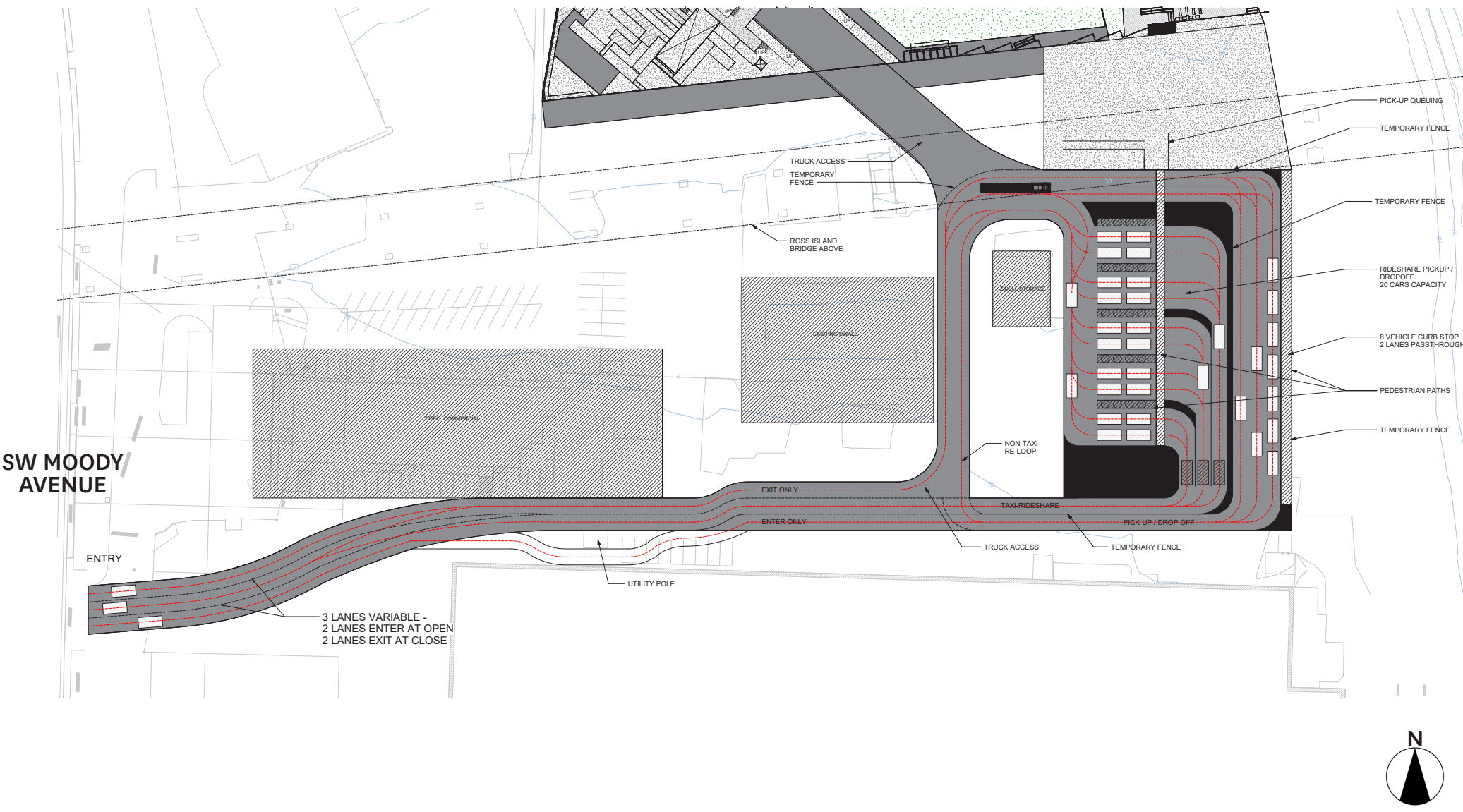
The South Gate covers a large area between the south extent of the venue and the Zidell Barge Building. This area is used by production vehicles, emergency vehicles, and pick-up/drop-off - all on event days only.

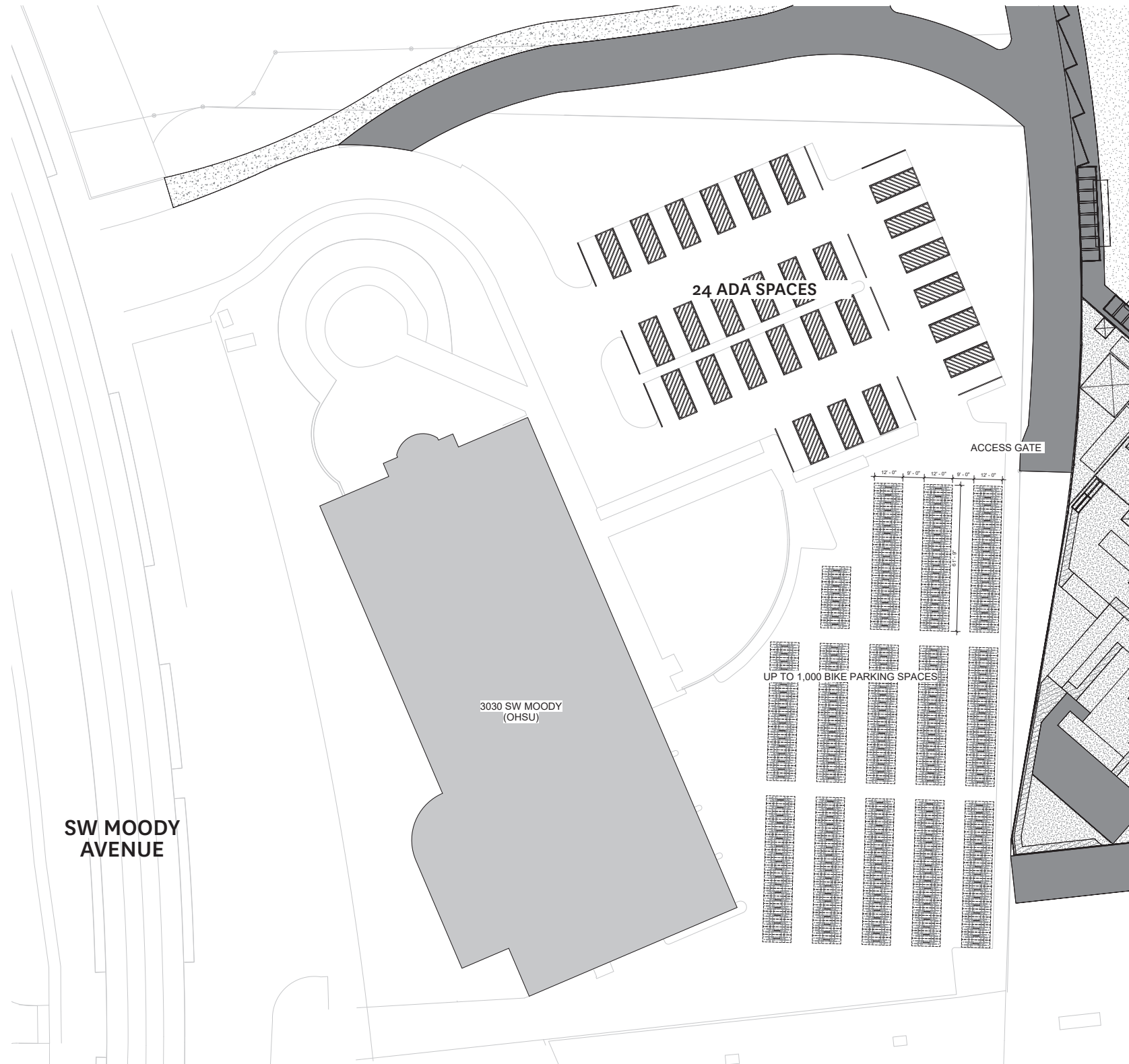
The site is currently almost entirely paved with asphalt, which would remain and be repaired as necessary. All traffic flow guides would be a combination of ground paint and stanchions places on event days.

Access to the site from SW Moody would be controlled on event days, allowing for a steady stream of drop-off/pick up. This area has been pushed to the further possible location on the site, allowing for vehicle queuing to occur on the property, and off of SW Moody.

All vehicles would enter on two lanes, and then be sorted by ride-share or personal vehicle. Ride-share companies will be required to use a first-come first-serve system, preventing the necessity for customers to find specific vehicles. This system is designed to minimize pedestrian crossing of vehicular paths.

At the end of events, the number of lanes exiting switches from one to two and is again managed by a traffic controller to allow cars to exit in both directions.





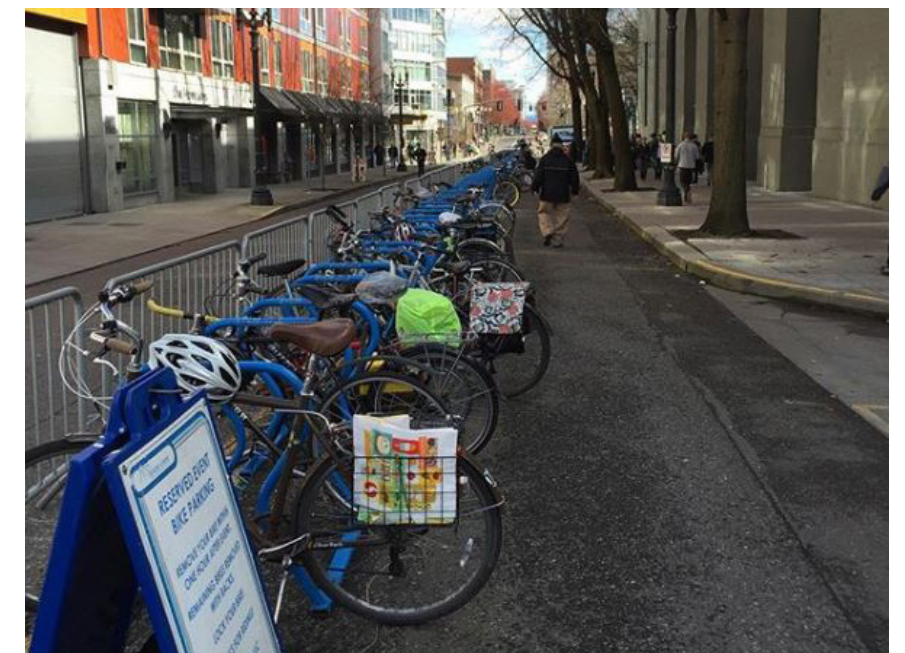
### ADA & Bike Parking

The ADA and Bike parking area will be utilized only for events. No structural changes will be made to the parking lot. All additions of bike racks, way-finding, and ADA marking will be temporary in nature.

There is planned van-accessible parking for 27 vehicles within the northern section of the 3030 SW Moody parking lot. This parking can be accessed with the 3030 SW Moody Driveway, and will be managed by traffic control.

Bike Parking is primarily accessed via the Tilikum bridge. Cyclists will use the ramp available there and then walk their bikes along the paved access path to the bike rack parking area. The temporary bike parking racks will be similar in nature to what is used at other events around Portland, like Timbers and Thorns soccer games.

There is an existing access gate on the east side of the parking lot that will be used by disabled and cyclists. Though there is currently a landscaping strip, a temporary ramp will be provided to meet all accessibility requirements and prevent the need for backtracking towards SW Moody.



ADA & BIKE PARKING



VIEW FROM TILIKUM CROSSING

## GREENWAY

The site's most remarkable amenity, the adjacent greenway will be left largely untouched by the new venue space. Additional landscape will be introduced as required within the 100' setback.

This stretch of riverfront has a unique history - a location of resource gathering for Native Americans, an industrial scrapyard, and most recently an ecologically restored habitat. This is a sensitive landscape and is consistently maintained.

There is no planned barrier between the edge of the venue and the greenway setback. Though it is possible for occupants to explore the area of the setback, we do not anticipate public occupation of the restored riverbank. This area is steeply sloped and densely planted.

On non-event days, site amenities will increase traffic to this spectacular stretch of riverfront, activating it and creating a stewardship towards this special place.



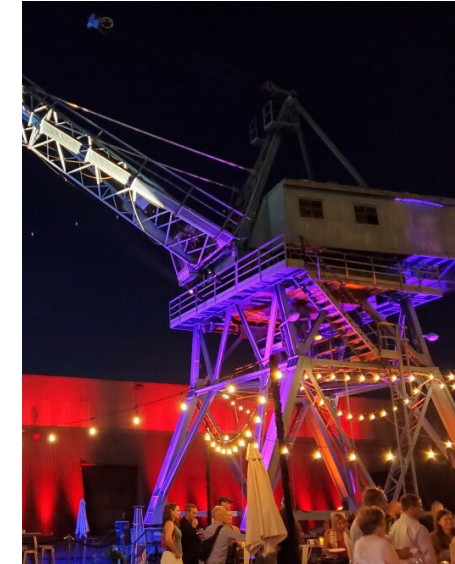
PUBLIC PLAZA

Continuous commercial string light suspended from three independent horizontal tensioned aircraft cables through plaza. Lamps spaced 5'-0" on center, stacked in three rows 2'-0" on center. Bottom of lamps at +15'-0" above grade.



PUBLIC PLAZA

Pole mounted, fully shielded flood luminaire to illuminate circulation where needed.



CRANE

RGBAW and RGBW exterior rated architectural luminaires employed as accent illumination of industrial artifacts on site.



BACK OF HOUSE

Utility luminaires for general lighting at back of house areas.



ENTRY GATES & PARKING

Full cut-off LED area luminaires at entry gates and parking area.

**SITE PLAN**

Live Nation at Zidell is both a music venue and a public plaza. The primary entrance is located in the northwest corner - the North Gate. This entrance is conveniently located adjacent to many modes of public transportation including the Portland Streetcar, MAX and buses. This area is also adjacent to accessible parking and bike parking.

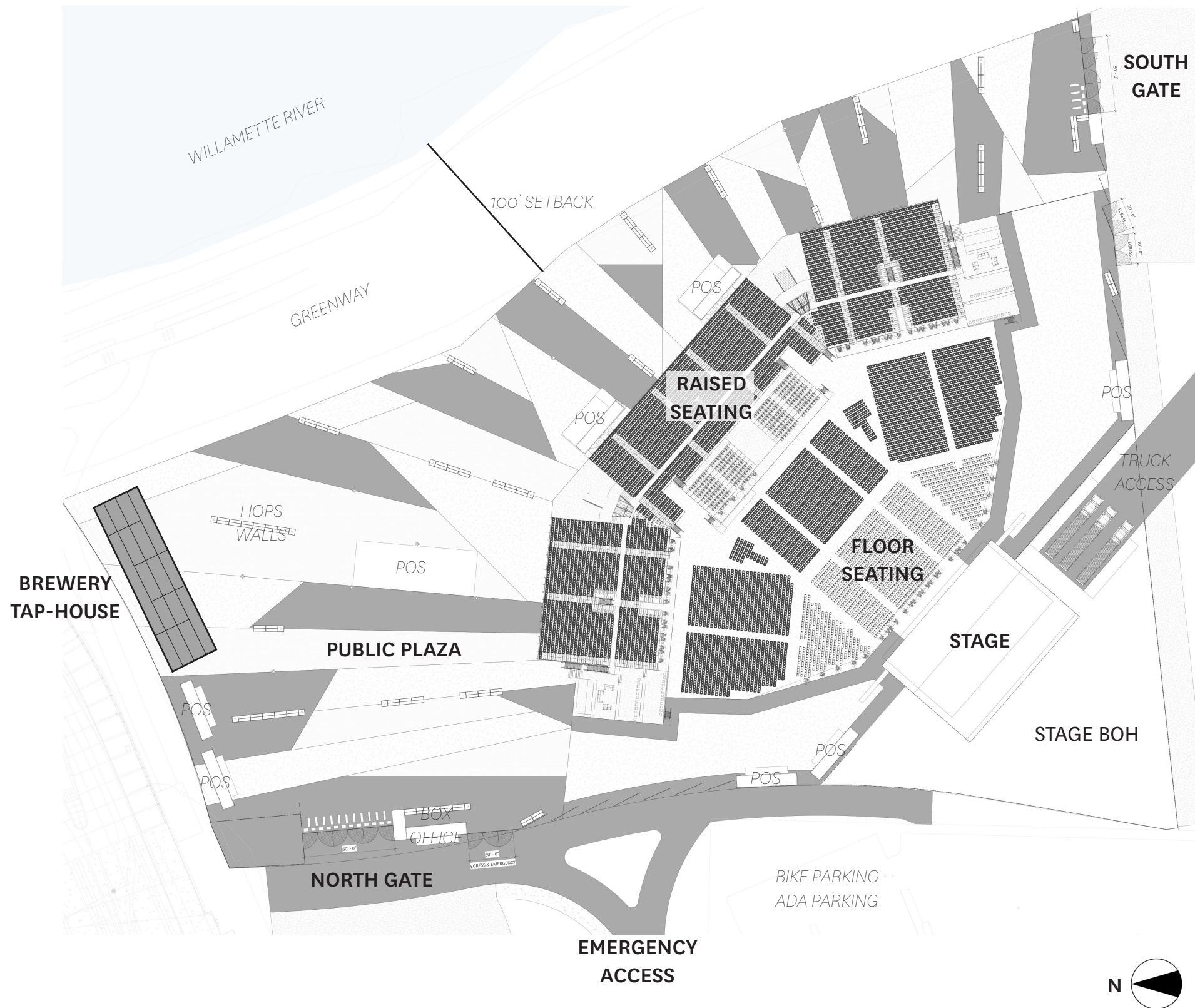
The plaza space encapsulates the music venue and will be accessible to the public year round. Views are directed out to the Willamette River, and to the surrounding bridges. The geometry shown is illustrating three different ground materials, all ADA accessible. In between the layers of the ground materials are large semi-transparent walls made from climbing vertical hops walls.

At the ends of the hops walls, tall poles are connected by steel cables, which support lights, illuminating the site at night.

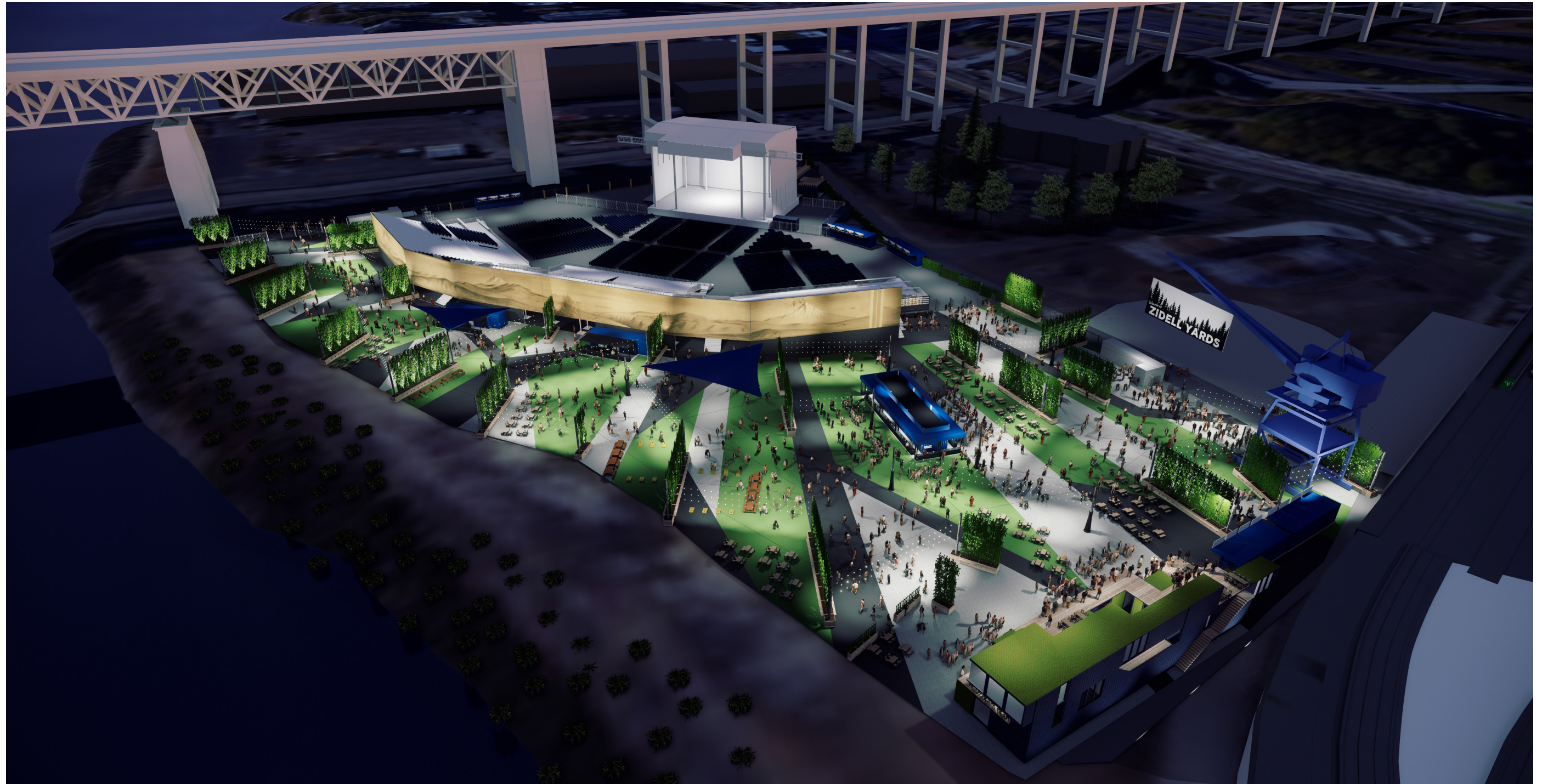
On the north end of the site, a brewery tap-house will serve customers both at events and on non-event days - activating the site year-round. This three-level structure is made from shipping containers, similar to all other structures on the site.

The site is fenced in on the west and south sides by a combination of vine-covered barriers, backs of shipping containers and local art.

Access to the music venue from the plaza occurs through the underside of the raised seatings and on the adjacent sides. The venue space is closed to the public on non-event days.



**SITE PLAN**



AERIAL VIEW TO THE SOUTH





AERIAL VIEW TO THE NORTH



Pedestrian View