



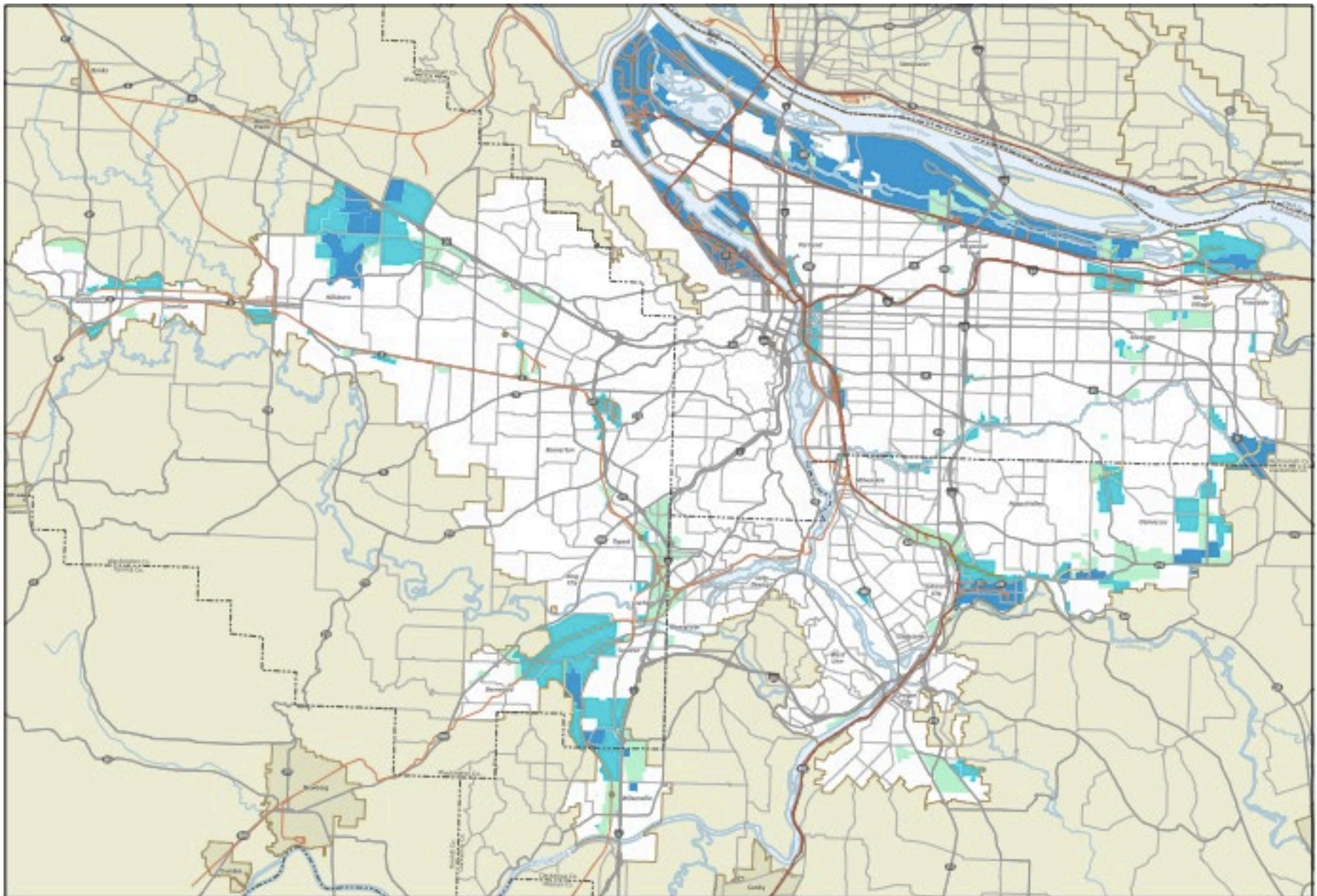
PROSPER
PORTLAND

Building an Equitable Economy

Industrial Site Readiness Program

- Supports development of significant industrial sites
- Performance-based tool
- Provides state income tax reimbursement to local government





Title 4, Industrial and Other Employment Areas

October 2014

0 1 2 4 miles

This document may be used for informational purposes only. It is not intended to be used as a legal document. Metro is not responsible for any errors or omissions. Metro is not responsible for any damages or losses resulting from the use of this document.

- Employment areas
- Industrial areas
- Regionally significant industrial areas
- Proposed main roadway routes
- Proposed road connections
- Mainline freight
- Branch line freight
- Rail yards
- County boundaries
- Urban growth boundaries
- Neighboring cities

Key Components

- **Site**
 - Industrial use
 - Located in an area designated by Metro as a regionally significant industrial area
- **Public Sponsor**
 - Local governments apply or act as sponsor for private sector employer/property owner
- **Traded-Sector Employer**

QUESTIONS?