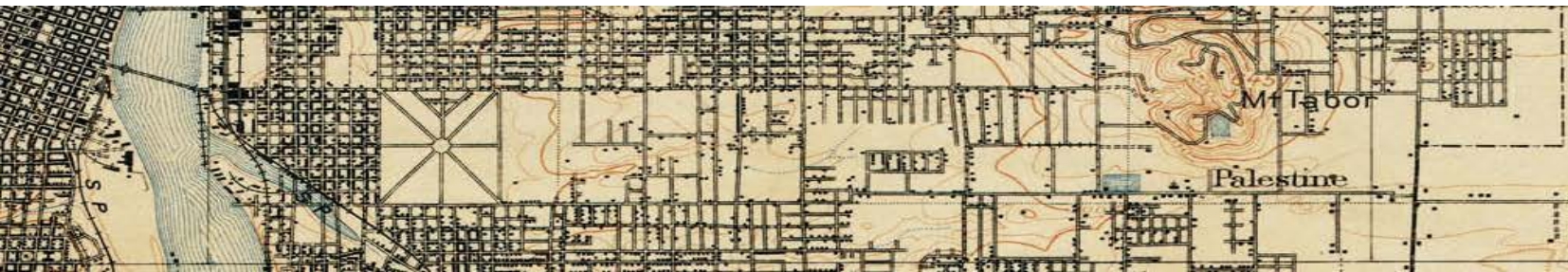


PORTLAND DESIGN COMMISSION



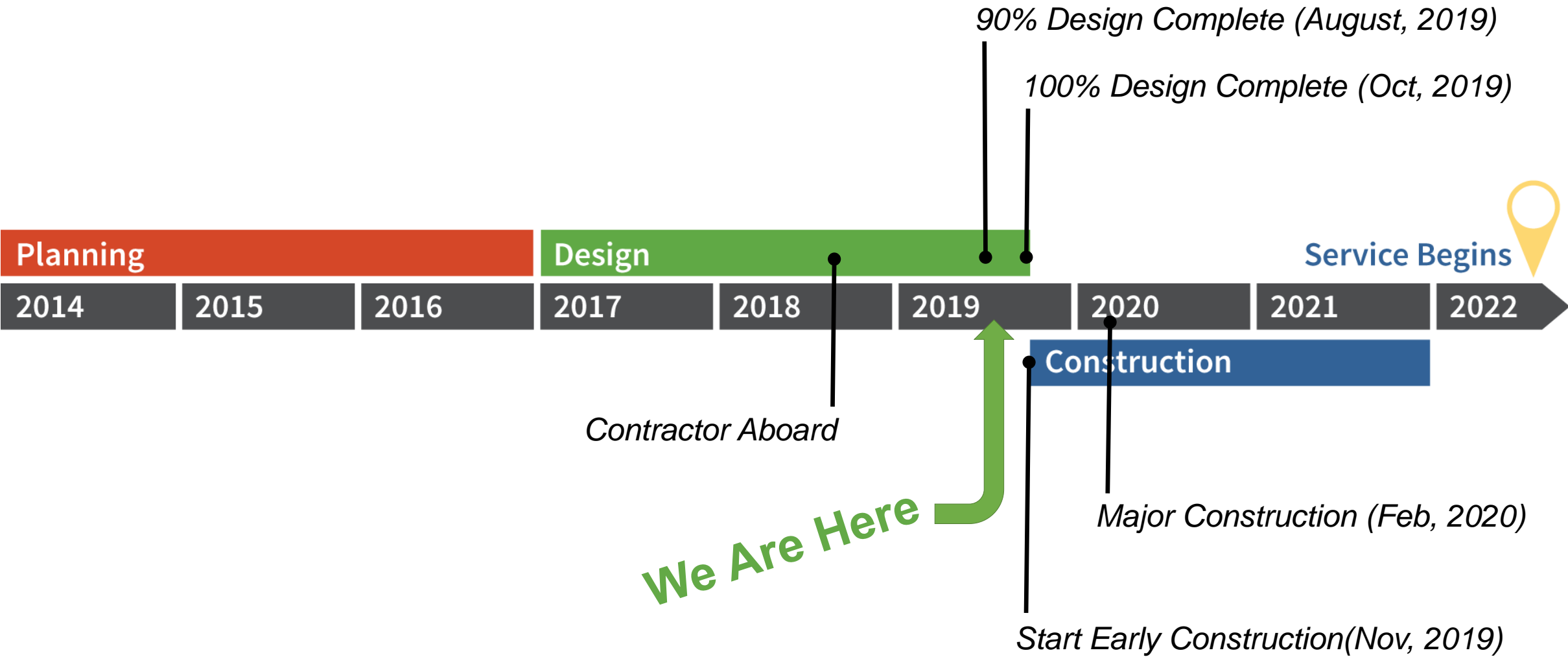
Caitlin Reff, Teresa Boyle (PBOT) Jesse Stemmler, Bob Hastings (TriMet)

Division Transit - Corridor Map



- Federal Small Starts Project (Local Funding Match)
- New 42 stations total; 35 in Portland
- More than 70% of transit users will have service near current stop
- 95% of existing riders will have service within 3 blocks of current stop

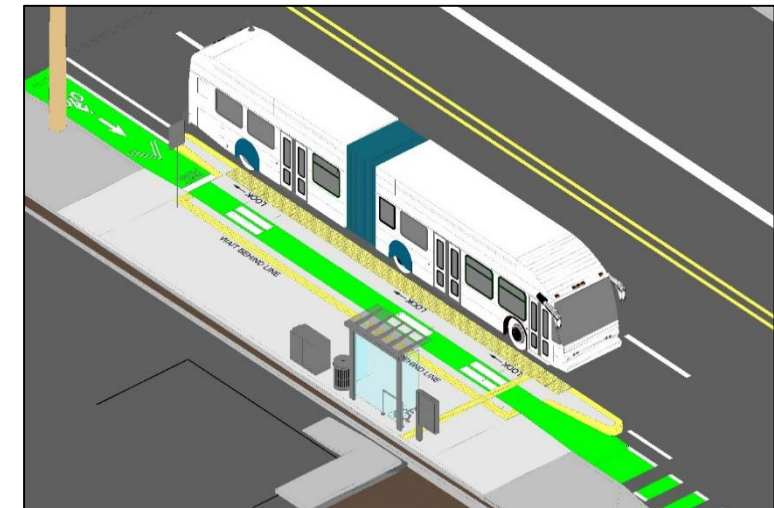
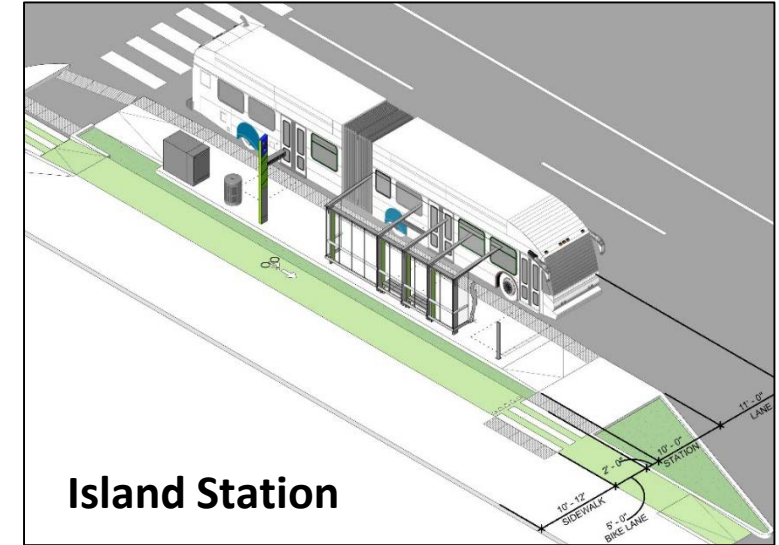
Project Schedule



Project Updates

- Anticipated Federal Funding in Fall 2019
- Close coordination with ODMMSP
- Early utility work starts November 2019
- Major construction starts February 2020
- Service Opening 2022

Station Designs – Four Contextual Solutions

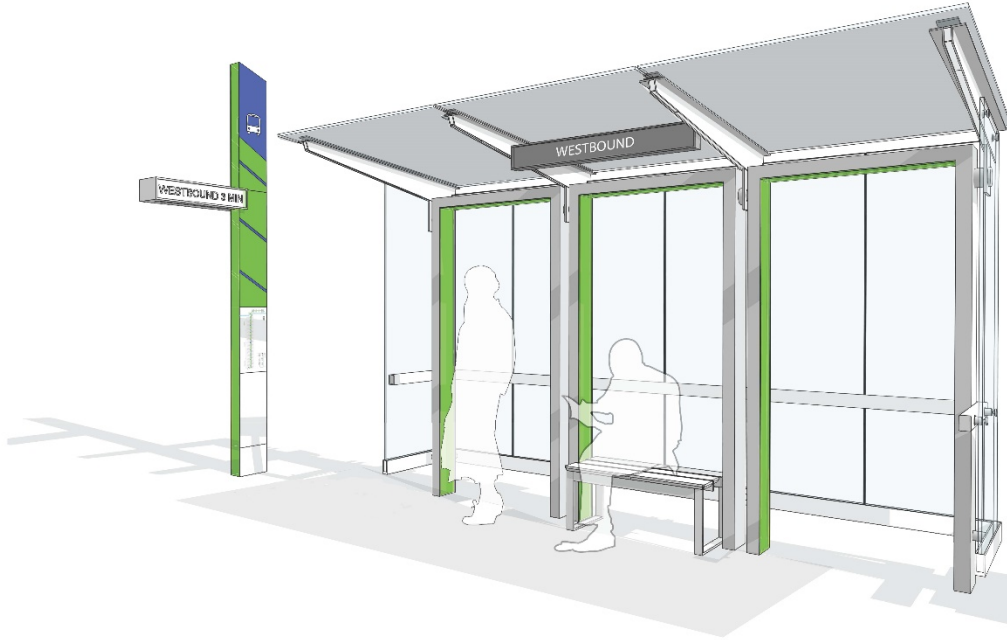


Station Amenities



- Weather Protection/Shelter
- Bus Marker (Lighting, Real Time Information)
- Lighting
- Seating, leaning rails, trash receptacles, bike racks, etc.

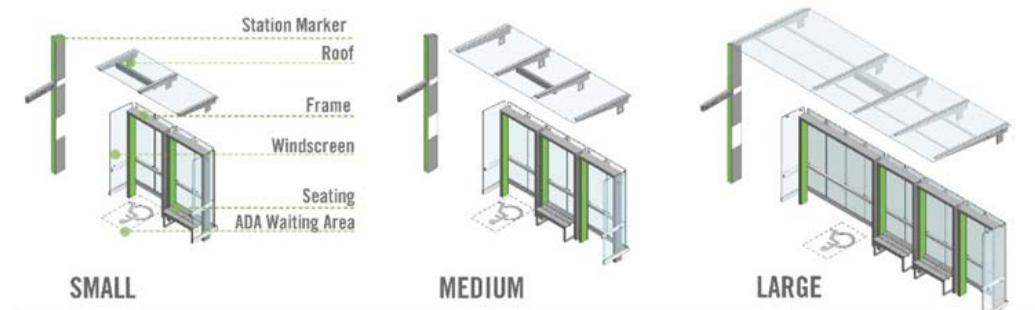
Shelter Design “Frames”



- Scalable, modular & replicable
- Sensitive to context
- Easier to maintain, clean & repair
- Safe sight lines
- Maximizes circulation space
- Easier to fabricate & install
- Shared transit design vocabulary
- Tinted canopy glass



KIT OF PARTS



Next Steps

- Your feedback today
- 100% design & details
- Shelter/Station Amenity Mock-up
- Progress windscreen design development
- Final Community Open House
- Shelter/Amenity Shop Drawings