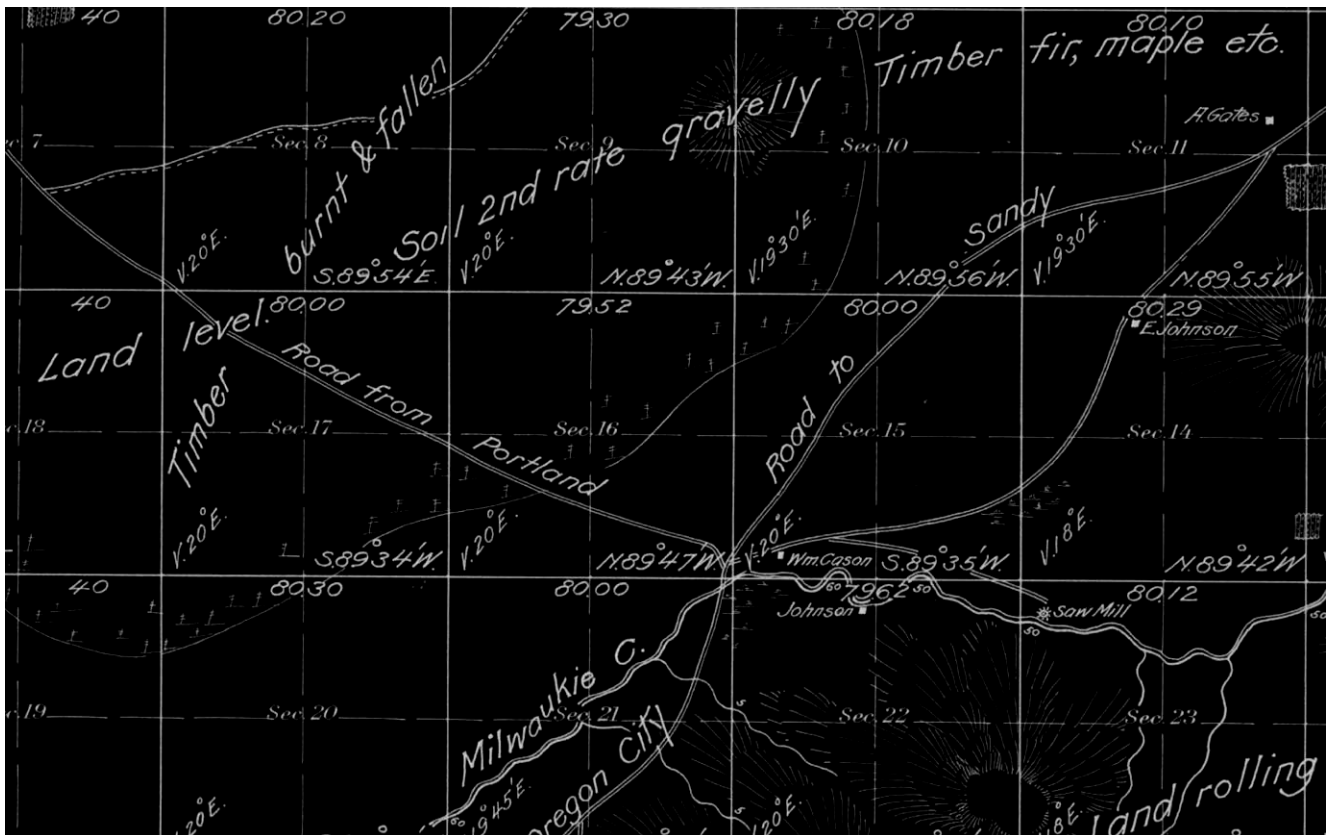


East Portland Historical Overview & Historic Preservation Study

Appendices



City of Portland Bureau of
Planning and Sustainability
Sam Adams, Mayor | Susan Anderson, Director



**Historic
Resources**

Revised
March, 2009

City of Portland Bureau of Planning and Sustainability

Commissioner-In-Charge

Mayor Sam Adams

Director

Susan Anderson

Historic Resources Program

Steve Dotterer, Principal Planner

Liza Mickle, City Planner

Nicholas Starin, City Planner

Project Staff

Liza Mickle, City Planner

Nicholas Starin, City Planner

With Assistance from

Carmen Piekarski, GIS Analyst

Kevin Martin, GIS Analyst

Ralph Sanders, Graphic Designer

Dan Pauley, Community Service Aide

Liza Mylott, Community Service Aide

For more information, contact:

City of Portland Bureau of Planning and Sustainability

1900 SW Fourth Ave, Ste. 7100

Portland, Oregon 97201-5380

Phone: (503) 823-7700

Fax: (503) 823-7800

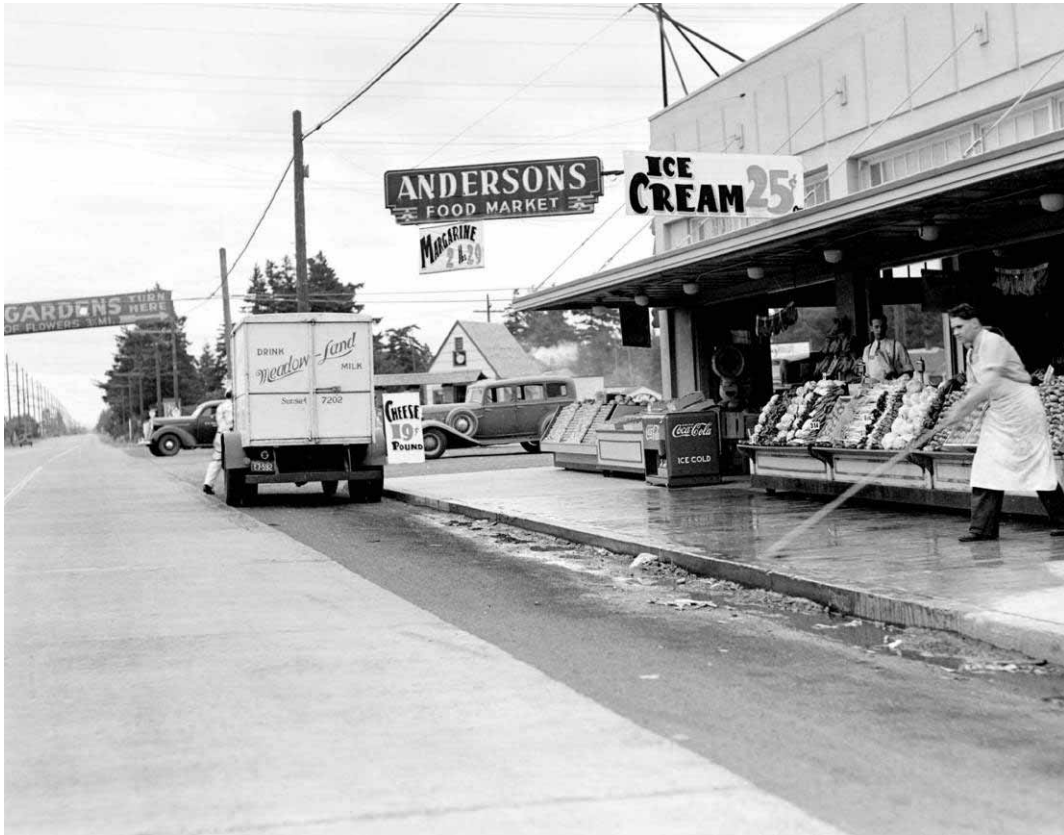
www.portlandonline.com/bps/

The Bureau of Planning and Sustainability is committed to providing equal access to information and hearings. If you need special accommodation, call the Bureau of Planning and Sustainability at (503) 823-7700 (TTY 503-823-6868).

East Portland Historical Overview & Historic Preservation Study: Appendices

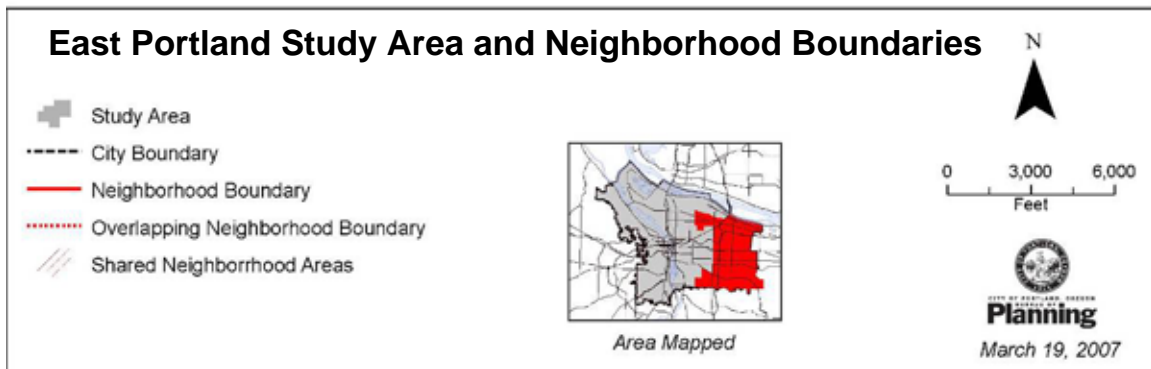
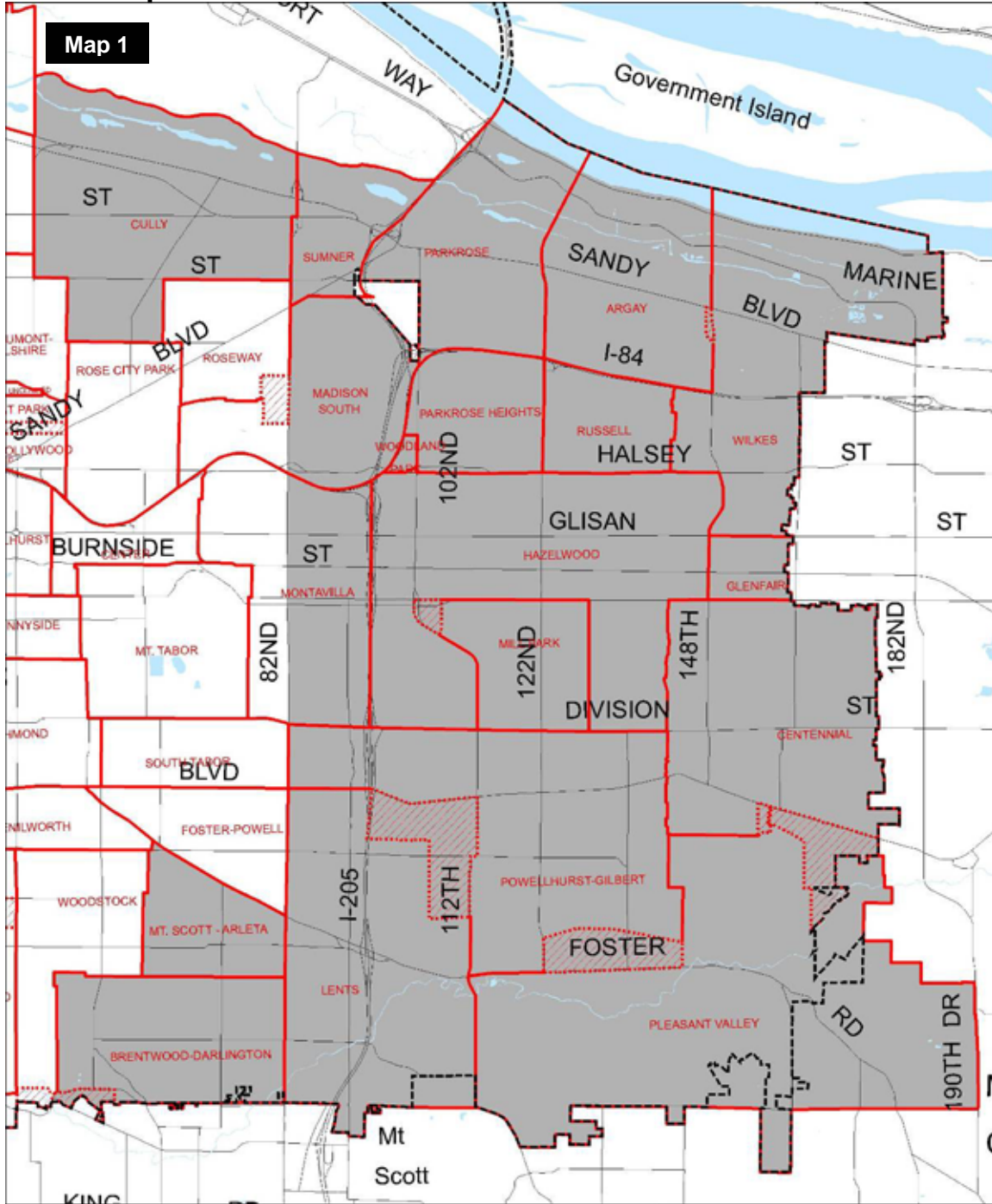
Table of Contents

Appendix A: Maps	1
Map 1: Study Area and Neighborhoods	1
Map 2: Age of Structures, 1913 and Earlier	2
Map 3: Age of Structures, 1914-1940	3
Map 4: Age of Structures, 1941-1958	4
Map 5: Age of Structures, 1959-Present	5
Map 6: Annexations	6
Map 7: Generalized Zoning, Environmental Zones, and Flood Plain	7
Map 8: Schools and School Districts	8
Map 9: Open Space and Parks	9
Map 10: Urban Renewal Areas	10
Map 11: Vacant Lands	11
Map 12: Single-Family Development, 1996-2006	12
Map 13: Multi-Family Development, 1996-2006	13
Map 14: Flag Lots and Skinny Lots	14
Map 15: Lot Sizes More than Twice the Zoned Density	15
Map 16: Metro 2040 Concept	16
Map 17: Pleasant Valley Concept Plan	17
Map 18: Townships and Sections	18
Map 19: GLO Map 1N2E, 1852	19
Map 20: GLO Map 1N2E, 1860	20
Map 21: GLO Map 1S2E, 1854	21
Map 22: GLO Map 1S2E, 1862	22
Map 23: Multnomah County Community Plan Areas, ca. 1977	23
Map 24: Ascot Zoning District and Glendoveer Plan District	24
Appendix B: Aerial Photographs	25
Description and Sources	25
Aerial 1: East Portland - North, 1935	26
Aerial 2a: East Portland - Central (north section), 1936	27
Aerial 2b: East Portland - Central (south section), 1936	28
Aerial 3: Portland International Airport Area, 1948	29
Aerial 4: East Portland - North & Central, 1951	30
Aerial 5: East Portland - West/Central, 1960	31
Aerial 6a: East Portland - North Sequence, 1935	32
Aerial 6b: East Portland - North Sequence, 1951	33
Aerial 6c: East Portland - North Sequence, 1960	34
Aerial 6d: East Portland - North Sequence, 1996	35
Aerial 6e: East Portland - North Sequence, 2006	36
Aerial 7a: East Portland - South Sequence, 1936	37
Aerial 7b: East Portland - South Sequence, 1952	38
Aerial 7c: East Portland - South Sequence, 2006	39
Notes on Selected East Portland Aerial Photographs	40
Appendix C: Historical Timeline	42
Appendix D: East Portland Federal Land Patents	44
Appendix E: East Portland Properties in the Historic Resources Inventory	49
Appendix F: East Portland Annexations by Area & Period	51
Appendix G: Miscellaneous Data Tables	53



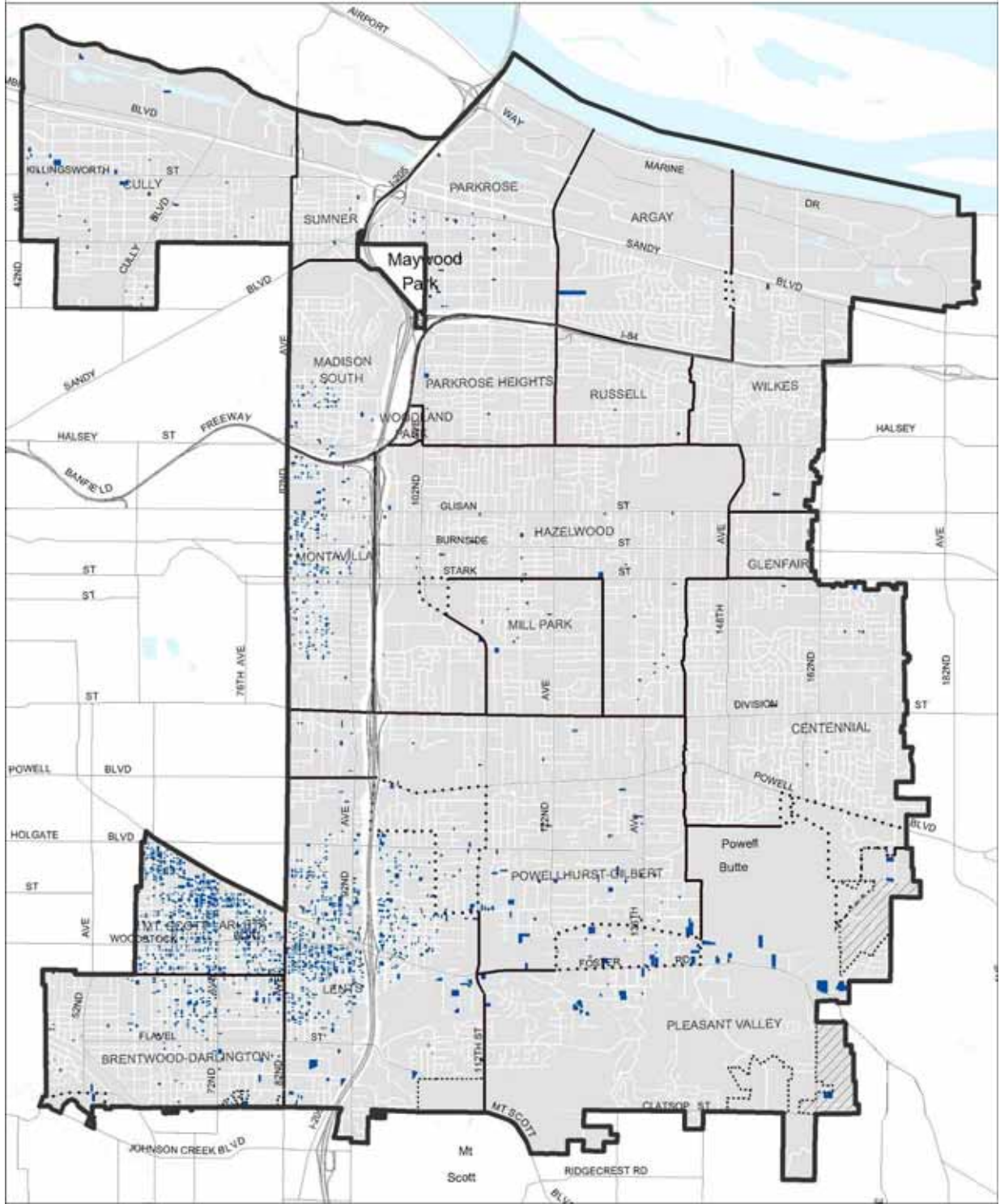
SE 82nd and Powell, 1937. Photo: City of Portland Stanley Parr Archives and Record Center

Appendix A: Maps



Compare with Map 27 showing Multnomah County neighborhood boundaries in 1977, prior to annexations.

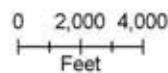
Map 2 East Portland Age of Structure - 1913 and Earlier



July 7, 2007

LEGEND

- Study Area Boundary
- City Boundary
- Neighborhood Boundary
- Overlapping Neighborhood Boundary
- //// Pleasant Valley Plan District

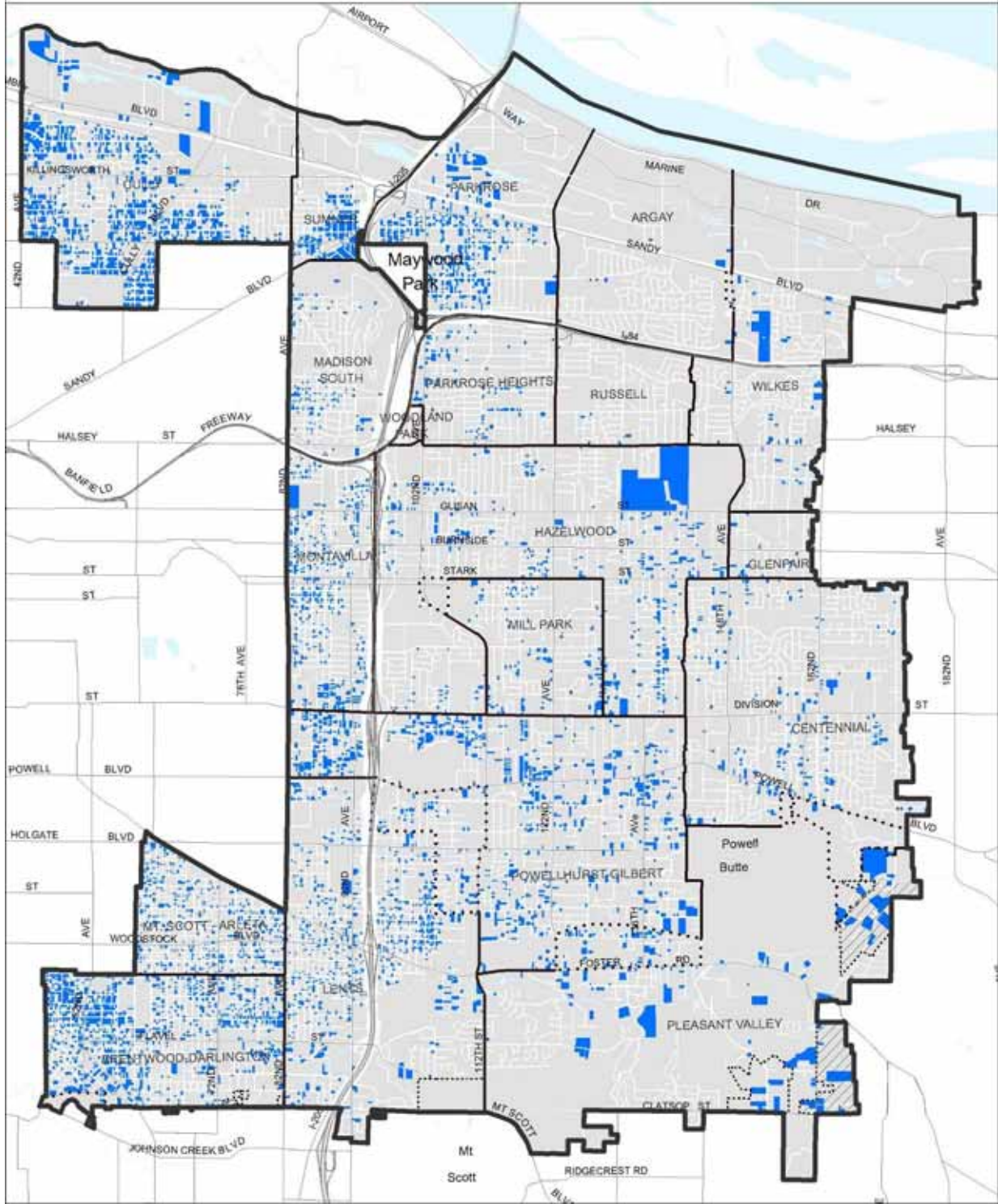


CITY OF PORTLAND, OREGON
BUREAU OF
Planning

All data compiled from source materials at different scales. For more detail, please refer to the source materials or City of Portland, Bureau of Planning.

Map 3

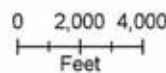
East Portland Age of Structure - 1914 to 1940



July 7, 2007

LEGEND

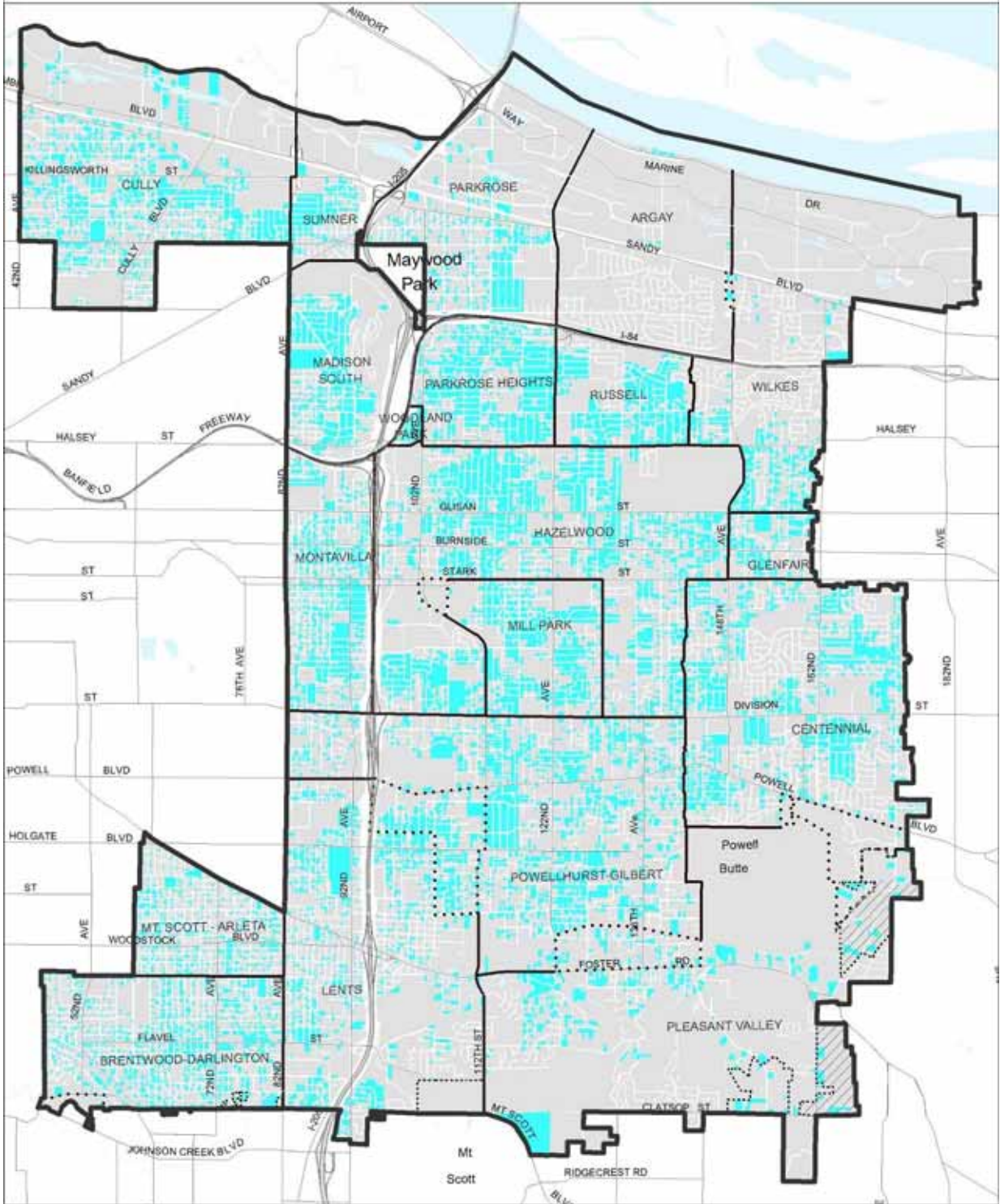
- Study Area Boundary
- City Boundary
- Neighborhood Boundary
- Overlapping Neighborhood Boundary
- Pleasant Valley Plan District



CITY OF PORTLAND, OREGON
BUREAU OF
Planning

All data compiled from source materials at different scales.
For more detail, please refer to the source materials or
City of Portland, Bureau of Planning.

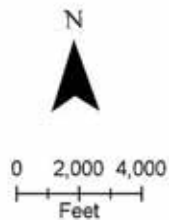
Map 4 East Portland Age of Structure - 1941 to 1958



July 7, 2007

LEGEND

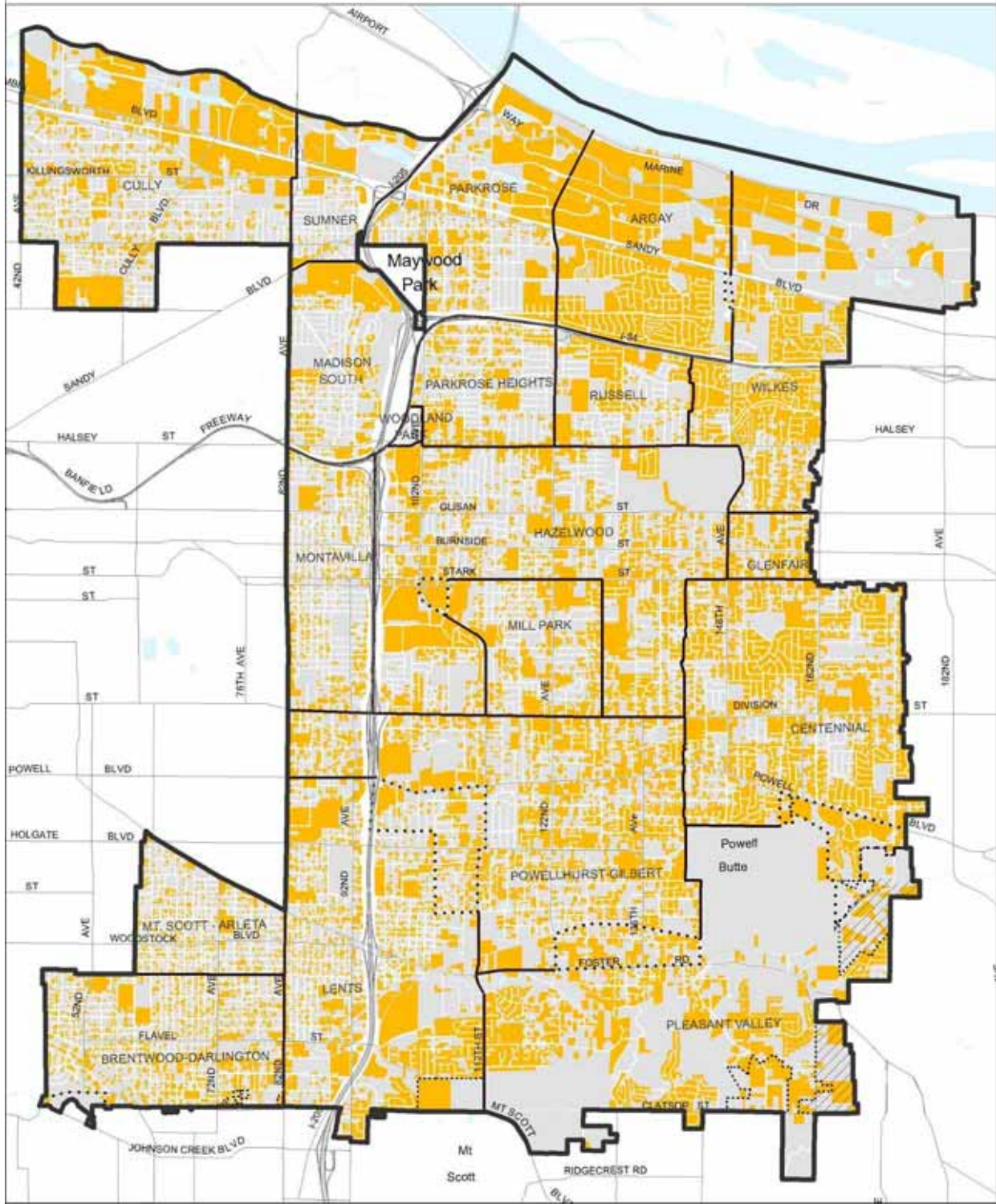
- Study Area Boundary
- City Boundary
- Neighborhood Boundary
- Overlapping Neighborhood Boundary
- //// Pleasant Valley Plan District



CITY OF PORTLAND, OREGON
BUREAU OF
Planning

All data compiled from source materials at different scales. For more detail, please refer to the source materials or City of Portland, Bureau of Planning.

Map 5 East Portland Age of Structure - 1959 to Present



July 7, 2007

LEGEND

- Study Area Boundary
- City Boundary
- Neighborhood Boundary
- Overlapping Neighborhood Boundary
- Pleasant Valley Plan District

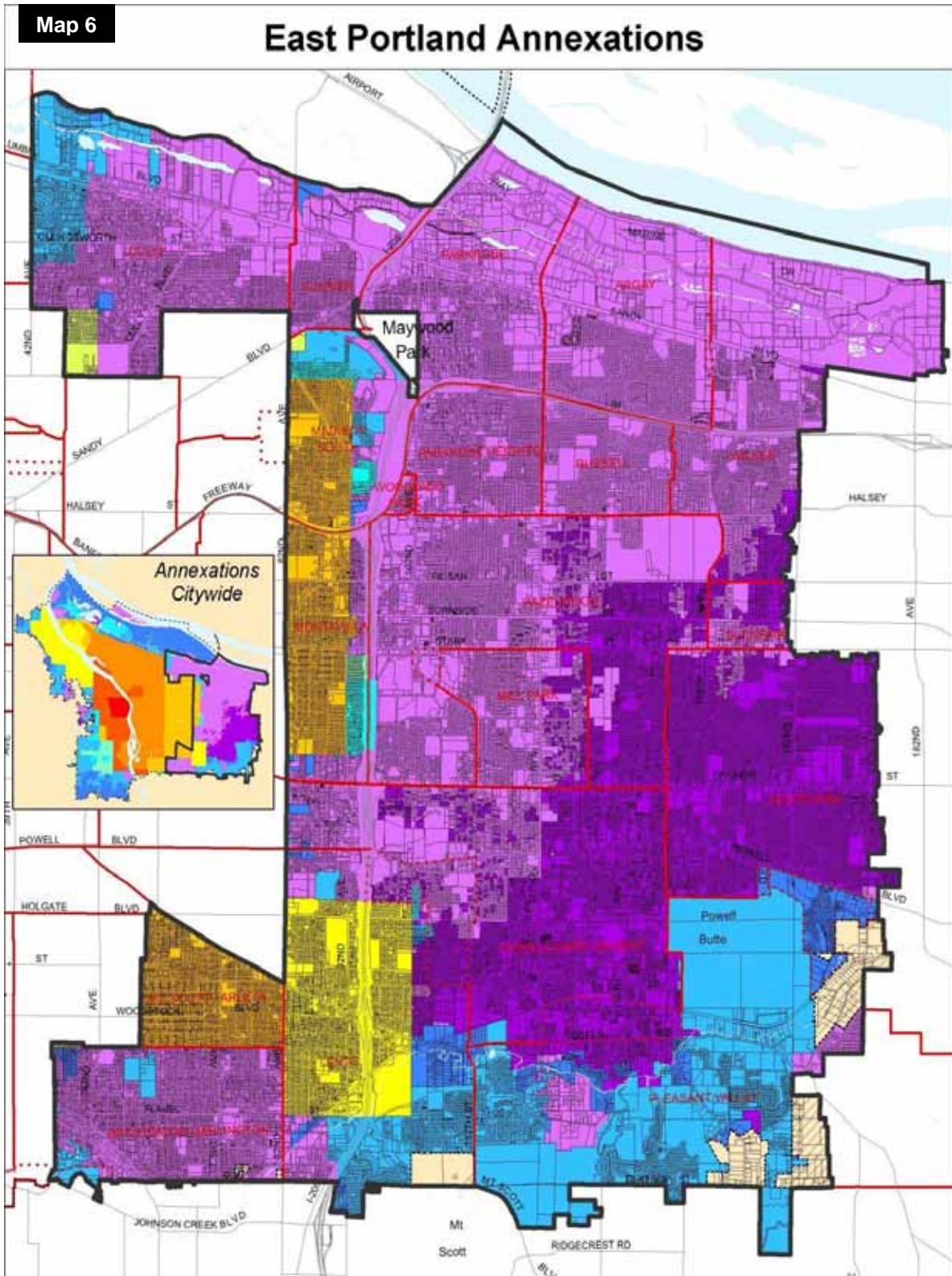


0 2,000 4,000
Feet



CITY OF PORTLAND, OREGON
BUREAU OF
Planning

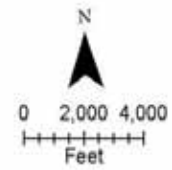
All data compiled from source materials at different scales. For more details, please refer to the source materials or City of Portland, Bureau of Planning.



LEGEND

- Study Area Boundary
- City Boundary
- Neighborhood Boundary
- Overlapping Neighborhood Boundary
- /// Pleasant Valley Plan District
- Area outside of City

Annexation Year	
Red	Pre 1881
Orange	1881 - 1890
Yellow-Orange	1891 - 1900
Yellow	1901 - 1910
Light Green	1911 - 1920
Green	1921 - 1930
Light Blue	1931 - 1940
Blue	1941 - 1950
Dark Blue	1951 - 1960
Light Purple	1961 - 1970
Medium Purple	1971 - 1980
Dark Purple	1981 - 1990
Black	1991 - Present



June 15, 2007



CITY OF PORTLAND, OREGON
BUREAU OF
Planning

All data compiled from source materials at different scales. For more detail, please refer to the source materials of the City of Portland, Bureau of Planning.

Map 7

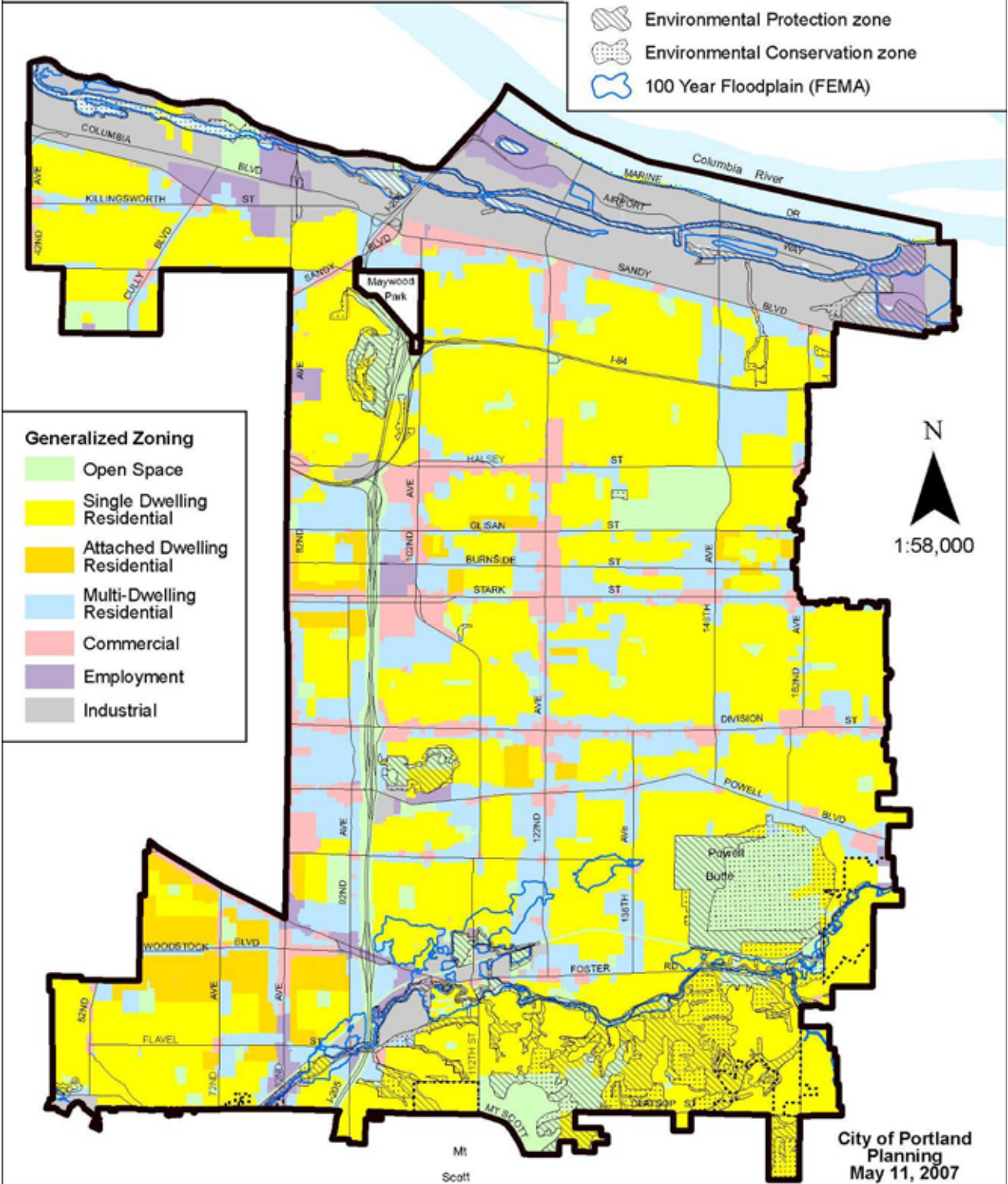
East Portland Generalized Zones, Floodplain & Environmental Zones

LEGEND

- Study Area Boundary
- - - - - City Boundary
-  Environmental Protection zone
-  Environmental Conservation zone
-  100 Year Floodplain (FEMA)

Generalized Zoning

-  Open Space
-  Single Dwelling Residential
-  Attached Dwelling Residential
-  Multi-Dwelling Residential
-  Commercial
-  Employment
-  Industrial



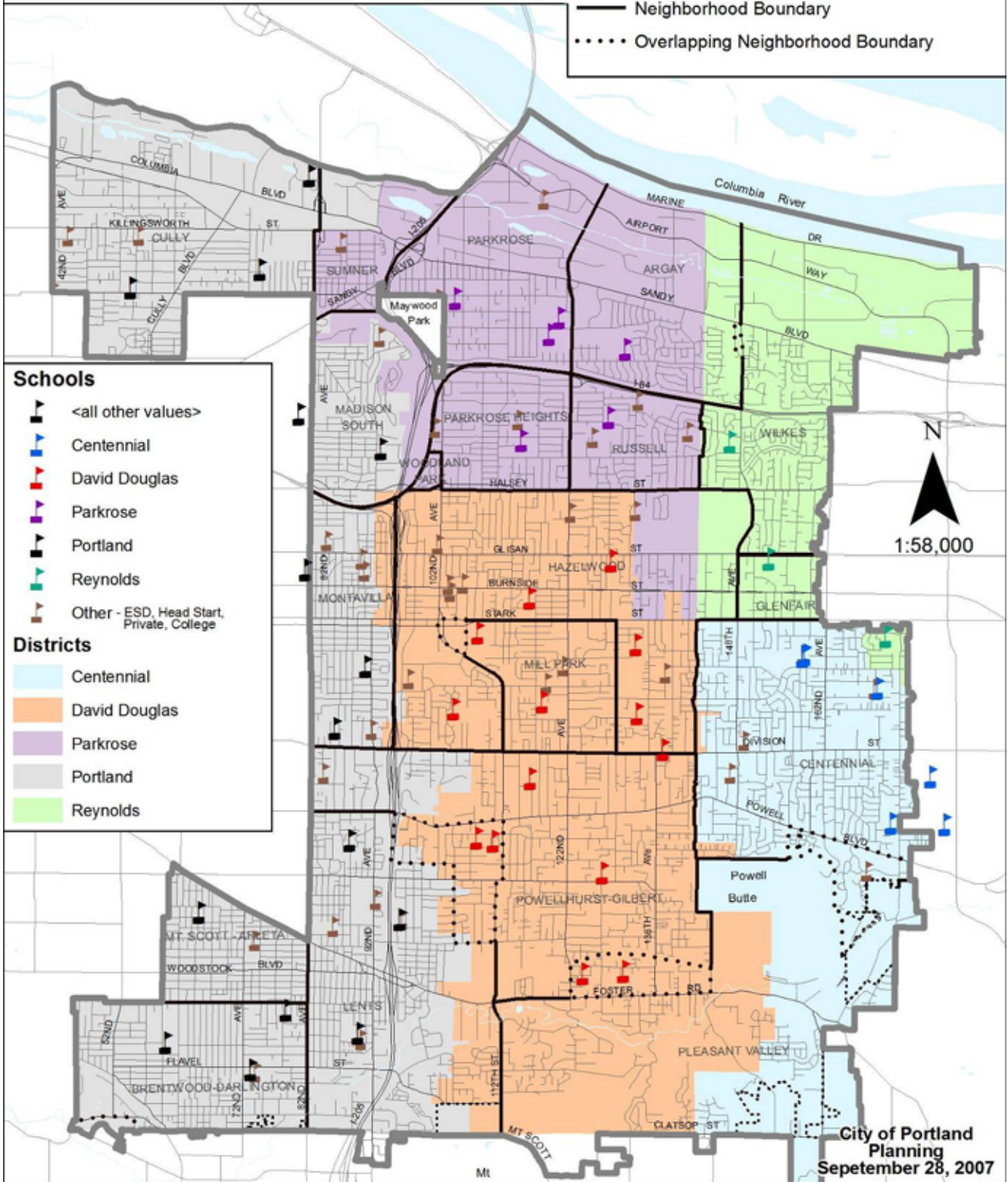
City of Portland
Planning
May 11, 2007

Map 8

East Portland Schools by District

LEGEND

- Study Area Boundary
- City Boundary
- Neighborhood Boundary
- Overlapping Neighborhood Boundary



Schools

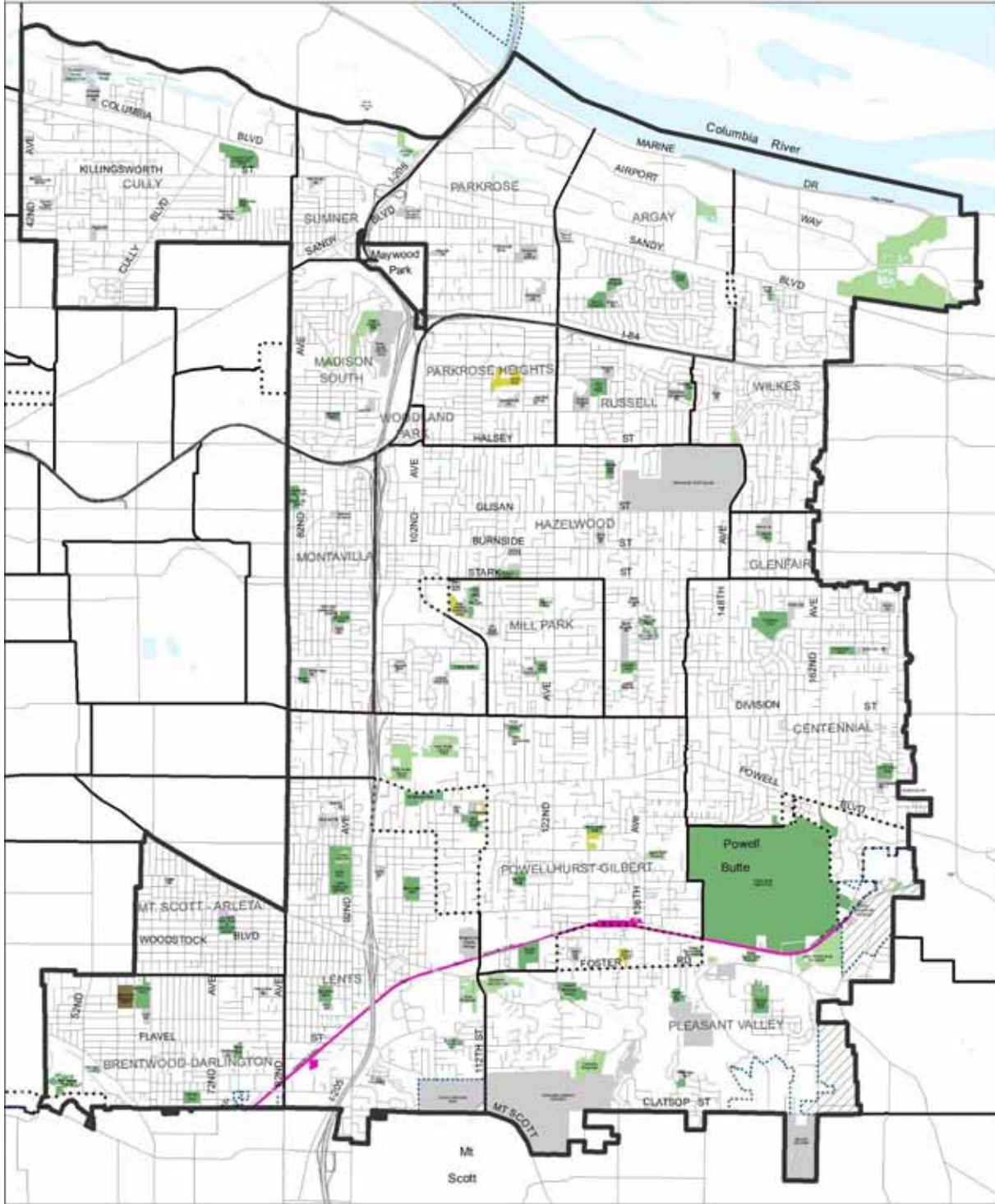
- <all other values>
- Centennial
- David Douglas
- Parkrose
- Portland
- Reynolds
- Other - ESD, Head Start, Private, College

Districts

- Centennial
- David Douglas
- Parkrose
- Portland
- Reynolds

City of Portland
Planning
September 28, 2007

Map 9 East Portland Public Parks & Open Space



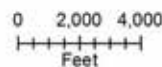
LEGEND

- Study Area Boundary
- City Boundary
- Neighborhood Boundary
- Overlapping Neighborhood Boundary
- //// Pleasant Valley Plan District
- Non City of Portland Parks

Parks & Open Spaces

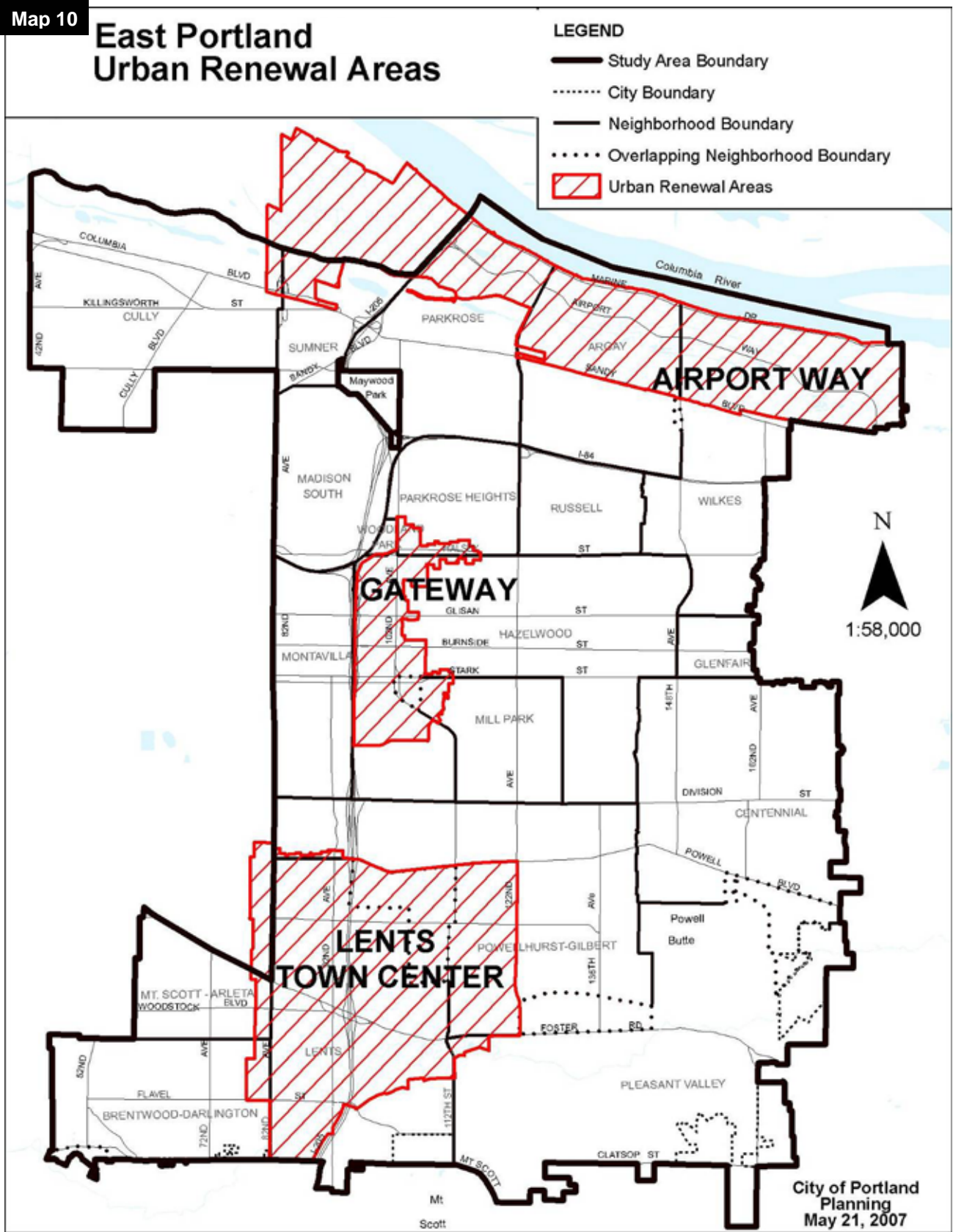
- Developed Park
- Open Space
- Cemetery
- Public Golf Course
- School
- Pool
- Community Centers
- Community Garden
- Sidewalk/Path

September 24, 2007

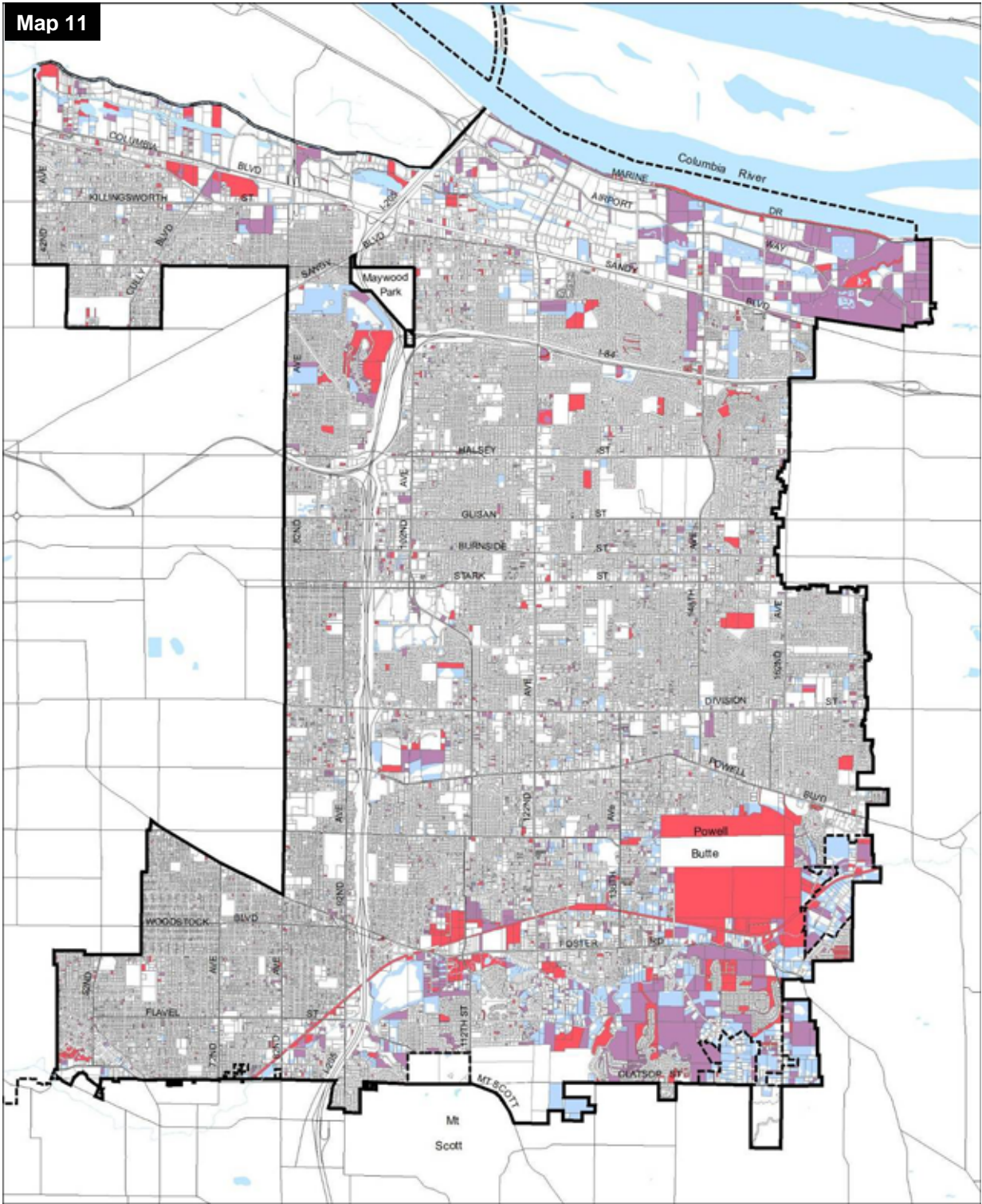


Planning

All data compiled from source materials of different scales. For more detail, please refer to the source materials or City of Portland, Bureau of Planning.

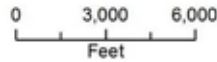


Map 11



East Portland Vacant Lands

- City Boundary
- ▭ Study Area
- Metro Vacant Land Inventory '05
- Multnomah Co. Assessment & Taxation 'Vacant'
- Areas where Metro Vacant Lands Inventory and Multnomah County Assessor 'Vacant' overlap



INFORMATION SOURCES:

Vacant Land
 Developed by Metro for Vacant Lands Inventory. Updated July 2006 based on July 2005 aerial photography. Registered to taxlots.

Taxlots: Originally produced by Oregon Dept. of Revenue. Modified and updated by Multnomah County Assessment & Taxation and Portland Dept. of Transportation. Updated weekly by City of Portland. Accuracy +/- 1 feet.

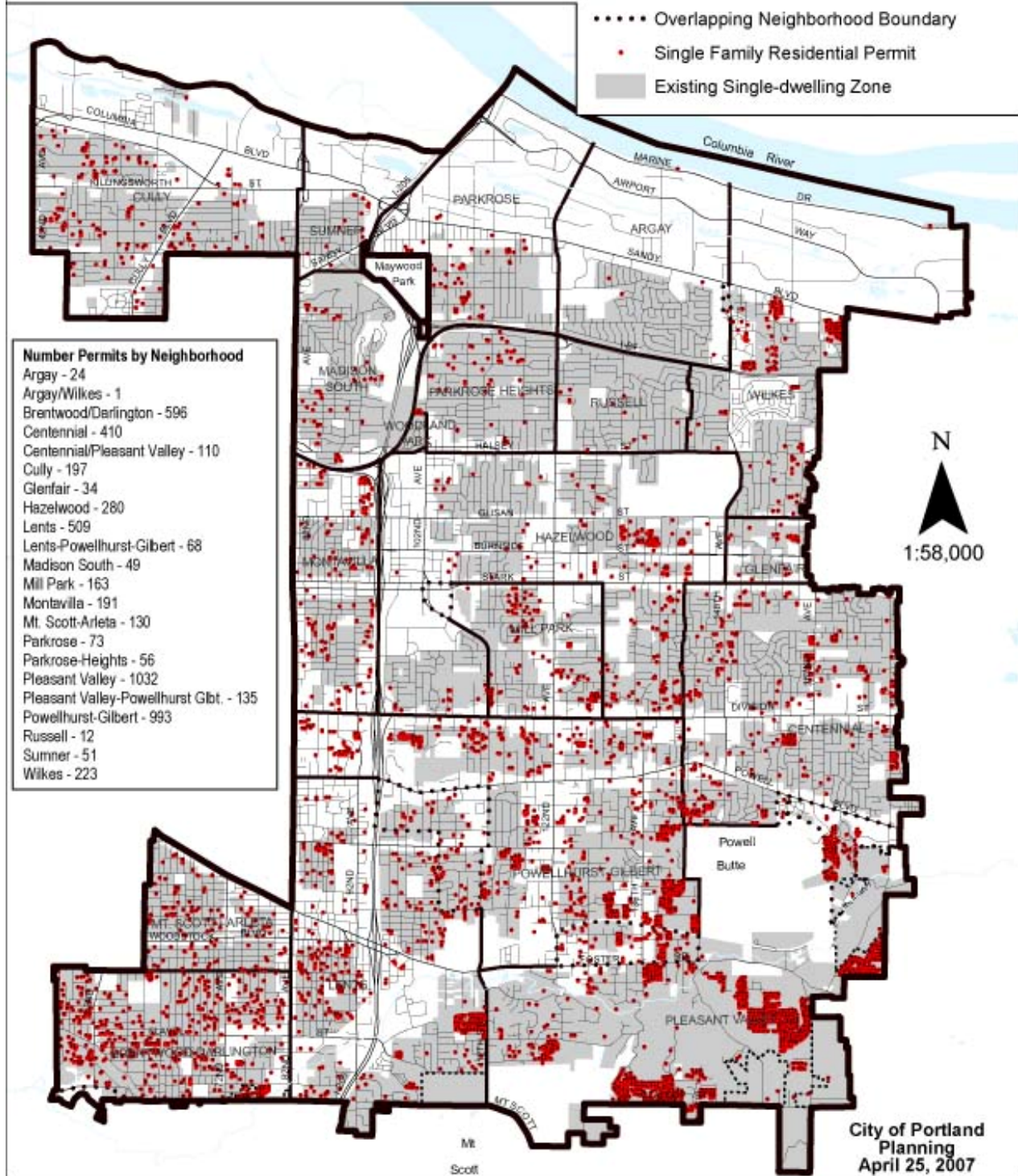
City of Portland
 Bureau of Planning
 Geographic Information System
 September 19, 2007



CITY OF PORTLAND, OREGON
 BUREAU OF
Planning

Map 12 **East Portland**
Single Family Development
1996 - 2006

- LEGEND**
- Study Area Boundary
 - City Boundary
 - Neighborhood Boundary
 - Overlapping Neighborhood Boundary
 - Single Family Residential Permit
 - Existing Single-dwelling Zone

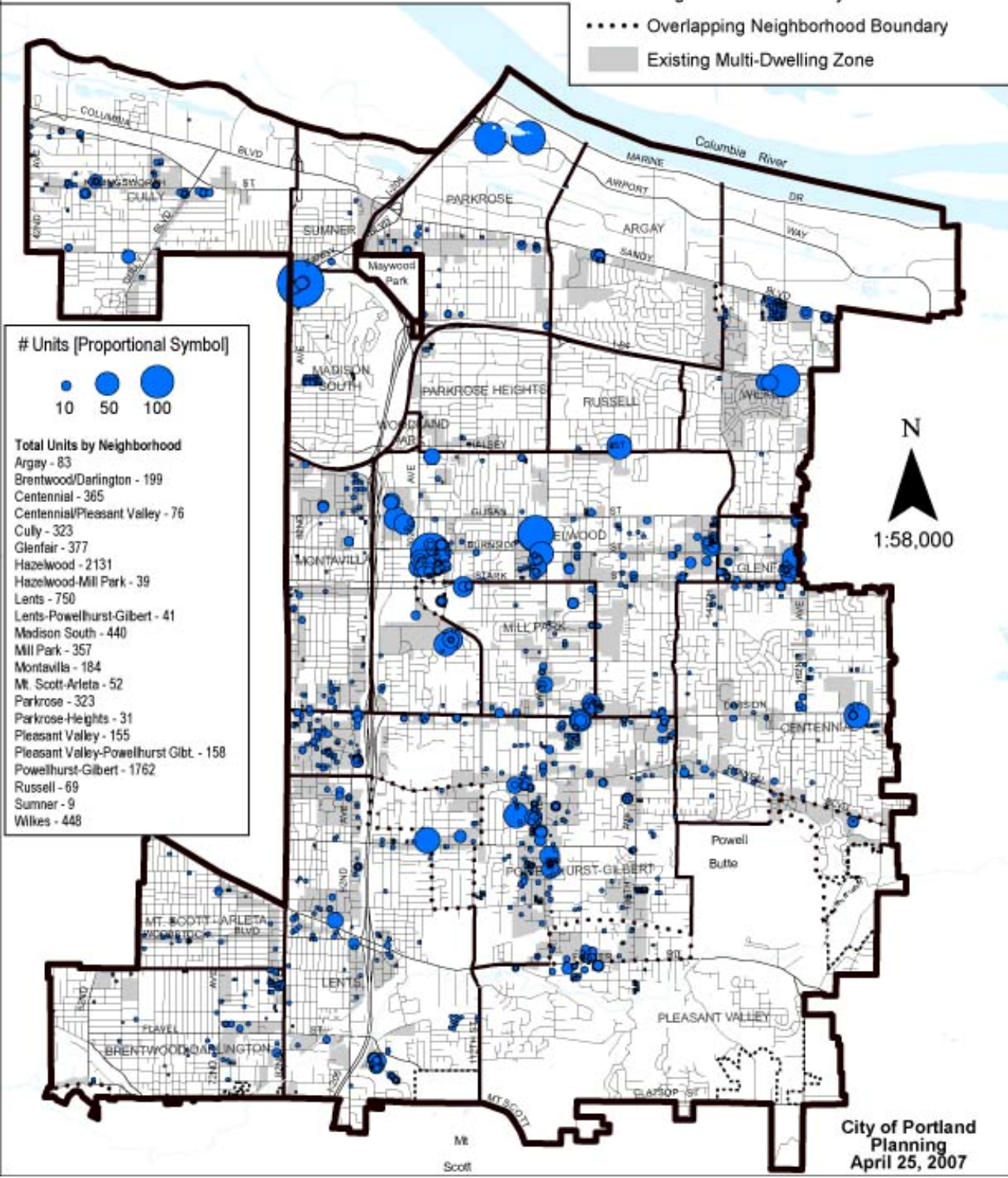


Map 13

East Portland Multi-Family Development 1996 - 2006

LEGEND

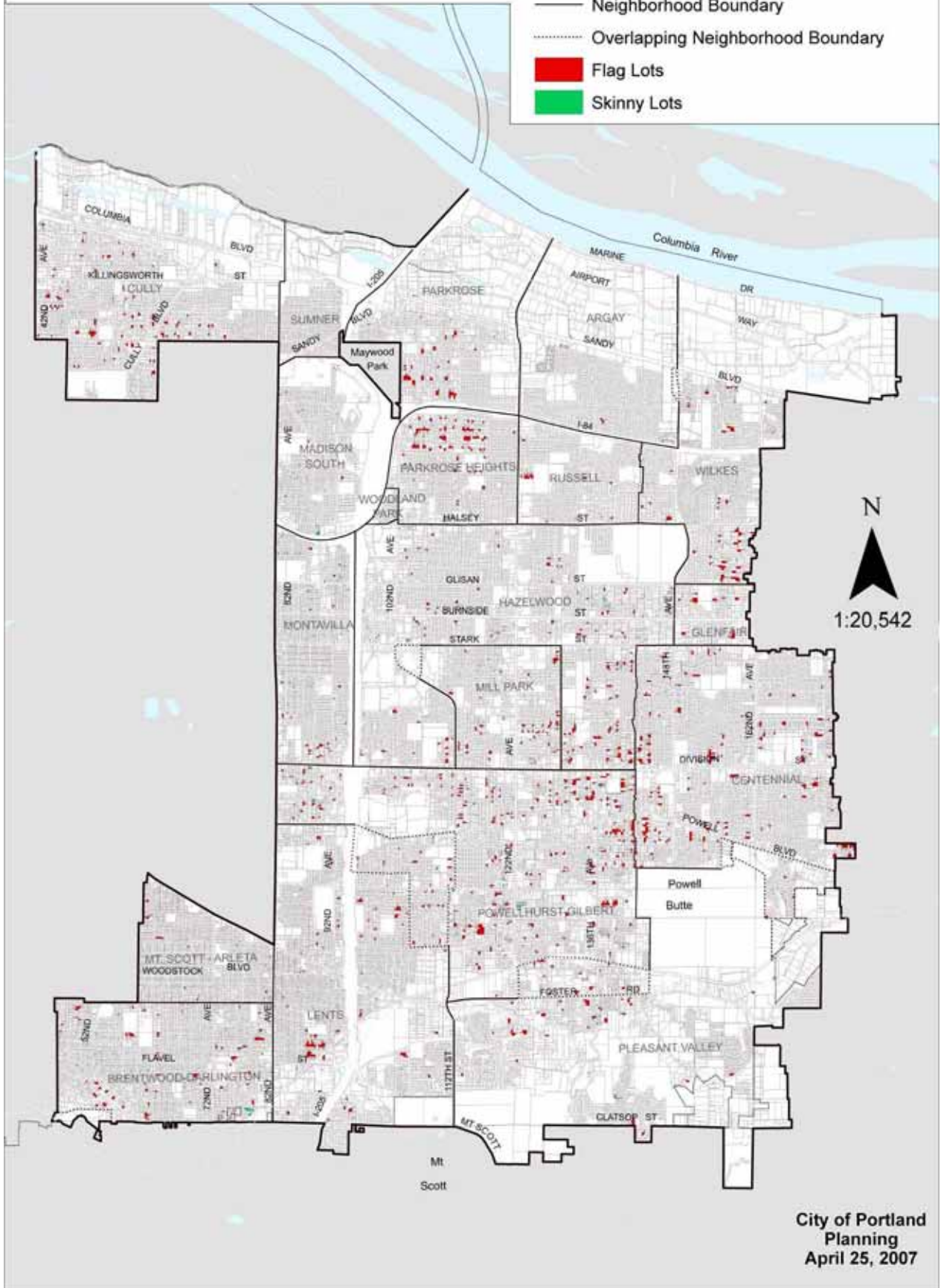
- Study Area Boundary
- City Boundary
- Neighborhood Boundary
- Overlapping Neighborhood Boundary
- Existing Multi-Dwelling Zone



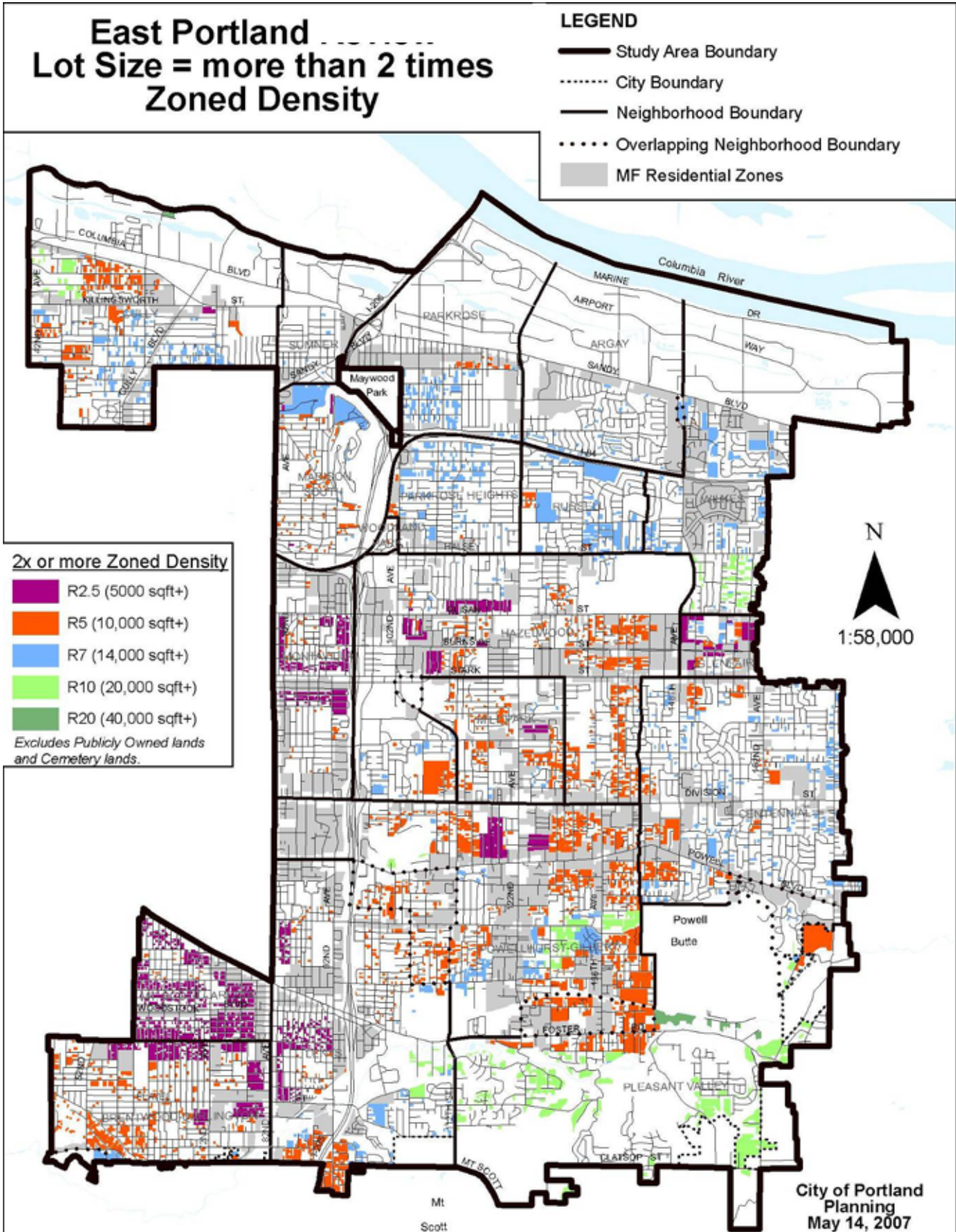
Map 14 **East Portland**
Flag Lots and Skinny Lots

LEGEND

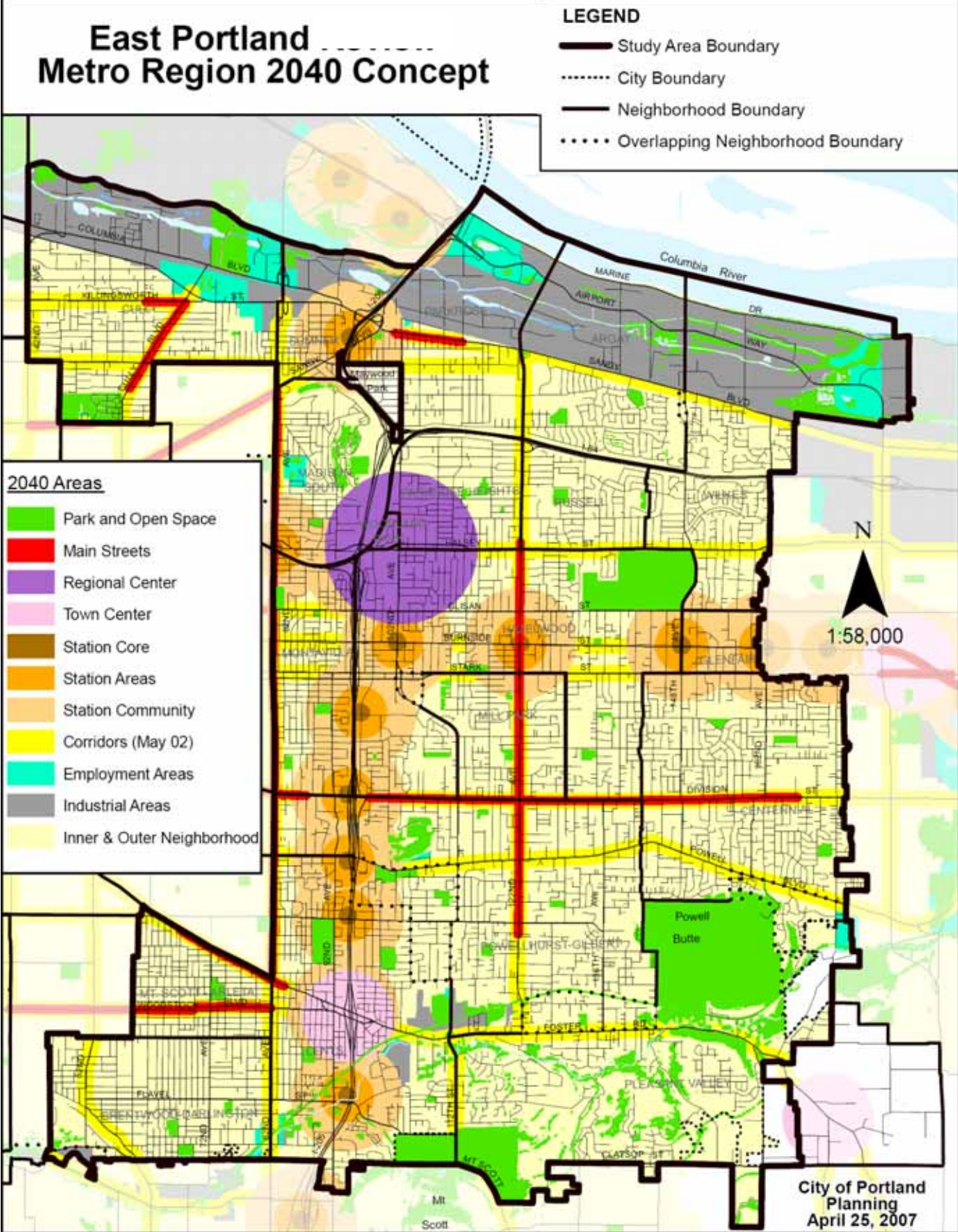
- Study Area Boundary
- City Boundary
- Neighborhood Boundary
- Overlapping Neighborhood Boundary
- Flag Lots
- Skinny Lots

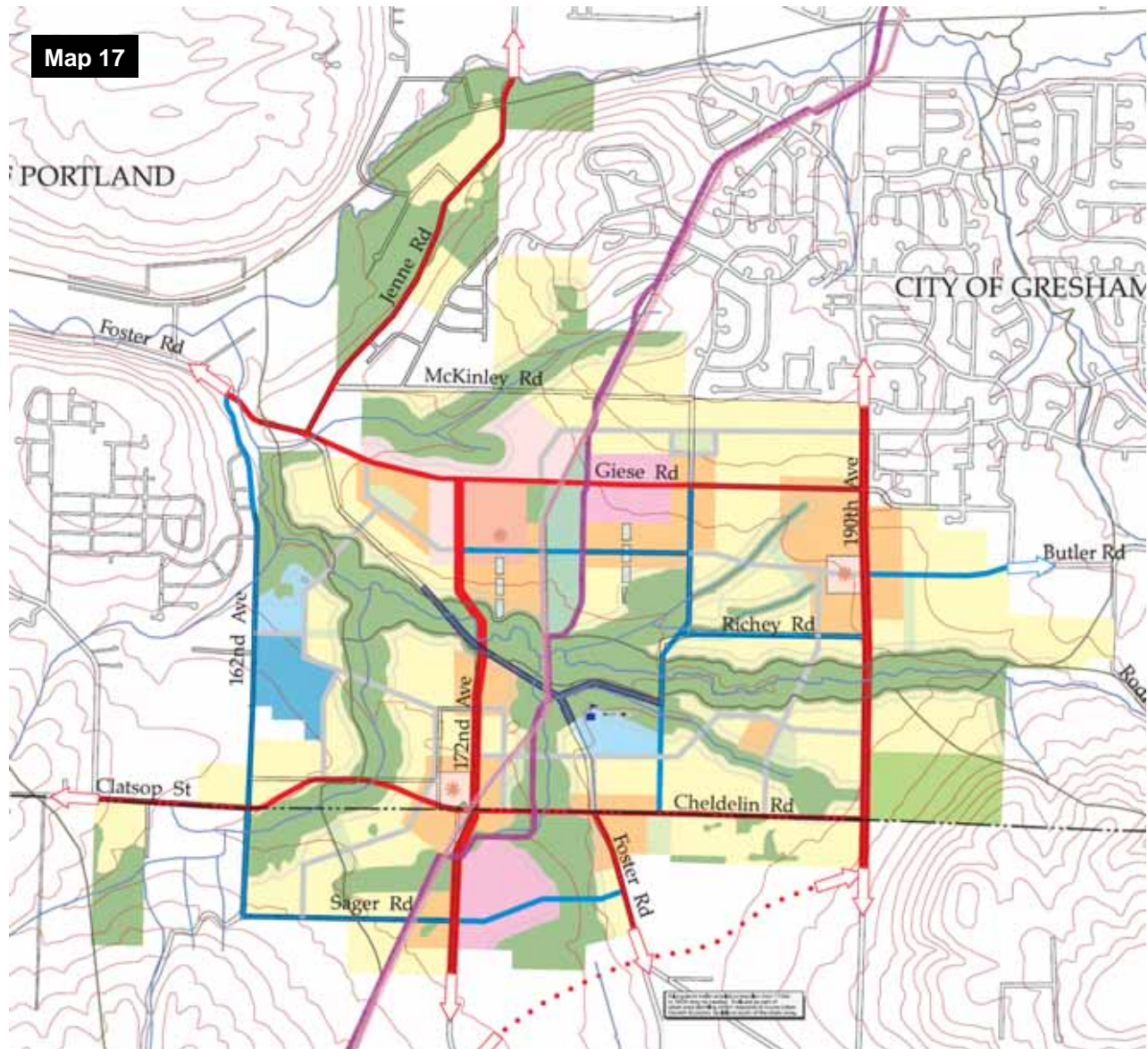


Map 15

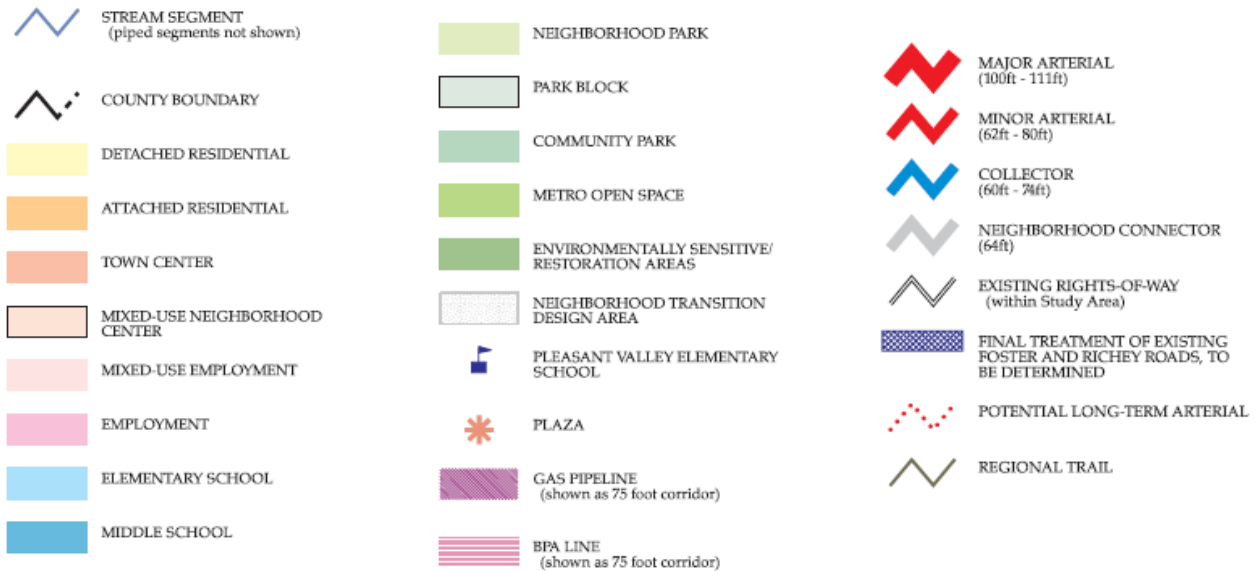


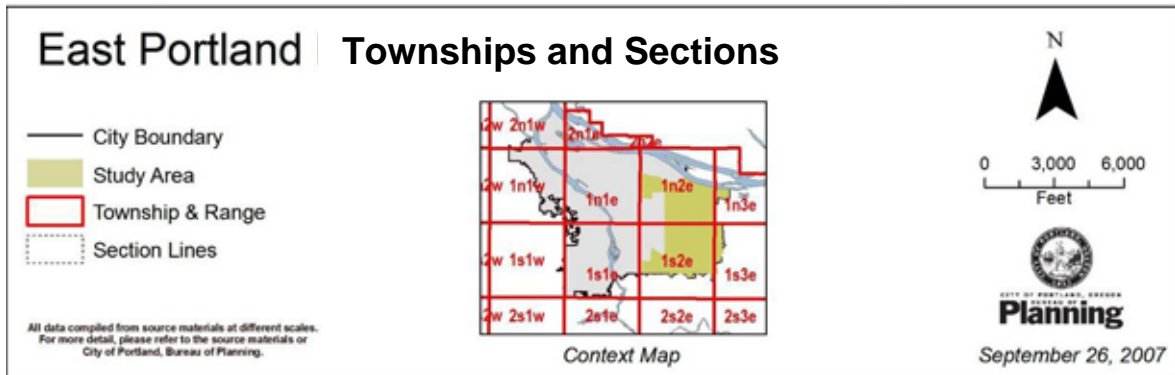
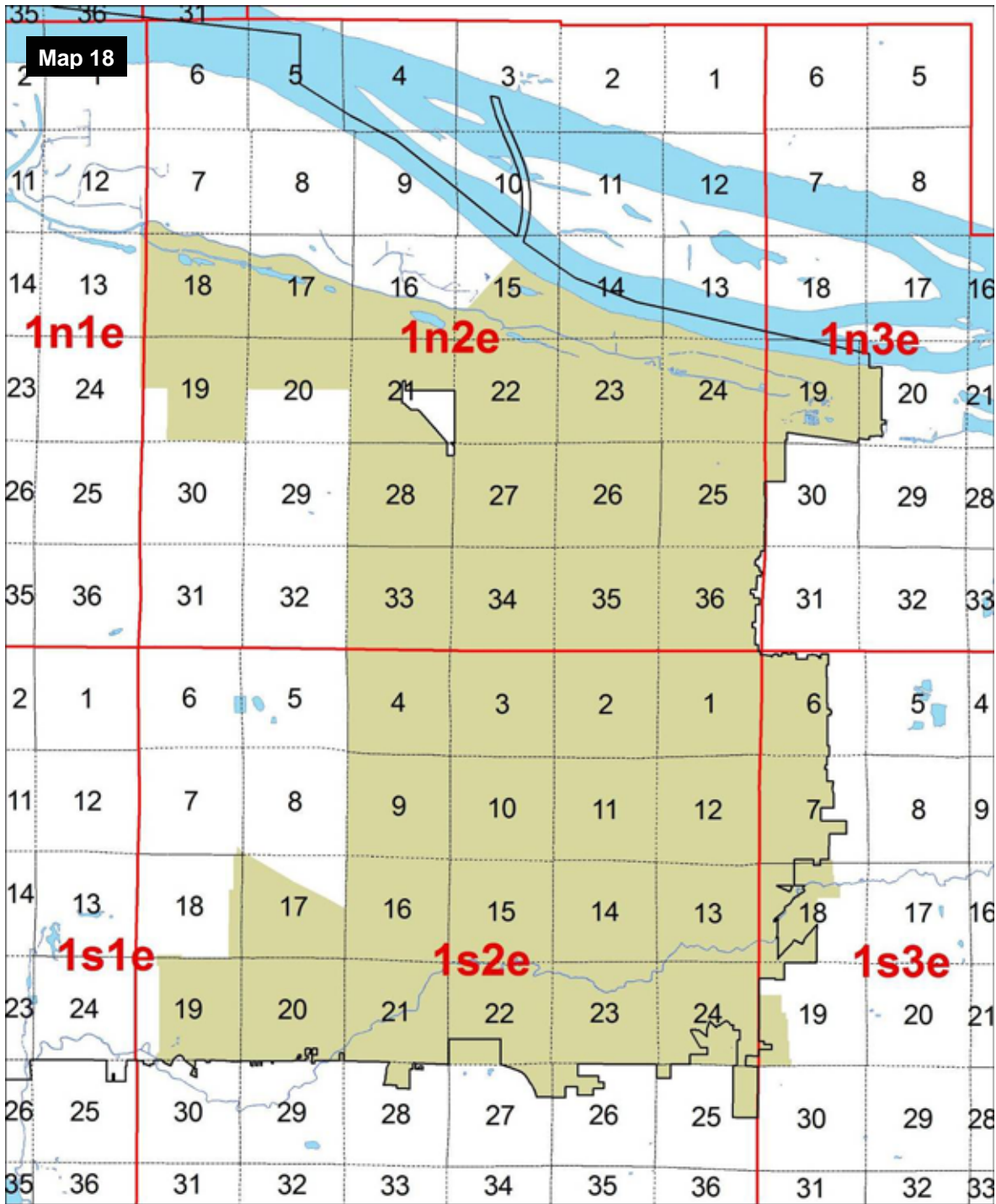
Map 16





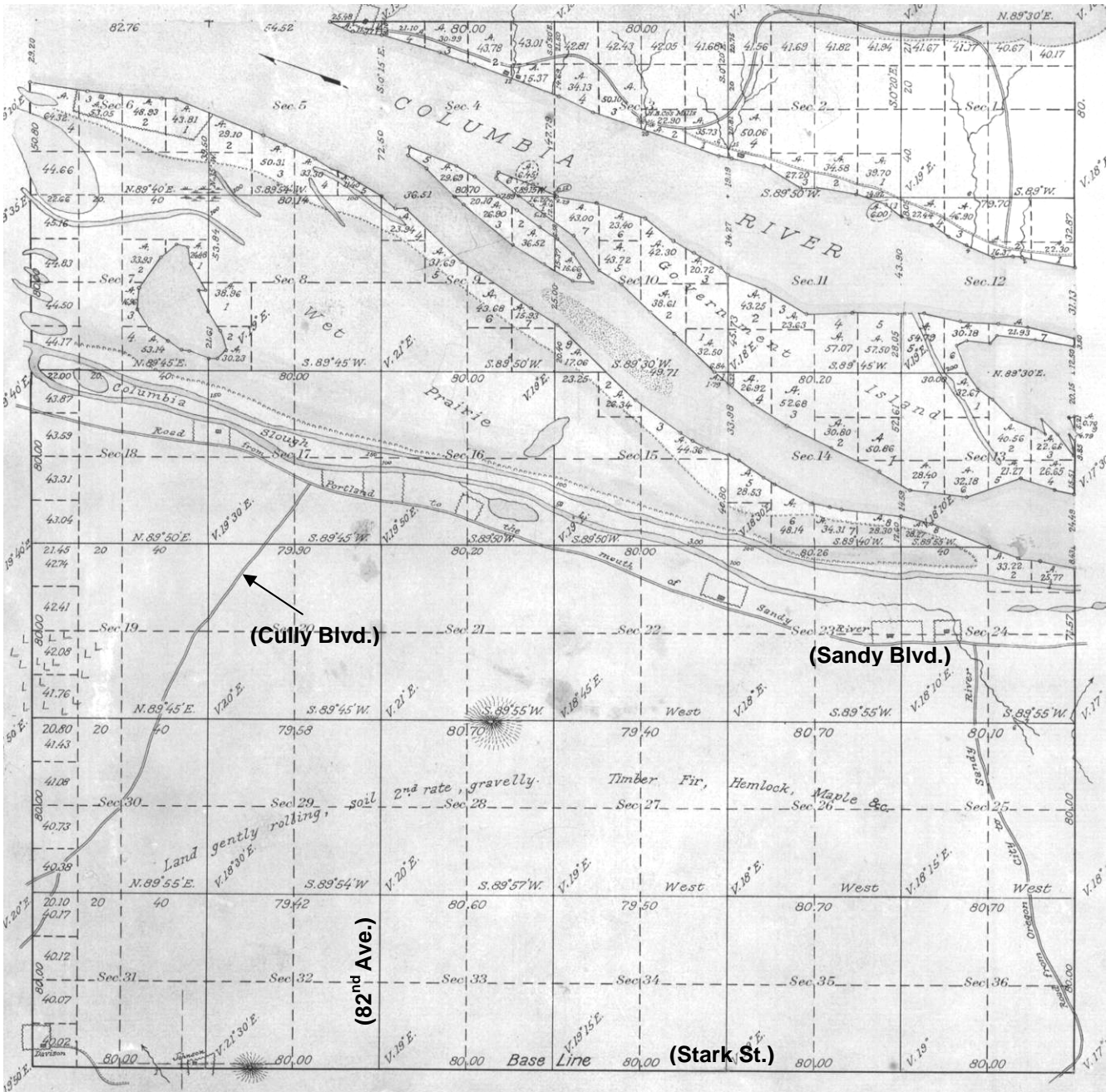
Pleasant Valley Concept Plan, 2002





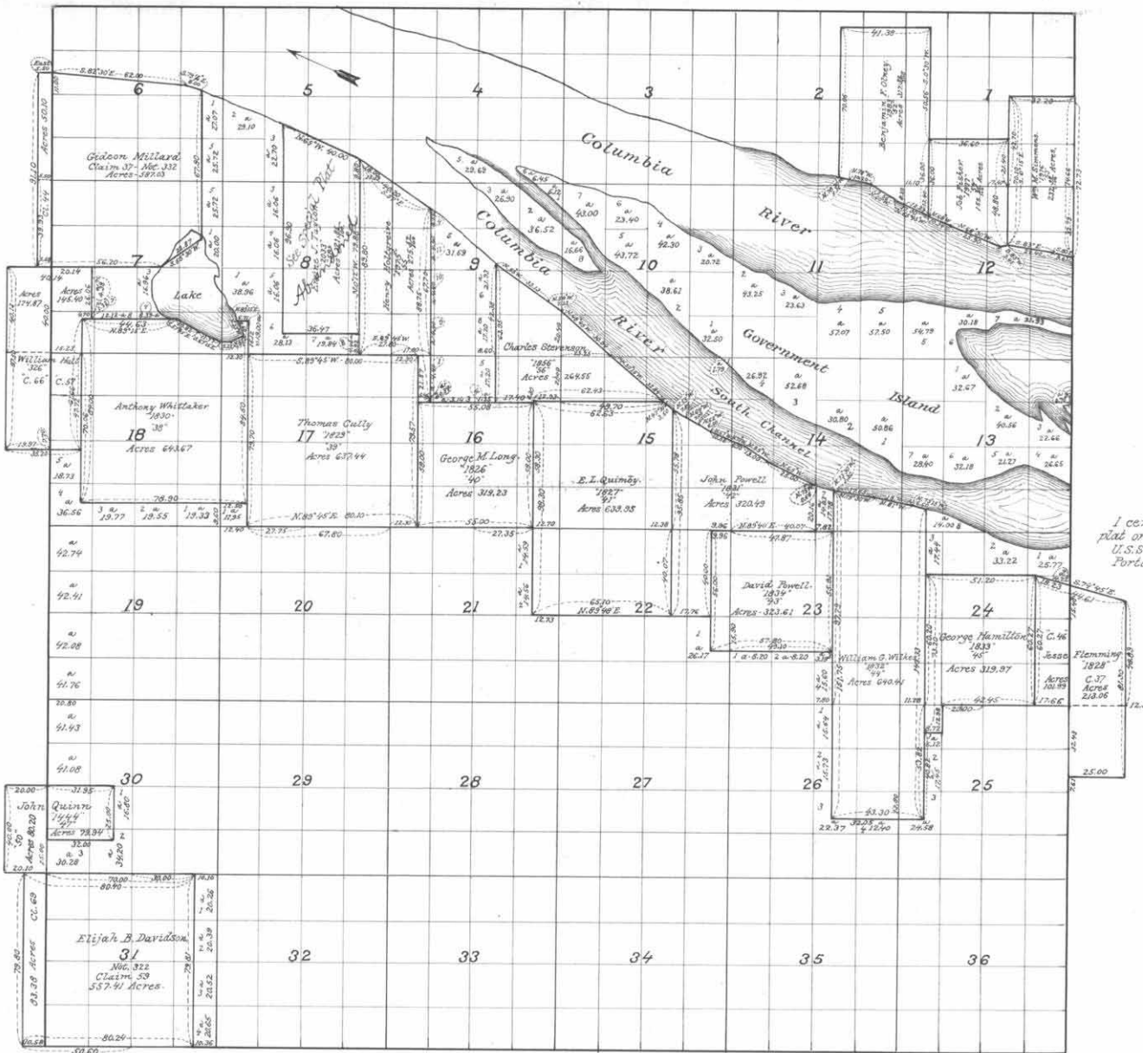
Map 19

Oregon General Land Office Map 1N2E, 1852



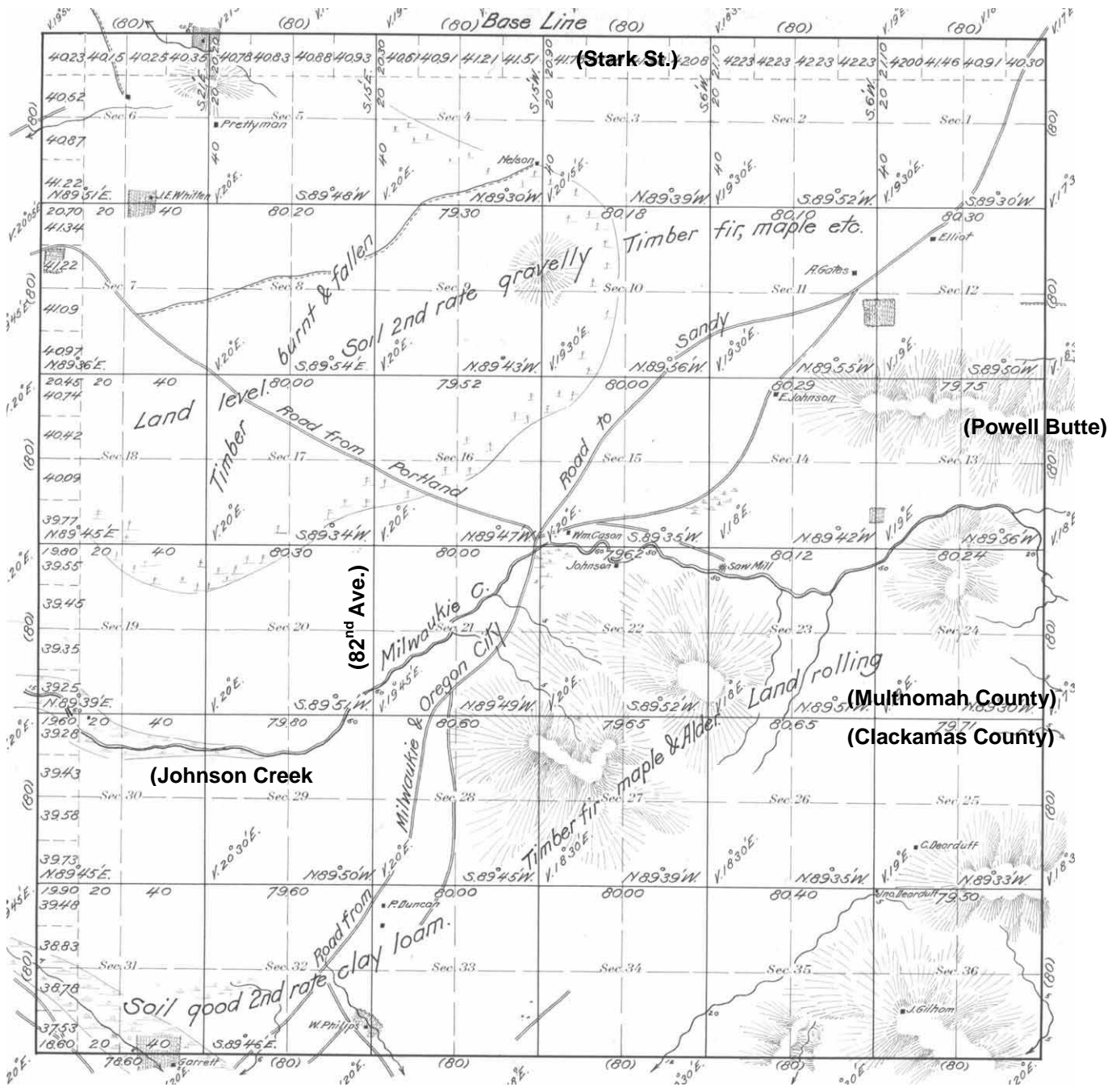
Map 20

Oregon General Land Office Map 1N2E, 1860



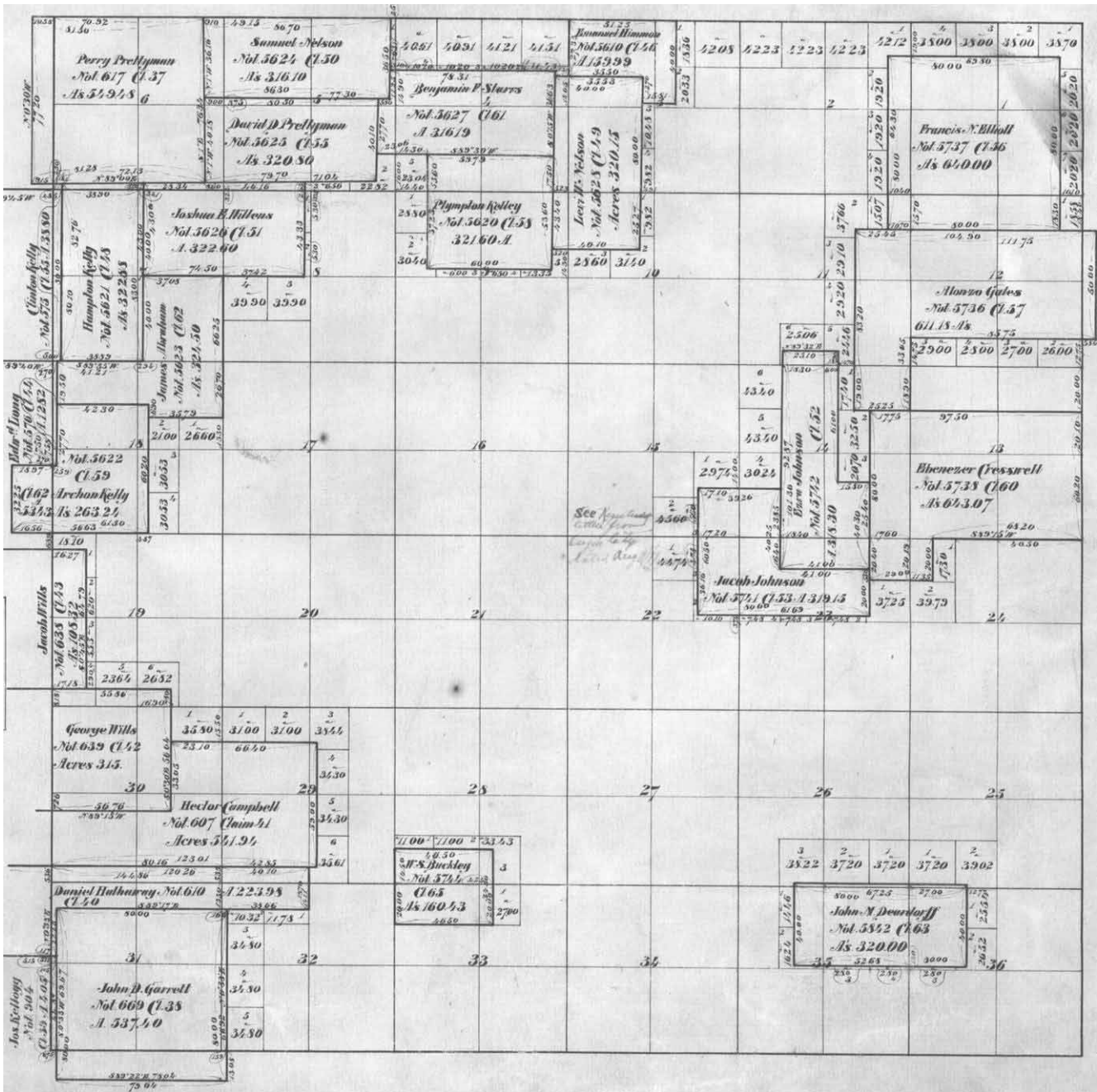
Map 21

Oregon General Land Office Map 1S2E, 1854

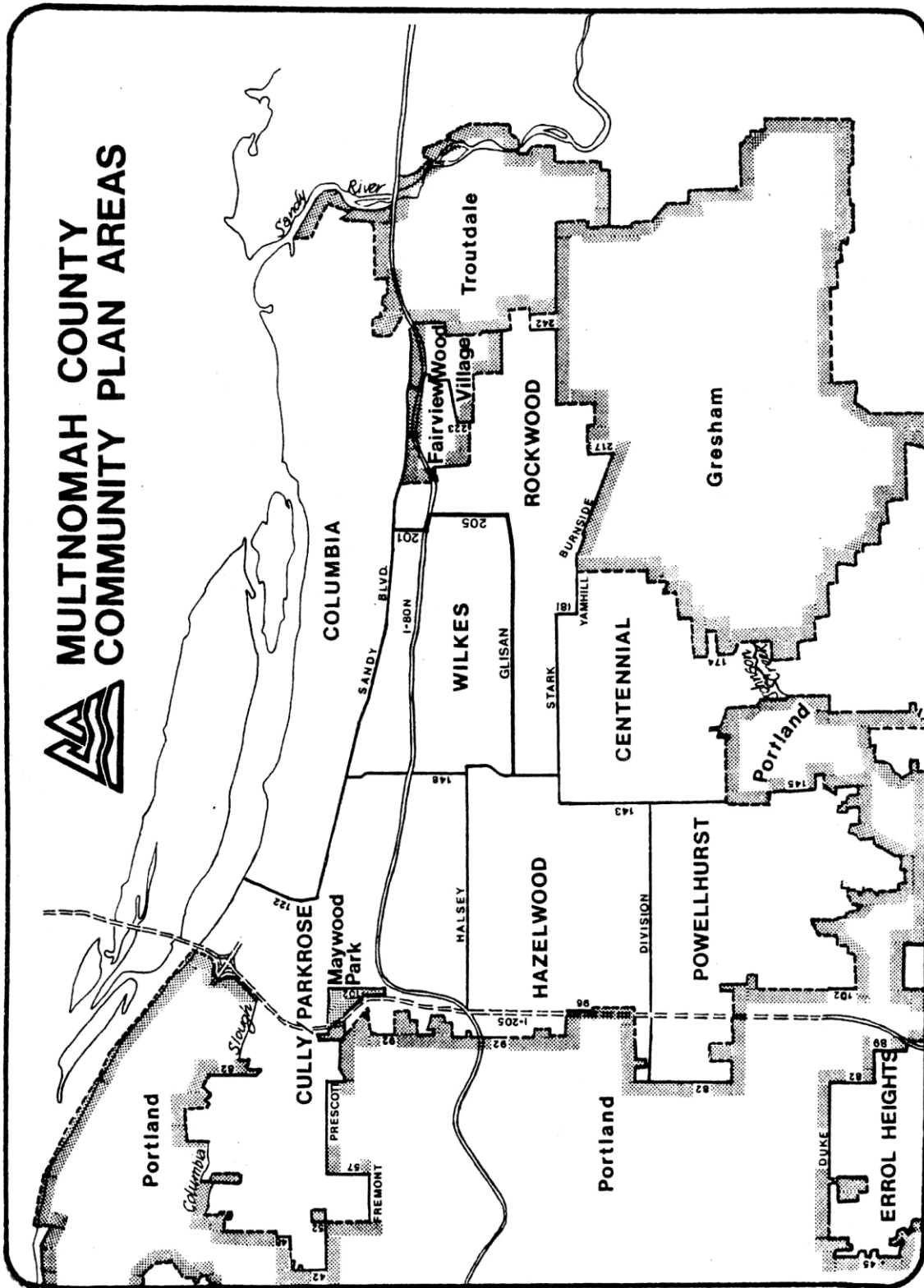


Map 22

Oregon General Land Office Map 1S2E, 1862

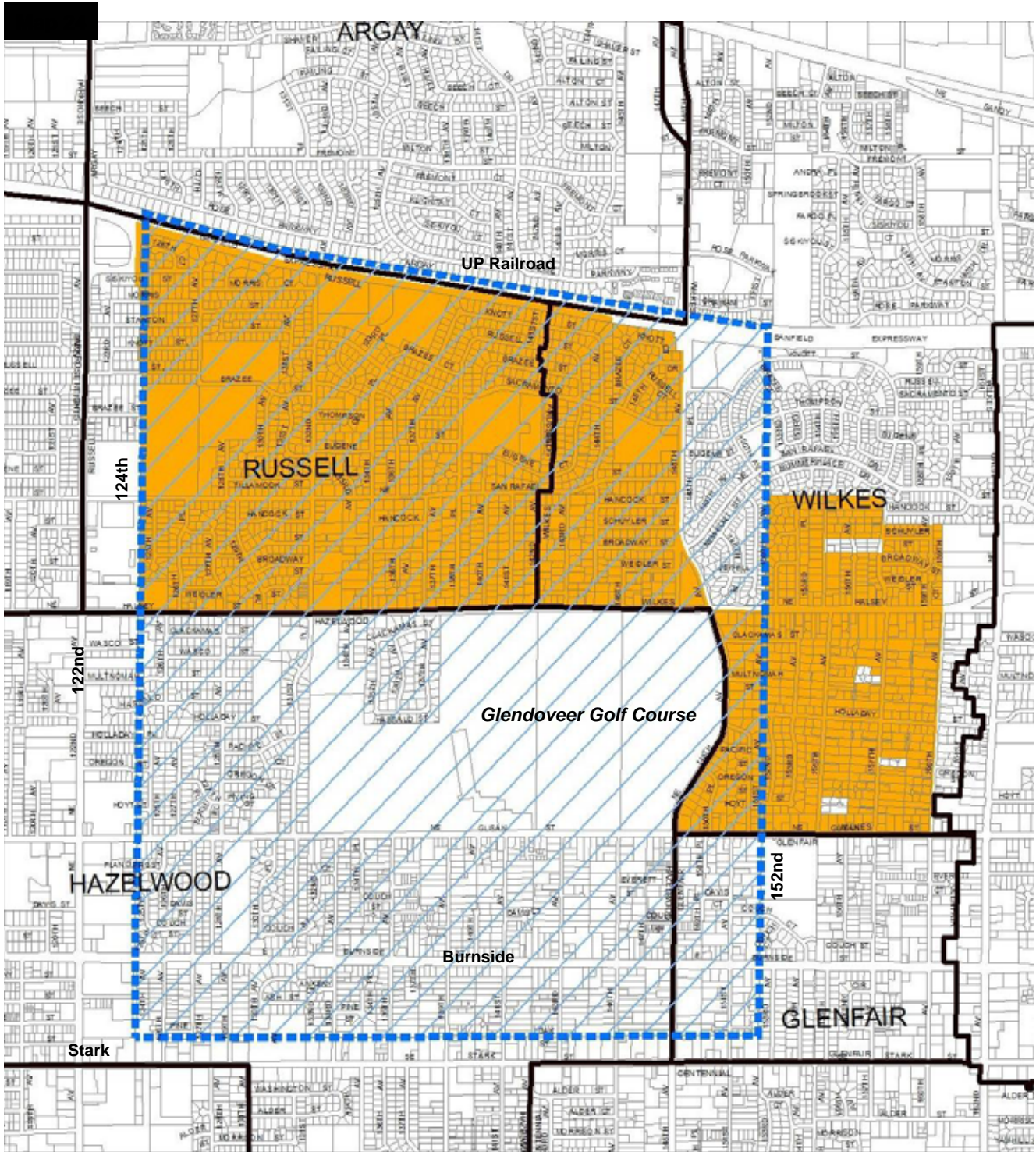


Multnomah County Community Plan Areas, ca. 1977





MULTNOMAH COUNTY DIVISION OF PLANNING AND DEVELOPMENT 2115 SE MORRISON PORTLAND, OREGON 97214


Compare with Map 1 showing current City of Portland neighborhood boundaries, after annexations.



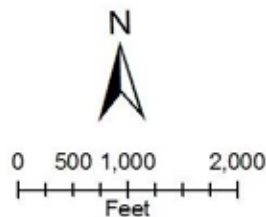
Ascot Zoning District (1949) & Glendover Plan District (Existing)

 Approximate Boundary of Ascot Zoning District (1949)

 Neighborhood Boundary

 Glendover Plan District

See also Aerial Photos 6a-6e.



Note: Written descriptions of the Ascot Zoning District boundaries vary. Boundary shown is approximate; the actual boundary may have differed slightly, e.g. one source indicates that western edge may have been 122nd and the southern may have been E Burnside.

Appendix B: Aerial Photographs

Description and Sources

This appendix contains aerial photographs and mosaics showing various parts of the East Portland study area spanning the years 1935 to 2006. The table below shows the photo titles, years, and image sources.

Individual images (1 through 5) of selected areas are followed by two sequences of photos showing the same geographic areas at similar scales, over a period of years. Comparisons between images within the sequences allows changes in land use and development intensity to be visually charted over time.

The first sequence of five photos (6a through 6e), from 1935 to 2006, covers an area in the northeastern portion of East Portland generally bounded by the Columbia River to the north, E Burnside to the south, NE 118th to the west, and NE 158th to the east. Portions of the images highlighted in green indicate areas where changes in land use intensity occurred after the date of the previous photo in the sequence. They show, for instance, places where larger agricultural tracts were divided into smaller "gentlemen's farms," or where agricultural land was converted to residential or industrial uses. The highlights are not additive; they reflect only changes from the previous map. The highlights are based on a visual inspection of the photos and not on quantitative data such as building permit or plat records. As such, they are meant to provide a broad impression, not a precise record.

The second sequence of three images (7a through 7c), from 1936 to 2006, shows an area in the southern portion of East Portland generally bounded by SE Division to the north, SE Mt. Scott Blvd. to the south, SE 82nd to the west, and SE 145th to the east (the 1936 photo only shows a part of this area). Land use changes have not been highlighted in this sequence.

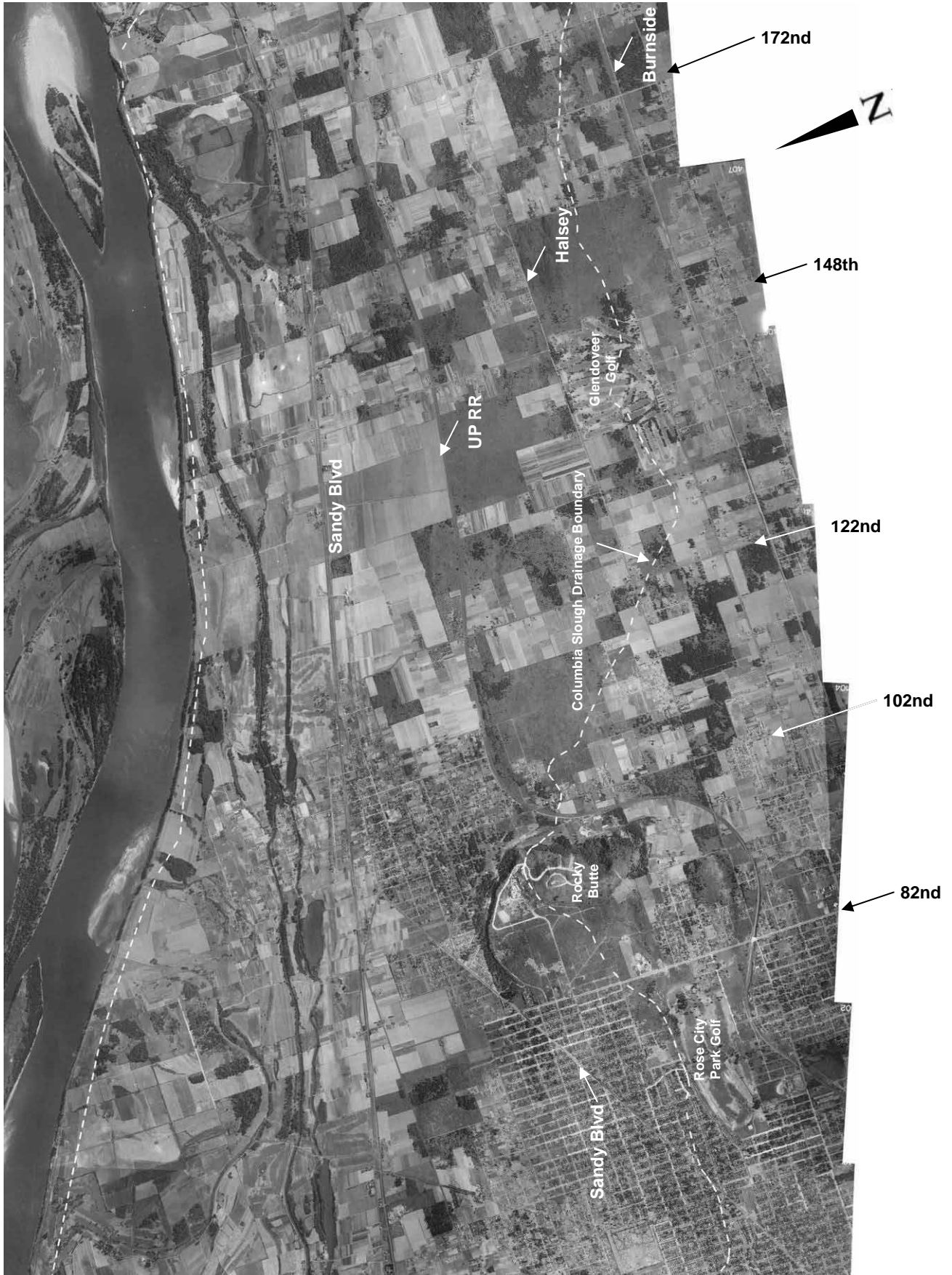
Following the photos is a table that briefly describes the coverage and content of two additional series of aerial photos from 1945 (U.S Coast and Geodetic Survey) and 1960 (Metropolitan Service District) covering parts of the study area. These are available for viewing at the Research Library of the Oregon Historical Society, but have not been digitized.

Many additional aerial photographs spanning various years and locations are available from the U.S. Geological Survey. They can be identified by location and extent (in some cases assisted by low resolution preview images) and ordered for a fee at the following web site: <http://eros.usgs.gov/products/aerial.html>

No.	Title/Year	Photo Source
1	East Portland - North, 1935	Portland Bureau of Environmental Services
2a	East Portland - Central (a), 1936	Portland Bureau of Planning
2b	East Portland - Central (b), 1936	Portland Bureau of Planning
3	Portland International Airport Area, 1948	Portland Bureau of Environmental Services
4	East Portland - North & Central, 1951	U.S. Geological Survey
5	East Portland - West/Central, 1960	Portland Bureau of Planning
6a	East Portland - North Sequence, 1935	Portland Bureau of Environmental Services
6b	East Portland - North Sequence, 1951	U.S. Geological Survey
6c	East Portland - North Sequence, 1960	U.S. Geological Survey
6d	East Portland - North Sequence, 1996	Portland Bureau of Planning
6e	East Portland - North Sequence, 2006	Portland Bureau of Planning
7a	East Portland - South Sequence, 1936	Portland Bureau of Planning
7b	East Portland - South Sequence, 1952	U.S. Geological Survey
7c	East Portland - South Sequence, 2006	Portland Bureau of Planning

Aerial 1

East Portland - North, 1935



Aerial 2a

East Portland - Central (north section), 1936



Aerial 2b

East Portland - Central (south section), 1936



Aerial 3

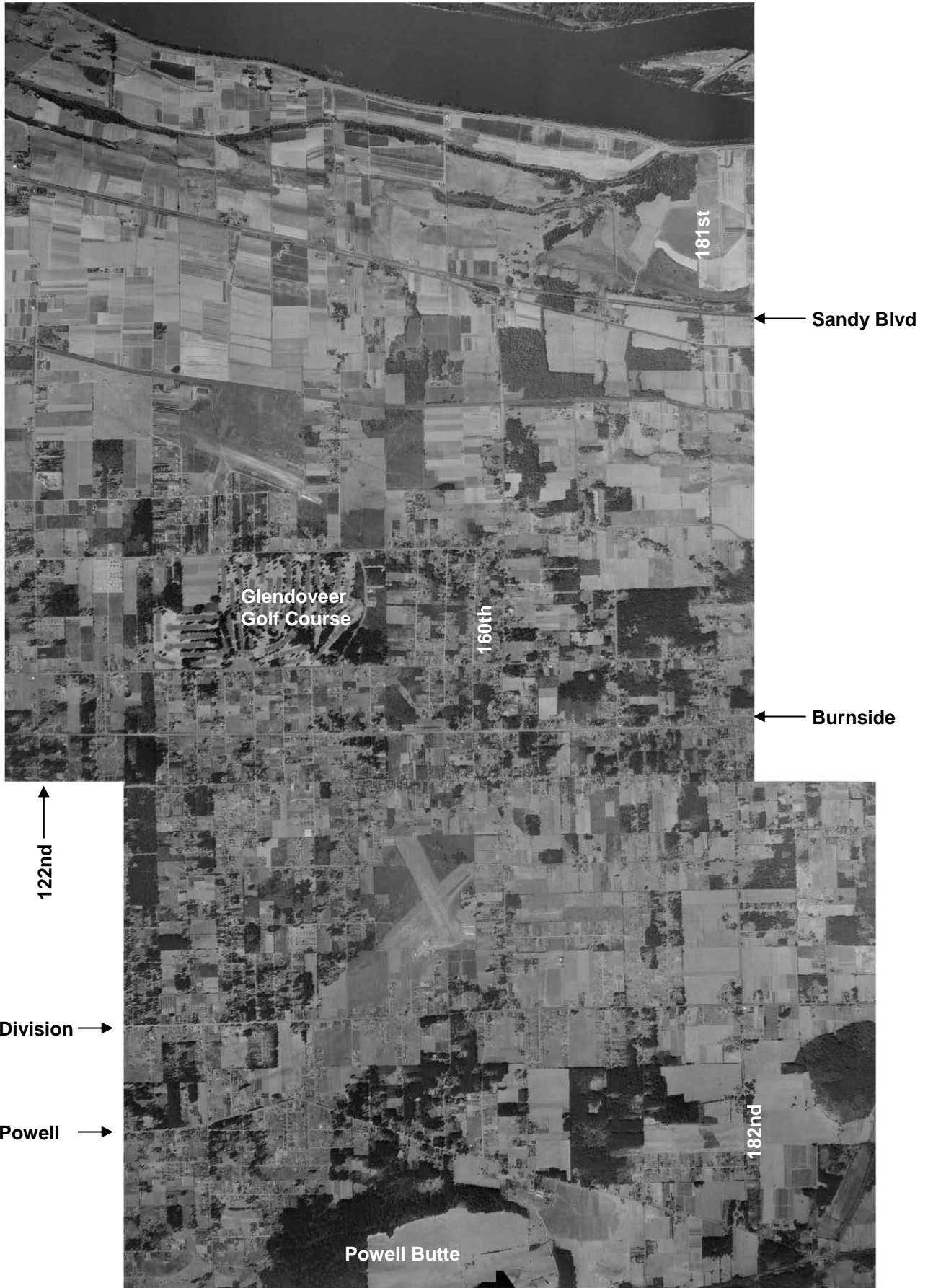
Portland International Airport Area, 1948



Selected current rights-of-ways and PDX runways and taxiways shown for orientation and comparison.

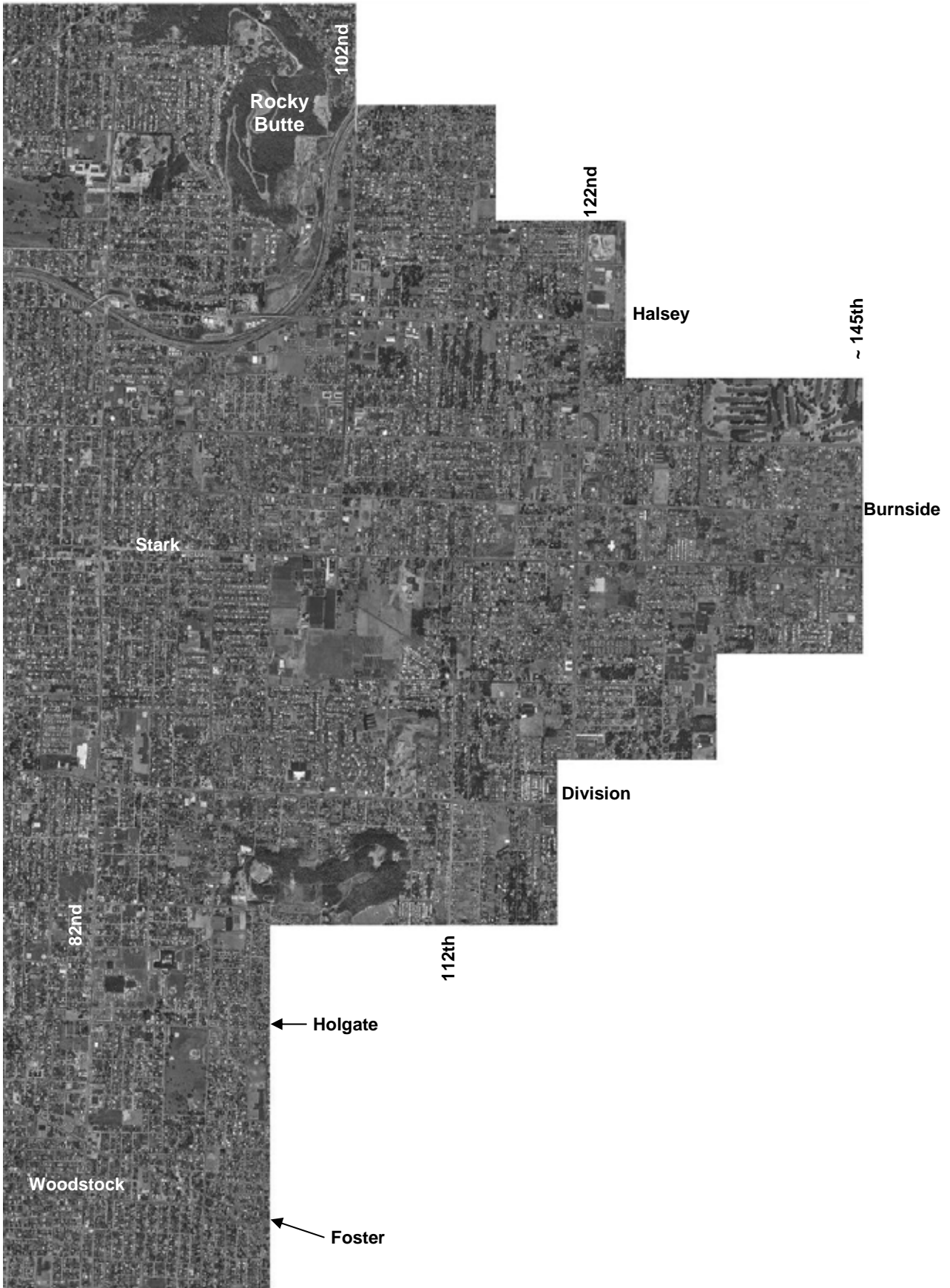
Aerial 4

East Portland - North & Central, 1951



Aerial 5

East Portland - West/Central , 1960



Aerial 6a East Portland - North Sequence, 1935



Compare sequence of photos, 6a to 6e. Green highlights show approximate areas of land use intensification since year of previous photo.

Aerial 6b

East Portland - North Sequence, 1951



Compare sequence of photos, 6a to 6e. Green highlights show approximate areas of land use intensification since year of previous photo.

Aerial 6c

East Portland - North Sequence, 1960



Compare sequence of photos, 6a to 6e. Green highlights show approximate areas of land use intensification since year of previous photo.

Aerial 6d

East Portland - North Sequence, 1996



Compare sequence of photos, 6a to 6e. Green highlights show approximate areas of land use intensification since year of previous photo.

Aerial 6e

East Portland - North Sequence, 2006



Compare sequence of photos, 6a to 6e. Green highlights show approximate areas of land use intensification since year of previous photo.

Aerial 7a

East Portland - South Sequence, 1936



Compare sequence of photos, 7a to 7c.

Aerial 7b

East Portland - South Sequence, 1952



Compare sequence of photos, 7a to 7c.

Aerial 7c East Portland - South Sequence, 2006



Compare sequence of photos, 7a to 7c.

Notes on Selected East Portland Aerial Photographs

1960 Metropolitan Service District Aerial Photos Location: Oregon Historical Society Research Library

Map	Location	Notes
21-06	Powell Butte Area	The land is forested around Powell Butte. A number of widely spaced farm homes, many with long driveways, are noticeable. Most of the area is cultivated farm fields.
21-07	North of 21-06	More forest, rural development, and farm fields like map 21-06
21-08	North of 21-07	Areas of post-war Suburban development with larger yards, especially south of Division Street in Centennial Neighborhood. Surrounding area farm fields rather than forest with rural homes.
21-09	North of 21-08	Post-war suburban development and denser rural development and farms along Stark Street.
21-10	North of 21-09	Older, denser rural development, some smaller post-war suburban development.
21-11	North of 21-10	Large area south of Columbia River large farm fields. Appears to be some industrial development along Columbia Blvd.
20-08	Powell Butte and Johnson Creek area east of 21-06	Some post-war development along individual straight streets off established country roads. A number of homes along Johnson Creek.
20-09	North of 20-08 Area North of Foster along 138 th Ave.	Some post-war development along individual straight streets off established country roads. Rest of area scattered homes and farm fields.
20-10	North of 20-09	Same type of character as 20-09.
20-11	North of 20-10 Area South of Glenview Golf Course	Semi-rural mixed era development. Some small to moderate size post-war suburban development. Still many large lots.
20-12	North of 20-11 North of Glenview Golf Course along Banfield Freeway	New post-war suburban development between Golf Course and Freeway. Still some large rural lots. North of Banfield Freeway still fields. Good examples of landscape before and after post-war suburban development.
20-13	North of 20-12	Still rural with sparse development. Large fields with few trees.
20-14	North of 20-13	Same character of 20-13, only along Columbia River.
19-11	Area around Powell and Holgate Blvds. Along 112 th Ave.	Semi-rural mixed era development. Shows Richardson Village, an large post-war suburban development with ranch style homes Powell and Holgate Boulevards along 112 th Avenue in the Powellhurst-Gilbert Neighborhood. Other smaller post-war suburban developments. North and East of Richardson Village is still mostly rural farm fields.
19-12	North of 19-11 Between Division and Burnside West of 138 th Ave.	Denser development. Post-war suburban streets, still many large lots. Appears to be a new school in the area.
19-13	North of 19-12	Mostly same character as 19-12. Newer large suburban shopping center at the corner of NE Halsey and NE 122 nd Avenue. Both roads are five lanes. A good amount of trees in some subdivisions to the East of the map area.
19-14	North of 19-13 Between Sacramento Street and Columbia Blvd along Banfield Freeway	Probably best example of changes and different characters of the area in 1960. -New post-war suburban tracts area directly south of Banfield Freeway. Some large subdivisions and also smaller developments -Dense earlier subdivisions North of Freeway to the West -Large lot earlier subdivision South of Freeway to the West -New school just south of Freeway -Freeway interchange -Rural development, older. Further south of freeway and to the west. -Large open fields, North of freeway to the East.
18-12	West of 19-12	Forested areas, large stack of logs at lumber mill visible towards center of map area.
18-13	North of 18-12	Earlier suburban development in Lents, some post-war development with cul-de-sacs.
18-14	North of 18-13	Same character of 18-13.
18-15	North of 18-14	Mixture of earlier and post-war suburban development. Shows some of the homes removed for I-205. Morningside Hospital (now Mall 205) along Stark with surrounding fields to the south and east.
18-16	North of 18-15 Rocky Butte Area	Rocky Butte, with road but no development. Parkrose neighborhood has some post-war suburban development. Woodland Park development looks somewhat isolated.
18-17	North of 18-16	Mixture of older denser development. Industrial activity evident.
18-18	North of 18-17	Large farm fields, few trees.

1945 US Coast & Geodetic Survey Aerial Photos Location: Oregon Historical Society Research Library

Map	Location and Notes
1136	Rectangular residential blocks along Sandy Blocks in what is now the Cully Neighborhood. Large fields north towards Columbia River.
1142	Rural land around Kelly Butte and Lents
1141	Lents and some surrounding area. Rectangular residential blocks. Some rural fields. Shows some of the area displaced by I-205.
1140	Same type of development as 1141.
1139	Mt. Tabor and a lot of field. No trees evident to the east
1233	Large farm fields along the Columbia River
1232	Area that is now Parkrose before it was build. Some rural homes with fields.
1186	Russellville area. Glenview Golf Course and a few rectangular residential blocks. Rural, mostly fields with some stands of trees.

Appendix C: East Portland Historical Timeline

1805/6	Lewis & Clark describe and interact with Chinookans along the Columbia River in and near East Portland
1825	'Great Burn' Forest Fire scorches the area (Mills, 3)
1826	Another large forest fire scorches the area (Mills, 3)
1841	First Oregon Trail Pioneers arrive in Willamette Valley
1846	English immigrant Thomas Cully settles along Columbia Slough.
1848	First burials in Powell Grove Cemetery at what is now NE Sandy Blvd and NE 122 nd Ave. (Metro)
1850	Donation Land Claim Act
1853	May 28 meeting held at Johnson's Mill to consider opening wagon road to Portland, which would later become Foster Road (Chapman)
1854	Clackamas County approves construction of Baseline Road, now SE Stark Street. Stone markers, some of which can still be seen today. (Hazelwood 1996 Plan, 4)
1854	December 22 Multnomah County created by territorial legislature (David Douglas, 12)
1855	Isaac Williams makes Donation Land Claim between what is now SE 72 nd and 82 nd and SE Harold and Flavel (Mt.Scott-Arleta 1996 Plan, 16-17)
1856	Thomas Cully makes Donation Land Claim along Columbia Slough (Cully 1992 Plan, 8)
1861	Whitaker School founded in Cully Neighborhood (Cully 1992 Plan, 9)
1867	Brainard Cemetery founded at what is now NE Glisan and NE 90 th Ave. in Montavilla. (Metro)
1877	Columbia Pioneer Cemetery founded at what is now NE Sandy Blvd and NE 99 th Ave. in Argay.
1882	Little Homes No. 2 platted, first subdivision in Brentwood-Darlington (Brentwood-Darlington 1992 Plan, 13)
1883	Rigler Primary School founded in Cully Neighborhood (Cully 1992 Plan, 9)
1884	Extant commercial building at SE MLK Blvd. and Oak completed by Thomas Cully (Cully 1992 Plan, 8)
1889	Montavilla platted (MacColl, 106)
1892	Lents platted and named after Oliver P. Lent
1892	Steam powered streetcar comes to Lents (Lents 1995 Plan, 3)
1894	County Road 602 established, later 52 nd Ave. Important to Brentwood-Darlington development (Brentwood-Darlington 1992 Plan, 15)
1900	Jail Facility completed on Kelley Butte (David Douglas, 12)
1901	Lents streetcar electrified (Lents 1995 Plan, 3)
1902	Lents school house burned (Plympton)
1903	Arleta Park Subdivision platted in what is now Mt. Scott-Arleta. (Mt. Scott-Arleta 1996 Plan, 21)
1904	Morning Side Hospital Opens to provide care for mentally ill patients from the Alaska territory (David Douglas, 22)
1905	Jewish Cemetery established at SE 67 th and Nehalem in Brentwood-Darlington. (Brentwood Darlington 1992 Plan, 12)
1906	Montavilla votes for annexation to Portland, (MacColl, 106)
1907	Rose City plat filed (Cully-Parkrose 1986 Plan, 6)
1907	Last major forest fire burns in area (Mills, 3)
1908	Buckley School founded at corner of 124 th Ave and Division in Mill Park Neighborhood (Mill Park 1995 Plan, 3)
1910	Errol Heights subdivision platted in what is now Brentwood-Darlington (Brentwood-Darlington 1992 Plan, 13-14)
1910	Gill Bros. Seed Company started, an important area company. (David Douglas, 137)
1911	Parkrose plat filed (Cully-Parkrose 1986 Plan, 6)
1912	November, Lents votes to join city of Portland, (MacColl, 106)
1914	Mt. Scott parents shut down schools protesting mandatory vaccination (Johnston, 191)
1924	First Zoning Code goes into effect in Portland (MacColl, 107)
1924	Buckley School closes (Mill Park 1995 Plan, 3)
1926	May, City approves street-widening bond encouraging development to move east (MacColl, 341)
1927	Centennial Neighborhood established as the Lynch District (Centennial 1995 Plan,1)
1930	Stark Street, formerly Baseline Road widened and paved. (David Douglas, 181)
1931	John and Lilla Leach buy Sleepy Hollow, now Leach Botanical Garden (David Douglas, 25)
1935	Parkrose Fire District #2 Formed, first rural fire district with own coverage in the area. (David Douglas, 20)
1937	August, 82 nd Avenue rezoned commercial (MacColl, 108 and 507)
1941	Jail completed on Rocky Butte (David Douglas, 14)
1945	Perry family starts a small grocery store at 13055 SE Division (David Douglas, 241)
1948	May Vanport Flood caused many to look for new housing, including what is now outer East Portland (David Douglas, 115)
1949	Log cabin structure built at 1027 NE 122 nd Ave (David Douglas, 82)
1950	December Truss-Fab plant, a maker of pre fab housing components, in Brentwood-Darlington burns in major fire (Brentwood-Darlington 1992 Plan, 15.

1952	Cherry Blossom Park in Hazelwood Neighborhood show off in Parade of Homes (Hazelwood 1996 Plan, 4)
1953	Sacagawea Primary School founded in Cully Neighborhood (Cully 1992 Plan, 9)
1954	August 17 th , grand opening of Gateway Fred Meyer
1955	October 1, The Banfield Freeway between 42 nd Avenue and Troutdale is open (Kramer, 16)
1956	Kelly Butte Civil Defense Center opens and is designed to withstand a "near miss" by up to a 20 megaton bomb and sustain city and county operations for 90 days. (Auditor's Portland Historical Outline)
1958	PRL&P abandon East Side passenger service on Belrose Line (MacColl, 109)
1958	March, Midland Branch of Multnomah County Library opens (David Douglas, 31)
1959	Portland's second zoning code enacted (Auditor's Portland Historical Outline)
1960	Eastport Plaza opens (Oregonian, 12/16/87)
1960	Obie's, the first in a chain of family buffet restaurants opens at 122 nd and Division. Company remained in business until 1982. (David Douglas, 262)
1961	Attempt to annex Errol Heights (now Brentwood-Darlington) fails (Brentwood-Darlington 1992 Plan, 18)
1962	Columbus Day storm ravages area (David Douglas, 110)
1969	Gill Bros. Seed Company Fire. Burnt out area later became part of Gateway Shopping Center (David Douglas, 220)
1969	April Construction begins on Mall 205 on the former site of Morningside Hospital. It would become the first enclosed, climate controlled shopping center in Oregon. (David Douglas, 310)
1971	Attempt to annex Errol Heights (now Brentwood-Darlington) fails (Brentwood-Darlington 1992 Plan, 18)
1971	1971 Errol Heights Improvement Association formed (Brentwood-Darlington 1992 Plan, 17)
1974	Construction of I-205 reaches Multnomah County line (Kramer, 59)
1975	Foster/Woodstock Couplet completed altering the flow of traffic in Lents (Lents 1995 Plan, 5)
1977	Attempt to annex Errol Heights (now Brentwood-Darlington) fails (Brentwood-Darlington 1992 Plan, 18)
1977	Hazelwood Community Group formed (Hazelwood 1996 Plan, 5)
1978	December 28, United Airlines plane crashes near SE 157 th and Burnside (David Douglas, 33)
1980	Interstate 80N renamed Interstate 84 (Kramer, 50)
1985	Cully Neighborhood annexed by the City of Portland (Cully 1992 Plan, 9)
1986	Portions of Hazelwood Neighborhood annexed to the City of Portland (Hazelwood 1996 Plan, 5)
1986	Annexation of Errol Heights concludes, neighborhood association changes name to Brentwood-Darlington to better represent larger subdivisions in the neighborhood. (Brentwood-Darlington 1992 Plan, 19)
1987	Mill Park Neighborhood Association officially recognized by the City of Portland (Mill Park 1995 Plan, 5)
1987	December, Cully Neighborhood Association officially recognized by the City of Portland (Cully 1992 Plan, 9)
1994	The process of Portland annexing Hazelwood Neighborhood Completed (Hazelwood 1996 Plan, 5)
1998	September, Lents Town Center Urban Renewal Area created (PDC)
2001	June, Gateway Regional Center Urban Renewal Area created (PDC)

Appendix D: East Portland Federal Land Patents

Includes Donation Land Claims. Many claims were occupied and improved by settlers for years, or even decades, prior to the final patent issue date.

Source: <http://www.glorerecords.blm.gov/>

Township 1N2E			
Patentee Name	Issue Date	Doc. Nr.	Accession/Serial Nr.
ANDERSON, WILLIAM L	9/13/1909	0830	78695
BAKER, MORRIS	12/10/1864	80623	OROCOA 042712
BARKER, HIRAM	4/19/1881	5015	OROCOA 043044
BARKER, SUSAN	4/19/1881	5015	OROCOA 043044
BARNARD, OBED M	1/20/1871	107174	OROCOA 042972
BARNARD, OBED M	5/2/1870	683	OROCOA 042957
BARNARD, ORED M	9/2/1872	77408	OROCOA 042991
BARR, SAMUEL E	7/1/1869	25102	OROCOA 042928
BUCHANAN, GEORGE A	5/2/1870	58	OROCOA 042955
BUCKENSTOS, JACOB HEIRS OF	1/24/1866	1021	OROCOA 040602
BUCKENSTOS, SARAH L	1/24/1866	1021	OROCOA 040602
BURK, ERVIN	3/22/1866	1513	OROCOA 042837
BURK, HARRIET C	3/22/1866	1513	OROCOA 042837
BURRAGE, CHARLES W	11/20/1865	244	OROCOA 042720
BURRAGE, CHARLES W	6/1/1866	282	OROCOA 042863
BYBEE, JAMES	8/5/1869	654	OROCOA 042947
CASON, DELILIA	11/10/1874	4308	OROCOA 043026
CASON, HILLERY	11/10/1874	4308	OROCOA 043026
CHISHOLM, JOHN	7/1/1861	55	OROCOA 042671
CLARK, CHARLES	12/1/1871	978	OROCOA 040726
CLARY, J V	10/15/1862	48004	OROCOA 042673
CULLY, REBECCA J	1/18/1866	997	OROCOA 042723
CULLY, THOMAS	4/6/1866	86432	OROCOA 042850
CULLY, THOMAS	1/18/1866	997	OROCOA 042723
CUPPY, ANDREW	1/5/1869	24890	OROCOA 042895
DANVERS, WILLIAM	6/14/1877	3386	OROCOA 043035
DAVIDSON, ELIJAH B	1/24/1866	1008	OROCOA 040597
DAVIDSON, SALOMA	1/24/1866	1008	OROCOA 040597
DUFUR, ANDREW J	5/15/1869	473	OROCOA 042899
EBINGER, WILLIAM A	12/21/1863	134	OROCOA 042677
EBINGER, WM A	12/21/1863	138	OROCOA 042680
FINSTAMAKER, JOHN	6/1/1866	185	OROCOA 042856
FISHER, SOLOMON W	5/15/1869	487	OROCOA 042903
FISHER, SOLOMON W	5/2/1870	715	OROCOA 042960
FLEMING, JESSE	1/24/1866	1004	OROCOA 042778
FS	12/31/1936		ORORAA 042654
GILHAM, MARECY	10/15/1873	3916	OROCOA 043009
GILHAM, NEWTON D	10/15/1873	3916	OROCOA 043009
GRAY, FRANKLIN B	12/1/1871	1017	OROCOA 042989
GRAY, GEORGE B	3/19/1866	1420	OROCOA 042828
HALL, WILLIAM	1/24/1866	1007	OROCOA 040594
HAMILTON, EDWARD	7/1/1869	25102	OROCOA 042928
HAMILTON, ELIZABETH	1/24/1866	1003	OROCOA 042774
HAMILTON, GEORGE	1/24/1866	1003	OROCOA 042774
HAY, CLARK	5/5/1873	3117	OROCOA 042996
HAYDEN, GAY	12/21/1863	119	OROCOA 042674

Township 1N2E

Patentee Name	Issue Date	Doc. Nr.	Accession/Serial Nr.
HILL, ISAAC	10/1/1869	7	OROCOA 040705
HILL, LORENZO D	2/10/1874	1320	OROCOA 043022
HOLTGRIERE, HENRY	3/8/1866	1390	OROCOA 042823
KERNS, LOIS B	7/21/1873	3550	OROCOA 043001
KERNS, WILLIAM	7/21/1873	3550	OROCOA 043001
LADUM, E H	11/30/1977	11301977	OROR 017366FD
LEBO, JACOB	9/9/1871	103174	OROCOA 042982
LONG, GEORGE M	1/18/1866	998	OROCOA 042725
LUTHER, ALBERT	10/19/1859	531	OROCOA 042667
MANNING, FRANCIS M	7/15/1878	1490	OROCOA 043039
MCKAY, SAMUEL	1/5/1869	24890	OROCOA 042895
MILLARD, ELIZABETH	1/18/1859	138	ORORAA 040524
MILLARD, GIDEON	1/18/1859	138	ORORAA 040524
MONAGHAN, TERENCE	11/25/1873	345	OROCOA 043018
MUELLER, JOHN	6/20/1870	81235	OROCOA 042965
OREGON STATE	12/21/1871	1	OROCOA 001100
OREGON STATE	2/14/1859	2141859	ORORAA 000050
OREGON STATE	8/25/1890	SG3	OROCOA 000077
OREGON STATE	10/10/1891	SG5	OROCOA 043059
POWELL, DAVID	1/24/1866	1001	OROCOA 042738
POWELL, DAVID	1/20/1871	107174	OROCOA 042972
POWELL, DAVID	1/10/1865	179	OROCOA 042715
POWELL, JACKSON	12/10/1864	69773	OROCOA 042709
POWELL, JOHN	1/18/1866	1000	OROCOA 042737
POWELL, JOHN	4/15/1864	131	OROCOA 042687
PROTZMAN, LOUIS F	4/15/1864	144 1/2	OROCOA 042693
PULLEN, ANDREW	7/24/1873	3715	OROCOA 043005
PULLEN, MARTHA JANE	7/24/1873	3715	OROCOA 043005
QUIMBY, EBENEZER L	1/18/1866	999	OROCOA 042731
QUIMBY, ELMIRA M	1/18/1866	999	OROCOA 042731
QUINN, JOHN	1/24/1866	1005	OROCOA 040591
READ, LEWIS	1/18/1859	238	OROCOA 042662
RENNISON, ISAAC	6/24/1882	2531	OROCOA 040745
RENNISON, MARY	6/24/1882	2531	OROCOA 040745
ROFS, SHERRY	10/15/1862	48004	OROCOA 042673
SCHRAMM, CHARLES G	10/4/1875	4584	OROCOA 043029
SCHRAMM, MALINDA A	10/4/1875	4584	OROCOA 043029
SHIELS, THOMAS	8/5/1869	600	OROCOA 042939
SMITH, GEORGE W	5/10/1864	100691	OROCOA 042697
SMITH, GEORGE W	5/10/1864	101189	OROCOA 042704
SPARROW, SOLOMON	5/10/1864	100906	OROCOA 042701
STEVENSON, CHARLES	1/24/1866	1006	OROCOA 042795
STOWELL, HAMILTON	4/15/1864	125	OROCOA 042683
STOWELL, HAMILTON	12/10/1864	69773	OROCOA 042709
STREET, ISAAC F	9/9/1871	103174	OROCOA 042982
STREET, ISAAC F	6/1/1866	279	OROCOA 042858
STREET, ISAAC F	6/1/1866	319	OROCOA 042869
STREIBIG, MARY	5/10/1864	100906	OROCOA 042701
SWIFT, HENRY	1/18/1876	3363	OROCOA 043032
SWIFT, JANE	1/18/1876	3363	OROCOA 043032
SWITZLER, JEHN	10/19/1866	2305	OROCOA 042873
THAYER, FRANCE C	5/10/1864	101189	OROCOA 042704
THAYER, SOLOMON	5/10/1864	101189	OROCOA 042704

Township 1N2E

Patentee Name	Issue Date	Doc. Nr.	Accession/Serial Nr.
TOOHILL, JOHN	4/6/1866	86432	OROCOA 042850
USA	11/30/1977	11301977	OROR 017366FD
VICKERS, LEONARD B	9/30/1865	560	OROCOA 042718
WEBBER, HENRY	12/10/1864	80623	OROCOA 042712
WELCH, JOEL	9/2/1872	77408	OROCOA 042991
WETHERBY, GEORGE	9/13/1909	0830	78695
WHITAKER, ANTHONY	2/4/1867	2871	OROCOA 042877
WHITAKER, ISABELLA	2/4/1867	2871	OROCOA 042877
WICK, HENRY	6/20/1870	81235	OROCOA 042965
WILKS, ELIZABETH	1/24/1866	1002	OROCOA 042763
WILKS, WILLIAM G	1/24/1866	1002	OROCOA 042763
WILLIAMS, JOHN A	3/22/1866	1586	OROCOA 042845
WILLIAMS, NANCY	3/22/1866	1586	OROCOA 042845
WILSON, ANDREW	2/10/1871	108	OROCOA 042978

Township T1S2E

Patentee Name	Issue Date	Doc. Nr.	Accession/Serial Nr.
ABRAHAM, JAMES	6/13/1873	3417	OROCOA 043187
ABRAHAM, JANE	6/13/1873	3417	OROCOA 043187
BATTIN, THOMAS	12/1/1871	788	OROCOA 043141
BLUM, LOUIS C	6/25/1872	1086	OROCOA 043157
BUCKLEY, JOHN C	2/10/1883	1528	OROCOA 043644
BURRELL, N S	9/10/1861	85875	OROCOA 043073
CAMPBELL, HIRAM T	12/1/1871	893	OROCOA 043142
CAMPBELL, WILLIAM J	1/21/1890	2151	OROCOA 043651
CASON, WILLIAM A	1/18/1866	970	OROCOA 043083
CLARK, JOHN C	12/1/1871	975	OROCOA 043144
CORWIN, WILLIAM	3/22/1866	1505	OROCOA 041708
CRESWELL, AVIS MARIA	3/22/1866	1517	OROCOA 043099
CRESWELL, EBENEZER HEIRS OF	3/22/1866	1517	OROCOA 043099
CUNNINGHAM, JOHN	10/15/1862	82592	OROCOA 043082
DAVIDSON, JOHN E	1/10/1870	34557	OROCOA 043106
DEAN, CHARLES S	9/10/1861	85875	OROCOA 043073
DOLSON, CHARLES	4/15/1874	46070	OROCOA 043216
DOLSON, CHARLES	3/20/1875	46070	OROCOA 043216 01
ELLIOTT, ADELIA M	10/15/1873	3954	OROCOA 043204
ELLIOTT, FRANCIS N	10/15/1873	3954	OROCOA 043204
FISK, LEONARD	10/15/1873	4090	OROCOA 043210
FITCH, THOMAS	3/22/1866	1506	OROCOA 043098
FREEMAN, GEORGE H	4/10/1882	1653	OROCOA 043638
FREEMAN, GEORGE H	5/10/1884	1890	OROCOA 043645
FULLER, MARTHA J	7/24/1873	3737	OROCOA 043200
FURY, HUGH	2/1/1875	510	OROCOA 043224
GATES, ALONZO	6/14/1877	4769	OROCOA 043628
GATES, CYNTHIA	7/24/1873	3705	OROCOA 043197
GATES, HAVY M	6/14/1877	4769	OROCOA 043628
GATES, JOHN	12/1/1871	771	OROCOA 043138
GATES, THOMAS W	7/24/1873	3705	OROCOA 043197
GERVAIS, B J	4/20/1882	1416	OROCOA 043639
GRANDON, ISABELL	3/18/1881	4983	OROCOA 043633

Township T1S2E

Patentee Name	Issue Date	Doc. Nr.	Accession/Serial Nr.
GRANDON, ISRAEL	3/18/1881	4983	OROCOA 043633
GRAY, ROBERT	5/5/1873	3294	OROCOA 043180
GRAY, SARAH ANN	5/5/1873	3294	OROCOA 043180
GRUBER, JOHN	11/10/1877	126	OROCOA 043629
HARPER, D	4/15/1874	46070	OROCOA 043216
HARPER, D	3/20/1875	46070	OROCOA 043216 01
HARPER, DAVID	3/20/1875	46070	OROCOA 043216 01
HARPER, DAVID	4/15/1874	46070	OROCOA 043216
HARRISON, JOHN	8/3/1882	1708	OROCOA 043642
HOLGATE, AMOS	8/3/1882	1058	OROCOA 043640
HOWARD, JOHN	11/6/1893	3724	OROCOA 043656
JOHNSON, ELIZABETH	10/19/1859	522	OROCOA 043070
JOHNSON, EZRA	11/10/1874	4323	OROCOA 043222
JOHNSON, JACOB	8/15/1876	4624	OROCOA 043254
JOHNSON, WILLIAM	10/19/1859	522	OROCOA 043070
JOT, GEORGE D	5/26/1873	325	OROCOA 043183
KELLEY, HAMPTON	3/8/1866	1374	OROCOA 043091
KELLEY, MICHAEL	4/25/1872	1132	OROCOA 043151
KELLY, ARCHON	3/19/1866	1423	OROCOA 041700
KELLY, CLINTON	3/19/1866	1424	OROCOA 041704
KELLY, MARIAH	3/19/1866	1424	OROCOA 041704
KELLY, PLYMPTON	7/24/1873	3739	OROCOA 043201
KERN, MARY ANN HEIRS OF	4/28/1875	4475	OROCOA 043229
KERN, WILLIAM	4/28/1875	4475	OROCOA 043229
KERNS, SAMUEL F	7/1/1861	10	OROCOA 043071
LASKEY, THOMAS C	1/10/1870	34557	OROCOA 043106
LENT, FREMONT L	12/1/1891	2597	OROCOA 043653
LENT, MARTHA A	9/4/1876	4663	OROCOA 043255
LENT, OLIVER P	9/4/1876	4663	OROCOA 043255
LONG, EDWARD	2/20/1866	1275	OROCOA 041694
LONG, MARTHA S	2/20/1866	1275	OROCOA 041694
MANLEY, THOMAS	10/15/1862	82592	OROCOA 043082
MARQUAM, EMMA	6/25/1878	4471	OROCOA 043631
MARQUAM, P A	6/25/1878	4471	OROCOA 043631
MCLEAN, HUGH A	6/20/1870	716	OROCOA 043112
MCMAHAN, MARTHA J	7/24/1873	3737	OROCOA 043200
MCMAHAN, SAMUEL W HEIRS OF	7/24/1873	3737	OROCOA 043200
MILLER, HENRY	10/15/1873	4155	OROCOA 043211
MILLER, MARY ANN	10/15/1873	4155	OROCOA 043211
NELSON, ELIZABETH R	10/15/1873	3982	OROCOA 043206
NELSON, LEVI W	3/18/1881	4977	OROCOA 043632
NELSON, NANCY J	3/18/1881	4977	OROCOA 043632
NELSON, SAMUEL	10/15/1873	3982	OROCOA 043206
NIMMON, EMANUEL	5/5/1873	3112	OROCOA 043160
NIMMON, JUDITH	5/5/1873	3112	OROCOA 043160
OGDEN, HARRIET E	2/26/1887	1679	OROCOA 043648
OREGON AND CALIFORNIA RR CO	5/9/1871	1	OROCOA 000290
OREGON AND CALIFORNIA RR CO	6/18/1877	5	ORORAA 001108
OREGON STATE	2/2/1872	1	OROCOA 000095
OREGON STATE	2/9/1872	2	OROCOA 000089
OREGON STATE	2/14/1859	2141859	ORORAA 000050
OREGON STATE	6/28/1876	4	ORORAA 038120
PRETTYMAN, DAVID D	6/13/1881	5084	OROCOA 043636

Township T1S2E

Patentee Name	Issue Date	Doc. Nr.	Accession/Serial Nr.
PRETTYMAN, ELIZABETH	3/22/1866	1536	OROCOA 041709
PRETTYMAN, PERRY	3/22/1866	1536	OROCOA 041709
REAM, WESLEY P	2/10/1883	1527	OROCOA 043643
RICHEY, JAMES	2/20/1877	543	OROCOA 043256
RODGERS, TERRENCE	11/17/1884	1624	OROCOA 043646
SALES, WILLIAM E	11/25/1873	366	OROCOA 043220
STARR, BENJAMIN F	7/21/1873	3563	OROCOA 043191
STARR, CATHERINE B	7/21/1873	3563	OROCOA 043191
TITUS, MARTIN HEIRS OF	10/4/1875	4558	OROCOA 043231
VANVLACK, EGBERT B	12/19/1885	1913	OROCOA 043647
WARNOCK, WILLIAM	8/3/1882	1059	OROCOA 043641
WATSON, JAMES P	1/11/1892	3212	OROCOA 043654
WILLIAMS, HESTER	7/21/1873	3589	OROCOA 043193
WILLIAMS, ISAAC	7/21/1873	3589	OROCOA 043193
WILLIS, JACOB O T	4/1/1875	529	OROCOA 043227
WILLS, GEORGE	6/27/1870	1094	OROCOA 041732
WILLS, JACOB	6/27/1870	1095	OROCOA 041736
WILLS, LORANA E	6/27/1870	1095	OROCOA 041736
WILLS, SARAH	6/27/1870	1094	OROCOA 041732
WITTEN, JOSHUA E	3/8/1866	1381	OROCOA 043092
WITTEN, NANCY	3/8/1866	1381	OROCOA 043092

Appendix E: East Portland Properties in Portland Historic Resources Inventory (1984)*

Publicly owned properties shown in *italics*.

Name/Description	Address	Year Built	Rank	Style
Columbia Rug and Upholstery Cleaners	8235 NE Beech St.	1951	--	Early Modern
Residence	8304 NE Beech St.	ca. 1925	III	California Mission Style
Trinity School	9201 NE Fremont St.	1931	II	Castellated
Shriners' Hospital for Crippled Children ¹	8200 NE Sandy Blvd.	1924	II	Twentieth Century Georgian
Sanctuary of Our Sorrowful Mother	8840 NE Skidmore St.	1924	II	Early Modern
Residence	8659 SE Foster Rd.	1922	III	Bungalow
Residence	7726 SE Foster Rd.	1884	III	Rural Vernacular
Manufacturing, retail	8816 SE Foster Rd.	ca. 1940	--	--
Automobile Service (?)	8901 SE Foster Rd.	1920 (?)	--	Brick Utilitarian
Lents Machine (transfer office, machine shop) ²	9015 SE Foster Rd.	1922	--	Mediterranean
Commercial, utilitarian	9129 SE Foster Rd.	ca. 1910 (?)	--	Wood, Post and Beam Utilitarian
Apartment house, retail	9143 SE Foster Rd.	1913	III	Italianate
Retail, market	9201 SE Foster Rd.	ca. 1910 (?)	III	Streetcar Era Commercial
Retail	9202 SE Foster Rd.	ca. 1925(?)	--	Streetcar Era Commercial
Retail	9213 SE Foster Rd.	ca. 1910 (?)	--	Streetcar Era Commercial
Grimson Garden (residence, lake) ³	16211 SE Foster Rd.	1947	II	Tract House
Residence	8604 SE Glenwood St.	1911	III	Bungalow
<i>Site of first Lents school</i>	<i>9202 SE Harold St.</i>	--	<i>Site</i>	--
Residence ⁴	8809 SE Holgate Blvd.	1914	III	Bungalow
Residence	7811 SE Knight St.	1896	--	Rural Vernacular, Queen Anne
Church ⁵	8835 SE Woodstock Blvd.	--	III	Northwest Regional Style
Site of Lents carline waiting station	9130 SE Woodstock St.	--	Site	--
<i>End of the carline, Lents</i>	<i>10200 SE Woodstock St.</i>	--	<i>Site</i>	--
Lents Junction Substation	10227 SE Woodstock Blvd.	1906	III	Brick Utilitarian
Residence	10134 SE Mt Scott Blvd.	1890		Rural Vernacular
Residence	10321 SE Mt Scott Blvd.	1953(?)	III	Bungalow
--	10306 SE Pardee St.	1939	--	Bungalow
Residence	7628 SE Reedway St.	1909	--	Bungalow
Retail, apartment house	8724 SE Yamhill St.	1915	--	Streetcar Era Commercial
Residence	4 SE 84 th Ave.	1912 (1910?)	II	Bungalow
Church	5903 SE 87 th Ave.	ca. 1905 (?)	--	--
Church	6019 SE 87 th Ave.	1911	III	Twentieth Century Gothic
Church	5921 SE 88 th Ave.	1912	III	Fifties Modern
Library, retail	5827 SE 91 st Ave.	1915	II	Bungalow
<i>Lents Park</i>	<i>4707 SE 92nd Ave.</i>	<i>1920s</i>	<i>III</i>	--
<i>Fire station⁶</i>	<i>5707 SE 92nd Ave.</i>	<i>1928</i>	<i>III</i>	<i>Bungalow (?)</i>
Retail ⁷	5716 SE 92 nd Ave.	ca. 1920 (?)	--	Streetcar Era Commercial
Social -- Order of Odd Fellows	5802 SE 92 nd Ave.	1913	III	Streetcar Era Commercial

Name/Description	Address	Year Built	Rank	Style
Social -- Lents Masonic Lodge	5811 SE 92 nd Ave.	1909	--	Streetcar Era Commercial
Retail, apartment house, school (?)	5812 SE 92 nd Ave.	1913	--	Streetcar Era Commercial
Retail, restaurant	5824 SE 92 nd Ave.	1925	--	Streetcar Era Commercial
Retail, restaurant**	5931 SE 92 nd Ave.	1902/1905	--	Western False front Vernacular
Retail, tavern	5932 SE 92 nd Ave.	ca. 1915 (?)	--	Streetcar Era Commercial
Bank, theater, retail**	5940 SE 92 nd Ave.	1907	III	Streetcar Era Commercial
Theater, Union Gospel Mission, commercial	5942 SE 92 nd Ave.	1909(?)	--	Streetcar Era Commercial
Residence	6228 SE 92 nd Ave.	1906	--	Bungalow
Residence (?), church (?)	6324 SE 92 nd Ave.	1936	--	English Cottage
Residence	6404 SE 92 nd Ave.	1922	III	Bungalow
Retail ⁸	6333 SE 100 th Ave.	1913	III	Streetcar Era Commercial
<i>Residence, garden, Sleepy Hollow/Leach Botanical</i>	<i>6704 SE 122nd Ave.</i>	<i>1936</i>	<i>I</i>	<i>English Cottage</i>
Hitching Post (stables, riding academy, arena and barn)	6729 SE 162 nd Ave.	--	--	Wood Utilitarian
<i>Madison High School</i>	<i>2735 NE 82nd Ave.</i>	<i>1955</i>	<i>II</i>	<i>Fifties Modern</i>
<i>Marshall High School</i>	<i>3905 SE 91st Ave.</i>	<i>1960</i>	<i>II</i>	<i>Fifties Modern</i>

*Only those parts of the study area that were within Portland corporate limits before about 1980 were surveyed for the Historic Resources Inventory.

1 Demolished 2004.

2 Permit issued 5/07/01 to demolish existing building on site (old appliance repair shop).

3 Building permit for addition 05/07/04.

4 Lot listed as vacant in Portland Maps 0607/07. No record of permits.

5 Major demolition and rebuilding on site since 1984.

6 Major remodel and addition 2004-2006.

7 Store repaired after accident 2004, remodeled 2005.

8 In 2001 permit was issued to demolish building. Property has since be subdivided for infill residential development.

Appendix F: East Portland Annexations by Area & Period

See also Map 6 in Appendix A.

Area	Period	Area Annexed
Cully	1921-1930	Bounded by NE Prescott St. to NE 52 nd Ave, to NE Fremont St., to NE 47 th Ave, back to NE Prescott St.
	1961-1970	Bounded by Columbia Slough to 52 nd Ave, to NE Columbia Blvd., to NE 52 nd Ave, to NE Killingsworth Blvd., to NE 48 th Ave., to NE Sumner St., to NE 42 nd , back to Columbia Slough.
	1971-1980	Bounded by line north of NE Going St. to NE 55 th Ave., to NE Prescott St, to NE 52 nd Ave., back to line north of NE Going St.
	1981-1990	Remainder of neighborhood
Sumner	1971-1980	Bounded by Columbia Slough to NE 87 th Ave., to NE Marx Drive, to NE 82 nd Ave., back to the Columbia Slough.
	1981-1990	Remainder of neighborhood
Parkrose	1981-1990	Entire neighborhood
Argay	1981-1990	Entire neighborhood
Wilkes	1981-1990	Entire neighborhood besides small area annexed since 1991
	after 1991	A few blocks between NE Sandy Blvd. and railroad tracks from 162 nd Ave. to city limits. Bounded by NE Hancock St. to city limits, to NE Glisan St., to NE 155 th Ave., to NE Holladay St., to 157 th Ave, back to NE Hancock St.
Russell	1981-1990	Entire neighborhood
Parkrose Heights	1981-1990	Entire neighborhood
Woodland Park	1981-1990	Entire neighborhood
Madison South (E of 82 nd)	1901-1910	Bounded by NE Fremont St. to NE 92 nd Ave., to I-84, to NE 82 nd Ave., back to NE Fremont St.
	1921-1930	Lots at southeast corner of NE 82 nd Ave. and NE Sandy Blvd.
	1951-1960	Bounded by NE Sacramento St. to line east of NE 95 th Pl., to NE Schuyler St., to NE 92 nd Ave. back to NE Sacramento St.
		Bounded by line north of NE Beech St. to NE 91 st Ave., to NE Fremont St, to NE 82 nd Ave., back to line north of NE Beech St. Includes lots along NE Cadet Ave.
	1961-1970	Bounded by NE Sandy Blvd. to NE Skidmore St., to NE Rocky Butte Dr., to NE Fremont St., to NE 91 st , to line north of NE Beech St., to NE 82 nd Ave., back to NE Sandy Blvd.
		Lots adjacent to Rocky Butte Dr. between about NE Siskiyou St. and NE Russell St.
1971-1980	Eastside of NE 92 nd Ave. between NE Broadway and I-84.	
1981-1990	Remainder of neighborhood	
Montavilla (E of 82 nd)	1901-1910	Bounded by I-84 to 92 nd Ave., to Se Lincoln St., to 82 nd Ave. back to I-84.
	1941-1950	Bounded by a line south of SE Yamhill to I-205, to SE Washington St., to SE 92 nd Ave. back to line south of SE Yamhill St.
	1951-1960	Bounded by a line south of SE Yamhill to I-205, to SE Lincoln St., to SE 92 nd Ave. back to line south of SE Yamhill St.
	1961-1970	Lots on south corners of SE Lincoln St. and SE 90 th St.
		Lots on SE Lincoln St. at SE 83 rd Ave. West side of NE 92 nd Pl. from south of NE Everett St. to NE Glisan St.
	1971-1980	West side of NE 92 nd Pl. from south of NE Everett St. to E Burnside St.
1981-1990	Remainder of Neighborhood	
Hazelwood	1951-1960	Portions of I-205 right of way
	1981-1990	Generally the neighborhood west of 122 nd Ave. and north of NE Glisan St.
	after 1991	Remainder of neighborhood
Mill Park	1981-1990	Most of neighborhood except a few scattered areas in the East
	after 1991	Remainder of neighborhood
Glenfair	1981-1990	Most of the western half of the neighborhood
	after 1991	Remainder of neighborhood
Centennial	1981-1990	Area immediately south of SE Division St. North corners of SE Powell Blvd. and SE 174 th Ave.
	after 1991	Remainder of neighborhood
Powellhurst-Gilbert	1971-1980	Some lots along east side of SE 82 nd Ave.

Area	Period	Area Annexed
	1981-1990	Most of area bounded by SE Division St to SE Bush St., to east of Se 116 th Ave., to SE Holgate Blvd., to 112 th Ave., to SE Powell Blvd., to SE 82 nd Ave., back to SE Division St.
	after 1991	Remainder of neighborhood
Lents/Powellhurst-Gilbert	1959-1960	Bounded by SE Francis St. to SE 103 rd Ave., to SE Boise St., to SE 102 nd Ave. back to SE Francis St.
	1961-1970	Lots on northeast corner of SE 104 th Ave. and SE Long St.
	1981-1990	Most of the remaining neighborhood north of SE Holgate Blvd.
	after 1991	Remainder of neighborhood
Pleasant Valley/ Powellhurst-Gilbert	after 1991	Entire neighborhood
Centennial/Pleasant Valley	1971-1980	Entire neighborhood
Pleasant Valley	1961-1970	Majority of neighborhood, all areas within city limits not listed in later time periods
	1971-1980	Southeast corner of SE 112 th Ave. and SE Foster Rd.
		Area along Johnson Creek from west of SE 122 nd Ave. to SE 145 th Ave.
		Northeast and southeast corners of SE 152 nd Ave. and Se Barbara Welch Rd.
	1981-1990	Bounded by Johnson Creek to line east to of SE 131 st /133 rd Pl., to a line south of SE Flavel St., to SE 122 nd Ave., back to Johnson Creek. Bounded by SE Jenne Rd. to SE Platt St., to line east of SE Equestrian Dr., to McKinley Rd., back to SE Jenne Rd. Also includes area around the intersection of SE Jenne Rd. and SE Foster Rd.
after 1991	Area not annexed in 1971-1980 between Johnson Creek and SE Foster Rd., and between SE 117 th Pl. and SE 145 th Ave. Area just southeast of SE Henderson Way and SE 157 th Ave.	
Lents	1911-1920	Bounded by SE Boise St. to SE 102 nd Ave., to SE Flavel St., to SE 82 nd Ave., back to SE Boise St.
	1951-1960	Bounded by SE Boise St. to SE 103 rd Ave., to SE Holgate Blvd., to SE 102 nd Ave., back to SE Boise St.
	1961-1970	Large lot between line south of SE Rhone St. and SE Boise St., and between SE 86 th Ave. and SE 91 st Ave.
		Area not annexed earlier south of SE Bybee Blvd. and east of SE 92 nd Ave.
	1971-1980	Lots on north side of Woodstock Blvd. between Se 82 nd Ave. and SE 92 nd Ave.
		Bounded by line just north of intersection of SE Foster Rd. and SE Woodstock Blvd. to SE 112 th Ave., to SE Bybee Blvd., to SE 102 nd Ave. back to a line just north of intersection of SE Foster Rd. and SE Woodstock Blvd.
		Lots just south of SE Powell Blvd. between SE 82 nd Ave. and SE 86 th Ave.
1981-1990	Remainder of neighborhood north of SE Boise St. and south of SE Flavel St.	
after 1991	Remainder of neighborhood east of SE 102 nd Ave.	
Mt. Scott-Arleta	1901-1910	Entire neighborhood
Brentwood-Darlington	1901-1910	Lots just south of SE Henry St. between SE 45 th Ave. and SE 50 th Ave.
	1961-1970	Bounded by SE Duke St. to SE 62 nd Ave., to a line north of SE Rural St., to SE 57 th Ave., back to SE Duke St.
		Bounded by SE Tenino Dr. to SE 52 nd Ave., to SE Harney Dr., to SE 45 th Ave., back to SE Tenino Dr.
1981-1990	Remainder of Area	

Appendix G: Miscellaneous Data Tables

East Portland Area by Generalized Zoning

Zone	East Portland			Portland	
	Acres	Percent	Percent of Portland	Acres	Percent
Commercial	1,787	6.5%	1.9%	6,220	6.5%
Employment	816	3.0%	0.9%	2,864	3.0%
Industrial	3,298	12.1%	3.5%	18,715	19.7%
Residential MF	3,679	13.4%	3.9%	8,401	8.8%
Residential SF	14,773	54.0%	15.5%	41,502	43.6%
Residential SF+MF	18,452	67.4%	19.4%	49,903	52.4%
Open Space	2,807	10.3%	3.0%	16,794	17.6%
Other	656	2.4%	0.7%	199	0.2%
Total	27,359	100%	28.8%	95,151	100%

Source: Portland Bureau of Planning, East Portland Review

East Portland Buildings by Period Built

Period	Buildings	Percent
Prior to 1914	2,142	3.7%
1914-1940	6,566	11.2%
1941-1958	19,396	33.1%
1959 & later	24,990	42.7%
No Bldg./No Data	5,484	9.4%
Total	58,578	100%

Source: Multnomah County Assessment and Taxation.

East Portland Average & Median Lot Sizes*

Taxlots	East Portland	Percent of Portland	Portland
Number	56,920	30.6%	185,856
Average Size	11,888	118.8%	10,010
Median Size	7,433	135.2%	5,498

*Excludes lots in Open Space and Industrial zones. Source: Portland Bureau of Planning

New Residential Units, 1996-2006

Type	East Portland	Percent of Portland	Portland
Single-Dwelling	5,356	49.5%	10,826
Rowhouse/Duplex	1,801	45.7%	3,937
Multi-Dwelling	6,571	30.4%	21,613
Total	13,728	37.7%	36,376

Source: Portland Bureau of Planning, East Portland Review