

Tree Code

TREE CODE:
Implementation phase shows progress and pitfalls

September 2017

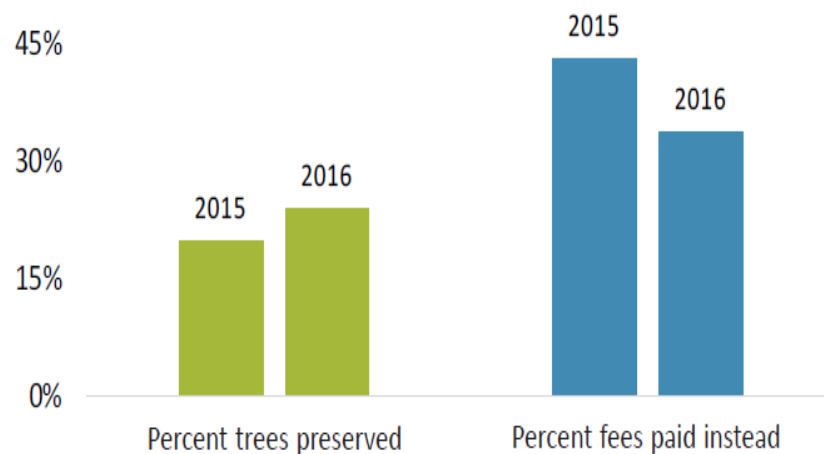


A look at whether City is on track to both effectively implement the Tree Code and to measure how well it works

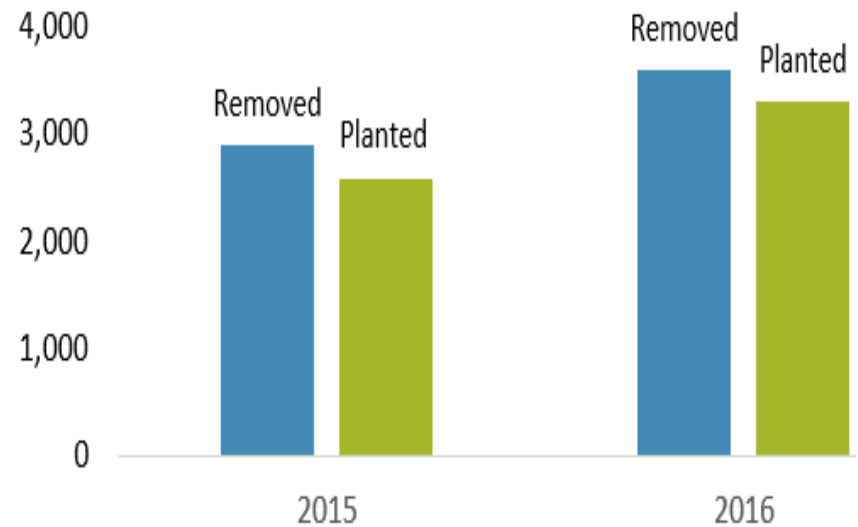
Tree Code

Better results for trees in development situations than in non-development situations

Residential demolitions: percent trees **preserved** went up from 2015 to 2016. Percent **fees paid instead of preservation** went down.

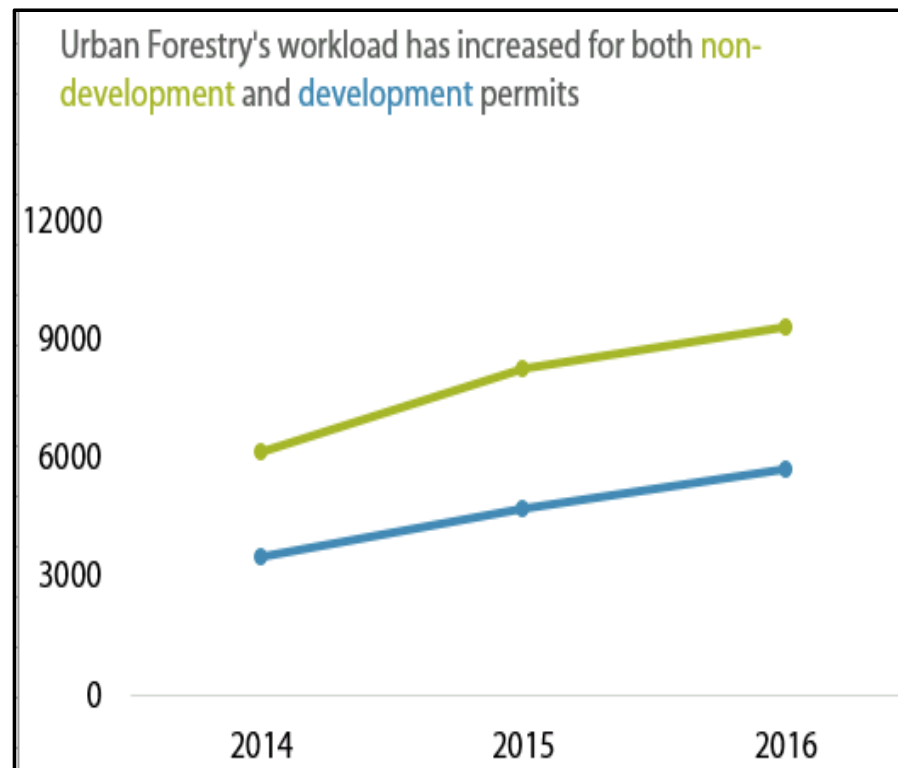


Trees in non-development situations: ten trees were **removed** for every 9 trees **planted** in 2015 and 2016



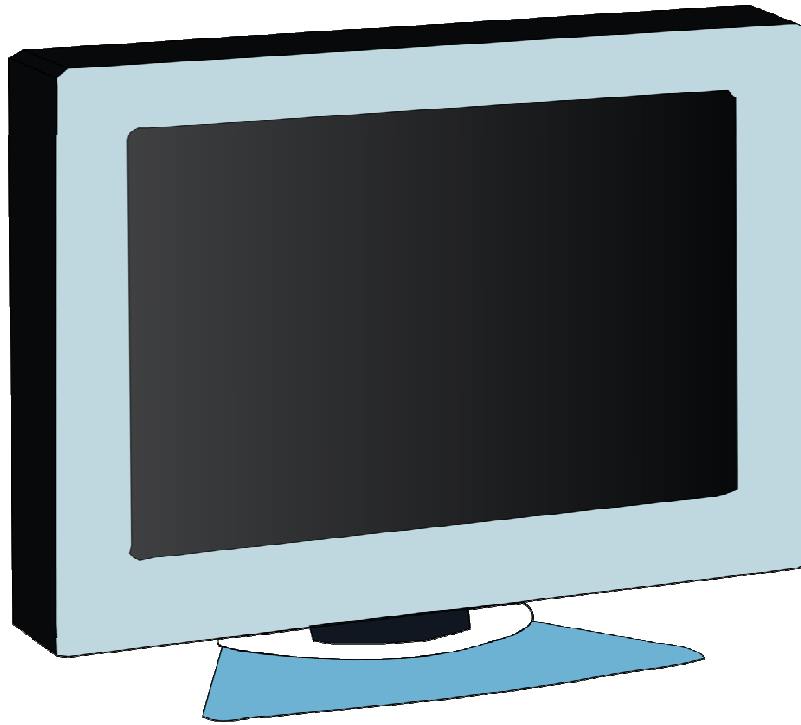
Tree Code

Increased responsibilities bring workload challenges



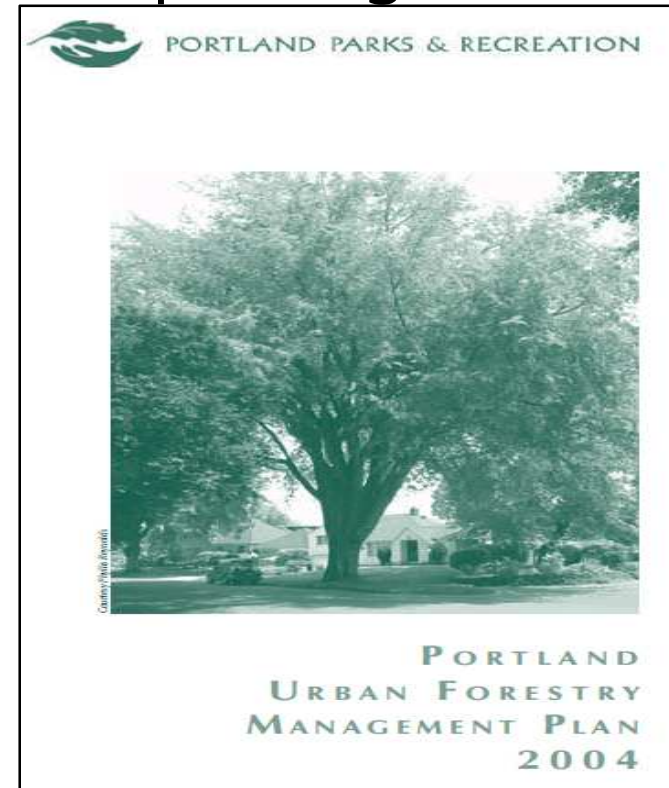
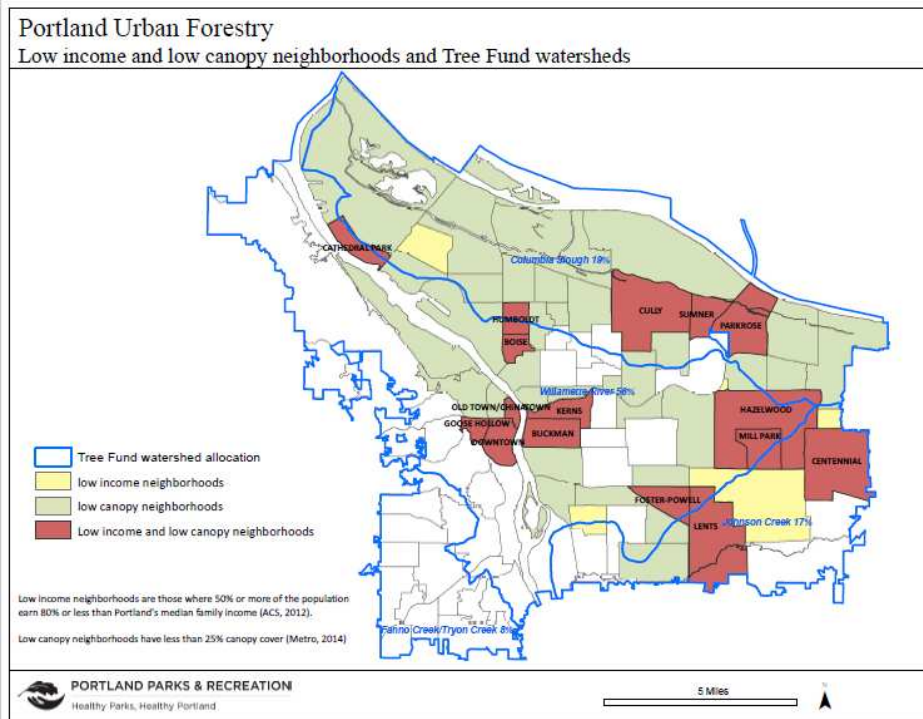
Tree Code

Outdated permitting software impairs implementation and outcome tracking



Tree Code

Approach to trees needs aligning with other priorities; key forestry plan needs updating



Tree Code



Key issues for Council:

- Use bureau-provided data and analysis to assess effectiveness of Tree Code and inform decision-making
- Address workload challenges as appropriate
- Determine funding level for new permitting system
- Ensure Tree Code and other City plans and priorities are in alignment with each other

City Council Briefing



For copies of the reports, go to the
Audit Services Division webpage at:

<http://www.portlandonline.com/auditservices>