

A WILLAMETTE LIGHT BRIGADE EVENT



PORTLAND
WINTER LIGHT
FESTIVAL

PRESENTED BY



FEB 7TH-9TH, 2019

A FREE CITY-WIDE EVENT

EASTBANK ESPLANADE / OMSI / OREGON RAIL / PSU
WORLD TRADE CENTER / SALMON SPRINGS / PEARL DISTRICT

This year our theme is *Forward* and the Willamette Light Brigade is honored to present an incredible array of artists, performers, educators, and collaborators who have created the stunning works of art on display throughout Portland. The 2019 festival is our biggest presentation to date, and features interactive light-based art installations, dynamic live performances, stunning kinetic fire sculptures and inspiring educational programming. The festival has grown exponentially since it was founded in 2016, and this year's event will take place in over 40 locations throughout the city.

We are committed to providing access to art, design and creativity to everyone by keeping the Portland Winter Light Festival free of charge. In order to do this, we are deeply grateful for the support of our sponsors, our incredible artists, our tireless volunteers, and our hard-working festival organizers. If you are able, please consider making the suggested donation of \$5-10 at pdxwlf.com to help keep the festival free of charge.

The Portland Winter Light Festival exists to build community while bringing light art and technology to inclusive audiences and invigorating Portland in the winter months. We encourage you to bundle up and come out to explore, and see Portland transformed by light and art in the dark of winter!

WELCOME TO THE FOURTH ANNUAL PORTLAND WINTER LIGHT FESTIVAL!

The Portland Winter Light Festival is FREE and open to everyone! It takes place throughout the city of Portland, and is centralized around three major zones and at various locations throughout Portland.

We strongly recommend taking public transportation to enjoy the festival events, which are centrally located for streetcar, light rail, bus, and bike access. Many locations do not have physical addresses and are located in empty lots, parks and unexpected areas. We hope you enjoy exploring Portland, and seeing the city transformed by light. There is no one area to start or stop, and the addresses below are provided to get you close to the festival so that you can make your own route.

Visit pdxwlf.com for transit planners and more navigation and visitor information.



VISITOR INFO

FESTIVAL HOURS 6-11PM

EASTSIDE ZONE

OMSI
1945 SE WATER AVE

OREGON RAIL HERITAGE FOUNDATION
2250 SE WATER AVE

CRYSTAL DOLPHIN WATER SHUTTLE DOCK
110 SE CARUTHERS ST

WEST RIVERFRONT

WORLD TRADE CENTER 2
26 SW SALMON ST

SALMON SPRINGS FOUNTAIN
AT TOM MCCALL PARK ON NAITO PARKWAY

CRYSTAL DOLPHIN WATER SHUTTLE DOCK
1000 SW NAITO PKWY

PORTLAND STATE UNIVERSITY

PSU CAMPUS AND WEST PARK BLOCKS
1620 SW PARK AVE

BUS/MAX/STREETCAR

- THE PORTLAND STREETCAR IS FREE AFTER 5PM ON ALL THREE NIGHTS OF THE FESTIVAL.
PORTLANDSTREETCAR.ORG

- VISIT THE TRIMET TRIP PLANNER TO PLAN YOUR ROUTE. THE EASTSIDE ZONE, WEST RIVERFRONT ZONE, AND PSU CAMPUS ARE ALL EASILY ACCESSIBLE BY BUS AND MAX.
TRIMET.ORG/#/PLANNER

FERRY SHUTTLE

- PORTLAND SPIRIT & EVENTS WILL BE RUNNING THEIR BOAT THE CRYSTAL DOLPHIN AS A WATER SHUTTLE THROUGHOUT THE FESTIVAL. THIS IS A FREE SERVICE FOR PDXWLF. SEE MORE INFORMATION FOR ON BOAT ENTERTAINMENT ON PAGE 8.

- THE CRYSTAL DOLPHIN WILL BE DEPARTING EVERY 30 MINUTES
EAST DOCK
110 SE CARUTHERS ST
WEST DOCK
1000 SW NAITO PKWY

WALKING

- WE ENCOURAGE YOU TO BUNDLE UP AND WALK THE FESTIVAL!
- EASTSIDE TO WESTSIDE IS APPROXIMATELY 15 MINUTES ACROSS THE HAWTHORNE BRIDGE.

BIKETOWN

BIKETOWN is offering festivalgoers
50% off a Day Pass!

USE PROMO CODE
LIGHTS19

Redeem with the BIKETOWN App: www.biketownpdx.com/app
www.biketownpdx.com



Portland Streetcar is sponsoring
FREE RIDES after 5PM, Feb 7-9!

Hop on any Streetcar in the Portland system to get to the Festival locations – no tickets required!

Free streetcar rides are for the Portland Streetcar system only.
Fare required for any TriMet MAX or bus rides.

PRESENTING SPONSOR



RADIANT SPONSORS



VENUE PARTNERS



SHIMMERING SPONSORS



SPARKLING SPONSORS



OFFICIAL MEDIA SPONSOR



DAZZLING SPONSORS



LIGHT AMBASSADORS



LUMINARY CIRCLE

Amerigas
Anonymous
Mark & Melissa Balsiger
Bora Architects
Bric
Kelsey Bunker
Don Carlson
Jonah Cohen
Deniz Conger
DECA

Jeanne Frasca
Beth Gregory
Thomas & Margaret Hacker
Harper Houf Peterson Righellis Inc.
The Inn at Northrup Station
Earl Levin
Marianne Zarkin Landscape
Architects
Mayer/Reed
Merryman Barnes Architects

Jeff Schnabel
Skanska
Ed Slavin
SRG
Larry Staver
Swinerton
Paddy Tillett
Walker Macy
ZGF

FESTIVAL TEAM

Executive Director
Artistic Director
Technical Director
Operations Director
Communications Director
People Director
General Manager
Art Coordinator
Performance Coordinator
Web Developer
Graphic Designer
Map Designer
West Technical Director
Technical Assistant
Operations Coordinator
Operations Assistant
Pop-up Bar Producer
Bar Manager
Zone Lead
Zone Lead
Storytelling Lead
West Art Lead
Survey Coordinator

Alisha Sullivan
Chris Herring
Jean Margaret Thomas
Jenna Ryan
Michelle David
Jeremy Reynolds
Narayani Matson
Misty Post
Mo McFeely
Ramon Rodriguez - rmruxdesign.com
Dave Roos - davidroos.dunked.com
Michael Wayne Miller - archanology.com
Kaya Lydamore
Dave Clay
Lukas Strong
Arianna Anchustegui
Cari Sanchez-Potter
Hayley Eiden
Katie Meyer
Meghan Bursiek
Cristie Chamberland
Dine' Redhawk
Valerie Egon

WILLAMETTE LIGHT BRIGADE BOARD OF DIRECTORS

Paddy Tillett
Ed Slavin
Jeff Schnabel
Jonah Cohen
Don Carlson
Marianne Zarkin
Kohel Haver
Mike Beard
Jamuna Golden

2019 DEVELOPMENT COMMITTEE

Rebecca Biggs
Deniz Tasdemiroglu Conger
Rebecca Kottler
Margaret Strong

SPECIAL THANKS

Available Light Photography, Kevin Balmer, Hamid Shibata Bennett, Chad Carter, Cary Corker, Dave DeGroodt, Rachel DeRosia, Erin Diskin, Ellumiglow, Commissioner Chloe Eudaly, Sean Gentry, Brooke Hoyer, Kim Kelly, Rachel Konsella, Meri Lee Photography, Chelsea McCann, Kate Merrill & CEIC, MGV Photography, Multnomah County, Kandis Nunn, PBOT, PDX Loves Signing, Pike Road Wines, Portland Parks & Recreation, Portland Opera, Becca Priddy, Prosper Portland, Mike Pullen, Riscoe Photography, Alicia J. Rose, Amy Sakurai, SCRAP, Peter Shaver, Emily Shimano, Sonali Shivdasani, Thane Stumbaugh, Dreshad Williams, Young Audiences

GETTING AROUND 1

MAP 7

WEST RIVERFRONT ZONE 11

IVAN MCLEAN, MOONSHINE EVENTS, WHAT THE FESTIVAL • FRESH SQUEEZED! • JEN FULLER STUDIOS
 TNGSTN...LITWORKS • JAMES STUART AND ERIK WALTINSEN • CHERYL LEONTINA • MOLTENSTEELMAN STUDIO
 NICKIE B. & RYAN RAMAGE OF AFTER DARK ARTS • ROY "THE WIZ" TRAMMELL • FORWARD FUNNEL
 IVAN MCLEAN, MOONSHINE EVENTS, WHAT THE FESTIVAL, LIGHTING BY SHOWCALL EVENT SERVICES • ANGRY BUDDHA STUDIOS
 ACME • DESIGN MUSEUM PORTLAND • TYLER FUQUA CREATIONS • HOLST ARCHITECTURE • HOOPERFLY
 VICTORIA WELLS AND JOSEPH WELLS • SATIS&FY • JONATHAN WRIGHT • JT THOMPSON • RAINING PHOTONS

EASTSIDE ZONE 29

RICHARD CAWLEY AND PORTAL ARTS COLLECTIVE • SAM KLEIN • FIRE SPHERE FIRE PITS • S'MORE ART CO.
 MICHAEL TALUC • CHANCE CI AND CHRIS PITZER • CHRISTOPHER CONDRA • PAIGE TASHNER • TAMI CLARK
 MATT SIPES • INZA R. WOOD MIDDLE SCHOOL ART STUDENTS • GARTH BRITZMAN AND KELSEY LOONTJER
 CLAY MCCABE, BRANDON SHAW, ELEANOR BUELL, AND SARAH MEYER • WATERLEAF ARCHITECTURE • SPARKS DESIGNS
 EICHINGER SCULPTURE STUDIO AND KOBLE CREATIVE • FIGURE PLANT • HACKER/GUILDWORKS • THIRTY CIRCLES
 FUNK-TION MEDIA • JOHN HUNTER, ANDREW WADE SMITH, BRENT WILLIAMS, JESSE ZEPEDA & AMY MEYER
 MATT SIPES AND JOSS MALLETT • AXIOM CUSTOM PRODUCTS • TAYLOR DEAN HARRISON • SAVORY LIGHTING DESIGN
 JAN CARPENTER • JCARP • SCOTT KEVA JAMES • SHOWCALL EVENT SERVICES, INC. • MINISTRY OF STUPID IDEAS
 TNGSTN...LITWORKS • JT THOMPSON • MAYER/REED, INC. • RICHARD CAWLEY SCULPTURE DESIGN • KELLY CAMPBELL
 PAUL STOFFEGEN • RICHARD MINER AND TOM BARNES • RYAN RAMAGE AND CHRIS LOHAMP OF AFTER DARK ARTS
 SETH BYRNES AND DUSTY VISIONS IN COLLABORATION WITH ALBERTA ART WORKS-MURAL ARTWORK BY KANGO AND MCTOOLS
 JUSTIN MILLER • INSTRUMENT • RICHARD CAWLEY AND PORTAL ARTS COLLECTIVE • DAVE THE MAKER • HENRY V
 IVAN MCLEAN, MOONSHINE EVENTS, WHAT THE FESTIVAL • BRYAN RESSLER • ILLUMINATING ENGINEERING SOCIETY/JESSE SMITH
 BUBBLE WAGON WITH AIRPUP SURVEILLANCE • PDX DISCO DRAGONS • JELLYFISH AND OBELISK • THE BOOTYBUMP • DUN9 B337L3
 WALKER MACY LANDSCAPE ARCHITECTS AND LUMA LIGHTING DESIGN • BUNK SANDWICHES • AFRO GALLERY

PSU 61

LIGHT AT PLAY • PSU CREATIVE CODERS • PORTLAND STATE UNIVERSITY, SCHOOL OF ARCHITECTURE, ARCH 280 DESIGN STUDIOS • HASMOOD
 LUMENAL CODE • JILL TORBERSON • WELD METAL WORKS • AXIOM CUSTOM PRODUCTS • PSU, FORTIS CONSTRUCTION, HACKER ARCHITECTS
 THE SCHOOL OF ART AND DESIGN: CORE PROGRAM • KELSEY SNOOK WITH COLLABORATORS: PSU'S FRIENDSHIP PROGRAM,
 CENTENNIAL PARK SCHOOL • HELEN GORDON CHILD DEVELOPMENT CENTER • PSU SCHOOL OF ARCHITECTURE
 TOM BENNETT & "AURORA" DORA REDMAN • SCHOOL OF ART • DESIGN VIDEO INSTALLATION CLASS • PSU CAMPUS REC
 PORTLAND STATE UNIVERSITY'S SCHOOL OF ARCHITECTURE, THE CENTER FOR PUBLIC INTEREST DESIGN, THE CITY OF PORTLAND,
 PORTLAND GENERAL ELECTRIC, MASSACHUSETTS INSTITUTE OF TECHNOLOGY • PATHLIGHTERS • PSU SCHOOL OF
 ARCHITECTURE • SCOTT CENTER CONSTRUCTION TEAM • INFLATABILL • DR. TOMAS COTIK AND DR. DAVE COLANGELO

OUT & ABOUT 73

TEOTE MEZCALERIA • CRAIG WINSLOW • STUDIO M13 • STEPHEN MILLER AND LISA DEGRACE
 ANNE F. CRUMPACKER • BLUE SKY GALLERY STAFF: ZEMIE BARR, AMANDA B. CLEM, LISA DEGRACE
 MEGAN MCKISSACK, NIGHT LIGHTS, REGIONAL ARTS & CULTURE COUNCIL • FERNANDA D'AGOSTINO, ELIZABETH LEACH GALLERY
 OREGON JEWISH MUSEUM AND CENTER FOR HOLOCAUST EDUCATION • GREEN ANCHORS PDX
 ALAN PAGE • ORI GALLERY • DANIEL B. DEBENEDETTI MODERN VELOCITY LLC • GHOST STAG

LIVE EVENTS 78

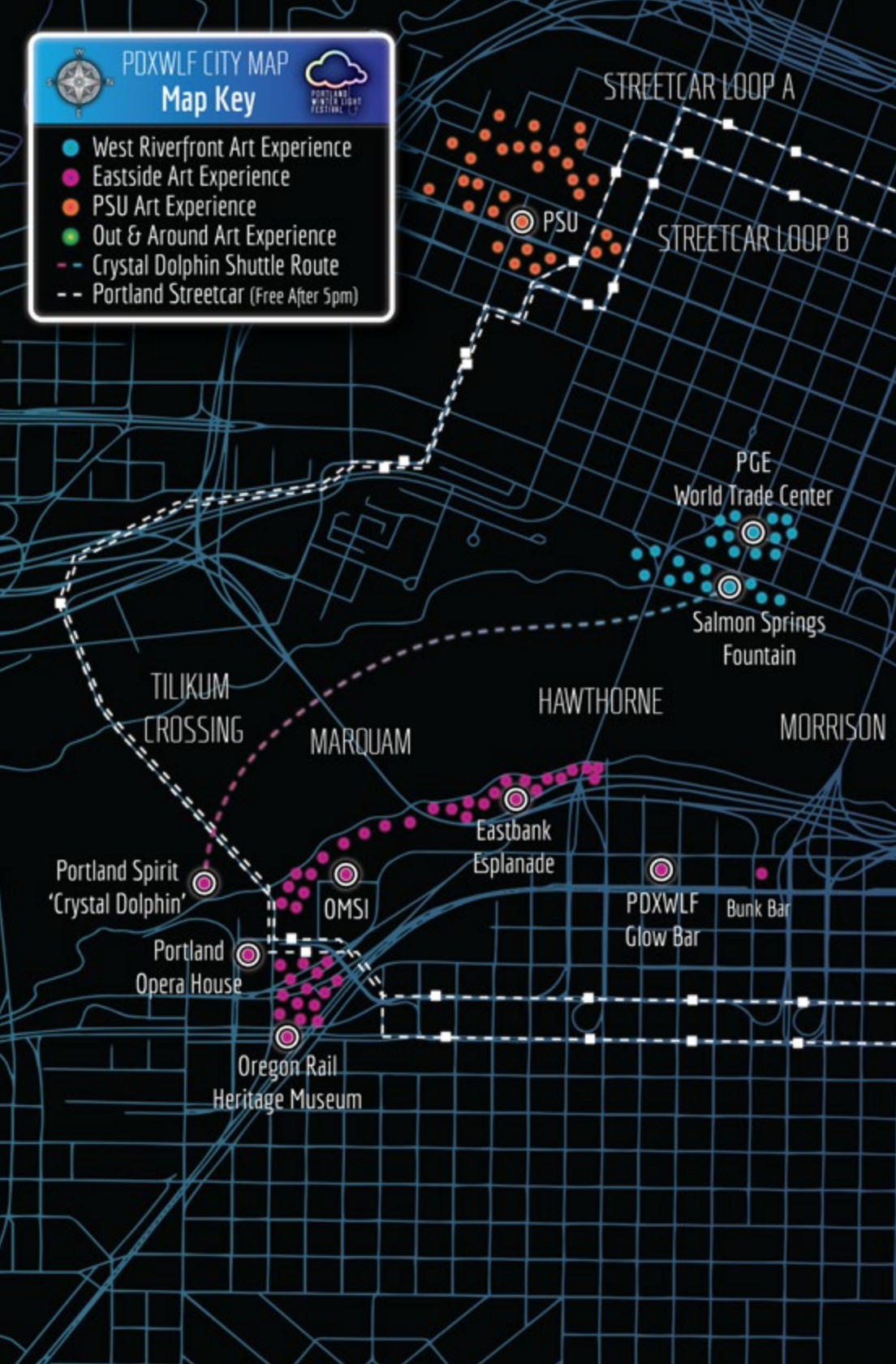


PDXWLF CITY MAP

Map Key



- West Riverfront Art Experience
- Eastside Art Experience
- PSU Art Experience
- Out & Around Art Experience
- - Crystal Dolphin Shuttle Route
- - Portland Streetcar (Free After 5pm)



STREETCAR LOOP A

STREETCAR LOOP B

PSU

PGE
World Trade Center

Salmon Springs
Fountain

TILIKUM
CROSSING

MARQUAM

HAWTHORNE

MORRISON

Portland Spirit
'Crystal Dolphin'

Eastbank
Esplanade

OMSI

Portland
Opera House

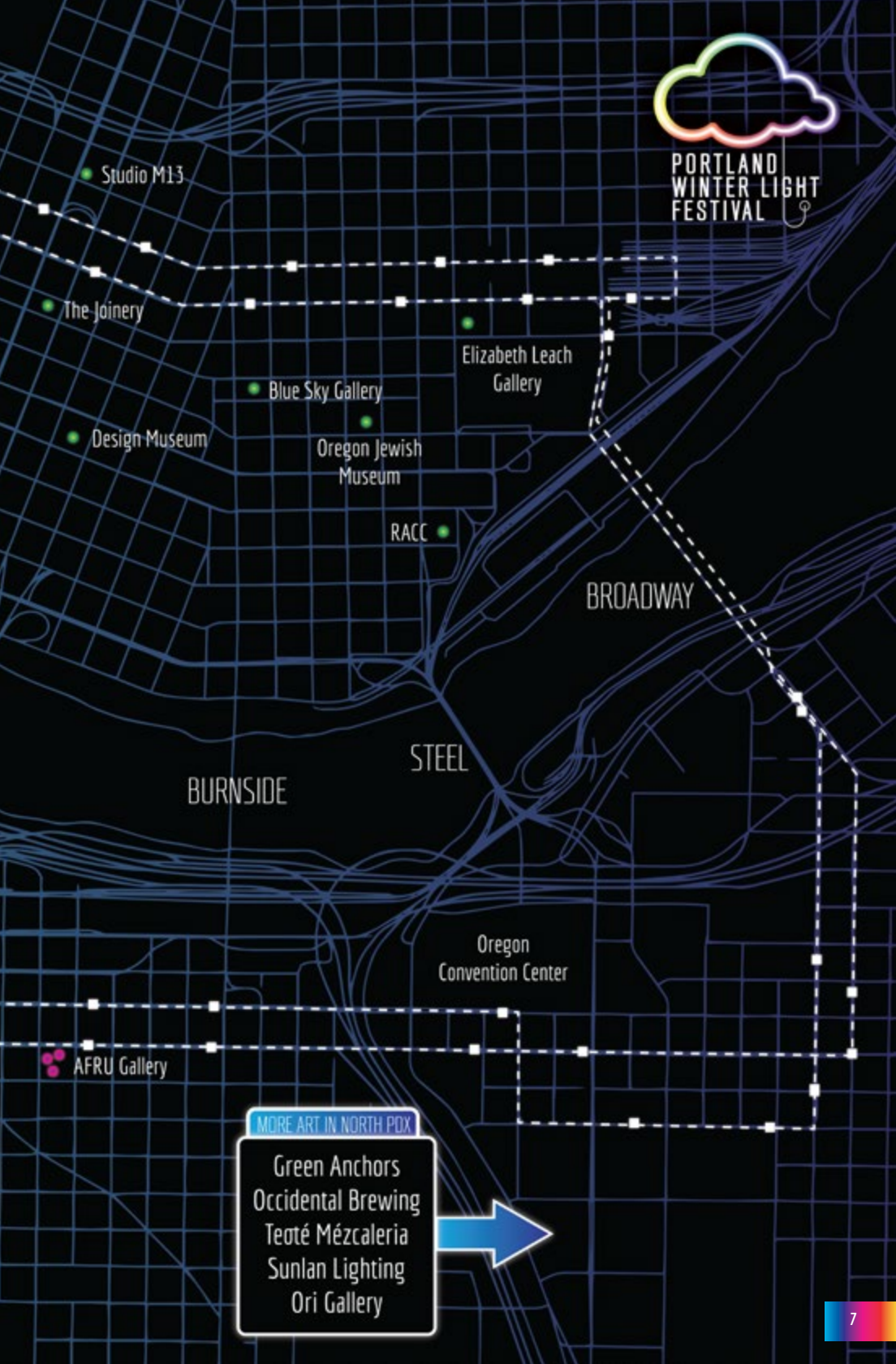
Oregon Rail
Heritage Museum

PDXWLF
Glow Bar

Bunk Bar



PORTLAND
WINTER LIGHT
FESTIVAL



Studio M13

The Joinery

Design Museum

Blue Sky Gallery

Oregon Jewish
Museum

Elizabeth Leach
Gallery

RACC

BROADWAY

BURNSIDE

STEEL

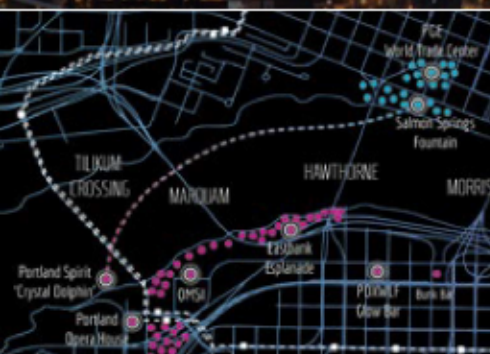
Oregon
Convention Center

AFRU Gallery

MORE ART IN NORTH POX

Green Anchors
Occidental Brewing
Teoté Mézcaleria
Sunlan Lighting
Ori Gallery





THE CRYSTAL DOLPHIN SHUTTLE PORTLAND SPIRIT CRUISES & EVENTS EVERY 30MIN

EAST SIDE DOCK: 110 SE CARUTHERS ST
WEST SIDE DOCK: 1000 SW NAITO PKWY

PORTLANDSPIRIT.COM



PORTLAND
OPERA



PORTLAND OPERA RESIDENT ARTISTS ON THE CRYSTAL DOLPHIN PORTLAND OPERA PERFORMANCE

7-9PM (4 TRIPS) THU, FRI, SAT
PORTLANDOPERA.ORG/RESIDENT-ARTISTS

LIGHT UP THE CRYSTAL DOLPHIN MORE THAN LIGHT

MORETHANLIGHT.COM

The Crystal Dolphin will be running for free throughout the festival, and shuttling festival attendees across the river every 30 minutes. Come experience Portland from the water!

Offering year-round Lunch, Brunch, Dinner, Sightseeing, Holiday, Specialty and Private Cruises. For the perfect occasion, just add water. Come experience premier dining on one of five luxurious yachts operating year-round on the Willamette River in beautiful downtown Portland as well as the Columbia River Gorge National Scenic Area in Cascade Locks. Brunch, lunch and dinner are offered on public cruises, along with sightseeing and a variety of adventure cruise options. Privately charter your next celebration aboard one of the all-inclusive vessels. Rental includes Coast Guard-approved captains, cruise manager, service staff and freshly prepared cuisine by your own personal chef in our on board galleys. A variety of capacity available up to 340 guests. Family owned for 25 years.

Climb aboard the Crystal Dolphin with the Portland Opera for a program featuring the 2019 Resident Artists! Tenor Tom Cilluffo, soprano Helen Huang, and mezzo-soprano Camille Sherman will illuminate the night with favorite arias from the world of opera as well as some beloved musical theatre selections.

Portland Opera established the Resident Artist Program in 2005, providing a bridge from the conservatory world to the professional stage for talented young singers who join the company for a rigorous residency and training program. Each resident artist appears in featured roles in main stage productions and gives an art song recital at the Portland Art Museum during the season. As a group, they perform at season and individual production previews and other community-based performances. Selected through a competitive national search process, each of Portland Opera's Resident Artists reflects a bright future for the art of opera.

As Portland-based lighting nerds, we are lucky to have an event like PDXWLF in our own backyard and are honored to be a part of it.

More Than Light is a local collective of lighting, media and audio designers and technicians committed to creating unique and beautiful experiences. Always striking a balance between form and function, we are inspired by aesthetics and driven by practicality.

Light Up the City

In an effort to create a city-wide light happening viewable from both sides of the river, the bridges, and the Crystal Dolphin Shuttle, the lights of the Morrison Bridge, The Oregon Convention Center, and OMSI and more have been synced up to create a city-wide light installation.

The lights on the Morrison Bridge are a year-round installation that reflect events and happenings throughout Portland via changing colors. For the Portland Winter Light Festival, these lights are changing color to celebrate light and community during the festival. Members of the community are invited to change the color of the lights any time of year.

The Willamette Light Brigade is the Portland Winter Light Festival's founding organization. It was started in 1986 with a mission to beautify the nightscape of Portland, and to help build civic pride through artful lighting.

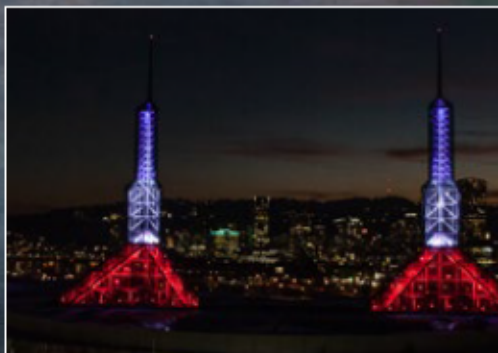


MORRISON BRIDGE LIGHTS WILLAMETTE LIGHT BRIGADE

LIGHTTHEBRIDGES.ORG



Oregon Convention Center's twin glass spires have long been a famous feature of the Portland skyline, particularly when they light up at night. The towers feature a programmable system with the ability to create custom color schemes using energy efficient LED fixtures. Oregon Convention Center is a major hub of activity in the greater Portland region. The Convention Center is LEED Platinum certified facility that hosts groups from around the world and brings millions of dollars into the Portland and Oregon economy. It is owned by Metro and managed by the Metro Exposition and Recreation Commission.



OREGON CONVENTION CENTER TOWER AND CRESCENT LIGHTS OREGON CONVENTION CENTER

OREGONCC.ORG

OREGON Oregon
Convention
Center

SW Jefferson St

SW Madison St

SW Main St

SW Naito Pkwy

HAWTHORNE BRIDGE

World Trade Center: Bridge Level



1

2

4

3



2

5

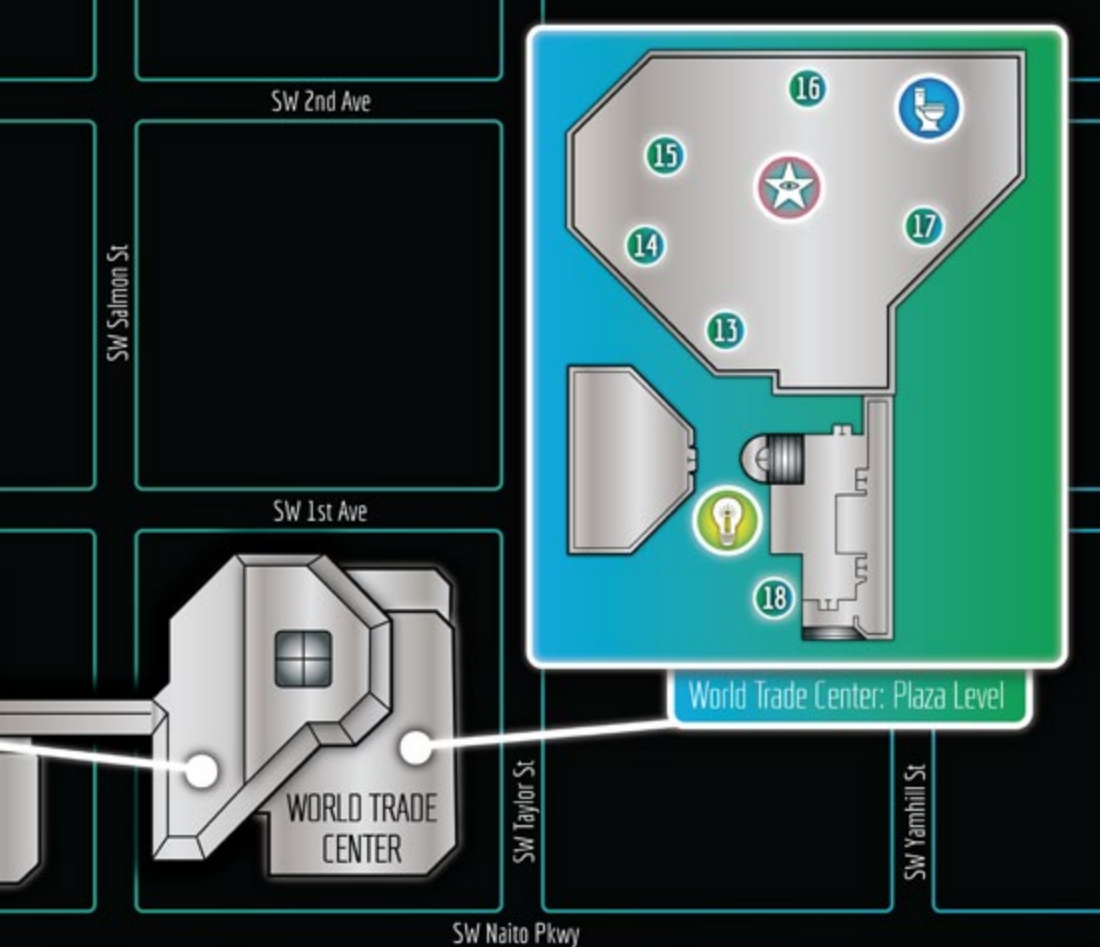


6

7



PORTLAND
WINTER LIGHT
FESTIVAL





GLOW JAM

7-10PM

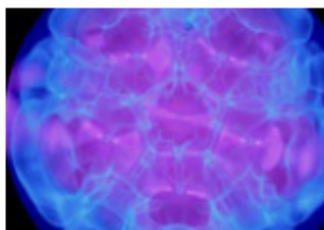
THU

26 SW SALMON ST

Celebrate opening night of the festival at the fourth annual PDXWLF Glow Jam!

Help us party in the World Trade Center Plaza by bringing your glow-in-the-dark toys, hoops, staff, poi, and LED props. DJ Manoj will provide the tunes.

This is a community event open to all ages and skill levels. Come join in the fun!



CYMATIC CHAMBERS CLASSICAL REVOLUTION PDX & CONSILIENT MULTIMEDIA

6, 8PM

THU, FRI, SAT

26 SW SALMON ST

CLASSICALREVOLUTIONPDX.ORG

INSTAGRAM: @CONSILIENTMULTIMEDIA

Visible Sound uses cymatics, the visualization of sound in a physical medium, to present classical chamber music in a way that is both visible and audible. In this particular manifestation a camera is suspended over a 3d printed dish filled with liquid. This dish is attached to a transducer so that when sound is played it creates waveforms in the liquid depending on the frequency and amplitude applied. A sound-reactive light ring attached to the end of the camera reflects light off of the medium back into the camera sensor and visualizes the waveforms. Visible Sound includes musical performances by members of Classical Revolution PDX and cymatic interpretations by Consilient Multimedia.

Classical Revolution PDX is a non-profit organization dedicated to making classical music more accessible. In addition to curated events throughout the year, they host a monthly Chamber Jam, a classical music open mic, at the Waypost on North Williams every 3rd Sunday of the month. Consilient Multimedia is available for installations, workshops, performances, and art focused on cymatics (the study of visible sound).



VAUDEVILLE VISION QUEST CIRCUS LUMINESCENCE

630, 830PM

THU, FRI, SAT

26 SW SALMON ST

CIRCUSL.COM

Circus Luminescence is an innovative troupe specializing in entertainment without boundaries. Enter a vaudeville vision quest through a high tech universe of unbounded imagination. Featuring a nouveau fusion of LED juggling, hooping, poetry, acrobatics, theatre, and magic, the psychedelic stylings of Circus Luminescence is a treat for the eyes, ears, and soul.

Circus Luminescence is a group of artists who have set out to bring light into the darkness and laughter into the air. They believe the fun they have on stage is contagious to the whole audience, and that magic is a state of mind.

**CLASSICAL
REVOLUTION PDX**



CIRCUS LUMINESCENCE



SILENT DISCO FUN LUV'N

26 SW SALMON ST

FACEBOOK.COM/FUNLUVNCREW

THURSDAY

7:00 - 11:00PM - DJ MANOJ

FRIDAY

CHANNEL 1 - HOUSE

6:30-8PM-MS. MATCH

8-9:30PM-MARK BRODY

9:30-11PM-DJ MANOJ

CHANNEL 2-BASS

8-9:30PM-DJ POM POM

9:30-11PM-RANDY SHARP

SATURDAY

CHANNEL 1-HOUSE

6:30-8PM-POLYPHONIX

8-9PM-GROSES

9-10PM-MIENNE

10-11PM-DREAM BRIGADE

CHANNEL 2-BASS

7-9PM-COBRA WOLF SHARK

9-11PM - CHAACH

Our performance is interactive in that you connect through the music through the headphones and are inspired to move and dance while you wear these LED headsets. We have DJs that perform music for you on each night of PDXWLF.

Fun Luv'n is at this moment a silent disco rental company engaged in creating interactive ways for community to gather, connect, and be playful.

Note: Headphone rental costs \$5 with valid ID.



SLEEPLESS LIKE LIGHT HEIDI DUCKLER DANCE/ NORTHWEST

7PM

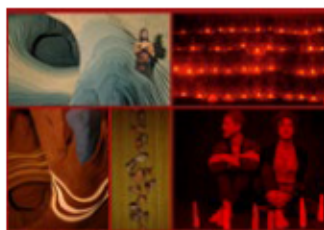
THU, FRI, SAT

1000 SW NAITO PKWY

HEIDIDUCKLERNORTHWEST.ORG

Sleepless Like Light is created for the festival by choreographer Heidi Duckler and fabric artist Mimi Haddon. Inspired by "The Chandelier" a novel written by Clarice Lispector, this duet is performed by two dancers who move like shadows within illuminated cages beneath a disco ball of refracted light. The levels of light and shadow are transcendent representations of our external and internal worlds living in the universe.

Heidi Duckler Dance creates place-based performances that transform non-traditional spaces, providing learning opportunities and engaging diverse communities, in the belief that the arts can change our vision of the world and of ourselves.



DIOSCURI - SOPHIA- THE GOLDEN AGE ROWAN FRANCIS & THE BILLYGOAT

7, 9PM

THU, FRI, SAT

26 SW SALMON ST

FACEBOOK.COM/THEBROTHERSBILLYGOAT

Spanning over a decade now, Rowan Francis & The Billygoat was originally conceived when I hit a very low point in my life. Instead of relying on others to provide substance, I decided it was time to turn inward and find it within myself. The stop-motion films, projected during performances, have always served as templates to organize my scattered thoughts on sexuality, gender, mythology, fantasy, and to help me arrive at my final destination: a protective matriarchal cosmos. They travel through dreamscapes and memories intending to mend the raging heart and leave one feeling contemplative yet elated. I teamed up with my partner Nick Woolley to complete these musical scores, back in 2007, and we've been performing and creating ever since.



THURSDAY, FEB 7

FRIDAY, FEB 8

SATURDAY, FEB 9



STORIES AROUND THE FIRE

630, 730, 830PM

THU, FRI, SAT

SALMON SPRINGS

STORYTELLERS PAVILION

WESTSIDE

Stories Around the Fire evokes the human tradition of gathering around fire to share warmth and wisdom through story. In these times, we recognize the importance of hearing unique stories from varied voices. We invite individual communities of Cascadia to program an evening of storytelling during the event. We provide a space and production support to storytellers during PDXWLF, with promotion of participants and content. With the elements of light and community — cornerstones of the Portland Winter Light Festival — the series offers a shared experience, exploring how we can connect as strangers when we gather. Set aside from the hubbub, this intimate setting, with fire art adjacent to benches and covering, presents a comfortable space for engagement. Visitors are able to find respite and reflection from the storytelling experience.

FIRE PERFORMANCE FLAMEBUOYANT PRODUCTIONS

6, 8PM

FRI, SAT

1000 SW NAITO PKWY

FLAMEBUOYANT.COM

FACEBOOK.COM/FLAMEBUOYANT

[INSTAGRAM: @SHIREENFLAME](https://INSTAGRAM.COM/SHIREENFLAME)

The Flamebuoyant Productions team absolutely loves the Portland Winter Light Festival! It is a true joy to be able to share the love of what we do with the community. Back for a fourth year, Flamebuoyant Productions presents innovative, exciting fire performances that thrill and engage audiences of all ages.

Shireen is an object manipulator extraordinaire! She has been vital to the development of Portland's fire performance and circus community: she has been dancing with fire since 1999, founded and led the Oregon's first conclave to Burning Man in 2002, produced two instructional DVDs on poi spinning, was a co-producer of Circus Artemis, an all-woman circus project, helped found and now runs Pacific Fire Gathering as the General Manager, and has participated in multiple incarnations of performance and instructional groups, including Flamebuoyant Productions, founded in 2005. An accomplished teacher as well as performer, she has taught circus skills, object manipulation, and aerial arts to students of all ages from the Portland Saturday Market to the beaches of India to the National Circus School in Cambodia. Shireen currently teaches weekly poi classes and private circus lessons in NE Portland.



FRIDAY, FEB 8

SATURDAY, FEB 9



DESIGN MUSEUM MORNINGS: ILLUMINATING A CULTURAL ICON DESIGN MUSEUM PORTLAND

830-10AM
FRI

522 SW 5TH AVE #1500

DESIGNMUSEUMPORTLAND.ORG

Light has the ability to transform spaces, tell stories, and cultivate communities. Crafting a story with light requires an architectural comprehension of space, and an ability to construct a narrative through a non-traditional medium. Through manipulation of space, light, and time, we can create beacons that welcome, inform, and impart a tangible cultural experience from an ephemeral source. Join Zachary Suchara, Principal at Luma Lighting Design, for a conversation on the newly-renovated Japanese Garden Cultural Village. Explore how light was used to transform this new iconic landmark within the garden, and how these effects radically shape the viewer's experience.

Design Museum Portland is redefining what it means to be a museum in the 21st century — we're online, nomadic, and accessible to all through a network of exhibitions, events, and content. Our mission: Bring the transformative power of design everywhere, to inspire a world full of creative problem solvers. Design is everywhere. So are we. This is a ticketed event. PDXWLF attendees receive a 10% discount, using code PDXWLF19.



ON THE GRID MAD SCIENCE OF PORTLAND AND VANCOUVER

6-630, 730-8
FRI, SAT

2 WORLD TRADE CENTER
FLAGS CONFERENCE ROOM,
PLAZA LEVEL FACING THE RIVER

PORTLAND.MADSCIENCE.ORG
FACEBOOK.COM/MADSCIENCEPORTLAND

PGE and Mad Science present **On the Grid**, a fun, interactive presentation about energy supply and STEM (science, technology, engineering, and math) careers associated with future energy needs. This high-energy show will spark the imagination and curiosity of audience participants as they learn about science and innovation, and how it affects their world. "On the Grid" is a 30-minute presentation designed to inspire students and citizens to take charge of the future! After a glimpse at the evolution of the electrical infrastructure known as "the Grid," we show them how science is already integrating new technologies to create a "Smart Grid!" This solid foundation of facts mixed with fun will let their imaginations take the ideas of today to build the reality of the future.

Mad Science is on a mission to spark the imagination and curiosity of children by providing them with fun, interactive, and educational programs that instill a clear understanding of what science is, and how it affects their world. We do this through after school programs, on-site field trips, educational assemblies, summer camps, and birthday parties.





1

FIRE BALLS IVAN MCLEAN, MOONSHINE EVENTS, WHAT THE FESTIVAL

IVANMCLEAN.COM

INSTAGRAM: @IVANMCLEANART



2

ENLIGHTEN FRESH SQUEEZED!

LEMONADEART.COM

EnlighTEN is a project based upon reaction. The main objective of the lit poles that comprise the installation is to activate space and to generate interest. Colors from the LEDs ebb and flow, mixing the energy of the area. Originally conceived during the summer of 2018 to bring light to Black Rock City, the installation looks to engage passersby by energizing the surrounding space. Participants are drawn to the interplay of light dancing between each pole as they make way on their journey. The light poles invite participants to meander, chill, relax, or feel empowered by the rhythmic LED programming.

Fresh Squeezed! is an art collective based in an industrial workshop located in NW Portland. The main focus of the collective is to activate interesting projects for Black Rock City and how those experiences can be exported to live on in the outside world for the other 51 weeks of the year.



Created for the inaugural year of PDXWLF 2016, Jen Fuller's glass paper planes make a return flight to the Hawthorne Bridge. Reclaimed storm windows donated from Portlanders are hand crafted into 150 flying glass paper planes and projected with video of the sky. The act of allowing each plane to fly independently is an essential part of this project's evolution from reclaimed pieces of Portland—to unified large-scale installation—to deconstruction, so each plane is available for purchase. For more info see artist website.

Portland artist Jen Fuller blends the contrasting aesthetics of glass and steel to create sculpture she refers to as "totems for the soul." Motivated by the technical challenges inherent in transforming materials with history into time-based experiences, her work reflects the transparency and vulnerability found in humanity and nature.



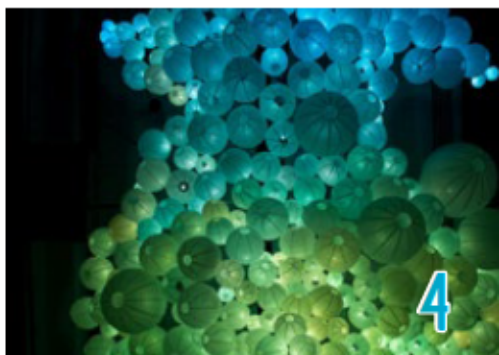
F(LIGHT)
JEN FULLER STUDIOS
JENFULLERSTUDIOS.COM



BULLSEYE
GLASS CO.

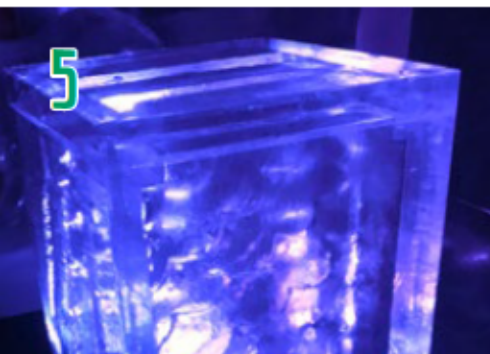
La Touffé is an exploration of space and form, an experiment taking an irregular mass and finding consistency within it. An amorphous, unpredictable mass of paper lanterns comes alive as consistent patterns of light move through it. La Touffé was born from an idea that an art project can be repetitive yet never have the same shape twice, therefore remaining unique while still maintaining its integrity and consistency. La Touffé is engaging and curious — it begs the viewer to find form in an otherwise irregular mass.

Jason Predock, principal designer and owner of TNGSTN_liteworks is a SF Bay Area-based lighting designer and artist designing works locally and country-wide since 2012. His installations have spanned locales from Burning Man under the harshest conditions to large scale corporate commissions for companies such as Facebook and YouTube.



LA TOUFFÉ
TNGSTN_LITEWORKS
JASONPREDOCK.COM
INSTAGRAM: @TNGSTN_LITEWORKS





QUADRANTS OF IDENTITY

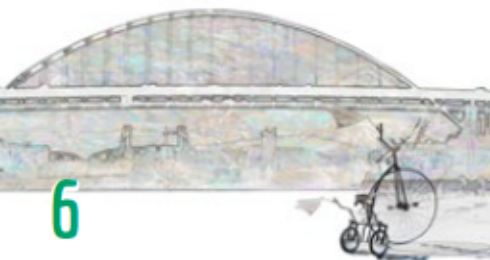
JAMES STUGART AND ERIK WALTINSEN

ICEOVATION.COM

ICEovation
Serving you with ice creations

Exploration of the self is the most personal journey we can take. Our path continually unfolds from our actions. Which intrinsic path are you traveling? Ascending into the non-physical realities or descending into the physical grounding or are you hovering in the middle? Stop and reflect: into what realm are you currently diving, from where did you just travel, and to where do you see yourself heading?

James Stugart found his passion working with ice while growing up in Alaska. He generates inspiration from the intuitive world and, like ice, the fluid nature of ice and intuition match perfectly for ephemeral experiences.



STORIES UNDER THE BRIDGES

CHERYL LEONTINA

LINKEDIN.COM/IN/CHERYL-LEONTINA-24B6A151/

FIRE PIT

ANDY LACY

FORGEWERKS.COM

Stories Under the Bridges is a short film documentary that combines the stories collected from Portland's homeless residents who are sleeping rough, staying in warming shelters, or living in transitional tiny house villages. The goal of this project is to provide a nonthreatening venue for sharing stories. What is the strength helping them survive? What are their hopes for their future?

Viewing the film provides an opportunity to see beyond the surface and to gain a greater understanding and sensitivity to the individuals most affected by our housing crisis. It's from this place of greater understanding that we will bridge the divide and begin working together to solve this complex issue.

Cheryl Leontina is a Master of Architecture candidate at Portland State University who is completing her certification with PSU's Center for Public Interest Design. She is also a volunteer with Portland's Village Coalition: a group comprised of houseless or previously houseless individuals. Leontina partnered with Nili Yosha of "Outside the Frame" and crew to collect stories and create a short documentary. This project is also supported by a Village Coalition grant "Voices from the Villages" that was awarded from Portland's Regional Arts & Community Council, see PDXWLF website listing for more information. see PDXWLF website listing for more information.

Fire Pit by Andy Lacy, ForgeWerks.com



The gleaming spires of the Moltensteelman Wishing Portal bring forward a colorful flaming fantasy world that is operated by magic lamp and fueled by the hopes and dreams of a thousand souls. Flame bursts are created by audience participation and colorful translucent LED panels create endless variation in this visceral and compelling large scale flame art installation.

Moltensteelman Studio is a collaborative venture of Oregon artists Martin Montesano and Anne Peterson. Martin is a gifted and exacting metal artist and fabricator with a background in mechanics and an endless imagination. Anne is a talented artist with an eye for the absurd and a knack for making original projects that are often whimsical and always innovative.



MOLTENSTEELMAN WISHING PORTAL MOLTENSTEELMAN STUDIO

MOLTENSTEELMAN.COM



travel
PORTLAND

Fungully is a magical interactive space of five glowing, singing mushrooms. Each mushroom cap has its own unique glow and responds to your touch with a unique harmonic sound. By touching all 5 mushrooms, an individual or group can create their own soundscapes and light show. This fairy ring of light is a serene place to escape from all the stimulation and loud music of a festival, and connect with nature and others.

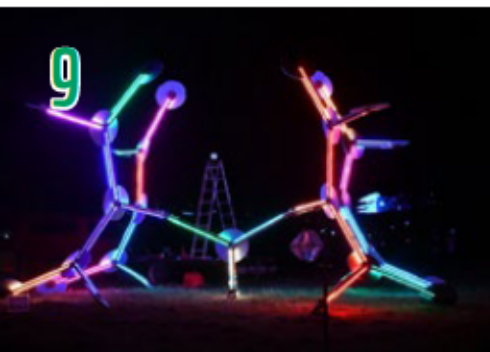
After Dark Arts is a collective of artists working out of Portland Oregon. We create one-of-a-kind interactive art installations with a focus on play and whimsy. We leverage a variety of mediums to create satisfying experiences that inspire wonder. We turn fantasy into reality with panache and a splash of magic.



FUNGULLY NICKIE B. & RYAN RAMAGE OF AFTER DARK ARTS

INSTAGRAM: @AFTERDARKARTS





ALTERNITY

ROY "THE WIZ" TRAMMELL

FACEBOOK.COM/PROFILE.PHP?ID=100014777382356

Reality is not a straight line. It is a branching tree of alternatives where everything that can happen, does. At each point of uncertainty, two parallel universes diverge. Each consciousness traverses a unique path through this ... Alternity. Patterns and colors flow through the branches. Colored sprites perform intricate dances. Shapes and waves pass through the structure as three dimensional forms. At times, these compositions move to imaginary music. At other times they respond to gestures at a touch screen kiosk.

Alternity is all about the future and how our everyday decisions determine our path through its infinite possibilities. Starting from the single moment of Now, we have the power to make choices that bring us to any of these possible future worlds. Alternity's interactive element emphasizes our ability to shape these worlds.

Roy is a visual artist working at the intersection of technology and art. Known to his friends as "The Wiz", he lives and works around Portland, Oregon.



FORWARD FUNNEL

INSTAGRAM: @MRRFSKRRRT
INSTAGRAM: @SKETCHY_NICKY

We are awash in sensory experience, the materials we use to make up our realities can be dismissed as banal or cherished as revelatory. Our goal is to use an alchemy of light, form, and material to provide an experience that allows the viewer to revel in their experience.

We are interested in the idea of the object as an agent of change. Central to this idea is the fact that change doesn't happen without active participation. We're excited to see how we transform during the process of bringing this idea to life and, in turn, handing it to you for your own experience.



Created by Ivan McLean and Glen Boyd for What the Festival, "Mirror, Mirror on the Ball" became a memorable part of the experience in the wilds of Dufur, just as it will along the river in Portland. 25' tall with a 10' diameter ball covered in 1,600 mirrors. Be prepared to bring your 70's style!

Ivan has been creating furniture and sculpture since the age of the dinosaurs with all kinds of materials and intentions for public and private spaces around the country. The Big Ball o' Bling, as it's never been called, came from a collaboration between Ivan and Glen Boyd, the founder of What the Festival, a gathering of friends, music and art in the wilds of Dufur where it spun for 5 years as the centerpiece. Bring your dancing shoes and hottest moves to dance the night away!

Photo by Daniel Zetterstrom @daniel_zetterstrom



MIRROR, MIRROR ON THE BALL
IVAN MCLEAN, MOONSHINE EVENTS,
WHAT THE FESTIVAL
LIGHTING BY SHOWCALL EVENT SERVICES

IVANMCLEAN.COM
INSTAGRAM: @IVANMCLEANART
SHOWCALLSERVICES.COM



In the eddy of discontent, our mind attempts to escape the world. Focus on the breath can tether us to the present moment. When sparked to take flight, remember that right now you are still here.

Jed Bursiek is an animator, designer, illustrator, musician and director of Angry Buddha Studios. He loves to encourage people to think deeply — about anything, really — but sometimes about nothing as well.



LIGHTNESS
ANGRY BUDDHA STUDIOS

ANGRYBUDDHA.COM



LITE BRITE REMASTERED ACME

ACMEScenic.com

Instagram: @ACMEPDX

ACME

ACME's installation adds a fresh taste of technology to a game that has transcended generations and innovated thousands of imaginations. The remastered, life-size 'Lite Brite' offers a nostalgic moment for most. Standing at 6 feet tall and 8 feet wide, this interactive piece allows participants creative power and functions through tactile interaction.

Founded 26 years ago, ACME is a custom fabrication and event production studio located in Northeast Portland. We allow our clients to DREAM bigger by interjecting a higher level of ingenuity into every space and experience we CRAFT. Our dedication to artisan-grade quality leads to truly original environments that CAPTIVATE and inspire your audience.



STREET SEATS: URBAN BENCHES FOR VIBRANT CITIES DESIGN MUSEUM PORTLAND

ALL HOURS

121 SW SALMON

DESIGNMUSEUMPORTLAND.ORG

Street Seats is an international design challenge which culminates in an outdoor design exhibition and walking tour around the World Trade Center Portland plaza in downtown Portland, Oregon. Entrants designed sustainable outdoor sidewalk furniture with a focus on reuse, using environmentally-friendly materials and innovative construction methods.

Street Seats provides an opportunity to improve the visibility and livability of an urban area while being socially and environmentally conscious. Individuals and groups from around the world designed an iconic bench, or 'street seat,' for the World Trade Center Portland plaza.

At Design Museum Portland we believe design can change the world. Done well, it can elevate our quality of life, make businesses more competitive, and protect our environment. Design Museum Portland is redefining what it means to be a museum in the 21st century — we're online, nomadic, and accessible to all through a network of exhibitions, events, and content. Our mission: Bring the transformative power of design everywhere, to inspire a world full of creative problem solvers. Design is everywhere. So are we.

Have you ever wanted to be the size of a bug and walk among some giant flowers? Well now you can! Psychedahlia Garden is comprised of a metal hexagon-shaped fence with six giant flowers at each corner that stand almost 12' tall. Made of shiny, textured fabric and colorful faux fur, these Jurassic-sized flowers have a vibration-activated spinning light in their center that cascades beams of colorful light all over the surrounding area. They shut off after a short time and await someone to come by and gently tap the bright green leaves or stem to start the visual display of illumination.

Tyler FuQua Creations is made up of a handful of skilled creative and talented people from the Portland, Oregon area. Tyler, having gotten started by making giant puppets with what was lying around his house, has set his focus on building bigger and better things with his team with each new idea.



PSYCHEDAHLIA GARDEN
TYLER FUQUA CREATIONS

TYLERFUQUACREATIONS.COM



Electric Boogaloo is a built interpretation of geological formations. The Crystal Caves of Mexico, the Giant's Causeway in Ireland, and the hoodoos of Bryce Canyon show us a future of design that is inspired by the natural world. The installation is a structure of layered, multi-colored acrylic sheets, colorful lenses creating an experience that rebuilds itself as the user moves through the space. Electric Boogaloo is a representation of the future of ideas. In the same way single colors combine to create new ones, ideas and personal experiences, shaped by our diverse geographies, cultures and opinions, must combine to move us into the future.

Holst Architecture is a women-owned design studio that prioritizes the human experience of space in our design solutions. We strive to ensure that a holistic concept guides every project from design through construction. Our skilled designers in the Central Eastside Industrial District have been creating innovative places tailored to each client's needs, while expressing the highest environmental, social, and aesthetic ideals, since 1992.



ELECTRIC BOOGALOO
HOLST ARCHITECTURE

HOLSTARC.COM

H O L S T



17

INU-UZNUM HOOPERFLY

HOOPERFLY.COM

INSTAGRAM: @HOOPERFLY



Inu-Uzum is an exploration in human perception and machine vision, immersing participants into a volumetric synthesis space. Sights and sounds for your personal discovery and exploration.

HooperFly is focused on creating dynamic, uplifting, technology-infused, art.



18

CONTINUUM VICTORIA WELLS AND JOSEPH WELLS

INSTAGRAM: @VICTORY.AHH

INSTAGRAM: @TRASH_PANDA_



Continuum examines the movement of objects through time. As the festival evolves through the weekend, Continuum holds on to each experience — its creation, definition, dissipation. It stands as a representation of the past, the present, and the potential future.

How will our future be defined by our past and our present?

Victoria Wells is a new media artist and researcher based out of Portland, Oregon. Her work explores human behavior and interaction, with a special focus on the intersection of art and science. Victoria uses installation design and new media to give audiences the opportunity to fully immerse themselves in each experience. Joseph Wells is an interdisciplinary artist specializing in technology and design. His body of work strives to bring to life objects and experiences that have only been imagined. When he isn't conjuring wild dreams, Joseph works at DotDotDash, a tech/media agency, and plays in local bands.

Satis&Fy will make your wildest dreams come true! If you can envision it they can build it. The team at Satis&Fy work hard everyday to transform spaces into masterpieces. The PDXWLF has inspired them to repurpose and recycle the tools and materials they use everyday in new ways to bring color and motion to Portland's WTC. On the skybridge they installed pixel-mapped LEDs to breathe some life into the walkway. Along the upper-walkway they used repurposed LED ticker signs to create infinity boxes of light that tell unfolding stories of light from the land of the diodes. Added is a stage light rig to rock out with the shadows and shapes of the building's design.

It always takes a team, but leading this installation is Satis&Fy Technical Producer Jonathan Wright. He has been lighting his way through Portland since the late 90's from underground warehouse parties to gala events at the Oregon Convention Center and everywhere in between. Chances are if you have been to any events in Portland in the past 20 years he was very likely behind the scenes of some of them in one form or another.



19

UPPER BALCONY OF WTC SATIS&FY + JONATHAN WRIGHT

SATIS-FY-USA.COM

satis&fy
the true colours of events

A illuminated pong table with side panels. Banked shots off the walls make for a fast paced game that never ceases to bring laughter to the table.

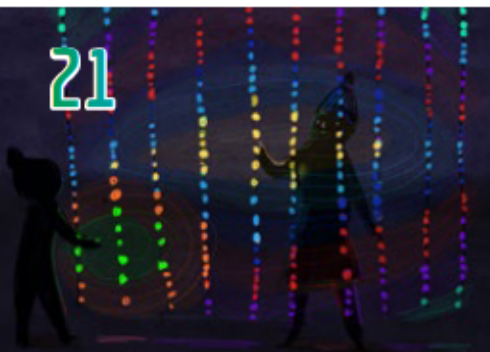
JT Thompson is a member of The Foundry 2.0, a local collective of artists, makers, and musicians. It is an incubator for creativity in the inner Eastside.



TRON PONG JT THOMPSON

FACEBOOK.COM/FOUNDRY-20-141460552567510





STRANDS FROM THE HEAVENS
RAINING PHOTONS

Strands from the Heavens is an interactive installation composed of long strings of LED lights. When touched, the light spreads, giving a sense of rippling water or shooting stars. The viewer is encouraged to play with, touch, and walk between the strands.

Raining Photons is focused on making the PNW brighter. Using lights and sensors they create environments that promote a sense of playfulness.



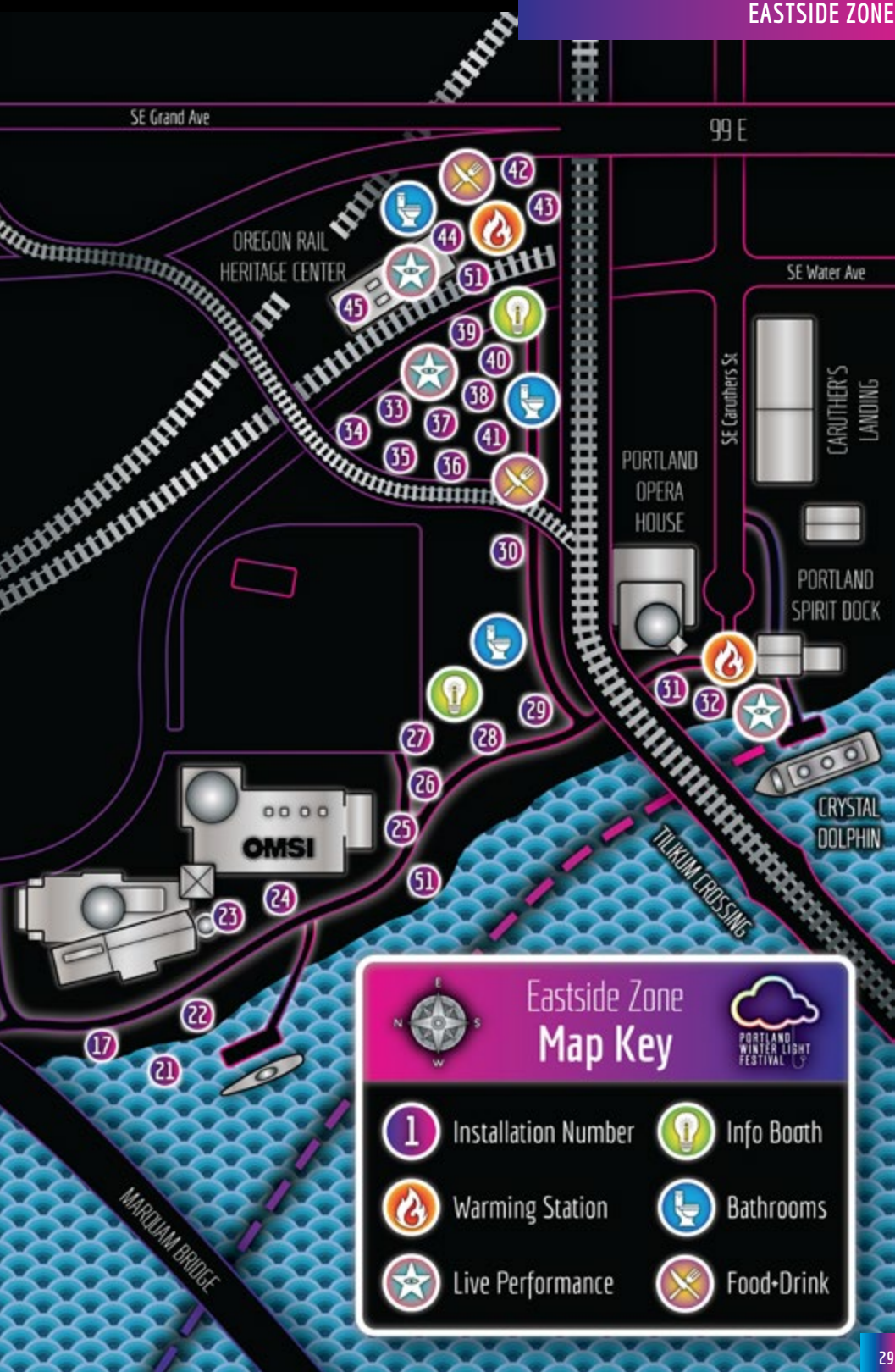


Inner South East



Eastbank Esplanade







LIGHT SCIENCE TALKS

THURSDAY, FEB 7



LIGHT AS A BIOLOGICAL FORCE OLYSSA STARRY

6PM
THU

PDX.EDU/HONORS/OLYSSA-STARRY

The captivating influence of light clearly extends beyond its effects on the human species. This talk will briefly explore some of the different ways that light is important to plants, animals, and even microbes! You may have heard about how baby turtles follow the moonlight to make their way out to sea, but did you know that exposure to a certain wavelength of light can completely stop the seeds of certain plant species from germinating or sprouting? Finally, a few best practices for lighting spaces without disturbing species will be provided.

Olyssa Starry is an urban ecologist and an assistant professor in the University Honors College at Portland State University.



CHROMATA: WHEN ALGORITHMS MEET ART BRYAN RESSLER

730PM
THU

Chromata: When Algorithms Meet Art is a talk by artist Bryan Ressler about his piece Chromata. The piece is "generative," meaning it can create its own ever-changing animations by itself, algorithmically, and can incorporate interactive input from viewers. Come learn how this cross-disciplinary work was created and the future of generative electronic art.

Bryan Ressler is a Seattle-area visual artist and musician. His works cross the boundaries between technology and traditional art and sculpture.



PROGRAMMABLE LIGHTING: THE TRANSFORMATION OF SCULPTURE AND ARCHITECTURE EICHINGER SCULPTURE STUDIO AND KOBLE CREATIVE

9PM
THU

Programmable Lighting: The Transformation of Sculpture and Architecture

Sculptor Martin Eichinger and Architect Terry Amundson examine contemporary applications of programmable lighting in the realms of art and architecture today. By discussing two of their recent collaborations, "Light Blades", an exterior lighting application for the Geode on SE Division Street, and "Crystallis", their project for the Portland Winter Light Festival, they will address working with light as a medium, its challenges, and its transformational effects in sculpture and the built environment.

Crystallis was created for the Portland Winter Light Festival by Eichinger Sculpture Studio and Koble Creative to engage viewers and spotlight the creative power of collaboration.

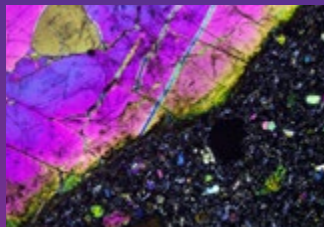


OREGON RAIL HERITAGE CENTER 2250 SE WATER AVE

THE LIGHT SCIENCE TALKS ARE SUPPORTED BY PRO SOUND & LIGHTING

EASTSIDE ZONE

FRIDAY, FEB 8



THE HIDDEN CRYSTAL STRUCTURE OF ROCKS REVEALED BY LIGHT TAMI CLARK

6PM
FRI

INSTAGRAM: @MINERALVISIONS

Of course, our understanding of deep space, deep time and life as we know it... is all owed to the microscope and use of light... but just how does this all work?! In this talk we dip into the basics of how and why geologists use light to understand the crystal structure of rocks, the tools they use to do so, and just how studying rocks has lead us to discover earth, the solar system, and the universe! Beautiful images of minerals beneath the microscope will accompany us on our journey.

Tami is a generalist! Her background in science ranges from studying streams in heavily logged areas to counting salmon in the streams of the Willamette Valley. For the last four years, she has been working as a geologic technician at a small lab in Vancouver, Washington, making geology slides. After work, she spends her free time coming up with ideas for her art project platform MINERAL VISIONS. Her goal in mind is to inspire others to allow their creative ideas to crystallize, and to engage with science in new creative ways.



THE SOFTWARE BEHIND ART: AN IMMAGINATIVE EXPLORATION! LILLI SZAFRANSKI

730PM
FRI

We often don't think about all the ways software can be used to create art, yet there are examples almost everywhere you look. From graphic design to interactive art installations to artificial intelligence, the overlap and the potential is huge! Drawing inspiration from real world creations, Lilli Szafranski will walk you through several examples that illustrate the myriad ways that art and engineering can come together to create beautiful things.

Lilli Szafranski is a software engineer and an artist. She currently works as a Senior Software Engineer (and advocate for education) at Khan Academy. Creating things from a very young age, she has experience across several artistic disciplines. Her art has previously been shown at the Oregon Museum of Science and Industry, Burning Man, the Electric Daisy Carnival in Las Vegas, Nevada, the Portland Winter Lights Festival, Oregon Country Fair, and many other venues and events around Oregon and California. Lilli Szafranski's goal is to inspire more women to pursue careers in STEM. She wants to break down the negative stereotypes that software engineers are anti-social, nerdy men, and show people that technology can be extremely exciting and fun and a wonderful outlet for creativity.

ICE AND LIGHTS JAMES STUGART & ERIK WALTHINSEN

9PM
FRI

Ice has an extremely low melting point, while lights give off heat. So how do we light up ice sculptures without melting it? How do lights reflect on such a transparent material? How does ice sculptures look in natural light compared to light bulbs? Spending over 15 years shaping ice, I have learned a great deal about how light is an important element not only for displaying, but carving. I look forward to sharing this information with you and answering any question you have about lights in ice carving.

James Stugart found his passion working with ice while growing up in Alaska. He generates inspiration from the intuitive world and like ice, the fluid nature of ice and intuition match perfectly for ephemeral experiences.



LIGHT SCIENCE TALKS

SATURDAY, FEB 9



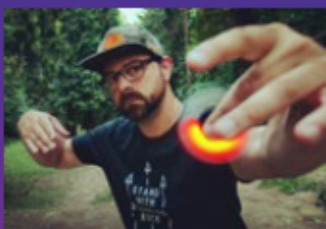
AURORA BOREALIS IMAGERY FROM ALASKA "AURORA" DORA REDMAN & TOM BENNETT

6PM
SAT

AURORADORA.COM

Experiencing the aurora can be life changing! The grand scale of an Aurora Borealis display is a wonderful part of the northern night sky. The interaction of the sun's solar wind (protons and electrons) with the earth's magnetic field and atmosphere create a colorful and dynamic display.

Tom is a former aurora researcher and Dora is an active aurora photographer based in Talkeetna, Alaska.



MULTIMEDIA ART AND INSTALLATION TECHNIQUES JESSE ZEPEDA

730PM
SAT

Z-VIZ.COM
INSTAGRAM: @BASSMANG5

Join Jesse Zepeda for an in-depth look into the world of new media and installation art. This lecture will feature works of multidisciplinary teams building multi-sensory works of art. Such works are being produced around the world and range from cutting-edge stage design to architecture and environmental design. Come experience these breathtaking installations and realize the artistry that has inspired and driven festivals like PDXWLF to exist.

Jesse Zepeda is a multidisciplinary producer from Portland, Oregon. His productions have ranged from video-mapped performances with the Eugene Ballet to TV shows for MTV and designing Portland's premiere nightlife destination, No Vacancy Lounge.



HEARING HAL THROUGH THE LOOKING GLASS RICH BURTON OF HOOPERFLY

9PM
SAT

Human light sensors (a.k.a. eyeballs) allow us to experience our environment in ways that we sometimes take for granted. It's only when we are deprived of these light portals or we attempt to mimic their qualities that we can begin to understand how we are connected to light. In this talk, we will explore some of the characteristics of the vision as it relates to computer vision and making eyeballs for machines. Live and interactive demonstrations will be available for attendees.

HooperFly is focused on creating dynamic and uplifting, technology infused, art.



THURSDAY, FEB 7

FRIDAY, FEB 8

SATURDAY, FEB 9

EASTSIDE ZONE

FRIDAY, FEB 8

SATURDAY, FEB 9



STORIES AROUND THE FIRE

6, 7, 8, 9PM
THU, FR, SAT
CARUTHERS PLAZA

Stories Around the Fire evokes the human tradition of gathering around fire to share warmth and wisdom through story. In these times, we recognize the importance of hearing unique stories from varied voices. We invite individual communities of Cascadia to program an evening of storytelling during the event. We provide a space and production support to storytellers during PDXWLF, with promotion of participants and content. With the elements of light and community — cornerstones of the Portland Winter Light Festival — the series offers a shared experience, exploring how we can connect as strangers when we gather. Set aside from the hubbub, this intimate setting with fire art adjacent to benches and covering, presents a comfortable space for engagement. Visitors are able to find respite and reflection from the storytelling experience.



ILLUMINATED BIKE PARADE

ARRIVE AT 7PM
RIDE AT 730PM
FRI

PDXWLF.COM

Join us for the 4th annual Illuminated Bike Ride! The ride is free, open to everyone, and happens rain or shine! The Illuminated Bike Ride is co-hosted by TomCat Bikes, Shift2Bikes, and the Thursday Night Ride.

Bring your bicycle, head lights, tail lights, and your illuminated imagination. Deck your bike out in lights during the dark throes of winter, and dress appropriately for the weather. See pdxwlf.com for start location; we ride at 7:30pm.

Need to deck out your bike? TomCat Bikes is featuring Brightz LED bike light systems and other re-chargable lighting. tomcatbikes.com



LANTERN PARADE

ARRIVE AT 6PM
PARADE AT 630PM
SAT

[TILLIKUM CROSSING](http://TILLIKUMCROSSING)

Join performers and festival-goers as we dance, sing, and laugh together on this 1 mile parade across the Hawthorne Bridge. Bring your weatherproof lanterns, illuminated umbrellas, glow puppets, and lit up costumes. The parade starts in Tillikum Crossing Lot—located on Water Ave. directly north of the OMSI/SE Water Max Station—will travel west to the Eastbank Esplanade, where we then head north and cross the Hawthorne Bridge, to conclude at the Salmon Springs Fountain. This event will happen rain, sleet, or shine. Please dress for the weather and bring the whole family!





1

TIP OF THE ICEBERG RICHARD CAWLEY AND PORTAL ARTS COLLECTIVE

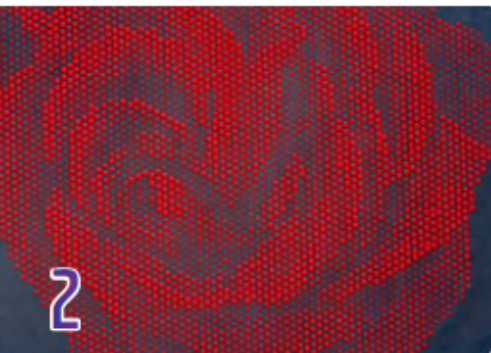
PORTALARTSCOLLECTIVE.ORG

INSTAGRAM: @PORTALARTSCOLLECTIVE



This polar bear, precariously balanced upon a teetering iceberg made of plastic water bottles, was created with our community's recycled plastic containers and their creative genius at our art workshops.

Portal Arts Collective transforms trash into art in order to educate communities about the process of creative material reuse and our environmental impact, advancing a regenerative future that is focused on personal accountability and collective action.



2

PORTLAND IN SCREWS SAM KLEIN

INSTAGRAM: @DOCTORSAMKLEIN

FACEBOOK.COM/SAM.KLEIN.77

It's the Portland skyline. In screws!

Sam Klein uses art as a lens to make sense of the world. He utilizes non-traditional materials to express the organic patterns of nature via spirals, circles, and metal screws.

Fire Spheres are unique hand-cut works of art by artist Leon Potterton. No two are exactly alike as each creation is hand drawn. Fire Spheres are recycled steel sculptures enjoyable to view by day and especially enjoyable at night under the stars with friends and family. The constant movement and change of fire is both soothing and exciting, the perfect backdrop for tall tales, quiet reflections or intimate moments.

Leon Potterton is a recently retired Steamfitter, certified Welder and Weld Inspector who now enjoys having his own business working as a mobile Welder which allows him more time to pursue his artistic talents with recycled metals.



FIRE SPHERES
FIRE SPHERE FIRE PITS
FIRESHEREFIREPITS.COM



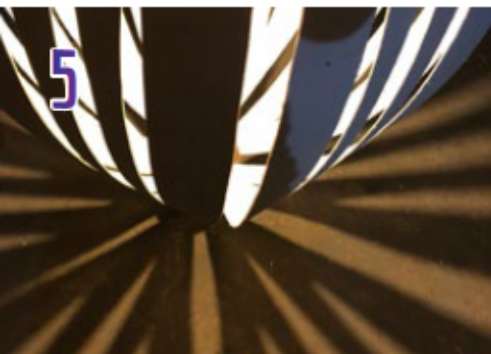
The unfurling fern shape, called "Koru" by the Maori, is an inspiring symbol that represents evolution, growth, harmony, and new life. Koru conveys a sense of perpetual movement, and return to the point of origin - just as life both changes and stays the same. The Koru-dor magnifies and amplifies the tiny unfurling fern frond into grand, vividly glowing forms that we hope will foster wonder. Creating a space to think about the movement in our lives and provoke a sense of connection to the natural world.

S'more Art Co. is an installation art team of Bailey Haack & Alissa Kolom. Bailey is a Midwest-grown floral designer whose plant-passion inspires the organic forms found in all her mixed-media arts. Alissa is a California based photographer and woodworker who is deeply inspired by trees. Together, they strive to create immersive art that brings nature's surreal details into focus. When they're not creating, the two can be found exploring with their dog, best friends, or roasting marshmallows by a campfire.



THE KORU-DOR
S'MORE ART CO.
INSTAGRAM: @SMOREARTCO
SMOREART.COM





5

WHERE THERE IS LIGHT,
THERE IS SHADOW
MICHAEL TALUC

FACEBOOK.COM/MIKE.TALUC

Inspired by prior experiments in the movement of lines and lights, this work is an exploration into more traditional mobile forms.

Michael Taluc builds large scale mobiles as an analog counterweight to his digital work world.



6

PORTAL
CHANCE CI AND CHRIS PITZER

FACEBOOK.COM/PORTALLIGHTART

Portal is a collaboration between two artists, Chance and Chrispy. They have built a transparent, glowing, light sculpture: an abstract, layered form that plays with lights in motion and lets you view the world around you through a prism of rippling color.



GeffenMesher

The Chromosphere, or "sphere of color," is an interactive, animated LED art sculpture in the shape of a large, hollow, wire-frame sphere. The sculpture is named after the layer of the Sun's atmosphere that is normally only visible during total eclipses as a thin, rosy red-colored edge.

Like the Sun's chromosphere, the 2,400 LEDs covering the Chromosphere only reside on the outer edge of the sphere, where they dance and animate with various patterns and colors.

The sculpture reacts to sound, enabling participants to affect the motion, color, and intensity of the animations with voices and other sounds. In this manner, the audience can manipulate light with sound, and also interact with other participants.

Chris Condrat has developed interactive LED-based art since 2010 that has appeared at multiple festivals and events. He enjoys creating interactive art that pushes the boundaries of technology, involves multiple senses, and enables participants to become part of the performance.



THE CHROMOSPHERE CHRISTOPHER COND RAT

INSTAGRAM: @THECHROMOSPHERE



Stardust is a whimsical oasis. Its overall look is both ethereal and otherworldly.

Visitors are drawn to a glowing, pulsing, low-lying mystery disc. As they venture closer they'll see it's actually a flying saucer – and a comfy bench! Their motion triggers a pattern change in the landing lights.

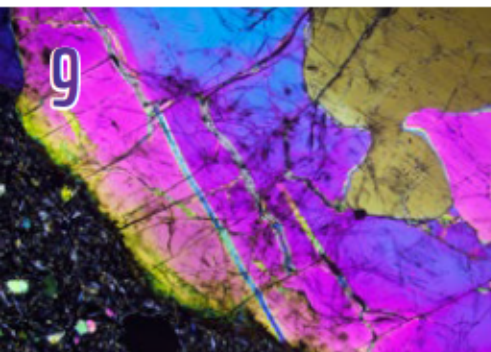
An illuminated Galactic Tube embellished with glowing celestial bodies extends from the bench's center. Cosmic Rays, dripping with end glow fiber optics, splay up and out of the tube, creating "stardust" overhead.

Stardust is Paige's first ever large-scale art installation. Originally inspired by the murmuration of Chapman Elementary School's Vaux's Swifts, her design morphed into a celestial-themed piece that debuted at Burning Man 2018 as a Black Rock City Honoraria Grant recipient.



STARDUST PAIGE TASHNER

WEARESTARDUST.ART
FACEBOOK.COM/STARDUSTARTINSTALLATION



POLARIZING CRYSTAL LANTERNS

TAMI CLARK

INSTAGRAM: @MINERALVISIONS
MINERALVISIONS.COM



The Crystal Lanterns emit vibrant colors that tell a story of light dancing in all directions until colliding with the unique surface of each paper-thin crystal. The Crystal Lanterns combine light, geologic microscope slides and polarizing filters to reveal the natural glisten and flicker of light interacting with the crystal surface. Ordinarily, light waves vibrate in all directions, but the use of a polarizing filter refines the light to a single plane.

Tami Clark, transfixed by the beauty of minerals beneath the microscope, created MiNERAL ViSiONS, an art platform designed to share mineral photographs. As the project evolved, ideas converged, the temperature and the pressure began to build and the chemical composition of the project began to metamorphose — secretions of quirky mineral items soon crystalized! Made with recycled materials, the lanterns are the most recent design accretion to erupt from the MiNERAL ViSiONS bedrock.



DREAM HOME

MATT SIPES

INSTAGRAM: @1MATT SIPES

This sculpture is a rendition of one of the many new condominiums that have taken over Portland in the last ten years. The condo is the furnace and we will have hundreds of tiny wooden houses for people to write on and throw into the fire. The houses represent all of the actual houses that have been demolished in Portland to make way for new developments. The audience is invited to write their dreams, house-related or not, on the tiny houses and burn them.

Matt Sipes is a designer for Neil Kelly, a prominent remodeling company in Portland, Oregon, and has worked in the remodeling industry for over 20 years. His current position is a Design Consultant. The job allows him to design dozens of different remodeling projects a year and he loves it! In Matt's off time he designs and builds less functional things like fire sculptures and lighted fish.

As We Go FORWARD is a collection of over 150 individually handcrafted ceramic lanterns created by the sixth, seventh, and eighth grade art students of Inza R. Wood Middle School in Wilsonville, Oregon. These lanterns represent the journey one is on during the pivotal, uncertain, exciting, and transformative years that are middle school. They represent the lighting of a path to the unknown. These lanterns also serve as reminder that as we find our way in life, our decisions lead to consequences that affect our community and have the potential to change the world. The journey ahead is full of possibilities and we each strive to be a bright light.

The art students of Inza R. Wood Middle School are a diverse group of creative, open-minded, and hard-working artists. In the studio the students learn a variety of ways of making with an emphasis on how artists are makers of change. They have been learning to express themselves as they discover who they are, who they want to be, and the impact they will have on the world.



11

AS WE GO FORWARD INZA R. WOOD MIDDLE SCHOOL ART STUDENTS

INSTAGRAM: @IRWMSART



Warm Embrace welcomes visitors with a cozy destination away from the winter chills while bathing its tenants in colorful LED lights and reflections. Inspired by the architecture of the American Indian Tipi, Warm Embrace establishes a place for gathering, gazing, and camaraderie. Warm Embrace is prepared to follow in the footsteps of its nomadic predecessors: forging ahead to welcome future nocturnal visitors.

Garth Britzman, originally from the Great Plains of South Dakota, is a theme park designer and fabricator of immersive environments. He seeks novel uses for ordinary materials, upcycling them into aggregated objects that encourage discourse on sustainability, lifestyle, and fashion. Collaborator Kelsey Loontjer is a Portland local well-versed in the challenges and nuance of large scale art installation. Their collaboration brings together the proper tools for illuminated architectural excellence.



12

WARM EMBRACE GARTH BRITZMAN AND KELSEY LOONTJER

GARTHBRITZMAN.COM





FIOS THE SEA STALLION
CLAY MCCABE, BRANDON SHAW,
ELEANOR BUELL, AND SARAH MEYER
MCCABEART.GALLERY

Fios is an ancient entity of the sea, representing the wisdom and power of the element water. Standing over 10 feet tall, he is an elaborate mixture of steel, copper, cedar, and blown glass. Each piece was handcrafted by a dedicated team of talented artists working in a freeform flow of creation. By day the intricate details shine in colors and textures blending the materials into a complex and elegant form. At night he transforms, illuminating from within, breathing life through colors.

Working in large-scale 3D form is a humbling and magical experience. Clay finds great joy bringing people together in creative process and being part of something bigger than himself. Inspiring hands and hearts to share unique and powerful creations with the world.



FAST FORWARD >>
WATERLEAF ARCHITECTURE

WATERLEAF.COM
INSTAGRAM: @WATERLEAF_ARCHITECTURE

A series of arches shine as beacons in the night. Each arch marks the passage of space and time, suggesting a direction of movement, forward. You are drawn to the sequence and discover that within this arcade exists an entire universe. Stepping inside you are amongst the stars, beyond the earth. Suddenly the stars are moving... or are you moving? At the speed of light you fly through the cosmos - forward to the future and new worlds.

Waterleaf Architecture is a local firm with expertise in design, planning, and interiors for a diverse range of project types. We are honored to bring our creativity to the wider community as part of the PDXWLF and to be inspired by the beauty and wonder when light, art, and science meet. Special thanks to Schommer & Sons for their contributions of time and expertise. Explore our design process on Instagram and Facebook. @waterleaf_architecture

Shadow Sail Theatre is an immersive installation designed to capture the shimmering nuances of shadow art. Intricate paper-cuts layered with found materials such as lace, glass, prisms, lenses, and dichroic film transform into large scale projected works of art. Paper lace costumes alter the human silhouette to create new lyrical forms, activating the shadow environment with movement and light.

Sparks Designs engage collective action and inspired participation through immersive sculptural and performative works of art. Conjuring detritus into divine illumination, they reflect everyday magic. Their dreamscape environments vividly bring to life forms from nature and the sublime absurdity of play.



15

SHADOW SAIL THEATER SPARKS DESIGNS

SPARKSDESIGNS.XYZ
INSTAGRAM: @HDAWNSPARKS

OSRAM

Crystalis is a 3D illusion about transfiguration and rebirth – a story told with light. As a figure evolves within a cloud of fog, an image is reflected by and through multiple planes within the structure. The ghost-like apparition is neither solid nor transparent, real or unreal. The viewer's challenge is to reassemble the multiple projected images of light and movement into a recognizable story.

Crystalis was conceived and fabricated for the Portland Winter Light Festival by Eichinger Sculpture Studio and Koble Creative Architecture to engage viewers while celebrating the power of collaboration. Additional participants and contributors include Jillian St. Germain – Body Vox, for choreography and performance; Walt Dimick – Dimick Motion Pictures, Director of Photography; Dan Ackerman – Stage 13, stage and lighting; Michael Koerner – Koerner Camera Systems, cameras; Tim McClelland – Pro Sound and Lighting, projectors; Dashiell Atherly – Editing; and Robbin Atherly – Producer, video production.



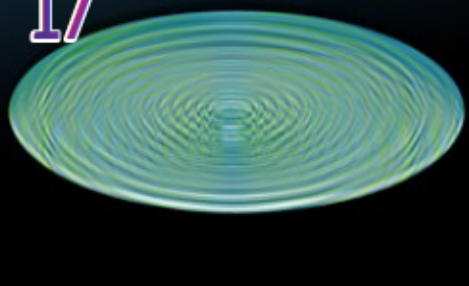
16

CRYSTALIS EICHINGER SCULPTURE STUDIO AND KOBLE CREATIVE

EICHINGERSULPTURE.COM
KOBLECREATIVE.COM

/koble/CREATIVE

17



WISHING WELL FIGURE PLANT

FIGUREPLANT.COM



FIGURE PLANT

Wishing Well is an interactive experience which is both an exploration of expectations and of curiosity. Through form and scale, this piece will beckon viewers from afar and invite them to an experience in close proximity to both friends and strangers — and may blur the difference between.

Figure Plant makes incredible happen. They are artists and inventors, mad scientists and makers, thought leaders and solvers. For more than two decades, their team has crafted interdisciplinary, interactive, and immersive experiences for film, stage, and advertising. They love bringing their clients' visions to life, and look at the Portland Winter Light Festival as a rare opportunity for their team to craft experience for art's sake. They are so excited to come together with the community, in the spirit of creative play and to transform Portland with light.

18



ACTIAS LUNA HACKER/GUILDWORKS

HACKERARCHITECTS.COM
GUILDWORKS.COM
INSTAGRAM: @HACKERARCHITECTS

Actias Luna (the most beautiful moth) is an immersive spectral glowing cocoon of color, fog, and music that will delightfully transport all six of your senses.

Hacker and GuildWorks, Co-Architects of Earth & Air, collaborating to make Magic, Joy and Delight!

HACKER



GuildWorks
Architects of the Air

Axis Mundi is an intricate laser-cut geometric shrine lit by thousands of individually addressable LEDs. Emerging from the inside of the structure sits a 3 foot tall kaleidoscope. Within the mirrors of the kaleidoscope is an ever changing, infinitely reflected globe of organic growth, cosmic convergence, and fractal patterns. Paying homage to the space between micro and macro, Axis Mundi envisions the boundaries of our own microcosm of existence while exploring the possibilities of the undiscovered.

Axis Mundi features code by Lilli Szafranski that is forever random. Within 15 minutes her algorithm will have chosen between more possible combinations of colors and patterns than there are atoms in the universe.

Thirty Circles specializes in creating immersive experiences, storytelling through branding, & human-centered design. We're passionate about work that affects people's perspective. We believe that art and design have the power to make the world a more beautiful & cohesive space.



AXIS MUNDI
THIRTY CIRCLES
THIRTYCIRCLES.COM



A collaboration between local Portland visual artists using projection as a medium.

Brent Williams

Multimedia artist specializing in interactive installations and large-scale displays for live events and retail locations, creating emotional response via immersive sensory environments.

Andrew Wayde Smith

Independent media artist focusing on creative audio visual and lighting displays for museum exhibits, retail and public spaces, live performance, as well as permanent architectural applications.

Jessey Zepeda

Multi-disciplinary artist who specialize in custom fabrication and the realization of technical art projects that are collaborative in nature. From painting Trompe-l'œil murals to Projection Mapping set's and environments, me and my team can help you execute your next project efficiently and effectively.

Amy Meyer

A communication designer based in Portland, OR. From building brands to installations, she aims to create abstract, visceral experiences through design.

John Hunter

A creative technologist who has performed live visuals in Portland for the last 25 years. His experimentation with modern visual technologies include creative coding, AR, projection mapping, and many other mediums. Each new performance offers a balance of complex technical design and creativity.



Portland Pixel Party

20

PORTLAND PIXEL PARTY
BRENT WILLIAMS, ANDREW WADE SMITH,
JESSEY ZEPEDA, AMY MEYER,
& JOHN HUNTER

JOHN HUNTER - INSTAGRAM: @FUNKTION_MEDIA
ANDREW WADE SMITH - PROCESSARTIFACT.COM
JESSEY ZEPEDA - JESSEYZEPEDA.SOLUTIONS
AMY MEYER - AVANTHUIT.DESIGN

MEYERPRO

21



SALMON IN THE CITY MATT SIPES AND JOSS MALLET

INSTAGRAM: @JRMALLET
INSTAGRAM: @1MATTSIPES

Glowing in the river, this school of salmon plays off the lights of the Tilikum Crossing and invites you to imagine the wonders of a river teeming with life as it once was. Even today there are salmon in our city, but as their numbers dwindle many of us have already forgotten them. Can we imagine a gentler, more beautiful future? If we could recapture our wonder and awe of the world around us, perhaps we could become the stewards our environment needs. But time is running out — we need to step forward now before our nearly forgotten neighbors are gone forever.

Joss Mallett is a Design Consultant with Neil Kelly Design/Build. One of her favorite projects was working with local artists and tile makers to create the installations under the Tilikum Crossing bridgeheads. Taking breaks from the practical to make works that serve only to share beauty and tell stories helps replenish her creative soul. Matt Sipes - see installation Dream Home for bio info.

22



A spherical sculpture with multiple viewpoints to inspire one to look forward, look inward, and look onward. Inside of the sphere, lights project patterns in all directions, saturating the senses of the beholder.

Axiom Custom Products is a American manufacturing and design company bringing a high-tech digital interface to traditional fabrication methodologies. Our capabilities include full wood production, metal fabrication, in-house design and engineering, digital and traditional sculpting, 3D printing, electronics, and more. We are a team of talented designers, craftsman, artists, and engineers who work hard. We solve the problems that everyone else calls impossible, with an eye on the future, a hand on the sketchpad, and our heart in the shop.

RETINA AXIOM CUSTOM PRODUCTS

AXIOMCUSTOM.COM



Incogo is a future plant that aims to create the abstract experience of flora not typically found in the Pacific Northwest. In this way, it is a playback device for natural beauty. The sculpture acts as both a time capsule and a possible future instrument for having experiences we might lose to a changing planet. As we move forward, Incogo is a reminder and monument of the now. If demise is the future, perhaps Incogo can comfort us with familiar patterns and colors.

Taylor Dean Harrison creates mixed-media sculptures and installations designed to create suffusive moments of mental peace.



INCOGO

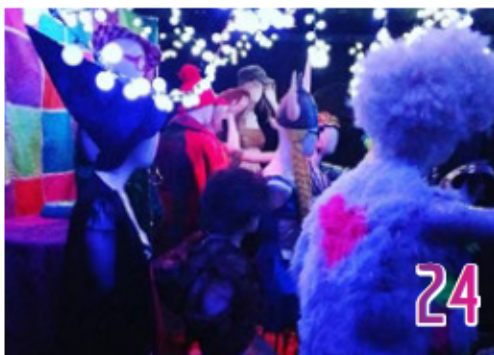
TAYLOR DEAN HARRISON

INSTAGRAM: @TAYLORDEANHARRISON



Refractive Highlights is a suspended canopy of lights and mirrors rigged between trees, creating a matrix of sparkles to travel under. This installation plays on the viewers' position within the space, and interacts with the movement of Portland's beautifully disruptive winter weather. Hundreds of LED spheres intermingle with hanging mirror shards, lit using abstract generative visuals based on a time-based color scheme, all strung overhead for an immersive journey through space.

Savory Lighting Design is an event production and lighting design company that creates visually rich environments and installations using light, sound, and a touch of magic. We bring innovative creative design work to event production, stage design, and customized lighting installations for a unique and memorable experience.



REFRACTIVE HIGHLIGHTS
SAVORY LIGHTING DESIGN

SAVORYLIGHTS.COM





ARIS THE SPINNING HEAD JAN CARPENTER -JCARP-

JANPDX.COM

With all the seriousness, there is a lighter side of light to be experienced. Rooting in strong structure, the industrial foundation of the 1920s, and a colorful mechanical device driving the movement. We don't have to be perfect, or even super heroes. Just the grinding of our gears to make it work, can be interesting to share. Bringing in a little art to help ease the strain of everyday life. Initiated by close encounters, this robot can share some of its light.

Functional realist Jan Carpenter enjoys creating mechanical delights out of found objects and repurposed tools.



ASCENDANT GROVE SCOTT KEVA JAMES

FACEBOOK.COM/SCOTTKEVA

Ascendant Grove is an abstracted recombination of visual media, meant as a real world manifestation of an active visual imagination. Mostly, the grove is about energy and motion, and that motion responds to you: your presence and your voice. So talk to it, sing, whistle, or shout — see what you can do with your voice.

Scott is a Seattle-based audio/visual artist, working primarily with found imagery and light, using video and projection in real spaces. He has recently been moving from pure live performance work into stand-alone installation pieces. He is always excited to put responsive, interactive physical works, into real spaces, where they can be seen by, and respond to live people. His recent work consists of three main elements: video projection into real space, unpredictable composition based on internal logic, and reactivity to the immediate environment.

Light Opera will be an expression of music through the use of lights. Featuring a complex light show choreographed to music.

Showcall is a local Portland entertainment lighting house. We supply rental, sales, service, and production to a wide array of lighting fixtures and control.



LIGHT OPERA
SHOWCALL EVENT SERVICES, INC.
SHOWCALLSERVICES.COM

ShowCall
ANYTHING IS POSSIBLE

Eternal Fire of Stupid Ideas is a three sided obelisk sheeted with metal relief panels and backlit with LED lights. Atop the structure, the Eternal Flame of Stupidity burns brightly within the large dish mounted to the top of the tripod. Participants are able to submit their thoughts and stupid ideas by placing them inside the podium in front of the structure. These ideas will be evaluated by the Eternal Flame and if deemed exceptional or befittingly stupid the obelisk will react with a poof of flame, signifying its approval.

Larry Lemanczyk is an Architect in Portland Oregon, Jonas Nash is the founder and curator of AFRU Art Gallery and owner and operator of NB Rigging LLC in Portland, Oregon, and Steve Vetro is a disgruntled Post Office worker and lead of Nasty's Dive Bar from Eugene, Oregon.



ETERNAL FIRE OF STUPID IDEAS
MINISTRY OF STUPID IDEAS
FACEBOOK.COM/MINISTRYOFSTUPIDIDEAS



MESH TNGSTN_LITWORKS

INSTAGRAM: @TNGSTN_LITWORKS
JASONPREDOCK.COM



Mesh is a study of how we deconstruct form and find irregularity within its geometry. LED mapping gives it life. Mesh addresses the 'Forward' theme of PDXWLF literally by taking the shape of a giant arrow pointing forward, into the future, into progress, into forward thinking, into whatever forward motion one can imagine. Pixel mapping deconstructs geometry with irregular patterning and morphing linear structure into nebulous mass. Consistency and inconsistency, predictable and unpredictable, much like the state of the world today.

Jason Predock, principal designer and owner of TNGSTN_liteworks is a SF Bay Area-based lighting designer and artist. Jason grew up in New Mexico where there is a strong sense of environment, reflected in his desire to design pieces that have place and meaning. From an environmental standpoint, all of his materials are reusable and utilize low draw, eco-friendly LED technology.



10 PRINCIPLE LANTERNS JT THOMPSON

FACEBOOK.COM/FOUNDRY-20-141460552567510

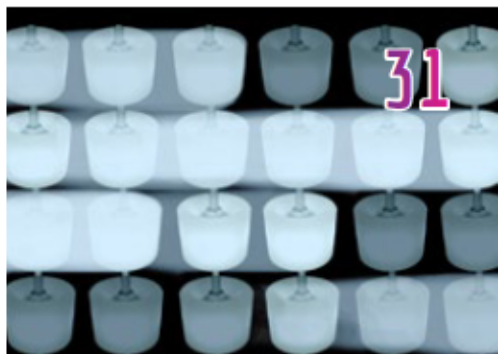
The 10 Principle Lanterns illuminate a path forward with pictorial representations of the 10 Principles of Burning Man. They are based on open source art by James Wickham. The Principles are: Radical Inclusion, Gifting, Decommmodification, Radical Self Expression, Communal Effort, Civic Responsibility, Leave No Trace, Participation and Immediacy.

Beyond the desert, these principles provide goals that, when applied to our community, can provide for a future that is more inclusive, creative and generous. One that builds community, respects our environment, and strives to be self-sufficient while caring for those less fortunate than ourselves.

JT Thompson is a member of The Foundry 2.0, a local collective of artists, makers and musicians. It is an incubator for creativity in the inner Eastside.

Kinetic De Light is an opportunity to create light and joy together. Hundreds of kinetically illuminated skateboard wheels create a playfully dynamic installation that is an ever-changing reflection of visitor energy. A touch of the hand spins light from one wheel to the next, creating streaks of light that fade like comets. Randomness and patterns emerge from the ebb and flow of users' interactions. Spin some light together!

Mayer/Reed, Inc. is a design studio providing urban design, landscape architecture, and experiential graphic design services for the environments in which people live, learn, work, and play. Our studio's work in creating places for human activity explores the social, cultural, ecological, and historic contexts that shape these environments.



KINETIC DE LIGHT MAYER/REED, INC.

MAYERREED.COM
INSTAGRAM: @MAYERREED

Mayer/Reed

The Flaming Heart is a universal symbol of love and fiery desire.

Richard Cawley has been making sculptures to warm the hearts and minds of people for the last 20 years.



THE FLAMING HEART RICHARD CAWLEY SCULPTURE DESIGN

RICHARTSCULPTURE.COM
INSTAGRAM: @RICHARDCAWLEYSCULPTURE



ILLUMINATION AT PLAY KELLY CAMPBELL

RICHARTSCULPTURE.COM

INSTAGRAM: @RICHARDCAWLEYSULPTURE



Shadow Puppetry: Experiential Play and Construction will be led by artist Kelly Campbell. Children are invited to explore light and shadow, reflection, refraction, and geometry in this drop-in experience. Participants have the opportunity to play with various styles of shadow puppet stages and screens with professionally pre-made puppets. Simultaneously, there will be guided shadow puppet and stage construction/building. Space and supplies are limited and the hours for this program are 6pm-9pm.



MONOLITH SYNTH WITH LED ANIMATION PAUL STOFFREGEN

[YOUTUBE/H_G0BPEGAJ8](https://www.youtube.com/watch?v=H_G0BPEGAJ8)

The Monolith Synth is an interactive sound sculpture, making it fun for anyone to create beats and impromptu musical performance. The Monolith Synth was made in collaboration with Ross Fish of Mofenzeef Modular, Darcy Neal of LadyBrain Studios, and Ben Davis of Malekko.

Paul Stoffregen is an entrepreneur & electrical engineer with a passion for overly ambitious projects.

The Lamp's shape was inspired by the Truffula trees of Dr. Seuss's "The Lorax"; images in its crown were drawn from things found around Portland's rivers to its skies. LEDs inside its rotating top cast images on nearby walls or placards held by visitors. Originally made for the 2017 Portland Winter Light Festival, the Lamp is returning to cast its images in 2019.

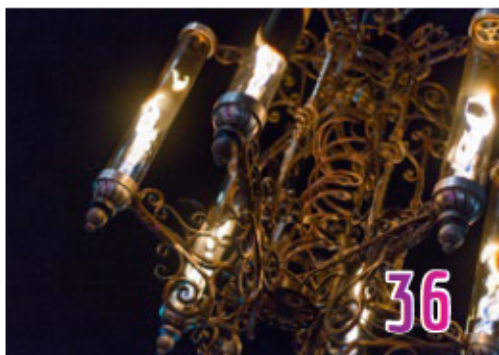
Richard Miner and Tom Barnes like to make things. The Portland Winter Light Festival inspires them to make lit things for the public's enjoyment.



**A LAMP TO READ SEUSS BY
RICHARD MINER AND TOM BARNES**

The Dragon Twist Chandelier is an ornate, wrought iron and aluminum chandelier with 6 arms, each holding a 2 foot tall, 4 inch wide quartz tube containing a fire tornado. Built using traditional scrollwork, the chandelier is primarily renaissance in style, but incorporates fire tornadoes for a dramatic juxtaposition of modern technology and traditional styling.

After Dark Arts is a collective of artists working out of Portland, Oregon. We create one-of-a-kind interactive art installations with a focus on play and whimsy. We leverage a variety of mediums to create satisfying experiences that inspire wonder. We turn fantasy into reality with panache and a splash of magic.



**DRAGON TWIST CHANDELIER
RYAN RAMAGE AND CHRIS LOHKAMP
OF AFTER DARK ARTS**

INSTAGRAM: @AFTERDARKARTS



PICCOLO DUO DI CORDE SETH BYRNES AND DUSTY VISIONS IN COLLABORATION WITH ALBERTA ART WORKS. MURAL ARTWORK BY KANGO AND MCTOOLS

DUSTYVISIONS.ORG/

GreenspoonMarder



Piccolo Duo di Corde is a pair of large scale interactive sculptures: Primo Violino and Secondo Violino. The instruments stand 11 feet long by 4 feet wide and stand upright, allowing participants to play their interactive harps. Interrupting the sensors prompts music to be played on internal speakers and the notes are transformed into light patterns along their dynamic LED strings. Both instruments also feature painted mural facades curated by collaborating nonprofit Alberta Art Works.

Sponsored in part by grants from Ignition Northwest, the Multnomah County Cultural Coalition, the Oregon Country Fair and the Oregon Cultural Trust.

Special thanks to Anna-Gaëlle Marshall.

Dusty Visions is an Oregon nonprofit organization whose mission is to create and support community-driven and Burner-inspired participatory art, events, and education. We believe that art is meant to bring people together, nurture social interactions, and kindle human collaboration; from its design and execution, to its exhibition and audience interactivity.



CHROMAKEY JUSTIN MILLER

[TWITTER.COM/INCANUS77](https://twitter.com/INCANUS77)

Bang on things, create sound and light! And think about how to reuse things around you and how to follow your interests and never stop learning!

This is Justin's first installation and a chance to continue to explore some of the building and electronics skills he has been working on recently.

Justin is a computer programmer by trade and a tinkerer, builder, and problem solver at heart. He has spent over twenty years working in a variety of startups and self-led positions, from the early foundations of the commercial internet, to the early days of social media in advocacy and political causes, to the early days of the app store and the smartphone revolution. Along the way and outside of normal work, he has pursued hobbies such as world travel, camper van conversion, performing magic, and dabbling in whatever new and exciting things come along.

Aural Borealis invites you to create music with your movements. Each stepping stone plays a unique sound and light pattern, inviting you to create your own score. Each sound works in harmony with the others, so you can try every possibility with friends and strangers until you find your favorite combinations.

Instrument is an experience innovation company, located in Portland, Oregon.

39

INSTRUMENT

AURAL BOREALIS
INSTRUMENT
INSTRUMENT.COM

The Cosmic Fire Turtle is a pictographic messenger for the future, telling the story of when the creatures of earth were threatened by global weirding. This story is intended to inspire us to change our actions and heal our fragile environment. This turtle is fueled by the creative power of youth and community support, crucial ingredients for positive impact in our world.

Portal Arts Collective transforms trash into art in order to educate communities about the process of creative material reuse and our environmental impact, advancing a regenerative future that is focused on personal accountability and collective action.



COSMIC FIRE TURTLE RICHARD CAWLEY AND PORTAL ARTS COLLECTIVE

PORTALARTSCOLLECTIVE.ORG
INSTAGRAM: @PORTALARTSCOLLECTIVE

OREGON

Oregon
Convention
Center

41



DaveTheMaker

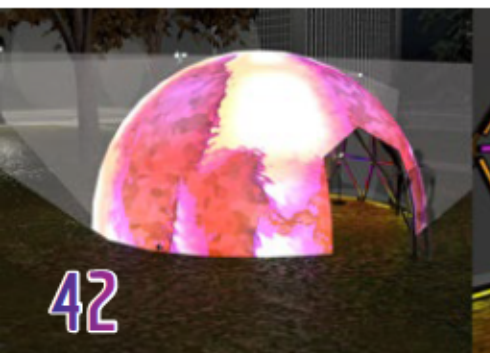
LUMENARY
DAVE THE MAKER

DAVETHEMAKER.COM

Lumenary is an art piece which invites the viewer to consider the holistic and interconnected nature of the cosmos, body, and spirit, while raising consideration of the latter in terms of modern technology. Lumenary offers a modern interpretation of illuminated manuscripts created in medieval times by the mystic philosopher and humanist Hildegard of Birken, who celebrated the sublime and transcendent through creative expression and to voice her authentic beliefs. Created with a variety of mixed media, with a dash of electronics and microcontrollers, a splash of hand-made sweat labor, and shaken and stirred with artistic resolution.

David Eliason is a Maker who is interested in the intersection between art, spirituality, and technology, and the creative results that can be used to empower individuals and communities. With a graduate degree in spirituality and art studies, and years of working as a social worker with persons with developmental disabilities, David stumbled across programming and electronics, and has since set upon a path to use code and electronics to make things that will invoke the heart, inspire the mind, and create practical and meaningful solutions to everyday problems that impact our bodies.

42

INSIDE OUT
HENRY V

HENRYEVENTS.COM

Inside Out is an exploration of movement in reflection and the duplicity of creation. Take a step inside and interact with the creation of light and sound as you become transported externally as a reflection of your creative self.

Henry V is a band of artists and technical explorers in immersive experiences. It is our mission to change the way humans connect with brands by creating unique and impactful experiences.

henry V

How does one keep thousands of festival goers warm and happy? Ivan's Fire Balls have kept the frost off of attendees at What the Festival for years and now will be gathering points for folks to warm up, gather, and listen to stories. Take out your buds and listen to a human speak to other humans, not a podcast but an actual human! A Turing test will be given to all presenters just to be sure....

Ivan has been creating furniture and sculpture since the age of the dinosaurs with all kinds of materials and intentions for public and private spaces around the country.



FIRE BALLS

IVAN MCLEAN, MOONSHINE EVENTS,
WHAT THE FESTIVAL

IVANMCLEAN.COM

INSTAGRAM: @IVANMCLEANART



Chromata is a large-scale contemplative, interactive exploration of form, color, and symmetry — a sort of abstract painting that constantly repaints itself. Use the tablet application to choose the colors, speed, and symmetry of Chromata's ever-changing sea of light, or just rest a while in its swirling glow.

Bryan Ressler creates generative light art that is never the same twice.



CHROMATA

BRYAN RESSLER

COGNICOLOR.COM/BRYANRESSLER





WINTER TRAINS
ILLUMINATING ENGINEERING SOCIETY
JESSIE SMITH
IESOR.ORG

Winter Trains focuses on using dynamic color changing lighting and gobo effects to bring out the playful side of the Oregon Rail Heritage Museum's resident trains. From the warm glow of the engine and the hiss of the boiler to the rhythmic turning of the wheels, let these larger than life locomotives transport you back to the Railway Age.

Thanks to the volunteers from the Portland IES chapter.

GLUMAC
experiences for a sustainable future

illuminating
EXPERIENCES SOCIETY



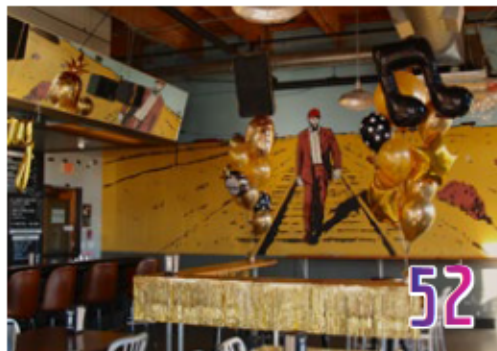
DISCOVERY THROUGH VANTAGE POINTS
WALKER MACY LANDSCAPE ARCHITECTS
AND LUMA LIGHTING DESIGN

INSTAGRAM: @WALKERMACYLA

Multiple curved walls are distributed throughout the festival, forming a veil that obscures peripheral views and focuses attention through a single custom aperture with the goal of personal discovery. Dynamic lighting effects are amplified by poetic composition of veil and frame and provide tactile and stimulating experiences for visitors. See lights through vantage points, capture details, notice isolated site elements — the river, iconic structures, plants, other installations. We believe that 'forward' happens as a collective, and so this design is about enriching the experience of the entire festival and Portland nightscape.

WALKER | MACY





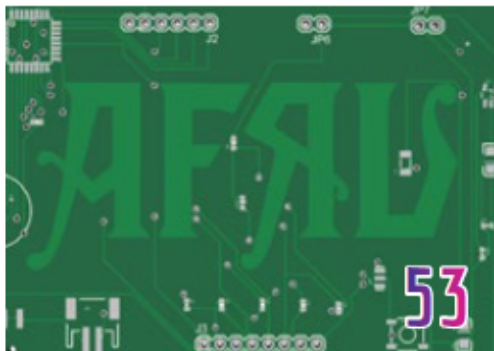
**INFINITY X INFINITY
BUNK SANDWICHES**
11AM-11PM

BUNK

1028 SE WATER AVE
BUNKSANDWICHES.COM

Stop by Bunk on your way to and from PDXWLF to observe our infinity reflecting LED installation.

LED by LeBrent was started four years ago in Brooklyn, NY to produce large scale LED Installations for major corporations. With installations featured at the Summer Olympics in Rio and design week in Milan, Italy, LeBrent has pushed the limits of what LEDs can do, and proven time and time again that LEDs are a source of power and heat in more ways than expected. OPEN: 11am-11pm



**BYTE ME!
AFRU GALLERY**

534 SE OAK

FRIDAY 2 - 6PM
SATURDAY 12 - 4PM
SUNDAY 2 - 6PM

AFRUGALLERY.COM

ByteMe! showcases unique local and regional art that requires technology to make its point. Dazzle your senses and interact with pieces at this multimedia extravaganza.

AFRU Gallery is an independent art gallery run by three disembodied heads floating in jars that tell the volunteers what to do.



This unique pop-up experience will feature dynamic lighting and art installations, music, and a bar and lounge where festival goers can have a drink and relax for a moment before heading on to the next festival site. This pop up experience, presented to you by PDXWLF, will feature the Projection Artwork of Larry Yes, and Josh Kottler of PXLMatrix. All proceeds directly support keeping the PDXWLF free and open to the public! The spac is 21+ and is sponsored by Deschutes.

Made by Josh Kottler in 2014, individual RGB pixels make up lo-res, flexible LED curtains, creating mesmerizing visual effects. PXLMatrix lighting effects have been a part of each Portland Winter Light Festival since the start. www.PXLMatrix.com. Larry Yes is a socially-engaged artist, songwriter, and musician whose work focuses on positivity, humor, and fostering social bonds through creativity. He is currently obsessed with building 3D rainbows and shaking thee light fantastic with his family and friends. www.larryyes.com

**GLOW:
A POP-UP ART BAR
PDXWLF**

7PM - MIDNIGHT
2250 SE WATER AVE



SMARTTECH
LIGHTSOLUTIONS

thane
woodworking



YAMHILL VALLEY
VINEYARDS



BUBBLE WAGON WITH AIRPUP SURVEILLANCE CONTROL H AND DORKBOTPDX

[TWITTER.COM/CTRLHPDX](https://twitter.com/CTRLHPDX)

The bubble wagon is cycle powered and provides a mobile platform to move bubbles, lights, and surveillance around the city. The bubble wagon is outfitted with an overhead camera capturing real-time surveillance. The video feed is augmented with a computer vision algorithm and then projected for real time viewing by the bubble-goers surrounding the wagon. The wagon highlights the excitement of our digital world while hinting at the perils of machine-assisted surveillance.

Control H (aka PDX Hackerspace) Open House is every Thursday night, 7-9pm. Come for a tour of our space and see the equipment and projects we have been working on. All are welcome. DorkbotPDX meets Monday nights at PDX Hackerspace. DorkbotPDX is the Portland chapter of Dorkbot, people doing strange things with electricity.



PDX DISCO DRAGONS MISTY POST AND PEEPS

[MISTYPOST.COM/PDXDISCODRAGONS](https://mistypost.com/pdxdiscodragons)
INSTAGRAM: [@PDXDISCODRAGONS](https://www.instagram.com/pdxdiscodragons)

PDX Disco Dragons are wearable light-up dragon costumes. Misty created the first Dragon, Porngy (pink & orange) in 2014 for a friend's birthday light parade. More dragons followed, each one a little lighter, more compact, some with body sections, and all with more mirrors and LEDs! The PDX Disco Dragons have attended all three Portland Winter Light Festivals. They have also danced their way through the last two Starlight Parades, delighting (and scaring just a few) children and adults. The Dragons accidentally started the 2018 Luminary parade on a rainy night in Olympia at the Procession of the Species. They will be back at PDXWLF 2019 roaming around the grounds and dancing in the Lantern Parade. Keep an eye out for a bouncing, dancing, giggling, roving mass of pink, orange, white, green and silver!

Misty Post is always making something fun. She is a local Portland artist. She loves sharing creative ideas with friends and strangers, including scavenger hunts, random parades, life sized Clue and Foosball, and encouraging laughter at all times. If you hear loud giggling, she is probably close by.





JELLYFISH AND OBELISK RICHARD MINER AND TOM BARNES

Jellyfish and Obelisk are in motion. Obelisk shows the wisdom of the ages, and wants to share it with everyone. Jellyfish always seeks wisdom, but can't seem to remember what it learns. Though Obelisk basks in its friend's attention, it is embarrassed by Jellyfish's ephemeral memory. And while Jellyfish wants to learn, it is easily distracted. They both run to and from each other, and will chase each other throughout the festival.

Richard and Tom are friends who make things. For the festival, they team-up to make glowing things that challenge and stimulate their creativity.



THE BOOTYBUMP SCOTT SUNN, TOR CLAUSEN, RYAH RADOMSKI, SCOTTI, ANDY SHAPIRBRO & SARAH BALCOM

VIMEO.COM/155333376

The Booty Bump is a mobile disco, designed to bring the tunes & pretty lights full force and throw down the party anytime, anywhere. The Bump can traverse any terrain, with space for two gogos on its light up disco dance floor, and transforms into a popup DJ booth in a flash. This beautiful party starter unifies form and function to git'er dun in style.

Originally conceived & fabricated by Tor Clausen (Musical Furnishing), Scott Sunn (Tracer Visuals), & Ryah Radomski, and funded by our extended community of superpals; Scotti, along with Andy ShapirBro (AND/OR) & Sarah Balcom (DJ PomPom), are proud to present the third incarnation of The Bump to our favorite festie fam.

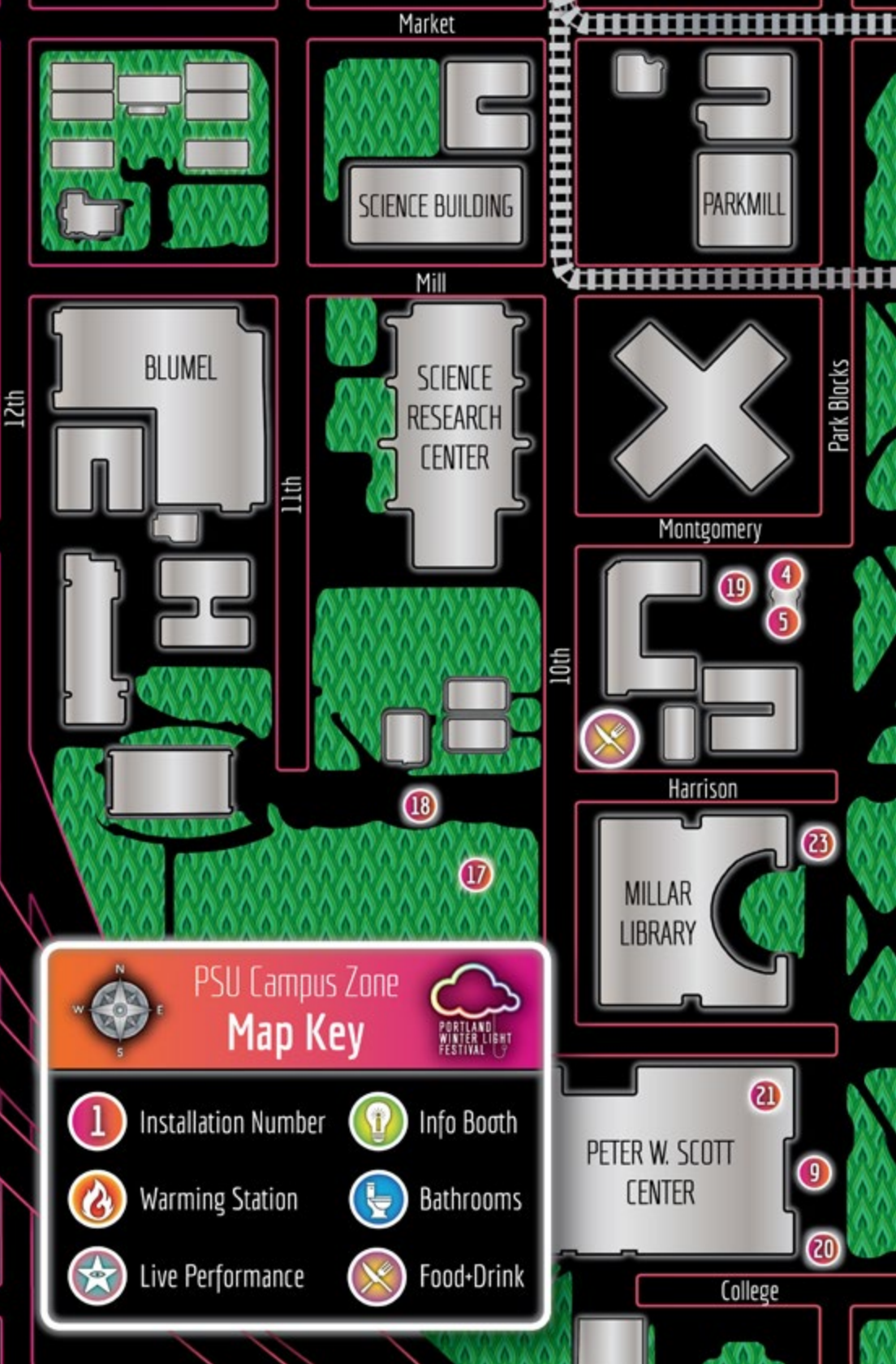


DUN9 B33TL3 JUGGLEMANIA JUGGLEMANIA.COM

Traveling in Egypt, JuggleMania enjoyed the prominence of scarab beetles in ancient motifs and stories. Seemingly insignificant, they were tasked with the indispensable job of rolling the sun across the heavens. Ironically, they move forward by going backward and value the lowest form of castoff material. To JuggleMania this was the perfect mascot for humorously promoting sustainable thinking. Thus was born "Dun9 B33TL3", a cyborg groundskeeper for the future, inspired by the past.

JuggleMania's Rhys Thomas has performed his "hilarity & dexterity" in 30 countries and creates for PDXWLF with his jeweler wife Maria Thomas and artist daughter Izzy Thomas.





Market

SCIENCE BUILDING

PARKMILL

Mill

BLUMEL

SCIENCE
RESEARCH
CENTER

Park Blocks

Montgomery

Harrison

MILLAR
LIBRARY

PETER W. SCOTT
CENTER

College



PSU Campus Zone Map Key



1

Installation Number



Info Booth



Warming Station



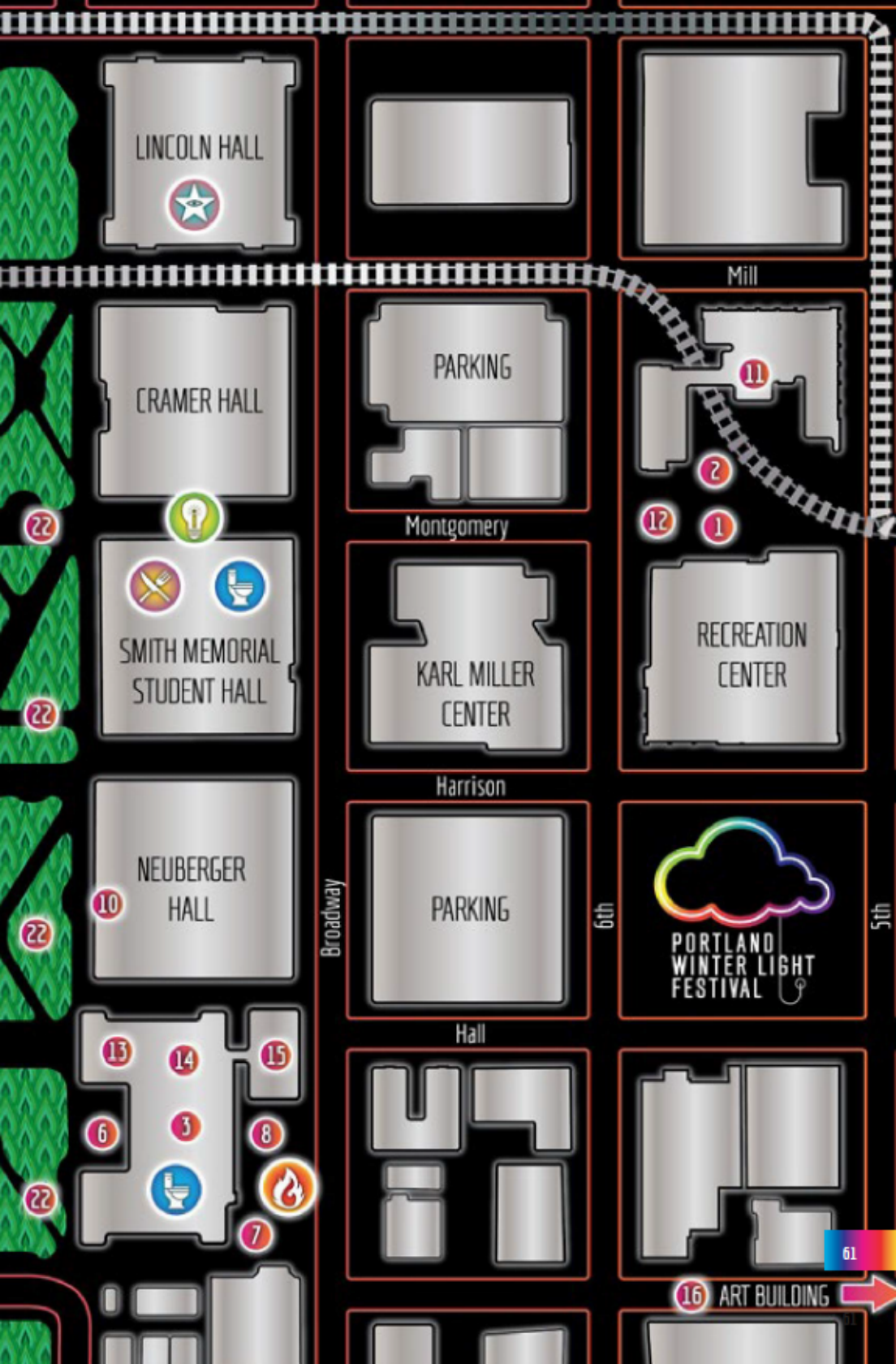
Bathrooms



Live Performance



Food+Drink



LINCOLN HALL



CRAMER HALL



SMITH MEMORIAL
STUDENT HALL



NEUBERGER
HALL

10

PARKING

Montgomery

KARL MILLER
CENTER

Harrison

PARKING

Hall

Mill

11

2

12

1

RECREATION
CENTER



6th

5th

13

14

15

6

3

8



7

16 ART BUILDING

61



Portland State
UNIVERSITY



Photo by Hasmoood

FRIDAY, FEB 8

PORTLAND STATE
UNIVERSITY IS A NEW
ADDITION TO PDXWLF 2019.
ALL EVENTS ON CAMPUS ARE
BROUGHT TO YOU BY PSU

THE LIGHT OF MUSIC LISA ANN MARSH

730PM
FRI

PORTLAND STATE UNIVERSITY
LINCOLN RECITAL HALL,
ROOM 75, IN THE BASEMENT.
1620 S.W. PARK AVE.

LISAANNMARSH.COM

The Light of Music is a multi-dimensional concert featuring ten performers and five artists coming together to celebrate the beauty of nature and human connections through lights and music. Poetry, photography, dance, artwork, and handmade instruments combine forces in this unique concert. Come and experience the night sky, illuminated dancing, and ice instruments through the music of Lisa Ann Marsh.

Lisa Ann Marsh writes music inspired by the natural and supernatural worlds, the complexity of human emotions, and the artists with whom she collaborates. Her passion is bringing artists together to create unique and exciting performances. The music has a message, often fueled by what is important today: the vanishing glaciers, human connections, the beauty of the night sky.



SATURDAY, FEB 9

OMBRA MUSICI: VIOLINIST TOMAS COTIK PLAYS BACH TOMAS COTIK

7PM
SAT

LINCOLN RECITAL HALL,
ROOM 75, IN THE BASEMENT.
1620 S.W. PARK AVE.

TOMASCOTIK.COM

In the frame of the Portland Winter Light Festival 2019, the facade of the PSU library will become a canvas for the projected silhouette of different PSU music professors. Concurrently, on February 9, at 7 pm, inside PSU's Lincoln Recital Hall, Dr. Tomas Cotik will present a solo violin recital presenting his latest project, a recording of Bach's Sonatas and Partitas for violin solo and selections of The Four Seasons by Antonio Vivaldi with Dr. Chuck Dillard.

Hailed by Michael Tilson Thomas as "an excellent violinist," Tomas Cotik was a first-prize winner at the National Broadcast Music Competition in his native Argentina in 1997. An avid recording artist, Dr. Cotik has recorded over 15 CDs, which have received over a hundred reviews and the highest praise from some of the best-known publications. Dr. Tomas Cotik was appointed Assistant Professor of Violin at Portland State University in 2016.





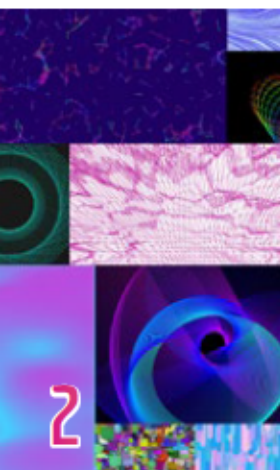
INTERACTIVE ILLUMINATED GEODESIC DOME LIGHT AT PLAY

LIGHTATPLAY.NET



The Radiance Dome is an iconic display of mesmerizing lighting, inviting participants to explore this experiment in interactive lighting and space design. Come closer to see the details of the fluidic dance of colors and the participants directing the show. Complete the experience from within, directly experiencing the interactive panorama of light and color while blurring the distinction of structure and environment, of artist and audience. Presented on a geodesic dome with transparent lighting panels and controlled by custom software.

Light at Play is a group of artists focused on the use of technology and science to break new artistic ground. We creatively explore new uses of technologies to expand our audience's perspective on the relationship between art and technology.



COMPILATION PSU CREATIVE CODERS

PSU.GD



This collaborative piece was created by students in a creative coding class in the Graphic Design program at Portland State University. Students used Processing to code animations that were then stitched together and projection mapped onto the environment.

The work in this project was created by Abdirahman Aden, Kai Alegre, Noelle Alhemli, Angela Bellant, Andrew Click, Valicia Kutichinski, Dana Leung, Kelsey Mason, Joshua Patton, Tiana Rasmussen, and Stephen Lee.



FINDING YOURSELF LOST IN THE DARK PORTLAND STATE UNIVERSITY, SCHOOL OF ARCHITECTURE, ARCH 280 DESIGN STUDIOS

PDX.EDU/ARCHITECTURE

"My image is the lamp lit in the middle of the night" (Octavio Paz).

The columns in this installation were each created by sophomore level architecture students to act as daytime orienting devices for the human body in finding its place in the world from the vantage point of the Shattuck Hall third floor roof terrace. For the festival they are gathered in the dark as steadfast placeholders in the disorientating shadow of night, animated by the ephemerality of artificial light, offering both the pleasures of momentary distraction alongside the revelatory potential of always finding oneself lost.

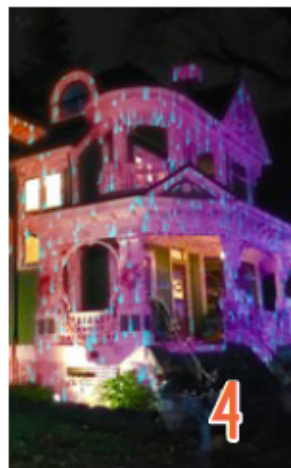
PSU School of Architecture sophomore design studio students are discovering the role that large artifacts play in the innovation and embodiment of communal meaning.

Re-imagining architecture in a site-specific installation. The Simon Benson House becomes a confluence where the architecture of the grand Queen Anne-style houses of the 1900s meets the 21st-century technology of projection mapping. In this form of expanded cinema, architecture is liberated from its stasis and viewers are encouraged to experience a new light of ornamental visual spectacle. In the appearance of the digital abstractions accenting the building, the projections conjure a phantasmagorical environment of illuminated surfaces, transforming the urban landscape. The abstraction of form and its ephemerality lives as a poetic perception of the edifice.

Check out our site to see what we mean.

EPHEMERAL ALLEGORY OF STRUCTURE HASMOOD

HASMOOD.COM
INSTAGRAM: @HASMOOD



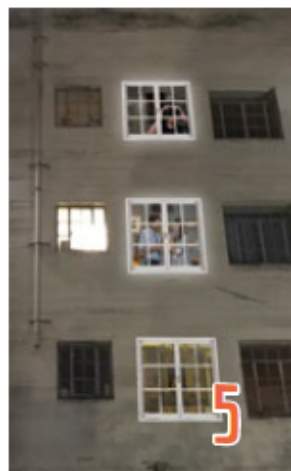
HASMOOD

In witnessing these projected portals of an animated reality, the viewer will question the connotative and contextual meaning. A window is a metaphor for seeing. Each window tells a story visible to the outside. Windows create an avenue of exploration and requires viewers to use their imagination to tell the rest of the story. These windows represent the shallow nature of modern perception. Sitting outside the window, viewership is only a narrow aspect of the experience; beyond the window, lives the passage to an assumed reality.

Check out our site to see what we mean.

INNUENDOS, IN YOUR WINDOWS HASMOOD

HASMOOD.COM
INSTAGRAM: @HASMOOD



HASMOOD

What do you get when you merge wild interactive projections with a century old building of higher learning? The next project by Lumenal Code.

Lumenal Code is the collaborative project of Dan Cohen and Gabe Shaughnessy. Since 2006 they have been creating multimedia installations and interactive art around the country. Their signature Augmented Reality Murals bring together the beauty and warmth of live analog painting with the spectacle of digital augmentation. Watch the reel to see what we mean. They encourage the audience to become participants in the creative experience, incorporating cutting edge interactive techniques in their installations. Their work emphasizes the nexus between Fine Art and Digital Interactivity to create a next-level experience that dazzles and inspires.

PIXEL PANIC LUMENAL CODE

AUGMENTEDART.COM





**FLAMING PAPER
AIRPLANE FIRE PITTS.**
JILL TORBERSON-
WELD METAL WORKS
JILLTORBERSON.COM



Here's your chance to not only see paper airplanes built out of steel, but have them warm you up by fire as well!

Hanging fire pits are a first for the festival. The idea is to create seemingly light and fragile works that not only convey a sense of nostalgia, but warms body and soul as well. All the paper airplane fire pits will be for sale after the show.

Jill Torberson is an artist, licensed contractor, and a certified welder. Weld Metal Works aims to bridge the gap between art and fabrication. These works are beautifully designed, structurally sound, and always designed with consideration to place. Sometimes the works can be seemingly fragile, though not so. Steel is the perfect material to realize this vision of lightness and strength. Steelwork does not need to be massive or heavy. The idea is to design and fabricate artwork that appears to float, is light in feel, yet able to create mass and volume in space.



SCRIM
JILL TORBERSON -
WELD METAL WORKS
JILLTORBERSON.COM



Scrim is a photo booth featuring photos of people striking poses behind a lighted scrim. Look for a stage with two Doric columns. The "audience" will photograph the "actor" as they reveal themselves in shadow. There will be props behind the scrim, and the "actors" will take on unique parts in this play. People can download these images from an Instagram account which was created for this installation to document and share these images.

Jill Torberson is an artist, licensed contractor, and a certified welder. Weld Metal Works bridges the gap between art and fabrication. These works are beautifully designed, structurally sound, and always designed with consideration to place. Sometimes the works can be seemingly fragile, though not so. The idea is to design and fabricate artwork that appears to float, is light in feel, yet able to create mass and volume in space.



HYPNOTRONS
AXIOM CUSTOM
PRODUCTS
AXIOMCUSTOM.COM



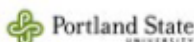
A series of moving light displays that create a hypnotic effect. The patterns emit a mesmerizing kaleidoscope of dynamic geometric images inspired by the Pacific Northwest's lifestyle and culture.

Axiom Custom Products is an American manufacturing and design company bringing a high-tech digital interface to traditional fabrication methodologies. Our capabilities include full wood production, metal fabrication, in-house design and engineering, digital and traditional sculpting, 3D printing, electronics, and more. We are a team of talented designers, craftsmen, artists, and engineers who work hard. We solve the problems that everyone else calls impossible, with an eye on the future, a hand on the sketchpad, and our heart in the shop.

The building remodel in progress will be illuminated from within to speak to the future relationship with the Park Blocks. In the daylight, the angled metal panels subtly reflect the trees of the Park Blocks throughout the seasons.

PARK REFLECTIONS PSU, FORTIS CONSTRUCTION, HACKER ARCHITECTS

[PDX.EDU/FLOORPLANS/
BUILDINGS/724-HARRISON](http://PDX.EDU/FLOORPLANS/BUILDINGS/724-HARRISON)
FORTISCONSTRUCTION.COM
HACKERARCHITECTS.COM



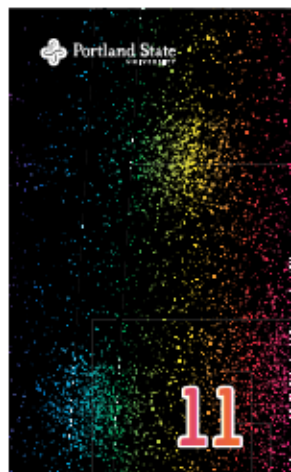
HACKER



First year students from the School of Art + Design present reimagined shadow shows of familiar fairytales and fables.

FAIRYTALES & FABLES THE SCHOOL OF ART AND DESIGN: CORE PROGRAM

PDX.EDU/ART-DESIGN/CORE



A+D

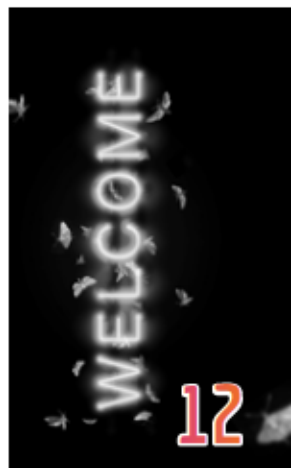
SCHOOL OF ART AND DESIGN

WELCOME is an installation and participatory experience that will serve as a beacon to actively welcome the public to PSU's campus during the 2019 Portland Winter Light Festival. Our group has reflected on what it means to feel welcome and you, our dear guests, are invited to participate in the collective power of light. Come on over and enjoy a moment of pause, get oriented, find what you need on your way to the rest of the Portland Winter Light Festival.

PSU's Friendtorship aims to increase access to design and arts learning for underserved high school students, empowering them to engage in experiential creative processes that better their communities. PSU Design and CPS high school students worked with Kelsey Snook, who shared her expertise in public participation and industrial design – based on creating great stories, designing experiences to tell those stories, with a careful plan for getting people to engage and participate.

WELCOME PSU ART + DESIGN'S FRIENDTORSHIP PROGRAM, STUDENTS FROM CENTENNIAL PARK SCHOOL AND THE ARTIST KELSEY SNOOK FRIENDTORSHIP.ORG

FRIENDTORSHIP





REFLECTIONS ON THE WORK OF MIKE KELLEY, "CITY 0000" HELEN GORDON CHILD DEVELOPMENT CENTER

*PDX.EDU/HELEN-GORDON-
CENTER*

The children, aged 6mo - 6yrs, at the Helen Gordon Child Development Center spent time at the Portland Art Museum studying and exploring Mike Kelley's City 0000. Noticing the children's fascination with these mediums, the teachers provided them with a space to explore construction and light in a similar environment. We invite you to come and create your own city landscapes.

The Helen Gordon Child Development Center is a play based, constructivist school at Portland State University. Children use multiple sources of media in order to communicate their stories.



RIVER SENTINELS PSU SCHOOL OF ARCHITECTURE

PDX.EDU/ARCHITECTURE/

River Sentinels is a collection of architectural models and graphics produced by students in Portland State University's School of Architecture in the Computational Design and Making course. The project imagines a series of illuminated architectural markers along the Willamette River. Twenty-one markers stretch from the confluence of the Columbia River up to Oregon City at each river mile. These markers stand watch day and night to provide guidance, measure, and orientation to inhabitants of the river.



DYNAMIC AURORA TOM BENNETT & "AURORA" DORA REDMAN

AURORADORA.COM

Seeing the beauty of the aurora can change your life! If you are patient and persistent then you can be rewarded with spectacular sky displays of the dynamic and colorful aurora. In North America, the aurora can be seen from late August through early May, with high occurrence in the Latitude Zone of 62 to 68 degrees North.

Tom is a former Aurora Borealis researcher and Dora is an Aurora Photographer based in Talkeetna, Alaska.



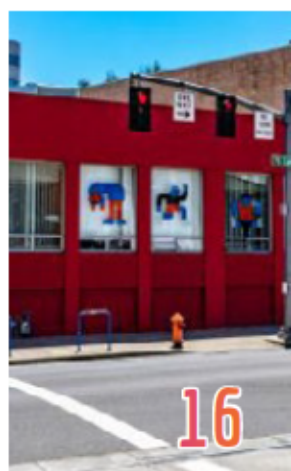
Students in ART 399: Video Installation will transform the art building, illuminating the art building lobby gallery with their projections visible from blocks away.

The students in ART 399: Video Installation are inventive and expressive urban interventionists.

ART STUDENT VIDEO PROJECTIONS SCHOOL OF ART + DESIGN VIDEO INSTALLATION CLASS

PDX.EDU/ART-DESIGN

A+D
SCHOOL OF ART AND DESIGN



Light up the night with Campus Rec in this interactive installation where visitors of all ages can play, laugh, and experience the fun of playing games in the dark. Peter W. Stott Community Field will be glowing with fun games and activities for all abilities, including cornhole, lawn darts, foam archery, soccer, giant trashcan pong, jump ropes, frisbees, and more.

Portland State Campus Rec provides an inclusive environment where recreation and wellness opportunities inspire, empower and educate people to be positive contributors to the global community. Campus Rec provides a wide variety of programming, including intramural sports, fitness classes, outdoor adventure, clubs, and aquatic activities.

LIGHT UP RECREATION PSU CAMPUS REC

PDX.EDU/RECREATION

[PDX.EDU/RECREATION/](http://PDX.EDU/RECREATION/EVENTS/PDXWLF)
EVENTS/PDXWLF

CAMPUS**REC**



In the event of disaster, where will light lead us? At once beacon and resource, we illuminate the Walk of Heroines to discover those critical community resources to be made available both pre-and-post disaster, placing one moment of light in a larger network of community resilience.

Portland State University's campus will receive a PREPHub in the summer of 2019, the inaugural model of a neighborhood infrastructure for disaster preparedness. The hubs, which were developed in MIT's Urban Risk Lab, activate neighborhood spaces with ongoing useful functions for everyday life and become community focal points for critical needs in case of an emergency. They operate entirely off-grid during a disaster, providing resources such as power, communication, and emergency first aid supplies.

LIGHTHUB
PORTLAND STATE
UNIVERSITY'S SCHOOL
OF ARCHITECTURE,
THE CENTER FOR
PUBLIC INTEREST
DESIGN, THE CITY OF
PORTLAND, PORTLAND
GENERAL ELECTRIC,
MASSACHUSETTS
INSTITUTE OF
TECHNOLOGY
PREPHUB.ORG

 Center for
Public Interest
Design





AUREOLE PATHLIGHTERS

Over the years, the pathlighters have collected, cut, shaped and sewn over 300 milk jugs and plastic bags to create the star lanterns that light your path tonight. Each lantern is created by sewing pieces of discarded milk jugs, together with plarn (plastic bags). The unused remnants from the lanterns have been sewn together to create a new piece for the winter lights festival, the aureole: halo of light.

Pathlighters is a group that has slowly grown from just two to many. We believe in creating calm steady light to guide you on your path. The use of discarded materials is to highlight that given care, time and community anything can be made beautiful.

19



THE PICKATHON TREELINE STAGE PSU SCHOOL OF ARCHITECTURE

PDX.EDU/ARCHITECTURE/

An abstract forest created by PSU Architecture students for the local Pickathon music festival. Created in the diversion- design- build tradition. It is illuminated by lighting designer Dan Meeker.

20



REFLECTIVE CURTAIN SCOTT CENTER CONSTRUCTION TEAM

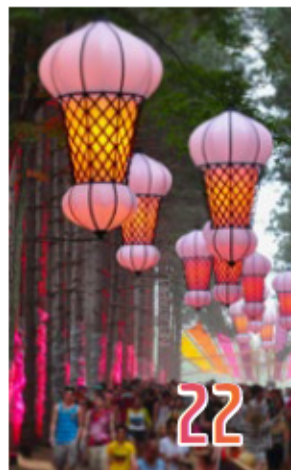
The design and construction team for the Scott Center combined their talents to create a shimmering wall of light.

21

Inflatabill is an artist and designer based in the San Francisco bay area. He comes from a background in the skydiving industry making parachutes, he uses these skills to make inflatable art. His biggest thrill happens in the installation process. Whether it's a nightclub, convention center, aircraft hangar, or forest, every venue is different and presents its own unique set of challenges. He specializes in transforming ordinary spaces into exotic wonderlands. His lanterns will be hung throughout the PSU campus park blocks.

INFLATABILL LANTERNS INFLATABILL

INFLATABILL.COM
INSTAGRAM: @INFLATABILL



Ombra Musici, (English translation: Musician's Shadow), is an interdisciplinary work of "massive media." In the frame of the Portland Winter Light Festival 2019, on February 7th, 8th, 9th from 6 pm to 10 pm, the facade of the PSU library will become a canvas for the projected silhouette of different PSU music professors. Spectators passing by and congregating in front of the building will hear the music through loudspeakers and see the moving silhouette projected on the full height of the building.

Ombra Musici will feature the solo performances of several faculty members of the Portland State University School of Music: Tomas Cotik (violin), Barbara Heilmair (clarinet), Susan Chan (piano), and Joel Bluestone (timpani). The silhouettes of these solo performers will be amplified to building size, bringing the normally static wall of the library to life. Through this public exhibition the Ombra Musici embodies the spirit of Portland State University's motto "Let knowledge serve the city."

OMBRA MUSICI

AUTHORS: DR. TOMAS
COTIK AND DR. DAVE
COLANGELO

PRODUCTION AND FILM: HASAN
MAHMOOD, BODE SMITH
AND TOMAS COTIK

MUSICIANS: TOMAS COTIK
(VIOLIN), BARBARA
HEILMAIR (CLARINET),
SUSAN CHAN (PIANO) JOEL
BLUESTONE (TIMPANI)

TOMASCOTIK.COM





PDXWLF KICKOFF PARTY
TEOTE MEZCALERIA

9PM-1AM
THU

2700 NE ALBERTA ST



Teote will host a kickoff party for the Portland Winter Light Festival on Thursday, February 7th. We invite you to come celebrate the richness of art in our city with a special night of music and dancing. Special cocktails and food exclusive to this event will be available.

Celebrate the Soul of Mezcal Our Mezcalería is a dark, delicious setting of fine art & architecture, with smooth tequilas and smoky mezcals to whet your palate. For a perfect night out, grab a seat at our expansive bar, or take your spirits outside and catch up with a friend at one of our fire pits. Grilled meats, hearty arepas and plantains are some of our favored fare. Teote features architectural art by local artists: Lucas Schwartz, Richard Cawley and Gustav Sculptor.



History comes back to life with these magical site-specific projection mapping installations, using light to put a fresh layer of paint on ghost signs. Three new locations, one each night, Feb 7, 8, 9 from 6-9pm.

Visit www.lightcapsules.com for more information.

LIGHT CAPSULES
CRAIG WINSLOW

LIGHTCAPSULES.COM



CRAIG
WINSLOW
STUDIO

LIGHT CAPSULES NO.032
SAMMOY & CO.

801 N RUSSELL ST
CORNER OF N RUSSELL ST
& N ALBINA AVE

THU

LIGHT CAPSULES NO.033
SAY IT WITH FLOWERS

625 SE SALMON ST
PARKING LOT AT SE SALMON ST
& SE 6TH AVE

FRI

LIGHT CAPSULES NO.034
FORD / STORAGE

2230 SE MORRISON ST

SAT

Artifact is a video and sound representation of the experience of light and time at Summer Lake, Oregon. The components were collected during a residency at PLAYA. The process of choosing what to record became a conversation with the surrounding geography, and the unique quality of color, light, and time that happens in this worn volcanic landscape. Our 'moment' of collection is where the creation of an artifact begins. The artifact then continues to morph through human interventions (video and sound editing). The sense of time and place is then completed through the viewer.

Studio M13 (Stephen Miller and Lisa DeGrace) creates installation and performance work, utilizing the building blocks of light, geometry, sound and elemental nature to reflect human narrative and mood. See studiom13.com for more. Stephen is Art Director at Skylab Architecture, who has commissioned this work for the Portland Winter Light Festival.



ARTIFACT: LIGHT

STUDIO M13:

STEPHEN MILLER AND LISA DEGRACE

530 - 9PM

SKYLAB ARCHITECTURE

413 SW 13TH AVE #200,

STUDIOM13.COM

SKYLABARCHITECTURE.COM

skylab

Anne F. Crumpacker leans to the light and elevates interiors with crosscut bamboo luminaries. A selection of these illuminating sculptures are on exhibit at The Joinery's downtown showroom through May 12th, 2019.

Each piece Anne creates is a microcosm and metaphor for life, the interconnection of all things. She strives to expose the inner beauty of bamboo and share her innermost thoughts with audiences. Patterns and rhythms emerge, revealing the interconnection of forces within nature, from microscopic life to wave movement. Interconnectedness is the source, the revelation, and the energy she seeks to express in all of her work.

Japanese aesthetics deeply influence this artist. She reflects on minimal design, the simplicity and clarity of expression, the close connection to nature through the bamboo, and the serenity and tranquility she experiences when working with her hands. It is her meditation and she is in the flow. This has become the core of her practice she simply cannot do without.



ENSÔ - A SENSE OF AWARENESS

ANNE F. CRUMPACKER, BAMBOO ART

CRUMPACKERBAMBOOART.COM

 THE JOINERY



On any given sunny day at Blue Sky Gallery, there is a magic moment when the light travels through old warped glass windows and creates a beautiful moving shadow and light dance. Of course in February, there isn't much light. This video installation pays homage to the sunny days and the beautiful dance of light on our walls, recreating the late afternoon of August, and adding an element of sound. Come watch (and listen to) the light pass by!

This PDXWLF project is created by three intrepid photography lovers and non-profit arts administrators, who also create and support the arts outside of their work at Blue Sky Gallery. Amanda is a host for Art Focus on KBOO, Zemie is co-director of Wolff Gallery, and Lisa is a composer for installation and dance performances.

MAGIC HOUR LIGHT SHOW

BLUE SKY GALLERY STAFF: ZEMIE BARR
(PHOTO/VIDEO/TEXT), AMANDA B. CLEM
(PHOTO/VIDEO), LISA DEGRACE (SOUND)

THURSDAY NOON - 9PM,

FRIDAY AND SATURDAY NOON - 5PM

BLUE SKY GALLERY, 122 NW 8TH AVE

BLUESKYGALLERY.ORG

INSTAGRAM: @BLUESKYGALLERYPDX



NIGHT LIGHT AT FIRST THURSDAY

MEGAN MCKISSACK, NIGHT LIGHTS
REGIONAL ARTS & CULTURE COUNCIL

530PM

411 NW PARK AVE

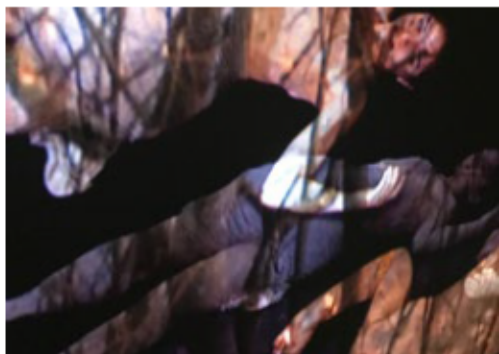
PHOSPHORS.TUMBLR.COM

After hearing of the current Presidential Administration's deletion of climate data and the ongoing effort of preserving that data by the Data Refuge community, McKissack has been researching mapping and generating visualizations of Oregon LIDAR point cloud data from the Oregon Department of Geology and Mineral Industries and the National Oceanic and Atmospheric Administration. This data helps scientists' understanding of geographical hazards and model agricultural behaviors. Projecting these visualizations as video loops accompanied by ambient and atmospheric soundscapes, McKissack creates an environment that responds directly to the architecture of the General Automotive Building.

Megan McKissack is a Portland, OR based, new media artist working in the realm of live visuals, video installation, and creative coding

Visible from the street and sidewalk, Fernanda D'Agostino's video projection "Borderline" at Elizabeth Leach Gallery includes evolving and overlapping imagery relating to climate change, ecosystem shift, human migration and movement, and individual human experience. The video projection at Elizabeth Leach Gallery coincides with D'Agostino's video installation of the same title, which is part of the exhibition "the map is not the territory" on view at the Portland Art Museum February 9 - May 5, 2019.

Since 1984 Fernanda D'Agostino has completed twenty-five public commissions and fifteen solo exhibitions, many incorporating moving images and video. She has exhibited her work nationally and internationally including venues in Santa Fe, San Francisco, Seattle, Portland, Hong Kong, Paris, St. Petersburg, Havana, Berlin, London, Mumbai, Sao Paulo, and others. Her work has been recognized by a Bonnie Bronson Fellowship, Ford Family Foundation, Flintridge Foundation, the National Endowment for the Arts, and The Andy Warhol Foundation.



BORDERLINE
FERNANDA D'AGOSTINO
ELIZABETH LEACH GALLERY

200 PM - MIDNIGHT
FEBRUARY 7- MARCH 2

417 NW 9TH AVENUE
ELIZABETHLEACH.COM

Oregon Jewish Museum and Center for Holocaust Education is pleased to share an installation that features photographs from the museum archives, 1850 to the present, that illuminate the Jewish experience in Oregon. The slide show will be projected on to OJMCH's large windows on NW 8th Street at Davis across from the North Park Blocks every evening of the festival. Visitors on First Thursday can also access our current exhibitions The Last Journey of the Jews of Lodz and The Power of Protest: The Movement to Free Soviet Jews, along with our core exhibitions.

The Oregon Jewish Museum and Center for Holocaust Education explores the Jewish experience in Oregon and teaches the universal lessons of the Holocaust through exhibitions, educational resources and opportunities for intercultural conversation. OJMCH challenges visitors to resist indifference and discrimination and to envision a just and inclusive world.



LARGE SCALE SLIDE SHOW
OREGON JEWISH MUSEUM AND CENTER
FOR HOLOCAUST EDUCATION

7-11PM
THU-SAT

724 NW DAVIS STREET
OJMCH.ORG

OREGON
JEWISH MUSEUM
AND CENTER FOR
HOLOCAUST EDUCATION



REFLECTING ON LOVE GREEN ANCHORS PDX

6-10 PM FEB 7-9TH

8940 N BRADFORD ST

GREENANCHORSPDX.COM

INSTAGRAM: @REFLECTINGONLOVE



ALAN PAGE ORI GALLERY

GALLERY HOURS SUN-THURS 12-6PM

1004 N MASON ST.

ORIARTGALLERY.COM

ORI
GALLERY

Artist Roman Sorensen created this lit text installation in response to our great need to counter hate with love. As we face new challenges, love will be the answer to our most difficult questions. Positioned on the Green Anchors pier, downstream of the St. Johns Bridge, this piece stands 23 feet tall and 37 feet wide and reflects LOVE onto the Willamette River below.

Artists Ivan McLean, Scott Sutton and Rory Leonard will light up our venue with artistic fire displays, a colorful bee apiary, and metal art. Live music performances to be announced.

Wondering where Trogdor, the fire-breathing dragon, will be this winter? HINT: he hangs out near a WWII army tugboat named Captain BOB.

Green Anchors is a center for community engagement through art, business, and ecology. Situated on a historical shipbuilding site along the Willamette River, our 7 acre property is a model for brownfield remediation through ecological restoration. We are a local business incubator, collaborative arts center, educational forum, and site for eco-innovation.

Alan Page (a.k.a. [sic][redacted]) is a Portland-based glitch and new media artist. Through mixed physical media, intentional software misuse, and — more-than-occasionally — chance, they create decontextualized visual disturbances that aim to exploit the spine-itching discomfort that comes from unexpected results. Influenced by (and a lover of) the old, broken, probably ruined, and can't-be-bothered-to-fix, Page creates layered, sometimes dissonant media that are simultaneously pure experimentations and an odd cipher to visually narrate their process of digesting their surroundings.

Ori Gallery is the brain child of the creative duo Maya Vivas & Leila Haile. Together they seek to reclaim and redefine "the white cube" through amplifying the voices of Trans and Queer Artists of color, community organizing, and mobilization through the arts.

Modern Velocity Presents: A Conspiracy of Light.

Designer Daniel DeBenedetti and a team of co-conspirators will transform the courtyard of Cathedral Park Place into a garden of projection and light-based curiosities to delight the eyes and spark the imagination. A Conspiracy of Light is a collaboration with some of the Northwest's biggest, brightest and best. Built entirely from loaned and donated materials with all volunteer support, A Conspiracy of Light promises to be a crowd pleaser.

Modern Velocity LLC is a Northwest-based creative production agency with a penchant for unusual and offbeat projects. It was founded by lead creative Daniel DeBenedetti, a long time resident of Portland's St Johns neighborhood, who is pleased to contribute to a creative effort right in his own backyard.



A CONSPIRACY OF LIGHT DANIEL B. DEBENEDETTI MODERN VELOCITY LLC

6-10PM

6635 N BALTIMORE STREET
MODERNVELOCITY.COM



Falling through the portal of time into a crystal chamber of ice where prismatic refractions of light dance endlessly through a dark labyrinth of the mind. Here a moment rests eternal, to move forward and shatter the spell binding our future frozen in time.

Ghost Stag Productions is a scenic design studio specializing in custom themed environments, pop up lounges, bars, photo booths and thematic stage backdrops. Founded by Portland couple Narayani Matson and Michael Miller, they bring a combined experience of design, fabrication, art curation and creative ingenuity together to create unique scenes that tell a memorable story.

In affiliation with The Portland Winter Light Festival, Ghost Stag is proud to present a month long lighting display of whimsy, thematically inspired by the festival's 2019 theme moving forward.

Photograph by Nicholas Clint



FROZEN IN TIME GHOST STAG PRODUCTIONS

JANUARY 7TH - FEBRUARY 11TH

SUNLAN LIGHTING INC.
3901 N MISSISSIPPI AVE

GHOSTSTAG.COM
INSTAGRAM: @GHOSTSTAG
#GHOSTSTAG



LIVE EVENTS

THURSDAY, FEB 7

WEST RIVERFRONT ZONE

Glow Jam 7PM
Stories Around the Fire 630, 730, 830PM
Sleepless Like Light 7PM
HEIDI DUCKLER DANCE/NORTHWEST
Cymatic Chambers 6, 8PM
CLASSICAL REVOLUTION PDX
& CONSILIENT MULTIMEDIA
Dioscuri - Sophia - The Golden Age 7, 9PM
ROWAN FRANCIS & THE BILLYGOAT
Vaudeville Vision Quest 630, 830PM
CIRCUS LUMINESCENCE
Silent Disco 7-11PM
FUN LUV'N

EASTSIDE ZONE

PDXWLF Kickoff Party 9PM
TEOTE MEZCALERIA
Stories Around the Fire 6, 7, 8, 9PM
LIGHT SCIENCE TALKS
Light as a Biological Force 6PM
OLYSSA STARRY
Chromata: When Algorithms Meet Art 730PM
BRYAN RESSLER
Programmable Lighting:
The Transformation of
Sculpture and Architecture 9PM
EICHINGER SCULPTURE STUDIO
AND KOBLE CREATIVE

FRIDAY, FEB 8

WEST RIVERFRONT ZONE

Stories Around the Fire 630, 730, 830PM
Fire Performance 6, 8PM
FLAMEBUOYANT PRODUCTIONS
Sleepless Like Light 7PM
HEIDI DUCKLER DANCE/NORTHWEST
Cymatic Chambers 6, 8PM
CLASSICAL REVOLUTION PDX
& CONSILIENT MULTIMEDIA
Dioscuri - Sophia - The Golden Age 7, 9PM
ROWAN FRANCIS & THE BILLYGOAT
Vaudeville Vision Quest 630, 830PM
CIRCUS LUMINESCENCE
Silent Disco 630-11PM
FUN LUV'N

EASTSIDE ZONE

Illuminated Bike Parade 7PM
Stories Around the Fire 6, 7, 8, 9PM
LIGHT SCIENCE TALKS
The Hidden Crystal Structure
of Rocks Revealed by Light 6PM
TAMI CLARK
The Software Behind Art:
An Imaginative Exploration! 730PM
LILLI SZAFRANSKI
Ice and Lights 9PM
JAMES STUGART & ERIK WALTHINSEN

PORTLAND STATE UNIVERSITY

The Light of Music 730PM
LISA ANN MARSH

SATURDAY, FEB 9

WEST RIVERFRONT ZONE

Stories Around the Fire 630, 730, 830PM
Fire Performance 6, 8PM
FLAMEBUOYANT PRODUCTIONS
Sleepless Like Light 7PM
HEIDI DUCKLER DANCE/NORTHWEST
Cymatic Chambers 6, 8PM
CLASSICAL REVOLUTION PDX
& CONSILIENT MULTIMEDIA
Dioscuri - Sophia - The Golden Age 7, 9PM
ROWAN FRANCIS & THE BILLYGOAT
Vaudeville Vision Quest 630, 830PM
CIRCUS LUMINESCENCE
Silent Disco 630-11PM
FUN LUV'N

EASTSIDE ZONE

Lantern Parade 6PM
Stories Around the Fire 6, 7, 8, 9PM
LIGHT SCIENCE TALKS
Aurora Borealis Imagery from Alaska 6PM
"AURORA" DORA REDMAN & TOM BENNETT
Multimedia Art and
Installation Techniques 730PM
JESSEY ZEPEDA
Hearing HAL
Through the Looking Glass 9PM
RICH BURTON/HOOPERFLY

PORTLAND STATE UNIVERSITY

Ombra Music:
Violinist Tomas Cotik Plays Bach 7PM
TOMAS COTIK



@pdxwlf #pdxlightfest
pdxwlf.com

