

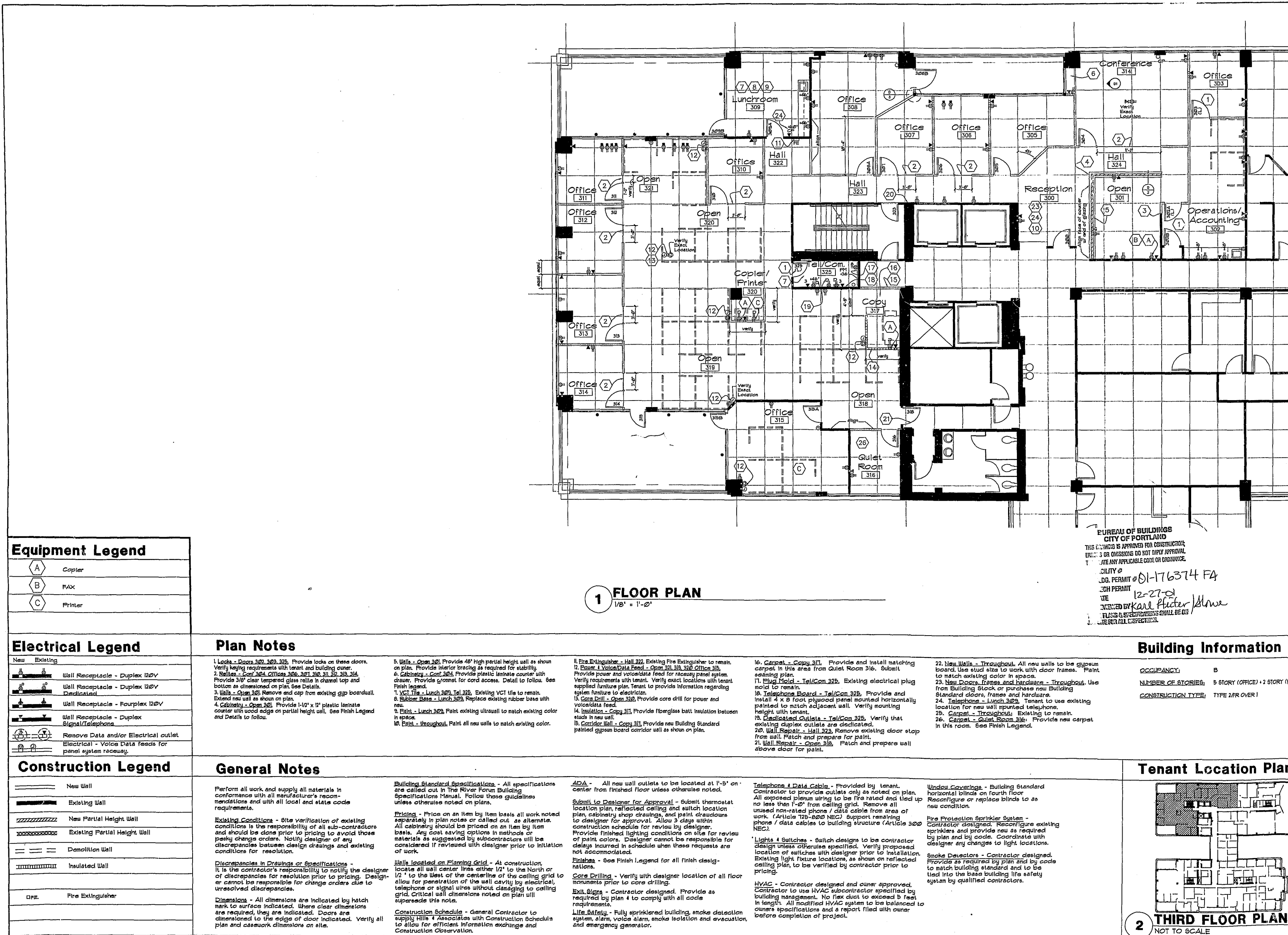
4380 SW MACADAM 3RD FLR FA01-176374

FEB 25 2002
MICROFILMED

15

FEB 25 2002
MICROFILMED

V

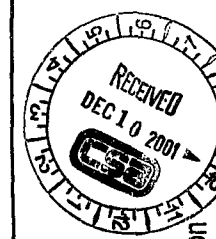


HILLS
DESIGN
GROUP

812 SW Washington Suite 1200
Portland, Oregon 97205
503.435.0805 fax 503.222.1070



15



W. R. REED
RIVER FORUM I
4380 SW Macadam Avenue Portland, Oregon

3
FLOOR

DATE: 12/27/01
PROJECT: 2.193A.1.120701
DWG: R.S.F.
U.S.F.: R.S.F.
DRAWN BY:
CHECKED BY:
REVISIONS:

CONSTRUCTION DRAWING
FLOOR PLAN

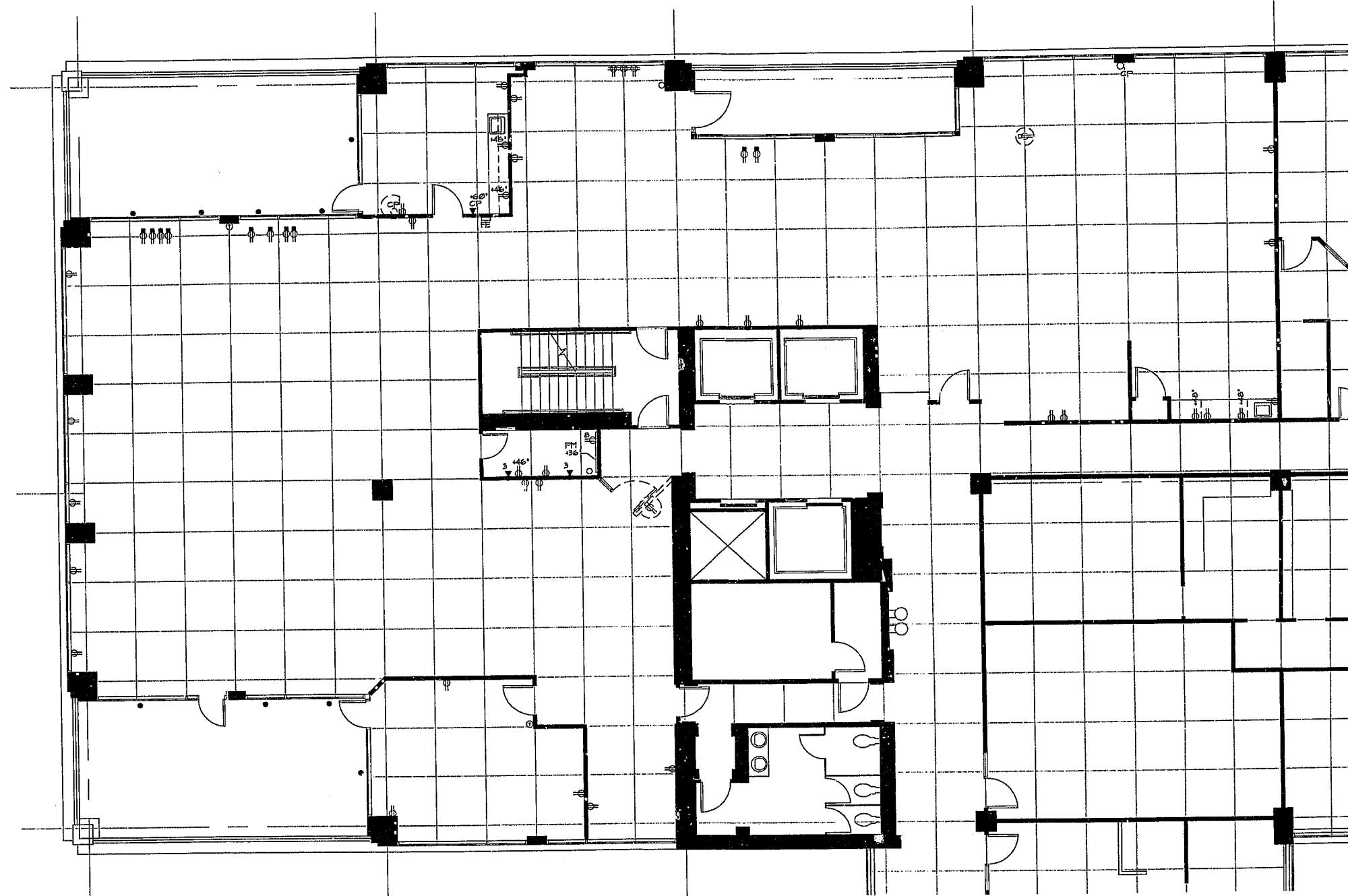
A1
1452

FEB 25 2002
MICROFILMED

FEB 25 2002
MICROFILMED

15

V



1 DEMO PLAN
1/8" = 1'-0"

Electrical Legend	
New	Existing
	Wall Receptacle - Duplex 120V
	Wall Receptacle - Duplex 120V Deactivated
	Wall Receptacle - Fourplex 120V
	Wall Receptacle - Duplex Signal/Telephone
	Remove Data and/or Electrical outlet
	Wall Receptacle with blank coverplate

Construction Legend	
	New Wall
	Existing Wall
	New Partial Height Wall
	Existing Partial Height Wall
	Demolition Wall
	Insulated Wall
	Fire Extinguisher

Demo Notes

HILLS DESIGN GROUP

812 SW Washington Suite 1200
Portland, Oregon 97205
503.223.0805 fax 503.223.1070



W. R. REED
RIVER FORUM I
4380 SW Macadam Avenue Portland, Oregon

3
FLOOR

DATE: 12/7/01
PROJECT:
DWG: 2.193.A1.120701
U.S.F.: R.S.F.:
DRAWN BY: KSM
CHECKED BY: SJ/PH
REVISIONS:

CONSTRUCTION DRAWING
DEMO PLAN

A2

FEB 25 2002
MICROFILMED

FEB 25 2002
MICROFILMED

HILLS DESIGN GROUP

812 SW Washington Suite 1250
Portland Oregon 97205
503.223.0005 fax 503.223.1070



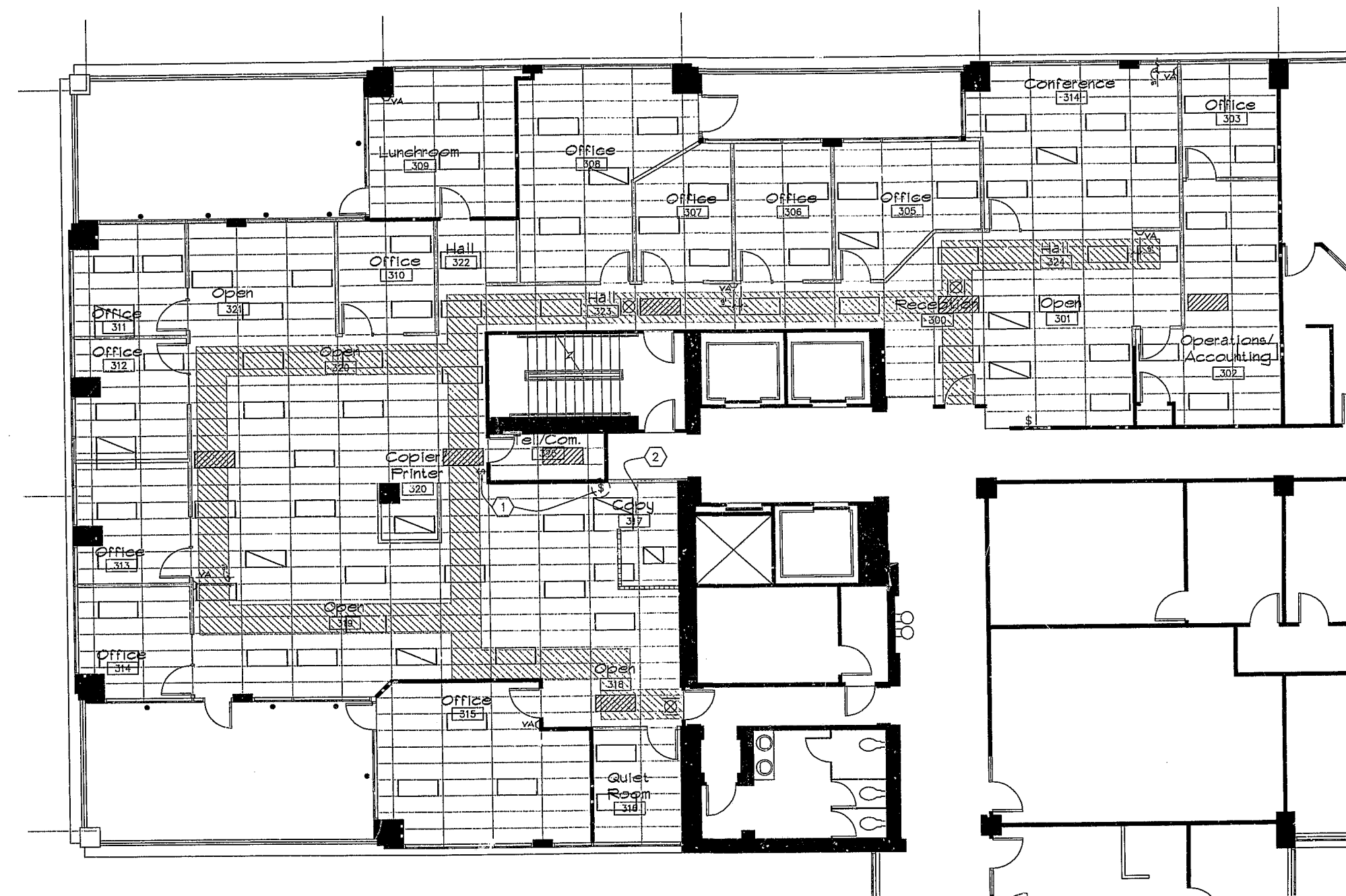
W. R. REED
RIVER FORUM I
4380 SW Macadam Avenue Portland, Oregon

3
FLOOR

DATE: 12/7/01
PROJECT:
DWG: 2.193.A1.120701
U.S.F.: R.S.F.:
DRAWN BY: KSM
CHECKED BY: SJ/PH
REVISIONS:

CONSTRUCTION DRAWING
REFLECTED CEILING PLAN

A 3



1 REFLECTED CEILING PLAN
1/8" = 1'-0"

Construction Legend

—	New Wall
—	Existing Wall
—	New Partial Height Wall
—	Existing Partial Height Wall
—	Demolition Wall
—	Insulated Wall
—	Fire Extinguisher
—	Visual Alarm
—	Exit Sign

Ceiling Legend

—	Existing Building Standard Fluorescent Light Fixture to Remain
—	New Building Standard Fluorescent Light Fixture
—	Remove Existing Bldg. Std. Fluorescent Light Fixture - to be relocated in new location
—	Emergency Fluorescent Light Fixture Circuit
—	Emergency Path of Egress
—	New Building Standard 26 watt fluorescent recessed wall washer 5" or 6" diameter, 3000K Color Temp

Ceiling Notes

1. Bulb - Open 314: Relocate existing switch to this new location.
2. Ceiling - Copy 311: Patch and replace ceiling tile and grid in this area as required to match existing adjacent.

Emergency Lighting

Emergency lighting has been indicated on the tenant reflected ceiling plan and the tenant location plan showing the public corridor egress path. Hills Design Group has shown individual light fixtures which should at a minimum be included to provide adequate emergency egress illumination. It is the contractor's responsibility to perform the necessary calculations and add additional emergency lighting if necessary to satisfy minimum standards for emergency exit illumination as required by either the state structural specialty code or NFPA 101. It is also the contractor's responsibility to determine which existing light fixtures are on the emergency lighting circuit. This requirement is for both the tenant space and the public corridor egress path. Costs for the public corridor illumination should be charged separately to the building and not be included in the tenant improvement costs.

FA.01.176374

V

FEB 25 2002
MICROFILMED

15

W.R. Reed

River Forum I
3rd Floor
4380 SW Macadam Ave
Portland, Oregon

SPECIFICATIONS MANUAL

December 7, 2001

**H I L L S
D E S I G N
G R O U P**

812 SW Washington Suite 1250
Portland, Oregon 97205
503.223-0605 Fax:503.223.1070

FINISH LEGEND

FINISH LEGEND**WR Reed**

The River Forum

December 7, 2001

Code	Product Type	Specification	Location & Remarks
C-1	Carpet	Mfg: Lotus Style: Civic Color: L25, Thistle 30 oz cut pile carpet	Existing carpet throughout to remain New carpet to match in Quiet Room 316
P-1	Paint	Match to existing paint color	Submit drawdowns for approval
RB - 1	Rubber Base	Match to existing in space	4" flat at carpet 4" cove at VCT Submit sample for approval
PL-1	Plastic Laminate	To Follow	Counter in Conf 314.
PL-2	Plastic Laminate	To Follow	Counter in Reception 300

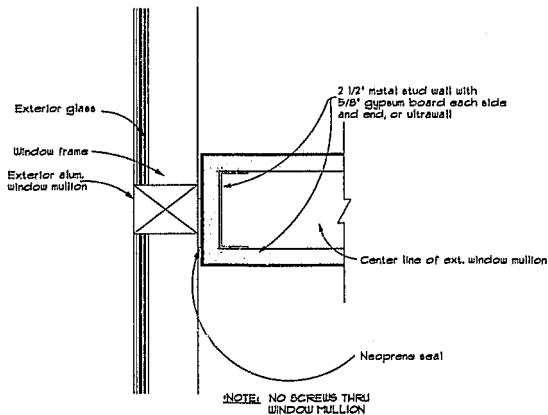
NOTE: Contractor to provide samples of ALL FINISHES LISTED ABOVE for designer approval. Provide samples prior to purchasing materials to avoid any delay to project completion date. Finish Legend is not final until samples are submitted by and returned to Contractor with approval.

DETAILS

HILLS DESIGN GROUP

812 SW Washington Suite 1250
Portland Oregon 97205
503.223.0605 fax 503.223.1070

PROJECT



1

WALL CLOSURE AT MULLION - PLAN

3" = 1'-0"

WR REED

DATE: 12/02/01

SCALE: 3"=1'-0"

DRAWING: WALL-MLT

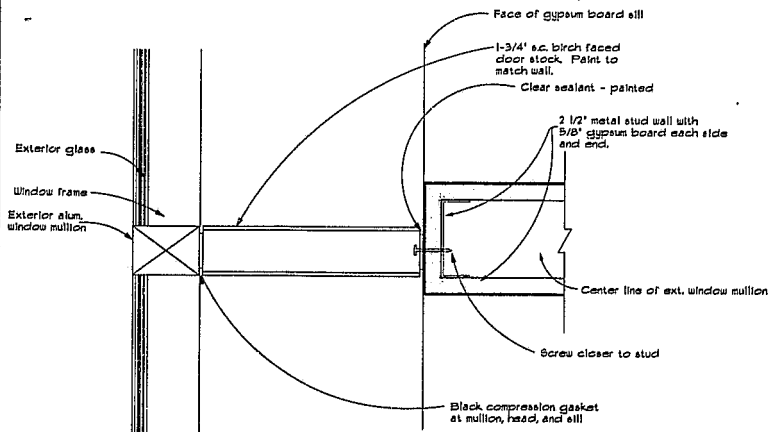
DETAIL

D4

HILLS DESIGN GROUP

812 SW Washington Suite 1250
Portland Oregon 97205
503.223.6605 fax 503.223.1070

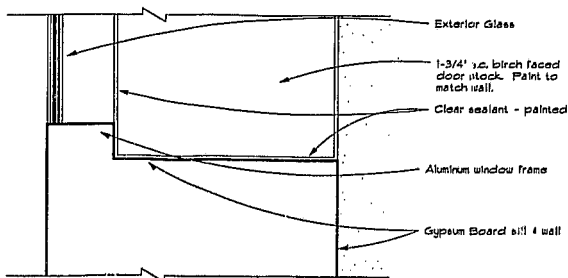
PROJECT



1

WALL CLOSURE AT MULLION - PLAN

3" = 1'-0"



WR REED

DATE: 12/8/01

SCALE: 3"=1'-0"

DRAWING: WALL-MUL2

DETAIL

D5

2

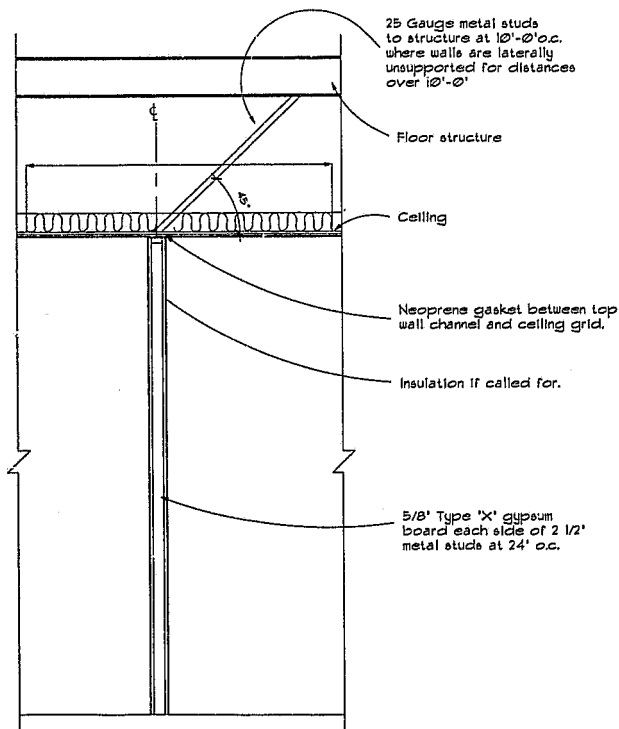
WALL CLOSURE AT MULLION - SECTION

3" = 1'-0"

HILLS DESIGN GROUP

812 SW Washington Suite 1250
Portland Oregon 97205
503.223.0905 fax 503.223.1070

PROJECT



1

TYPICAL WALL CONSTRUCTION

1/2" - 1'-0"

WR REED

DATE: 12/07/01
SCALE: 1/2"=1'-0"
DRAWING: TYP-WALL1

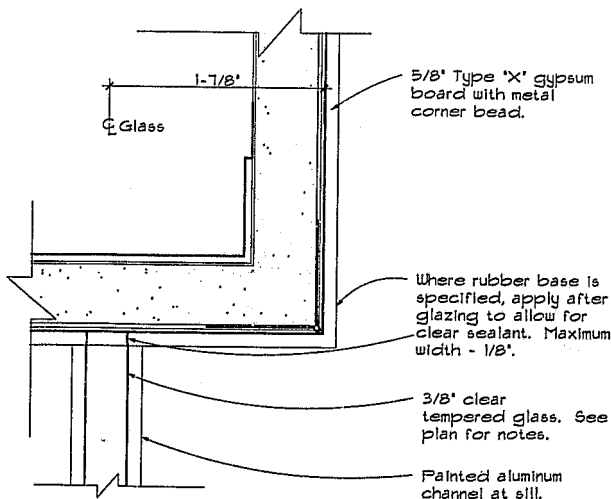
DETAIL

D6

HILLS DESIGN GROUP

812 SW Washington Suite 1250
Portland Oregon 97205
503.223.0605 fax 503.223.1070

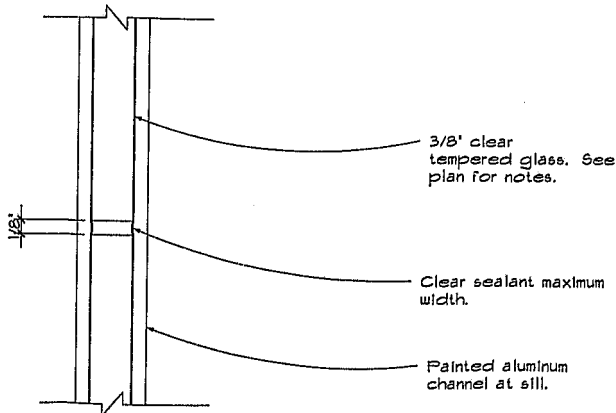
PROJECT



1

RELITE JAMB TO PERP. WALL

FULL SCALE



2

BUTT JOINT AT RELITE

FULL SCALE

WR REED

DATE: 12/02/01
SCALE: 1/2"=1'-0"
DRAWING: RLT-PLAN

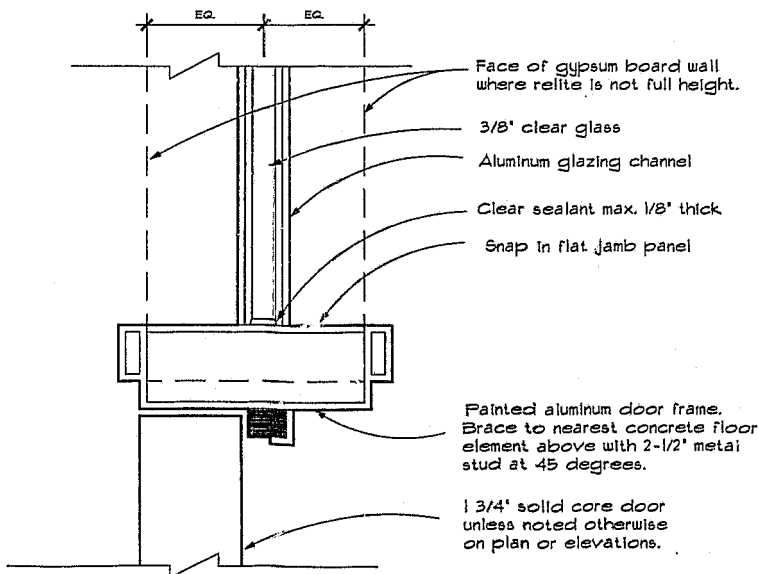
DETAIL

D7

HILLS DESIGN GROUP

812 SW Washington Suite 1250
Portland Oregon 97205
503.223.0605 Fax 503.223.1070

PROJECT



WR REED

1

DOOR JAMB TO RELITE

1/2 FULL SCALE

DATE: 12/07/01
SCALE: 8"=1'-0"

DRAWING: JAMB-RLT

DETAIL

D8

**HILLS
DESIGN
GROUP**

812 SW Washington Suite 1250
Portland Oregon 97205
503.223.0905 fax 503.223.1070

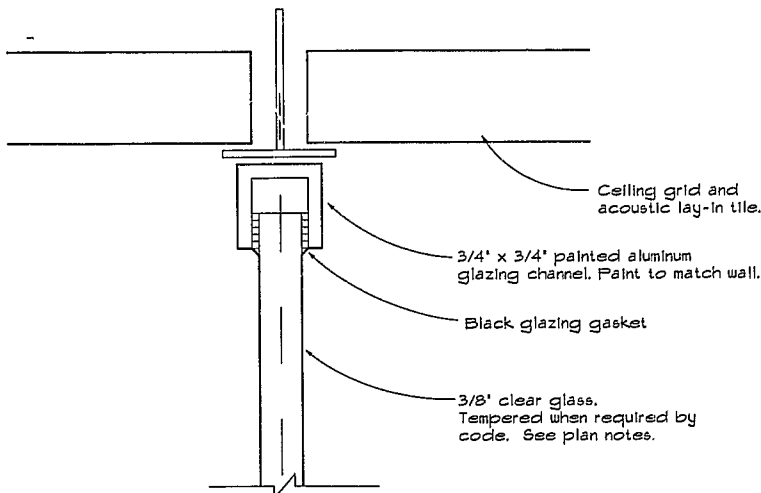
PROJECT

WR REED

DATE: 12/07/01
SCALE: 12"=1'-0"
DRAWING: RLT-ELEV

DETAIL

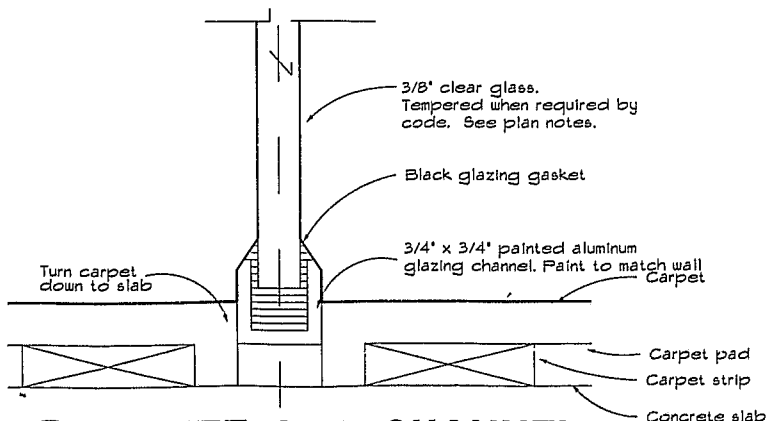
D9



1

RELITE HEAD CHANNEL

FULL SCALE



2

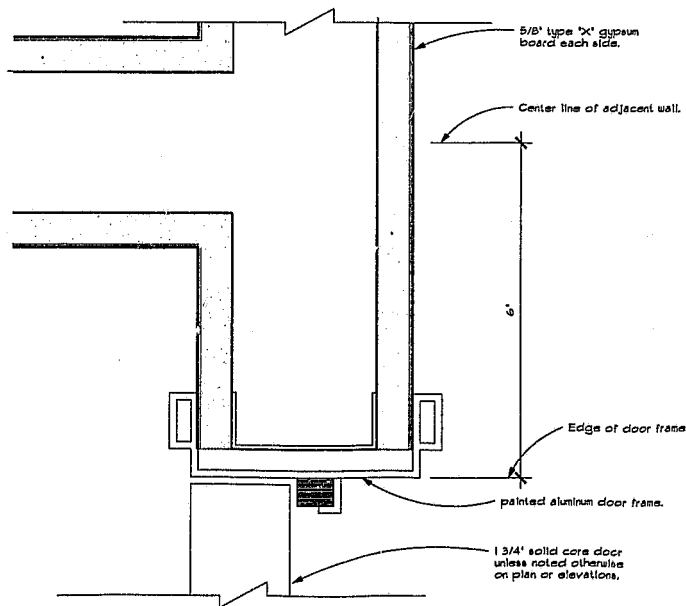
RELITE SILL CHANNEL

FULL SCALE

**HILLS
DESIGN
GROUP**

812 SW Washington Suite 1250
Portland, Oregon 97205
503.223.0805 fax 503.223.1070

PROJECT



NOTE:

All doors located next to adjacent perpendicular walls will be installed as indicated above unless noted otherwise on the floor plan.

WR REED

DATE: 12/07/01

SCALE: 6"=1'-0"

DRAWING: JAMB-WL

DETAIL

D10

1

DOOR JAMB TO WALL

1/2 FULL SCALE