

PORTLAND WATER BUREAU

WE SERVE EXCELLENT WATER EVERY MINUTE OF EVERY DAY

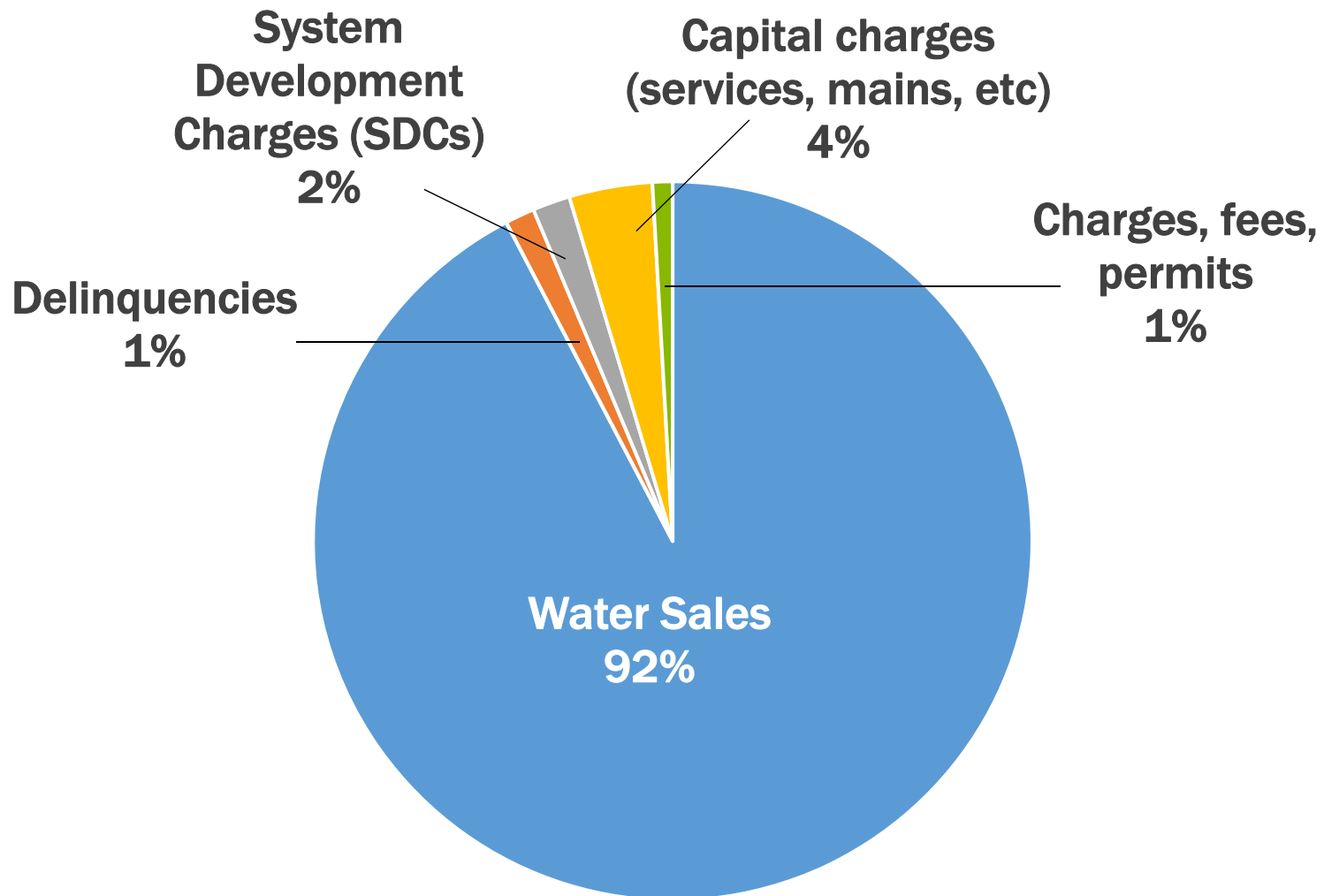


WATER RATES FOR FISCAL YEAR 2019-20

May 15, 2019



Water Revenues – FY 2019-20



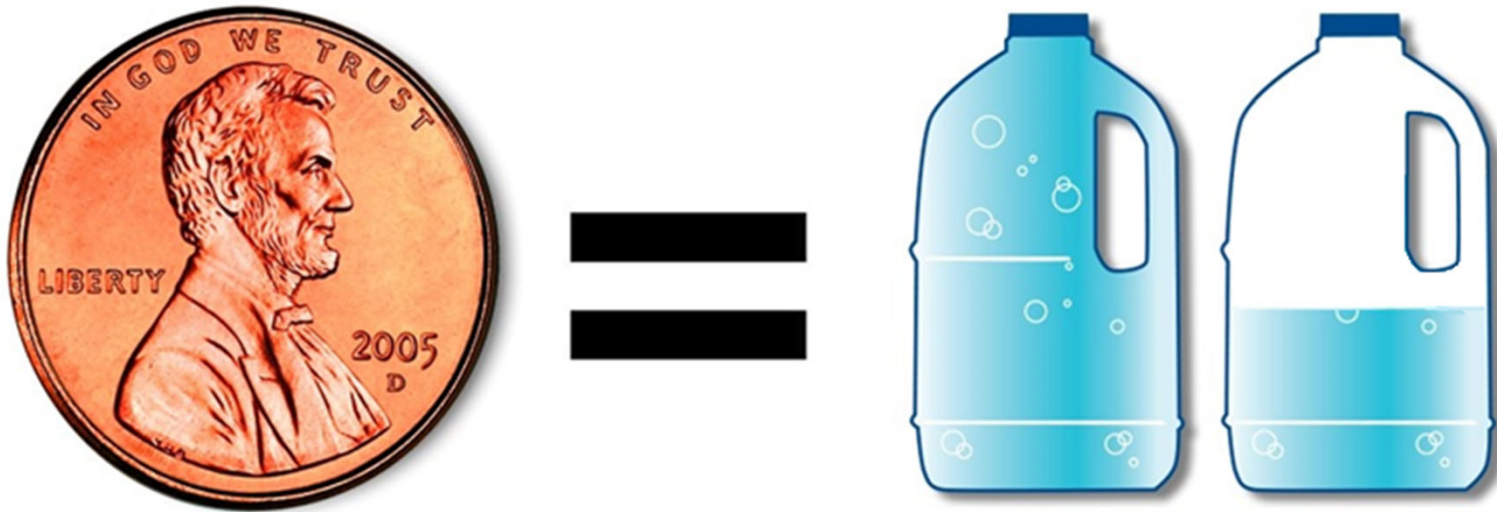
Rate Summary for Fiscal Year 2019–20

- **Retail water rate increase – 7.4%**
 - as directed by Commissioner Fritz
 - in line with 5-year forecast
- **System Development Charges – 9.1% increase**
 - driven by increased water system value from continued infrastructure investment
- **Fixed fees and charges**
 - Installations of services, mains, hydrants, and other development fees
 - calculated based on cost-of-service principles

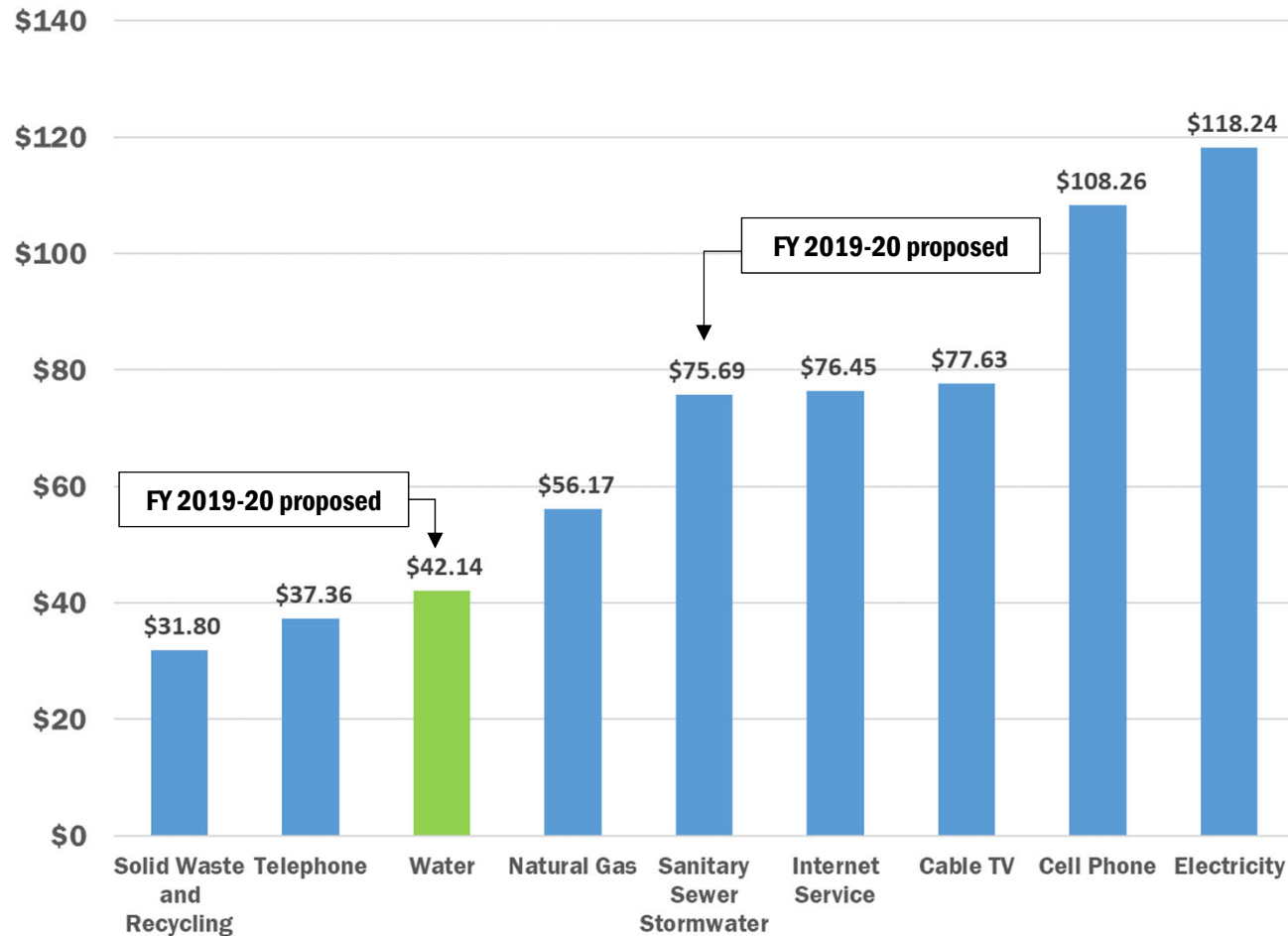
How will rate changes affect typical customer bills?

	Typical monthly use (ccf)	FY 2018-19	FY 2019-20	Change
Typical residential customers	5	\$39.24	\$42.14	\$2.90
Qualifying low-income residential customers	5	\$19.62	\$21.08	\$1.46
Qualifying extremely low- income residential customers	5	\$7.86	\$8.44	\$0.58
Medium-sized commercial customers	100	\$533.37	\$572.85	\$39.48

1.4 Gallons of Water for a Penny

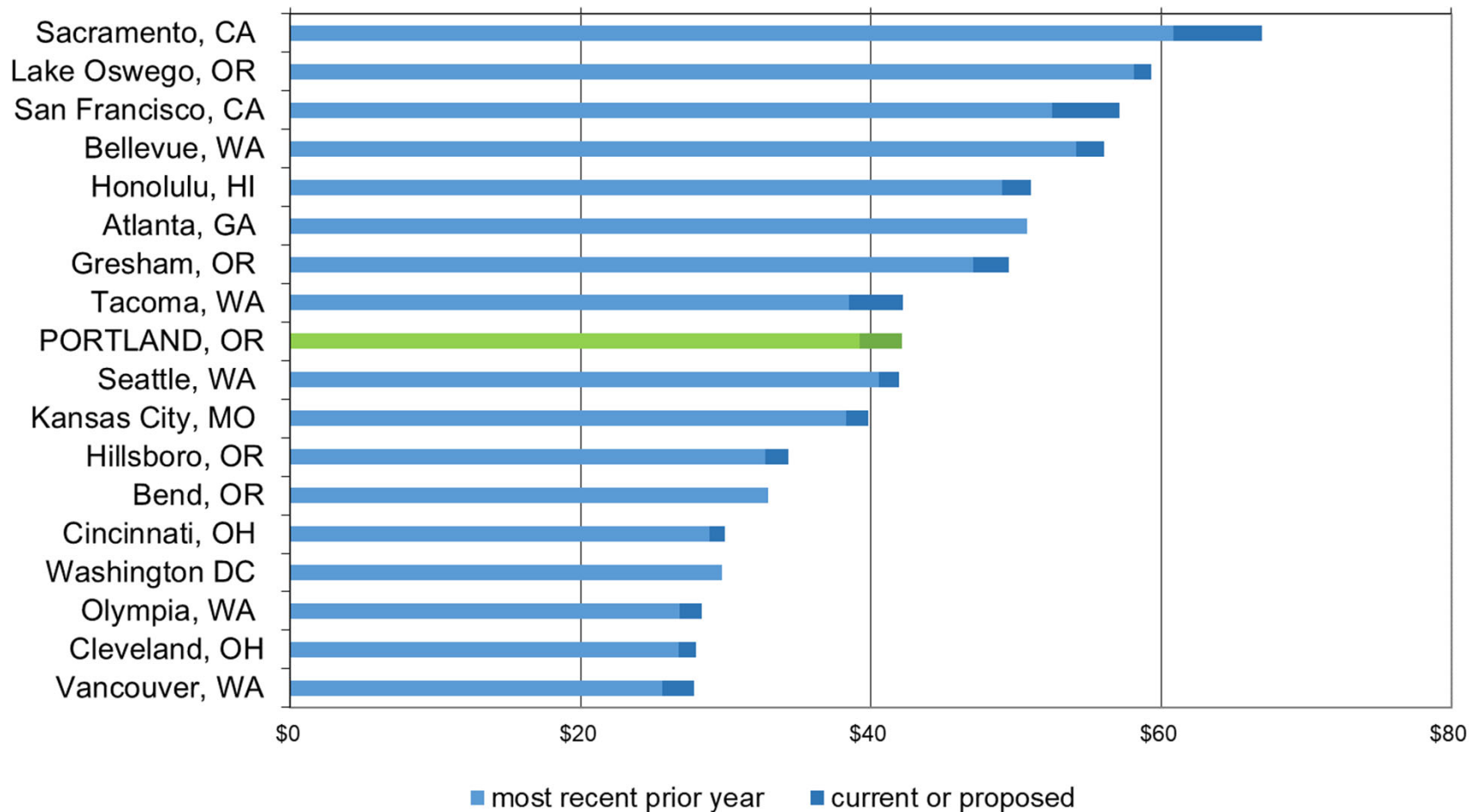


Portland water bills represent 7% of the typical monthly utility services for residential customers.



Solid Waste & Recycling—35-gallon cart, bi-weekly outside pickup | **Telephone**—With calling features such as caller ID, call waiting, voicemail, and unlimited national-wide calling | **Water**—Typical single family using 5 ccf per month | **Natural Gas**—Average Oregon residential customer using 55 therms per month | **Sanitary Sewer & Stormwater**—Average single family | **Internet Service**—Download speed at up to 60 MBps including modem | **Cable TV**—Digital starter with HD receiver equipment | **Cell Phone**—Family plan, 2 lines, unlimited talk and text, 3 GB shared data | **Electricity**—Average residential customer using 900kWh per month

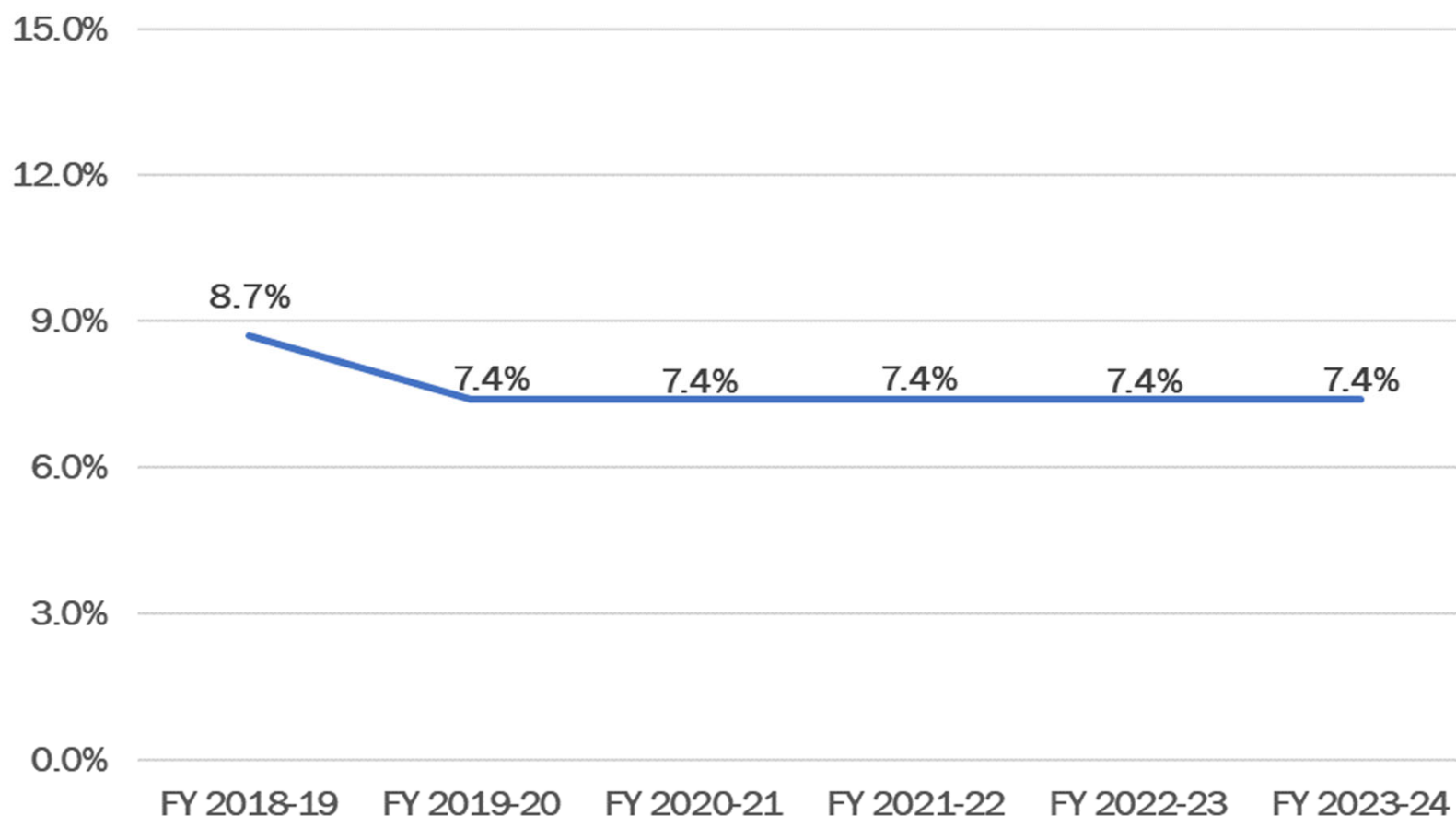
How do Portland's FY 2019-20 water rates compare?



Based on proposed rates to be effective July 1, 2019, if available; otherwise based on current rates. Water bills are calculated based on typical or average usage for each water provider.

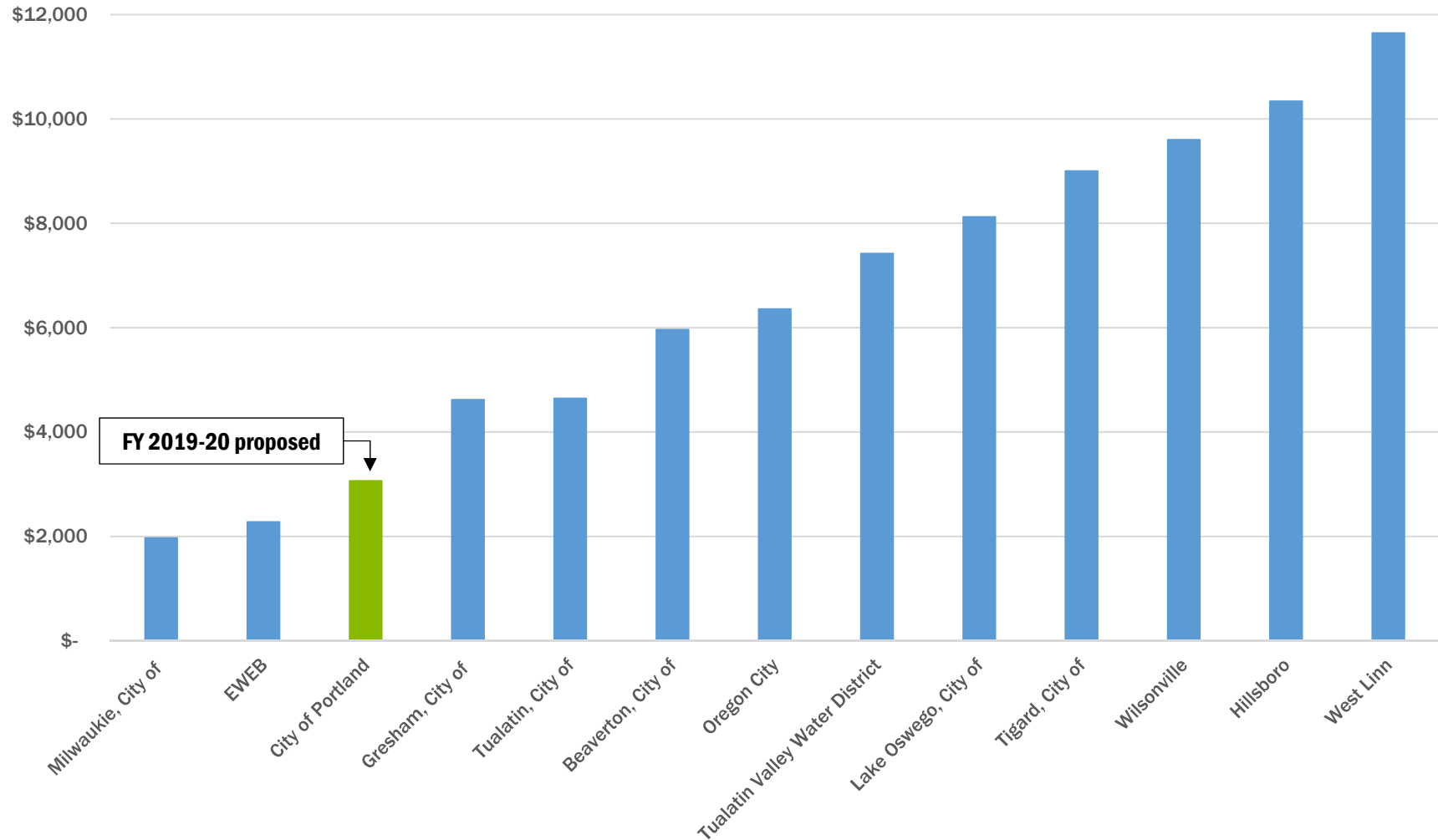
WATER RATES FOR FISCAL YEAR 2019-20

Current Rate Increase and Forecast



Beginning in FY 2018-19, rates include an estimated 2.2% rate impact to fund the Filtration Project.

How do Portland's System Development Charges compare?



Proposed rate for Portland effective FY 2019-20. All others based on current rates unless proposed rate available.

Assistance Programs

- Qualifying low-income customers receive a discount of \$21.07 per month as of FY 2019-20.
- Qualifying extremely low-income customers receive a discount of \$33.70 per month as of FY 2019-20
- Approximately 7,000 current program participants
- Program also includes:
 - Crisis voucher of \$500
 - Multi-family crisis assistance