

**PBOT**  
PORTLAND BUREAU OF TRANSPORTATION

1120 SW Fifth Avenue, Suite 800 Portland, OR 97204 503.823.5185  
Fax 503.823.7576 TTY 503.823.6868 [www.portlandoregon.gov/transportation](http://www.portlandoregon.gov/transportation)

Chloe Eudaly Commissioner Chris Warner Interim Director

# The Earl Blumenauer

Bicycle & Pedestrian Bridge (formally Sullivan's Crossing)

May 23, 2019





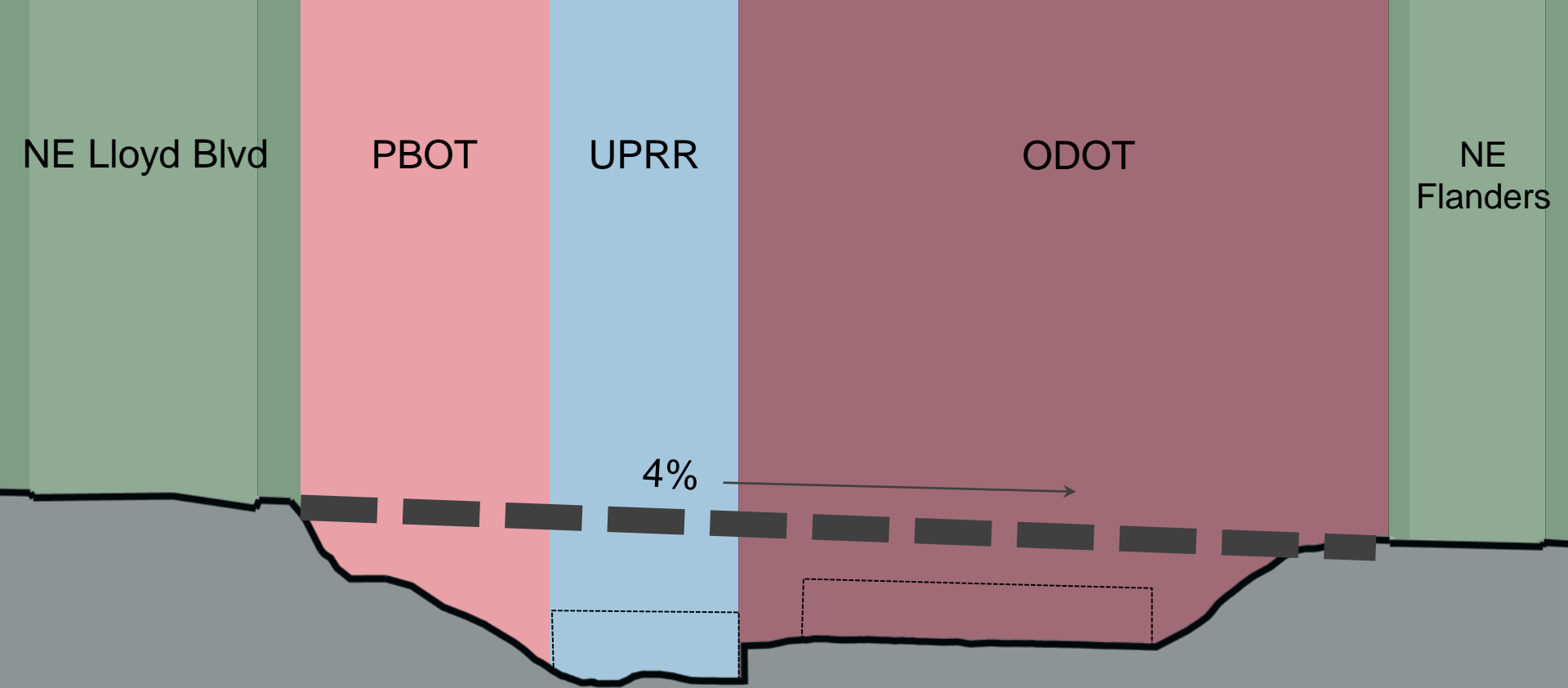
NE 7th Ave

NE Flanders

NE Lloyd Blvd

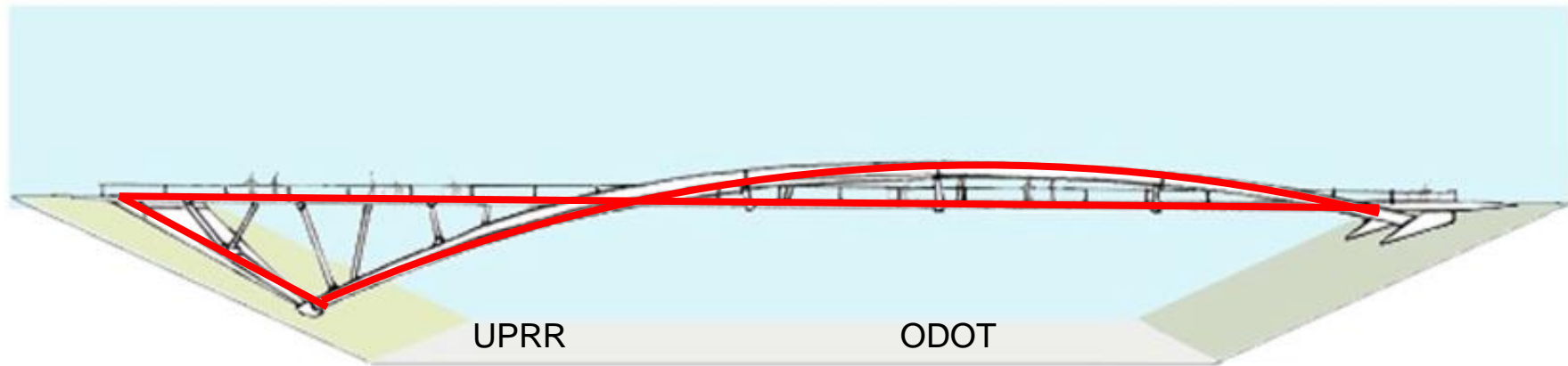
NE 7th Ave

context

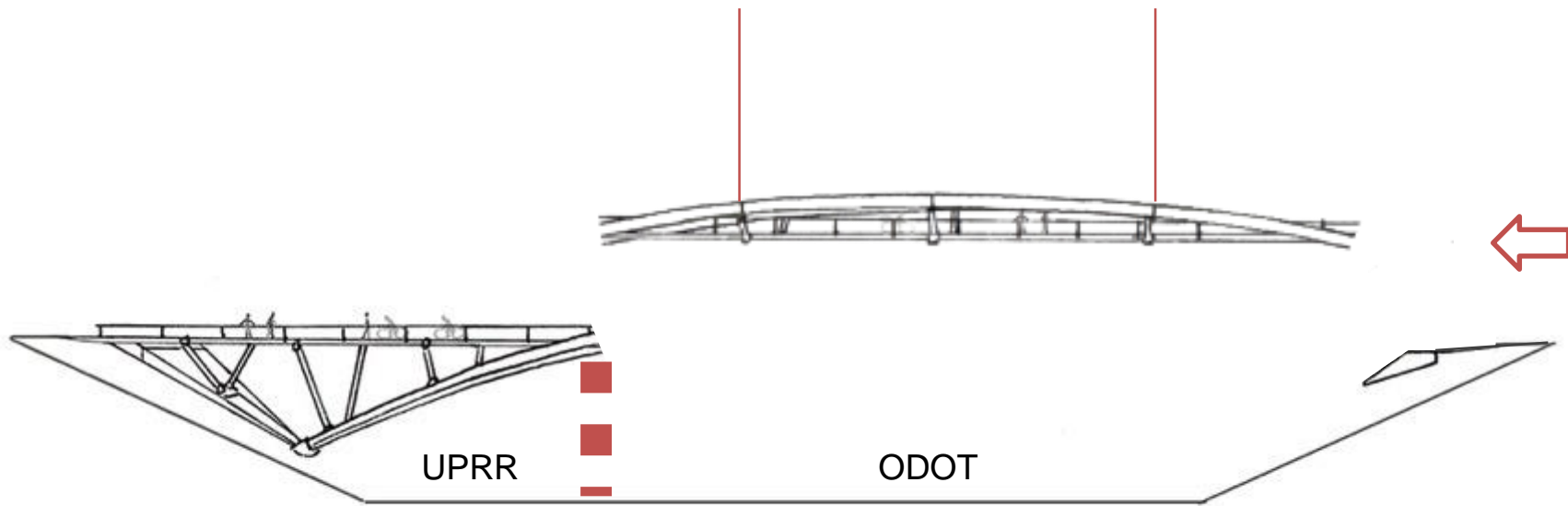


topographical section looking east

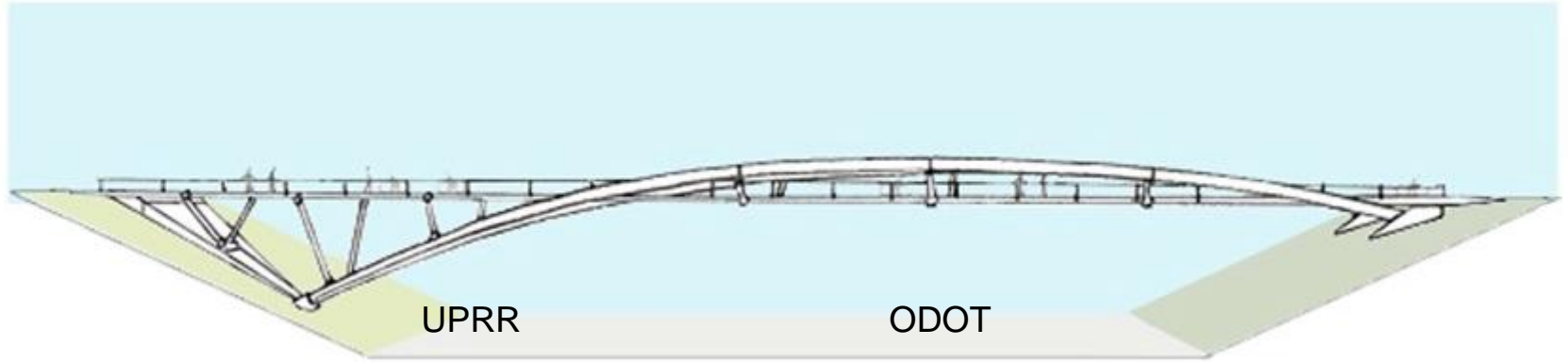




structural logic



construction logic

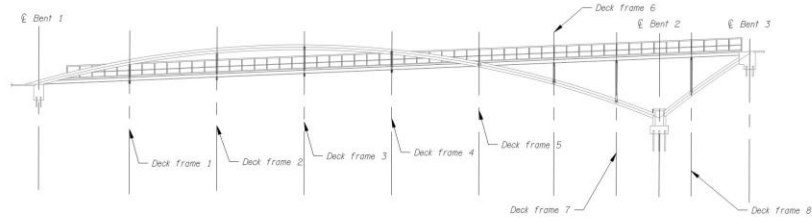


construction logic



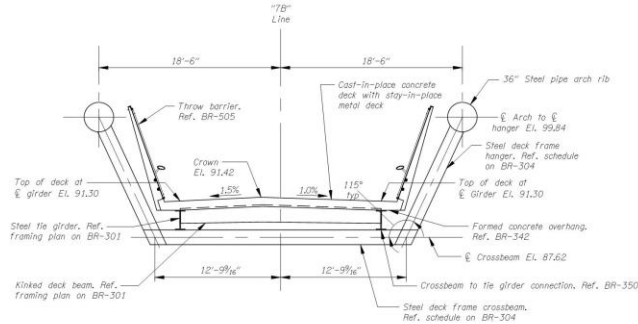
Deck Frame #	Station	Crossbeam to Hanger (Offset ft)	Hanger Length $\epsilon$ to $\epsilon$	Hanger / Strut Member Size	Hanger / Strut Member Size
DF1	11+65.91	12.80	13.49	W18x143	W18x143
DF2	12+19.28	12.54	18.73	W18x119	W18x119
DF3	12+72.66	12.81	18.58	W18x119	W18x119
DF4	13+26.03	13.62	13.10	W18x143	W18x143
DF5	13+79.41	N/A	N/A	22"x11.5"	N/A
DF6	14+25.16	11.00	10.71	W18x86	W18x86
DF7	14+63.28	11.00	24.58	W18x119	W18x119
DF8	15+09.03	11.00	21.76	W18x119	W18x119

### DECK FRAME SCHEDULE



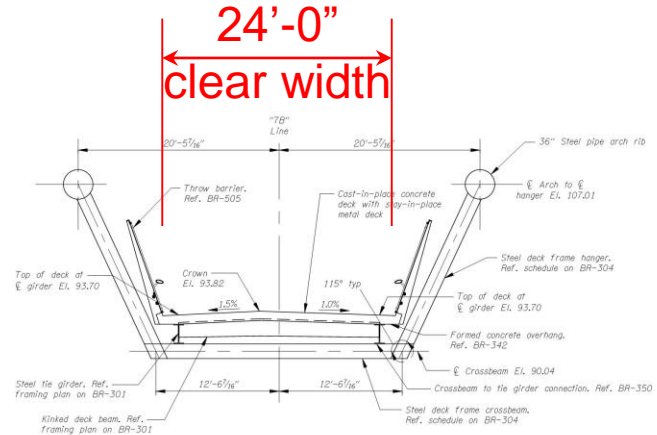
### BRIDGE ELEVATION

Scale: 1"=30'-0"



### DECK FRAME 1 AT STATION 11+65.91

Scale: 1"=5'



### DECK FRAME 2 AT STATION 12+19.28

Scale: 1"=5'

WARNING  
0 1/2 1  
IF THIS BAR DOES  
NOT MEASURE  
THIS DRAWING IS  
NOT TO SCALE

**kpff**

111 SW 7th Ave., Suite 2500  
Portland, OR 97204  
P: 503.227.4251  
F: 503.224.4982  
www.kpff.com

90% DESIGN SUBMITTAL  
4/15/19

**PBOT**  
PORTLAND BUREAU OF TRANSPORTATION  
CHIEF OF BUREAU  
STEVE TOWNSEN, P.E.



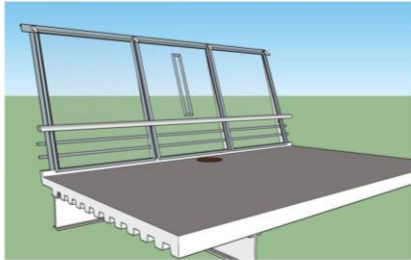
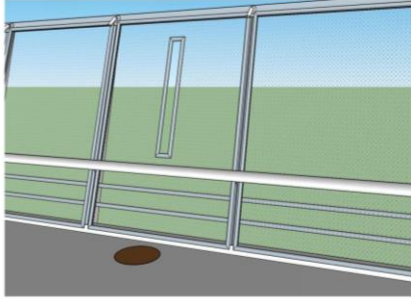
Sullivan's Crossing  
Bicycle and Pedestrian Bridge  
Deck Frame Sections I

DESIGNER  
Tnta35  
PROJECT NO.  
T00638  
SHEET NO.  
BR304

bridge section





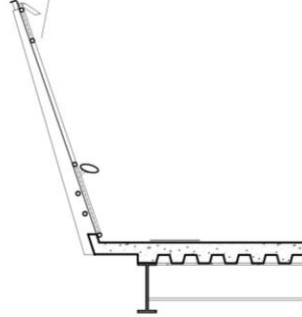


4

Perspective Views

no scale

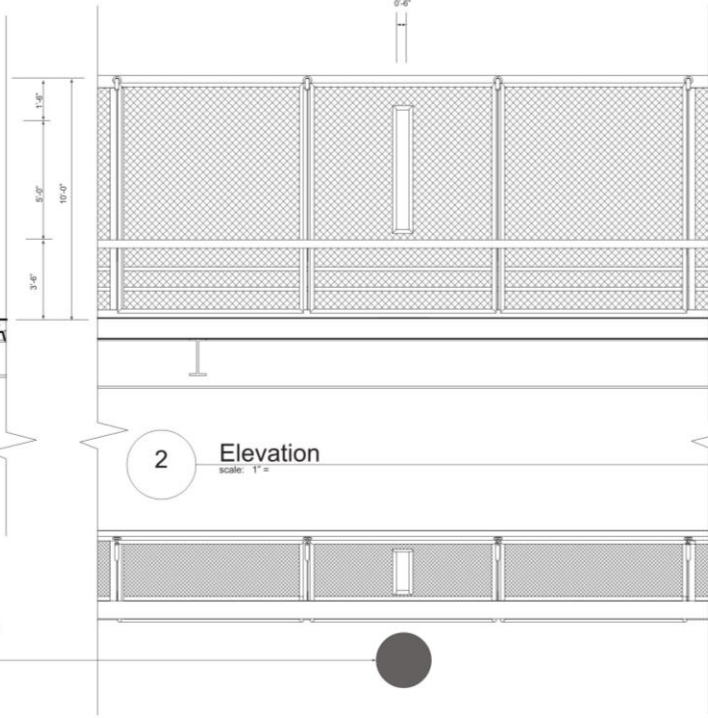
6" wide x 5'-0" high opening in mesh to frame view corridor. Bottom at 3'-6" above deck (guardrail height).



1

Section

scale: 1" =



2

Elevation

scale: 1" =

Embedded Informative Medallion  
(Bronze or other material,  
content and design by owner)

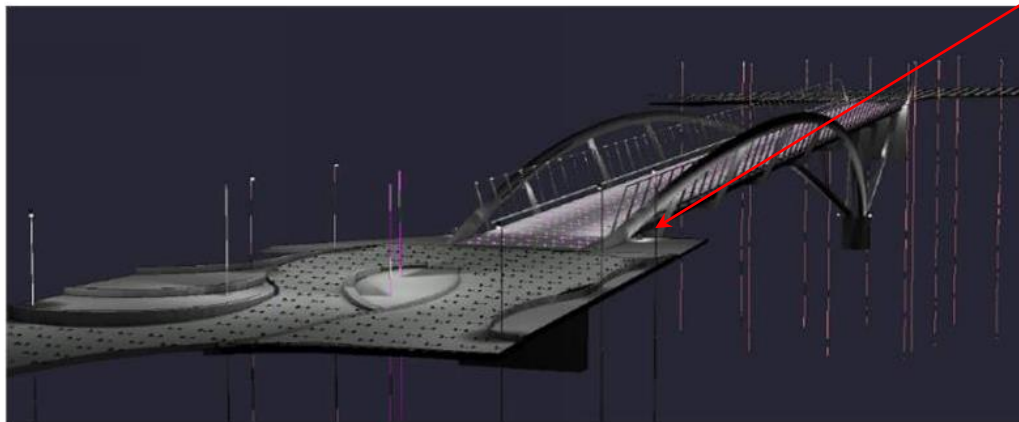
3

Plan

scale: 1" =

viewpoint layout

lighting



Pedestrian Lighting  
at Landings







bridge at north landing





color – white painted steel





NE 7th Ave

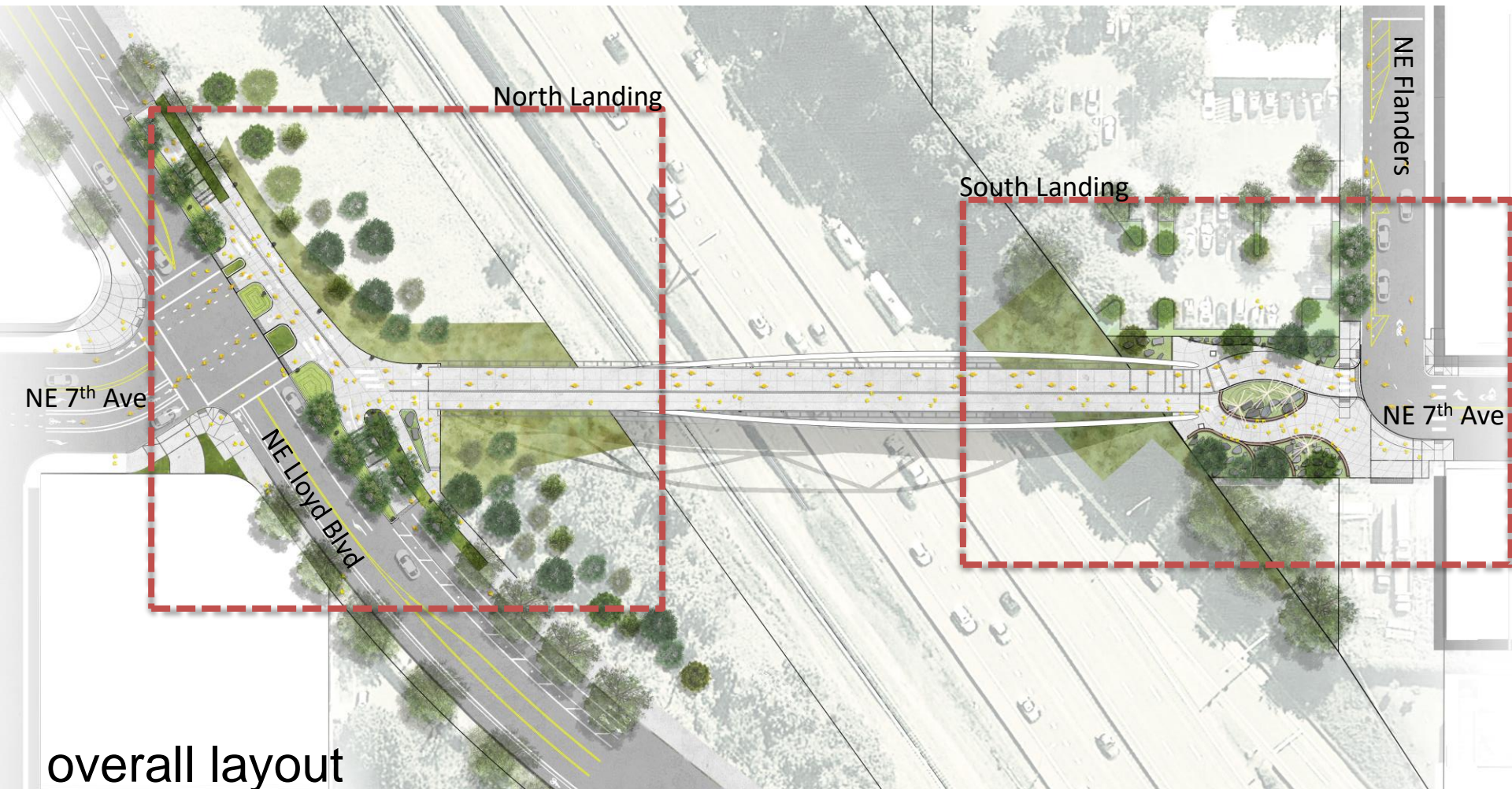
NE Flanders

NE Lloyd Blvd

NE 7th Ave

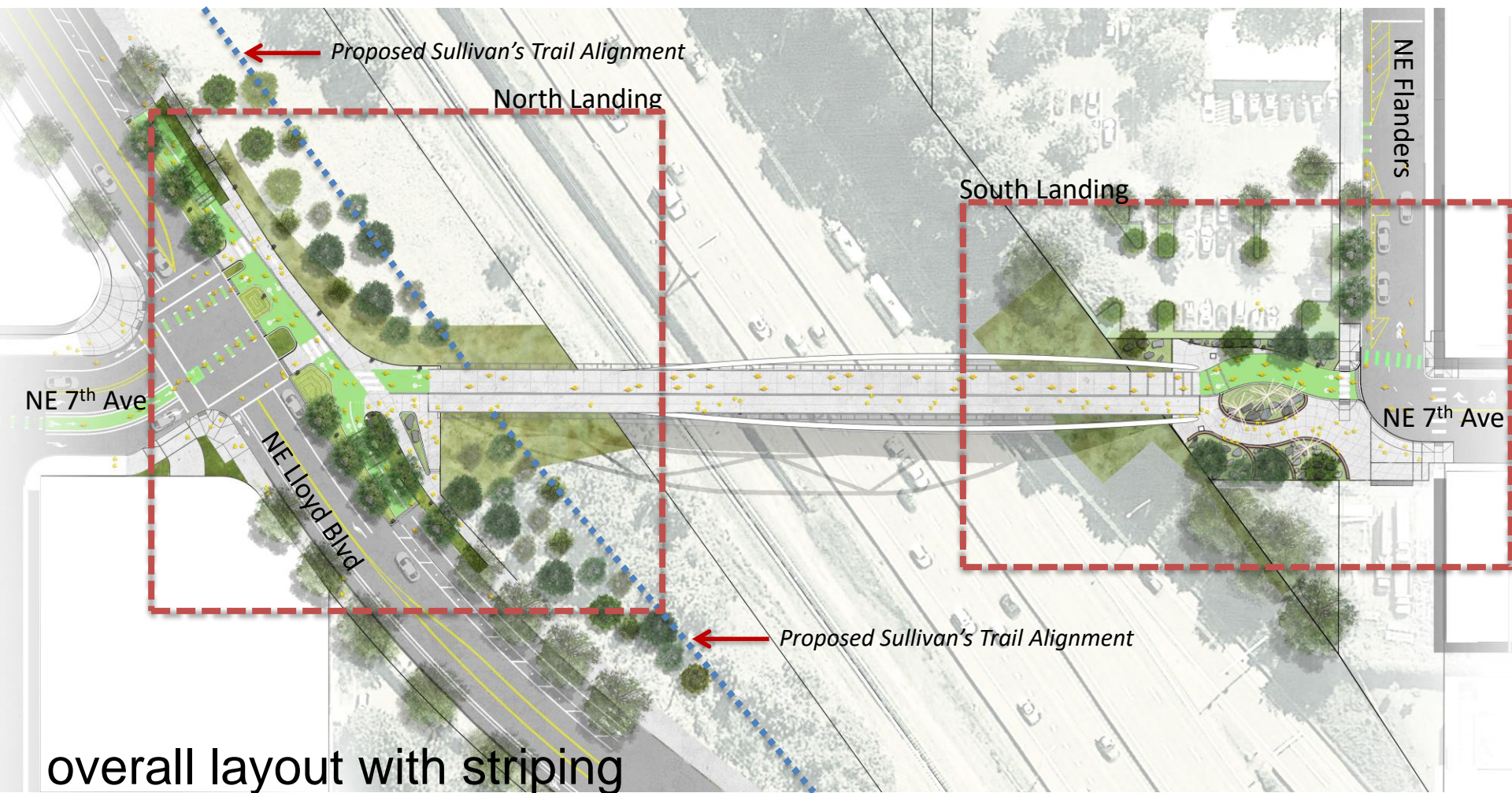
context





overall layout





*Proposed Sullivan's Trail Alignment*

North Landing

South Landing

NE Flanders

NE 7th Ave

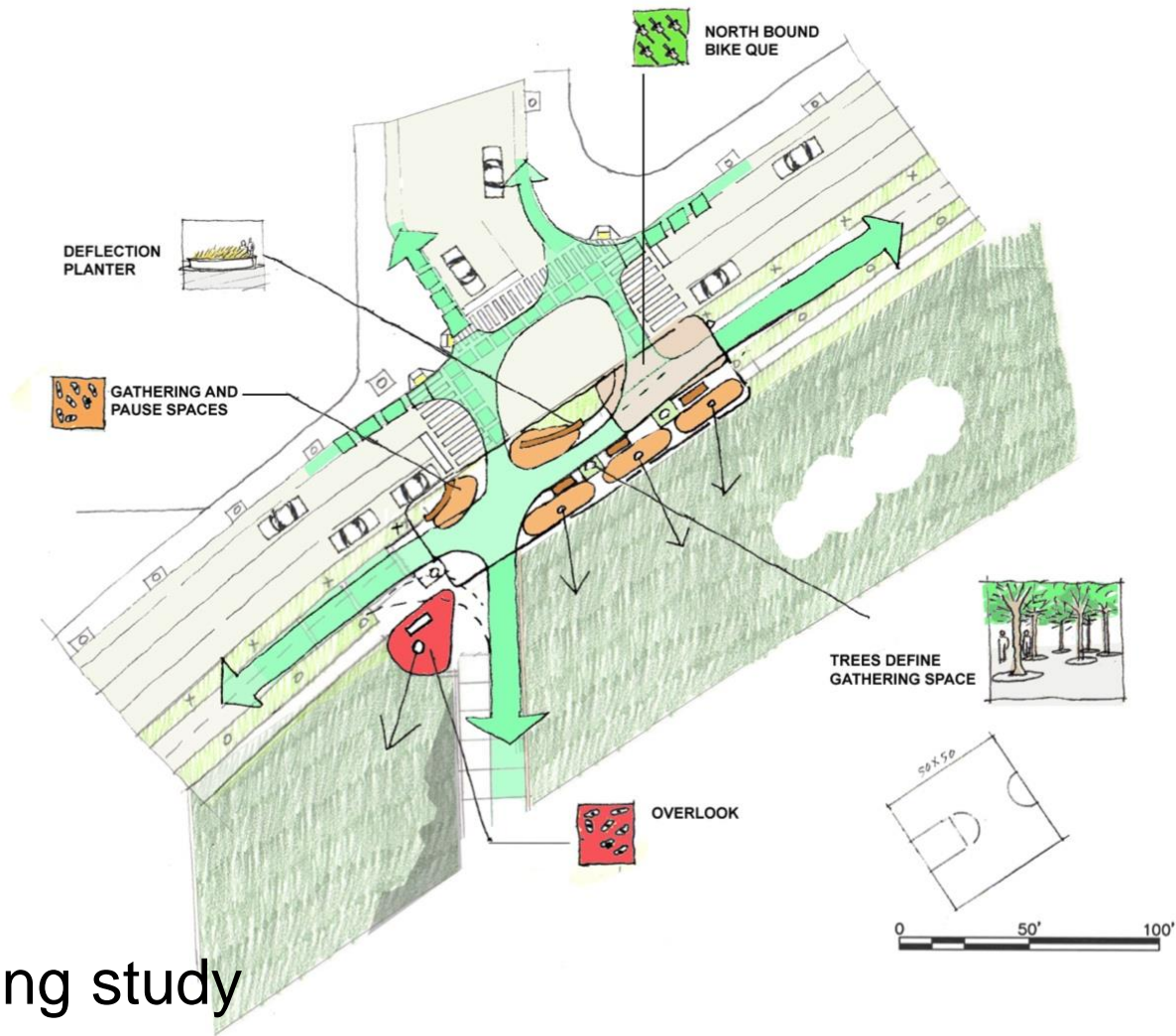
NE Lloyd Blvd

NE 7th Ave

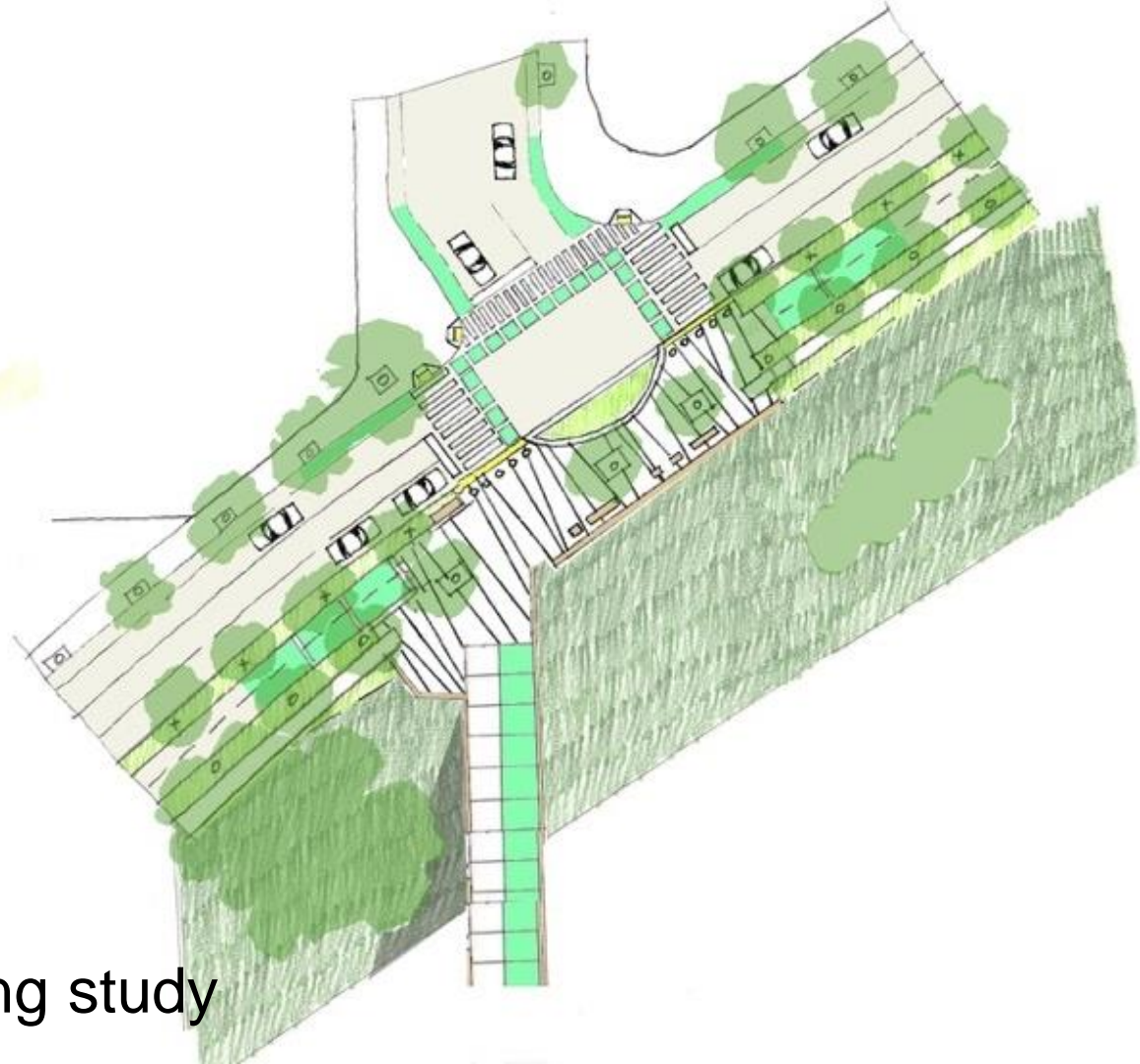
*Proposed Sullivan's Trail Alignment*

overall layout with striping



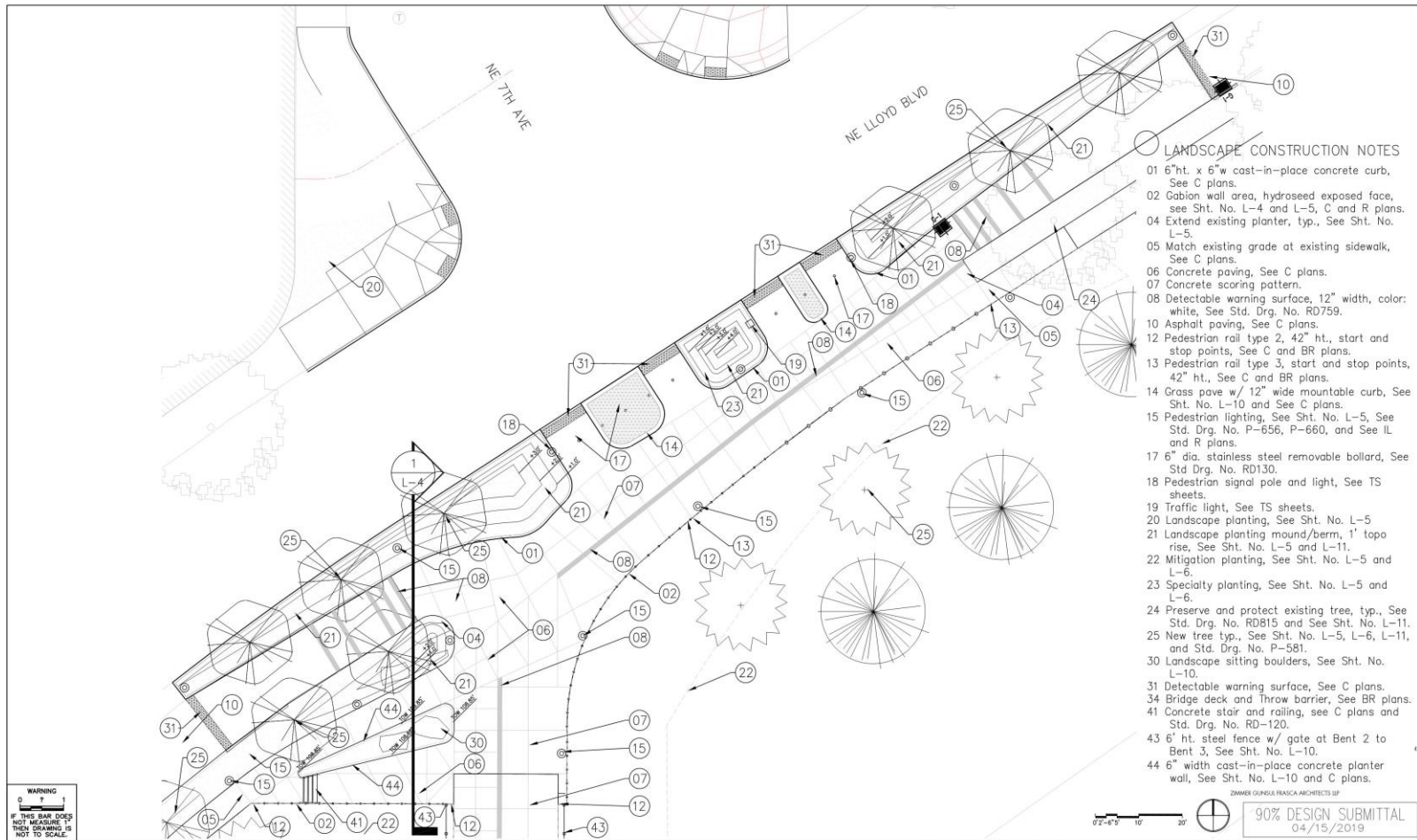


north landing study



north landing study

north landing







north landing





north landing with striping





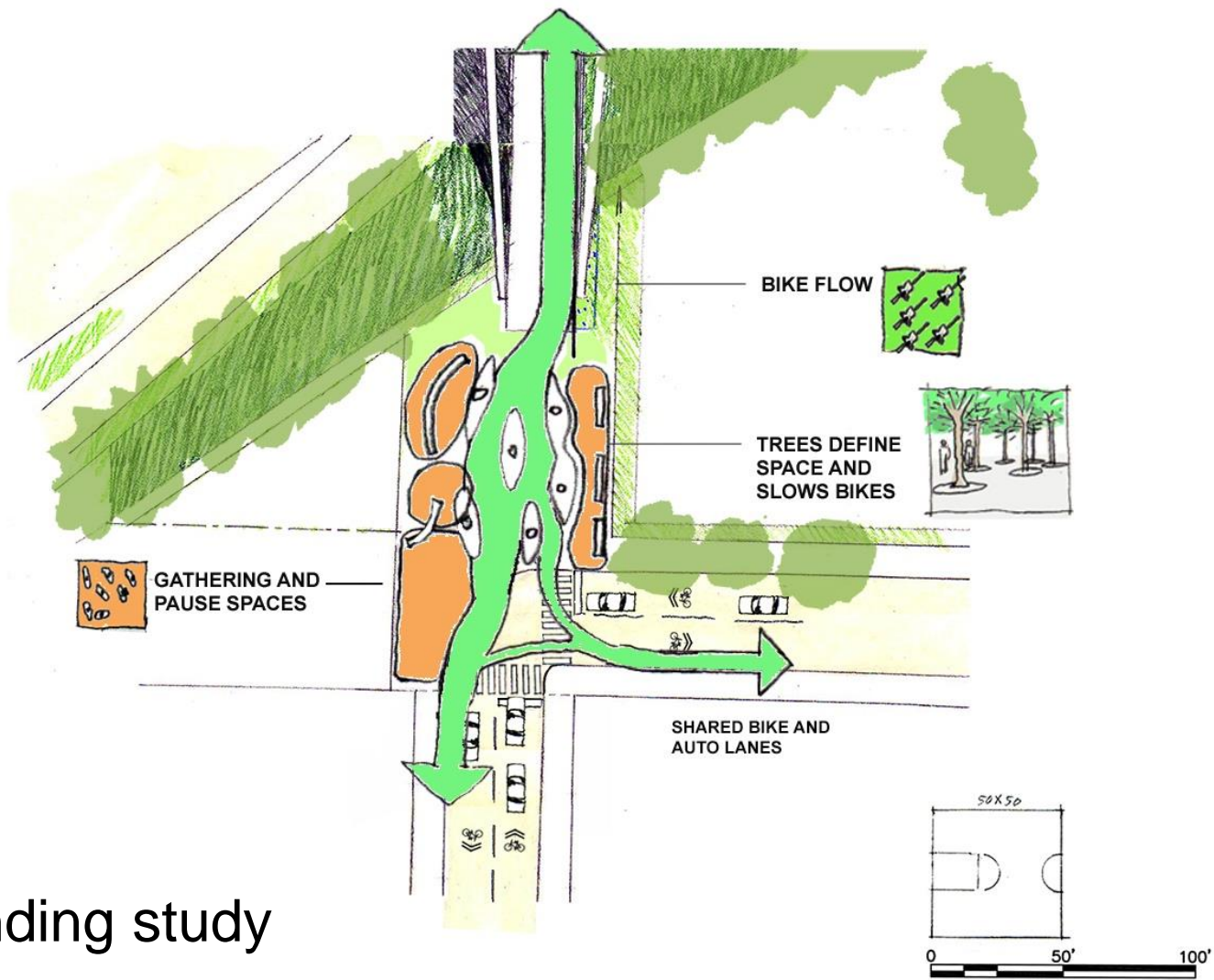
north landing perspective





ne 7<sup>th</sup> ave looking north

# south landing study

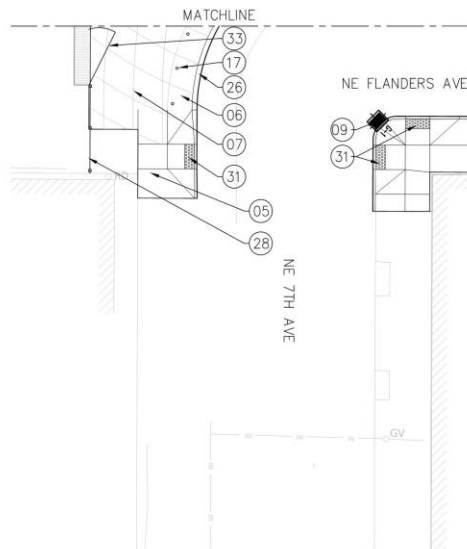
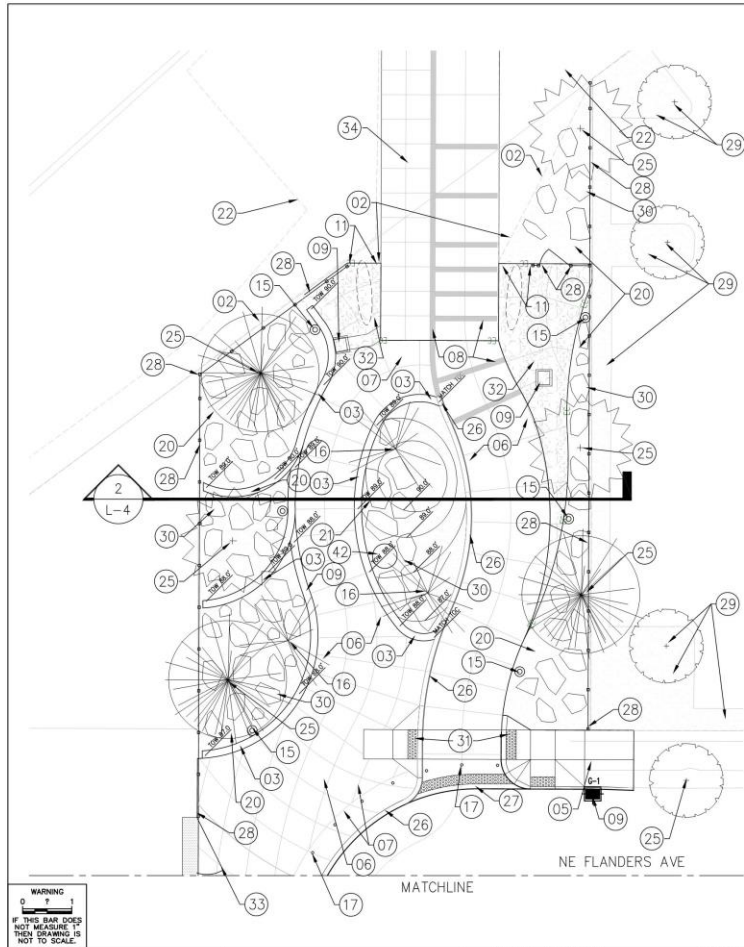




south landing study



# south landing



- ## LANDSCAPE CONSTRUCTION NOTES
- 01 6"ht. x 6"w cast-in-place concrete curb, See C plans.
  - 02 Gabion wall area, hydroseed exposed face, see Sht. No. L-4 and L-5, See C and R plans.
  - 03 18"width cast-in-place concrete planter wall, height varies, architectural smooth form finish, See Sht. No. L-10.
  - 05 Match existing grade at existing sidewalk, See C plans.
  - 06 Concrete paving, See C plans.
  - 07 Concrete scoring pattern.
  - 08 Detectable warning surface, 12' width, color: white, See Std. Drg. No. RD759.
  - 09 Catch basin, See C plans.
  - 11 8' throw barrier fence, See BR plans.
  - 15 Pedestrian lighting, See Sht. No. L-5, See Std Drg. No. P-656, See Std Drg. No. P-660, P-663, and See IL plans.
  - 16 Specialty pedestrian lighting, See Sht. No. L-5, See Std Drg. No. P-663, and See IL plans.
  - 17 6" dia. stainless steel removable bollard, See Std. Drg. No. RD130.
  - 20 Landscape planting, See Sht. No. L-5 and L-11.
  - 21 Landscape planting mound/berm, 1' topo rise, See Sht. No. L-5, L-7, and L-11.
  - 22 Mitigation planting, See Sht. No. L-5 and L-7.
  - 23 Feature planting, See Sht. No. L-5, L-7, and L-11.
  - 24 Preserve and protect existing tree, See Std. Drg. No. RD-815.
  - 25 New tree, typ., See Sht. No. L-5, L-7, L-11, and Std. Drg. No. RD815.
  - 26 12" wide mountable curb, See C plans.
  - 27 Flush concrete curb and gutter, See C plans.
  - 28 6' ht. steel fence and gate, See Sht. No. L-10.
  - 29 Replace landscape and trees in parking lot staging area, See Sht. No. L-5, L-7, and L-11.
  - 30 Landscape sitting boulders, See Sht. No. L-10.
  - 31 Detectable warning surface, See C plans.
  - 32 Exposed aggregate concrete surface paving: 3/8" - 1/2" depth, See C plans.
  - 33 6' ht. steel gate, 12' wide, See Sheet No. L-10.
  - 34 Bridge deck and Throw barrier, See BR plans.
  - 42 Manhole cover at-grade of landscape surface, See C plans.

**ZGF**  
ZIMMER GUNDEL FRASCA ARCHITECTS LLP  
1221 SW Washington Street  
Suite 200  
Portland, OR 97205  
T 503.224.3800  
F 503.224.2482  
www.zgf.com

**90% DESIGN SUBMITTAL**  
04/15/2019

**PBOT**  
PORTLAND BUREAU OF TRANSPORTATION  
CHLOE EUDALY  
STEVE TOWNSEN, P.E.



Sullivan's Crossing  
Bicycle and Pedestrian Bridge  
**SOUTH LANDING SITE PLAN**

1/4"=1'-0"  
Info35  
PROJECT NO.  
1006.36  
SHEET NO.  
**L-3**



south landing





south landing with striping







To be updated

south landing perspective





SPEED  
LIMIT  
50



**PBOT**

PORTLAND BUREAU OF TRANSPORTATION  
Commissioner: DAN SALTZMAN | Director: LEAH TREAT