



LLOYD CENTER - WEST ANCHOR RENOVATION

DESIGN REVIEW LU 18-198469 DZM

SOUTH PLAZA RENDERING

OCTOBER 18, 2018



waterleaf
architecture, interiors + planning



AP40



9/27/18 SOUTH PLAZA RENDERING

REDUCED PARAPET BY 1/3rd

Exposed panel before: 11'-4"



10/18/18 SOUTH PLAZA RENDERING

Exposed panel after: 7'-8"



REDUCED PARAPET BY 1/3rd

Exposed panel before: 11'-4"



Exposed panel after: 7'-8"



REDUCED PARAPET BY 1/3rd

Exposed panel before: 11'-4"



Exposed panel after: 7'-8"



VIEW FROM SOUTH SIDE OF MULTNOMAH

LLOYD CENTER - WEST ANCHOR RENOVATION

DESIGN REVIEW LU 18-198469 DZM

SOUTH PLAZA RENDERING

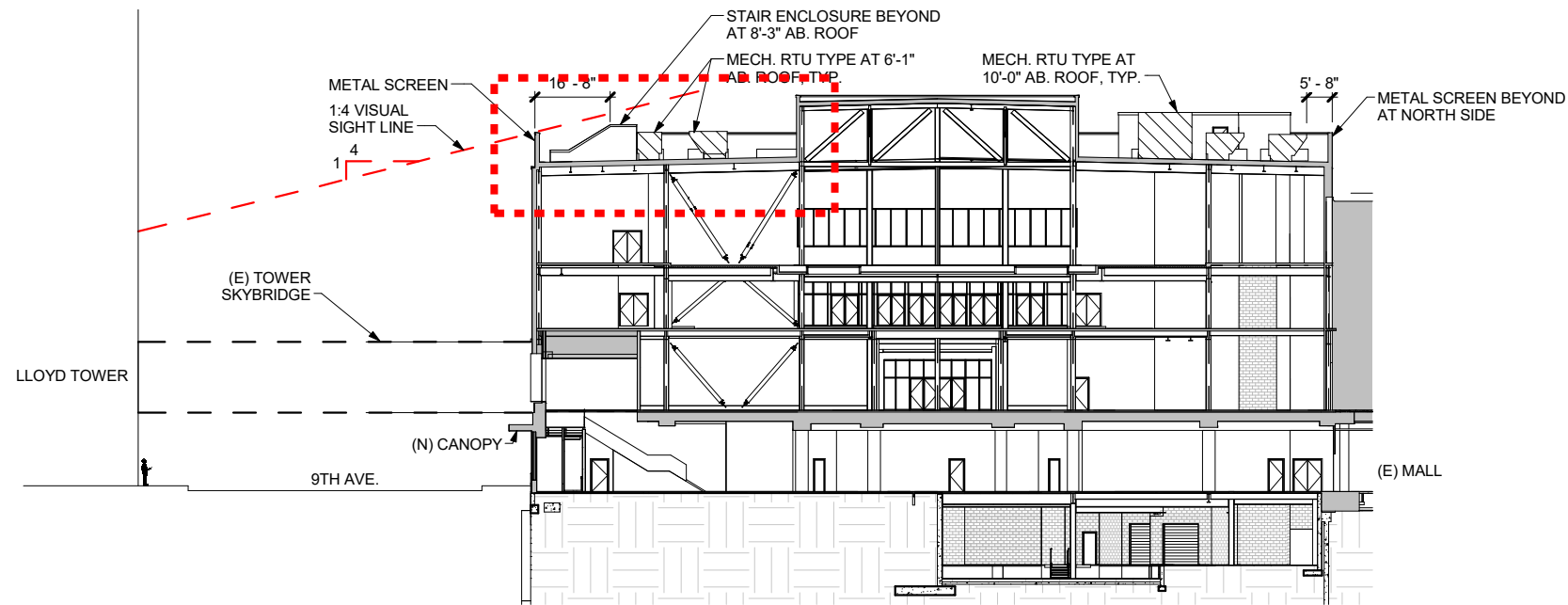
OCTOBER 18, 2018



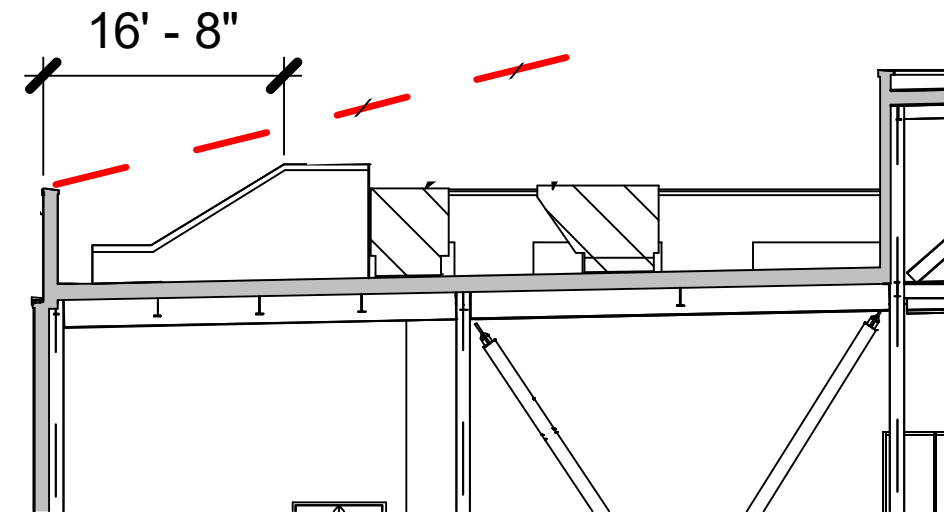
waterleaf
architecture, interiors + planning



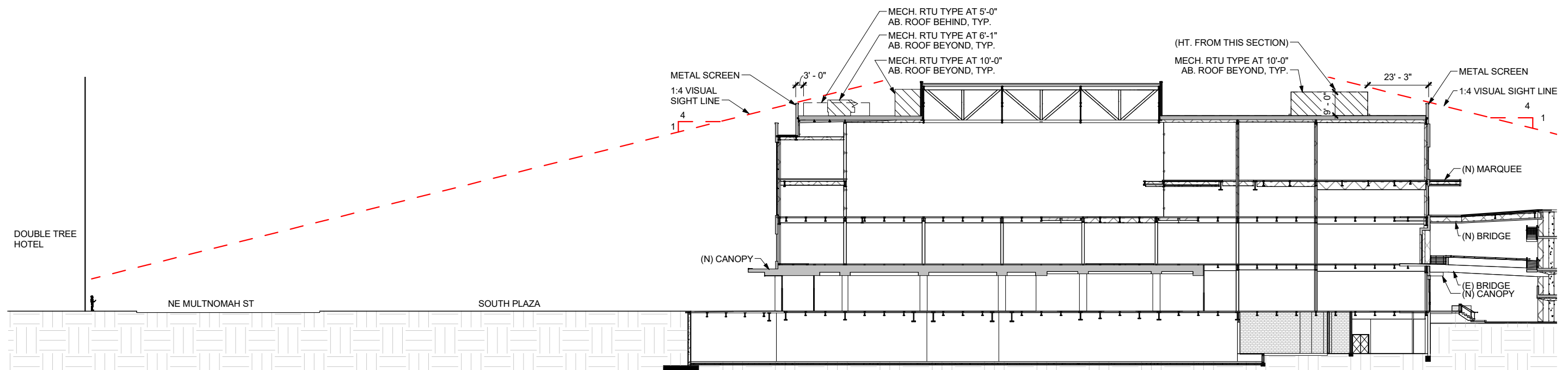
AP32



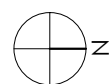
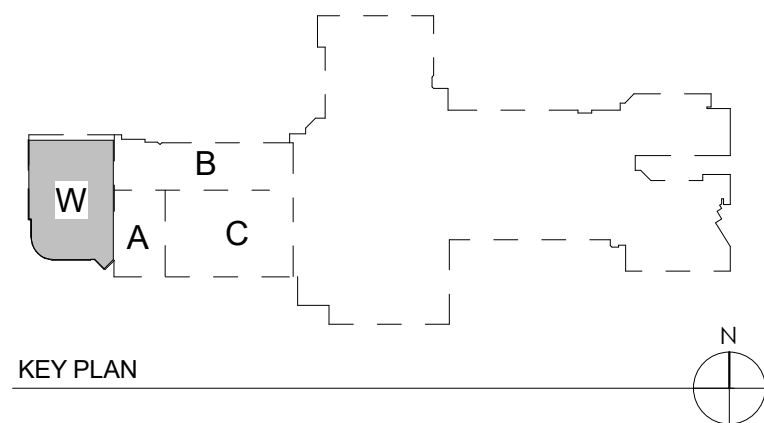
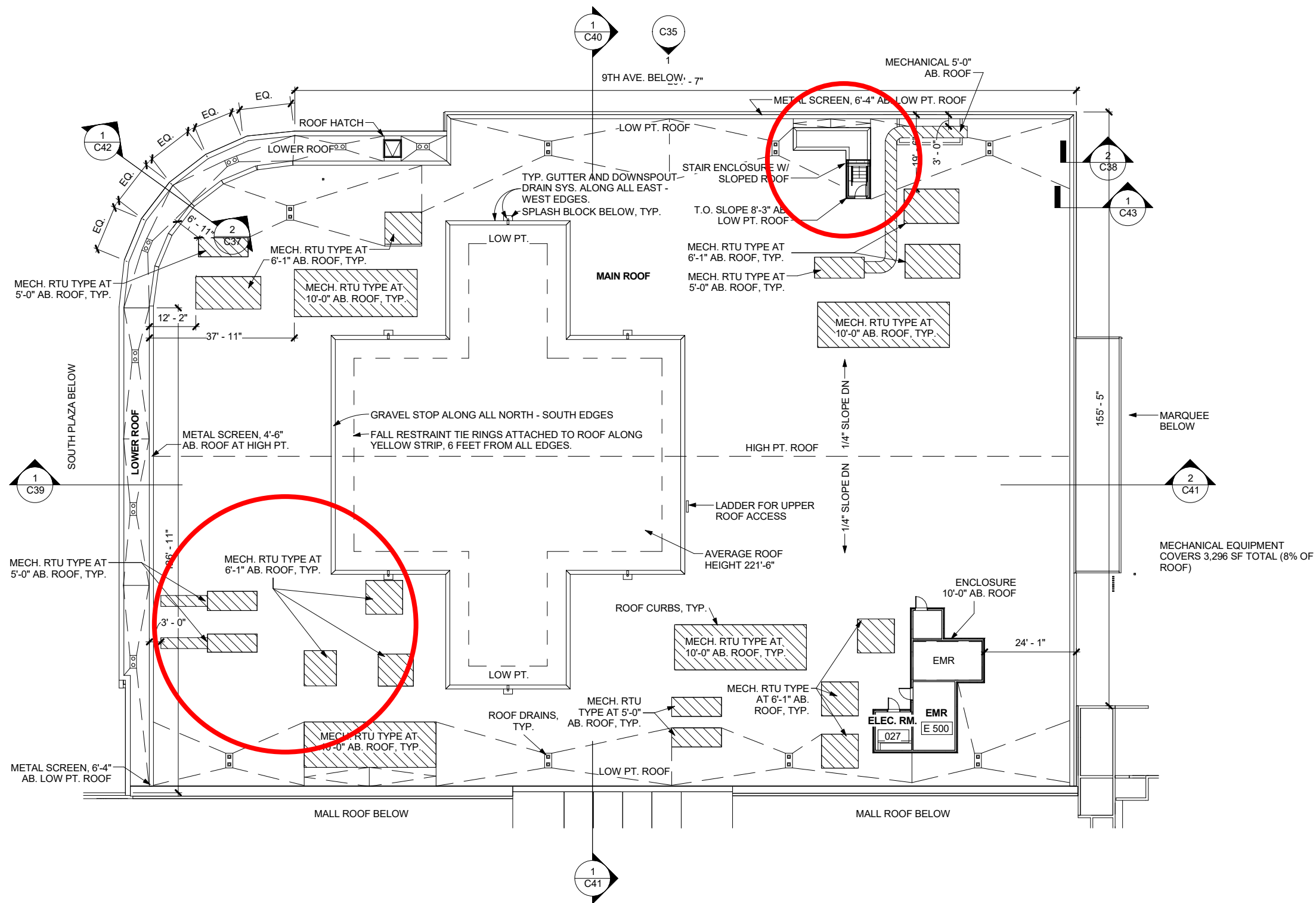
① BUILDING SECTION - EW - BLOCK W
1" = 40'-0"

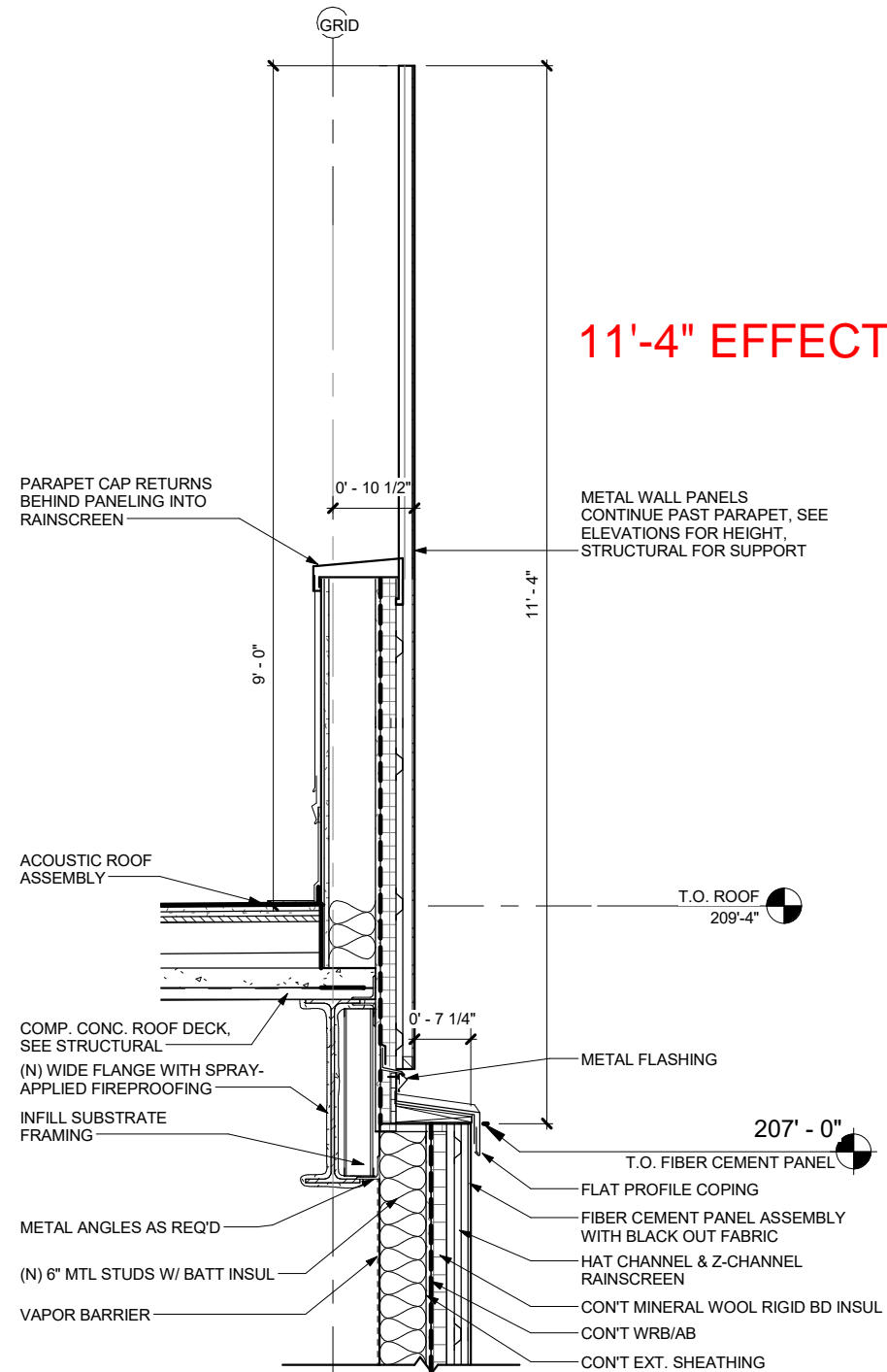


PARAPET SIGHT LINE SECTION



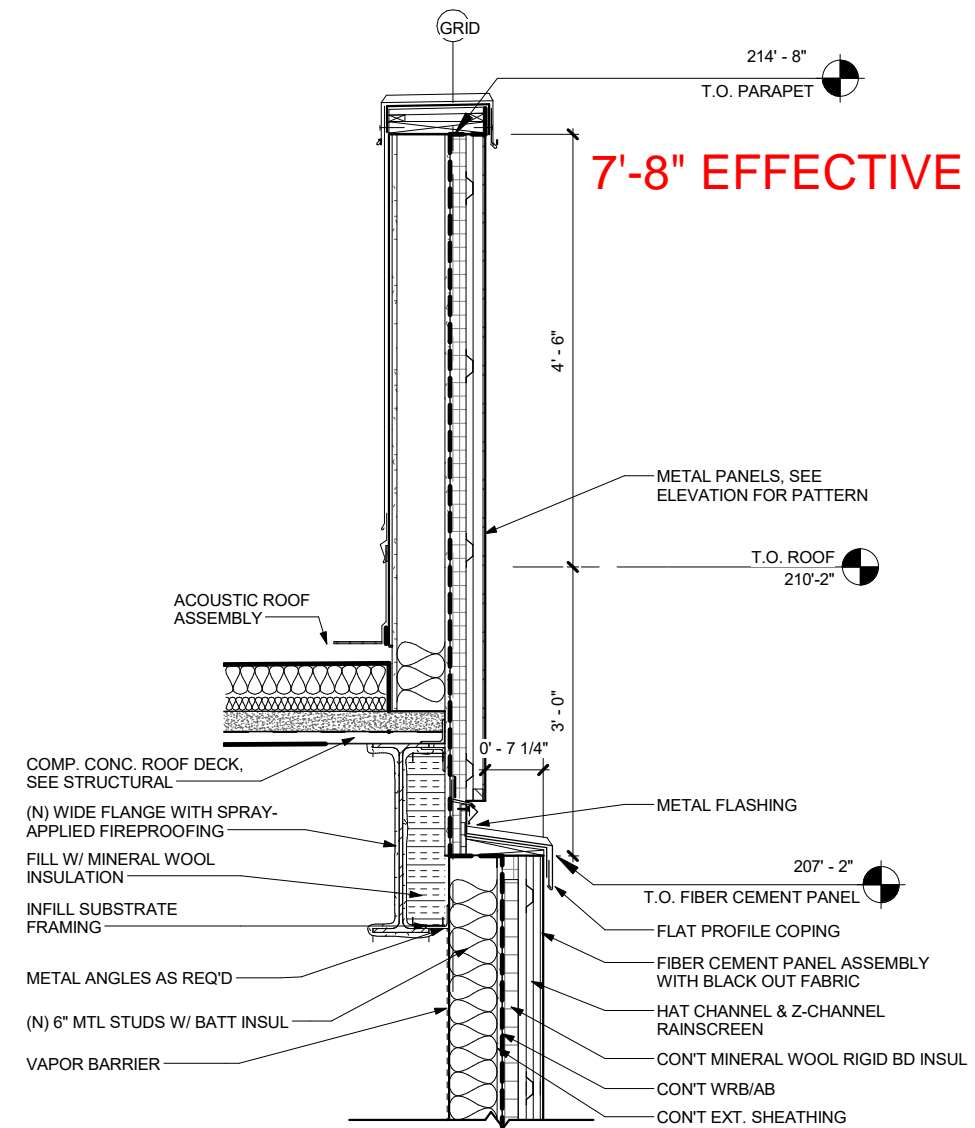
② BUILDING SECTION - NS - BLOCK W
1" = 40'-0"





② WALL SECTION - PARAPET DETAIL
1/2" = 1'-0"

9/27/18 PARAPET DETAIL



② WALL SECTION - PARAPET DETAIL
1/2" = 1'-0"

10/18/18 PARAPET DETAIL



LLOYD CENTER - WEST ANCHOR RENOVATION

DESIGN REVIEW LU 18-198469 DZM

NORTH COURTYARD RENDERING

OCTOBER 18, 2018



waterleaf
architecture, interiors + planning



AP43



LLOYD CENTER - WEST ANCHOR RENOVATION

DESIGN REVIEW LU 18-198469 DZM

NORTH COURTYARD RENDERING

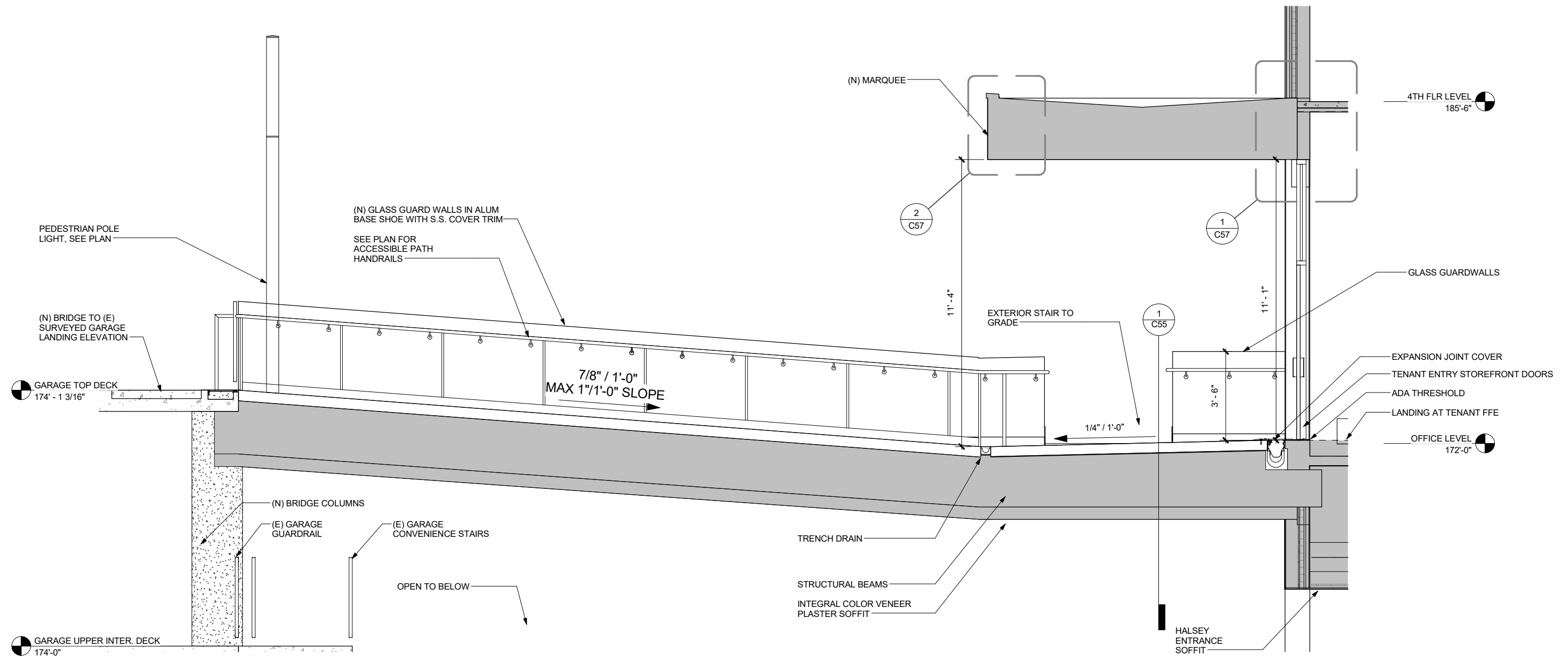
OCTOBER 18, 2018



waterleaf
architecture, interiors + planning



AP44



1 GARAGE BRIDGE SECTION
1/4" = 1'-0"



LLOYD CENTER - WEST ANCHOR RENOVATION

DESIGN REVIEW LU 18-198469 DZM

SOUTH PLAZA AERIAL RENDERING

OCTOBER 18, 2018



waterleaf
architecture, interiors + planning



AP29



LLOYD CENTER - WEST ANCHOR RENOVATION

DESIGN REVIEW LU 18-198469 DZM

SOUTH PLAZA RENDERING

OCTOBER 18, 2018



waterleaf
architecture, interiors + planning



AP35



LLOYD CENTER - WEST ANCHOR RENOVATION

DESIGN REVIEW LU 18-198469 DZM

SOUTH PLAZA RENDERING

OCTOBER 18, 2018



waterleaf
architecture, interiors + planning



AP36



LLOYD CENTER - WEST ANCHOR RENOVATION

DESIGN REVIEW LU 18-198469 DZM

SOUTH PLAZA RENDERING

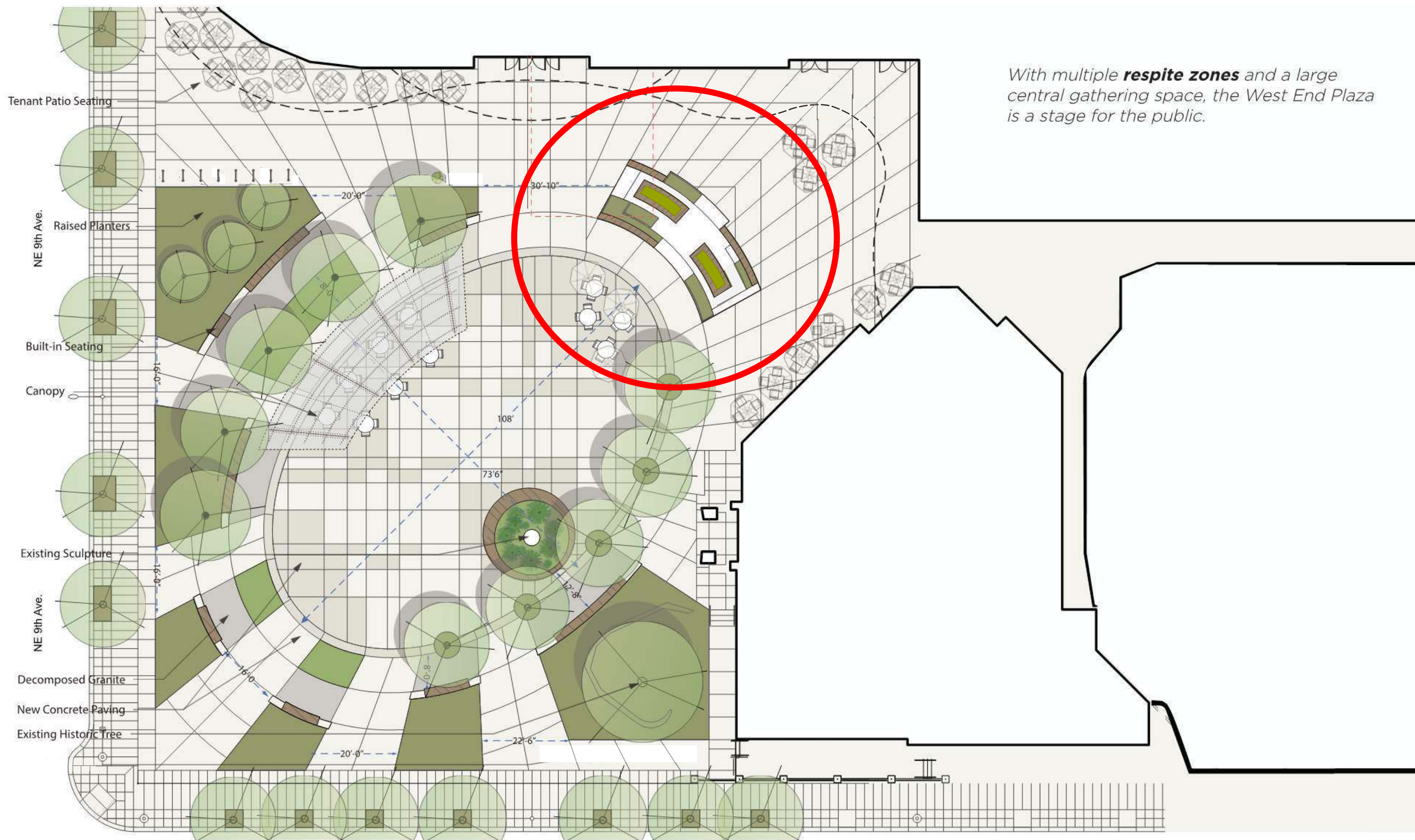
OCTOBER 18, 2018



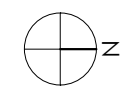
waterleaf
architecture, interiors + planning



AP37

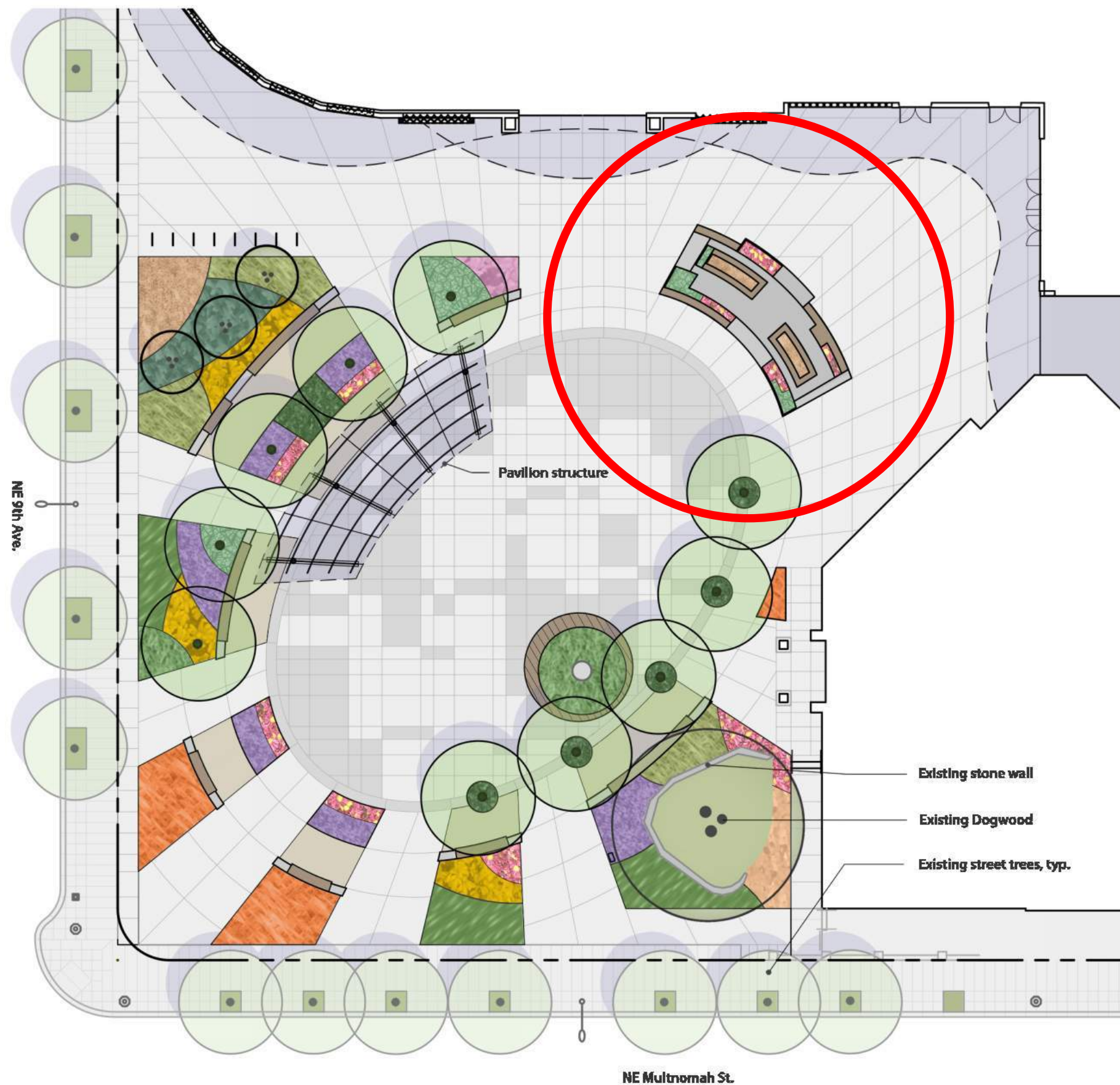


With multiple **respite zones** and a large central gathering space, the West End Plaza is a stage for the public.



scale: 1" = 20'-0"





	BOTANICAL NAME	COMMON NAME
<u>TREE</u>		
	<i>Gleditsia triacanthos</i> 'Shademaster'	Honey Locust 'Shademaster'
	<i>Acer palmatum</i> 'Osakazuki'	Osakazuki Upright Japanese Maple
<u>SHRUBS</u>		
	<i>Hydrangea quercifolia</i> 'Sike's Dwarf'	'Sike's Dwarf' Oakleaf Hydrangea
	<i>Viburnum opulus</i> 'Nanum'	Dwarf Cranberry Bush
<u>Grasses/ Perennials/ Groundcovers</u>		
	<i>Anemanthele lessoniana</i>	Pheasant's Tail Grass
	<i>Calamagrostis x acutiflora</i>	'Karl Foerster' Feather Reed Grass
	<i>Carex comans</i> 'Frosted Curls'	New Zealand Hair Sedge
	<i>Carex oshimensis</i> 'Evergold'	'Evergold' Japanese Sedge
	<i>Echinacea purpurea</i>	Purple Coneflower
	<i>Lavandula angustifolia</i> 'Hidcote'	'Hidcote' English Lavender
	<i>Liriope muscari</i> 'Love Potion #13'	Emerald Goddess Lilyturf
	<i>Pennisetum alopecuroides</i> 'Cassian'	'Cassian' Fountain Grass
	<i>Rudbeckia fulgida</i> 'Goldsturm'	Goldsturm Black-Eyed Susan
	<i>Trachelospermum jasminoides</i>	Star Jasmine
	Seasonal Color (Annuals)	

Planting Concept - South Plaza



0' 20' 40'

GREENWORKS



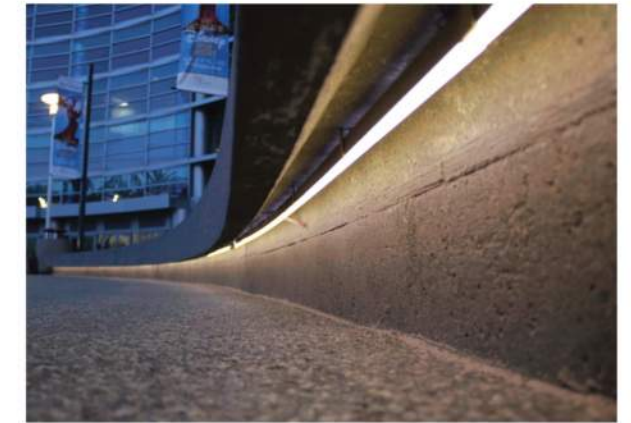
CONTINUOUS LED CHANNEL IN PERIMETER CANOPY



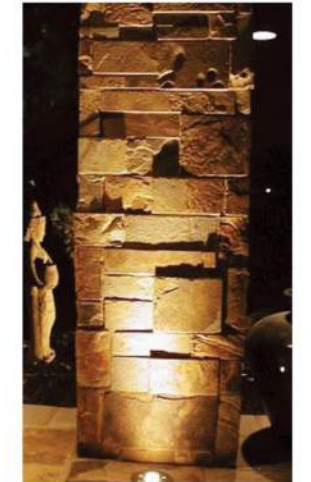
COLUMN MOUNT CANOPY UPLIGHT



LIGHT POLES HIGHLIGHT MAJOR SITE AXIS



CONTINUOUS ACCENT LIGHT AT SEATWALLS/BENCHES



INGRADE ACCENT AT STACKED COIN SCULPTURE



UPLIGHT TREES AROUND ELLIPSE

LIGHTING CONCEPTS
Lloyd Center West Anchor
16-1736.00 | 2018.10.05 | 1

LUMA
LIGHTING
DESIGN
www.lumald.com



LLOYD CENTER - WEST ANCHOR RENOVATION

DESIGN REVIEW LU 18-198469 DZM

SOUTH PLAZA LIGHTING CONCEPTS

OCTOBER 18, 2018



waterleaf
architecture, interiors + planning



AP25



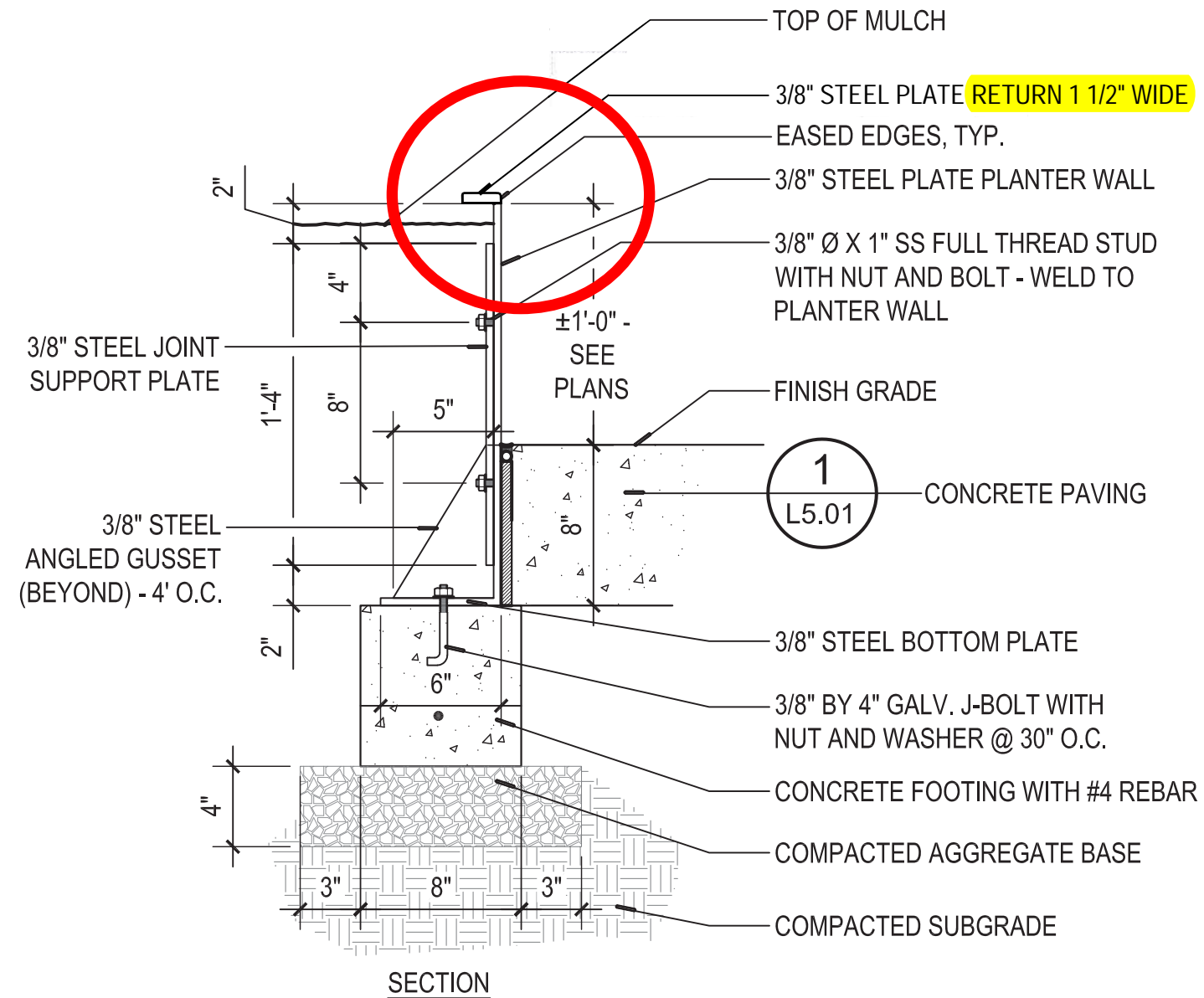
9/27/18 LANDSCAPE CONCEPT PLAN

NE Multnomah St.



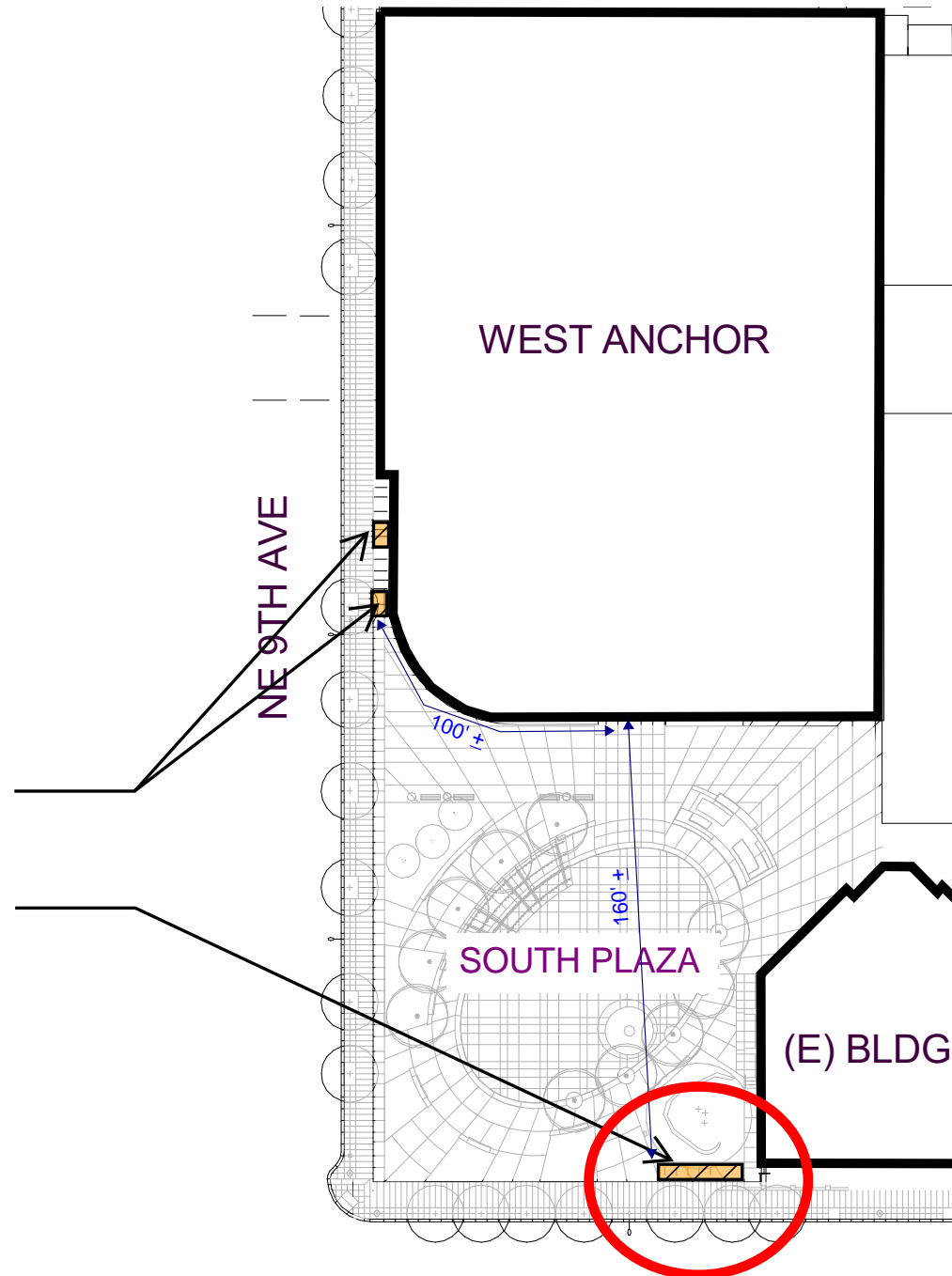
10/18/18 LANDSCAPE CONCEPT PLAN

NE Multnomah St.



Short Term Stalls:
Proposed: 4 stalls

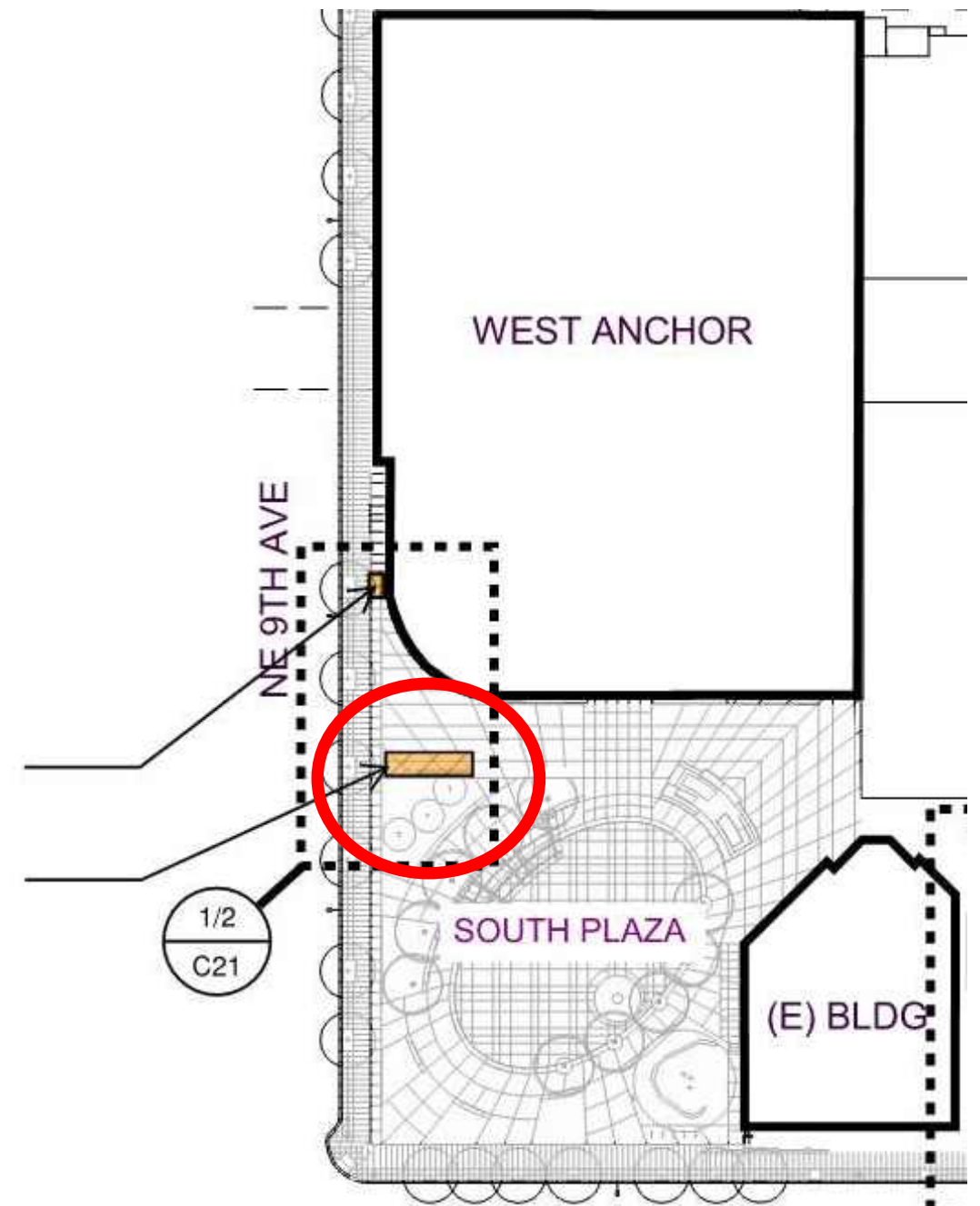
Short Term Stalls:
Proposed: 14 stalls



9/27/18 BIKE PARKING PLAN

Short Term Stalls:
Proposed: 2 stalls

Short Term Stalls:
Proposed: 16 stalls



10/18/18 BIKE PARKING PLAN



LLOYD CENTER - WEST ANCHOR RENOVATION

DESIGN REVIEW LU 18-198469 DZM

SOUTH PLAZA RENDERING

OCTOBER 18, 2018

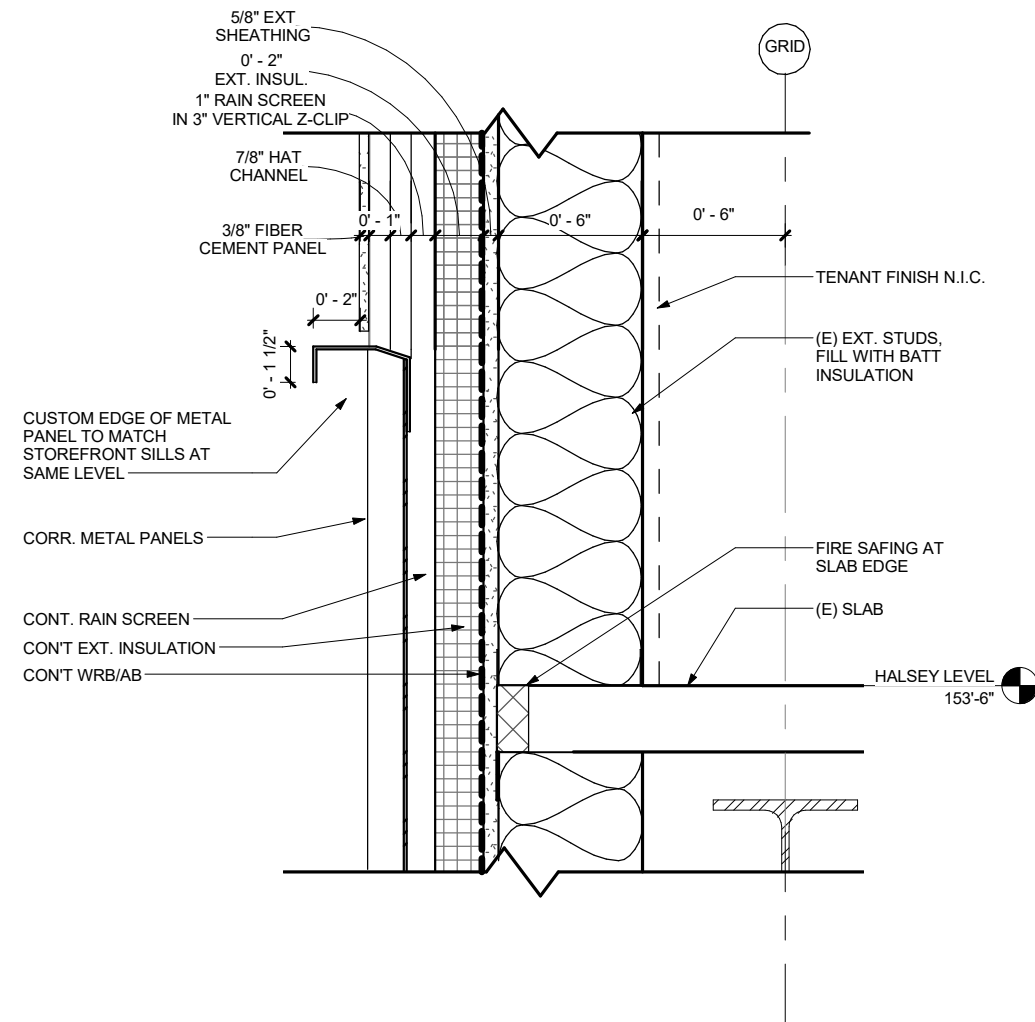


waterleaf
architecture, interiors + planning

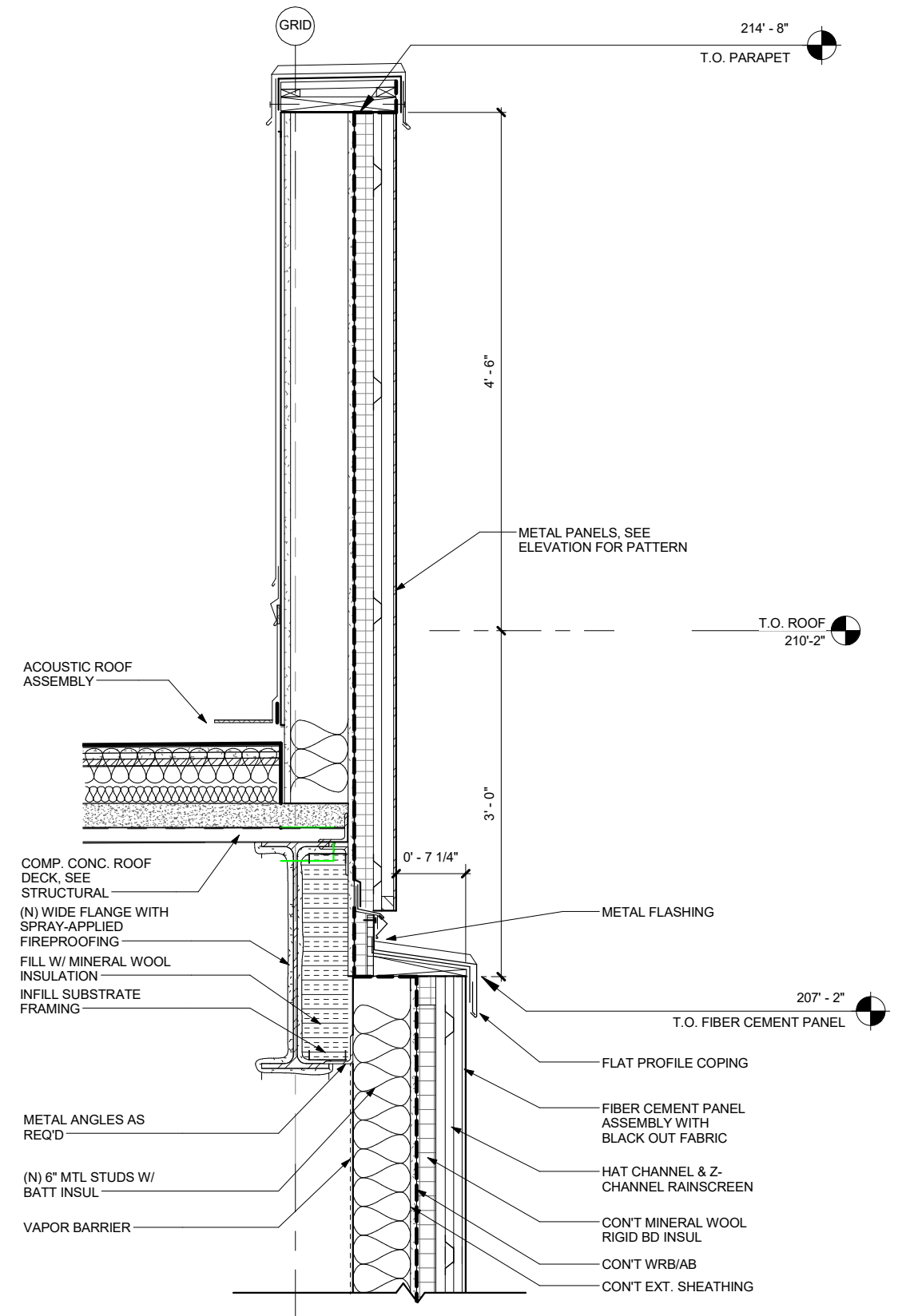


AP40

BACKUP
PARAPET / SCREEN



① MATERIAL TRANSITION - METAL PANEL TO FIBER CEMENT
1 1/2" = 1'-0"



② WALL SECTION - PARAPET DETAIL
3/4" = 1'-0"

BR	BRICK
CW	CURTAIN WALL
FC	FIBER CEMENT PANEL
MT	METAL
MP	METAL PANEL
PT	PORCELAIN TILE
SF	STOREFRONT
SPG	SPANDREL GLASS
ST	STUCCO
///	VISION GLAZING

Architectural elevation drawing of Block A, showing various levels, materials, and structural details. The drawing includes the following elements:

- Levels and Elevation Markers (Left Side):**
 - T.O. UPPER ROOF: 87' - 8"
 - T.O. UPPER PARAPET: 79' - 0"
 - T.O. MAIN ROOF: 74' - 8"
 - T.O. LOWER PARAPET: 71' - 9"
 - T.O. LOWER ROOF: 67' - 2"
 - 4TH FLOOR LEVEL: 50' - 6"
 - OFFICE LEVEL: 36' - 6"
 - HALSEY LEVEL: 18' - 0"
 - NE 9TH AVENUE: 0' - 6"
 - MULTNOMAH LEVEL: 0' - 0"
- Structural and Material Callouts:**
 - FC (Facing Concrete)
 - SF (Structural Formwork)
 - MP (Metal Panel)
 - CW (Concrete Wall)
 - SPG (Structural Panel Group)
 - MT (Metal Trim)
 - BR (Brick)
 - PT (Paving/Trim)
 - 1 C39 (Circular marker)
 - 1 C51 (Circular marker)
- Annotations and Notes:**
 - ELEVATED ROOF STRUCTURE BEYOND
 - PANELS TO BE FACTORY CUT
 - PANELS AROUND WINDOWS TO BE FIELD CUT AS NECESSARY
 - (N) UPPER CANOPY
 - (N) PRIMARY CANOPY
- Other Labels:**
 - BLOCK A

C34

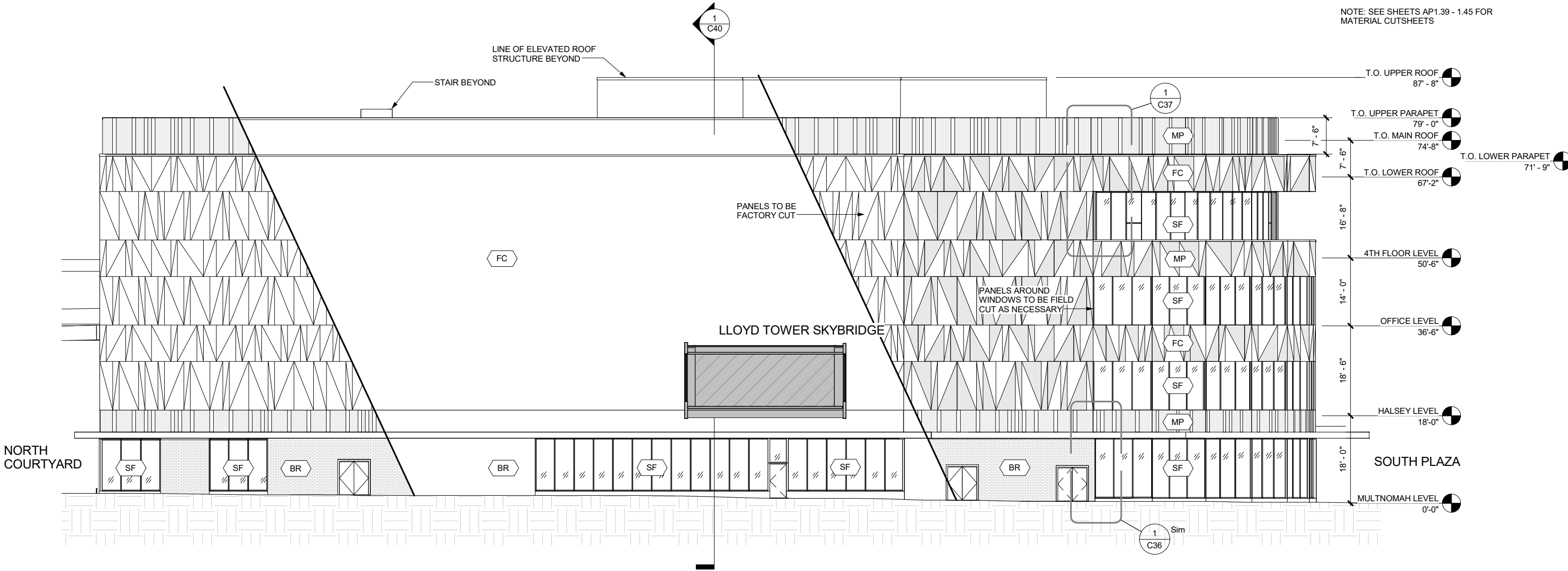
GENERAL NOTES:

1. WEST FACADE WINDOW TO
WALL RATIO = 54%
TOTAL WALL AREA 3000 SF
TOTAL WINDOW AREA 1608 SF

ABBREVIATIONS & SYMBOLS

BR	BRICK
CW	CURTAIN WALL
FC	FIBER CEMENT PANEL
MT	METAL
MP	METAL PANEL
PT	PORCELAIN TILE
SF	STOREFRONT
SPG	SPANDREL GLASS
ST	STUCCO
//	VISION GLAZING

NOTE: SEE SHEETS AP1.39 - 1.45 FOR
MATERIAL CUTSHEETS



1 WEST - BLOCK W
1" = 20'-0"



9/27/18 NORTH ENTRY RENDERING



10/18/18 NORTH ENTRY RENDERING

REDUCED PARAPET BY 1/3rd

Exposed panel before: 11'-4"

Exposed panel after: 7'-8"



LLOYD CENTER - WEST ANCHOR RENOVATION

DESIGN REVIEW LU 18-198469 DZM

NORTHWEST FACADE RENDERING

OCTOBER 18, 2018



waterleaf
architecture, interiors + planning



AP46



LLOYD CENTER - WEST ANCHOR RENOVATION

DESIGN REVIEW LU 18-198469 DZM

NORTH COURTYARD RENDERING

OCTOBER 18, 2018



waterleaf
architecture, interiors + planning



AP43



LLOYD CENTER - WEST ANCHOR RENOVATION

DESIGN REVIEW LU 18-198469 DZM

NORTH ENTRY RENDERING

OCTOBER 18, 2018



waterleaf
architecture, interiors + planning



AP41



VIEW FROM WEST SIDE OF NE NINTH



VIEW FROM NORTH SIDE OF PARKING DECK

LLOYD CENTER - WEST ANCHOR RENOVATION

DESIGN REVIEW LU 18-198469 DZM

NORTH ENTRY RENDERING

OCTOBER 18, 2018

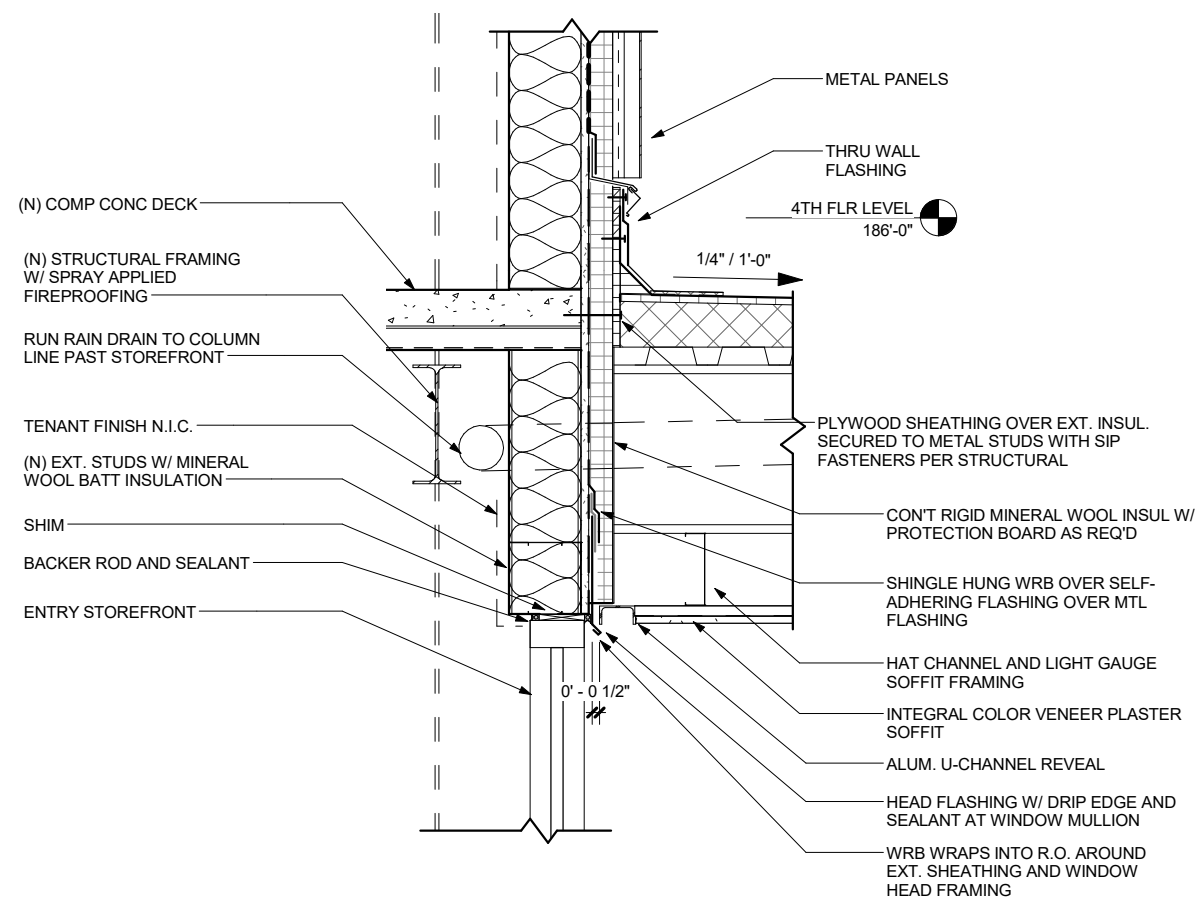


waterleaf
architecture, interiors + planning

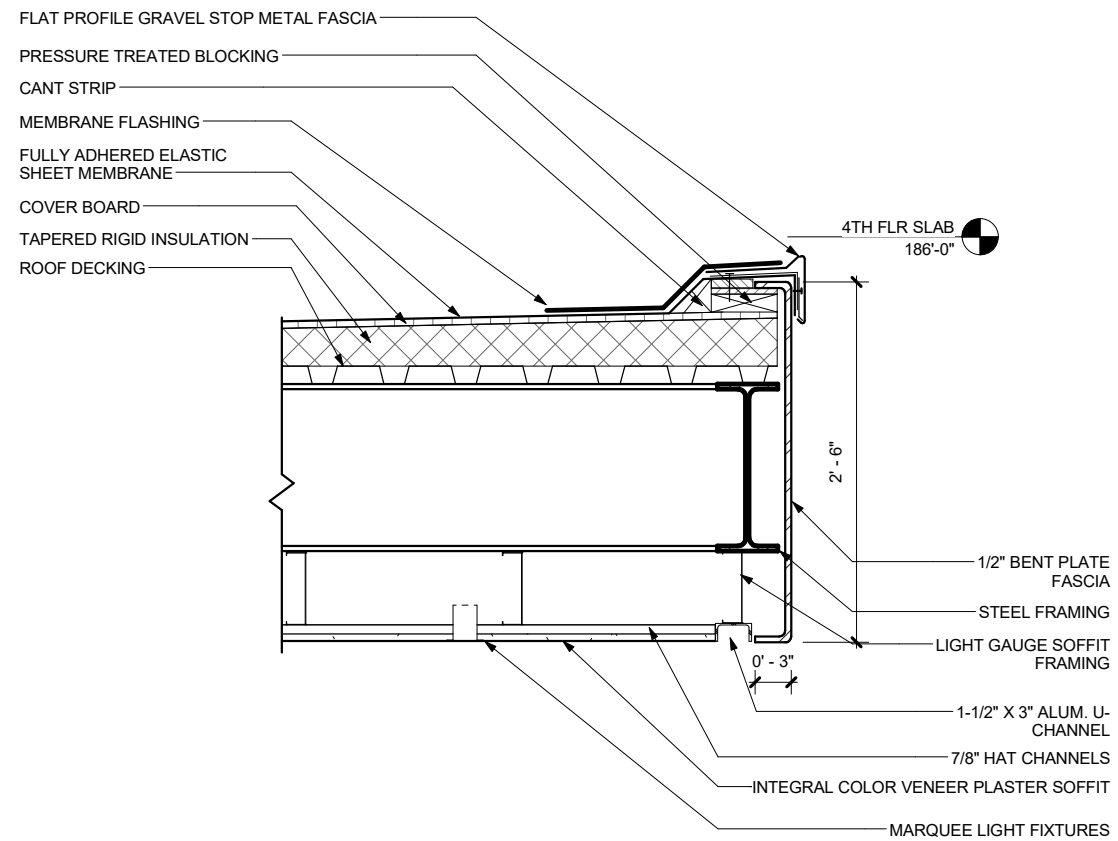


AP42

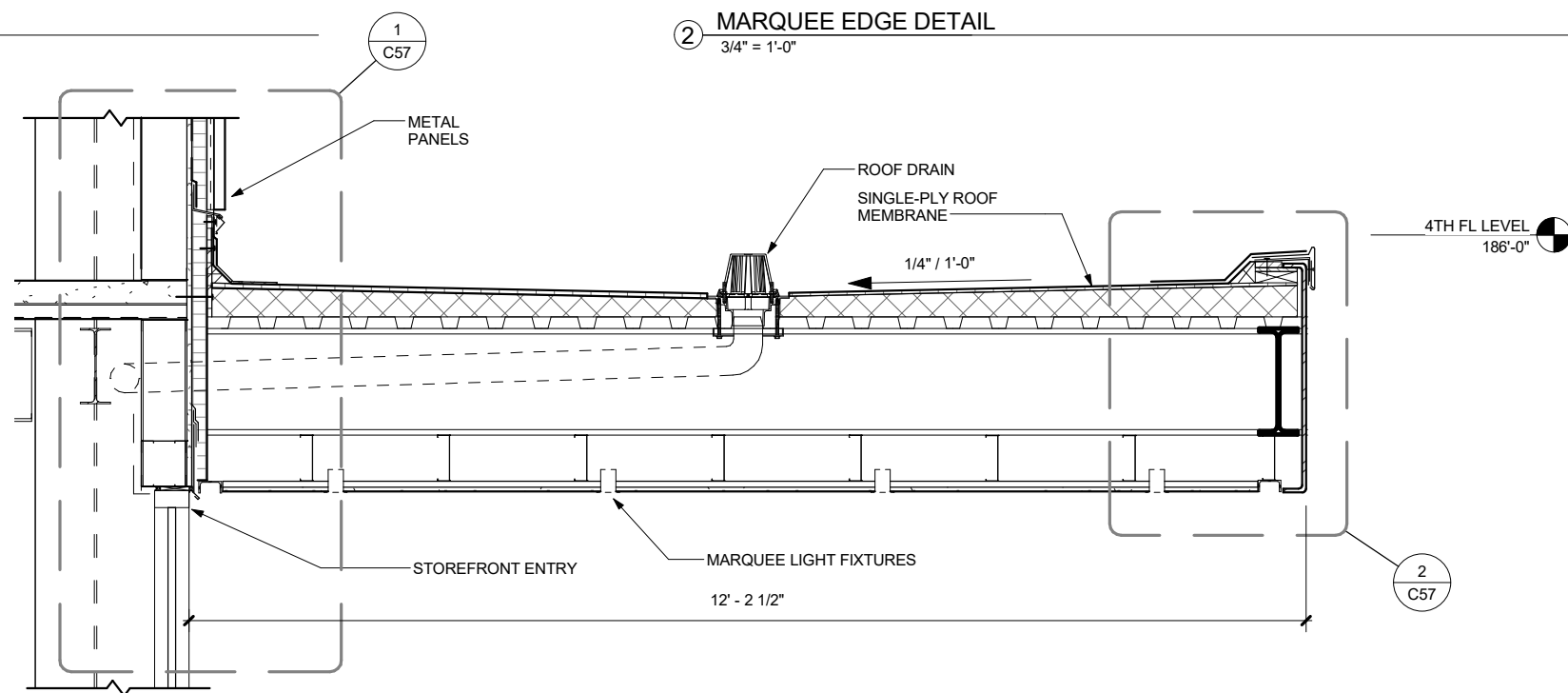
BACKUP
MARQUEE



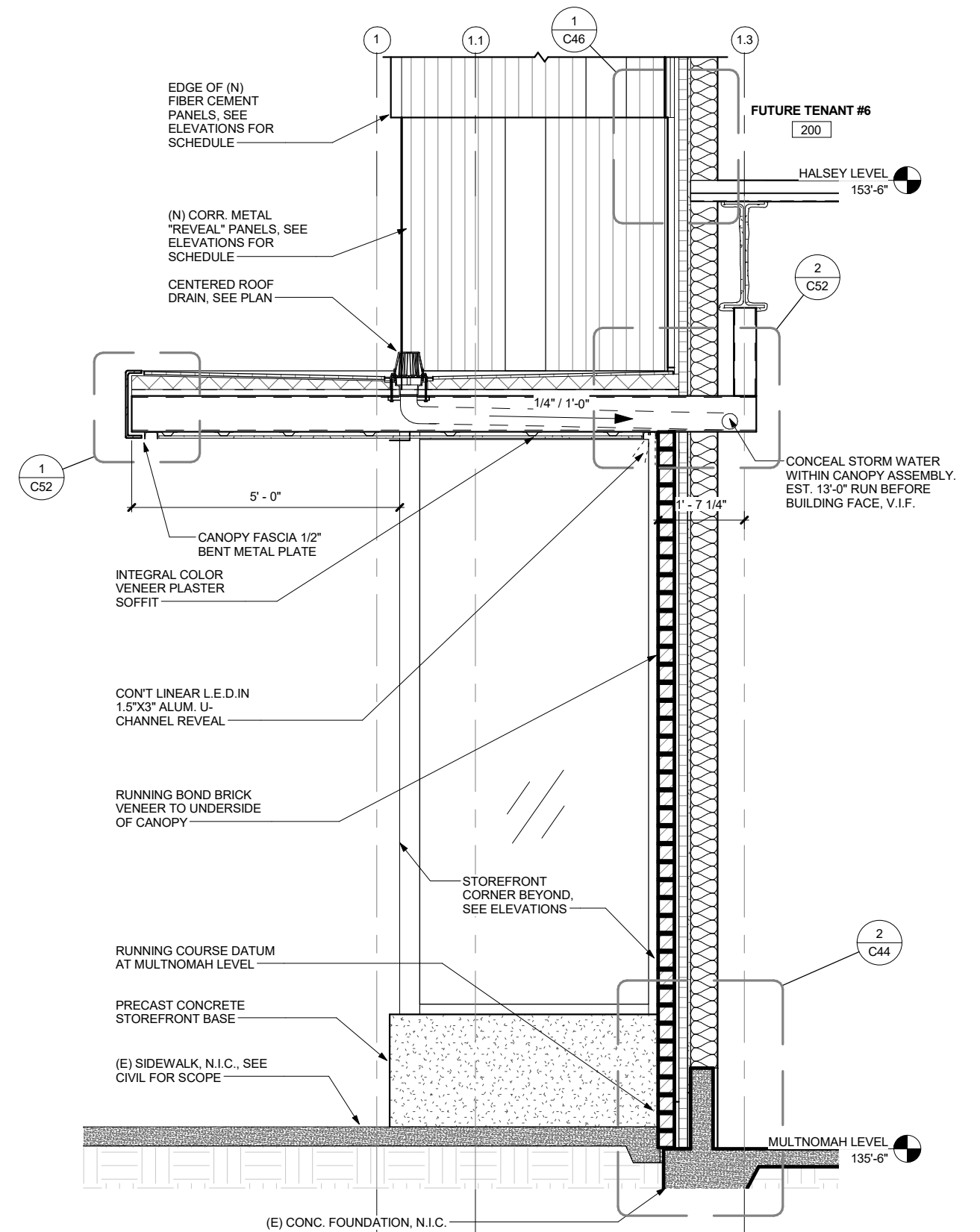
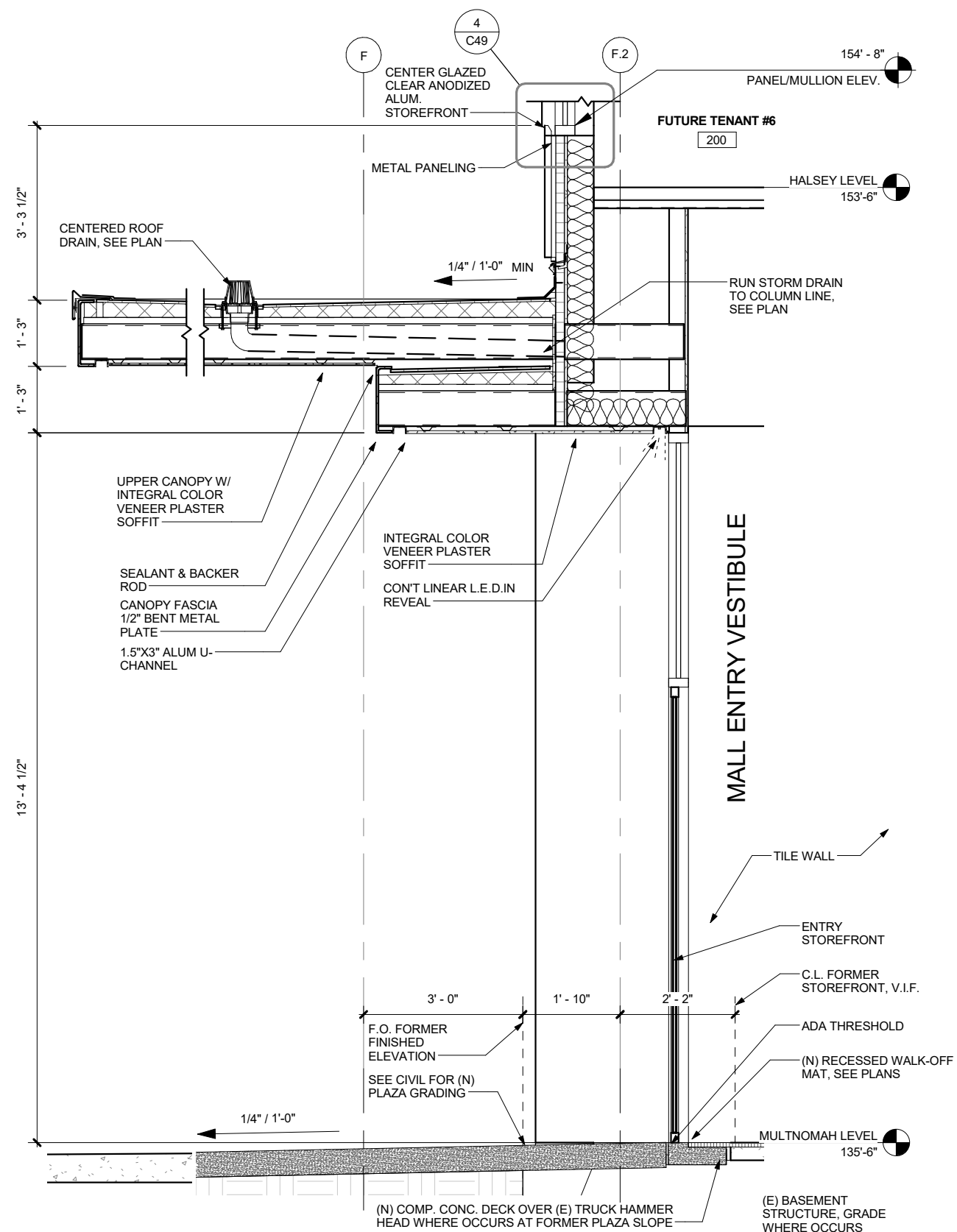
① MARQUEE @ SLAB CONNECTION DETAIL
3/4" = 1'-0"

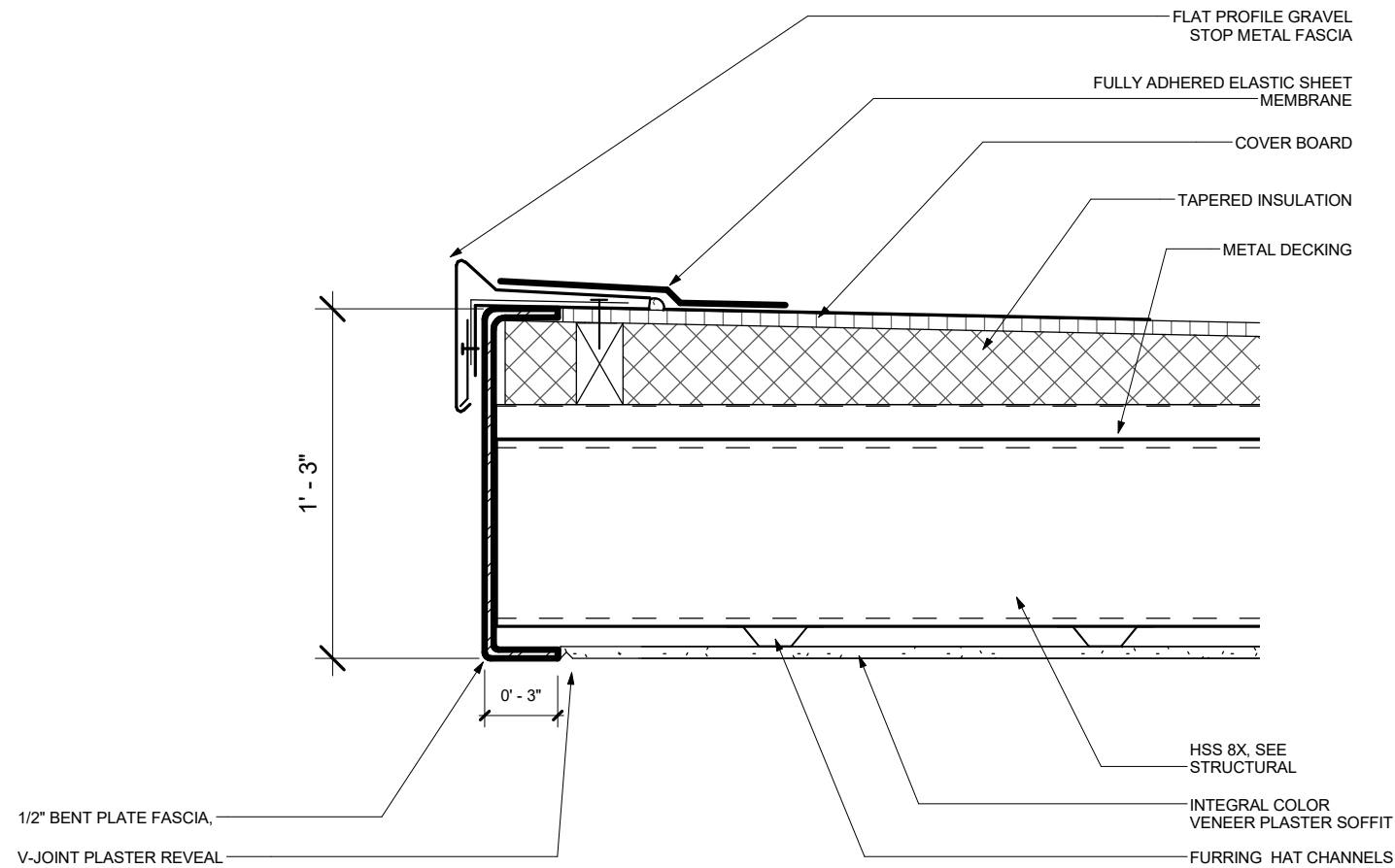


② MARQUEE EDGE DETAIL
3/4" = 1'-0"

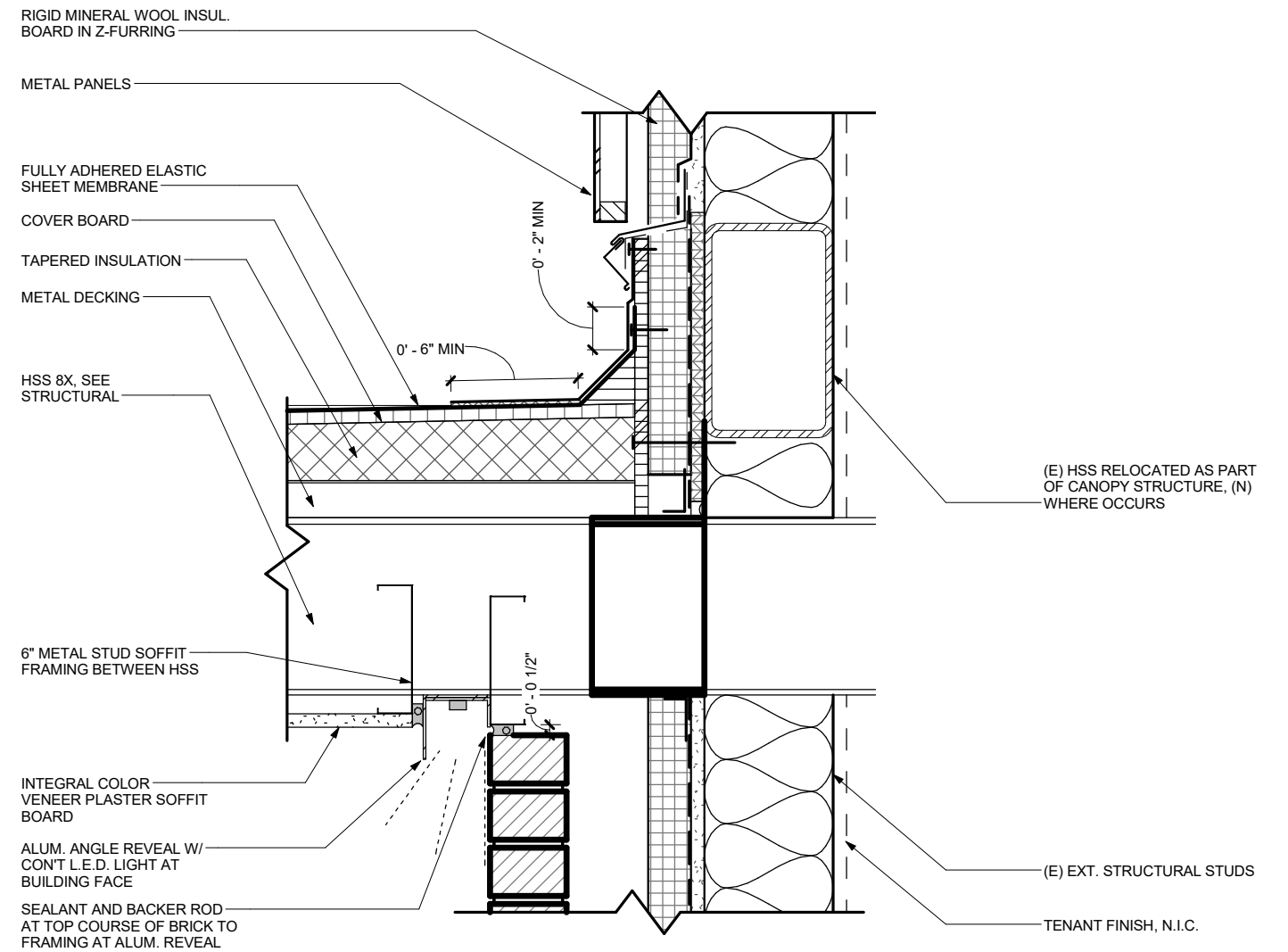


③ MARQUEE SECTION
1/2" = 1'-0"





① CANOPY EDGE
1 1/2" = 1'-0"



② CANOPY FLASHING AT WALL
1 1/2" = 1'-0"



LLOYD CENTER - WEST ANCHOR RENOVATION

DESIGN REVIEW LU 18-198469 DZM

NORTH ENTRY RENDERING

OCTOBER 18, 2018



waterleaf
architecture, interiors + planning



AP42

BACKUP TERMINUS

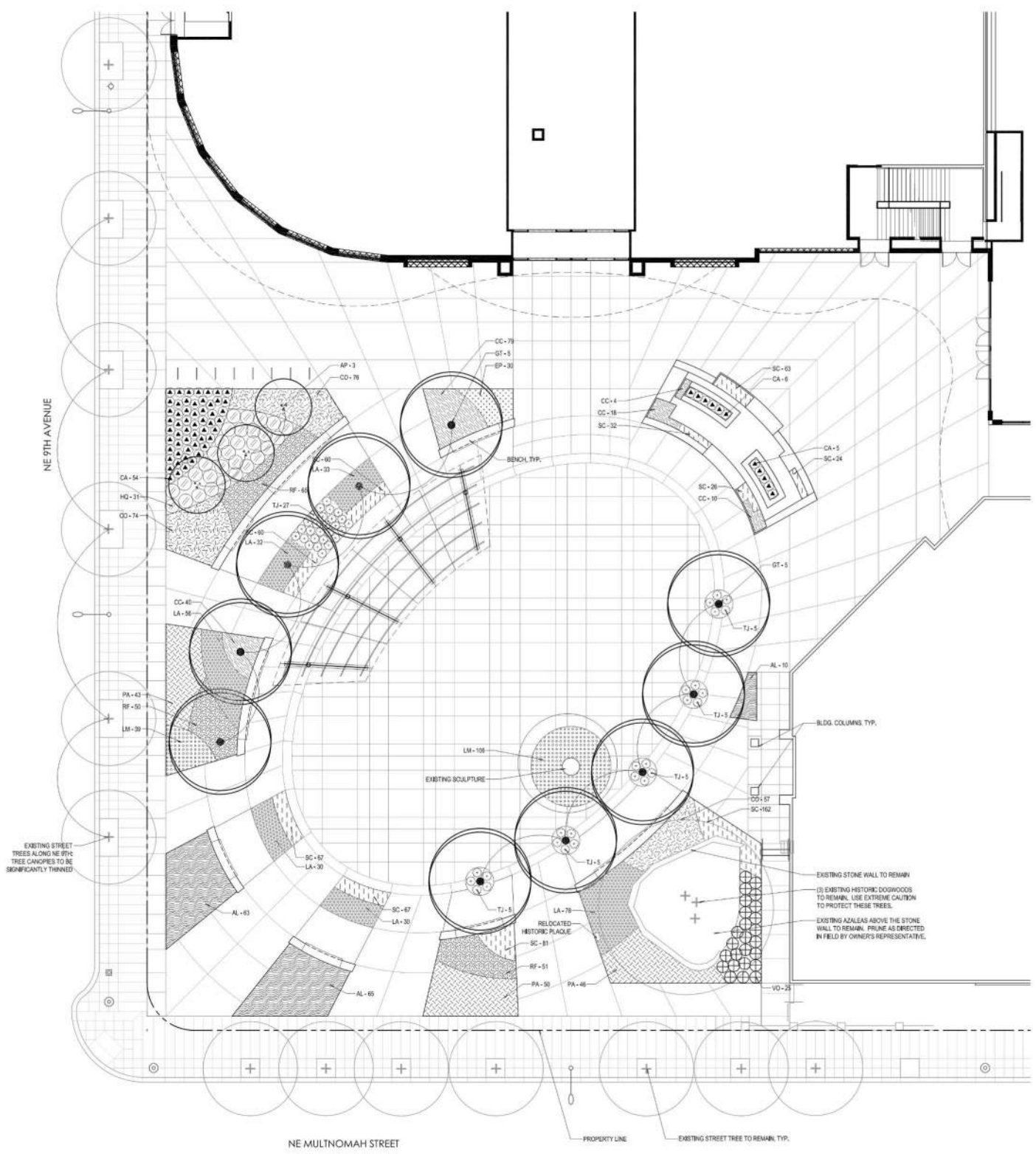


PLANTING NOTES

1. CONTRACTOR SHALL PROVIDE PLANTING SOIL, SOIL AMENDMENTS, AND BARK MULCH TO THE COMPOSITION AND DEPTHS IN ACCORDANCE WITH THE DRAWINGS AND SPECIFICATIONS OF THE CONTRACT DOCUMENTS.
2. ALL PLANTS SHALL BE INSTALLED IN ACCORDANCE WITH THE DRAWINGS AND THE SPECIFICATIONS PROVIDED AS PART OF THE CONTRACT DOCUMENTS.
3. QUANTITIES ARE LISTED FOR THE CONTRACTOR'S CONVENIENCE ONLY. ALL COUNTS MUST BE VERIFIED BY THE CONTRACTOR. IN THE CASE OF A DISCREPANCY BETWEEN THE LEGEND AND THE PLAN, PLANTS INDICATED ON THE PLAN SHALL SUPERCEDE QUANTITIES LISTED IN THE LEGEND. THE CONTRACTOR SHALL BE RESPONSIBLE FOR FINAL PLANT COUNTS, QUANTITIES AND AREA CALCULATIONS.
4. UTILITY LOCATIONS SHOWN ON PLANS MAY DIFFER FROM FIELD CONDITIONS. CONTRACTOR TO FIELD VERIFY ALL UTILITIES BEFORE INSTALLATION. CONFLICTS BETWEEN ANY EXISTING AND PROPOSED UTILITIES ARE TO BE BROUGHT TO THE ATTENTION OF THE OWNER'S REPRESENTATIVE IMMEDIATELY.
5. ALL PLANTING AREAS TO BE IRRIGATED, SEE L4.01 AND L4.02 FOR IRRIGATION PLANS.

PLANT LEGEND

TREES				1
KEY	QTY.	QTY.	QTY.	L4.02
AP	8	ACER PALMISTUM 'OSAKAZUMI'	CRANAPLE UPRIGHT JAPANESE MAPLE	B&B, 10'-12' HT.
GT	10	GLEDETIA TRICANTHOS F. INERMIS SHADEMASTER	SHADEMASTER THORNLESS HONEY LOCUST	B&B, 3.5' CAL.
PP	1	PAPYRUS PERSEICA 'ULCULMARI'	PERSEAN SPICE PARROTIA	B&B, 2.5' CAL.
SHRUBS				2,3
KEY	QTY.	QTY.	QTY.	L4.02
FJ	8	FATSIA JAPONICA	JAPANESE ARALIA	5 GAL., SPACING AS SHOWN
HO	44	HYDRANGEA QUERCIFOLIA 'SIRE'S DWAMP'	SIRE'S DWAMP OAKLEAF HYDRANGEA	2 GAL., 30" O.C.
VO	25	VIBURNUM OPULUS 'NANUM'	DWARF CRANBERRY BUSH	2 GAL., 30" O.C.
PERENNIALS, GROUNDCOVERS, GRASSES				2,3
KEY	QTY.	QTY.	QTY.	L4.02
AG	270	ACORUS GRAMINEUS 'OSOGY'	GOLDEN VAREGATED SWEET FLAG	4" POT, 8" O.C.
AL	128	ANEMONE 'LESSONIANA'	PHILADELPHIA TALL GRASS	2 GAL., 24" O.C.
CA	78	CALAMAGROSTIS x AQUILEGIA 'HARL. FODERSTY'	FEATHER REED GRASS	2 GAL., 24" O.C. AND AS SHOWN
CC	148	CAREX COMANS 'FROSTED CURLS'	NEW ZEALAND HARP SEDGE	1 GAL., 15" O.C.
CO	207	CAREX OSHAMENSIS 'EVERGOLD'	VAREGATED SEDGE	1 GAL., 18" O.C.
DE	84	DIENOTIS ERYTHROSORA	AUTUMN FERN	1 GAL., 18" O.C.
EP	30	ECHINACEA PURPUREA	PURPLE CONEFLOWER	1 GAL., 18" O.C.
HM	17	HELIOPSIS x HYBRIDUS 'PERPETUIT ICE'	WINTER JEWEL x HELIOPSIS	1 GAL., 18" O.C.
HR	34	HELOPSIS 'RIP'	RED CORAL BELLS	1 GAL., 12" O.C.
HS	11	HOSTA 'SAGAE'	SAGAE HOSTA	1 GAL., SPACING AS SHOWN
LA	259	LAVANDULA ANGUSTIFOLIA 'HIDCOTE'	HIDCOTE ENGLISH LAVENDER	1 GAL., 18" O.C.
LM	153	LIRIOPE MACRAN 'LOVE JOYCE' #17	EMERALD GLOSSY LANTANA	1 GAL., 18" O.C.
PA	139	PENNISETUM ALOPECUROIDES 'CASSIN'	CASSIN FOUNTAIN GRASS	1 GAL., 24" O.C.
RF	186	RUDIBEONIA FULGIDA 'GOLDSTURM'	GOLDSTURM BLACK-EYED SUSAN	1 GAL., 18" O.C.
TJ	73	TRACHELOSPERMUM JASMINEOIDES 'MAISON'	MAISON STAR JASMINE	1 GAL., 24" O.C. AND AS SHOWN
ANNUALS				
KEY	QTY.	QTY.	QTY.	
SC	362	SEASONAL COLOR TO BE SELECTED AND INSTALLED BY	LLOYD CENTER MAINTENANCE STAFF	4" POT, 8" O.C.



waterleaf
architecture, interiors + planning
415 NW 11th Ave, Suite 100
Portland, OR 97201
Phone: 503.222.1111
Fax: 503.222.1111

505
DESIGN

GREENWORKS
GREENWORKS LLC
1100 SW 10th Ave, Suite 100
Portland, OR 97201

Lloyd Center West Anchor
Core and Shell Package
901 Lloyd Center
Portland, Oregon 97232

50%
CONSTRUCTION
DOCUMENTS
Project #: 1410.36
Sheet Issue Date: Oct. 4, 2018
Revisions: 2, 3, 4, 5, 6, 7, 8, 9, 10, 11, 12, 13, 14, 15, 16, 17, 18, 19, 20, 21, 22, 23, 24, 25, 26, 27, 28, 29, 30, 31, 32, 33, 34, 35, 36, 37, 38, 39, 40, 41, 42, 43, 44, 45, 46, 47, 48, 49, 50, 51, 52, 53, 54, 55, 56, 57, 58, 59, 60, 61, 62, 63, 64, 65, 66, 67, 68, 69, 70, 71, 72, 73, 74, 75, 76, 77, 78, 79, 80, 81, 82, 83, 84, 85, 86, 87, 88, 89, 90, 91, 92, 93, 94, 95, 96, 97, 98, 99, 100, 101, 102, 103, 104, 105, 106, 107, 108, 109, 110, 111, 112, 113, 114, 115, 116, 117, 118, 119, 120, 121, 122, 123, 124, 125, 126, 127, 128, 129, 130, 131, 132, 133, 134, 135, 136, 137, 138, 139, 140, 141, 142, 143, 144, 145, 146, 147, 148, 149, 150, 151, 152, 153, 154, 155, 156, 157, 158, 159, 160, 161, 162, 163, 164, 165, 166, 167, 168, 169, 170, 171, 172, 173, 174, 175, 176, 177, 178, 179, 180, 181, 182, 183, 184, 185, 186, 187, 188, 189, 190, 191, 192, 193, 194, 195, 196, 197, 198, 199, 200, 201, 202, 203, 204, 205, 206, 207, 208, 209, 210, 211, 212, 213, 214, 215, 216, 217, 218, 219, 220, 221, 222, 223, 224, 225, 226, 227, 228, 229, 230, 231, 232, 233, 234, 235, 236, 237, 238, 239, 240, 241, 242, 243, 244, 245, 246, 247, 248, 249, 250, 251, 252, 253, 254, 255, 256, 257, 258, 259, 260, 261, 262, 263, 264, 265, 266, 267, 268, 269, 270, 271, 272, 273, 274, 275, 276, 277, 278, 279, 280, 281, 282, 283, 284, 285, 286, 287, 288, 289, 290, 291, 292, 293, 294, 295, 296, 297, 298, 299, 300, 301, 302, 303, 304, 305, 306, 307, 308, 309, 310, 311, 312, 313, 314, 315, 316, 317, 318, 319, 320, 321, 322, 323, 324, 325, 326, 327, 328, 329, 330, 331, 332, 333, 334, 335, 336, 337, 338, 339, 340, 341, 342, 343, 344, 345, 346, 347, 348, 349, 350, 351, 352, 353, 354, 355, 356, 357, 358, 359, 360, 361, 362, 363, 364, 365, 366, 367, 368, 369, 370, 371, 372, 373, 374, 375, 376, 377, 378, 379, 380, 381, 382, 383, 384, 385, 386, 387, 388, 389, 390, 391, 392, 393, 394, 395, 396, 397, 398, 399, 400, 401, 402, 403, 404, 405, 406, 407, 408, 409, 410, 411, 412, 413, 414, 415, 416, 417, 418, 419, 420, 421, 422, 423, 424, 425, 426, 427, 428, 429, 430, 431, 432, 433, 434, 435, 436, 437, 438, 439, 440, 441, 442, 443, 444, 445, 446, 447, 448, 449, 450, 451, 452, 453, 454, 455, 456, 457, 458, 459, 460, 461, 462, 463, 464, 465, 466, 467, 468, 469, 470, 471, 472, 473, 474, 475, 476, 477, 478, 479, 480, 481, 482, 483, 484, 485, 486, 487, 488, 489, 490, 491, 492, 493, 494, 495, 496, 497, 498, 499, 500, 501, 502, 503, 504, 505, 506, 507, 508, 509, 510, 511, 512, 513, 514, 515, 516, 517, 518, 519, 520, 521, 522, 523, 524, 525, 526, 527, 528, 529, 530, 531, 532, 533, 534, 535, 536, 537, 538, 539, 540, 541, 542, 543, 544, 545, 546, 547, 548, 549, 550, 551, 552, 553, 554, 555, 556, 557, 558, 559, 560, 561, 562, 563, 564, 565, 566, 567, 568, 569, 570, 571, 572, 573, 574, 575, 576, 577, 578, 579, 580, 581, 582, 583, 584, 585, 586, 587, 588, 589, 590, 591, 592, 593, 594, 595, 596, 597, 598, 599, 600, 601, 602, 603, 604, 605, 606, 607, 608, 609, 610, 611, 612, 613, 614, 615, 616, 617, 618, 619, 620, 621, 622, 623, 624, 625, 626, 627, 628, 629, 630, 631, 632, 633, 634, 635, 636, 637, 638, 639, 640, 641, 642, 643, 644, 645, 646, 647, 648, 649, 650, 651, 652, 653, 654, 655, 656, 657, 658, 659, 660, 661, 662, 663, 664, 665, 666, 667, 668, 669, 670, 671, 672, 673, 674, 675, 676, 677, 678, 679, 680, 681, 682, 683, 684, 685, 686, 687, 688, 689, 690, 691, 692, 693, 694, 695, 696, 697, 698, 699, 700, 701, 702, 703, 704, 705, 706, 707, 708, 709, 710, 711, 712, 713, 714, 715, 716, 717, 718, 719, 720, 721, 722, 723, 724, 725, 726, 727, 728, 729, 730, 731, 732, 733, 734, 735, 736, 737, 738, 739, 740, 741, 742, 743, 744, 745, 746, 747, 748, 749, 750, 751, 752, 753, 754, 755, 756, 757, 758, 759, 760, 761, 762, 763, 764, 765, 766, 767, 768, 769, 770, 771, 772, 773, 774, 775, 776, 777, 778, 779, 780, 781, 782, 783, 784, 785, 786, 787, 788, 789, 790, 791, 792, 793, 794, 795, 796, 797, 798, 799, 800, 801, 802, 803, 804, 805, 806, 807, 808, 809, 810, 811, 812, 813, 814, 815, 816, 817, 818, 819, 820, 821, 822, 823, 824, 825, 826, 827, 828, 829, 830, 831, 832, 833, 834, 835, 836, 837, 838, 839, 840, 841, 842, 843, 844, 845, 846, 847, 848, 849, 850, 851, 852, 853, 854, 855, 856, 857, 858, 859, 860, 861, 862, 863, 864, 865, 866, 867, 868, 869, 870, 871, 872, 873, 874, 875, 876, 877, 878, 879, 880, 881, 882, 883, 884, 885, 886, 887, 888, 889, 890, 891, 892, 893, 894, 895, 896, 897, 898, 899, 900, 901, 902, 903, 904, 905, 906, 907, 908, 909, 910, 911, 912, 913, 914, 915, 916, 917, 918, 919, 920, 921, 922, 923, 924, 925, 926, 927, 928, 929, 930, 931, 932, 933, 934, 935, 936, 937, 938, 939, 940, 941, 942, 943, 944, 945, 946, 947, 948, 949, 950, 951, 952, 953, 954, 955, 956, 957, 958, 959, 960, 961, 962, 963, 964, 965, 966, 967, 968, 969, 970, 971, 972, 973, 974, 975, 976, 977, 978, 979, 980, 981, 982, 983, 984, 985, 986, 987, 988, 989, 990, 991, 992, 993, 994, 995, 996, 997, 998, 999, 1000

PLANTING PLAN -
SOUTH PLAZA
L4.01



Lloyd Center - West Anchor

Plaza terminus rendering draft

October 7, 2018

waterleaf
architecture, interiors + planning



AP36a



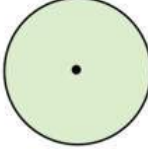












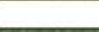
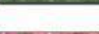
Lloyd Center - West Anchor

Plaza terminus rendering draft

October 7, 2018

BACKUP LANDSCAPE



BOTANICAL NAME		COMMON NAME
<u>TREE</u>		
	<i>Gleditsia triacanthos</i> 'Shademaster'	Honey Locust 'Shademaster'
	<i>Acer palmatum</i> 'Osakazuki'	Osakazuki Upright Japanese Maple
<u>SHRUBS</u>		
	<i>Hydrangea quercifolia</i> 'Sike's Dwarf'	'Sike's Dwarf' Oakleaf Hydrangea
	<i>Viburnum opulus</i> 'Nanum'	Dwarf Cranberry Bush
<u>Grasses/ Perennials/ Groundcovers</u>		
	<i>Anemanthele lessoniana</i>	Pheasant's Tail Grass
	<i>Calamagrostis x acutiflora</i>	'Karl Foerster' Feather Reed Grass
	<i>Carex comans</i> 'Frosted Curls'	New Zealand Hair Sedge
	<i>Carex oshimensis</i> 'Evergold'	'Evergold' Japanese Sedge
	<i>Echinacea purpurea</i>	Purple Coneflower
	<i>Lavandula angustifolia</i> 'Hidcote'	'Hidcote' English Lavender
	<i>Liriope muscari</i> 'Love Potion #13'	Emerald Goddess Lilyturf
	<i>Pennisetum alopecuroides</i> 'Cassian'	'Cassian' Fountain Grass
	<i>Rudbeckia fulgida</i> 'Goldsturm'	Goldsturm Black-Eyed Susan
	<i>Trachelospermum jasminoides</i>	Star Jasmine
	Seasonal Color (Annuals)	

Planting Concept - South Plaza



0' 20' 40'





Anemanthele lessoniana
Pheasant's Tail Grass

Pennisetum alopecuroides 'Cassian'
'Cassian' Fountain Grass

Gleditsia triacanthos 'Shademaster'
'Shademaster' Honey Locust

Trachelospermum
jasminoides
Star Jasmine

Rudbeckia fulgida 'Goldsturm'
Goldsturm Black-Eyed Susan



Lavandula angustifolia 'Hidcote'
'Hidcote' English Lavender

Plant Palette - South Plaza

LLOYD CENTER - WEST ANCHOR RENOVATION

DESIGN REVIEW LU 18-198469 DZM

SOUTH PLAZA PLANT PALETTE

OCTOBER 18, 2018



waterleaf
architecture, interiors + planning



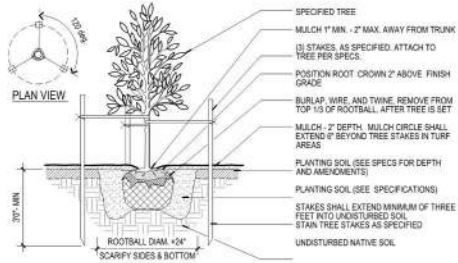
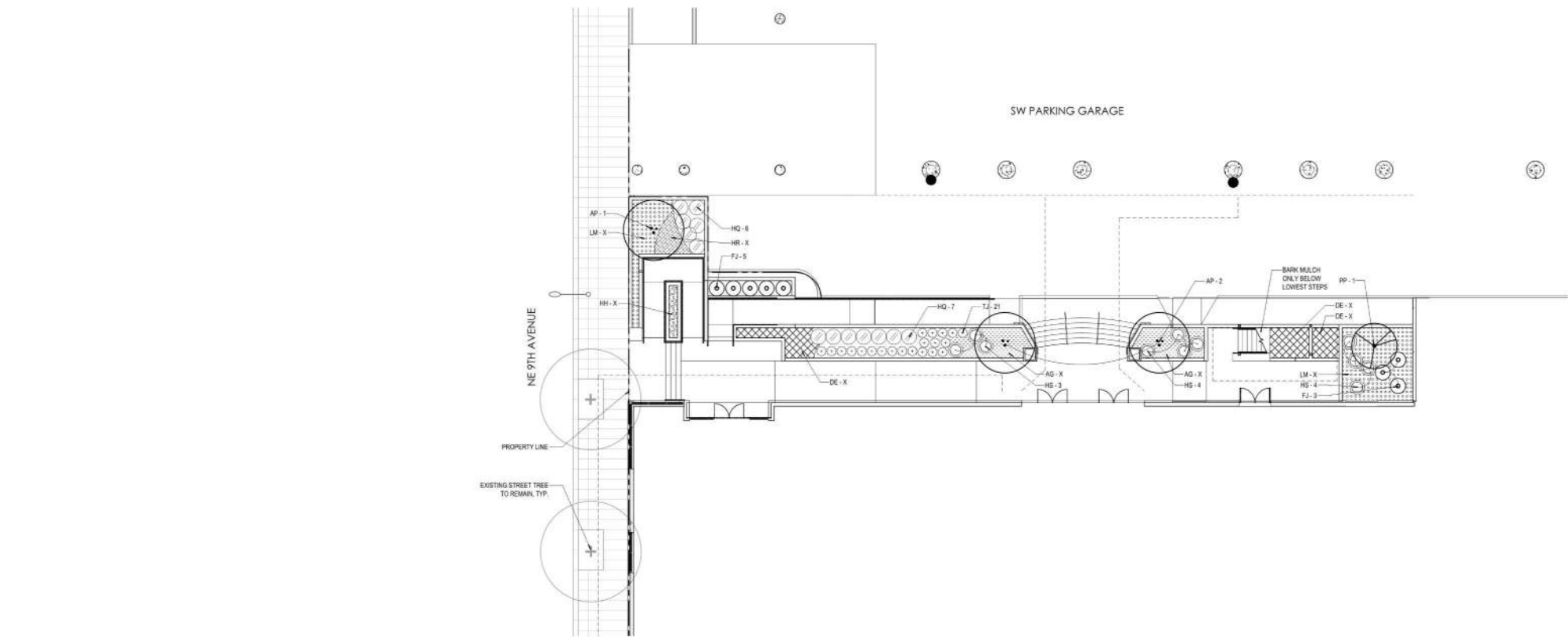
AP23

GREENWORKS

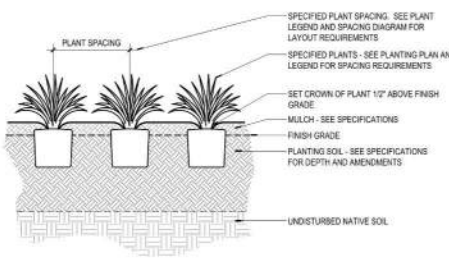


Plant Palette - South Plaza

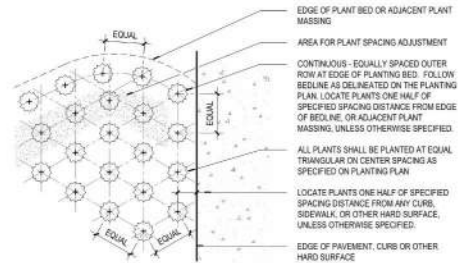
C:\Projects\115100\115100_Lloyd_Center_West_Anchor\04_Drawings\01_CAD\02_Plant_Sheets\115100_Plant.dwg 9/14/2018 2:30 PM



1 DECIDUOUS TREE PLANTING - STAKING



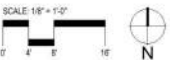
2 CONTAINER PLANTING



3 PLANT SPACING DIAGRAM

PLANT LEGEND			
TREES			
KEY	QTY	ACER PALMATUM 'OSAKAZUKI'	1
AP	X	OSAKAZUKI UPRIGHT JAPANESE MAPLE	L4.02
MULTI-TRUNK SPECIMEN, 3 CANES, 1.5\"/>			
KEY	QTY	OLEFOTIA THACANTHOS F. INERMIS 'SHADEMASTER'	1
GT	X	SHADEMASTER THORNLESS HONEY LOCUST	L4.02
B&B, 2.5\"/>			
KEY	QTY	PARROTIA PERSICA 'ALCOUMAR'	1
PP	1	PERSIAN SPICE PARROTIA	L4.02
B&B, 2.5\"/>			
SHRUBS			
KEY	QTY	FATSIA JAPONICA	2.3
FJ	X	JAPANESE ARALIA	L4.02
5 GAL., SPACING AS SHOWN			
KEY	QTY	HYDRANGEA QUERCIFOLIA 'SKE'S DWARF'	1
HQ	X	SKE'S DWARF OAKLEAF HYDRANGEA	L4.02
2 GAL., 36\"/>			
KEY	QTY	VIBURNUM OPULUS 'NANAM'	1
VO	X	DWARF CRANBERRY BUSH	L4.02
2 GAL., 36\"/>			
PERENNIALS, GROUNDCOVERS, GRASSES			
KEY	QTY	ACORUS GRAMMIS 'OGON'	2.3
AG	X	GOLDEN VAREGATED SHEET FLAG	L4.02
4\"/>			
KEY	QTY	ANEMONE F. LESSONIANA	1
AL	X	PHACELIANTHUS TALL GRASS	L4.02
2 GAL., 24\"/>			
KEY	QTY	CALAMAGROSTIS x ACUTIFLORA 'KARL EDERSTEIN'	1
CA	X	FEATHER REED GRASS	L4.02
2 GAL., 24\"/>			
KEY	QTY	CAREX COMANS 'FROSTED CURLS'	1
CC	X	NEW ZEALAND HAZEL	L4.02
1 GAL., 15\"/>			
KEY	QTY	CAREX OSHIMENSIS 'EVERGOLD'	1
CO	X	VAREGATED SEDGE	L4.02
1 GAL., 18\"/>			
KEY	QTY	DRYOPTERIS ERYTHROSTORA	1
DE	X	AUTUMN FERN	L4.02
1 GAL., 18\"/>			
KEY	QTY	ECHINACEA PURPUREA	1
EP	X	PURPLE CONEFLOWER	L4.02
1 GAL., 18\"/>			
KEY	QTY	HELLEBORUS x HYBRIDUS 'PEPPERMINT ICE'	1
HR	X	WINTER JEWELS HELLEBORE	L4.02
1 GAL., 18\"/>			
KEY	QTY	HEUCHERA 'RED CORAL BELLS'	1
HR	X	SAGAE HOSTA	L4.02
1 GAL., 12\"/>			
KEY	QTY	HOSTA 'SAGAE'	1
HS	X	SAGAE HOSTA	L4.02
1 GAL., SPACING AS SHOWN			
KEY	QTY	LAVANDULA ANGLUSTIFOLIA 'HIDCOTE'	1
LA	X	HIDCOTE ENGLISH LAVENDER	L4.02
1 GAL., 18\"/>			
KEY	QTY	LIROPE MUSCARI LOVE POTION #12	1
LM	X	EMERALD GLOSS LILY TURF	L4.02
1 GAL., 18\"/>			
KEY	QTY	PENNISETUM ALOPECUROIDES 'CASSIN'	1
PA	X	CASSIN FOUNTAIN GRASS	L4.02
1 GAL., 24\"/>			
KEY	QTY	RUBROCHLOA FULGIDA 'GOLDSTURM'	1
RF	X	GOLDSTURM BLACK-EYED SUSAN	L4.02
1 GAL., 18\"/>			
KEY	QTY	TRACHELOPERMUM JASMINE	1
TJ	X	MADISON STAR JASMINE	L4.02
1 GAL., 24\"/>			

- PLANTING NOTES**
- CONTRACTOR SHALL PROVIDE PLANTING SOIL, SOIL AMENDMENTS, AND BARK MULCH TO THE COMPOSITION AND DEPTHS IN ACCORDANCE WITH THE DRAWINGS AND SPECIFICATIONS OF THE CONTRACT DOCUMENTS.
 - ALL PLANTS SHALL BE INSTALLED IN ACCORDANCE WITH THE DRAWINGS AND THE SPECIFICATIONS PROVIDED AS PART OF THE CONTRACT DOCUMENTS.
 - QUANTITIES ARE LISTED FOR THE CONTRACTORS CONVENIENCE ONLY. ALL COUNTS MUST BE VERIFIED BY THE CONTRACTOR. IN THE CASE OF A DISCREPANCY BETWEEN THE LEGEND AND THE PLAN, PLANTS INDICATED ON THE PLAN SHALL SUPERCEDE QUANTITIES LISTED IN THE LEGEND. THE CONTRACTOR SHALL BE RESPONSIBLE FOR FINAL PLANT COUNTS, QUANTITIES, AND AREA CALCULATIONS.
 - UTILITY LOCATIONS SHOWN ON PLANS MAY DIFFER FROM FIELD CONDITIONS. CONTRACTOR TO FIELD VERIFY ALL UTILITIES BEFORE INSTALLATION. CONFLICTS BETWEEN ANY EXISTING AND PROPOSED UTILITIES ARE TO BE BROUGHT TO THE ATTENTION OF THE OWNERS REPRESENTATIVE IMMEDIATELY.
 - ALL PLANTING AREAS TO BE IRRIGATED. SEE L3.01 AND L3.02 FOR IRRIGATION PLANS.



waterleaf
ARCHITECTURE, INTERIORS & PLANNING
1111 17th Ave
Seattle, WA 98101
Phone: 206.461.1001
Fax: 206.461.1002

595
DESIGN

GREENWORKS
GREENWORKS, INC.
2000 1st Ave, Suite 100
Portland, OR 97208

Lloyd Center West Anchor
Core and Shell Package

901 Lloyd Center
Portland, Oregon 97232

50%
CONSTRUCTION
DOCUMENTS
Project #: 1410.36
Sheet Issue Date: Aug. 14, 2018
Revisions:
1. 08/14/2018

PLANTING PLAN -
NORTH ENTRY
L4.02



waterleaf
architecture, interiors + planning



595
DESIGN

C9

BACKUP BIKE PARKING

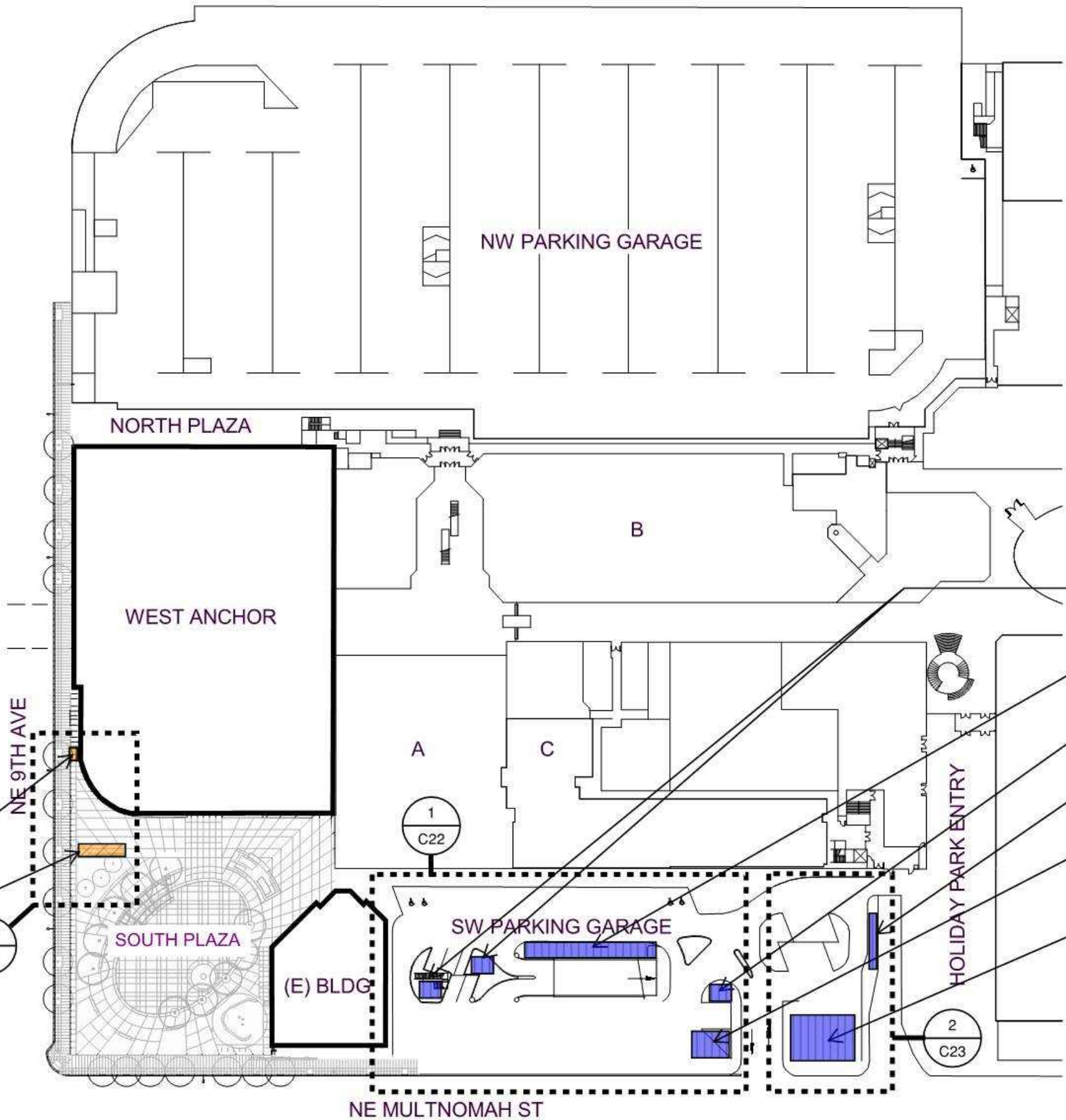
Bicycle Parking Analysis
Building Area By Use (33.266:

Ground Floor / Second Floor;
Retail Sales and Service: 88,280 sf
Short Term: 1 stall / 5,000 sf = 18 stalls
Long Term: 1 stall / 12,000 sf = 7 stalls

Third Floor / Fourth Floor;
Major Event Entertainment:
Short Term: Not Required
Long Term: 3,666 @ 1/40 seats = 92 stalls

Total Required Short Term Stalls = 18-stalls
Total Proposed Short Term Stalls = 18-stalls

Total Required Long Term Stalls = 99-stalls
Total Proposed Long Term Stalls = 103 stalls



Short Term Stalls:
Proposed: 2 stalls

Short Term Stalls:
Proposed: 16 stalls

Long Term Stalls:
Proposed: 16 new stalls

Long Term Stalls:
Proposed: 28 new stalls

Long Term Stalls:
Proposed: 8 new stalls

Long Term Stalls:
Proposed: 6 new stalls

Long Term Stalls:
Proposed: 28 new stalls

Long Term Stalls:
Existing: 26 stalls
Proposed: 17 new stalls

