

3303 SW BOND AV.

FA08-104340

PA08-104340

G

NOV 12 2008
MICROFILMED

21



CITY OF PORTLAND, OREGON - BUREAU OF DEVELOPMENT SERVICES

1900 SW Fourth Avenue • Portland, Oregon 97201 • www.portlandonline.com/bds • 503-823-0852 • FAX 503-823-7425



Facilities Permit Plan Intake Form

FOR INTAKE, STAFF USE ONLY		Building/Mechanical <u>BURRIS</u> ①
Date Received <u>1/23/03</u>	Electrical <u>Hartfield</u> ②	
Building Registration # _____	Plumbing <u>COOPER</u>	
Fixed Bid _____	Fire <u>Boyles</u> ③	
Bin # <u>FD-5</u>	Planning _____	
Building Permit # <u>08.104340.FA</u>	BES _____	
Mechanical # _____	PDOT _____	
Plumbing Permit # _____	Structural _____	
Electrical Permit # _____	Other _____	

APPLICANT: Complete all sections below that apply to the project. Please print legibly.

Print Name DAVID DATERMAN Sign Name [Signature]
 Street Address ON BEHALF OF RIMCO, LLC, 3181 SW SAM JACKSON PARK ROAD, OPOT
 City PORTLAND State OREGON Zip Code 97239-3098
 Day Phone 503 720-7722 FAX 503 494-1646 email daterman_pm@earthlink.net

Plans / permits available for pick up at 1900 SW 4th Avenue, 5th floor between 8:00 am to 5:00 pm

Contact Name for plan/permit pick up DAVID DATERMANDay Phone 503 720-7722 email daterman_pm@earthlink.netProject Building Name / # OSKIA CENTER FOR HEALTH & HEALING / # 07-140260 FCProject Address or Location 3303 SW BOND AVENUEProject Name and Description REVISIONS TO SHOWER AT WELLNESS SPA FOR ADATotal Project Value \$ 5000 (EST.) Project Reference # 12248907 (CHH ANSWERS W.D.H.)Building Contractor HEFFMAN CONSTRUCTIONCCB # 28417

Mechanical Contractor _____

CCB # _____

Electrical Contractor _____

CCB# _____

License # _____

Plumbing Contractor JH KellyCCB# 117544License # 37-92 PB☒ Building Permit☒ Alarms Required☐ Electrical Permit

No. of Stories _____

☒ Smoke Det. Req'd

Please provide a completed standard electrical permit application form. You may mail or deliver it to 1900 SW 4th Avenue, Portland, Oregon 97201 or FAX to 503-823-7425.

Const. Type ALTERATION☒ Sprinklers Req'd☒ Struc. Eng / Calcs Submitted☐ Plumbing Permit☐ Mechanical Permit

Mechanical Valuation _____

Number of Fixtures _____

Description _____

Back Flow Devices _____

Water Service (# of Feet) _____

Medical Gas _____

Other _____



HOFFMAN CONSTRUCTION COMPANY

OF OREGON
HCC Job No. 2310003
CCB #28417



OK3U RIVER CAMPUS

MEDICAL BUILDING 1
Portland, OR
GBD Job # 4025

O : Owner, Architect, Consultants

DATE : 07/23/07

Dennis Wilde, GED	Ron Huld, GBD	Tacia Miller, Geo Design
Dean Pape, GED	Jeff Medearis, Carlson	

TO : Hoffman Personnel

Dick Sillman	Michael Tryon	HCC Main Office
Mike Custer	Jesse Fritch	orig CCD LOG
Vic Rennie	Brenda Alexander	Routing
Dave Rommel	Mitch Gensman	X Posting
Greg Garske	Brad Jenks	

TO : Subcontractors / Vendors (O=office; F=field)

O	F		O	F		O	F
		AIG			Greater Seattle Floors		
		All Phase paint			Glacier		Pardue Rest'n. 503-233-9787
		ASD			Harris Rebar 253-272-7256		PCI
		Basco			HSI 503-221-8934		Pool Co
		Basic Fire			ISEC		Pro Bel
		Benson 503-226-0070	X		JH Kelly		PTC
		BC Installation			JS Perrott		R2M2 503-258
		Bratton Masonry			Lynco		REFA
		WA Bolting 503-656-2030			Metallbau Group	X	Rubenstein
		BMS			McKinstry 503-331-6906		Schonert
		Chown			Ming 503-261-8680		Snyder
		Coffman Excavating 503-656-0686			Mountain Glass		Superior
		Condor 604-689-9206			MSR NW		TCM
		DeFrang			NW Handling	X	WH Cress
		DuPre			OTIS Elevator		WPI
		Dyna-elect			Overhead Doors		Arthur Jay
		Dyna-Tech			Intervenor Tech		Bolting
		ECC	X				Liberty
		Environmental Controls					
		Fought 503-620-3279					
X		Ex Products					

Enclosed are the following documents: **CCD No. 367**

Please review these documents carefully. Whether or not these documents contain revisions to your work which affects your agreement in price, either additions, credits or no cost, a response from your company is required. Please submit your proposal for these revisions to:

(X) Brad Jenks, at our field office no later than ASAP

() Mitch Gensman, Project Manager, at our field office no later than _____

You are to: _____ incorporate this information into your work immediately. No cost impact.

_____ submit price and wait for authorization to proceed.

X proceed with work and submit price by date listed above. A ROM cost must be received prior to proceeding.

_____ proceed with work immediately. Time and materials cards must be signed daily by our Project Superintendent.

_____ review for your use. No further action required.

NOTE: CCD pricing submitted after above date will not be accepted by Owner/Contractor.

If you need any additional clarification, please direct your questions to Michael Tryon at (503) 972-3580; fax (503) 972-3598.

COMMENTS :

Sincerely,

Brad Jenks
Project Engineer

Site address:
Hoffman Construction Company
3500 SW Bond Ave., Portland, OR 97219
503-972-3570
503-972-3598 (fax)

CONSTRUCTION CHANGE DIRECTIVE

ARCHITECTURE
SPACE PLANNING
INTERIOR DESIGN

PROJECT NAME: OHSU River Campus Building One
PROJECT NO.: 20034025S
TO CONTRACTOR: Hoffman Construction Co.
CCD NO.: 367TI-WELL
DATE OF ISSUANCE: 7/18/07
CONTRACT DATED: 3/15/04

The Contractor is directed to make the following change(s) in this Contract:

Revise Shower 2110F to become ADA compliant. This requires removing the existing shower valve/head assembly and installing a new shower valve, in-line diverter, and hand held shower as well as grab bars and shower seat.

PROPOSED ADJUSTMENTS

- The proposed basis of adjustment to the Contract Sum or Guaranteed Maximum Price is estimated:
☐ Lump Sum increase of \$
☐ Unit Price of \$ per
☐ as follows:
- The Contract Time is proposed to be adjusted. The proposed adjustment, if any, is an increase of 0 days.

ARCHITECT (name and address):
GBD Architects, Inc.
1120 NW Couch St., Suite 300
Portland, OR 97209

OWNER (name and address):
RIMCO - OHSU Medical Group
3181 SW Sam Jackson Park
Road, OP04
Portland, OR 97239

CONTRACTOR (name and address):
Hoffman Construction Co.
805 SW Broadway
Suite 2100
Portland, OR 97205



1120 NW Couch Street
Suite 300, Portland
OR 97209
Tel: (503) 224-7656
Fax: (503) 254-6273
www.gbdarchitects.com

by:

by:

by:

DATE:

DATE:

DATE:

Upon receipt of this executed document (signed by the Architect and Owner), the Contractor shall proceed with the work described herein. Signature by the Contractor indicates agreement for the estimated proposed cost and/or time adjusted noted.

DISTRIBUTION:

Owner ☒ Architect ☒ Consultant ☒ Contractor ☐ Field ☒ Other ☐

ATTACHMENTS:

REVISED DRAWINGS:

ARCHITECTURAL

RA1223 TIA105

RA1224 TIA505

RA1225 TIA506

PLUMBING

RP230 TIP205



1120 NW Couch Street
Suite 300, Portland
OR 97209
Tel: (503) 224.9656
Fax: (503) 299.6273
www.gbdarchitect.com



● ● ●

**OHSU River Campus
Building One
RIMCO LLC
OHSU Medical Group
3181 SW Sam Jackson Park Road OHSU
Portland, OR 97239**



1 CCD 36TH-WELL
REVISIONS

DATE _____

07/18/07

PROJECT NUMBER
20034025

SHEET TITLE
PARTIAL SECOND
FLOOR PLAN

SCALE
1/8" = 1'-0"

RA1223
TIA105

100 G&D ARCHITECTS Incorporated

BUREAU OF DEVELOPMENT SERVICES
CITY OF PORTLAND

BUREAU OF DEVEL
CITY OF PORTLAND
THE BOARD OF ALTERNATIVE DISPUTE RESOLUTION
EMERGENCY CONCILIATION DO NOT HAVE A RIGHT
TO VIOLE ANY AGREEMENT OR ORDER
CITY # 28-12

FACILITY #

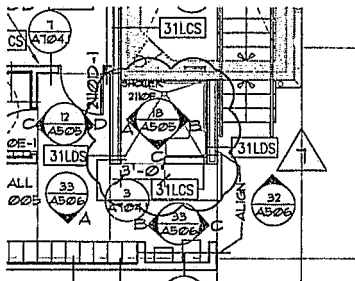
810G. FERRARI
MECH FERRARI

DATE _____

DATE _____
REVIEWED BY *Scob*
THESE PLANS & SPECIFICATIONS SHALL BE ON
FOR SITE FOR ALL INSPECTIONS.

75 SITE FOR ALL RESPONDENTS

1-29-81
pk



1 PARTIAL SECOND FLOOR PLAN

$$1/8' = 1' - 0'$$

CAD FILE P: 40 North Macadam\25 MOB\7.00 Drawings\CD-Current\Plots-Elevations\TA-105.dwg
Jul 18, 2007 - 4:56pm

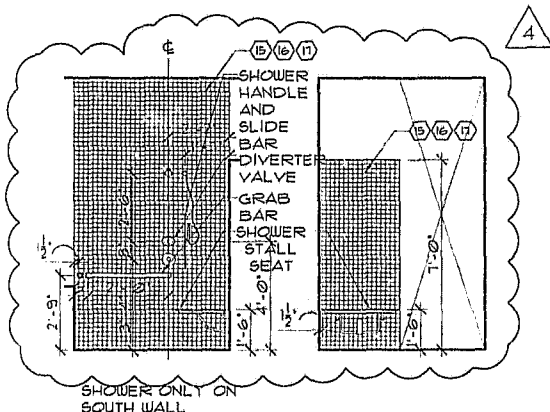


1120 NW Couch Street
Suite 300, Portland
OR 97209
Tel: (503) 224-6556
Fax: (503) 299-6273
www.gbdarchitects.com



08-0-2008

OHSU River Campus
Building One
RIMCO LLC
OHSU Medical Group
17 SW Jackson Park Road
Portland, OR 97239



A B

C

18 SHOWER 2110F

1/4" = 1'-0"

CCD 136711-001
REVISIONS

DATE

07/18/07

PROJECT NUMBER
20034025

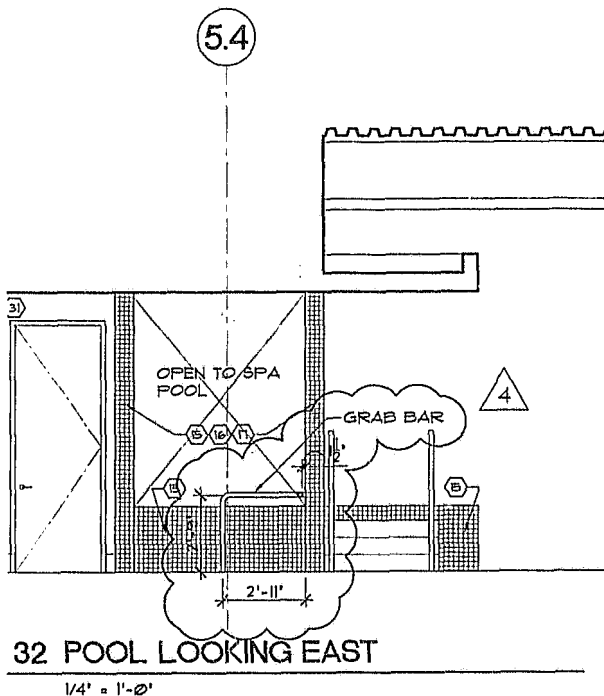
SHEET 1 OF 2
2ND FLOOR
L. 1A10NS

SCALE
1/4" = 1'-0"

RA1224
TIA505

ALL RIGHTS RESERVED

40-Norm Macadam\35\403\1\00\Drawing\CD-Current Plans-Building\TIA506.dwg
 CAD FILE P...
 Jul 18, 2007... 10:01am



32 POOL LOOKING EAST

1/4" = 1'-0"



1120 NW Couch Street
 Suite 300, Portland
 OR 97209
 Tel: (503) 224-9656
 Fax: (503) 297-6273
 www.gbdarchitects.com



ORSU River Campus
 Building One
 RIMCO LLC
 ORSU Medical Group
 341 NW 3rd Avenue, 1st Floor
 Portland, OR 97239



CCP 36TH-BELL
 REVISIONS

DATE
 07/18/07

PROJECT NUMBER
 20034025

SHEET TITLE
 2ND FLOOR
 ELEVATIONS

SCALE
 1/4" = 1'-0"

RA1225
 TIA506

POWERS™

PRODUCT SPECIFICATION BILTMORE SERIES 900 Pressure Balancing Mixing Valves Model 3

DESCRIPTION

Concealed, 4-port, pressure balancing water mixing valve for use in shower and tub/shower applications. Cast-brass body features diaphragm-type pressure balancing mechanism. Internal parts constructed of lime-resistant Delrin 500* for years of trouble-free service. Built-in adjustable temperature limit stop reduces the chance of thermal shock from overadjustment of handle. Cast-in checkstops reduce installation time. Unique construction allows for shallow wall installation—in as little as 51 mm (2"). Back-to-back installation possible in only 102 mm (4") without costly cross-piping.

SPECIFICATIONS

Inlet Connections

Type G 1/2" NPT inlets and outlets
Type H 1/2" sweat end inlets and outlets

Capacity 15 L/min @ 310 kPa
(4.6 gpm @ 45 psi differential)

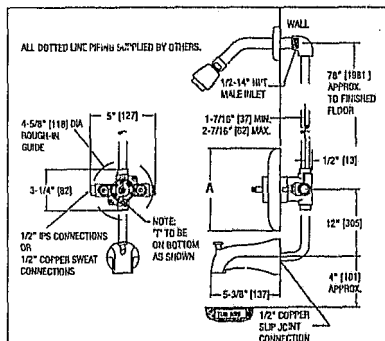
Maximum Static Pressure 862 kPa [125 psig]

Maximum Inlet Temperature 82°C [180°F]

Handle Rotation Stop Standard and adjustable

Shipping Weight Approx. 1.44 kg [3.2 lbs.]

Dimensional Data: Tub and Shower Installation Inches [Millimeters]



Powers continues to strive for improved quality in product performance and, therefore, reserves the right of price, product or design modification without notice or obligation.

P902



Valve trim features:

- Polished stainless steel faceplate
- ADA-compliant metal lever handle for easy adjustment *

P905



Valve trim features:

- Chrome-plated ABS faceplate with color graphic insert for temperature indication
- Stylish ABS lever handle complies with ADA for easy adjustment *

P909



Valve trim features:

- Chrome-plated ABS faceplate with color graphic insert for temperature indication
- Stylish lucite handle enhances any installation

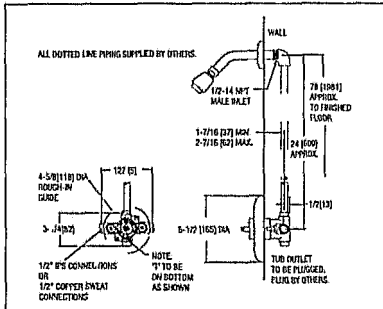
P910



Valve trim features:

- Chrome-plated ABS faceplate with color graphic insert for temperature indication
- ADA-compliant metal lever handle provides easy adjustment *

Dimensional Data: Shower Only Installation Inches [Millimeters]



* Note: When used together, Powers lever handle and hand shower with glides meet ADA compliance standards. For complete ADA-required heights and other information on installing an ADA-compliant bathing system, refer to the ADAAG (Americans with Disabilities Act Accessibility Guidelines).

HOW TO SPECIFY

Shower and Tub/Shower Systems for Series 900 Valves

Order Code

Valves

See front page for selection of valve order code

Showerheads, Arm and Flange

Below showerheads include arm and flange:

Economizer, Chrome-Plated ABS	J1
Standard, Chrome-Plated Brass	K1
Deluxe, Chrome-Plated Brass	M1
Rainbeau, Chrome-Plated, Brass	N1
Arm and Flange Only (no showerhead)	O1

Tub Spouts

Non-Diverter, Chrome-Plated 1/2" IPS	R
Diverter, Chrome-Plated 1/2" IPS	S
Diverter, Chrome-Plated 1/2" Slipfit	U



Hand Shower Systems

24" Chrome ADA Wall Grab Bar System	1
36" Chrome ADA Wall Grab Bar System	2
Deluxe, Metal Hose, 30" Slide Bar	3
Professional, Vinyl Hose, 30" Slide Bar	4
Standard, Metal Hose, Two Wall Hooks	5
Deluxe, Metal Hose, 24" Slide Bar	6
Professional, Vinyl Hose, 24" Slide Bar	7
Standard Plus, Metal Hose, 24" Slide Bar	8
European, Metal Hose, 23" Slide Bar	9



Miscellaneous Accessories

Vacuum Breaker, In-Line	W
Diverter, Concealed, 1/2" IP	Y
Diverter, Exposed, Showerhead type	Z

ENGINEERING APPROVAL

Project: _____

Contractor: _____

Architect/Engineer: _____

POWERS™
a division of Watts Water Technologies, Inc.

© 2006 Powers

USA: Phone: 1.800.669.5430 • Fax 1.847.229.0526 • www.powerscontrols.com
Canada: Phone: 1.888.206.6927 • Fax 1.888.882.1979 • www.powerscontrols.ca

POWERS™

PRODUCT SPECIFICATION

IN-LINE DIVERTER VALVES 141-600B, 141-600E & 141-600F

Form PS 141-600B/E/F v4

DESCRIPTION

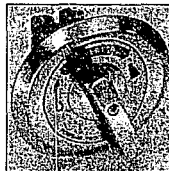
HydroGuard® 3-port, in-line diverter valve provides smooth transfer of water from one outlet (showerhead) to another (hand shower or tub spout). Compatible with all Billmore 900, HydroGuard 410, HydroGuard T/P Series e700 and e420 tempering shower valves.

Valve features:

- Cast bronze body.
- Chrome-plated zinc die-cast ABS, ADA-compliant handles.
- Stainless steel faceplate.
- Easy-to-read graphic insert.

SPECIFICATIONS

Connections 1/2" sweat Inlets and outlet
Capacity 6.0 gpm @ 45 psi differential
(23 L/min @ 310 kPa)
Maximum Inlet Temperature 180°F [82°C]
Maximum Operating Pressure 125 psig [862 kPa]
Agency Approvals ADA-compliant handle
Certified CSA-B125
Shipping Weight 3.0 lbs [1.4 kg.]

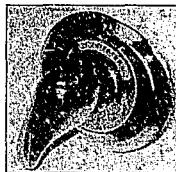


Standard Metal Handle
141-600B



Deluxe ABS Handle
141-600E

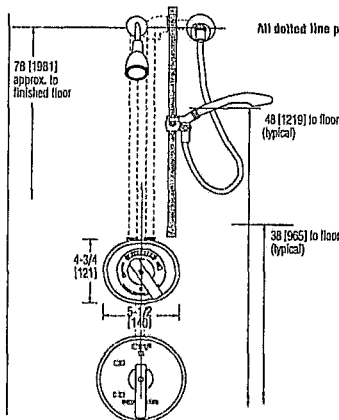
ADA-compliant handles 



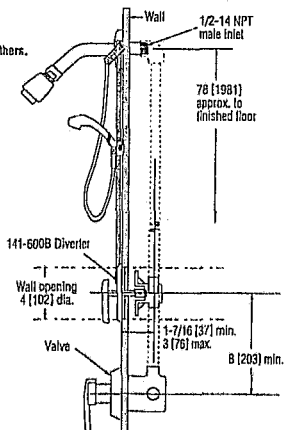
Deluxe Metal Handle
141-600F

TYPICAL INSTALLATION

Millimeters [Inches]



All dotted line piping supplied by others.



Powers Process Controls continues to strive for improved quality in product performance and, therefore, reserves the right of price, product or design modification without notice or obligation. See reverse for parts and repair kits.

PARTS AND REPAIR KITS

Handle Kit #141-620 For 141-600B

Item	Description	Qty.
A	Lever Handle Screw	1
B	Lever Handle	1

Handle Kit #220-052A For 141-600E

Item	Description	Qty.
A	Lever Handle Screw	1
B	Lever Handle	1

Handle Kit #220-050 For 141-600F

Item	Description	Qty.
A	Lever Handle Screw	1
B	Lever Handle	1

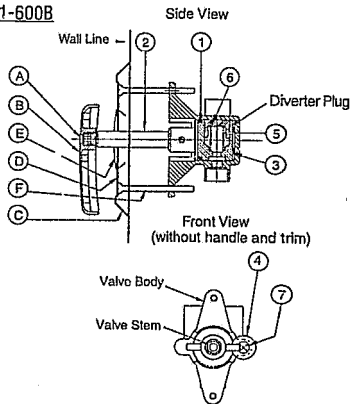
Trim Kit #141-622

Item	Description	Qty.
C	Trim Plate	1
D	Graphic Insert	1
E	Plug Button	1
F	Trim Plate Screws	2

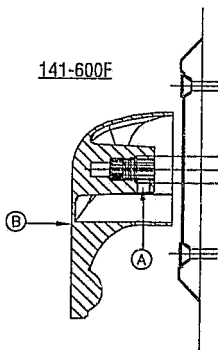
Stem Kit #141-621

Item	Description	Qty.
1	O-Ring	1
2	Stem	1
3	Washer	1
4	Washer	1
5	Spring	1
6	Shut-Off Plug	1
7	Screw	1

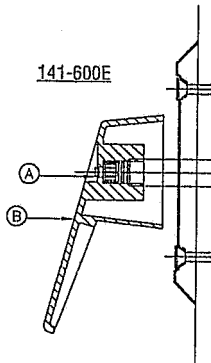
141-600B



141-600F



141-600E



ENGINEERING APPROVAL

Project:

Consultant:

Architect/Engineer:

CALIFORNIA PROPOSITION 65 WARNING

WARNING: This product contains chemicals known to the State of California to cause cancer and birth defects or other reproductive harm. (California law requires this warning to be given to customers in the State of California.)

For more information: www.wattsind.com/prop65

POWERS™

© 2004 Powers, a division of Watts Water Technologies, Inc.
 USA Phone: 1.800.669.5430 • Fax 1.847.824.0627
 Canada Phone: 1.888.208.8927 • Fax 1.888.882.1979
www.powerscontrols.com



AMERICAN SPECIALTIES, INC.

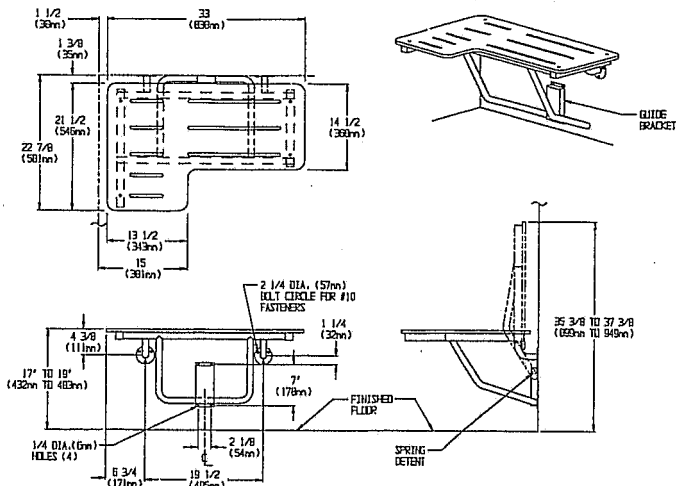
441 Saw Mill River Road, Yonkers, NY 10701 (914) 476-9000
www.amerianspecialties.com

MODEL No: 8206

ISSUED: 1-87

REVISED: 12-05

L-SHAPED PHENOLIC FOLD-UP SHOWER STALL SEAT (pg 1 of 2)



SPECIFICATION

"L-shaped" Phenolic Fold-up Shower Stall Seat shall have all metal parts fabricated of 18-8 alloy type 304 stainless steel. Seat frame and support legs shall be 1" (25mm) dia. and 1-1/4" (32mm) square x 18 gauge (1.2mm) with 3/16" (4.8mm) thick mounting flanges and 16 gauge (1.5mm) guide bracket/arm support. All exposed surfaces shall have N°4 satin finish. Structural assembly shall be of welded construction and all exposed edges and corners shall be radiused and/or deburred. Seat shall be solid phenolic with ivory color top and bottom surfaces and shall have black edges. Support arm shall fold up when in retracted position to provide low profile against wall. No extra fittings shall be required to retain seat in storage position. Guide bracket shall control seat lowering into operating position. Unit shall satisfy ADA Accessibility Guidelines when mounted properly.

"L-shaped" Phenolic Fold-up Shower Stall Seat shall be Model N° 8206-___ (R for right hand or L for left hand) as manufactured by American Specialties, Inc., 441 Saw Mill River Road, Yonkers, New York 10701-4913

INSTALLATION

This unit is surface mounted. Installer/construction contractor must provide concealed anchor plate or blocking as specified in construction documents or as required by local building codes prior to wall finishing. Fasten unit flanges and guide bracket to concealed anchor or blocking plate with appropriate hardware. See "STRENGTH" section below. Note that concealed mounting plates or anchors and hardware are not supplied with this product and must be specified separately. Ensure that mounting configuration complies with local building codes. Unit is reversible in the field for right or left hand installation.

STRENGTH

ASI Shower Seats are designed to meet and exceed ADAAG requirements as published in ICC/A°SI A117.1-2003 section 610 and CFR 28 Part 36, Federal Register Vol. 56 N° 144, 26 July 1991, section 4.21.3 and section 4.26.3. It is fabricated product shall be of adequate strength to support a load of 250 pounds (113.4 kg) and unit shall conform to size and edge clearances as diagrammed. Mounting to the wall is a critical part of the system to meet this requirement. To withstand the shear, tension or pullout, and torsion loads generated by the maximum loading, the fastener system must be adequately sized. Unit is load rated to support a weight of 500 lbs at front edge when properly installed and has been tested to successfully hold a weight in excess of 1000 lbs.

Accessory Specialties

AMERICAN DISPENSER

Desert Ray Products

NATROUS, INC.

THIS MANUFACTURER RESERVES THE RIGHT TO MAKE CHANGES IN DESIGN OR DIMENSIONS WITHOUT FORMAL NOTICE

**AMERICAN SPECIALTIES, INC.**

441 Saw Mill River Road, Yonkers, NY 10701 (914) 476-9000
www.americanspecialties.com

MODEL No: 8206

ISSUED: 1-87

REVISED: 12-05

L-SHAPED PHENOLIC FOLD-UP SHOWER STALL SEAT (pg 2 of 2)**MATERIALS**

Tube: 18 gauge (.048 in. <1.22mm> thick), type 304 stainless steel 1" (25mm) dia. and 1-1/4" (32mm) square. Unitized all welded construction. Exposed surfaces have satin finish. Edges and corners are radiused and burr free. Frame is field reversible for either left or right hand.

Flange: 3/16" (4.8mm), type 304 stainless steel. Exposed surfaces have satin finish. Edges are radiused and burr free.

Bracket: 16 gauge (.06 in. <1.52mm> thick), type 304 stainless steel. Exposed surfaces have satin finish. Edges and corners are radiused and burr free.

Seat: Solid Phenolic ("L" shape) 1/2" x 33" x 21-1/2" (13mm x 838mm x 546mm) nonporous seat has ivory colored top and bottom surfaces with semi-gloss finish and black edges with radiused and burr free corners. Seat top shall be field reversible for left or right hand. Seat top shall have slots for water drainage and user slip resistance. Mounting hardware is smooth stainless steel dome head carriage bolts with acorn nuts on bottom.

Spring: Stainless steel wire, type 304, 1" body dia. (25 mm) x 3" body length (76mm) x .075" diameter (1.91mm).

OPERATION

Fold-up Shower Seat requires only one hand operation to manually lower to horizontal position for use or raise for departure and arrival. Guide bracket with spring detent prevents seat from dropping and provides positive support in usage position as well as spring locked storage position.



CITY OF PORTLAND, OREGON - BUREAU OF DEVELOPMENT SERVICES

1900 SW Fourth Avenue • Portland, Oregon 97201 • www.portlandonline.com/bds • 503-823-0852 • FAX 503-823-7425



Facilities Permit Plan Intake Form

FOR INTAKE, STAFF USE ONLY	
Date Received <u>1/23/08</u>	Building/Mechanical <u>Borris</u>
Building Registration #	Electrical <u>Hartfield</u> (2)
Fixed Bid	Plumbing <u>Cooke</u>
Bin # <u>FD-3</u>	Fire <u>Boyles</u> (3)
Building Permit # <u>08-104340-FA</u>	Planning
Mechanical #	BES
Plumbing Permit # <u>07-178035-FA</u>	PDOT
Electrical Permit #	Structural
	Other

APPLICANT: Complete all sections below that apply to the project. Please print legibly.

Print Name DAVID DATERMAN Sign Name [Signature]
 Street Address ON BEHALF OF RIMCO, LLC, 3181 SW SAM JACKSON PARK ROAD, OP04
 City PORTLAND State OREGON Zip Code 97239-3098
 Day Phone 503 720-7722 FAX 503 494-1646 email daterman_pm@earthlink.net

Plans / permits available for pick up at 1900 SW 4th Avenue, 5th floor between 8:00 am to 5:00 pm

Contact Name for plan/permit pick up DAVID DATERMANDay Phone 503 720-7722 email daterman_pm@earthlink.netProject Building Name / # OHSA CENTER FOR HEALTH & HEALING / #07-140260 FCProject Address or Location 3303 SW BOND AVENUEProject Name and Description REVISIONS TO SHOWER AT WELLNESS SPA FOR ADATotal Project Value \$5000 (EST.) Project Reference # 12248907 (CHH ANNUAL BUDGET)Building Contractor HOFFMAN CONSTRUCTION CCB # 417

Mechanical Contractor CCB #

Electrical Contractor CCB# License #

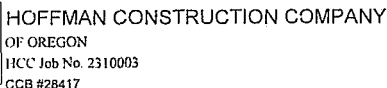
Plumbing Contractor JH Kelly CCB# 117544 License # 37-92 PB

☒ Building Permit ☐ Alarms Required
 No. of Stories 1 ☐ Smoke Det. Req'd
 Const. Type ALTERATION ☐ Sprinklers Req'd
☐ Struct. Eng / Calcs Submitted

☐ Electrical Permit
 Please provide a completed standard electrical permit application form. You may mail or deliver it to 1900 SW 4th Avenue, Portland, Oregon 97201 or FAX to 503-823-7425.

☐ Plumbing Permit
 Number of Fixtures
 Back Flow Devices
 Water Service (# of Feet)
 Medical Gas
 Other

☐ Mechanical Permit
 Mechanical Valuation
 Description



MEDICAL BUILDING 1

Portland, OR

GBD Job No. 20034025

3 : Owner, Architect, Consultants

DATE : 07/23/07

	Dennis Wilde, GED		Ron Huld, GBD		Tacia Miller, GED	sign
	Dean Pape, GED		Jeff Medearis, Carlson			

TO : Hoffman Personnel

	Dick Silliman		Michael Tryon		HCC Main Office
	Mike Custer		Jesse Fritch	orig	CCD LOG
	Vic Rennie		Brenda Alexander		Routing
	Dave Rommel	X	Mitch Gensman	X	Posting
	Greg Garske		Brad Jenks		

TO : Subcontractors / Vendors (O=office; F=field)

O	F		O	F		O	F		76 /
		AIG			Greater Seattle Floors			Pardue Rest'n.	503-233-9787
		All Phase paint			Glacier			PCI	
		ASD			Harris Rebar 253-272-7256			Pool Co	
		Basco			HSI 503-221-8934			Pro Bel	
		Basic Fire			ISEC			PTC	
		Benson 503-228-0070	X		JH Kelly			R2M2	503-258-2343
		BC Installation			JS Perrott			REFA	
		Bratton Masonry			Lynnco			Rubenstein's	
		WA Botting 503-656-2030			Metalbau Group	X		Schonert	
		BMS			McKinstry 503-331-6806			Snyder	
		Chown			Ming 503-261-8680			Superior	
		Coffman Excavating 503-656-0686			Mountain Glass			TCM	
		Condor 504-689-9206			MSR NW			WH Cress	
		DeFrang			NW Handling	X		WPI	
		DuPree			OTIS Elevator			Arthur Jay	
		Dyna-elect			Overhead Doors			Botling	
		Dyna-Tech						Liberty	
		ECC	2		Tintura Tree				
		Environmental Controls							
		Fought 503-620-3279							
X		Gibbs Products							

Enclosed are the following documents: CCD No. 367

☐ I have reviewed these documents carefully. Whether or not these documents contain revisions to your work which affects your agreement with us, I agree with the terms of the documents.

either additions, credits or no cost, a response from your company is required. Please submit your proposal for these revisions

ad Jenks. at our field office no later than **ASAP**

() Mitch Gensman, Project Manager, at our field office no later than _____

You are to: incorporate this information into your work immediately. No cost impact.

submit price and wait for authorization to proceed.

~~X~~ proceed with work and submit price by date listed above. A ROM cost must be received prior to proceeding.

proceed with work immediately. Time and materials cards must be signed daily by our Project Superintendent.

review for your use. No further action required.

NOTE: CCD pricing submitted after above date will not be accepted by Owner/Contractor.

If you need any additional clarification, please direct your questions to Michael Tryon at (503) 972-3580 ; fax (503) 972-3598 .

COMMENTS :

cerely.

Brad Jenks
Project Engineer

Site address:
Hoffman Construction Company
3500 SW Bond Ave. Portland, OR 97239
503-972-3570
503-972-3598 (fax)

OHSU Distran Brad.xls / CCD

7/23/2007

CONSTRUCTION CHANGE DIRECTIVE

ARCHITECTURE
SPACE PLANNING
INTERIOR DESIGN

PROJECT NAME: OHSU River Campus CCD NO.: 3677I-WELL
Building One
PROJECT NO.: 200340255 DATE OF ISSUANCE: 7/18/07
TO CONTRACTOR: Hoffman Construction Co. CONTRACT DATED: 3/15/04
Co.

The Contractor is directed to make the following change(s) in this Contract:

Revise Shower 2110F to become ADA compliant. This requires removing the existing shower valve/head assembly and installing a new shower valve, in-line diverter, and hand held shower as well as grab bars and shower seat.

PROPOSED ADJUSTMENTS

- The proposed basis of adjustment to the Contract Sum or Guaranteed Maximum Price is estimated:
☐ Lump Sum Increase of \$
☐ Unit Price of \$ per
☐ as follows:
- The Contract Time is proposed to be adjusted. The proposed adjustment, if any, is an increase of 0 days.

ARCHITECT (name and address):
GBD Architects, Inc.
1120 NW Couch St., Suite 300
Portland, OR 97209

OWNER (name and address):
RIMCO - OHSU Medical Group
3181 SW Sam Jackson Park
Road, OP04
Portland, OR 97239

CONTRACTOR (name and address):
Hoffman Construction Co.
805 SW Broadway
Suite 2100
Portland, OR 97205

by:

by:

by:

DATE:

DATE:

DATE:



1120 NW Couch Street
Suite 300 Portland
OR 97209
Tel: (503) 224-9656
Fax: (503) 299-6273
www.gbdarchitects.com

Upon receipt of this executed document (signed by the Architect and Owner), the Contractor shall proceed with the work described herein. Signature by the Contractor indicates agreement for the estimated proposed cost and/or time adjusted noted.

DISTRIBUTION:

Owner ☒ Architect ☒ Consultant ☒ Contractor ☐ Field ☒ Other ☐

ATTACHMENTS:

REVISED DRAWINGS:

ARCHITECTURAL

RA1223 TIA105

RA1224 TIA505

RA1225 TIA506

PLUMBING

RP230 TIP205

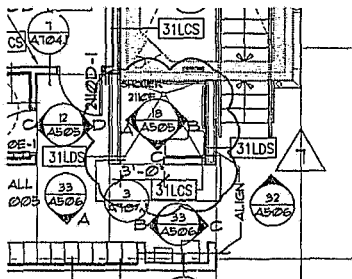


1120 NW Couch Street
Suite 300, Portland
OR 97209
Tel: (503) 224-9456
Fax: (503) 299-6273
www.gbdarchitect.com



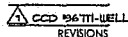
— 0 —

OHSU River Campus
Building One
RIMCO LLC
OHSU Medical Group
3181 SW Sam Jackson Park Road
Portland, OR 97239



1 PARTIAL SECOND FLOOR PLAN

1/8" = 1'-0"



REVISIONS

DATE

07/18/07

PROJECT NUMBER

20034025

SHEET TITLE

PARTIAL SECOND
FLOOR PLAN

SCALE

1/8" = 1'-0"

RA1223
TIA105

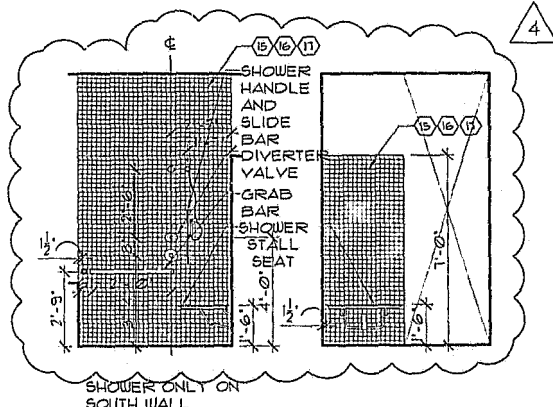


1120 NW Couch Street
Suite 300, Portland
OR 97209
Tel: (503) 224-9656
Fax: (503) 299-6273
www.gbdarchitects.com



08-12-2003

OHSU River Campus
Building One
RIMCO LLC
OHSU Medical Group
3111 N. East Jackson Street, Room 900
Portland, OR 97232

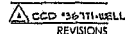


A B

C

18 SHOWER 2110F

1/4" = 1'-0"



DATE

07/18/07

PROJECT NUMBER

20034025

SHEET TITLE
2ND FLOOR
ELEVATIONS

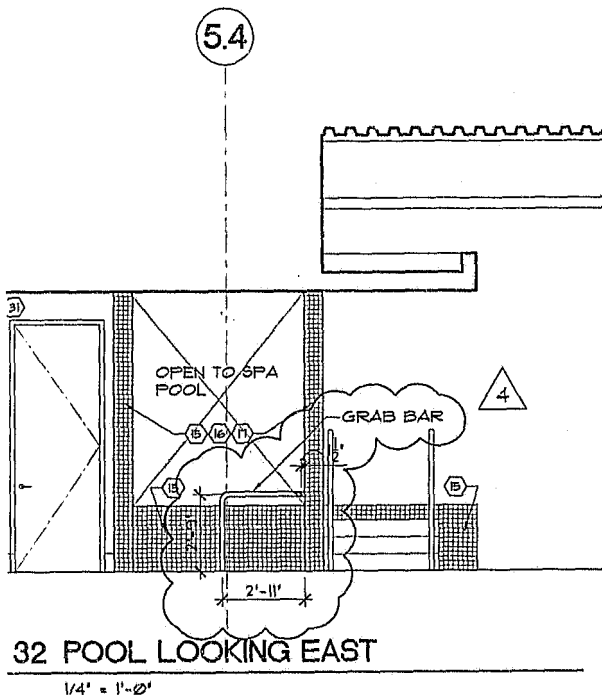
SCALE
1/4" = 1'-0"

RA1224
TIA505

*** GBC ARCHITECTS incorporated

* ASD INC. # 10003140 Right Manufacturing 28 Mcg # 1010 average C.D.C. Invent Plans Elevations TIA505.dwg
of 20 2007-11-16pm

40 North Macadam, 32 MOB 7.07 Drawings, CDC Current Plans Elevations, 1-A506.dwg
 CAD FILE BY: J. L. 2007.11.20am



1120 NW Couch Street
 Suite 300, Portland
 OR 97209
 Tel: (503) 224,9456
 Fax: (503) 299,6273
 www.gbdarchitects.com



OHSU River Campus
 Building One
 RIMACO LLC
 OHSU Medical Group
 3101 NW Love Jackson Road
 Portland, OR 97239



CCD 156-TITLE-WELL
 REVISIONS

DATE
 07/18/07

PROJECT NUMBER
 20034025

SHEET TITLE
 2ND FLOOR
 ELEVATIONS

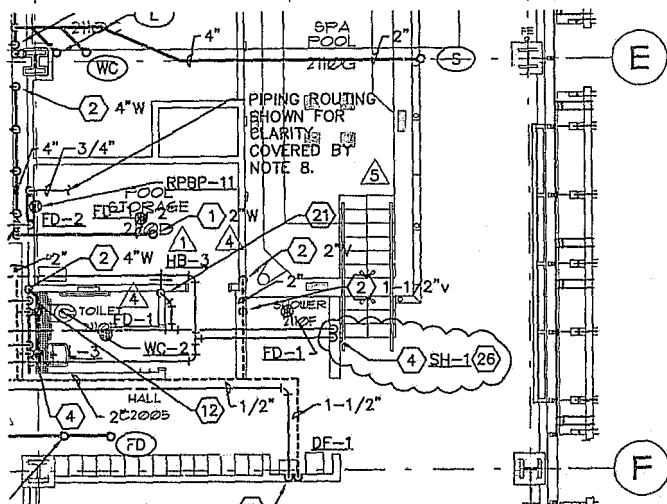
SCALE
 1/4" = 1'-0"

RA1225
 TIA506

5

5.4

6



- 26 REMOVE EXISTING SHOWER VALVE/HEAD ASSEMBLY AND INSTALL NEW "POWERS" 910 PRESSURE COMPENSATING SHOWER VALVE, IN-LINE DIVERTER VALVE #141-600B AND HAND HELD SHOWER ASSEMBLY #6 (DELUXE METAL HOSE/24" SLIDE BAR/HAND HELD SHOWER).



ARCHITECTS

1120 NW Couch Street
Suite 300, Portland
OR 97209
Tel: (503) 224-9556
Fax: (503) 297-6273
www.gbdarchitects.com

OHSU

OHSU River Campus

Building One

RIMCO LLC

OHSU Medical Group

1810 SW Main Street, Suite 200

Portland, OR 97239



REVISIONS

DATE

07/17/07

PROJECT NUMBER

20034025

SHEET TITLE

2ND FLOOR PLAN - PLUMBING

SCALE

1/8" = 1'-0"

RP230

TIP205

POWERS™

PRODUCT SPECIFICATION

BILTMORE SERIES 900

Pressure Balancing Mixing Valves

Model 3

DESCRIPTION

Concealed, 4-port, pressure balancing water mixing valve for use in shower and tub/shower applications. Cast-brass body features diaphragm-type pressure balancing mechanism. Internal parts constructed of lime-resistant Delrin 500* for years of trouble-free service. Built-in adjustable temperature limit stop reduces the chance of thermal shock from overadjustment of handle. Cast-in checkstops reduce installation time. Unique construction allows for shallow wall installation—in as little as 51mm (2"). Back-to-back installation possible in only 102 mm (4") without costly cross-piping.

SPECIFICATIONS

Inlet Connections

Type G 1/2" NPT inlets and outlets

Type H 1/2" sweat end inlets and outlets

Capacity 15 L/min @ 310 kPa
(4.6 gpm @ 45 psi differential)

Maximum Static Pressure 862 kPa [125 psig]

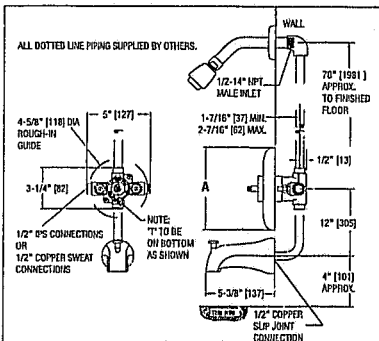
Maximum Inlet Temperature 82°C [180°F]

Handle Rotation Stop Standard and adjustable

Shipping Weight Approx. 1.44 kg [3.2 lbs.]

Dimensional Data: Tub and Shower Installation

Inches [Millimeters]



Powers continues to strive for improved quality in product performance and, therefore, reserves the right of price, product or design modification without notice or obligation.



Valve trim features:

- Polished stainless steel faceplate
- ADA-compliant metal lever handle for easy adjustment *



Valve trim features:

- Chrome-plated ABS faceplate with color graphic insert for temperature indication
- Stylish ABS lever handle complies with ADA for easy adjustment *



Valve trim features:

- Chrome-plated ABS faceplate with color graphic insert for temperature indication
- Stylish lucite handle enhances any installation

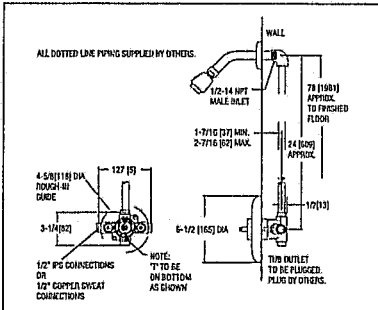


Valve trim features:

- Chrome-plated ABS faceplate with color graphic insert for temperature indication
- ADA-compliant metal lever handle provides easy adjustment *

Dimensional Data: Shower Only Installation

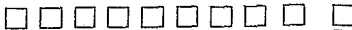
Inches [Millimeters]



* Note: When used together, Powers lever handle and hand shower with glider meet ADA compliance standards. For complete ADA-required heights and other information on installing an ADA-compliant bathing system, refer to the ADAAG Americans with Disabilities Act Accessibility Guidelines.

HOW TO SPECIFY

Shower and Tub/Shower Systems for Series 900 Valves



Order Code

Valves

See front page for selection of valve order code

Showerheads, Arm and Flange

Below showerheads include arm and flange:

Economizer, Chrome-Plated ABS	J1
Standard, Chrome-Plated Brass	K1
Deluxe, Chrome-Plated Brass	M1
Rainbeau, Chrome-Plated, Brass	N1
Arm and Flange Only (no showerhead)	O1

Tub Spouts

Non-Diverter, Chrome-Plated 1/2" IPS	R
Diverter, Chrome-Plated 1/2" IPS	S
Diverter, Chrome-Plated 1/2" Slipfit	U



Hand Shower Systems

24" Chrome ADA Wall Grab Bar System	1
36" Chrome ADA Wall Grab Bar System	2
Deluxe, Metal Hose, 30" Slide Bar	3
Professional, Vinyl Hose, 30" Slide Bar	4
Standard, Metal Hose, Two Wall Hooks	5
Deluxe, Metal Hose, 24" Slide Bar	6
Professional, Vinyl Hose, 24" Slide Bar	7
Standard Plus, Metal Hose, 24" Slide Bar	8
European, Metal Hose, 23" Slide Bar	9



Miscellaneous Accessories

Vacuum Breaker, In-Line	W
Diverter, Concealed, 1/2" IP	Y
Diverter, Exposed, Showerhead Type	Z

ENGINEERING APPROVAL:

Project: _____

Contractor: _____

Architect/Engineer: _____

POWERS™
a division of Watts Water Technologies, Inc.

© 2006 Powers

USA: Phone: 1.800.669.5430 • Fax 1.847.229.0526 • www.powerscontrols.com
Canada: Phone: 1.888.208.8927 • Fax 1.888.882.1979 • www.powerscontrols.ca

PRODUCT SPECIFICATION

IN-LINE DIVERTER VALVES

Form PS 141-600B/E/F v4

[illegible]

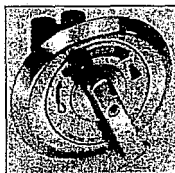
HydroGuard® 3-port, in-line diverter valve provides smooth transfer of water from one outlet (showerhead) to another (hand shower or tub spout). Compatible with all Biltmore 900, HydroGuard 410, HydroGuard T7P Series e700 and e420 tempering shower valves.

Valve features:

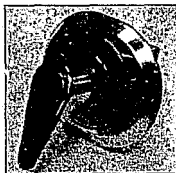
- Cast bronze body.
- Chrome-plated zinc die-cast ABS, ADA-compliant handles.
- Stainless steel faceplate.
- Easy-to-read graphic insert.

SPECIFICATIONS

Connections	1/2" sweat inlets and outlet
Capacity	6.0 gpm @ 45 psi differential (23 L/min @ 310 kPa)
Maximum Inlet Temperature	180°F [82°C]
Maximum Operating Pressure	125 psig [862 kPa]
Agency Approvals	ADA-compliant handled
Certified	CSA-B125
Shipping Weight	3.0 lbs [1.4 kg]



Standard Metal Handle
141-600B



Deluxe ABS Handle
141-600E

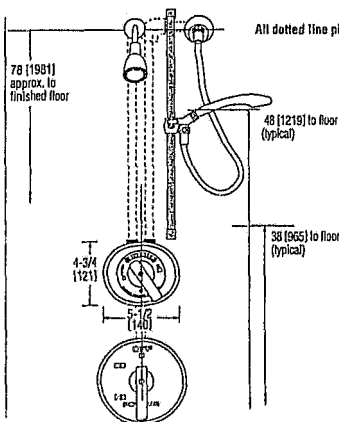
ADA-compliant handles 



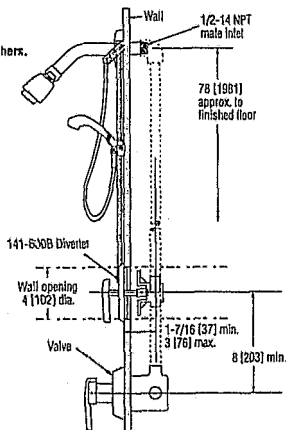
Deluxe Metal Handle
141-600F

TYPICAL INSTALLATION

Millimeters [Inches]



All dotted line piping supplied by others.



Powers Process Controls continues to strive for improved quality in product performance and, therefore, reserves the right of price, product or design modification without notice or obligation. See reverse for parts and repair kits.

PARTS AND REPAIR KITS**Handle Kit #141-620 For 141-600B**

Item	Description	Qty.
A	Lever Handle Screw	1
B	Lever Handle	1

Handle Kit #220-052A For 141-600E

Item	Description	Qty.
A	Lever Handle Screw	1
B	Lever Handle	1

Handle Kit #220-050 For 141-600F

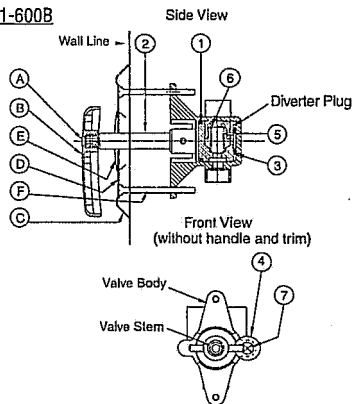
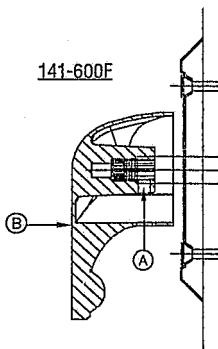
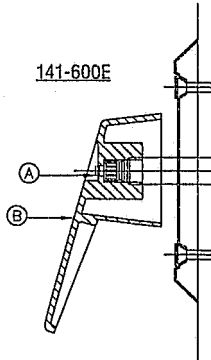
Item	Description	Qty.
A	Lever Handle Screw	1
B	Lever Handle	1

Trim Kit #141-622

Item	Description	Qty.
C	Trim Plate	1
D	Graphic Insert	1
E	Plug Button	1
F	Trim Plate Screws	2

Stem Kit #141-621

Item	Description	Qty.
1	"O"-Ring	1
2	Stem	1
3	Washer	1
4	Washer	1
5	Spring	1
6	Shut-Off Plug	1
7	Screw	1

141-600B**141-600F****141-600E****ENGINEERING APPROVAL**

Project:

Contractor:

Architect/Engineer:

CALIFORNIA PROPOSITION 65 WARNING

WARNING: This product contains chemicals known to the State of California to cause cancer and birth defects or other reproductive harm. (California law requires this warning to be given to customers in the State of California.)
For more information: www.wattsincl.com/prop65

POWERS™

© 2004 Powers, a division of Watts Water Technologies, Inc.
USA Phone: 1.800.619.5430 • Fax 1.847.824.0027
Canada Phone: 1.888.808.8827 • Fax 1.866.882.1079
www.powerscontrols.com



AMERICAN SPECIALTIES, INC.

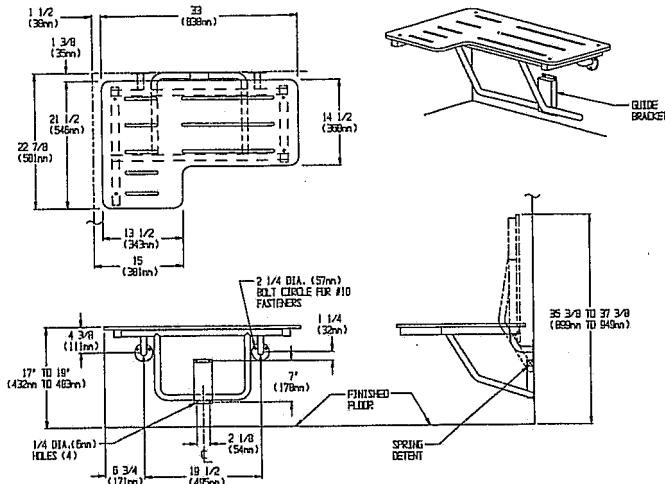
441 Saw Mill River Road, Yonkers, NY 10701 (914) 476-9000
www.americanspecialties.com

MODEL No: 8206

ISSUED: 1-87

REVISED: 12-05

L-SHAPED PHENOLIC FOLD-UP SHOWER STALL SEAT (pg 1 of 2)



SPECIFICATION

"L-shaped" Phenolic Fold-up Shower Stall Seat shall have all metal parts fabricated of 18-8 alloy type 304 stainless steel. Seat frame and support legs shall be 1" (25mm) dia. and 1-1/4" (32mm) square x 18 gauge (1.2mm) with 3/16" (4.8mm) thick mounting flanges and 16 gauge (1.5mm) guide bracket/arm support. All exposed surfaces shall have N° 4 satin finish. Structural assembly shall be of welded construction and all exposed edges and corners shall be radiused and/or deburred. Seat shall be solid phenolic with ivory color top and bottom surfaces and shall have black edges. Support arm shall fold up when in retracted position to provide low profile against wall. No extra fittings shall be required to retain seat in storage position. Guide bracket shall control seat lowering into operating position. Unit shall satisfy ADA Accessibility Guidelines when mounted properly.

"L-shaped" Phenolic Fold-up Shower Stall Seat shall be Model N° 8206 - ____ (R for right hand or L for left hand) as manufactured by American Specialties, Inc., 441 Saw Mill River Road, Yonkers, New York 10701 - 4913

INSTALLATION

This unit is surface mounted. Installer/construction contractor must provide concealed anchor plate or blocking as specified in construction documents or as required by local building codes prior to wall finishing. Fasten unit flanges and guide bracket to concealed anchor or blocking plate with appropriate hardware. See "STRENGTH" section below. Note that concealed mounting plates or anchors and hardware are not supplied with this product and must be specified separately. Ensure that mounting configuration complies with local building codes. Unit is reversible in the field for right or left hand installation.

STRENGTH

ASI Shower Seats are designed to meet and exceed ADAAG requirements as published in ICC/ANSI A117.1-2003 section 610 and CFR 28 Part 36, Federal Register Vol. 56 N° 144, 26 July 1991, section 4.21.3 and section 4.26.3, that fabricated product shall be of adequate strength to support a load of 250 pounds (113.4 kg) and unit shall conform to size and edge clearances as diagrammed. Mounting to the wall is a critical part of the system to meet this requirement. To withstand the shear, tension or pullout, and torsion loads generated by the maximum loading, the fastener system must be adequately sized. Unit is load rated to support a weight of 500 lbs at front edge when properly installed and has been tested to successfully hold a weight in excess of 1000 lbs.

Accessory Specialties

AMERICAN DISPENSER

Desert Ray Products

METROUS INC

THIS MANUFACTURER RESERVES THE RIGHT TO MAKE CHANGES IN DESIGN OR DIMENSIONS WITHOUT FORMAL NOTICE

**AMERICAN SPECIALTIES, INC.**

441 Saw Mill River Road, Yonkers, NY 10701 (914) 476-9000
www.americanspecialties.com

MODEL No: 8206

ISSUED: 1-87

REVISED: 12-05

L-SHAPED PHENOLIC FOLD-UP SHOWER STALL SEAT (pg 2 of 2)**MATERIALS**

Tube: 18 gauge (.048 in. <1.22mm> thick), type 304 stainless steel 1" (25mm) dia. and 1-1/4" (32mm) square. Unitized all welded construction. Exposed surfaces have satin finish. Edges and corners are radiused and burr free. Frame is field reversible for either left or right hand.

Flange: 3/16" (4.8mm), type 304 stainless steel. Exposed surfaces have satin finish. Edges are radiused and burr free.

Bracket: 16 gauge (.06 in. <1.52mm> thick), type 304 stainless steel. Exposed surfaces have satin finish. Edges and corners are radiused and burr free.

Seat: Solid Phenolic ("L" shape) 1/2" x 33" x 21-1/2" (13mm x 838mm x 546mm) nonporous seat has ivory colored top and bottom surfaces with semi-gloss finish and black edges with radiused and burr free corners. Seat top shall be field reversible for left or right hand. Seat top shall have slots for water drainage and user slip resistance. Mounting hardware is smooth stainless steel dome head carriage bolts with acorn nuts on bottom.

Spring: Stainless steel wire, type 304, 1" body dia. (25 mm) x 3" body length (76mm) x .075" diameter (1.91mm).

OPERATION

Fold-up Shower Seat requires only one hand operation to manually lower to horizontal position for use or raise for departure and arrival. Guide bracket with spring detent prevents seat from dropping and provides positive support in usage position as well as spring locked storage position.