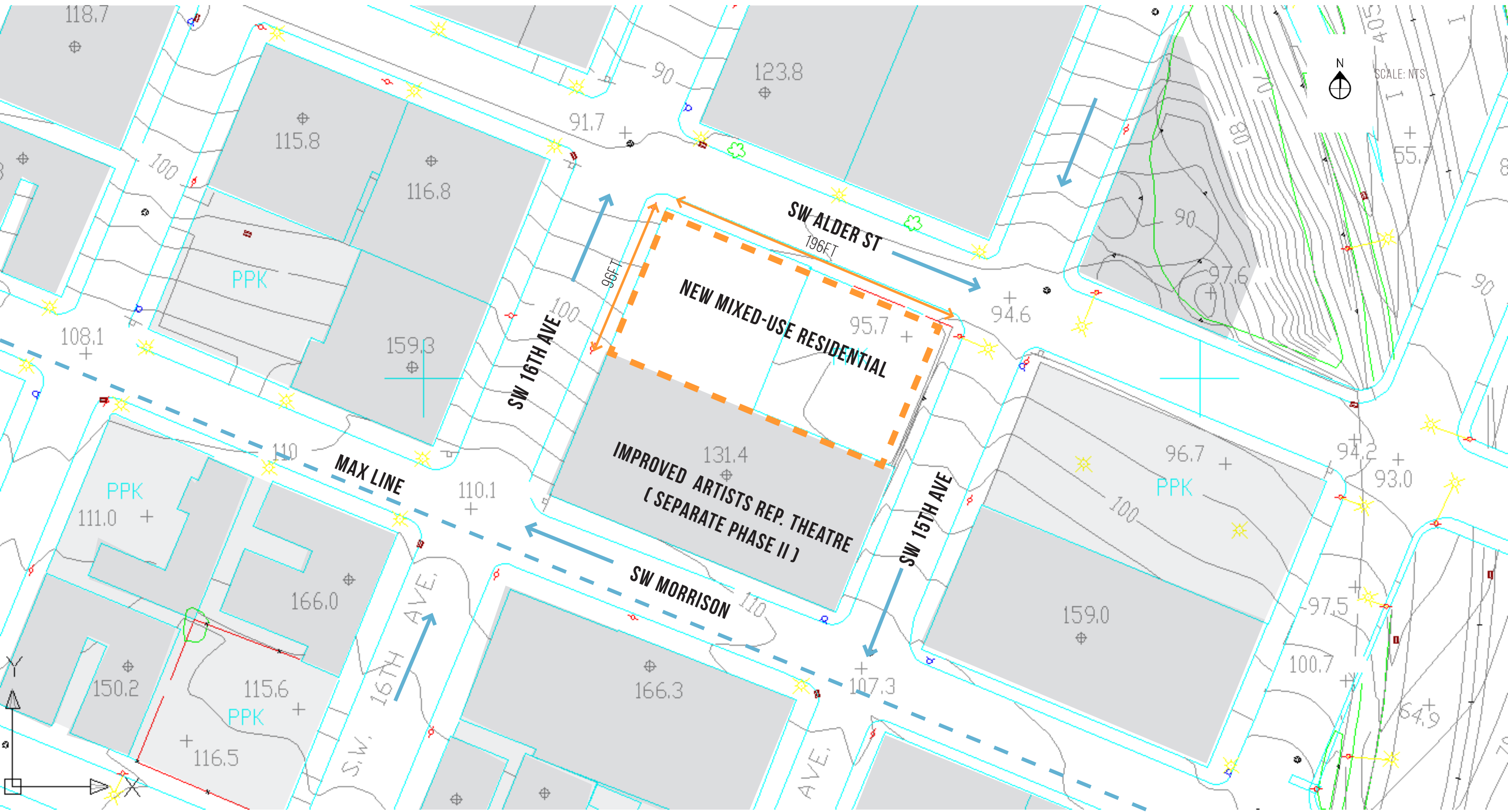


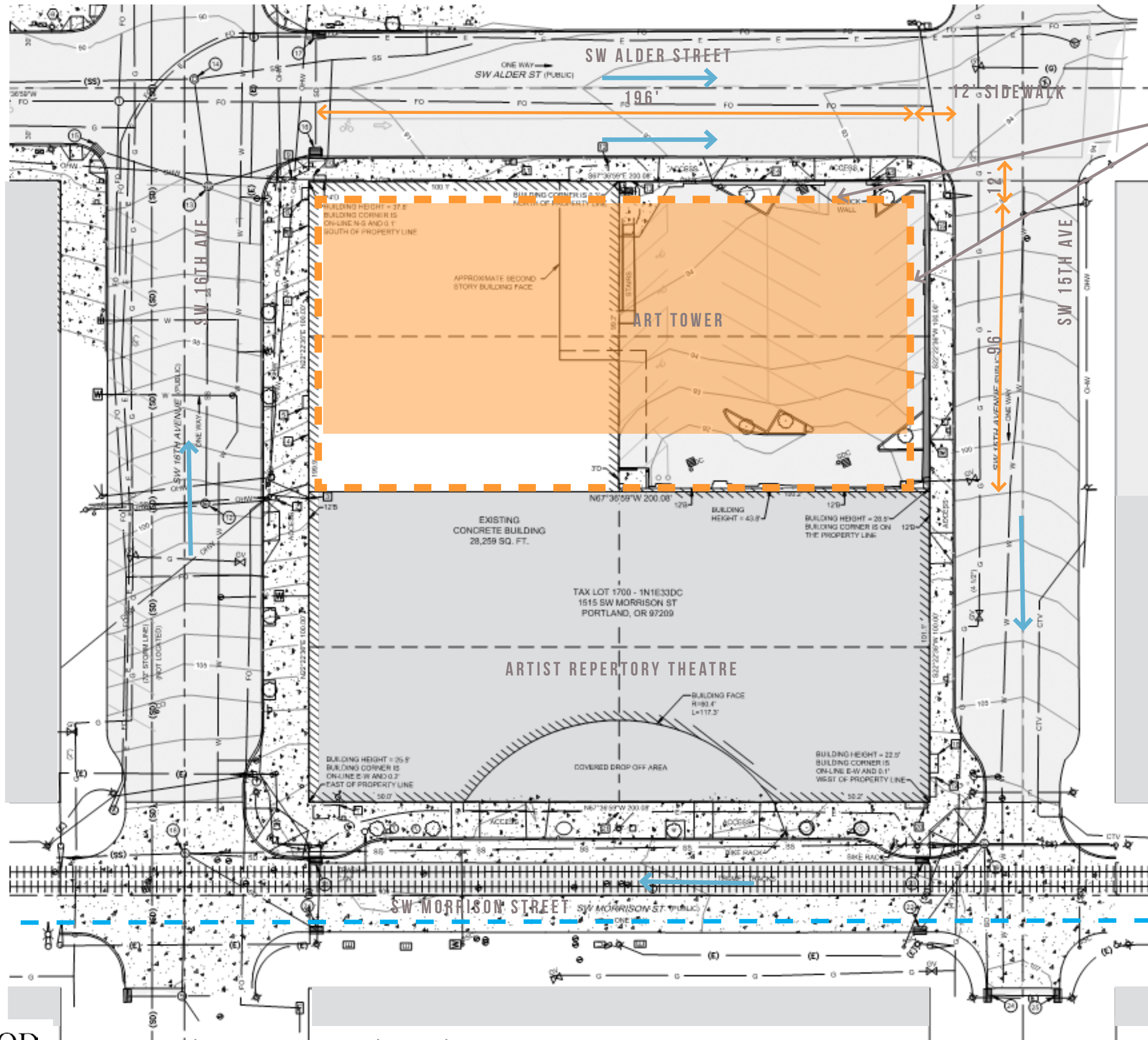
ART TOWER | DESIGN ADVICE REQUEST | 6.21.18



Pictometry Bird's Eye ©







PBOT REQUIRED
4FT SIDEWALK
DEDICATIONS ON SW
ALDER ST & 15TH AVE



16TH & ALDER LOOKING WEST



15TH & ALDER LOOKING EAST



15TH LOOKING NORTH



16TH LOOKING NORTH



ALDER LOOKING WEST



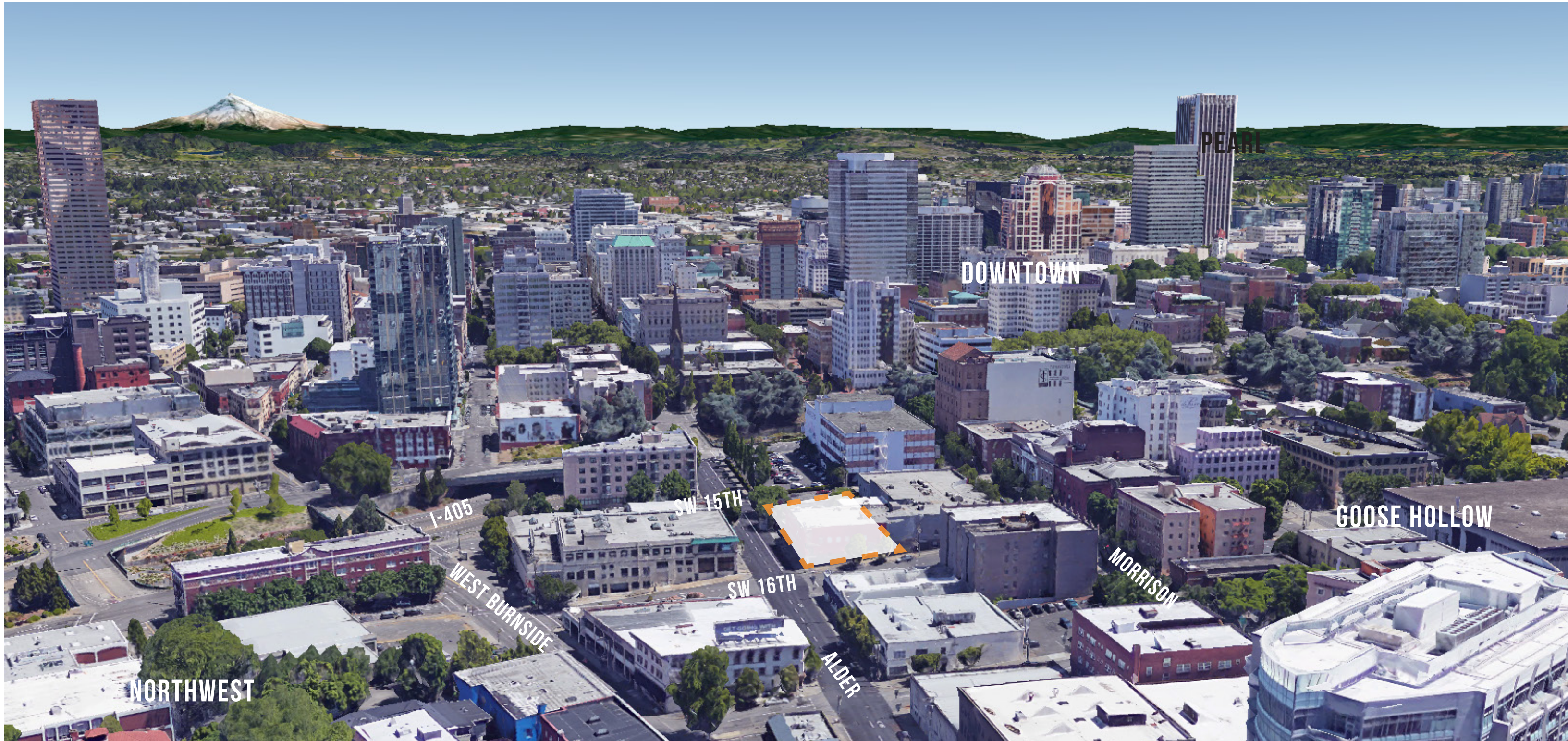
ALDER MID BLOCK



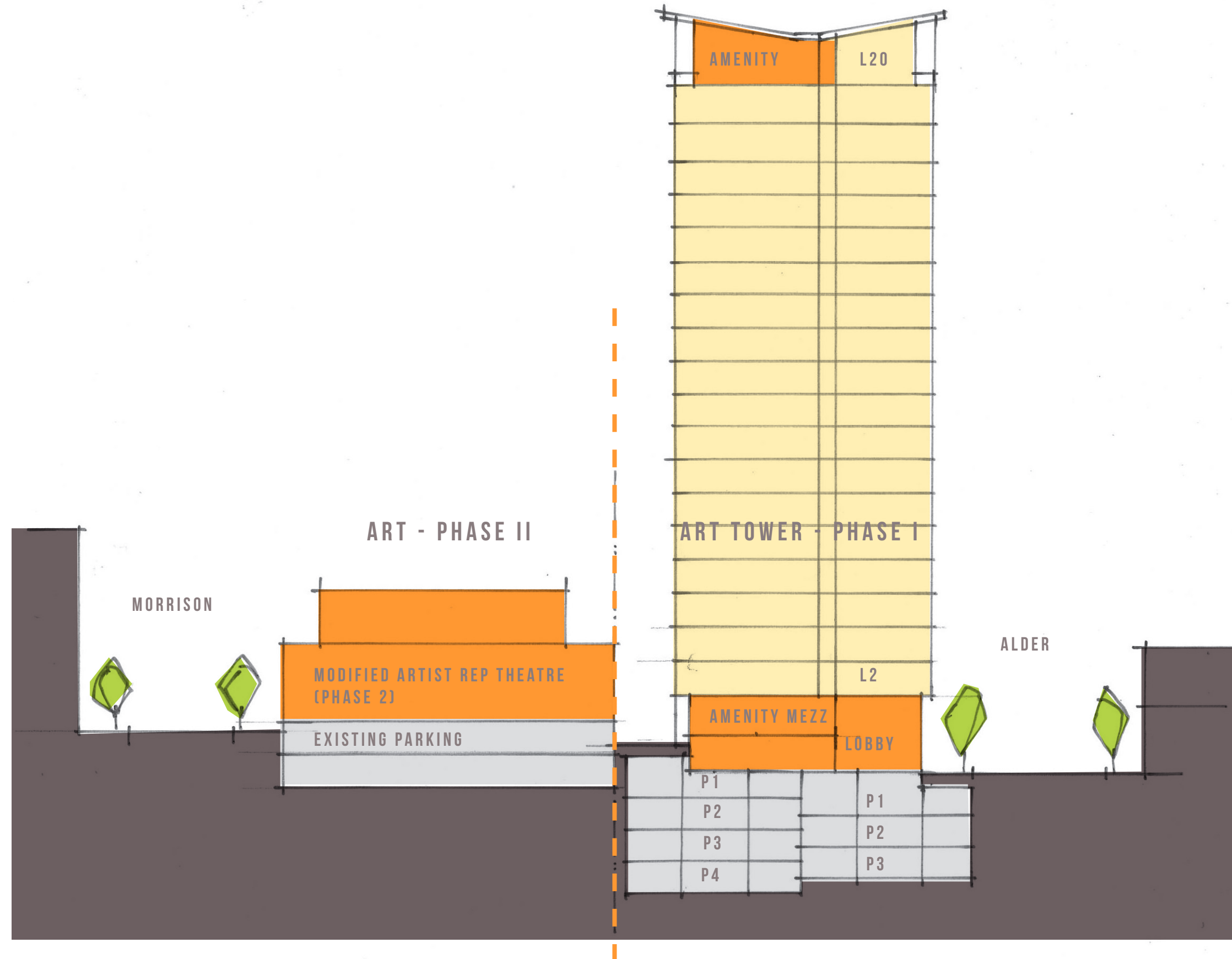
MORRISON AND 15TH

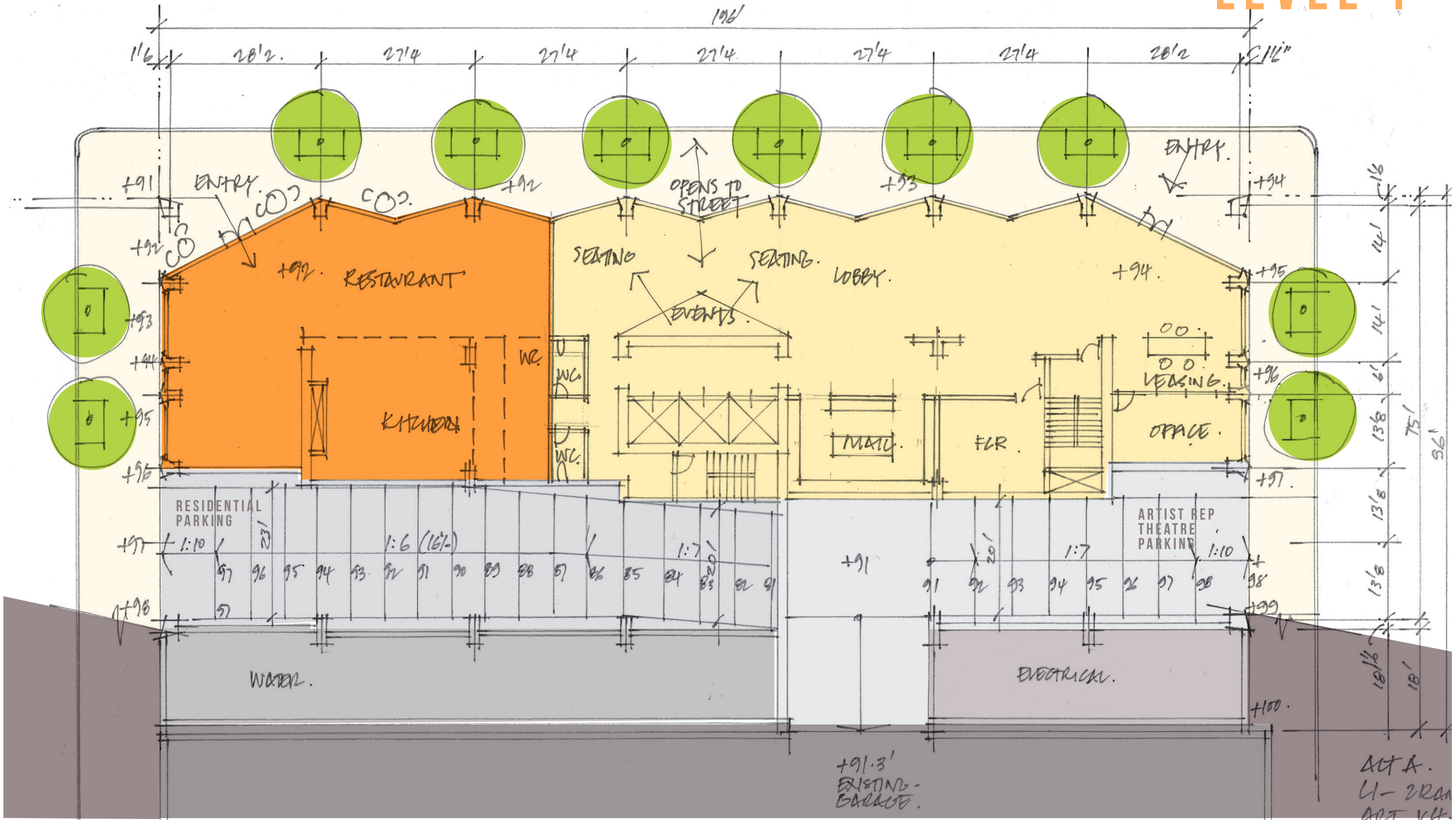


YAMHILL AND 15TH

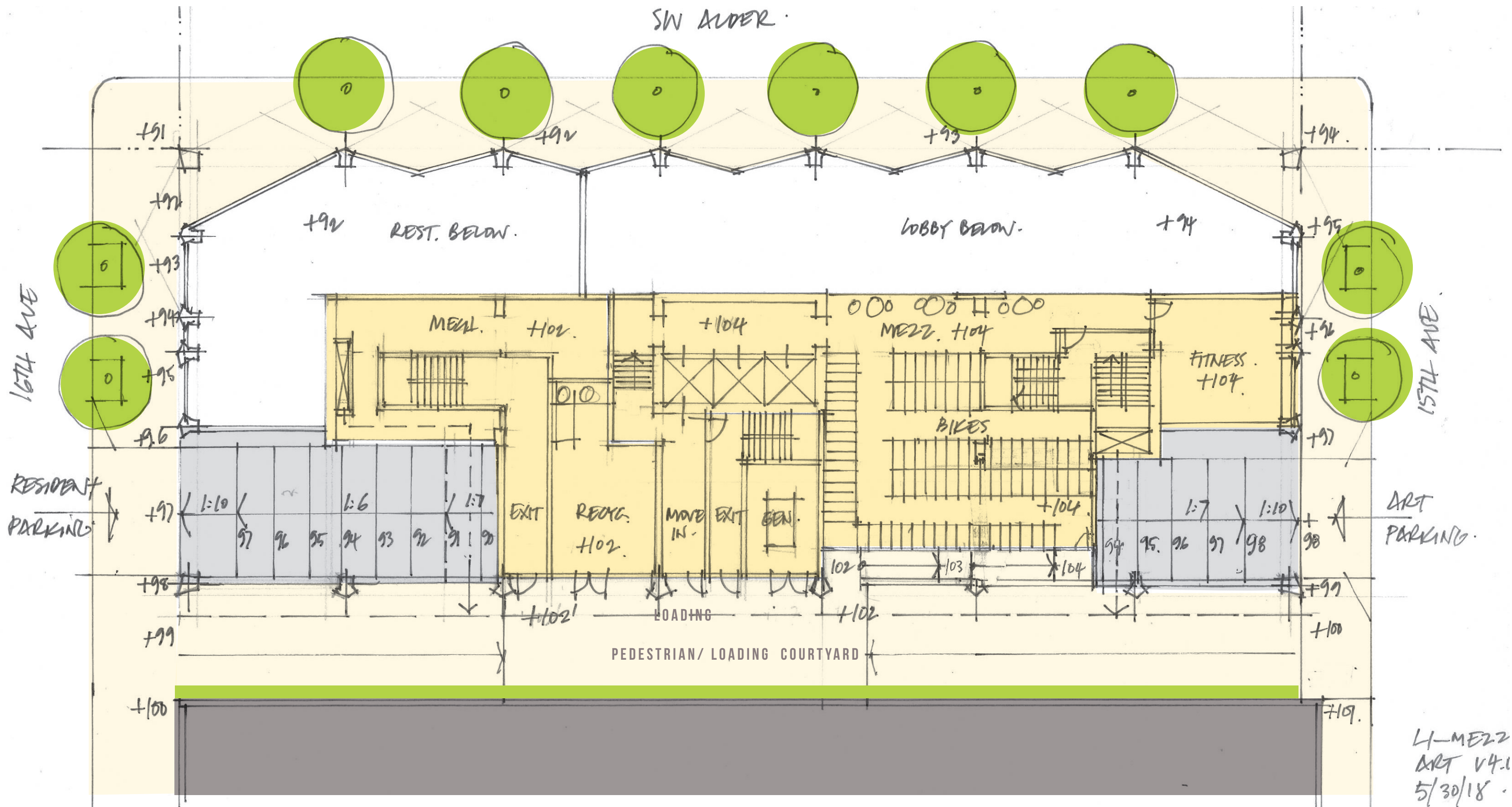


CONCEPT SECTION

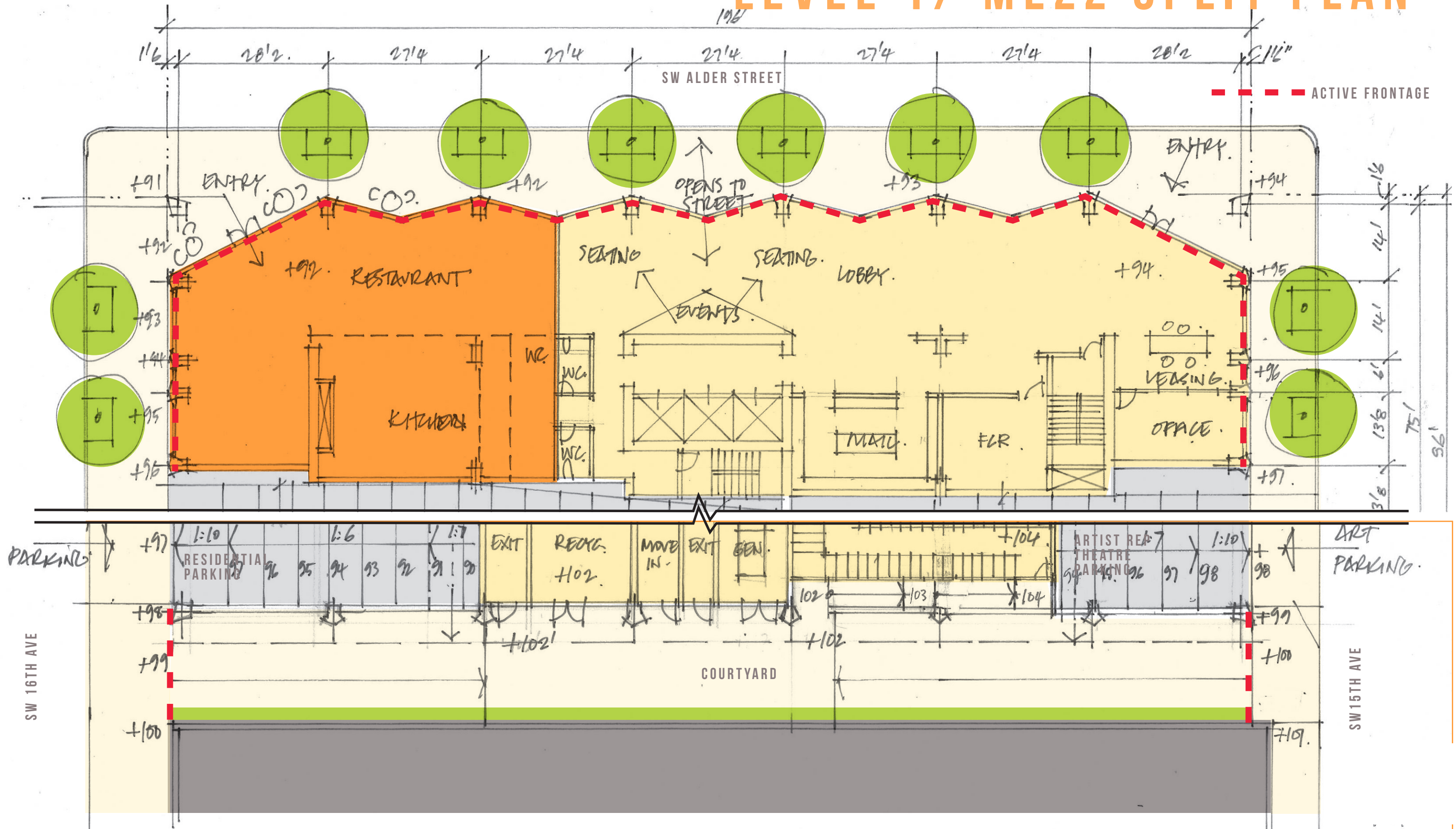




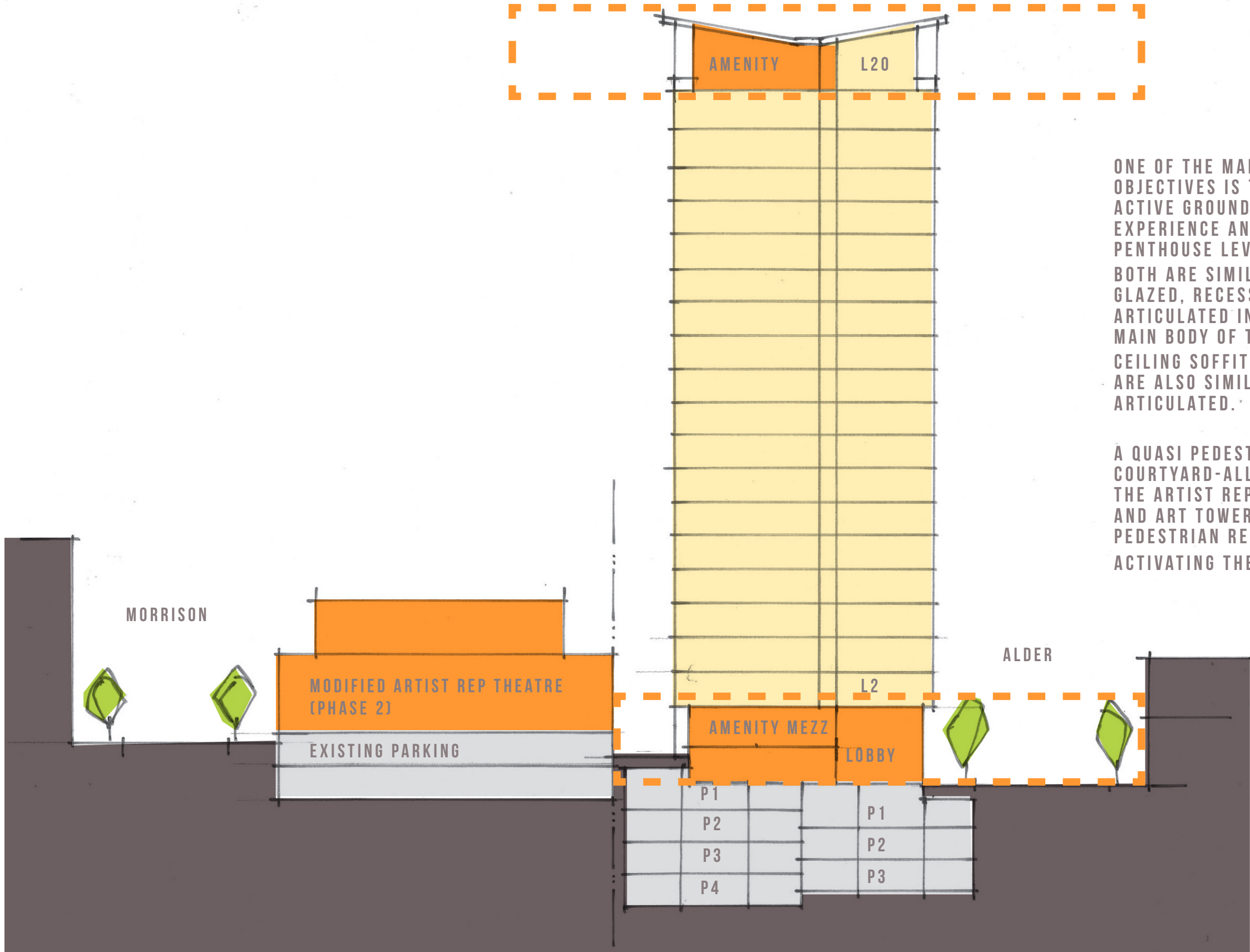
MEZZANINE



LEVEL 1 / MEZZ SPLIT PLAN



CONCEPT SECTION



ONE OF THE MAIN DESIGN OBJECTIVES IS TO CREATE A HIGHLY ACTIVE GROUND LEVEL STREET EXPERIENCE AND EQUALLY ACTIVE PENTHOUSE LEVEL. BOTH ARE SIMILARLY FULLY GLAZED, RECESSED, AND HIGHLY ARTICULATED IN CONTRAST TO THE MAIN BODY OF THE BUILDING. CEILING SOFFITS OF BASE AND TOP ARE ALSO SIMILARLY COLORED AND ARTICULATED.

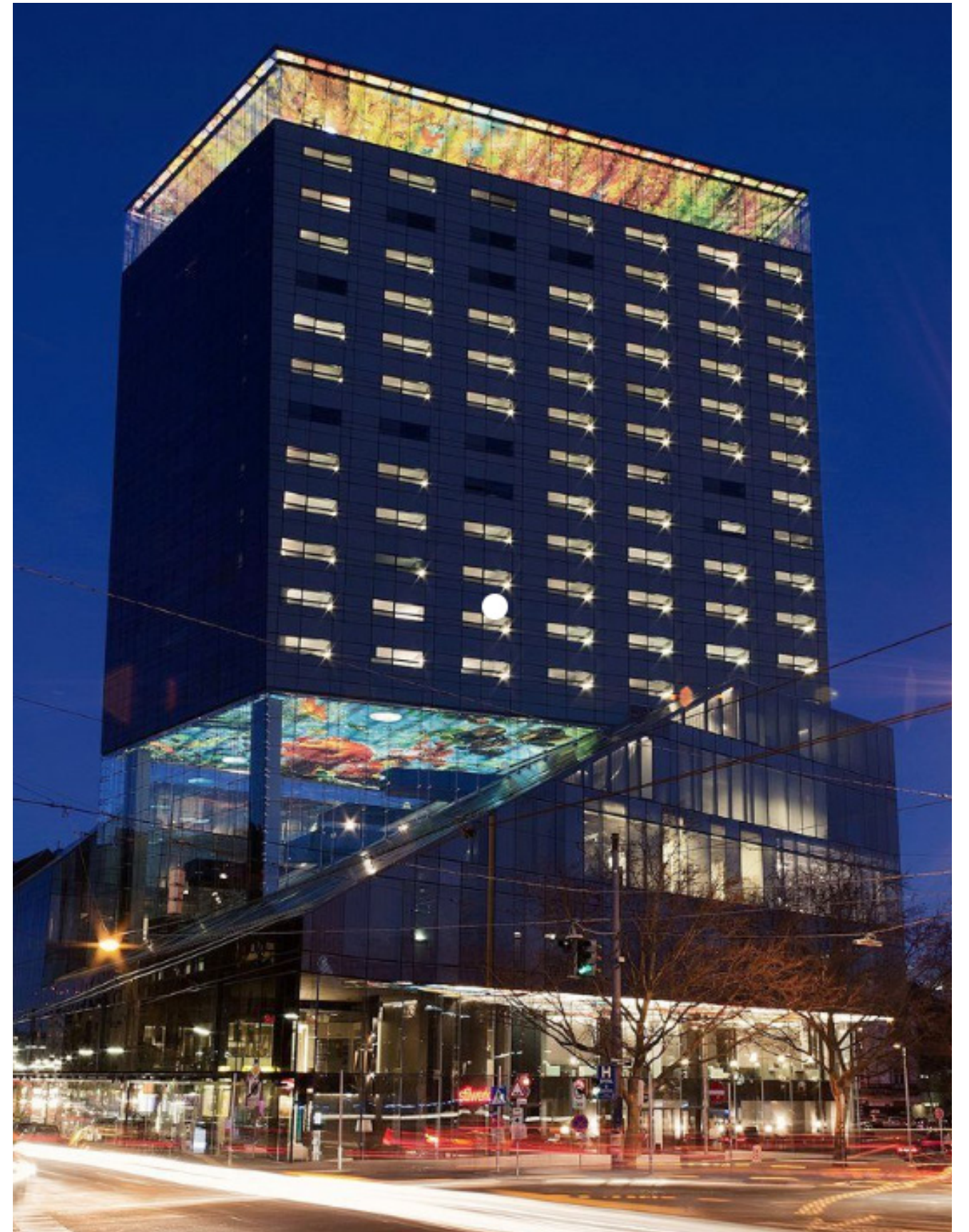
A QUASI PEDESTRIAN/LOADING COURTYARD-ALLEY RUNS BETWEEN THE ARTIST REPERTORY THEATRE AND ART TOWER, EXTENDING THE PEDESTRIAN REALM AND FURTHER ACTIVATING THE BASE.

CONCEPT | 'ACTIVE BASE & TOP' PRECEDENT

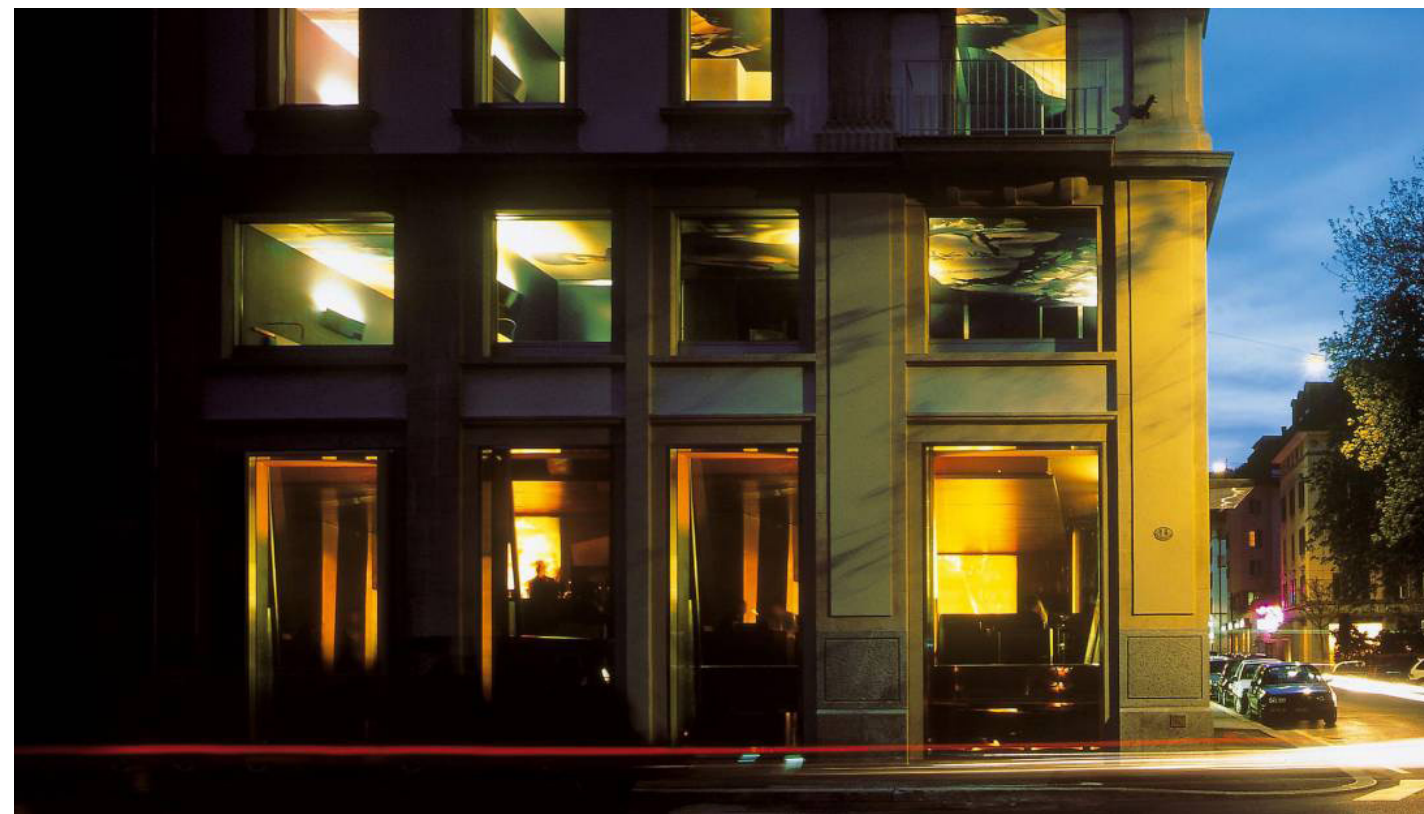


HOTEL SOFITEL VIENNA STEPHANSDOM - JEAN NOUVEL

'BASE' PRECIDENT - 185 PARK ST LONDON - ERIC PARRY

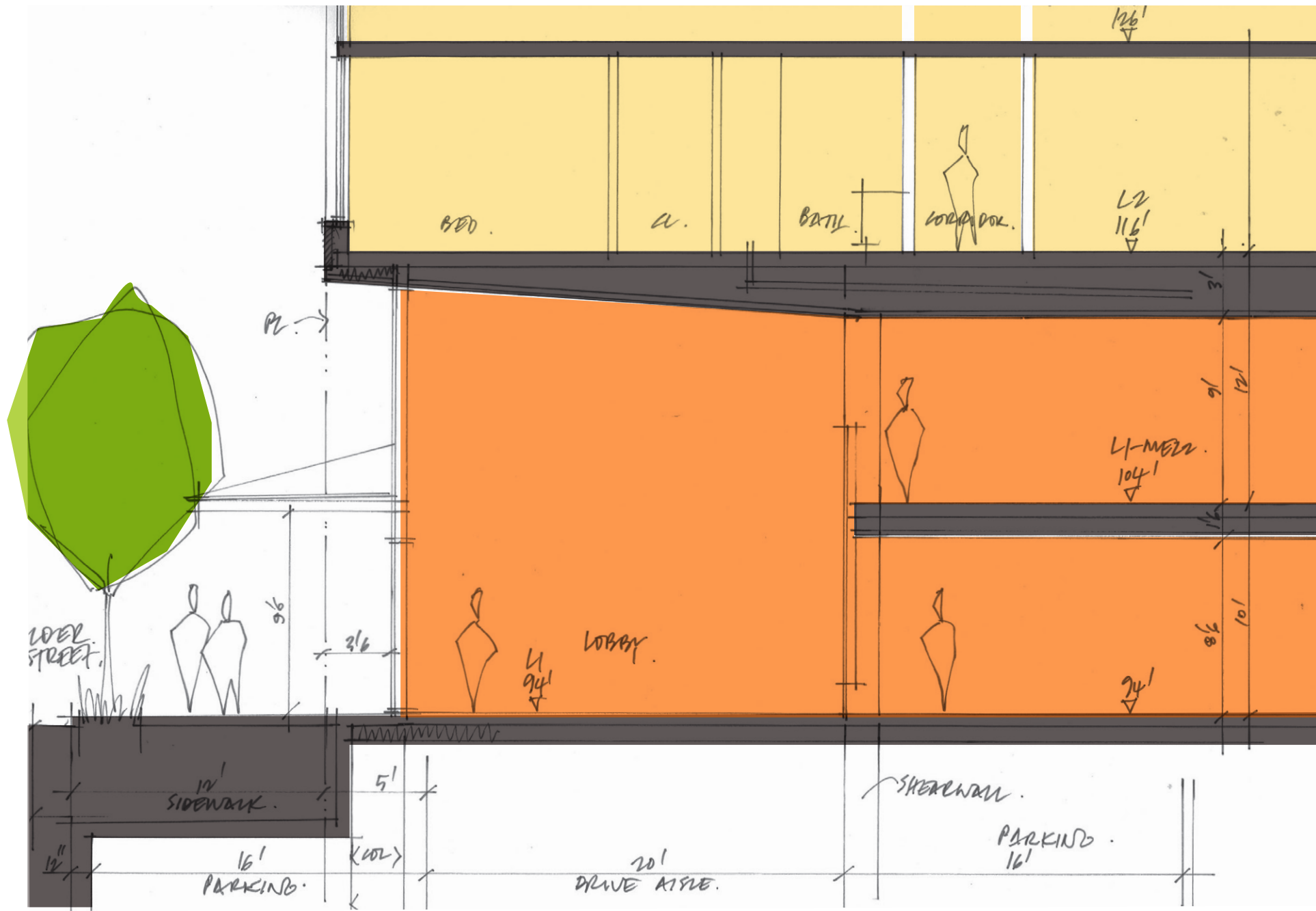


OXO TOWER, LONDON - ALBERT MOORE - LIFSHULTZ DAVIDSON SANDILANDS

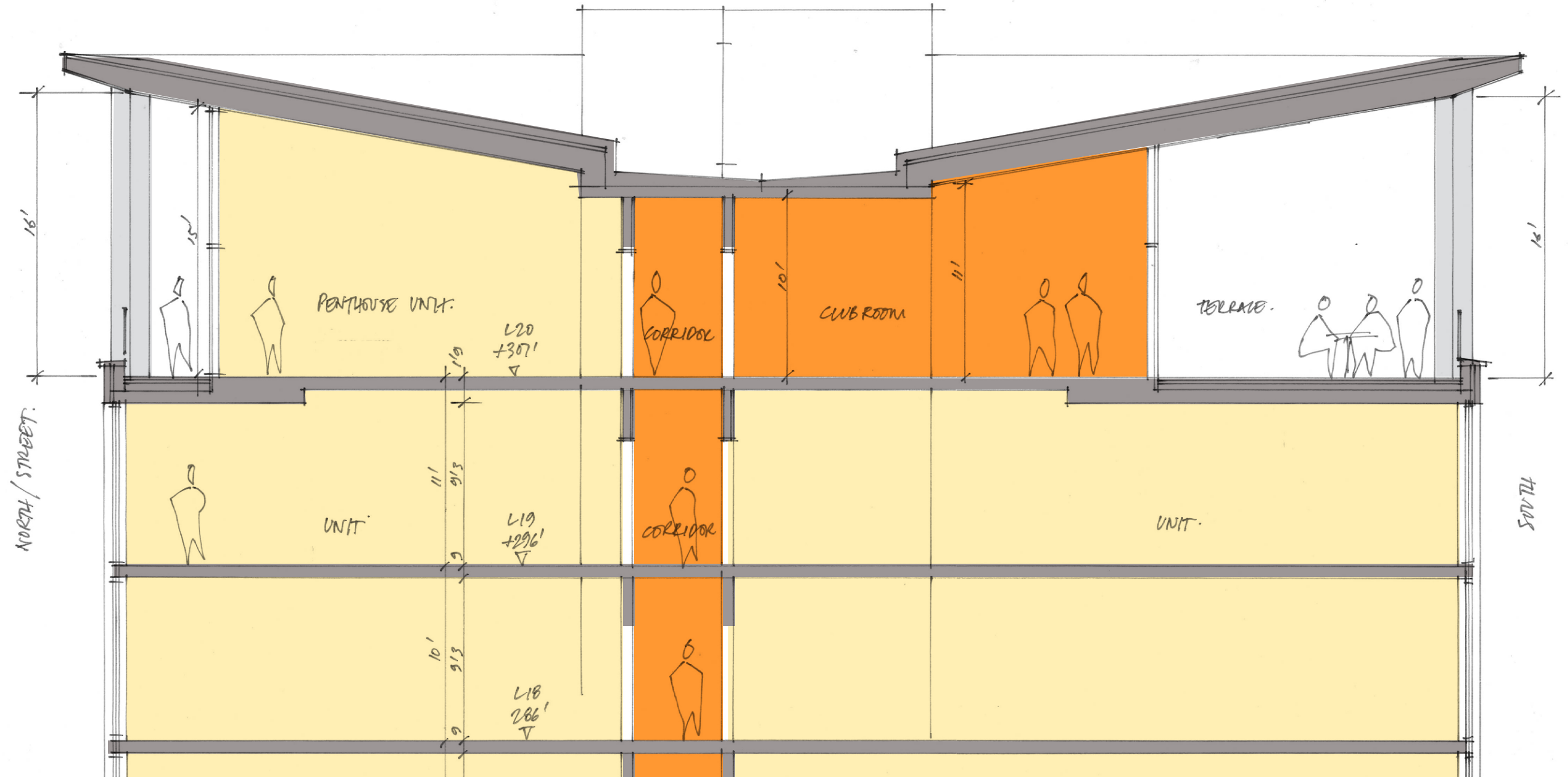


THE HOTEL, LUCERNE - JEAN NOUVEL

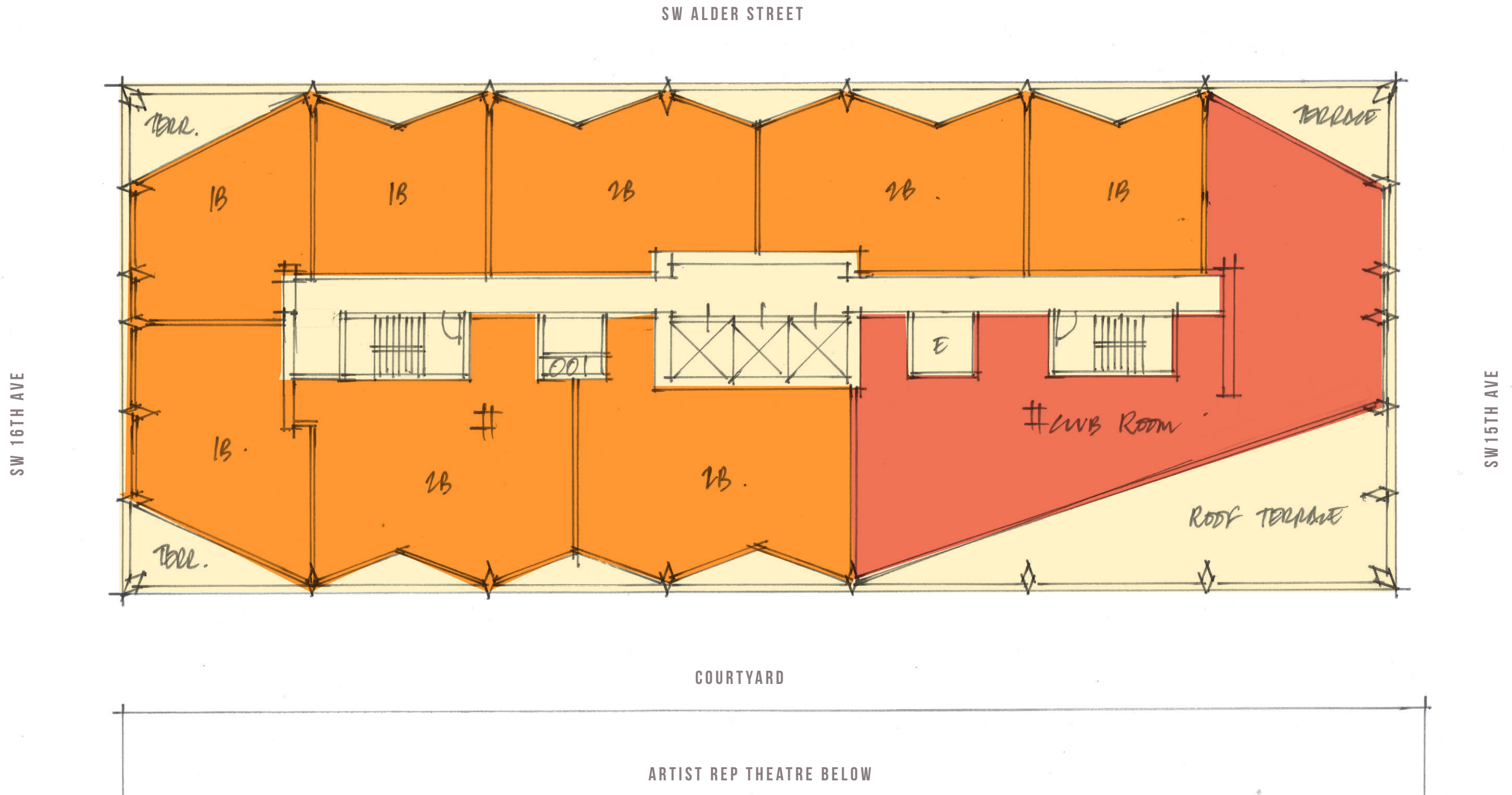
CONCEPT | 'ACTIVE BASE'



CONCEPT | 'ACTIVE TOP'



PENTHOUSE 'TOP' LEVEL



TYPICAL FLOOR



ARTIST REP THEATRE BELOW



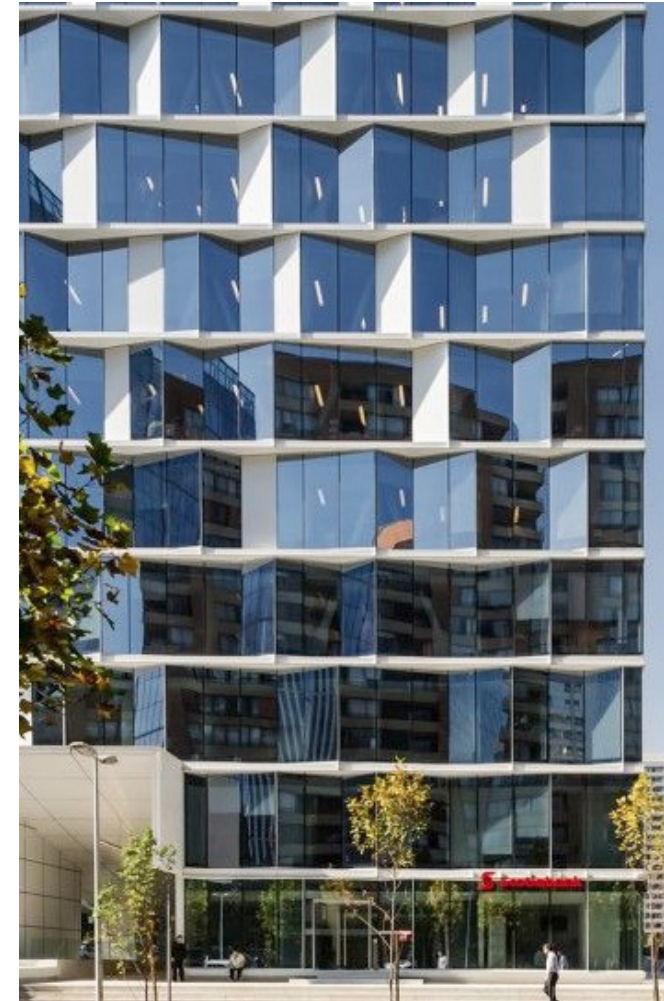
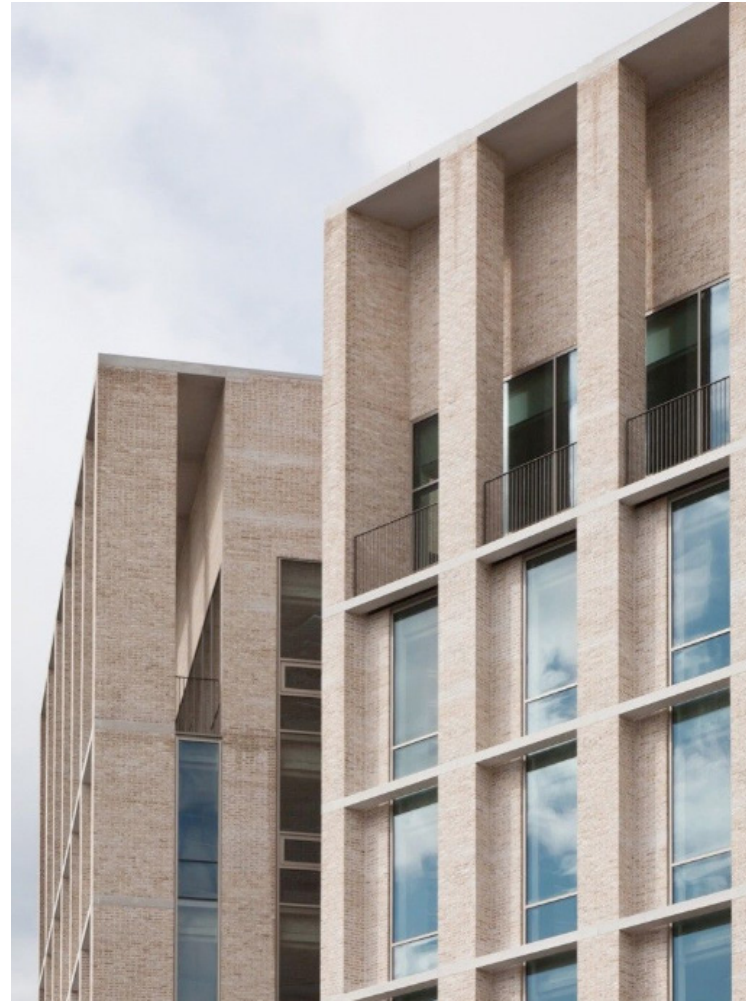








CONCEPT | PATTERN & MATERIALS









CONCEPT | SIDEWALK LEVEL





CONCEPT | SIDEWALK



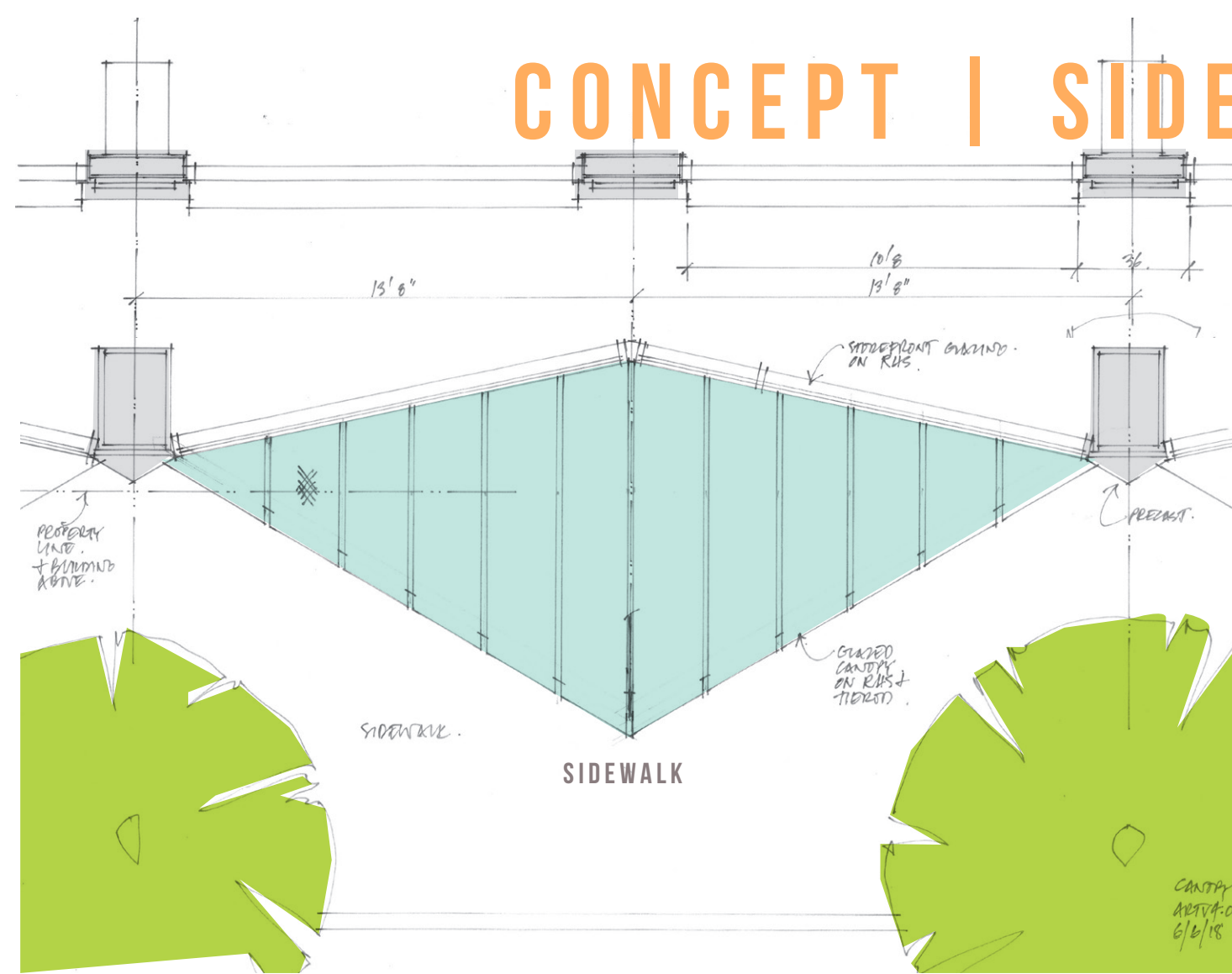
CONCEPT | SIDEWALK



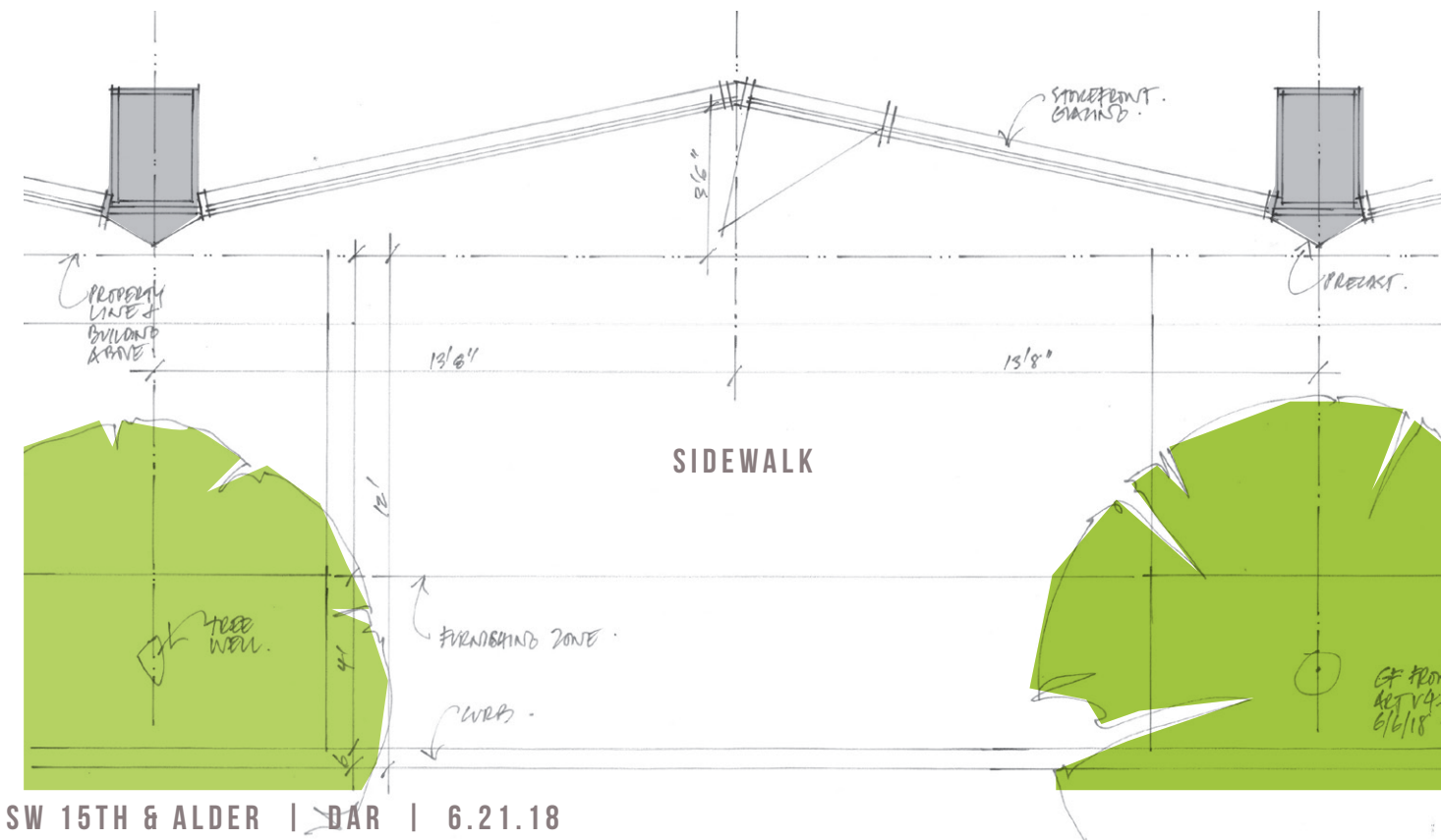
CONCEPT | SIDEWALK CANOPY

UPPER FLOOR LEVEL

GROUND FLOOR CLERESTORY LEVEL



GROUND FLOOR LEVEL



CONCEPT | COURTYARD



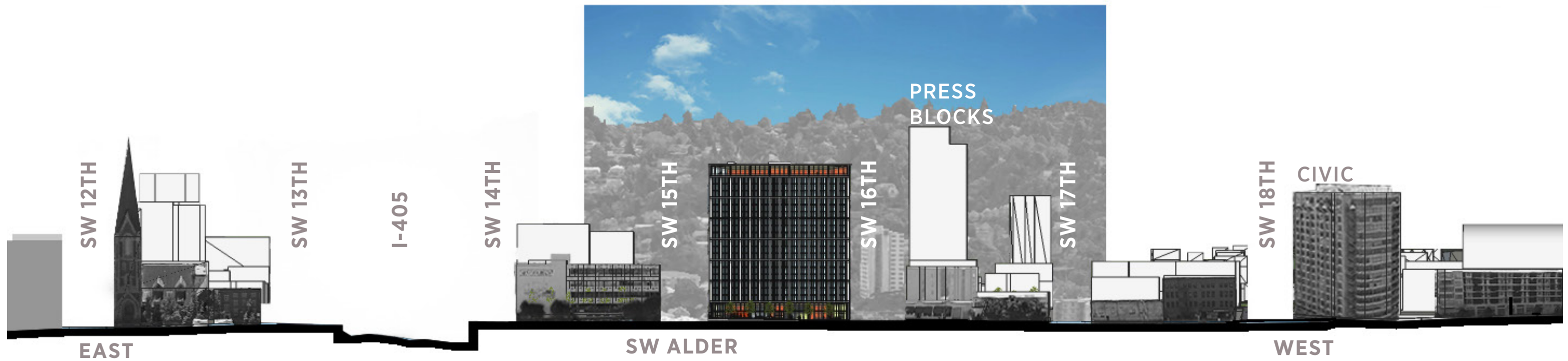


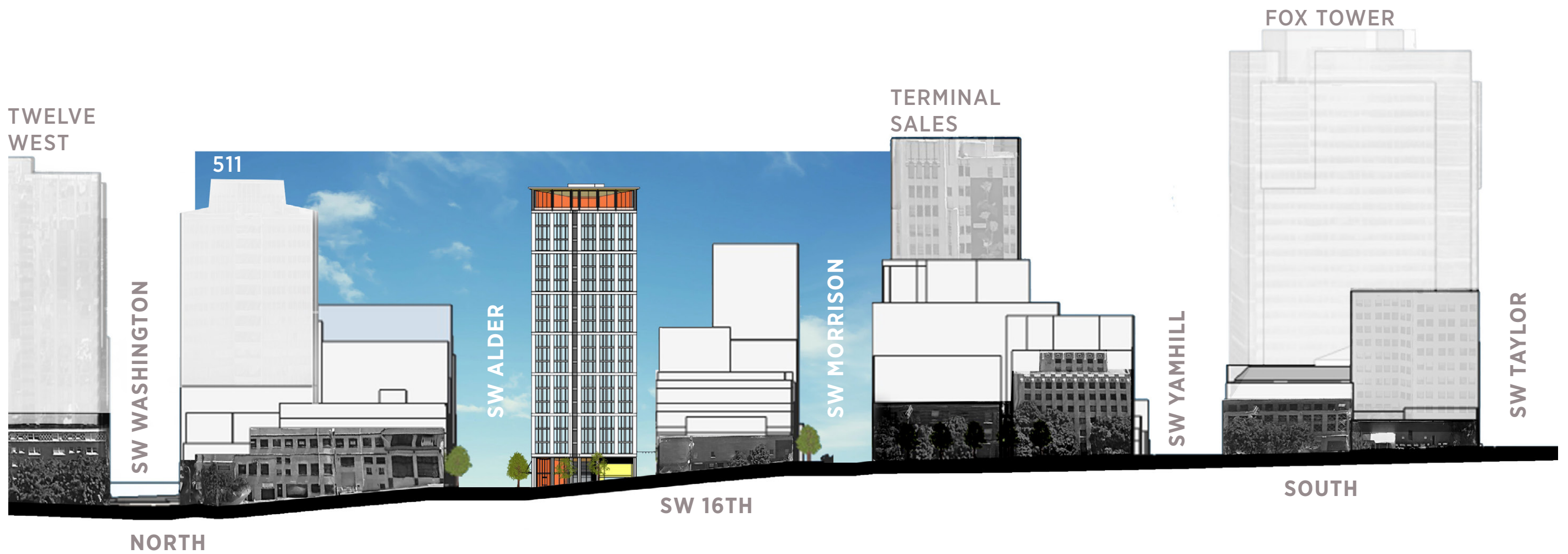
CONCEPT | COURTYARD ALTERNATES



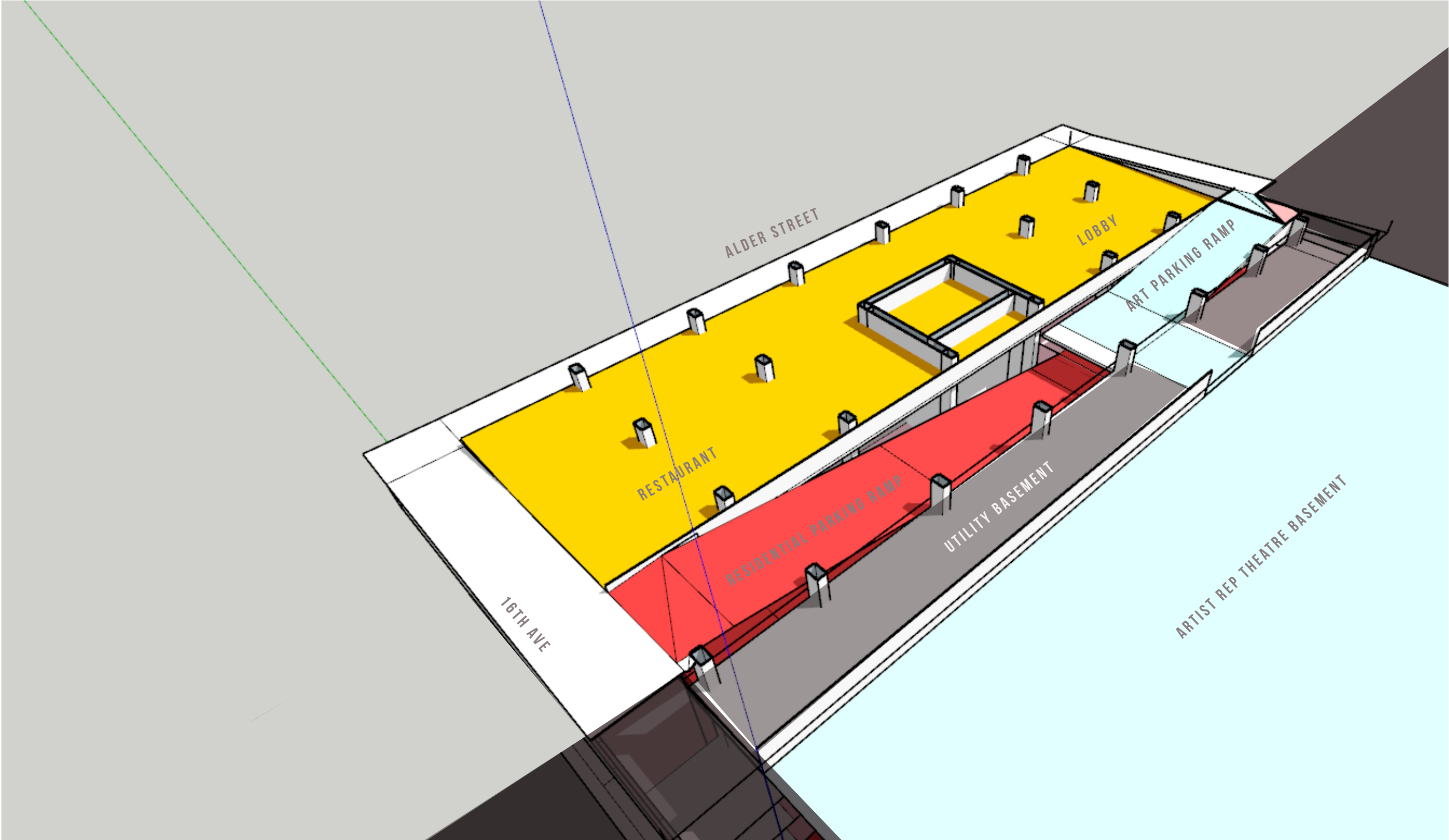




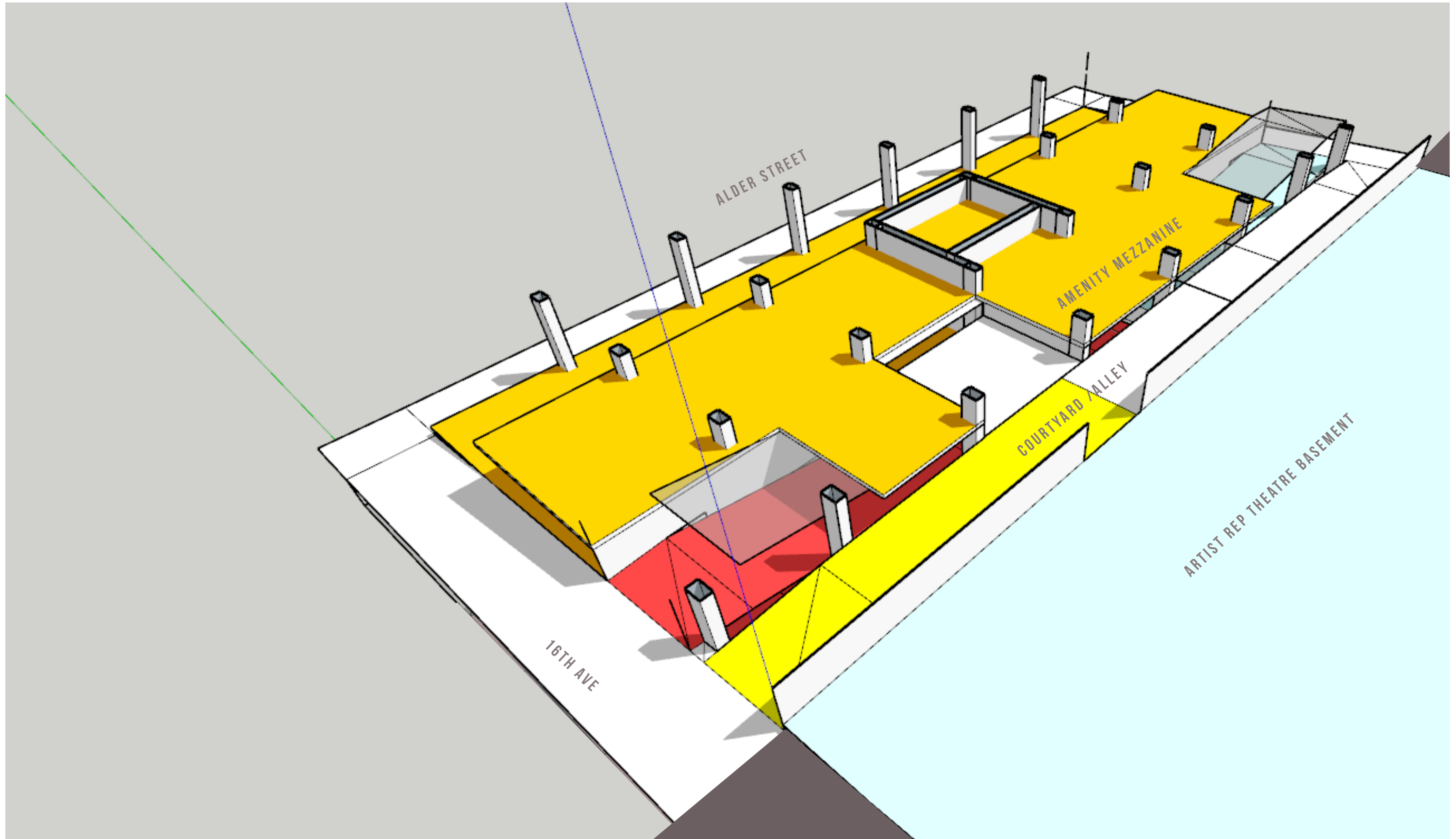




LEVEL 1 DIAGRAM



MEZZANINE DIAGRAM



PARKING RAMP DIAGRAM

