



## Leach Garden Upper Garden Project

**Ross Swanson**, Capital Project Manager III

**Bernie Kerosky**, Prosper Portland Project Manager

**Councilor Shirley Craddick**, METRO

**David Porter**, Executive Director Leach Garden



# Background: Development Plan

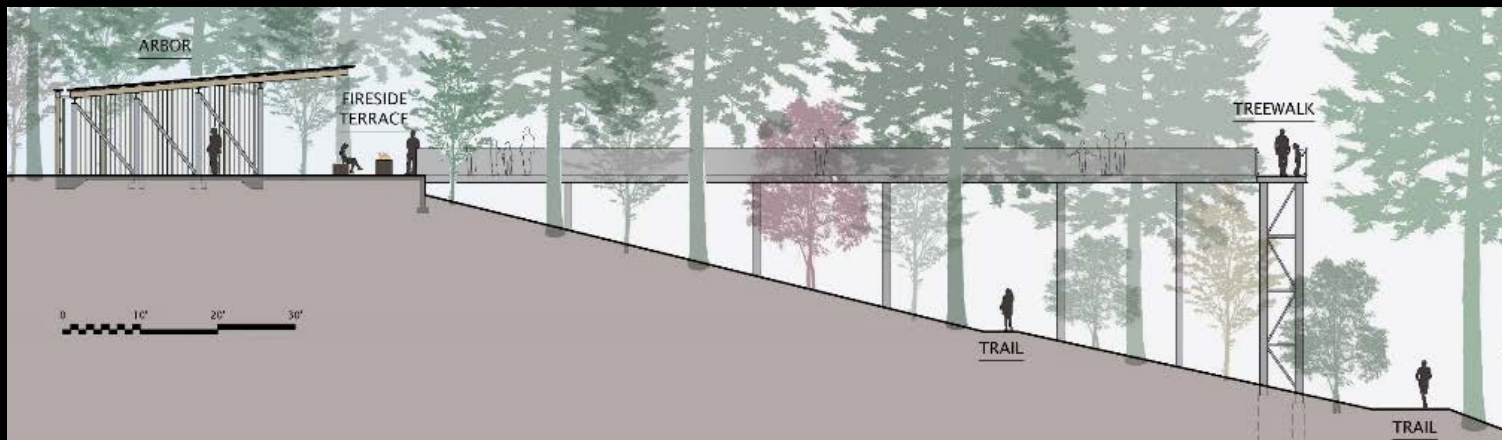
189013





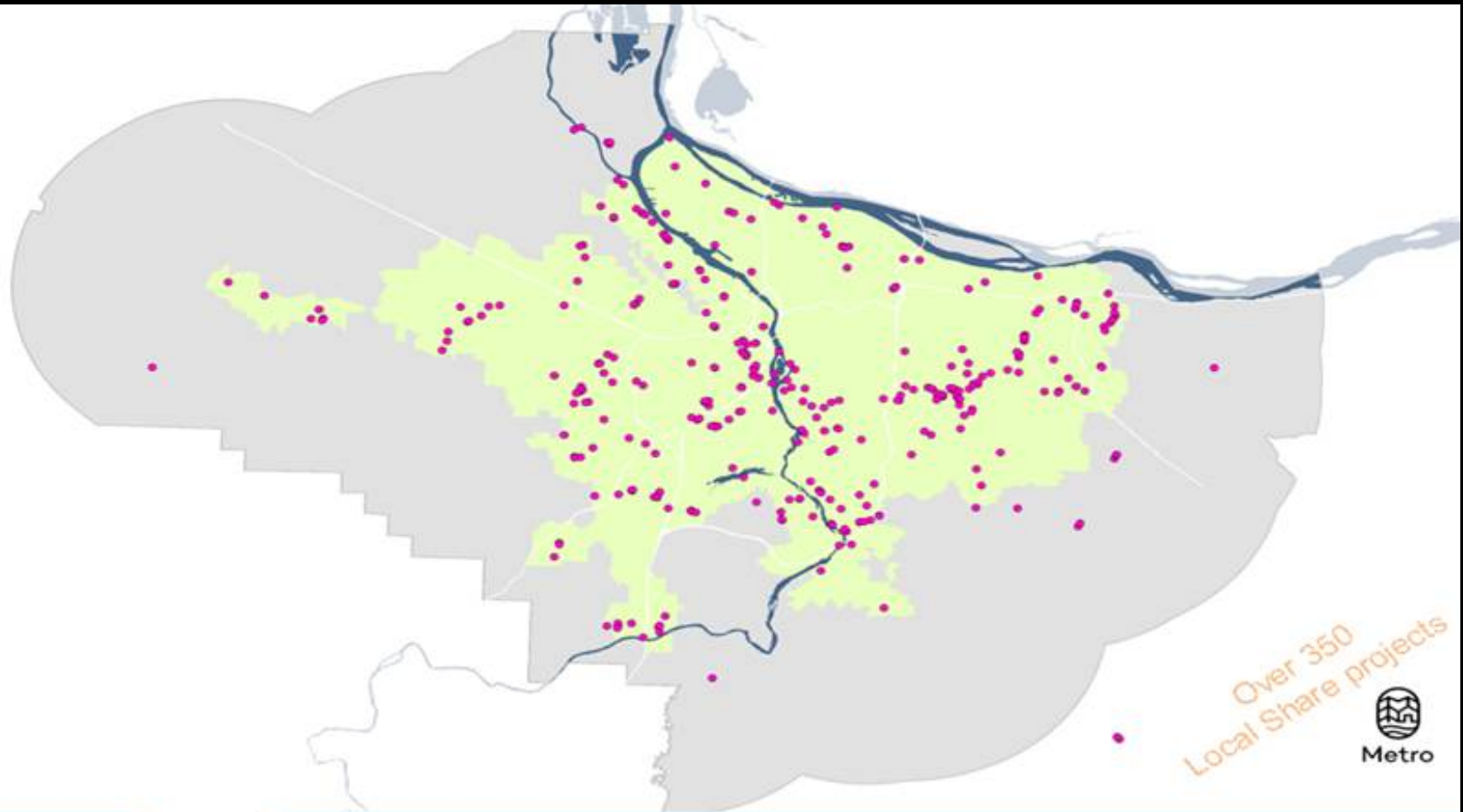
# Scope: Phase One Project

189013



# New Revenue Sources:

Parks and Recreation (PP&R SDC),	\$5.56M
Leach Garden Friends (Capital Campaign),	\$1.26M
METRO (Nature in the Neighborhoods),	\$ 188K
<u>Prosper Portland (Lents URA),</u>	<u>\$1.89M</u>
Added Revenue	\$8.9M total



Bond measure's partner investments  
93% of projects and 90% of dollars spent within UGB







# Why Are We Here Today?



Accept a \$188,000 award from Metro Nature in Neighborhoods Capital Grants Program for improvements at Leach Botanical Garden (Ordinance)



**PORTLAND PARKS & RECREATION**

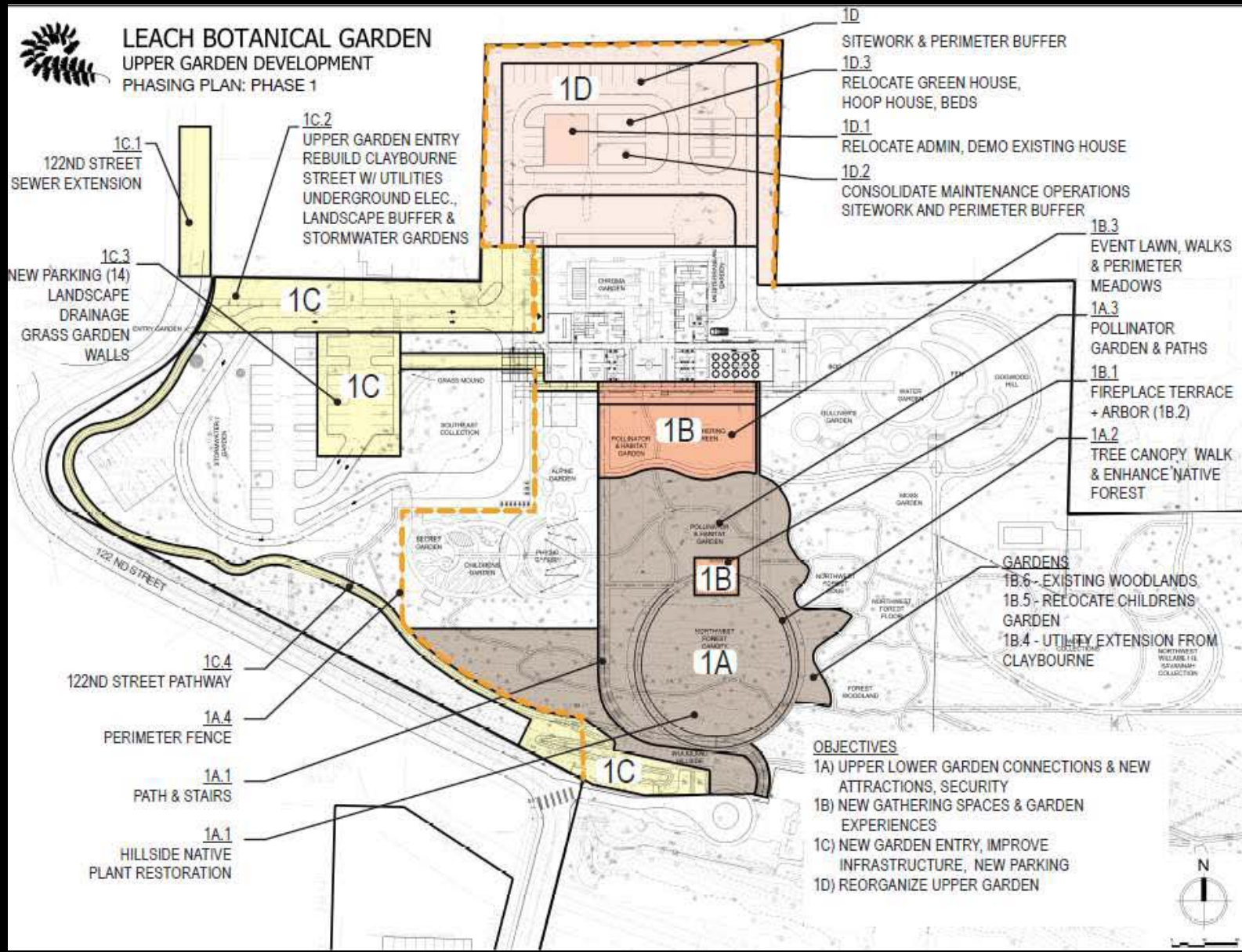
Healthy Parks, Healthy Portland



NEXT SLIDES ARE FOR DISCUSSION: NOT NECESSARILY  
PART OF THE PRESENTATION

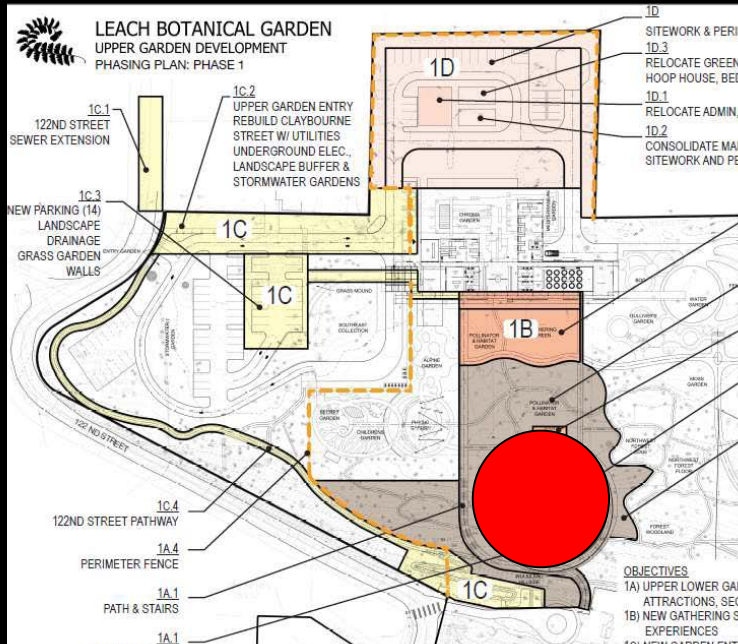


# Background: Phase One Project



# Aerial Tree Walk

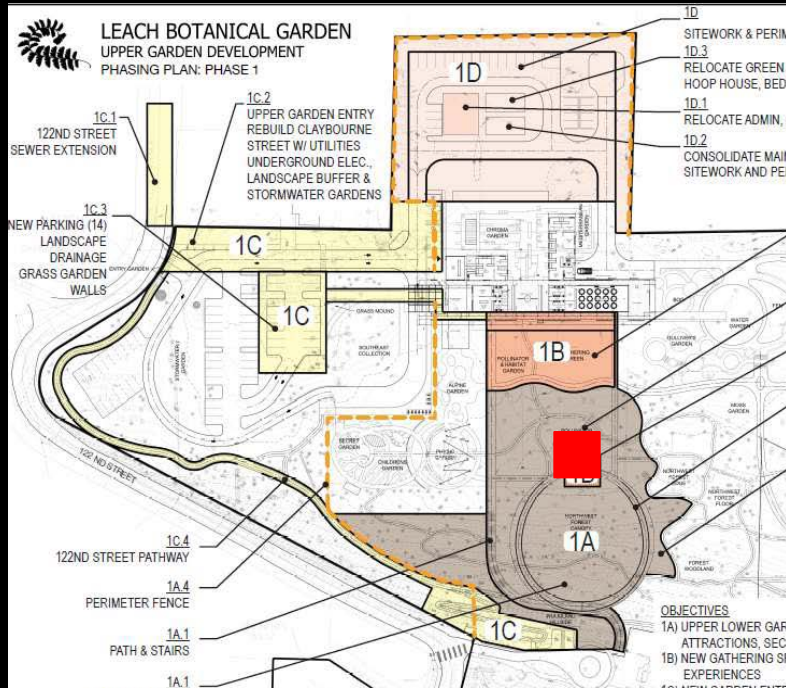
189013





# Fireplace Terrace / Arbor

189013





# Pollinator Garden

189013

