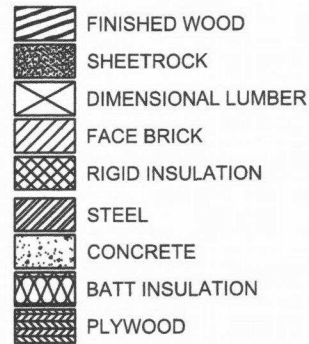


## SYMBOL LEGEND



DENOTES BLOCKING OR SHIM. NOT NECESSARILY CONTINUOUS

CAULKING AND BACKER ROD

WINDOW TYPE  
 ELEVATION LOCATION / VIEWPOINT  
 ELEVATION SHEET NUMBER

DETAIL NUMBER  
 DETAIL NAME  
 DETAIL TAG  
 SCALE: 1/4" = 1'-0"  
 ARCH REF  
 ARCHITECTURAL REFERENCE

DETAIL NUMBER  
 ELEVATION BUBBLE  
 SIDE NOTES  
 PAGE NUMBER

WINDOW TYPE  
 WINDOW TAG  
 SCALE  
 WINDOW QUANTITY

DOOR TAG

DOOR NUMBER

GLASS TAG  
 GLASS TYPE

## ABBREVIATIONS

A/C - ACCESS CONTROLLED  
AFF - ABOVE FINISH FLOOR  
BOH - BOTTOM OF HORIZONTAL  
COH - CENTER LINE OF HORIZONTAL  
DIM - DIMENSION  
DLO - DAYLIGHT OPENING  
DO - DOOR OPENING  
ELEV - ELEVATION  
FF - FINISH FLOOR  
GC - GENERAL CONTRACTOR  
MO - MASONRY OPENING  
NFD - NET FRAME DIMENSION  
NTS - NOT TO SCALE  
RO - ROUGH OPENING  
SIM - SIMILAR  
TOH - TOP OF HORIZONTAL  
UNO - UNLESS NOTED OTHERWISE

# STORQUEST PORTLAND LEASING OFFICE 4322 BEAVERTON HILLSDALE HWY PORTLAND, OR 97221



RENEWS: 6-30-2018

WEST  
COAST  
CAD  
SERVICE

QUALITY SHOP DRAWINGS  
AT AFFORDABLE PRICES  
chad@westcoastcad.com  
503-706-1353

GLAZING CONTRACTOR

ALL STAR GLASS  
3649 KASHMIR WAY SE  
SALEM, OR 97302

## HARDWARE SCHEDULE

- HARDWARE GROUP 1
- CASCADE ALUMINUM SURFACE MOUNT CLOSERS
  - CASCADE ALUMINUM TOP AND BOTTOM OFFSET PIVOTS
  - CASCADE ALUMINUM ADA COMPLIANT PUSH/PULLS
  - ADAMS RITE MS1850 THREE POINT LOCK
  - KEYED CYLINDER INTERIOR/EXTERIOR (CONSTRUCTION CYLINDERS)
  - CASCADE ALUMINUM ADA COMPLIANT THRESHOLD
  - CASCADE ALUMINUM STANDARD WEATHER-STRIPPING
  - DOOR TO REMAIN UNLOCKED WHEN BUILDING OCCUPIED STICKER

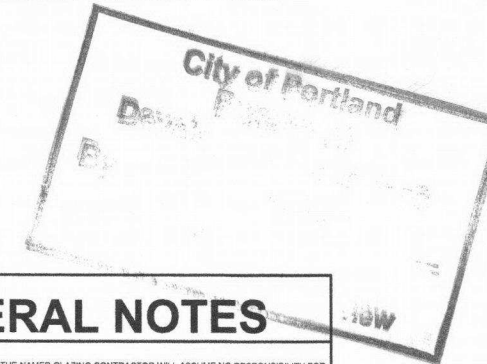
## DOOR SCHEDULE

DOOR #	SIZE	STILE	SWING	HDWR GRP	GLASS TYP
106A	6'0" X 7'0"	NARROW	OUT	1	GL2

## DRAWING INDEX

PAGE #	TITLE
1	COVER SHEET
2	FLOOR PLAN
3	ELEVATIONS
4	ELEVATIONS
5	ELEVATIONS
6	DETAILS
7	DETAILS
8	DETAILS

City of Portland  
Bureau of  
Development Services  
By A. Gunkig Date 4/30/18  
Approved by  
Planning & Zoning Review



## FINISH SCHEDULE

- CLEAR ANODIZED
- BRONZE ANODIZED
- BLACK ANODIZED
- PAINTED/OTHER FINISH

DESCRIPTION:

\_\_\_\_\_  
\_\_\_\_\_  
\_\_\_\_\_  
\_\_\_\_\_  
\_\_\_\_\_

## GLASS SCHEDULE

GL1	1/4" SOLARBAN 60, ANNEALED 1/2" AIR 1/4" CLEAR, ANNEALED
GL2	1/4" SOLARBAN 60, TEMPERED 1/2" AIR 1/4" CLEAR, TEMPERED

## PRODUCTS USED

- STOREFRONTS:
- CASCADE ALUMINUM
  - 450-TCS CENTER GLAZED
  - THERMALLY BROKEN
- ENTRANCES
- CASCADE ALUMINUM
  - NARROW STILE
  - HARDWARE PER SCHEDULE

## GENERAL NOTES

- WEST COAST CAD AND THE NAMED GLAZING CONTRACTOR WILL ASSUME NO RESPONSIBILITY FOR ERRORS RESULTING FROM THE USE OF THESE DRAWINGS BY OTHER TRADES.
- FINAL APPROVAL BY THE GENERAL CONTRACTOR CONSTITUTES ACCEPTANCE OF ALL DEVIATIONS TO THE CONTRACT DOCUMENTS MADE IN THESE DRAWINGS, AND WHEN APPROVED THESE DRAWINGS SHALL BE DEEMED ACCURATE AND WILL CONSTITUTE AN AUTHORIZATION TO PROCEED.
- THESE DRAWINGS REPRESENT AN INTERPRETATION OF THE APPLICATION OF PRODUCTS TO THIS PROJECT. IT IS IMPORTANT THAT THIS INTERPRETATION BE REVIEWED DIMENSIONALLY AND FUNCTIONALLY WITH RESPECT TO THE ARCHITECT'S INTENT.
- ALL DIMENSIONS TO BE FIELD VERIFIED.
- ROUGH OPENING PROVIDED MUST BE SQUARE, PLUMB, AND LEVEL WITHIN INDUSTRY STANDARDS.
- DETAILS SHOWN WITH WORK FROM OTHER TRADES IS FOR REFERENCE ONLY.
- ALL FRAME ELEVATIONS ARE TO BE VIEWED FROM THE EXTERIOR UNLESS OTHERWISE NOTED.
- PROJECT MATERIALS MUST BE PROTECTED FROM DAMAGE BY OTHER TRADES BY THE GENERAL CONTRACTOR.
- ALL FASTENERS SHOWN ARE REFERENCE ONLY. ACTUAL FASTENER TYPES AND SIZES SHOULD BE BASED ON ACTUAL CONDITIONS AND VERIFIED BY A LICENSED STRUCTURAL ENGINEER (IF REQUIRED).
- ALL PART NUMBERS ON THESE DRAWINGS SHOULD BE VERIFIED PRIOR TO ORDERING MATERIALS.
- ALL DIMENSIONS ON THESE DRAWINGS SHOULD BE VERIFIED PRIOR TO ORDERING FABRICATION/INSTALLING MATERIALS.
- ALL STEEL CLIPS AND INTERNAL STEEL REINFORCING ARE FOR REFERENCE ONLY. ACTUAL STEEL SIZES AND THICKNESS SHOULD BE DETERMINED BY OTHERS BASED ON THE ARCHITECT'S WIND LOAD/DEAD LOAD REQUIREMENTS OUTLINED IN THE SPECIFICATIONS.

APPROVED AS NOTED  
APPROVAL IS ONLY FOR GENERAL CONFORMANCE WITH THE DESIGN CONCEPT OF THE PROJECT AND THE INFORMATION IN THE CONTRACT DOCUMENTS. CONTRACTOR IS RESPONSIBLE FOR DIMENSIONS TO BE CONFIRMED AND CORRELATED AT THE JOB SITE. INFORMATION THAT PERTAINS SOLELY TO THE FABRICATION PROCESS OR TO THE MEANS AND METHODS OF CONSTRUCTION, COORDINATION OF THE WORK OF ALL TRADES, AND REPAIRS, ALL MADE AT A SITE AND SATISFACTORY MAKER. THIS APPROVAL DOES NOT MODIFY THE CONTRACTOR'S DUTY TO COMPLY WITH THE CONTRACT DOCUMENTS.  
BY: D. GROOMS DATE: 03.26.2018  
vega architecture llc | denver, co

Drawings Received: 3/26/18  
Reviewed for general conformance and compliance with design concept drawings, and specifications. Any action noted does not waive any requirements of contract documents. Verification of details dimensions: coordination of trades; and satisfactory performance of his work are contractors complete responsibility.  
No Exception Taken  
Make Correction Noted  
Revise and Resubmit  
Reviewed By: Edunham  
Date: 03/26/2018  
PEAK ENGINEERING, INC.

RECEIVED  
FOR  
RECORD  
ONLY

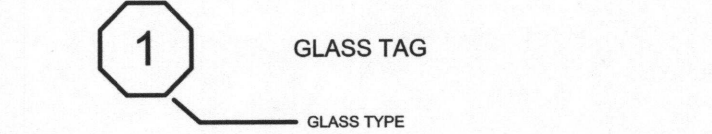
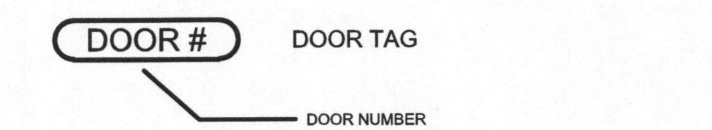
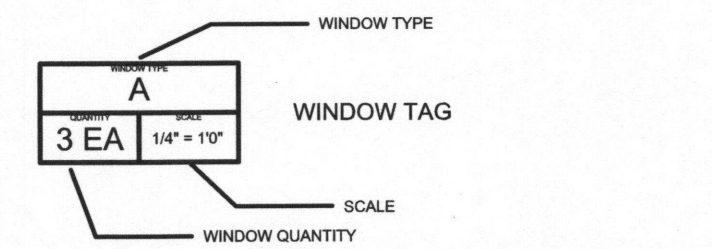
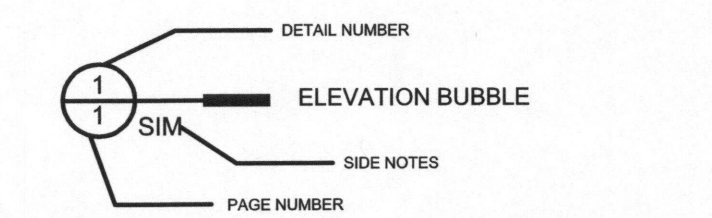
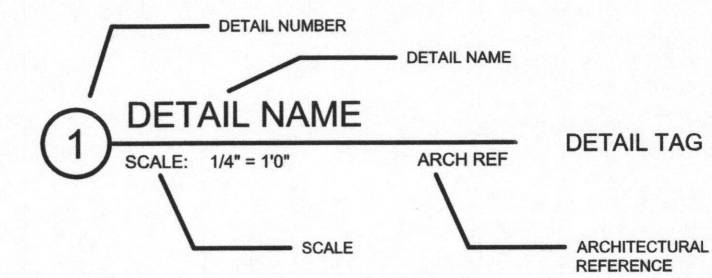
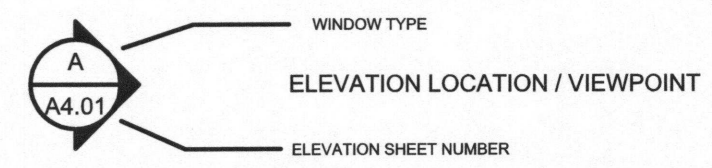
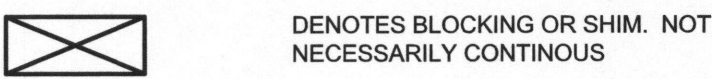
DATE:  
FEBRUARY 23, 2018 ENG

1

FIELD VERIFY ALL DIMENSIONS

STORQUEST PORTLAND  
LEASING OFFICE

SYMBOL LEGEND



ABBREVIATIONS

A/C - ACCESS CONTROLLED  
AFF - ABOVE FINISH FLOOR  
BOH - BOTTOM OF HORIZONTAL  
COH - CENTER LINE OF HORIZONTAL  
DIM - DIMENSION  
DLO - DAYLIGHT OPENING  
DO - DOOR OPENING  
ELEV - ELEVATION  
FF - FINISH FLOOR  
GC - GENERAL CONTRACTOR  
MO - MASONRY OPENING  
NFD - NET FRAME DIMENSION  
NTS - NOT TO SCALE  
RO - ROUGH OPENING  
SIM - SIMILAR  
TOH - TOP OF HORIZONTAL  
UNO - UNLESS NOTED OTHERWISE

STORQUEST PORTLAND  
LEASING OFFICE  
4322 BEAVERTON HILLSDALE HWY  
PORTLAND, OR 97221



RENEWS: 6-30-2018

WEST COAST CAD SERVICE

QUALITY SHOP DRAWINGS  
AT AFFORDABLE PRICES  
chad@westcoastcad.com  
503-706-1353

GLAZING CONTRACTOR

ALL STAR GLASS  
3649 KASHMIR WAY SE  
SALEM, OR 97302

HARDWARE SCHEDULE

- HARDWARE GROUP 1
- CASCADE ALUMINUM SURFACE MOUNT CLOSERS
  - CASCADE ALUMINUM TOP AND BOTTOM OFFSET PIVOTS
  - CASCADE ALUMINUM ADA COMPLIANT PUSH/PULLS
  - ADAMS RITE MS1850 THREE POINT LOCK
  - KEYED CYLINDER INTERIOR/EXTERIOR (CONSTRUCTION CYLINDERS)
  - CASCADE ALUMINUM ADA COMPLIANT THRESHOLD
  - CASCADE ALUMINUM STANDARD WEATHER-STRIPPING
  - DOOR TO REMAIN UNLOCKED WHEN BUILDING OCCUPIED STICKER

DOOR SCHEDULE

DOOR #	SIZE	STILE	SWING	HDWR GRP	GLASS TYP
106A	6'0" X 7'0"	NARROW	OUT	1	GL2

DRAWING INDEX

PAGE #	TITLE
1	COVER SHEET
2	FLOOR PLAN
3	ELEVATIONS
4	ELEVATIONS
5	ELEVATIONS
6	DETAILS
7	DETAILS
8	DETAILS

FINISH SCHEDULE

- CLEAR ANODIZED
- BRONZE ANODIZED
- BLACK ANODIZED
- PAINTED/OTHER FINISH

DESCRIPTION:  
\_\_\_\_\_  
\_\_\_\_\_  
\_\_\_\_\_  
\_\_\_\_\_

GLASS SCHEDULE

GL1	1/4" SOLARBAN 60, ANNEALED 1/2" AIR 1/4" CLEAR, ANNEALED
GL2	1/4" SOLARBAN 60, TEMPERED 1/2" AIR 1/4" CLEAR, TEMPERED

PRODUCTS USED

- STOREFRONTS:
- CASCADE ALUMINUM
  - 450-TCS CENTER GLAZED
  - THERMALLY BROKEN
- ENTRANCES
- CASCADE ALUMINUM
  - NARROW STILE
  - HARDWARE PER SCHEDULE

GENERAL NOTES

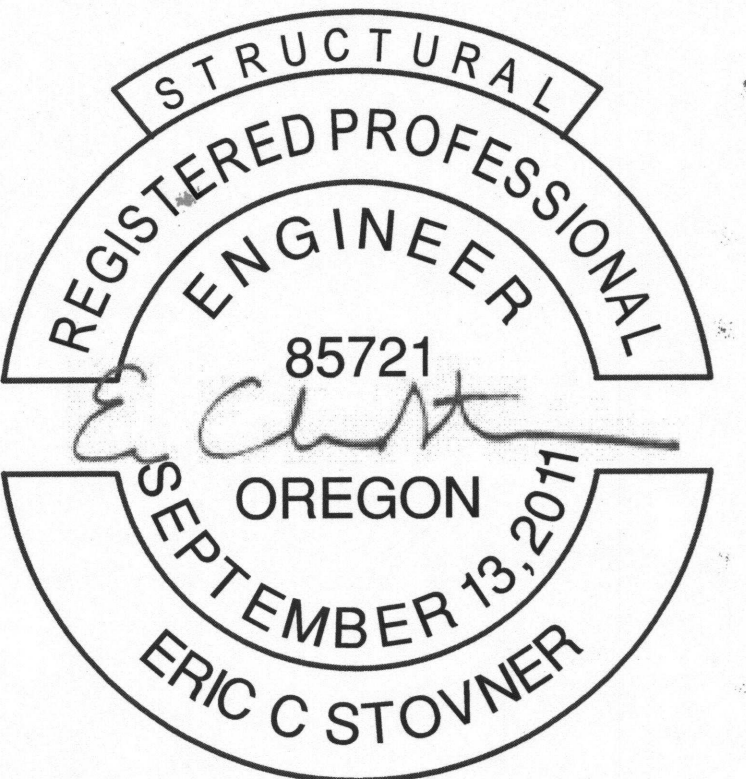
- WEST COAST CAD AND THE NAMED GLAZING CONTRACTOR WILL ASSUME NO RESPONSIBILITY FOR ERRORS RESULTING FROM THE USE OF THESE DRAWINGS BY OTHER TRADES.
- FINAL APPROVAL BY THE GENERAL CONTRACTOR CONSTITUTES ACCEPTANCE OF ALL DEVIATIONS TO THE CONTRACT DOCUMENTS MADE IN THESE DRAWINGS, AND WHEN APPROVED THESE DRAWINGS SHALL BE DEEMED ACCURATE AND WILL CONSTITUTE AN AUTHORIZATION TO PROCEED.
- THESE DRAWINGS REPRESENT AN INTERPRETATION OF THE APPLICATION OF PRODUCTS TO THIS PROJECT. IT IS IMPORTANT THAT THIS INTERPRETATION BE REVIEWED DIMENSIONALLY AND FUNCTIONALLY WITH RESPECT TO THE ARCHITECT'S INTENT.
- ALL DIMENSIONS TO BE FIELD VERIFIED.
- ROUGH OPENING PROVIDED MUST BE SQUARE, PLUMB, AND LEVEL WITHIN INDUSTRY STANDARDS.
- DETAILS SHOWN WITH WORK FROM OTHER TRADES IS FOR REFERENCE ONLY.
- ALL FRAME ELEVATIONS ARE TO BE VIEWED FROM THE EXTERIOR UNLESS OTHERWISE NOTED.
- PROJECT MATERIALS MUST BE PROTECTED FROM DAMAGE BY OTHER TRADES BY THE GENERAL CONTRACTOR.
- ALL FASTENERS SHOWN ARE REFERENCE ONLY. ACTUAL FASTENER TYPES AND SIZES SHOULD BE BASED ON ACTUAL CONDITIONS AND VERIFIED BY A LICENSED STRUCTURAL ENGINEER (IF REQUIRED).
- ALL PART NUMBERS ON THESE DRAWINGS SHOULD BE VERIFIED PRIOR TO ORDERING MATERIALS.
- ALL DIMENSIONS ON THESE DRAWINGS SHOULD BE VERIFIED PRIOR TO ORDERING/FABRICATING/INSTALLING MATERIALS.
- ALL STEEL CLIPS AND INTERNAL STEEL REINFORCING ARE FOR REFERENCE ONLY. ACTUAL STEEL SIZES AND THICKNESS SHOULD BE DETERMINED BY OTHERS BASED ON THE ARCHITECT'S WIND LOAD/DEAD LOAD REQUIREMENTS OUTLINED IN THE SPECIFICATIONS.

FIELD VERIFY ALL DIMENSIONS

DATE:  
FEBRUARY 23, 2018 ENG

1

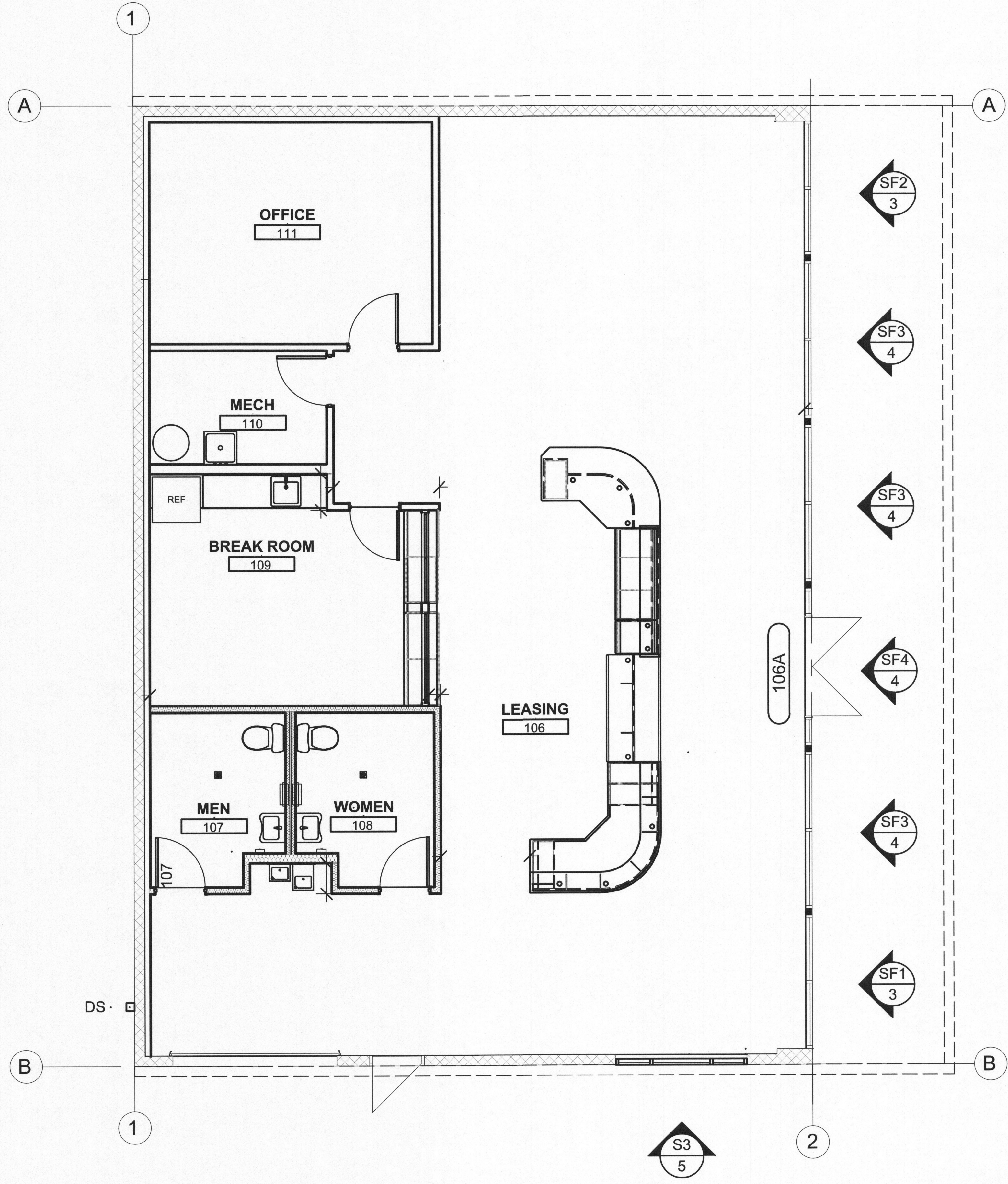
STORQUEST PORTLAND  
LEASING OFFICE



RENEWS: 6-30-2018

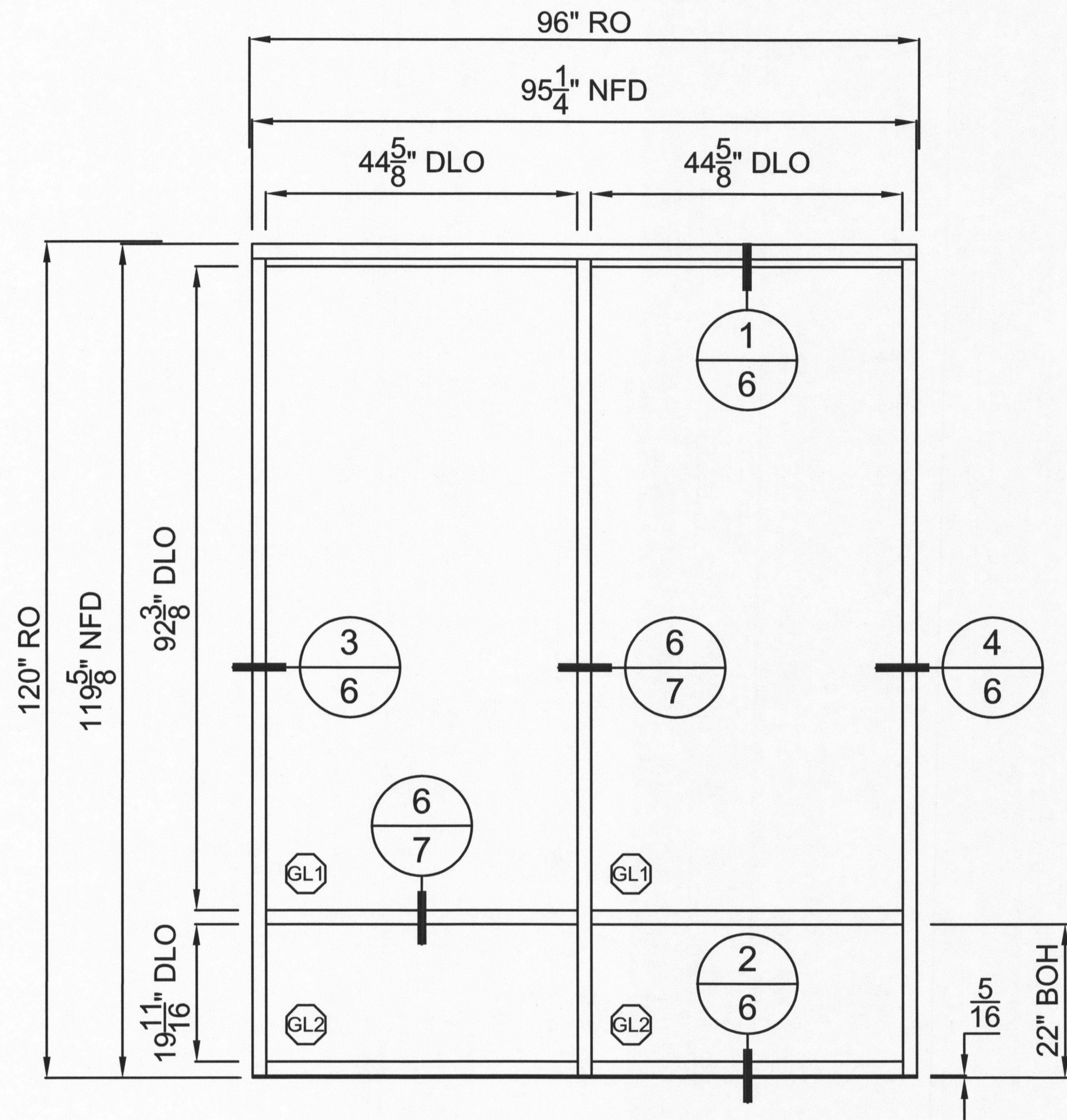
DATE:  
FEBRUARY 23, 2018 ENG

2

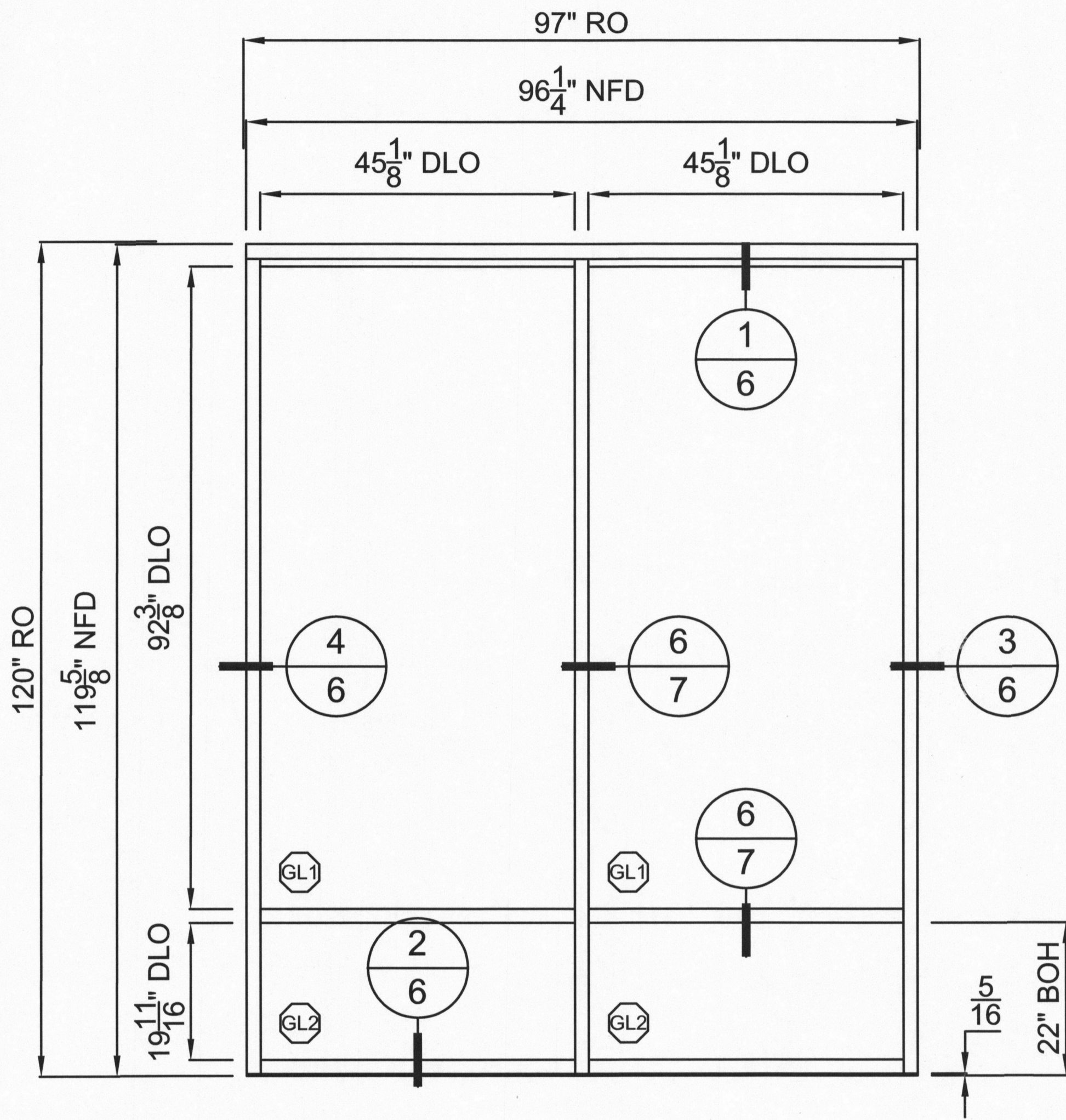


1 FLOOR PLAN  
SCALE: NOT TO SCALE

STORQUEST PORTLAND  
LEASING OFFICE



WINDOW TYPE	
SF1	
QUANTITY	SCALE
1	3/8" = 1'0"



WINDOW TYPE	
SF2	
QUANTITY	SCALE
1	3/8" = 1'0"

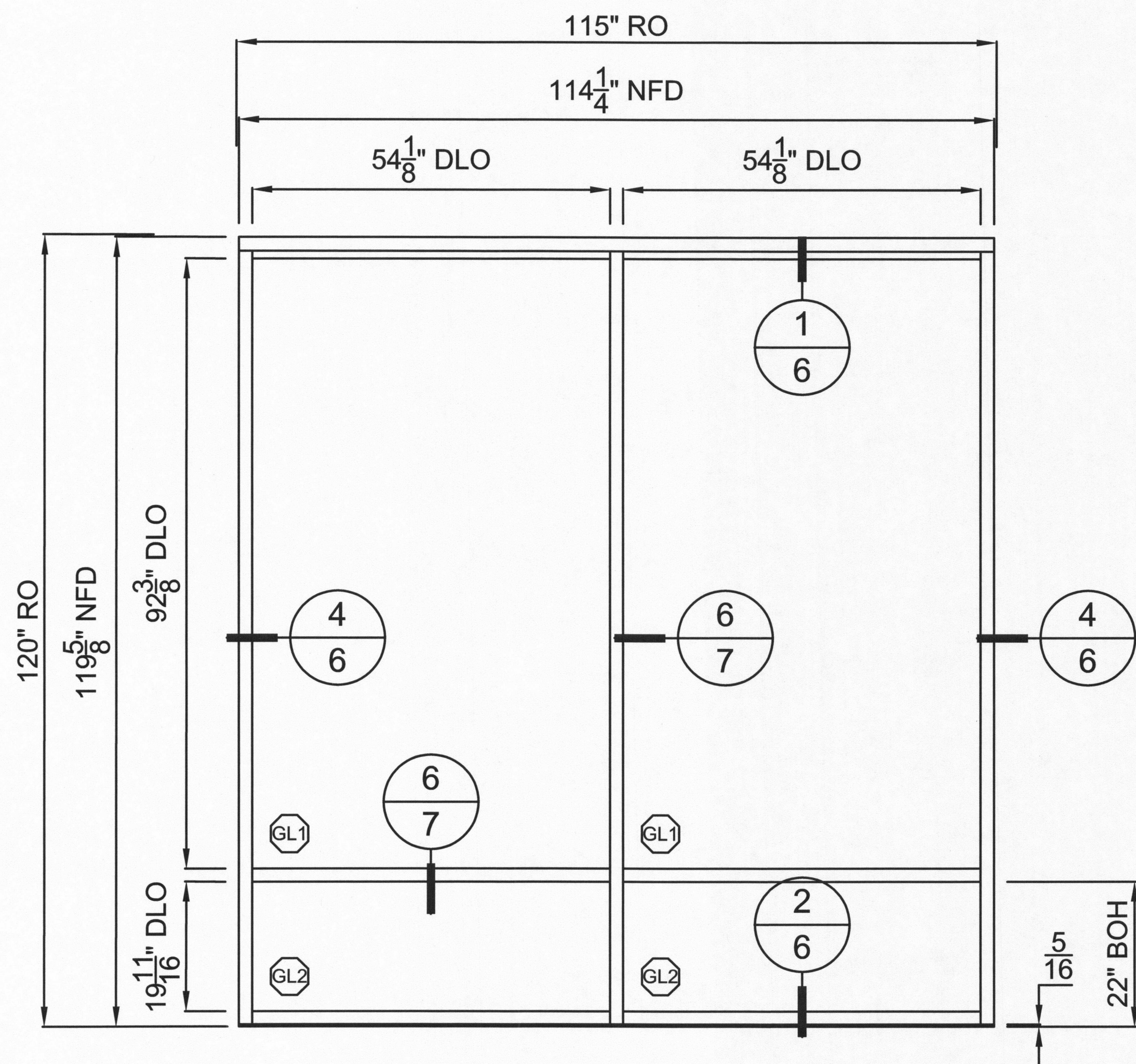


RENEWS: 6-30-2018

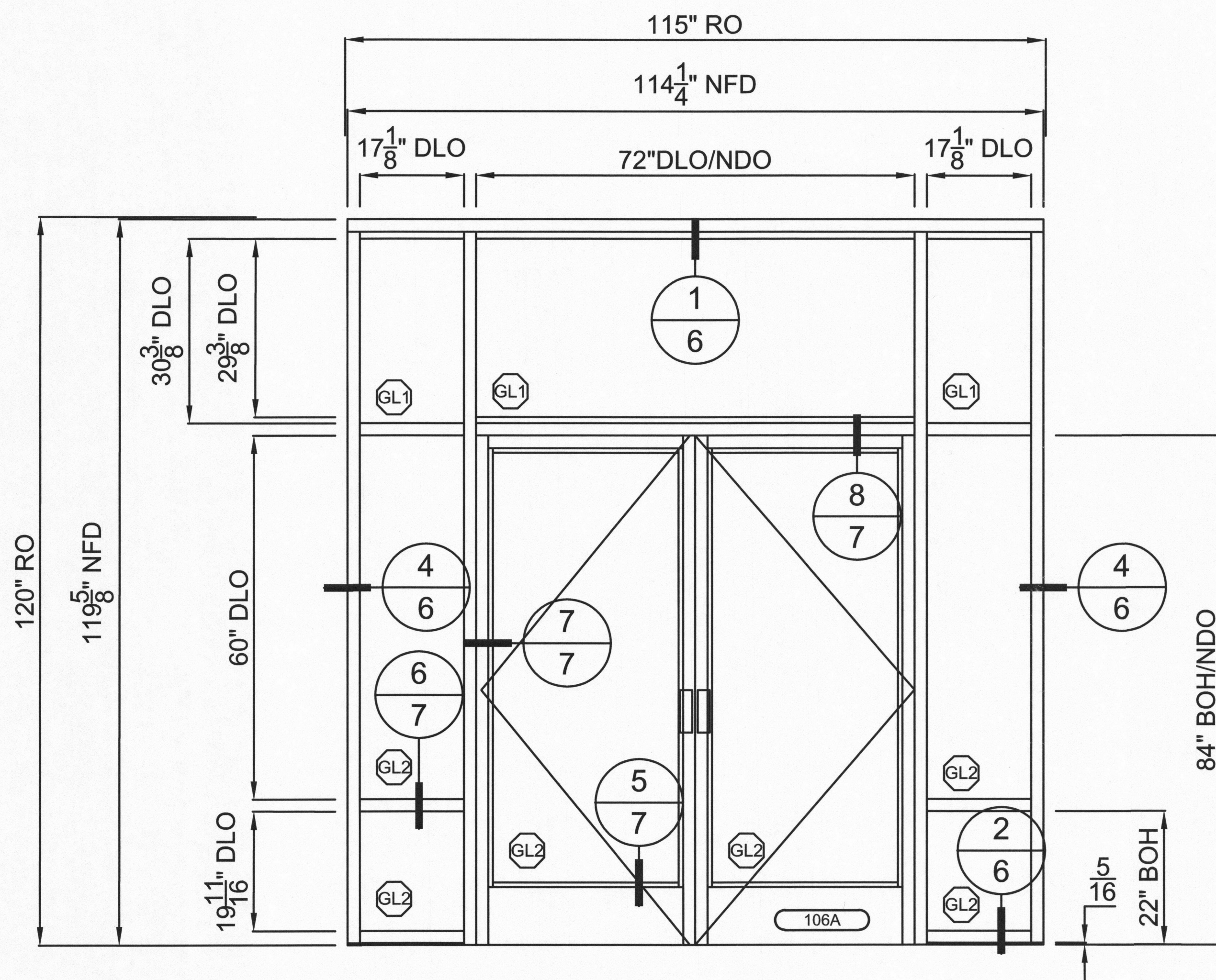
City of Portland  
Bureau of  
Development Services  
By *K Moore* Date *3/27/18*  
Approved by  
Planning and Zoning Review

DATE:  
FEBRUARY 23, 2018 ENG

**STORQUEST PORTLAND  
LEASING OFFICE**



WINDOW TYPE	
SF3	
QUANTITY	SCALE
3	3/8" = 1'0"



WINDOW TYPE	
SF4	
QUANTITY	SCALE
1	3/8" = 1'0"

City of Portland  
Bureau of  
Development Services  
By *[Signature]* Date 3/7/18  
Approved by  
Planning and Zoning Review

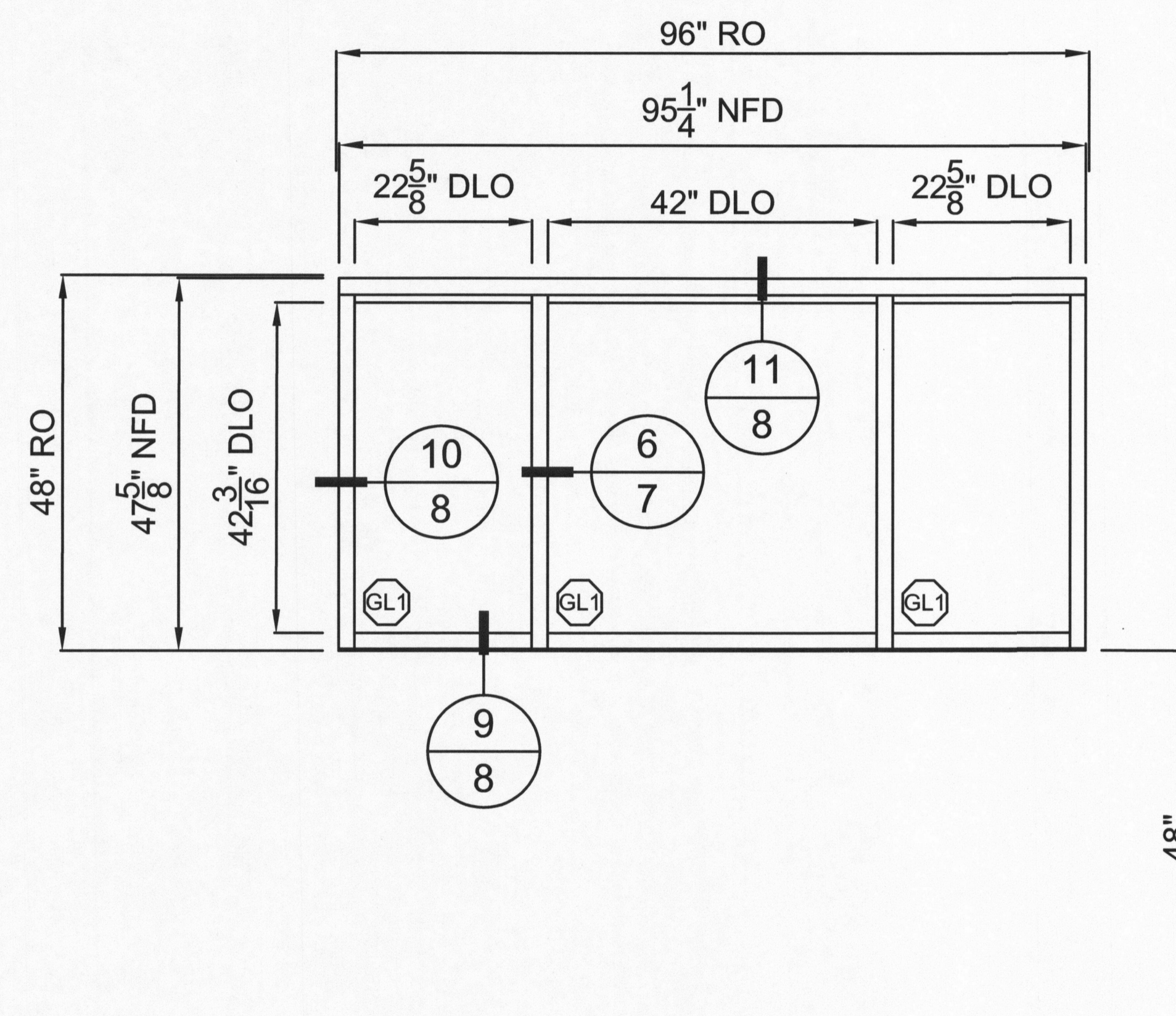


RENEWS: 6-30-2018

DATE:  
FEBRUARY 23, 2018 ENG

**4**

# STORQUEST PORTLAND LEASING OFFICE



WINDOW TYPE	
S3	
QUANTITY	SCALE
1	3/8" = 1'0"



RENEWS: 6-30-2018

City of Portland  
Bureau of  
Development Services

By: A. Moore Date: 3/29/18

Approved by  
Planning and Zoning Review

DATE: FEBRUARY 23, 2018 ENG

5

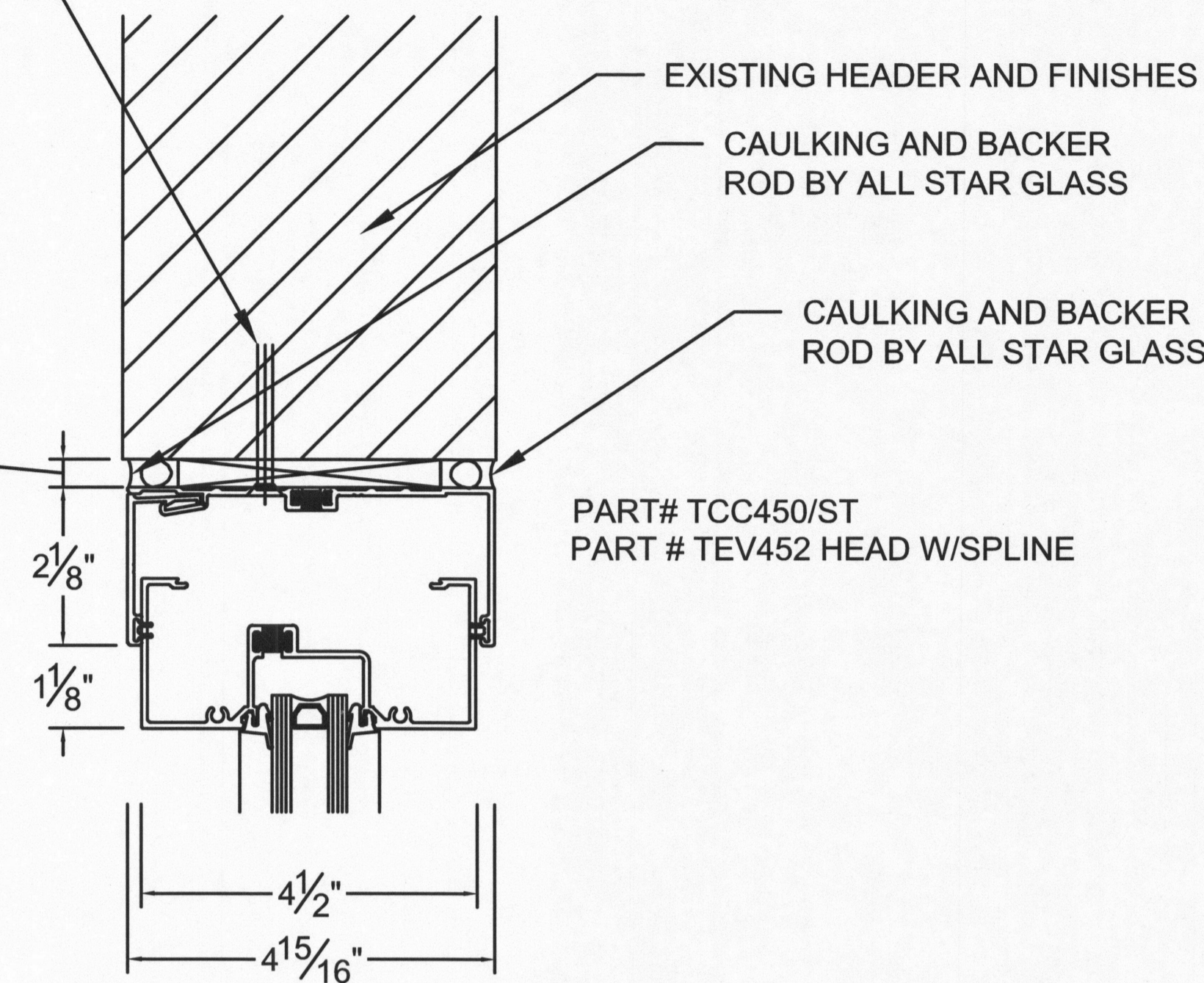
(1) 1/4" DIA. SIMPSON TITEN HD SCREW ANCHOR W/ 1-5/8" EMBEDMENT, 1-3/4" MIN. EDGE DISTANCE, 6" MIN. SPACING INTO 4" MIN. THICK CONCRETE EACH SIDE OF VERTICAL MULLION (ICC-ES ESR-2713)

(1) ITW BUILDEX 12-24 TEKS/5 SCREW W/ 1/2" MIN. EDGE DISTANCE AND 6" MIN. SPACING INTO 3/8" MAX THICK STRUCTURAL STEEL EACH SIDE OF VERTICAL MULLION (ICC-ES ESR-1976)

(1) ITW BUILDEX 12-14 TEKS/3 SCREW W/ 1" MIN. EDGE DISTANCE AND 6" MIN. SPACING INTO 20GA. MIN. THICK COLD-FORMED STEEL EACH SIDE OF VERTICAL MULLION (ICC-ES ESR-1976)

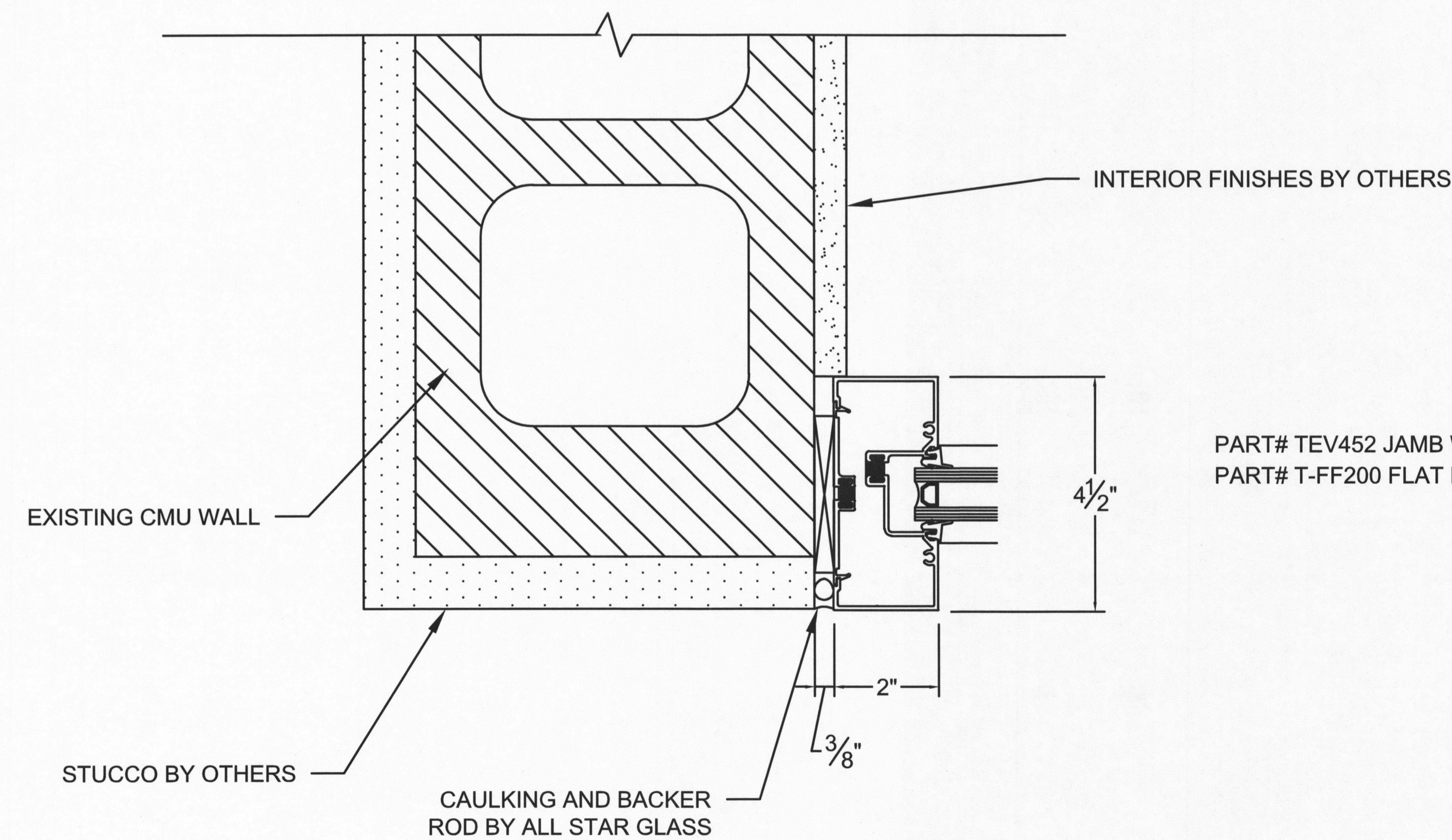
(2) 1/4" DIA. SIMPSON SDS SCREWS W/ 1-1/2" MIN. EDGE DISTANCE AND 3" MIN. SPACING INTO WOOD EACH SIDE OF VERTICAL MULLION (ICC-ES ESR-2236)

(1) 1/2" SIMPSON STRONG BOLT 2 ANCHOR W/ 3-1/2" EMBEDMENT, 4" MIN. SPACING, 1-3/4" MIN. EDGE DISTANCE AND 12" MIN. END DISTANCE INTO FULLY GROUTED CMU EACH SIDE OF VERTICAL MULLION (IAPMO ER-240)



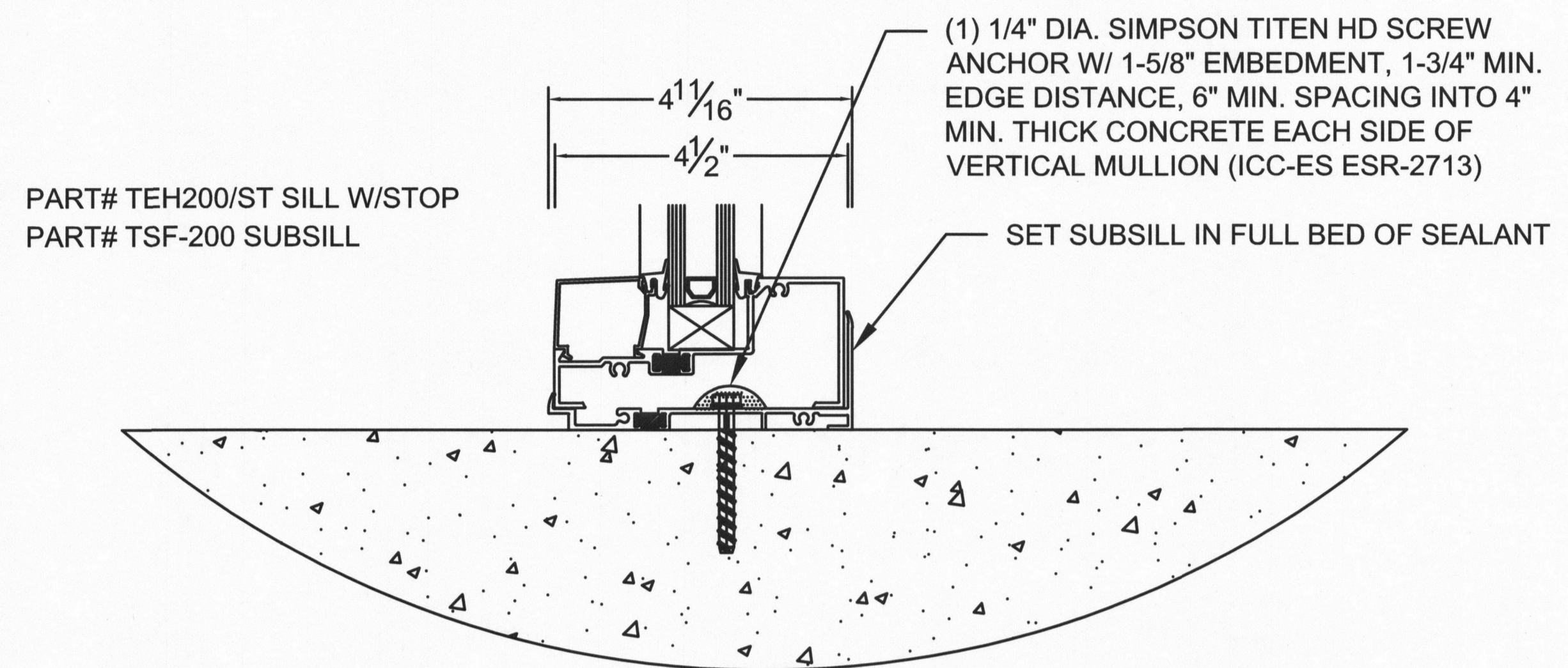
### 1 STOREFRONT HEAD

SCALE: 3" = 1'-0"



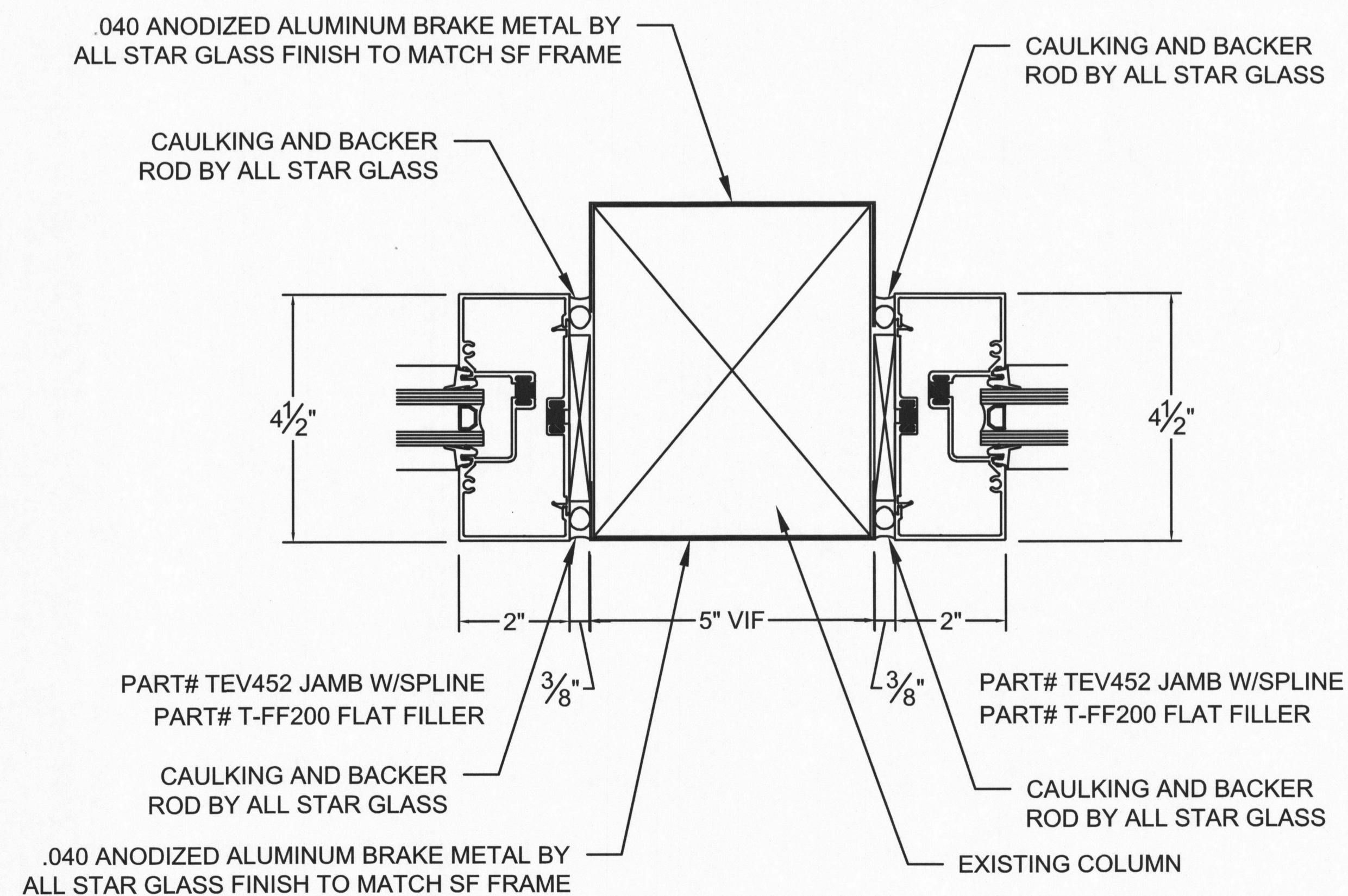
### 3 STOREFRONT JAMB @ CMU WALL

SCALE: 3" = 1'-0"



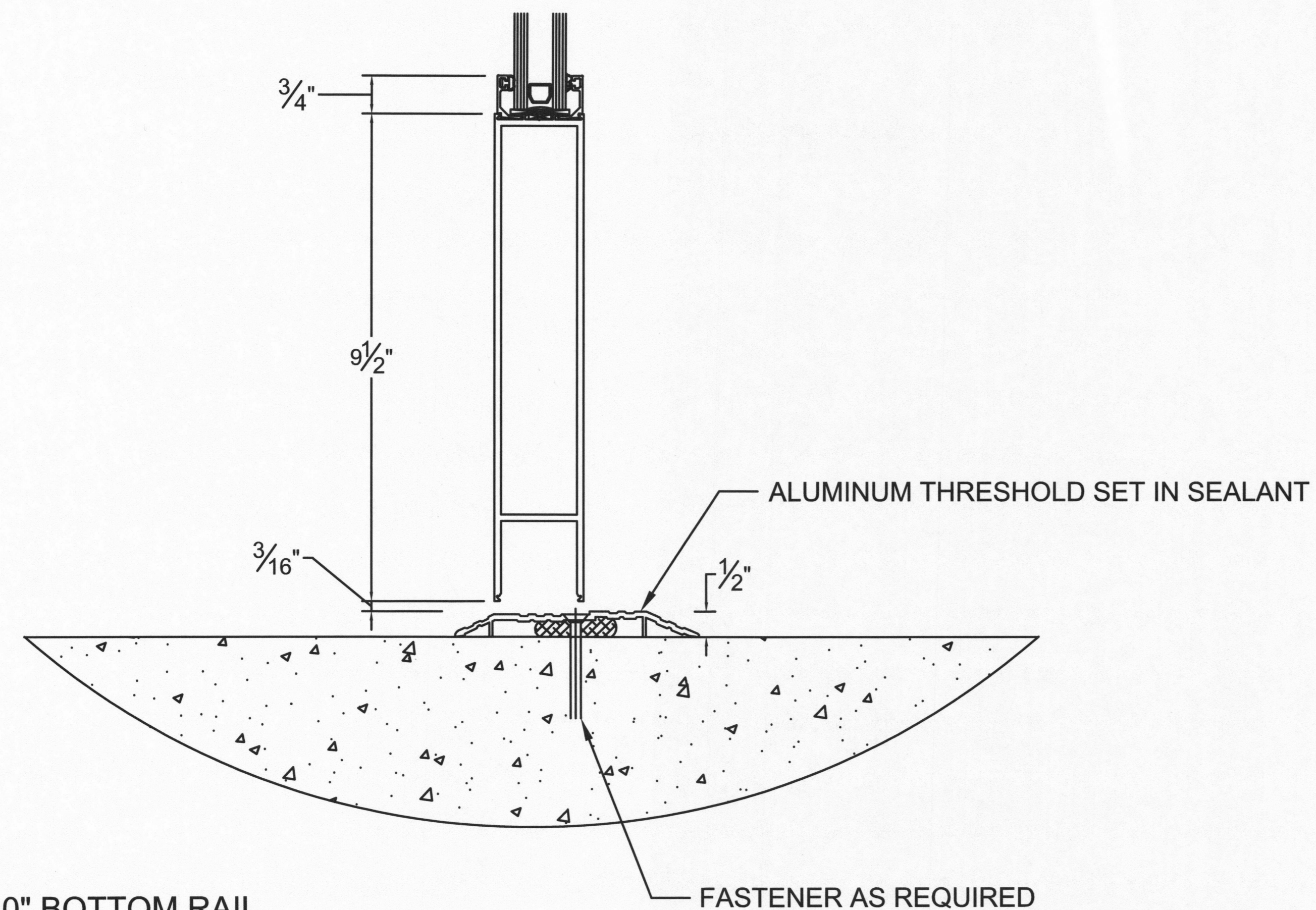
### 2 STOREFRONT SILL @ CONCRETE

SCALE: 3" = 1'-0"

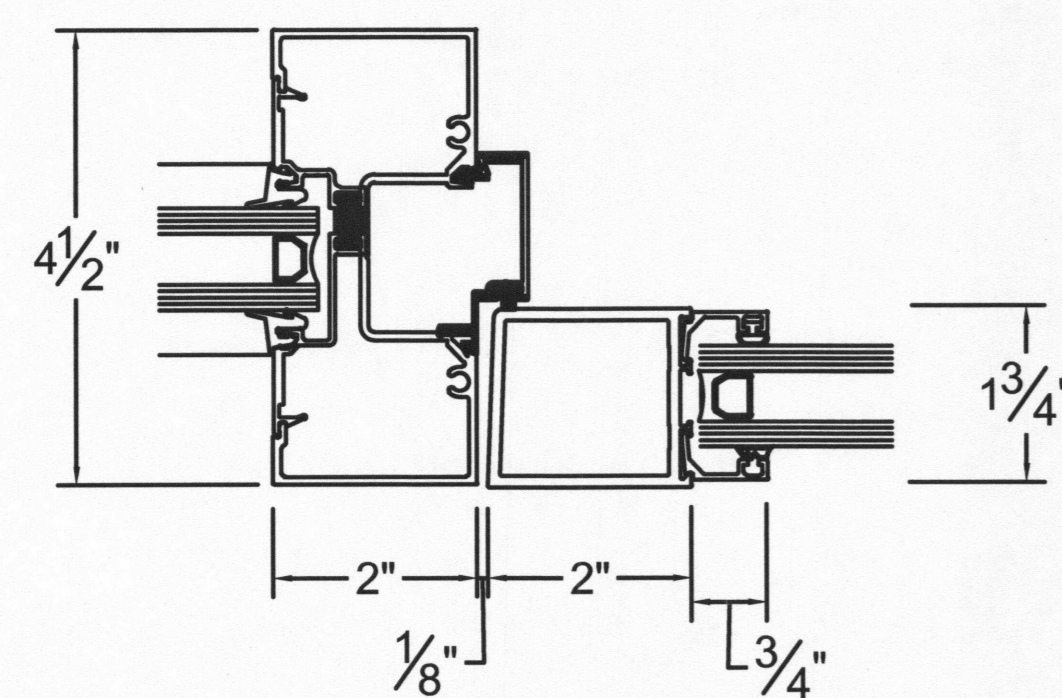


### 4 STOREFRONT JAMB @ EXISTING COLUMN

SCALE: 3" = 1'-0"

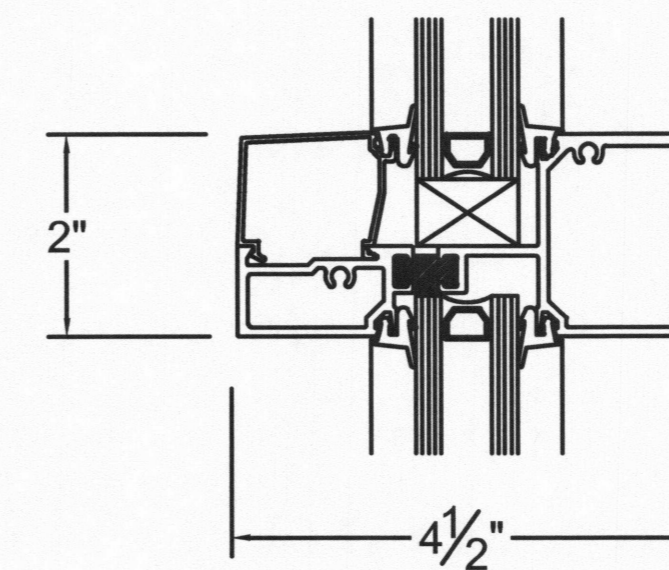


5 10" BOTTOM RAIL  
SCALE: 3" = 1'-0"



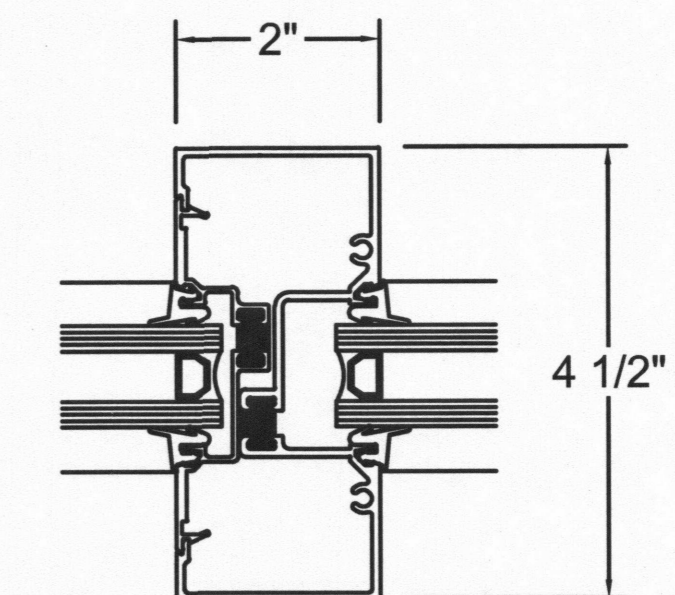
7 DOOR JAMB @ SIDELITE  
SCALE: 3" = 1'-0"

PART# TEH450/ST TUBULAR HORIZONTAL



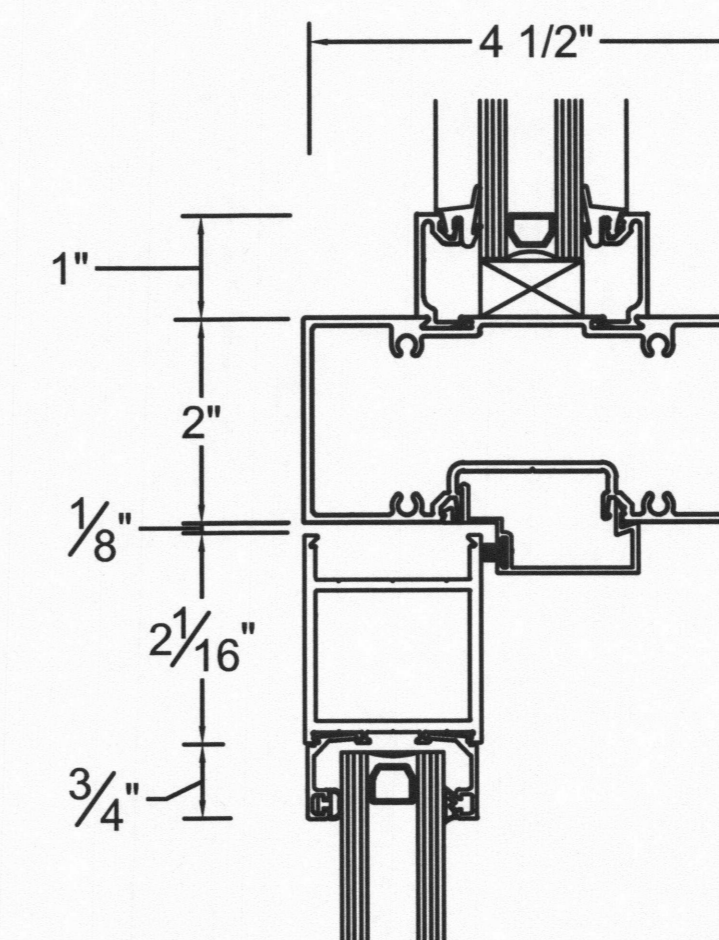
HORIZONTAL

PART# TEV452 VERT W/SPLINE  
PART# TEIF200 POCKET FILLER

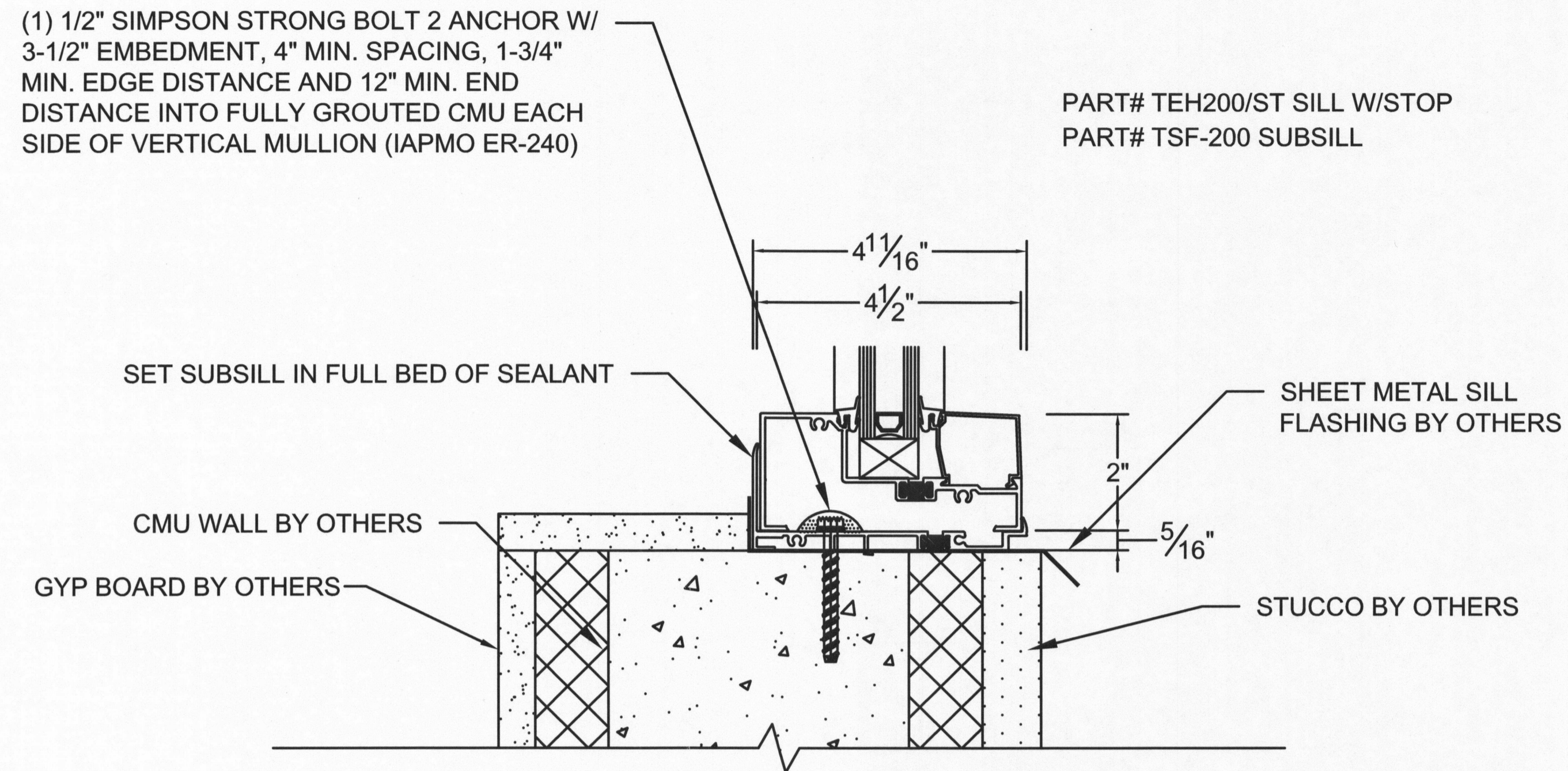


VERTICAL

6 INTERMEDIATE MULLIONS  
SCALE: 3" = 1'-0"



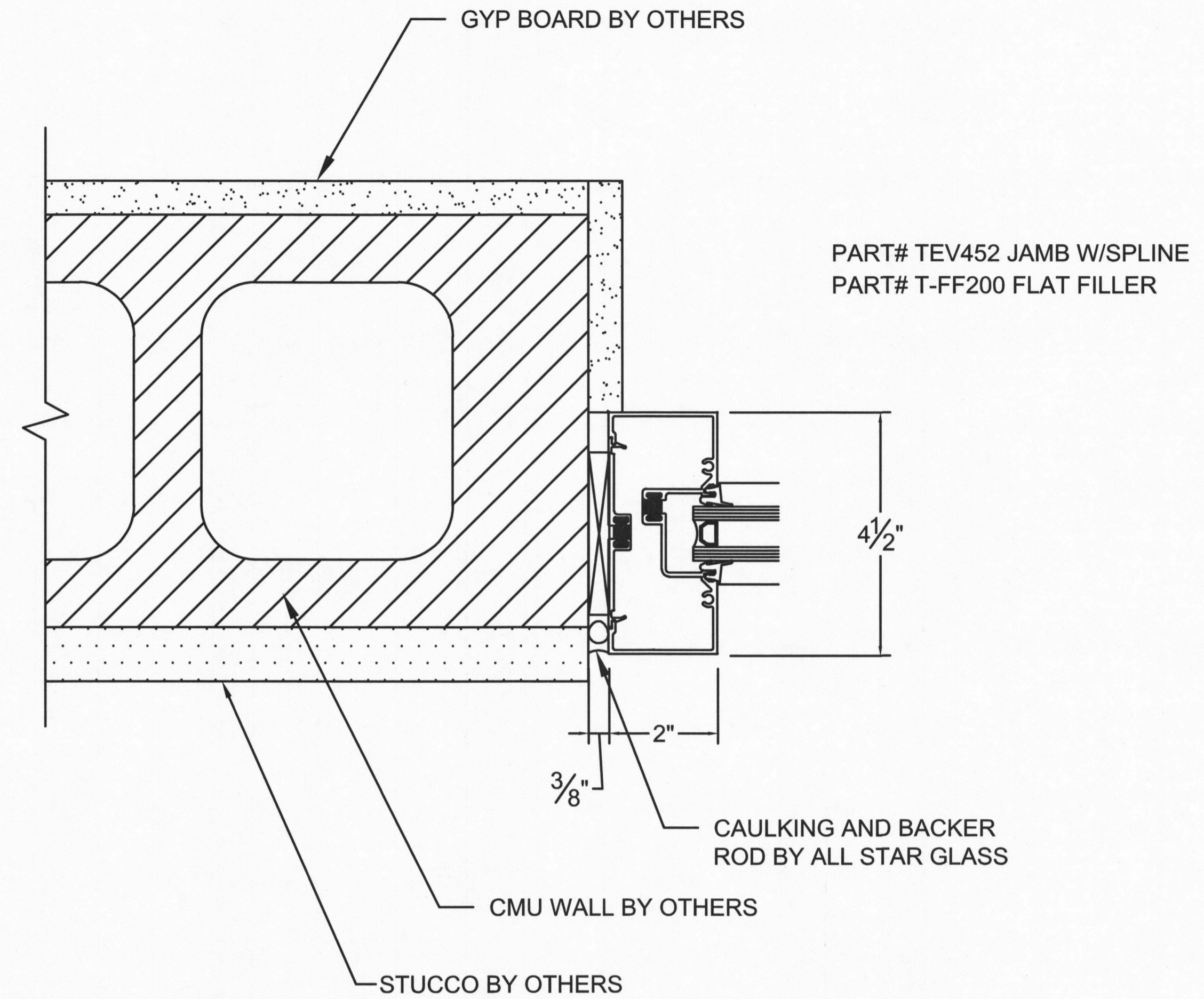
8 DOOR HEAD @ TRANSOM  
SCALE: 3" = 1'-0"



**9 STOREFRONT SILL @ CMU**

SCALE: 3" = 1'-0"

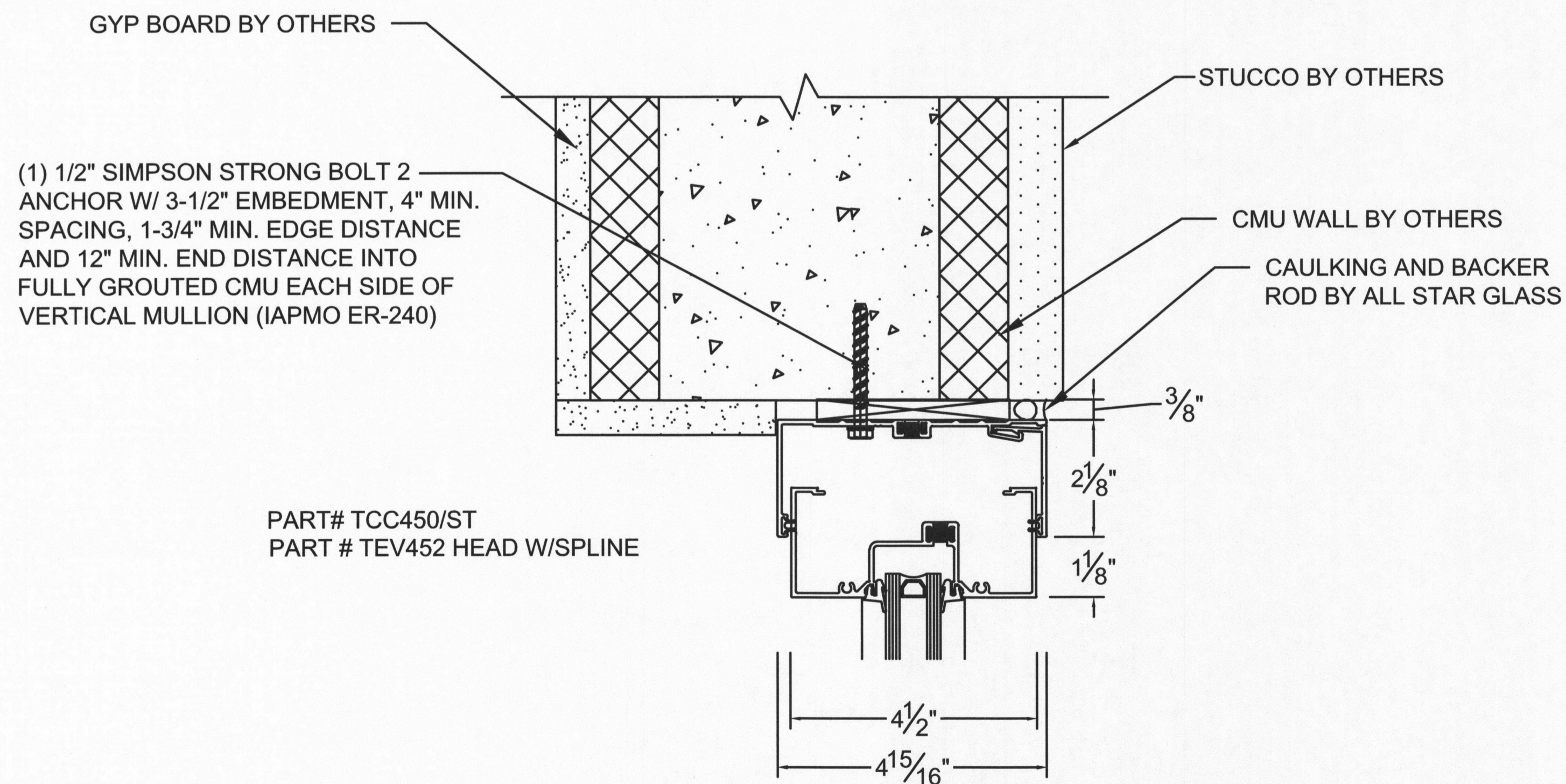
19/A7.2



**10 STOREFRONT JAMB @ CMU**

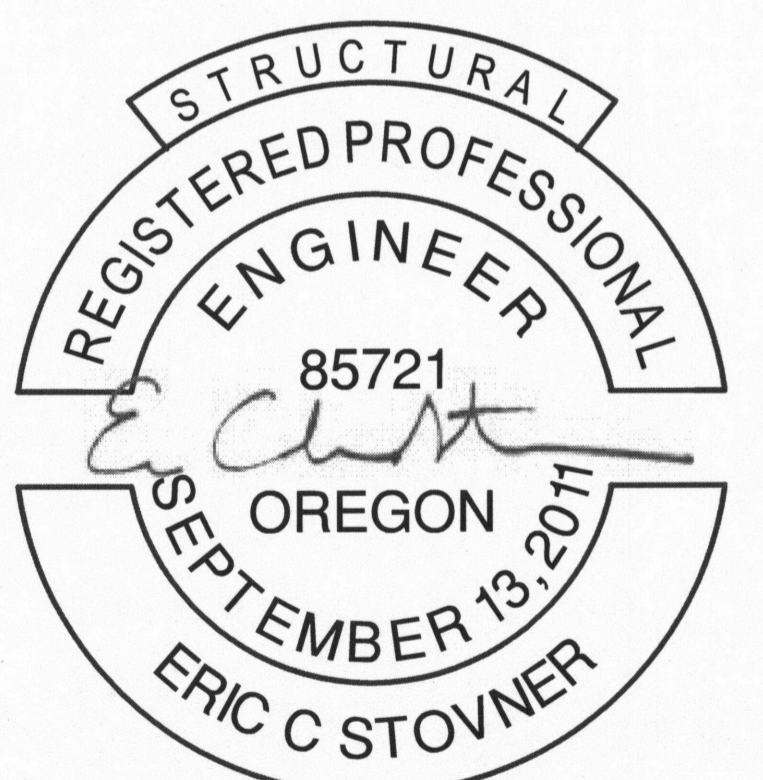
SCALE: 3" = 1'-0"

20/A7.4



**11 STOREFRONT HEAD @ CMU**

SCALE: 3" = 1'-0"



RENEWS: 6-30-2018

DATE:  
FEBRUARY 23, 2018 ENG