

Sullivan's Crossing

Bicycle & Pedestrian Bridge



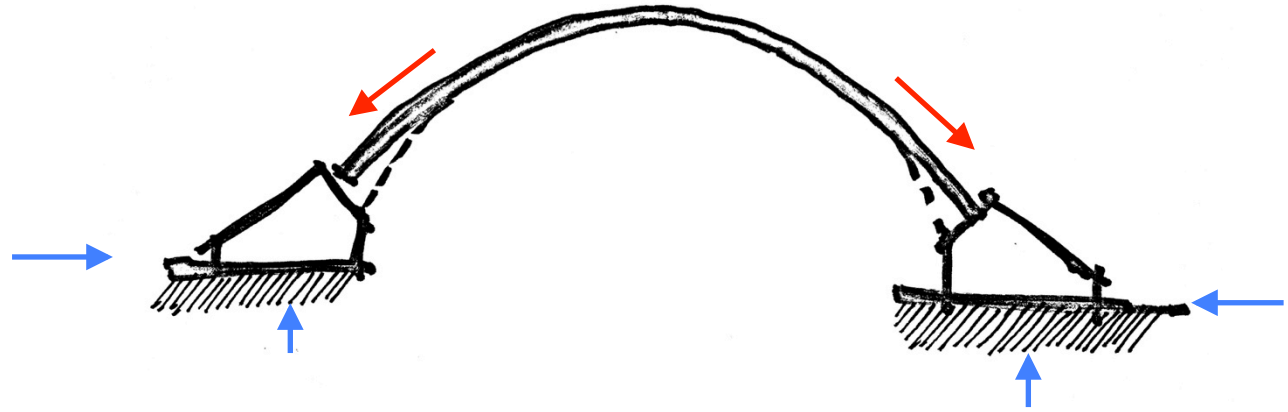
PBOT
PORTLAND BUREAU OF TRANSPORTATION
Commissioner: DAN SALTZMAN | Director: LEAH TREAT

June 7, 2018



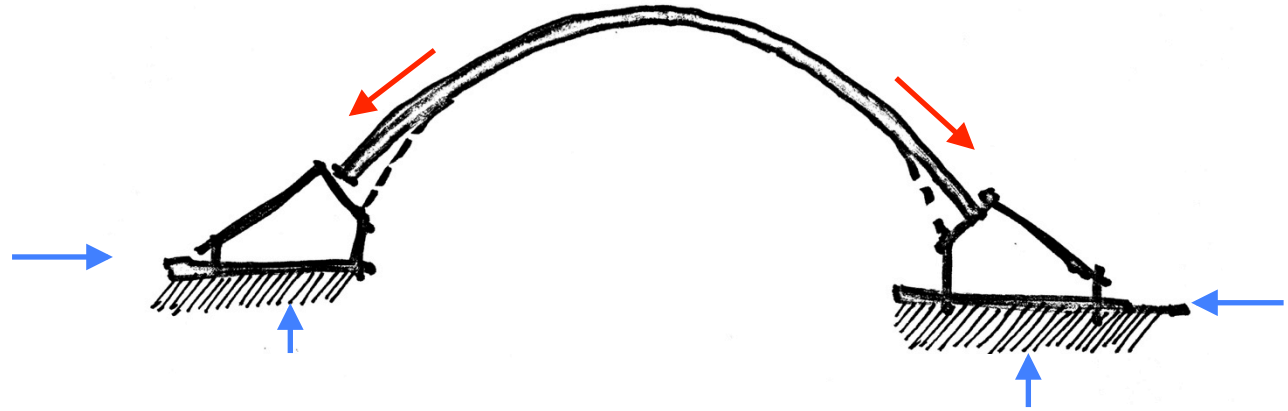
context

Arch

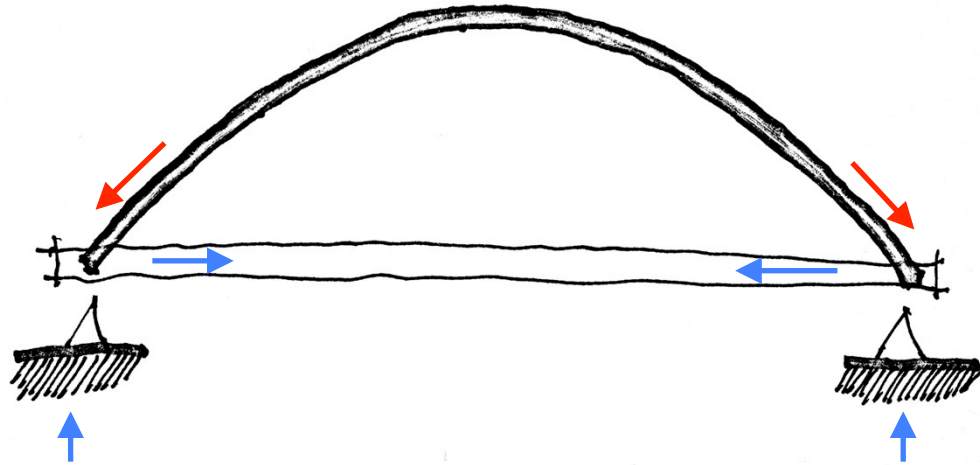


structural logic

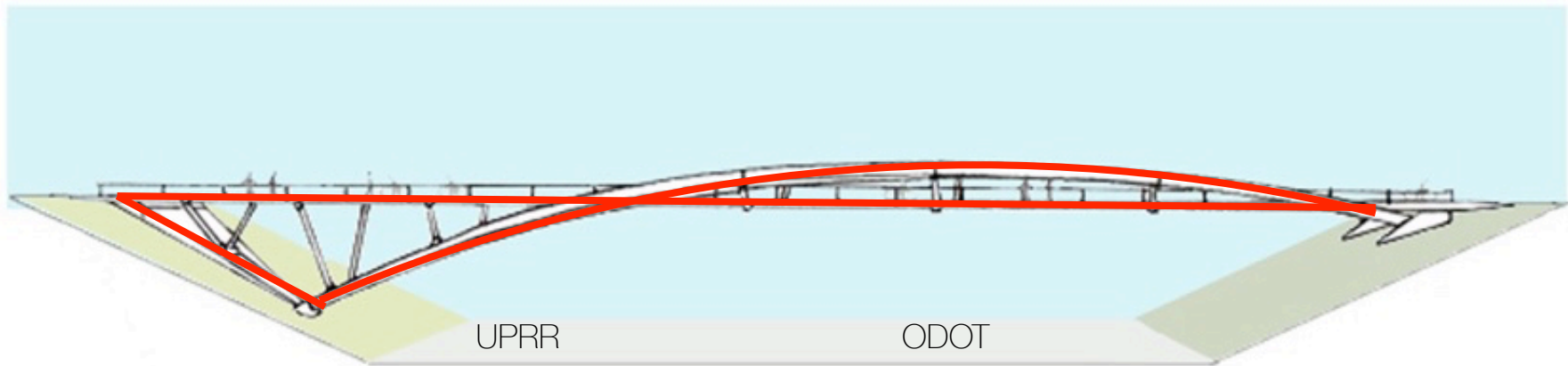
Arch



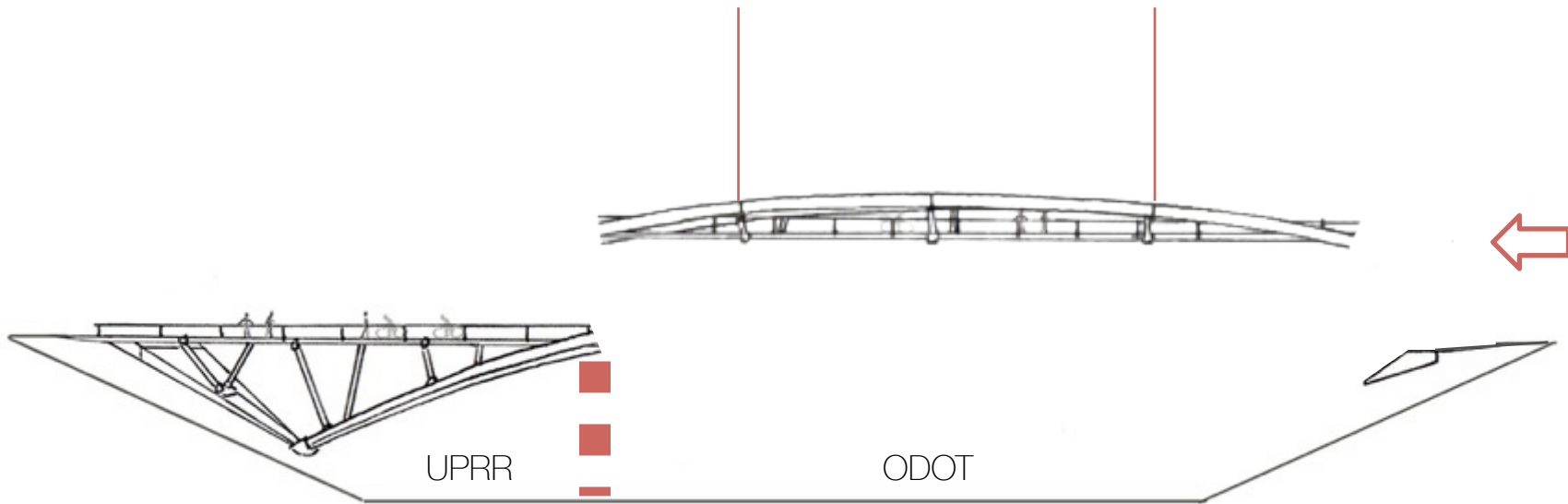
Tied Arch



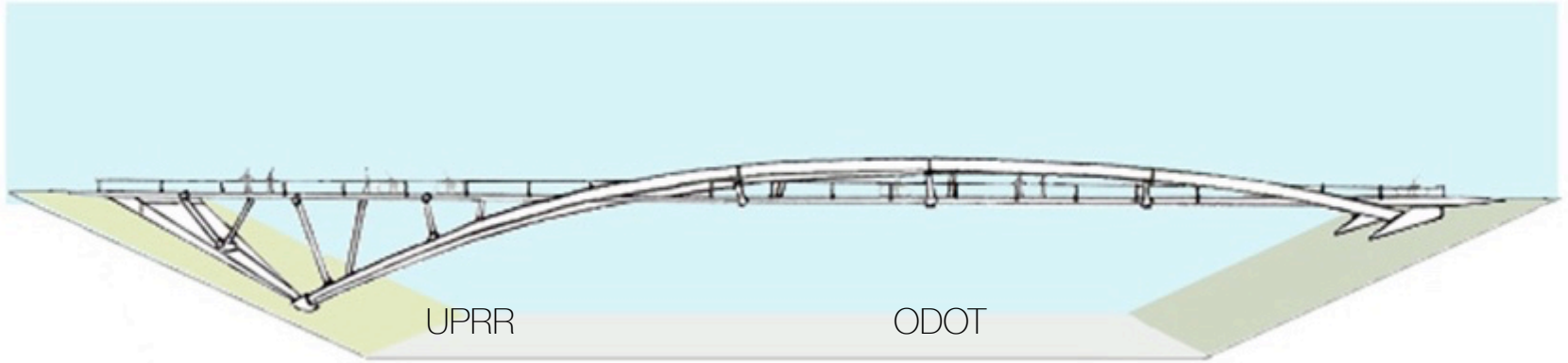
structural logic



structural logic

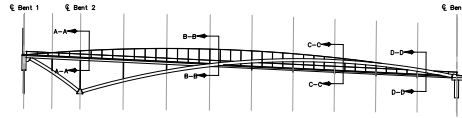


construction logic



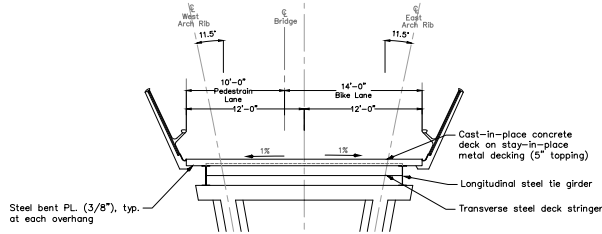
construction logic

Note:
Reference section A-A for typical deck information.

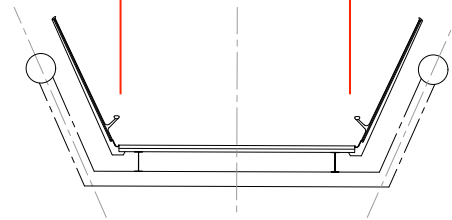


Bridge Profile
SCALE: 1" = 40'

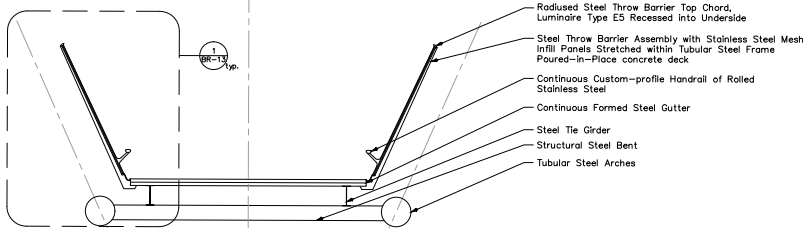
24'-0"
clear width



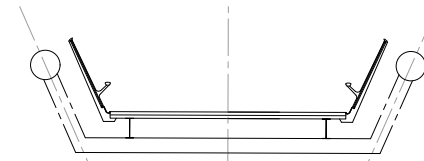
Deck Section A-A
SCALE: 1" = 5'



Deck Section C-C
SCALE: 1" = 5'



Deck Section B-B
SCALE: 1" = 5'



Deck Section D-D
SCALE: 1" = 5'

WARNING
IF THIS BAR DOES NOT MEASURE UP THEN DRAWING IS NOT TO SCALE.

NO.	DATE	DESCRIPTION	REVISION	APPD.

DESIGNED BY S. Whittington	DATE APPROVED
DRAWN BY J. Wilkes	DIV. ENGINEER
CHECKED BY	

PRELIMINARY
NO FOR
CONSTRUCTION

APPROVALS:	
POST PRINCIPAL ENGINEER	REG. PROF. ENGR. NO. 16330PE
CITY ENGINEER	REG. PROF. ENGR. NO. 61630PE

PBOT
PORTLAND BUREAU OF TRANSPORTATION
DAN BALTZMAN
STEVE TOWNSEN, P.E.
COMMISSIONER
CITY ENGINEER

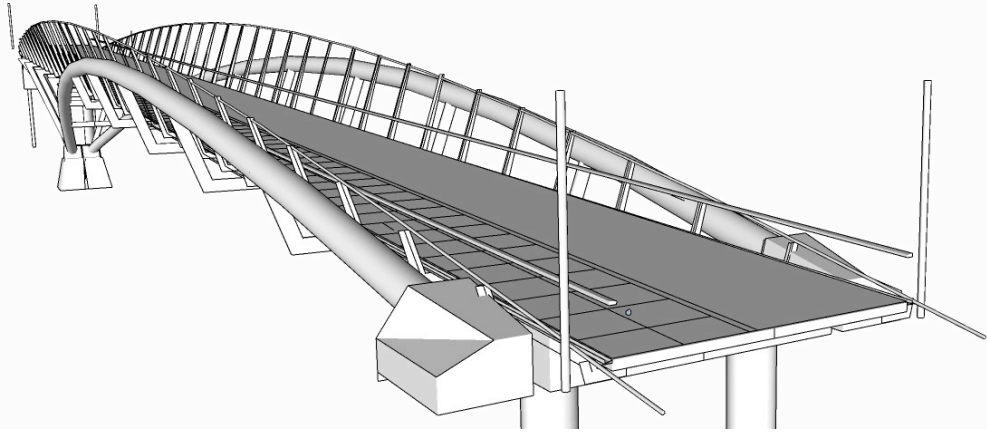


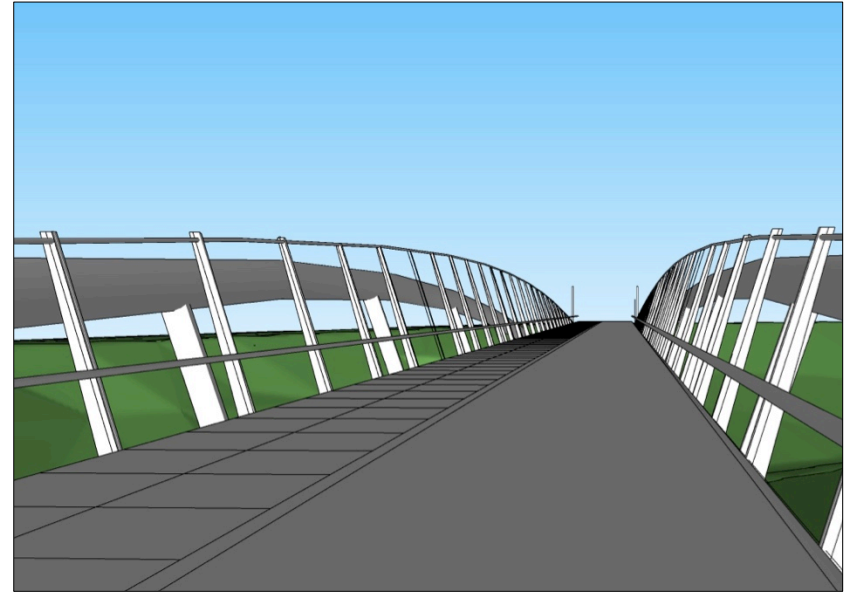
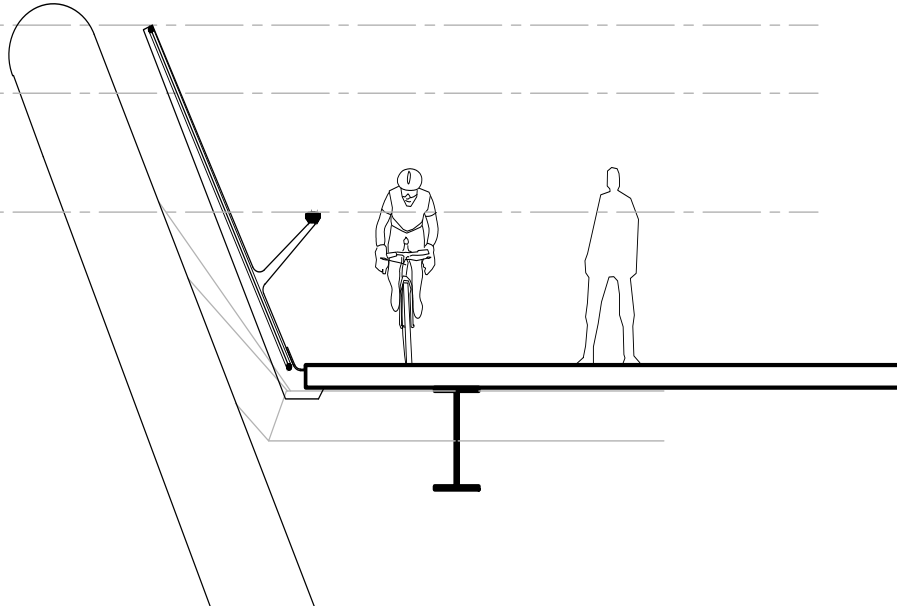
Sullivan's Crossing
Bicycle and Pedestrian Bridge

30% DESIGN SUBMITTAL
5/17/2018

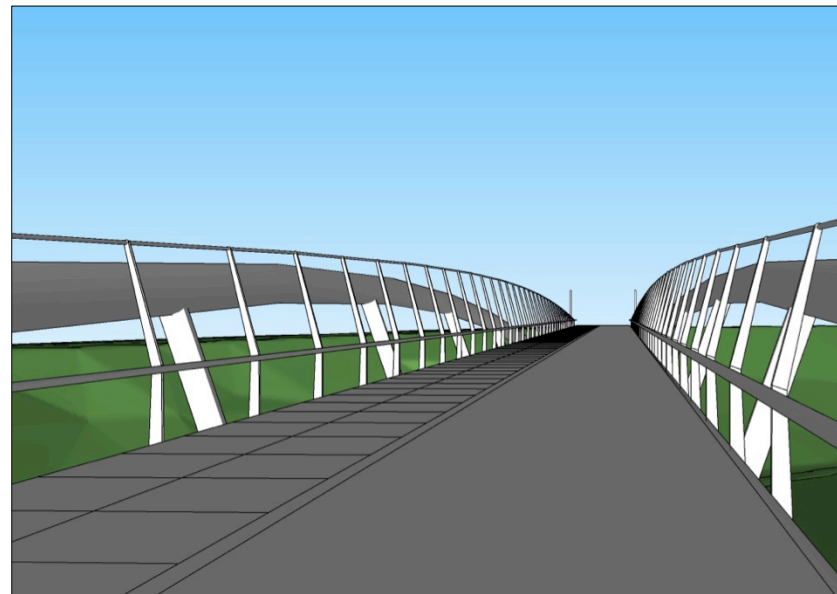
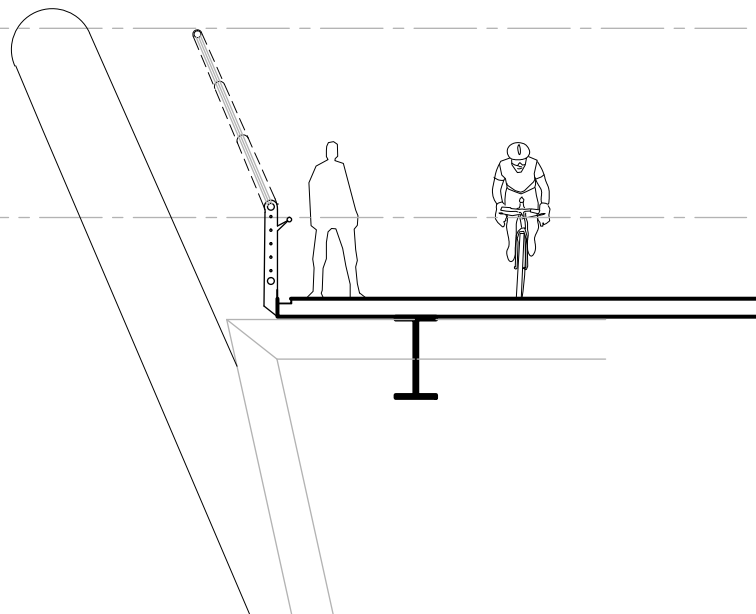
BRIDGE DECK SECTIONS

1/4 SECTION	In1e35
PROJECT NO.	1000000
SHEET NO.	BR-8

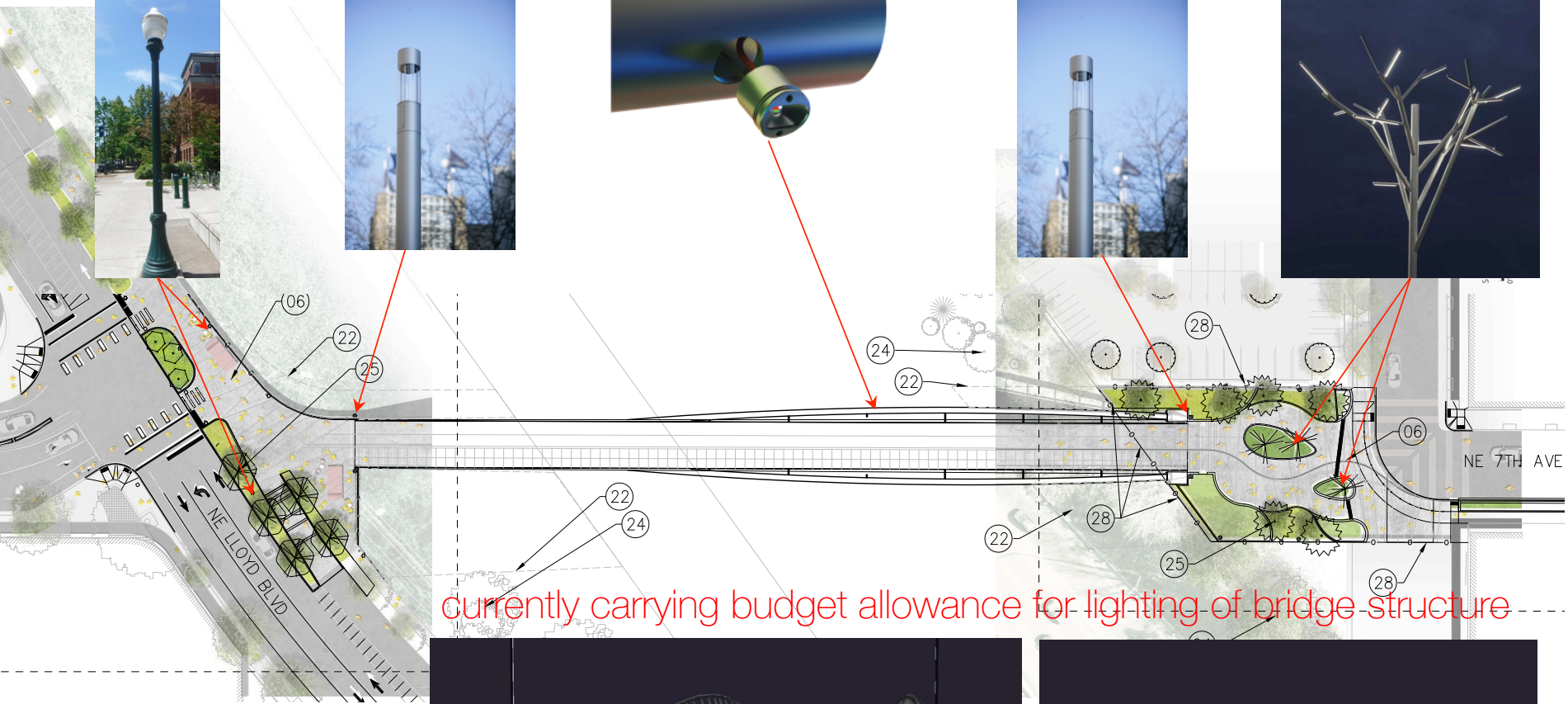




railing option 1

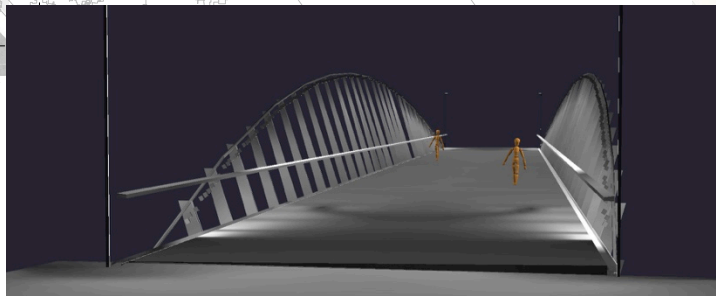


railing option 2



currently carrying budget allowance for lighting of bridge structure

lighting





color option 1 (painted steel)

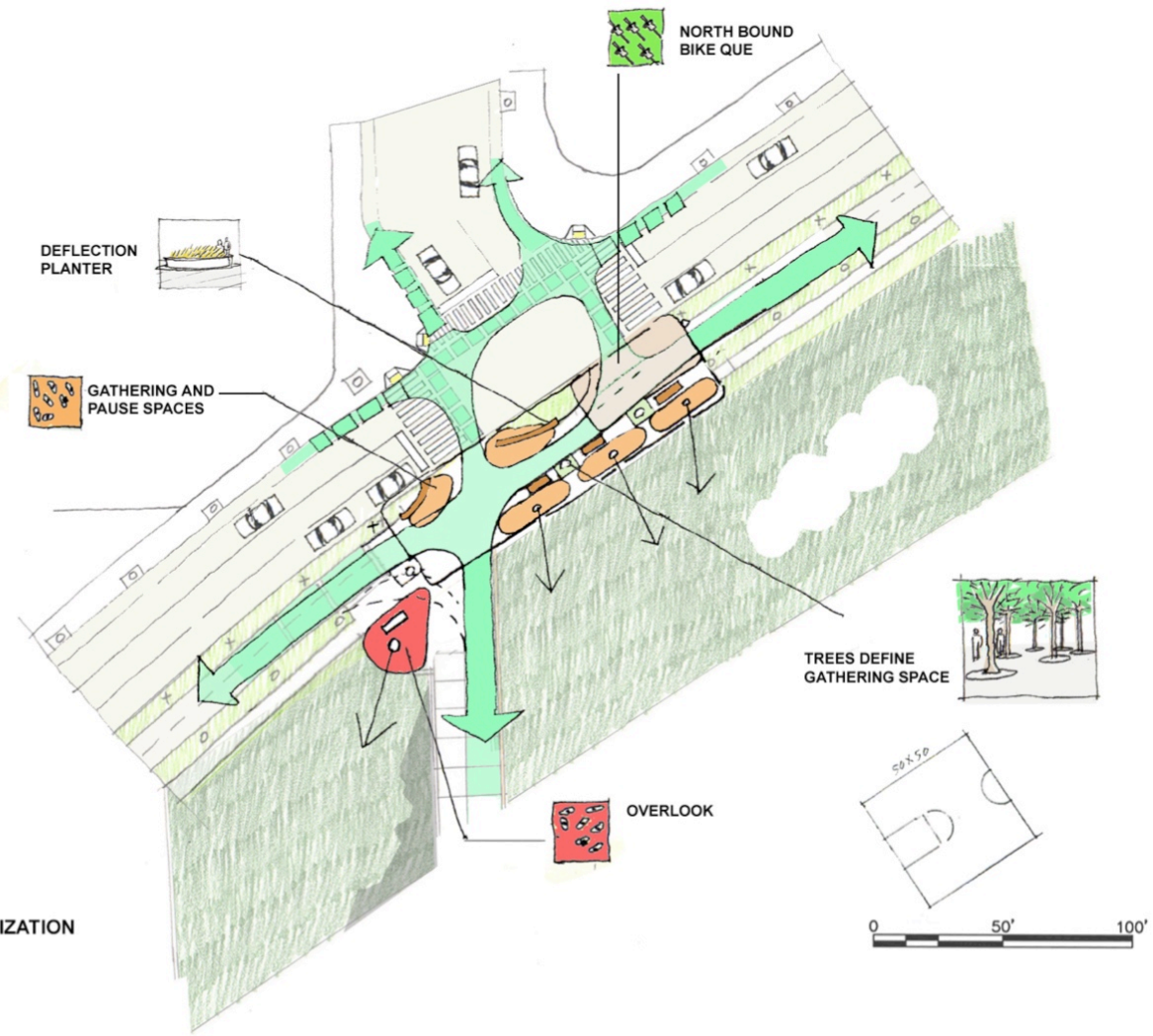


color option 1 (weathering steel)



context

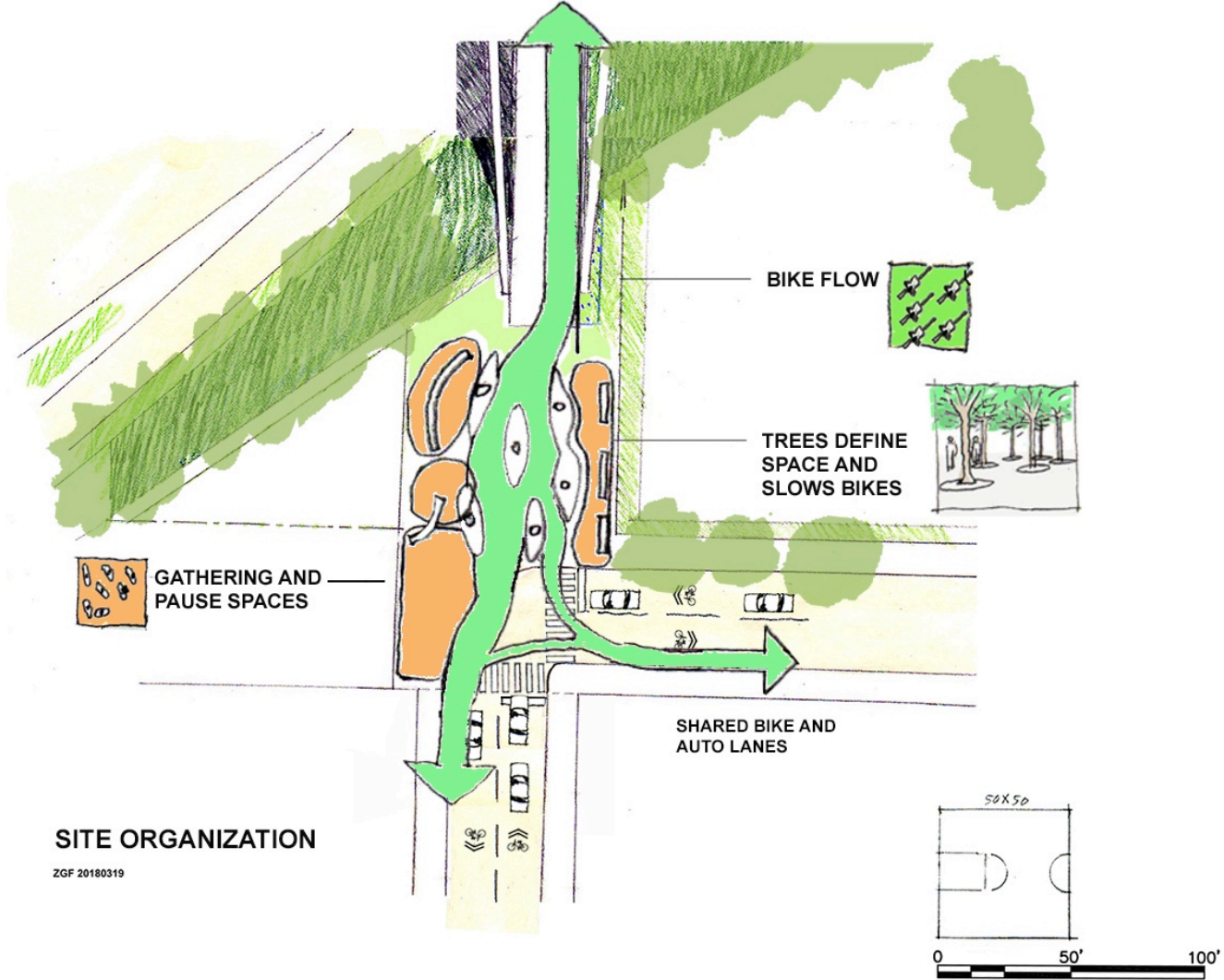




SITE ORGANIZATION

ZOF 20180319





SITE ORGANIZATION

ZGF 20180319

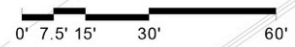


SHARED BIKE AND
AUTO LANES





N Bridgehead Plan



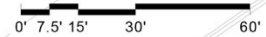


N Bridgehead Plan

0' 7.5' 15' 30' 60'



N Bridgehead Plan







S Bridge



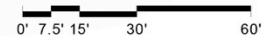


S Bridgehead Plan





S Bridgehead Plan







PBOT
PORTLAND BUREAU OF TRANSPORTATION
Commissioner: DAN SALTZMAN | Director: LEAH TREAT

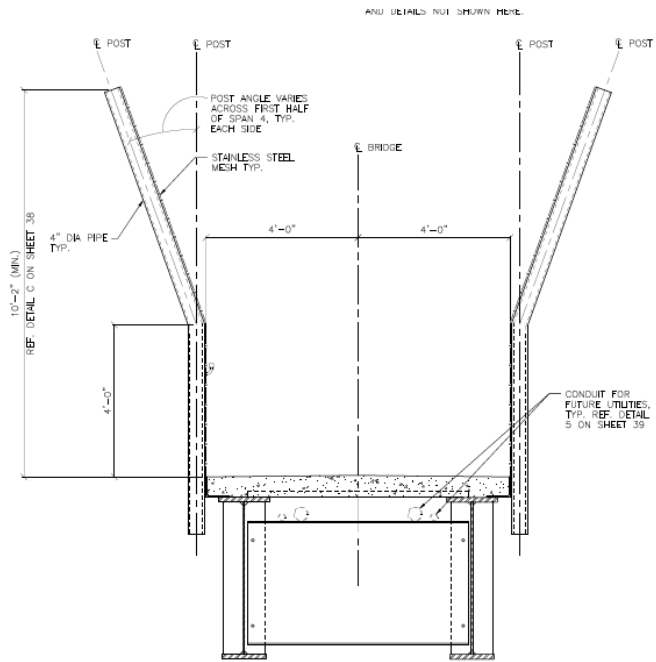


5 South
Salem

5 North 30
Seattle

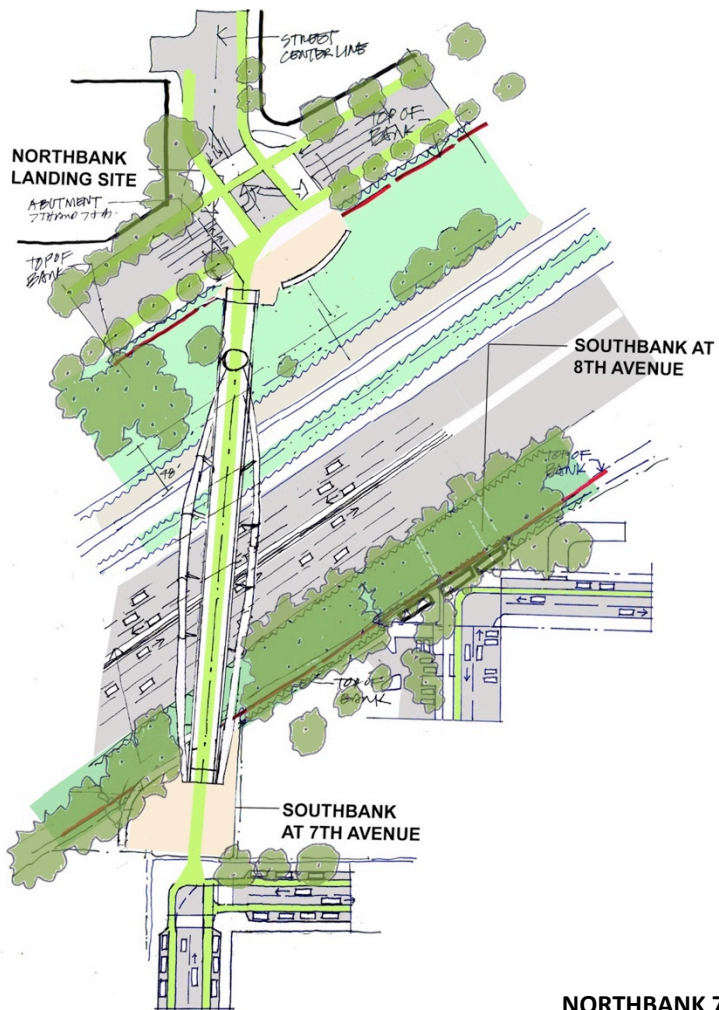
SPEED
LIMIT
50



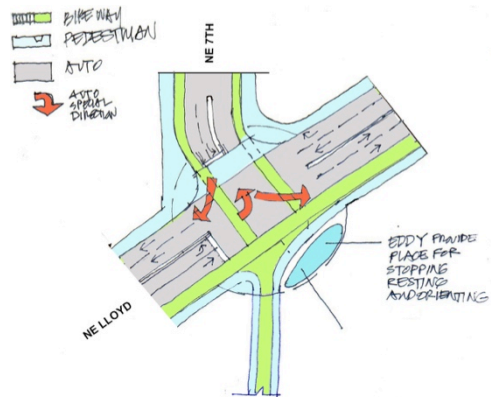




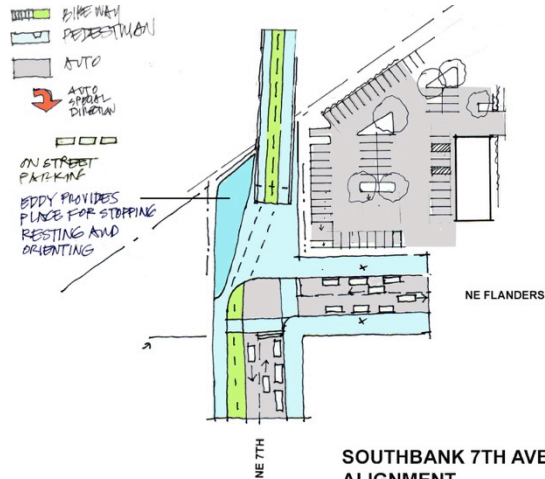




NORTHBANK 7TH TO NE 7TH



NORTHBANK 7TH AVE ALIGNMENT



SOUTHBANK 7TH AVE ALIGNMENT

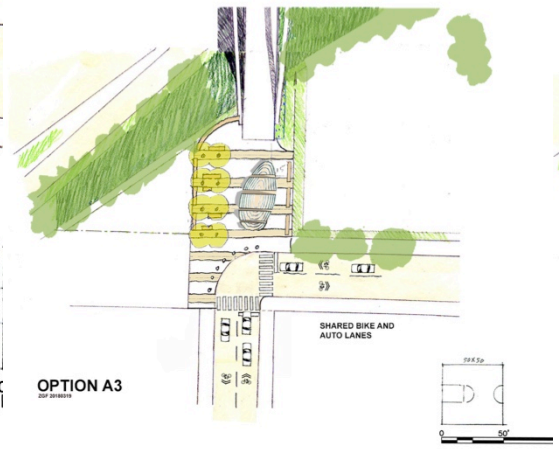
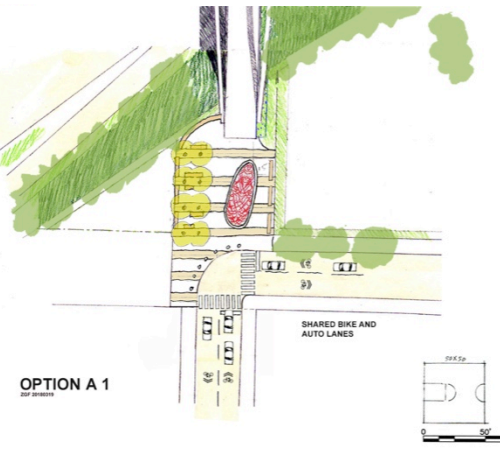
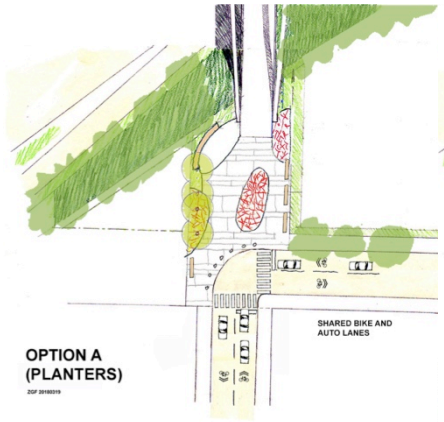






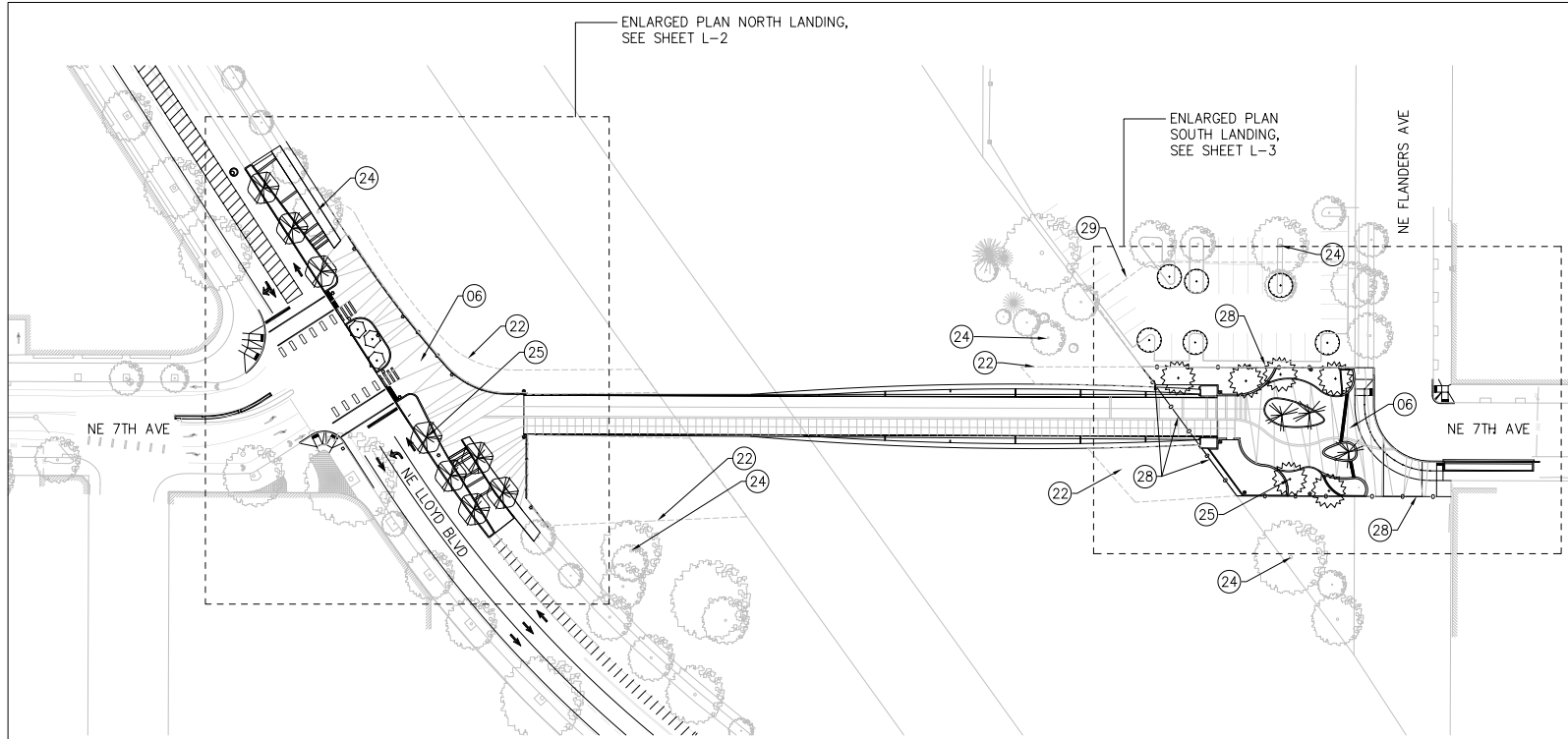
SITE ORGANIZATION

ZGF 20180319



ENLARGED PLAN NORTH LANDING,
SEE SHEET L-2

ENLARGED PLAN
SOUTH LANDING,
SEE SHEET L-3



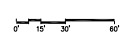
○ LANDSCAPE CONSTRUCTION NOTES

- 06 concrete paving
- 22 mitigation planting
- 24 preserve and protect existing tree, typ.
- 25 new tree, typ.
- 28 6" ht steel fence
- 29 replace landscape in parking lot staging area

ZGF
ENGINEERING ARCHITECTURE INTERIOR DESIGN
 1223 SW Washington Street
 Suite 200
 Portland, OR 97205
 T 503.224.3800
 F 503.224.2402
 www.zgf.com

30% DESIGN SUBMITTAL
 5/17/2018

WARNING
 IF THIS BAR DOES NOT MEASURE BY THEN DRAWING IS NOT TO SCALE.



NO.	DATE	DESCRIPTION	APPROVED	APPD.

DESIGNED BY T. Thelen	DATE APPROVED
DRAWN BY B. Deines	CHK. ENGINEER S. Townsend
CHECKED BY T. Thelen	

PRELIMINARY
 NOT FOR
 CONSTRUCTION

APPROVALS:	
PROJECT PRINCIPAL, ENGINEER	REG. PROF. ENGR. NO. 16339FC
CITY ENGINEER	REG. PROF. ENGR. NO. 51530PE

PBOT
 PORTLAND BUREAU OF TRANSPORTATION
 DAN SALTZMAN
 STEVE TOWNSEND, P.E.
 COMMISSIONER
 CITY ENGINEER

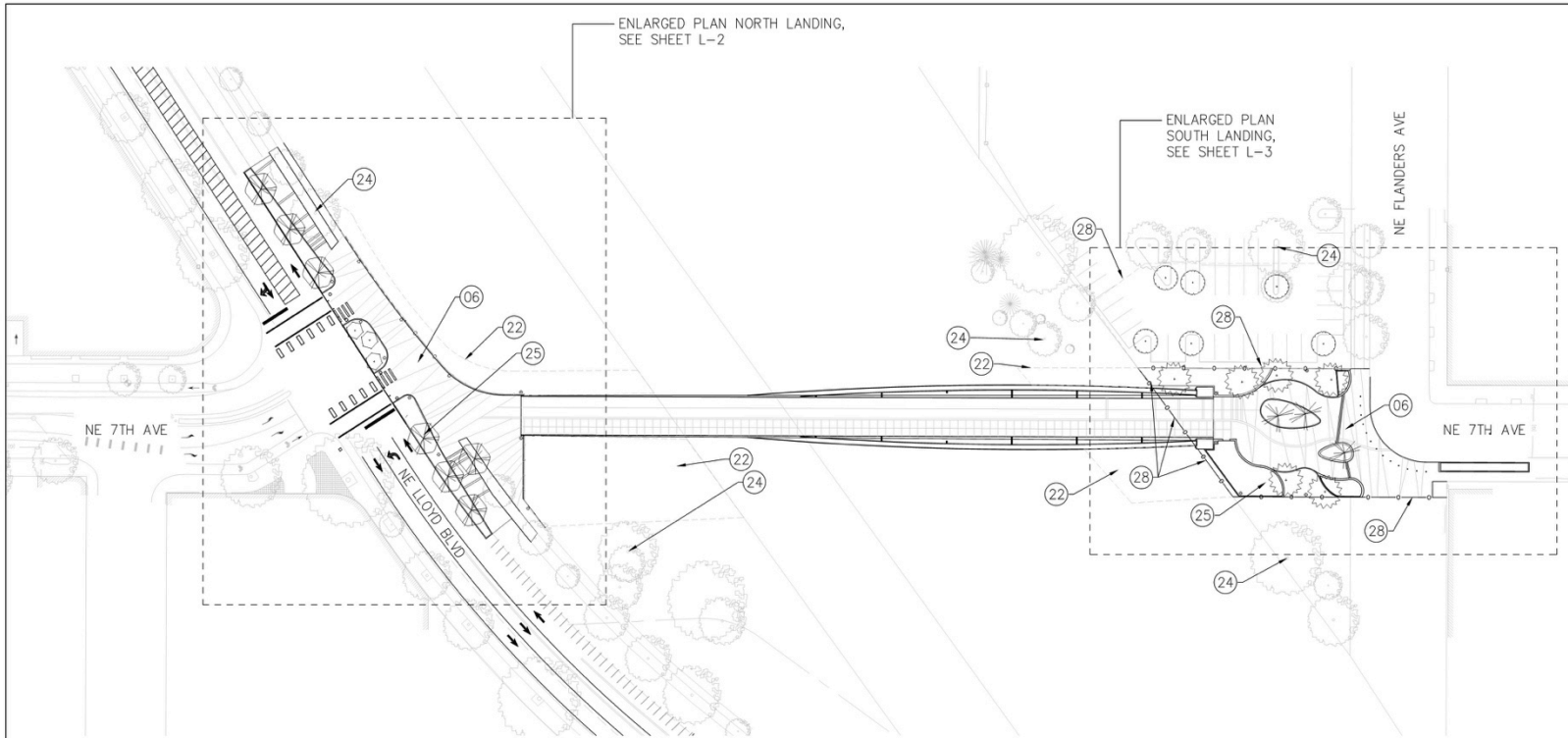


Sullivan's Crossing
 Bicycle and Pedestrian Bridge
OVERALL SITE PLAN

1/4 SECTION
 1nt35
 PROJECT NO.
 1000000
 SHEET NO.
L-1

ENLARGED PLAN NORTH LANDING,
SEE SHEET L-2

ENLARGED PLAN
SOUTH LANDING,
SEE SHEET L-3



○ LANDSCAPE CONSTRUCTION NOTES

- 06 concrete paving
- 22 mitigation planting
- 24 preserve and protect existing tree
- 25 new tree, typ.
- 28 6' ht steel fence
- 29 replace landscape in parking lot staging area

ZGF
ZIMMER GUNDEL FRASCA ARCHITECTS LP
1223 SW Washington Street
Suite 200
Portland, OR 97205
T 503.224.3800
F 503.224.2482
www.zgf.com



30% DESIGN SUBMITTAL
5/17/2018

WARNING
IF THIS BAR DOES NOT MEASURE TO THESE DIMENSIONS, THESE DIMENSIONS ARE NOT TO SCALE.

NO.	DATE	DESCRIPTION	REVISION	APP'D.

DESIGNED BY T. Thelen	DATE APPROVED
CAD BY S. Townsen	SIV. ENGINEER
CHECKED BY T. Thelen	PRINCIPAL ENGINEER

PRELIMINARY
NOT FOR
CONSTRUCTION

APPROVALS:	
PRINCIPAL ENGINEER	REG. PROF. ENGR. NO. 14339PE
CITY ENGINEER	REG. PROF. ENGR. NO. 51339PE

PBOT
PORTLAND BUREAU OF TRANSPORTATION
DAN SALTZMAN
STEVE TOWNSEN, P.E.



Sullivan's Crossing
Bicycle and Pedestrian Bridge
OVERALL SITE PLAN

174 161000
In1e35
PROJECT NO.: 10000000
SHEET NO.: L-1



LANDSCAPE CONSTRUCTION NOTES

- 01 6"ht. x 6"w cast-in-place concrete curb
- 04 extend existing planter, typ.
- 05 match existing grade at existing sidewalk
- 06 concrete paving, see civil
- 07 concrete scoring pattern
- 08 exposed concrete warning strip, 12" x 1/4"-3/8" depth
- 09 pavement warning marking, typ.
- 10 asphalt paving
- 11 12" wide cast-in-place concrete retaining wall, board form finish, see structural
- 12 42" ht. stainless steel guardrail
- 13 42" ht. stainless steel railing
- 14 pedestrian lighting, lloyd standard
- 15 pedestrian lighting
- 17 6" dia. stainless steel removable bollard
- 18 pedestrian signal light, see traffic
- 19 traffic light, see traffic
- 20 landscape planting
- 23 mitigation planting
- 24 specially planting
- 24 preserve and protect existing tree
- 25 new tree, typ.

WARNING
 IF THIS BAR DOES NOT MEASURE TO THESE DIMENSIONS IS NOT TO SCALE.



ZGF
 ZIMMER GUNDEL FRASCA ARCHITECTS LP
 1223 SW Washington Street
 Suite 200
 Portland, OR 97205
 T 503.224.3860
 F 503.224.2462
 www.zgf.com

30% DESIGN SUBMITTAL
 5/17/2018

NO.	DATE	DESCRIPTION	REVISION	APP.

DESIGNED BY T. Thelen	CHECKED BY S. Townsen
DATE APPROVED	APP.

**PRELIMINARY
 NOT FOR
 CONSTRUCTION**

PROJ. PRINCIPAL ENGINEER	REG. PROF. ENGR. NO. 14339PE
CITY ENGINEER	REG. PROF. ENGR. NO. 51539PE

PBOT
 PORTLAND BUREAU OF TRANSPORTATION
 DAN SALTZMAN
 STEVE TOWNSEN, P.E.
 COMMISSIONER
 CITY ENGINEER



Sullivan's Crossing
 Bicycle and Pedestrian Bridge
 NORTH LANDING SITE PLAN

DATE: 5/17/2018
 SHEET NO.: In1e35
 PROJECT NO.: 9000000
 L-2



LANDSCAPE CONSTRUCTION NOTES

- 01 6"ht. x 6"w cast-in-place concrete curb
- 04 extend existing planter, typ.
- 05 match existing grade at existing sidewalk
- 06 concrete paving, see civil
- 07 concrete scoring pattern
- 08 exposed concrete warning strip, 12" x 1/4"-3/8" depth
- 09 pavement warning marking, typ.
- 10 asphalt paving
- 11 12" wide cast-in-place concrete retaining wall, board form finish, see structural
- 12 42" ht. stainless steel guardrail
- 13 42" ht. stainless steel railing
- 14 pedestrian lighting, lloyd standard
- 15 pedestrian lighting
- 17 6" dia. stainless steel removable bollard
- 18 pedestrian signal light, see traffic
- 19 traffic light, see traffic
- 20 landscape planting
- 23 mitigation planting
- 24 specially planting
- 24 preserve and protect existing tree
- 25 new tree, typ.

WARNING
 IF THIS BAR DOES NOT MEASURE TO THESE DIMENSIONS IS NOT TO SCALE.



ZGF
 ZIMMER GUNDEL FRASCA ARCHITECTS LP
 1223 SW Washington Street
 Suite 200
 Portland, OR 97205
 T 503.224.3860
 F 503.224.2462
 www.zgf.com

30% DESIGN SUBMITTAL
 5/17/2018

NO.	DATE	DESCRIPTION	REVISION	APP.

DESIGNED BY T. Thelen	CHECKED BY S. Townsen
DATE APPROVED	APP.

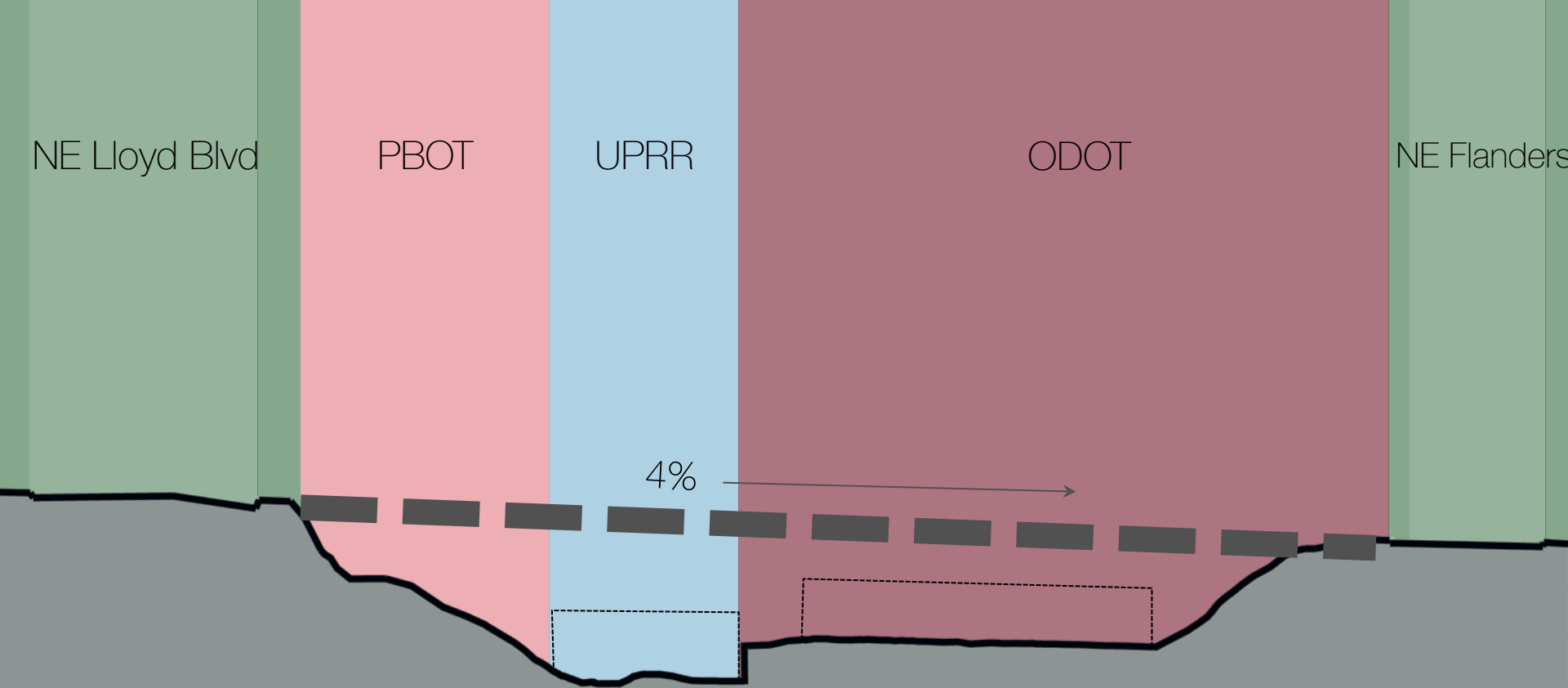
**PRELIMINARY
 NOT FOR
 CONSTRUCTION**

PROJ. PRINCIPAL ENGINEER	REG. PROF. ENGR. NO. 14339P
CITY ENGINEER	REG. PROF. ENGR. NO. 51539P

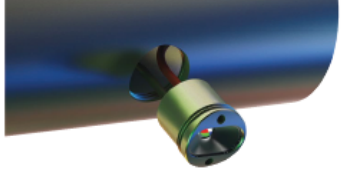
PBOT
 PORTLAND BUREAU OF TRANSPORTATION
 DAN SALTZMAN
 STEVE TOWNSEN, P.E.
 COMMISSIONER
 CITY ENGINEER



Sullivan's Crossing
 Bicycle and Pedestrian Bridge
 NORTH LANDING SITE PLAN
 SHEET NO. **L-2**

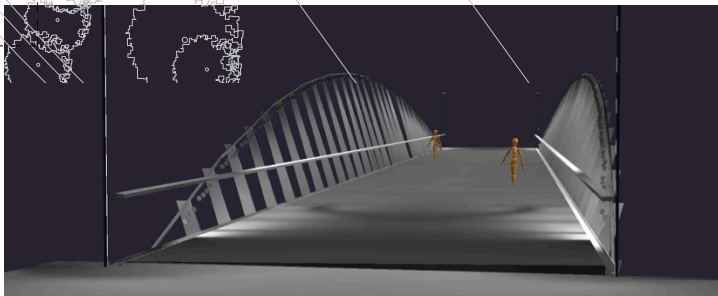


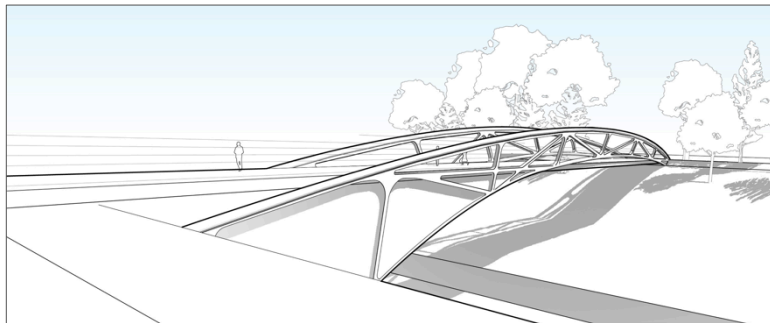
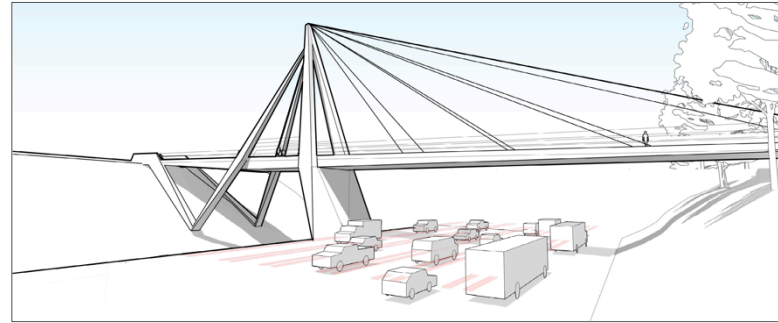
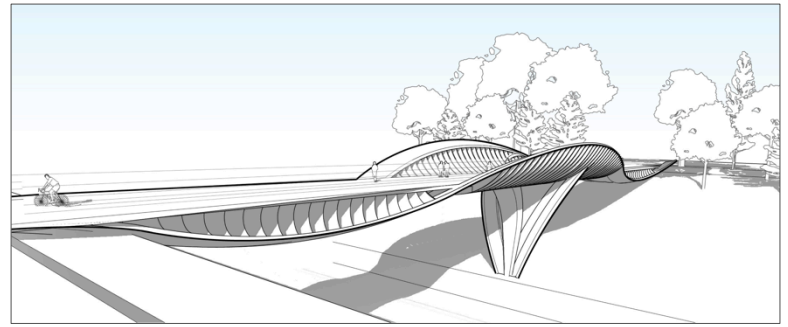
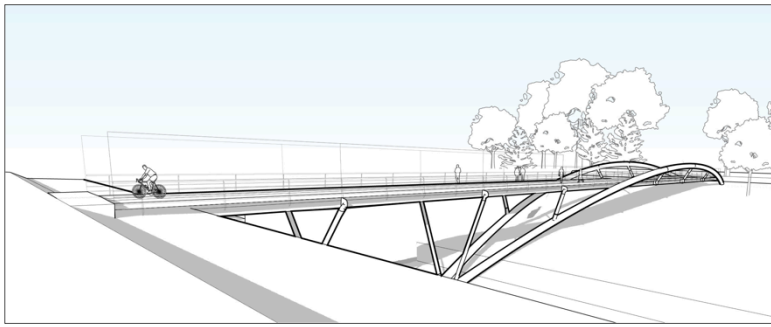
topographical section looking east



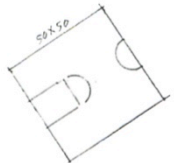
currently carrying budget allowance for lighting of bridge structure

lighting





structural systems



OPTION C

ZGF 20180319

SITE ORGANIZATION

ZGF 20180319

SITE ORGANIZATION

ZGF 20180319

