

18-100272FS

SCANNED

MAR 16 2016

**FIRE ALARM SYSTEM AFFIDAVIT FOR
ALTERATIONS OR TENANT IMPROVEMENTS**



Portland Fire & Rescue
Fire Marshal's Office
1300 SE Gideon St.
Portland, OR 97202-2419
Phone: 503-823-3712
Fax: 503-823-3925



FOR FMO USE ONLY

Permit No.: 18-100272 FS

Date: 1/2/2018

Job Address: 3911 SE MILWAUKIE AVE Suite: _____

Project Name: SACRED HEART VILLAS Occupied as: _____

Contractor: FRONTIER ELECTRIC OF WASHINGTON Phone & Fax: 360-989-7204

Address of Contractor: 7217 NE 9TH STREET, VANCOUVER, WA 98662

Valuation of work: \$ 2,050.00 CO Permit: # _____

Description of Work: FIRE ALARM CIRCUIT BOARD REPLACEMENT - LIKE FOR LIKE

Total number of devices added or moved under this permit process:

No. of Proposed Smoke/Heat Detectors: To be Added (max 5) 0 / To be Relocated (max 5) _____

No. of Proposed Manual Alarm Stations: To be Added (max 5) 0 / To be Relocated (max 5) _____

No. of Proposed Notification Appliances: To be Added (max 2) 0 / To be Relocated (max 5) _____

I, JASON STEVENSON certify the following is true and defines the scope of work for this project:

- a) All work complies with the current state-adopted NFPA-72 and the authority having jurisdiction.
- b) All notification appliances are located in accordance with the current state-adopted NFPA-72.
- c) Smoke/Heat detector spacing complies with current state-adopted NFPA-72 and the authority having jurisdiction.
- d) Exposed wiring will not be covered until inspected.
- e) **Final approval shall be subject to on-site tests and inspections.**
- f) Voltage drop is adequate to operate all appliances.
- g) Battery supplies are capable of supporting the system modifications.
- h) Compatibility of appliances and devices are in accordance with the FACP manufacturer's specifications.

In addition, I understand the following is required: 1) A sketch attached to this document showing the area of work within the building's structure; 2) An electrical permit; and 3) Cut sheets of any new devices added to the system.

At the time of final inspection these documents are required to be provided to the FMO and to the system owner: 1) As built drawings detailing the work performed; 2) Record of completion (form 300.91B).

<http://www.portlandoregon.gov/fire/58368>

End of line voltage tests required at acceptance test; system on DC, battery volts recorded, end of line voltage recorded in alarm condition, then adjusted to reflect voltage at end of battery life condition, 20.4. The remaining end of line voltage must be greater than the listed voltage for the devices on that circuit.

Adjusted end of line voltage under 18 volts will require full battery calculations.

The FMO reserves the right to require plans and calculations as determined during the field inspection.

Signature: [Signature] Date: 1/2/2018

Print Name: JASON STEVENSON

18-100272 FS

Fire Alarms/Alteration

Recd: 01/02/18

SACRED HEART VILLAS

Issued: 01/02/18

ALARM - FIRE ALARM CIRCUIT BOARD REPLACEMENT - LIKE FOR LIKE

R068900980

1S1E11CA 17501

Addition BENEDICTINE HTS

Lot/Blk1/Legal BLOCK 7

Lot/Blk2 LOT 8&10&13-16

Lot/Blk3 POTENTIAL ADDITIONAL TAX

Fire Contractor

JASON STEVENSON-FRONTIER EL OF WASHI
7217 NE 99TH ST
VANCOUVER, WA 98662
Work 3609897206

Owner

CARITAS SACRED HEART
2740 SE POWELL BLVD
PORTLAND, OR 97202-2050

Owner

VILLA LLC
2740 SE POWELL BLVD
PORTLAND, OR 97202-2050

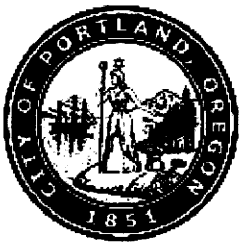
Applicant

JASON STEVENSON-FRONTIER EL OF WASHI
7217 NE 99TH ST
VANCOUVER, WA 98662
Work 3609897206

Project Details:

Fire System Valuation	2050
Building, New Const or Existing	Existing
Coverage	Other
Fire Alarm Type	Other

01-10-18 Okay to Final. Pena



City Of
PORTLAND OREGON

PORTLAND FIRE & RESCUE

Prevention Division
1300 SE Gideon St., Portland OR 97202-2419



FIRE SYSTEMS PERMIT

18-100272-000-00-FS

Site Address: 3911 SE MILWAUKIE AVE
SACRED HEART VILLAS

Issued: 1/2/18

PROJECT INFORMATION		Occ. Group	Const. Type
Fire Alarms	Alteration		
Project Description: ALARM - FIRE ALARM CIRCUIT BOARD REPLACEMENT - LIKE FOR LIKE			

APPLICANT	FRONTIER EL OF WASHINGTON *JASON STEVENSON*	Phone (360) 989-7206
PROPERTY OWNER	CARITAS SACRED HEART & VILLA LLC	Phone
CONTRACTOR	FRONTIER EL OF WASHINGTON *JASON STEVENSON*	Phone

Project Details Building, New Const or Existing Existing Fire Alarm Type Other	Project Details Coverage Other Fire System Valuation 2050 <i>ALL over-the-counter (Affidavit) permits require an inspection.</i> Sign: Inspected Request Phone Number: 503-823-1199
---	--

OVER THE COUNTER *Final 1-11-18*

--

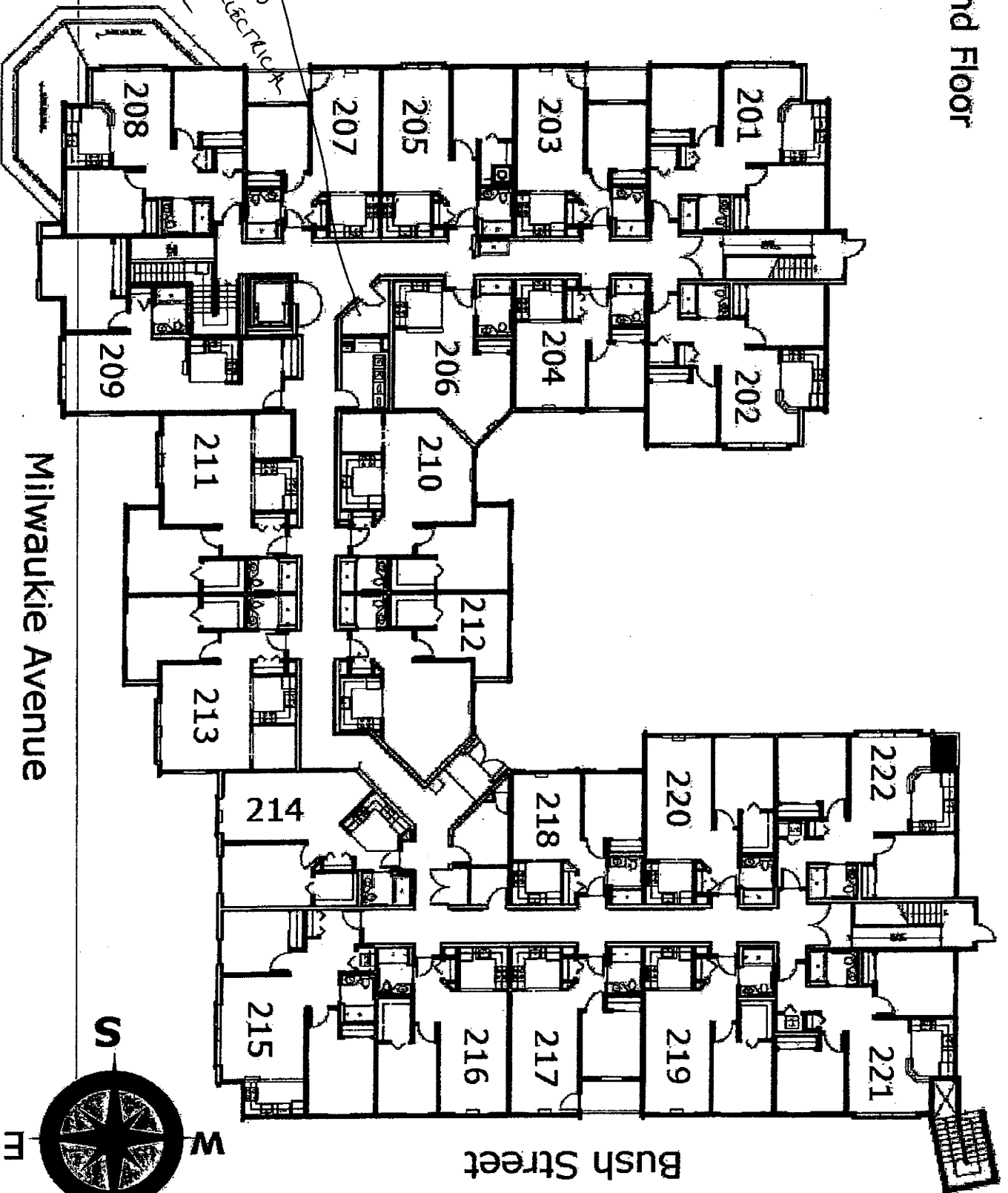
CERTIFICATION REQUIRED	With the exception of Fire Alarm, Special Hazards, and Paint Booth permits, all permitted work must be performed by or under the direct supervision of an individual with a valid Certificate of Fitness from the Fire Marshal's Office.
-------------------------------	--

CITY CONTACT E-Mail:	Phone: Fax: (503) 823-3925
--------------------------------	-------------------------------

INSPECTION REQUEST PHONE NUMBERS TDD: (503) 823-6868 IVR Inspection Request Number: 4139384	FIRE SYSTEM PERMITS - Call before 6:00 am, Mon. - Fri. (503) 823-1199
---	--

2nd Floor

Center Street



Milwaukie Avenue

Bush Street



**SILENT
KNIGHT**

by Honeywell

IntelliKnight® Model 5820XL Addressable Fire Alarm Control System

**The IntelliKnight System is the easy way
to make the most of fire alarm technology.**

IntelliKnight 5820XL is the first fire alarm system to provide you with revolutionary value and performance in addressable sensing technology. The 5820XL FACP offers exclusive, built-in digital communication, distributed intelligent power, a modular design and an expanded, easy to use interface. Powerful features such as drift compensation and maintenance alert are delivered in this powerful FACP from Silent Knight.

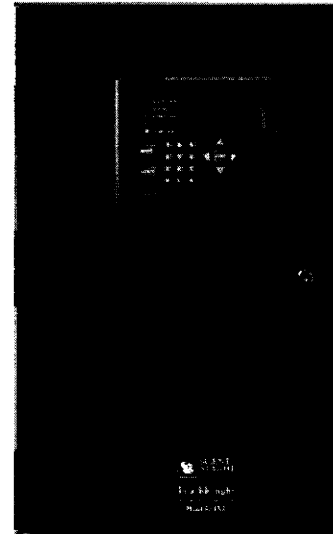
For more information about the 5820XL system, or to locate your nearest source, please call 800-328-0103.

Description

5820XL is an intelligent addressable fire alarm control panel (FACP). The basic 5820XL system can be expanded by adding modules such as 5860 remote annunciator, 5815XL signalling line circuit expander, 5824 serial/parallel printer interface module (for printing system reports), and 5895XL intelligent power module. 5820XL supports SD or SK devices. 5820XL also features a powerful built-in dual line fire communicator that allows for reporting of all system activity to a remote monitoring location.

Features

- Built in support for 99 SK detectors and 99 SK modules, expandable to 396 SK detectors and 396 SK modules using System Sensor protocol
- Built in support for 127 SD devices, expandable to 508 SD devices using the SD protocol.
- Uses standard wire—no shielded or twisted pair required
- Built-in digital communicator
- Central station reporting by point or by zone
- Built-in synchronization for appliances from AMSECO®, Gentex®, Faraday, System Sensor, and Wheelock®
- Flexput™ I/O circuits
- Supports Class B (Style 4) and Class A (Style 6) configuration for SLC, SBUS, and Flexput circuits
- 13 pre-programmed output cadences (including ANSI-3.41) and 4 programmable outputs
- Built-in annunciator with 80-character LCD display
- RS-485 bus provides communication to system accessories
- Built-in RS-232 and USB interface for programming via PC
- Built-in Form C trouble relay rated at 2.5 amps at 27.4 VDC
- Improvements in SKSS software deliver five times faster uploads/downloads
- Two built-in Form C programmable relays rated at 2.5 amps at 27.4 VDC
- Plex-1 door option combines a dead front cabinet door with a clear window, limiting access to the panel while providing single button operation of the reset and silence functions



Model 5820XL

- 6 amp power supply and maximum charging capacity of 35 amp hours (An additional cabinet enclosure is required for batteries in excess of 18 amp hours)
- Programmable date setting for Daylight Saving Time

Installation

The 5820XL can be surface or flush mounted

Compatibility

The 5820XL signal line circuit (SLC) supports multiple device types of the same protocol:

- SK (System Sensor)
- SD

You cannot mix SD and SK SLC devices on a FACP.

18-100272 FS

IntelliKnight Model 5820XL Addressable Fire Alarm Control Panel

Indicator Lights

General Alarm (Red): Flashes when in alarm; solid when alarm silenced

Supervisory (Yellow): Flashes when a supervisory condition exists; solid when supervisory silenced

System Troubles (Yellow): Flashes when a trouble condition exists; solid when trouble silenced

System Silenced (Yellow): On when an alarm, trouble or supervisory condition has been silenced but not yet cleared

System Power (Green): Flashes for AC failure; solid when power systems are normal

System Application

5820XL has one built-in signalling line circuit (SLC) which supports multiple devices dependent on protocol being used. Three additional loops can be added using the 5815XL SLC expanders to increase overall capacity.

The 5820XL SLC loops support multiple device types, including:

- Addressable photoelectric smoke detector
- Addressable ionization smoke detector
- Addressable heat sensor
- Addressable duct smoke detector
- Contact module
- Relay output module
- Addressable notification module
- Addressable beam detector (SK protocol only)
- Addressable multi-criteria smoke detector (SK protocol only)
- Addressable multi modules (SK protocol only)

The following advanced sensor capabilities are available with 5820XL:

- Automatic drift compensation
- Maintenance alert
- Built-in sensor test to comply with NFPA 72 calibration testing requirements

5820XL features a 6 amp power supply and maximum battery charging capacity of 35 amp hours. An additional cabinet enclosure (PN RBB) is required for batteries in excess of 18 amp hours. Flexput circuits on 5820XL control can be individually programmed to function as notification circuits, auxiliary power outputs, or initiation circuits that support both 2- and 4-wire smoke detectors.

The 5820XL system operates on non-twisted, unshielded cable when wired in compliance with standard wiring practices as called out in the National Electric Code 760-51 specifications for power-limited fire protective signalling cables. No special wiring is required. 5820XL provides 13 preset notification cadence patterns (including ANSI 3.41) and four user programmable selections for fire alarm notification.

Two programmable general purpose Form C relay outputs are provided on 5820XL.

Additionally, the IntelliKnight system features a built-in walk test and auto-programming. Its innovative, dead-front cabinet design allows for flush or surface mounting. System maintenance is easy to perform.

User Interface

The 5820XL built-in annunciator with 80 character LCD display and large easy-to-use tactile touchpad can be used for system operation, programming and maintenance. It has five LEDs for alarm, supervisory, system trouble, system silenced and system power. System operations include silencing alarms and troubles, resetting alarms and the display of alarm troubles and memory. The system's non-volatile event history buffer stores 1000 events for viewing from the built-in or remote annunciator. System operation can be initiated with a mechanical firefighter's key or a valid 4- to 7-digit operator's code.

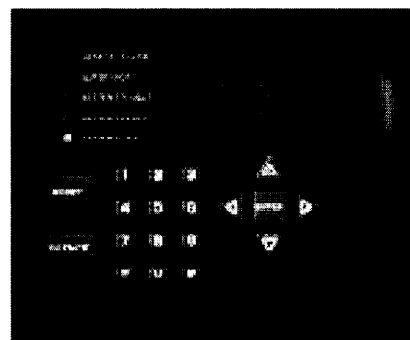
Programming

The IntelliKnight system offers several options to simplify and speed up programming. The JumpStart® feature minimizes programming

required to start a new system. The built-in keypad and 5860 remote annunciator give on-site access to all programming. You can also program remotely using the 5660 Silent Knight Software Suite, which is Windows®-based software.

Built-In Digital Communicator

5820XL features a built-in UL listed digital communicator for remote reporting of system activity and system programming. The communicator has the ability to seize two telephone lines to report alarms and troubles to a monitoring facility. The communicator supervises two phone lines and will activate a trouble signal if a line failure is sustained for more than 45 seconds. Other communication features include: retry if communication fails, two phone number capability, download phone number capability and Touch-Tone or rotary dialing. The communicator is compatible with SIA and Ademco Contact ID. The format is selectable by account number.

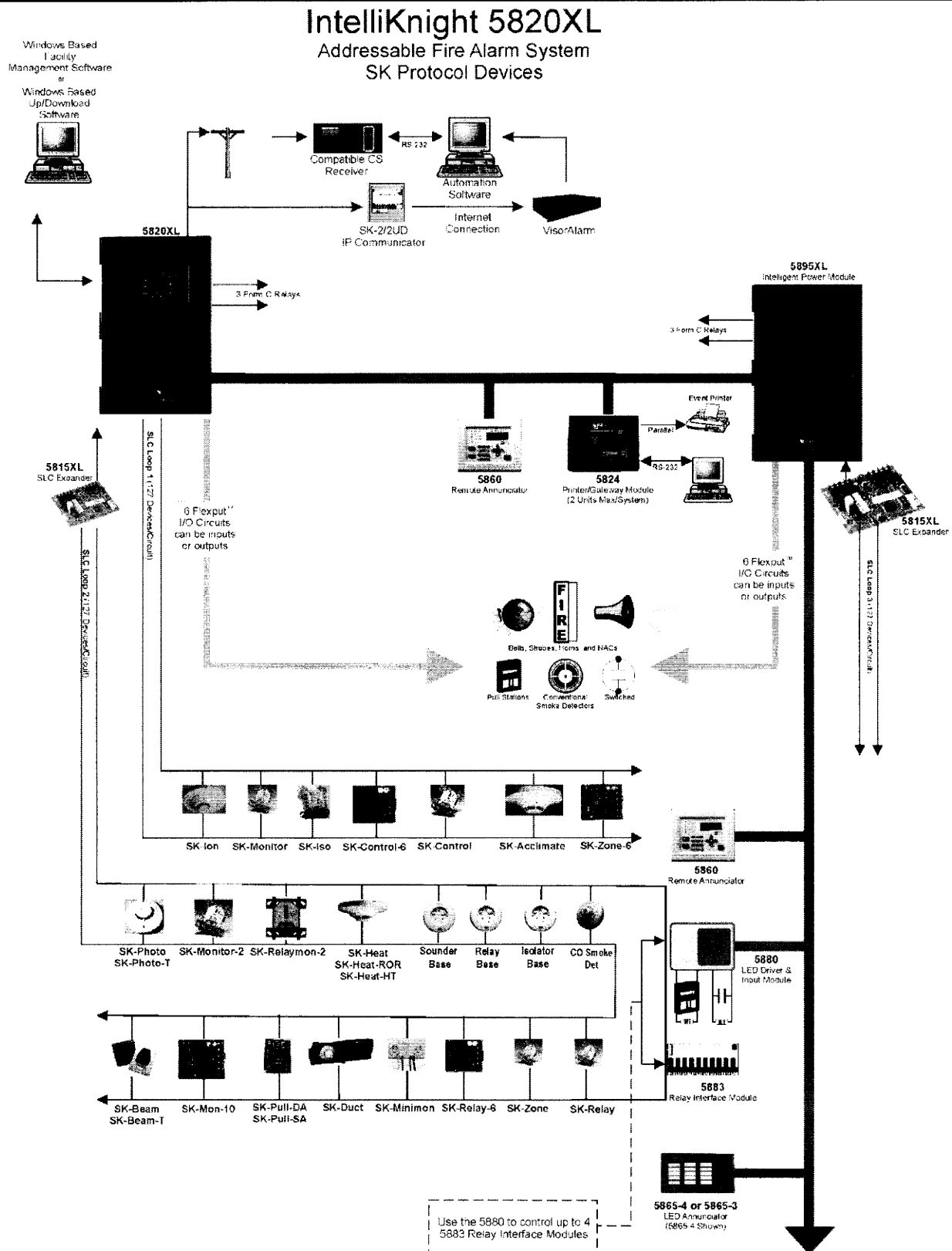


Approvals

NFPA 13, NFPA 15, NFPA 16, NFPA 72: Central Station; Remote Signalling; Local Protective Signalling Systems; Auxiliary Protected Premises Unit; & Water Deluge Releasing Service. Suitable for automatic, manual, waterflow, sprinkler supervisory (DACT non-coded) signalling services.

Other Approvals: UL Listed; CSFM 7165-0559:0135; MEA 429-92-E Vol. VI; FM Approved

IntelliKnight Model 5820XL Addressable Fire Alarm Control Panel



IntelliKnight Model 5820XL

Addressable Fire Alarm Control Panel

Specifications

Electrical

Primary AC:

120 VRMS at 50/60 Hz, 2.5A or
240 VRMS at 50/60 Hz, 1.4A

Total Accessory Load: 6A @ 27.4 VDC,
power-limited

Standby Current: 215 mA

Alarm Current: 385 mA

Flexput Circuits:

Six programmable circuits which can be
programmed individually as:

Notification circuits: 3A @ 27.4 VDC
per circuit, power-limited

Auxiliary power circuits: 3A @ 27.4VDC
per circuit, power-limited

Initiation Circuits: 100 mA @ 27.4VDC
per circuit, power limited

Physical

Flush Mount Dimensions:

14.5"W x 24.75"H x 3.9"D
(36.8 W x 62.9 H x 9.8 D cm)

Overall Dimensions:

16.2"W x 26.4"H x 4.2"D
(40.6 W x 67 H x 11.8 D cm)

Weight: 28 lbs. (12.8 kg)

Color: Red

Battery Charging Capacity: 7.0-35 AH

Battery Size: 18 AH max allowed in
control panel cabinet. Larger capacity
batteries can be housed in RBB
accessory cabinet.

Telephone Requirements:

FCC Part 15 and Part 68 approved

Type of Jack: RJ31X (two required)

S-BUS Accessories

5860/R Remote Fire Annunciator

Features the same 80 character backlit
LCD display keypad and firefighter's
keyswitch as the 5820XL. 5860 is gray
and 5860R is red.

5815XL Signal Line Circuit Expander

The SLC expander is used to add more
addressable devices to the IntelliKnight
system. 5820XL supports three
5815XL's. Each 5815XL can support 99
SK detectors and 99 SK modules or
127 SD devices.

5895XL Intelligent Power Module

Adds 6 amps of power, 6 Flexput I/O
circuits and 2 Form C relay circuits to a
5820XL system.

5496 Intelligent Power Module

A 6 amp notification power expander
that provides four power-limited notifi-
cation appliance circuit outputs.

5880 LED/IO Module

Features 40 LED outputs, 8 normally
open dry contact inputs, and one piezo
output.

5865-3 and 5865-4

Remote LED Annunciator

Features 30 programmable LED (15
red and 15 yellow) outputs, and a piezo
sounder. The 5865-4 adds a silence
and reset switch to the package.

5883 Relay Board

Features 10 general purpose Form C
relays. Used with 5880 module.

5824 Serial/Parallel Printer Interface Module

Provides one parallel and one RS-232
serial port for connecting a printer to
the 5820XL. Use to print a real-time log
of system events, detector status
reports, and event history. Interfaces
with building control system.

Miscellaneous Accessories

5660 Silent Knight Software Suite (SKSS)

User-friendly Windows software for
remote programming of 5820XLs using
a PC. Upload and view panel account
information, event history, and detector
status.

5670 Silent Knight Software Suite (SKSS)

Powerful end-user facility management
software allows viewing of detector
status and event history via modem or
direct connection.

Plex-1

Dead front cabinet door with clear
window to limit access to the FACP.

RBB

Remote battery box accessory cabinet.
Use if backup batteries are too large to
fit into FACP cabinet. Dimensions:
16" W x 10" H x 6" D
(406 mm W x 254 mm H x 152 mm D)

SD505-DTS-K

Remote test switch. Used with
SD505-DUCTR. Provides remote key
operated test function and annunciation
of detector alarm.

SD and SK Devices

See the specification sheets listed
below for a complete listing of the SD
and SK devices.

53624 SD Devices Data Sheet

53623 SK Devices Data Sheet



**SILENT
KNIGHT**

by Honeywell

This document is not intended to be used for installation purposes. We try to keep our
product information up-to-date and accurate. We cannot cover all specific applications
or anticipate all requirements. All specifications are subject to change without notice.
For more information, contact Silent Knight 12 Clintonville Road, Northford, CT 06472
Phone: (203) 484-7161, Fax: (203) 484-7118. www.silentknight.com.

Made in America

PN 350210 Rev J

© 2017 Honeywell International Inc.