

C O N N E C T I O N





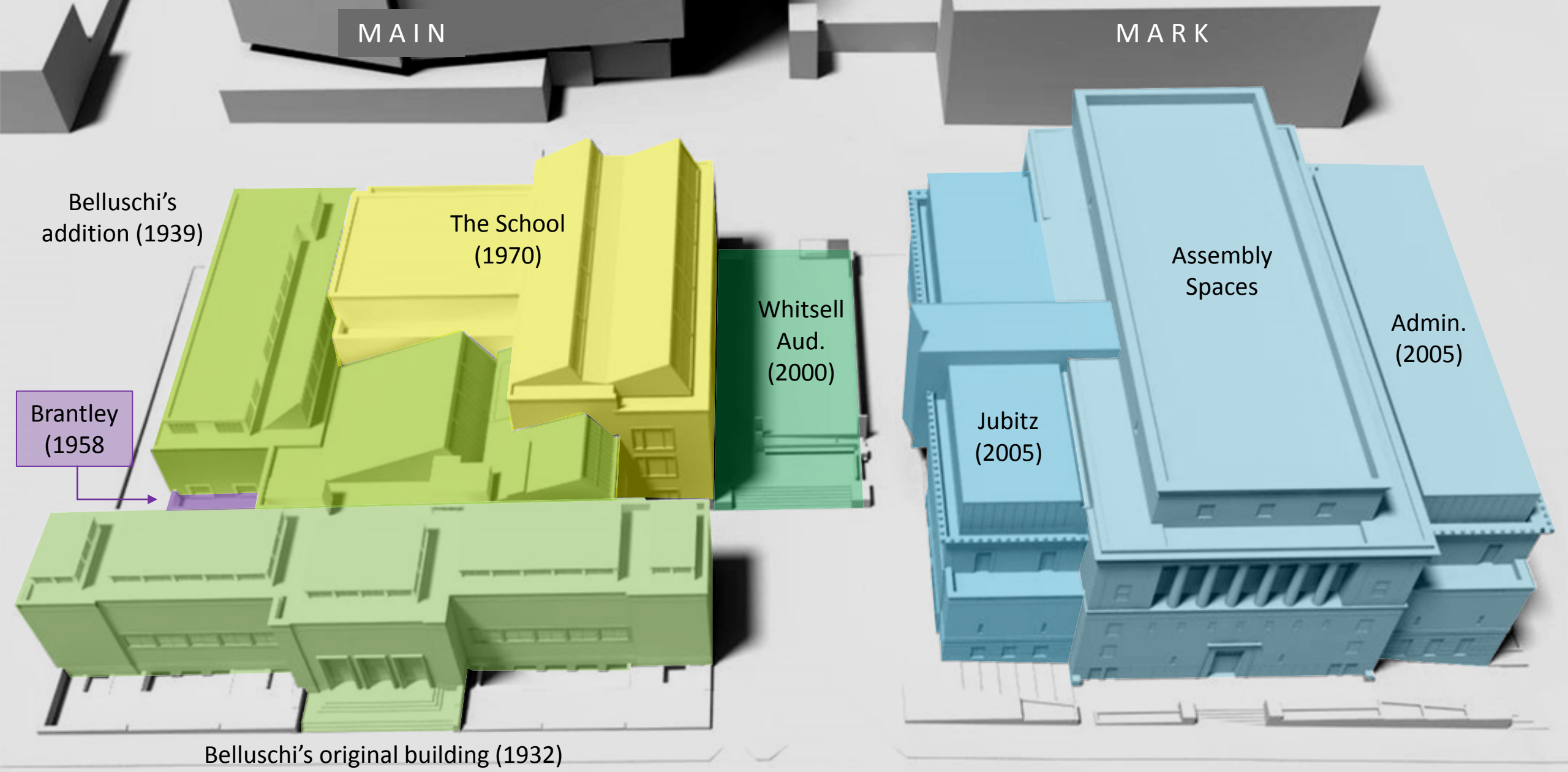
Portland Art Museum

PORTLAND, OREGON

L. H. HOFFMAN A. E. DOYLE & Assoc.
Builder Architects

Taken APRIL 19 1932





Belluschi's
addition (1939)

The School
(1970)

Brantley
(1958)

Whitsell
Aud.
(2000)

Jubitz
(2005)

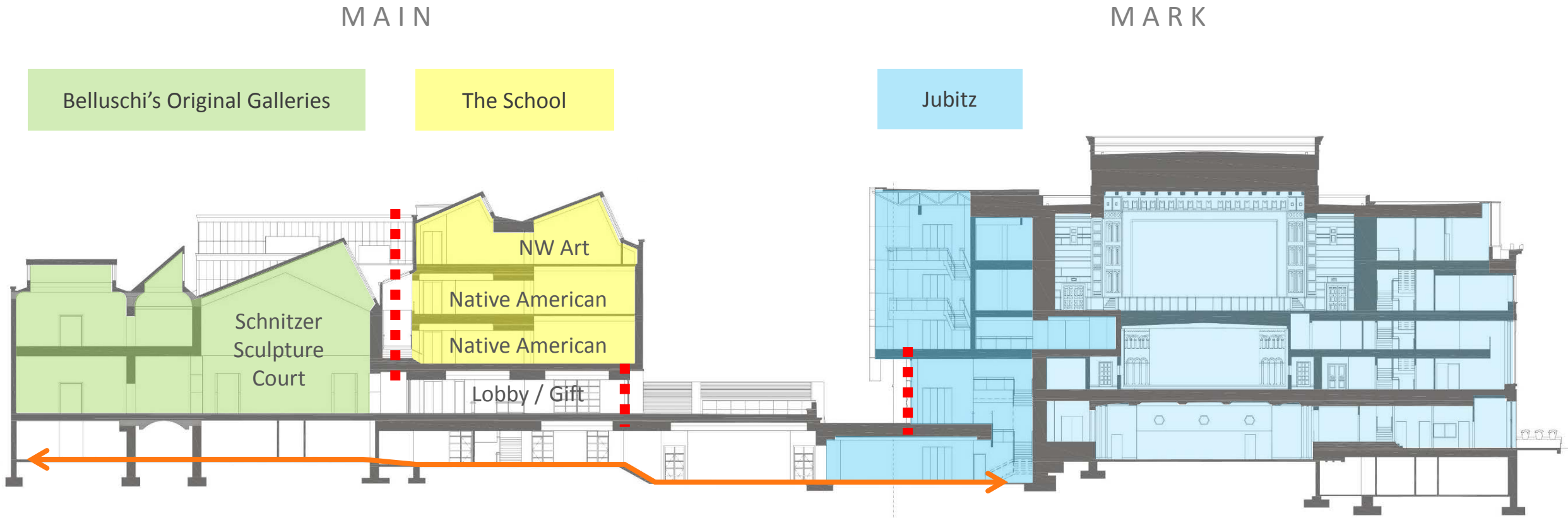
Assembly
Spaces

Admin.
(2005)

Belluschi's original building (1932)

Campus Overview

Connectivity: Existing Problems



Gallery zones are not linked
Circulation is confusing
Connectivity only exists at the basement level

Existing barriers to horizontal circulation

Goal: *Improved connectivity across the campus*

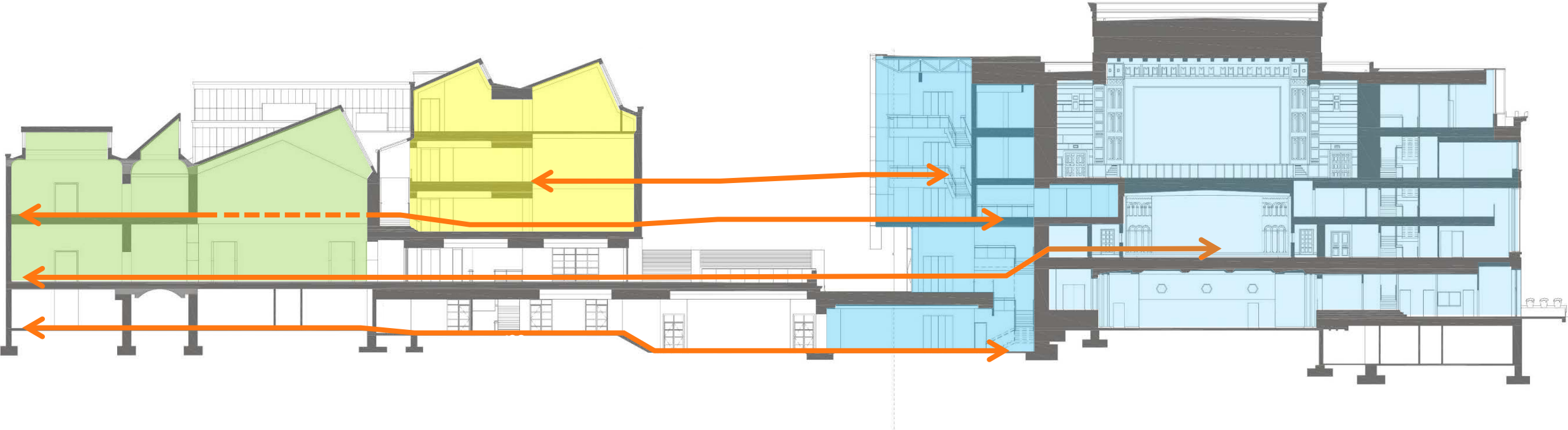
MAIN

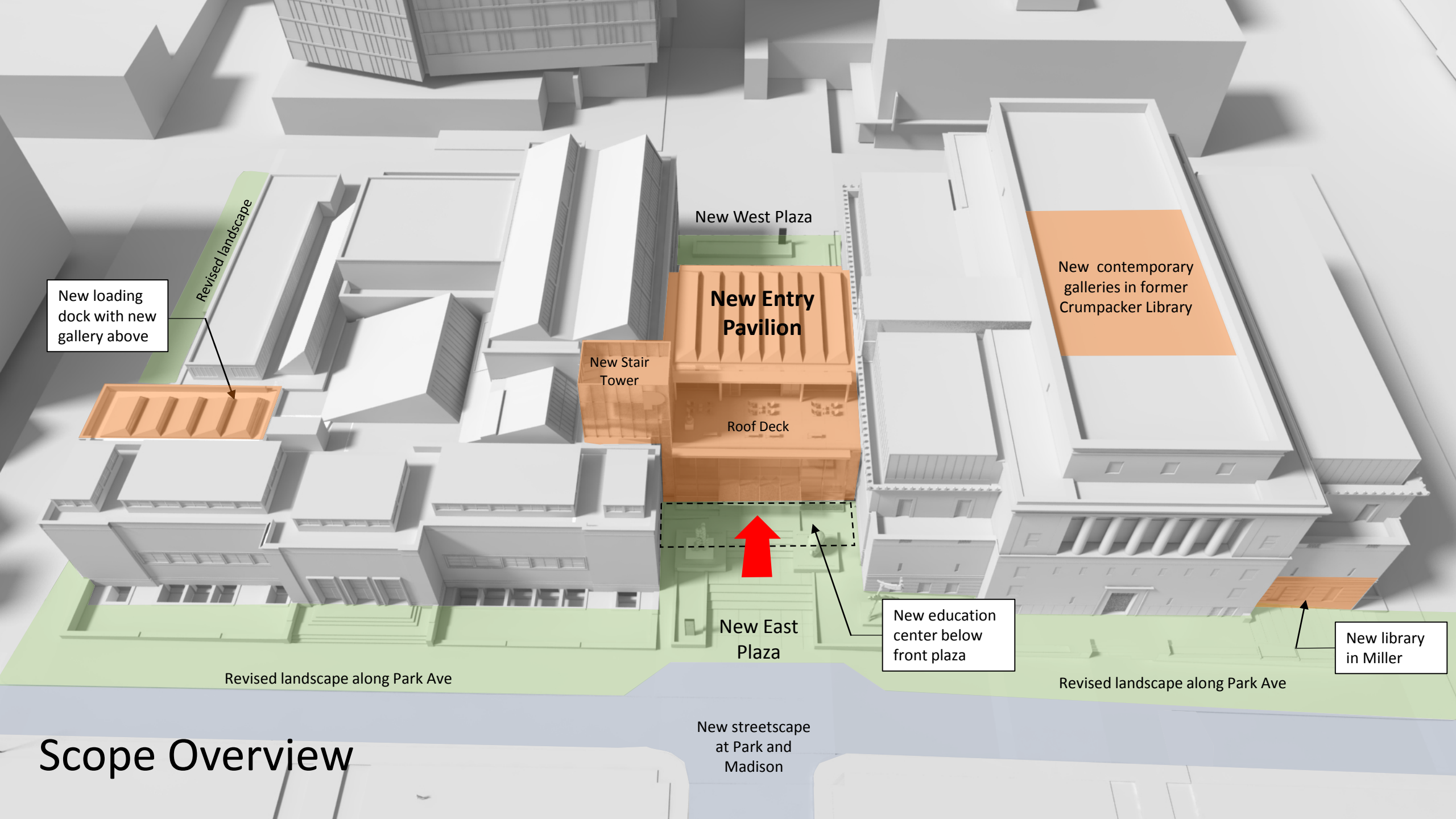
MARK

Belluschi's Original Galleries

The School

Jubitz





New loading dock with new gallery above

Revised landscape

New West Plaza

New Entry Pavilion

New Stair Tower

Roof Deck

New contemporary galleries in former Crumpacker Library

New East Plaza

New education center below front plaza

New library in Miller

Revised landscape along Park Ave

Revised landscape along Park Ave

New streetscape at Park and Madison

Scope Overview



Bird's eye view



Bird's eye view

60,000

adults, children & families
attend more than

150 programs

30,000

students

450

schools &
community orgs

600

teachers











Wordstock

Portland's Book Festival

Saturday, Nov. 5 at the Portland Art Museum and neighboring venues









Community Commons, facing Main Building