



PORTLAND PARKS & RECREATION

Healthy Parks, Healthy Portland



Washington Park Master Plan Update

March 15, 2018

Emily Roth, Senior Planner

Washington Park Today

37348



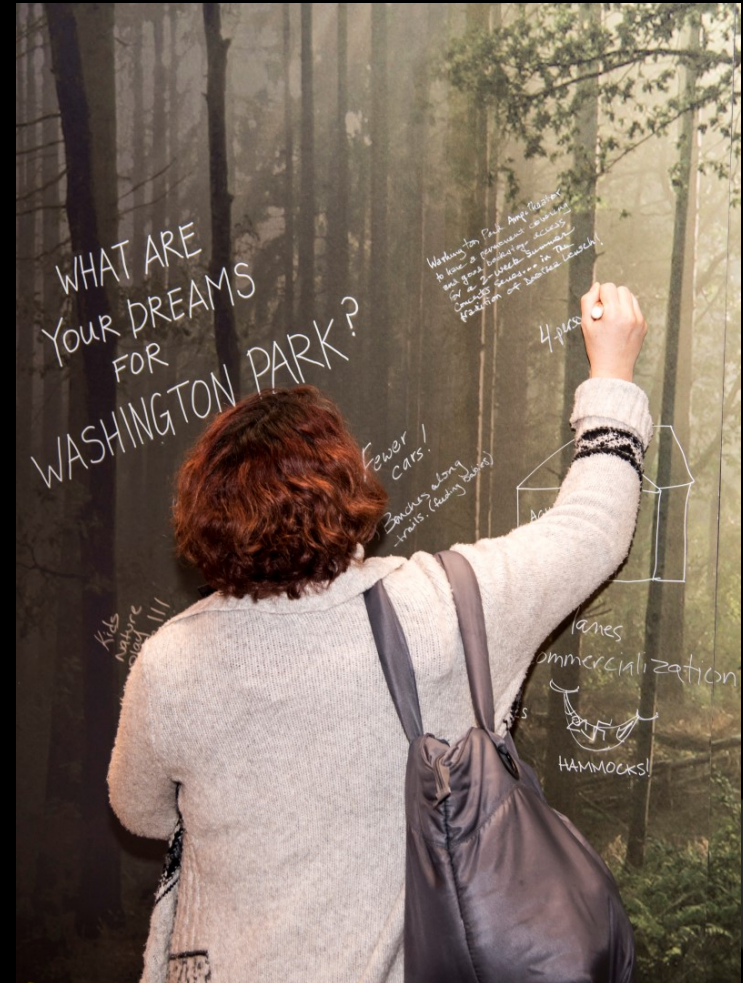
Public Outreach/What We Heard

We Listened

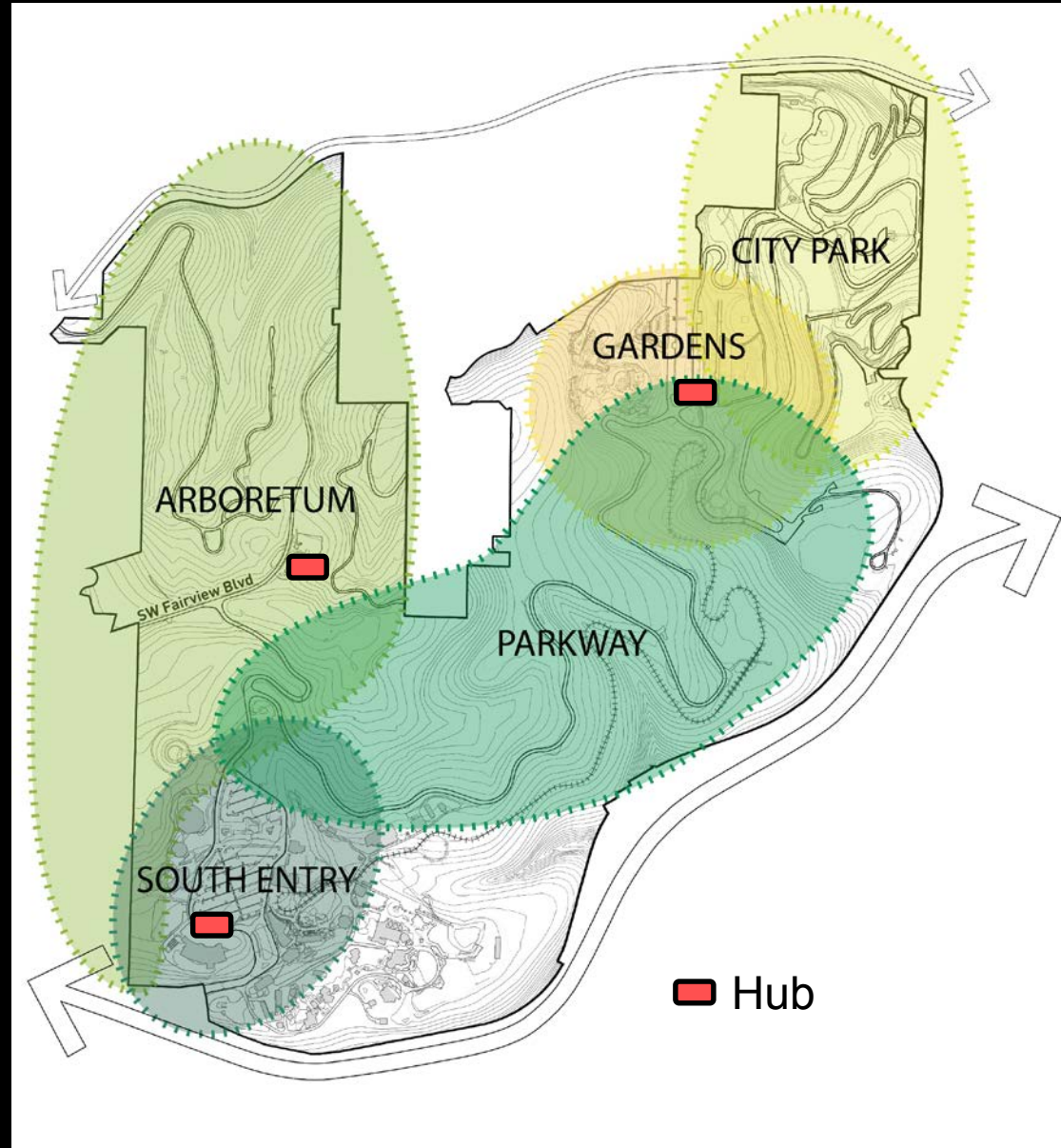
- Over 2500 comments and response
- Champion Committee

We Heard

- Maintain what we have
- Reduce the dominance of cars in the park
- Create a regional trail separated from the road
- Restore natural areas
- Add a winter garden
- Build a canopy walk



Master Plan: 7 Goals, 5 Focus Areas & 3 Hubs



Create Identity

W Burnside St. Gateway

37348



Create Identity

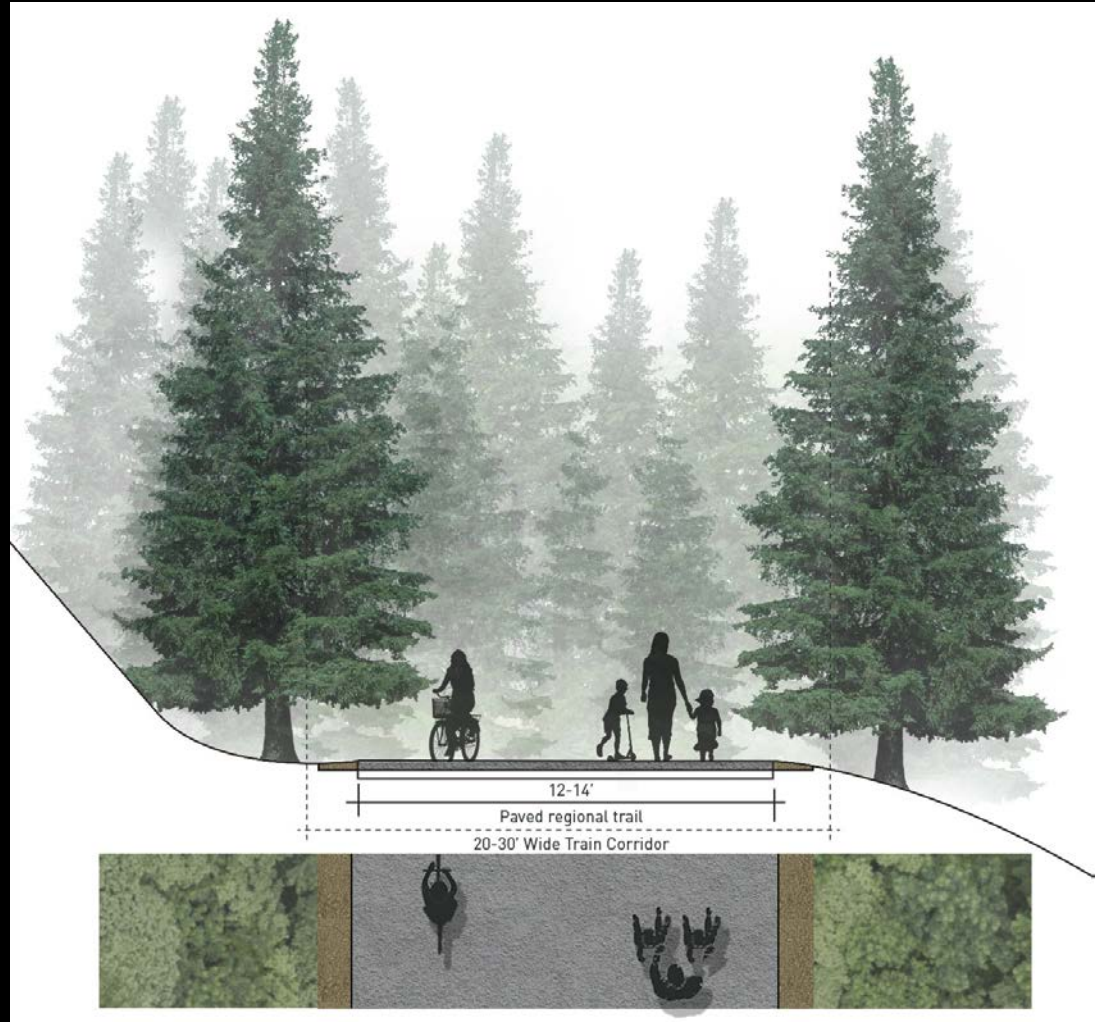
Rose Garden Plaza

37348



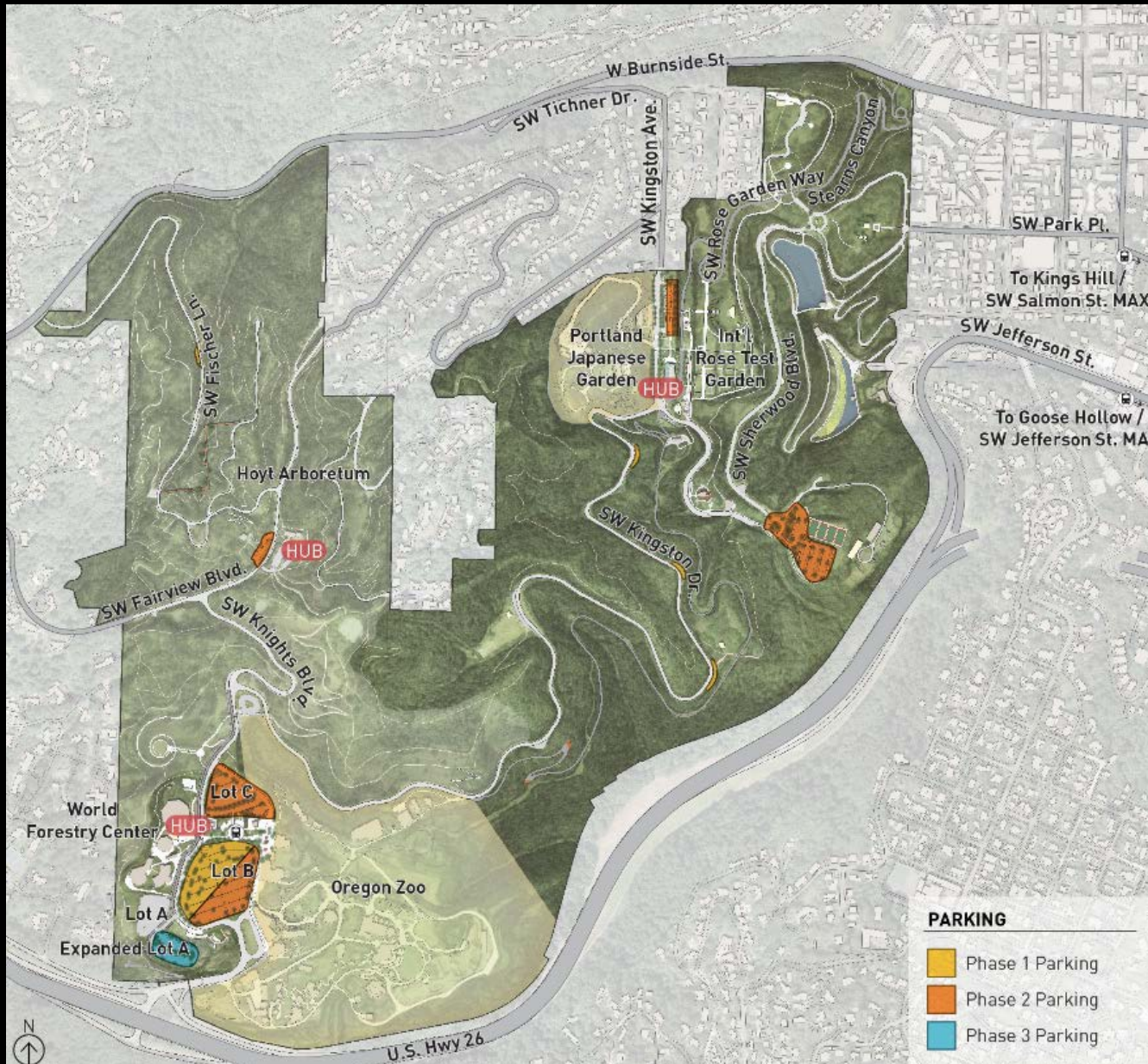
Improve Access Trails

- Regional Trail
- Park Connections
- Trail Realignments and Improvements
- Bike Lanes/Cycle Track
- Accessible Trails
- Connection to the Pedestrian Bridge over Burnside



Improve Access Parking

37348



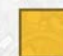


Improve Access

South Entrance Parking



- **Phase 1** – reconfigure Lot B, improving access and drop off
 - **Phase 2** – continue work on Lot B; move ride share drop off, bus parking in Lot C
 - **Phase 3** – Construct a new parking lot
- Total Parking Spaces = 980, net gain of 31 spaces**

PARKING

-  Phase 1 Parking
-  Phase 2 Parking
-  Phase 3 Parking

Improve Access Garden Area Parking



All Improvements are in Phase 2

- Replace 2 of the tennis courts with accessible parking
- Create designated drop off areas
- Construct surface parking off of SW Sherwood

Total Parking Spaces = 368, net loss of 31 spaces

PARKING

- Phase 1 Parking
- Phase 2 Parking
- Phase 3 Parking

Improve Access To and Within the Park

2017 Mode Split

- 63.1% Automobile
- 21.9% Transit
- 7.8% Ride Share
- 7.2 % Active (bike and ped)

Shuttle 138,494 total boarding



Washington Park Free Shuttle



TriMet Bus at Les AuCoin Plaza



Olli Driver-less Minibus

Enhance Visitor Experience

South Entry Garden Plaza



Enhance Visitor Experience

Play and Programming



Enhance Visitor Experience

Nature



Phased Implementation

- **Phase 1 Set the Stage: approx. \$24.5 million**
 - **Phase 2 Solidify the Vision: approx. \$37.5 million**
 - **Phase 3 Enhance the Park: approx. \$32 million**
- Total Cost: \$94 million**



Thank You

PP& R Staff

Brett Horner
Elizabeth Kennedy-Wong
Rachel Felice
Britta Herwig
Seth Menser
Martin Nicholson
Kendra Petersen-Morgan
Victor Sanders
Jill Van Winkle
Mark Ross

Consultant Team

PLACE Studio
JLA Public Involvement
Kittelson & Associates, Inc
Geotechnical Resources
KPFF Resources, Inc
Equilibrium Engineers LLC
The Bookin Group LLC
DCW Cost Management

Champions

Joe Angel
Kimberly Bown
Sam Barasco
Ernest Hayes
Osvaldo Gonzalez
Gretchen Holland
Laurie Matthews
Carol Mayer Reed
Heather McCarey
Octaviano Merecias
Joey Pope
John Russel
Paddy Tillett
Jim Winkler
Charlene Zidell

This master plan update was made possible by funds from the pay-to-park program in Washington Park.

