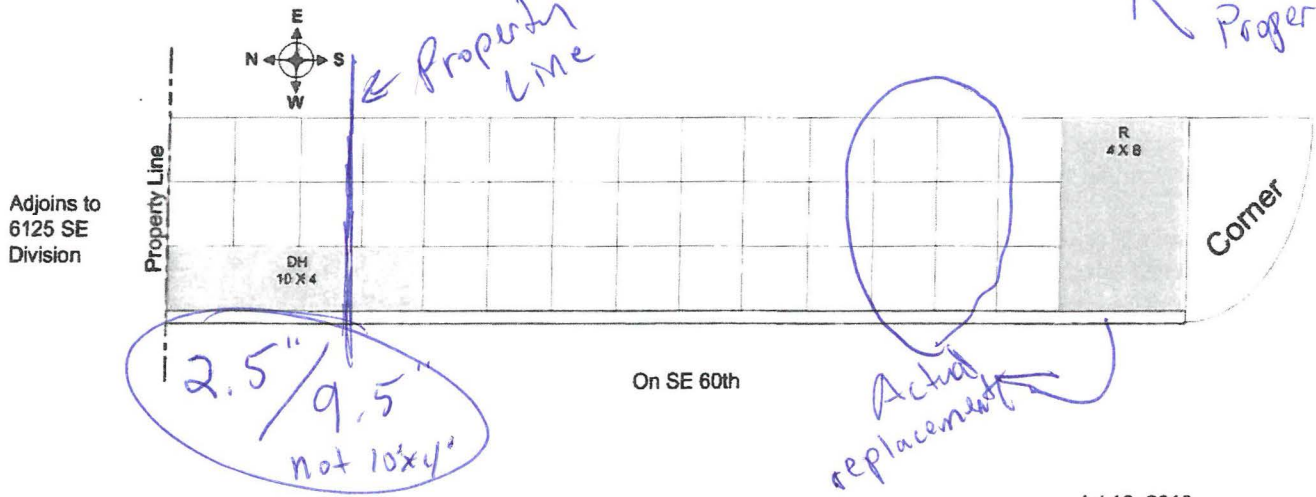
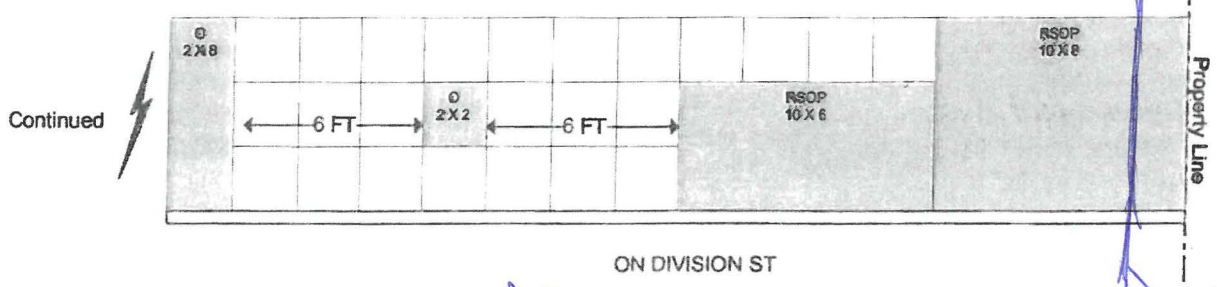
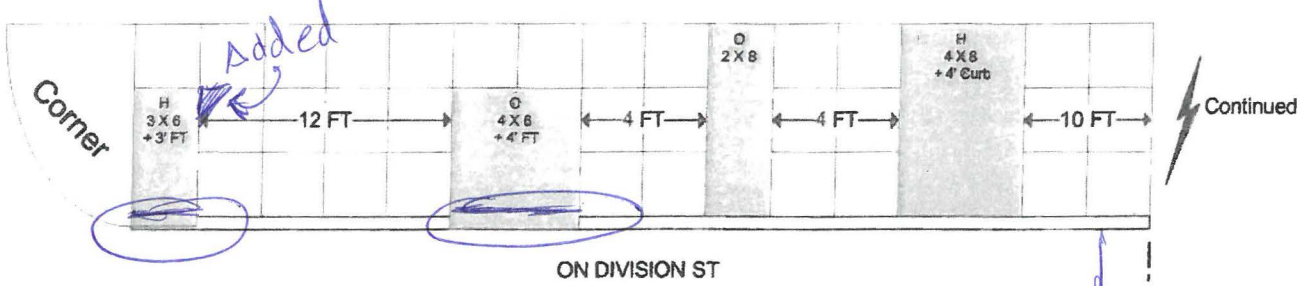


Kyle Bell
2/28/2018

R649703740
2370 SE 60TH AVE
Affidavit # 79351

188851



D93680.VSD

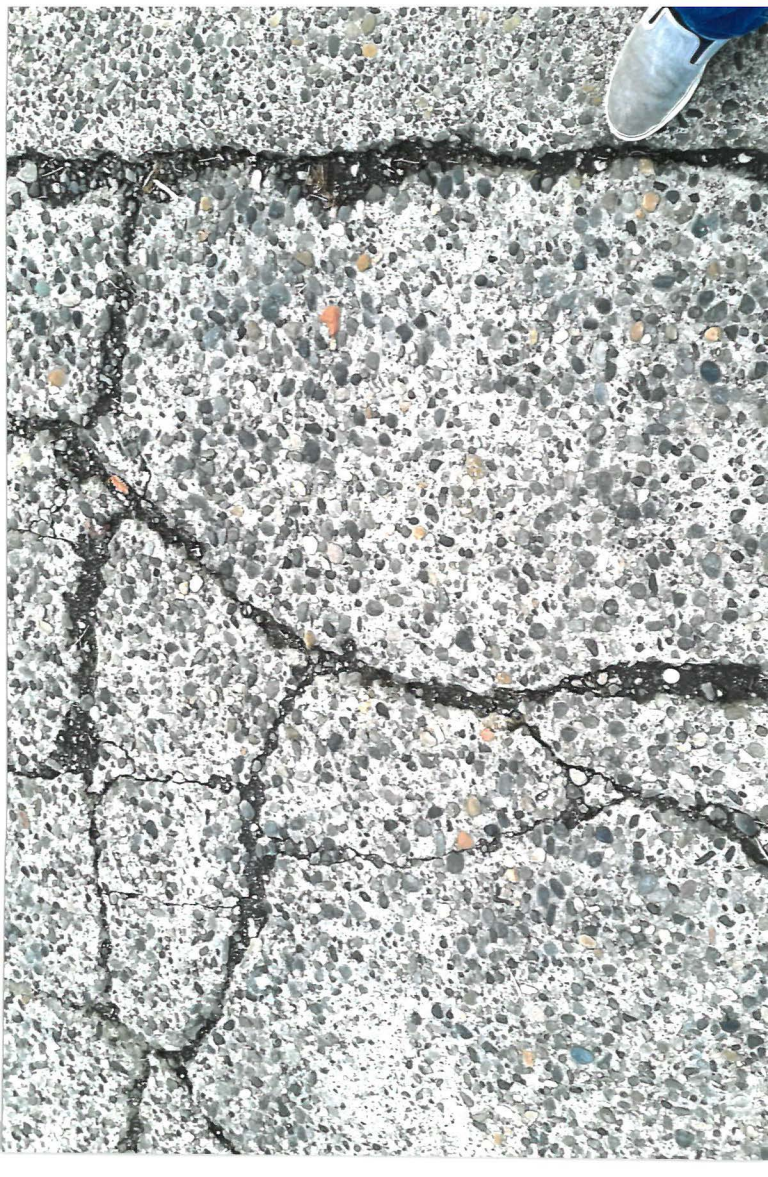
Jul 18, 2016

TREE INSPECTION REQUIRED!
Contact the Forestry Division of the Park Bureau at 603-823-TREE (8733). Once the concrete has been removed and the roots exposed, a tree inspection **MUST** be made prior to any root cutting.

MORE SIDEWALK MAY NEED TO BE REPLACED UPON ROOT INSPECTION

Legend

- O - Opening
- R - Raised
- S - Sunken
- D - Tree Damage
- H - Trip Hazard
- P - Spalling
- T - Other
- DW - Driveway





643
BUREAU OF
MT. TABOR





