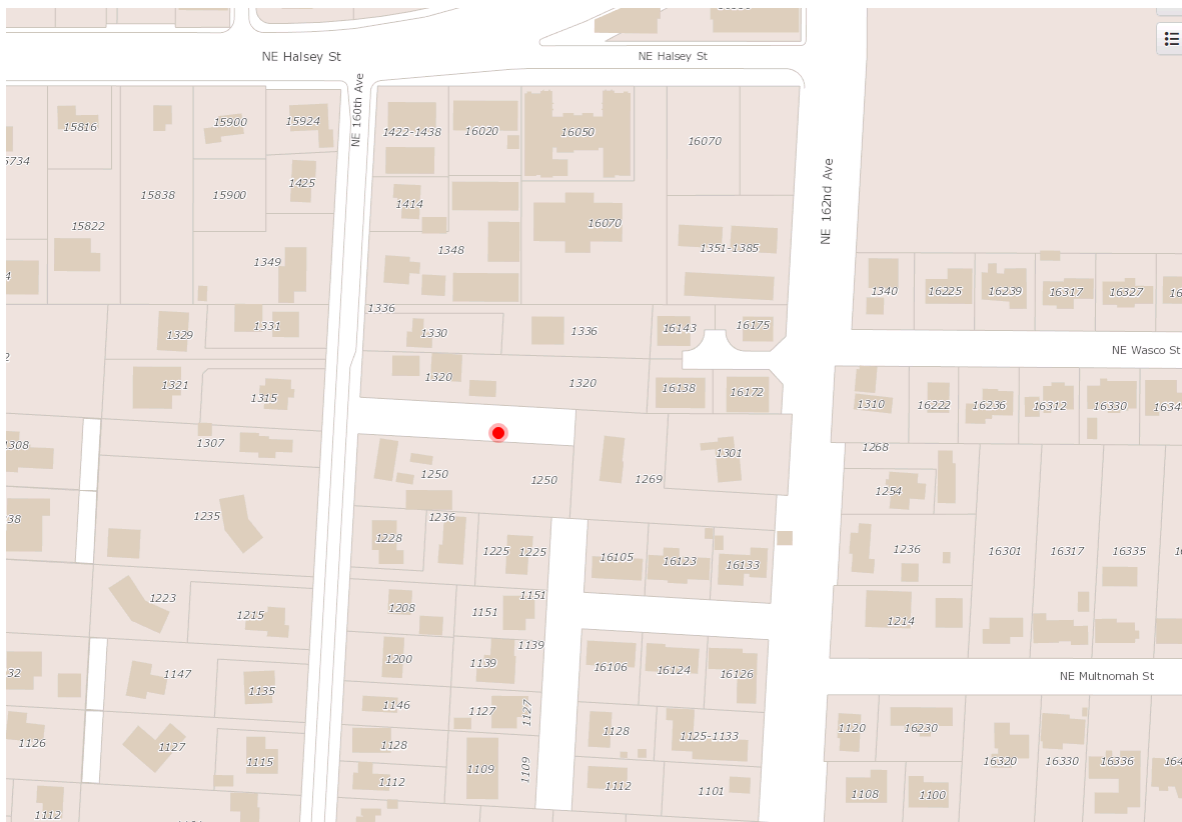




**STREET VACATION PROPOSAL:  
*UNNAMED ROAD EAST OF NE 160<sup>TH</sup>  
AVENUE SOUTH OF NE HALSEY ST.***

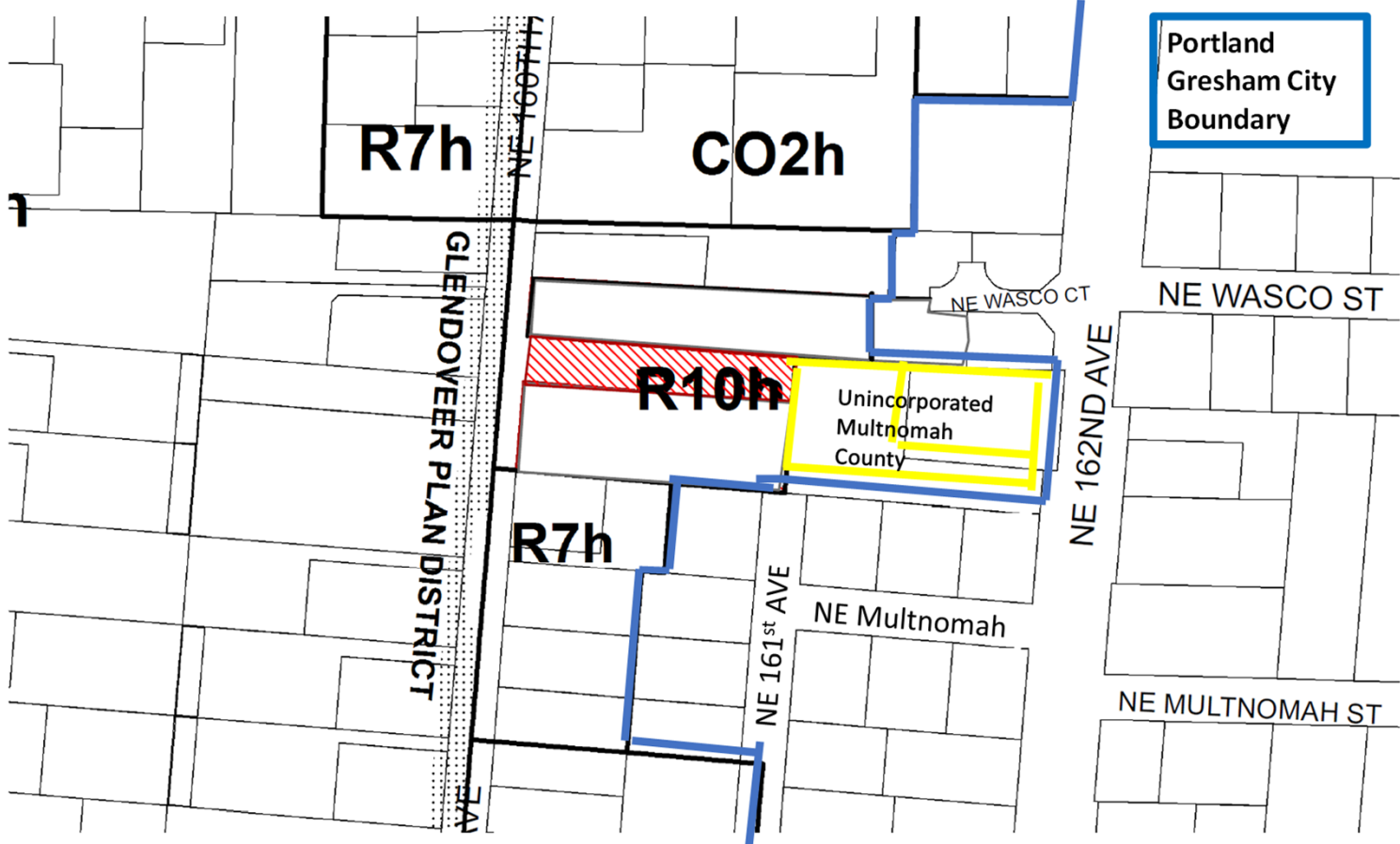
UNNAMED ROAD:  
VIEW FROM NE 160<sup>TH</sup> AVENUE  
(LOOKING EAST)





AS SHOWN ON  
PORTLANDMAPS

# PORTLAND CITY BOUNDARY





VIEW FROM  
NE 160<sup>TH</sup>  
AVENUE  
(LOOKING EAST)





LOOKING EAST





SOUTH TOWARDS NE  
161<sup>ST</sup> AVE.





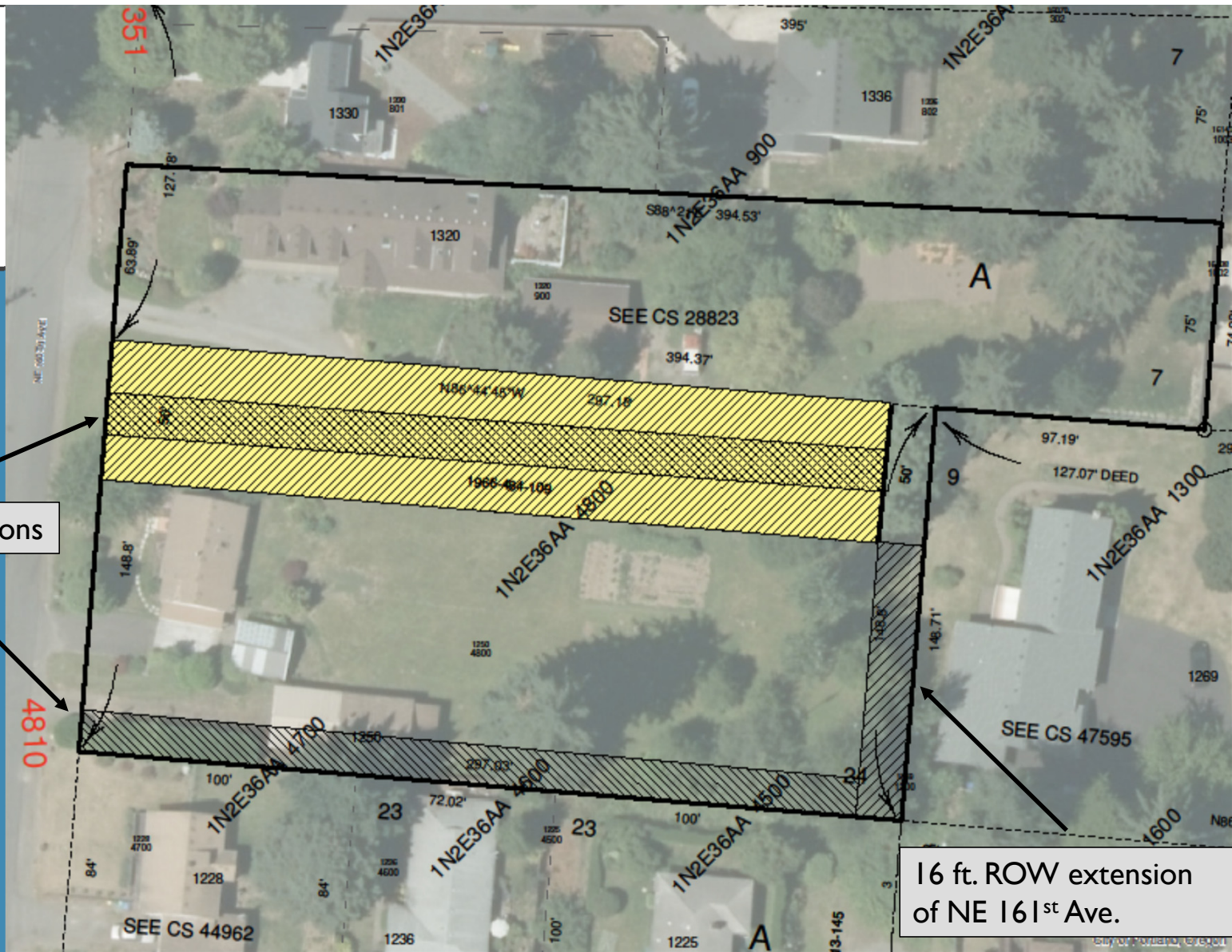
# ADDITIONAL VIEWS



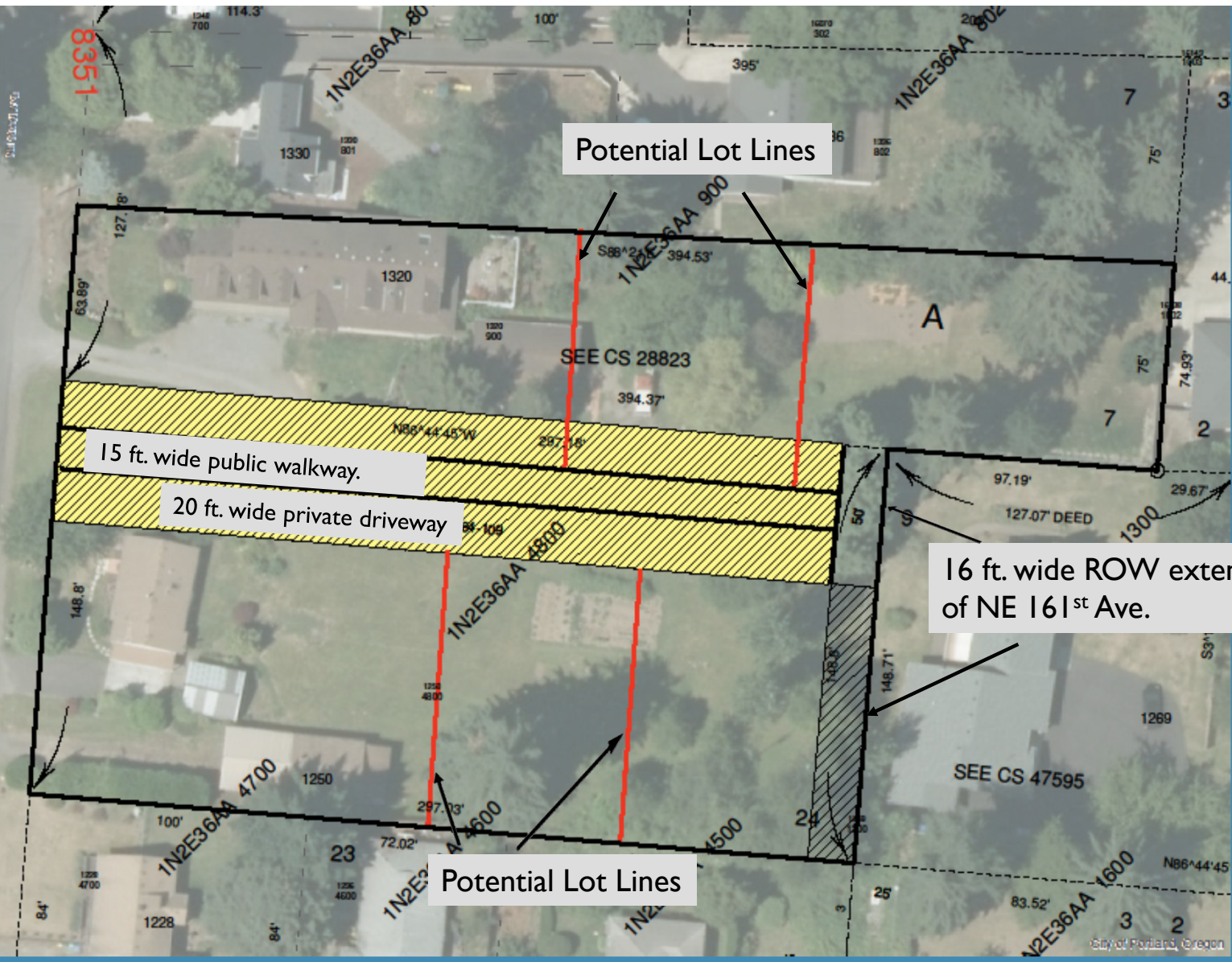


# PROPOSED VACATION AREA

Walkway Easement options



16 ft. ROW extension of NE 161<sup>st</sup> Ave.



Possible  
Subdivision  
Scenario  
(preferred by Petitioners)



