



PORTLAND PARKS & RECREATION

Healthy Parks, Healthy Portland



Leach Garden Upper Garden Project

Ross Swanson, Capital Project Manager III

David Porter, Executive Director Leach Garden



September 2015



PREPARED FOR:

 **PORTLAND PARKS & RECREATION**
Healthy Parks. Healthy Portland

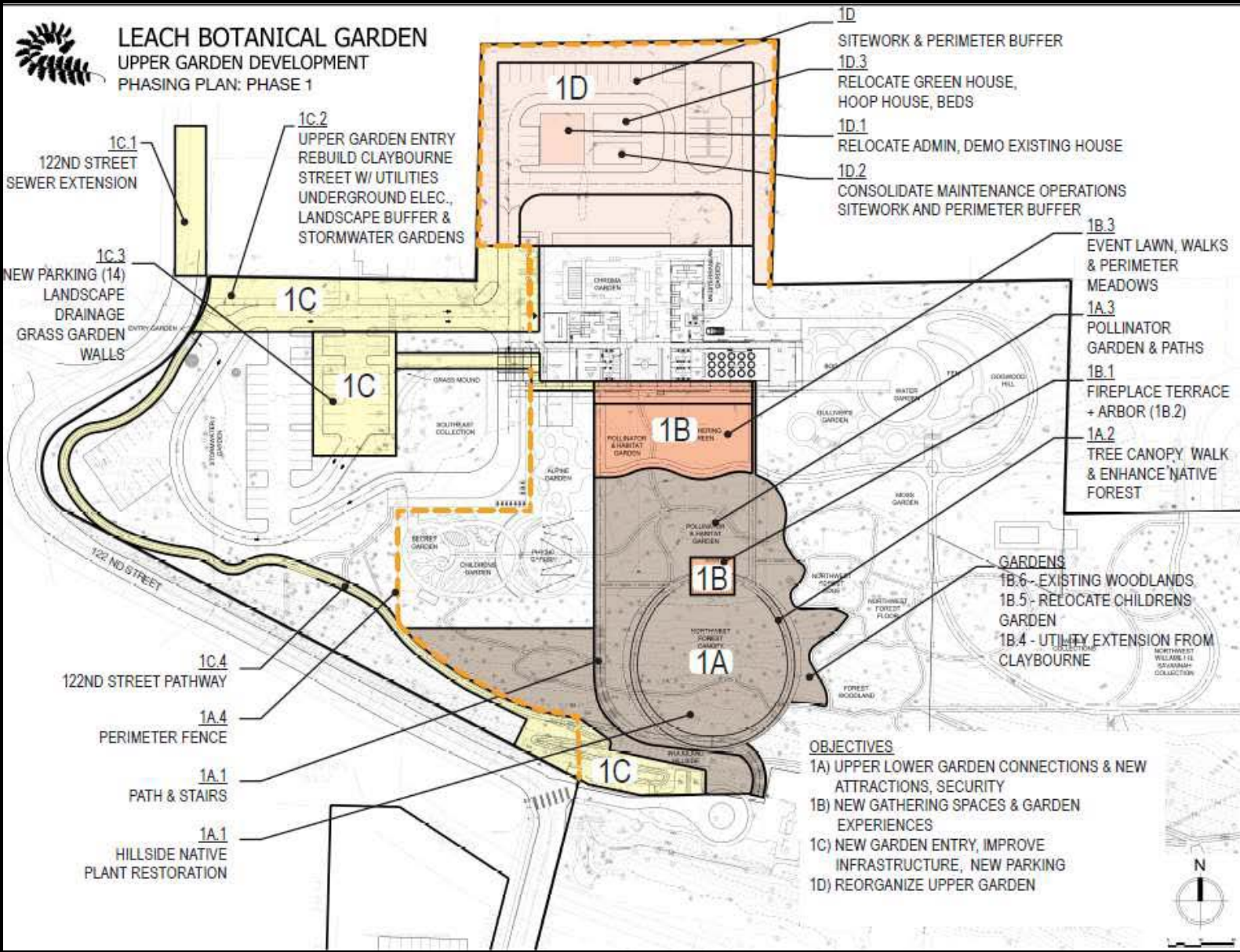


PDC

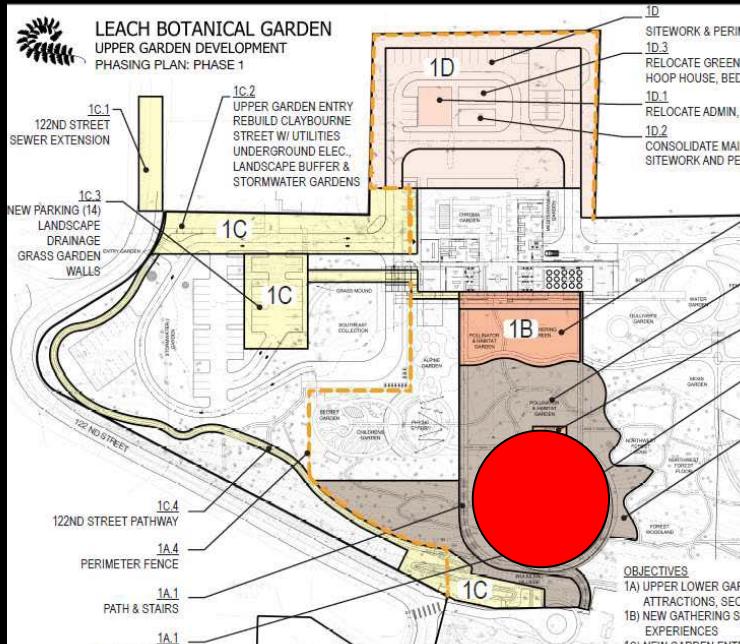
PORTLAND
DEVELOPMENT
COMMISSION
www.pdc.us



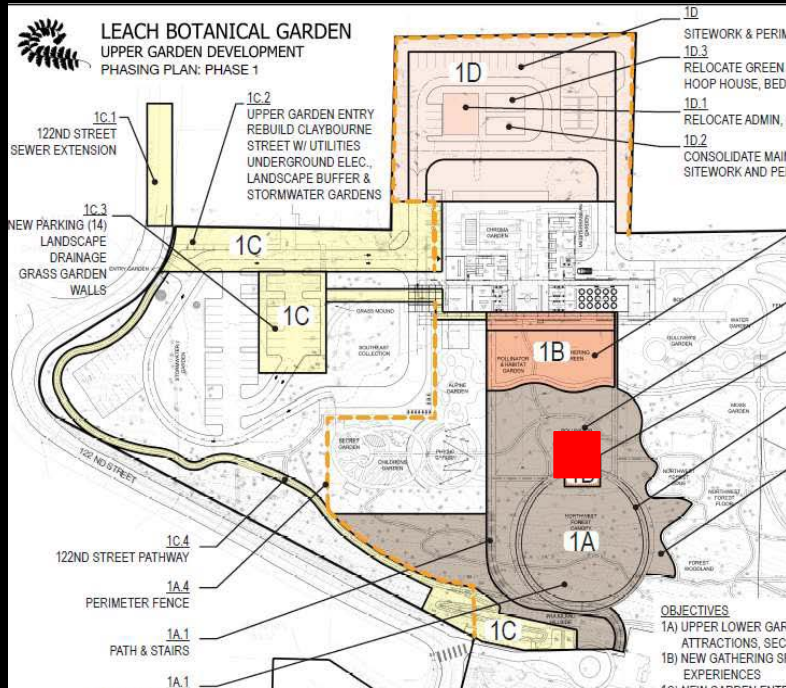
Background: Phase One Project



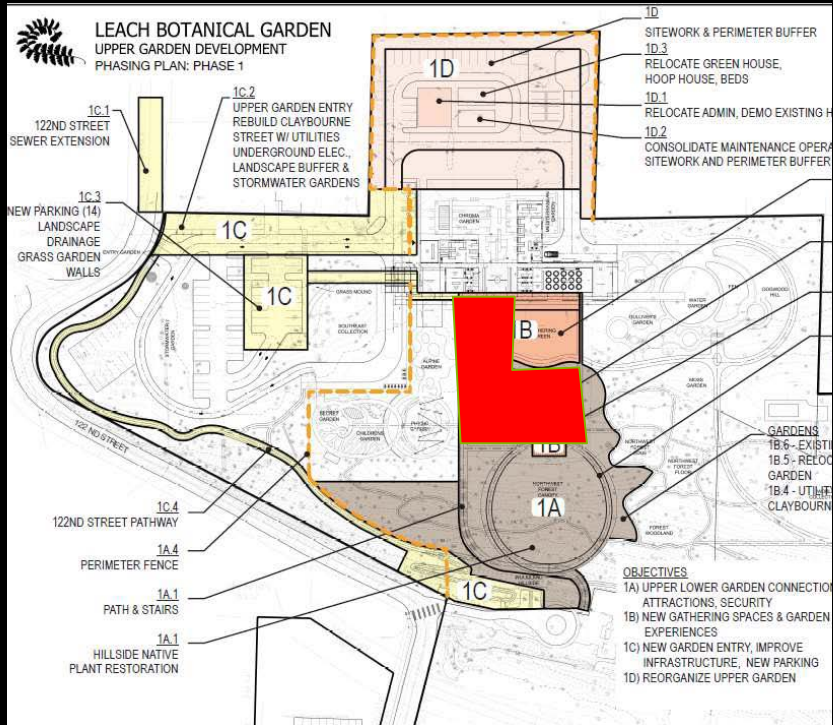
Aerial Tree Walk



Fireplace Terrace / Arbor



Pollinator Garden



Leach Garden Capital Campaign Results!

- 2014 = \$2.15M Original Project Revenue
- 2016 Commissioner Fritz's Challenge:

1) LGF raises	\$1.26M
<u>2) PP&R commits</u>	<u>\$4.9M (PP&R SDC)</u>
Sub-Total	\$6.16M

Leach Garden Capital Campaign Results!

- Other Agency contributions: METRO, \$188K; Prosper Portland (Lents URA), \$1.8M

2018 NEW PROJECT REVENUE

363% INCREASE: to \$9.9M total

Why Are We Here Today?



*Amend PTE contract with Land Morphology, Inc. in the amount of \$674,137 to provide additional design and construction administration services for the Leach Upper Garden Development Project.



PORTLAND PARKS & RECREATION

Healthy Parks, Healthy Portland

