



PORTLAND **ART** MUSEUM

CONNECTIONS CAMPAIGN











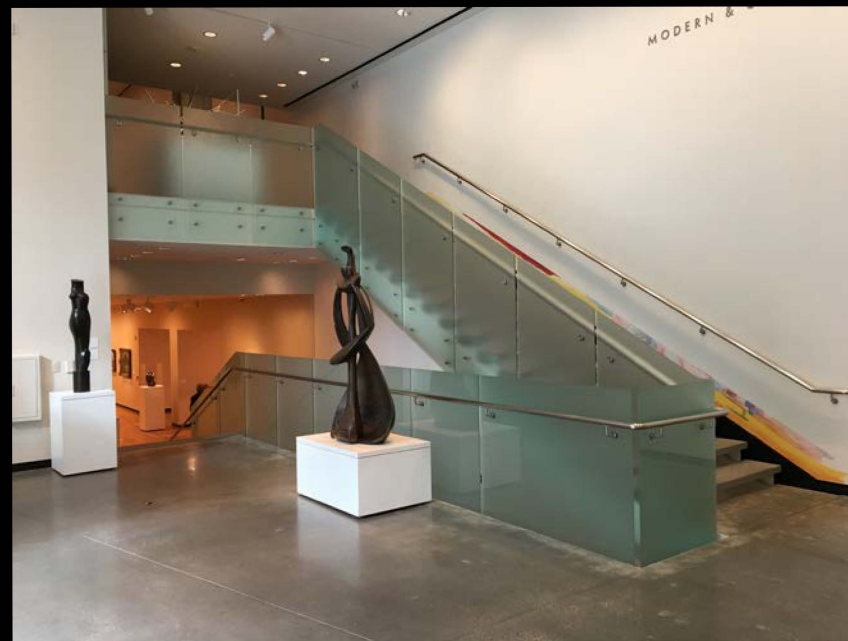
Next Step in Accessibility:

- We have been working to find a solution to the physical **accessibility issues within the Museum.**
- We are seeking approval to proceed with a solution that will **make access to and throughout the Museum better for everyone of all ages and abilities, including those with disabilities.**

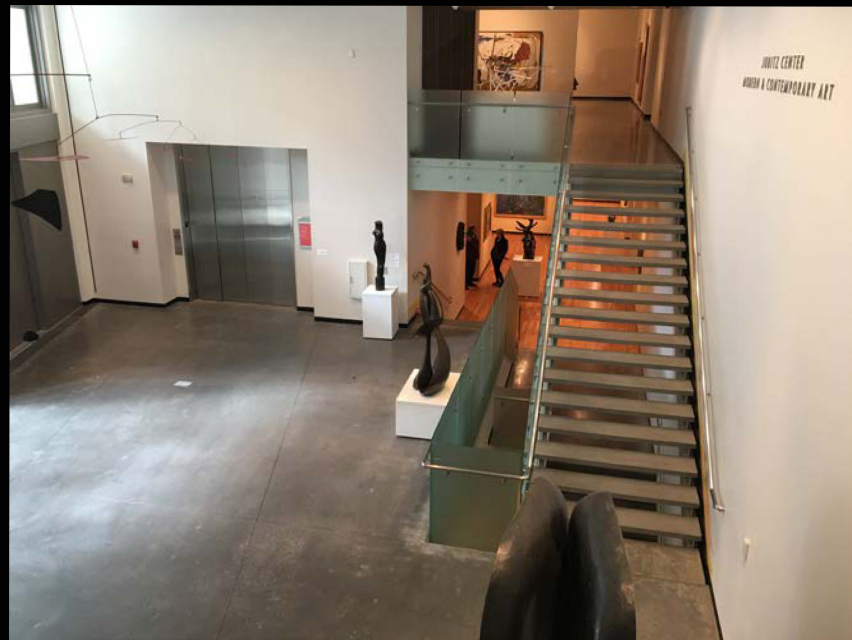
Madison Street Ordinance

- **In 1968, SW Madison Street between SW Park and SW 10th Avenue was vacated.**
 - 8-foot-wide pedestrian easement to be illuminated
 - area to be used as an open mall
 - ownership transferred to adjacent properties
- **In 1984, ordinance was amended to allow the Museum to close off the area between 11:00 p.m. and 7:00 a.m.**









Accessibility: *Existing Problems*

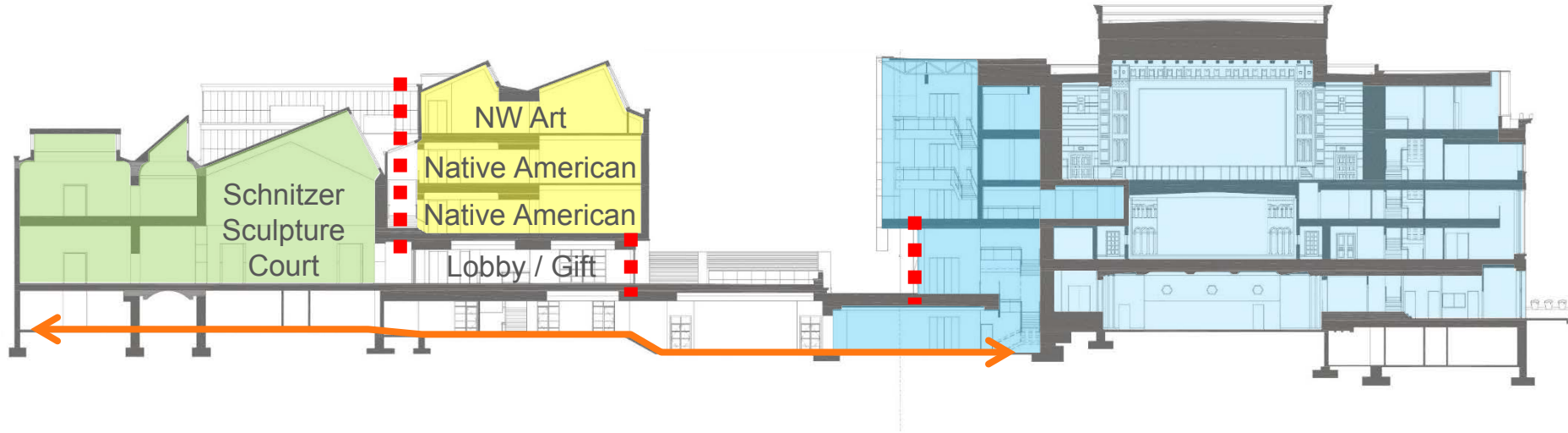
MAIN

MARK

Belluschi's Original
Galleries

The School

Jubitz



■ ■ ■ ■ ■ Existing barriers to
horizontal circulation

Goal: *Improved accessibility across the campus*

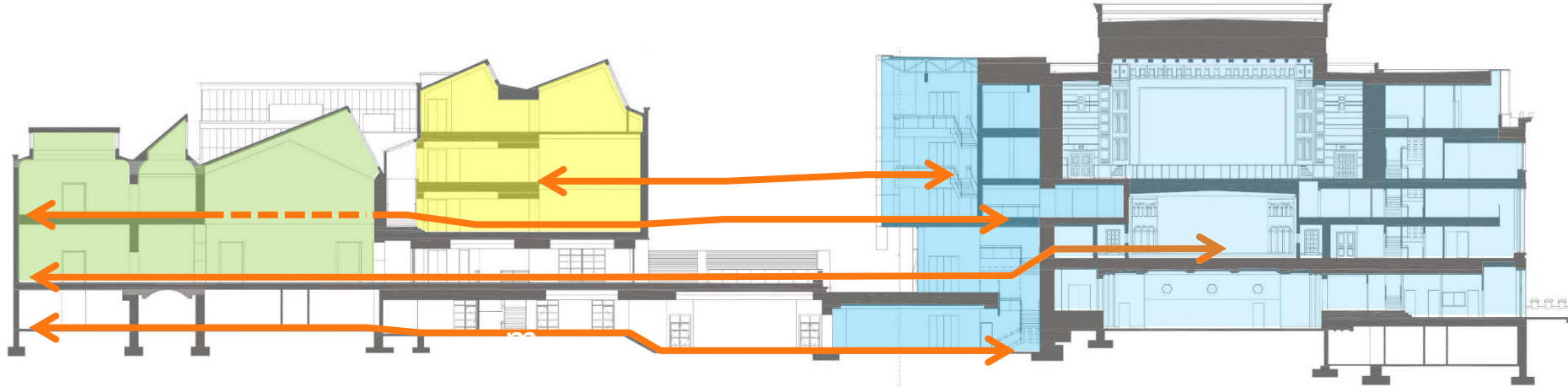
MAIN

MARK

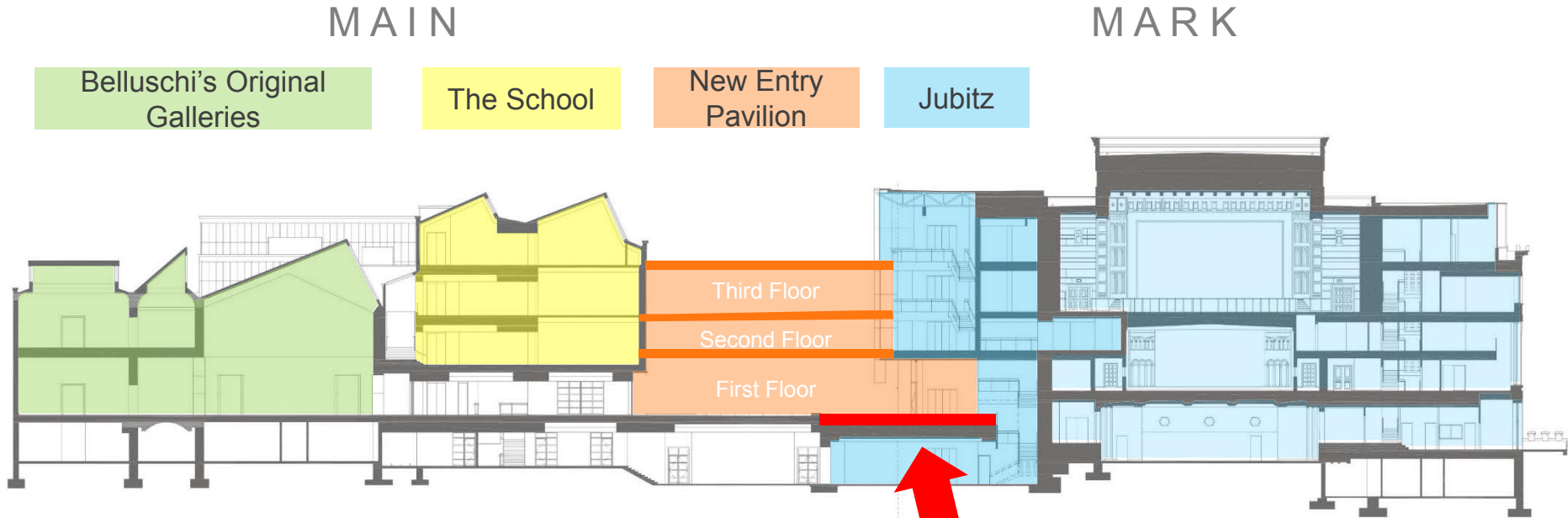
Belluschi's Original
Galleries

The School

Jubitz

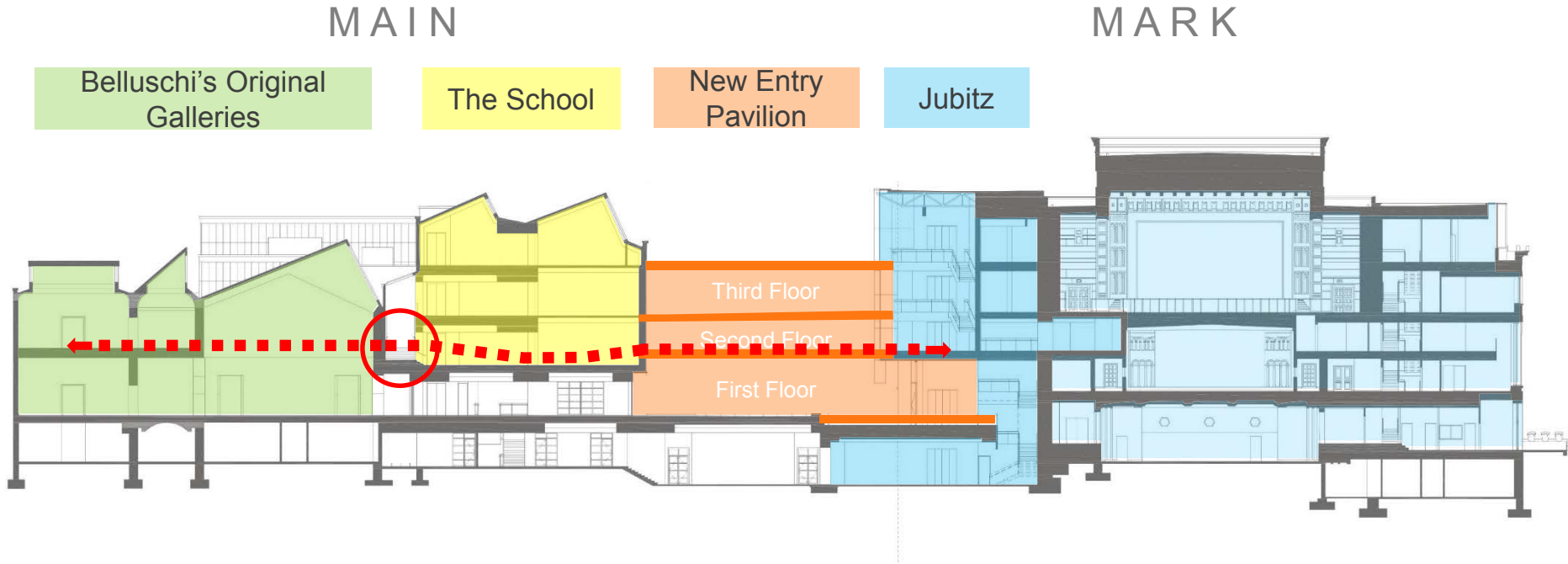


Solution: *Raise the first floor level of Jubitz*



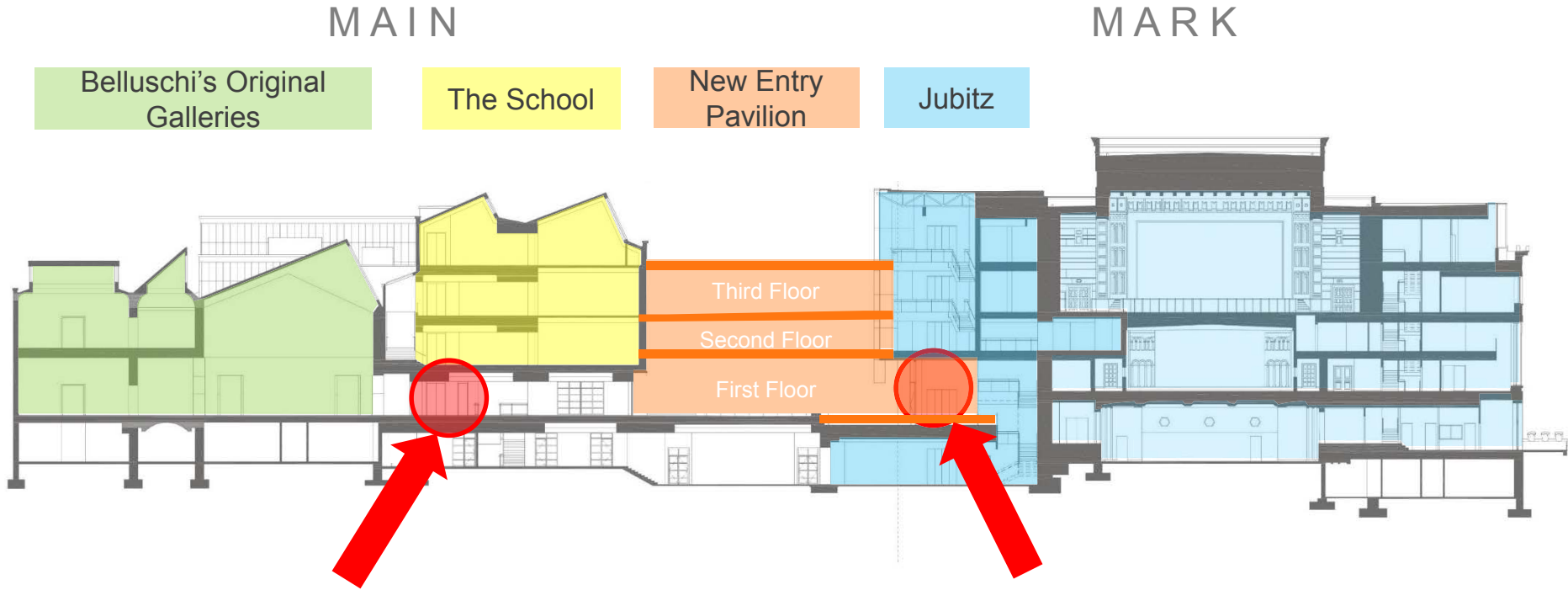
New pavilion lobby unites Main and Jubitz on one level
No level changes across the first floor galleries

Solution: *Improve the flow across the 2nd floor*



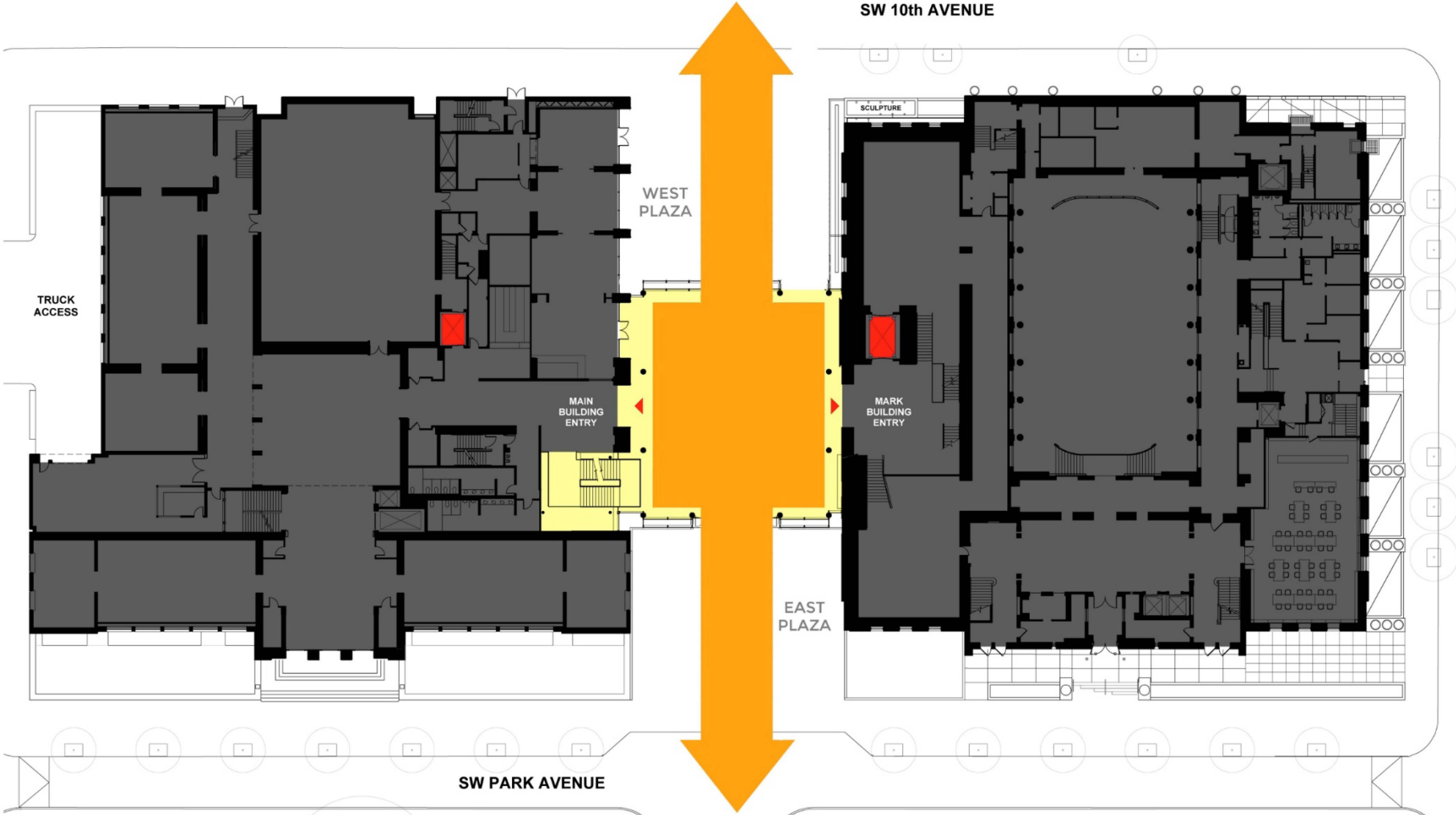
A new accessible connection links all 2nd floor galleries, improving wayfinding and visitor experience

Solution: *Provide visible and usable vertical access.*



Two easily identifiable and accessible elevators from the entry pavilion that connect all floors.

SW 10th AVENUE



WEST PLAZA

MAIN BUILDING ENTRY

TRUCK ACCESS

MARK BUILDING ENTRY

SCULPTURE

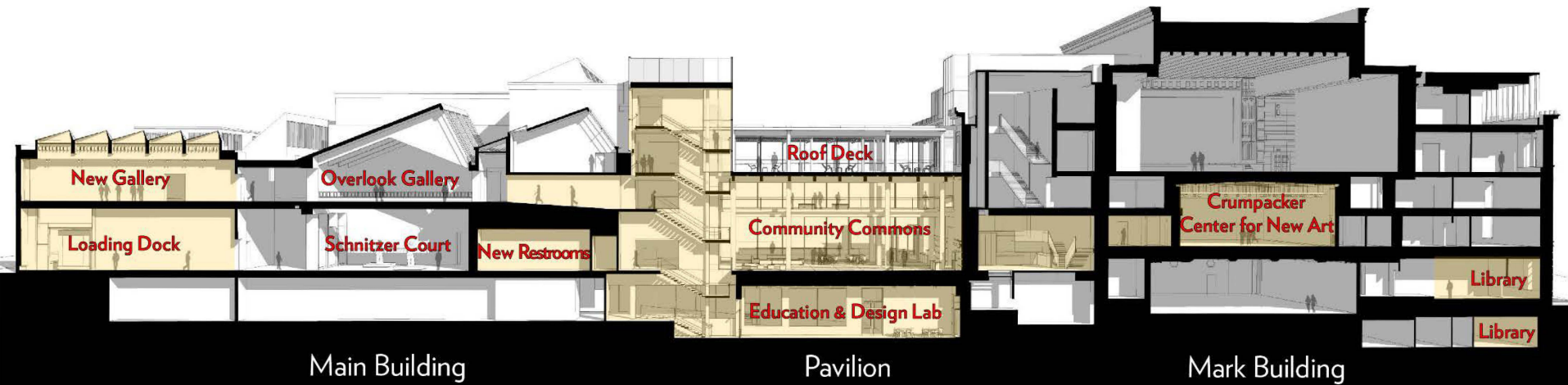
EAST PLAZA

SW PARK AVENUE



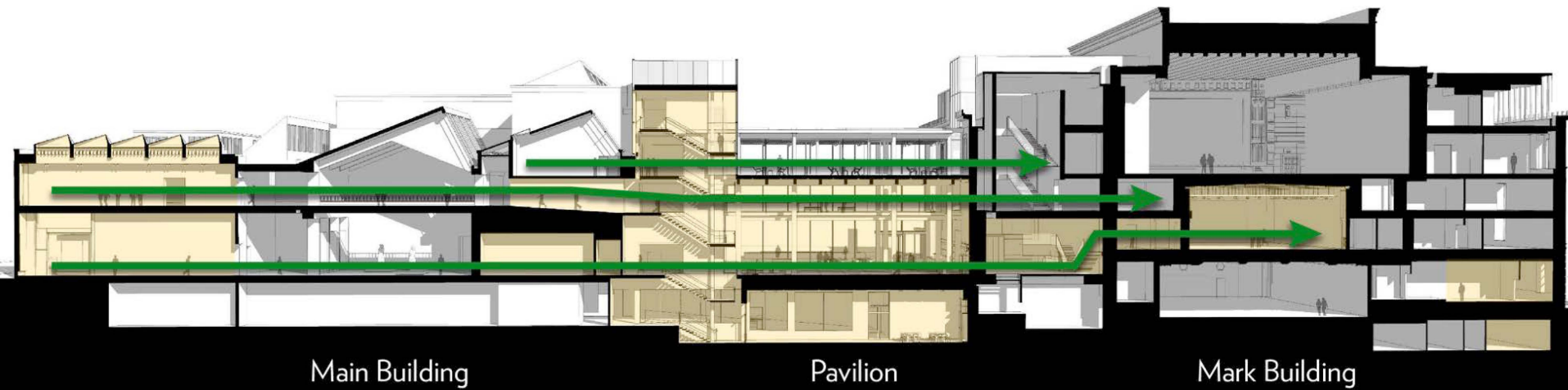






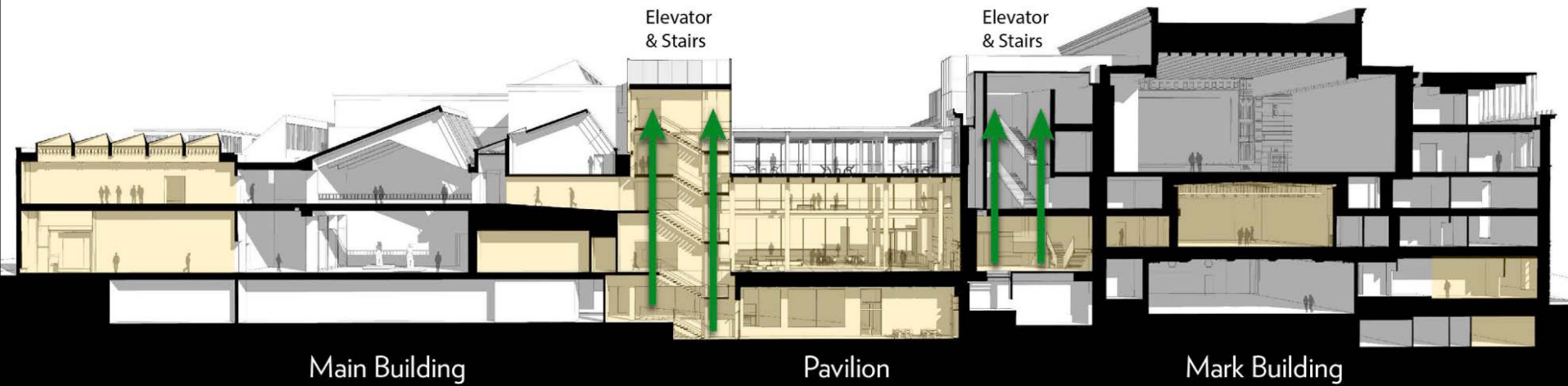
Section: Main Building, Pavilion & Mark Building





Section: Main Building, Pavilion & Mark Building



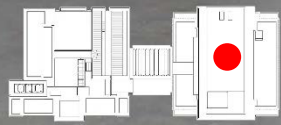


Section: Main Building, Pavilion & Mark Building





Crumpacker Center for New Art



Since our last City Hall presentation

- We are **listening** and propose that the pavilion remain open from
7 a.m. – 11 p.m.
- We would **add security and lighting** to enhance the safety of the interior and exterior spaces.
- We would **allow pets and bikes.**
- We are working with **accessibility and inclusive design advisors** to make this one of the most accessible institutions



PORTLAND **ART** MUSEUM

Thank you!