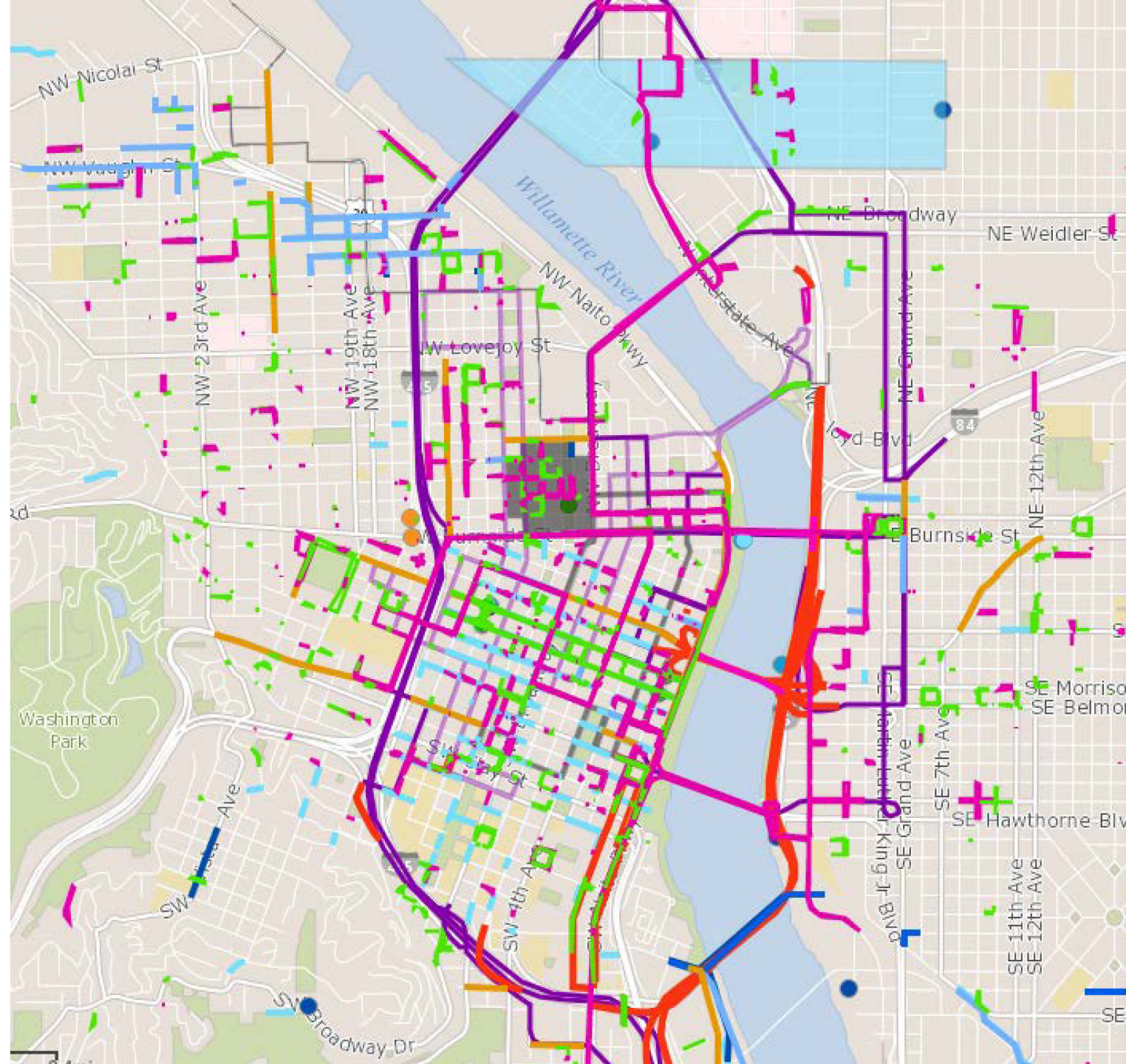


WORKING TOGETHER TO







WORKING
TOGETHER TO

GET PORTLAND

MOVING



Pioneer Courthouse Square Maintenance



Westside MAX Improvements

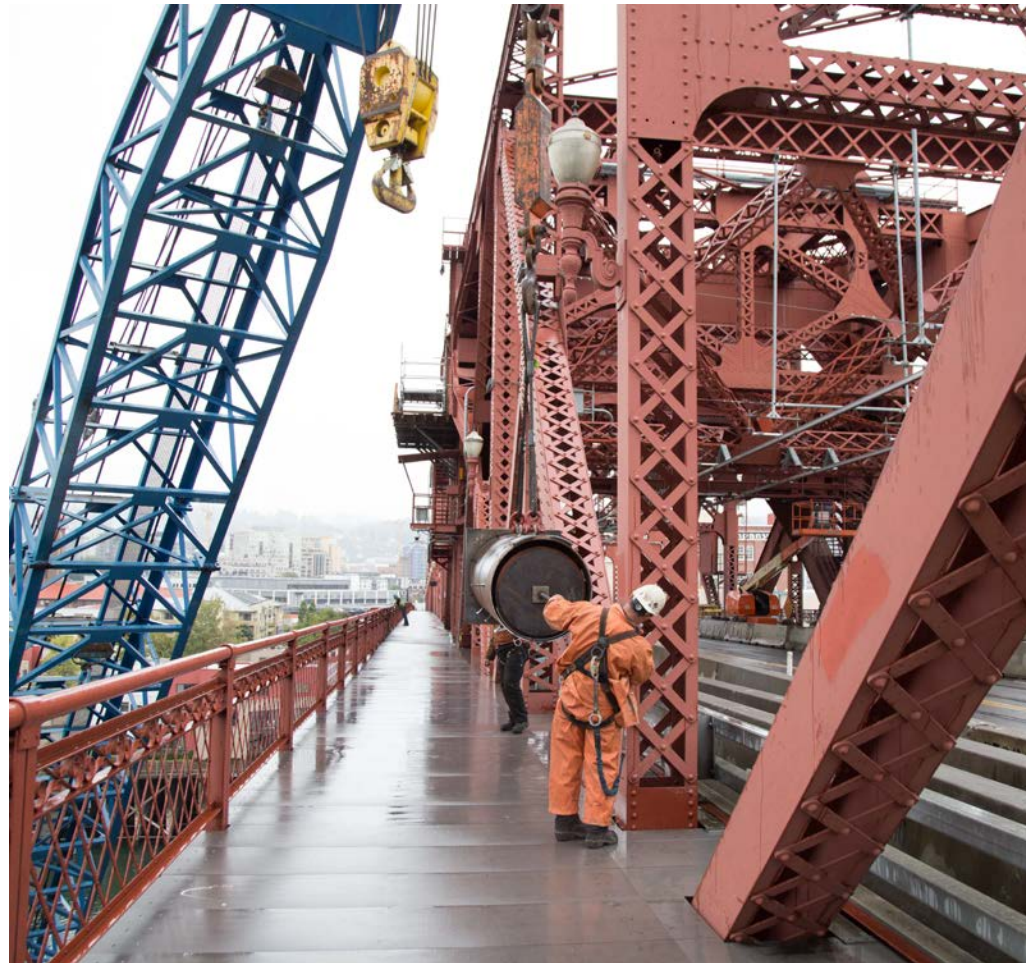


BES Pipe Maintenance



Multnomah County Bridge Maintenance

Broadway Bridge



Burnside Bridge



Morrison Bridge



Multnomah County Courthouse



SW Main: 1st - 2nd Street Capital Paving

Before



After



Successes in Coordination



- Address capital and maintenance needs
- Cost avoidance
- Minimize mobility impacts
- Enhanced communication with the public
- Consistency in permitting

Portland fines two construction firms for blocking traffic

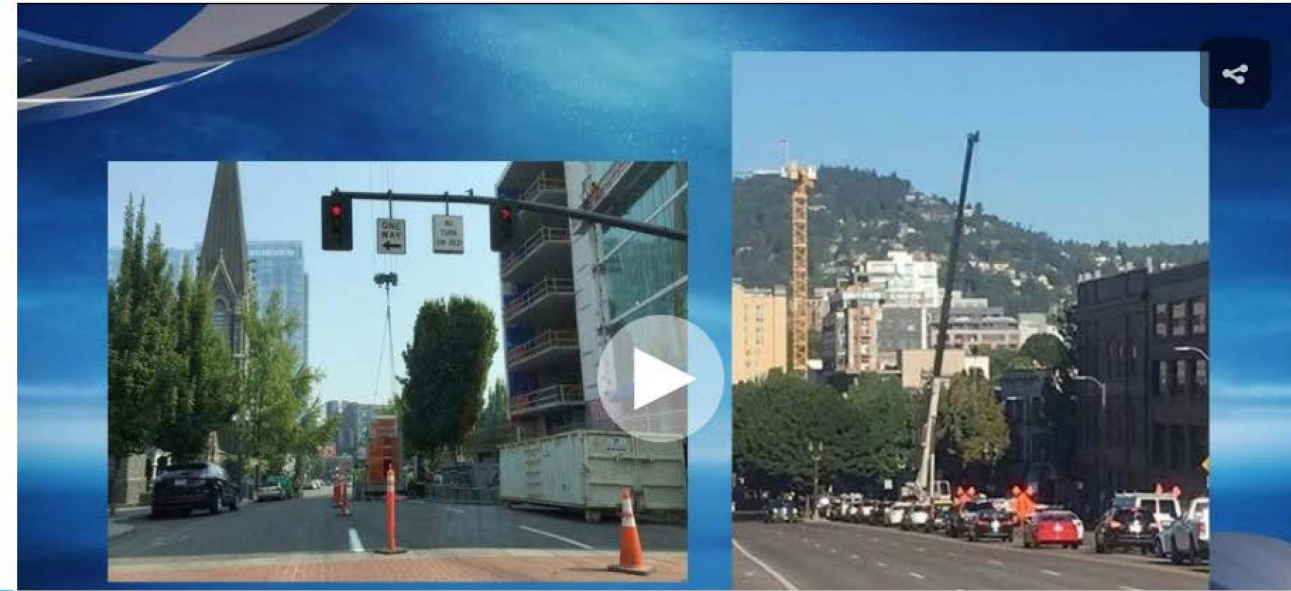
Updated Aug 7, 2017; Posted Aug 7, 2017



The Portland Bureau of Transportation said Turner Construction Co. violated its permit by closing two lanes of Southwest 12th Avenue. Its permit only allowed the closure of one lane. (Portland Water Bureau)

PBOT fines two contractors who blocked right of way on Burnside Bridge and downtown

by KATU Staff | Monday, August 7th 2017



Moving Forward with Get Portland Moving



Expand citywide

Recommitment from partners for continued coordination

Data and technologies as tools, business processes as solutions

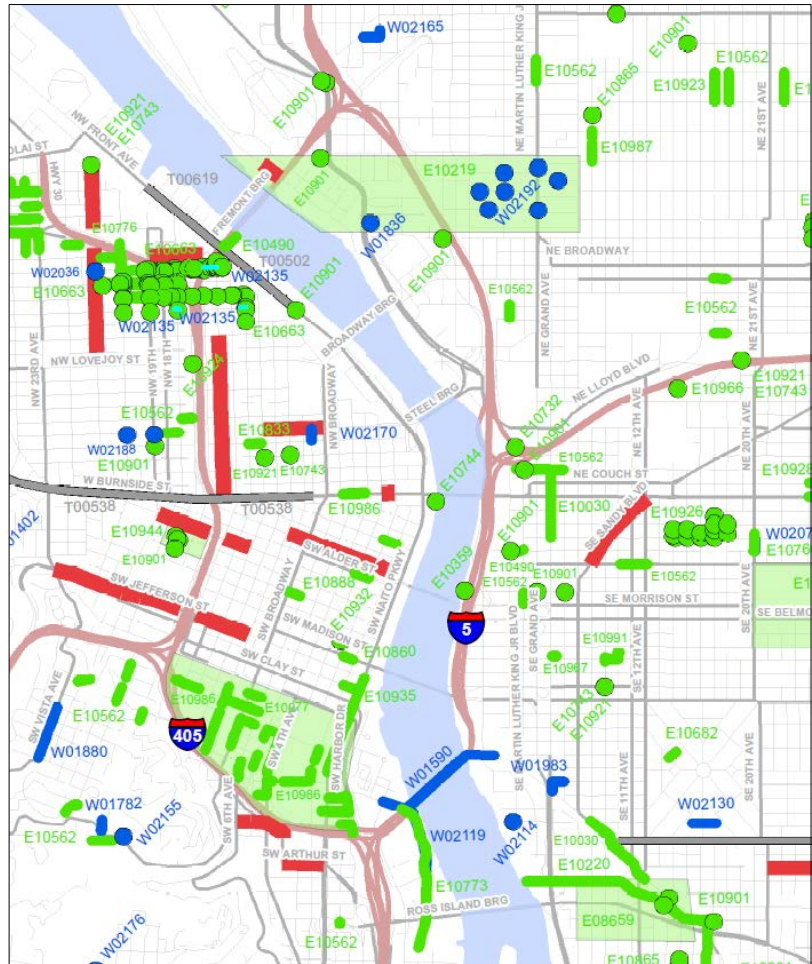
Resource needs for successful expansion

Common operating picture, or web map, with ROW impacts, limits, dates, contact information

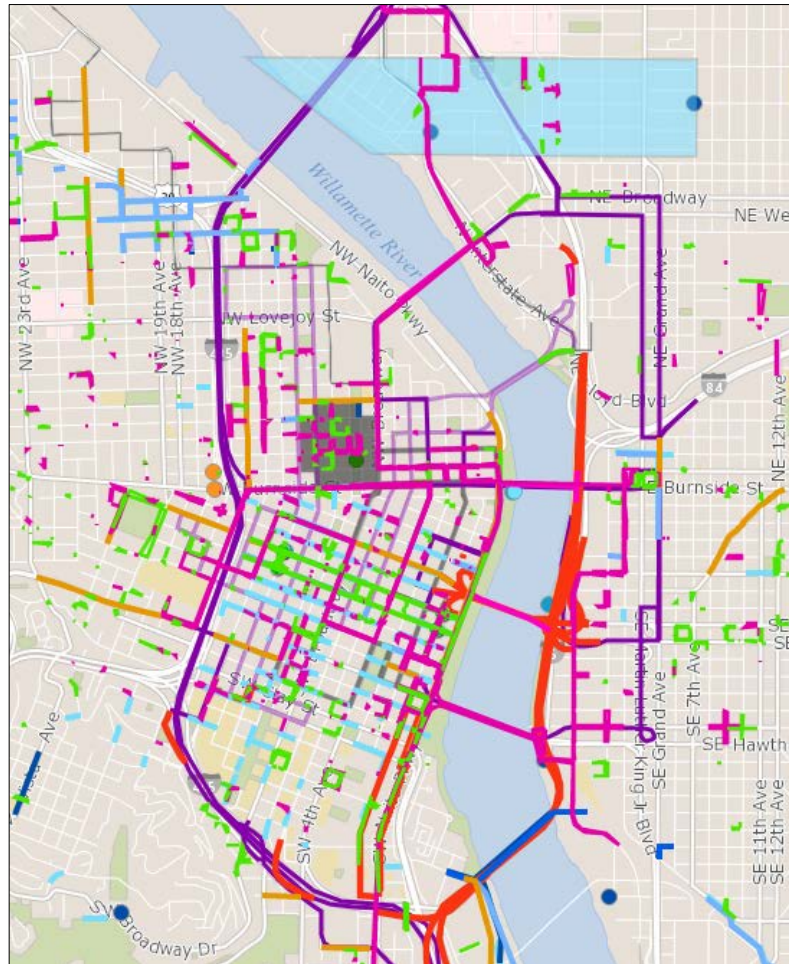
Coordination staff to gather and report data; sustain effort

Moving Forward with Get Portland Moving

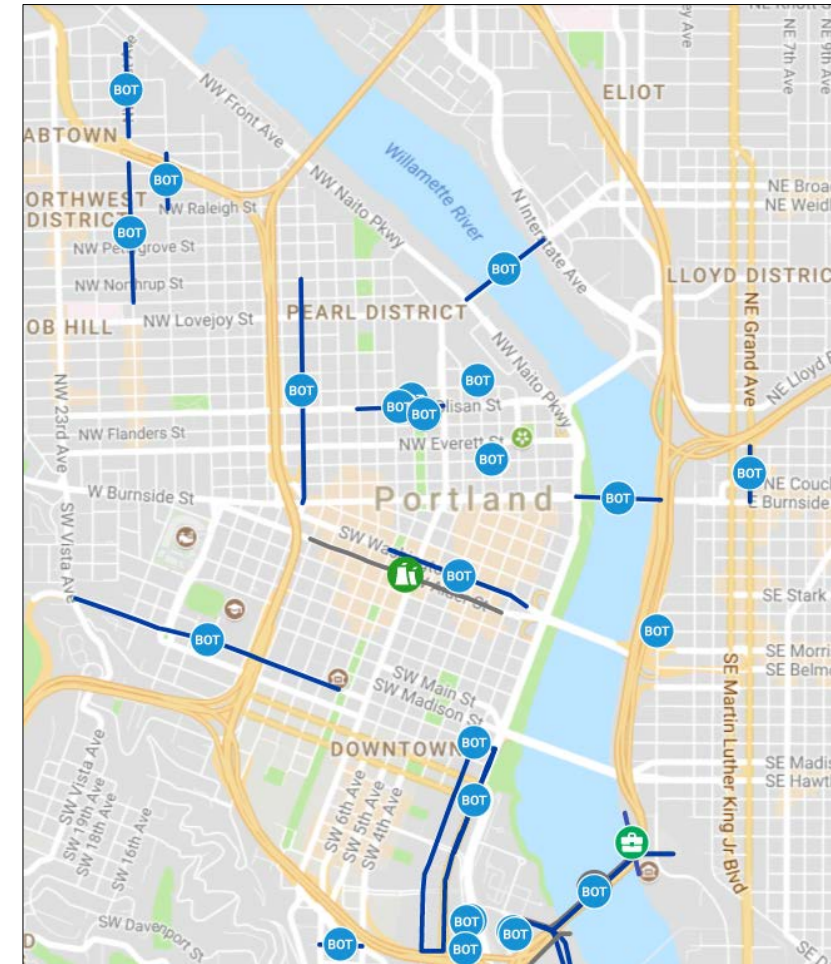
Current Capital Improvement Project Map



Get Portland Moving 1.0



Get Portland Moving 2.0



Seattle Expects to Save Millions of Dollars Through Right-of-Way Management



Seattle, Washington

By [Dave Nyczepir](#) | NOVEMBER 15, 2017

“Our first goals were to protect the pavement as an asset and make sure people and visitors to Seattle were able to travel,” said the city’s Project and Construction Coordination Office manager.

Route 50 (11/15/17)

Seattle DOT Saves \$500,000 With Road Work Planning App



Seattle.gov

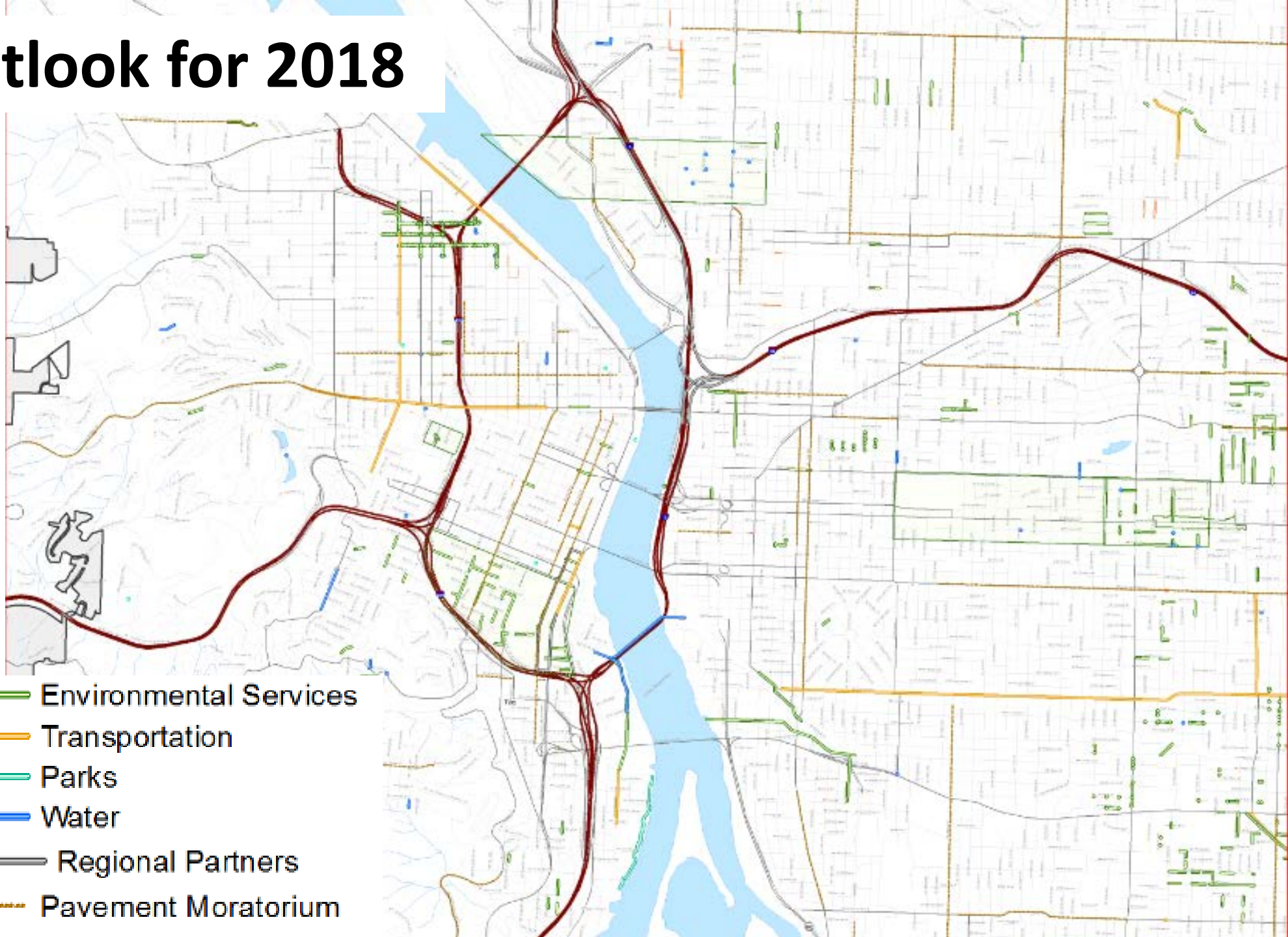
Transport Topics (11/13/17)

How The Seattle Department Of Transportation Expects To Save \$7 Million Within A Year Using dotMaps



Forbes (12/11/2017)

Outlook for 2018



WORKING TOGETHER TO

PBOT
PORTLAND BUREAU OF TRANSPORTATION



ENVIRONMENTAL SERVICES
CITY OF PORTLAND



PORTLAND PARKS & RECREATION™
Healthy Parks, Healthy Portland

TRI  MET



PARKING LOT / BIKE PARKING SLIDES

Primary Benefits to Right-of-Way Coordination

- 1) Process improvements: identify and address process issues within and among participating agencies
- 2) Information: hearing about the work of others in the ROW helped keep myself and my team informed of activities that may effect our assets or operations
- 3) Scheduling projects: modified schedule to avoid or align with other activities in the right-of-way
- 4) Cost savings: realized dollars saved by avoiding conflicts in the ROW or by piggybacking on another organizations' traffic control plan, closure, trench, or public notification
- 5) Identify primary contacts for project issues (meeting staff from other agencies to help with interagency communication on project coordination)

Challenges to Get Portland Moving



Limited Resources

- GPM needs dedicated personnel to be responsible for information gathering, data entry, and process improvements
- More resources to expedite permit review and approval

Project Scheduling

- Challenge of staying on top of changing schedules for projects near construction; projects impacted by weather, protests, etc.
- Coordination in early stages of project planning

Buy-In

- Commitment from high level of continue to engage in this program

Communication

- Getting information to staff about changing schedules, potential conflicts or opportunities

What's different about Get Portland Moving?

- Renewed focus on coordination within the right-of-way
- Take steps to inform each other earlier in the construction planning process
- We are maximizing our use of the right-of-way by addressing goals of multiple bureaus as part of one closure

How is Get Portland Moving getting Portland moving?

Coordinating Work

Regular meetings with public agency partners to discuss near-term construction activities, and projects in the planning phase

Identify conflicts and opportunities (reschedule work to align efforts, maximize benefits)

Coordination opportunities allow projects to “piggyback” on each other’s traffic controls and public outreach, reduce street openings, and minimize multiple road and transit closures.

Work closely with designated project and construction managers to continue coordination efforts

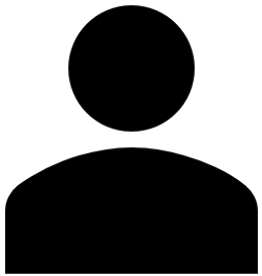
Communicating Impacts

Get Portland Moving website (MovePDX.net), including a dynamic web map depicting street closures in real time.

Partnership with Waze to communicate road closures to Portlanders using an app that many smart phone users already have

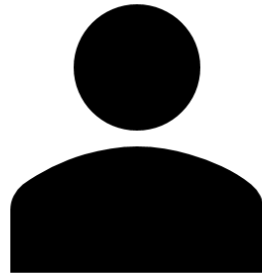
“City staff have been working diligently to coordinate the timing of many different public works projects to ease congestion as much as possible”

– Commissioner Saltzman
(City of Portland)



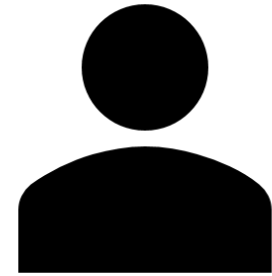
“Through Get Portland Moving we were able to have a say in detour routes and sequencing resulting in less impacts to service reliability”

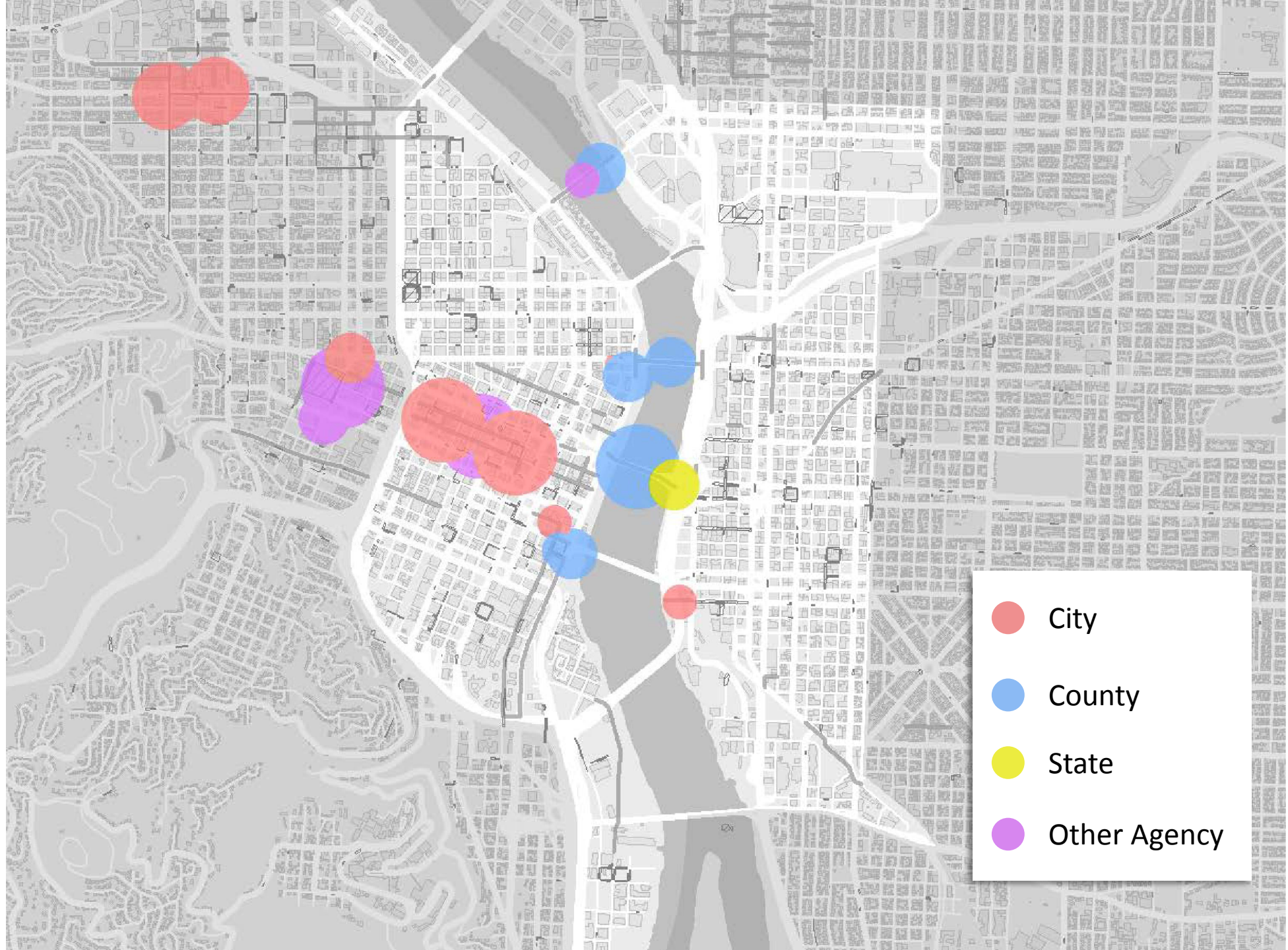
–Portland Streetcar



“We appreciate PBOT's leadership in managing Get Portland Moving and coordination efforts”

– Multnomah County





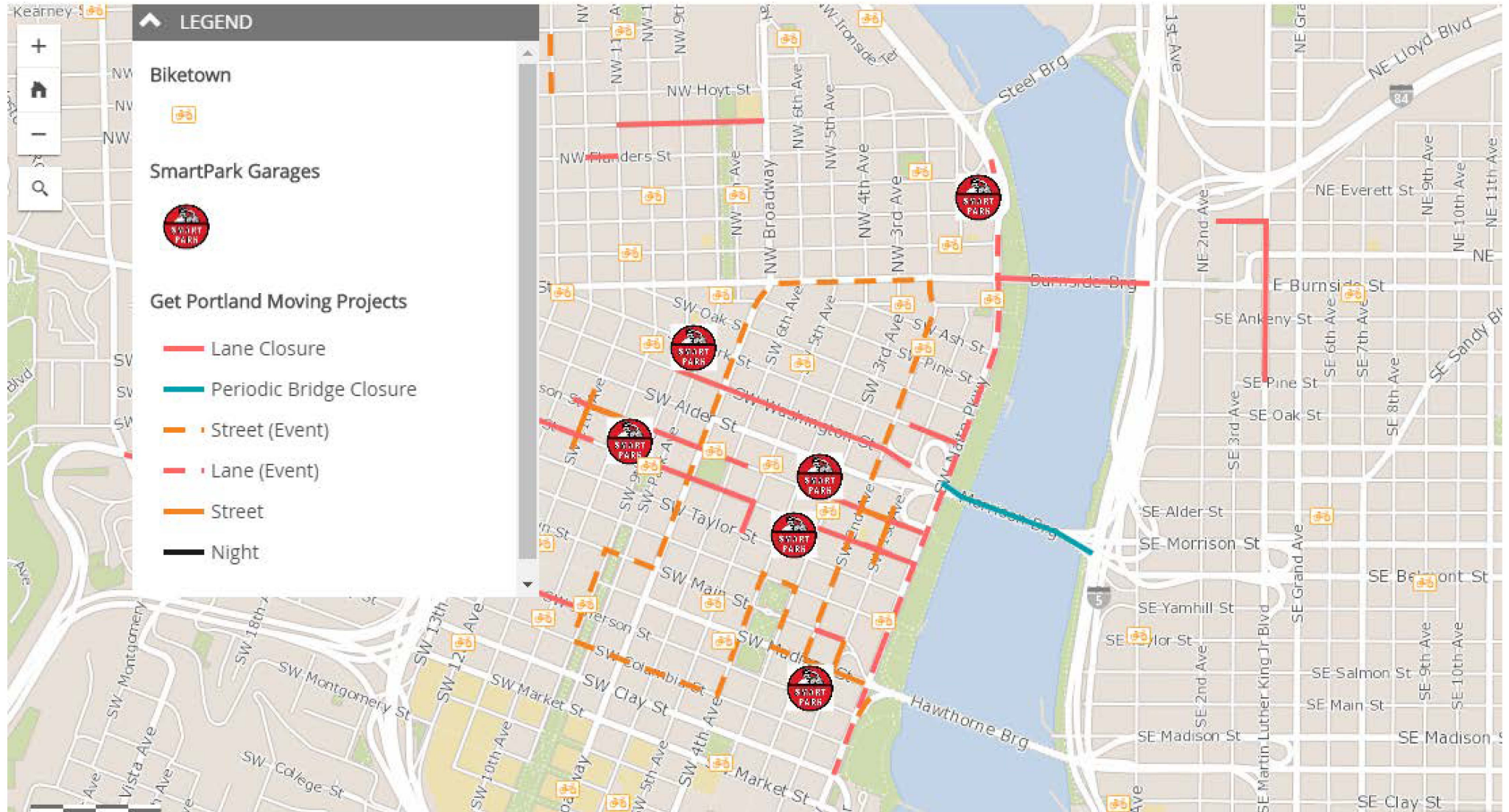
Get Portland Moving Project Map

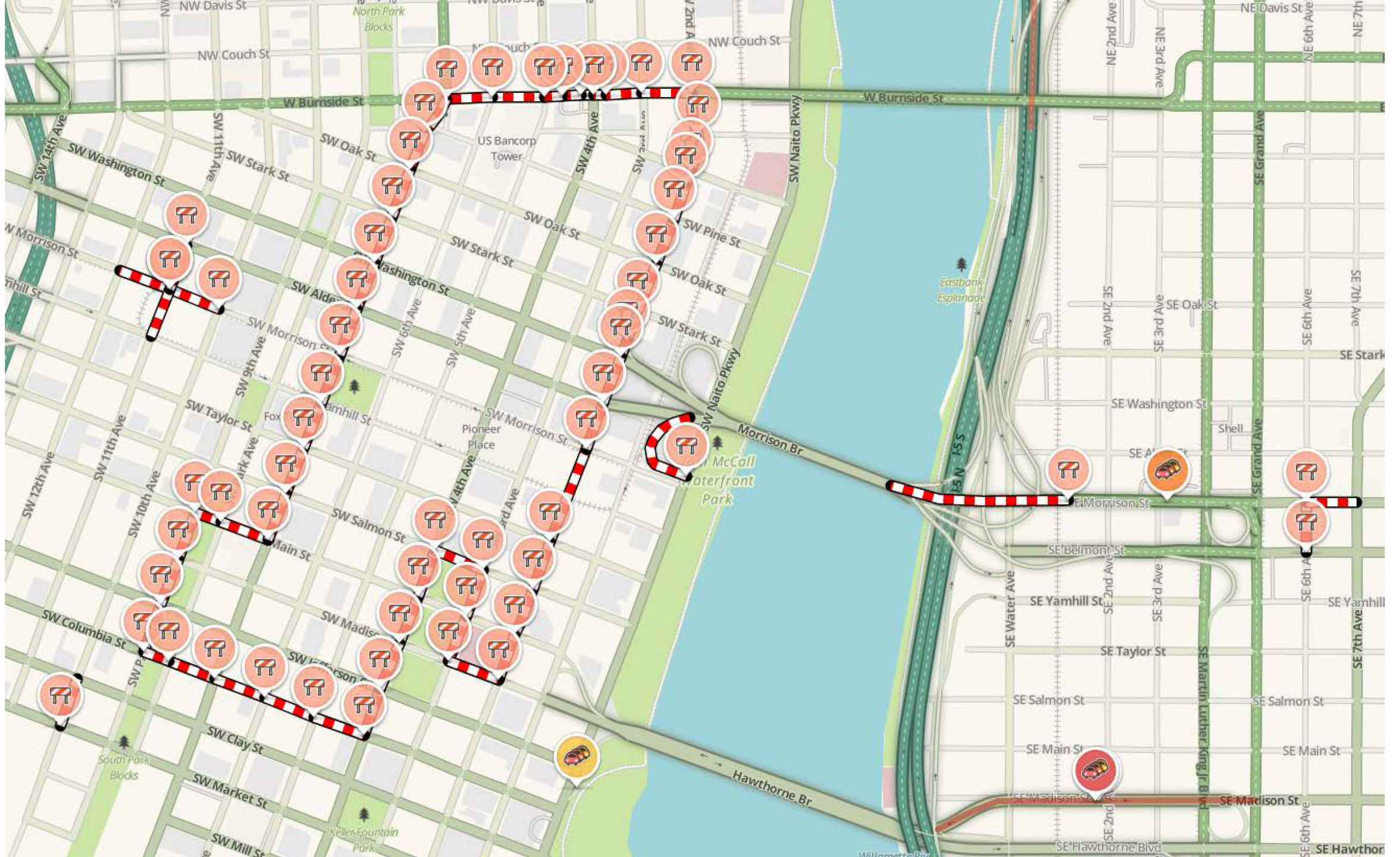
Share this map: [f](#) [t](#) [l](#)



Get Portland Moving is a program aimed at enhancing communication and coordination to lessen the effect of construction projects on the traveling public. Click through this map to view projects planned in Portland's Central City and Cully neighborhood in 2017.

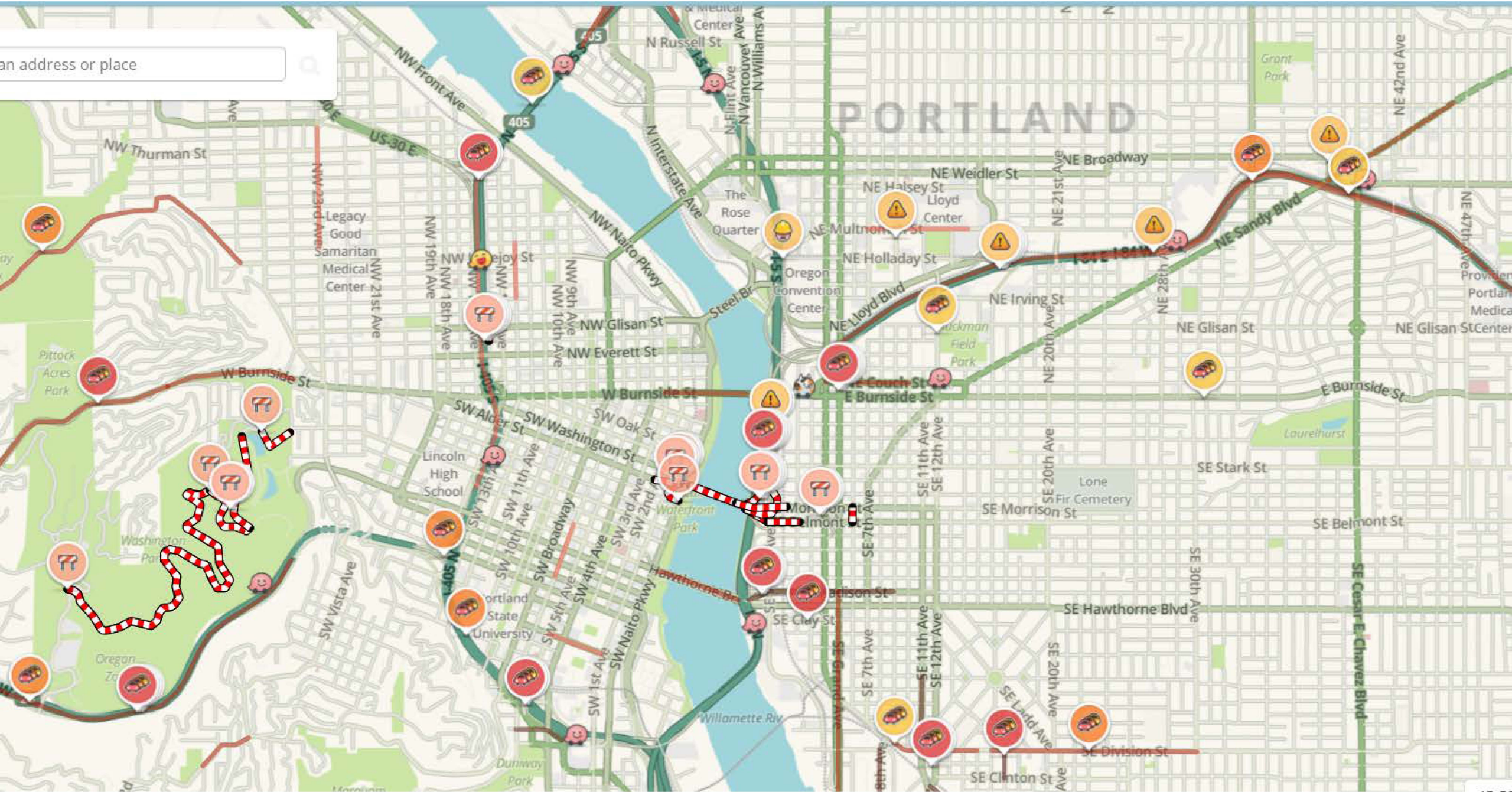
Learn more about the program and view project details at www.movepdx.net.

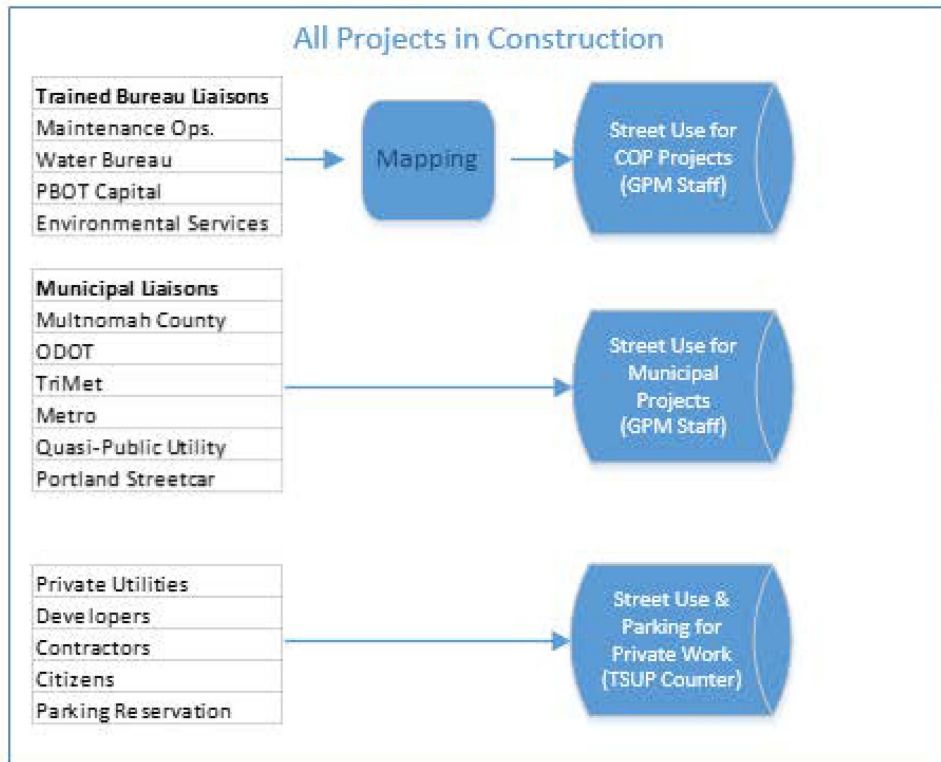
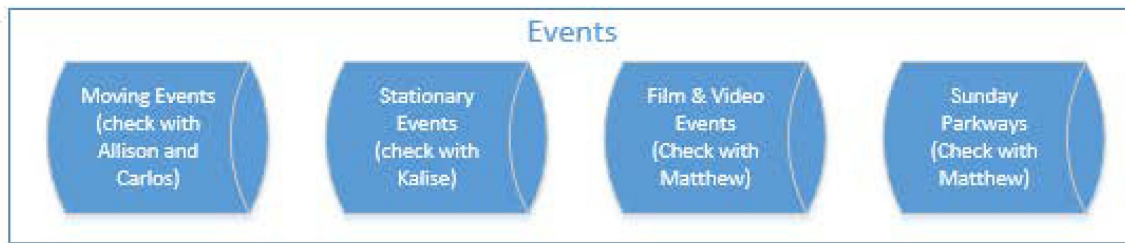




an address or place

PORTLAND





Layer	Type
(for planning)	Polygon, Multipoints, Lines
Event Area	Polygon
Work Activity Area	Polygon
Detour Routes	Line

