



188614

all hands raised

Education, Equity and Excellence
from Cradle to Career

THE ALL HANDS RAISED PARTNERSHIP

Portland City Council

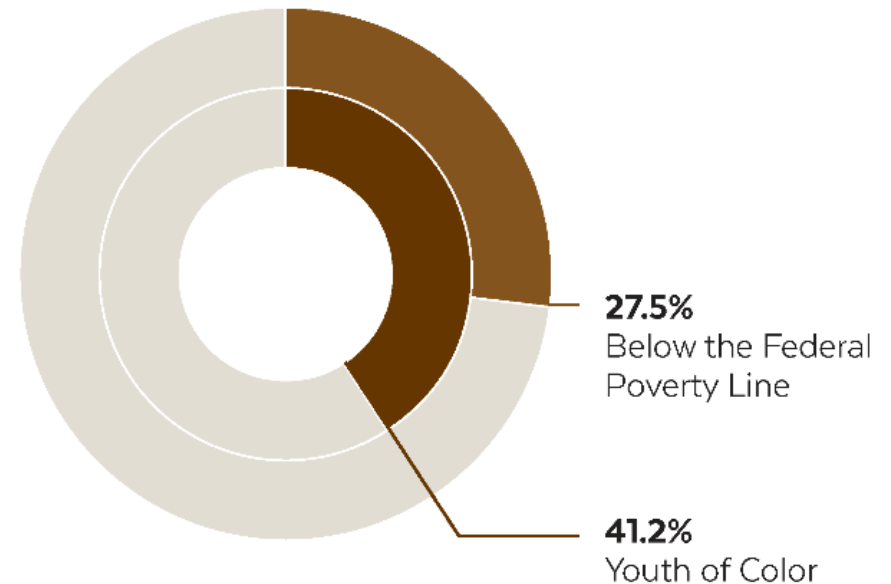
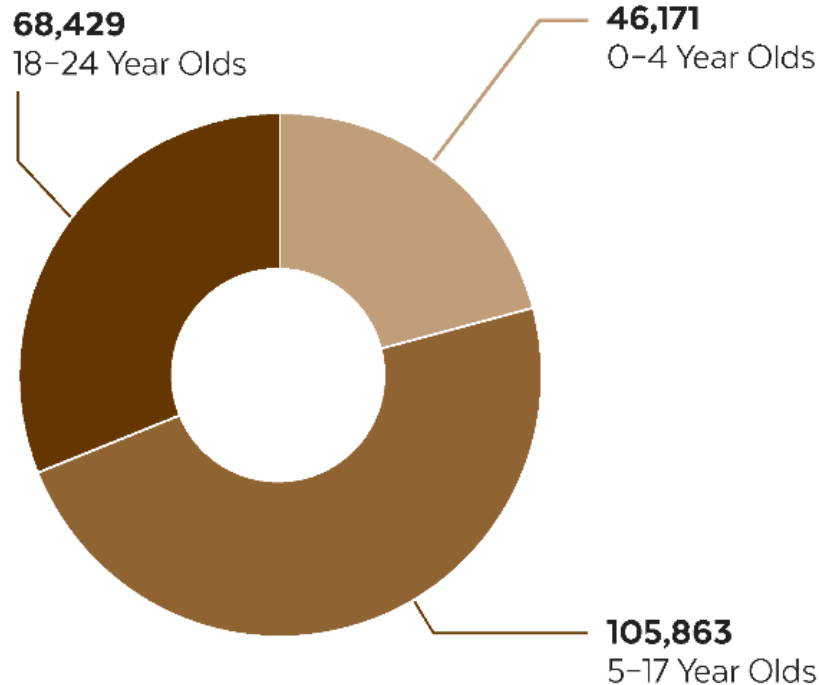
September 27, 2017

All Hands Raised Footprint

188614

all hands raised
Education, Equity and Excellence
from Cradle to Career

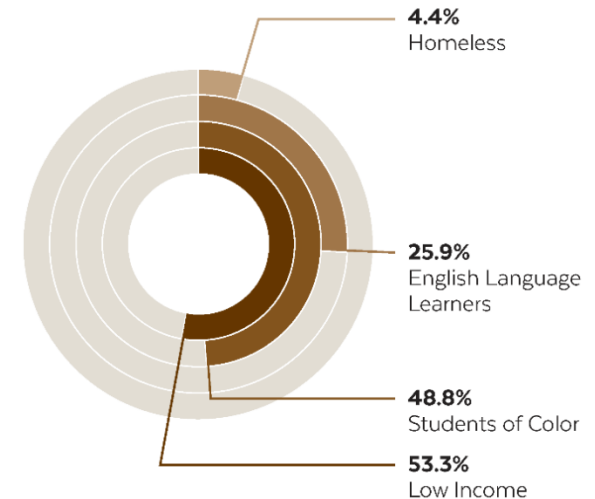
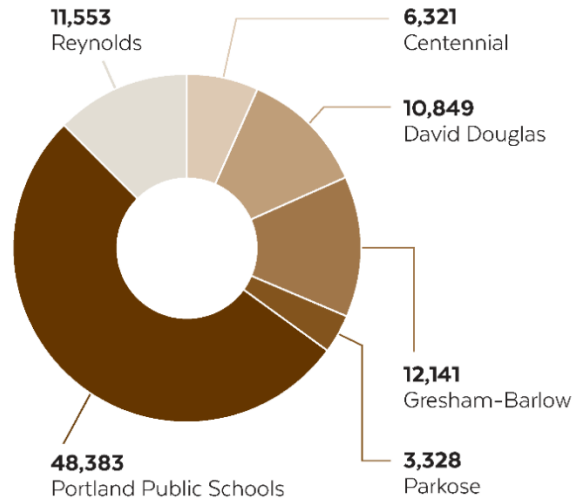
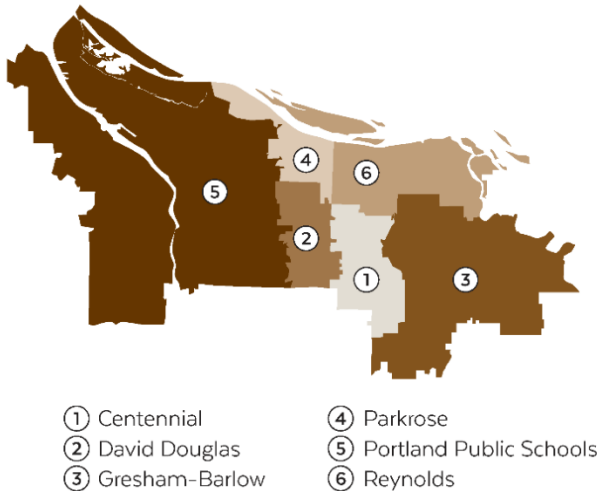
220,463 Individuals Aged 0-24 in Multnomah County



All Hands Raised Footprint

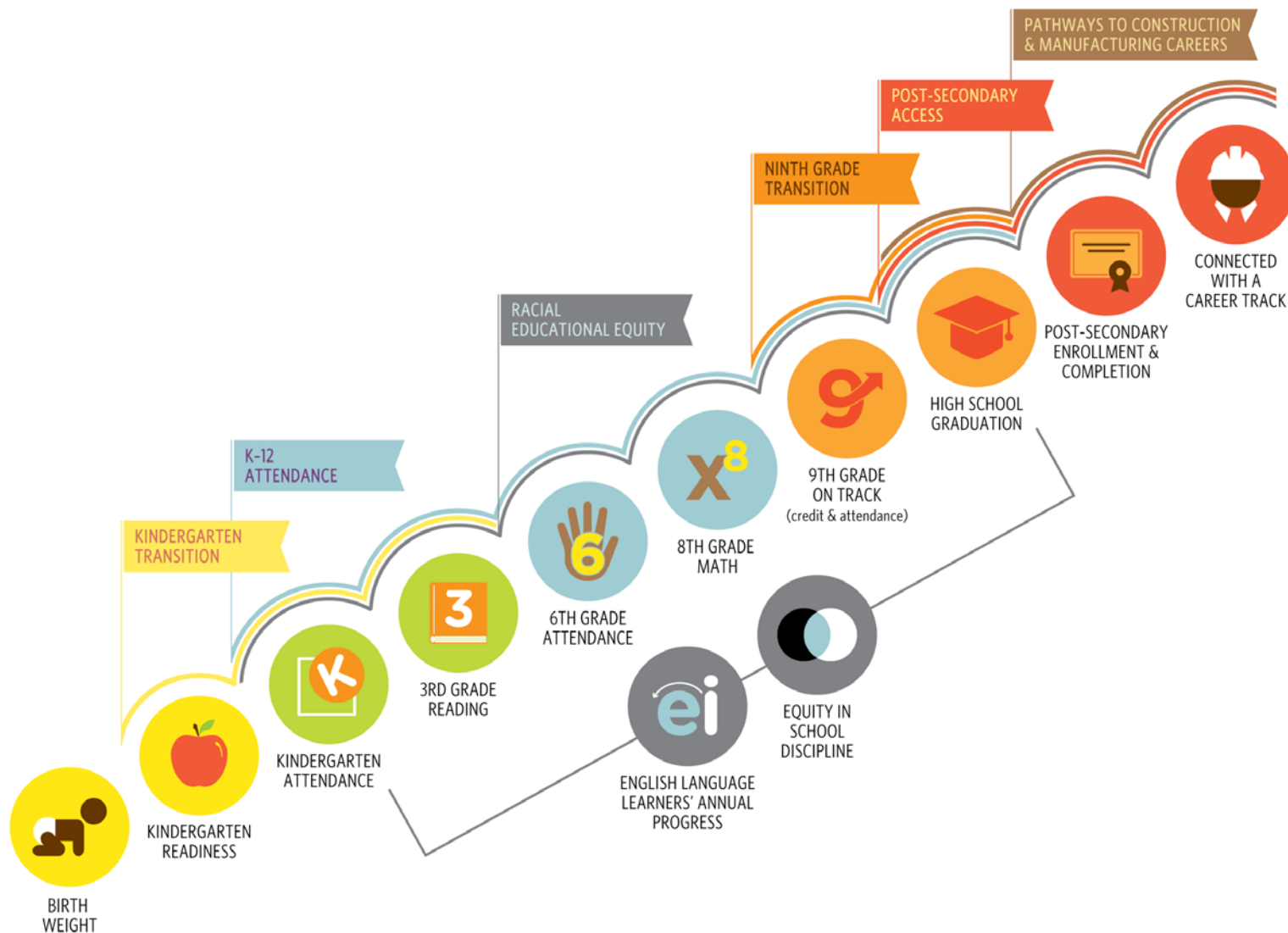
188614

92,575 K-12 Students in Six Districts



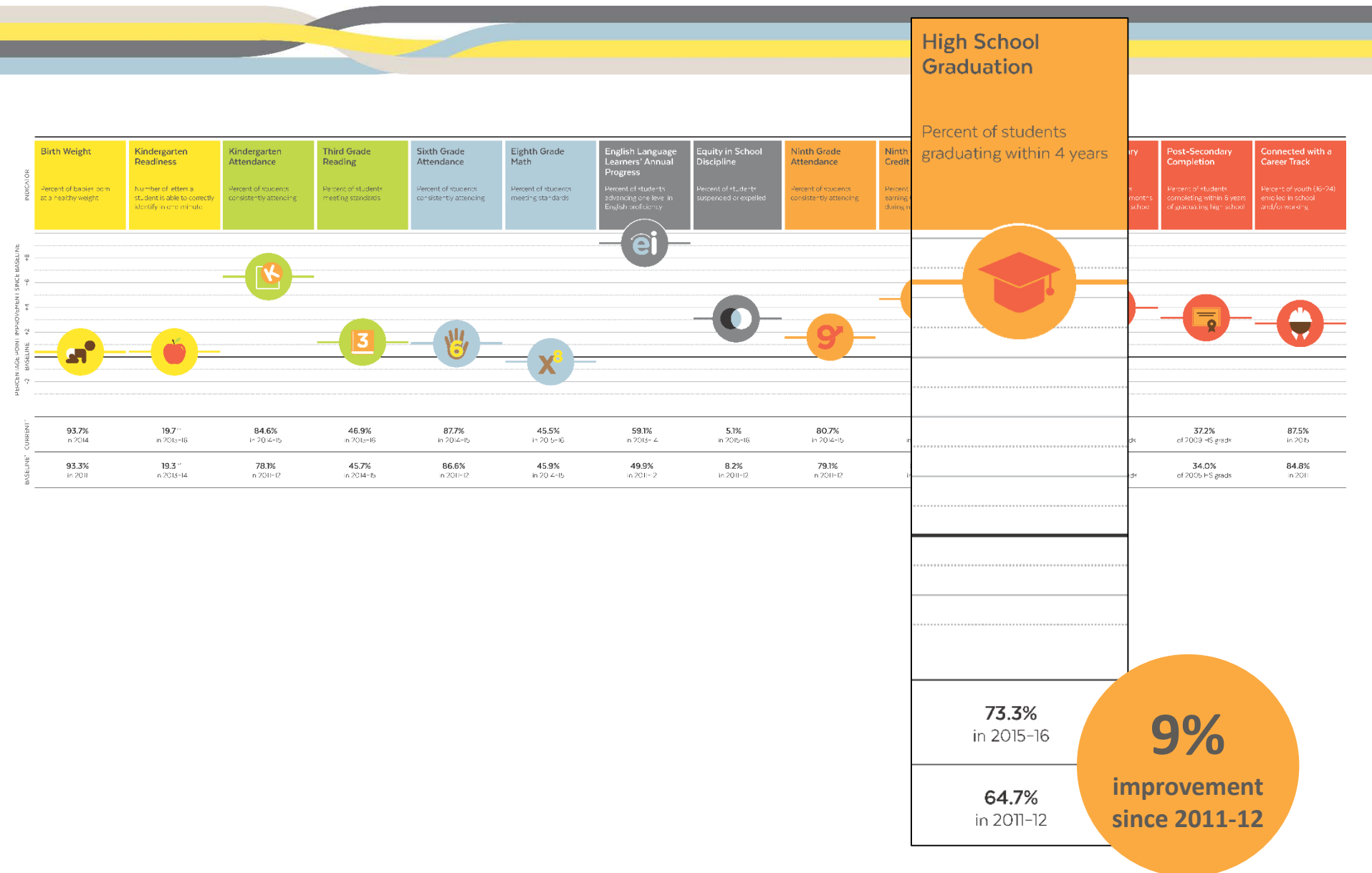
Community-wide Indicators

188614



The Big Picture

188614



Thought and Policy Leaders

**Elected & Appointed
Public Officials**

Funders

Collective Impact
Shared Work

all hands raised


Middle Space

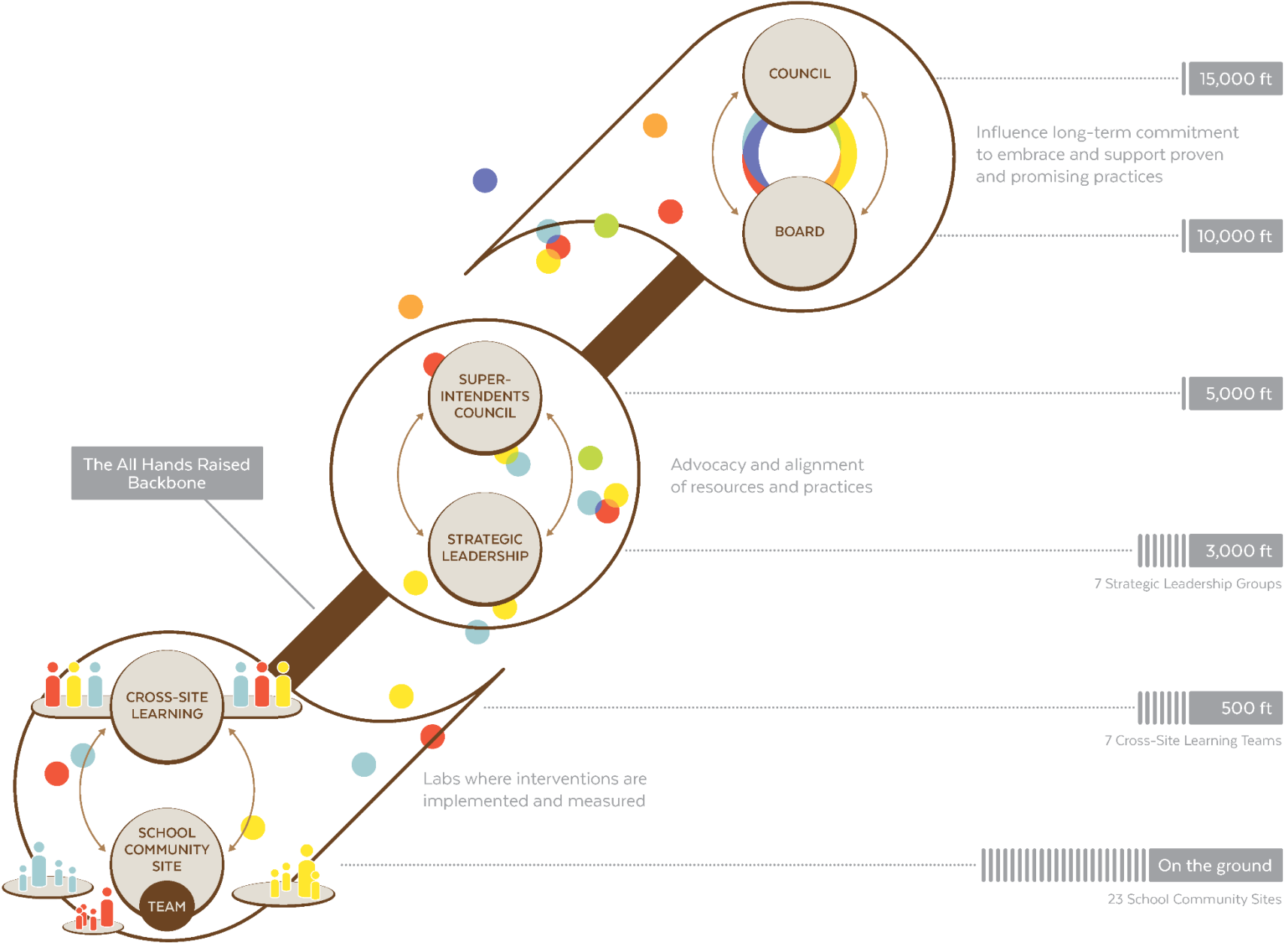
**Continuous
Improvement**
Aligned Practices

Practitioners in the Field

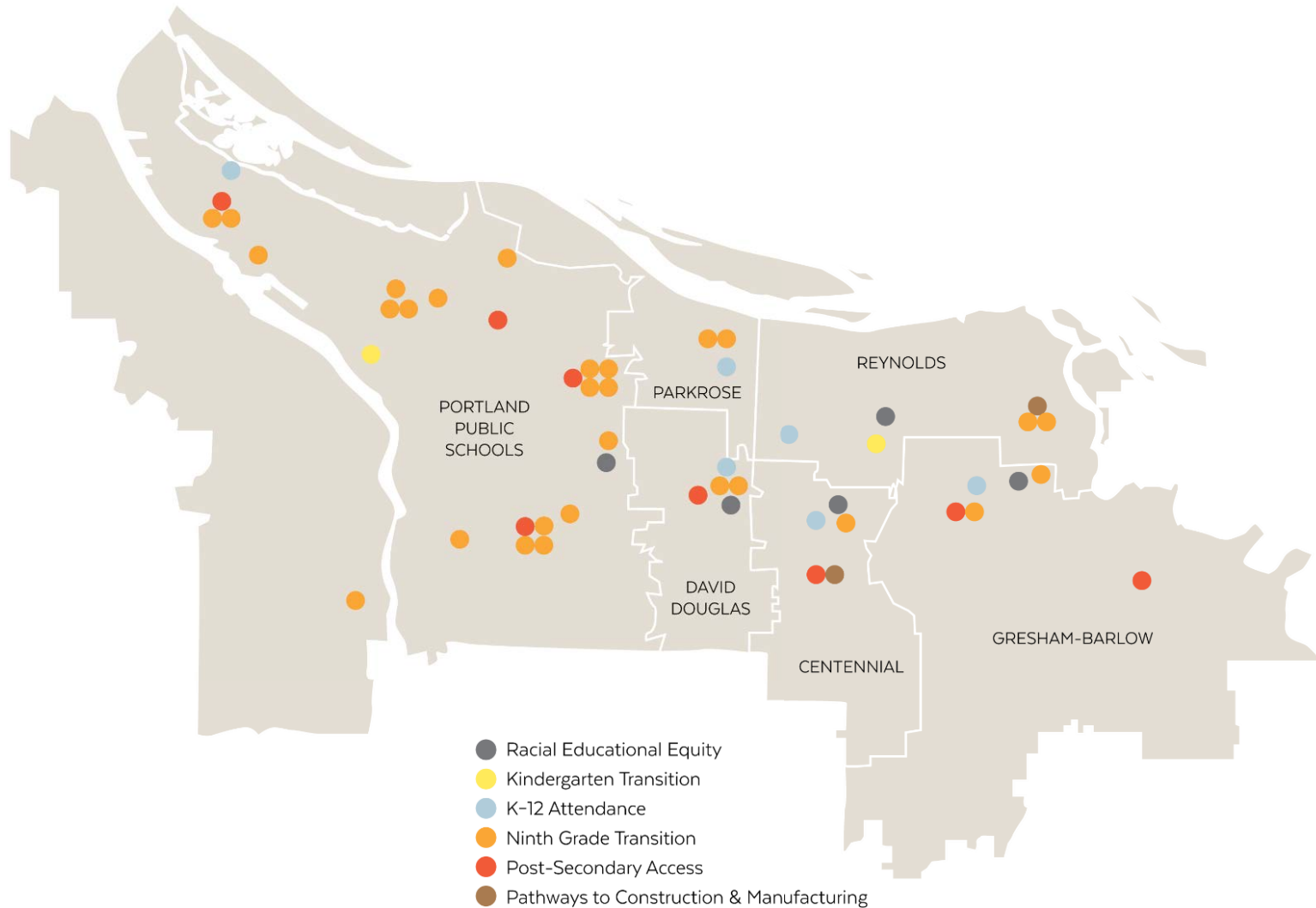
Schools

**Government
Programs**

**Community
Organizations**



2017 School Community Sites¹⁸⁸⁶¹⁴



Racial Educational Equity

188614

all hands raised
Education, Equity and Excellence
from Cradle to Career

46%

Reduction in the number of behavior referrals for both boys and girls at one elementary school that is partnering with All Hands Raised.

In the 2017-18 School Year

We will be working on the ground with



6 School Teams



Kindergarten Transition

188614

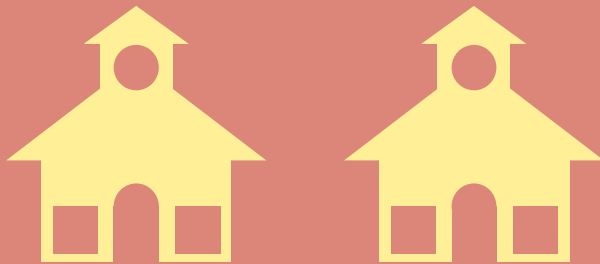
all hands raised
Education, Equity and Excellence
from Cradle to Career

11
POINT

Increase in the rate of on-time kindergarten registration in Multnomah County over the past four years.

In the 2017-18 School Year

We will be working on the ground with



2 School Teams



K-12 Attendance

188614

all hands raised
Education, Equity and Excellence
from Cradle to Career

5

Core practices leading to improved attendance identified by six schools that partnered with All Hands Raised to test interventions in 2015-16.

In the 2017-18 School Year

We will be working on the ground with



6 School Teams



Ninth Grade Transition

188614

all hands raised
Education, Equity and Excellence
from Cradle to Career

95%

Of Ninth Grade Counts students start high school with 0.5 credit toward graduation for completing the program.

In the Summer of 2017

We worked on the ground alongside



16 Ninth Grade Counts Programs



Post-Secondary Access

188614

all hands raised
Education, Equity and Excellence
from Cradle to Career

14
POINT

Increase in the rate of Free Application for Federal Student Aid (FAFSA) completions at one high school that partnered with All Hands Raised.

In the 2017-18 School Year

We will be working on the ground with



3 School Teams



Post-Secondary Completion

188614

all hands raised
Education, Equity and Excellence
from Cradle to Career

ONLY
37%

Of all students who enroll in college actually persist in completing a degree or certificate.

This work area is in the earliest stages of development – we are currently working in close collaboration with our post-secondary partners to apply our data-driven, results-based approach towards the launch of one or more School Teams.



Pathways to Construction & Manufacturing

188614

all hands raised
Education, Equity and Excellence
from Cradle to Career

27
POINT

Higher graduation rate for
students of color who access
career-technical education.

In the 2017-18 School Year

We will be working on the ground with



3 School Teams

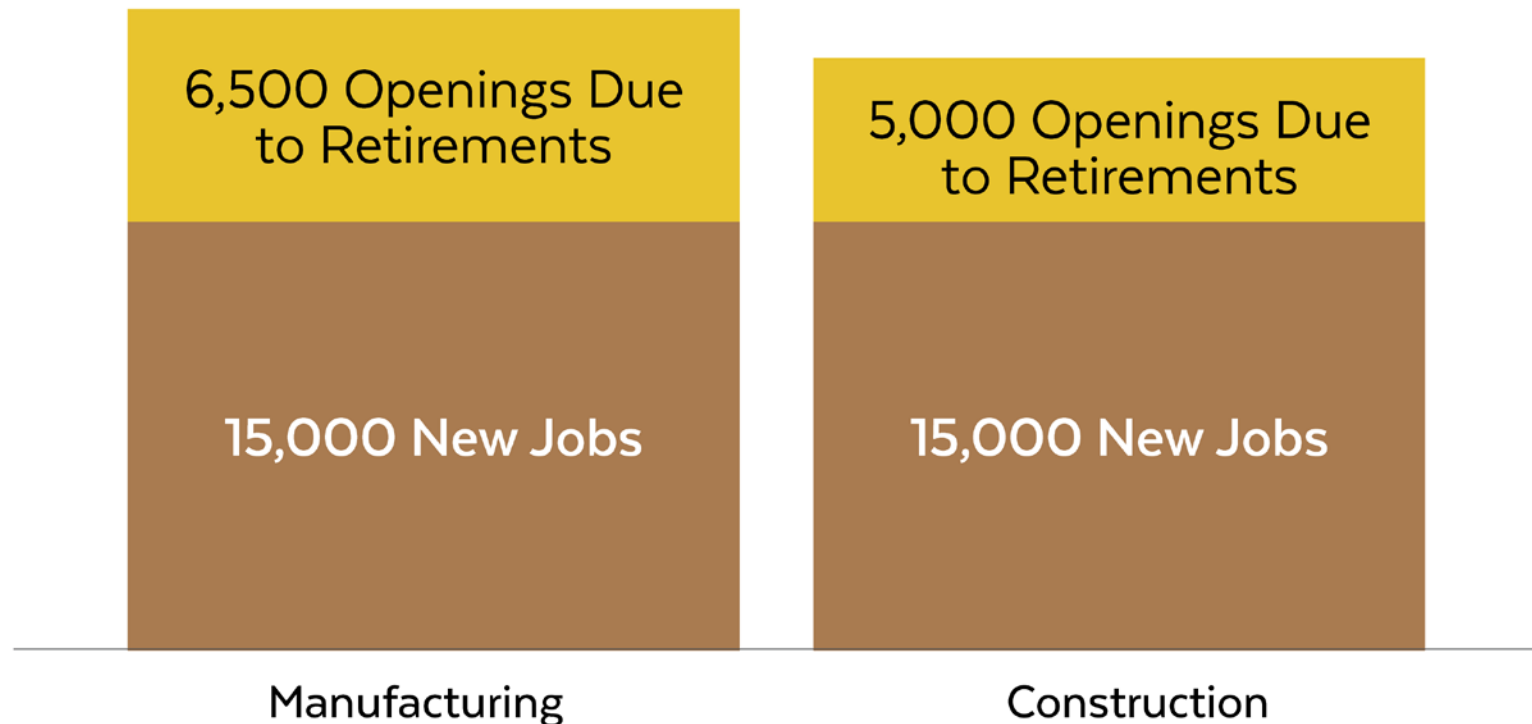


Forging Pathways from Schools to Careers

188614

Ten-Year Job Opening Projections for the Portland Region

2014-2024





Thank You to the Businesses Who Hosted Tours!

- Boeing Portland
- Connor Manufacturing Services
- GROVTEC US Inc.
- Gunderson LLC
- Jaguar Land Rover
- KCR Manufacturing
- Microchip Technology Inc.
- NECA-IBEW Electrical Training Center
- Northwest College of Construction
- O'Neill Construction Group
- OR & SW Washington Mason Trades JATC
- Pacific Northwest Carpenters Institute
- PCC Structurals, Inc.
- Port of Portland
- Sheet Metal Institute
- Turner Construction Company
- Vigor
- Wright Business Graphics

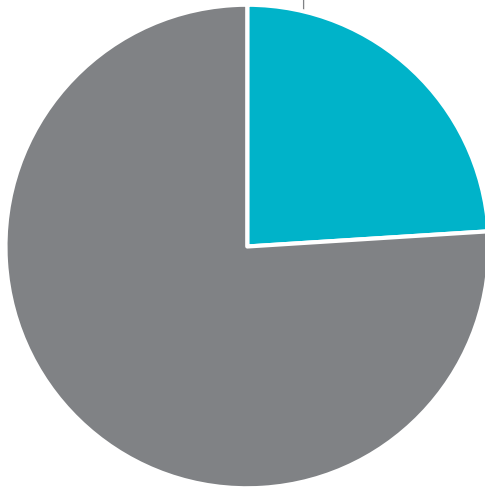


City of Portland Investment in All Hands Raised

188614

2010

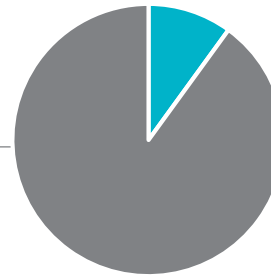
\$200k in City investment
represented 24% of All
Hands Raised budget



2017

700

Donors leveraged
thanks to investments
from the City

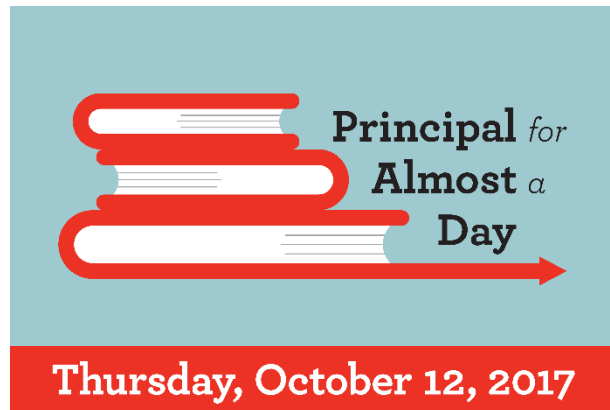


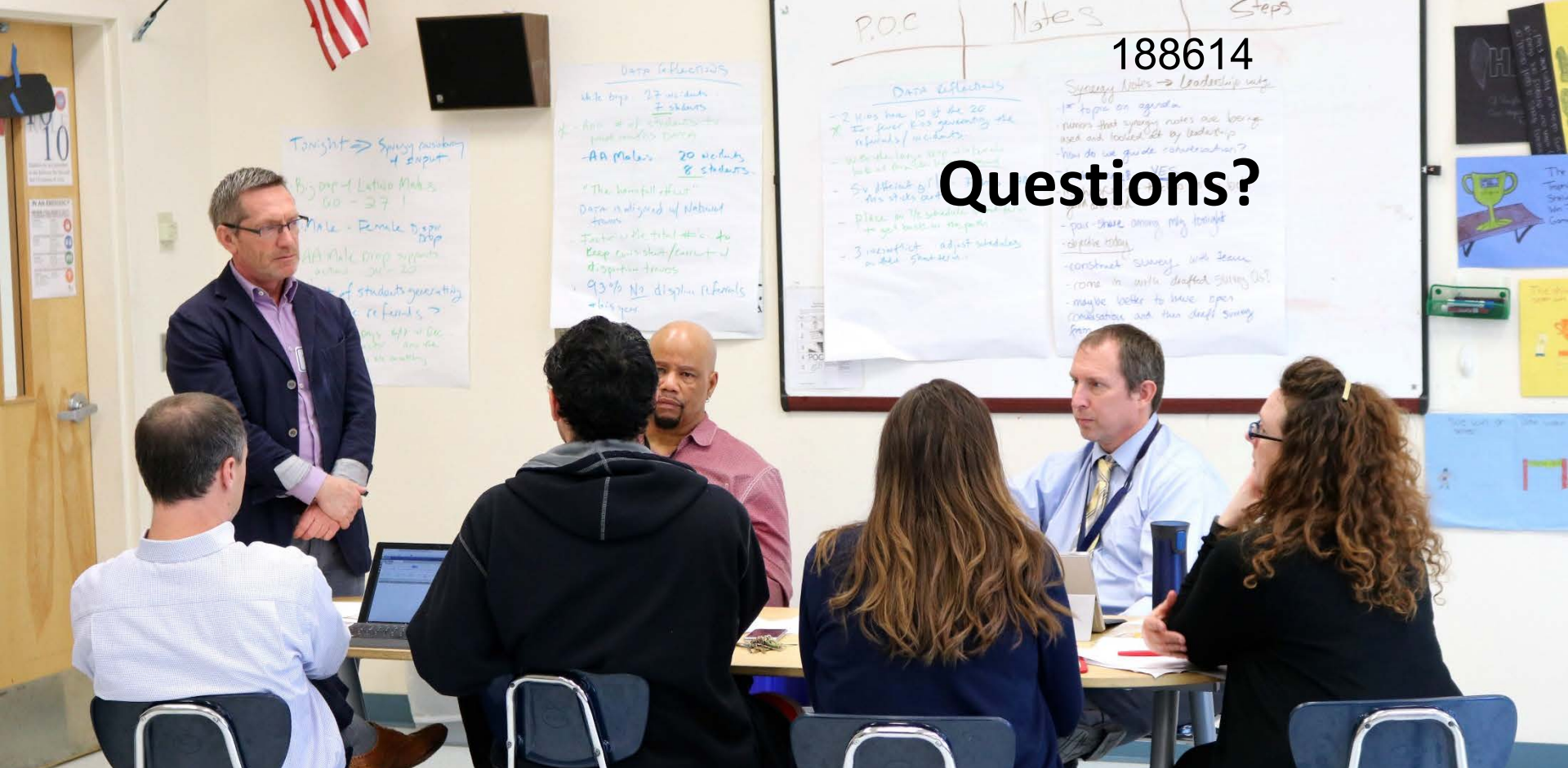
City investment now
represent 10% of our
total budget

\$1.5
million

Of in-kind services provided
by All Hands Raised to our
city-wide footprint,
particularly outer north
and outer east Portland

188614





THE ALL HANDS RAISED PARTNERSHIP

all hands raised
Education, Equity and Excellence
from Cradle to Career

Welcome to Chapter 04