

# FAIR HOUSING ADVOCACY COUNCIL (FHAC)

Fair Housing Assessment: Data Analysis Meeting #1

# Information Presented

1. Demographic Summary
2. Geographic Analysis
3. Dissimilarity Index
4. Determinants of Segregation
5. Households in Assisted Housing
6. Publicly Supported Housing and Mobility Policies
7. Summary and next steps

# Geography

- Map of geography analyzed:





# Protected Classes

---

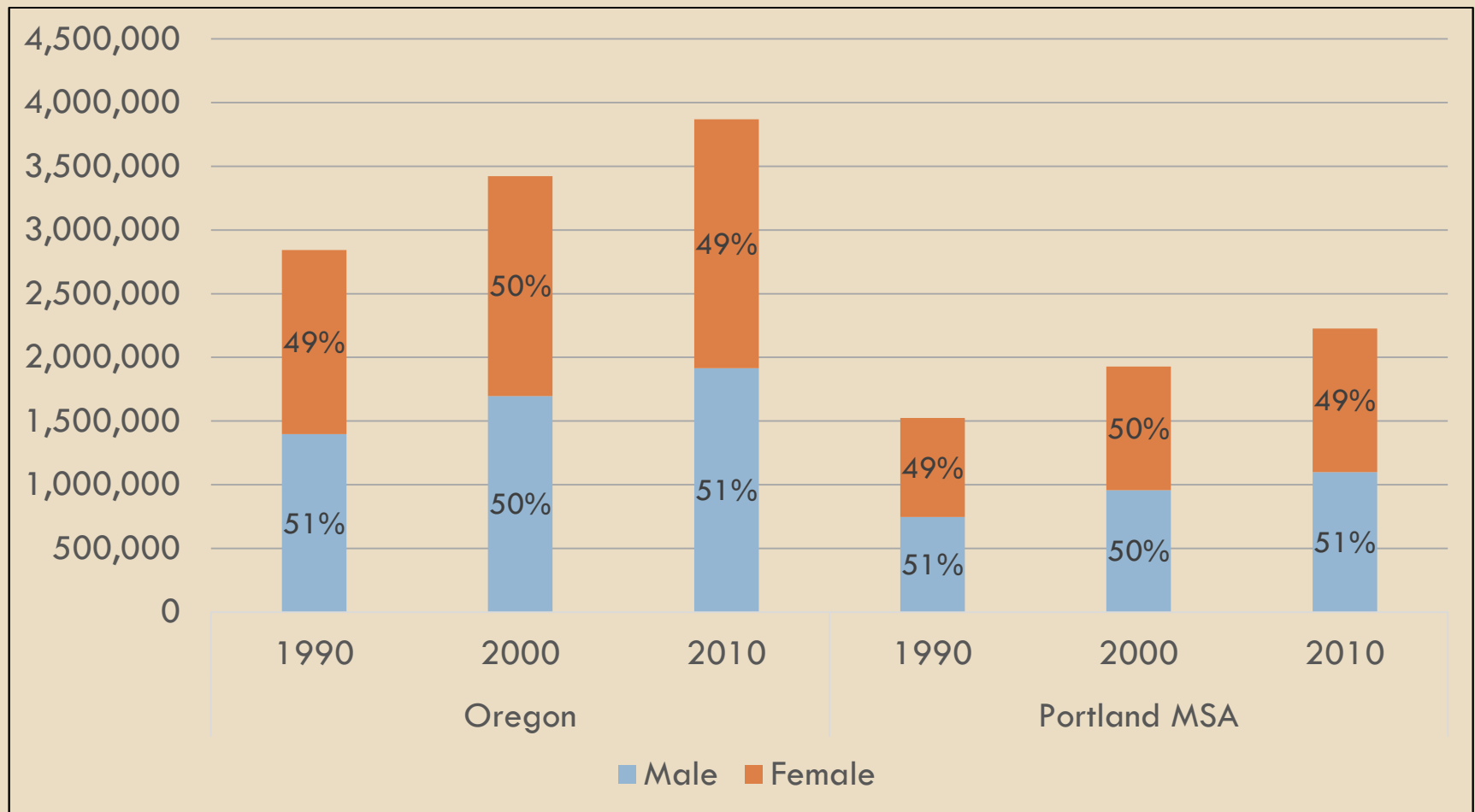
- **Federally Protected Classes:**
- race, color, national origin, religion, gender, familial status, and disability
  
- **State Protected Classes Include**
- marital status, source of income, sexual orientation including gender identity, and domestic violence victims.



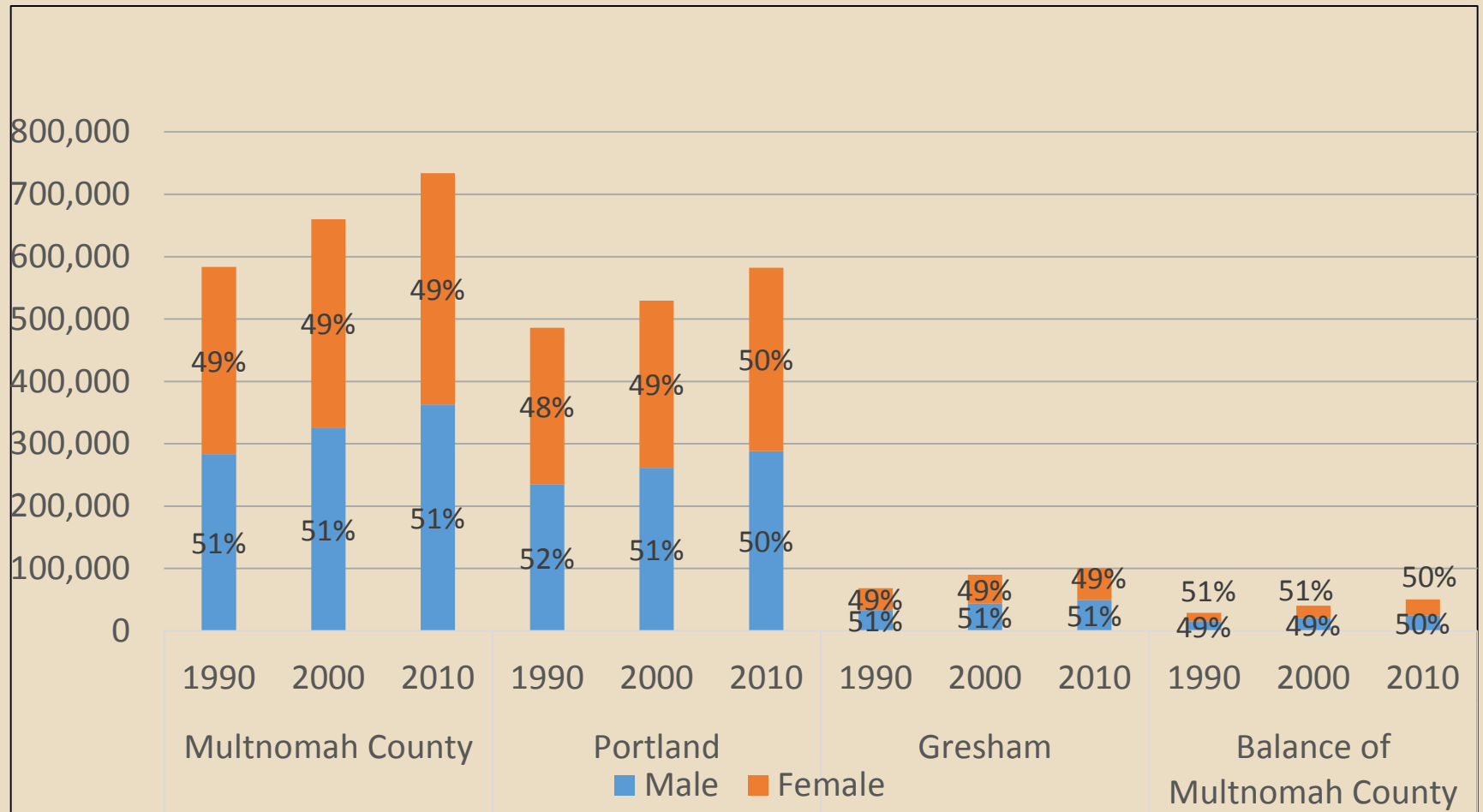
# DEMOGRAPHIC SUMMARY



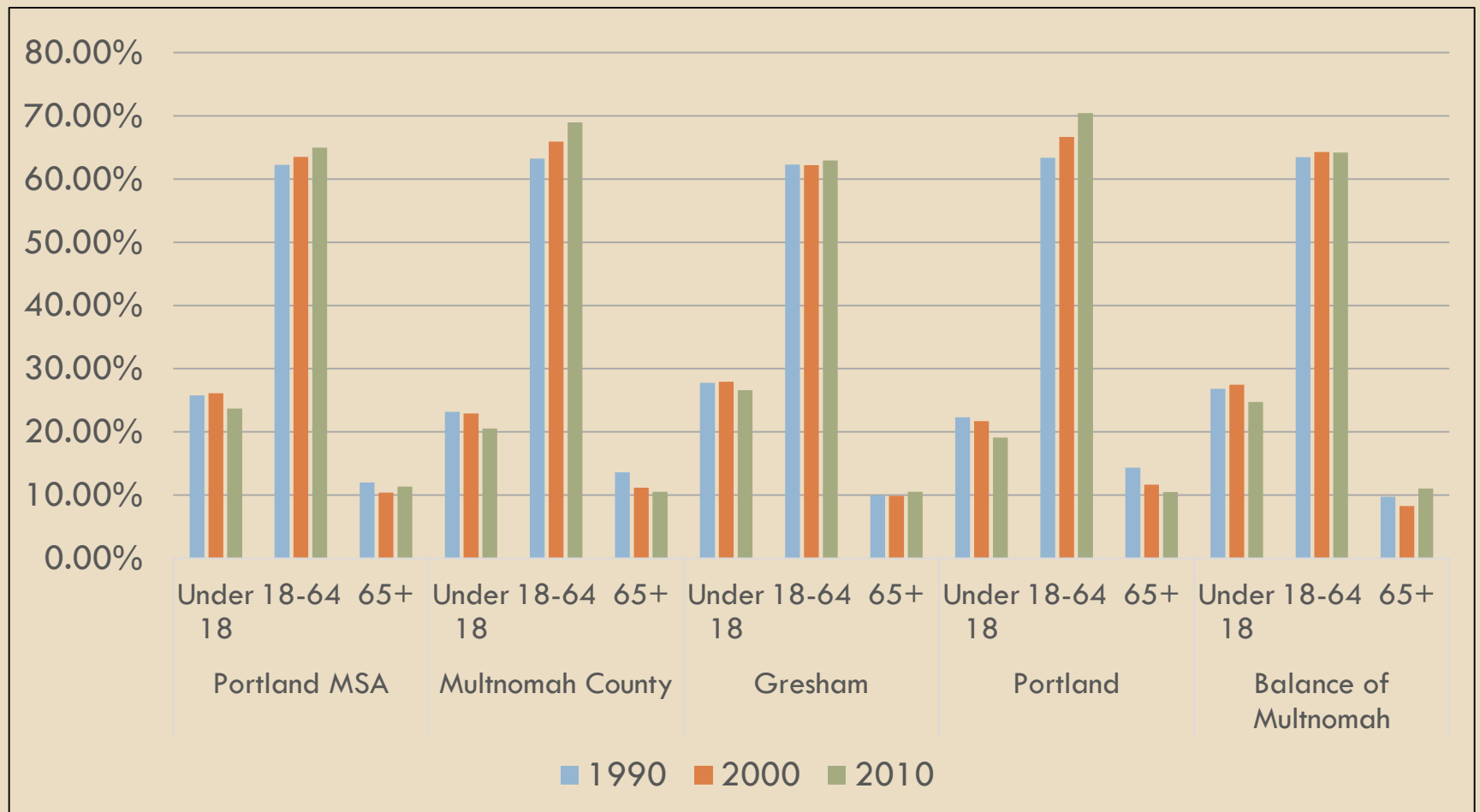
# Total Population and Gender - Regional



# Total Population and Gender – Local Jurisdictions

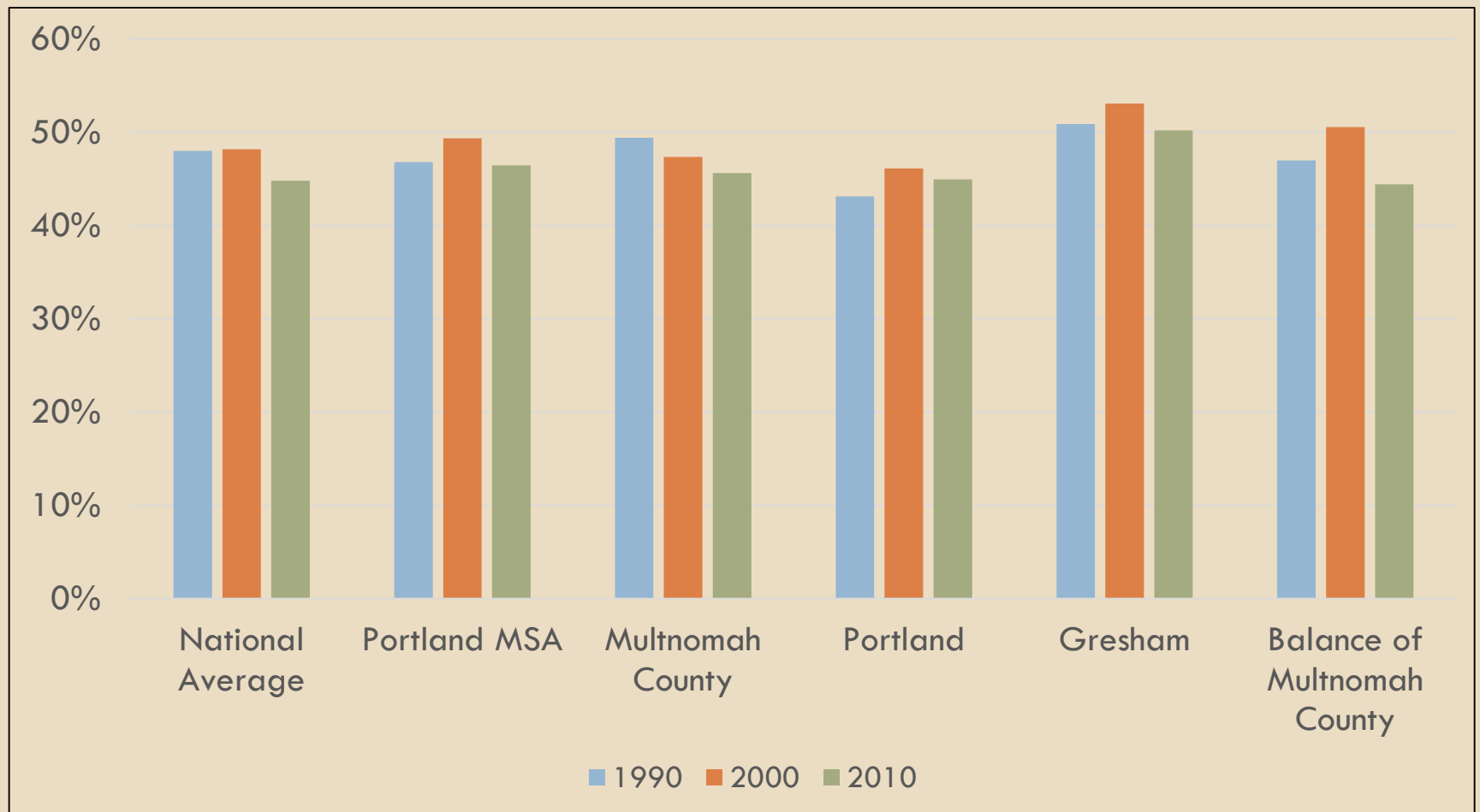


# Age



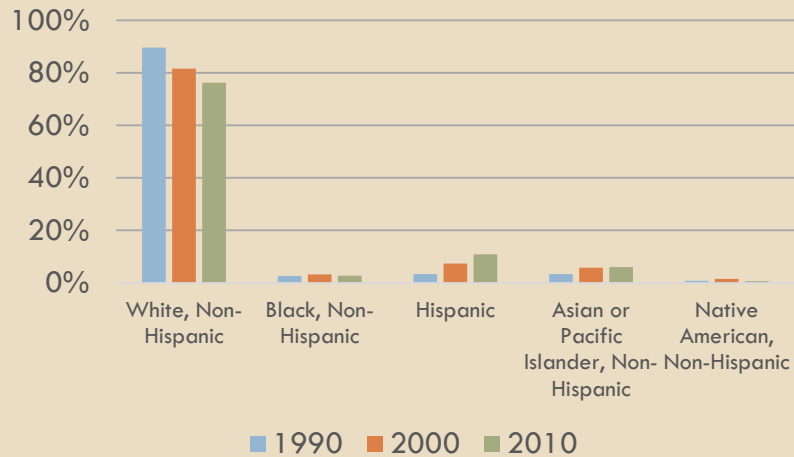


# Families with Children

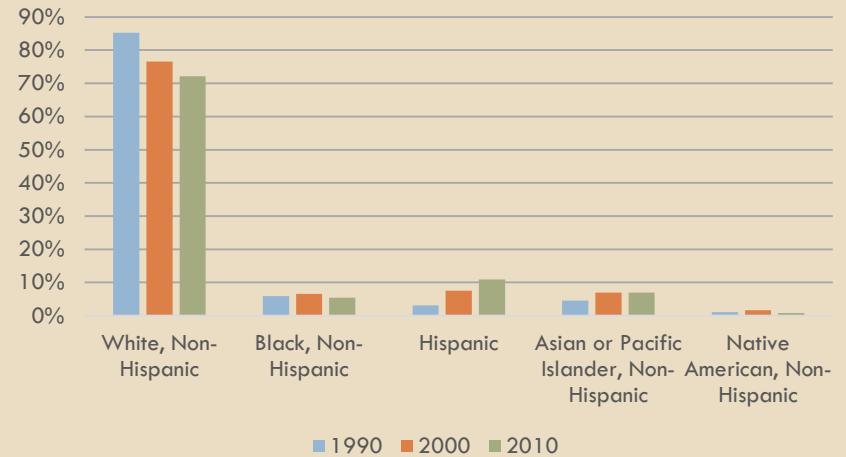


# Race and Ethnicity

Portland MSA - Race/Ethnicity Trends

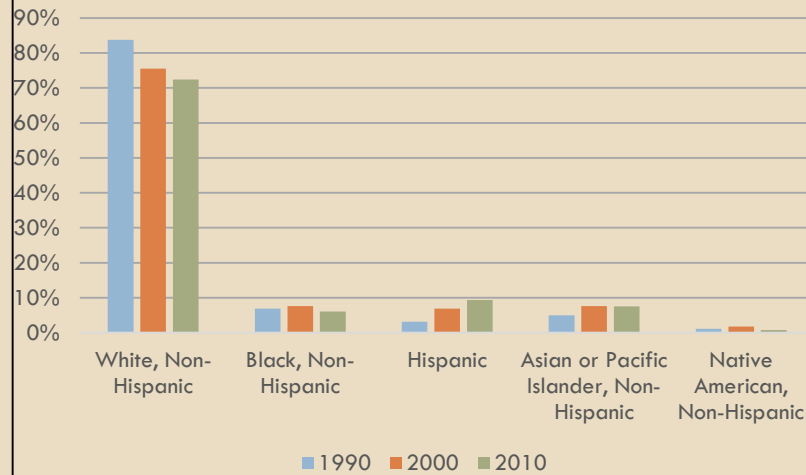


Multnomah County- Race/Ethnicity Trends

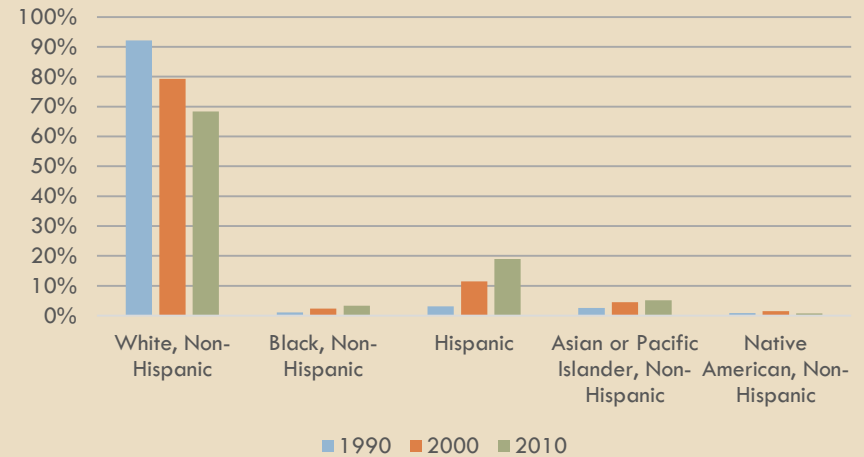


# Race and Ethnicity (Cont)

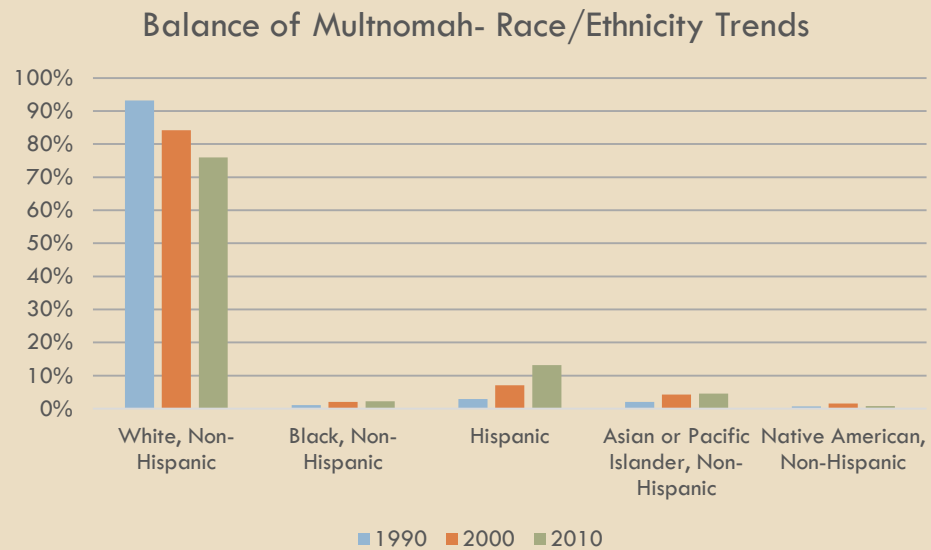
Portland - Race/Ethnicity Trends



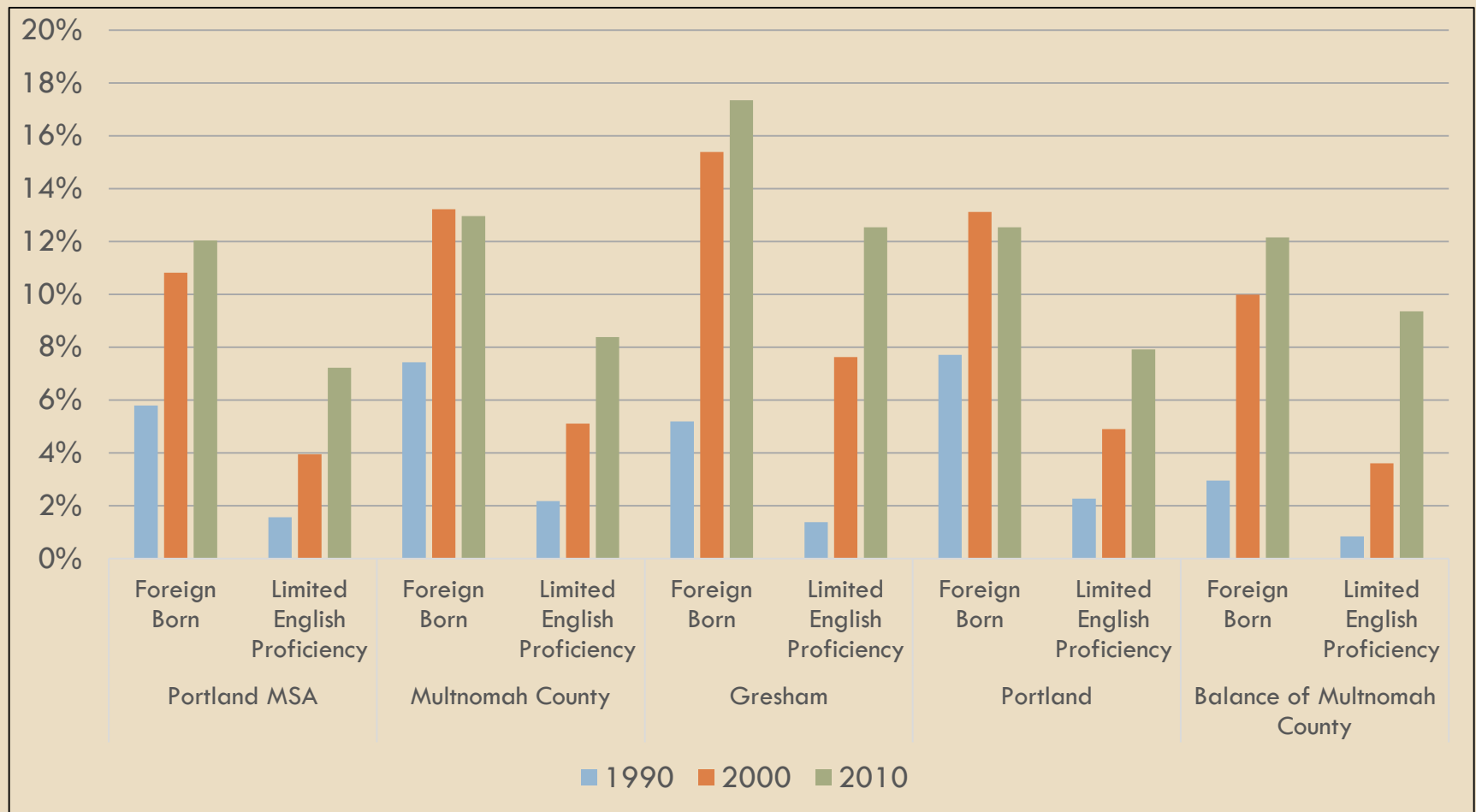
Gresham - Race/Ethnicity Trends



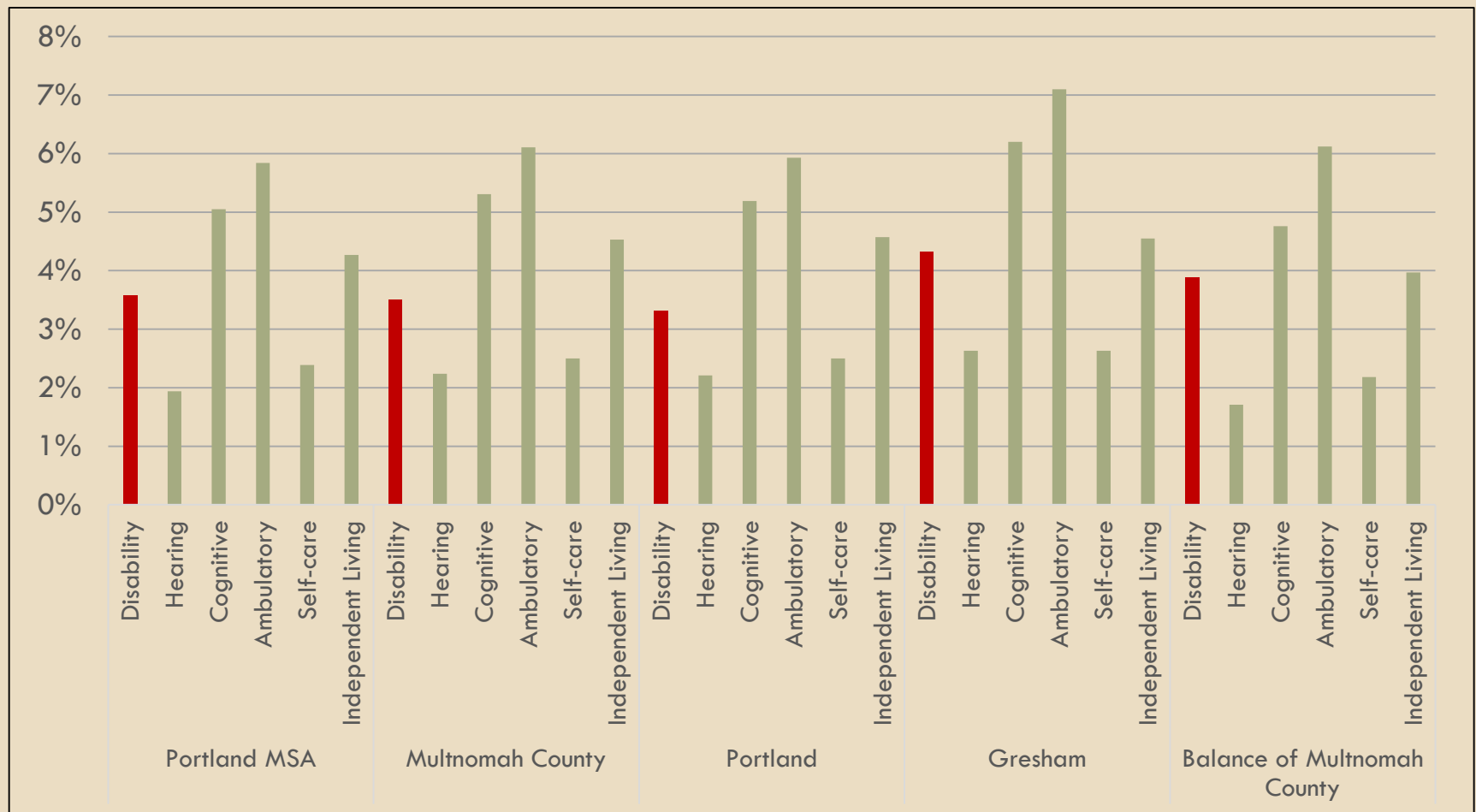
# Race and Ethnicity (Cont)



# National Origin and Limited English Proficiency (LEP)



# Disability Status and Type

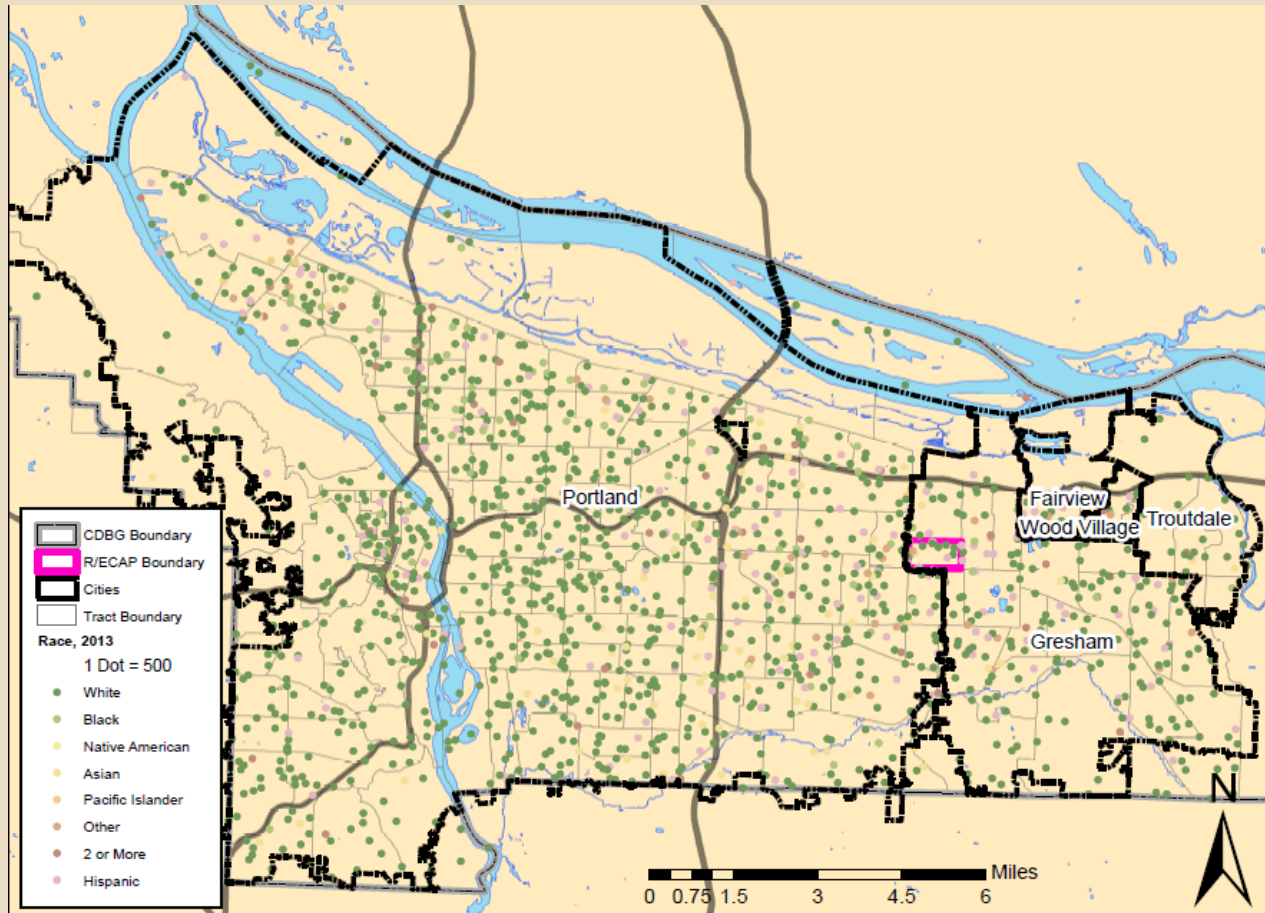




# GEOGRAPHIC ANALYSIS

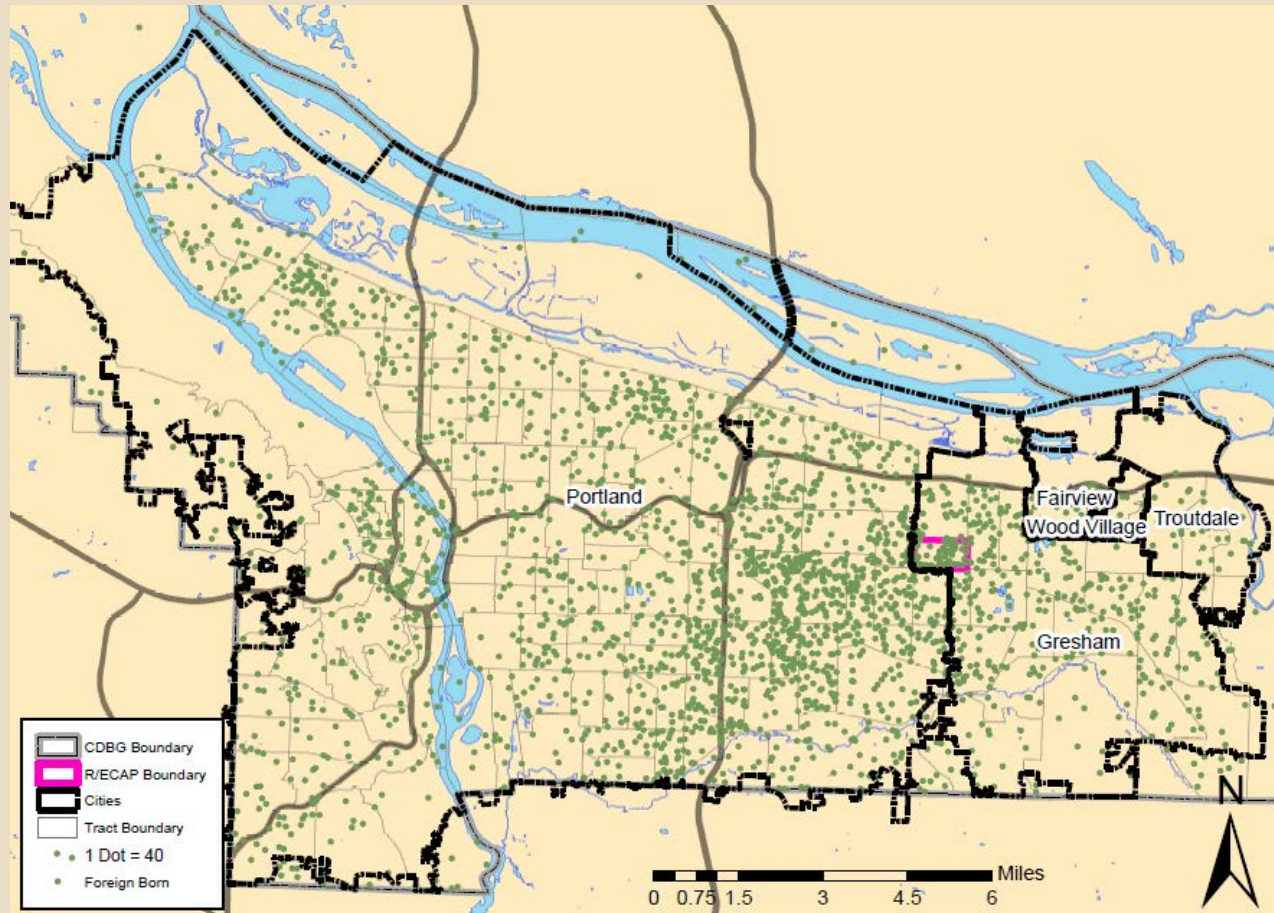


# Race/Ethnicity Dot Density Map Multnomah County, 2013

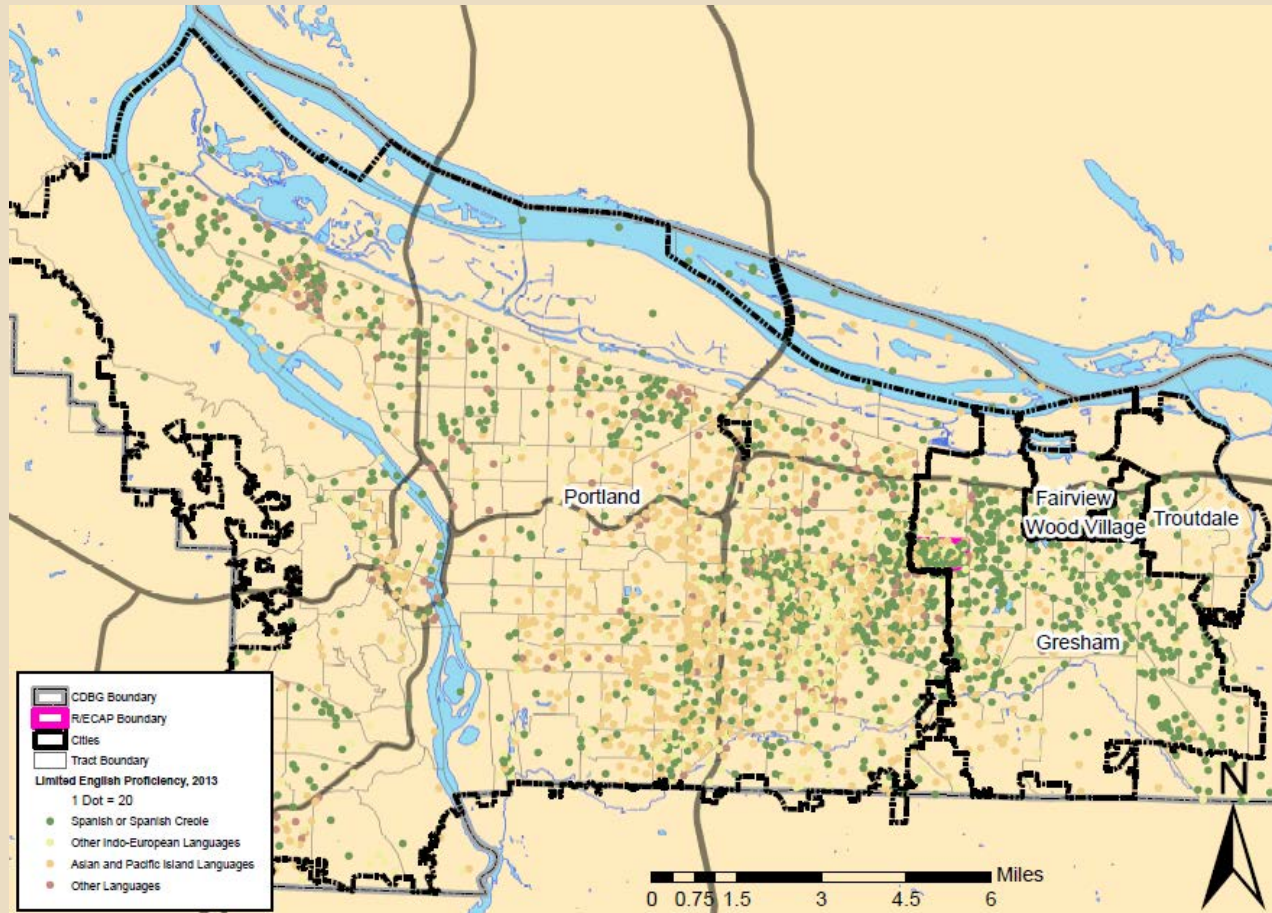




# National Origin (2013)



# Limited English Proficiency Persons (2013)





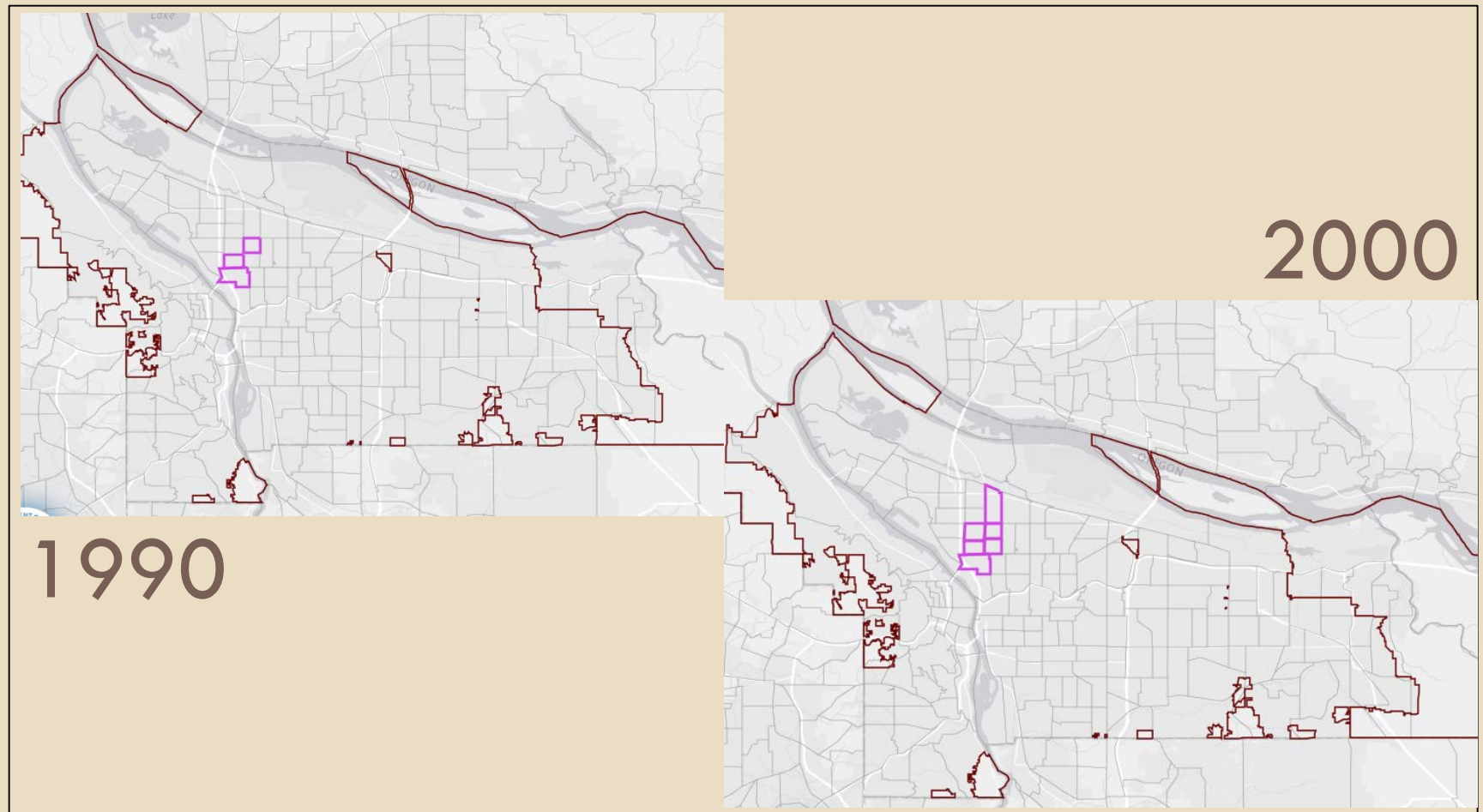
# Geography

- Racially/Ethnically-Concentrated Areas of Poverty (R/ECAP)
- How is a R/ECAP defined?
  - R/ECAPS “must have a non-white population of 50 percent or more.”

**AND**

- R/ECAPs have “a poverty rate that exceeds 40% or is 3 times the average tract poverty rate for the metro/micro area, whichever threshold is lower”

# R/ECAP



# Race/Ethnicity Dot Density Map Multnomah County, 2013

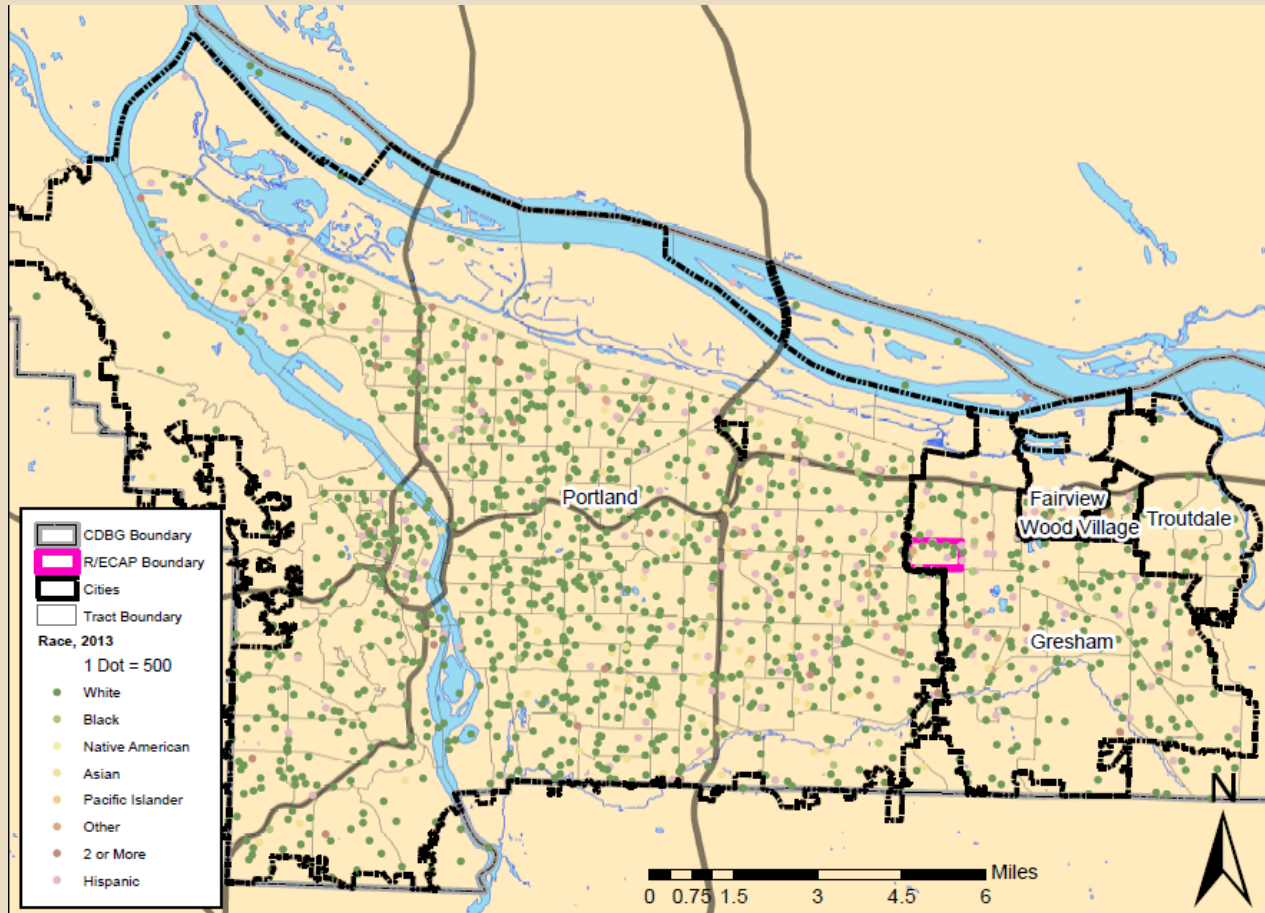
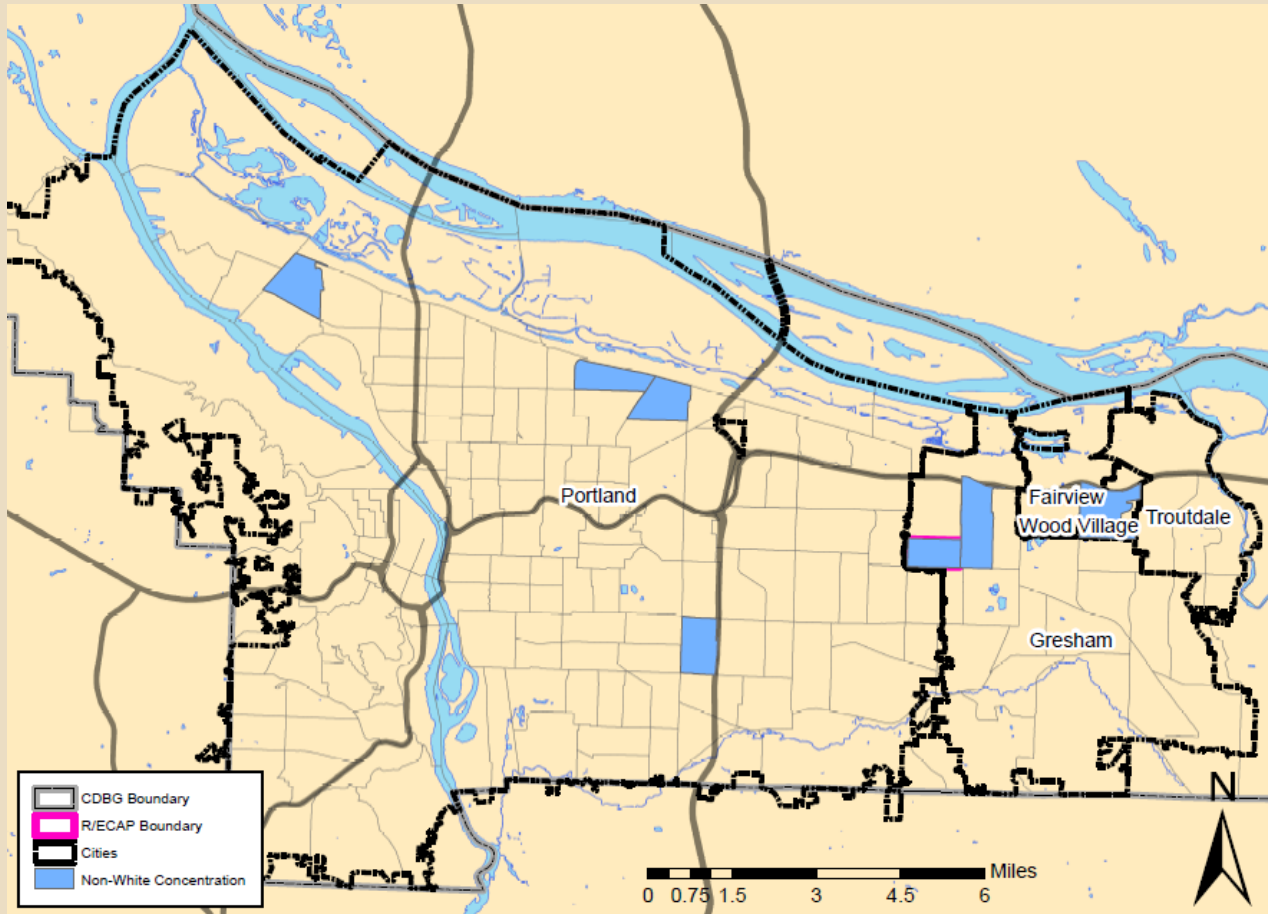


Table. The percentage of racial/ethnic groups, families with children, and national origin (top 10) in the Jurisdiction and Region who reside in R/ECAPS (Tract 96.06)

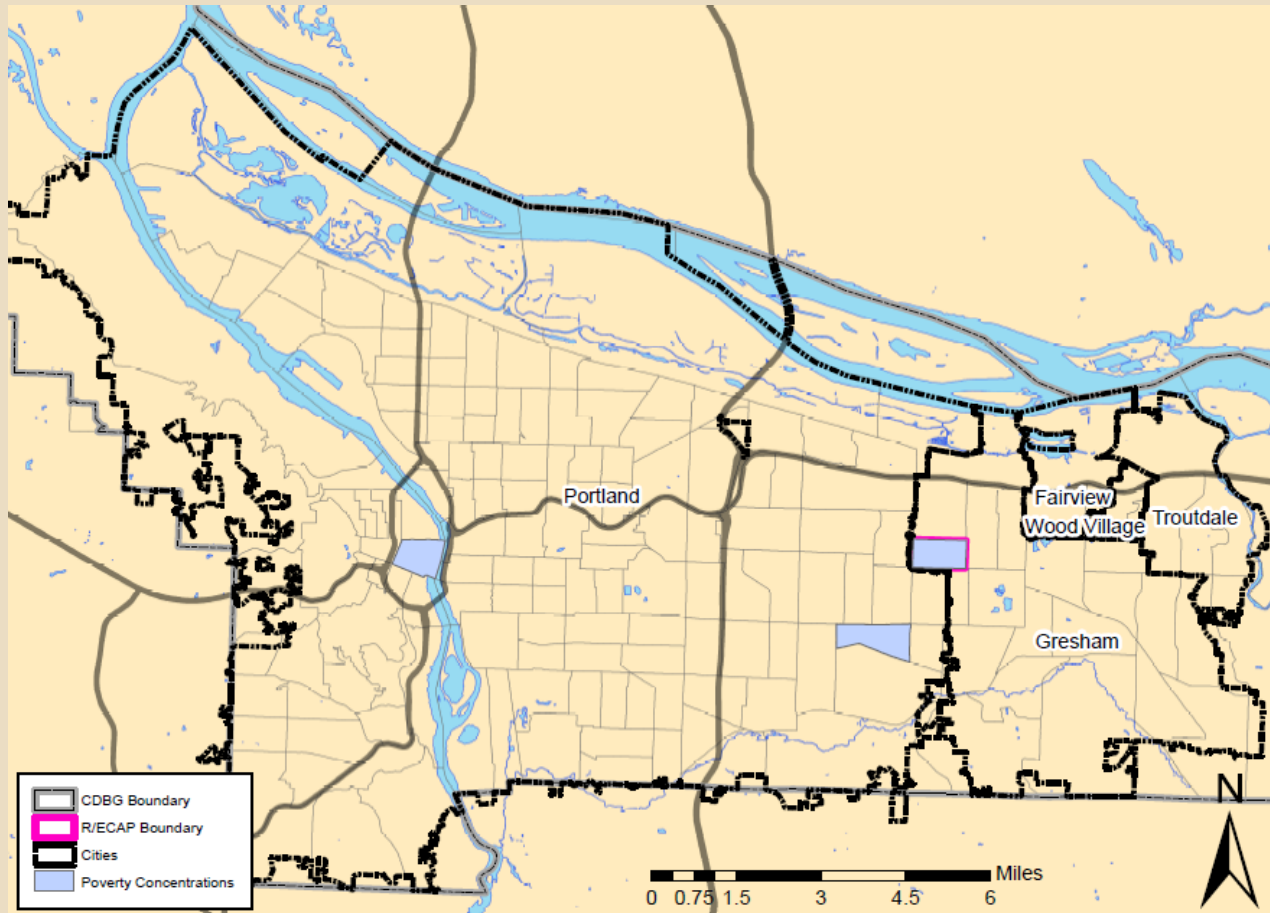
R/ECAP Race/Ethnicity	Gresham/ Multnomah County	
	#	%
<b>Total Population in R/ECAPs</b>	5,567	
White	3,573	64.18%
Black	249	4.47%
American Indian and Alaska Native	29	0.52%
Asia	400	7.19%
Native Hawaiian or Pacific Islander	190	3.41%
Some other Race	876	15.74%
Two or more Races	520	9.34%
Hispanic or Latino	1,999	35.91%
<b>R/ECAP Family Type</b>		
Total Families in R/ECAPs	1,183	
Families with Children	706	59.68%
<b>R/ECAP National Origin</b>		
Foreign Born	2,194	39.41%

Source: 2013 American Community Survey 5-Year Estimates -DP02

# More than 50% Minority Concentrations in MC, 2013



# Poverty Concentrations (More than 50% Poverty Rate), 2013





# DISSIMILARITY INDEX





# Dissimilarity Index

---

- Measure of segregation
- Measure how two groups are distributed differently within an area
- African American segregated from the rest of population or how foreign-born people are distributed differently from native-born people, etc
- Allows comparison between areas and over time
- Index varies from 0 to 100 (Fully Integrated to Fully Segregated)

# Dissimilarity Index (1990 – 2010)

Racial/Ethnic Dissimilarity Index	Year	Gresham		Portland		Balance of Multnomah County		Portland-Vancouver-Hillsboro MSA	
		Index	Rating	Index	Rating	Index	Rating	Index	Rating
Non-White/White	1990	10.38	Low	33.54	Low	11.98	Low	28.76	Low
	2000	22.02	Low	26.78	Low	21.44	Low	27.82	Low
	2010	26.93	Low	31.39	Low	29.59	Low	31.79	Low
Black/White	1990	18.99	Low	65.23	High	22.32	Low	63.52	High
	2000	22.05	Low	52.08	Moderate	30.18	Low	47.49	Moderate
	2010	36.04	Low	45.96	Low	37.72	Low	48.59	Moderate
Hispanic/White	1990	17.96	Low	21.69	Low	18.64	Low	25.72	Low
	2000	31.05	Low	29.78	Low	30.49	Low	34.24	Low
	2010	30.96	Low	34.91	Low	35.47	Low	37.13	Low
Asian or Pacific Islander/White	1990	12.78	Low	21.82	Low	19.76	Low	31.31	Low
	2000	18.74	Low	21.63	Low	25.23	Low	31.87	Low
	2010	29.85	Low	32.17	Low	27.95	Low	38.00	Low

# Gresham and Portland (DI)

<b>Racial/Ethnic Dissimilarity Index</b>	<b>Year</b>	<b>Gresham</b>	<b>Rating</b>	<b>Portland</b>	<b>Rating</b>
<b>Black/White</b>	1990	18.99	Low	65.23	High
	2000	22.05	Low	52.08	Moderate
	2010	36.04	Low	45.96	Low

# DETERMINANTS OF SEGREGATION



# Determinants of R/ECAP and Segregation

- Political Factors
- Economic and Market Factors
  - ▣ Increased rents
  - ▣ Major private investments
  - ▣ Income and employment changes
  - ▣ Land use and zoning laws (minimum size lots, height limits, bedroom limits, etc.)
- Governmental Policies
  - ▣ Urban renewal area and TIF policies, etc.
- Housing and Real Estate Practices
  - ▣ Residential real estate steering etc
  - ▣ Foreclosure patterns
- Regional and Demographic Changes

# HOUSEHOLDS IN ASSISTED HOUSING

# Publicly Supported Housing

- Housing provided for low-income people, subsidized by public funds:
  - Traditional Public Housing Units
  - Project Based Section 8 Units
  - Other Multifamily Units
  - Housing Choice Voucher Program

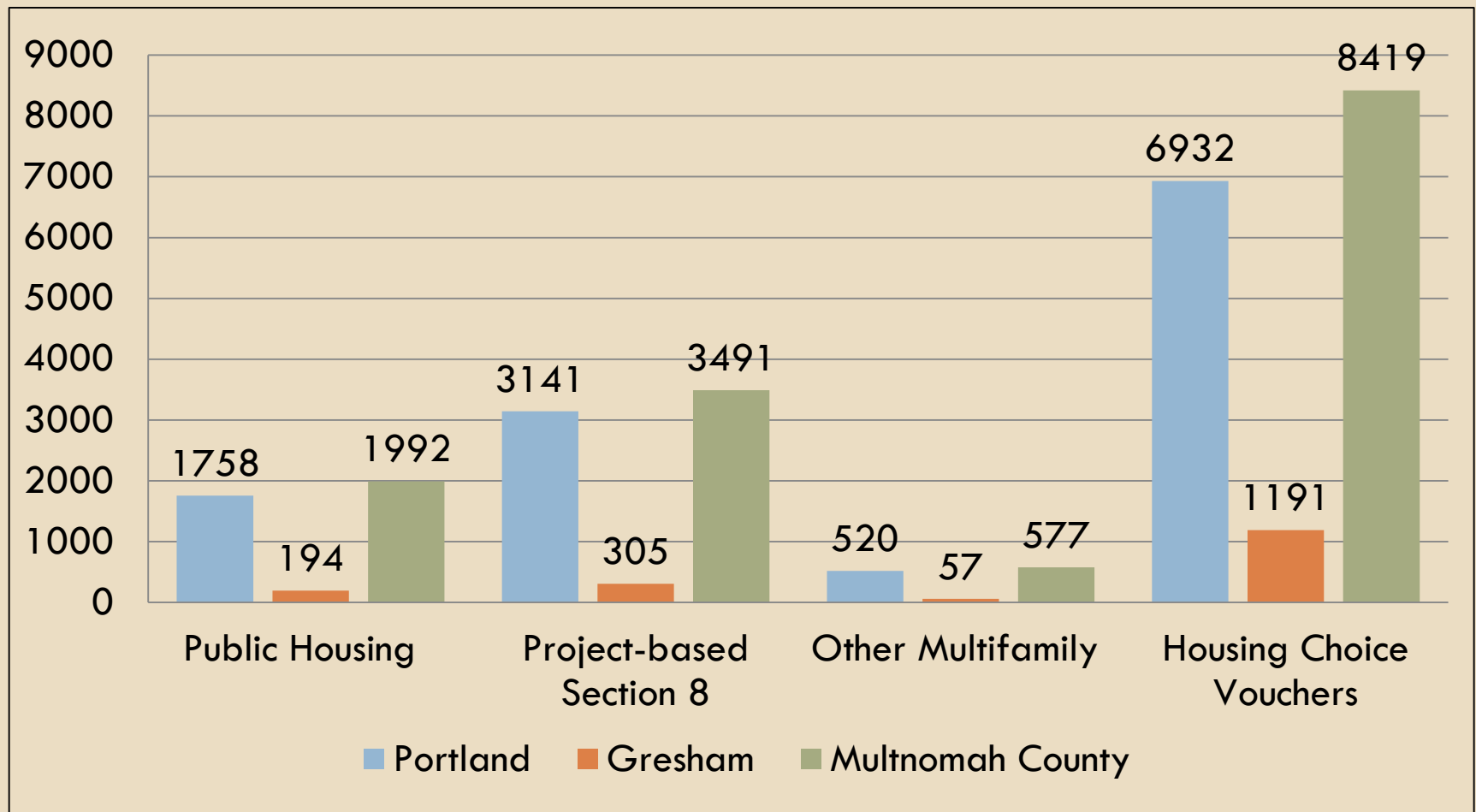




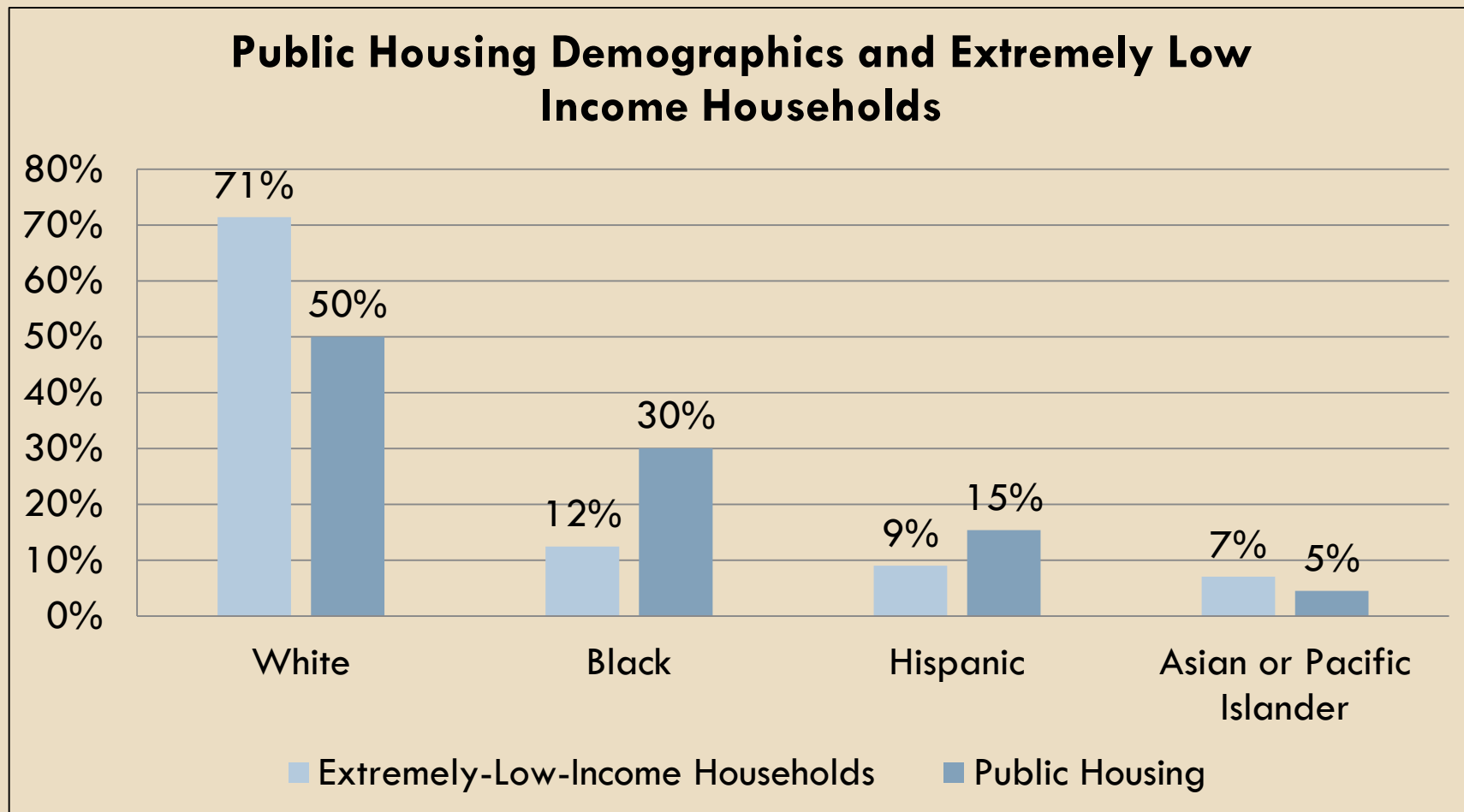
# Publicly Supported Housing

	<b>Portland</b>	<b>Gresham</b>	<b>Multnomah County</b>
<b>Total Housing Units</b>	264,881	39,028	323,890
<b>Publicly Supported Housing Units</b>	12,351	1,747	14,479
<b>% of Total Units</b>	5%	4%	4%

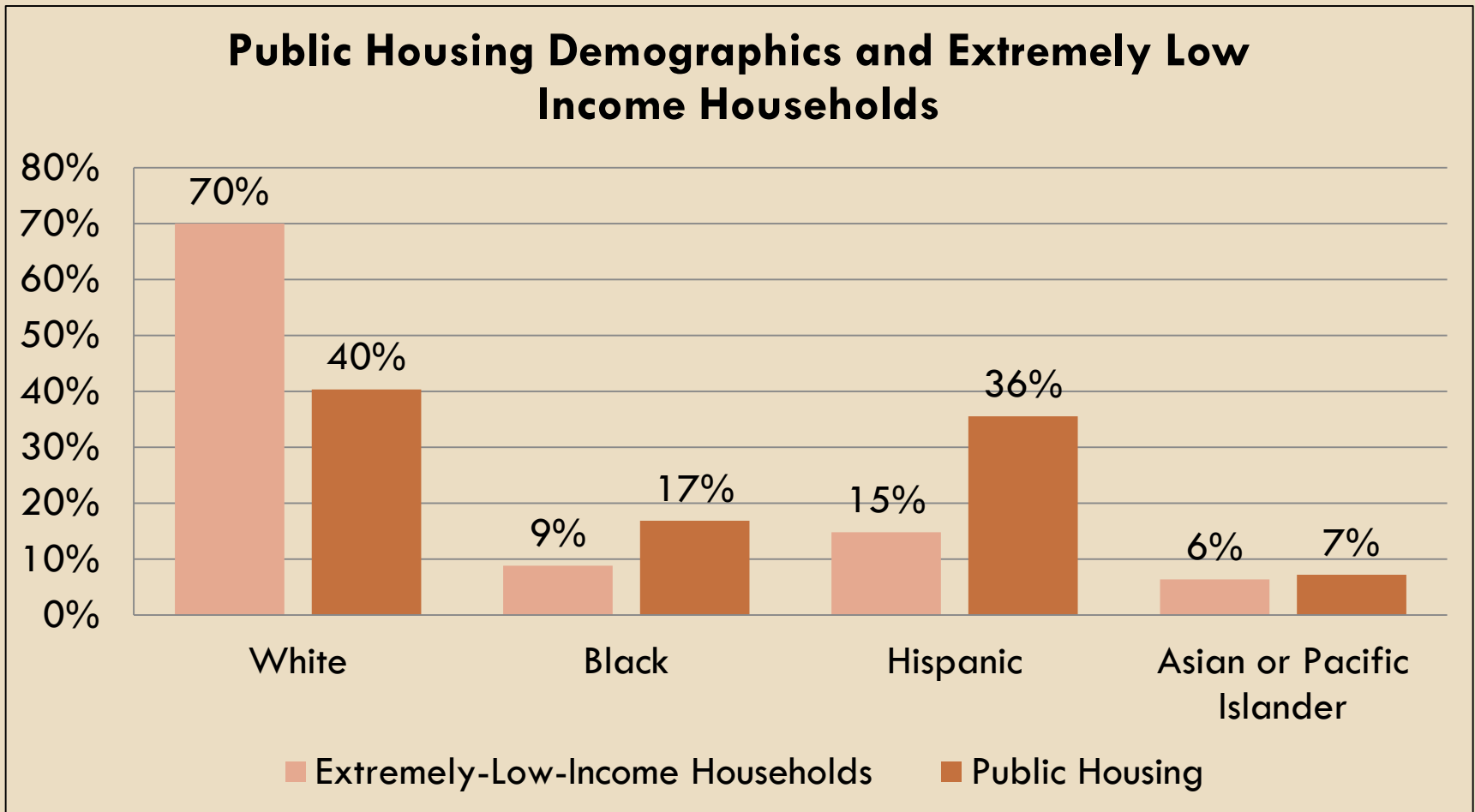
# Publicly Supported Housing



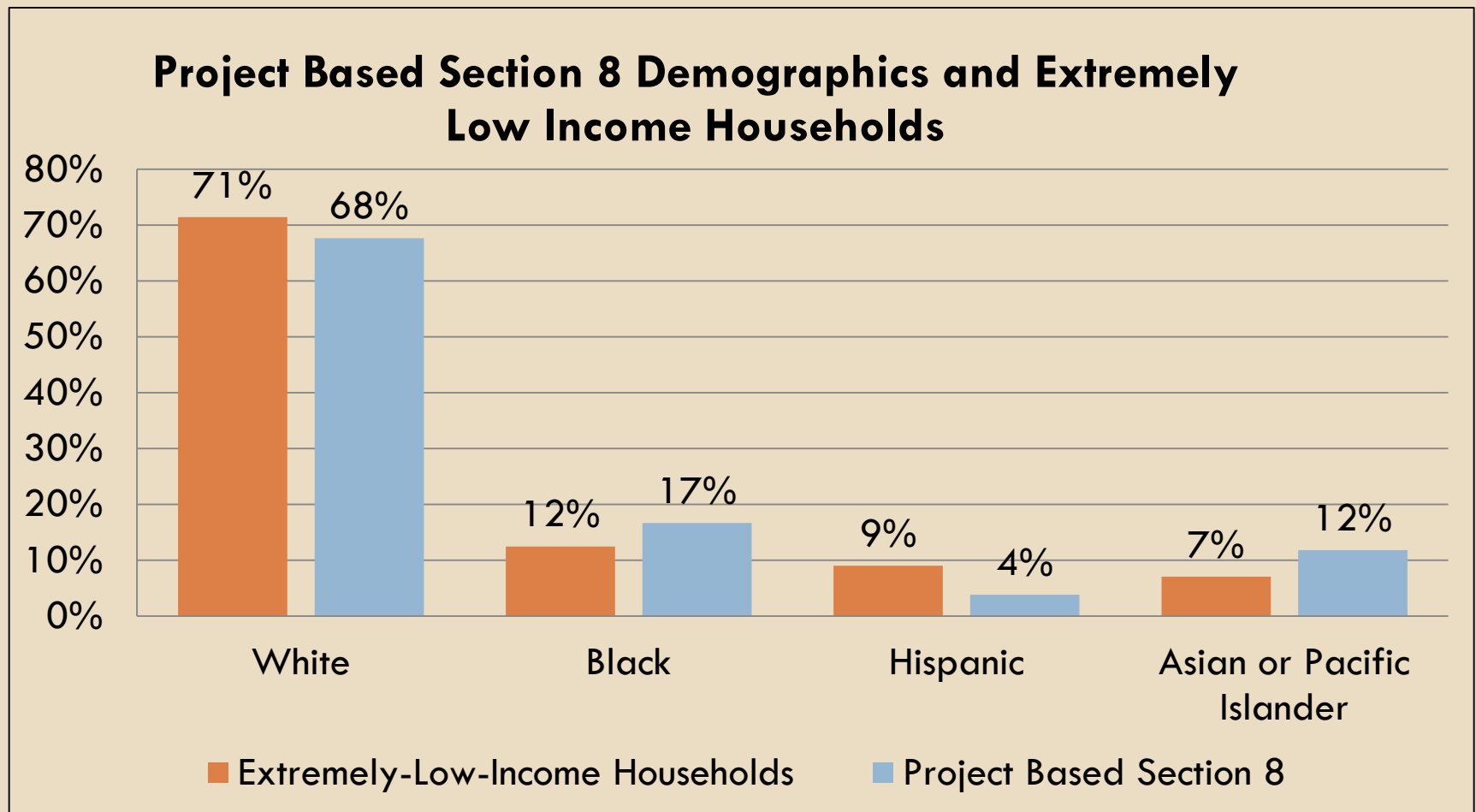
# Public Housing Demographics



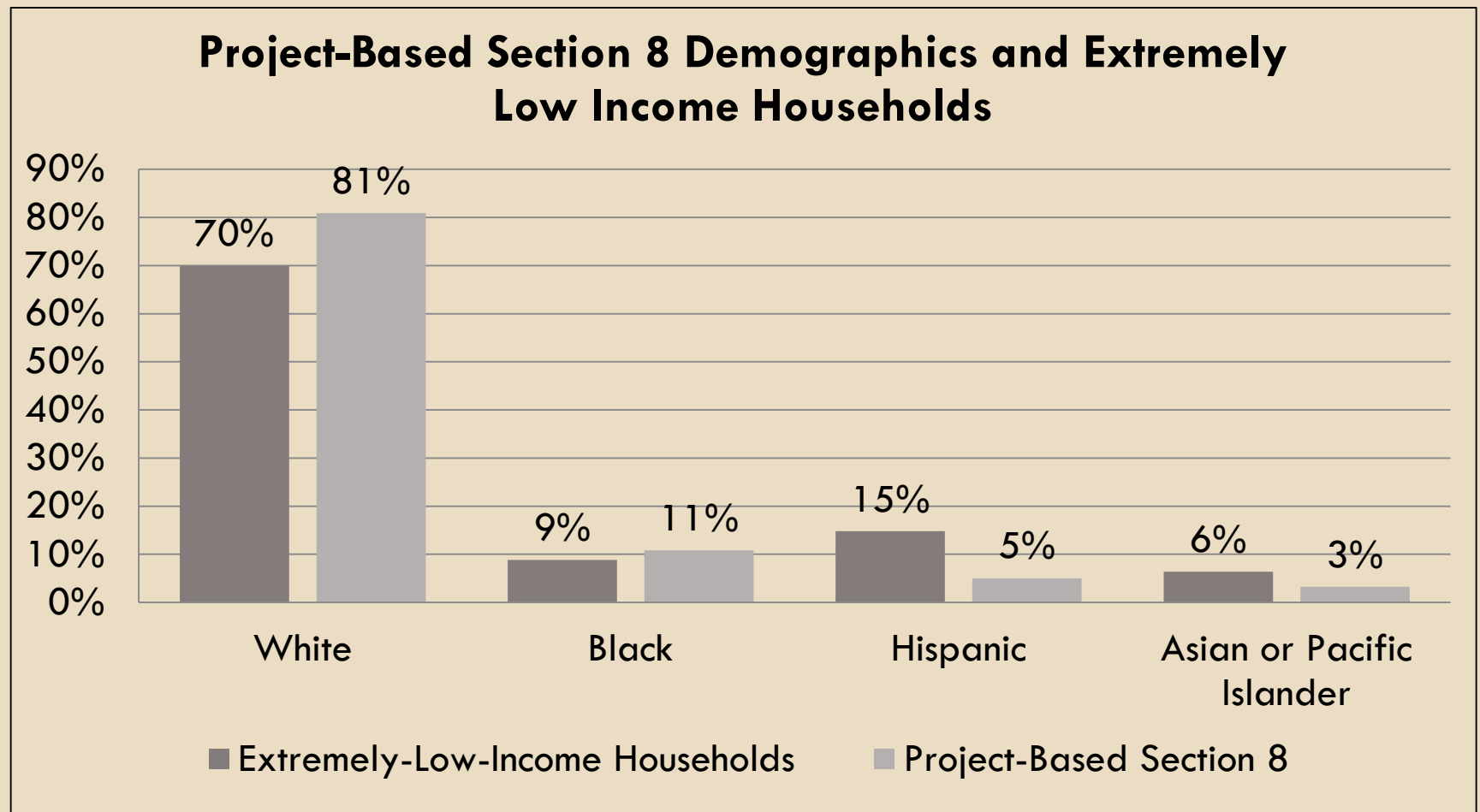
# Public Housing Demographics: Gresham



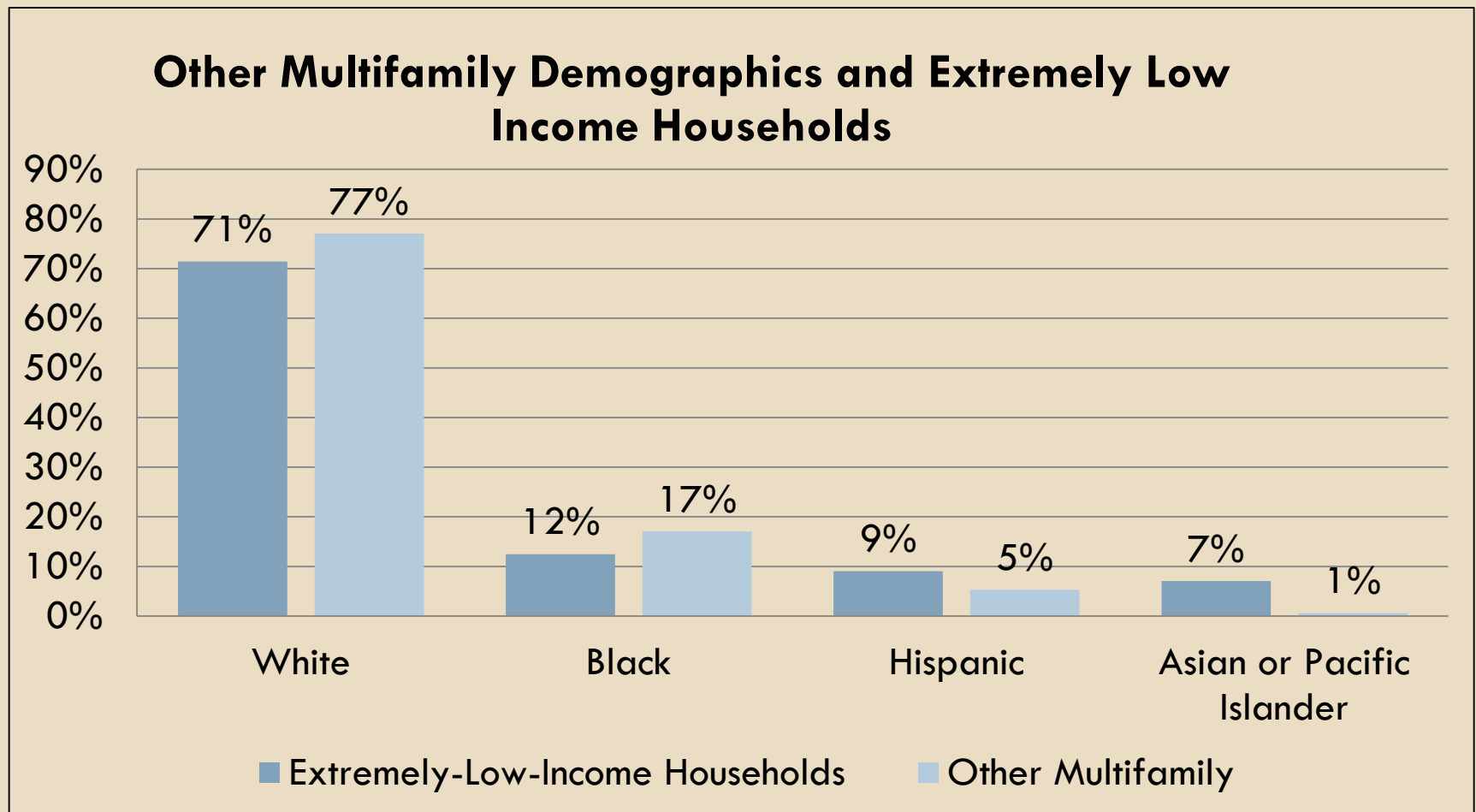
# Project Based Section 8 Demographics:



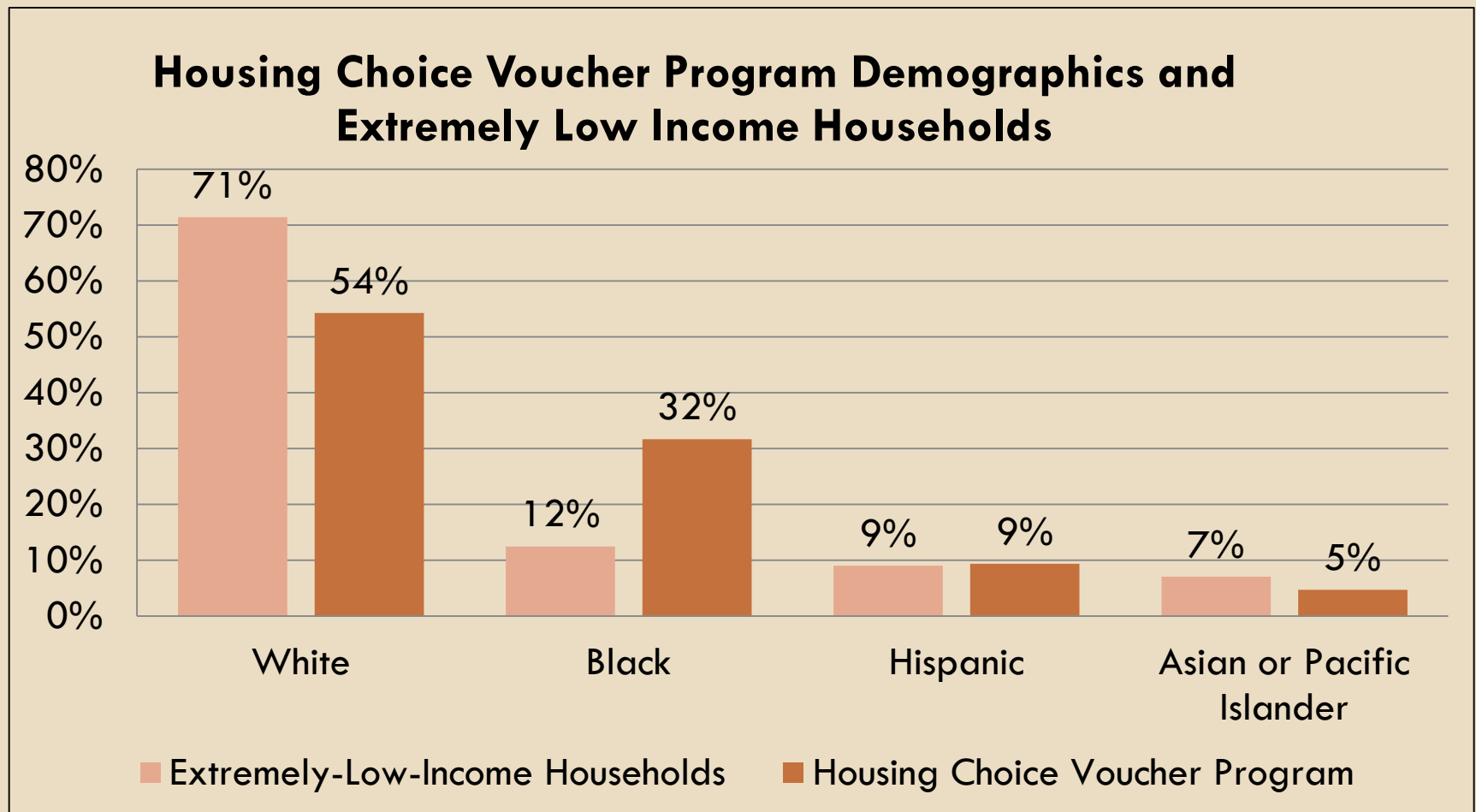
# Project Based Section 8 Demographics: Gresham



# Other Multifamily Demographics



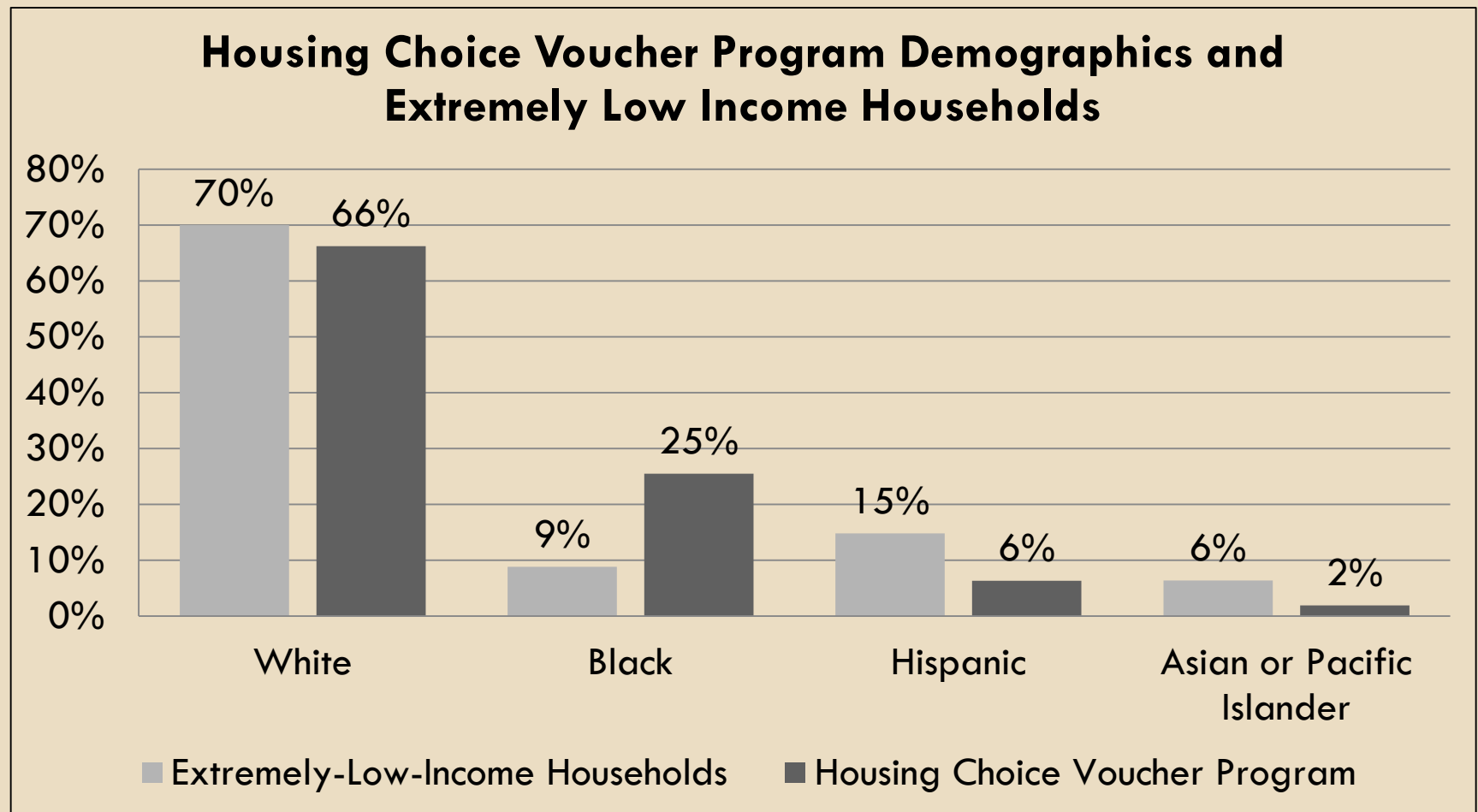
# Housing Choice Voucher Program Demographics



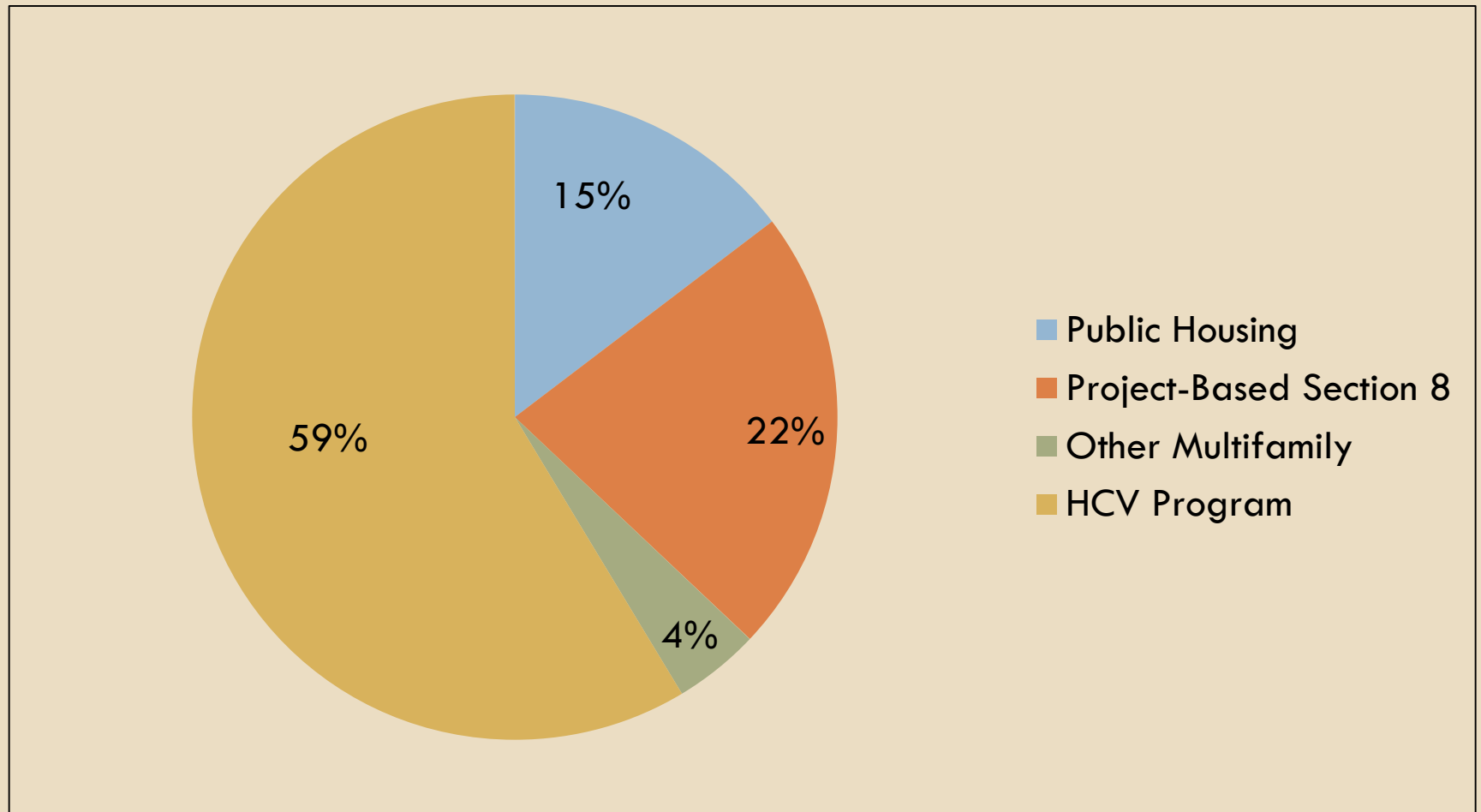


# Housing Choice Voucher Program

## Demographics: Gresham



# Disability by Public Housing Type



# Summary and Next Steps:

## Meeting #2

1. Housing location, problems and disproportionate housing need
2. Disability and Access
3. Indices(Indicators of Access to Opportunity)
4. Fair Housing Compliance and Infrastructure
5. Fair Housing Goals and Priorities