



**Community & Economic Development Discussion  
N/NE Housing Strategy Community Oversight Committee  
Thursday, January 14**

# Change in Interstate Budget & Forecast

	Actuals FY 2000-01 through FY 2006-07	(Beginning of Set Aside) Actuals FY 2006-07 through FY 2014-15	Five-Year Forecast FY 2015-2016 through FY 2019-20	Forecast until end of life of URA FY 2015-16 through 2024-25	Total Actual + Forecast
<b>Interstate – Status Quo (Adopted Budget/Forecast with Add'l \$20M over next five years)</b>					
Direct Housing Expenditures	1,810,650	32,308,922	41,924,648	66,151,019	100,270,591
Set aside TIF Percent	N/A	33%	35%	39%	40%
PDC Program Dollars	36,627,009	56,997,292	35,400,336	90,836,344	184,460,645
<b>Interstate - Revised (Updated Budget/Forecast with 70% Set Aside)</b>					
Direct Housing Expenditures	1,810,650	32,308,922	71,724,648	104,112,390	138,231,962
Set aside TIF Percent	N/A	33%	71%	70%	55%
PDC Program Dollars	36,627,009	56,997,292	36,164,145	52,874,973	146,499,274
Change in Set Aside	-	-	29,800,000	37,961,371	37,961,371

# Policy Context



Neighborhood Economic Development

**VISION:**

Portland is one of the most globally competitive, healthy & equitable cities in the world.



# Objective 1: Healthy, Complete Neighborhoods

## Strategic Initiatives

- Applied equity-focused commercial corridor investment approach; increased grants to People of Color from 40% in FY 11/12 to 58 % in FY 14/15
- Completed: Martin Luther King Jr. Blvd Gateway Improvement, Heritage Markers , Jefferson Frontage Improvements, Dawson Park Renovation
- Finalized Community Benefits Agreement (CBA) for Natural Grocers project
- Supported June Key Delta Center & installation of Chris Poole-Jones Memorial



# Objective 1: Healthy, Complete Neighborhoods

## In progress

- Phase II Killingsworth Streetscape Improvements
- Lombard Investment Strategy
- Argyle Development Plan



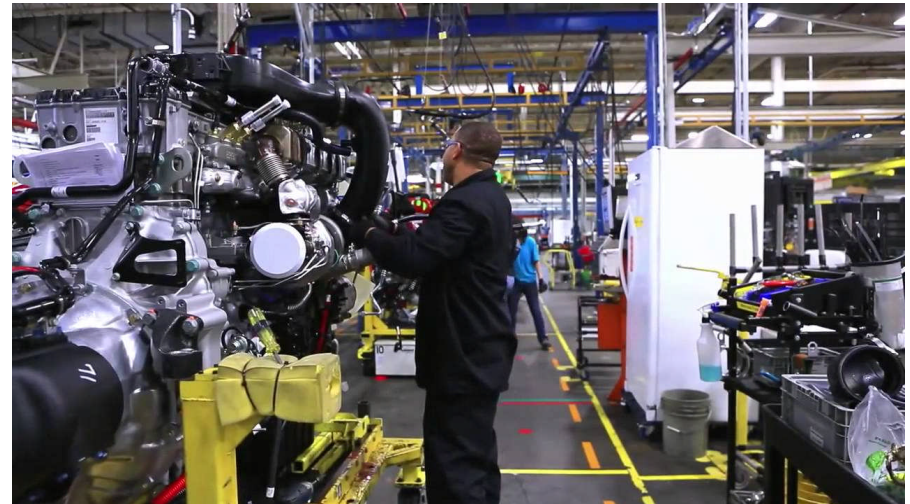
## Objective 2. Access to High Quality Employment

### Strategic Initiatives

- Supported Daimler Trucks new headquarters on Swan Island; created 400 new quality jobs; established customized Public Benefit Agreement
- Created opportunities with N/NE companies enrolled in the E-Zone Program; 981 full-time jobs; \$25/hour average wage; \$700M private investment; 27 public benefit agreements;
- Co-invested workforce development funds to serve approximately 1500 youth and adults each year through 11 non-profits – including SEI, Oregon Tradeswomen/Constructing Hope, Open Meadow, POIC and NAYA

### In Progress

- Workforce navigator pilot



# Objective 3. Equitable Wealth Creation

## Strategic Initiatives

- Micro & Small Business Technical Assistance programs serve about 500 businesses per year; 67% business owners of color.
- Established Mini-Micro Loan with MESO; 71% of loans are to people of color.
- Provided support, technical assistance to 31 individual long-term property owners (LTPO).
- In FY 13-14, achieved 24% DMWESB utilization, 26% overall minority hours, and 22% apprenticeship diversity in PDC-funded construction projects
- Launched 'Inclusive Startup Fund' for diverse entrepreneurial high-growth startups



## Objective 4. 21<sup>st</sup> Century Partnerships

### Strategic Initiatives

- Provided capacity building, technical and financial assistance to NPI and Main Street Network districts: Alberta, St. Johns, Cully & Our 42<sup>nd</sup> Ave
- In FY 2015-16 awarded \$670,203 to community-based organizations in N/NE: Boys & Girl Club Portland Metro \* Cascadia Behavioral Healthcare, Inc. Oregon Tradeswomen, Inc. \* MESO \* Habitat for Humanity \* North by NE Community Health Center \* Po'Shines Café

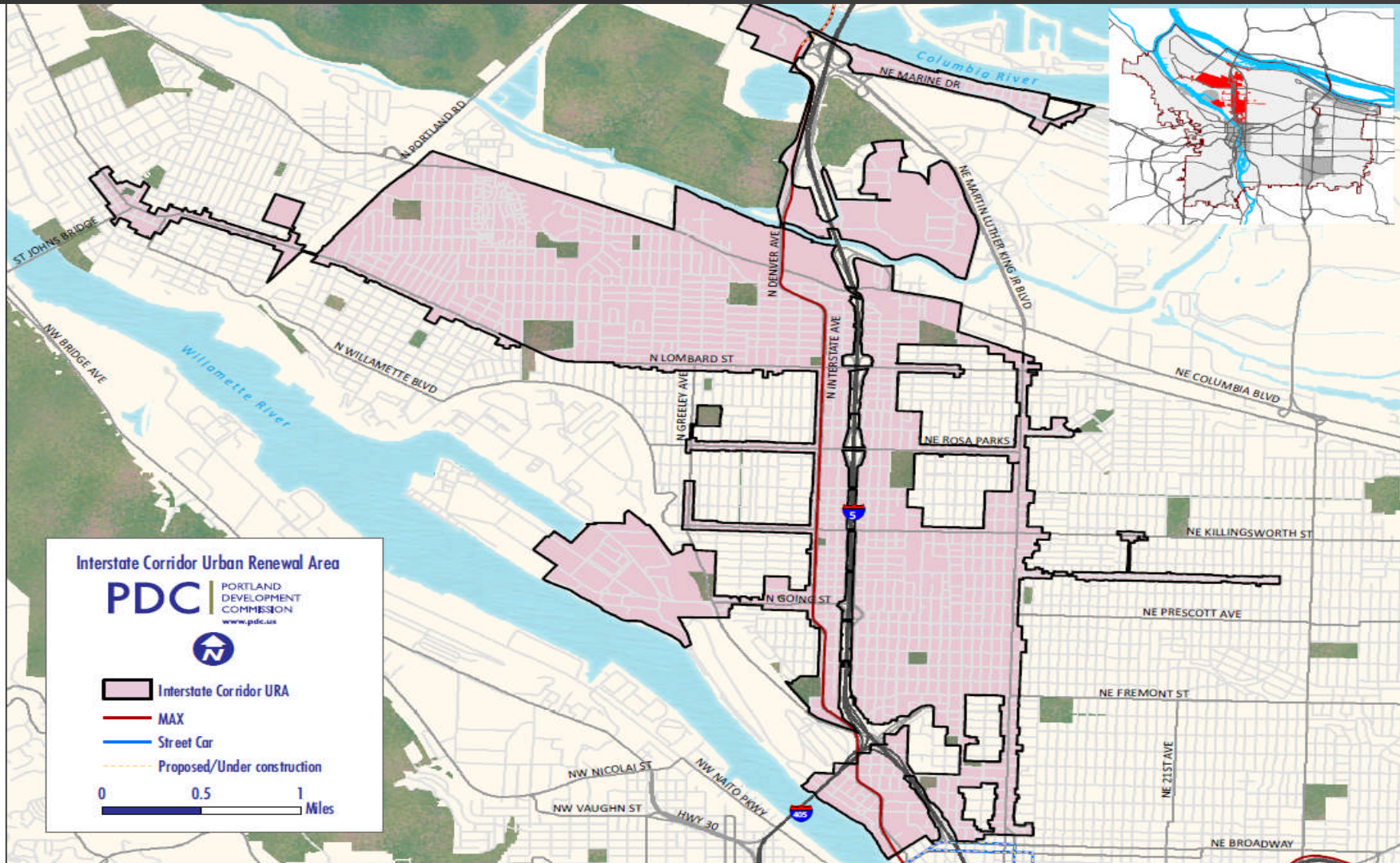
### In Progress

- Organizational development: BICEP and N/NEBA





# Map of Investments



Care was taken in the creation of this map, but it is provided "as is." The Portland Development Commission cannot accept any responsibility for errors, omissions, or positional accuracy, and therefore, there are no warranties that accompany this product. January 2012.

[Recent PDC Activities](#)

# Discussion Topics

- What are the top economic development, community development priorities?
- How should we solicit input on priorities and support community-led, community-driven process?
- What opportunities exist for PDC/PHB alignment?