



Oregon Solutions: Lents Stabilization and Job Creation Collaborative



Planning & Development Directors | May 2017 Update

Marie Walkiewicz, Bureau of Environmental Services

Jacob Sherman, Portland Housing Bureau



Overview and update

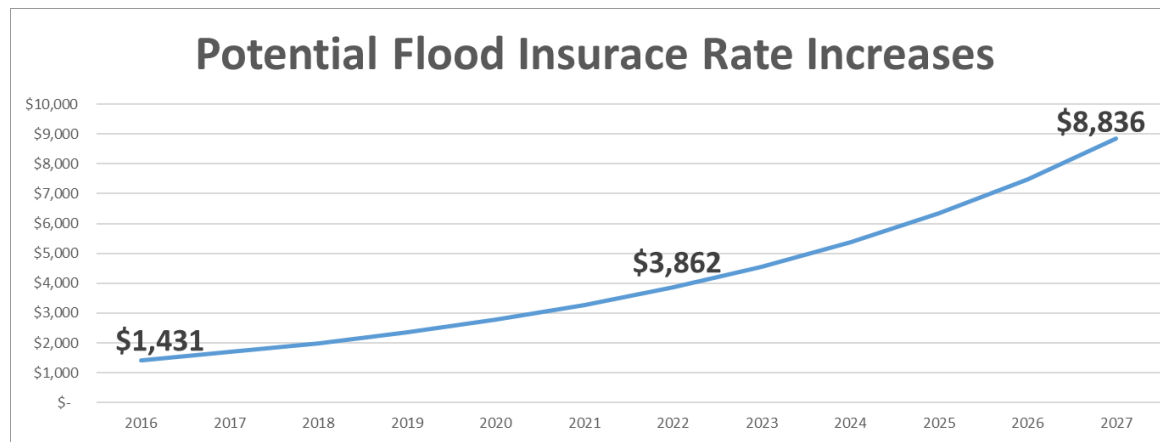
- Impact of flooding
- Oregon Solutions designation
- Progress report
- On the horizon





Impacts of flooding

- Foster Road flooding every 6-8 years
- ~ 700 households in the floodplain
 - Strong homeownership
 - Lower per-capita income
 - Higher immigrant population
- Decreased property values and rapidly increasing flood insurance; concerns over displacement
- ~ 75 acres of industrial land in floodplain; another 100 acres affected

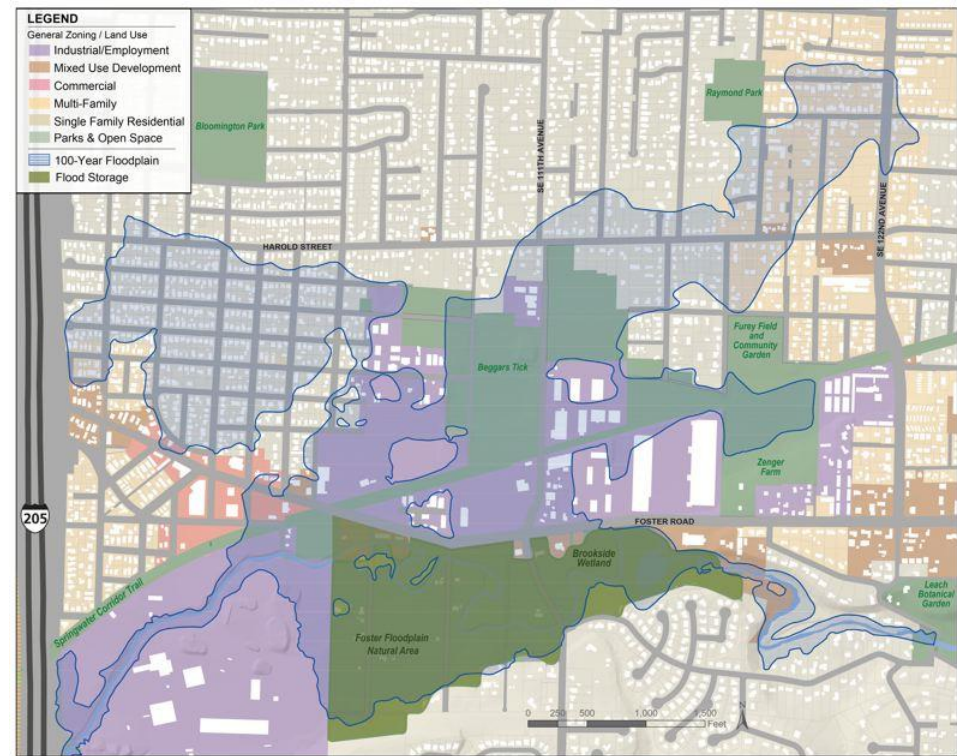


Projected rate increases for a typical annual premium. Assumes no changes to federal policy and an annual increase of 18%.

The call for action is well-documented

Impacts of flooding have been identified in the:

- Johnson Creek Restoration Plan (2001)
- Portland Plan (2012)
- Foster-Lents Integration Partnership (2013)
- Lents 5-Year Action Plan (2014)
- Climate Action Plan (2015)
- Lents Strong Action Plan (community-led, 2016)



Portion of 100-year floodplain in Lents and Powellhurst-Gilbert neighborhoods



Oregon Solutions

Designated by Gov. Kate Brown in 2016

An integrated approach:

- Flood mitigation
- Neighborhood stability
- Job creation on industrial lands
- Governance and implementation

Participants:

- Elected and appointed officials
- City and state agencies
- Private-sector partners
- NGOs and the community





Progress to date

- PSU and Green Lents surveyed 100+ homeowners
- US Army Corps cost/benefit analysis on risk abatement measures
- Researched flood insurance costs
- Expanded PHB's assistance to homeowners in Lents
- Grant submittal to Meyer Memorial Trust to stabilize homeowners
- Ongoing Willing Seller acquisition to purchase property for restoration and flood mitigation





On the horizon

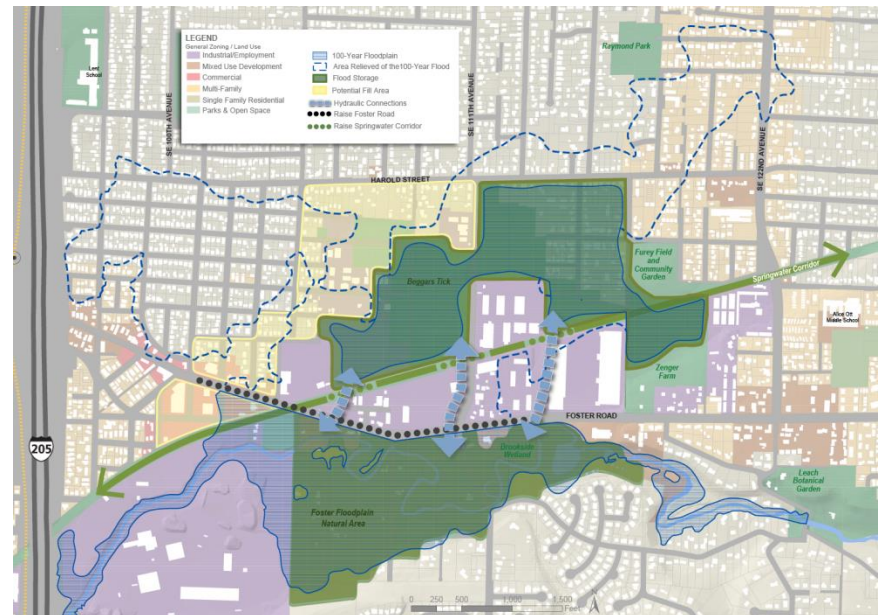
- Submit Metro 2040 Planning and Development Grant (formerly CET):
 - Linking Equitable Housing with Environmental Restoration
- Life in the Floodplain community event
- Launch Home Resilience Pilot Program this summer
 - Combine home repair assessments, flood mitigation assessments, and elevation surveys for 20-40 low income homeowners
- Industrial and employment lands inventory; existing conditions and market analysis





On the Horizon

- Begin development of long-term strategies:
 - Districtwide fill and restoration tool
 - Anti-displacement measures
 - Industrial and employment redevelopment
 - Next steps & long-term governance
- Potential budget requests
 - Scale up pilot program, if successful
 - Other outreach and planning activities
- Future updates to P&D



Thank you. Any Questions?