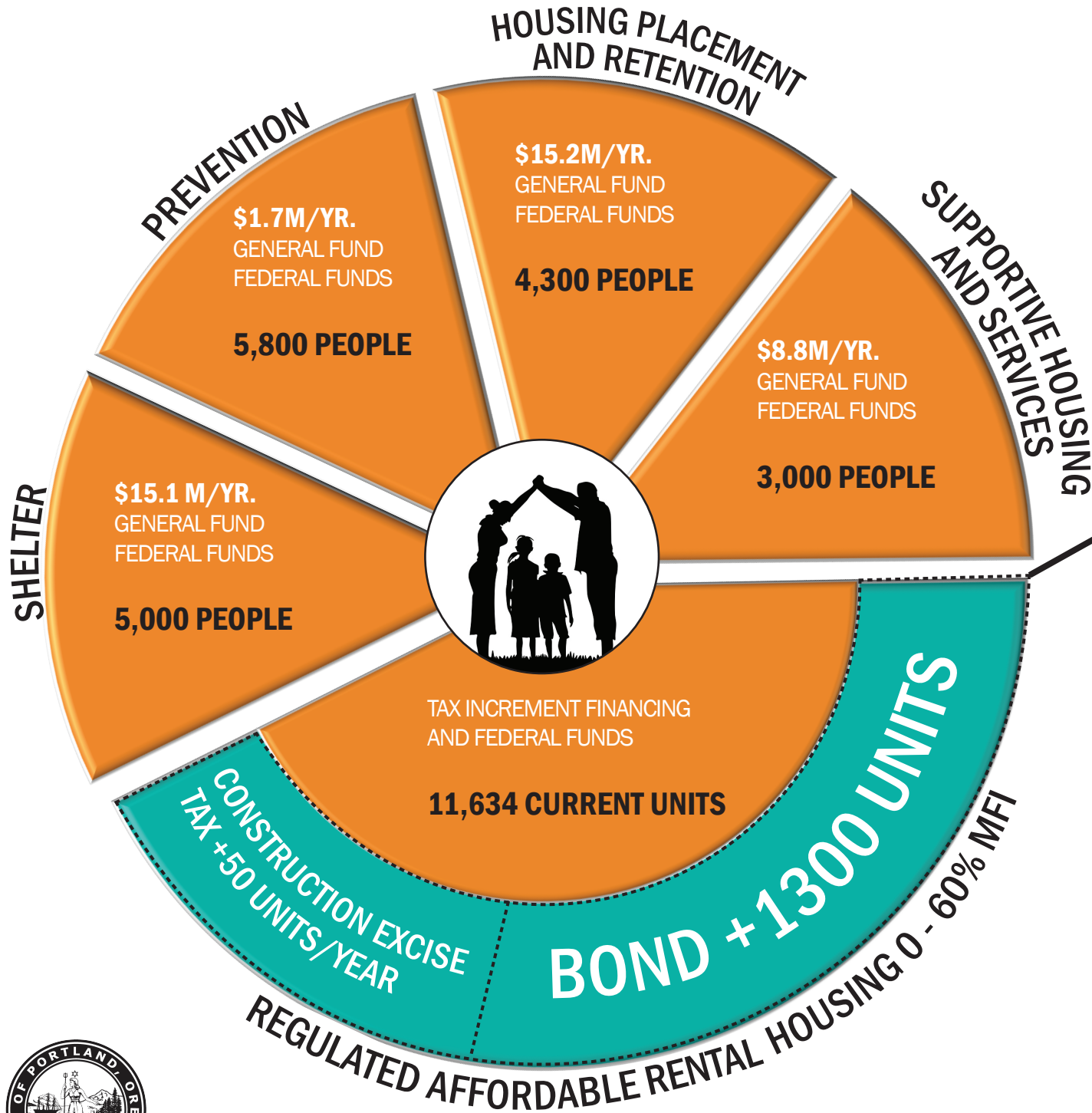


THE ELEMENTS OF HOUSING STABILITY

BOND FUNDING IMPACTS ON CITY PROGRAMS & SERVICES



\$258.4 MILLION BOND FUND

- **1,300** MORE AFFORDABLE HOMES SERVING PORTLANDERS AT OR BELOW 60% MEDIAN FAMILY INCOME (MFI)
- **600** UNITS AFFORDABLE AT 0 - 30% MFI – **25%** INCREASE IN THE EXISTING INVENTORY
- BOND FUNDED HOUSING WILL REMAIN AFFORDABLE PERMANENTLY

MEDIAN FAMILY INCOME (MFI)

	30%	60%	100%	
HOUSEHOLD SIZE	1	\$15,400	\$30,840	\$51,310
	2	\$17,600	\$35,220	\$68,640
	3	\$19,800	\$39,600	\$65,970
	4	\$22,000	\$43,980	\$73,300

