

North Burlington Ave. & Edison St. Local Improvement District Formation Hearing

June 7, 2017 - Agenda Item #618

WE KEEP PORTLAND MOVING.



PBOT
PORTLAND BUREAU OF TRANSPORTATION

Staff presenting: Andrew Aebi, LID Administrator

Photos taken on April 28, 2017 (slides #2, #3 #4) and on May 13, 2017 (slides #7 and #8)

N. Edison Street at Leavitt Avenue

Looking East



N. Edison Street at Leavitt Avenue

Looking West



N. John Avenue at Edison Street

12% Slope Looking South to N. Decatur Avenue



Recap of Proposed Amendment

Street vacation of North John Avenue:

Tabled due to existing water main and to allow for more robust street, sidewalk and stormwater improvements on N. Edison Street.

Project length:

Nearly doubled from 460 feet to 880 feet; leaves no sidewalk gaps from N. Burlington Ave. to N. Richmond Ave.

Remonstrance level:

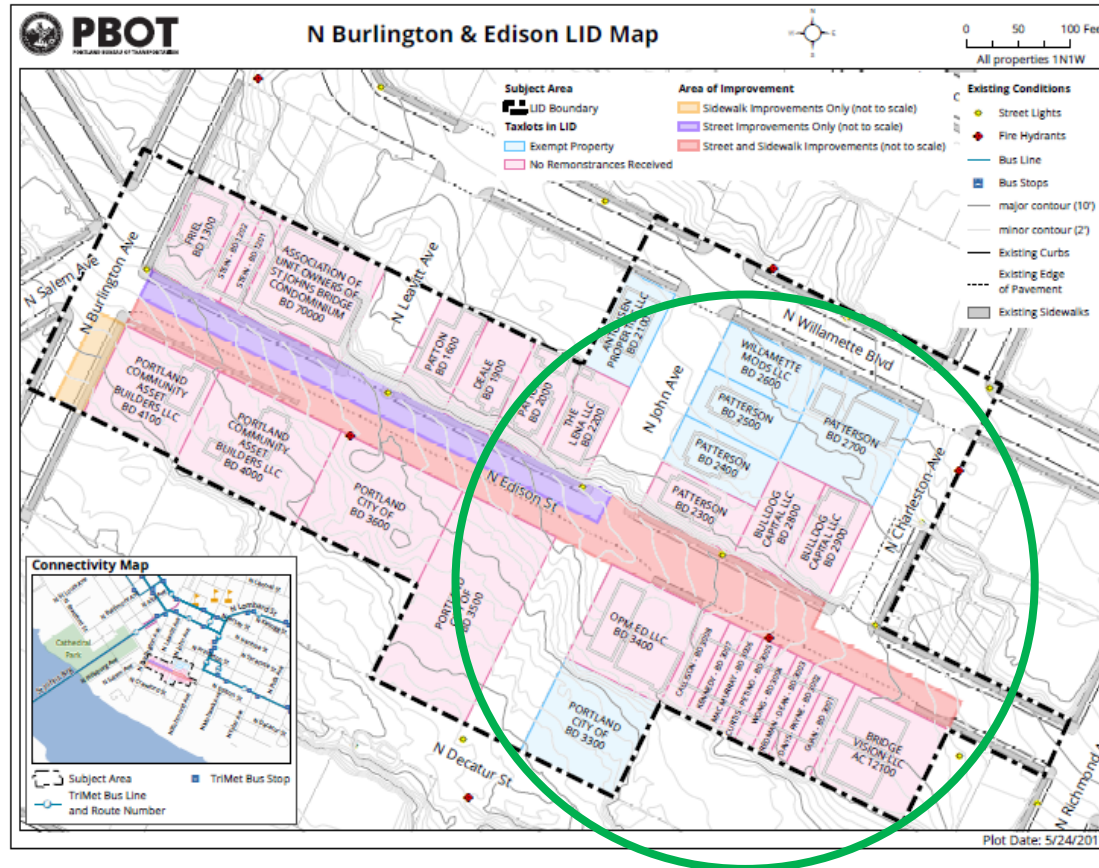
No remonstrances received.

Objections from owners of property with waiver of remonstrance:

Two (2) objections represent 5.1% of increased amount of LID (\$681K) or 2.3% of overall amount of expanded LID (\$1,501K).

N. Burlington Ave. & Edison St. LID

Project Map Including Proposed Expansion (Circled)



8320-8334 North Edison Street

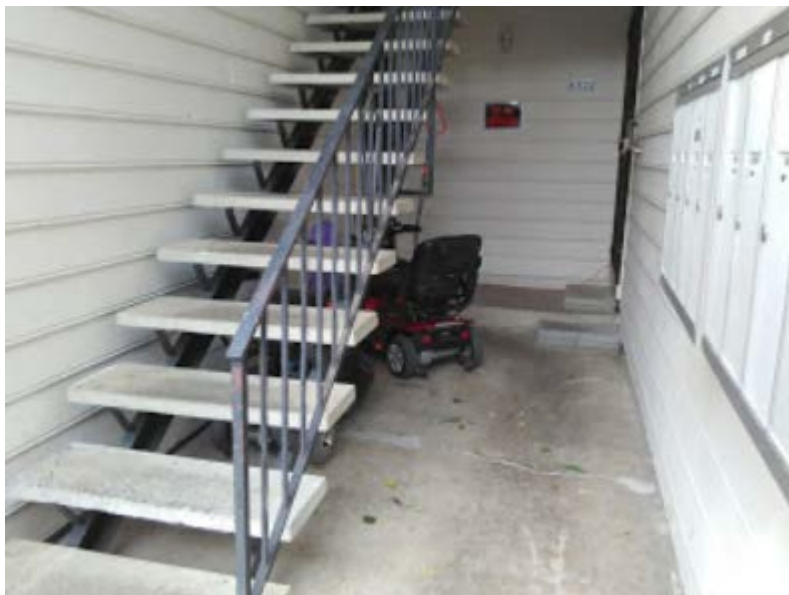
Adverse Drainage Impact from Neighboring Properties



In June 2012 rain water and debris flooding from the street overwhelmed the 36" storm drain in the middle of our parking lot. The rising water overwhelmed the 6" drain at the bottom of the laundry room stairs, continued into the laundry room, overwhelmed the 4" laundry room drain, and then flooded the lower dwelling unit. Over 500 square feet of laminate flooring installed 3 months earlier were destroyed. Replacement cost was roughly \$2000. That incident has made me very cautious about making improvements to the lower apartments in the future.

8320-8334 North Edison Street

Improving Access for Mobility-Impaired Residents



My wife and I have owned the 10 unit apartment building located at 8320 – 8338 North Edison since 1997. Our tenant base consists of several very long term tenants (32 years, 20 years, and 10 years) who have a variety of disabilities that make walking difficult. Two of those tenants have scooters they use for mobility.