

EXHIBIT A

188467



#1

**Primary South Paddock:
Approximately 255,000
square feet**

- Pulverize, cement treat 5% at 12", grade, compact and pave 4" asphalt in two lifts.

#2

**"Skid Pad" Section in
front of Pro Drive
School: Approximately
61,000 square feet**

- Pulverize, cement treat 5% at 12", grade, compact and pave 4" asphalt in two lifts.

#3

**"Final section of entry
road after 2nd speed
bump to Beaches area":
Approximately 20,625
square feet**

- Pulverize, cement treat 5% at 12", grade, compact and pave 4" asphalt in two lifts.

#4

**"PIT IN" area just off of Turn 11 - Repair and Smooth:
Approximately 4,095 square feet**

- Pre-level existing, and cap with 2" asphalt.

#5

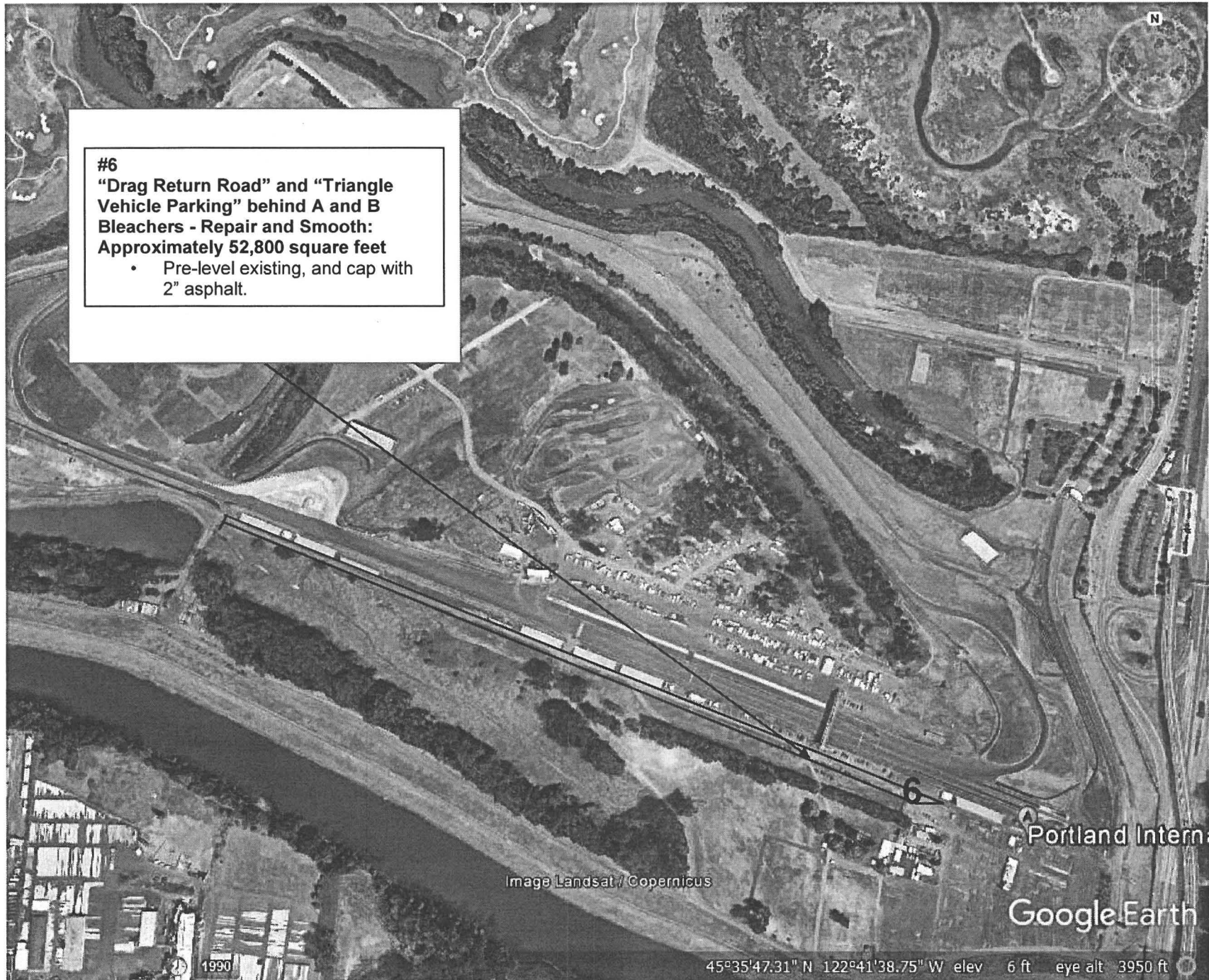
**"Between Drag Staging Lanes and Burn-out Boxes" -
Repair and Smooth: Approximately 2,208 square feet**

- Pre-level existing, and cap with 2" asphalt.

#6

**"Drag Return Road" and "Triangle
Vehicle Parking" behind A and B
Bleachers - Repair and Smooth:
Approximately 52,800 square feet**

- Pre-level existing, and cap with
2" asphalt.



188407