

# PARKS REPLACEMENT BOND

CITY COUNCIL – June 21, 2017



**Commissioner Amanda Fritz | Director Mike Abbaté**



**PORTLAND  
PARKS & RECREATION**  
Healthy Parks, Healthy Portland

# 7 Theme Areas

# 2014 Parks Replacement Bond

## \$68 million for repairs and replacements





# Phase I Projects



# Phase 2 Project List

## **APPROACH:**

- ✓ **Criteria**
- ✓ **Commitments**
- ✓ **Obligations**
- ✓ **Analysis**
- ✓ **Equity**
- ✓ **Short List**
- ✓ **Public Review Process**

# Phase 2 Proposed Projects

## PARKS REPLACEMENT BOND

ParksReplacementBond.org



### PROPOSED PHASE 2 PROJECT LIST (revised)

The Parks Replacement Bond was passed in November 2014 authorizing \$68 million in general obligation bonds for repair and replacement projects. The first Bond project list spent \$47.6 million of the Bond, the remaining \$20.4 million will be spent in Phase 2.

#### PROJECT CRITERIA FOR 2014 PARKS REPLACEMENT BOND

The projects for the first Bond project list and the potential projects for Phase 2 were identified as urgent needs and prioritized with the following criteria:

1. Investing in projects that are immediate safety concerns or urgent repairs (urgency = highest probability of failure x highest impact of failure)
2. Investing in projects that reduce bigger costs later on
3. Responsible repairs for general deferred maintenance needs
4. Investing in energy efficiency
5. Increasing accessibility for all
6. Restoring services that are currently closed

The following list describes what remains to fulfill the obligations of the original Bond language for each theme area and lists potential projects for Phase 2 of the Parks Replacement Bond. Phase 1 projects are currently underway.

SITE	PROPOSED PROJECT	DESCRIPTION
<b>PLAYGROUNDS</b> Replace or build 10 to 20 play structures that are closed, at risk of closure or deficient. At least \$5M for the life of the Bond.		
Accomplished by Bond Phase 1:		\$9M spent, 7 playgrounds
Required for Bond Phase 2:		3 playgrounds
Gabriel Park	Playground renovation	No accessibility. Playground design improvement needed. Adjacent to SW Community Center (SWNI)
* Gilbert Primary Park	Playground renovation	Some of the oldest equipment in the system (1966). Play equipment condition poor. Neighborhood park (EPNO)
* Glenhaven Park	Playground renovation	Some of the oldest equipment in the system (1977). Neighborhood park. More play pieces to be removed due to lead (CNN)
Other Playground renovations considered include: Argay (EPNO), DeWitt (SWNI), Hancock (CNN), Overlook (NPNS), Pier (NPNS),		
<b>PLAY PIECES</b> Replace play equipment that has needs repair and/or has tested positive for lead-based paint. Up to \$3M designated for Phase 2. A minimum of 30 parks will be completed.		
*	Repair or Replace Equipment: Albert Kelly, Argay, Berkeley, Bloomington, Colonel Summers, Flavel, Fulton, Hancock, Irving, Knott, Laurelhurst, Mt Tabor, Pendleton, Piccolo, Sewallcrest, University Park, Washington, Wilkes, Wilshire, Woodstock	
	Address Drainage and Replace Engineered Wood Fiber (ADA-Approved Wood Chips): Burlingame, Clinton, Harney, Patton Square, Peninsula, Pier, Portsmouth, South Park Blocks, Sunnyside School, Woodlawn	
<b>TRAILS &amp; BRIDGES</b> Preserve access to natural areas and open spaces by repairing bridges and trails (at least \$5M during the life of the Bond).		
Accomplished by Bond Phase 1:		\$3.9M spent
Required for Bond Phase 2:		\$1.26M
Foley-Balmer Natural Area	Replace Trail Bridge	Replacement bridge
Marshall Park	Replace Trail Bridge	Replacement bridge
Springwater Trail Bridge #140 (by Circle Ave / Powell Butte)	Replace Trail Bridge Decking	Replacement of bridge decking
Other Bridge Replacement candidates considered include: Springwater Bridge #141 (by Telford Rd, SE 242nd) and Springwater Bridge #53 (by Telford Road, SE 242nd). Both are in Gresham		

\* Indicates a Health/Safety/Environment (HSE) project

# Phase 2 Public Involvement

## **PUBLIC OUTREACH APPROACH**

- ✓ **6 Neighborhood Coalitions/Land Use Committees**
- ✓ **2 Town Halls**
- ✓ **Parks Board**
- ✓ **Budget Advisory Committee**
- ✓ **Bond Oversight Committee**
- ✓ **Portlanders Stand with Immigrants & Refugees**
- ✓ **Next Door, Twitter, Facebook, Web, Emails**
- ✓ **Signs, Comment Forms**

# Phase 2 Proposed Projects

## PARKS REPLACEMENT BOND

### PROPOSED PHASE II



PLAYGROUNDS



PLAY PIECE



ACCESSIBILITY



PIONEER  
COURTHOUSE  
SQUARE



POOL



URGENT REPAIRS



PROTECTING  
WORKERS



RESTROOMS



TRAILS + BRIDGES

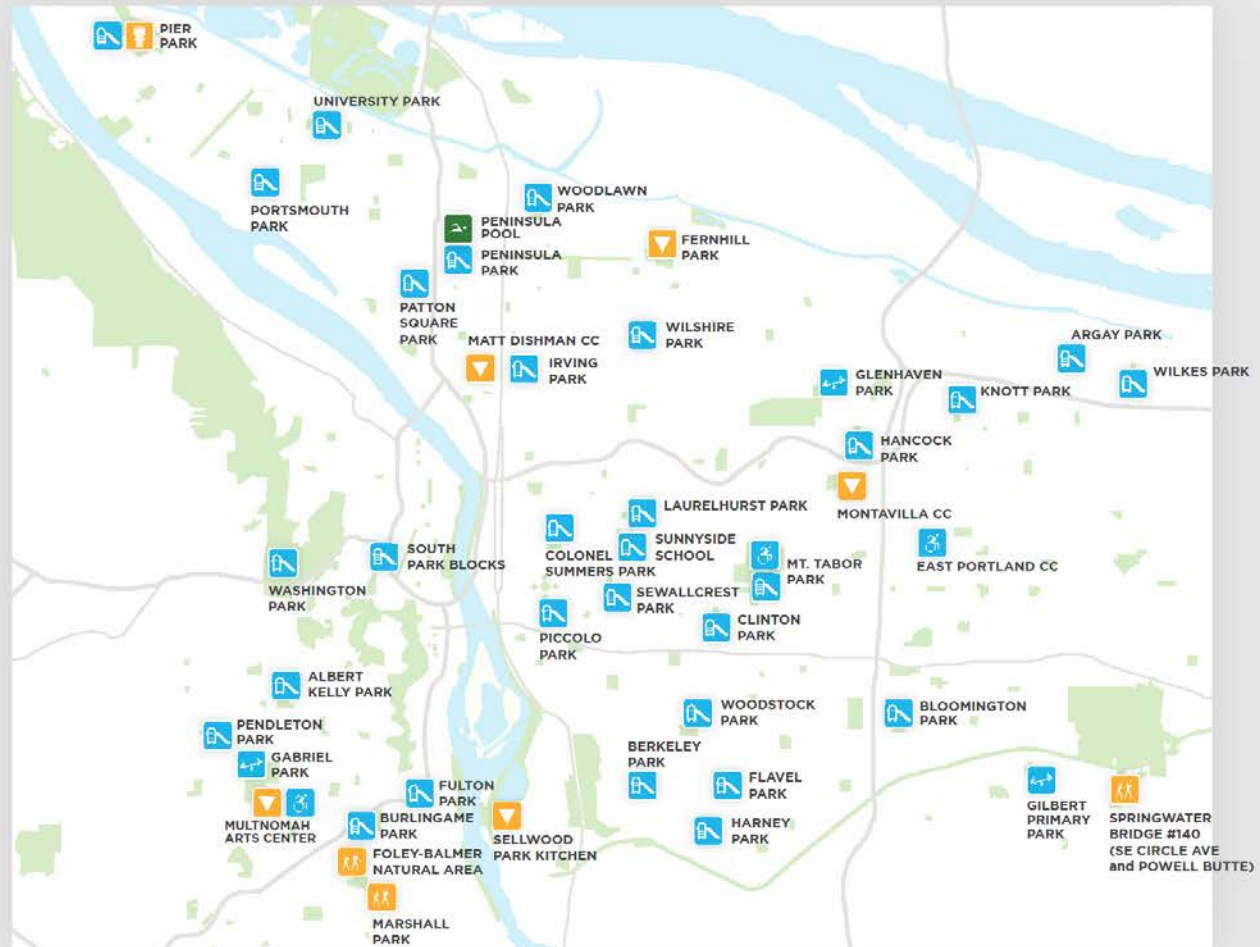
ADDITIONAL PARK SYSTEM EXPANSION PROJECTS  
(SDC, GRANTS, AND PARTNERSHIPS)

PLEASE NOTE THAT SOME BOND PROJECTS MAY HAVE  
LEVERAGED FUNDING (SDC, GRANTS, AND PARTNER-  
SHIPS) NOT DENOTED HERE.



PORTLAND PARKS & RECREATION™

Healthy Parks, Healthy Portland





# Bond Phase 2 List

## Playground Renovations

- 3 Playgrounds

Gilbert Primary Park



Gabriel Park



Glenhaven Park





# Bond Phase 2 List

## Play Piece Replacements

- 30 Playground Locations



Albert Kelly Park





# Bond Phase 2 List

## Trails and Bridges

- 3 Bridges



Marshall Park  
Bridge



Springwater Trail  
Bridge

Foley  
Balmer  
Bridge





# Bond Phase 2 List

## Pools

- 1 Peninsula Pool





# Bond Phase 2 List

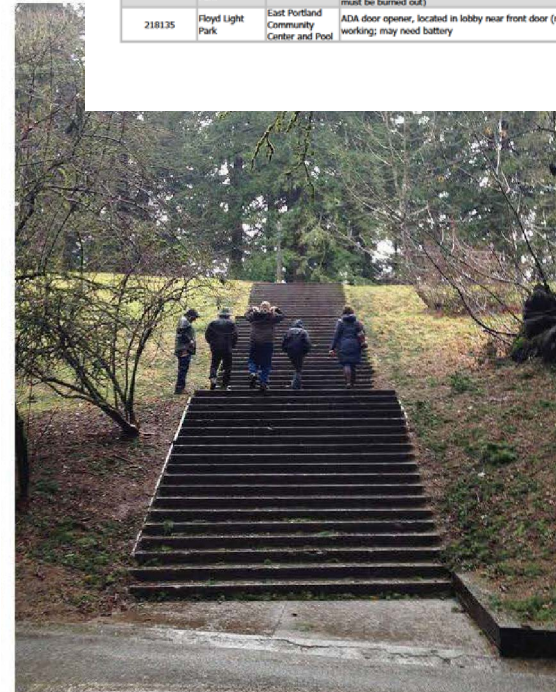
## Accessibility

- 3 Projects



Multnomah  
Arts Center

Mt. Tabor



East Portland  
Community  
Center

WO Number	Property	Asset	Description		Service	Location
239431	Floyd Light Park	Drinking Fountains	Fountain protrudes 11-1/2" from wall at 33-3/4" AFF (protrusion more than 4" must be mounted below 27" or above 80" req). Install wing wall. State Codes:---, 307.2 Federal Codes:307		ADA Barrier Remediation	10 - 7 Drinking Fountain
239432	Floyd Light Park	Drinking Fountains	The bubbler height is 48-3/4" AFF (38" min to 43" max for a standing person fountain). State Codes:--- Federal Codes:602.7		ADA Barrier Remediation	10 - 7 Drinking Fountain
228752	Floyd Light Park	Access Systems	Visible fire alarm is 70" AFF (60" min to 96" max, or 4" below the ceiling, whichever is lower). State Codes:--- Federal Codes:702.1		ADA Barrier Remediation	17 - 3 Corridor / Aisle
228738	Floyd Light Park	Access Systems	A tactile and Braille EXIT sign is not provided. State Codes:--- Federal Codes:216.4, 703.4		ADA Barrier Remediation	8 - 46 Door/Gate
228739	Floyd Light Park	Access Systems	A tactile and Braille permanent room sign is not provided. State Codes:--- Federal Codes:216.2		ADA Barrier Remediation	8 - 47 Door/Gate
228740	Floyd Light Park	Access Systems	Full side slope is 2.2% to 2.5% (2.0% max). State Codes:--- Federal Codes:404.2		ADA Barrier Remediation	8 - 47 Door/Gate
228741	Floyd Light Park	Access Systems	Double door: closer sweep time is 4 seconds on southern leaf (5 seconds min). Door opening force is 10 lbs on both leaves (8-1/2 lbs max for exterior door). State Codes:---, 1101.2.2.5 Federal Codes:404.2		ADA Barrier Remediation	8 - 48 Door/Gate
228742	Floyd Light Park	Access Systems	Threshold has a height of 1" (1/4" max, up to a 1/2" with a bevel). State Codes:--- Federal Codes:404.2		ADA Barrier Remediation	8 - 48 Door/Gate
228743	Floyd Light Park	Access Systems	A tactile and Braille permanent room sign is not provided. State Codes:--- Federal Codes:216.2		ADA Barrier Remediation	8 - 48 Door/Gate
238272	Floyd Light Park	Signs	The baseline of the top line of tactile characters on the permanent room sign is 63-7/8" AFF (48" AFF min to 60" AFF max). State Codes:--- Federal Codes:703.4		ADA Barrier Remediation	9 - 19 Sign
WO Number	Property	Asset	Description	Date Due	Location	Requester
254494	Floyd Light Park	Doors - Exterior EPCC	Add door steps to front doors	11/8/2016		
259451	Floyd Light Park	Doors - Exterior EPCC	The handicap button for the front doors needs a new battery	2/31/2017	Front doors	Elizabeth Corrigan
203813	Floyd Light Park	Lighting - EPCC	Lights out (burned out? turned off) in front entrance foyer, and the outdoor front entry (some are on, so I think the two that are not on must be burned out)	11/3/2014	front foyer & front entrance	Abbe MacFarlane
218135	Floyd Light Park	East Portland Community Center and Pool	ADA door opener, located in lobby near front door (not in foyer) - not working; may need battery	9/11/2015	Near front entry	Abbe MacFarlane

# Bond Phase 2 List

Pier Park

## Restroom & Other

- 3 Roofs
- 4 Other Urgent Repairs



Matt Dishman

Montavilla

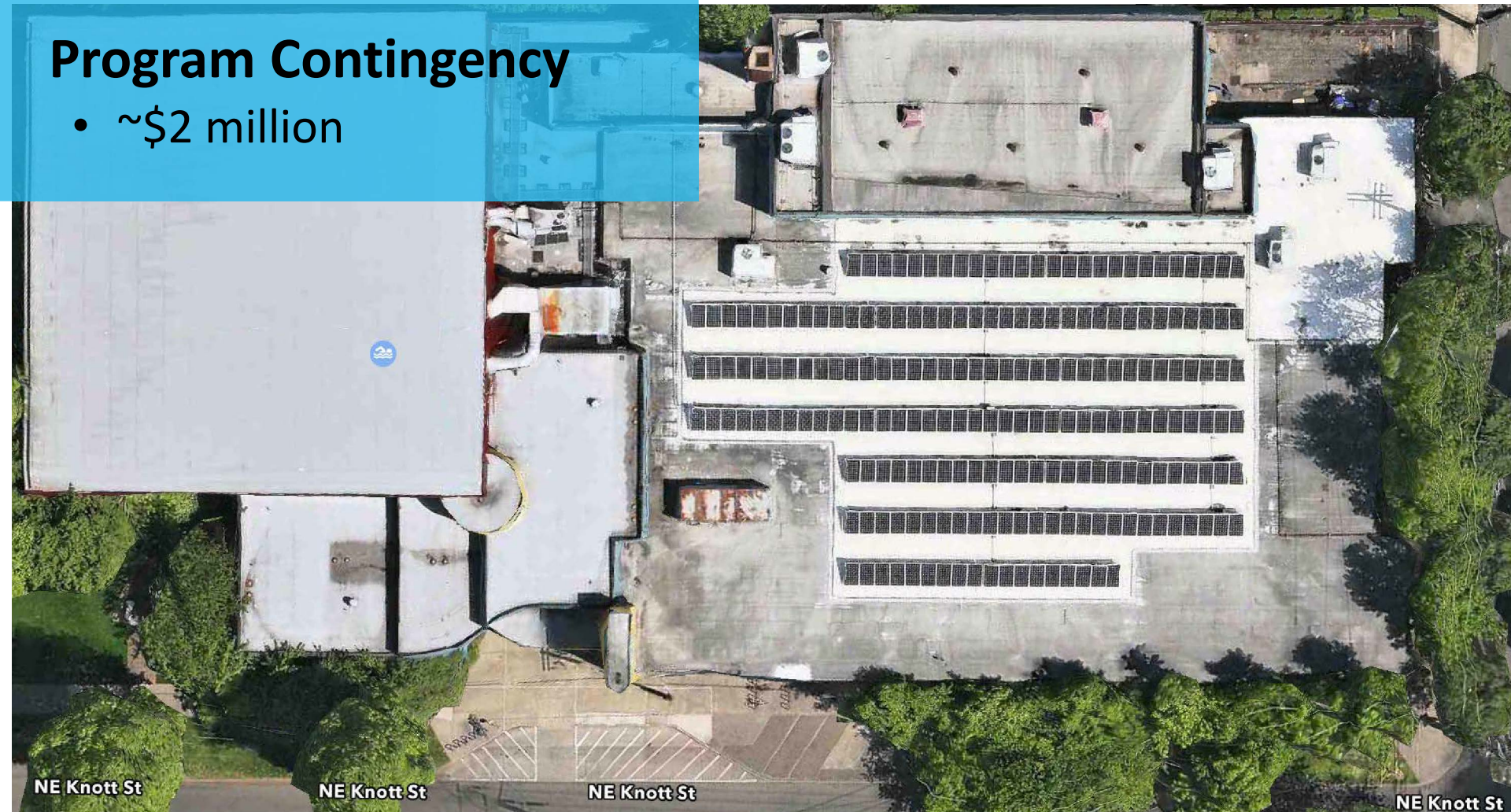




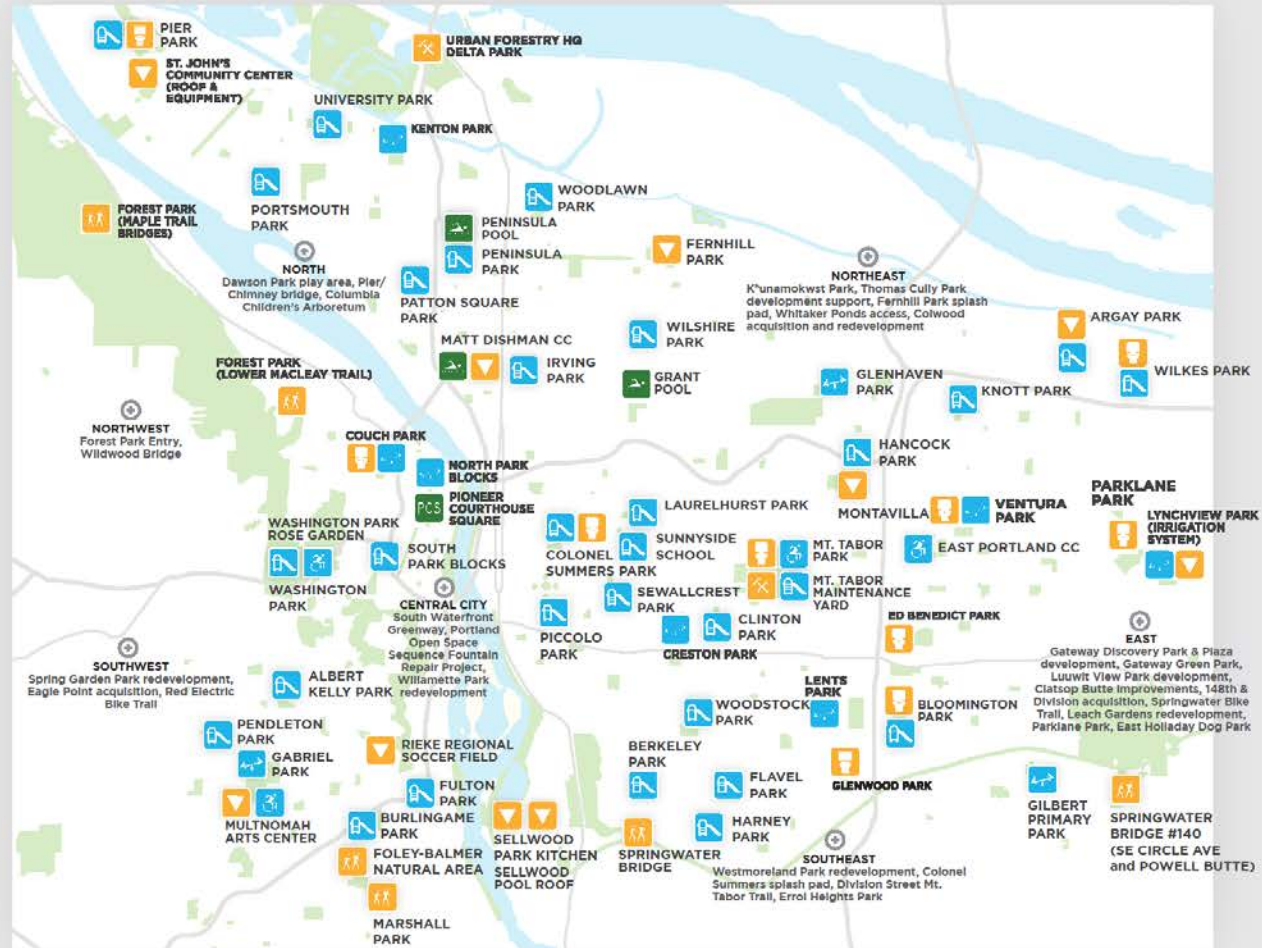
# Bond Phase 2 List

## Program Contingency

- ~\$2 million







# THANK YOU!

## ***Item 703***

***Accept the Bond Phase 2 Project List for the \$68,000,000  
Parks 2014 General Obligation Bond (Report)***

### **CONTACT INFO:**

**Lauren McGuire**

Parks Development Program Manager

City of Portland

503.823.5591

[Lauren.McGuire@PortlandOregon.gov](mailto:Lauren.McGuire@PortlandOregon.gov)

# Item 704

## ***Item 704***

***Authorize \$39,576,793 of general obligation bonds for parks projects and refunding bonds. (Ordinance)***



