

IMPACT STATEMENT

Legislation title: Approve funding recommendations made by Children’s Levy Allocation Committee for July 1, 2017 – June 30, 2019. (Ordinance)

Contact name: Lisa Hansell

Contact phone: 503 823 4133

Presenter name: Lisa Hansell

Purpose of proposed legislation and background information:

To allow the Children’s Levy to award a total of \$32,191,172 to renew current grants and award additional funds to current grantees for the remaining two years of the current levy as outlined in the memorandum entitled “Request City Council Approval” and “Exhibit C: PCL Grant Renewal and Additional Funding Amounts Approved by the Allocation Committee”.

Financial and budgetary impacts:

There are no costs to the City general fund. Children’s Levy revenues are generated by a special property tax levy and the Children’s Levy proposes to use a portion of the proceeds of the levy to fund the allocations.

Community impacts and community involvement:

The allocations for which approval is requested will benefit low income children of all ages, and families living throughout the city of Portland. During the first two years of the current levy, 70% of the children served in Levy funded programs were children of color. Prior to each meeting in which funding decisions were considered, funding recommendations were sent to current grantees of the Children’s Levy. Funding decisions were made in a series of public meetings in which testimony was received and considered by the Allocation Committee.

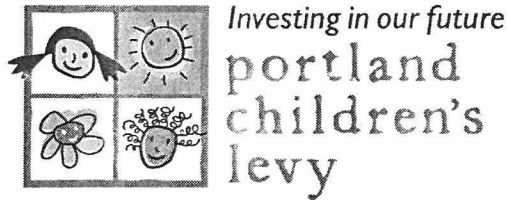
Budgetary Impact Worksheet

Does this action change appropriations?

YES: Please complete the information below.

NO: Skip this section

Fund	Fund Center	Commitment Item	Functional Area	Funded Program	Grant	Sponsored Program	Amount



Request for City Council Approval

Background

In November 2002, Portland voters approved the Portland Children's Levy (PCL). The Levy was approved by voters for a five-year renewal in fall 2008 and again in spring 2013. The Levy generates \$10-15 million annually for programs benefitting Portland children in early childhood, after-school, mentoring, child abuse prevention and intervention, foster care and hunger relief. Administrative costs for the fund are capped at 5% of revenues and the fund obtains annual audits to assure compliance with the administrative cap. A copy of the 2013 ballot language for the Children's Levy is attached as "Exhibit A: Children's Levy 2013 Ballot Language."

An Allocation Committee governs the PCL and grants funds to programs serving children and families residing in the City of Portland. The Allocation Committee is comprised of a City Commissioner (Dan Saltzman), a County Commissioner (Deborah Kafoury), a representative of the Portland Business Alliance (Mitch Hornecker), a citizen member appointed by the County Board (Serena Stoudamire-Wesley), and a citizen member appointed by the City Council (Julie S. Young).

Most current PCL grants expire on June 30, 2017 and are eligible for renewal for the remaining two years of the current Levy period. The Allocation Committee considered renewal for current grantees and PCL is now seeking City Council approval of grant renewals and other allocations to existing grantees as described below.

Process for Renewal of Levy's Competitive Grants

The Allocation Committee considered grant renewal using the following performance information:

- Performance of grantee on PCL accountability metrics (service goals, client participation data including early exits, minimum dosage and data disaggregated by race/ethnicity, program outcomes, staff turnover); *A template of the Performance Summary is attached to this memo as Exhibit B.*
- Information provided in mid-year and annual written reports, along with information communicated in any meetings between grantees and PCL staff that provides further context for program implementation;
- Financial review including percentage of grant funds spent to date and results of applying analysis tool to annual financial audits submitted by grantees.

In March 2017, the Allocation Committee voted to award renewal funding totaling \$30,373,161 for the final two years of the current levy period (July 1, 2017 – June 30, 2019); “Exhibit C: PCL Grant Renewal and Additional Funding Amounts Approved by the Allocation Committee.”

Additional Revenues

At the close of FY 15/16 there was \$4.9 million in accrued, unallocated revenue due to revenues exceeding the projections on which grants to date had been made. The Allocation Committee decided to allocate \$4.4 million of the fund balance to coincide with the grant renewal process and hold \$500,000 in reserves. In a series of public meetings, the Committee voted to allocate the additional revenues as described below to further specific policy goals.

Cost-of-Living Adjustment for Current Grantees

When funds have been available in the past, PCL has given grantees a cost-of-living adjustment (COLA) to account for the effects of inflation in providing services. With additional funds available again, the Committee voted to provide a COLA of 3.5% per year compounded for current grantees for the two remaining years of current contracts. The total investment in the COLA is \$398,584 over two years.

Reduce Caseloads for Home Visiting Programs and Group Size for Preschool Group Programs

Current grantees operating home visiting services were eligible to request up to a 20% funding increase over FY16-17 grant budget amounts, each year for the remaining 2 years of the levy (through June 30, 2019) to lower home visitor caseloads, increase reflective supervision offered to home visiting staff, and to maintain the number of children/families to be served as similar to goals for the FY16-17 year.

Over the past year, the Levy has undertaken quality improvement work in early childhood, child abuse prevention/intervention and foster care program areas in an effort to support programs in becoming more trauma-informed in their practices. Additional funds for home visiting programs allows for additional service improvements by reducing the workload for home visitors to an average of 8 home visits per week and assures they have additional supervisory support for their work. These standards reflect current model expectations, such as Early Head Start home-based services, for home visiting programs that serve families who have experienced trauma and have high needs. Recent trauma research increasingly points to lower caseloads, more reflective supervision and support for supervisors, support and coaching for program staff from mental health consultants, and ongoing support for staff’s wellness.

The Committee also allowed programs offering preschool groups the opportunity to request additional funding to decrease preschool group sizes. Lower group sizes will help staff better support participating families, and bring adult to child ratios closer to ratios of staff to children in preschool classrooms.

PCL staff reviewed the requests and used the following process to make recommendations to the Allocation Committee regarding additional funding levels:

- Reviewed amounts requested by grantees compared to full amount eligible.
- Reviewed current budgets and proposed FY17-18 budgets to compare levels of home visiting and supervisor FTE and associated costs.
- Assessed whether proposed FTE increases are commensurate with additional funding requested.

In May 2017, the Allocation Committee voted to award additional funding to 16 grantees that offer home visiting services and 2 grantees that offer preschool groups; “Exhibit C: PCL Grant Renewal and Additional Funding Amounts Approved by the Allocation Committee.” The total investment in the reduction in caseloads/ preschool group size is \$1,021,783 over two years.

Mental Health Consultation Services for Home Visiting Programs

The Levy currently has a grant with Morrison Child and Family Services to provide Early Childhood Mental Health Consultation Services to early childhood center-based programs funded by the Levy. The Committee voted to increase funding for Morrison Child and Family Services to expand mental health consultation services to include home visiting programs funded by PCL, including those for families with children older than age five. The additional mental health consultants will offer training and consultation services to programs in 3 program areas: early childhood, child abuse prevention & intervention, and foster care. Consultants will provide additional supports to home visitors, their supervisors, and their clients. They will provide onsite coaching and training that improves the use of trauma-informed service approaches, and supports and strengthens program supervisors’ reflective supervision practice to better address staff wellness, burnout and vicarious trauma. The total additional investment for the Morrison grant is \$385,000 over two years.

Expanded Summer Programming for Current After School Grantees

To prevent summer learning loss and increase the availability of summer programming in the community, current after school grantees were eligible to request up to a 30% of their total 2-year renewal amount to expand summer programming (e.g. serve more children, and/or increase hours of service available, and/or increase number of locations at which services are available). The funds were not intended to provide start-up funds for organizations/programs that did not offer summer programming in 2016, or to absorb an increased share of the cost of regularly scheduled summer programming offered by organization/program. Grantees were required to describe how the proposed expansion represented an increase in programming over and above summer programming offered by agency/program in 2016.

PCL staff reviewed the requests and used the following process to make recommendations to the Allocation Committee regarding additional funding levels:

- Determined whether proposed additional services represented an increased service level over services provided in summer 2016;
- Determined whether proposed additional services represented an expansion of services available to youth in the community;
- Reviewed list and justification of expenses for proposed expansion;

- Assessed whether proposed increases in staffing and other program delivery expenses were directly related to the proposed service expansion, and were reasonable in consideration of the level of expansion proposed and as compared to current program delivery costs;
- Conferred with grantees to modify proposals where justification was questionable or lacked detail.

In May 2017, the Allocation Committee voted to award additional funding to 10 after-school grantees; "Exhibit C: PCL Grant Renewal and Additional Funding Amounts Approved by the Allocation Committee." The total investment in expanded summer programming is \$360,556 over two years.

Increase Funding to Grantees Implementing Youth Program Quality Assessment

PCL has been supporting implementation of the Youth Program Quality Intervention for after-school and mentoring programs choosing to participate. Feedback from participants included need for additional staffing support to implement the continuous improvement process focused on quality youth development practice. Current after-school and mentoring grantees implementing or planning to implement Youth Program Quality Assessment (YPQA) were eligible to request up to 5% of their FY 16-17 funding amount to support implementation of the YPQA process. Grantees were required to list and justify additional expenses included in the budget to support YPQA implementation which could include staff time for training, assessment and improvement planning, logistics and materials.

PCL staff reviewed narrative descriptions justifying the additional expenses proposed in FY17-18 grant budgets and assessed reasonableness of request in light of workload required for implementation, size of the participating staff, and costs associated with program improvement efforts. PCL staff made recommendations to the Allocation Committee regarding funding levels.

In May 2017, the Allocation Committee voted to award additional funding to 9 after school and mentoring grantees; "Exhibit C: PCL Grant Renewal and Additional Funding Amounts Approved by the Allocation Committee." The total investment in expanded summer programming is \$50,672 over two years.

New After School Programs

The Allocation Committee has allocated \$800,000 to new after school programming for children in grades K-5 for enrichment programs and intensive academic support programs. A competitive process to award funds is currently underway.

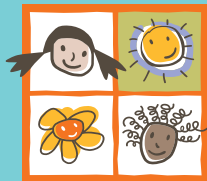
Additional Accrued Revenue

An additional \$1.6 million of accrued revenue remains to be allocated. The Allocation Committee is scheduled to make allocation decisions regarding the remaining \$1.6 million in accrued revenue at its July 24th meeting.

Request for City Council Approval

PCL is requesting that City Council accept these recommendations of the Allocation Committee to fund the investments totaling \$32,191,172 as detailed in "Exhibit C: PCL Grant Renewal and Additional Funding Amounts Approved by the Allocation Committee".

Celebrating
15 Years
of
*Serving
Our
Community*



Investing in our future
**portland
children's
levy**



THROUGHOUT HISTORY,

flowers have been associated with certain meanings or attributes. For the Portland Children's Levy 2017 Community Report, we chose the language of flowers to tell the story of some of the children and families we serve.

To do that, we asked families and children at six programs we support to select an attribute, from the list on the right, that best describes the asset they have gained or affirmed during their time there.

The result is this album of photos and accompanying quotes illustrating how empowering people's lives creates a stronger community for all of us.

Thank you to the children, families and students at the six sites we visited.

Immigrant Refugee and Community Organization: (IRCO): a program offering child development services for immigrants and refugees

Metropolitan Family Service Ready Set Go: a preschool for Latino families

NAYA Family Center: a program offering advocacy and enrichment services for Native American youth

Portland OIC: a mentoring program for students

Self Enhancement, Inc. and Open School's Step Up: programs offering after-school activities for students

pink rose



appreciated

daisy



creative & strong

orchid



loved

statice



successful

eucalyptus



safe & empowered

mums



excited & joyful

lily



ambitious

alstroemeria



friendship

red rose



respected

Dear Portlander,

These are challenging times for our community and our country. We have witnessed efforts to marginalize refugees and immigrants; to undercut gains made by minorities and people of color; to disenfranchise the most vulnerable populations among us.



The Portland Children's Levy has always stood for leveling the playing field for children and families so they can overcome historical and institutional barriers and succeed in their homes, in their schools and in their communities. We recognize that economic instability, lack of affordable housing and systemic racism are key reasons why disparities exist, and seek to annually invest over \$15 million in quality and proven programs to enhance and improve the lives of children and their families from birth through college and beyond.

The Portland Children's Levy strongly believes in the inherent right of all children having educational and economic opportunities to thrive and prosper.

We invite you to review the 2017 Community Report and our use of flowers to celebrate 15 years of serving Portland children and families. We are confident that these new generations of leaders will help usher in more hope-filled tomorrows so our city, state and nation can reach its promised potential.

Sincerely,

Dan Saltzman
Portland City Commissioner
Chair, Portland Children's Levy Allocation Committee
dan@portlandoregon.gov



Investing in our future
portland children's levy

2002-2017

Portland Children's Levy ☎ 319 SW Washington St, Suite 415 ☎ Portland, OR 97204
503.823.2936 ☎ portlandchildrenslevy.org

Follow us on Facebook and Twitter



WE PROVIDE OPPORTUNITIES

for
*Children
and
Families*

THE PORTLAND CHILDREN'S LEVY

grew out of a need to increase children's access to proven programs that support:

- ✿ Positive early development
- ✿ School engagement and academic achievement
- ✿ High school graduation
- ✿ Family safety and stability

SINCE 2002, Portland Children's Levy programs have strengthened the entire Portland community by supporting thousands of children from birth through 24 reach their potential.

Portland Children's Levy-funded programs have also empowered parents and caregivers to become more confident and skilled at advocating for their children in the classroom and in life.



OUR GOALS

- ✿ Prepare children for school.
- ✿ Support children's success inside and outside of school.
- ✿ Reduce racial and ethnic disparities in children's well-being and school success.

OUR PROGRAMS

EARLY CHILDHOOD

Helping children prepare for kindergarten

Early childhood programs lead to better reasoning and language skills as well as healthy social and emotional development.

MENTORING

One-on-one help to support academic and social skills

Positive, caring, consistent adult role models support students' engagement in school and help them realize their academic and life goals.

AFTER-SCHOOL

A safe place for students to learn and have fun

Students gain self-esteem, confidence and leadership skills in a safe haven with caring adults who provide academic support and fun activities.

CHILD ABUSE PREVENTION & INTERVENTION

Empowering the development of strong families

Children thrive when parents gain parenting skills and are supported in their role of parent.

FOSTER CARE

Supporting the well-being and development of children and youth in foster care

Programs work with children and youth to strengthen academic and life skills and assure the presence of caring adults.

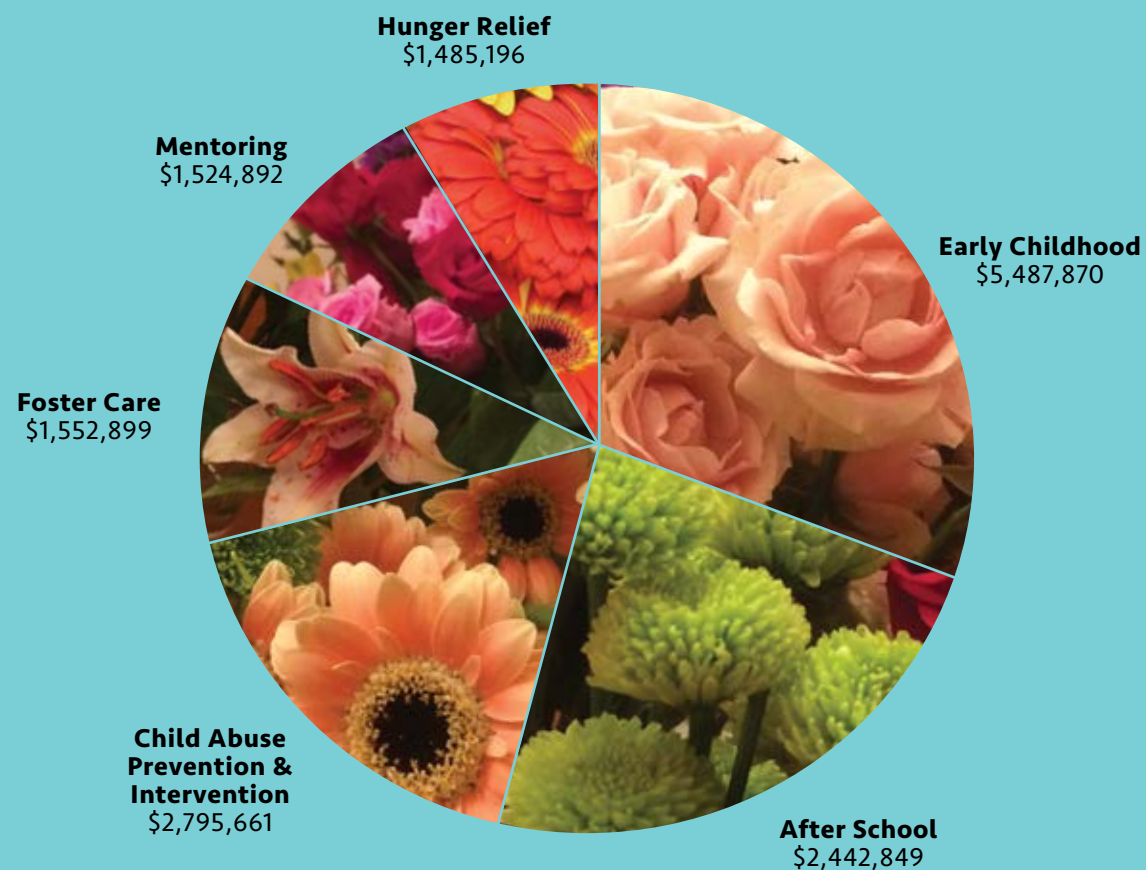
HUNGER RELIEF

Getting healthy and nutritious food to children and families

Children who have regular and nutritious meals can concentrate on learning. They experience healthy growth and are less susceptible to illness and behavioral problems.

MAKING *Children a Priority*

2017 PROGRAM INVESTMENTS



STEWARDS OF YOUR TAX DOLLARS

The Portland Children's Levy is overseen by a five-member Allocation Committee that meets publicly to make funding decisions. It is composed of a Portland City Commissioner, a Multnomah County Commissioner and three citizen members appointed by the City, County and the Portland Business Alliance. The Levy has annual audits by an independent firm with results published on our website at www.portlandchildrenslevy.org. An administrative cap of 5 percent means that 95 cents of every dollar goes to proven programs. City homeowners support the Levy through a property tax of about \$60 a year for a home with an assessed value of \$150,000.

CURRENT MEMBERS

Dan Saltzman

Portland City Commissioner
Allocation Committee Chair

Deborah Kafoury

Multnomah County
Commission Chair

Julie S. Young

Youth advocate and
community volunteer

Serena Stoudamire-Wesley

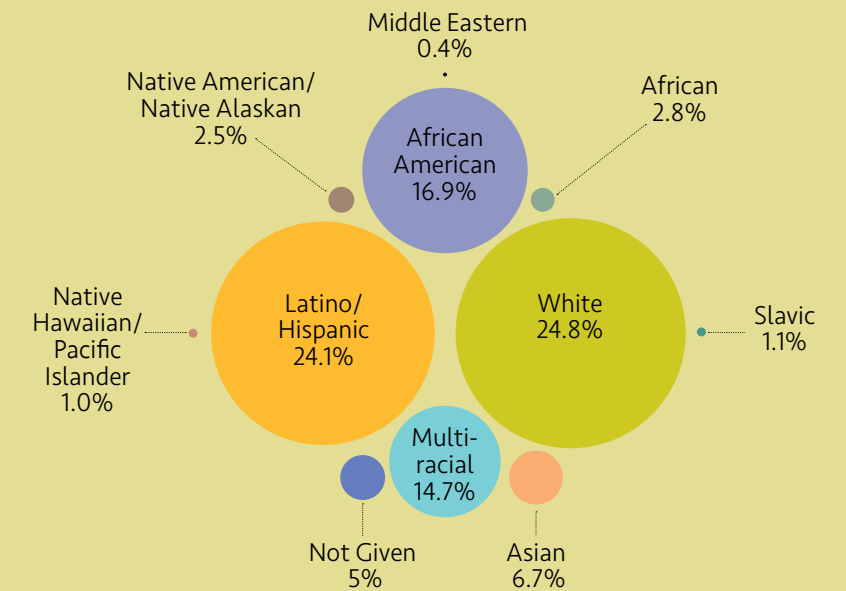
Early childhood advocate and
community volunteer

Mitch Hornecker

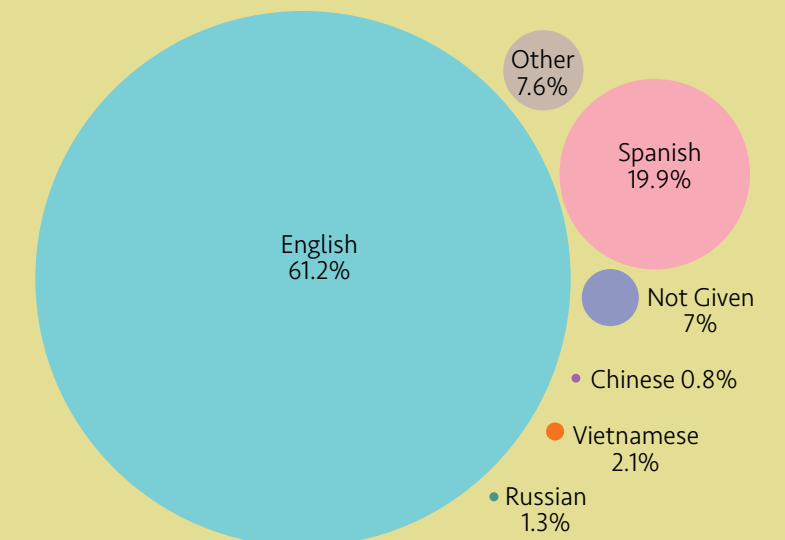
Principal,
Modoc Consulting

WHO WE SERVE AND WHERE*

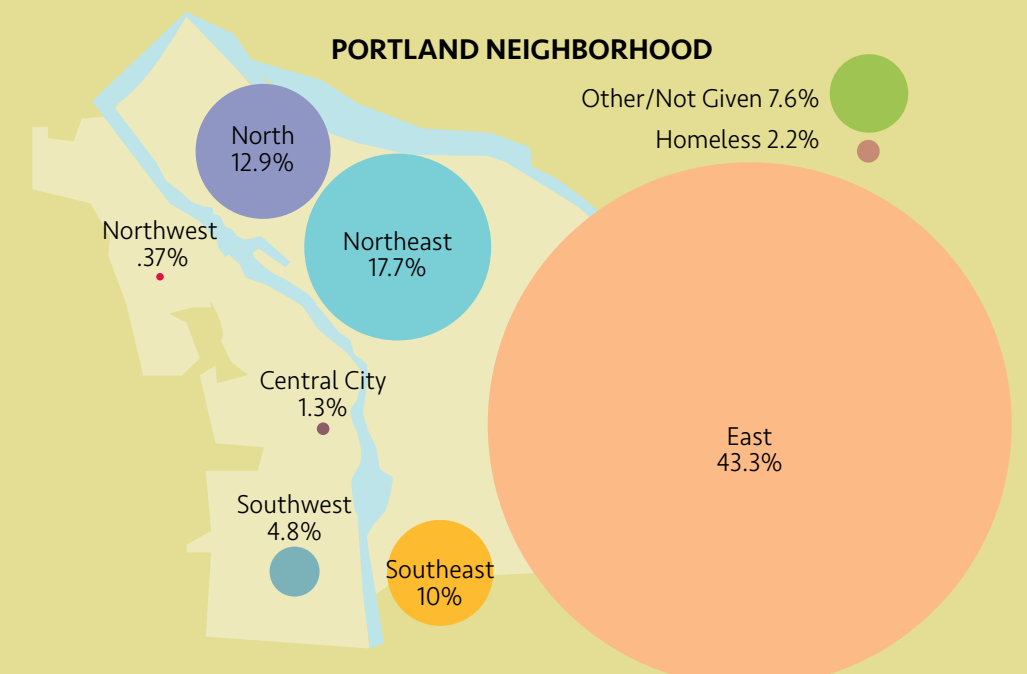
RACE/ETHNICITY



PRIMARY LANGUAGE SPOKEN AT HOME



PORTLAND NEIGHBORHOOD



*These charts represent the majority of Levy-funded programs which annually serve over 11,000 children. They do not include Hunger Relief services that annually provide food to over 20,000 children, 78 percent who were children of color; 66 percent who spoke a first language other than English; and 77 percent who resided in East Portland.

PINK ROSE
Appreciated

“ POIC has really helped me. When I came here I needed to get more credits and get my grades up. They care about me so that one day I'll walk across that stage and graduate. ”

Charnell



“ Open School's Step Up has always appreciated everything I do, and I appreciate what they've done for me and all the support they give me. They push me to give the best of me. ”

Andrea



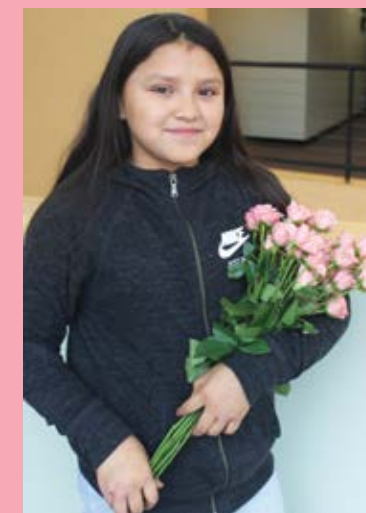
“ I feel like I can do anything now that I have been coming to SEI. Everybody gives me good vibes. ”

Damonie



“ We don't get to see each other that often so we're really appreciative of NAYA having Sibling Night so we can be together. ”

Sisters Rae and Endia



“ There's always good in the world and you just have to find it. I was having a rough time and I started coming to SEI and it's gotten better. ”

Sydney



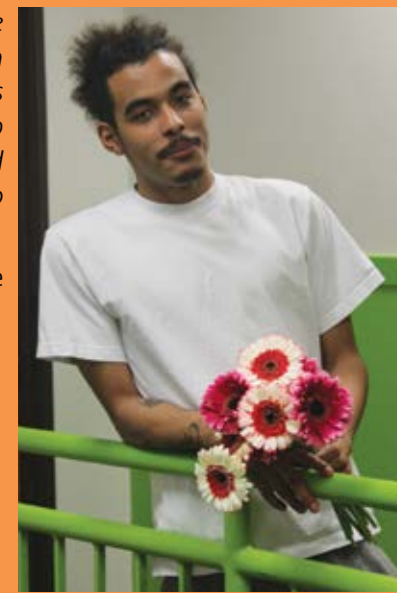
“ The MFS Ready Set Go teachers made me feel part of a family and they helped Valentina get ready for kindergarten. ”

Mom Sonia, Valentina, big brother Brandon

DAISY
Creative & Strong

“ I get all the love and attention from staff and friends here at POIC. I keep everybody in good spirits and they do the same. ”

Justice



“ SEI makes me feel creative and strong. I don't take sass and I don't take disrespect. ”

Aymehir



“ Their foster parents are happy that the NAYA program allows these siblings to see each other and maintain their strong bond. ”

Leilani and her brother Antonio



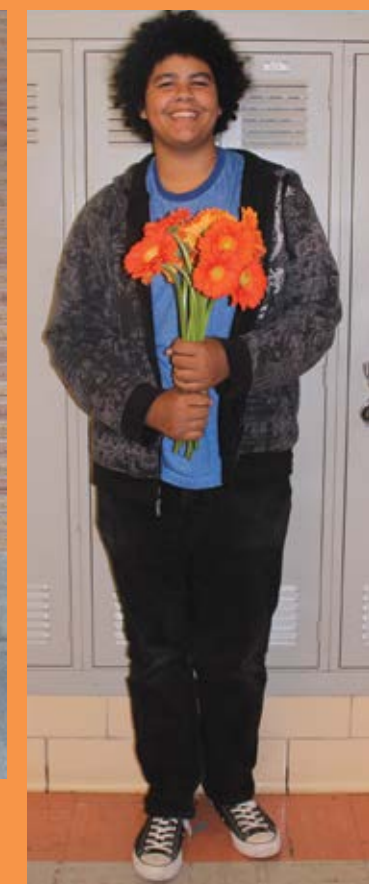
“ We have gotten a lot of help from IRCO to make our family stronger. I appreciate the new life and the new hope we got. ”

Dad Manh, mom Phung, daughter An and sons Kha and Binh



“ We have to be strong and creative to use the tools that the MFS Ready Set Go staff teach us. Our son's behavior and learning has really improved since he has been going. ”

Mom Maria, daughters Mireya and Marissa, and son Raymond



“ Open School's Step Up is a very supportive and kind community and it's allowed me to be creative. ”

Ryan



ORCHID
Loved

“ I feel like when I’m around Open School’s Step Up – no matter what I do – the people around me are going to love me regardless.”

Alisinae



“ The MFS Ready Set Go teachers love the kids and notice all the needs they have. They see the potential in the children and in the moms and the dads and help us become better parents. They notice needs of the families and help with referrals.”

Mom Ediverta, dad Manuel, big sister Priscilla, big brother Nate, little sister Esther



“ We love each other and we come together here at NAYA.”

Grandma Hazel, big brother Kenneth, little brother Kristopher



“ POIC cares about me and makes sure I’m all right and makes sure I have everything I need.”

Daiveonna



“ We came from Ukraine. Here at IRCO, we feel loved because people are so friendly and we are treated equally. The kids feel loved and I feel loved and we are not judged. No one looks down on us for worshipping at our church or having a large family.”

Mom Liubov, sister Milana, brother Daniel, baby Solomia

STATICE
Successful

“ I’ve been working hard at POIC and trying to be independent to reach my goals, get through high school and get to college. ”

Diantra

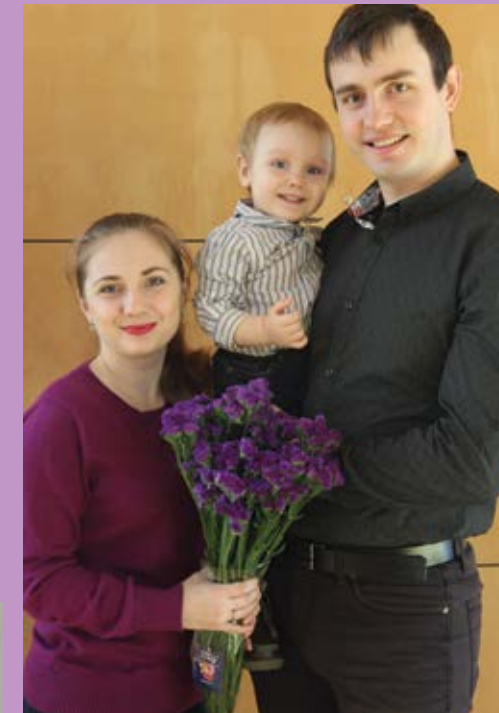


“ I feel like Open School’s Step Up has gotten me to strive to be better. If I didn’t have Step Up I wouldn’t have gotten good grades. It gives me time to think and understand my classes, get help when I need it, and I always have someone encouraging me. ”

Miles

“ We have learned a lot of new things at IRCO. This is our first baby and a new country so we learned about child safety, discipline, nutrition, education and how to be more successful parents. And David has learned to love books and reading, which you need to be successful. ”

Dad Yaroslav, mom Natalia, and David



“ Ever since I have been coming here to SEI I have been getting my work done and getting my grades up. ”

Jordan



“ I learned how to parent two very different boys with very different personalities through the MFS Ready Set Go program. ”

Mom Erica, little brother Damien, big brother Gavin, dad Andrew



EUCALYPTUS Safe & Empowered

“ We get to come here to SEI and have fun and play with our friends after school, and it’s a safe place to do that. ”

Jason



“ IRCO has helped me out a lot. Anytime I have a problem they are there to assist with a job, connect with resources, assist me in fitting in with the community and provided well-child visits to my home. ”

Mui and Jack



“ POIC feels safe. I feel comfortable and I don’t have to watch my back. I feel like I fit in. ”

Arthur



“ I feel like NAYA has become a home for my girls and the staff here has become like family. ”

Mom Nicomi and daughters Jasmine, Maria and Anna



“ I like coming here to POIC. I feel part of a family. ”

Diego

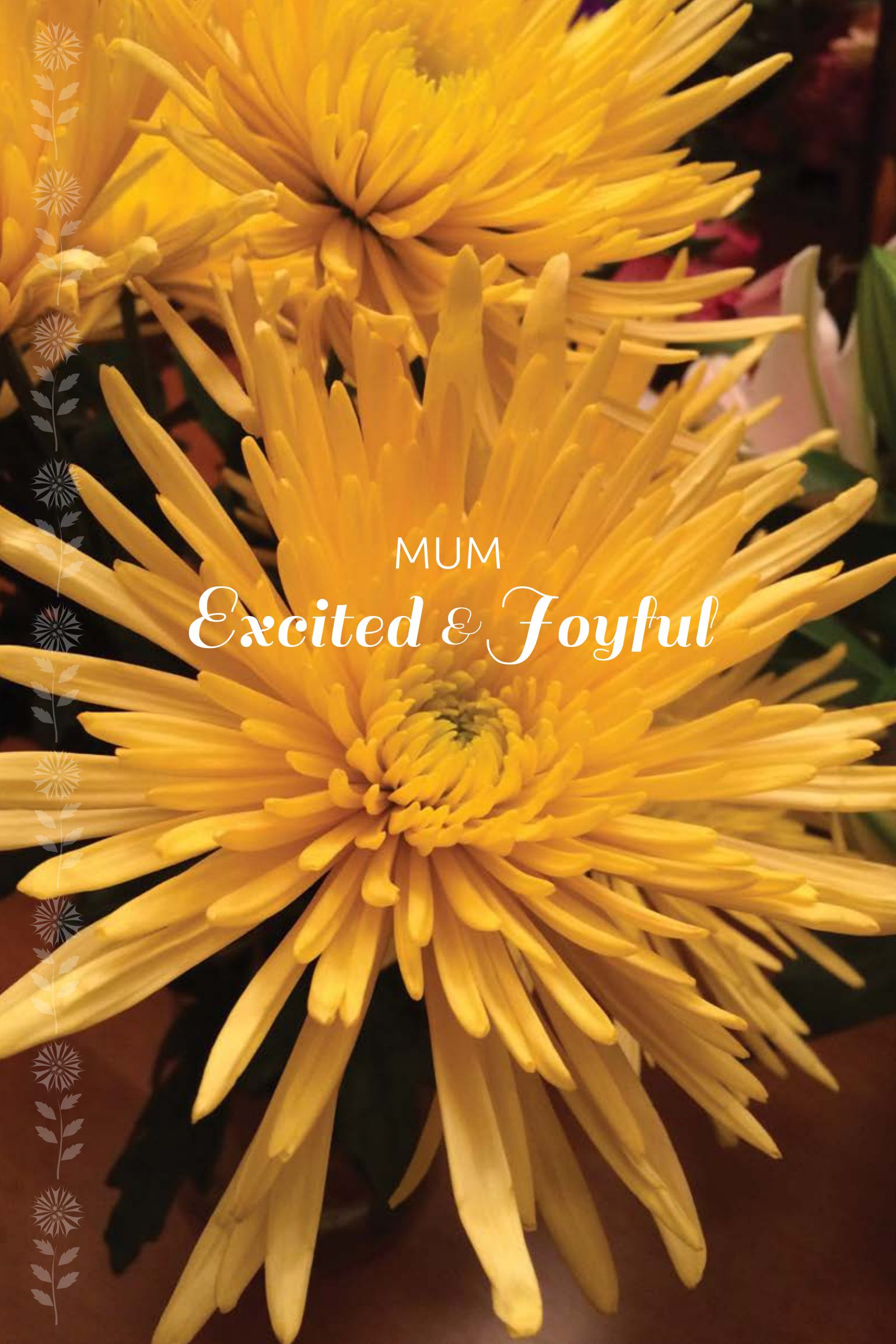
“ The teachers are really helpful at POIC. You can talk to them. They’re teachers, but they’re also friends. They make me feel comfortable and safe around them. ”

Rafael



“ Whenever I go to Open School’s Step Up I feel so much protection and I feel safe around them. ”

Daniela



MUM
Excited & Foyful

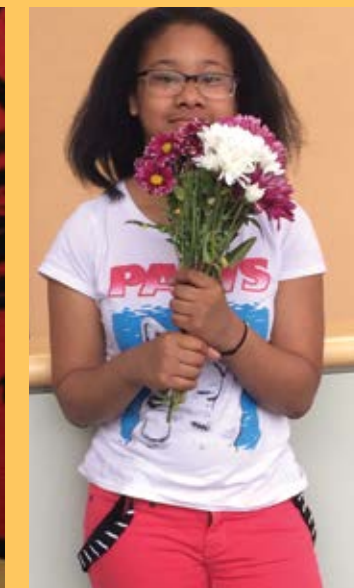
“ I like to come to NAYA, it makes me feel happy. ”

Carlos



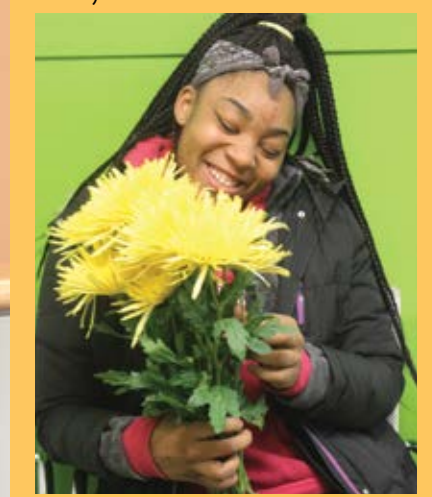
“ I am happy at SEI. My friends are all here and this place makes me happy and excited. ”

Endia



“ The teachers at POIC are full of joy and make me want to come here. They make me excited about coming here and they make learning fun. ”

Antajhae



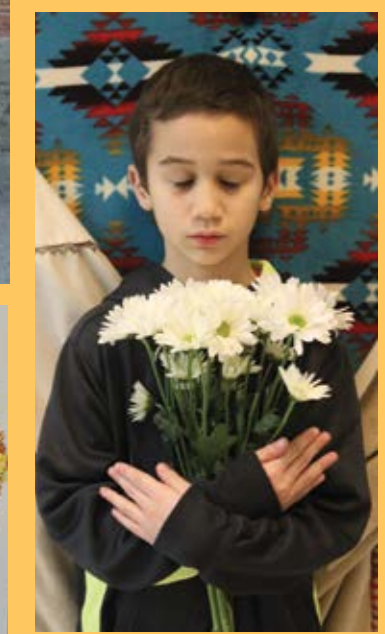
“ The MFS Ready Set Go has been a blessing for us. It's definitely helped my son get ready for kindergarten. I'm really excited and joyful to see this growth and all that they're learning. I am just as excited to learn the skills that I need to be a better parent. ”

Mom Jessi, baby Millie, daughter Morgan and son Tanner



“ After help and support from IRCO we are happy and excited to be in America and use the parenting skills they taught us. ”

Dad Triet, mom Thuy, daughter Nha



“ Open School's Step Up helps me keep my grades up and that has made me and my parents really happy. ”

R.T.

“ I'm always excited to come to NAYA. ”

Mac



STARGAZER LILY
Ambitious

“ Open School’s Step Up has inspired me to be overly ambitious in a good way, because I aspire to be everything I want to be and I don’t hold myself back anymore. Instead of walking toward my goals I run now. ”

Kiwi



“ I get to reach my goals and I know I can push myself to get there. POIC has helped me to be ambitious. ”

Juana



“ IRCO has helped me with parenting skills and to want the very best for my family and children. ”

My and Jason



“ I think it’s good to be ambitious because other people are going to put pressure on you and you just have to keep moving forward. You have to stay focused and accomplish what you want and SEI has helped me do that. ”

Kiah



“ Being a part of my NAYA community is everything. ”

Corey

ALSTROEMERIA
Friendship

“ I’ve made a lot of friends at SEI. No matter where I go and even when my friends and I go to different schools, we can always come back here and see each other. Being part of SEI gives you friendships that last forever. ”

Kave’



“ We are happy that we’ve made new friends in the community, with other families, and with other Nepali families in the program here at the MFS Ready Set Go program. ”

Mom Yangri, dad Home, daughter Neeza and son Neelesh



“ We come to NAYA and we can be friends here. ”

Siblings Erika and Logan



“ In middle school I didn’t really have friends my own age and I wasn’t really able to talk to kids my own age. But now, thanks to Open School’s Step Up, I have made so many friends who won’t judge me by my cover but how I am on the inside. ”

Betsy

“ I like meeting new people here at POIC. I like being friends with everybody. I’m cool with everyone. ”

Shaleyah



RED ROSE
Respected

“ Respect is one of the most important things here at POIC. It's a biggie to me . . . you respect yourself, you respect others and you expect they will respect you back. ”

Taj



“ Everything starts with respect. . . without it, there is nothing. When I came to IRCO I learn respect for my Somali culture. IRCO has helped me teach my children to be respectful of teachers and education and their schools. ”

Mom Amran, sons Abdullahi, Hamza, and baby Ali



“ NAYA helps us respect our culture, our school and each other. ”

Big sister Chance and sisters Kylla, Kaylee and Lyra



“ I like to be respected at SEI. You never know how people are going to treat you so it's important to want respect. ”

Alahna

“ Every time I have an opinion I feel like Open School's Step Up respects me, and that makes me feel like I have a good community. ”

Kendra



OUR INVESTMENTS

15 YEARS OF SERVING OUR COMMUNITY

EARLY CHILDHOOD PROGRAMS

Albina Head Start ✨ Early Head Start classrooms and home-based Early Head Start services; N, NE, SE Portland.

Albina Head Start ✨ Head Start preschool classrooms; N, NE, SE Portland.

Friendly House Preschool ✨ Preschool for children from low-income families; NW Portland.

Hacienda CDC ✨ Home-visit child development services with families in Hacienda locations; N, NE Portland.

Immigrant & Refugee Community Organization ✨ Home-visit child development services with immigrants & refugees; citywide.

Impact Northwest ✨ Home-visit child development services and preschool playgroups; NE, SE Portland.

Latino Network ✨ Weekly preschool groups for children and parents focused on Latino families; N, NE, E Portland.

Metropolitan Family Service ✨ Weekly preschool groups for children and parents focused on Latino families; E Portland.

Morrison Child & Family Services ✨ Mental health consultation and parenting education at 10 childcare sites & preschools; citywide.

Morrison Child & Family Services Listos Para Aprender ✨ Home-visit child development services with Latino families; citywide.

Mt. Hood Community College Head Start ✨ Two Head Start preschool classrooms; E Portland.

Mt. Hood Community College Head Start ✨ Home-based Early Head Start services; E Portland.

Mt. Hood Community College Childcare Initiative ✨ Childcare affordability support for low-income working families; citywide.

NAYA Family Center ✨ Home-visit child-development services for Native American / Alaska Native families; citywide.

Neighborhood House Early Oregon Pre-Kindergarten ✨ Home-based services modeled after Early Head Start; SW Portland.

Neighborhood House – Peninsula Children's Learning Center ✨ Preschool for children from low-income families; N, NE Portland.

Portland Public Schools Head Start ✨ Four extended-day Head Start classrooms; SE Portland.

AFTER-SCHOOL PROGRAMS

Boys & Girls Clubs of Portland Metropolitan Area ✨ SUN Community School program at Margaret Scott Elementary School; NE Portland.

Ethos Music Center ✨ After-school music education program at 13 schools for students in grades 2-8; N, NE, SE Portland.

Girls Inc. of Northwest Oregon ✨ After-school program for girls focused on youth development at nine schools for students ages 8-14; citywide.

Hacienda CDC ✨ Homework support and enrichment programming for children residing in Hacienda housing sites; N, NE Portland.

Human Solutions ✨ After-school program including intensive academic support and tutoring for children residing in four public housing sites; E Portland.

Immigrant & Refugee Community Organization ✨ After-school tutoring, academic support and parent engagement for immigrants /refugees in grades 4-9; E Portland.

Immigrant & Refugee Community Organization ✨ SUN community school program at Parkrose Middle School and Ventura Park Elementary School; NE, SE Portland.

Impact Northwest ✨ Urban Opportunities program prepares youth for employment with training, job readiness skills and internships; N, NE Portland.

Impact Northwest ✨ After-school science program at SUN Community Schools in Portland; citywide.

Metropolitan Family Service ✨ SUN Community School program at Cherry Park and West Powellhurst elementary schools; outer SE Portland.

NAYA Family Center ✨ Homework support, cultural arts and sports after school and summer program for students ages 5-18; citywide.

Neighborhood House ✨ Intensive academic support for students attending Hayhurst Elementary School, including children living at Stephens Creek Crossing; SW Portland.

Open School ✨ After-school program offering tutoring, academic support, advocacy and dropout prevention at Madison, Franklin and Roosevelt high schools.

Playworks ✨ Junior Coach Leadership after-school program offered at nine schools includes training and practice in conflict resolution, leadership, teamwork and physical activity; citywide.

Saturday Academy ✨ After-school enrichment programs at 20 schools in grades 1-8; N, NE, SE Portland.

Self Enhancement, Inc. ✨ After-school academic support and enrichment services for children in grades 6-8, focused on African American youth; N, NE Portland.

MENTORING PROGRAMS

Camp Fire USA Portland Metro Council ✨ School-based mentoring for students at George and Lane middle schools; N, SE Portland.

College Possible ✨ Mentoring focused on college application and enrollment; SE Portland.

Friends of the Children ✨ Long-term, community-based, mentoring program for children grades K-12; citywide.

Immigrant and Refugee Community Organization ✨ Community-based mentoring program for high school immigrant youth; NE, SE Portland.

NAYA Family Center ✨ Mentoring for Native American youth in high school and emphasis on high school graduation and post-secondary goals; citywide.

Portland OIC ✨ School-based mentoring for students attending Rosemary Anderson High School; N Portland.

CHILD ABUSE PREVENTION AND INTERVENTION PROGRAMS

Bradley Angle House ✨ In-home and group parenting education and support for families with children ages 0-12 who have experienced domestic violence; citywide.

Católico/El Programa Hispano ✨ Individual and group parenting education and support for Latino families, with children ages 0-12, who have experienced domestic violence. Therapeutic services for children; citywide.

Immigrant & Refugee Community Organization ✨ In-home parenting education and support for low-income immigrant/refugee families, with children ages 0-18, who are at risk for abuse or neglect; citywide.

Impact Northwest ✨ Individual and group parenting education and support for families, with children ages 0-12, who have experienced domestic violence; citywide.

Janus Youth Programs/Insights ✨ In-home parenting education and support for parents, ages 15-21, and their children; citywide.

Legacy Emanuel Hospital and Health Center/ CARES Northwest ✨ Assessment and therapeutic services for children ages 0-18 with child abuse concerns; citywide.

LifeWorks NW, Children's Relief Nursery ✨ Classroom-based therapeutic care for children ages 0-5, home visits, parenting education and respite care; N, NE Portland.

LifeWorks NW ✨ In-home parenting support for families with children ages 0-18 who are at risk for child abuse and neglect; citywide.

Metropolitan Family Service ✨ In-home parent education and support for families with children ages 0-11 who are at risk for abuse or neglect; E Portland.

Pathfinders of Oregon ✨ Parenting classes, case management and home visiting services for families involved in the criminal justice system or child welfare system; citywide.

Portland OIC ✨ In-home and classroom parenting education and support for African American parents attending Rosemary Anderson High School or POIC; citywide.

Salvation Army/West Women's and Children's Shelter ✨ Individual and group parenting education and support for families, with children ages 0-18, who have experienced domestic violence; citywide.

Self Enhancement, Inc. ✨ In-home and classroom parenting education and support for African American families enrolled in SEI's school program; N, NE Portland.

Volunteers of America ✨ Drop-in child care for children, ages 6 weeks-10 years, while parents access services through the Gateway Center for Domestic Violence Services; citywide.

Volunteers of America ✨ Classroom-based therapeutic care for children ages 0-5, home visits, parenting education and respite care; citywide.

FOSTER CARE PROGRAMS

Boys & Girls Aid ✨ Supportive services focused on preparing youth and families for legal permanency. Serves youth in foster care, ages 14 and older; citywide.

Friends of the Children ✨ Intensive, year-round mentoring services for children in foster care. Includes home visits with foster parents. Recruitment into services begins for children age 5; citywide.

Impact Northwest ✨ Home visiting, parenting support and case management for children in foster care, ages 0-8 years old, and their birth and foster parents. Services focus on reunification; citywide.

Janus Youth Programs/Insights ✨ Case management and in-home parent education for parents ages 14 and up, and their children, where either the parent and/or the child is in foster care; citywide.

NAYA Family Center ✨ Advocacy and enrichment services for Native American/ Native Alaskan youth, ages 0-24, who are in foster care or have aged out of foster care; citywide.

New Avenues for Youth ✨ College preparation and support services for youth, ages 17-24, who are in foster care or aged out of foster care. Leadership development, college housing, case management and leadership coaching during their freshman year of college; citywide.

Self Enhancement, Inc. ✨ Advocacy/ case management, enrichment activities & academic support for African American youth, ages 7-19, who are in foster care; N, NE Portland.

Youth Rights & Justice: Attorneys at Law ✨ Educational advocacy, for children in foster care ages 4-21, focus on ensuring children receive appropriate instructions and other supports to address academic, emotional, and behavioral needs of each child; citywide.

HUNGER RELIEF PROGRAMS

Immigrant & Refugees Community Organization ✨ Increase access to emergency food at four schools; E Portland.

Janus Youth Programs ✨ Providing access for families to buy or grow healthy, culturally appropriate food; N Portland.

Meals on Wheels ✨ Home-delivered meals to nutritionally at-risk families; citywide.

Metropolitan Family Service ✨ Increase access to emergency food at 10 schools; E Portland.

Oregon Food Bank ✨ Expansion/ creation of 16 school food pantry sites, produce distribution at three summer feeding sites, classes in nutrition, cooking, gardening and food budgeting; E Portland.



THANK YOU
Portland



Investing in our future

portland
children's
levy

