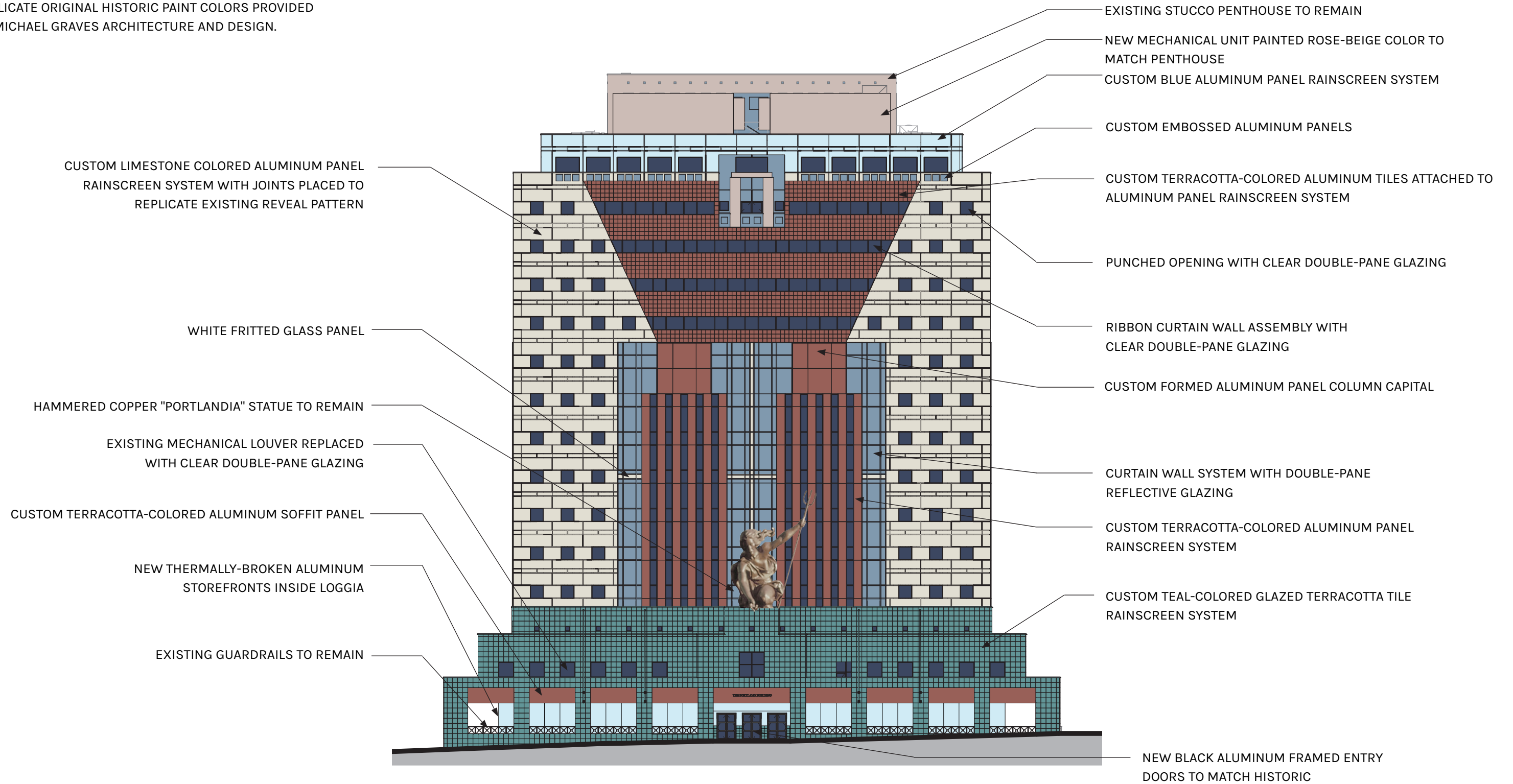
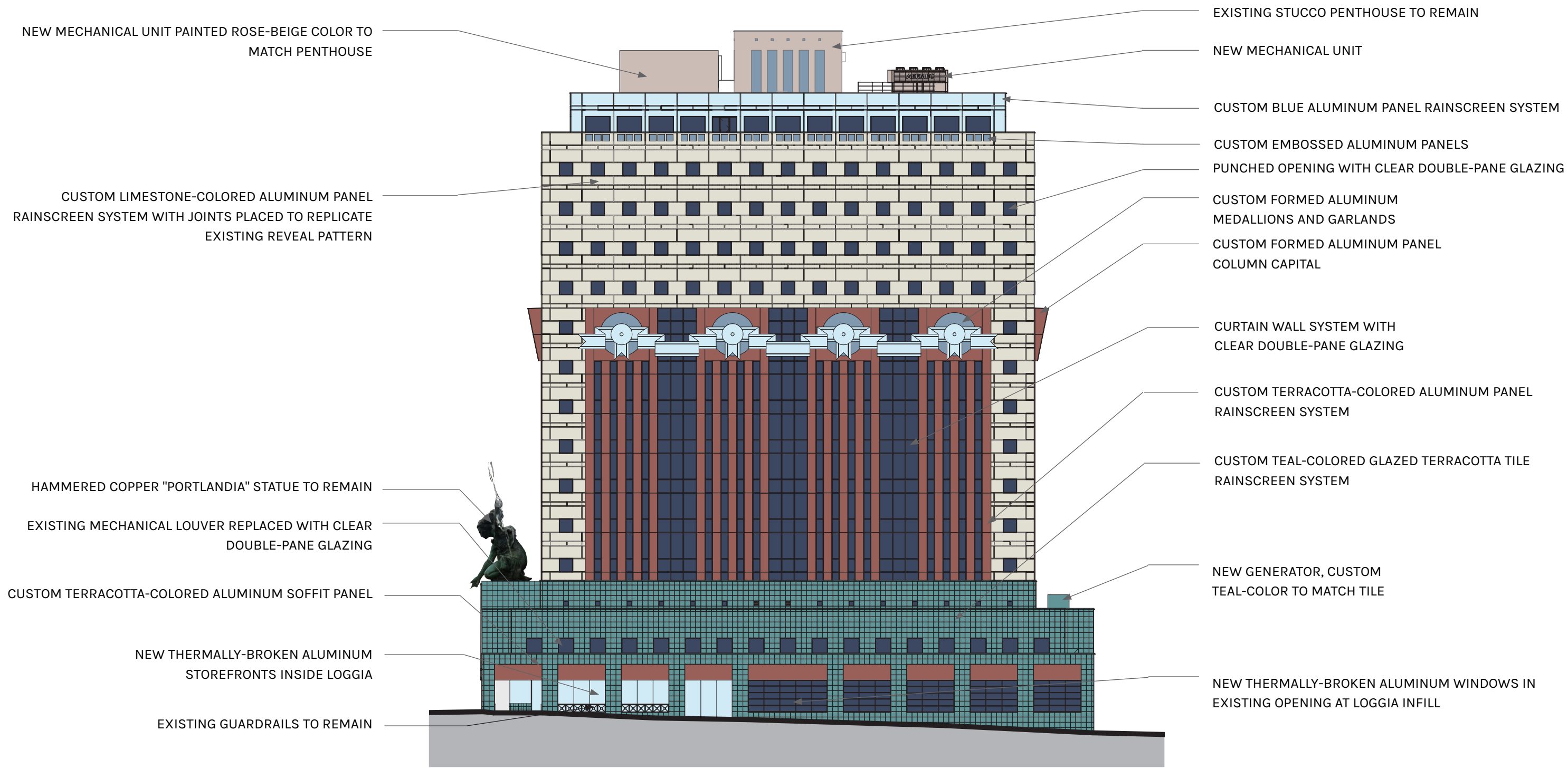


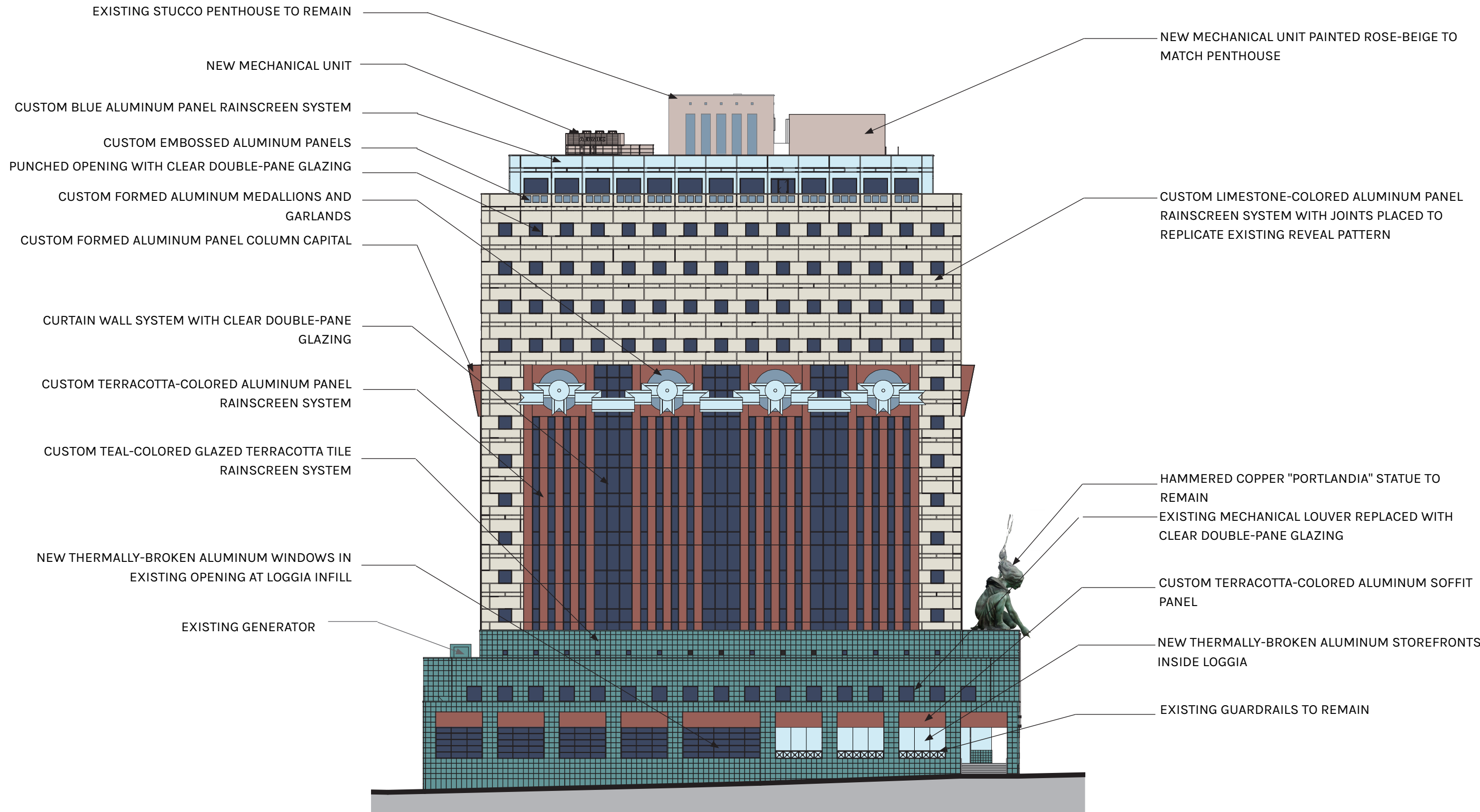
NOTE: PROPOSED COLORS ARE INTENDED TO BETTER REPLICATE ORIGINAL HISTORIC PAINT COLORS PROVIDED BY MICHAEL GRAVES ARCHITECTURE AND DESIGN.



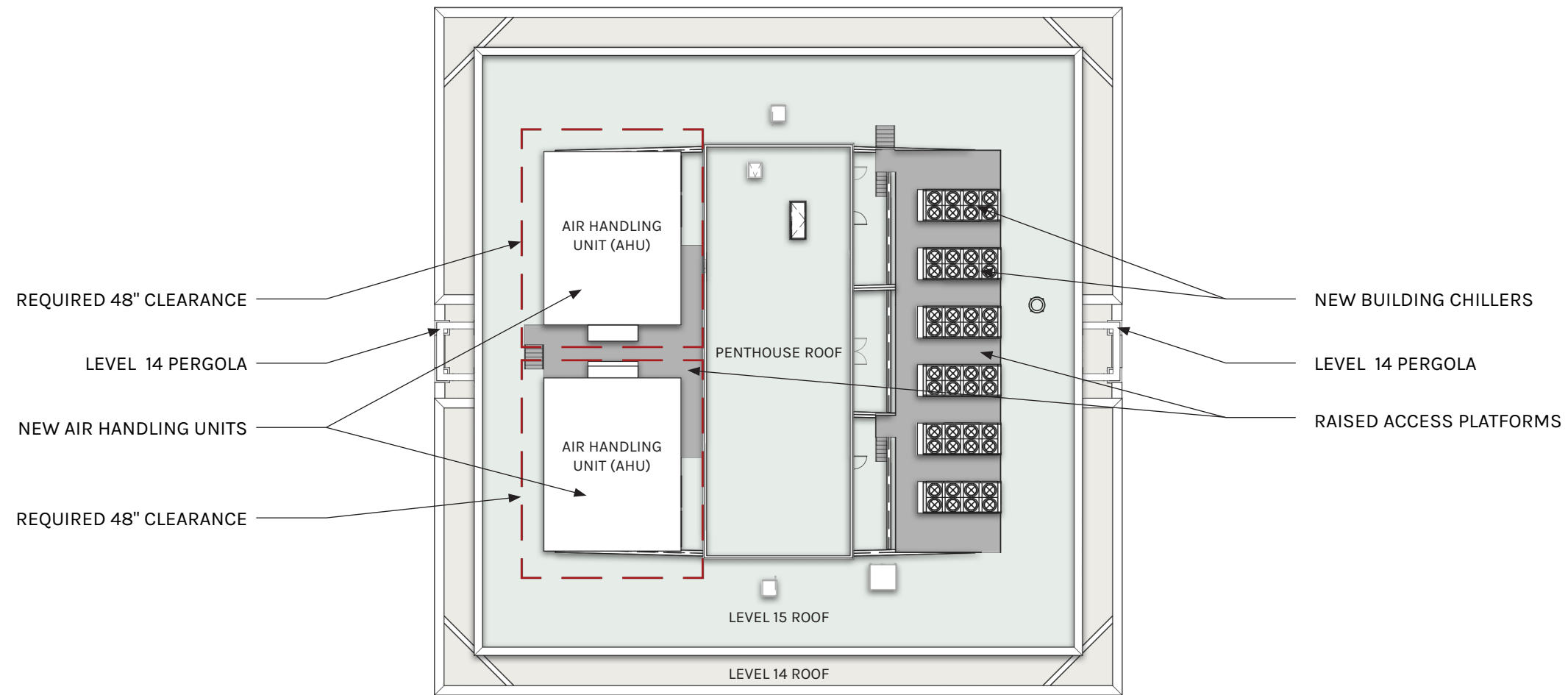
PROPOSED ELEVATION MATERIALS - WEST



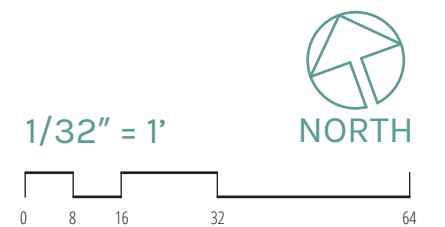
PROPOSED ELEVATION MATERIALS - SOUTH



PROPOSED ELEVATION MATERIALS - NORTH



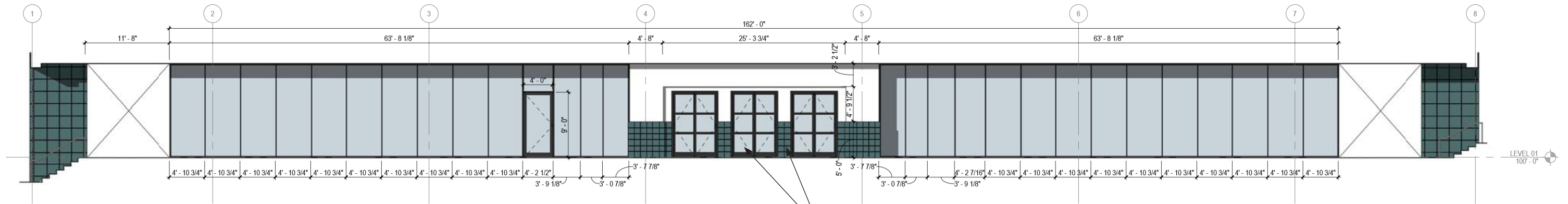
UPPER LEVEL ROOF PLAN



MAIN ROOF CONCEPT PLAN (FOR REFERENCE)

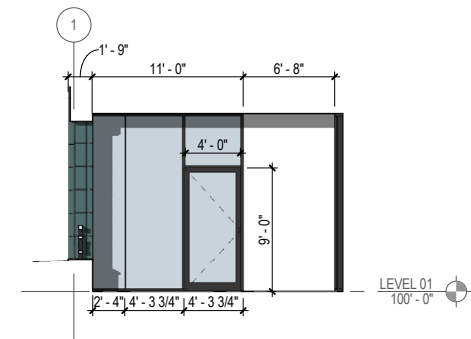


5TH AVENUE LOGGIA - PROPOSED



New aluminum framed entry doors to match original historic configuration and Existing historic tile to remain.

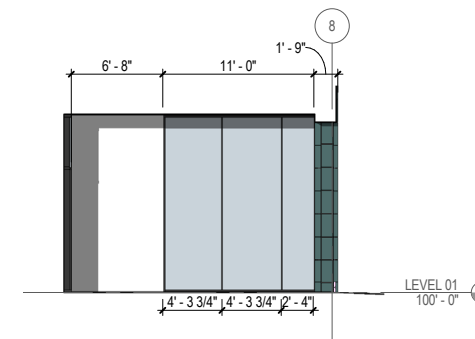
Loggia - West Elevation



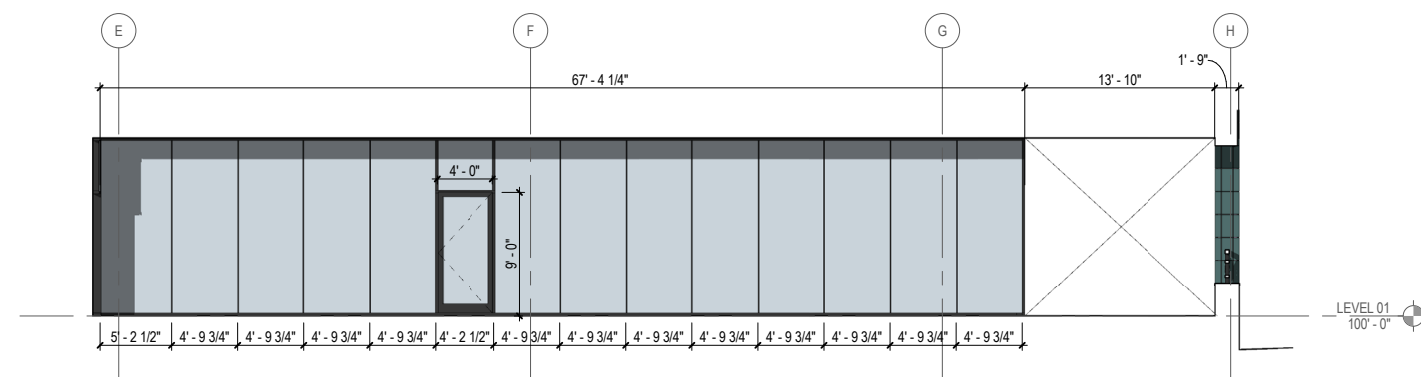
- Kawneer 1600 System 2
- Butt-glazed vertical mullions Typ.
- Typical mullion with caps at storefront door frames.
- Color of mullions - Dark Grey

Loggia - Daycare Entry Elevation

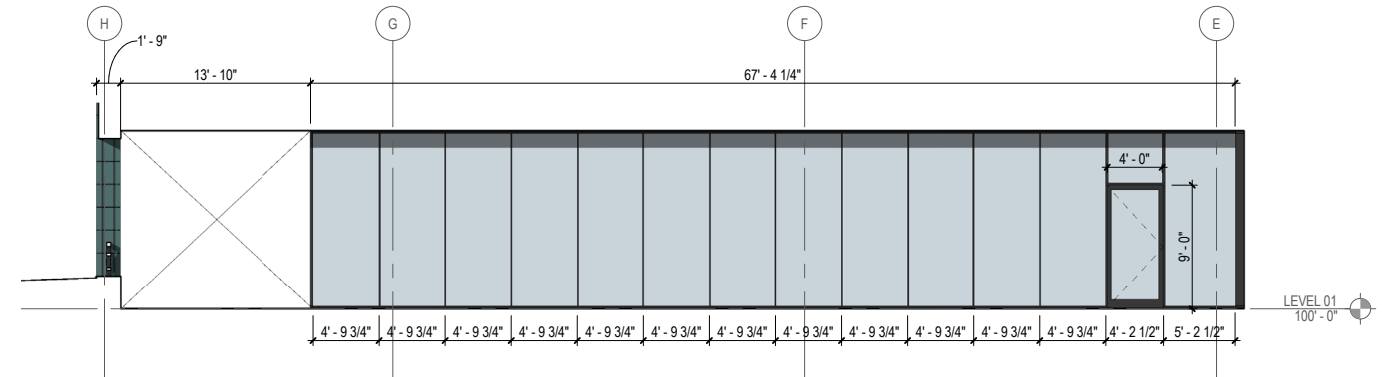
System Description



Loggia - Conference Elevation

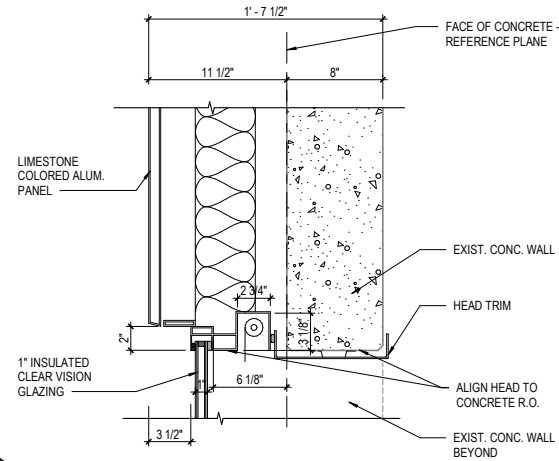


Loggia - North Main St. Elevation

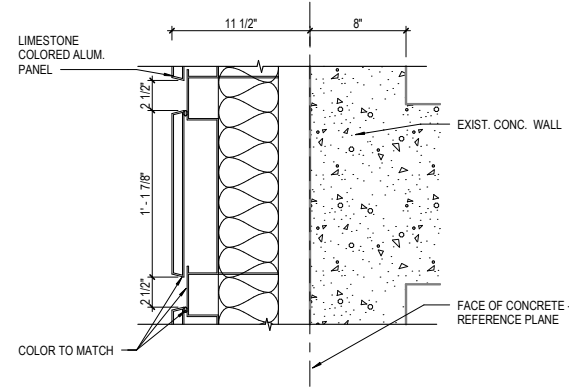


Loggia - South Madison St. Elevation

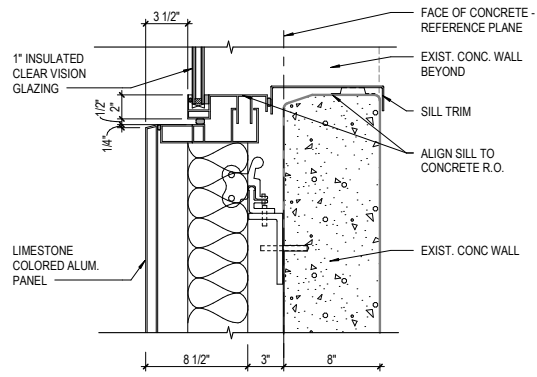
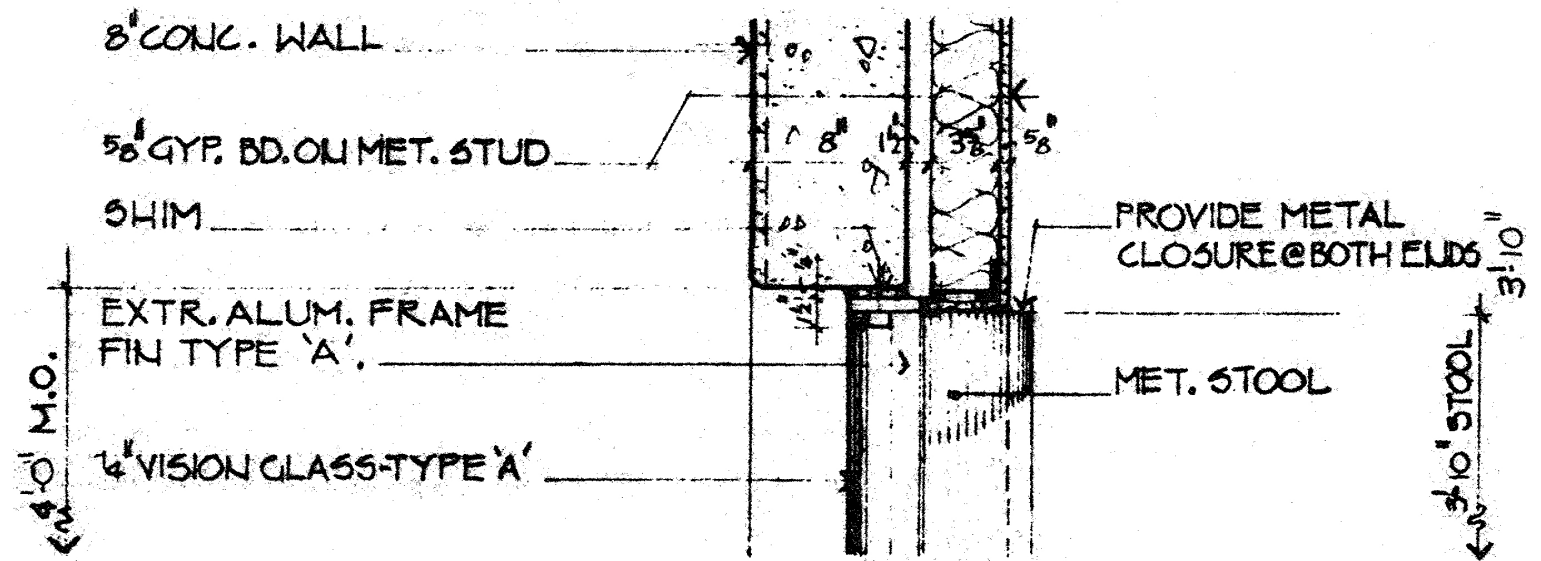
PROPOSED LOGGIA - ELEVATIONS



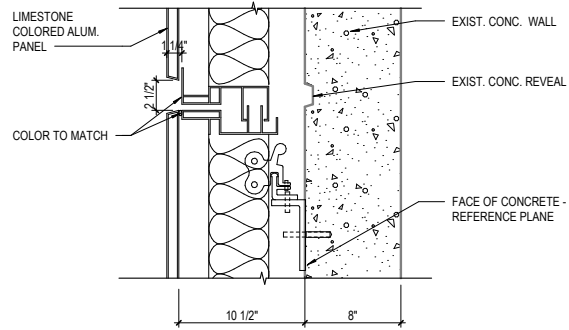
E WALL TYPE "B" - HEAD AT PUNCHED OPENING
NOT TO SCALE



F WALL TYPE "B" - NARROW HORIZONTAL PANEL
NOT TO SCALE

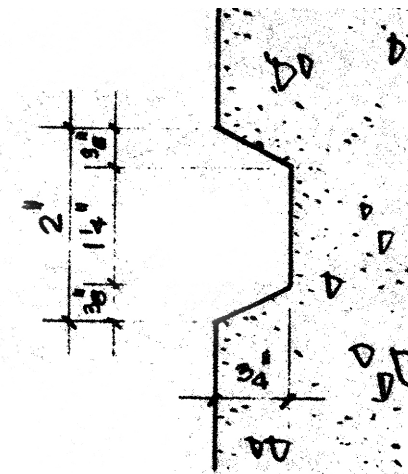


G WALL TYPE "B" - SILL AT PUNCHED OPENING
NOT TO SCALE

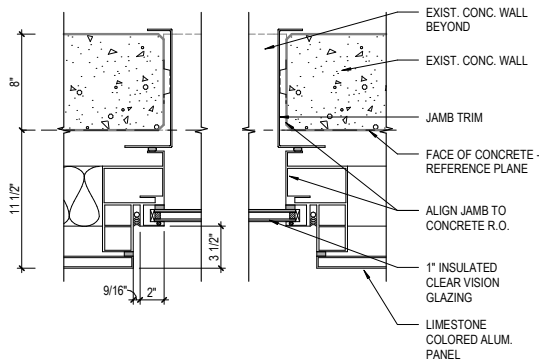


H WALL TYPE "B" - STACK JOINT AT REVEAL
NOT TO SCALE

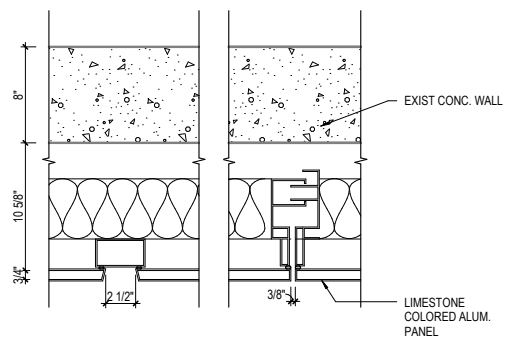
1 EXISTING JAMB DETAIL AT PUNCHED WINDOW
NOT TO SCALE



2 EXISTING REVEAL DETAIL
NOT TO SCALE

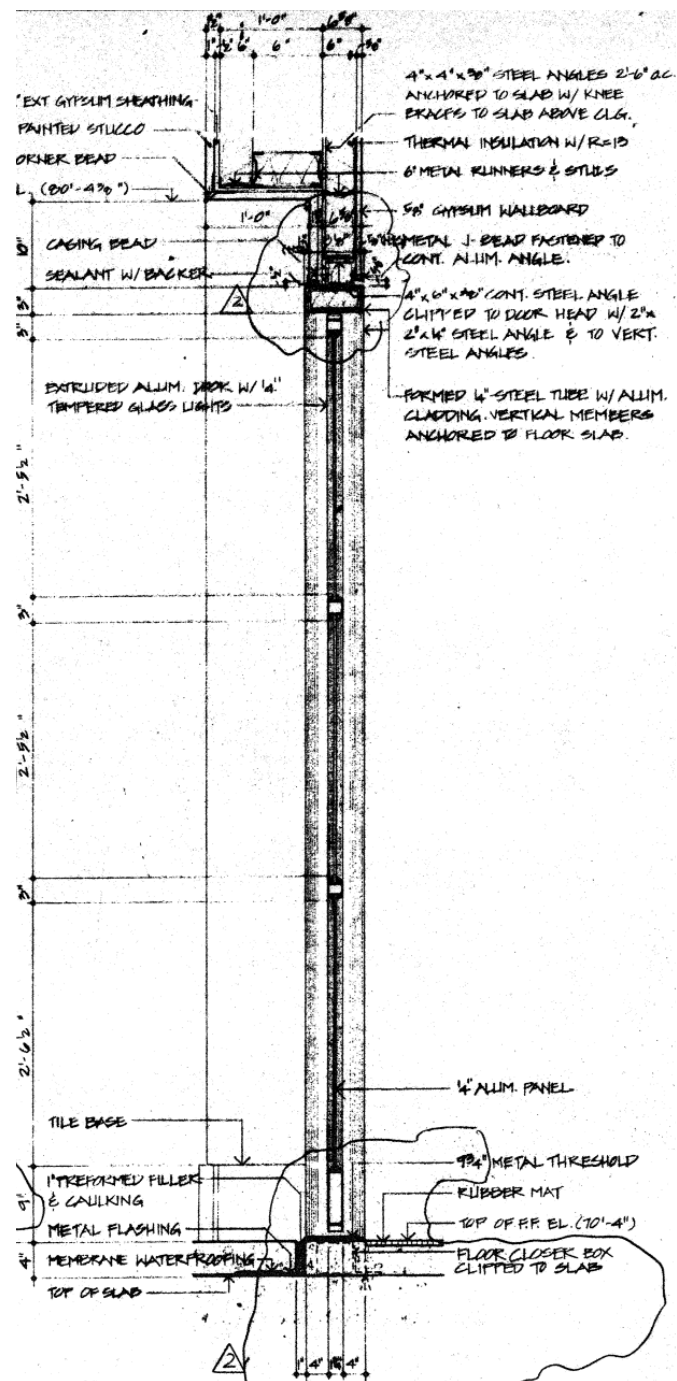


J WALL TYPE "B" - JAMB AT PUNCHED OPENING
NOT TO SCALE

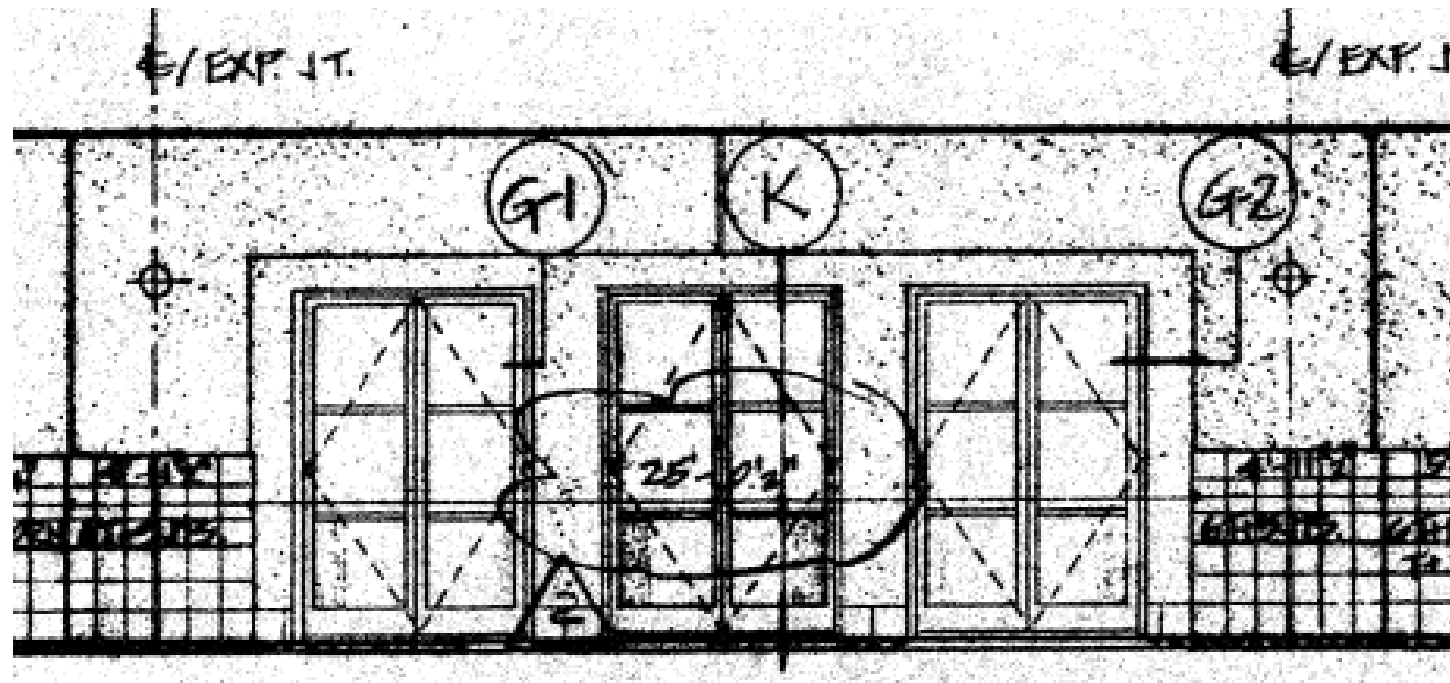


K WALL TYPE "B" - MAJOR AND MINOR PANEL JOINTS
NOT TO SCALE

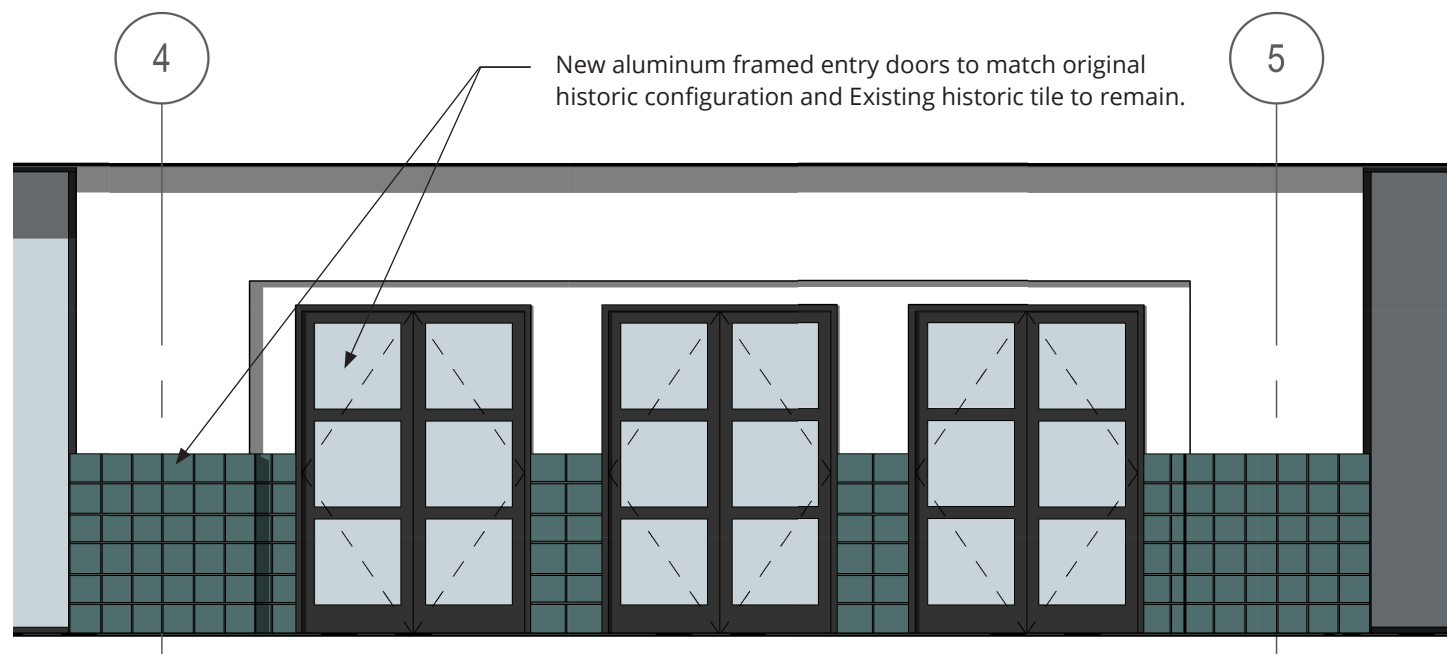
FACADE DETAILS



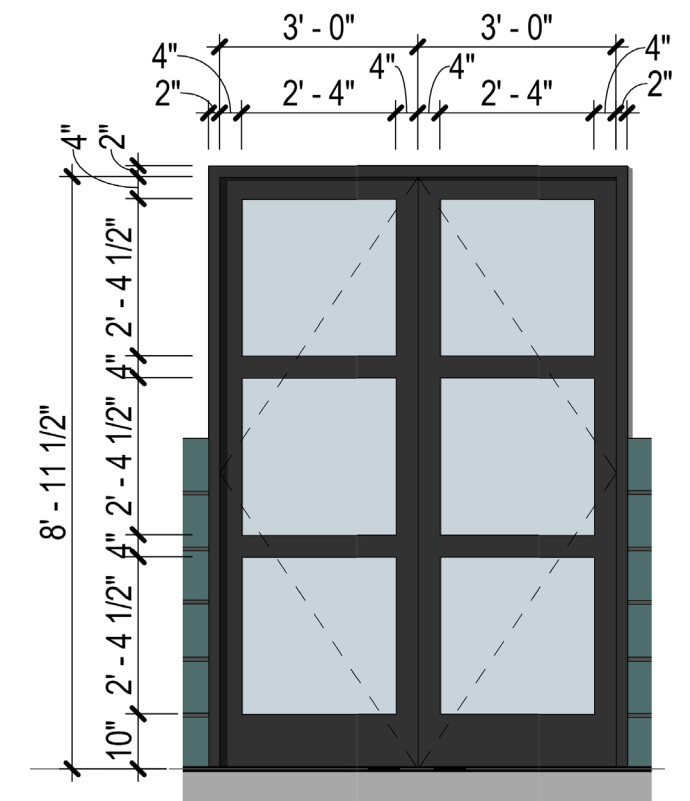
ORIGINAL ENTRY DOOR DIMENSION/ MATERIALS FROM 1980 CONSTRUCTION DRAWINGS



ORIGINAL ENTRY DOORS FROM 1980 CONSTRUCTION DRAWINGS



PROPOSED NEW ENTRY DOORS



PROPOSED ENTRY DOOR DIMENSIONS

MAIN ENTRY DOOR DETAILS



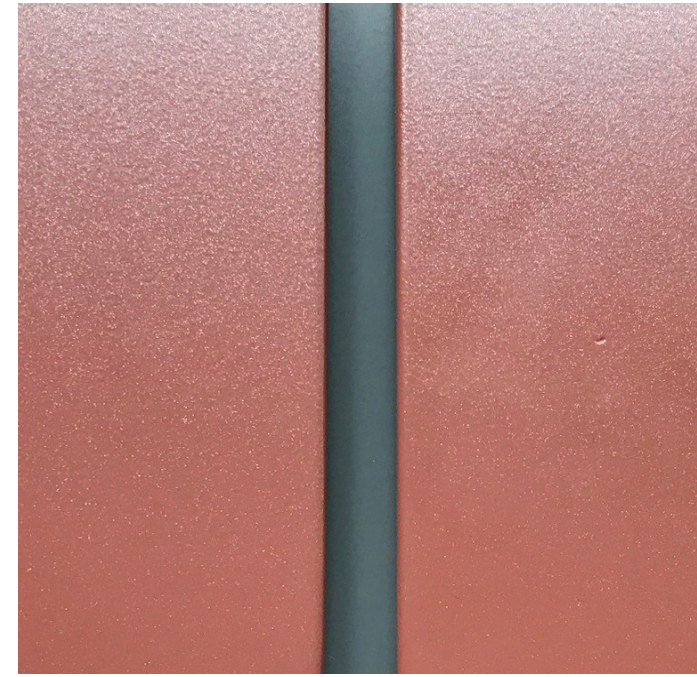
PANELS AT TOWER

Material: 3mm Formed Aluminum
Finish: Kynar Coating
Color: To match original paint sample provided by MGAD



PANELS AT COLUMNS AND CAPITALS

Material: 3mm Formed Aluminum
Finish: Kynar Coating
Color: To match original terracotta-colored tile



TILES AT KEYSTONE

Material: 1/4" Aluminum Plate over 3mm Formed Aluminum
Finish: Kynar Coating
Color: To match original terracotta colored tile



TERRACOTTA TILE RAINSCREEN

Finish: Semi-Matte Glaze to match existing
Color: Custom to match existing
Joint Treatment: Charcoal Grey Silicone with Sanded Surface



PANELS AT 15TH FLOOR

Material: 3mm Formed Aluminum
Finish: Kynar Coating
Color: Benjamin Moore - Watercolor



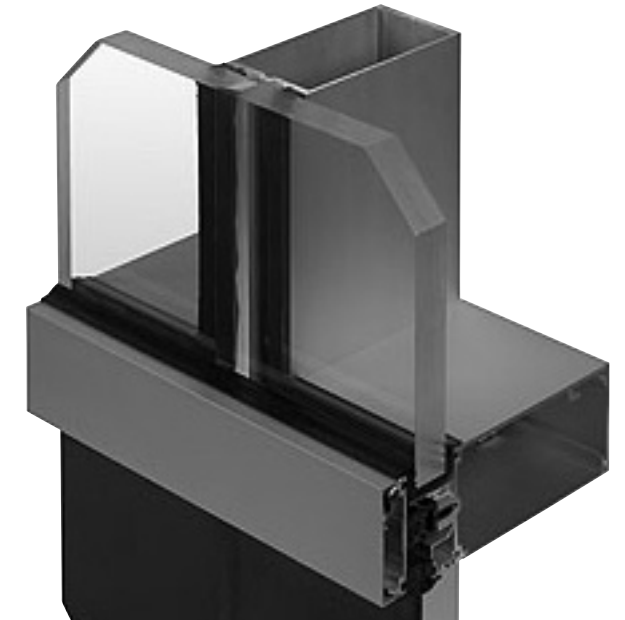
MEDALLIONS AND GARLANDS

Material: 3mm Formed Aluminum
Finish: Kynar Coating
Color: Benjamin Moore - Watercolor (light) and Blue Nose (Dark)



TYPICAL WINDOW FRAMES

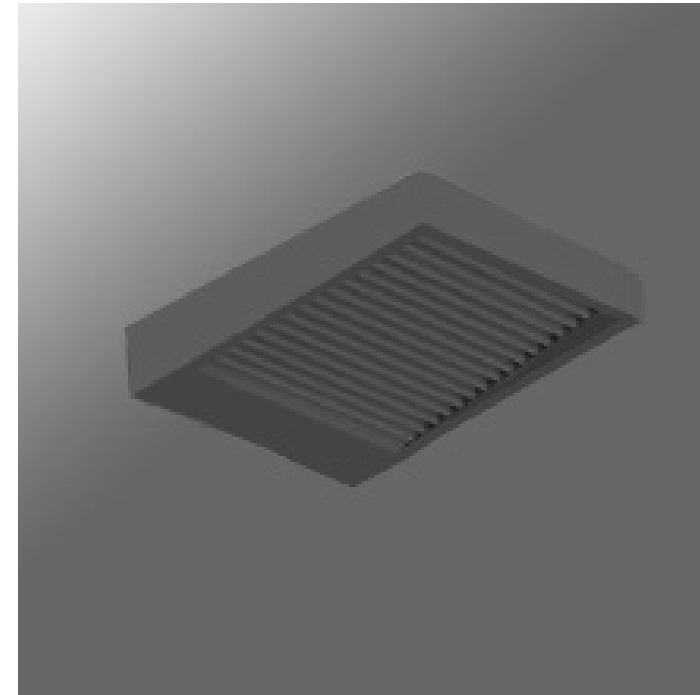
Material: Aluminum with Captured Frames
Finish: Kynar Coating
Color: Black



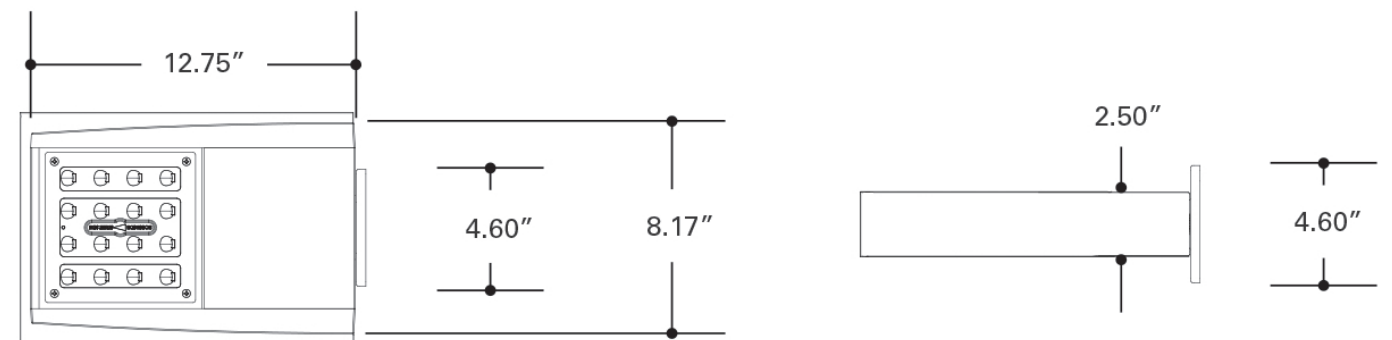
LOGGIA DOOR AND WINDOW FRAMES

Material: Aluminum w/ silicone joints at verticals
Finish: Kynar Coating
Color: Black

PROPOSED MATERIALS AND COLORS

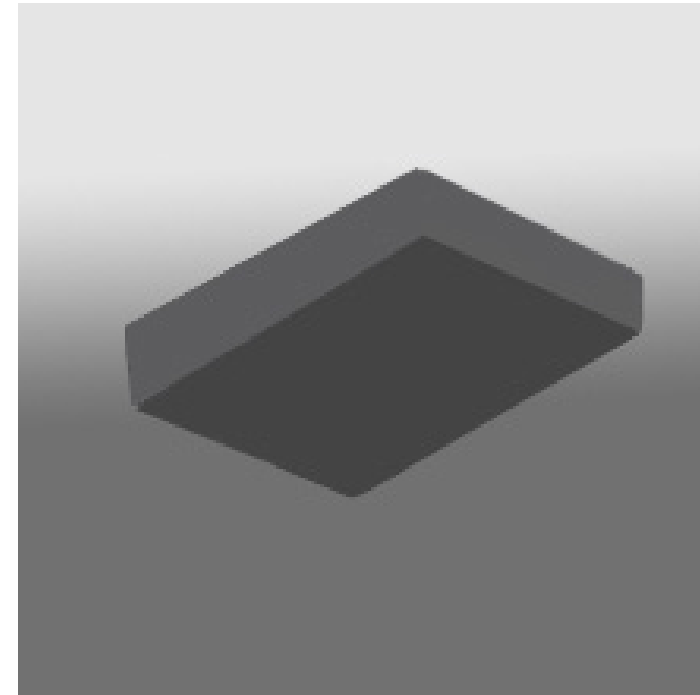


*Ametrix ASYX 2-WM S1 (With Custom Shroud): 3D View
(Shroud covering sides and bottom)*

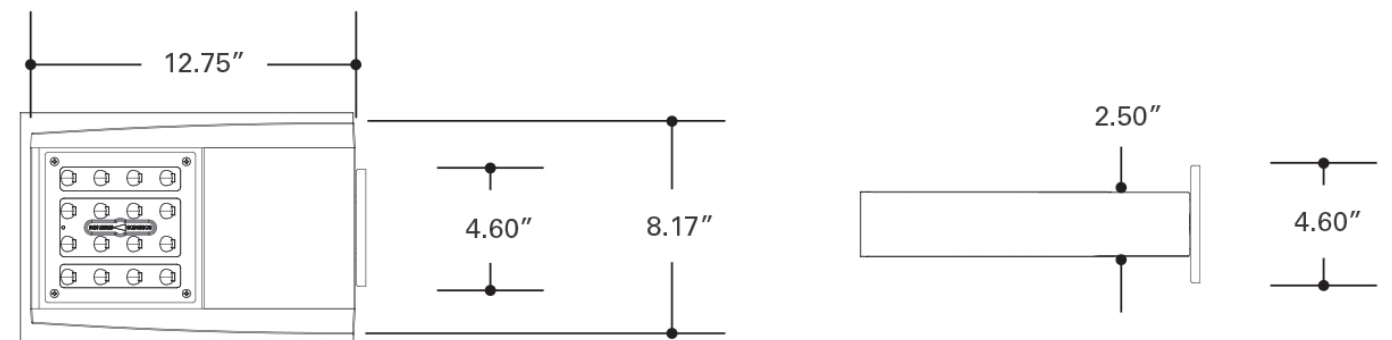


Ametrix ASYX 2-WM S1 (With Custom Shroud): Product Dimensions

LOGGIA LIGHTING: OPTION A - AMETRIX ASYX 2 WITH CUSTOM SHROUD (COVERING SIDES ONLY)

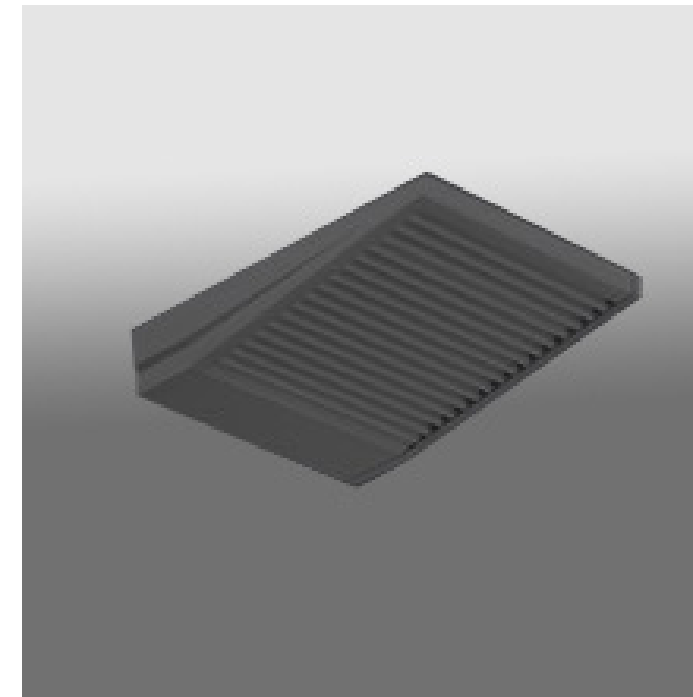


*Ametrix ASYX 2-WM S1 (With Custom Shroud): 3D View
(Shroud covering sides and bottom)*

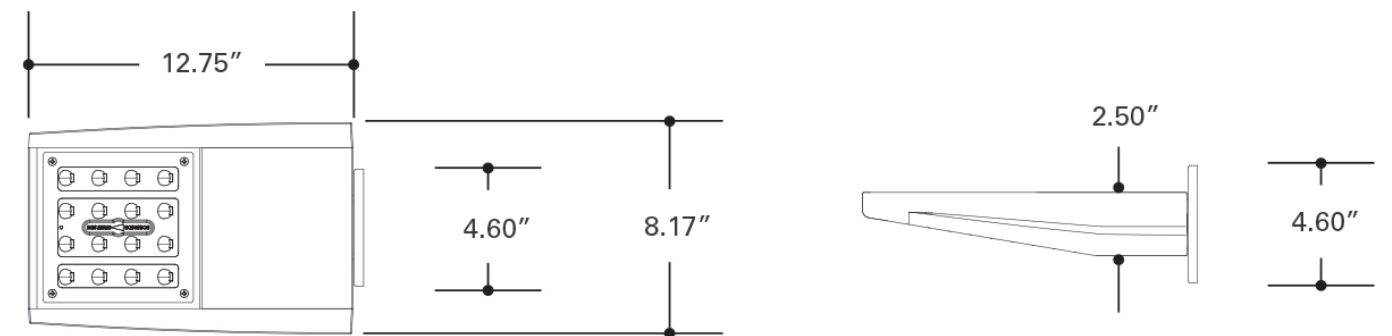


Ametrix ASYX 2-WM S1 (With Custom Shroud): Product Dimensions

LOGGIA LIGHTING: OPTION A - AMETRIX ASYX 2 WITH CUSTOM SHROUD (COVERING SIDES AND BOTTOM)



Ametrix ASYX 2-WM S1: 3D View (No shroud)

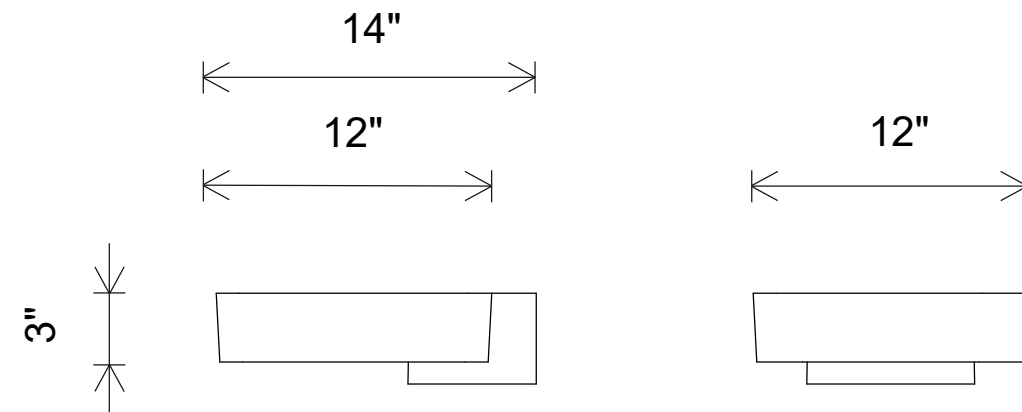


Ametrix ASYX 2-WM S1: Product Dimensions

LOGGIA LIGHTING: OPTION B (NO SHROUD)



ERCO Lightscan: 3D View



ERCO Lightscan: Product Dimensions

LOGGIA LIGHTING: OPTION C - ERCO LIGHTSCAN