

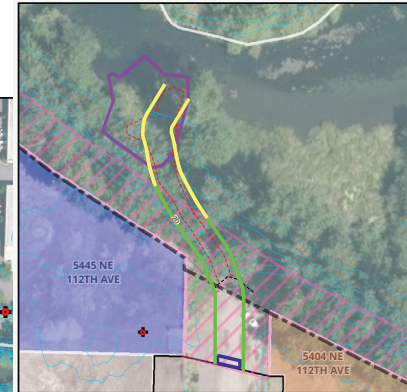


PBOT
PORTLAND BUREAU OF TRANSPORTATION

NE Deering Drive/NE Marx Street Area Map



0 50 100 Feet



LEGEND

- NE Deering Drive potential vacation area
- NE Marx Street proposed vacation area
- Proposed 20' MCDD access with easement
- Proposed 20' MCDD access without easement
- MCDD vehicle gate
- Homeless Encampment Area: 3122 Sq Ft, 100% outside and to northeast of street vacation area.

Properties abutting vacation area

- | | |
|--------------------------|------------|
| Walsh | Patel |
| River City Environmental | Marx LLC |
| Payne Construction | Bakke |
| Wolf Family LLC | McCutcheon |

Existing Features

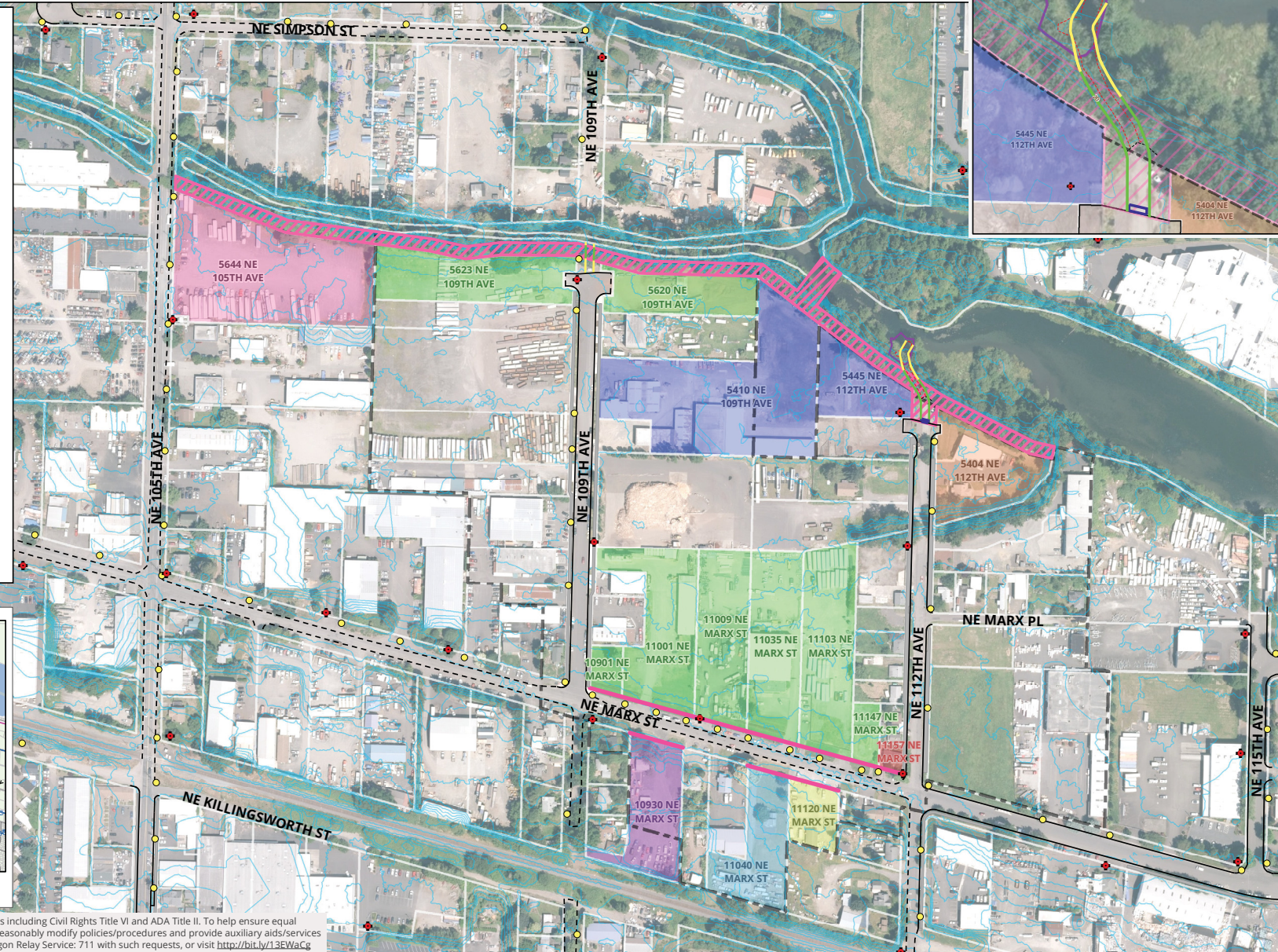
- | | |
|---------------------------|-------------------------|
| LID boundaries | Existing edge of gravel |
| Existing sidewalks | Hydrants - fire |
| Existing curbs | Street lights |
| Existing edge of pavement | 2' and 10' contours |

Overview Map

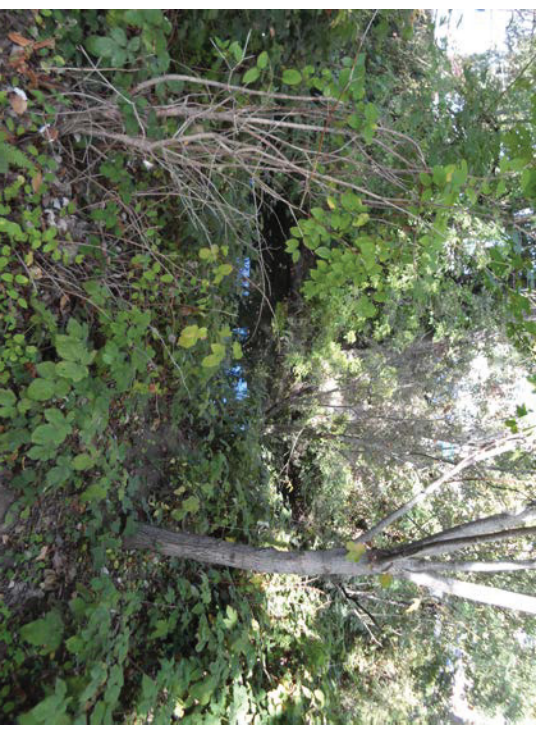


- | | | |
|--------------|----------------------|----------------------|
| Subject Area | TriMet Transit Stops | TriMet Transit Lines |
| Map Extent | | |

The City of Portland complies with all non-discrimination, Civil Rights laws including Civil Rights Title VI and ADA Title II. To help ensure equal access to City programs, services and activities, the City of Portland will reasonably modify policies/procedures and provide auxiliary aids/services to persons with disabilities. Call 503-823-5185, TTY 503-823-6868 or Oregon Relay Service: 711 with such requests, or visit <http://bit.ly/13EWaCg>

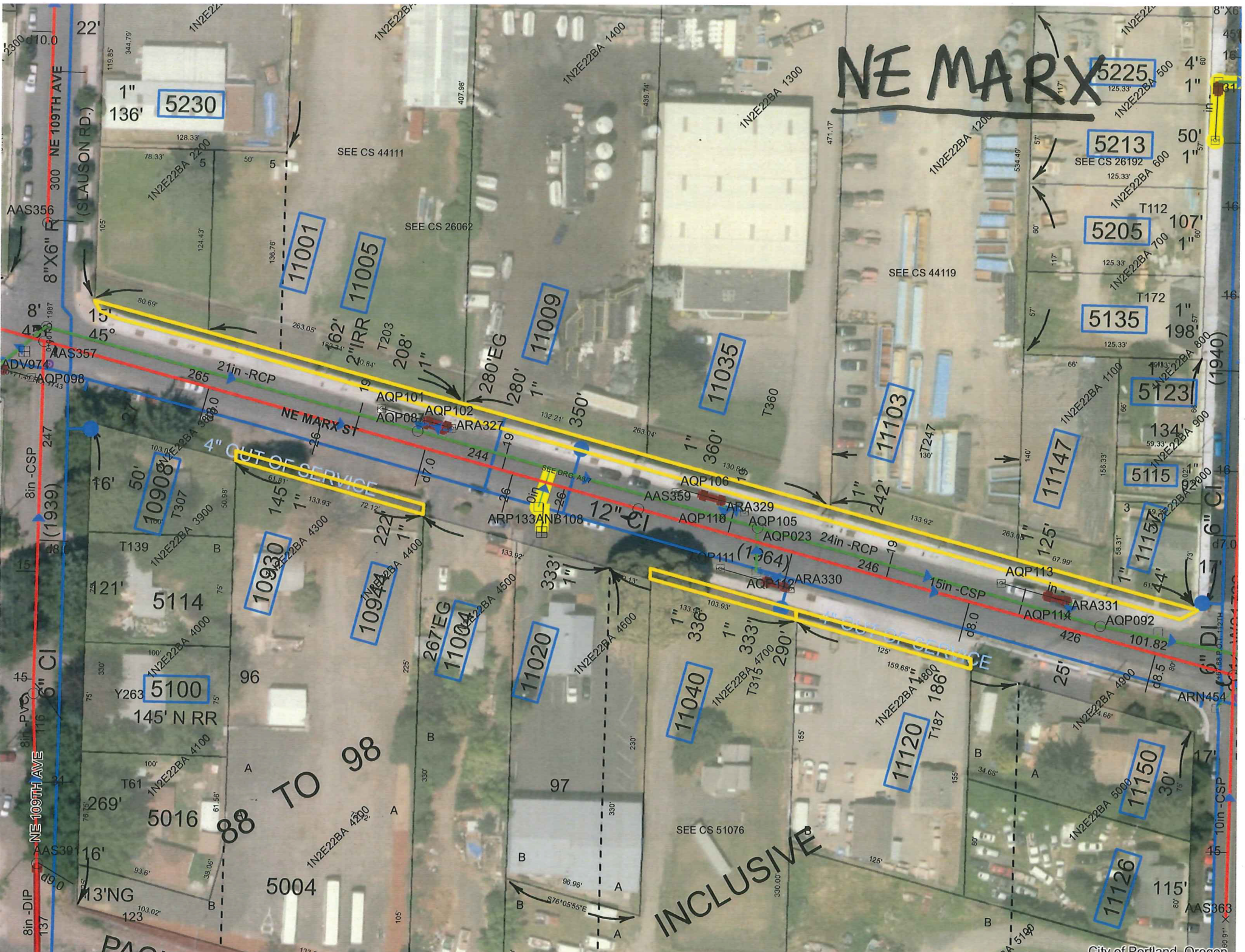


NE Dering Drive



NE Marx Street

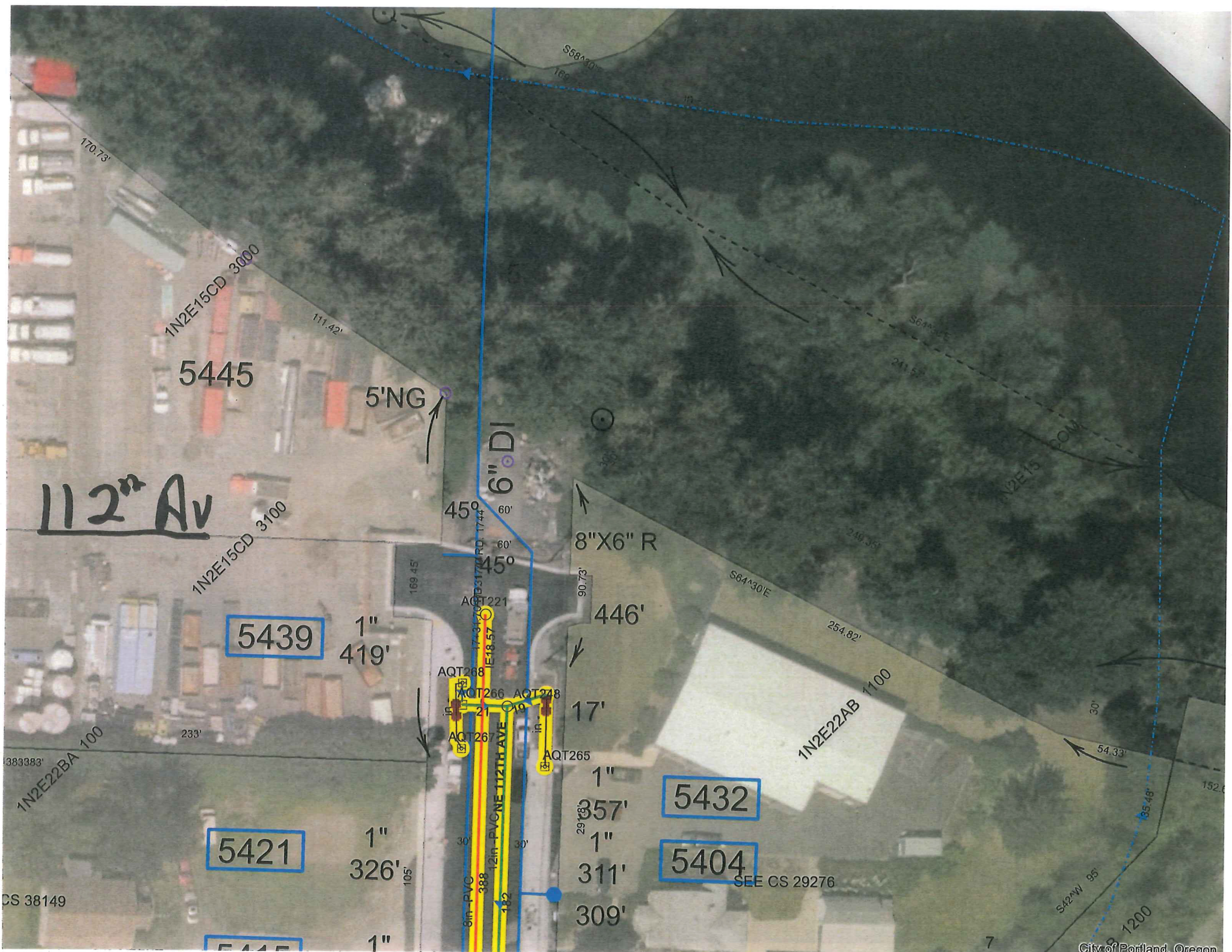




NE MARX

88 TO 98

INCLUSIVE



112nd Av

5445
1N2E15CD 3000
111.42'

5439
1" 419'

5421
1" 326'

5415
1"

6" DI

45° 60'
45° 60'
AQT221
17.3170' RD 17.44'

AQT268
AQT266 AQT248
AQT267
AQT265

6in-PVC 388
12in-PVC NE 112TH AVE 182

8"X6" R
446'

17'
1" 357'
1" 311'
309'

5432

5404

SEE CS 29276

1N2E22AB 1100