

# Street Tree Inventory Report



Portland Parks & Recreation Urban Forestry  
Jenn Cairo, City Forester  
Angie DiSalvo, Outreach and Science Supervisor  
[www.portlandoregon.gov/parks/treeinventory](http://www.portlandoregon.gov/parks/treeinventory)

May 10, 2017



**PORTLAND PARKS & RECREATION**  
Healthy Parks, Healthy Portland

[www.PortlandParks.org](http://www.PortlandParks.org)

# Urban Forestry's mission statement:

“...to preserve and ensure the urban forest and the services it provides for current and future generations of Portland residents.”





# All Portlanders need trees



***Public health***



***Climate resilience***



***Livability***



***Services***



***Safety***



***Beauty***





# Street trees:

a privately maintained  
public resource





# Inventory is key to forest management



“Shade tree planting can be much more effective if based upon a plan.”

– Works Progress Administration, Portland’s first street tree inventory, 1938







**Portland's Street Tree Inventory**  
 220,000 trees inventoried 2010-2016  
 1,300 volunteers  
 17,000 hours volunteered





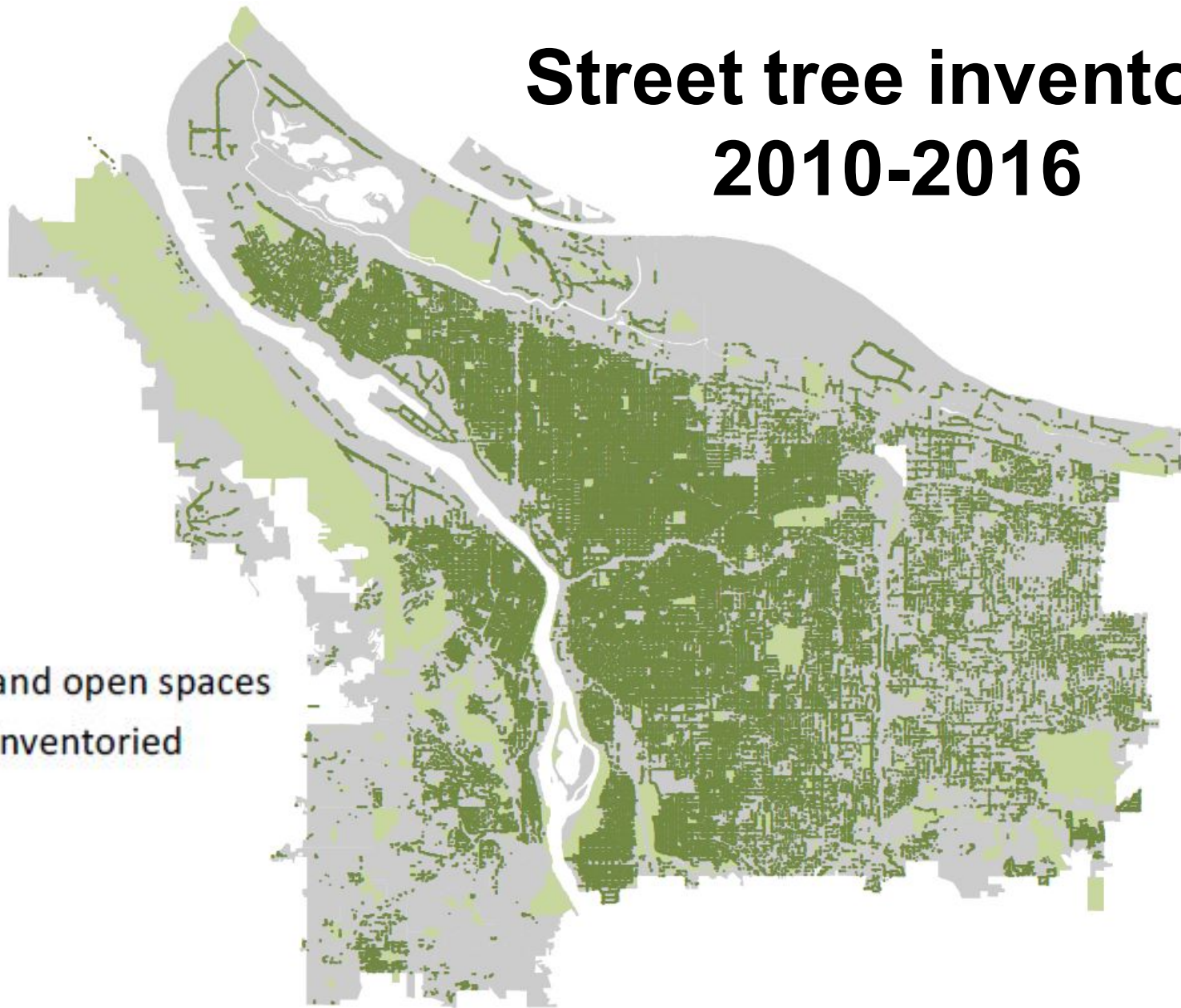
# Inventory Method



- Organized by neighborhood groups
- Data collected by volunteers
  - species/type
  - size (DBH – diameter at breast height)
  - condition rating
  - location
  - planting site type, width, presence of high voltage wires
- Data accuracy >95%
  - Training, accuracy checks, volunteer arborists



# Street tree inventory 2010-2016



Parks and open spaces

Trees Inventoried



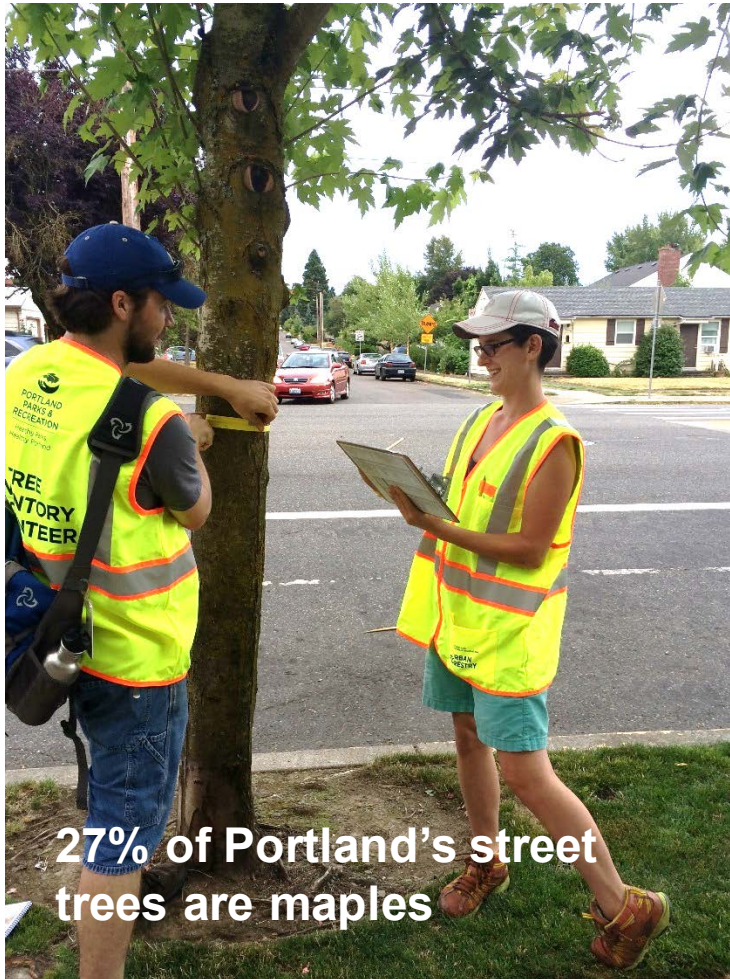
**PORTLAND PARKS & RECREATION**

Healthy Parks, Healthy Portland

[www.PortlandParks.org](http://www.PortlandParks.org)



# Key Findings

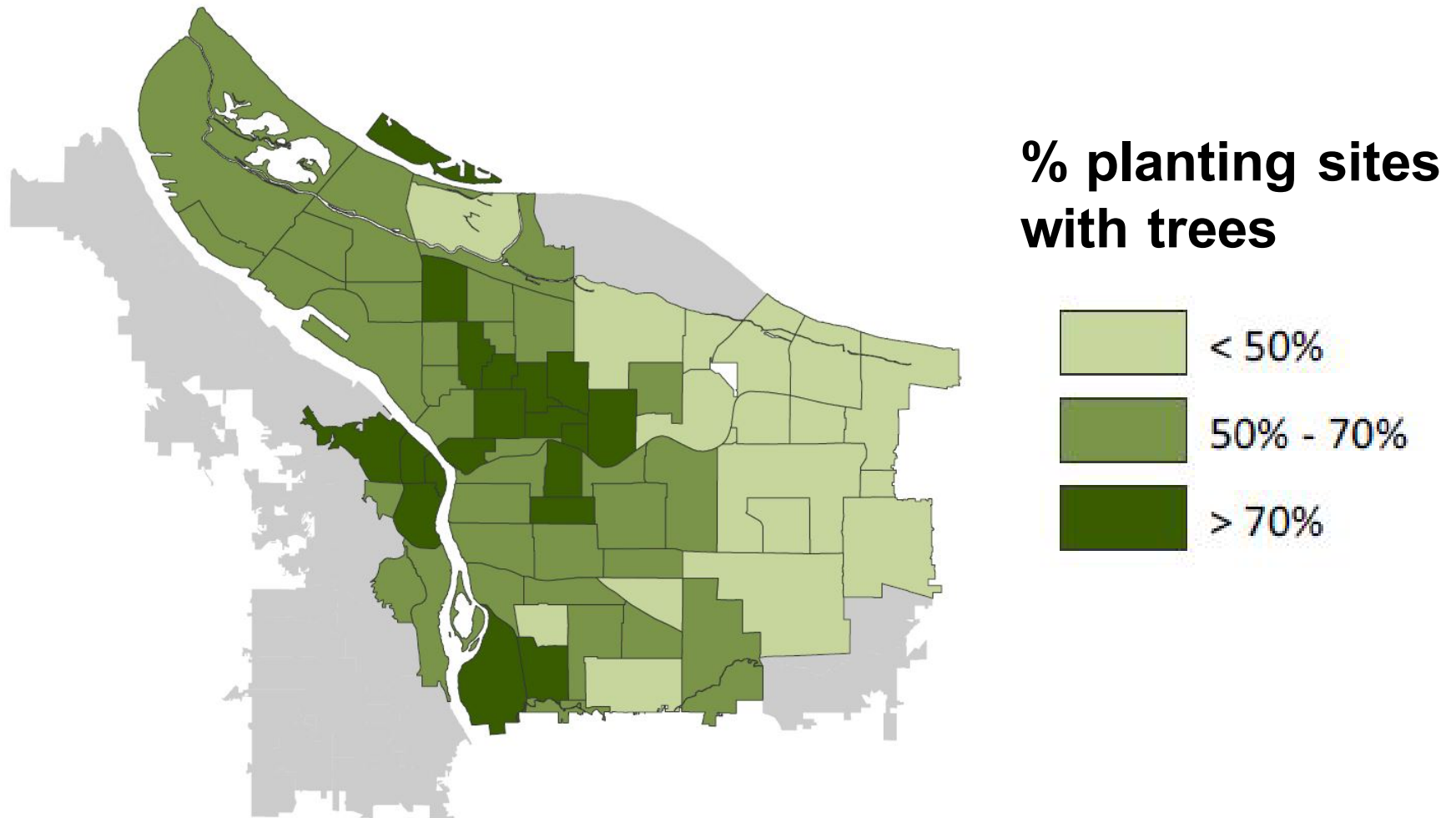


- Street trees are not equitably distributed
- Abundant opportunities for planting
- Overly reliant on a few tree types (*Acer*, *Prunus*)
- Few large, native, and evergreen trees
- Over 40% of trees are young and would benefit from early maintenance





# Street trees are not equitably distributed





# More diversity needed for resilience



- Overreliance on only a few species results in vulnerability to pests, pathogens, and changing climate
- Can result in catastrophic loss



*Hollywood neighborhood vulnerability map*





# Few large trees and many young trees



*Only 15% of trees are >18" in diameter*



*42% of street trees are <6" diameter*

Opportunity for inexpensive maintenance to prevent future problems and ensure return on investment





# Outcomes

- **Data used in policy, permits, management**
  - **Citywide Tree Planting Strategy**
- Online map, open data, reports
- Neighborhood Tree Plans created by volunteers; 35 neighborhood tree teams
- Young street tree pruning

## Approved Street Tree Planting Lists



Branch Out PDX

[HOME](#) [PROJECT](#) [GET INVOLVED](#) [PLANTING MAP](#) [CONTACT US](#)



Portland State University and Portland Parks & Recreation have partnered to evaluate ways to equitably increase Portland's urban tree canopy



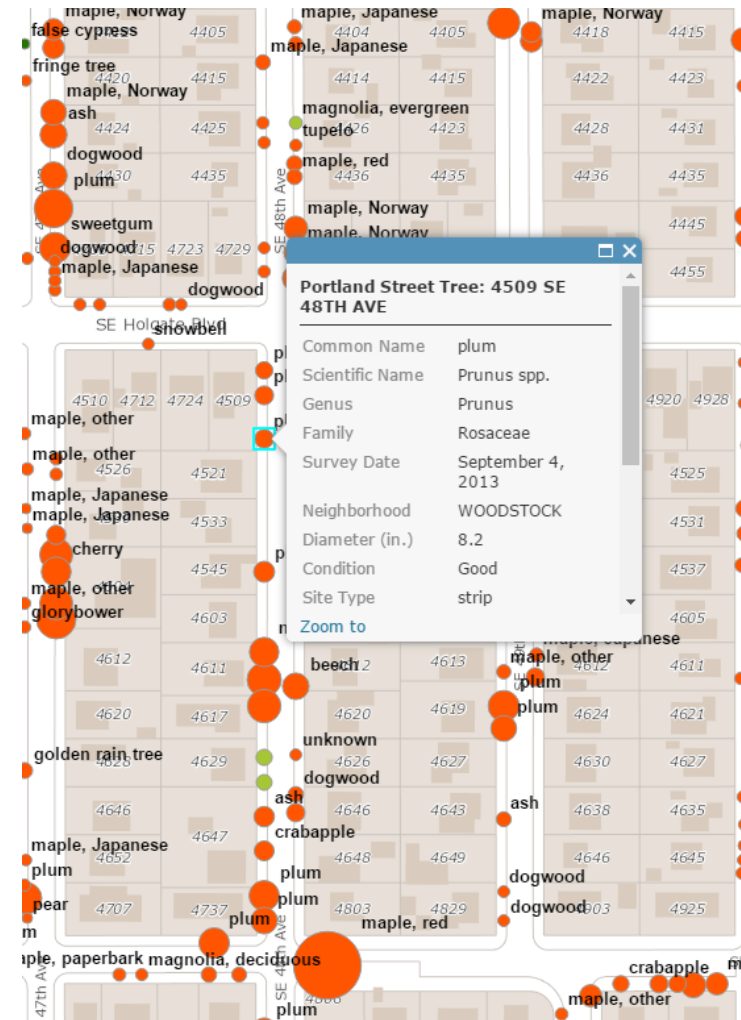
**PORTLAND PARKS & RECREATION**  
Healthy Parks, Healthy Portland

[www.PortlandParks.org](http://www.PortlandParks.org)



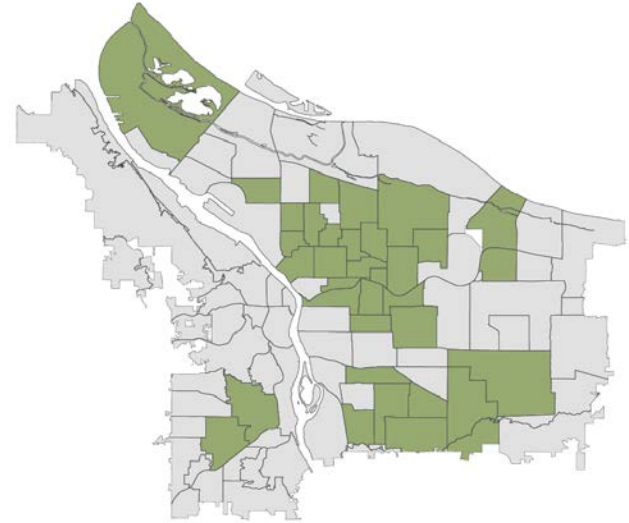
# Outcomes

- Data used in policy, permitting, management
  - Citywide Tree Planting Strategy
- **Online map, open data, reports**
- Neighborhood Tree Plans created by volunteers; 35 neighborhood tree teams
- Young street tree pruning



# Outcomes

- Data used in policy, permitting, management
  - Citywide Tree Planting Strategy
- Online map, open data, reports
- **Neighborhood Tree Plans created by volunteers; 35 neighborhood tree teams**
- Young street tree pruning



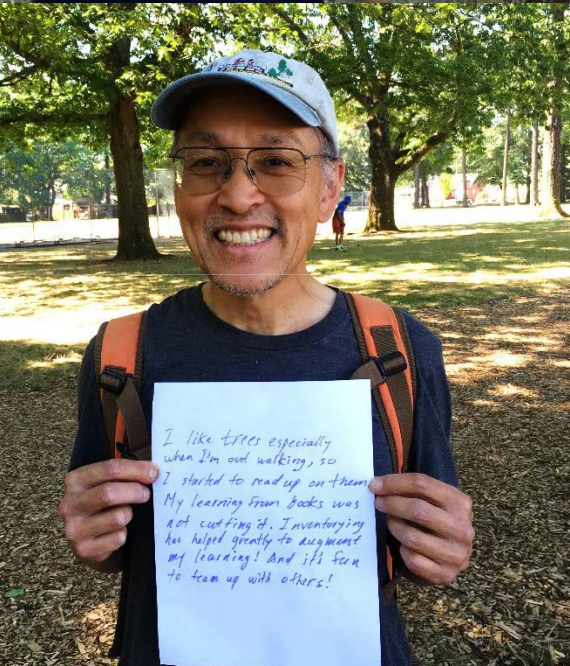
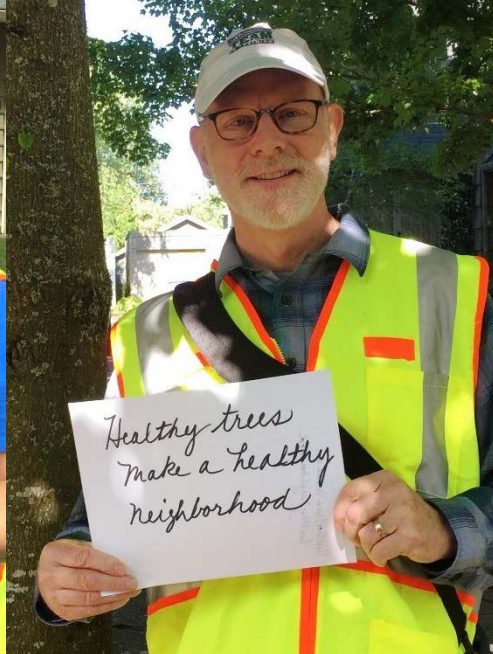


# Outcomes

- Data used in policy, permitting, management
  - Citywide Tree Planting Strategy
- Online map, open data, reports
- Neighborhood Tree Plans created by volunteers; 35 neighborhood tree teams
- **Young street tree pruning**







**PORTLAND PARKS & RECREATION**  
Healthy Parks, Healthy Portland

**Thank you!**

[www.PortlandParks.org](http://www.PortlandParks.org)