

PARKS REPLACEMENT BOND

CITY COUNCIL – May 10, 2017



Commissioner Amanda Fritz | Director Mike Abbaté

SEVEN FOCUS AREAS

2014 Parks Replacement Bond provides \$68 million for repairs and replacements across the system. (74% yes vote)

2014 PARKS REPLACEMENT BOND

2014 PARKS REPLACEMENT BOND
ParksReplacementBond.org
NO INCREASE IN TAX RATES

FOCUS AREAS

Areas of focus with broad public support and identified as urgent needs by the Parks Board are additional one-pagers for details on each area.

PLAYGROUNDS

Playgrounds are the heart of many parks and are critical for children's health and safety. The 2014 Parks Replacement Bond will fund the replacement of playground equipment and the construction of new playgrounds.

BRIDGES AND TRAILS

Trail bridges are critical for providing access to parks and trails. The 2014 Parks Replacement Bond will fund the replacement of trail bridges and the construction of new trail bridges.

POOLS

Pools are a popular amenity in many parks and are critical for providing a safe place for children to play. The 2014 Parks Replacement Bond will fund the replacement of pool equipment and the construction of new pools.

PROTECTING WORKERS

Protecting workers is a critical priority for the Parks Board. The 2014 Parks Replacement Bond will fund the replacement of worker safety equipment and the construction of new worker safety equipment.

PIONEER COURTHOUSE SQUARE

Pioneer Courthouse Square is a critical area for providing a safe place for children to play. The 2014 Parks Replacement Bond will fund the replacement of Pioneer Courthouse Square equipment and the construction of new Pioneer Courthouse Square equipment.

ACCESSIBILITY

Accessibility is a critical priority for the Parks Board. The 2014 Parks Replacement Bond will fund the replacement of accessibility equipment and the construction of new accessibility equipment.

RESTROOMS / OTHER URGENT REPAIRS

Restrooms and other urgent repairs are critical for providing a safe place for children to play. The 2014 Parks Replacement Bond will fund the replacement of restroom equipment and the construction of new restroom equipment.

ADMINISTRATION & AUDITS

Administration and audits are critical for providing a safe place for children to play. The 2014 Parks Replacement Bond will fund the replacement of administration equipment and the construction of new administration equipment.

THE NEED

Over the last century, Portlanders have created and maintained our parks system through a series of capital investments, including bond measures and levies. However, our park structures and facilities have finite life spans, and require ongoing investment to remain safe and accessible. Portland Parks & Recreation (PPR) has identified more than \$365 million in necessary replacements and major maintenance projects that need to be completed over the next 10 years.



THE OPPORTUNITY

As Portland's last parks bond—passed in 1994—is paid off in 2015, we have the opportunity to address critical park needs without increasing tax rates. By continuing opportunity to address critical park needs without increasing tax rates. By continuing to fund parks at the current rate required by the 1994 bond, we can raise an estimated \$56-\$68 million in funding to address the most critical needs of our parks system.

65% SUPPORT

PUBLIC SUPPORT

Portland Commissioner Amanda Fritz and PPR Board member Amanda Fritz conducted a representative telephone survey of Portlanders. The survey shows that more than 65 percent of Portlanders are supportive once they find out that a Replacement Bond would not increase tax rates. The survey also shows that 74 percent of Portlanders support a Replacement Bond that would fund some of the most critical repairs to our parks system.

2014 PARKS REPLACEMENT BOND

NO INCREASE IN TAX RATES

POOLS

2014 PARKS REPLACEMENT BOND

NO INCREASE IN TAX RATES

BRIDGES & TRAILS

2014 PARKS REPLACEMENT BOND

NO INCREASE IN TAX RATES

PIONEER COURTHOUSE SQUARE

2014 PARKS REPLACEMENT BOND

NO INCREASE IN TAX RATES

PLAYGROUNDS

2014 PARKS REPLACEMENT BOND

NO INCREASE IN TAX RATES

PROTECT WORKERS

2014 PARKS REPLACEMENT BOND

NO INCREASE IN TAX RATES

RESTROOMS & URGENT REPAIRS

2014 PARKS REPLACEMENT BOND

NO INCREASE IN TAX RATES

ACCESSIBILITY

REMOVING BARRIERS TO ACCESS

Portland's parks and natural spaces belong to all of us—from playgrounds to community centers, and from trails to gardens, there's something for everyone in Portland's parks system. Unfortunately, not everyone has equal access to what Portland's parks have to offer. A preliminary accessibility assessment has already identified more than 20,000 barriers to access in our parks. Missing handrails, inaccessible paths, outdated playground equipment, and just a few of the kinds of barriers that prevent people with disabilities from fully enjoying our parks. The 2014 Parks Replacement Bond would remove many, meaning our parks and playgrounds will be accessible to everyone, including those with disabilities.



EXAMPLE ACCESSIBILITY BARRIERS IN OUR PARKS

| | |
|------|-------------------------------|
| 2710 | Barriers in playgrounds |
| 493 | Barriers in trails |
| 691 | Barriers in gardens |
| 1305 | Barriers in community centers |

PUBLIC SUPPORT

A recent survey reveals that 76 percent of Portlanders support a bond that pays for the replacement of playgrounds and community center structures to make them accessible to people with disabilities. Source: DM Research Inc. 2014 telephone survey of 800 Portlanders.

76% SUPPORT

Portland Parks & Recreation
Healthy Parks, Healthy Portland
COMMISSIONER AMANDA FRITZ | DIRECTOR HUG ABRATE | Portland Parks.org

A young child with brown hair, wearing an orange long-sleeved shirt, is shown in profile, looking through a chain-link fence. The child's hands are touching the fence. In the background, a playground with yellow and blue equipment is visible. A blue banner with white text is overlaid on the top left of the image.

FOCUS AREA

RESTROOMS / OTHER

Fix or replace
restrooms and other
urgent repairs.

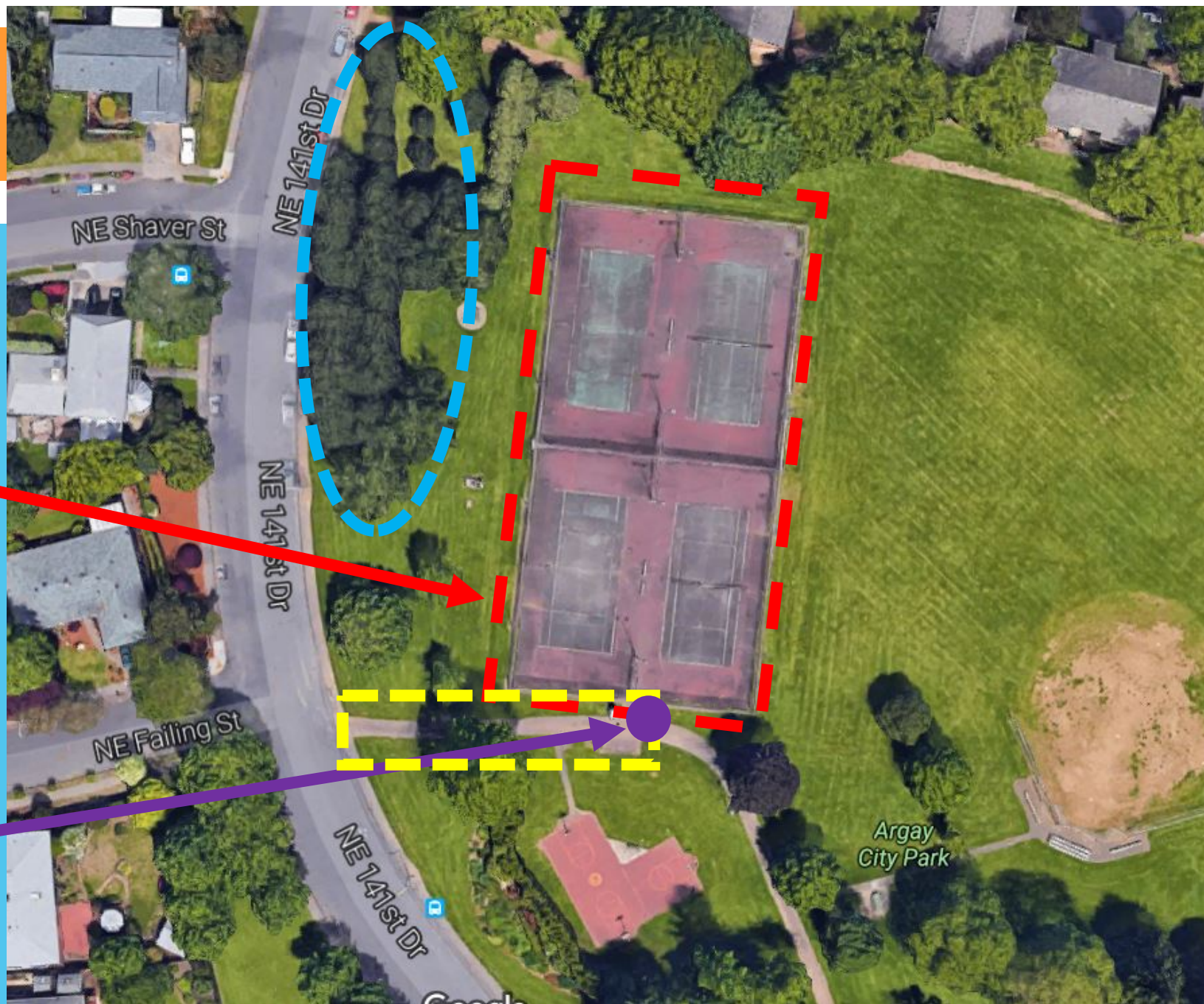
Park Details



Argay Park

- Tennis Courts
- Accessibility
- Safety

Park Details



Looking Forward

Construction

- Lents Park Playground
- Mt Tabor Rest Room
- Pioneer Courthouse Square
- Washington Park Rose Garden

Upcoming Construction

- Forest Park Trail Bridges
- Argay Park Tennis Courts
- North Park Blocks Playground
- Rieke Soccer Field
- Bloomington Rest Room
- Glenwood Rest Room
- St. Johns CC Roof and HVAC (re-bid)



Why are We Here?

- 1. Accept a bid from Duke Construction for the Argay Park Tennis Court Improvements project for \$581,192***

THANK YOU!

CONTACT INFO:

Lauren McGuire

Parks Development Program Manager

City of Portland

503.823.5591

Lauren.McGuire@PortlandOregon.gov