

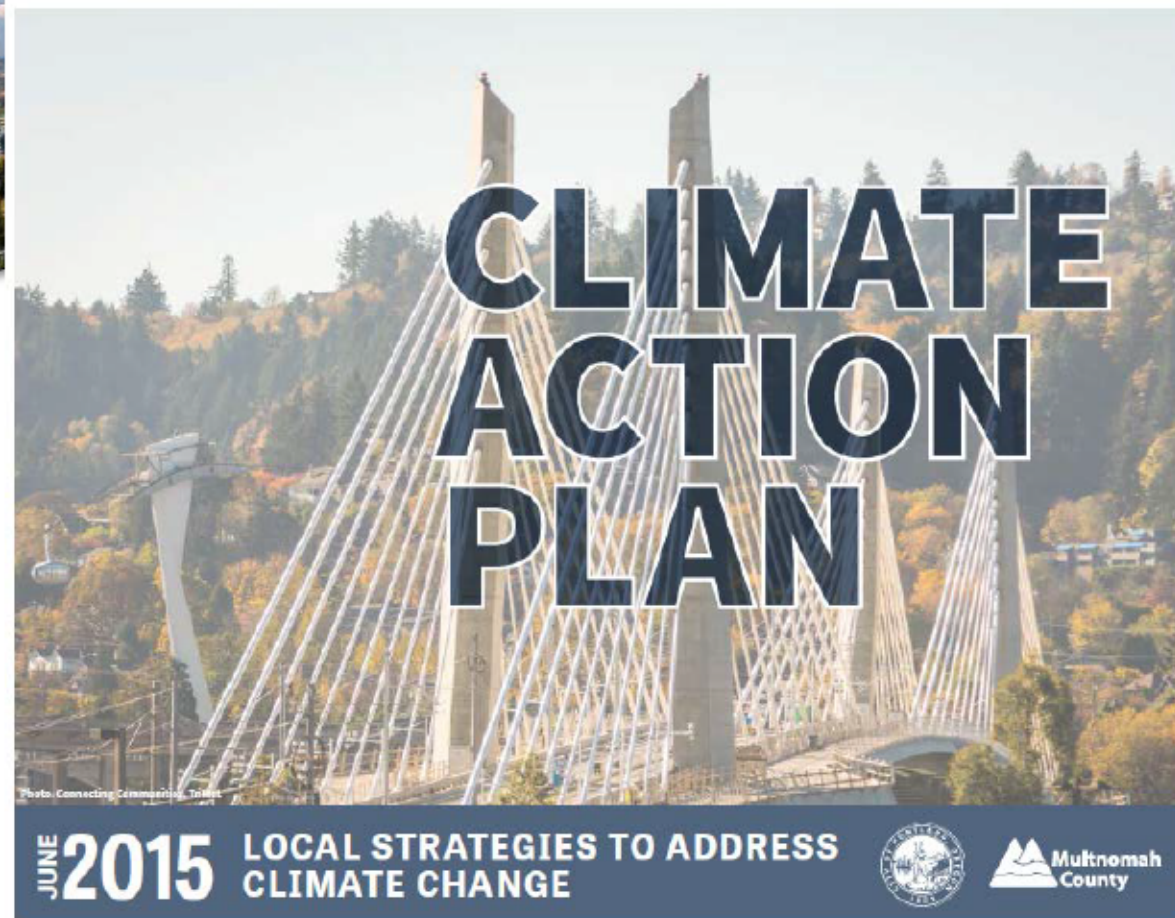


Local Climate Action:

Portland's plan for an equitable,
prosperous, healthy way forward

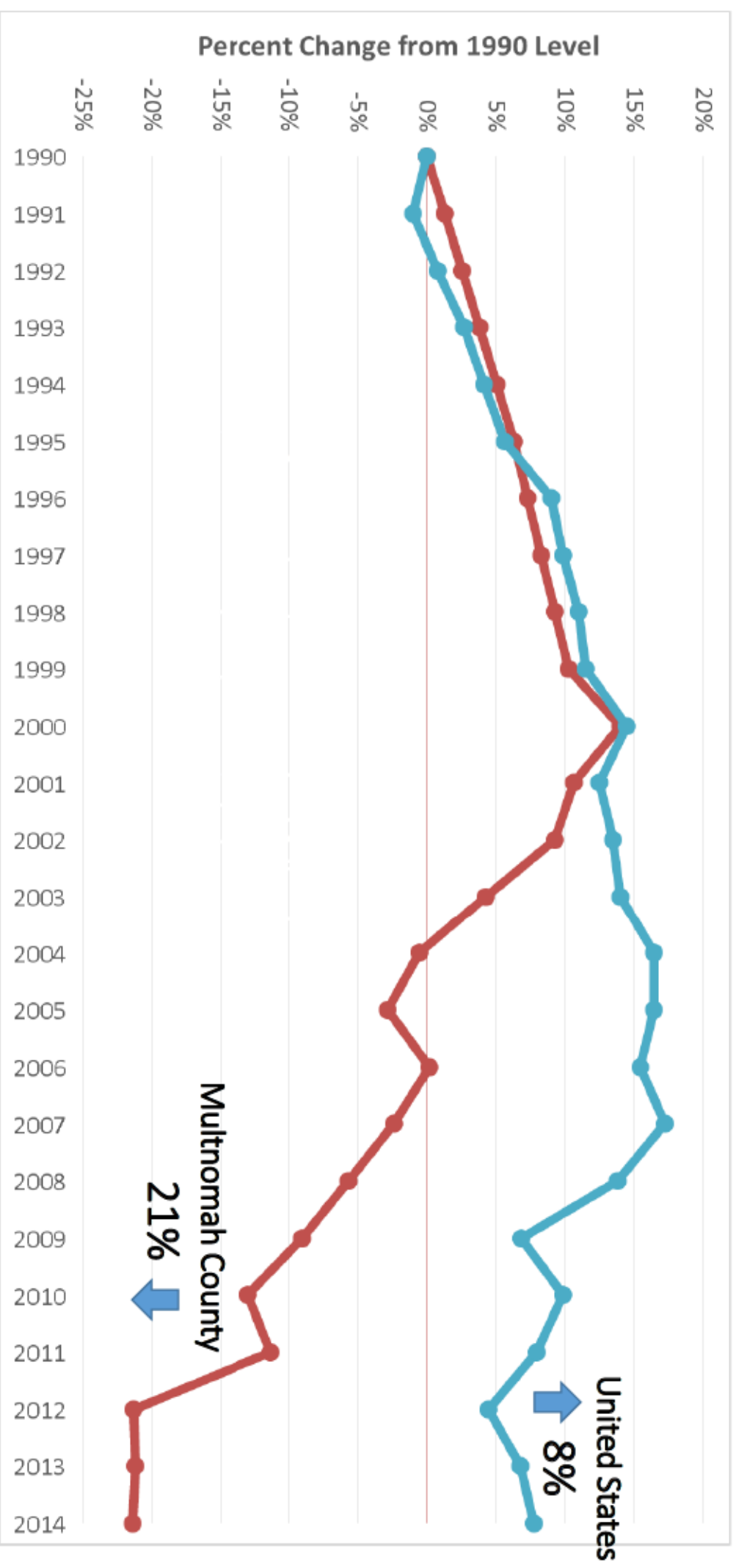


LEGACY OF LEADERSHIP



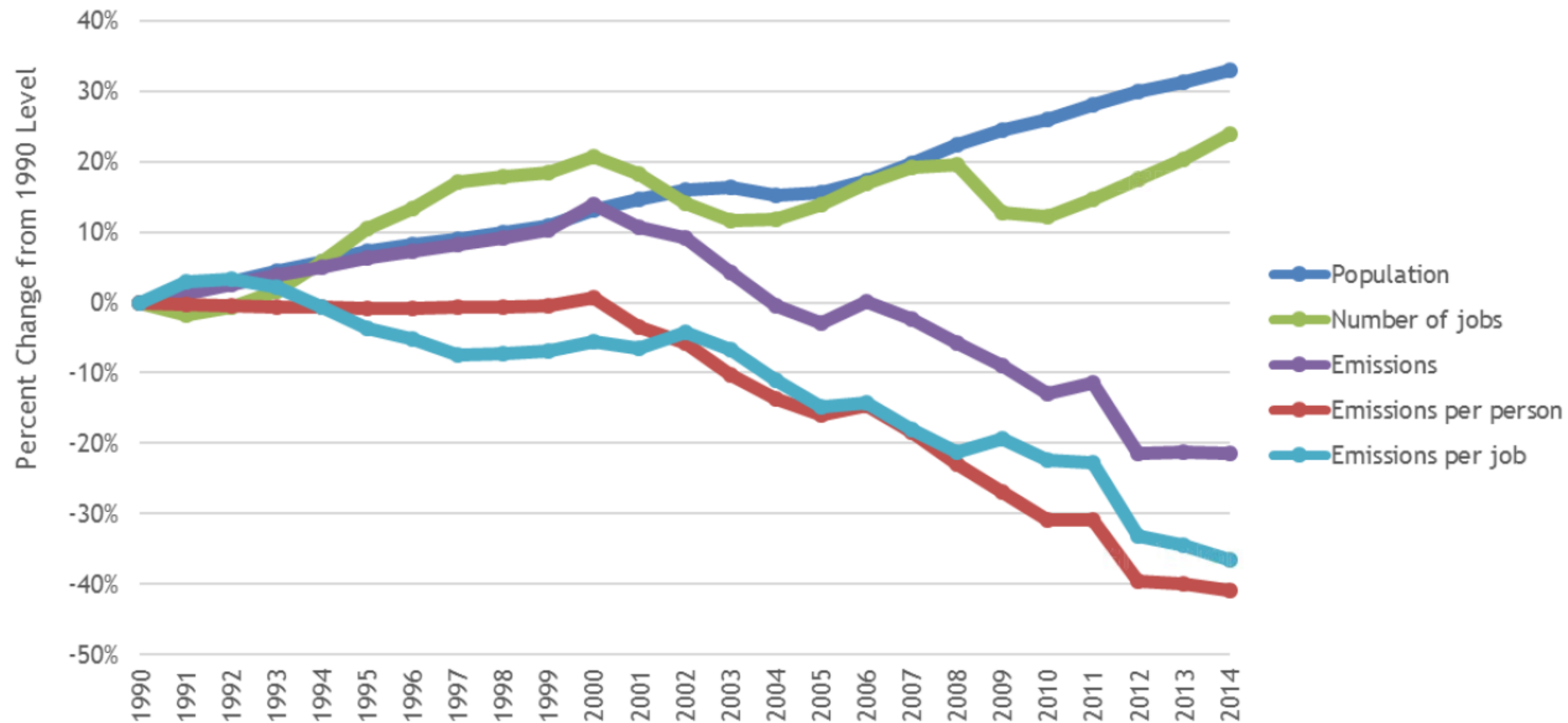
We're On Our Way

Carbon Emissions Trend



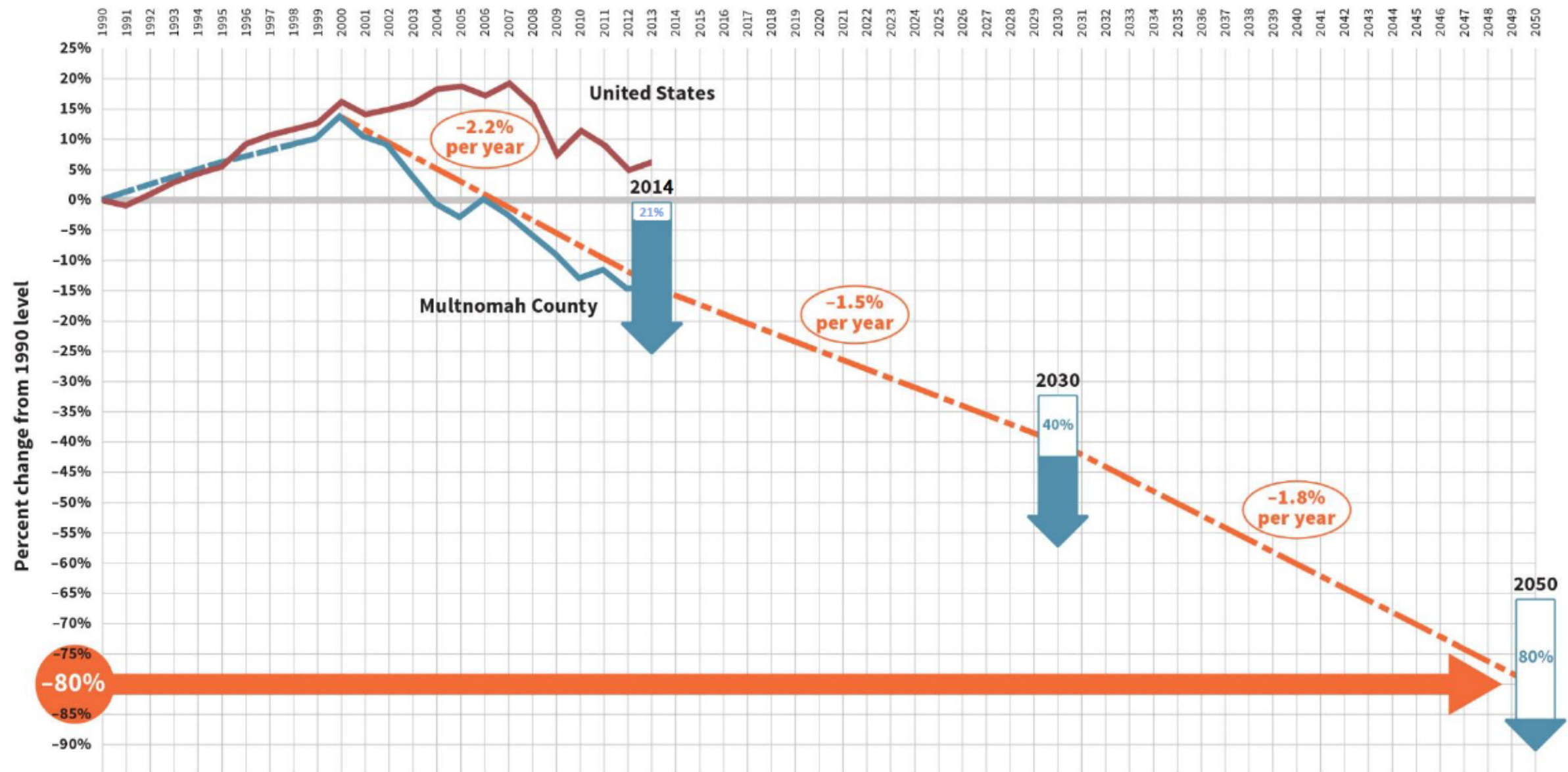


Population and Jobs Up, Carbon Emissions Down



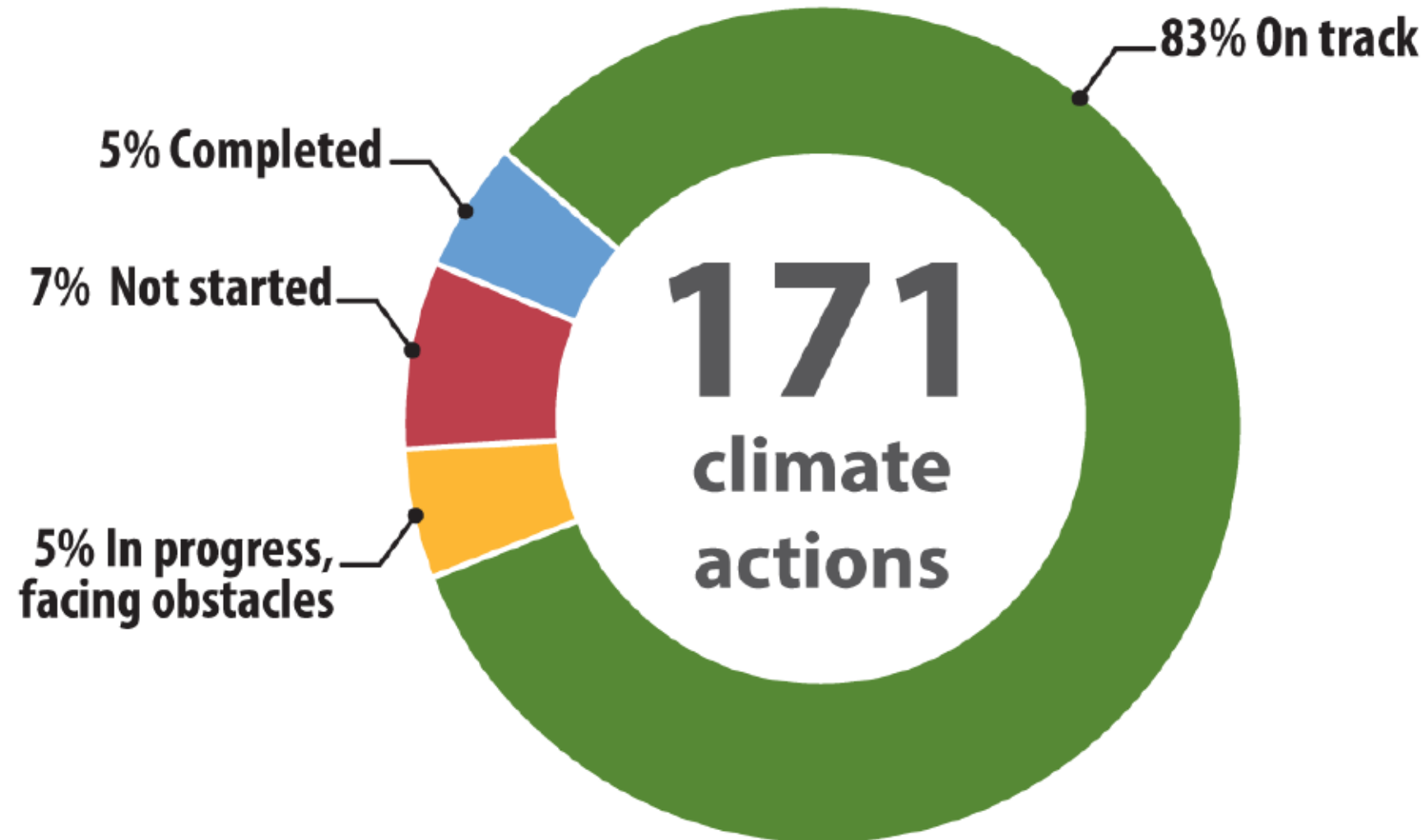


BUT WE STILL HAVE WORK TO DO





2015 Climate Action Progress





Benchmarking Commercial Energy Performance






Scoring Home Energy





Financing Energy Efficiency



An aerial photograph of a large industrial facility, likely a refinery or chemical plant, situated along a body of water. In the foreground, several large, white, cylindrical storage tanks are visible. To the right, a long, low industrial building with a light-colored roof stretches across the frame. In the background, a large ship is docked at a pier, with a blue crane visible on the ship's deck. The water is dark, and the sky is clear. A dark, semi-transparent banner is overlaid on the left side of the image, containing the text "Restricting Fossil Fuel Infrastructure".

Restricting Fossil Fuel Infrastructure



Sharing Bikes






Pursuing Inclusionary Housing





Planning Our Future



A group of approximately 15 construction workers, including men and women of various ethnicities, are posing for a group photo on a wooden ramp. They are all wearing white hard hats and high-visibility orange and yellow safety vests. Some are wearing gloves, and one person in the back row is wearing a respirator mask. They are standing behind a wooden railing. The background shows a building with corrugated metal siding and a blue vertical support post. The number '6344' is visible on the right side of the image.

Requiring Deconstruction and Salvage

6344



Car-Free Crossing of the Willamette





Helping Residents Save Money



Recycling and Composting



Growing Food and Community

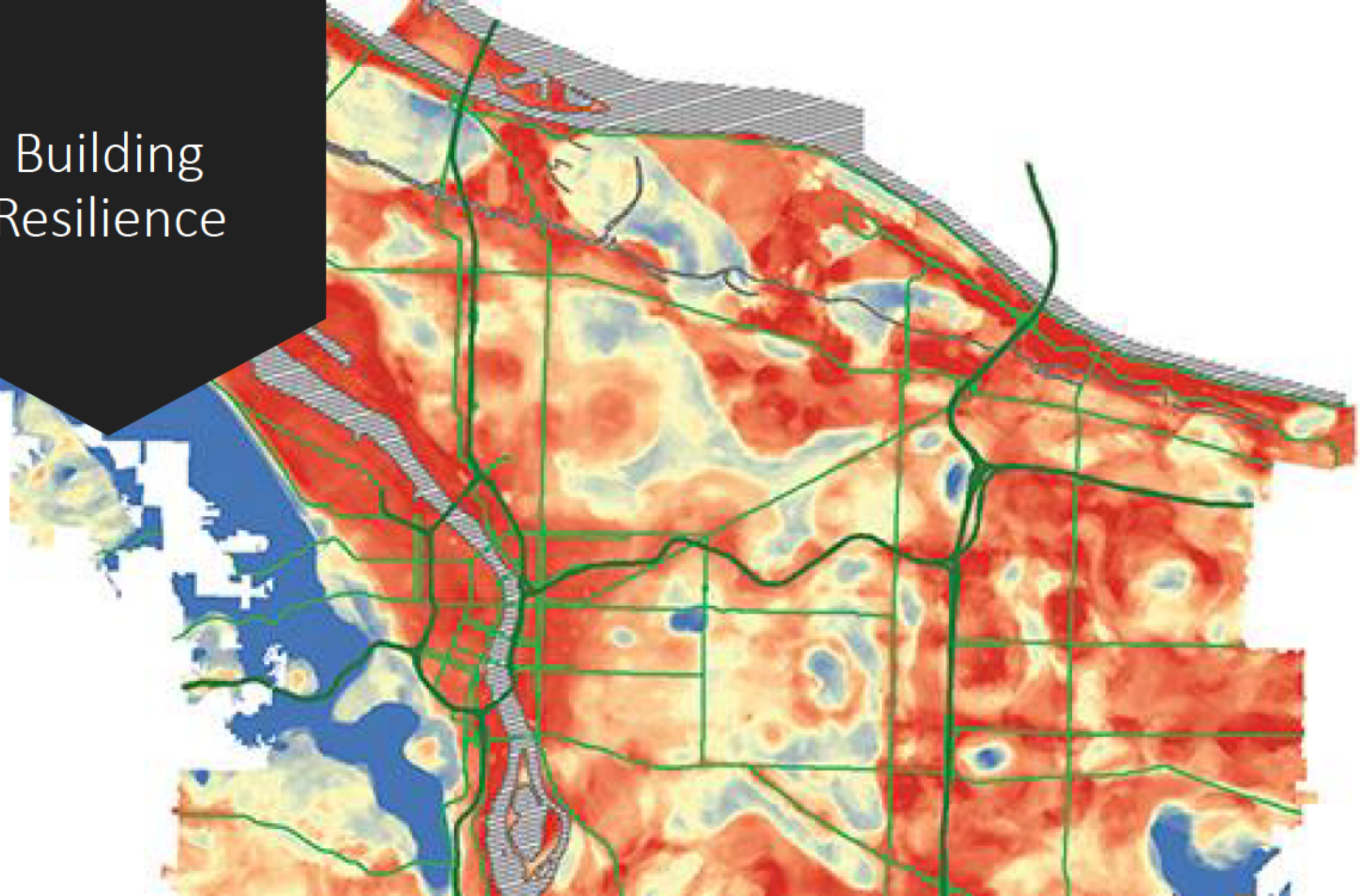




Bringing Nature into the City

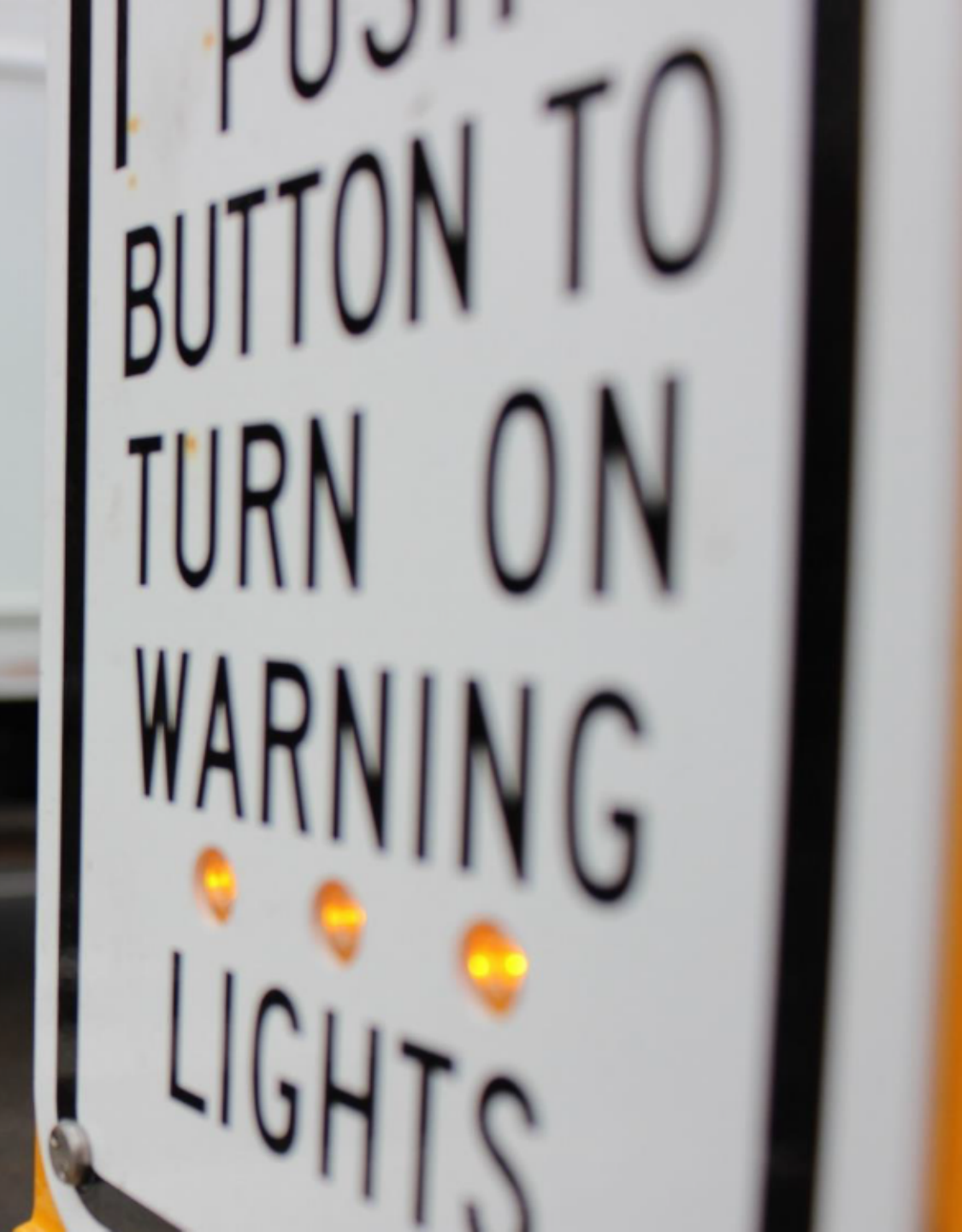


Building Resilience





Funding Transportation Improvements





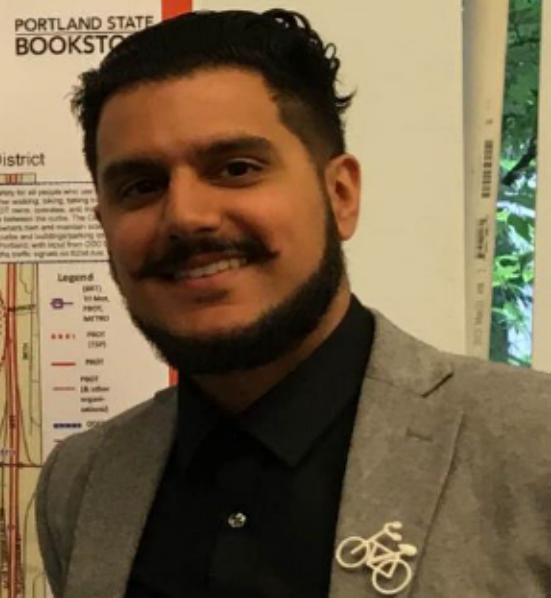
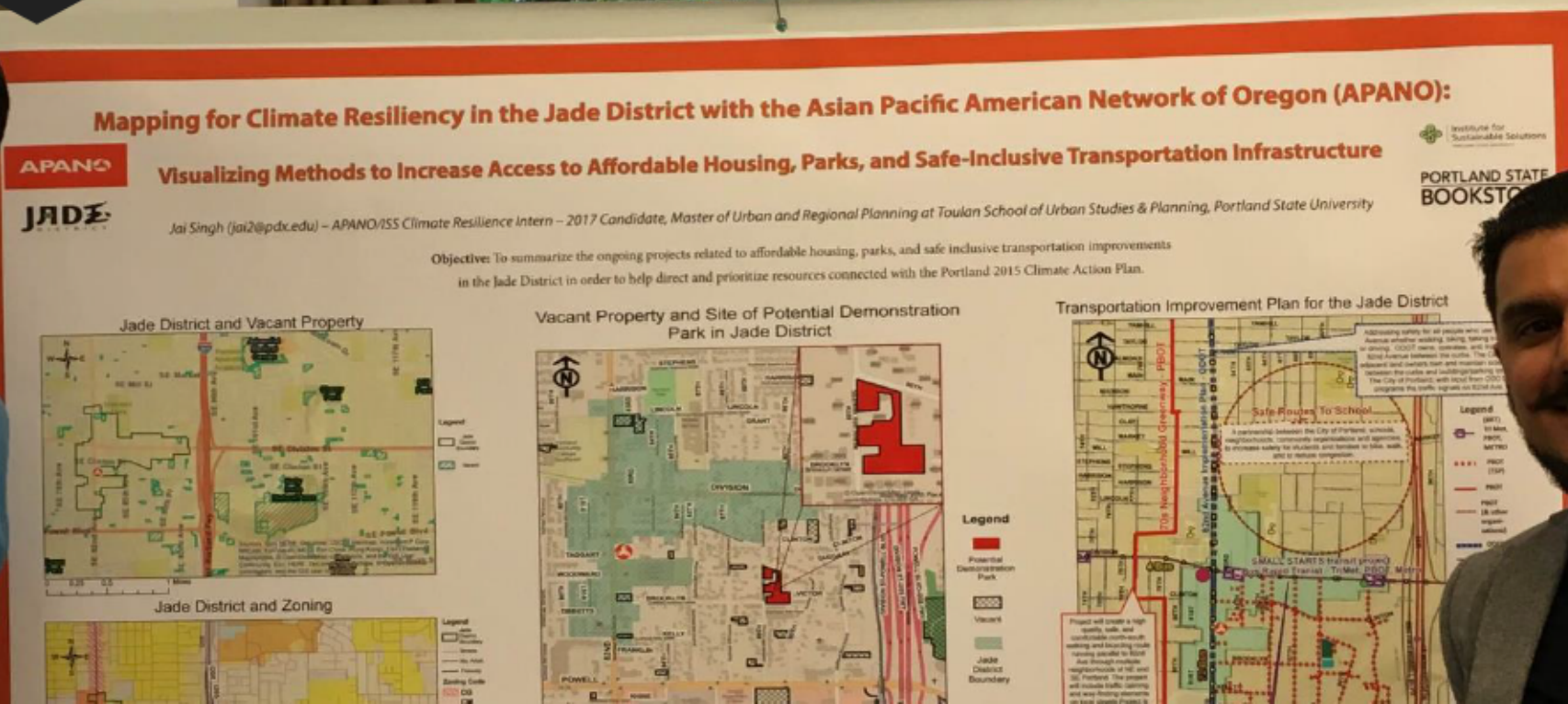
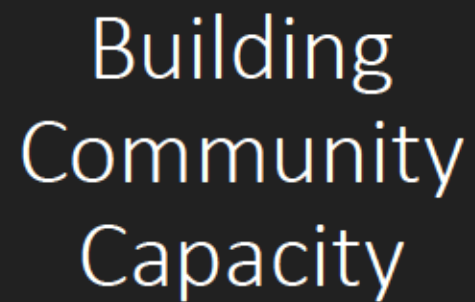
Walking the Talk





Electrifying Transportation







Challenges Remain





Next Steps





www.portlandoregon.gov/bps/climate