

CENTRALCITY 2035

Decision Packet M: Willamette River Part 3

PSC Work Session 8 – April 11, 2017



Bureau of Planning and Sustainability
Innovation. Collaboration. Practical Solutions.

City of Portland, Oregon
Charis Webb, Mayor • Jason Anderson, Director





Bureau of Planning and Sustainability
Innovation. Collaboration. Practical Solutions.



River Environmental Overlay Zone

Discussion item M31 –
Standard for temporary
floating structures (aka
swimming platforms) in the
Willamette River



H1: Swimming in the River

Central City-wide action

“Expand opportunities for safe swimming in the Willamette River in the Central City in places where conflicts with natural resource protection and enhancement can be avoided or minimized.”



Swimming in the River

Central City Potential Swimming Beach Sites Study (2016)

- Safe family-friendly swimming places
- Ranked sites based on site and safety criteria
- Hawthorne Bowl scored highest
- McCormick Pier was determined to not be suitable



Eastbank Crescent Riverfront Plan

Concept 1: Habitat Focus



Concept 2: Public Access Focus



2017 State of the City of Portland

- Take (river) renaissance to a whole new level.
- Begin our work this summer, with Portland's first pilot beach program at Poet's Beach on the westside
- The eastside of the Willamette River has great potential to radically enhance our relationship with the Willamette River. A broad stakeholder plan is done, in place and we're ready to move on it.
- These projects have the potential to revitalize our relationship with what is essentially our city's largest unofficial park, the Willamette River.



River Environmental Overlay Zone

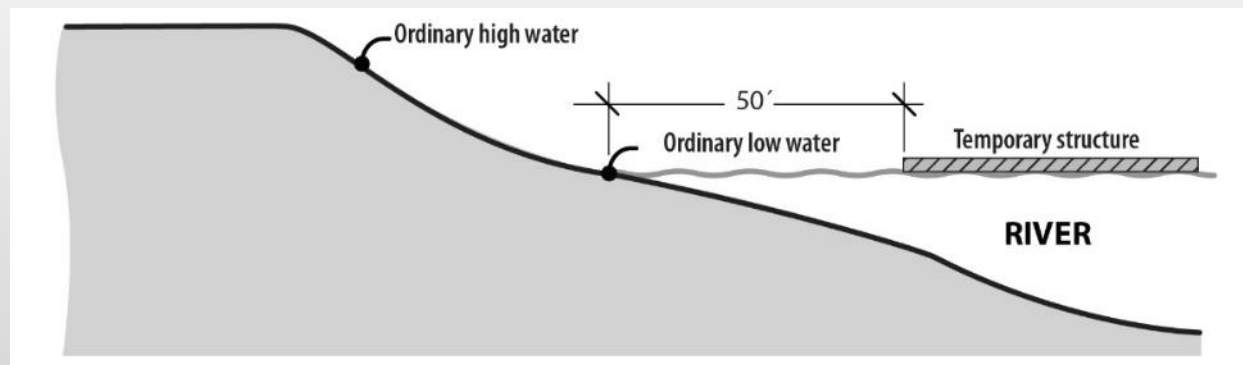
Discussion item M31 –
Standard for temporary
floating structures (aka
swimming platform) in the
Willamette River



River Environmental Overlay Zone

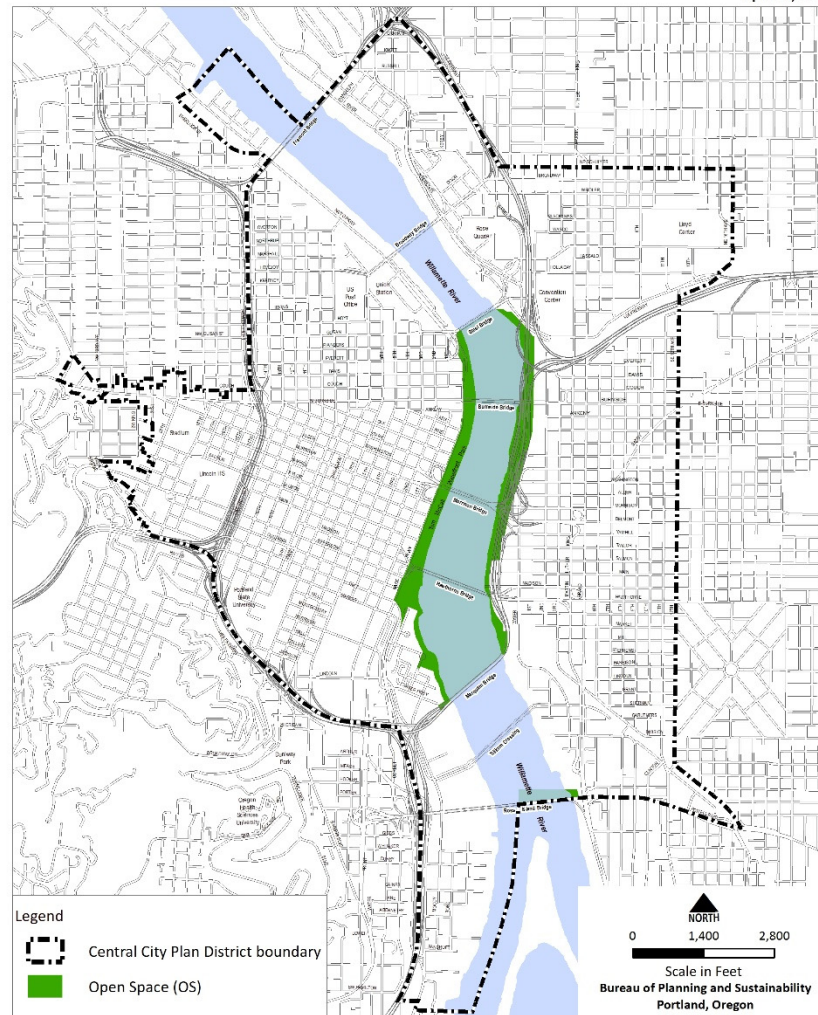
Conditions for a temporary floating structure:

1. Only in the river between July 1 and Oct 31;
2. In the Open Space zone only;
3. 4 total in the Central Reach;
4. No greater than 12 feet by 100 feet;
5. Free-floating or is attached to an existing dock, pier or piling;
6. 50 feet away from the ordinary low water mark (Figure 475-1);
7. No roof or walls; and
8. Hours of operation 6am-10pm



Central City - Riverfront Open Space Zoning

April 11, 2017



State and Federal Permits



**US Army Corps
of Engineers®**



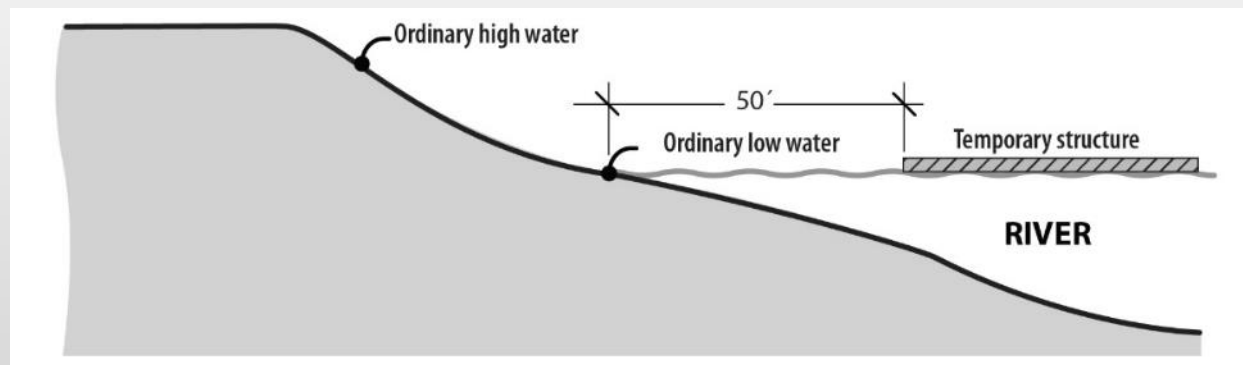
Bureau of Planning and Sustainability
Innovation. Collaboration. Practical Solutions.



River Environmental Overlay Zone

Conditions for a temporary floating structure:

1. Only in the river only between July 1 and Oct 31;
2. In the Open Space zone only;
3. 4 total in the Central Reach;
4. No greater than 12 feet by 100 feet;
5. Free-floating (anchored) or is attached to an existing dock, pier or piling;
6. 50 feet away from the ordinary low water mark (Figure 475-1);
7. No roof or walls; and
8. Hours of operation 6am-10pm



Floating Structures



Floating Structures

Floating Home



Barge-home



Boats and Boating



Houseboat





Bureau of Planning and Sustainability
Innovation. Collaboration. Practical Solutions.



River Environmental Overlay Zone

