



PORTLAND PARKS & RECREATION

Healthy Parks, Healthy Portland



Elk Rock Island Transfer

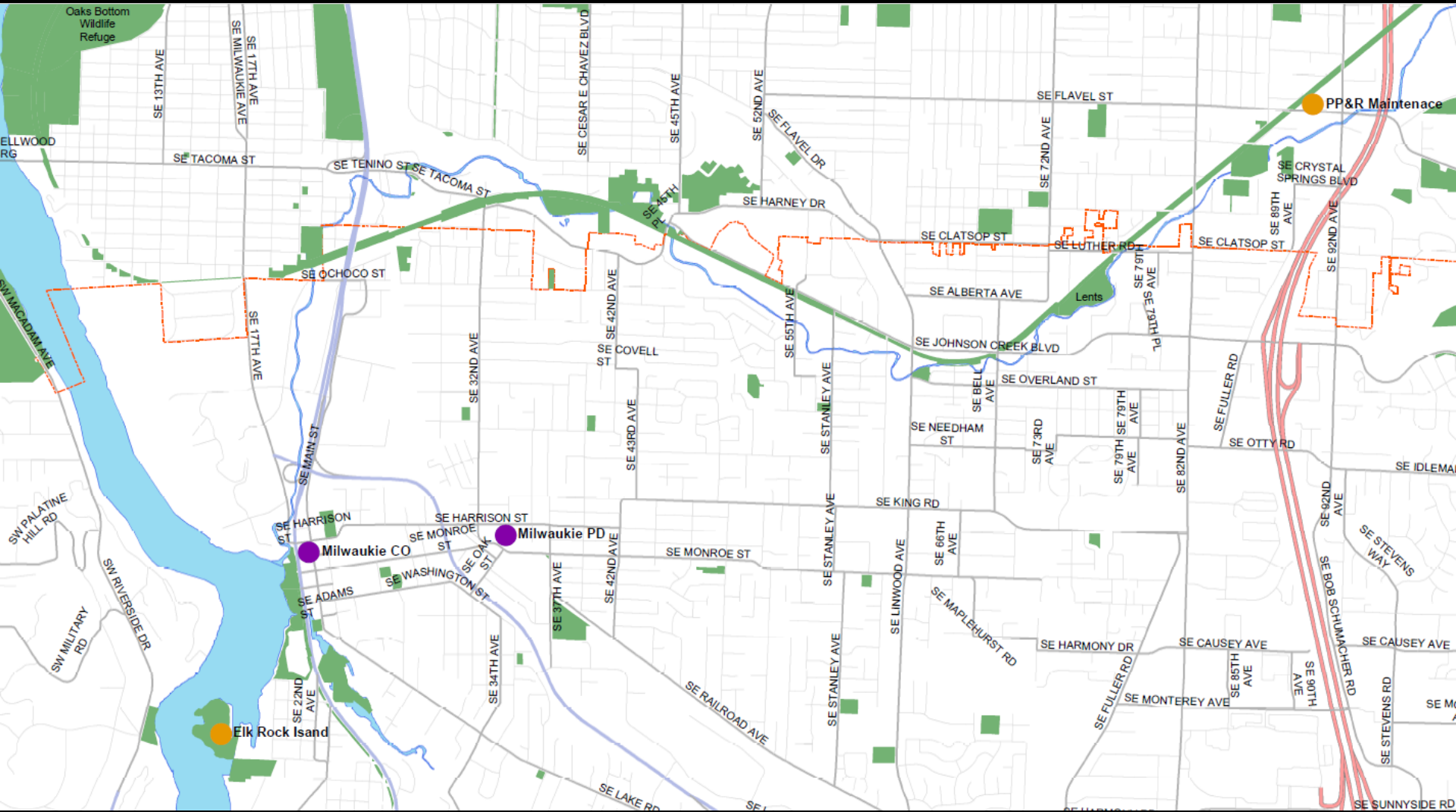
March 15, 2017

James Allison, PP&R Land Stewardship Division Manager

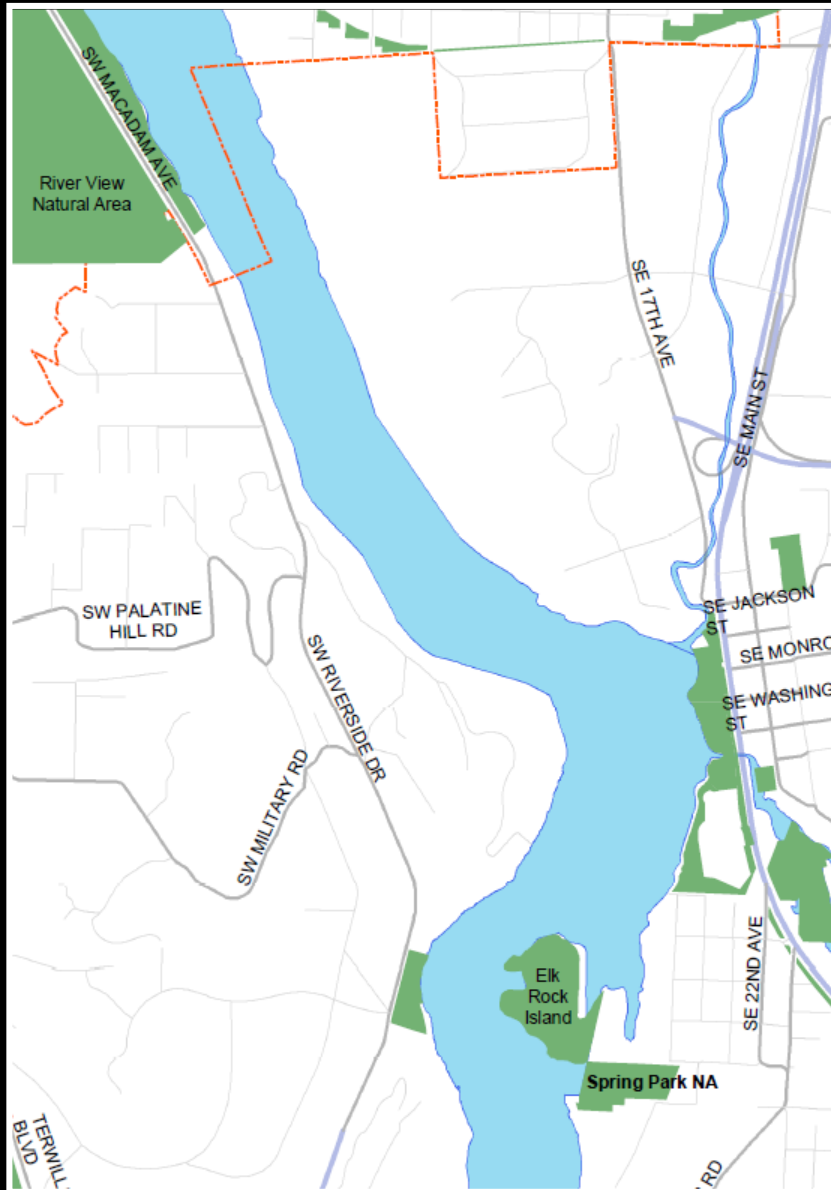
Jane Bacchieri, BES Watershed Services Group Manager

Eric Engstrom, Principal Planner, Bureau of Planning and Sustainability

Transfer of Ownership



History and Location



Peter Kerr donated the island to the City of Portland in 1940 with the requirement that it be preserved in its natural state.



188277



188277





PORTLAND PARKS & RECREATION

Healthy Parks, Healthy Portland

ELK ROCK ISLAND is the historic home of more than 50 species of native plants - most of them rarely found anywhere else in the Portland area.

One Island Many Treasures

Thin soils topping ancient volcanic rock on Elk Rock Island support six distinct habitats. Grasslands, wetlands, two different forest types, seasonal pools, and cliff-face communities create tremendous variety in a small space.

Isolation contributed to the island's biodiversity, but human misuse and spread of non-native plants threaten the survival of many species. Look for signs of the City of Portland's efforts to restore and preserve these fragile habitats now and into the future.



Hooded ladies' tresses
Spiranthes romanoffiana

ROCKY HEADLANDS

Exposed bedrock along the edges of the island creates two distinct habitats. Small pools that seasonally cover low-lying areas are home to aquatic plants and small invertebrates. Adjacent ledges provide a warm, dry environment for lichens, ferns, and other shallow-rooted plants.



Licorice fern
Polypodium glycyrrhiza



Western skink
Plestiodon skiltonianus



North American beaver
Castor canadensis

EMERGENT WETLAND

Willows, beggarticks, and rushes populate river-silted soils on both sides of the island. The wetlands may be the remains of a prehistoric channel.



Beggarticks
Rudis fransosa



Pacific willow
Salix lasiandra



Cluster lily
Triteleia hyacinthina



Swallowtail butterfly
Papilio oregonus

GRASSLAND

A remnant of a habitat once common throughout the Willamette Valley, native grasses struggle to survive here. Competition from non-native plants and human impact constantly limit their spread.

UPLAND FOREST

An overstory of large Douglas-firs and bigleaf maples shade many familiar northwest plants such as trillium, thimbleberry, and salal. Tall trees provide nesting sites for the great blue heron.



Bigleaf maple
Acer macrophyllum



Swainson's thrush
Catharus ustulatus



Douglas-fir
Pseudotsuga menziesii

OAK WOODLAND

Oak trees dominate dry areas where madrone and poison-oak are common in the understorey. Once widespread in western Oregon, oak communities have shrunk to a tiny fraction of their historic ranges. Portland Parks & Recreation is managing this habitat to reduce the encroachment of native Douglas-firs that overtop and eventually kill the oaks.



Madrone
Arbutus menziesii



Downy woodpecker
Picoides pubescens



Oregon white oak
Quercus garryana

Be a part of the solution



Please stay on designated trails. Even footprints can damage sensitive habitats. Take nothing but photos and enjoy plants and wildlife from a distance.

DRAFT 8-19-13



Is this really an island?

Spring snowmelt and winter rains raise water levels so that the Willamette River channel fills and separates Elk Rock Island from the east bank of the river. At other times, exposed rock provides a natural connection.



Partnership and Stewardship

City of Portland

- Interpretation and Stewardship
- Ecological Planning
- Revegetation
- Monitoring

City of Milwaukie

- Security
- Spring Park NA Management



Stewardship



- Natural Resource Management Plan
- Connected to Spring Park NA
- Oak Habitat Restoration
- Rare Plant Monitoring
- Bird Surveys
- Trail Maintenance and Repair
- Invasive Plant Removal

Habitat Value



Special Habitat Types

- Rocky Headland
- Emergent Wetland
- Grasslands
- Upland Forest
- Oak Woodland
- Vernal pools

White-breasted nuthatch
Sitta carolinensis



Oregon iris
Iris tenax



Wilson's warbler
Cardellina pusilla



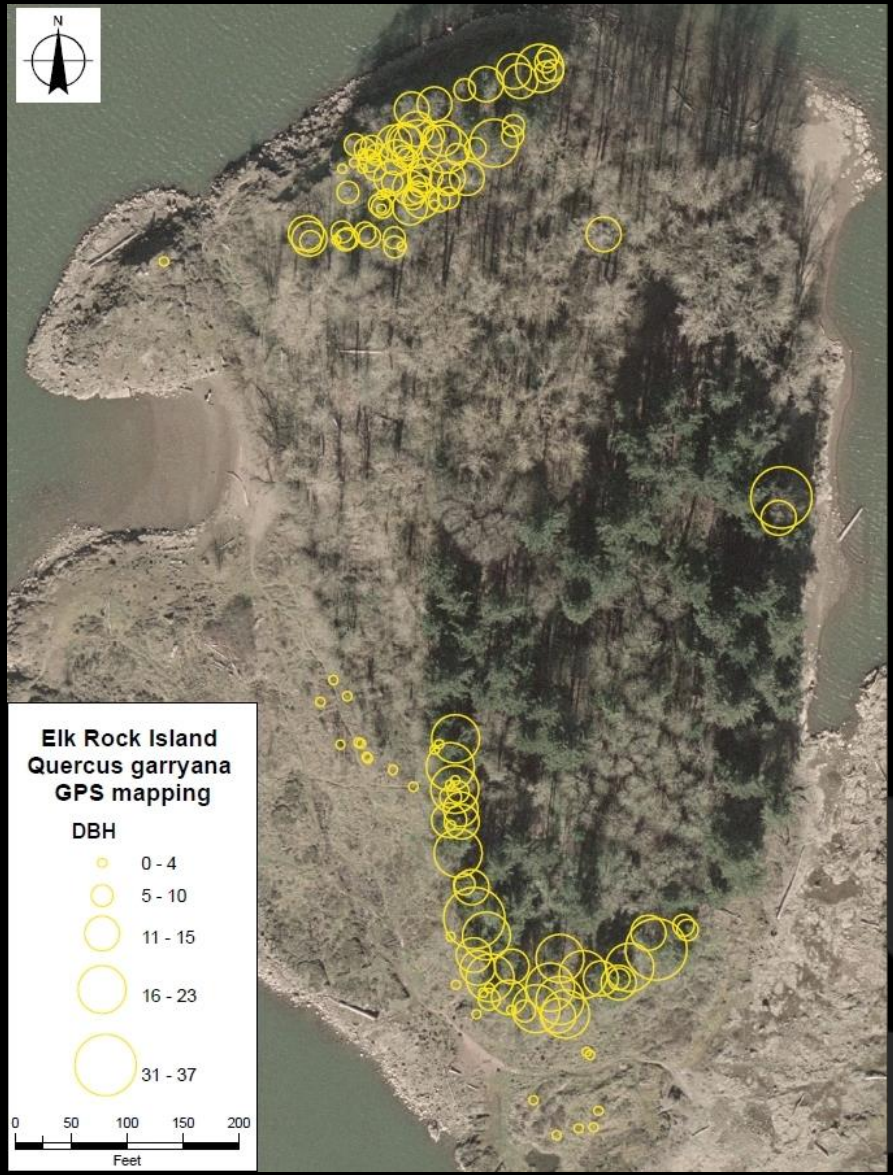
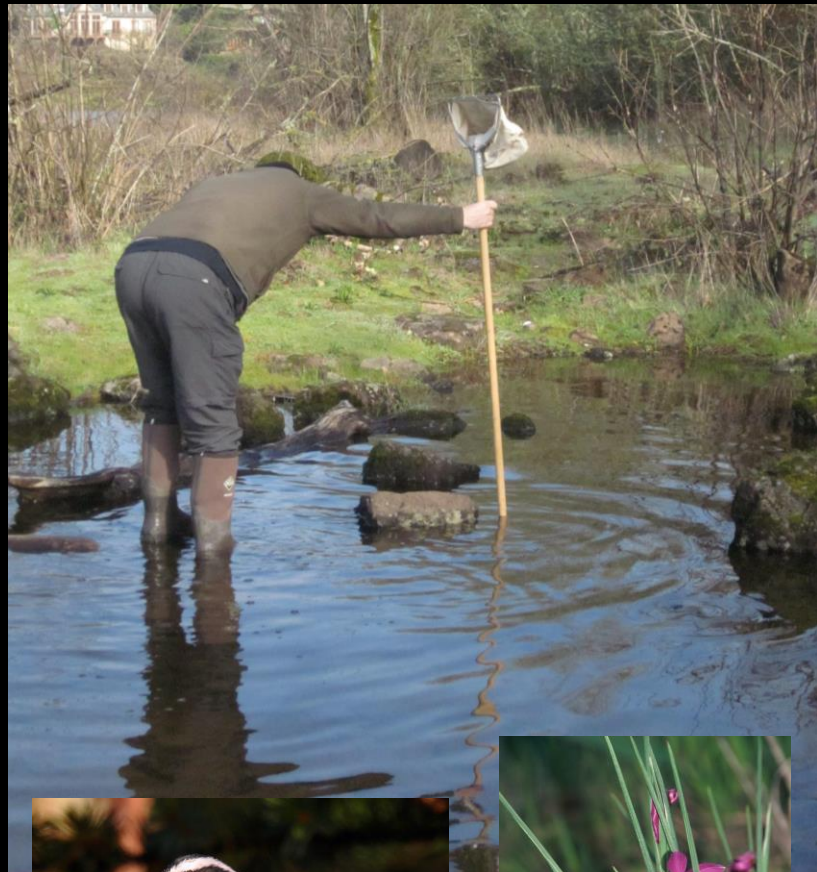
Tiger lily
Lilium columbianum



Restoration

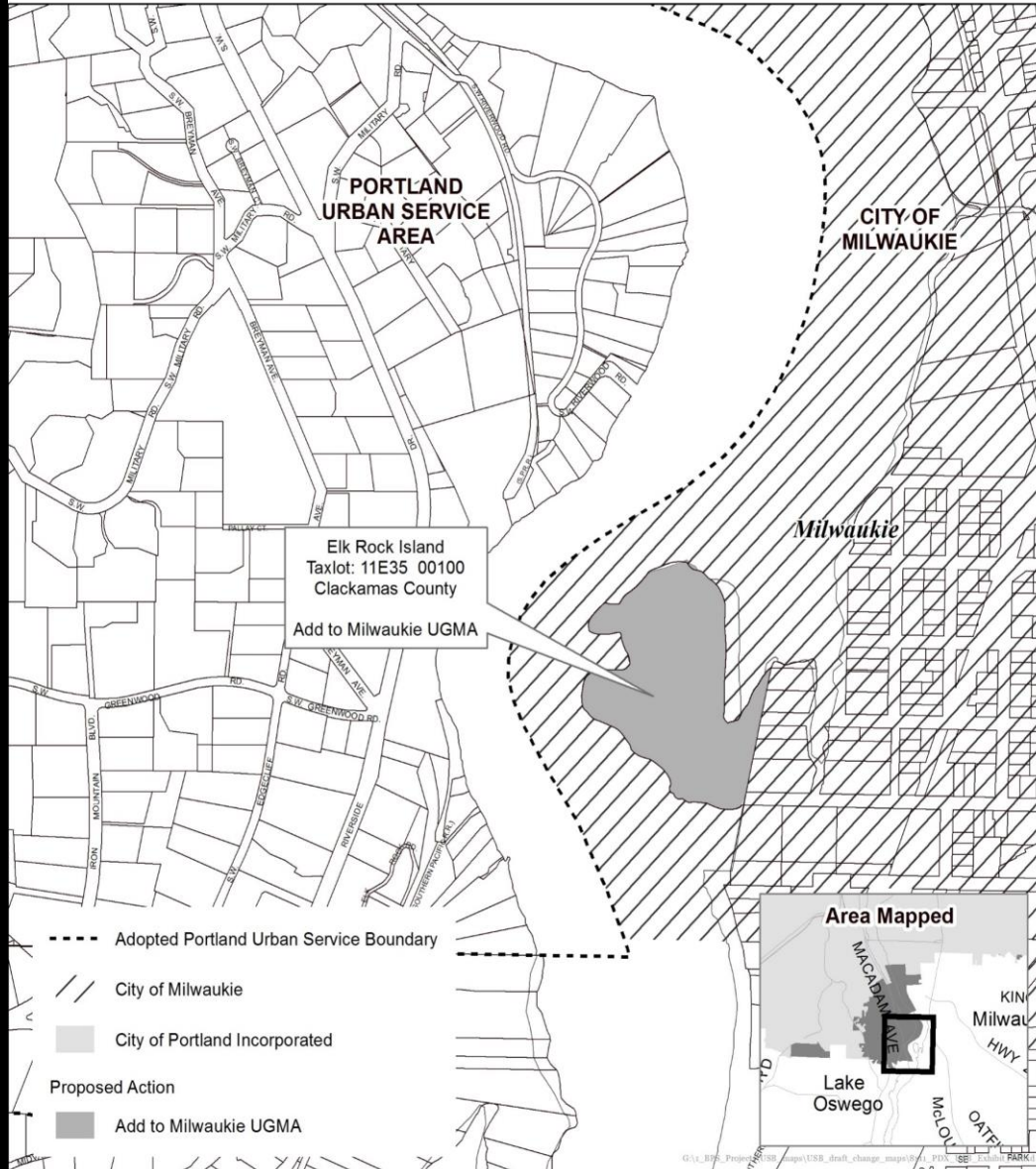


Monitoring



**Exhibit G:
Unassigned Areas added to Milwaukie Urban Growth
Management Area**

188277



August 3, 2016

City of Portland, Oregon
Bureau of Planning & Sustainability
Geographic Information System



0 400 800 Feet



Bureau of Planning and Sustainability
Portland, Oregon



City of Portland
Office of Planning and Sustainability
Portland, Oregon

Future Management

